

Child Welfare

Outcome Measures & Results
January 2014 (Reflects data as of
November 30, 2013)



Federal Regulations & Data

Definitions and Data Sources

SAFETY 1 – Children are first and foremost, protected from abuse and neglect.

Figure 1: Child Protective Services Cases1

Count of unique CPS Investigations or Family Preservation (Ongoing) stages open at any point during the month. Includes all cases active at some time during the month.

Sources: Internal Data System, SHINES

Figure 2: Recurrence of Substantiated Child Maltreatment..... 1

Of all the children who were victims of substantiated maltreatment in the first 6 months of the year, the percentage that had substantiated maltreatment within the following 6 months.

National Standard: less than or equal to 5.40%

Sources: Protective Services Data System, SHINES

Figure 3: Disposition of Child Abuse and Neglect Reports..... 2

Chart reflects the disposition of reports received in a particular month. Data includes count of Family Support, Substantiated Investigations, Unsubstantiated Investigations and Screenouts.

Source: SHINES

Figure 4: Disposition of Child Abuse and Neglect Reports..... 2

Chart reflects the disposition of reports received in a particular month. Data includes count of Family Preservation (Substantiated and Unsubstantiated Open), Foster Care (Substantiated and Unsubstantiated Open), Substantiated and Unsubstantiated Closed.

Source: SHINES

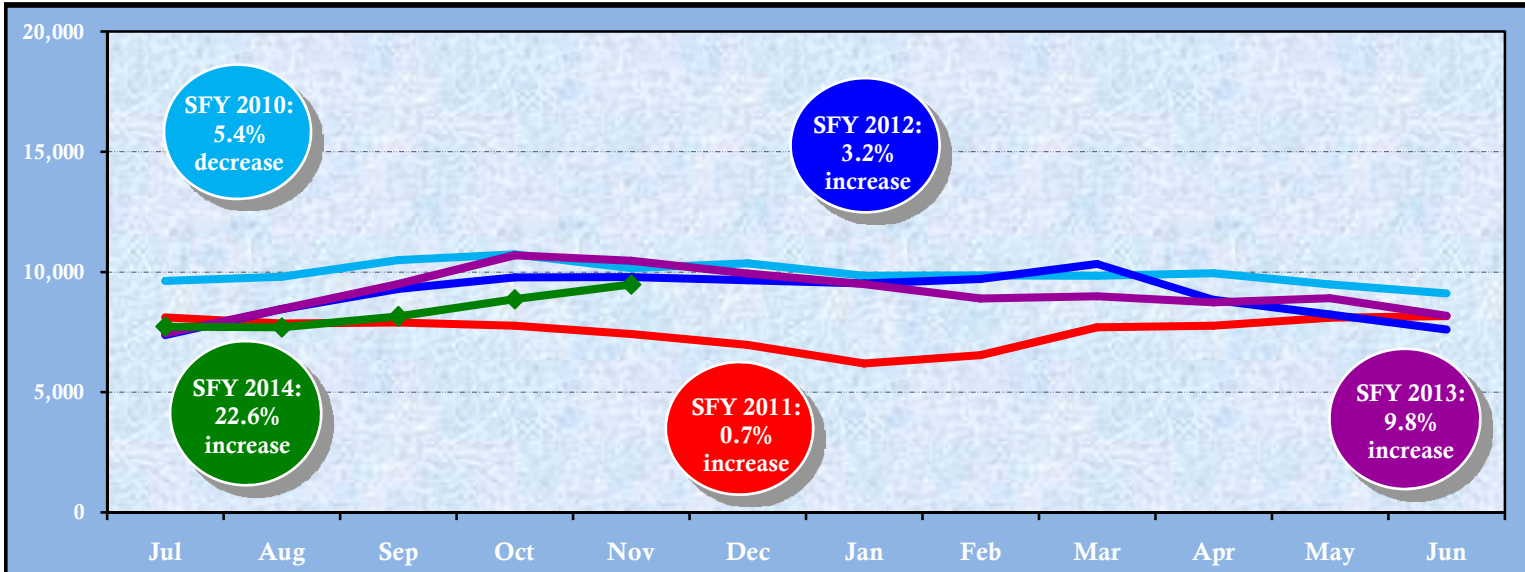
Definitions and Data Sources cont...

PERMANENCY 1 – Children have permanency and stability in their living situations.

- Figure 5: Child Placement Services Cases**3
Count of unique children in foster care or adoptions stages open at any point during the month and cases active at some time during the month. Population may include children not in DFCS custody.
Sources: Internal Data System, SHINES
- Figure 6: Children in the Legal Custody of DFCS** 3
Count of unique children who were in the legal custody of DFCS (17 years of age and under) at some point during the month, and those 18 years of age and older (Extended Youth Services). Excludes Aftercare, ICPC, Placement services to parents, and Boarding County.
Source: SHINES
- Figure 7: Children in the Legal Custody of DFCS Under the Age 18**.....4
Count of unique children who were in the legal custody of DFCS at some point during the month under the age 18. Excludes Aftercare, ICPC, Placement services to parents, and Boarding County.
Source: SHINES
- Figure 8: Extended Youth Services**.....4
Number of children age 18 and over who have signed themselves back into care.
Source: SHINES
- Figure 9: Comparison of Foster Care Entries & Exits**.....5
Number of children who have entered foster care and number of children who have exited foster care during the month. Total children at end of month show the number of children on the last day of the month.
Source: SHINES
- Figure 10: Foster Care Re-entries**.....5
Of all the children who entered foster care, the percentage that were discharged from a previous placement within 12 months of the current foster care placement.
National Standard: less than or equal to 8.60%
Source: SHINES
- Figure 11: Length of Time to Achieve Reunification**.....6
Percentage of children who exited care during the month through reunification with their family that reunified in less than 12 months from the date of their removal.
National Standard: greater than or equal to 76.20%
Source: SHINES
- Figure 12: Children Placed with Relatives**.....6
Of all children in DFCS custody, the percentage that are placed with a relative or a relative foster home.
State Target: greater than or equal to 30.00%
Source: SHINES
- Figure 13: Adoptions Finalized**.....7
The number of children whose adoption was finalized.
Source: SHINES

SAFETY-RELATED OUTCOMES

Number of Child Protective Services Cases (includes Investigations and Family Preservation cases)



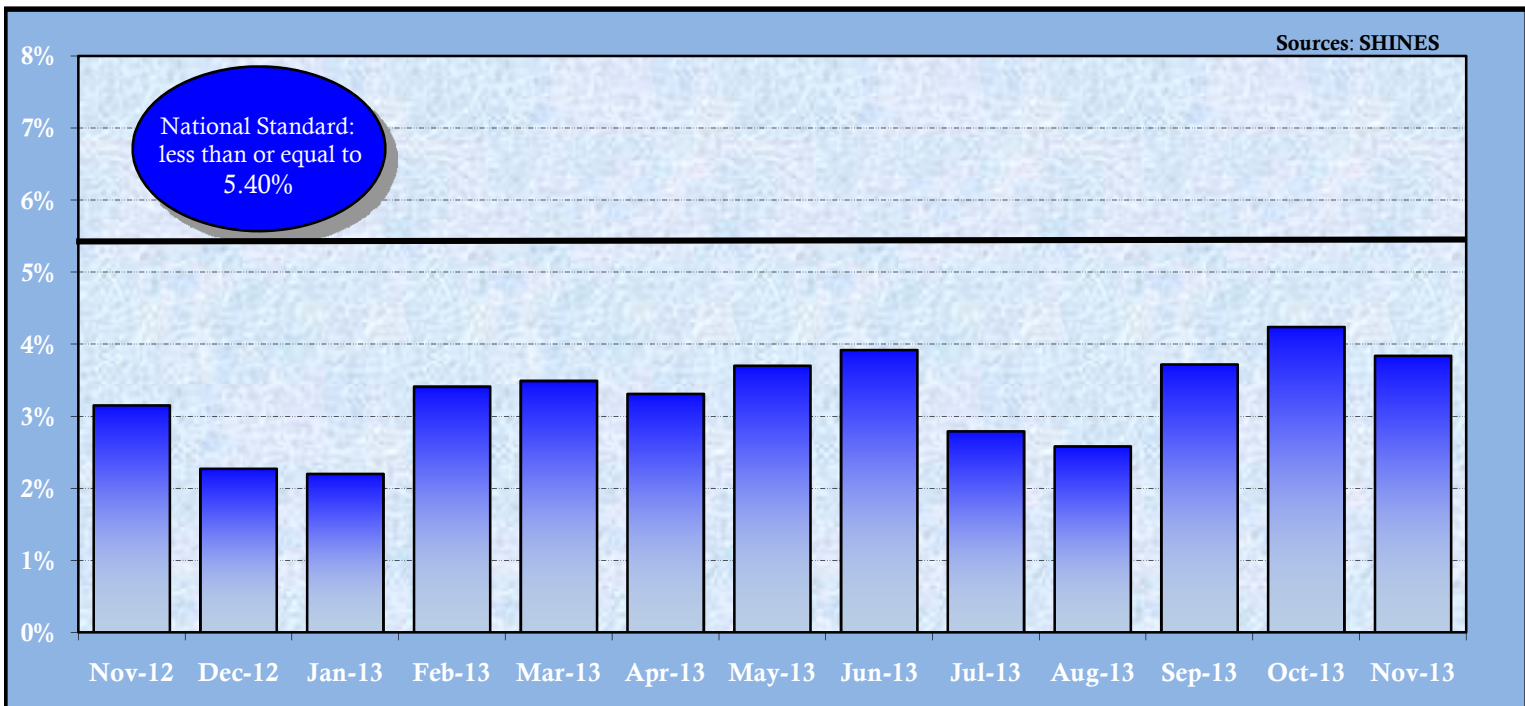
Sources: SHINES

Def: Count of unique CPS Investigations or Family Preservation (Ongoing) stages open at any point during the month. Percentages show the beginning to the ending of each SFY.

SFY	Jul	Aug	Sep	Oct	Nov	Dec	Jan	Feb	Mar	Apr	May	Jun
SFY 14	7,729	7,693	8,153	8,865	9,479							
SFY 13	7,441	8,449	9,489	10,696	10,462	9,934	9,492	8,895	8,991	8,733	8,902	8,169
SFY 12	7,373	8,451	9,291	9,776	9,786	9,650	9,521	9,707	10,338	8,836	8,228	7,606
SFY 11	8,103	7,855	7,895	7,765	7,410	6,969	6,189	6,542	7,696	7,768	8,098	8,163
SFY 10	9,624	9,796	10,489	10,734	10,165	10,357	9,833	9,856	9,834	9,950	9,479	9,105

Recurrence of Substantiated Child Maltreatment (Nov 2012 – Nov 2013)

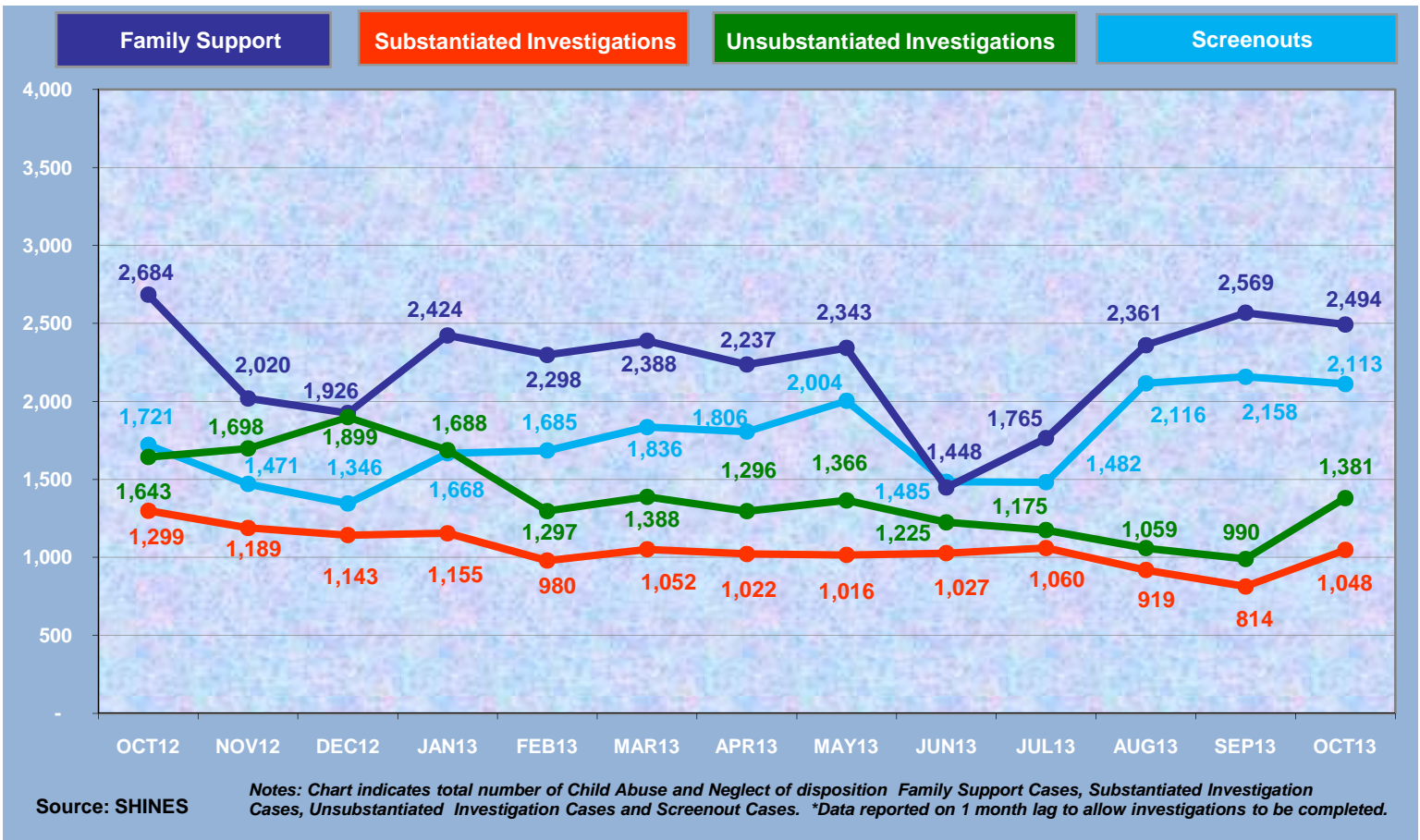
Def: Of all children who were victims of substantiated maltreatment in the first 6 months of the year, the percentage that had a substan. report of maltreatment within the following 6 months. This is calculated with a two-month lag.



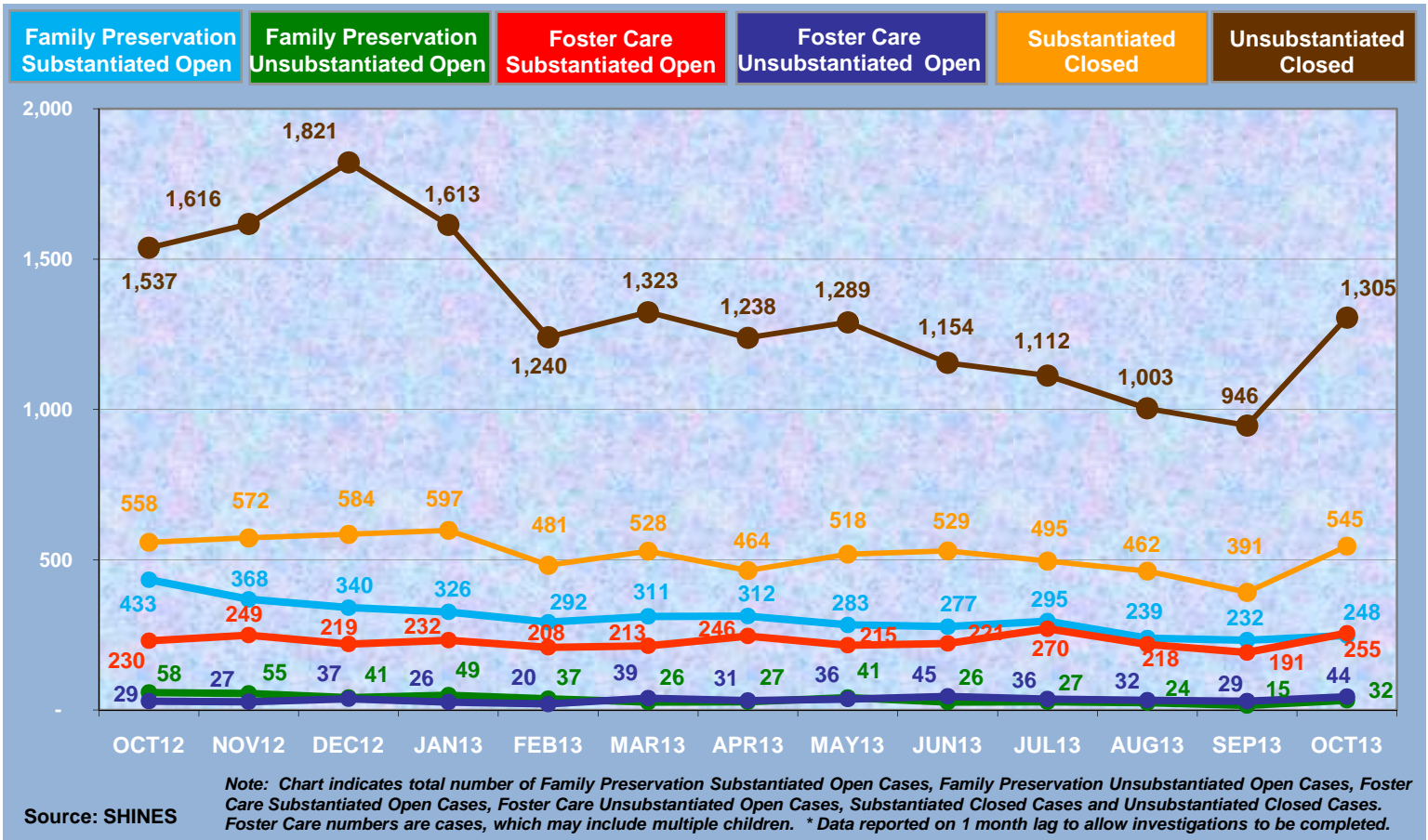
Sources: SHINES

Nov-12	Dec-12	Jan-13	Feb-13	Mar-13	Apr-13	May-13	Jun-13	Jul-13	Aug-13	Sep-13	Oct-13	Nov-13
3.15%	2.27%	2.20%	3.41%	3.49%	3.31%	3.70%	3.92%	2.79%	2.58%	3.72%	4.24%	3.84%

Disposition of Child Abuse and Neglect Reports (November 2013)

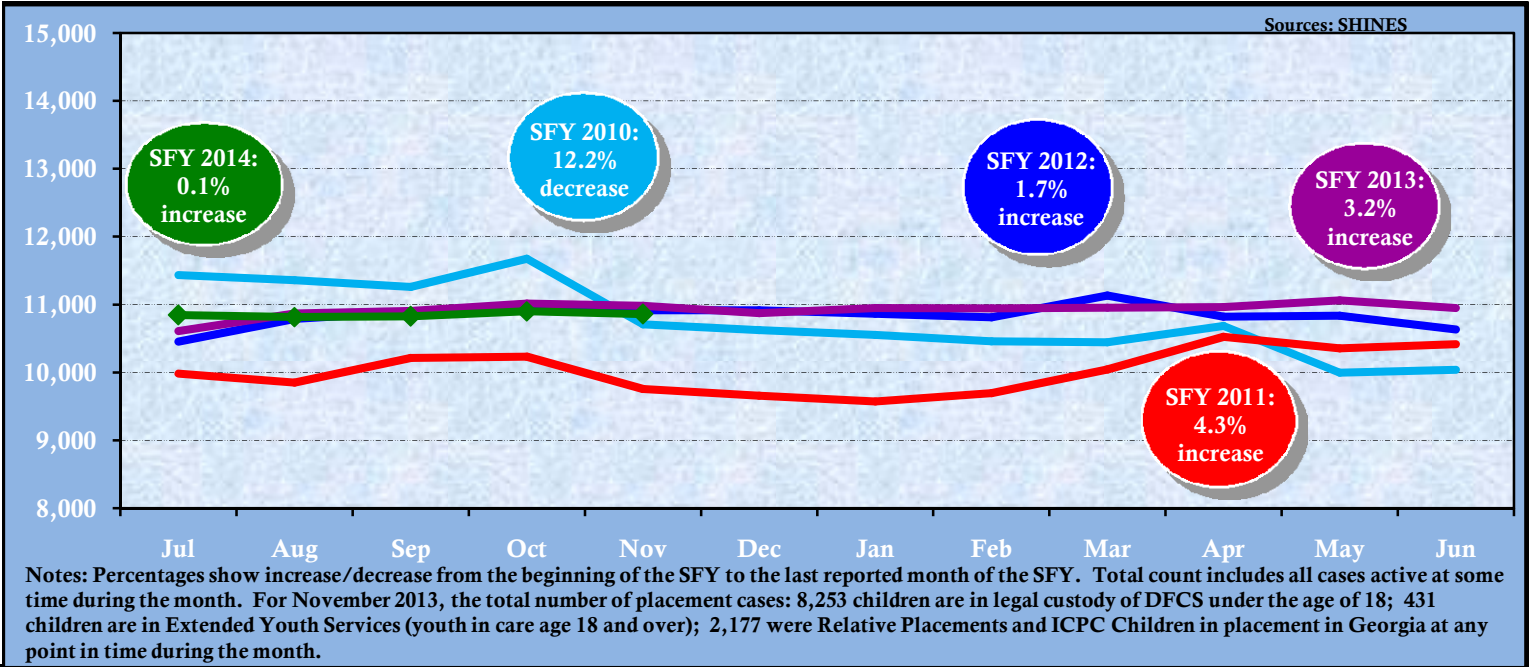


Disposition of Child Abuse and Neglect Reports (November 2013)



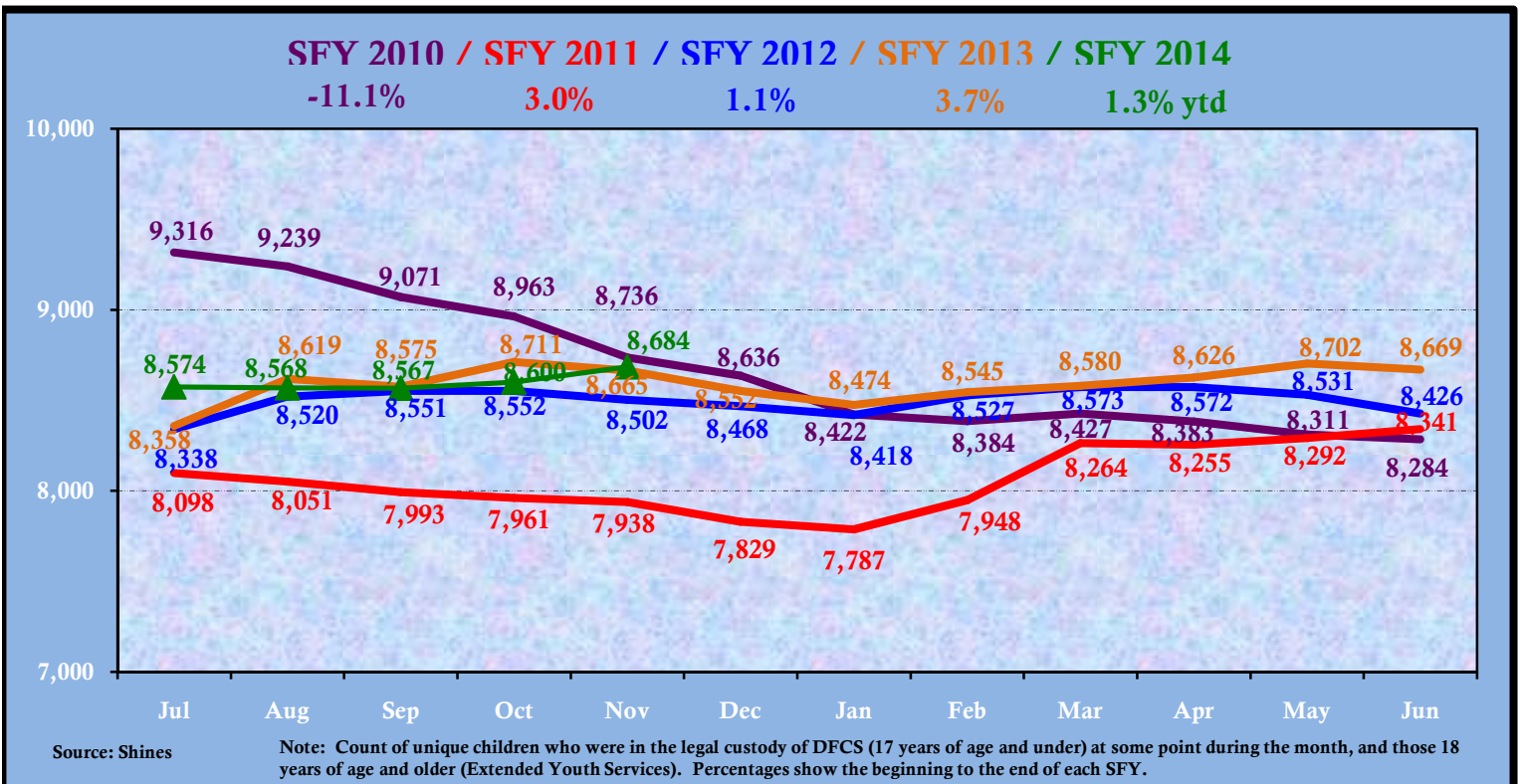
PERMANENCY- RELATED OUTCOMES

Number of Child Placement Services Cases (November 2013)



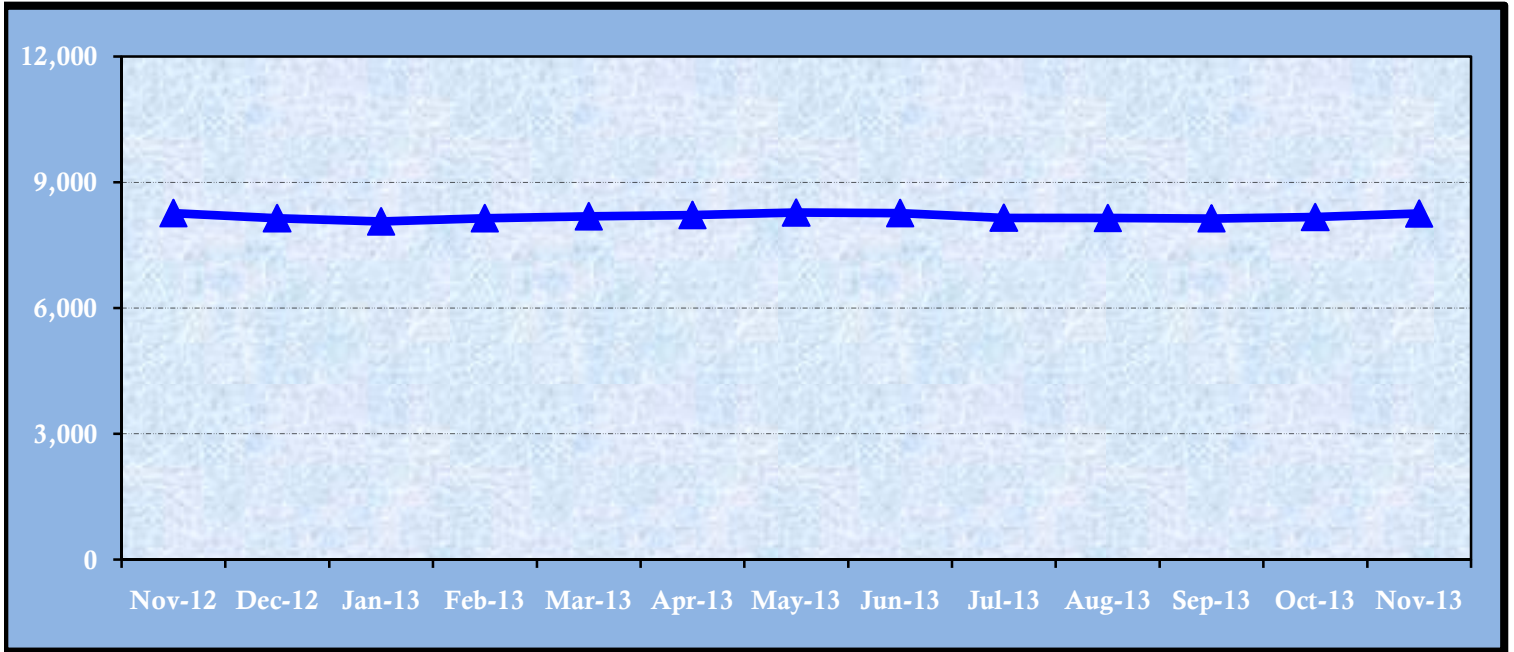
SFY	Jul	Aug	Sep	Oct	Nov	Dec	Jan	Feb	Mar	Apr	May	Jun
SFY 14	10,847	10,817	10,828	10,903	10,861							
SFY 13	10,610	10,871	10,907	11,016	10,984	10,875	10,951	10,944	10,955	10,966	11,063	10,948
SFY 12	10,457	10,788	10,893	10,908	10,917	10,919	10,863	10,813	11,135	10,823	10,839	10,634
SFY 11	9,985	9,853	10,215	10,234	9,758	9,660	9,572	9,698	10,047	10,526	10,355	10,419
SFY 10	11,437	11,362	11,260	11,676	10,708	10,625	10,552	10,462	10,446	10,687	9,997	10,041

Number of Children in the Custody and Care of DFCS (November 2013)



Children in the Legal Custody of DFCS Under the Age of 18 (November 2012 - November 2013)

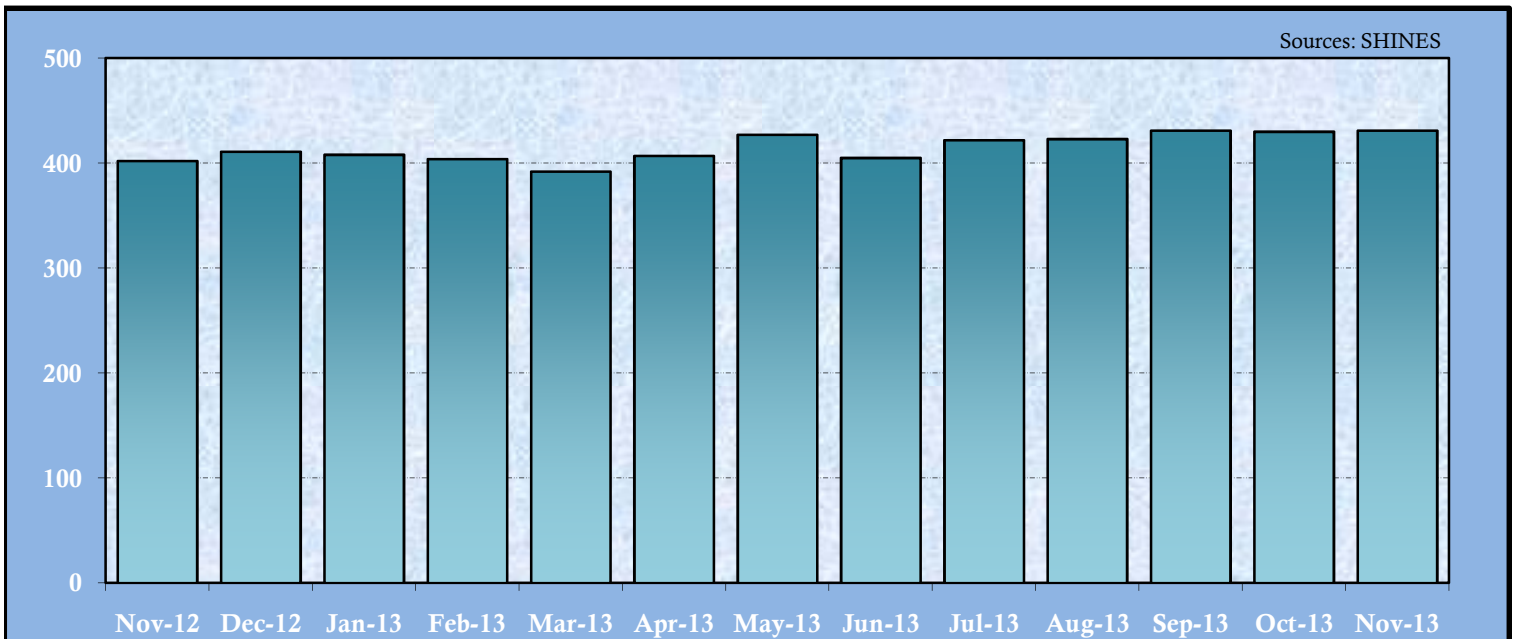
Def: Count of unique children who were in the legal custody of DFCS at some point during the month under the age 18. Excludes Aftercare, ICPC, Placement services to parents, and Boarding County.



Nov-12	Dec-12	Jan-13	Feb-13	Mar-13	Apr-13	May-13	Jun-13	Jul-13	Aug-13	Sep-13	Oct-13	Nov-13
8,263	8,141	8,066	8,141	8,188	8,219	8,275	8,264	8,152	8,145	8,136	8,170	8,253

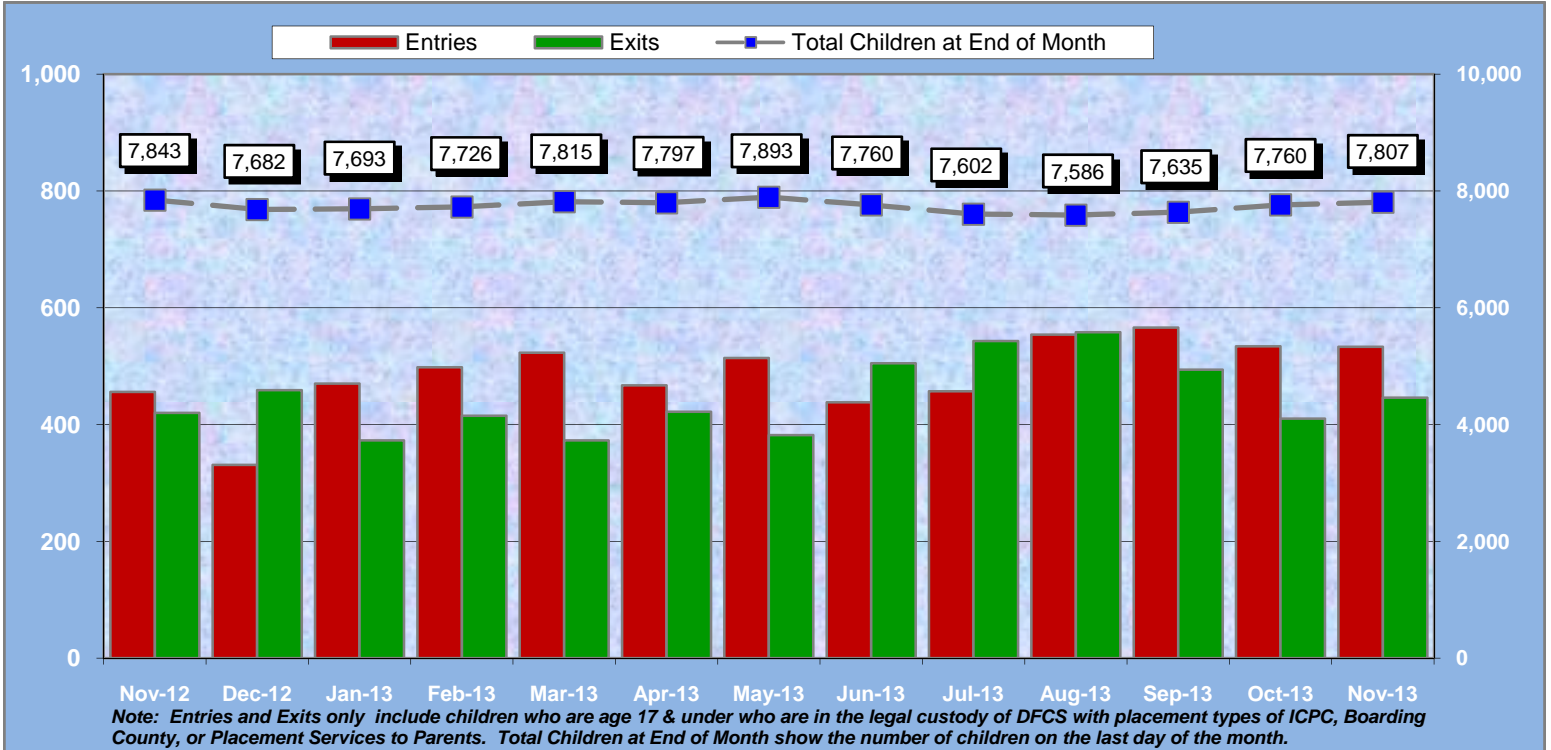
Extended Youth Services (November 2012 - November 2013)

Def: Number of children age 18 and over who have signed themselves back into care.



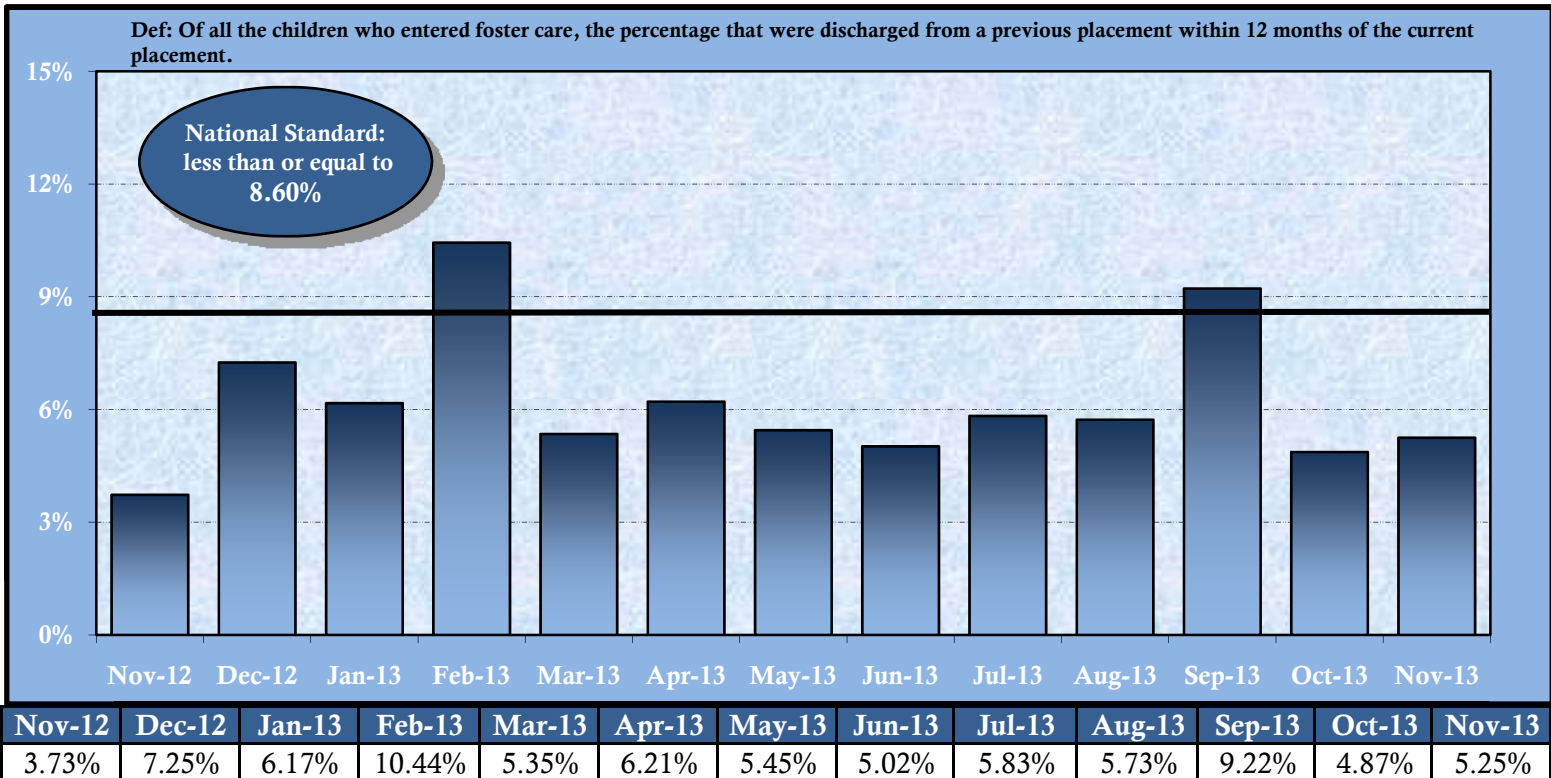
Nov-12	Dec-12	Jan-13	Feb-13	Mar-13	Apr-13	May-13	Jun-13	Jul-13	Aug-13	Sep-13	Oct-13	Nov-13
402	411	408	404	392	407	427	405	422	423	431	430	431

Comparison of Foster Care Entries and Exits (November 2012 - November 2013)



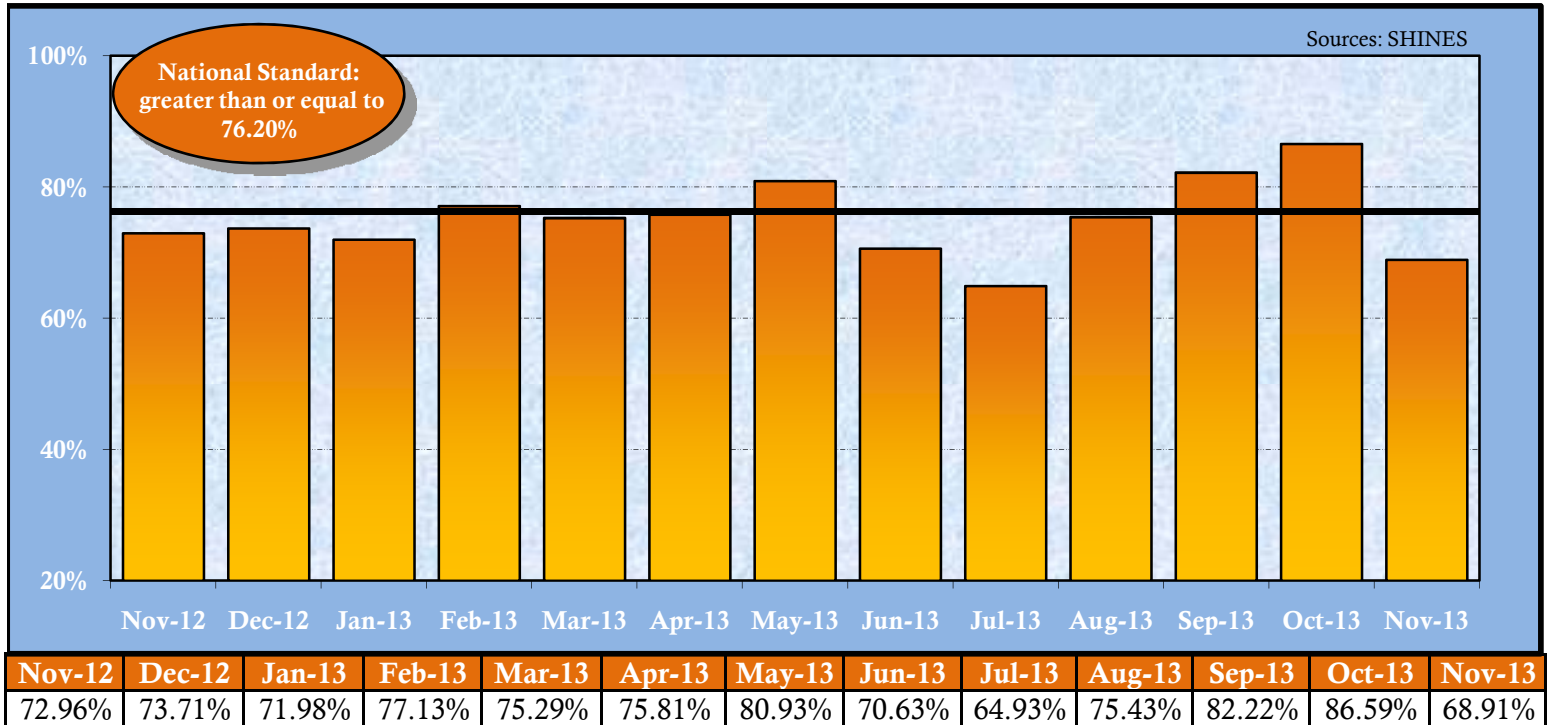
Nov-12	Dec-12	Jan-13	Feb-13	Mar-13	Apr-13	May-13	Jun-13	Jul-13	Aug-13	Sep-13	Oct-13	Nov-13
456	331	470	498	523	467	514	438	457	554	566	534	533
420	459	373	415	373	422	382	505	543	558	494	410	446

Foster Care Re-Entry Rate (November 2012 - November 2013)



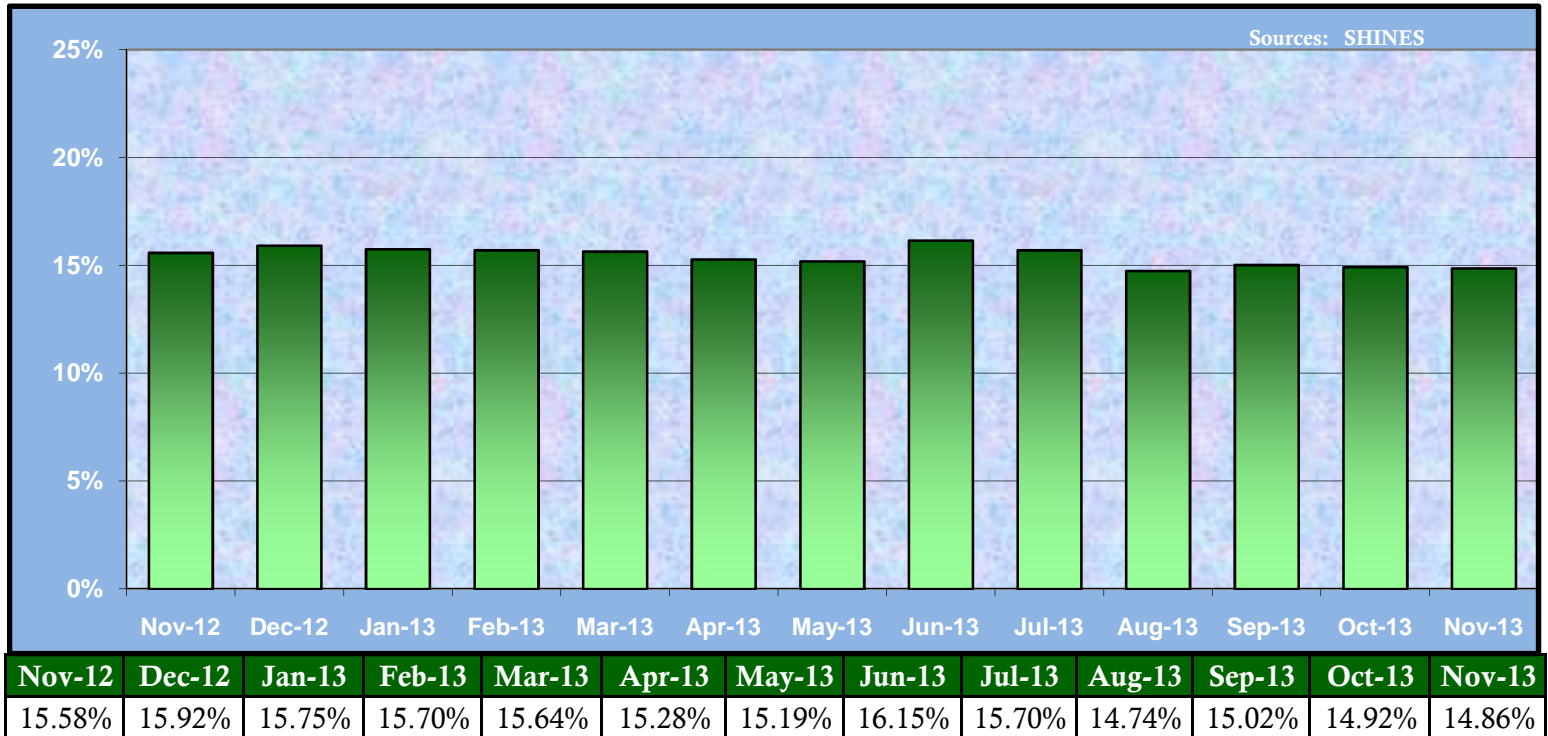
Length of Time to Reunification (November 2012 - November 2013)

Def: Percentage of children who exited care during the month through reunification with their family that reunified in less than 12 months from the date of their last removal.



Percent of Children Placed with Relatives (November 2012 – November 2013)

Def: Of all children in DFCS custody, the percentage that are placed with a relative or relative foster home.



Number of Finalized Adoptions (November 2012 – November 2013)

Def: The number of children whose adoption was finalized. Totals for all months are updated.

