

Department of Human Services



Georgia Division of Family & Children Services

DESCRIPTIVE DATA BY COUNTY
State Fiscal Year 2012

Georgia Division of Family & Children Services

SFY 2012 DESCRIPTIVE DATA BY COUNTY



DHS

Report Compiled by:

Federal Regulations & Data Section
Division of Family & Children Services

Department of Human Services
Division of Family & Children Services
Federal Regulations & Data Section
Two Peachtree Street, N.W., Suite 19-405
Atlanta, Georgia 30303

**DIVISION OF FAMILY AND CHILDREN SERVICES
DESCRIPTIVE DATA FOR STATE FISCAL YEAR 2012**

TABLE OF CONTENTS

Temporary Assistance to Needy Families SFY 2012	3
TANF Caseload Change from June 2011 – June 2012	7
Temporary Assistance to Needy Families by Race/Ethnicity for Recipients	
June 2012	11
Temporary Assistance to Needy Families by Age for Recipients June 2012.....	15
TANF Unduplicated Case for SFY 2012	19
Food Stamps SFY 2012.....	25
Georgia Food Stamp Households.....	29
Food Stamp Recipients by Race and Ethnicity June 2012	31
Food Stamp Recipients by Age June 2012.....	35
ARM Medicaid – Monthly Average Cases SFY 2012	41
Aged, Blind and Disabled Medicaid – Monthly Average Cases SFY 2012	46
Medicaid – Purchased Services by Recipient’s County of Residence SFY 2012.....	51
Payments by Category for Children in Childcare – Monthly Average Children	
Receiving Payment SFY 2012	57
Payments by Category for Children in Childcare – Annual Expenditures SFY 2012	62
Foster Care per Diem Clients – Monthly Average Clients SFY 2012	66
Foster Care Annual Expenditures SFY 2012.....	71
Family Preservation Services SFY 2012	75
Family Preservation Services Expenditures SFY 2012	80
Georgia Child Protective Services SFY 2012	86
U.S. Census Data – Georgia Population by County 2010	91
U.S. Census Data – Georgia Poverty by County 2010	96

**TEMPORARY ASSISTANCE TO NEEDY
FAMILIES (TANF)**

TANF

PROGRAM DESCRIPTION:

Temporary Assistance to Needy Families (TANF) replaced AFDC as a cash assistance program for needy families with the passage of the federal law "Personal Responsibility and Work Opportunity Reconciliation Act of 1996". TANF began for Georgia on July 1, 1997.

DATA TABLE DESCRIPTION:

TEMPORARY ASSISTANCE TO NEEDY FAMILIES SFY 2012

FAMILIES: One or more individuals receiving benefits.

RECIPIENTS: An individual who receives public assistance.

PROCEDURE:

The total number of active families, active adults and active children average for the SFY by category for each county. The Recipients is the sum of adults plus sum of children. Total Annual Benefits is the sum of monthly benefit amount. The State Total is the sum of each category.

TEMPORARY ASSISTANCE to NEEDY FAMILIES

STATE FISCAL YEAR 2012

COUNTY	MONTHLY AVERAGES				TOTAL ANNUAL BENEFITS
	FAMILIES	ADULTS	CHILDREN	RECIPIENTS	
APPLING	46	1	65	66	\$102,697
ATKINSON	14	0	18	18	\$31,356
BACON	23	0	37	37	\$56,970
BAKER	3	0	5	5	\$9,092
BALDWIN	140	35	230	265	\$364,351
BANKS	18	3	30	33	\$104,884
BARROW	13	7	23	30	\$91,998
BARTOW	149	28	237	265	\$544,276
BEN HILL	61	1	98	99	\$165,046
BERRIEN	26	0	36	36	\$63,275
BIBB	641	127	1,104	1,231	\$1,657,949
BLECKLEY	33	6	54	60	\$88,465
BRANTLEY	50	0	73	73	\$116,204
BROOKS	33	0	57	57	\$85,997
BRYAN	14	0	20	20	\$36,535
BULLOCH	134	8	207	215	\$324,318
BURKE	79	14	135	149	\$194,178
BUTTS	4	2	8	10	\$32,157
CALHOUN	3	2	4	6	\$9,970
CAMDEN	48	2	73	75	\$116,023
CANDLER	54	6	81	87	\$266,286
CARROLL	388	5	604	609	\$974,232
CATOOSA	80	4	125	129	\$563,230
CHARLTON	16	0	22	22	\$35,314
CHATHAM	204	4	300	304	\$472,664
CHATTAHOOCHEE	14	3	20	23	\$46,258
CHATTOOGA	10	3	18	21	\$105,994
CHEROKEE	77	23	137	160	\$452,806
CLARKE	191	84	340	424	\$737,539
CLAY	16	3	24	27	\$52,196
CLAYTON	1,091	164	1,878	2,042	\$3,100,348
CLINCH	24	0	46	46	\$61,791
COBB	1,161	413	2,053	2,466	\$3,577,710
COFFEE	110	0	184	184	\$281,116
COLQUITT	17	1	31	32	\$63,318
COLUMBIA	87	11	131	142	\$211,373
COOK	27	0	41	41	\$62,202
COWETA	16	9	27	36	\$91,990
CRAWFORD	29	4	45	49	\$75,979
CRISP	47	6	81	87	\$145,011
DADE	0	0	1	1	\$2,975
DAWSON	1	0	2	2	\$10,897
DECATUR	26	2	46	48	\$77,423
DEKALB	1,632	672	2,731	3,403	\$4,483,255
DODGE	59	7	95	102	\$147,427
DOOLY	20	2	33	35	\$63,154
DOUGHERTY	1,156	273	1,967	2,240	\$2,963,849
DOUGLAS	116	28	195	223	\$701,419
EARLY	8	0	14	14	\$20,826
ECHOLS	1	0	2	2	\$3,386
EFFINGHAM	42	0	65	65	\$104,602
ELBERT	286	10	426	436	\$1,003,989
EMANUEL	61	1	94	95	\$247,052
EVANS	58	22	93	115	\$167,761

TEMPORARY ASSISTANCE to NEEDY FAMILIES

STATE FISCAL YEAR 2012

COUNTY	MONTHLY AVERAGES				TOTAL ANNUAL BENEFITS
	FAMILIES	ADULTS	CHILDREN	RECIPIENTS	
FANNIN	9	4	18	22	\$48,240
FAYETTE	4	0	5	5	\$27,006
FLOYD	187	26	314	340	\$481,662
FORSYTH	12	12	19	31	\$66,806
FRANKLIN	16	3	28	31	\$106,037
FULTON	2,473	969	4,259	5,228	\$6,848,885
GILMER	1	0	1	1	\$8,423
GLASCOCK	7	2	14	16	\$22,769
GLYNN	126	3	215	218	\$308,951
GORDON	56	3	91	94	\$195,539
GRADY	22	8	30	38	\$61,763
GREENE	6	3	10	13	\$38,036
GWINNETT	648	189	1,178	1,367	\$1,768,785
HABERSHAM	8	1	12	13	\$52,292
HALL	518	88	874	962	\$1,596,260
HANCOCK	24	5	33	38	\$56,922
HARALSON	55	1	86	87	\$137,640
HARRIS	27	3	44	47	\$81,263
HART	38	20	56	76	\$187,133
HEARD	8	2	11	13	\$97,653
HENRY	14	2	22	24	\$115,791
HOUSTON	296	87	502	589	\$787,385
IRWIN	21	0	32	32	\$49,425
JACKSON	12	1	18	19	\$83,415
JASPER	2	0	2	2	\$12,952
JEFF DAVIS	38	6	61	67	\$95,025
JEFFERSON	70	10	129	139	\$178,523
JENKINS	40	8	62	70	\$97,713
JOHNSON	37	5	51	56	\$82,188
JONES	58	8	93	101	\$145,393
LAMAR	39	32	69	101	\$165,563
LANIER	14	0	19	19	\$27,696
LAURENS	124	29	194	223	\$313,284
LEE	14	1	22	23	\$31,384
LIBERTY	63	6	103	109	\$154,470
LINCOLN	16	1	22	23	\$36,105
LONG	28	1	46	47	\$66,784
LOWNDES	190	2	308	310	\$457,027
LUMPKIN	6	1	9	10	\$46,286
MACON	99	15	165	180	\$1,100,724
MADISON	15	11	26	37	\$101,825
MARION	33	11	49	60	\$100,602
MCDUFFIE	59	7	107	114	\$151,028
MCINTOSH	22	0	33	33	\$47,700
MERIWETHER	86	2	127	129	\$387,690
MILLER	1	0	3	3	\$4,759
MITCHELL	21	7	29	36	\$70,205
MONROE	42	5	63	68	\$107,656
MONTGOMERY	30	8	43	51	\$74,240
MORGAN	2	1	4	5	\$30,603
MURRAY	10	2	14	16	\$159,441
MUSCOGEE	638	206	1,063	1,269	\$1,792,830
NEWTON	191	51	321	372	\$620,843
OCONEE	1	0	1	1	\$7,828

TEMPORARY ASSISTANCE to NEEDY FAMILIES

STATE FISCAL YEAR 2012

COUNTY	MONTHLY AVERAGES				TOTAL ANNUAL BENEFITS
	FAMILIES	ADULTS	CHILDREN	RECIPIENTS	
OGLETHORPE	7	6	12	18	\$107,481
PAULDING	121	9	183	192	\$307,426
PEACH	94	18	155	173	\$235,974
PICKENS	388	10	621	631	\$1,237,782
PIERCE	34	0	56	56	\$84,953
PIKE	7	0	10	10	\$67,258
POLK	107	10	196	206	\$288,732
PULASKI	32	5	50	55	\$85,435
PUTNAM	59	9	88	97	\$144,047
QUITMAN	11	1	22	23	\$28,686
RABUN	1	0	1	1	\$5,580
RANDOLPH	37	14	62	76	\$112,952
RICHMOND	665	180	1,112	1,292	\$1,674,897
ROCKDALE	132	23	225	248	\$455,992
SCHLEY	12	1	17	18	\$31,635
SCREVEN	57	6	88	94	\$139,054
SEMINOLE	4	0	5	5	\$9,896
SPALDING	408	3	639	642	\$1,055,382
STEPHENS	57	31	98	129	\$288,469
STEWART	12	5	18	23	\$34,557
SUMTER	112	13	171	184	\$329,809
TALBOT	17	4	25	29	\$52,717
TALIAFERRO	7	0	14	14	\$17,916
TATTNALL	63	12	97	109	\$162,390
TAYLOR	21	6	35	41	\$68,773
TELFAIR	33	5	55	60	\$82,842
TERRELL	35	7	56	63	\$89,708
THOMAS	8	2	16	18	\$27,776
TIFT	94	1	159	160	\$226,202
TOOMBS	90	7	140	147	\$215,452
TOWNS	0	0	0	0	\$2,936
TREUTLEN	26	5	47	52	\$71,427
TROUP	6	0	10	10	\$63,182
TURNER	13	0	32	32	\$40,267
TWIGGS	30	5	47	52	\$79,391
UNION	2	1	4	5	\$15,867
UPSON	7	1	10	11	\$43,642
WALKER	11	2	17	19	\$137,651
WALTON	337	6	523	529	\$925,561
WARE	106	1	181	182	\$263,813
WARREN	14	2	19	21	\$33,662
WASHINGTON	63	15	95	110	\$153,357
WAYNE	75	5	118	123	\$181,459
WEBSTER	8	0	10	10	\$18,548
WHEELER	14	3	20	23	\$35,406
WHITE	7	0	10	10	\$55,013
WHITFIELD	2	1	4	5	\$16,960
WILCOX	24	3	37	40	\$59,677
WILKES	28	9	37	46	\$66,313
WILKINSON	24	7	48	55	\$72,424
WORTH	16	0	21	21	\$40,326
STATE TOTAL	18,772	4,318	31,292	35,610	\$55,514,216

SOURCE: State TANF File

TANF

PROGRAM DESCRIPTION:

Temporary Assistance to Needy Families (TANF) replaced AFDC as a cash assistance program for needy families with the passage of the federal law "Personal Responsibility and Work Opportunity Reconciliation Act of 1996". TANF began for Georgia on July 1, 1997.

DATA TABLE DESCRIPTION:

TANF CASELOAD CHANGE FROM JUNE 2011 TO JUNE 2012

JUNE 2011: Number of active caseload in the reporting month of June 2011.

JUNE 2012: Number of active caseload in the reporting month of June 2012.

PROCEDURE:

The number of active caseload in the reporting month of June is total by county. The Numeric Change is the sum of June 2012 caseload minus the sum of June 2011 caseload. The Percent Change is the Numeric Change divided by June 2011 caseload. The State Total is the sum of June 2011 caseload, June 2012 caseload and the Numeric Change.

TANF CASELOAD FROM JUNE 2011 TO JUNE 2012

COUNTY	JUNE 2011	JUNE 2012	NUMERIC CHANGE	PERCENTAGE CHANGE
APPLING	47	50	3	6.4%
ATKINSON	12	13	1	8.3%
BACON	22	26	4	18.2%
BAKER	17	4	-13	-76.5%
BALDWIN	142	150	8	5.6%
BANKS	37	1	-36	-97.3%
BARROW	88	5	-83	-94.3%
BARTOW	136	174	38	27.9%
BEN HILL	49	53	4	8.2%
BERRIEN	26	26	0	0.0%
BIBB	638	621	-17	-2.7%
BLECKLEY	27	32	5	18.5%
BRANTLEY	52	47	-5	-9.6%
BROOKS	37	28	-9	-24.3%
BRYAN	14	11	-3	-21.4%
BULLOCH	143	129	-14	-9.8%
BURKE	88	79	-9	-10.2%
BUTTS	38	4	-34	-89.5%
CALHOUN	9	3	-6	-66.7%
CAMDEN	54	45	-9	-16.7%
CANDLER	56	40	-16	-28.6%
CARROLL	274	376	102	37.2%
CATOOSA	79	10	-69	-87.3%
CHARLTON	15	20	5	33.3%
CHATHAM	227	191	-36	-15.9%
CHATTAHOOCHEE	17	9	-8	-47.1%
CHATTOOGA	54	10	-44	-81.5%
CHEROKEE	125	114	-11	-8.8%
CLARKE	284	20	-264	-93.0%
CLAY	28	16	-12	-42.9%
CLAYTON	891	1199	308	34.6%
CLINCH	23	30	7	30.4%
COBB	1,061	906	-155	-14.6%
COFFEE	139	105	-34	-24.5%
COLQUITT	154	23	-131	-85.1%
COLUMBIA	86	91	5	5.8%
COOK	35	21	-14	-40.0%
COWETA	167	22	-145	-86.8%
CRAWFORD	32	21	-11	-34.4%
CRISP	74	53	-21	-28.4%
DADE	14	0	-14	-100.0%
DAWSON	18	0	-18	-100.0%
DECATUR	96	19	-77	-80.2%
DEKALB	1,553	1710	157	10.1%
DODGE	58	61	3	5.2%
DOOLY	27	22	-5	-18.5%
DOUGHERTY	602	1106	504	83.7%
DOUGLAS	251	240	-11	-4.4%
EARLY	39	7	-32	-82.1%
ECHOLS	2	2	0	0.0%
EFFINGHAM	55	33	-22	-40.0%
ELBERT	106	422	316	298.1%
EMANUEL	80	70	-10	-12.5%
EVANS	54	52	-2	-3.7%

TANF CASELOAD FROM JUNE 2011 TO JUNE 2012

COUNTY	JUNE 2011	JUNE 2012	NUMERIC CHANGE	PERCENTAGE CHANGE
FANNIN	22	8	-14	-63.6%
FAYETTE	50	10	-40	-80.0%
FLOYD	194	165	-29	-14.9%
FORSYTH	69	21	-48	-69.6%
FRANKLIN	43	0	-43	-100.0%
FULTON	2,455	2366	-89	-3.6%
GILMER	19	1	-18	-94.7%
GLASCOCK	7	5	-2	-28.6%
GLYNN	132	115	-17	-12.9%
GORDON	85	2	-83	-97.6%
GRADY	49	27	-22	-44.9%
GREENE	29	4	-25	-86.2%
GWINNETT	601	700	99	16.5%
HABERSHAM	41	0	-41	-100.0%
HALL	279	593	314	112.5%
HANCOCK	21	28	7	33.3%
HARALSON	43	56	13	30.2%
HARRIS	33	27	-6	-18.2%
HART	66	23	-43	-65.2%
HEARD	32	4	-28	-87.5%
HENRY	225	14	-211	-93.8%
HOUSTON	296	271	-25	-8.4%
IRWIN	21	18	-3	-14.3%
JACKSON	75	0	-75	-100.0%
JASPER	32	1	-31	-96.9%
JEFF DAVIS	43	34	-9	-20.9%
JEFFERSON	75	66	-9	-12.0%
JENKINS	42	38	-4	-9.5%
JOHNSON	37	32	-5	-13.5%
JONES	56	60	4	7.1%
LAMAR	41	29	-12	-29.3%
LANIER	22	15	-7	-31.8%
LAURENS	123	128	5	4.1%
LEE	23	13	-10	-43.5%
LIBERTY	64	55	-9	-14.1%
LINCOLN	19	15	-4	-21.1%
LONG	28	23	-5	-17.9%
LOWNDES	191	184	-7	-3.7%
LUMPKIN	25	0	-25	-100.0%
MACON	37	32	-5	-13.5%
MADISON	30	14	-16	-53.3%
MARION	36	32	-4	-11.1%
MCDUFFIE	60	60	0	0.0%
MCINTOSH	24	22	-2	-8.3%
MERIWETHER	57	90	33	57.9%
MILLER	21	0	-21	-100.0%
MITCHELL	75	26	-49	-65.3%
MONROE	42	45	3	7.1%
MONTGOMERY	33	28	-5	-15.2%
MORGAN	39	0	-39	-100.0%
MURRAY	101	3	-98	-97.0%
MUSCOGEE	641	614	-27	-4.2%
NEWTON	237	168	-69	-29.1%
OCONEE	18	0	-18	-100.0%

TANF CASELOAD FROM JUNE 2011 TO JUNE 2012

COUNTY	JUNE 2011	JUNE 2012	NUMERIC CHANGE	PERCENTAGE CHANGE
OGLETHORPE	14	63	49	350.0%
PAULDING	122	104	-18	-14.8%
PEACH	105	89	-16	-15.2%
PICKENS	46	479	433	941.3%
PIERCE	30	35	5	16.7%
PIKE	22	16	-6	-27.3%
POLK	118	91	-27	-22.9%
PULASKI	40	24	-16	-40.0%
PUTNAM	61	53	-8	-13.1%
QUITMAN	15	9	-6	-40.0%
RABUN	11	1	-10	-90.9%
RANDOLPH	41	41	0	0.0%
RICHMOND	704	638	-66	-9.4%
ROCKDALE	182	4	-178	-97.8%
SCHLEY	10	13	3	30.0%
SCREVEN	57	52	-5	-8.8%
SEMINOLE	25	2	-23	-92.0%
SPALDING	294	407	113	38.4%
STEPHENS	75	37	-38	-50.7%
STEWART	14	7	-7	-50.0%
SUMTER	156	121	-35	-22.4%
TALBOT	16	22	6	37.5%
TALIAFERRO	7	7	0	0.0%
TATTNALL	63	56	-7	-11.1%
TAYLOR	30	20	-10	-33.3%
TELFAIR	38	30	-8	-21.1%
TERRELL	45	28	-17	-37.8%
THOMAS	93	5	-88	-94.6%
TIFT	94	88	-6	-6.4%
TOOMBS	108	85	-23	-21.3%
TOWNS	5	0	-5	-100.0%
TREUTLEN	26	21	-5	-19.2%
TROUP	29	1	-28	-96.6%
TURNER	19	12	-7	-36.8%
TWIGGS	28	28	0	0.0%
UNION	11	0	-11	-100.0%
UPSON	62	2	-60	-96.8%
WALKER	91	7	-84	-92.3%
WALTON	166	320	154	92.8%
WARE	115	102	-13	-11.3%
WARREN	14	18	4	28.6%
WASHINGTON	58	60	2	3.4%
WAYNE	77	75	-2	-2.6%
WEBSTER	8	9	1	12.5%
WHEELER	13	20	7	53.8%
WHITE	32	2	-30	-93.8%
WHITFIELD	98	3	-95	-96.9%
WILCOX	18	27	9	50.0%
WILKES	34	18	-16	-47.1%
WILKINSON	26	22	-4	-15.4%
WORTH	41	15	-26	-63.4%
STATE TOTAL	19,218	18,196	-1,022	-5.3%

SOURCE: State TANF File

TANF

PROGRAM DESCRIPTION:

Temporary Assistance to Needy Families (TANF) replaced AFDC as a cash assistance program for needy families with the passage of the federal law "Personal Responsibility and Work Opportunity Reconciliation Act of 1996". TANF began for Georgia on July 1, 1997.

DATA TABLE DESCRIPTION:

TANF BY RACE/ETHNICITY FOR RECIPIENTS JUNE 2012

RECIPIENTS: An individual who receives public assistance.

PROCEDURE:

The number of active recipients in the reporting month of June is group by ethnicity and by race for each county. The State Total is the sum of each category.

TEMPORARY ASSISTANCE to NEEDY FAMILIES

BY RACE/ETHICITY FOR RECIPIENTS

JUNE 2012

COUNTY	LATINO						NON-LATINO					
	WHITE	BLACK	Pacific Islander/ Alaskan	ASIAN	NATIVE AMERICAN	OTHER	WHITE	BLACK	Pacific Islander/ Alaskan	ASIAN	NATIVE AMERICAN	OTHER
APPLING	1	0	0	0	0	0	49	26	0	0	0	0
ATKINSON	0	1	0	0	0	0	7	9	0	0	0	0
BACON	0	0	0	0	0	0	18	21	0	0	0	0
BAKER	0	0	0	0	0	0	1	5	0	0	0	0
BALDWIN	0	0	0	0	0	0	53	259	0	0	0	2
BANKS	0	0	0	0	0	0	2	0	0	0	0	0
BARROW	1	0	0	0	0	0	4	3	0	0	0	0
BARTOW	11	0	0	0	0	0	201	136	0	0	0	6
BEN HILL	6	0	0	0	0	0	17	58	0	0	1	0
BERRIEN	0	0	0	0	0	0	29	6	0	0	0	0
BIBB	7	0	0	0	1	0	111	1,052	0	4	0	4
BLECKLEY	2	0	0	0	0	0	18	37	0	0	0	0
BRANTLEY	1	0	0	0	0	0	65	3	0	0	0	1
BROOKS	0	0	0	0	0	0	12	31	0	0	0	0
BRYAN	0	0	0	0	0	0	6	10	0	0	0	0
BULLOCH	4	1	0	0	0	4	41	146	0	0	0	5
BURKE	0	0	0	0	0	0	22	118	0	0	0	0
BUTTS	0	0	0	0	0	0	2	4	0	0	0	0
CALHOUN	0	0	0	0	0	0	0	6	0	0	0	0
CAMDEN	4	0	0	0	0	0	25	36	0	0	1	1
CANDLER	0	0	0	0	0	0	23	38	0	0	0	2
CARROLL	23	0	0	0	0	0	347	218	0	0	0	10
CATOOSA	0	0	0	0	0	0	17	4	0	0	0	0
CHARLTON	0	0	0	0	0	0	12	17	0	0	0	0
CHATHAM	2	0	0	0	0	1	43	227	0	1	0	3
CHATTAHOOCHEE	0	0	0	0	0	0	5	5	0	0	0	2
CHATTOOGA	0	0	0	0	0	0	12	5	0	0	0	0
CHEROKEE	45	2	0	0	0	4	112	65	0	1	0	2
CLARKE	1	0	0	0	0	0	10	32	0	0	0	0
CLAY	0	0	0	0	0	0	3	30	0	0	0	0
CLAYTON	189	9	4	1	0	10	329	1,712	0	4	0	25
CLINCH	0	0	0	0	0	0	13	38	0	0	0	1
COBB	198	9	0	0	1	13	276	1,411	0	10	0	25
COFFEE	10	0	1	0	0	0	62	102	0	0	0	0
COLQUITT	5	0	0	0	0	0	11	28	0	0	0	0
COLUMBIA	2	0	0	0	0	0	81	69	0	0	0	0
COOK	2	0	0	0	0	0	14	18	0	0	0	0
COWETA	0	0	0	0	0	0	13	33	0	1	0	0
CRAWFORD	0	0	0	0	0	0	13	22	0	0	0	0
CRISP	0	0	0	0	0	0	10	94	0	0	0	0
DADE	0	0	0	0	0	0	0	0	0	0	0	0
DAWSON	0	0	0	0	0	0	0	0	0	0	0	0
DECATUR	0	0	0	0	0	0	15	18	0	0	0	0
DEKALB	26	13	0	0	0	7	84	3,480	0	37	1	14
DODGE	0	0	0	0	0	0	22	82	0	0	0	2
DOOLY	7	0	0	0	0	0	10	21	0	0	0	0
DOUGHERTY	46	3	0	0	0	0	237	1,853	1	5	0	11
DOUGLAS	24	1	0	0	0	0	126	272	0	0	0	6
EARLY	2	0	0	0	0	0	1	9	0	0	0	0
ECHOLS	5	0	0	0	0	0	0	0	0	0	0	0
EFFINGHAM	0	0	0	0	0	0	30	21	0	0	0	1
ELBERT	56	1	1	0	0	0	232	359	0	0	0	7
EMANUEL	2	1	0	0	0	0	16	96	0	0	0	1
EVANS	5	0	0	0	0	0	16	79	0	0	0	1
FANNIN	0	0	0	0	0	0	22	0	0	0	0	0
FAYETTE	0	0	0	0	0	0	4	7	0	0	0	0
FLOYD	25	0	0	0	0	0	148	116	0	0	0	6
FORSYTH	0	0	0	0	0	0	50	2	0	0	0	0
FRANKLIN	0	0	0	0	0	0	0	0	0	0	0	0
FULTON	55	11	1	0	0	10	96	4,826	3	24	3	12
GILMER	0	0	0	0	0	0	1	0	0	0	0	0

TEMPORARY ASSISTANCE to NEEDY FAMILIES

BY RACE/ETHICITY FOR RECIPIENTS

JUNE 2012

COUNTY	LATINO						NON-LATINO					
	WHITE	BLACK	Pacific Islander/ Alaskan	ASIAN	NATIVE AMERICAN	OTHER	WHITE	BLACK	Pacific Islander/ Alaskan	ASIAN	NATIVE AMERICAN	OTHER
GLASCOCK	0	0	0	0	0	0	9	2	0	0	0	0
GLYNN	2	0	0	0	0	0	54	141	0	0	0	0
GORDON	2	0	0	0	0	0	3	0	0	0	0	0
GRADY	5	0	0	0	0	0	11	26	0	0	0	2
GREENE	0	0	0	0	0	0	1	8	0	0	0	0
GWINNETT	308	11	2	0	0	22	202	994	0	20	0	14
HABERSHAM	0	0	0	0	0	0	0	0	0	0	0	0
HALL	157	1	0	0	0	0	635	258	1	1	0	12
HANCOCK	0	0	0	0	0	0	2	44	0	0	0	0
HARALSON	0	0	0	0	0	0	82	1	0	0	0	5
HARRIS	1	0	0	0	0	0	33	11	0	0	0	0
HART	0	0	0	0	0	0	29	33	0	0	0	0
HEARD	0	0	0	0	0	0	3	5	0	0	0	0
HENRY	0	0	0	0	0	0	8	14	0	2	0	0
HOUSTON	41	0	0	0	0	0	131	364	0	0	0	5
IRWIN	2	0	0	0	0	0	10	17	0	0	0	0
JACKSON	0	0	0	0	0	0	0	0	0	0	0	0
JASPER	0	0	0	0	0	0	1	0	0	0	0	0
JEFF DAVIS	5	0	0	0	0	0	41	20	0	0	0	0
JEFFERSON	0	0	0	0	0	0	10	117	0	0	0	0
JENKINS	0	0	0	0	0	0	10	57	0	0	0	2
JOHNSON	0	0	0	0	0	0	16	33	0	0	0	0
JONES	0	0	0	0	0	0	38	68	0	0	0	0
LAMAR	4	1	0	0	0	0	11	64	0	0	0	1
LANIER	0	0	0	0	0	0	12	9	0	0	0	0
LAURENS	5	0	0	0	0	0	46	185	0	0	0	0
LEE	0	0	0	0	0	0	5	18	0	0	0	0
LIBERTY	1	1	0	0	0	0	17	72	0	1	0	0
LINCOLN	0	0	0	0	0	0	8	13	0	0	0	0
LONG	3	0	0	0	0	0	10	25	0	0	0	0
LOWNDES	19	0	0	0	0	0	70	207	0	1	0	2
LUMPKIN	0	0	0	0	0	0	0	0	0	0	0	0
MACON	1	1	0	0	0	0	4	47	0	0	0	0
MADISON	0	0	0	0	0	0	7	27	0	0	0	1
MARION	0	0	0	0	0	0	17	41	0	0	0	0
MCDUFFIE	0	0	0	0	0	0	39	73	0	0	0	5
MCINTOSH	0	0	0	0	0	0	16	18	0	0	0	0
MERIWETHER	3	0	0	0	0	0	59	72	0	0	0	2
MILLER	0	0	0	0	0	0	0	0	0	0	0	0
MITCHELL	0	0	0	0	0	0	4	41	0	0	0	0
MONROE	1	0	0	0	0	0	33	41	0	0	0	0
MONTGOMERY	1	0	0	0	0	0	13	33	0	0	0	0
MORGAN	0	0	0	0	0	0	0	0	0	0	0	0
MURRAY	0	0	0	0	0	0	3	0	0	0	0	0
MUSCOGEE	21	3	0	0	0	0	169	1,004	0	0	0	20
NEWTON	4	0	0	0	0	0	61	271	0	1	1	3
OCONEE	0	0	0	0	0	0	0	0	0	0	0	0
OGLETHORPE	5	0	0	0	0	0	10	159	0	0	0	5
PAULDING	6	0	0	0	0	1	94	60	0	0	0	4
PEACH	1	0	0	0	0	0	44	112	0	0	0	1
PICKENS	87	0	0	0	0	2	624	47	0	0	0	12
PIERCE	0	0	0	0	0	0	33	26	0	0	0	0
PIKE	0	0	0	0	0	0	7	18	0	1	0	1
POLK	39	1	0	0	0	1	72	55	0	0	0	0
PULASKI	3	0	0	0	0	0	15	20	0	0	0	0
PUTNAM	5	0	0	0	0	0	27	49	0	0	0	3
QUITMAN	0	0	0	0	0	0	4	12	0	0	0	0
RABUN	0	0	0	0	0	0	1	0	0	0	0	0
RANDOLPH	0	0	0	0	0	0	8	76	0	0	0	0
RICHMOND	4	0	0	0	0	1	160	1,090	1	0	1	6
ROCKDALE	0	0	0	0	0	0	0	6	0	0	0	0

TEMPORARY ASSISTANCE to NEEDY FAMILIES

BY RACE/ETHICITY FOR RECIPIENTS

JUNE 2012

COUNTY	LATINO						NON-LATINO					
	WHITE	BLACK	Pacific Islander/ Alaskan	ASIAN	NATIVE AMERICAN	OTHER	WHITE	BLACK	Pacific Islander/ Alaskan	ASIAN	NATIVE AMERICAN	OTHER
SCHLEY	0	0	0	0	0	0	9	12	0	0	0	0
SCREVEN	0	0	0	0	0	0	23	67	0	0	0	3
SEMINOLE	0	0	0	0	0	0	0	2	0	0	0	0
SPALDING	14	1	0	0	0	0	245	379	0	1	0	10
STEPHENS	2	0	0	0	0	0	68	25	0	0	1	0
STEWART	0	0	0	0	0	0	0	10	0	0	0	0
SUMTER	4	0	0	0	0	0	15	195	0	0	0	0
TALBOT	0	0	0	0	0	0	4	30	0	0	2	0
TALIAFERRO	2	0	0	0	0	0	3	9	0	0	0	0
TATTNALL	5	0	0	0	0	0	44	45	0	0	0	1
TAYLOR	0	0	0	0	0	0	10	28	0	0	0	0
TELFAIR	0	0	0	0	0	0	14	32	0	0	0	1
TERRELL	0	0	0	0	0	0	2	44	0	0	0	1
THOMAS	0	0	0	0	0	0	3	7	0	0	0	0
TIFT	29	0	0	0	0	0	33	84	0	0	0	0
TOOMBS	16	0	0	0	0	0	42	76	0	0	0	1
TOWNS	0	0	0	0	0	0	0	0	0	0	0	0
TREUTLEN	0	0	0	0	0	0	13	22	0	0	0	1
TROUP	0	0	0	0	0	0	1	0	0	0	0	0
TURNER	0	0	0	0	0	0	5	28	0	0	0	0
TWIGGS	0	0	0	0	0	0	14	30	0	0	0	0
UNION	0	0	0	0	0	0	0	0	0	0	0	0
UPSON	0	0	0	0	0	0	3	0	0	0	0	0
WALKER	0	0	0	0	0	0	8	6	0	0	0	0
WALTON	22	1	0	0	0	1	234	234	0	5	0	5
WARE	2	0	0	0	0	0	65	101	0	0	0	4
WARREN	0	0	0	0	0	0	6	21	0	0	0	0
WASHINGTON	0	0	0	0	0	0	21	81	0	0	0	0
WAYNE	12	0	0	0	0	0	51	60	0	0	0	1
WEBSTER	0	0	0	0	0	0	3	10	0	0	0	0
WHEELER	0	0	0	0	0	0	18	15	0	0	0	0
WHITE	0	0	0	0	0	0	3	0	0	0	0	0
WHITFIELD	2	0	0	0	0	0	7	0	0	0	0	0
WILCOX	0	0	0	0	0	0	13	32	0	0	0	1
WILKES	1	0	0	0	0	0	9	17	0	0	0	0
WILKINSON	0	0	0	0	0	0	15	39	0	0	0	0
WORTH	0	0	0	0	0	0	6	15	0	0	0	0
STATE TOTAL	1,614	73	9	1	2	77	7,241	25,335	6	120	11	285

SOURCE: State TANF File

TANF

PROGRAM DESCRIPTION:

Temporary Assistance to Needy Families (TANF) replaced AFDC as a cash assistance program for needy families with the passage of the federal law "Personal Responsibility and Work Opportunity Reconciliation Act of 1996". TANF began for Georgia on July 1, 1997.

DATA TABLE DESCRIPTION:

TANF BY AGE FOR RECIPIENTS JUNE 2012

RECIPIENTS: An individual who receives public assistance.

PROCEDURE:

The number of active recipients in the reporting month of June is group by age for each county. The State Total is the sum of each age group.

TEMPORARY ASSISTANCE to NEEDY FAMILIES

BY AGE
JUNE 2012

COUNTY	AGE 0-6	AGE 7-15	AGE 16-17	AGE 18-21	AGE 22-34	AGE 35-44	AGE 45-64	AGE 65+
APPLING	29	40	5	1	1	0	0	0
ATKINSON	8	7	1	1	0	0	0	0
BACON	15	19	4	1	0	0	0	0
BAKER	3	2	0	1	0	0	0	0
BALDWIN	127	118	18	12	32	7	0	0
BANKS	0	1	1	0	0	0	0	0
BARROW	4	1	0	2	1	0	0	0
BARTOW	118	133	30	12	40	15	6	0
BEN HILL	22	48	9	2	1	0	0	0
BERRIEN	9	19	6	1	0	0	0	0
BIBB	444	495	106	50	70	12	3	0
BLECKLEY	23	24	4	3	3	0	0	0
BRANTLEY	28	34	7	0	1	0	0	0
BROOKS	15	23	3	2	0	0	0	0
BRYAN	8	7	0	1	0	0	0	0
BULLOCH	65	113	15	4	4	0	0	0
BURKE	38	74	16	7	6	0	1	0
BUTTS	1	3	2	0	0	0	0	0
CALHOUN	1	4	0	1	0	0	0	0
CAMDEN	21	39	3	3	1	0	0	0
CANDLER	16	40	3	3	0	1	0	0
CARROLL	191	323	66	18	0	0	0	0
CATOOSA	6	9	2	1	1	1	1	0
CHARLTON	9	15	4	1	0	0	0	0
CHATHAM	66	162	40	9	0	0	0	0
CHATTAHOOCHEE	3	7	1	0	1	0	0	0
CHATTOOGA	6	8	1	1	1	0	0	0
CHEROKEE	85	114	9	5	13	4	1	0
CLARKE	17	10	2	3	9	1	1	0
CLAY	10	17	3	1	2	0	0	0
CLAYTON	827	1,049	175	76	142	18	5	0
CLINCH	15	33	3	0	1	0	0	0
COBB	736	725	135	75	203	52	21	0
COFFEE	58	97	18	1	1	0	0	0
COLQUITT	13	22	6	2	1	0	0	0
COLUMBIA	54	69	13	6	8	2	0	0
COOK	7	24	2	0	1	0	0	0
COWETA	22	9	1	4	9	2	0	0
CRAWFORD	10	17	6	2	0	0	0	0
CRISP	41	46	5	6	5	1	0	0
DADE	0	0	0	0	0	0	0	0
DAWSON	0	0	0	0	0	0	0	0
DECATUR	7	23	1	1	1	0	0	0
DEKALB	1,407	1,175	252	231	480	91	32	0
DODGE	43	43	11	3	5	1	0	0
DOOLY	14	15	5	3	0	1	0	0
DOUGHERTY	838	814	176	136	175	15	3	0
DOUGLAS	159	195	35	12	24	8	1	0
EARLY	4	5	3	0	0	0	0	0
ECHOLS	3	2	0	0	0	0	0	0
EFFINGHAM	17	29	4	2	0	0	0	0
ELBERT	218	332	77	28	0	1	0	0
EMANUEL	52	42	9	8	4	0	1	0
EVANS	48	28	9	5	10	1	0	0
FANNIN	9	5	1	1	4	2	0	0
FAYETTE	5	5	1	0	0	0	0	0
FLOYD	107	136	25	8	14	4	1	0
FORSYTH	16	14	3	1	12	2	4	0
FRANKLIN	0	0	0	0	0	0	0	0

TEMPORARY ASSISTANCE to NEEDY FAMILIES

BY AGE
JUNE 2012

COUNTY	AGE 0-6	AGE 7-15	AGE 16-17	AGE 18-21	AGE 22-34	AGE 35-44	AGE 45-64	AGE 65+
FULTON	1,904	1,771	352	346	527	103	43	0
GILMER	1	0	0	0	0	0	0	0
GLASCOCK	4	4	2	0	1	0	0	0
GLYNN	55	117	20	5	0	0	0	0
GORDON	4	0	0	0	1	0	0	0
GRADY	21	13	2	5	3	0	0	0
GREENE	4	2	0	0	3	0	0	0
GWINNETT	601	599	95	48	164	46	20	0
HABERSHAM	0	0	0	0	0	0	0	0
HALL	348	520	94	29	51	13	11	0
HANCOCK	20	8	8	4	5	0	1	0
HARALSON	26	50	6	5	1	0	0	0
HARRIS	12	27	3	0	2	1	0	0
HART	29	10	0	4	15	2	2	0
HEARD	5	2	1	0	0	0	0	0
HENRY	10	12	1	1	0	0	0	0
HOUSTON	215	210	30	24	48	9	5	0
IRWIN	8	20	1	0	0	0	0	0
JACKSON	0	0	0	0	0	0	0	0
JASPER	0	1	0	0	0	0	0	0
JEFF DAVIS	28	29	3	1	4	1	0	0
JEFFERSON	41	59	14	7	6	0	0	0
JENKINS	24	32	4	4	5	0	0	0
JOHNSON	14	23	4	4	4	0	0	0
JONES	42	48	3	4	9	0	0	0
LAMAR	42	12	1	8	15	3	0	0
LANIER	4	15	2	0	0	0	0	0
LAURENS	85	89	22	15	18	5	2	0
LEE	11	10	1	1	1	0	0	0
LIBERTY	25	54	12	0	1	0	0	0
LINCOLN	6	13	2	0	0	0	0	0
LONG	8	25	4	1	0	0	0	0
LOWNDES	89	168	31	9	1	1	0	0
LUMPKIN	0	0	0	0	0	0	0	0
MACON	14	30	5	2	1	1	0	0
MADISON	17	5	0	7	5	1	0	0
MARION	20	23	2	4	8	1	0	0
MCDUFFIE	42	50	12	5	7	1	0	0
MCINTOSH	11	17	4	1	1	0	0	0
MERIWETHER	51	64	13	7	1	0	0	0
MILLER	0	0	0	0	0	0	0	0
MITCHELL	21	11	5	2	5	1	0	0
MONROE	16	45	4	4	2	4	0	0
MONTGOMERY	16	23	2	2	4	0	0	0
MORGAN	0	0	0	0	0	0	0	0
MURRAY	2	1	0	0	0	0	0	0
MUSCOGEE	501	440	86	58	110	17	5	0
NEWTON	125	133	21	19	37	6	1	0
OCONEE	0	0	0	0	0	0	0	0
OGLETHORPE	82	32	5	14	41	3	2	0
PAULDING	48	101	11	4	0	1	0	0
PEACH	58	76	12	4	7	2	0	0
PICKENS	242	429	82	18	1	1	0	0
PIERCE	14	36	8	1	0	0	0	0
PIKE	12	13	1	0	0	1	0	0
POLK	63	82	15	3	4	1	0	0
PULASKI	8	22	6	1	1	0	0	0
PUTNAM	27	44	9	1	2	1	0	0
QUITMAN	1	12	2	1	0	0	0	0

TEMPORARY ASSISTANCE to NEEDY FAMILIES

BY AGE
JUNE 2012

COUNTY	AGE 0-6	AGE 7-15	AGE 16-17	AGE 18-21	AGE 22-34	AGE 35-44	AGE 45-64	AGE 65+
RABUN	0	0	1	0	0	0	0	0
RANDOLPH	34	24	8	5	11	1	1	0
RICHMOND	485	498	89	59	113	14	5	0
ROCKDALE	2	3	0	0	1	0	0	0
SCHLEY	6	11	0	3	1	0	0	0
SCREVEN	38	41	5	3	6	0	0	0
SEMINOLE	1	1	0	0	0	0	0	0
SPALDING	180	389	66	15	0	0	0	0
STEPHENS	38	23	2	2	24	6	1	0
STEWART	3	5	1	0	1	0	0	0
SUMTER	63	99	27	14	9	2	0	0
TALBOT	9	18	4	1	4	0	0	0
TALIAFERRO	5	4	4	1	0	0	0	0
TATTNALL	36	40	8	3	7	1	0	0
TAYLOR	18	10	3	5	2	0	0	0
TELFAIR	9	29	3	5	0	0	1	0
TERRELL	11	22	6	5	3	0	0	0
THOMAS	1	5	3	1	0	0	0	0
TIFT	57	68	18	3	0	0	0	0
TOOMBS	37	79	16	2	1	0	0	0
TOWNS	0	0	0	0	0	0	0	0
TREUTLEN	10	24	2	0	0	0	0	0
TROUP	0	1	0	0	0	0	0	0
TURNER	12	17	3	1	0	0	0	0
TWIGGS	13	20	7	0	3	1	0	0
UNION	0	0	0	0	0	0	0	0
UPSON	1	2	0	0	0	0	0	0
WALKER	6	2	1	2	2	0	1	0
WALTON	150	284	51	17	0	0	0	0
WARE	65	86	18	3	0	0	0	0
WARREN	8	12	2	2	3	0	0	0
WASHINGTON	31	46	10	5	6	3	1	0
WAYNE	48	64	7	2	3	0	0	0
WEBSTER	3	4	4	2	0	0	0	0
WHEELER	12	15	0	2	3	1	0	0
WHITE	0	2	1	0	0	0	0	0
WHITFIELD	3	5	0	0	1	0	0	0
WILCOX	19	17	5	1	4	0	0	0
WILKES	12	9	2	0	1	3	0	0
WILKINSON	22	22	3	3	4	0	0	0
WORTH	8	8	3	1	1	0	0	0
STATE TOTAL	12,651	14,504	2,743	1,608	2,623	500	183	0

SOURCE: State TANF File

TANF

PROGRAM DESCRIPTION:

Temporary Assistance to Needy Families (TANF) replaced AFDC as a cash assistance program for needy families with the passage of the federal law "Personal Responsibility and Work Opportunity Reconciliation Act of 1996". TANF began for Georgia on July 1, 1997.

DATA TABLE DESCRIPTION:

TANF UNDUPLICATED CASE FOR SFY 2012

CASE: An assistance unit (AU) may also be referred to as a case. A case is also referred to in Social Services and other programs.

PROCEDURE:

The number of active unduplicated cases counted for the SFY by county. The total unduplicated case is counted by each month range group. The State Total is the sum of for each category.

TEMPORARY ASSISTANCE to NEEDY FAMILIES

UNDUPLICATED CASES FY 2012

COUNTY	Number of Unduplicated Cases	Number who have been on TANF for:			
		1-3 Months	4-7 Months	8-11 Months	12 Months
APPLING	31	12	13	5	1
ATKINSON	5	1	3	0	1
BACON	12	6	3	2	1
BAKER	1	0	1	0	0
BALDWIN	127	41	49	22	15
BANKS	25	0	10	12	3
BARROW	45	3	15	21	6
BARTOW	189	65	73	42	9
BEN HILL	15	5	8	1	1
BERRIEN	14	5	3	5	1
BIBB	369	104	137	104	24
BLECKLEY	24	4	8	9	3
BRANTLEY	27	5	11	9	2
BROOKS	9	4	2	3	0
BRYAN	7	2	4	1	0
BULLOCH	81	15	42	19	5
BURKE	56	16	21	11	8
BUTTS	18	1	6	9	2
CALHOUN	3	0	2	1	0
CAMDEN	31	11	6	10	4
CANDLER	53	6	11	31	5
CARROLL	111	33	53	20	5
CATOOSA	70	11	17	32	10
CHARLTON	9	4	4	1	0
CHATHAM	64	18	25	15	6
CHATTAHOOCHEE	5	0	1	2	2
CHATTOOGA	25	5	12	5	3
CHEROKEE	202	41	98	50	13
CLARKE	234	54	75	86	19
CLAY	12	3	5	2	2
CLAYTON	830	279	304	194	53
CLINCH	19	8	9	2	0
COBB	1,149	304	282	451	112
COFFEE	51	16	22	12	1
COLQUITT	11	9	2	0	0
COLUMBIA	67	17	25	17	8
COOK	9	5	0	4	0
COWETA	52	9	30	11	2
CRAWFORD	13	1	6	6	0
CRISP	28	8	6	9	5
DADE	0	0	0	0	0
DAWSON	5	0	0	3	2
DECATUR	4	0	2	0	2
DEKALB	2,254	680	848	571	155
DODGE	42	17	16	9	0
DOOLY	7	1	2	3	1
DOUGHERTY	1,035	304	405	260	66
DOUGLAS	234	80	77	65	12
EARLY	4	1	2	0	1
ECHOLS	2	0	1	1	0
EFFINGHAM	23	4	11	4	4

TEMPORARY ASSISTANCE to NEEDY FAMILIES

UNDUPLICATED CASES FY 2012

COUNTY	Number of Unduplicated Cases	Number who have been on TANF for:			
		1-3 Months	4-7 Months	8-11 Months	12 Months
ELBERT	188	53	67	58	10
EMANUEL	45	14	12	17	2
EVANS	86	21	43	15	7
FANNIN	10	5	2	3	0
FAYETTE	7	2	3	2	0
FLOYD	146	36	66	33	11
FORSYTH	41	12	24	3	2
FRANKLIN	18	0	5	10	3
FULTON	2,329	625	922	574	208
GILMER	4	1	0	2	1
GLASCOCK	4	0	1	3	0
GLYNN	44	11	15	12	6
GORDON	38	3	20	13	2
GRADY	27	5	11	6	5
GREENE	16	3	8	3	2
GWINNETT	805	273	340	155	37
HABERSHAM	2	0	0	1	1
HALL	495	161	206	94	34
HANCOCK	23	7	8	7	1
HARALSON	32	10	19	2	1
HARRIS	15	1	6	6	2
HART	64	18	15	27	4
HEARD	26	5	21	0	0
HENRY	17	0	7	5	5
HOUSTON	298	79	129	73	17
IRWIN	8	3	2	3	0
JACKSON	33	1	8	21	3
JASPER	9	0	4	4	1
JEFF DAVIS	35	15	12	5	3
JEFFERSON	37	9	17	9	2
JENKINS	38	14	11	10	3
JOHNSON	23	6	8	8	1
JONES	27	9	11	5	2
LAMAR	133	30	57	40	6
LANIER	5	2	2	1	0
LAURENS	102	30	44	23	5
LEE	7	2	3	2	0
LIBERTY	36	11	8	14	3
LINCOLN	7	5	2	0	0
LONG	16	4	6	5	1
LOWNDES	90	23	32	25	10
LUMPKIN	3	0	1	2	0
MACON	95	2	39	41	13
MADISON	40	8	15	15	2
MARION	25	10	6	7	2
MCDUFFIE	43	16	17	8	2
MCINTOSH	10	2	5	2	1
MERIWETHER	162	48	98	13	3
MILLER	0	0	0	0	0
MITCHELL	21	2	12	6	1
MONROE	17	6	6	5	0

TEMPORARY ASSISTANCE to NEEDY FAMILIES

UNDUPLICATED CASES FY 2012

COUNTY	Number of Unduplicated Cases	Number who have been on TANF for:			
		1-3 Months	4-7 Months	8-11 Months	12 Months
MONTGOMERY	23	8	9	6	0
MORGAN	12	0	4	8	0
MURRAY	15	2	6	4	3
MUSCOGEE	712	188	293	200	31
NEWTON	181	53	74	39	15
OCONEE	3	0	3	0	0
OGLETHORPE	57	35	14	7	1
PAULDING	90	23	41	18	8
PEACH	52	13	17	12	10
PICKENS	219	56	94	55	14
PIERCE	14	4	8	1	1
PIKE	15	2	5	3	5
POLK	77	24	29	19	5
PULASKI	20	2	8	8	2
PUTNAM	49	15	20	9	5
QUITMAN	2	0	0	2	0
RABUN	0	0	0	0	0
RANDOLPH	32	10	13	7	2
RICHMOND	505	136	197	133	39
ROCKDALE	138	11	68	47	12
SCHLEY	5	0	4	1	0
SCREVEN	51	17	15	14	5
SEMINOLE	3	0	1	0	2
SPALDING	177	39	91	30	17
STEPHENS	87	14	36	29	8
STEWART	15	1	3	4	7
SUMTER	46	11	14	13	8
TALBOT	12	3	5	4	0
TALIAFERRO	0	0	0	0	0
TATTNALL	56	12	19	20	5
TAYLOR	19	3	5	6	5
TELFAIR	19	5	11	3	0
TERRELL	10	2	4	2	2
THOMAS	4	0	1	3	0
TIFT	43	8	17	11	7
TOOMBS	53	13	24	11	5
TOWNS	0	0	0	0	0
TREUTLEN	17	0	4	10	3
TROUP	12	2	3	6	1
TURNER	1	0	0	1	0
TWIGGS	17	4	6	4	3
UNION	4	0	0	4	0
UPSON	12	3	7	1	1
WALKER	20	6	5	6	3
WALTON	208	46	81	67	14
WARE	38	10	14	12	2
WARREN	13	4	7	1	1
WASHINGTON	39	10	16	12	1
WAYNE	55	16	25	11	3
WEBSTER	2	0	2	0	0
WHEELER	14	6	4	3	1

TEMPORARY ASSISTANCE to NEEDY FAMILIES

UNDUPLICATED CASES FY 2012

COUNTY	Number of Unduplicated Cases	<i>Number who have been on TANF for:</i>			
		1-3 Months	4-7 Months	8-11 Months	12 Months
WHITE	3	0	1	2	0
WHITFIELD	10	3	4	3	0
WILCOX	20	6	7	6	1
WILKES	26	6	6	9	5
WILKINSON	23	6	7	7	3
WORTH	3	1	1	1	0
STATE TOTAL	16,868	4,660	6,497	4,445	1,266

SOURCE: State TANF File

**SUPPLEMENTAL NUTRITION
ASSISTANCE PROGRAM (SNAP)**
FORMERLY FOOD STAMP

SNAP

PROGRAM DESCRIPTION:

The Supplemental Nutrition Assistance Program (SNAP), also known as the Food Stamp Program, is a federally funded program that provides monthly benefits to low-income households to help pay for the cost of food.

DATA TABLE DESCRIPTION:

FOOD STAMPS SFY 2012

HOUSEHOLDS: Households whose gross income (total income including taxes) is no more than 130 percent of the federal poverty level may qualify for food stamp benefits.

RECIPIENTS: An individual who receives public assistance.

PROCEDURE:

The total number of households and recipients average for the SFY by category for each county. Total Benefit Dollars is the sum of monthly benefit amount. The State Total is the sum of each category.

FOOD STAMPS

STATE FISCAL YEAR 2012

County	MONTHLY AVERAGE HOUSEHOLDS	MONTHLY AVERAGE RECIPIENTS	TOTAL BENEFIT DOLLARS
APPLING	2,017	4,598	\$6,765,143.00
ATKINSON	911	2,192	\$3,118,644.00
BACON	1,049	2,478	\$3,609,276.00
BAKER	544	1,086	\$1,625,956.00
BALDWIN	4,759	9,949	\$15,501,781.00
BANKS	1,549	3,653	\$5,155,505.00
BARROW	5,697	12,900	\$20,095,450.00
BARTOW	9,378	21,589	\$34,455,249.52
BEN HILL	2,614	5,807	\$9,056,589.00
BERRIEN	2,119	4,969	\$7,213,429.00
BIBB	22,200	46,540	\$74,858,837.04
BLECKLEY	1,201	2,573	\$3,840,312.00
BRANTLEY	1,846	4,585	\$6,980,321.00
BROOKS	1,850	4,034	\$6,039,689.00
BRYAN	1,587	3,802	\$5,670,881.00
BULLOCH	5,565	12,059	\$18,907,486.00
BURKE	3,361	7,645	\$11,854,828.00
BUTTS	2,810	6,313	\$9,982,397.00
CALHOUN	772	1,525	\$2,315,917.00
CAMDEN	3,345	7,958	\$12,438,328.00
CANDLER	1,266	2,912	\$4,260,129.00
CARROLL	10,719	24,073	\$37,834,363.75
CATOOSA	4,605	11,136	\$16,450,017.00
CHARLTON	1,018	2,404	\$3,654,260.00
CHATHAM	22,422	47,910	\$77,802,135.00
CHATTAHOOCHEE	419	980	\$1,527,797.00
CHATTOOGA	3,052	6,679	\$9,995,539.00
CHEROKEE	6,410	14,566	\$22,956,655.00
CLARKE	10,554	20,683	\$34,422,931.00
CLAY	595	1,218	\$1,869,987.00
CLAYTON	36,040	82,438	\$140,908,541.00
CLINCH	829	1,980	\$2,915,078.00
COBB	38,014	85,400	\$140,413,946.44
COFFEE	4,906	11,658	\$17,505,747.00
COLQUITT	6,044	13,480	\$20,810,361.00
COLUMBIA	4,481	10,689	\$16,734,709.00
COOK	2,122	4,851	\$7,365,214.00
COWETA	7,823	18,215	\$29,169,179.58
CRAWFORD	1,393	2,962	\$4,493,708.00
CRISP	3,297	7,149	\$11,217,522.00
DADE	998	2,302	\$3,229,645.00
DAWSON	1,326	3,000	\$4,631,079.00
DECATUR	4,048	9,171	\$13,986,342.20
DEKALB	72,808	152,087	\$255,769,597.00
DODGE	2,534	5,322	\$7,985,790.00
DOOLY	1,436	3,107	\$4,786,844.00
DOUGHERTY	16,308	34,538	\$56,405,958.61
DOUGLAS	9,517	21,853	\$35,398,748.00
EARLY	1,850	4,061	\$6,088,754.00
ECHOLS	168	419	\$646,986.00

FOOD STAMPS

STATE FISCAL YEAR 2012

County	MONTHLY AVERAGE HOUSEHOLDS	MONTHLY AVERAGE RECIPIENTS	TOTAL BENEFIT DOLLARS
EFFINGHAM	2,619	6,477	\$9,692,052.00
ELBERT	2,487	5,111	\$7,806,568.00
EMANUEL	2,852	6,705	\$9,698,365.84
EVANS	1,281	2,884	\$4,455,380.00
FANNIN	1,905	4,349	\$6,241,422.00
FAYETTE	2,874	6,592	\$10,663,493.00
FLOYD	9,529	20,706	\$32,116,990.00
FORSYTH	3,521	8,303	\$13,181,331.00
FRANKLIN	2,324	5,258	\$7,836,853.00
FULTON	99,433	192,173	\$330,411,666.44
GILMER	2,198	5,390	\$8,015,995.00
GLASCOCK	277	663	\$975,932.00
GLYNN	7,363	16,193	\$26,058,945.00
GORDON	4,718	11,056	\$16,743,275.00
GRADY	2,779	6,214	\$9,214,538.00
GREENE	1,948	4,170	\$6,477,608.00
GWINNETT	43,139	105,363	\$173,077,530.00
HABERSHAM	2,987	6,848	\$10,202,295.00
HALL	12,904	30,477	\$48,806,313.00
HANCOCK	1,353	2,680	\$4,127,442.00
HARALSON	3,064	6,881	\$10,500,127.00
HARRIS	1,305	2,815	\$4,365,465.00
HART	2,477	5,316	\$8,016,080.00
HEARD	1,178	2,768	\$4,100,334.00
HENRY	12,773	27,896	\$45,084,326.00
HOUSTON	11,152	25,408	\$40,112,281.00
IRWIN	1,104	2,514	\$3,797,238.00
JACKSON	4,623	10,981	\$16,973,585.00
JASPER	1,621	3,790	\$5,971,411.00
JEFF DAVIS	1,787	4,212	\$6,234,088.00
JEFFERSON	2,321	5,155	\$7,631,589.00
JENKINS	1,178	2,617	\$3,858,581.00
JOHNSON	1,192	2,483	\$3,658,876.00
JONES	2,183	4,741	\$7,224,157.00
LAMAR	1,801	3,678	\$5,708,054.00
LANIER	1,021	2,451	\$3,792,145.00
LAURENS	6,510	13,858	\$21,566,243.00
LEE	1,620	3,841	\$5,880,702.00
LIBERTY	3,819	9,051	\$14,056,101.00
LINCOLN	683	1,505	\$2,195,012.00
LONG	1,254	3,182	\$4,796,647.00
LOWNDES	11,275	25,410	\$40,470,401.00
LUMPKIN	2,064	4,627	\$6,984,685.00
MACON	1,777	3,654	\$5,476,859.00
MADISON	3,109	7,151	\$10,867,454.00
MARION	952	1,978	\$3,068,675.00
MCDUFFIE	2,567	6,140	\$9,274,488.00
MCINTOSH	1,244	2,621	\$4,065,852.00
MERIWETHER	3,423	7,161	\$10,949,232.00
MILLER	776	1,652	\$2,476,830.00

FOOD STAMPS

STATE FISCAL YEAR 2012

County	MONTHLY AVERAGE HOUSEHOLDS	MONTHLY AVERAGE RECIPIENTS	TOTAL BENEFIT DOLLARS
MITCHELL	3,753	8,040	\$12,239,743.00
MONROE	1,980	4,021	\$6,011,926.00
MONTGOMERY	982	2,104	\$3,104,901.00
MORGAN	1,768	3,822	\$5,895,787.00
MURRAY	4,193	10,301	\$15,165,596.00
MUSCOGEE	22,207	47,006	\$76,684,698.00
NEWTON	10,526	24,471	\$39,766,245.00
OCONEE	1,081	2,485	\$3,852,803.00
OGLETHORPE	547	1,192	\$1,801,796.00
PAULDING	7,497	18,716	\$29,215,036.00
PEACH	3,455	6,636	\$10,873,173.00
PICKENS	2,299	5,428	\$8,171,657.00
PIERCE	1,775	4,057	\$5,921,169.00
PIKE	1,524	3,397	\$5,183,090.00
POLK	4,784	10,495	\$16,528,407.00
PULASKI	1,036	2,162	\$3,201,341.00
PUTNAM	2,143	4,667	\$7,090,982.00
QUITMAN	317	675	\$981,695.00
RABUN	1,157	2,525	\$3,665,603.00
RANDOLPH	964	2,022	\$2,994,333.00
RICHMOND	26,469	57,576	\$93,863,385.24
ROCKDALE	8,550	19,523	\$32,455,048.00
SCHLEY	417	919	\$1,257,966.00
SCREVEN	1,739	3,924	\$6,079,698.00
SEMINOLE	1,276	2,686	\$4,168,685.00
SPALDING	7,969	17,410	\$27,914,675.00
STEPHENS	3,535	7,241	\$11,050,351.00
STEWART	758	1,401	\$2,174,848.00
SUMTER	4,923	10,330	\$16,425,105.00
TALBOT	830	1,532	\$2,293,107.00
TALIAFERRO	327	630	\$947,856.00
TATTNALL	2,087	4,725	\$7,035,127.00
TAYLOR	1,074	2,158	\$3,256,091.00
TELFAIR	1,591	3,264	\$4,971,045.01
TERRELL	1,680	3,445	\$5,357,777.00
THOMAS	5,354	11,536	\$17,419,256.00
TIFT	5,149	11,441	\$17,648,670.00
TOOMBS	3,734	8,601	\$13,072,654.00
TOWNS	629	1,422	\$2,127,224.00
TREUTLEN	1,006	2,132	\$3,117,880.00
TROUP	6,421	14,150	\$21,946,351.00
TURNER	1,339	2,887	\$4,396,757.00
TWIGGS	1,097	2,179	\$3,287,626.00
UNION	1,385	3,197	\$4,688,897.00
UPSON	3,734	7,741	\$12,209,901.00
WALKER	5,834	13,779	\$20,344,450.00
WALTON	6,650	15,163	\$23,715,346.00
WARE	4,547	9,924	\$15,320,193.00
WARREN	985	1,906	\$2,881,899.00
WASHINGTON	2,606	5,675	\$8,554,633.00

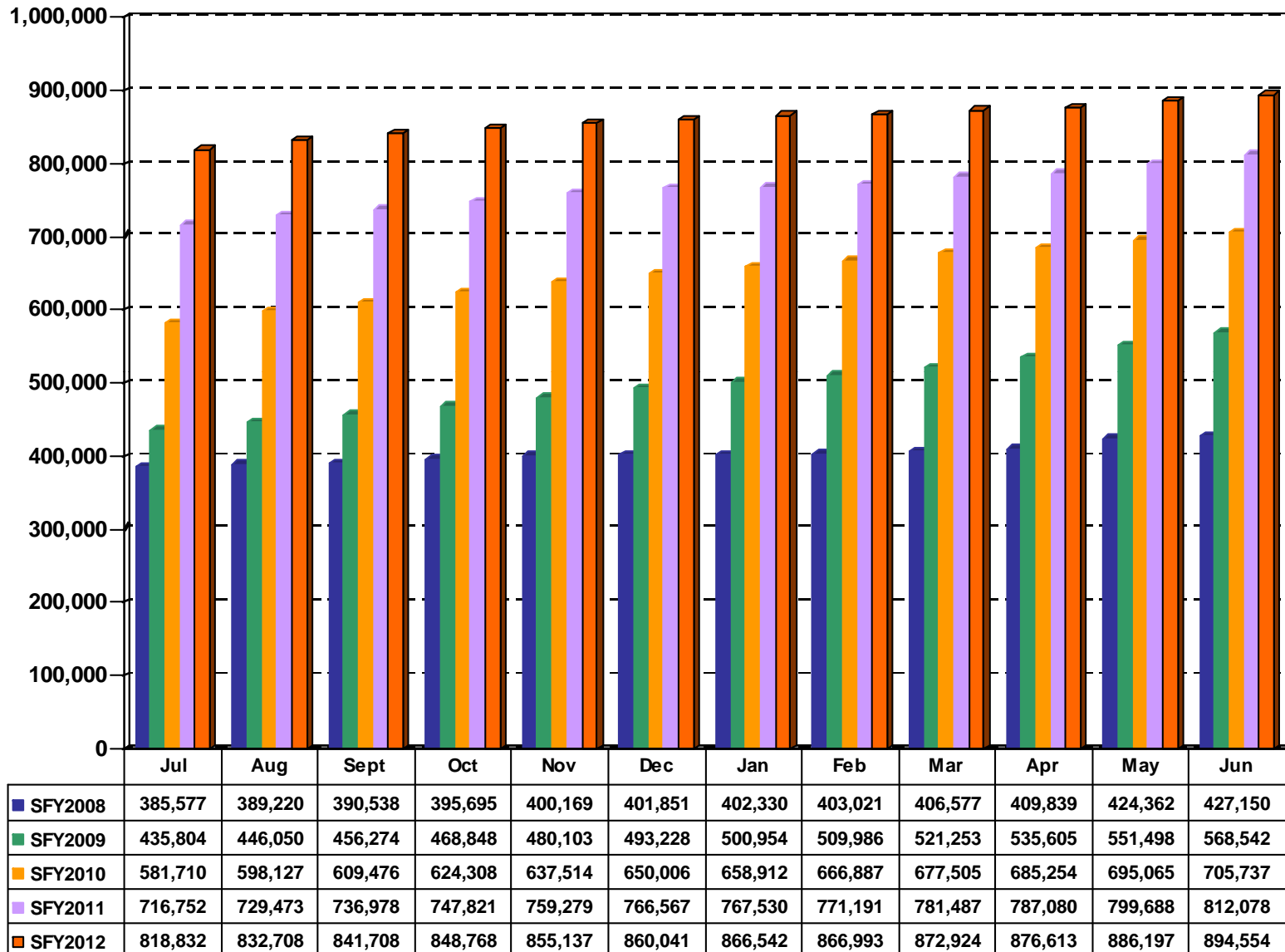
FOOD STAMPS

STATE FISCAL YEAR 2012

County	MONTHLY AVERAGE HOUSEHOLDS	MONTHLY AVERAGE RECIPIENTS	TOTAL BENEFIT DOLLARS
WAYNE	3,285	7,844	\$12,025,061.00
WEBSTER	301	600	\$881,229.00
WHEELER	730	1,603	\$2,379,617.00
WHITE	2,070	4,813	\$7,272,982.00
WHITFIELD	7,456	17,815	\$26,469,414.00
WILCOX	992	2,240	\$3,269,486.00
WILKES	1,309	2,722	\$4,089,246.00
WILKINSON	1,177	2,526	\$3,752,048.00
WORTH	2,571	5,482	\$8,471,200.00
STATE TOTAL	860,085	1,885,000	\$3,022,627,860

SOURCE: SUCCESS Food Stamp Participation Report, DMD6929I

Georgia's Food Stamp Households



Source: SUCCESS Food Stamp Participation Report , DMD6929I

SNAP

PROGRAM DESCRIPTION:

The Supplemental Nutrition Assistance Program (SNAP), also known as the Food Stamp Program, is a federally funded program that provides monthly benefits to low-income households to help pay for the cost of food.

DATA TABLE DESCRIPTION:

FOOD STAMP RECIPIENTS BY RACE AND ETHNICITY JUNE 2012

RECIPIENTS: An individual who receives public assistance.

PROCEDURE:

The number of recipients in the reporting month of June is group by ethnicity and by race for each county. The State Total is the sum of each category.

FOOD STAMP RECIPIENTS BY RACE AND ETHNICITY

JUNE 2012

COUNTY	LATINO					NON-LATINO				
	WHITE	BLACK	PACIFIC ISLANDER/ ALASKAN	ASIAN	NATIVE AMERICAN	WHITE	BLACK	PACIFIC ISLANDER/ ALASKAN	ASIAN	NATIVE AMERICAN
APPLING	356	2	0	5	0	2,844	1,508	2	7	0
ATKINSON	386	1	1	1	2	1,312	621	0	0	7
BACON	95	2	0	0	1	1,621	887	2	6	1
BAKER	9	0	0	0	0	270	434	1	0	0
BALDWIN	83	4	0	0	2	3,191	7,153	6	52	6
BANKS	90	0	0	0	0	2,254	78	2	21	1
BARROW	1,733	27	23	4	3	10,645	7,823	12	367	27
BARTOW	1,425	16	5	7	11	16,912	3,819	37	76	37
BEN HILL	147	3	1	0	1	2,581	3,287	6	9	12
BERRIEN	187	0	0	1	0	3,861	928	7	8	5
BIBB	476	30	5	5	10	7,377	39,351	23	121	33
BLECKLEY	26	2	0	0	0	1,254	1,335	2	13	0
BRANTLEY	28	0	0	0	0	4,445	181	2	2	9
BROOKS	90	0	1	1	0	1,500	2,570	3	1	3
BRYAN	69	5	1	3	0	2,494	1,259	12	27	3
BULLOCH	313	17	13	4	0	5,071	7,426	13	48	13
BURKE	49	5	0	0	0	2,002	5,592	4	10	2
BUTTS	102	2	3	2	1	4,128	4,070	7	31	6
CALHOUN	17	0	0	0	0	217	960	1	2	1
CAMDEN	223	15	2	7	7	4,692	3,284	7	84	17
CANDLER	310	2	0	0	1	1,415	1,249	2	11	0
CARROLL	107	3	3	0	0	2,706	1,533	0	10	3
CATOOSA	1,174	5	2	1	6	14,677	837	4	79	19
CHARLTON	10	0	0	0	0	1,487	965	2	5	2
CHATHAM	1,156	98	16	7	19	10,078	38,604	49	287	59
CHATTAHOOCHEE	25	2	0	0	0	504	419	1	0	3
CHATTOOGA	908	10	1	0	3	10,690	1,029	12	30	20
CHEROKEE	2,744	29	5	3	4	11,584	2,830	23	164	27
CLARKE	114	7	0	0	0	1,156	1,663	1	27	5
CLAY	0	0	0	0	0	114	929	1	3	0
CLAYTON	7,119	413	89	64	25	10,879	67,301	95	1,749	113
CLINCH	36	0	0	0	0	948	1,039	0	2	3
COBB	13,769	431	61	30	38	22,563	47,864	114	1,104	172
COFFEE	765	4	2	0	0	5,799	4,960	5	10	12
COLQUITT	1,229	13	6	5	2	6,116	10,701	13	26	8
COLUMBIA	438	32	7	3	6	6,958	3,440	26	93	18
COOK	151	3	0	0	0	2,338	2,260	2	11	3
COWETA	1,166	41	2	4	5	14,689	10,243	26	94	43
CRAWFORD	33	0	0	0	1	1,887	1,008	6	2	5
CRISP	67	2	0	0	1	1,693	5,021	0	25	2
DADE	20	0	1	0	0	852	40	0	4	2
DAWSON	22	0	0	0	0	810	32	2	0	2
DECATUR	322	10	3	2	2	2,902	5,851	4	16	6
DEKALB	10,350	484	73	59	51	8,819	130,698	185	6,805	215
DODGE	68	10	0	4	0	2,841	2,462	1	17	1
DOOLY	191	2	0	1	0	610	2,101	3	9	1
DOUGHERTY	1,165	34	6	1	17	8,728	33,305	24	73	31
DOUGLAS	1,852	92	7	2	9	9,729	14,925	28	151	47
EARLY	16	0	0	0	0	609	2,213	0	1	0
ECHOLS	379	0	0	0	0	499	62	1	0	3
EFFINGHAM	102	7	0	2	0	4,349	2,093	8	22	7
ELBERT	838	8	10	2	5	3,537	6,317	16	33	5
EMANUEL	132	5	1	0	0	3,001	3,711	1	11	1
EVANS	300	0	0	0	0	1,176	1,555	4	6	2
FANNIN	154	3	1	0	0	4,438	68	2	8	11
FAYETTE	604	11	8	2	2	4,033	4,303	12	132	30
FLOYD	1,743	10	1	6	1	13,218	5,992	20	117	13
FORSYTH	186	2	1	1	0	1,815	190	2	55	5

FOOD STAMP RECIPIENTS BY RACE AND ETHNICITY

JUNE 2012

COUNTY	LATINO					NON-LATINO				
	WHITE	BLACK	PACIFIC ISLANDER/ ALASKAN	ASIAN	NATIVE AMERICAN	WHITE	BLACK	PACIFIC ISLANDER/ ALASKAN	ASIAN	NATIVE AMERICAN
FRANKLIN	170	4	1	0	1	5,720	804	0	15	5
FULTON	9,570	549	136	67	55	12,045	170,770	173	2,936	328
GILMER	1,023	3	3	1	4	5,957	163	8	14	5
GLASCOCK	1	0	0	0	0	521	100	0	1	0
GLYNN	694	11	3	0	1	7,113	9,095	27	61	23
GORDON	82	1	0	0	0	773	72	2	3	0
GRADY	307	6	0	1	0	1,815	2,256	2	1	13
GREENE	215	10	0	0	0	2,475	5,020	11	17	7
GWINNETT	26,925	842	147	112	81	26,466	50,444	216	6,104	214
HABERSHAM	45	1	0	0	0	766	37	1	49	0
HALL	11,267	55	8	10	25	31,966	5,011	32	444	67
HANCOCK	1	0	0	0	0	231	2,515	0	2	1
HARALSON	22	2	1	0	1	6,327	570	11	3	9
HARRIS	26	0	0	0	1	1,678	999	2	4	2
HART	195	1	1	2	0	8,026	1,758	8	26	12
HEARD	70	7	0	0	0	1,757	1,560	6	13	2
HENRY	961	74	37	16	11	10,335	16,776	93	634	56
HOUSTON	1,129	42	5	8	8	10,426	14,758	22	237	27
IRWIN	46	1	0	0	0	1,290	1,171	2	3	0
JACKSON	898	22	6	11	2	16,846	6,399	20	224	30
JASPER	195	2	0	0	0	3,760	3,678	8	23	1
JEFF DAVIS	263	2	0	0	0	2,904	1,114	6	3	2
JEFFERSON	38	2	0	0	1	967	4,261	2	2	3
JENKINS	37	4	0	1	0	912	1,766	0	2	0
JOHNSON	11	0	0	1	0	1,176	1,362	1	2	1
JONES	16	4	0	0	0	3,050	1,782	8	16	7
LAMAR	89	3	0	0	0	2,744	2,485	4	17	6
LANIER	56	0	0	0	0	1,647	944	4	0	2
LAURENS	152	4	0	1	1	5,518	8,545	6	37	3
LEE	24	1	0	0	0	1,468	781	0	26	3
LIBERTY	440	97	8	3	0	2,557	6,105	46	85	14
LINCOLN	0	0	0	0	0	607	936	3	0	3
LONG	368	18	2	0	0	1,594	1,240	11	17	4
LOWNDES	856	28	8	9	1	7,692	16,933	24	117	32
LUMPKIN	27	0	0	0	0	367	14	0	1	1
MACON	66	6	0	0	0	559	2,850	3	3	1
MADISON	1,021	18	37	1	7	7,828	5,760	7	78	18
MARION	89	2	1	0	0	793	1,016	3	7	1
MCDUFFIE	78	0	2	0	1	2,055	4,347	2	8	5
MCINTOSH	22	1	0	0	0	1,462	1,257	1	3	3
MERIWETHER	200	15	0	2	0	5,870	7,601	3	21	14
MILLER	10	2	0	0	0	528	714	0	0	1
MITCHELL	192	7	0	0	0	1,943	4,936	5	10	1
MONROE	35	0	1	3	2	2,199	1,869	8	8	6
MONTGOMERY	80	0	1	0	0	1,271	796	3	1	0
MORGAN	198	17	0	2	3	3,378	4,434	8	15	2
MURRAY	4,501	7	7	0	6	12,079	319	5	16	6
MUSCOGEE	1,234	118	15	6	11	11,537	37,520	107	256	60
NEWTON	298	23	3	1	5	4,265	6,106	8	47	14
OCONEE	202	8	2	0	0	3,068	2,085	8	37	5
OGLETHORPE	5	0	0	0	0	107	257	0	0	0
PAULDING	693	56	4	2	3	12,660	5,568	29	121	37
PEACH	274	22	0	0	0	1,875	4,865	4	33	5
PICKENS	629	1	1	0	5	7,013	262	5	12	12
PIERCE	136	3	0	0	1	3,307	651	9	3	7
PIKE	150	1	0	1	0	4,931	3,622	7	23	8
POLK	964	10	1	0	1	7,645	2,160	3	12	10
PULASKI	39	2	0	1	1	967	1,209	5	8	1

FOOD STAMP RECIPIENTS BY RACE AND ETHNICITY

JUNE 2012

COUNTY	LATINO					NON-LATINO				
	WHITE	BLACK	PACIFIC ISLANDER/ ALASKAN	ASIAN	NATIVE AMERICAN	WHITE	BLACK	PACIFIC ISLANDER/ ALASKAN	ASIAN	NATIVE AMERICAN
PUTNAM	254	1	0	1	0	2,109	2,333	2	31	3
QUITMAN	1	0	0	1	0	177	415	1	0	0
RABUN	36	0	0	0	0	641	35	1	2	0
RANDOLPH	2	1	0	0	0	249	1,684	0	2	0
RICHMOND	710	115	16	10	9	12,166	45,871	90	222	45
ROCKDALE	1,400	58	29	3	9	5,068	12,215	24	146	30
SCHLEY	13	1	0	0	0	425	436	0	0	0
SCREVEN	12	0	0	0	0	1,339	2,605	4	11	2
SEMINOLE	29	8	0	0	0	998	1,428	3	2	0
SPALDING	48	7	0	0	0	1,613	1,849	4	2	3
STEPHENS	1,502	15	1	8	1	12,765	1,810	10	148	20
STEWART	4	0	0	0	0	235	1,223	1	1	0
SUMTER	271	10	1	1	0	1,961	8,533	8	20	2
TALBOT	4	0	0	0	0	309	1,330	0	0	9
TALIAFERRO	4	1	0	0	1	122	418	0	0	0
TATTNALL	505	6	0	0	0	2,701	1,789	5	11	0
TAYLOR	19	0	0	5	0	694	1,135	1	4	1
TELFAIR	35	1	0	0	1	1,477	1,892	1	1	1
TERRELL	7	0	0	0	0	242	1,204	0	1	1
THOMAS	230	36	0	0	2	4,196	7,727	2	8	21
TIFT	1,267	4	2	3	2	4,106	6,386	9	29	7
TOOMBS	992	5	1	0	1	3,836	3,774	3	13	2
TOWNS	7	0	0	0	0	149	1	0	1	0
TREUTLEN	14	0	0	0	0	1,159	1,148	4	0	2
TROUP	329	8	0	2	1	8,976	8,826	22	34	14
TURNER	60	1	0	0	0	775	1,916	0	3	2
TWIGGS	5	2	0	0	1	974	1,212	8	3	6
UNION	9	0	0	0	0	611	14	0	1	3
UPSON	316	9	2	2	0	8,769	6,343	14	43	15
WALKER	1,039	8	1	0	0	17,902	1,070	7	65	14
WALTON	41	3	0	0	0	1,030	1,000	0	11	1
WARE	193	8	1	0	0	5,290	4,680	8	24	11
WARREN	3	0	0	0	0	272	1,488	1	6	0
WASHINGTON	29	5	0	0	0	1,278	4,505	4	12	1
WAYNE	305	5	0	1	2	4,955	2,618	11	8	8
WEBSTER	17	0	0	0	0	144	376	2	0	1
WHEELER	53	5	1	1	0	917	638	1	0	1
WHITE	4	0	0	0	0	298	16	0	0	0
WHITFIELD	314	2	0	0	0	1,355	123	0	8	1
WILCOX	11	1	0	0	0	1,078	1,147	1	1	4
WILKES	52	1	4	0	0	753	1,859	3	8	3
WILKINSON	21	0	0	0	2	1,126	1,445	2	2	1
WORTH	73	4	0	0	0	1,888	2,586	2	5	3
STATE TOTAL	133,244	4,350	861	539	507	682,882	1,103,910	2,095	24,827	2,420

SOURCE: June 2012 Food Stamp File

SNAP

PROGRAM DESCRIPTION:

The Supplemental Nutrition Assistance Program (SNAP), also known as the Food Stamp Program, is a federally funded program that provides monthly benefits to low-income households to help pay for the cost of food.

DATA TABLE DESCRIPTION:

FOOD STAMP RECIPIENTS BY AGE JUNE 2012

RECIPIENTS: An individual who receives public assistance.

PROCEDURE:

The number of recipients in the reporting month of June is group by age for each county. The State Total is the sum of each age group.

FOOD STAMP RECIPIENTS BY AGE

JUNE 2012

COUNTY	AGE 0-6	AGE 7-15	AGE 16-17	AGE 18-21	AGE 22-34	AGE 35-44	AGE 45-64	AGE 65+
APPLING	1,055	959	158	285	791	467	733	276
ATKINSON	499	528	83	135	366	174	399	147
BACON	553	518	113	140	448	258	422	163
BAKER	107	107	13	41	128	61	157	100
BALDWIN	2,150	2,133	330	712	2,178	1,012	1,636	346
BANKS	298	467	76	114	379	268	492	352
BARROW	4,148	4,103	678	1,325	3,972	2,280	3,310	848
BARTOW	4,307	4,632	806	1,416	4,097	2,473	3,665	949
BEN HILL	1,288	1,218	199	363	1,154	547	971	307
BERRIEN	875	998	191	323	917	549	888	256
BIBB	9,827	9,673	1,717	3,209	9,060	4,619	7,519	1,807
BLECKLEY	508	500	97	209	500	242	440	136
BRANTLEY	830	952	159	277	904	545	787	213
BROOKS	798	776	153	276	724	421	742	279
BRYAN	760	881	131	238	710	399	556	198
BULLOCH	2,721	2,419	425	1,193	2,734	1,129	1,802	495
BURKE	1,503	1,679	290	500	1,463	687	1,180	362
BUTTS	1,647	1,745	293	589	1,725	895	1,273	185
CALHOUN	197	207	45	87	202	117	204	139
CAMDEN	1,732	1,791	295	523	1,734	840	1,138	285
CANDLER	647	638	102	158	468	306	479	192
CARROLL	693	736	153	277	598	386	932	590
CATOOSA	3,169	3,230	575	976	3,138	1,940	2,638	1,138
CHARLTON	491	490	76	164	415	276	409	150
CHATHAM	11,252	10,583	1,666	3,283	9,752	4,385	7,448	2,004
CHATTAHOOCHEE	193	191	32	63	190	91	163	31
CHATTOOGA	2,580	2,512	412	774	2,378	1,365	2,042	640
CHEROKEE	3,986	3,705	615	900	2,820	1,886	2,612	889
CLARKE	600	430	71	154	467	241	596	414
CLAY	186	197	36	73	172	89	195	99
CLAYTON	20,287	20,772	3,446	6,129	17,471	8,781	9,718	1,243
CLINCH	423	422	73	105	378	172	346	109
COBB	19,956	19,926	3,300	5,047	15,339	8,712	10,875	2,991
COFFEE	2,431	2,374	443	781	2,105	1,077	1,783	563
COLQUITT	3,466	4,063	701	1,034	3,299	1,866	2,867	823
COLUMBIA	2,294	2,496	442	545	2,202	1,203	1,483	356
COOK	946	951	184	286	913	463	769	256
COWETA	5,458	5,714	1,005	1,646	5,048	2,895	3,805	742
CRAWFORD	491	561	97	184	560	325	557	167
CRISP	1,396	1,368	270	472	1,248	667	1,059	331
DADE	75	52	5	19	79	53	294	342
DAWSON	161	117	17	65	199	104	168	37
DECATUR	1,849	1,891	362	611	1,695	853	1,366	491
DEKALB	34,333	32,580	5,719	9,985	29,987	16,038	22,628	6,469
DODGE	1,044	980	192	384	980	531	950	343
DOOLY	551	631	117	160	478	276	508	197
DOUGHERTY	9,556	8,632	1,515	3,245	8,975	3,909	5,954	1,598
DOUGLAS	5,701	6,107	1,085	1,653	4,907	3,044	3,518	827
EARLY	508	571	122	187	532	233	441	245
ECHOLS	299	207	39	58	123	79	104	35
EFFINGHAM	1,285	1,520	245	380	1,183	704	1,006	267
ELBERT	2,233	2,162	378	710	2,044	1,023	1,736	485

FOOD STAMP RECIPIENTS BY AGE

JUNE 2012

COUNTY	AGE 0-6	AGE 7-15	AGE 16-17	AGE 18-21	AGE 22-34	AGE 35-44	AGE 45-64	AGE 65+
EMANUEL	1,450	1,449	253	408	1,233	623	1,037	410
EVANS	704	681	88	187	522	258	418	185
FANNIN	723	875	157	245	818	576	948	343
FAYETTE	1,712	2,068	402	561	1,592	1,065	1,370	367
FLOYD	4,387	4,240	645	1,328	3,753	2,222	3,557	989
FORSYTH	352	428	70	129	396	318	456	108
FRANKLIN	1,118	1,134	223	338	1,145	742	1,340	680
FULTON	38,369	38,690	6,480	12,998	37,961	19,991	33,531	8,609
GILMER	1,458	1,494	266	392	1,208	798	1,197	368
GLASCOCK	107	135	20	26	120	66	117	32
GLYNN	3,706	3,460	569	1,073	3,357	1,614	2,597	652
GORDON	220	191	23	84	159	96	137	23
GRADY	915	841	165	249	775	363	775	318
GREENE	1,471	1,688	306	478	1,408	884	1,216	304
GWINNETT	28,035	28,877	4,461	5,774	16,228	11,071	12,147	4,958
HABERSHAM	48	60	10	16	68	72	209	416
HALL	11,997	12,024	1,748	2,426	7,443	4,775	6,921	1,551
HANCOCK	475	477	113	187	467	272	579	180
HARALSON	1,219	1,264	225	406	1,316	761	1,333	422
HARRIS	528	511	81	137	492	270	489	204
HART	1,708	1,922	350	610	1,826	1,139	1,817	657
HEARD	852	706	124	204	601	292	393	243
HENRY	4,802	6,048	1,139	1,718	4,983	3,245	4,803	2,255
HOUSTON	5,809	5,789	971	1,670	5,429	2,666	3,423	905
IRWIN	484	528	84	159	437	269	387	165
JACKSON	4,468	5,070	928	1,488	4,514	2,857	4,163	970
JASPER	1,380	1,659	308	485	1,364	891	1,272	308
JEFF DAVIS	970	933	144	257	755	386	611	238
JEFFERSON	1,029	1,079	198	361	973	483	846	307
JENKINS	486	565	102	181	468	256	506	158
JOHNSON	427	498	95	166	465	261	488	154
JONES	851	1,008	187	315	943	522	811	246
LAMAR	1,123	994	173	367	1,030	527	832	302
LANIER	520	533	102	170	490	292	416	130
LAURENS	2,757	2,835	510	1,014	2,845	1,438	2,196	672
LEE	439	529	84	160	514	251	259	67
LIBERTY	2,137	2,075	349	594	1,920	855	1,129	296
LINCOLN	289	273	55	77	287	166	285	117
LONG	743	763	137	166	620	311	403	111
LOWNDES	5,639	5,218	855	1,963	5,314	2,387	3,428	896
LUMPKIN	58	68	7	25	71	53	91	37
MACON	600	678	118	254	673	319	635	211
MADISON	3,036	2,970	525	1,027	2,922	1,517	2,245	533
MARION	389	361	48	116	333	164	371	130
MCDUFFIE	1,398	1,374	203	420	1,221	579	1,022	281
MCINTOSH	509	485	96	162	521	317	505	154
MERIWETHER	2,627	2,546	450	910	2,550	1,378	2,499	766
MILLER	245	247	48	72	260	125	214	44
MITCHELL	1,482	1,387	232	478	1,293	642	1,122	458
MONROE	721	793	148	260	695	450	809	255
MONTGOMERY	362	420	80	127	376	200	426	161
MORGAN	1,461	1,744	310	562	1,409	918	1,325	328

FOOD STAMP RECIPIENTS BY AGE

JUNE 2012

COUNTY	AGE 0-6	AGE 7-15	AGE 16-17	AGE 18-21	AGE 22-34	AGE 35-44	AGE 45-64	AGE 65+
MURRAY	3,848	3,980	615	957	2,800	1,697	2,325	724
MUSCOGEE	11,052	10,006	1,742	3,624	10,003	4,751	7,734	1,952
NEWTON	2,333	2,471	462	716	1,784	1,183	1,230	591
OCONEE	760	1,056	193	327	999	691	1,162	227
OGLETHORPE	104	43	12	33	52	19	51	55
PAULDING	3,581	4,374	790	1,157	3,442	2,361	2,746	722
PEACH	1,288	1,310	206	571	1,545	634	1,193	331
PICKENS	1,502	1,731	291	433	1,326	848	1,448	361
PIERCE	780	816	143	237	744	409	745	243
PIKE	1,602	1,757	279	562	1,652	908	1,517	466
POLK	2,250	2,183	303	620	1,965	1,088	1,813	584
PULASKI	449	422	65	138	398	179	412	170
PUTNAM	1,039	911	142	259	897	433	845	208
QUITMAN	89	110	22	37	107	59	118	53
RABUN	22	40	10	16	42	33	209	343
RANDOLPH	381	350	56	106	366	153	349	177
RICHMOND	12,669	12,367	2,011	3,950	11,989	5,524	8,709	2,035
ROCKDALE	3,879	4,216	710	1,307	3,463	2,139	2,582	686
SCHLEY	162	188	31	57	122	82	134	99
SCREVEN	804	733	128	252	747	343	702	264
SEMINOLE	404	433	97	170	442	230	465	227
SPALDING	438	501	103	174	345	257	991	717
STEPHENS	3,084	3,049	476	931	2,791	1,714	2,941	1,294
STEWART	234	222	50	91	248	143	336	140
SUMTER	2,140	2,227	401	757	2,090	1,013	1,634	545
TALBOT	270	260	49	118	254	153	407	141
TALIAFERRO	80	87	22	30	97	54	126	50
TATNALL	1,079	1,049	162	300	844	445	785	353
TAYLOR	300	297	79	141	303	174	415	150
TELFAIR	643	628	106	210	603	328	650	241
TERRELL	267	281	41	120	336	146	201	63
THOMAS	2,382	2,505	420	753	2,307	1,204	2,079	572
TIFT	2,539	2,435	443	766	2,175	1,127	1,734	596
TOOMBS	1,941	1,888	291	519	1,483	767	1,250	488
TOWNS	31	30	4	6	42	19	24	2
TREUTLEN	439	437	71	132	448	235	414	151
TROUP	3,814	3,855	737	1,246	3,576	1,885	2,625	474
TURNER	513	584	102	184	537	275	457	105
TWIGGS	365	333	79	135	413	229	500	157
UNION	101	109	16	56	129	81	118	28
UPSON	2,843	2,928	508	1,097	3,088	1,682	2,670	697
WALKER	3,946	4,261	733	1,157	3,869	2,310	3,132	698
WALTON	264	390	79	110	210	179	496	358
WARE	2,072	1,990	350	706	1,961	981	1,666	489
WARREN	330	298	56	126	319	169	357	115
WASHINGTON	1,103	1,046	197	416	1,107	533	1,082	350
WAYNE	1,691	1,552	287	483	1,555	736	1,282	327
WEBSTER	81	112	17	29	95	40	101	65
WHEELER	315	342	63	85	257	169	264	122
WHITE	54	36	6	28	47	44	77	26
WHITFIELD	228	250	29	84	204	151	403	454
WILCOX	390	452	81	165	393	234	363	165

FOOD STAMP RECIPIENTS BY AGE

JUNE 2012

COUNTY	AGE 0-6	AGE 7-15	AGE 16-17	AGE 18-21	AGE 22-34	AGE 35-44	AGE 45-64	AGE 65+
WILKES	485	524	95	146	460	246	512	215
WILKINSON	526	524	105	176	491	254	417	106
WORTH	857	838	166	300	865	443	682	410
STATE TOTAL	407,981	411,597	69,944	123,749	361,719	197,133	295,549	87,963

SOURCE: June 2012 Food Stamp File

MEDICAID

ARM MEDICAID

PROGRAM DESCRIPTION:

AFDC-Related Medicaid (ARM) is a federally funded medically assistance program for low income individuals and families. Eligibility is determined by applying TANF policies.

DATA TABLE DESCRIPTION:

ARM MEDICAID – Monthly Average Cases SFY 2012

RSM: Right from the Start Medicaid is coverage available for children born on or after October 1, 1983 and pregnant women.

LIM: Low Income Medicaid provides Medicaid benefits for children up to age 18 and adults who are not receiving SSI.

OTHER ARM: The Other ARM Medicaid category includes the following Medicaid programs: Foster Care, Transitional Medicaid Assistance (TMA), 4 Month Extended (Child Support Increase), Adoption Assistance, Newborn (if mother Medicaid eligible), Standard Filing Unit (SFU), Stepchild and Medically Needy (for a pregnant woman or a child whose income exceeds RSM levels).

PROCEDURE:

The total number of cases average for the SFY by category for each county. Total ARM is the sum of RSM cases, plus LIM cases and Other ARM Medicaid. The State Total is the sum of each category.

ARM MEDICAID
STATE FISCAL YEAR 2012
MONTHLY AVERAGE CASES

COUNTY	RSM	LIM	OTHER ARM MEDICAID	TOTAL ARM
APPLING	934	260	215	1,409
ATKINSON	435	77	85	596
BACON	449	145	110	703
BAKER	94	53	25	172
BALDWIN	1,391	709	392	2,492
BANKS	656	171	156	983
BARROW	3,051	836	696	4,583
BARTOW	3,601	1,437	908	5,946
BEN HILL	976	389	264	1,629
BERRIEN	871	271	173	1,315
BIBB	5,265	3,443	1,918	10,626
BLECKLEY	451	169	103	723
BRANTLEY	797	256	174	1,226
BROOKS	594	199	132	925
BRYAN	781	151	160	1,092
BULLOCH	2,267	617	558	3,442
BURKE	1,134	481	272	1,887
BUTTS	1,304	493	304	2,101
CALHOUN	180	67	41	288
CAMDEN	1,328	404	324	2,056
CANDLER	186	51	30	267
CARROLL	634	247	141	1,022
CATOOSA	2,809	788	644	4,242
CHARLTON	432	115	100	647
CHATHAM	7,914	2,191	2,013	12,118
CHATTAHOOCHEE	147	60	37	244
CHATTOOGA	1,763	571	432	2,766
CHEROKEE	2,032	356	507	2,896
CLARKE	1,291	409	314	2,014
CLAY	111	51	28	190
CLAYTON	13,641	5,286	4,037	22,964
CLINCH	441	138	129	707
COBB	20,023	4,296	5,261	29,580
COFFEE	2,213	645	506	3,364
COLQUITT	605	174	201	980
COLUMBIA	2,344	443	527	3,314
COOK	820	287	186	1,292
COWETA	4,228	1,658	1,049	6,935
CRAWFORD	457	194	117	768
CRISP	863	372	285	1,520
DADE	32	8	6	46
DAWSON	171	30	36	237
DECATUR	1,048	369	254	1,671
DEKALB	23,720	8,036	6,129	37,885
DODGE	845	316	186	1,347
DOOLY	439	136	93	667
DOUGHERTY	8,884	4,021	1,917	14,822
DOUGLAS	2,504	846	605	3,954
EARLY	546	233	137	916
ECHOLS	119	14	28	160
EFFINGHAM	1,349	303	298	1,949
ELBERT	1,939	575	414	2,928

ARM MEDICAID

STATE FISCAL YEAR 2012
MONTHLY AVERAGE CASES

COUNTY	RSM	LIM	OTHER ARM MEDICAID	TOTAL ARM
EMANUEL	1,667	401	349	2,416
EVANS	574	181	122	877
FANNIN	863	211	180	1,253
FAYETTE	1,228	345	298	1,871
FLOYD	3,492	1,161	801	5,454
FORSYTH	1,084	112	138	1,334
FRANKLIN	984	364	216	1,563
FULTON	32,050	11,555	28,659	72,263
GILMER	1,341	257	279	1,877
GLASCOCK	103	34	24	161
GLYNN	2,657	845	765	4,267
GORDON	1,449	368	339	2,156
GRADY	1,093	275	283	1,651
GREENE	1,086	330	227	1,643
GWINNETT	25,554	3,425	6,509	35,488
HABERSHAM	649	113	40	802
HALL	10,435	1,980	2,639	15,054
HANCOCK	348	139	91	578
HARALSON	1,067	403	269	1,739
HARRIS	424	133	133	690
HART	1,495	452	348	2,294
HEARD	532	175	158	866
HENRY	4,326	1,423	1,191	6,940
HOUSTON	4,285	1,464	1,243	6,992
IRWIN	430	157	80	667
JACKSON	3,807	1,085	840	5,732
JASPER	1,145	387	259	1,791
JEFF DAVIS	830	280	184	1,294
JEFFERSON	842	236	175	1,253
JENKINS	403	135	82	619
JOHNSON	374	171	68	613
JONES	786	275	201	1,262
LAMAR	633	229	181	1,043
LANIER	402	126	77	606
LAURENS	2,132	938	534	3,604
LEE	414	90	107	611
LIBERTY	1,622	552	418	2,592
LINCOLN	272	76	51	398
LONG	595	147	151	893
LOWNDES	4,310	1,282	1,173	6,765
LUMPKIN	324	62	38	424
MACON	723	375	202	1,301
MADISON	2,085	728	526	3,339
MARION	401	177	85	662
MCDUFFIE	1,016	350	243	1,609
MCINTOSH	394	119	91	603
MERIWETHER	1,795	752	493	3,039
MILLER	109	57	29	195
MITCHELL	960	334	304	1,598
MONROE	723	163	165	1,051
MONTGOMERY	370	116	63	549
MORGAN	1,187	345	257	1,790

ARM MEDICAID
STATE FISCAL YEAR 2012
MONTHLY AVERAGE CASES

COUNTY	RSM	LIM	OTHER ARM MEDICAID	TOTAL ARM
MURRAY	3,128	618	648	4,394
MUSCOGEE	6,661	2,768	1,767	11,196
NEWTON	2,688	932	577	4,196
OCONEE	658	133	118	909
OGLETHORPE	18	11	5	34
PAULDING	3,306	860	691	4,856
PEACH	941	476	263	1,680
PICKENS	1,560	433	271	2,264
PIERCE	753	219	167	1,139
PIKE	1,116	391	214	1,721
POLK	1,665	568	378	2,611
PULASKI	328	141	80	548
PUTNAM	872	238	196	1,307
QUITMAN	61	18	13	92
RABUN	251	40	24	315
RANDOLPH	535	237	145	917
RICHMOND	8,184	3,470	2,144	13,798
ROCKDALE	3,096	1,080	766	4,942
SCHLEY	131	52	39	222
SCREVEN	597	222	150	969
SEMINOLE	212	101	58	371
SPALDING	873	402	178	1,453
STEPHENS	2,009	649	569	3,227
STEWART	278	91	65	434
SUMTER	1,161	589	367	2,118
TALBOT	262	85	62	409
TALIAFERRO	65	26	17	108
TATTNALL	868	273	195	1,336
TAYLOR	231	125	60	415
TELFAIR	542	206	120	868
TERRELL	280	185	80	545
THOMAS	1,251	410	356	2,017
TIFT	2,073	561	482	3,116
TOOMBS	1,528	492	339	2,359
TOWNS	95	23	10	128
TREUTLEN	314	128	73	516
TROUP	3,194	1,072	920	5,186
TURNER	431	153	93	677
TWIGGS	302	135	74	511
UNION	330	62	38	430
UPSON	1,970	911	505	3,387
WALKER	3,417	1,139	778	5,333
WALTON	538	134	109	780
WARE	1,600	534	410	2,543
WARREN	248	102	62	412
WASHINGTON	925	252	204	1,381
WAYNE	1,391	511	317	2,219
WEBSTER	107	29	25	160
WHEELER	260	114	44	418
WHITE	231	53	16	300
WHITFIELD	536	88	122	746
WILCOX	327	175	77	579

ARM MEDICAID
STATE FISCAL YEAR 2012
MONTHLY AVERAGE CASES

COUNTY	RSM	LIM	OTHER ARM MEDICAID	TOTAL ARM
WILKES	431	144	95	671
WILKINSON	400	168	91	659
WORTH	387	145	100	632
STATE TOTAL	324,592	102,905	101,789	529,287

Source: SUCCESS Report DMF80311, AU Load Activity Report

ABD MEDICAID

PROGRAM DESCRIPTION:

Aged, Blind and Disabled Medicaid (ABD) is medical assistance for aged, blind or disabled individuals who are not eligible for SSI. These individuals receive Medicaid only.

DATA TABLE DESCRIPTION:

ABD MEDICAID – Monthly Average Cases SFY 2012

QMB: Qualified Medicare Beneficiaries – a “non-Medicaid” COA under which recipients are entitled to limited Medicaid services, such as payment by Medicaid of their Medicare Premiums, deductibles and co-insurance.

OTHER ABD: The Other ABD Medicaid category includes the following programs: Nursing Home (NH), Hospital Care NH Medically Needy, Specified Low-Income Medicare Beneficiaries (SLMB), Qualified Disabled Working Individuals, Former SSI-Disabled Child, Medically Needy and Waivers (Katie Beckett, Mental Retardation & Model).

PROCEDURE:

The total number of cases average for the SFY by category for each county. Total ABD is the sum of QMB cases, plus Other ABD Medicaid. The State Total is the sum of each category.

AGED, BLIND AND DISABLED MEDICAID

STATE FISCAL YEAR 2012
MONTHLY AVERAGE CASES

COUNTY	QMB	OTHER	TOTAL ABD
APPLING	354	361	715
ATKINSON	140	94	234
BACON	210	195	405
BAKER	105	77	182
BALDWIN	493	647	1,140
BANKS	327	330	658
BARROW	741	724	1,465
BARTOW	894	968	1,862
BEN HILL	385	430	815
BERRIEN	139	163	301
BIBB	2,036	2,304	4,340
BLECKLEY	184	175	360
BRANTLEY	235	253	488
BROOKS	116	158	273
BRYAN	190	199	389
BULLOCH	594	591	1,185
BURKE	467	385	852
BUTTS	17	12	28
CALHOUN	136	164	300
CAMDEN	340	305	645
CANDLER	267	382	649
CARROLL	773	992	1,765
CATOOSA	1,289	1,613	2,902
CHARLTON	164	198	362
CHATHAM	2,099	2,124	4,223
CHATTAHOOCHEE	37	40	77
CHATTOOGA	365	461	826
CHEROKEE	320	331	652
CLARKE	951	1,010	1,962
CLAY	126	103	229
CLAYTON	448	302	750
CLINCH	77	86	163
COBB	3,133	3,908	7,040
COFFEE	727	645	1,372
COLQUITT	584	609	1,193
COLUMBIA	471	545	1,016
COOK	112	146	258
COWETA	590	637	1,228
CRAWFORD	192	233	425
CRISP	412	398	809
DADE	239	311	550
DAWSON	132	106	238
DECATUR	486	543	1,029
DEKALB	4,516	4,828	9,344
DODGE	364	392	756
DOOLY	213	187	400
DOUGHERTY	1,462	1,454	2,916
DOUGLAS	294	276	569
EARLY	274	242	515
ECHOLS	9	10	19
EFFINGHAM	303	304	606
ELBERT	456	565	1,021

AGED, BLIND AND DISABLED MEDICAID

STATE FISCAL YEAR 2012
MONTHLY AVERAGE CASES

COUNTY	QMB	OTHER	TOTAL ABD
EMANUEL	501	505	1,006
EVANS	197	173	369
FANNIN	419	458	877
FAYETTE	151	192	342
FLOYD	1,405	1,805	3,210
FORSYTH	314	360	673
FRANKLIN	510	583	1,093
FULTON	6,412	6,967	13,379
GILMER	512	542	1,054
GLASCOCK	67	112	179
GLYNN	750	854	1,603
GORDON	532	629	1,161
GRADY	448	390	838
GREENE	321	300	620
GWINNETT	2,923	3,151	6,074
HABERSHAM	571	637	1,208
HALL	320	265	585
HANCOCK	212	244	456
HARALSON	482	592	1,074
HARRIS	252	266	518
HART	568	631	1,198
HEARD	148	174	321
HENRY	2,524	2,606	5,130
HOUSTON	826	953	1,779
IRWIN	89	95	183
JACKSON	668	747	1,415
JASPER	191	194	385
JEFF DAVIS	270	322	592
JEFFERSON	346	410	756
JENKINS	169	193	362
JOHNSON	221	263	483
JONES	277	337	614
LAMAR	142	173	315
LANIER	47	59	106
LAURENS	817	831	1,648
LEE	25	11	37
LIBERTY	284	283	567
LINCOLN	127	119	245
LONG	106	144	249
LOWNDES	2,268	2,526	4,794
LUMPKIN	314	444	758
MACON	285	348	632
MADISON	452	472	924
MARION	161	191	352
MCDUFFIE	387	354	740
MCINTOSH	165	135	300
MERIWETHER	1,147	1,365	2,512
MILLER	5	6	11
MITCHELL	474	439	913
MONROE	338	392	730
MONTGOMERY	150	113	263
MORGAN	293	263	556

AGED, BLIND AND DISABLED MEDICAID

STATE FISCAL YEAR 2012
MONTHLY AVERAGE CASES

COUNTY	QMB	OTHER	TOTAL ABD
MURRAY	605	607	1,212
MUSCOGEE	2,155	2,298	4,453
NEWTON	907	982	1,889
OCONEE	151	180	331
OGLETHORPE	195	220	415
PAULDING	666	721	1,388
PEACH	313	236	549
PICKENS	408	413	820
PIERCE	265	293	558
PIKE	552	687	1,240
POLK	610	672	1,282
PULASKI	164	167	331
PUTNAM	253	259	512
QUITMAN	50	55	105
RABUN	795	874	1,669
RANDOLPH	197	198	396
RICHMOND	2,531	2,563	5,094
ROCKDALE	545	585	1,130
SCHLEY	61	53	113
SCREVEN	231	257	488
SEMINOLE	327	324	651
SPALDING	1,051	1,251	2,302
STEPHENS	1,238	1,130	2,368
STEWART	159	169	328
SUMTER	639	682	1,321
TALBOT	147	127	274
TALIAFERRO	46	31	78
TATTNALL	365	370	734
TAYLOR	163	168	331
TELFAR	280	353	634
TERRELL	13	7	20
THOMAS	799	825	1,625
TIFT	359	398	757
TOOMBS	552	616	1,168
TOWNS	191	193	385
TREUTLEN	145	137	282
TROUP	64	62	126
TURNER	11	17	28
TWIGGS	162	208	371
UNION	221	181	402
UPSON	665	903	1,569
WALKER	637	788	1,425
WALTON	689	756	1,445
WARE	759	871	1,630
WARREN	181	165	346
WASHINGTON	420	362	782
WAYNE	462	482	944
WEBSTER	57	38	94
WHEELER	97	116	213
WHITE	267	300	567
WHITFIELD	989	1,194	2,183
WILCOX	171	231	402

AGED, BLIND AND DISABLED MEDICAID

STATE FISCAL YEAR 2012
MONTHLY AVERAGE CASES

COUNTY	QMB	OTHER	TOTAL ABD
WILKES	253	211	465
WILKINSON	134	151	286
WORTH	670	718	1,387
STATE TOTAL	86,600	93,985	180,585

SOURCE: SUCCESS REPORT DMF80311, AU LOAD ACTIVITY REPORT

MEDICAID

PROGRAM DESCRIPTION:

Medicaid is medical insurance for individuals and families who are eligible based on criteria funded under Title XIX of the Social Security Act.

DATA TABLE DESCRIPTION:

MEDICAID – Purchased Services by Recipient’s County of Residence – SFY 2012

RECIPIENTS: An individual who receives public assistance.

EXPENDITURES: Total dollars spent on one or more medical services.

PROCEDURE:

The total number of recipients who have one or more medical services received thru Medicaid in a county. Total Expenditure is one or more medical services received thru Medicaid by county. The Average Cost is the sum of recipients divided by the sum of expenditures by county. The State Total is sum of recipients and total expenditures.

MEDICAID - PURCHASED SERVICES BY RECIPIENT'S COUNTY OF RESIDENCE

STATE FISCAL YEAR 2012

COUNTY	RECIPIENTS	EXPENDITURES	AVERAGE COST
APPLING	10,591	\$14,992,758.70	\$1,415.61
ATKINSON	5,218	\$5,493,651.13	\$1,052.83
BACON	6,324	\$9,876,654.37	\$1,561.77
BAKER	1,432	\$1,452,606.95	\$1,014.39
BALDWIN	17,264	\$48,771,871.96	\$2,825.06
BANKS	7,349	\$12,554,061.04	\$1,708.27
BARROW	23,907	\$34,794,665.81	\$1,455.42
BARTOW	35,103	\$48,707,946.69	\$1,387.57
BEN HILL	11,531	\$17,997,508.96	\$1,560.79
BERRIEN	10,235	\$14,056,573.48	\$1,373.38
BIBB	80,675	\$161,388,557.53	\$2,000.48
BLECKLEY	4,964	\$7,809,222.67	\$1,573.17
BRANTLEY	8,015	\$8,807,462.14	\$1,098.87
BROOKS	8,835	\$12,323,020.05	\$1,394.80
BRYAN	7,128	\$10,903,196.45	\$1,529.63
BULLOCH	23,047	\$35,949,687.28	\$1,559.84
BURKE	13,131	\$18,012,595.54	\$1,371.76
BUTTS	10,147	\$15,173,024.18	\$1,495.32
CALHOUN	4,078	\$6,796,587.19	\$1,666.65
CAMDEN	12,885	\$13,083,475.89	\$1,015.40
CANDLER	7,401	\$16,858,088.85	\$2,277.81
CARROLL	41,776	\$59,170,932.90	\$1,416.39
CATOOSA	17,742	\$22,006,907.74	\$1,240.38
CHARLTON	5,183	\$6,710,571.23	\$1,294.73
CHATHAM	82,508	\$144,119,505.75	\$1,746.73
CHATTAHOOCHEE	1,510	\$2,065,915.50	\$1,368.16
CHATTOOGA	13,068	\$19,777,031.45	\$1,513.39
CHEROKEE	29,299	\$43,967,521.18	\$1,500.65
CLARKE	36,570	\$62,069,500.52	\$1,697.28
CLAY	2,197	\$4,577,925.80	\$2,083.72
CLAYTON	106,948	\$154,500,053.33	\$1,444.63
CLINCH	5,026	\$6,839,500.42	\$1,360.82
COBB	138,444	\$230,865,977.97	\$1,667.58
COFFEE	24,279	\$29,693,790.52	\$1,223.02
COLQUITT	25,148	\$34,714,263.84	\$1,380.40
COLUMBIA	20,056	\$32,887,257.27	\$1,639.77
COOK	9,254	\$13,347,931.44	\$1,442.40
COWETA	26,340	\$40,919,096.55	\$1,553.50
CRAWFORD	4,755	\$7,187,210.67	\$1,511.51
CRISP	13,829	\$24,850,570.12	\$1,796.99
DADE	4,997	\$7,635,453.30	\$1,528.01
DAWSON	5,878	\$7,275,047.64	\$1,237.67
DECATUR	14,804	\$22,201,981.73	\$1,499.73
DEKALB	226,900	\$408,582,874.31	\$1,800.72
DODGE	11,068	\$18,093,294.94	\$1,634.74
DOOLY	6,088	\$9,192,985.73	\$1,510.02

MEDICAID - PURCHASED SERVICES BY RECIPIENT'S COUNTY OF RESIDENCE

STATE FISCAL YEAR 2012

COUNTY	RECIPIENTS	EXPENDITURES	AVERAGE COST
DOUGHERTY	57,198	\$85,010,737.09	\$1,486.25
DOUGLAS	34,894	\$59,918,955.39	\$1,717.17
EARLY	7,005	\$10,216,663.35	\$1,458.48
ECHOLS	961	\$942,597.54	\$980.85
EFFINGHAM	11,809	\$16,814,483.46	\$1,423.87
ELBERT	11,109	\$19,261,666.33	\$1,733.88
EMANUEL	16,146	\$27,308,546.38	\$1,691.35
EVANS	6,264	\$7,994,019.95	\$1,276.18
FANNIN	10,474	\$14,694,603.32	\$1,402.96
FAYETTE	11,912	\$20,707,098.28	\$1,738.34
FLOYD	47,324	\$77,493,631.92	\$1,637.51
FORSYTH	17,518	\$24,724,234.45	\$1,411.36
FRANKLIN	10,705	\$15,755,023.40	\$1,471.74
FULTON	275,672	\$533,105,035.31	\$1,933.84
GILMER	9,930	\$15,422,396.04	\$1,553.11
GLASCOCK	1,750	\$3,946,568.77	\$2,255.18
GLYNN	27,138	\$43,939,493.66	\$1,619.11
GORDON	23,348	\$29,668,721.29	\$1,270.72
GRADY	11,370	\$13,475,632.67	\$1,185.19
GREENE	6,876	\$11,769,125.22	\$1,711.62
GWINNETT	163,820	\$226,589,770.13	\$1,383.16
HABERSHAM	14,273	\$23,775,225.15	\$1,665.75
HALL	55,158	\$77,594,810.83	\$1,406.77
HANCOCK	4,864	\$9,823,431.91	\$2,019.62
HARALSON	15,397	\$21,759,565.52	\$1,413.23
HARRIS	5,875	\$10,116,737.13	\$1,722.00
HART	9,804	\$17,191,609.72	\$1,753.53
HEARD	5,351	\$7,177,688.10	\$1,341.37
HENRY	45,336	\$80,863,125.40	\$1,783.64
HOUSTON	40,125	\$60,149,720.78	\$1,499.06
IRWIN	5,503	\$8,176,144.56	\$1,485.76
JACKSON	18,857	\$30,011,400.90	\$1,591.53
JASPER	4,664	\$6,829,483.89	\$1,464.30
JEFF DAVIS	8,567	\$11,044,776.73	\$1,289.22
JEFFERSON	11,252	\$18,597,997.57	\$1,652.86
JENKINS	5,439	\$9,786,733.36	\$1,799.36
JOHNSON	5,978	\$12,819,903.56	\$2,144.51
JONES	6,981	\$12,162,909.38	\$1,742.29
LAMAR	6,630	\$10,199,122.77	\$1,538.33
LANIER	4,498	\$6,833,918.54	\$1,519.32
LAURENS	24,975	\$41,684,731.04	\$1,669.06
LEE	6,715	\$9,243,570.74	\$1,376.56
LIBERTY	15,510	\$18,894,708.50	\$1,218.23
LINCOLN	2,955	\$3,698,291.90	\$1,251.54
LONG	4,672	\$8,152,163.54	\$1,744.90
LOWNDES	46,908	\$77,354,496.62	\$1,649.07

MEDICAID - PURCHASED SERVICES BY RECIPIENT'S COUNTY OF RESIDENCE

STATE FISCAL YEAR 2012

COUNTY	RECIPIENTS	EXPENDITURES	AVERAGE COST
LUMPKIN	8,916	\$12,109,121.98	\$1,358.13
MACON	8,220	\$16,859,080.16	\$2,050.98
MADISON	12,508	\$18,349,419.37	\$1,467.01
MARION	2,861	\$5,652,118.56	\$1,975.57
MCDUFFIE	11,143	\$16,700,927.95	\$1,498.78
MCINTOSH	4,860	\$5,190,623.13	\$1,068.03
MERIWETHER	13,573	\$23,789,642.25	\$1,752.72
MILLER	3,914	\$10,670,066.40	\$2,726.13
MITCHELL	13,510	\$19,637,938.43	\$1,453.59
MONROE	8,119	\$16,470,832.22	\$2,028.68
MONTGOMERY	4,552	\$5,329,535.62	\$1,170.81
MORGAN	5,872	\$9,747,220.55	\$1,659.95
MURRAY	18,062	\$19,888,766.39	\$1,101.14
MUSCOGEE	79,583	\$145,402,379.97	\$1,827.05
NEWTON	35,782	\$49,172,127.77	\$1,374.21
OCONEE	5,079	\$7,910,747.47	\$1,557.54
OGLETHORPE	4,111	\$6,528,179.71	\$1,587.98
PAULDING	26,533	\$36,397,123.21	\$1,371.77
PEACH	11,532	\$18,271,274.18	\$1,584.40
PICKENS	9,767	\$17,490,664.90	\$1,790.79
PIERCE	10,041	\$13,977,406.87	\$1,392.03
PIKE	6,769	\$8,922,223.64	\$1,318.10
POLK	21,737	\$30,740,229.45	\$1,414.19
PULASKI	4,401	\$8,482,494.62	\$1,927.40
PUTNAM	6,989	\$11,124,819.48	\$1,591.76
QUITMAN	699	\$604,703.42	\$865.10
RABUN	6,724	\$10,317,440.61	\$1,534.42
RANDOLPH	4,768	\$8,359,927.74	\$1,753.34
RICHMOND	89,637	\$182,309,536.62	\$2,033.86
ROCKDALE	24,366	\$38,184,107.23	\$1,567.11
SCHLEY	1,809	\$1,604,477.43	\$886.94
SCREVEN	8,209	\$13,771,129.13	\$1,677.56
SEMINOLE	4,729	\$6,533,413.41	\$1,381.56
SPALDING	29,034	\$47,998,871.94	\$1,653.20
STEPHENS	15,102	\$21,691,724.66	\$1,436.35
STEWART	3,193	\$6,210,489.21	\$1,945.03
SUMTER	18,986	\$32,844,949.38	\$1,729.96
TALBOT	2,995	\$4,058,887.39	\$1,355.22
TALIAFERRO	1,169	\$1,448,715.12	\$1,239.28
TATTNALL	11,903	\$19,380,139.83	\$1,628.17
TAYLOR	5,225	\$9,258,973.16	\$1,772.05
TELFAIR	7,552	\$16,354,604.43	\$2,165.60
TERRELL	6,180	\$8,231,023.08	\$1,331.88
THOMAS	24,896	\$42,135,890.63	\$1,692.48
TIFT	22,933	\$30,574,301.16	\$1,333.20
TOOMBS	18,722	\$28,125,323.86	\$1,502.26

MEDICAID - PURCHASED SERVICES BY RECIPIENT'S COUNTY OF RESIDENCE

STATE FISCAL YEAR 2012

COUNTY	RECIPIENTS	EXPENDITURES	AVERAGE COST
TOWNS	2,792	\$4,151,211.02	\$1,486.82
TREUTLEN	4,002	\$7,710,444.45	\$1,926.65
TROUP	29,659	\$43,802,808.03	\$1,476.88
TURNER	6,213	\$9,722,234.86	\$1,564.82
TWIGGS	3,925	\$7,728,327.91	\$1,969.00
UNION	6,744	\$11,067,858.39	\$1,641.14
UPSON	14,559	\$22,351,719.74	\$1,535.25
WALKER	27,863	\$42,669,400.14	\$1,531.40
WALTON	26,428	\$37,556,712.30	\$1,421.10
WARE	24,753	\$40,143,536.63	\$1,621.76
WARREN	3,482	\$5,854,953.63	\$1,681.49
WASHINGTON	11,030	\$19,780,783.64	\$1,793.36
WAYNE	15,353	\$19,804,413.60	\$1,289.94
WEBSTER	1,107	\$1,207,114.20	\$1,090.44
WHEELER	3,232	\$5,594,913.42	\$1,731.10
WHITE	9,104	\$13,658,219.78	\$1,500.24
WHITFIELD	39,313	\$49,905,440.98	\$1,269.44
WILCOX	4,949	\$9,448,237.65	\$1,909.12
WILKES	5,474	\$8,594,232.29	\$1,570.01
WILKINSON	4,315	\$8,392,737.80	\$1,945.01
WORTH	9,285	\$11,105,146.89	\$1,196.03
STATE TOTAL	3,223,284	\$5,226,821,631.87	\$1,621.58

SOURCE: DEPARTMENT OF COMMUNITY HEALTH. PURCHASED SERVICES REPORT MR-0-83 HMGR585G

**COUNTY STATISTICAL REPORTING
SYSTEM (COSTAR)**

COSTAR

PROGRAM DESCRIPTION:

County Statistical Reporting System (COSTAR) is primarily to track purchase of services and Title IV-E expenditures.

DATA TABLE DESCRIPTION:

PAYMENTS BY CATEGORY FOR CHILDREN IN CHILDCARE – Monthly Average Children Receiving Payment SFY 2012

APPLICANT SERVICES: To provide childcare to TANF applicants who need childcare in order to conduct job search activities through the Employment Services Program.

TANF: To enable Temporary Assistance for Needy Families (TANF) applicants and recipients to find and maintain employment by providing needed education, training or employment services. The goal is for the client to avoid TANF receipt or to leave TANF and be self-sufficient.

TRANSITIONAL: To provide childcare as a support service to recent TANF applicants/recipients as they stabilize in new employment activities.

LOW INCOME WORKING: To provide childcare to low-income families who are working, in school or in training.

PRE-K: To provide extended day child care for non-TANF recipients whose children attend Georgia lottery funded Pre-K programs.

FOSTER CARE SUPPLEMENTAL SUPERVISION: To charge expenditures for childcare provided to children who reside in a DFCS Family Foster Home (Regular or Relative) and need children when the foster parent works outside of the home or the child in foster care needs childcare in support of a protective service plan.

PROCEDURE:

The total number of client counts average for the SFY by category for each county. The Total is the sum of Applicant Services, plus TANF, Transitional, Low Income Working, Pre-K and Foster Care Supplemental Supervision. The State Total is the sum of each category.

PAYMENTS BY CATEGORY FOR CHILDREN IN CHILDCARE

STATE FISCAL YEAR 2012
MONTHLY AVERAGE CHILDREN RECEIVING PAYMENTS

COUNTY	APPLICANT SERVICES	TANF	TRANSITIONAL	LOW INCOME WORKING	Pre-K	FOSTER CARE SUPPLEMENTAL SUPERVISION	TOTAL
APPLING	0	1	0	92	9	3	105
ATKINSON	0	0	0	15	0	1	16
BACON	0	0	0	60	0	9	69
BAKER	0	0	0	10	0	1	11
BALDWIN	26	8	17	848	44	35	978
BANKS	0	2	0	46	1	3	52
BARROW	0	2	9	142	21	15	189
BARTOW	7	4	14	416	14	67	522
BEN HILL	0	0	0	92	0	4	96
BERRIEN	0	0	0	17	0	9	26
BIBB	121	136	51	4,851	57	111	5327
BLECKLEY	0	0	0	51	5	0	56
BRANTLEY	1	0	1	59	1	4	66
BROOKS	1	0	0	93	1	9	104
BRYAN	0	0	0	86	1	1	88
BULLOCH	13	2	10	408	14	25	472
BURKE	2	4	3	419	7	11	446
BUTTS	7	3	11	231	1	13	266
CALHOUN	0	0	0	8	0	4	12
CAMDEN	0	0	0	279	11	47	337
CANDLER	0	1	0	36	0	3	40
CARROLL	31	11	23	320	11	40	436
CATOOSA	1	3	4	166	2	42	218
CHARLTON	0	0	0	51	0	3	54
CHATHAM	4	0	9	3,621	73	117	3824
CHATTAHOOCHEE	0	0	5	14	0	1	20
CHATTOOGA	0	4	4	24	0	13	45
CHEROKEE	14	12	27	263	16	111	443
CLARKE	31	48	89	510	35	40	753
CLAY	0	1	0	29	0	0	30
CLAYTON	256	20	1,046	5,910	23	242	7497
CLINCH	0	0	0	1	0	0	1
COBB	192	209	723	2,458	128	262	3972
COFFEE	0	0	7	153	0	13	173
COLQUITT	3	1	0	346	3	30	383
COLUMBIA	1	3	13	297	1	20	335
COOK	0	0	0	46	0	51	97
COWETA	7	8	16	618	16	31	696
CRAWFORD	1	0	1	41	3	2	48
CRISP	1	2	1	119	2	11	136
DADE	0	0	0	5	0	3	8
DAWSON	0	5	0	82	4	22	113
DECATUR	0	1	0	220	11	33	265
DEKALB	853	1,483	1,296	5,026	61	418	9137
DODGE	3	2	0	133	13	3	154
DOOLY	0	0	0	63	0	5	68
DOUGHERTY	47	118	32	2,177	49	89	2512
DOUGLAS	64	50	216	1,112	7	106	1555
EARLY	0	1	0	104	1	1	107
ECHOLS	0	0	0	9	0	0	9
EFFINGHAM	0	0	0	162	6	5	173

PAYMENTS BY CATEGORY FOR CHILDREN IN CHILDCARE

STATE FISCAL YEAR 2012
MONTHLY AVERAGE CHILDREN RECEIVING PAYMENTS

COUNTY	APPLICANT SERVICES	TANF	TRANSITIONAL	LOW INCOME WORKING	Pre-K	FOSTER CARE SUPPLEMENTAL SUPERVISION	TOTAL
ELBERT	1	5	1	78	0	5	90
EMANUEL	1	0	2	350	20	2	375
EVANS	0	3	2	24	1	9	39
FANNIN	1	5	7	56	2	6	77
FAYETTE	9	1	16	237	0	39	302
FLOYD	25	9	18	576	58	62	748
FORSYTH	2	10	17	208	19	33	289
FRANKLIN	0	6	3	78	0	13	100
FULTON	711	851	1,077	10,792	187	249	13867
GILMER	0	0	0	25	1	13	39
GLASCOCK	0	0	0	2	0	0	2
GLYNN	2	0	1	758	11	77	849
GORDON	2	3	3	244	2	52	306
GRADY	1	0	0	160	5	6	172
GREENE	2	1	2	14	2	0	21
GWINNETT	139	234	442	3,400	223	225	4663
HABERSHAM	1	8	1	66	4	10	90
HALL	9	43	37	775	68	57	989
HANCOCK	0	1	0	41	2	1	45
HARALSON	0	0	0	75	5	36	116
HARRIS	0	2	1	64	4	6	77
HART	1	14	7	76	0	20	118
HEARD	0	0	0	23	1	3	27
HENRY	35	4	101	1,148	14	137	1439
HOUSTON	57	34	141	1,288	148	38	1706
IRWIN	0	0	0	83	0	5	88
JACKSON	1	1	5	124	4	13	148
JASPER	0	0	0	94	1	7	102
JEFF DAVIS	0	1	3	63	1	7	75
JEFFERSON	0	4	5	104	2	2	117
JENKINS	0	2	5	71	2	0	80
JOHNSON	1	1	1	103	0	0	106
JONES	2	0	1	199	6	24	232
LAMAR	2	7	1	208	0	16	234
LANIER	0	0	0	15	0	2	17
LAURENS	1	7	3	450	16	16	493
LEE	1	1	1	337	5	3	348
LIBERTY	2	2	2	297	12	29	344
LINCOLN	1	0	0	48	0	1	50
LONG	0	0	3	76	0	3	82
LOWNDES	4	0	23	1,276	12	66	1381
LUMPKIN	1	11	4	78	1	8	103
MACON	0	0	0	126	1	17	144
MADISON	1	3	2	84	4	27	121
MARION	0	1	1	8	0	1	11
MCDUFFIE	1	1	2	435	4	8	451
MCINTOSH	0	0	0	24	0	3	27
MERIWETHER	1	2	3	136	0	1	143
MILLER	0	0	0	48	0	1	49
MITCHELL	2	1	1	194	9	14	221
MONROE	3	0	3	91	2	22	121

PAYMENTS BY CATEGORY FOR CHILDREN IN CHILDCARE

STATE FISCAL YEAR 2012
MONTHLY AVERAGE CHILDREN RECEIVING PAYMENTS

COUNTY	APPLICANT SERVICES	TANF	TRANSITIONAL	LOW INCOME WORKING	Pre-K	FOSTER CARE SUPPLEMENTAL SUPERVISION	TOTAL
MONTGOMERY	0	2	1	35	1	0	39
MORGAN	2	2	2	50	4	18	78
MURRAY	0	3	1	81	0	22	107
MUSCOGEE	140	219	268	2,339	116	75	3157
NEWTON	22	50	65	838	16	88	1079
OCONEE	0	0	1	33	3	11	48
OGLETHORPE	0	0	3	32	2	3	40
PAULDING	10	8	14	603	26	67	728
PEACH	9	0	17	276	18	20	340
PICKENS	1	18	0	22	1	16	58
PIERCE	0	0	0	80	0	17	97
PIKE	0	0	0	129	0	12	141
POLK	1	1	0	101	2	39	144
PULASKI	2	0	6	116	5	0	129
PUTNAM	7	123	18	239	2	7	396
QUITMAN	0	0	0	3	0	0	3
RABUN	0	0	0	23	0	6	29
RANDOLPH	0	1	0	7	0	0	8
RICHMOND	175	52	315	3,606	13	116	4277
ROCKDALE	37	73	148	954	41	93	1346
SCHLEY	0	0	0	5	0	0	5
SCREVEN	0	1	0	143	1	21	166
SEMINOLE	0	0	0	176	5	2	183
SPALDING	25	17	41	694	5	33	815
STEPHENS	2	22	9	234	3	19	289
STEWART	0	0	0	0	0	0	0
SUMTER	0	5	0	262	5	11	283
TALBOT	0	1	0	24	0	0	25
TALIAFERRO	0	0	0	12	0	0	12
TATTNALL	0	4	0	110	1	2	117
TAYLOR	0	0	0	0	0	0	0
TELFAIR	0	3	2	85	2	0	92
TERRELL	2	0	0	87	1	0	90
THOMAS	2	0	1	311	6	25	345
TIFT	0	0	0	357	4	41	402
TOOMBS	0	1	0	341	11	17	370
TOWNS	0	0	0	20	0	5	25
TREUTLEN	0	2	6	43	0	0	51
TROUP	13	8	26	785	23	18	873
TURNER	0	0	0	27	0	9	36
TWIGGS	0	0	0	12	1	4	17
UNION	0	2	0	8	0	10	20
UPSON	3	3	8	95	2	3	114
WALKER	2	4	3	88	3	36	136
WALTON	13	8	31	450	12	19	533
WARE	1	0	0	182	0	22	205
WARREN	0	0	0	41	5	0	46
WASHINGTON	0	4	7	211	0	9	231
WAYNE	1	1	4	107	3	7	123
WEBSTER	1	0	0	2	0	0	3
WHEELER	0	1	0	23	0	0	24

PAYMENTS BY CATEGORY FOR CHILDREN IN CHILDCARE

STATE FISCAL YEAR 2012

MONTHLY AVERAGE CHILDREN RECEIVING PAYMENTS

COUNTY	APPLICANT SERVICES	TANF	TRANSITIONAL	LOW INCOME WORKING	Pre-K	FOSTER CARE SUPPLEMENTAL SUPERVISION	TOTAL
WHITE	0	3	1	69	1	16	90
WHITFIELD	2	9	9	171	15	50	256
WILCOX	0	0	0	20	3	0	23
WILKES	0	1	6	88	0	0	95
WILKINSON	4	0	4	58	5	3	74
WORTH	0	0	0	186	2	5	193
STATE TOTAL	3,187	4,076	6,593	72,763	1,880	4,481	92,980

SOURCE: COSTAR (Total may differ due to rounding).

NOTE: Payments to vendors for services result in duplication in counting individual children.

(State funded services were omitted.)

COSTAR

PROGRAM DESCRIPTION:

County Statistical Reporting System (COSTAR) is primarily to track purchase of services and Title IV-E expenditures.

DATA TABLE DESCRIPTION:

PAYMENTS BY CATEGORY FOR CHILDREN IN CHILDCARE – Annual Expenditure SFY 2012

APPLICANT SERVICES: To provide childcare to TANF applicants who need childcare in order to conduct job search activities through the Employment Services Program.

TANF: To enable Temporary Assistance for Needy Families (TANF) applicants and recipients to find and maintain employment by providing needed education, training or employment services. The goal is for the client to avoid TANF receipt or to leave TANF and be self-sufficient.

TRANSITIONAL: To provide childcare as a support service to recent TANF applicants/recipients as they stabilize in new employment activities.

LOW INCOME WORKING: To provide childcare to low-income families who are working, in school or in training.

PRE-K: To provide extended day child care for non-TANF recipients whose children attend Georgia lottery funded Pre-K programs.

FOSTER CARE SUPPLEMENTAL SUPERVISION: To charge expenditures for childcare provided to children who reside in a DFCS Family Foster Home (Regular or Relative) and need children when the foster parent works outside of the home or the child in foster care needs childcare in support of a protective service plan.

PROCEDURE:

The total expenditure is one or more services for the SFY by category for each county. The Total is the sum of Applicant Services, plus TANF, Transitional, Low Income Working, Pre-K and Foster Care Supplemental Supervision. The State Total is the sum of each category.

PAYMENTS BY CATEGORY FOR CHILDREN IN CHILDCARE

STATE FISCAL YEAR 2012

Annual Expenditures

COUNTY	APPLICANT SERVICES	TANF	TRANSITIONAL	LOW INCOME WORKING	Pre-K	FOSTER CARE SUPPLEMENTAL SUPERVISION	TOTAL
APPLING	\$0	\$150	\$0	\$96,372	\$7,854	\$4,683	\$109,059
ATKINSON	\$0	\$0	\$0	\$14,557	\$0	\$947	\$15,504
BACON	\$0	\$0	\$0	\$64,016	\$0	\$14,514	\$78,530
BAKER	\$0	\$140	\$0	\$13,949	\$0	\$810	\$14,899
BALDWIN	\$47,479	\$9,430	\$27,675	\$1,175,046	\$42,036	\$60,004	\$1,361,670
BANKS	\$330	\$1,827	\$0	\$43,911	\$374	\$6,400	\$52,842
BARROW	\$241	\$18,208	\$12,262	\$189,410	\$20,819	\$35,667	\$276,607
BARTOW	\$12,394	\$5,439	\$19,817	\$590,771	\$14,249	\$157,661	\$800,331
BEN HILL	\$0	\$275	\$0	\$85,155	\$0	\$6,275	\$91,705
BERRIEN	\$0	\$0	\$0	\$19,946	\$0	\$19,141	\$39,087
BIBB	\$191,235	\$551,275	\$83,630	\$7,607,422	\$67,765	\$224,663	\$8,725,990
BLECKLEY	\$70	\$130	\$36	\$49,574	\$4,482	\$0	\$54,292
BRANTLEY	\$980	\$0	\$1,764	\$61,318	\$697	\$6,636	\$71,395
BROOKS	\$840	\$0	\$0	\$118,337	\$460	\$16,354	\$135,991
BRYAN	\$0	\$0	\$0	\$118,978	\$772	\$945	\$120,695
BULLOCH	\$20,813	\$1,937	\$17,283	\$560,773	\$12,022	\$64,964	\$677,792
BURKE	\$1,494	\$2,870	\$4,551	\$477,277	\$4,651	\$18,957	\$509,800
BUTTS	\$10,074	\$8,400	\$18,585	\$331,036	\$878	\$26,955	\$395,928
CALHOUN	\$0	\$125	\$0	\$10,056	\$0	\$8,800	\$18,981
CAMDEN	\$0	\$0	\$0	\$508,468	\$12,367	\$124,207	\$645,042
CANDLER	\$0	\$330	\$0	\$36,965	\$0	\$5,780	\$43,075
CARROLL	\$32,844	\$24,600	\$28,067	\$377,137	\$9,058	\$83,350	\$555,056
CATOOSA	\$1,230	\$1,185	\$4,291	\$217,926	\$2,279	\$99,902	\$326,813
CHARLTON	\$650	\$0	\$355	\$52,822	\$0	\$5,915	\$59,742
CHATHAM	\$5,811	\$0	\$14,960	\$5,051,653	\$70,766	\$286,838	\$5,430,028
CHATTAHOOCHEE	\$176	\$35	\$6,878	\$16,907	\$0	\$1,735	\$25,731
CHATTOOGA	\$0	\$1,518	\$6,666	\$32,375	\$190	\$29,330	\$70,079
CHEROKEE	\$29,405	\$49,169	\$57,545	\$513,864	\$23,535	\$417,966	\$1,091,484
CLARKE	\$46,287	\$132,213	\$137,095	\$696,432	\$34,323	\$108,895	\$1,155,245
CLAY	\$0	\$180	\$0	\$29,031	\$0	\$0	\$29,211
CLAYTON	\$536,519	\$431,481	\$2,358,170	\$11,389,686	\$28,236	\$628,745	\$15,372,837
CLINCH	\$0	\$0	\$0	\$1,410	\$0	\$280	\$1,690
COBB	\$388,828	\$465,181	\$1,566,714	\$4,802,758	\$145,630	\$815,644	\$8,184,755
COFFEE	\$0	\$45	\$9,047	\$183,389	\$39	\$26,695	\$219,215
COLQUITT	\$4,604	\$600	\$0	\$402,549	\$1,608	\$55,591	\$464,952
COLUMBIA	\$1,863	\$3,309	\$19,281	\$368,784	\$899	\$45,857	\$439,993
COOK	\$210	\$0	\$0	\$51,641	\$0	\$75,456	\$127,307
COWETA	\$9,853	\$13,155	\$25,045	\$883,963	\$15,549	\$86,546	\$1,034,111
CRAWFORD	\$2,345	\$0	\$2,019	\$57,516	\$2,304	\$5,806	\$69,990
CRISP	\$2,265	\$1,638	\$2,184	\$130,017	\$1,020	\$20,017	\$157,141
DADE	\$140	\$75	\$136	\$4,589	\$0	\$7,995	\$12,935
DAWSON	\$0	\$4,752	\$0	\$102,140	\$3,640	\$62,307	\$172,839
DECATUR	\$646	\$955	\$0	\$240,138	\$7,156	\$57,364	\$306,259
DEKALB	\$1,931,773	\$1,023,014	\$2,852,092	\$9,736,863	\$73,655	\$1,142,405	\$16,759,801
DODGE	\$3,528	\$1,616	\$0	\$139,369	\$9,853	\$4,730	\$159,096
DOOLY	\$65	\$0	\$0	\$71,760	\$0	\$8,735	\$80,560
DOUGHERTY	\$74,168	\$74,654	\$52,330	\$3,142,437	\$52,017	\$163,176	\$3,558,782
DOUGLAS	\$147,066	\$72,160	\$466,116	\$2,182,937	\$8,549	\$290,757	\$3,167,585
EARLY	\$0	\$667	\$0	\$104,984	\$496	\$1,229	\$107,376
ECHOLS	\$0	\$0	\$0	\$10,381	\$0	\$185	\$10,566
EFFINGHAM	\$0	\$0	\$0	\$245,531	\$5,456	\$15,731	\$266,718
ELBERT	\$1,826	\$17,155	\$540	\$86,690	\$0	\$9,454	\$115,665
EMANUEL	\$390	\$65	\$1,955	\$363,965	\$17,844	\$4,838	\$389,057
EVANS	\$0	\$2,954	\$1,782	\$26,571	\$238	\$20,300	\$51,845
FANNIN	\$2,015	\$3,231	\$7,695	\$58,135	\$1,129	\$13,780	\$85,985
FAYETTE	\$19,757	\$1,730	\$37,777	\$449,090	\$0	\$95,424	\$603,778
FLOYD	\$43,999	\$6,651	\$23,899	\$824,498	\$43,882	\$127,082	\$1,070,010
FORSYTH	\$3,579	\$6,846	\$35,653	\$391,634	\$28,661	\$112,991	\$579,364
FRANKLIN	\$280	\$5,095	\$3,132	\$81,075	\$0	\$27,412	\$116,994

PAYMENTS BY CATEGORY FOR CHILDREN IN CHILDCARE

STATE FISCAL YEAR 2012
Annual Expenditures

COUNTY	APPLICANT SERVICES	TANF	TRANSITIONAL	LOW INCOME WORKING	Pre-K	FOSTER CARE SUPPLEMENTAL SUPERVISION	TOTAL
FULTON	\$1,770,361	\$2,261,329	\$2,504,439	\$21,891,030	\$264,134	\$776,824	\$29,468,117
GILMER	\$0	\$50	\$0	\$33,281	\$1,960	\$29,762	\$65,053
GLASCOCK	\$0	\$0	\$0	\$1,413	\$0	\$0	\$1,413
GLYNN	\$2,396	\$0	\$1,740	\$1,042,147	\$9,295	\$179,699	\$1,235,277
GORDON	\$3,120	\$2,565	\$3,168	\$337,399	\$1,509	\$128,558	\$476,319
GRADY	\$992	\$185	\$384	\$173,334	\$2,209	\$13,887	\$190,991
GREENE	\$2,660	\$10,468	\$5,028	\$15,031	\$830	\$0	\$34,017
GWINNETT	\$326,580	\$289,912	\$912,586	\$6,463,261	\$294,060	\$671,317	\$8,957,716
HABERSHAM	\$1,250	\$9,472	\$2,370	\$80,173	\$3,188	\$18,224	\$114,677
HALL	\$19,704	\$90,389	\$83,313	\$1,486,797	\$78,736	\$160,392	\$1,919,331
HANCOCK	\$0	\$750	\$0	\$43,009	\$1,380	\$1,736	\$46,875
HARALSON	\$0	\$95	\$0	\$87,069	\$5,191	\$66,346	\$158,701
HARRIS	\$772	\$2,091	\$2,256	\$92,327	\$3,424	\$7,653	\$108,523
HART	\$1,032	\$11,439	\$9,290	\$91,614	\$0	\$38,789	\$152,164
HEARD	\$0	\$75	\$0	\$28,612	\$1,204	\$8,095	\$37,986
HENRY	\$67,150	\$81,230	\$219,101	\$2,080,005	\$15,057	\$324,694	\$2,787,237
HOUSTON	\$88,858	\$29,689	\$220,873	\$1,783,978	\$130,920	\$78,762	\$2,333,080
IRWIN	\$0	\$0	\$0	\$85,267	\$0	\$10,933	\$96,200
JACKSON	\$3,258	\$7,265	\$7,879	\$203,886	\$4,702	\$35,376	\$262,366
JASPER	\$350	\$896	\$0	\$97,471	\$257	\$16,209	\$115,183
JEFF DAVIS	\$195	\$628	\$2,600	\$70,643	\$430	\$9,225	\$83,721
JEFFERSON	\$130	\$2,994	\$5,195	\$96,469	\$1,383	\$4,098	\$110,269
JENKINS	\$0	\$1,330	\$6,273	\$69,931	\$807	\$0	\$78,341
JOHNSON	\$1,385	\$300	\$1,072	\$107,869	\$280	\$0	\$110,906
JONES	\$2,174	\$0	\$1,697	\$256,396	\$6,251	\$58,261	\$324,779
LAMAR	\$2,834	\$8,247	\$1,367	\$325,507	\$0	\$36,290	\$374,245
LANIER	\$0	\$0	\$0	\$18,632	\$0	\$4,705	\$23,337
LAURENS	\$860	\$4,918	\$3,415	\$505,734	\$9,348	\$31,253	\$555,528
LEE	\$2,059	\$1,475	\$1,696	\$460,741	\$4,688	\$7,210	\$477,869
LIBERTY	\$3,370	\$2,390	\$3,727	\$412,529	\$13,434	\$67,002	\$502,452
LINCOLN	\$420	\$0	\$0	\$46,160	\$0	\$980	\$47,560
LONG	\$0	\$0	\$3,605	\$97,979	\$0	\$5,288	\$106,872
LOWNDES	\$7,333	\$0	\$36,707	\$1,813,474	\$9,936	\$150,536	\$2,017,986
LUMPKIN	\$1,010	\$4,702	\$6,743	\$112,612	\$1,064	\$20,200	\$146,331
MACON	\$0	\$45	\$0	\$136,226	\$1,376	\$23,802	\$161,449
MADISON	\$1,132	\$30,710	\$3,348	\$105,909	\$3,783	\$58,470	\$203,352
MARION	\$0	\$730	\$580	\$8,359	\$0	\$1,625	\$11,294
MCDUFFIE	\$1,372	\$1,125	\$2,254	\$568,838	\$3,393	\$13,912	\$590,894
MCINTOSH	\$0	\$0	\$0	\$29,926	\$0	\$5,422	\$35,348
MERIWETHER	\$1,550	\$3,150	\$4,068	\$166,253	\$342	\$4,100	\$179,463
MILLER	\$136	\$75	\$0	\$50,135	\$0	\$2,200	\$52,546
MITCHELL	\$2,598	\$610	\$708	\$215,102	\$5,453	\$27,268	\$251,739
MONROE	\$3,360	\$198	\$4,147	\$121,541	\$1,103	\$38,805	\$169,154
MONTGOMERY	\$148	\$1,540	\$1,414	\$41,898	\$810	\$0	\$45,810
MORGAN	\$1,479	\$17,721	\$4,160	\$74,509	\$2,181	\$40,416	\$140,466
MURRAY	\$0	\$1,275	\$689	\$108,597	\$57	\$57,989	\$168,607
MUSCOGEE	\$221,410	\$349,502	\$430,203	\$3,455,355	\$130,479	\$176,284	\$4,763,232
NEWTON	\$33,855	\$145,709	\$131,391	\$1,334,504	\$13,745	\$214,915	\$1,874,119
OCONEE	\$264	\$448	\$2,028	\$49,338	\$2,088	\$42,521	\$96,687
OGLETHORPE	\$0	\$180	\$3,082	\$43,425	\$3,121	\$12,855	\$62,663
PAULDING	\$24,662	\$3,484	\$30,000	\$1,139,404	\$29,718	\$183,233	\$1,410,501
PEACH	\$17,459	\$278	\$26,029	\$396,278	\$20,820	\$27,699	\$488,563
PICKENS	\$780	\$9,451	\$0	\$23,364	\$1,100	\$39,106	\$73,801
PIERCE	\$0	\$0	\$0	\$75,136	\$0	\$23,604	\$98,740
PIKE	\$0	\$450	\$0	\$166,630	\$0	\$27,404	\$194,484
POLK	\$1,109	\$595	\$0	\$120,771	\$2,287	\$98,333	\$223,095
PULASKI	\$3,454	\$55	\$6,531	\$153,599	\$2,742	\$0	\$166,381
PUTNAM	\$13,571	\$379,054	\$32,364	\$326,007	\$1,168	\$18,795	\$770,959
QUITMAN	\$0	\$150	\$0	\$2,925	\$0	\$0	\$3,075

PAYMENTS BY CATEGORY FOR CHILDREN IN CHILDCARE

STATE FISCAL YEAR 2012

Annual Expenditures

COUNTY	APPLICANT SERVICES	TANF	TRANSITIONAL	LOW INCOME WORKING	Pre-K	FOSTER CARE SUPPLEMENTAL SUPERVISION	TOTAL
RABUN	\$0	\$375	\$0	\$21,994	\$48	\$12,950	\$35,367
RANDOLPH	\$0	\$410	\$246	\$5,350	\$0	\$0	\$6,006
RICHMOND	\$300,709	\$59,731	\$495,919	\$4,887,133	\$7,892	\$229,191	\$5,980,575
ROCKDALE	\$92,816	\$90,083	\$330,435	\$1,938,942	\$59,853	\$232,565	\$2,744,694
SCHLEY	\$0	\$0	\$0	\$7,235	\$0	\$0	\$7,235
SCREVEN	\$456	\$1,305	\$0	\$144,075	\$1,190	\$36,553	\$183,579
SEMINOLE	\$280	\$0	\$0	\$176,807	\$3,129	\$4,470	\$184,686
SPALDING	\$33,973	\$44,904	\$65,267	\$939,570	\$5,747	\$69,534	\$1,158,995
STEPHENS	\$2,297	\$25,400	\$11,492	\$255,493	\$2,585	\$30,465	\$327,732
STEWART	\$0	\$0	\$0	\$208	\$0	\$0	\$208
SUMTER	\$418	\$4,380	\$175	\$321,770	\$4,281	\$19,139	\$350,163
TALBOT	\$0	\$2,070	\$0	\$27,205	\$0	\$0	\$29,275
TALIAFERRO	\$0	\$0	\$0	\$14,400	\$0	\$0	\$14,400
TATTNALL	\$218	\$3,938	\$0	\$122,222	\$467	\$4,590	\$131,435
TAYLOR	\$0	\$350	\$0	\$0	\$0	\$0	\$350
TELFAIR	\$0	\$4,178	\$2,668	\$91,321	\$1,825	\$0	\$99,992
TERRELL	\$2,008	\$100	\$0	\$97,570	\$982	\$65	\$100,725
THOMAS	\$1,960	\$245	\$728	\$305,512	\$3,954	\$41,034	\$353,433
TIFT	\$0	\$0	\$0	\$505,444	\$4,523	\$79,085	\$589,052
TOOMBS	\$0	\$659	\$491	\$361,535	\$8,171	\$24,181	\$395,037
TOWNS	\$0	\$50	\$0	\$17,628	\$0	\$10,540	\$28,218
TREUTLEN	\$415	\$2,205	\$7,988	\$46,889	\$0	\$0	\$57,497
TROUP	\$18,247	\$14,954	\$40,127	\$1,100,615	\$22,572	\$36,247	\$1,232,762
TURNER	\$0	\$355	\$0	\$32,686	\$0	\$17,686	\$50,727
TWIGGS	\$325	\$0	\$35	\$14,178	\$1,840	\$7,235	\$23,613
UNION	\$325	\$997	\$0	\$8,032	\$0	\$20,023	\$29,377
UPSON	\$2,616	\$8,249	\$10,309	\$100,681	\$1,821	\$6,279	\$129,955
WALKER	\$2,118	\$1,225	\$3,741	\$111,333	\$3,281	\$85,858	\$207,556
WALTON	\$22,215	\$58,798	\$50,080	\$648,566	\$8,553	\$52,607	\$840,819
WARE	\$1,430	\$215	\$0	\$191,294	\$0	\$37,393	\$230,332
WARREN	\$0	\$45	\$0	\$45,931	\$2,976	\$0	\$48,952
WASHINGTON	\$74	\$2,042	\$9,416	\$250,842	\$397	\$17,983	\$280,754
WAYNE	\$1,433	\$510	\$4,511	\$119,745	\$3,392	\$15,309	\$144,900
WEBSTER	\$976	\$0	\$0	\$4,947	\$0	\$0	\$5,923
WHEELER	\$0	\$714	\$0	\$26,279	\$0	\$0	\$26,993
WHITE	\$69	\$4,057	\$459	\$74,527	\$1,065	\$39,680	\$119,857
WHITFIELD	\$3,306	\$4,314	\$15,829	\$211,962	\$15,699	\$96,538	\$347,648
WILCOX	\$0	\$450	\$0	\$21,020	\$1,081	\$0	\$22,551
WILKES	\$0	\$2,030	\$7,503	\$86,157	\$0	\$0	\$95,690
WILKINSON	\$5,243	\$0	\$6,003	\$67,139	\$2,146	\$4,716	\$85,247
WORTH	\$0	\$325	\$0	\$210,045	\$722	\$12,895	\$223,987
STATE TOTAL	\$6,710,591	\$7,057,544	\$13,699,969	\$118,736,074	\$2,039,073	\$11,110,699	\$159,353,950

SOURCE: COSTAR (Totals may differ due to rounding)

COSTAR

PROGRAM DESCRIPTION:

County Statistical Reporting System (COSTAR) is primarily to track purchase of services and Title IV-E expenditures.

DATA TABLE DESCRIPTION:

FOSTER CARE PER DIEM CLIENTS – Monthly Average Clients SFY 2012

FAMILY: A child who meets eligibility criteria for IV-E and placed in Family Foster Care.

SPECIALIZED: Foster Care provided to those children with significant care needs.

PER DIEM CLIENTS: Relate to the client with an entitlement code of 01 or entitlement code 13 where they receive services.

PROCEDURE:

The total number of per diem client counts average for the SFY by category for each county. The State Total is the sum of each category.

FOSTER CARE PER DIEM CLIENTS

STATE FISCAL YEAR 2012

Monthly Average Clients

COUNTY	FAMILY	SPECIALIZED
APPLING	9	0
ATKINSON	3	0
BACON	2	0
BAKER	1	0
BALDWIN	20	1
BANKS	4	0
BARROW	14	1
BARTOW	76	0
BEN HILL	1	0
BERRIEN	34	0
BIBB	67	3
BLECKLEY	0	0
BRANTLEY	12	0
BROOKS	10	0
BRYAN	4	0
BULLOCH	20	0
BURKE	10	0
BUTTS	29	0
CALHOUN	0	0
CAMDEN	24	0
CANDLER	5	0
CARROLL	33	1
CATOOSA	26	0
CHARLTON	5	0
CHATHAM	120	3
CHATTAHOOCHEE	1	0
CHATTOOGA	8	1
CHEROKEE	69	0
CLARKE	48	3
CLAY	0	0
CLAYTON	98	5
CLINCH	2	0
COBB	149	6
COFFEE	12	0
COLQUITT	55	1
COLUMBIA	5	0
COOK	27	0
COWETA	35	0
CRAWFORD	14	0
CRISP	17	0
DADE	18	0
DAWSON	1	0
DECATUR	18	1
DEKALB	114	10
DODGE	4	0
DOOLY	6	0
DOUGHERTY	28	0
DOUGLAS	43	1
EARLY	2	1
ECHOLS	1	0
EFFINGHAM	20	1

FOSTER CARE PER DIEM CLIENTS

STATE FISCAL YEAR 2012

Monthly Average Clients

COUNTY	FAMILY	SPECIALIZED
ELBERT	8	1
EMANUEL	6	0
EVANS	3	0
FANNIN	9	0
FAYETTE	5	1
FLOYD	57	2
FORSYTH	22	5
FRANKLIN	10	1
FULTON	90	7
GILMER	21	2
GLASCOCK	1	0
GLYNN	53	0
GORDON	48	2
GRADY	11	1
GREENE	7	0
GWINNETT	106	9
HABERSHAM	11	0
HALL	25	3
HANCOCK	1	0
HARALSON	30	0
HARRIS	3	0
HART	27	2
HEARD	3	0
HENRY	42	0
HOUSTON	32	6
IRWIN	1	0
JACKSON	32	0
JASPER	8	0
JEFF DAVIS	10	0
JEFFERSON	4	0
JENKINS	7	0
JOHNSON	6	1
JONES	23	0
LAMAR	14	0
LANIER	10	0
LAURENS	46	1
LEE	9	0
LIBERTY	30	0
LINCOLN	0	0
LONG	6	0
LOWNDES	67	0
LUMPKIN	15	3
MACON	16	0
MADISON	7	0
MARION	3	0
MCDUFFIE	7	0
MCINTOSH	3	0
MERIWETHER	16	1
MILLER	1	0
MITCHELL	11	1
MONROE	30	0

FOSTER CARE PER DIEM CLIENTS

STATE FISCAL YEAR 2012

Monthly Average Clients

COUNTY	FAMILY	SPECIALIZED
MONTGOMERY	0	0
MORGAN	7	0
MURRAY	17	1
MUSCOGEE	53	3
NEWTON	34	1
OCONEE	6	1
OGLETHORPE	0	0
PAULDING	49	1
PEACH	16	0
PICKENS	17	1
PIERCE	7	0
PIKE	8	0
POLK	47	4
PULASKI	0	0
PUTNAM	11	0
QUITMAN	0	0
RABUN	18	2
RANDOLPH	11	0
RICHMOND	48	2
ROCKDALE	40	2
SCHLEY	1	0
SCREVEN	2	0
SEMINOLE	1	0
SPALDING	36	1
STEPHENS	9	1
STEWART	0	0
SUMTER	10	0
TALBOT	4	0
TALIAFERRO	1	0
TATTNALL	2	0
TAYLOR	8	0
TELFAIR	6	2
TERRELL	3	0
THOMAS	34	0
TIFT	42	0
TOOMBS	8	1
TOWNS	6	0
TREUTLEN	2	0
TROUP	27	1
TURNER	4	0
TWIGGS	4	0
UNION	7	0
UPSON	40	1
WALKER	34	3
WALTON	29	2
WARE	21	0
WARREN	0	0
WASHINGTON	6	0
WAYNE	2	0
WEBSTER	0	0
WHEELER	1	0

FOSTER CARE PER DIEM CLIENTS

STATE FISCAL YEAR 2012

Monthly Average Clients

COUNTY	FAMILY	SPECIALIZED
WHITE	16	2
WHITFIELD	40	2
WILCOX	1	0
WILKES	0	0
WILKINSON	14	0
WORTH	10	0
STATE TOTAL	3,157	122

SOURCE: COSTAR (Total may differ due to rounding)

NOTE: These are clients for which a per diem is paid. Some Foster Care placements are unpaid.

COSTAR

PROGRAM DESCRIPTION:

County Statistical Reporting System (COSTAR) is primarily to track purchase of services and Title IV-E expenditures.

DATA TABLE DESCRIPTION:

FOSTER CARE ANNUAL EXPENDITURES SFY 2012

FAMILY: A child who meets eligibility criteria for IV-E and placed in Family Foster Care.

SPECIALIZED: Foster Care provided to those children with significant care needs.

PROCEDURE:

The total expenditure is one or more services for the SFY by category for each county. The State Total is the sum of each category.

FOSTER CARE ANNUAL EXPENDITURES

STATE FISCAL YEAR 2012

COUNTY	FAMILY	SPECIALIZED
APPLING	\$50,797	\$0
ATKINSON	\$16,066	\$0
BACON	\$13,796	\$0
BAKER	\$3,449	\$0
BALDWIN	\$109,913	\$8,058
BANKS	\$17,492	\$0
BARROW	\$60,505	\$9,204
BARTOW	\$358,646	\$3,900
BEN HILL	\$1,638	\$0
BERRIEN	\$177,701	\$4,399
BIBB	\$345,167	\$38,644
BLECKLEY	\$0	\$0
BRANTLEY	\$63,385	\$0
BROOKS	\$55,756	\$0
BRYAN	\$19,310	\$0
BULLOCH	\$102,758	\$0
BURKE	\$58,405	\$1,300
BUTTS	\$153,361	\$0
CALHOUN	\$1,016	\$0
CAMDEN	\$131,208	\$0
CANDLER	\$35,127	\$0
CARROLL	\$167,634	\$15,053
CATOOSA	\$118,880	\$4,734
CHARLTON	\$25,376	\$0
CHATHAM	\$657,793	\$35,816
CHATTAHOOCHEE	\$4,483	\$0
CHATTOOGA	\$32,595	\$11,476
CHEROKEE	\$325,028	\$2,580
CLARKE	\$207,634	\$11,594
CLAY	\$0	\$0
CLAYTON	\$543,534	\$65,143
CLINCH	\$8,928	\$0
COBB	\$671,399	\$83,567
COFFEE	\$59,630	\$0
COLQUITT	\$287,188	\$4,754
COLUMBIA	\$19,251	\$1,480
COOK	\$146,959	\$0
COWETA	\$191,166	\$446
CRAWFORD	\$81,341	\$0
CRISP	\$86,822	\$0
DADE	\$87,311	\$0
DAWSON	\$4,153	\$2,065
DECATUR	\$98,998	\$8,923
DEKALB	\$567,741	\$146,846
DODGE	\$23,138	\$0
DOOLY	\$28,359	\$0
DOUGHERTY	\$144,079	\$59
DOUGLAS	\$231,423	\$10,169
EARLY	\$9,059	\$6,720
ECHOLS	\$3,840	\$0
EFFINGHAM	\$103,103	\$6,339
ELBERT	\$46,134	\$6,130
EMANUEL	\$32,620	\$1,012
EVANS	\$18,086	\$0

FOSTER CARE ANNUAL EXPENDITURES

STATE FISCAL YEAR 2012

COUNTY	FAMILY	SPECIALIZED
FANNIN	\$43,329	\$0
FAYETTE	\$20,537	\$6,686
FLOYD	\$282,935	\$29,839
FORSYTH	\$109,140	\$42,219
FRANKLIN	\$51,714	\$4,421
FULTON	\$449,415	\$145,107
GILMER	\$109,737	\$28,623
GLASCOCK	\$6,307	\$0
GLYNN	\$274,685	\$0
GORDON	\$272,347	\$12,735
GRADY	\$56,900	\$14,205
GREENE	\$43,476	\$0
GWINNETT	\$545,968	\$101,665
HABERSHAM	\$59,649	\$520
HALL	\$94,532	\$34,493
HANCOCK	\$4,920	\$0
HARALSON	\$160,006	\$0
HARRIS	\$14,608	\$0
HART	\$121,627	\$18,832
HEARD	\$17,511	\$0
HENRY	\$232,477	\$0
HOUSTON	\$141,275	\$58,046
IRWIN	\$6,740	\$0
JACKSON	\$153,064	\$214
JASPER	\$39,738	\$0
JEFF DAVIS	\$61,407	\$0
JEFFERSON	\$15,682	\$0
JENKINS	\$45,197	\$0
JOHNSON	\$26,577	\$1,225
JONES	\$142,725	\$1,277
LAMAR	\$73,029	\$0
LANIER	\$44,398	\$0
LAURENS	\$258,132	\$2,444
LEE	\$43,211	\$0
LIBERTY	\$175,990	\$0
LINCOLN	\$164	\$0
LONG	\$29,795	\$0
LOWNDES	\$317,746	\$0
LUMPKIN	\$78,408	\$64,520
MACON	\$72,346	\$0
MADISON	\$38,497	\$0
MARION	\$11,846	\$0
MCDUFFIE	\$41,264	\$0
MCINTOSH	\$14,785	\$0
MERIWETHER	\$83,757	\$11,517
MILLER	\$1,587	\$0
MITCHELL	\$63,711	\$8,428
MONROE	\$160,846	\$0
MONTGOMERY	\$0	\$5,011
MORGAN	\$39,956	\$0
MURRAY	\$82,025	\$12,125
MUSCOGEE	\$265,422	\$25,714
NEWTON	\$169,132	\$9,329
OCONEE	\$34,177	\$8,132

FOSTER CARE ANNUAL EXPENDITURES

STATE FISCAL YEAR 2012

COUNTY	FAMILY	SPECIALIZED
OGLETHORPE	\$45	\$0
PAULDING	\$243,513	\$8,670
PEACH	\$87,489	\$0
PICKENS	\$79,302	\$7,020
PIERCE	\$30,483	\$0
PIKE	\$46,493	\$0
POLK	\$240,730	\$27,584
PULASKI	\$647	\$0
PUTNAM	\$54,109	\$930
QUITMAN	\$0	\$0
RABUN	\$83,262	\$23,288
RANDOLPH	\$60,700	\$0
RICHMOND	\$230,941	\$27,691
ROCKDALE	\$207,145	\$24,508
SCHLEY	\$3,775	\$0
SCREVEN	\$9,596	\$0
SEMINOLE	\$2,618	\$1,027
SPALDING	\$192,771	\$3,242
STEPHENS	\$51,675	\$6,302
STEWART	\$177	\$0
SUMTER	\$53,078	\$3,798
TALBOT	\$18,879	\$0
TALIAFERRO	\$1,209	\$0
TATTNALL	\$10,012	\$0
TAYLOR	\$45,336	\$0
TELFAIR	\$31,920	\$22,535
TERRELL	\$18,272	\$0
THOMAS	\$182,633	\$0
TIFT	\$198,817	\$1,172
TOOMBS	\$36,758	\$11,807
TOWNS	\$28,640	\$0
TREUTLEN	\$14,781	\$0
TROUP	\$137,219	\$10,398
TURNER	\$13,227	\$0
TWIGGS	\$23,350	\$0
UNION	\$34,849	\$0
UPSON	\$200,967	\$4,004
WALKER	\$175,311	\$36,431
WALTON	\$184,629	\$7,733
WARE	\$116,289	\$0
WARREN	\$617	\$0
WASHINGTON	\$27,476	\$0
WAYNE	\$10,246	\$0
WEBSTER	\$0	\$0
WHEELER	\$5,144	\$0
WHITE	\$70,962	\$47,221
WHITFIELD	\$197,288	\$16,308
WILCOX	\$4,153	\$0
WILKES	\$425	\$0
WILKINSON	\$94,836	\$0
WORTH	\$41,313	\$0
STATE TOTAL	\$16,117,728	\$1,429,402

SORUCE: COSTAR (Total may differ due to rounding)

COSTAR

PROGRAM DESCRIPTION:

County Statistical Reporting System (COSTAR) is primarily to track purchase of services and Title IV-E expenditures.

DATA TABLE DESCRIPTION:

FAMILY PRESERVATION SERVICES SFY 2012

CHILD AND FAMILY ASSESSMENT: To provide a comprehensive assessment strategy for all children entering foster care as well as their families.

EARLY INTERVENTION: To provide Community-Based Prevention and Early Intervention activities to afford children a safe, stable and supportive family setting by promoting the well being of the family.

HOMESTEAD: To assure safety for children with Family Preservation or Permanency cases that are at-risk of unnecessary foster care or ready for reunification by providing the following services: Counseling and Relative/Non-Relative Assessment and Family Visitation Services (SafeCare).

PARENT AIDE: To provide parenting education, training and support to families through group classes and in-home visitation.

PREVENTION OF OUT-OF-HOME PLACEMENT: To reduce risk factors contributing to child maltreatment to ensure the protection and safety of a child.

PROCEDURE:

The total number of client counts average for the SFY by category for each county. The State Total is the sum of each category.

FAMILY PRESERVATION SERVICES

STATE FISCAL YEAR 2012

COUNTY	CHILD AND FAMILY ASSESSMENT	EARLY INTERVENTION	HOMESTEAD	PARENT AIDE	PREVENTION OF OUT-OF-HOME PLACEMENT
APPLING	3	0	110	10	36
ATKINSON	10	5	21	16	30
BACON	9	0	86	21	118
BAKER	5	0	0	0	2
BALDWIN	37	364	42	102	110
BANKS	2	12	70	3	71
BARROW	36	44	27	26	152
BARTOW	119	112	185	322	787
BEN HILL	5	0	41	21	14
BERRIEN	9	1	72	26	68
BIBB	241	6	254	444	815
BLECKLEY	0	6	15	33	3
BRANTLEY	32	0	80	7	83
BROOKS	9	11	37	57	69
BRYAN	11	0	0	0	86
BULLOCH	26	0	0	0	341
BURKE	17	0	7	1	50
BUTTS	63	23	28	30	739
CALHOUN	0	0	19	0	6
CAMDEN	43	28	17	7	203
CANDLER	0	0	3	0	30
CARROLL	189	1,026	362	86	927
CATOOSA	105	52	63	108	311
CHARLTON	19	0	0	5	19
CHATHAM	340	0	76	151	1,255
CHATTAHOOCHEE	3	0	0	0	4
CHATTOOGA	43	98	123	254	170
CHEROKEE	97	31	107	102	312
CLARKE	110	216	94	72	333
CLAY	0	0	0	0	8
CLAYTON	171	180	455	107	784
CLINCH	5	2	3	17	23
COBB	211	507	267	191	259
COFFEE	33	0	66	44	77
COLQUITT	75	0	178	84	765
COLUMBIA	20	0	0	0	114
COOK	27	3	42	45	117
COWETA	79	172	285	151	820
CRAWFORD	35	0	18	2	200
CRISP	29	3	25	57	106
DADE	40	44	124	41	236
DAWSON	5	0	31	57	14
DECATUR	51	0	29	44	181
DEKALB	1,160	444	2,293	1,529	2,442
DODGE	0	1	83	3	16
DOOLY	10	0	0	1	31
DOUGHERTY	78	37	153	193	367
DOUGLAS	220	112	188	46	111
EARLY	6	0	8	0	13
ECHOLS	2	2	39	9	13
EFFINGHAM	44	0	172	0	227
ELBERT	22	12	21	13	28

FAMILY PRESERVATION SERVICES

STATE FISCAL YEAR 2012

COUNTY	CHILD AND FAMILY ASSESSMENT	EARLY INTERVENTION	HOMESTEAD	PARENT AIDE	PREVENTION OF OUT-OF-HOME PLACEMENT
EMANUEL	0	0	0	18	54
EVANS	4	0	17	12	30
FANNIN	39	8	12	15	67
FAYETTE	18	92	45	15	108
FLOYD	146	338	254	377	213
FORSYTH	45	46	38	187	175
FRANKLIN	12	0	24	27	39
FULTON	309	76	157	83	3,366
GILMER	55	36	233	63	109
GLASCOCK	0	0	8	0	32
GLYNN	101	0	13	3	362
GORDON	143	78	216	147	286
GRADY	16	17	20	47	95
GREENE	3	10	24	17	14
GWINNETT	430	3	9	64	498
HABERSHAM	12	114	165	33	149
HALL	79	101	16	472	243
HANCOCK	2	2	0	0	2
HARALSON	57	54	19	109	157
HARRIS	5	0	3	0	6
HART	32	2	38	23	82
HEARD	10	210	93	53	94
HENRY	69	236	892	91	1,902
HOUSTON	41	6	118	24	248
IRWIN	2	0	8	4	4
JACKSON	55	15	31	14	141
JASPER	22	16	85	39	40
JEFF DAVIS	3	3	36	35	29
JEFFERSON	1	1	6	2	68
JENKINS	11	0	7	6	28
JOHNSON	0	0	2	0	12
JONES	100	27	191	21	262
LAMAR	36	29	144	47	469
LANIER	13	3	65	19	37
LAURENS	2	0	5	5	24
LEE	32	0	34	8	102
LIBERTY	22	0	4	49	153
LINCOLN	1	0	0	0	19
LONG	11	0	0	0	45
LOWNDES	98	43	329	222	487
LUMPKIN	27	16	99	28	90
MACON	15	3	20	13	35
MADISON	11	7	1	1	63
MARION	7	0	1	0	2
MCDUFFIE	7	5	25	31	64
MCINTOSH	17	0	0	0	15
MERIWETHER	21	17	43	24	156
MILLER	16	0	20	7	23
MITCHELL	37	0	131	72	91
MONROE	105	48	76	25	264
MONTGOMERY	0	0	33	4	6
MORGAN	28	12	76	23	40

FAMILY PRESERVATION SERVICES

STATE FISCAL YEAR 2012

COUNTY	CHILD AND FAMILY ASSESSMENT	EARLY INTERVENTION	HOMESTEAD	PARENT AIDE	PREVENTION OF OUT-OF-HOME PLACEMENT
MURRAY	84	47	2	32	155
MUSCOGEE	92	0	1	0	56
NEWTON	90	7	80	15	127
OCONEE	16	30	136	20	65
OGLETHORPE	9	1	9	11	25
PAULDING	34	160	66	49	55
PEACH	37	34	267	13	233
PICKENS	25	95	239	76	220
PIERCE	22	0	46	5	101
PIKE	21	1	53	37	191
POLK	48	0	12	76	563
PULASKI	0	0	7	29	12
PUTNAM	37	23	32	80	106
QUITMAN	0	0	0	0	2
RABUN	29	50	107	0	247
RANDOLPH	0	0	0	0	7
RICHMOND	186	80	127	33	601
ROCKDALE	127	79	60	16	274
SCHLEY	6	8	3	25	15
SCREVEN	0	0	14	9	67
SEMINOLE	14	0	19	0	31
SPALDING	38	130	254	117	516
STEPHENS	12	8	87	17	82
STEWART	0	0	0	0	4
SUMTER	46	0	0	0	58
TALBOT	3	0	0	0	4
TALIAFERRO	3	0	0	0	3
TATTNALL	1	0	1	5	8
TAYLOR	15	0	0	2	15
TELFAIR	5	11	69	28	24
TERRELL	10	0	11	25	27
THOMAS	94	23	84	110	172
TIFT	31	7	233	75	200
TOOMBS	0	3	8	1	20
TOWNS	8	0	0	4	30
TREUTLEN	0	0	1	0	9
TROUP	75	72	329	193	984
TURNER	5	0	27	19	19
TWIGGS	21	0	1	0	43
UNION	11	0	6	0	42
UPSON	53	23	122	88	980
WALKER	72	49	15	90	221
WALTON	64	57	14	60	115
WARE	21	13	74	3	70
WARREN	4	0	32	0	6
WASHINGTON	17	3	12	0	57
WAYNE	2	0	18	24	39
WEBSTER	1	0	0	0	0
WHEELER	1	4	14	16	6
WHITE	18	6	20	11	81
WHITFIELD	156	124	27	65	336
WILCOX	0	0	0	17	7

FAMILY PRESERVATION SERVICES

STATE FISCAL YEAR 2012

COUNTY	CHILD AND FAMILY ASSESSMENT	EARLY INTERVENTION	HOMESTEAD	PARENT AIDE	PREVENTION OF OUT-OF-HOME PLACEMENT
WILKES	0	6	0	0	9
WILKINSON	39	0	2	0	40
WORTH	39	4	84	86	118
STATE TOTAL	7,976	6,386	13,130	8,699	32,694

SOURCE: COSTAR

COSTAR

PROGRAM DESCRIPTION:

County Statistical Reporting System (COSTAR) is primarily to track purchase of services and Title IV-E expenditures.

DATA TABLE DESCRIPTION:

FAMILY PRESERVATION SERVICES EXPENDITURES SFY 2012

CHILD AND FAMILY ASSESSMENT: To provide a comprehensive assessment strategy for all children entering foster care as well as their families.

EARLY INTERVENTION: To provide Community-Based Prevention and Early Intervention activities to afford children a safe, stable and supportive family setting by promoting the well being of the family.

HOMESTEAD: To assure safety for children with Family Preservation or Permanency cases that are at-risk of unnecessary foster care or ready for reunification by providing the following services: Counseling and Relative/Non-Relative Assessment and Family Visitation Services (SafeCare).

PARENT AIDE: To provide parenting education, training and support to families through group classes and in-home visitation.

PREVENTION OF OUT-OF-HOME PLACEMENT: To reduce risk factors contributing to child maltreatment to ensure the protection and safety of a child.

PROCEDURE:

The total expenditure is one or more services for the SFY by category for each county. The State Total is the sum of each category.

FAMILY PRESERVATION SERVICES EXPENDITURES

STATE FISCAL YEAR 2012

COUNTY	CHILD AND FAMILY ASSESSMENT	EARLY INTERVENTION	HOMESTEAD	PARENT AIDE	PREVENTION OF OUT-OF-HOME PLACEMENT
APPLING	\$1,500	\$0	\$13,595	\$323	\$4,949
ATKINSON	\$8,400	\$409	\$5,626	\$3,164	\$8,891
BACON	\$3,950	\$0	\$14,137	\$1,893	\$8,100
BAKER	\$1,650	\$0	\$0	\$0	\$677
BALDWIN	\$17,880	\$26,937	\$10,653	\$15,412	\$20,710
BANKS	\$900	\$706	\$14,046	\$763	\$11,106
BARROW	\$19,800	\$9,169	\$8,958	\$4,665	\$23,728
BARTOW	\$54,790	\$3,929	\$35,684	\$25,136	\$115,719
BEN HILL	\$1,350	\$0	\$6,598	\$2,533	\$2,196
BERRIEN	\$10,200	\$257	\$31,353	\$6,755	\$23,357
BIBB	\$82,400	\$137	\$57,755	\$67,875	\$216,129
BLECKLEY	\$0	\$185	\$2,179	\$3,467	\$726
BRANTLEY	\$13,450	\$0	\$16,214	\$759	\$11,067
BROOKS	\$12,300	\$2,120	\$12,319	\$18,092	\$16,415
BRYAN	\$5,150	\$0	\$0	\$0	\$4,840
BULLOCH	\$10,050	\$0	\$0	\$0	\$13,150
BURKE	\$6,700	\$0	\$1,740	\$310	\$3,292
BUTTS	\$38,525	\$1,827	\$8,225	\$6,350	\$100,430
CALHOUN	\$0	\$0	\$2,270	\$0	\$1,523
CAMDEN	\$23,950	\$2,742	\$6,335	\$1,776	\$26,172
CANDLER	\$0	\$0	\$412	\$0	\$2,942
CARROLL	\$57,100	\$56,908	\$52,400	\$11,698	\$118,081
CATOOSA	\$34,200	\$2,548	\$7,506	\$8,794	\$32,867
CHARLTON	\$7,180	\$0	\$0	\$1,099	\$3,026
CHATHAM	\$124,050	\$0	\$16,017	\$14,712	\$170,963
CHATTAHOOCHEE	\$1,800	\$0	\$0	\$0	\$140
CHATTOOGA	\$15,250	\$3,681	\$19,288	\$18,827	\$7,910
CHEROKEE	\$44,480	\$2,320	\$19,590	\$10,276	\$90,132
CLARKE	\$59,150	\$46,572	\$26,617	\$18,505	\$94,348
CLAY	\$0	\$0	\$0	\$0	\$576
CLAYTON	\$81,300	\$47,120	\$139,950	\$29,715	\$149,576
CLINCH	\$6,800	\$230	\$771	\$4,200	\$2,692
COBB	\$83,684	\$36,291	\$49,333	\$33,565	\$81,657
COFFEE	\$18,800	\$0	\$14,389	\$3,693	\$15,240
COLQUITT	\$25,900	\$0	\$23,974	\$4,749	\$73,010
COLUMBIA	\$7,050	\$0	\$0	\$0	\$8,758
COOK	\$12,450	\$326	\$10,082	\$7,436	\$14,347
COWETA	\$45,985	\$11,823	\$57,048	\$18,744	\$117,112
CRAWFORD	\$25,488	\$0	\$6,736	\$204	\$41,761
CRISP	\$11,700	\$284	\$8,753	\$7,785	\$12,284
DADE	\$12,600	\$2,229	\$16,994	\$5,354	\$31,006
DAWSON	\$2,700	\$0	\$4,606	\$4,327	\$1,300
DECATUR	\$14,700	\$0	\$9,845	\$5,064	\$29,800
DEKALB	\$336,950	\$7,200	\$267,735	\$51,837	\$345,334
DODGE	\$0	\$93	\$17,973	\$815	\$2,193
DOOLY	\$4,150	\$0	\$0	\$200	\$7,851
DOUGHERTY	\$49,181	\$2,665	\$36,814	\$26,949	\$66,198
DOUGLAS	\$68,950	\$10,448	\$47,605	\$6,742	\$48,441
EARLY	\$2,000	\$0	\$1,610	\$0	\$2,805
ECHOLS	\$4,100	\$119	\$13,952	\$1,461	\$3,720
EFFINGHAM	\$22,689	\$0	\$35,171	\$0	\$26,884
ELBERT	\$11,000	\$681	\$4,673	\$1,251	\$3,771

FAMILY PRESERVATION SERVICES EXPENDITURES

STATE FISCAL YEAR 2012

COUNTY	CHILD AND FAMILY ASSESSMENT	EARLY INTERVENTION	HOMESTEAD	PARENT AIDE	PREVENTION OF OUT-OF-HOME PLACEMENT
EMANUEL	\$0	\$0	\$0	\$5,725	\$11,478
EVANS	\$1,500	\$0	\$2,517	\$4,650	\$5,471
FANNIN	\$12,750	\$682	\$5,390	\$1,091	\$23,939
FAYETTE	\$12,350	\$12,759	\$12,905	\$4,675	\$20,725
FLOYD	\$72,610	\$12,950	\$42,695	\$34,696	\$30,549
FORSYTH	\$20,350	\$2,197	\$5,042	\$12,591	\$28,596
FRANKLIN	\$4,850	\$0	\$1,971	\$2,088	\$4,036
FULTON	\$171,600	\$6,596	\$44,941	\$17,620	\$447,578
GILMER	\$19,100	\$1,468	\$46,748	\$5,041	\$23,817
GLASCOCK	\$0	\$0	\$2,001	\$0	\$4,079
GLYNN	\$55,100	\$0	\$4,173	\$450	\$42,258
GORDON	\$44,700	\$2,499	\$25,940	\$11,662	\$53,985
GRADY	\$5,150	\$1,321	\$7,778	\$3,551	\$9,560
GREENE	\$1,800	\$1,171	\$10,298	\$3,211	\$3,357
GWINNETT	\$134,375	\$80	\$2,446	\$15,139	\$78,038
HABERSHAM	\$5,400	\$4,431	\$16,972	\$2,042	\$10,159
HALL	\$32,550	\$4,298	\$2,742	\$31,326	\$30,331
HANCOCK	\$750	\$140	\$0	\$0	\$310
HARALSON	\$22,210	\$3,268	\$4,892	\$22,892	\$25,570
HARRIS	\$2,750	\$0	\$533	\$0	\$3,311
HART	\$15,650	\$296	\$7,384	\$2,787	\$15,028
HEARD	\$3,950	\$14,077	\$12,722	\$5,511	\$12,140
HENRY	\$44,930	\$28,381	\$202,464	\$29,907	\$216,714
HOUSTON	\$38,100	\$1,033	\$41,187	\$8,142	\$24,488
IRWIN	\$3,150	\$0	\$3,435	\$1,617	\$1,965
JACKSON	\$18,325	\$1,603	\$11,156	\$5,082	\$25,145
JASPER	\$12,975	\$2,327	\$25,810	\$8,316	\$12,006
JEFF DAVIS	\$1,600	\$272	\$9,970	\$8,594	\$7,691
JEFFERSON	\$600	\$75	\$1,244	\$205	\$6,508
JENKINS	\$2,425	\$0	\$986	\$519	\$3,931
JOHNSON	\$0	\$0	\$875	\$0	\$2,871
JONES	\$34,440	\$1,323	\$35,898	\$2,540	\$51,175
LAMAR	\$10,800	\$1,808	\$32,030	\$4,983	\$51,109
LANIER	\$14,800	\$526	\$24,040	\$4,047	\$12,955
LAURENS	\$900	\$0	\$860	\$1,275	\$10,593
LEE	\$10,900	\$0	\$4,128	\$452	\$19,743
LIBERTY	\$9,350	\$0	\$826	\$3,132	\$20,276
LINCOLN	\$2,400	\$0	\$0	\$0	\$795
LONG	\$3,850	\$0	\$0	\$0	\$6,154
LOWNDES	\$57,850	\$6,345	\$86,079	\$50,513	\$130,122
LUMPKIN	\$11,100	\$712	\$10,129	\$2,257	\$15,546
MACON	\$6,650	\$784	\$5,248	\$2,277	\$6,439
MADISON	\$4,135	\$538	\$150	\$165	\$7,294
MARION	\$2,700	\$0	\$390	\$0	\$120
MCDUFFIE	\$3,000	\$411	\$2,097	\$4,256	\$8,781
MCINTOSH	\$5,850	\$0	\$0	\$0	\$1,288
MERIWETHER	\$12,075	\$1,005	\$10,648	\$4,906	\$32,178
MILLER	\$4,800	\$0	\$4,080	\$1,915	\$7,239
MITCHELL	\$9,650	\$0	\$24,612	\$4,777	\$8,162
MONROE	\$21,700	\$3,395	\$20,105	\$6,260	\$35,887
MONTGOMERY	\$0	\$0	\$7,283	\$565	\$1,256
MORGAN	\$12,000	\$1,201	\$26,309	\$5,750	\$11,932

FAMILY PRESERVATION SERVICES EXPENDITURES

STATE FISCAL YEAR 2012

COUNTY	CHILD AND FAMILY ASSESSMENT	EARLY INTERVENTION	HOMESTEAD	PARENT AIDE	PREVENTION OF OUT-OF-HOME PLACEMENT
MURRAY	\$23,550	\$4,263	\$103	\$3,368	\$20,611
MUSCOGEE	\$42,400	\$0	\$390	\$0	\$13,975
NEWTON	\$40,100	\$748	\$28,544	\$4,816	\$36,230
OCONEE	\$13,550	\$3,629	\$47,985	\$7,288	\$19,474
OGLETHORPE	\$3,300	\$42	\$2,137	\$1,846	\$6,017
PAULDING	\$15,150	\$8,105	\$6,197	\$5,187	\$17,901
PEACH	\$15,807	\$2,175	\$77,170	\$1,308	\$52,015
PICKENS	\$13,950	\$5,138	\$27,887	\$4,262	\$35,953
PIERCE	\$11,000	\$0	\$4,792	\$876	\$11,341
PIKE	\$8,450	\$80	\$18,120	\$8,551	\$33,543
POLK	\$17,250	\$0	\$3,185	\$14,081	\$47,686
PULASKI	\$0	\$0	\$849	\$2,106	\$2,913
PUTNAM	\$14,000	\$1,865	\$8,340	\$9,817	\$36,071
QUITMAN	\$0	\$0	\$0	\$0	\$455
RABUN	\$12,563	\$2,635	\$12,871	\$0	\$25,926
RANDOLPH	\$0	\$0	\$0	\$0	\$582
RICHMOND	\$69,000	\$5,337	\$27,006	\$8,252	\$54,262
ROCKDALE	\$38,910	\$4,322	\$8,869	\$806	\$28,631
SCHLEY	\$2,150	\$426	\$1,001	\$4,668	\$3,385
SCREVEN	\$0	\$0	\$1,870	\$1,286	\$6,652
SEMINOLE	\$4,000	\$0	\$3,087	\$0	\$7,355
SPALDING	\$26,250	\$15,455	\$62,827	\$19,909	\$119,470
STEPHENS	\$6,450	\$849	\$16,439	\$3,006	\$16,015
STEWART	\$0	\$0	\$0	\$0	\$304
SUMTER	\$13,825	\$0	\$0	\$0	\$6,143
TALBOT	\$900	\$0	\$0	\$0	\$1,650
TALIAFERRO	\$2,100	\$0	\$0	\$0	\$416
TATTNALL	\$700	\$0	\$350	\$2,825	\$706
TAYLOR	\$4,050	\$0	\$0	\$219	\$4,633
TELFAIR	\$1,550	\$225	\$10,151	\$2,212	\$5,743
TERRELL	\$2,650	\$0	\$3,236	\$2,224	\$6,445
THOMAS	\$28,130	\$1,319	\$19,060	\$7,992	\$35,632
TIFT	\$31,640	\$834	\$85,145	\$14,081	\$64,353
TOOMBS	\$0	\$410	\$1,759	\$650	\$8,626
TOWNS	\$3,350	\$0	\$0	\$317	\$4,932
TREUTLEN	\$0	\$0	\$360	\$0	\$1,915
TROUP	\$34,350	\$5,394	\$51,181	\$25,691	\$128,513
TURNER	\$3,890	\$0	\$7,386	\$3,172	\$7,383
TWIGGS	\$5,100	\$0	\$350	\$0	\$5,653
UNION	\$4,225	\$0	\$795	\$0	\$6,454
UPSON	\$19,900	\$911	\$27,472	\$15,769	\$118,635
WALKER	\$27,800	\$2,311	\$1,582	\$17,005	\$53,355
WALTON	\$31,950	\$6,872	\$5,975	\$20,824	\$20,260
WARE	\$10,000	\$967	\$11,037	\$270	\$7,080
WARREN	\$1,950	\$0	\$4,895	\$0	\$706
WASHINGTON	\$5,250	\$207	\$2,726	\$0	\$3,206
WAYNE	\$900	\$0	\$1,721	\$2,211	\$4,755
WEBSTER	\$300	\$0	\$0	\$0	\$0
WHEELER	\$350	\$96	\$3,173	\$1,886	\$1,350
WHITE	\$6,750	\$241	\$3,152	\$522	\$17,130
WHITFIELD	\$50,450	\$5,552	\$5,158	\$8,299	\$41,746
WILCOX	\$0	\$0	\$0	\$1,505	\$1,675

FAMILY PRESERVATION SERVICES EXPENDITURES

STATE FISCAL YEAR 2012

COUNTY	CHILD AND FAMILY ASSESSMENT	EARLY INTERVENTION	HOMESTEAD	PARENT AIDE	PREVENTION OF OUT-OF-HOME PLACEMENT
WILKES	\$0	\$500	\$0	\$0	\$865
WILKINSON	\$10,350	\$0	\$700	\$0	\$5,849
WORTH	\$14,200	\$185	\$15,147	\$8,434	\$30,567
STATE TOTAL	\$3,199,320	\$481,015	\$2,631,839	\$1,044,011	\$5,037,724

SORUCE: COSTAR (Total may differ due to rounding)

CHILD PROTECTIVE SERVICES (CPS)

CHILD PROTECTIVE SERVICES

PROGRAM DESCRIPTION:

Child Protective Services (CPS) staff investigates report of child abuse or neglect and provides services to protect the child and strengthen the family.

DATA TABLE DESCRIPTION:

GEORGIA CHILD PROTECTIVE SERVICES SFY 2012

SUBSTANTIATED: An investigation disposition by a CPS investigator concludes, based on a preponderance of evidence collected, that the allegation of mistreatment, as defined by state law and CPS procedure requirements, is true.

UNSUBSTANTIATED: An investigation disposition by a CPS investigator concludes that, under state law and CPS procedure requirements, there is either no collected evidence or less than a preponderance of evidence to substantiate that maltreatment occurred.

SCREENED-OUT REFERRAL: A report to CPS that does not contain the components of a CPS report. The report is logged, documented on Form 453 (Child Abuse/Neglect Worksheet) and an IDS form (Internal Data System) is completed. A referral to available resources may be made.

DIVERSIONS: The process for determining need and providing support without formal CPS intervention.

PROCEDURE:

The number of cases is total for the SFY by category for each county. Total Cases Investigated is the sum of substantiated cases, plus unsubstantiated cases. The number of reports (Screened-Out and Diversions) is total for the SFY by category for each county. Total Reports is the sum of Total Cases Investigated plus Screened-Out and Diversions. The State Total is the sum of each category.

GEORGIA CHILD PROTECTIVE SERVICES

STATE FISCAL YEAR 2012

COUNTY	SUBSTANTIATED		UNSUBSTANTIATED		TOTAL CASES INVESTIGATED	SCREENED OUT	DIVERSIONS	TOTAL REPORTS
	OPEN	CLOSED	OPEN	CLOSED				
APPLING	16	12	3	39	70	34	71	175
ATKINSON	12	11	1	21	45	7	34	86
BACON	17	14	1	27	59	14	42	115
BAKER	1	2	2	5	10	3	6	19
BALDWIN	27	67	11	88	193	87	142	422
BANKS	11	13	4	25	53	10	52	115
BARROW	37	38	6	103	184	388	344	916
BARTOW	74	83	12	146	315	264	309	888
BEN HILL	8	16	1	34	59	9	53	121
BERRIEN	21	27	4	53	105	49	99	253
BIBB	261	120	25	301	707	73	346	1,126
BLECKLEY	7	13	0	32	52	28	43	123
BRANTLEY	19	20	6	64	109	33	123	265
BROOKS	20	11	3	35	69	9	50	128
BRYAN	11	7	1	25	44	17	22	83
BULLOCH	28	12	1	53	94	22	36	152
BURKE	14	11	1	43	69	48	80	197
BUTTS	41	18	1	79	139	37	32	208
CALHOUN	3	2	0	14	19	5	21	45
CAMDEN	34	38	3	85	160	90	110	360
CANDLER	11	10	0	18	39	11	43	93
CARROLL	101	74	7	178	360	544	84	988
CATOOSA	40	26	3	107	176	198	154	528
CHARLTON	6	22	2	44	74	12	74	160
CHATHAM	208	171	8	419	806	163	280	1,249
CHATTAHOOCHEE	16	16	0	16	48	24	20	92
CHATTOOGA	50	16	4	82	152	40	94	286
CHEROKEE	171	126	14	382	693	336	530	1,559
CLARKE	55	67	7	218	347	237	392	976
CLAY	4	0	1	2	7	1	16	24
CLAYTON	186	162	36	273	657	275	636	1,568
CLINCH	9	13	0	21	43	8	17	68
COBB	264	266	47	829	1,406	978	1,790	4,174
COFFEE	30	28	5	79	142	13	156	311
COLQUITT	104	44	13	87	248	55	176	479
COLUMBIA	39	53	1	117	210	206	224	640
COOK	16	19	0	55	90	44	103	237
COWETA	92	82	18	210	402	72	148	622
CRAWFORD	29	6	4	10	49	10	32	91
CRISP	32	26	0	70	128	13	78	219
DADE	35	11	7	29	82	26	20	128
DAWSON	24	6	0	49	79	54	94	227
DECATUR	49	19	7	107	182	43	95	320
DEKALB	354	367	118	674	1,513	448	722	2,683
DODGE	13	15	0	34	62	31	54	147
DOOLY	9	6	3	15	33	29	36	98
DOUGHERTY	88	82	25	364	559	174	268	1,001
DOUGLAS	84	110	28	261	483	315	445	1,243
EARLY	2	4	0	19	25	15	42	82
ECHOLS	6	3	1	8	18	5	21	44
EFFINGHAM	43	20	6	39	108	49	50	207
ELBERT	23	10	2	23	58	18	42	118
EMANUEL	18	8	3	33	62	40	74	176
EVANS	10	4	1	9	24	8	40	72
FANNIN	32	20	2	31	85	50	69	204
FAYETTE	16	11	7	37	71	219	199	489
FLOYD	115	125	35	278	553	467	476	1,496
FORSYTH	74	91	15	161	341	152	411	904
FRANKLIN	23	16	0	18	57	36	78	171
FULTON	359	462	93	940	1,854	2,164	1,649	5,667
GILMER	40	8	7	70	125	166	155	446

GEORGIA CHILD PROTECTIVE SERVICES

STATE FISCAL YEAR 2012

COUNTY	SUBSTANTIATED		UNSUBSTANTIATED		TOTAL CASES INVESTIGATED	SCREENED OUT	DIVERSIONS	TOTAL REPORTS
	OPEN	CLOSED	OPEN	CLOSED				
GLASCOCK	2	4	0	3	9	14	19	42
GLYNN	83	35	7	96	221	54	189	464
GORDON	58	33	2	113	206	37	162	405
GRADY	17	22	3	65	107	28	77	212
GREENE	7	4	0	11	22	31	47	100
GWINNETT	183	217	22	402	824	856	1,722	3,402
HABERSHAM	29	16	3	42	90	54	102	246
HALL	132	93	9	327	561	203	598	1,362
HANCOCK	1	2	0	8	11	5	16	32
HARALSON	48	10	2	116	176	108	172	456
HARRIS	9	5	1	12	27	24	29	80
HART	32	16	1	20	69	25	68	162
HEARD	19	5	5	24	53	80	42	175
HENRY	84	121	11	379	595	715	766	2,076
HOUSTON	68	87	3	29	187	59	190	436
IRWIN	4	10	1	15	30	23	35	88
JACKSON	41	49	3	71	164	277	236	677
JASPER	18	5	1	10	34	10	42	86
JEFF DAVIS	15	11	0	30	56	38	64	158
JEFFERSON	8	8	3	16	35	18	32	85
JENKINS	8	6	1	8	23	7	22	52
JOHNSON	1	3	0	18	22	15	24	61
JONES	45	34	3	47	129	25	42	196
LAMAR	27	14	6	42	89	23	34	146
LANIER	15	16	2	32	65	22	60	147
LAURENS	19	18	2	116	155	68	127	350
LEE	17	26	3	80	126	33	65	224
LIBERTY	35	75	4	191	305	173	141	619
LINCOLN	1	3	0	11	15	6	34	55
LONG	6	7	2	25	40	33	30	103
LOWNDES	112	85	24	236	457	89	211	757
LUMPKIN	36	27	5	35	103	19	40	162
MACON	16	10	1	32	59	39	69	167
MADISON	16	11	0	35	62	77	125	264
MARION	7	5	0	14	26	18	15	59
MCDUFFIE	11	13	0	38	62	64	123	249
MCINTOSH	10	4	2	12	28	7	26	61
MERIWETHER	21	18	1	36	76	57	37	170
MILLER	8	2	1	17	28	6	20	54
MITCHELL	16	13	3	41	73	46	92	211
MONROE	22	12	6	85	125	19	78	222
MONTGOMERY	6	10	0	10	26	17	26	69
MORGAN	19	6	3	26	54	48	72	174
MURRAY	27	24	8	63	122	36	162	320
MUSCOGEE	119	93	34	278	524	382	601	1,507
NEWTON	72	52	11	116	251	141	453	845
OCONEE	24	12	3	38	77	45	67	189
OGLETHORPE	4	8	0	10	22	45	35	102
PAULDING	72	68	10	192	342	531	414	1,287
PEACH	43	25	4	38	110	8	20	138
PICKENS	46	15	0	10	71	88	150	309
PIERCE	17	20	2	54	93	32	88	213
PIKE	23	5	1	12	41	34	26	101
POLK	84	63	11	101	259	298	190	747
PULASKI	9	9	0	27	45	14	4	63
PUTNAM	30	8	1	21	60	27	99	186
QUITMAN	0	0	0	1	1	4	6	11
RABUN	37	12	1	27	77	24	56	157
RANDOLPH	8	6	1	13	28	10	23	61
RICHMOND	85	140	8	178	411	419	528	1,358
ROCKDALE	46	38	8	57	149	177	210	536

GEORGIA CHILD PROTECTIVE SERVICES

STATE FISCAL YEAR 2012

COUNTY	SUBSTANTIATED		UNSUBSTANTIATED		TOTAL CASES INVESTIGATED	SCREENED OUT	DIVERSIONS	TOTAL REPORTS
	OPEN	CLOSED	OPEN	CLOSED				
SCHLEY	9	6	0	17	32	7	14	53
SCREVEN	15	5	0	9	29	10	9	48
SEMINOLE	9	6	3	20	38	6	30	74
SPALDING	85	66	7	92	250	88	99	437
STEPHENS	28	20	5	74	127	182	101	410
STEWART	6	3	1	5	15	4	12	31
SUMTER	39	38	7	81	165	68	98	331
TALBOT	2	2	0	4	8	3	0	11
TALIAFERRO	1	0	0	0	1	4	4	9
TATTNALL	15	7	1	25	48	39	48	135
TAYLOR	11	8	4	28	51	21	8	80
TELFAIR	8	4	0	25	37	15	27	79
TERRELL	5	4	2	28	39	20	24	83
THOMAS	37	43	9	71	160	76	154	390
TIFT	43	38	10	163	254	62	212	528
TOOMBS	22	14	0	67	103	57	119	279
TOWNS	13	10	2	37	62	30	29	121
TREUTLEN	7	2	0	17	26	8	25	59
TROUP	67	40	8	181	296	96	125	517
TURNER	11	8	3	54	76	15	37	128
TWIGGS	18	5	1	19	43	12	10	65
UNION	18	21	3	53	95	38	34	167
UPSON	49	15	0	33	97	75	53	225
WALKER	62	49	1	99	211	215	318	744
WALTON	69	33	4	69	175	271	377	823
WARE	25	29	6	98	158	57	194	409
WARREN	6	5	0	5	16	7	32	55
WASHINGTON	7	13	4	23	47	34	61	142
WAYNE	15	20	3	57	95	45	101	241
WEBSTER	2	0	0	1	3	1	12	16
WHEELER	4	3	0	15	22	10	13	45
WHITE	33	14	3	78	128	25	50	203
WHITFIELD	92	57	14	142	305	174	441	920
WILCOX	4	8	0	16	28	14	24	66
WILKES	3	7	0	28	38	9	45	92
WILKINSON	21	4	0	13	38	11	11	60
WORTH	24	19	11	62	116	35	102	253
STATE TOTAL	6,505	5,555	977	13,709	26,746	16,705	24,408	67,859

SORUCE: Georgia SHINES

U.S. CENSUS

U.S. CENSUS

DATA TABLE DESCRIPTION:

U.S. CENSUS DATA - GEORGIA POPULATION BY COUNTY 2010

Georgia Population data was downloaded from the U.S. Census Bureau:

<http://www.census.gov/popest/data/counties/totals/2011/tables/CO-Est2011-01-13.xls>.

PROCEDURE:

Population data by county and total State estimate were copied. The Net Change from 2010 to 2011 is 2011 population estimate minus 2010 population. The Percent Change in population is (2011 population estimate divided by 2010 population) minus one.

Georgia Population

COUNTY	POPULATION 2010 CENSUS (April 2010)	POPULATION ESTIMATES ^a (as of July 1, 2011)	RESIDENT TOTAL POPULATION, NET CHANGE - APRIL 1, 2010 to JULY 1, 2011	RESIDENT TOTAL POPULATION, PERCENT CHANGE - APRIL 1, 2010 to JULY 1, 2011
APPLING	18,236	18,420	184	1.01%
ATKINSON	8,375	8,413	38	0.45%
BACON	11,096	11,203	107	0.96%
BAKER	3,451	3,085	-366	-10.61%
BALDWIN	45,720	44,417	-1,303	-2.85%
BANKS	18,395	18,251	-144	-0.78%
BARROW	69,367	69,912	545	0.79%
BARTOW	100,157	100,421	264	0.26%
BEN HILL	17,634	17,673	39	0.22%
BERRIEN	19,286	19,372	86	0.45%
BIBB	155,547	156,433	886	0.57%
BLECKLEY	13,063	13,290	227	1.74%
BRANTLEY	18,411	18,367	-44	-0.24%
BROOKS	16,243	15,889	-354	-2.18%
BRYAN	30,233	31,377	1,144	3.78%
BULLOCH	70,217	72,881	2,664	3.79%
BURKE	23,316	23,504	188	0.81%
BUTTS	23,655	23,504	-151	-0.64%
CALHOUN	6,694	6,740	46	0.69%
CAMDEN	50,513	50,410	-103	-0.20%
CANDLER	10,998	11,276	278	2.53%
CARROLL	110,527	111,159	632	0.57%
CATOOSA	63,942	64,530	588	0.92%
CHARLTON	12,171	13,422	1,251	10.28%
CHATHAM	265,128	271,544	6,416	2.42%
CHATTAHOOCHEE	11,267	11,749	482	4.28%
CHATTOOGA	26,015	25,736	-279	-1.07%
CHEROKEE	214,346	218,286	3,940	1.84%
CLARKE	116,714	117,344	630	0.54%
CLAY	3,183	3,111	-72	-2.26%
CLAYTON	259,424	261,532	2,108	0.81%
CLINCH	6,798	6,777	-21	-0.31%
COBB	688,078	697,553	9,475	1.38%
COFFEE	42,356	42,864	508	1.20%
COLQUITT	45,498	45,645	147	0.32%
COLUMBIA	124,053	128,112	4,059	3.27%
COOK	17,212	17,125	-87	-0.51%
COWETA	127,317	129,629	2,312	1.82%
CRAWFORD	12,630	12,567	-63	-0.50%
CRISP	23,439	23,710	271	1.16%
DADE	16,633	16,570	-63	-0.38%
DAWSON	22,330	22,459	129	0.58%
DECATUR	27,842	27,694	-148	-0.53%
DEKALB	691,893	699,893	8,000	1.16%
DODGE	21,796	21,894	98	0.45%
DOOLY	14,918	14,587	-331	-2.22%
DOUGHERTY	94,565	94,788	223	0.24%
DOUGLAS	132,403	133,355	952	0.72%
EARLY	11,008	10,778	-230	-2.09%
ECHOLS	4,034	4,129	95	2.35%
EFFINGHAM	52,250	52,655	405	0.78%

Georgia Population

COUNTY	POPULATION 2010 CENSUS (April 2010)	POPULATION ESTIMATES ^a (as of July 1, 2011)	RESIDENT TOTAL POPULATION, NET CHANGE - APRIL 1, 2010 to JULY 1, 2011	RESIDENT TOTAL POPULATION, PERCENT CHANGE - APRIL 1, 2010 to JULY 1, 2011
ELBERT	20,166	19,886	-280	-1.39%
EMANUEL	22,598	22,567	-31	-0.14%
EVANS	11,000	11,065	65	0.59%
FANNIN	23,682	23,708	26	0.11%
FAYETTE	106,567	107,784	1,217	1.14%
FLOYD	96,317	95,989	-328	-0.34%
FORSYTH	175,511	181,840	6,329	3.61%
FRANKLIN	22,084	21,864	-220	-1.00%
FULTON	920,581	949,599	29,018	3.15%
GILMER	28,292	28,324	32	0.11%
GLASCOCK	3,082	3,084	2	0.06%
GLYNN	79,626	80,386	760	0.95%
GORDON	55,186	55,621	435	0.79%
GRADY	25,011	25,255	244	0.98%
GREENE	15,994	16,031	37	0.23%
GWINNETT	805,321	824,941	19,620	2.44%
HABERSHAM	43,041	43,279	238	0.55%
HALL	179,684	183,052	3,368	1.87%
HANCOCK	9,429	9,400	-29	-0.31%
HARALSON	28,780	28,638	-142	-0.49%
HARRIS	32,024	32,265	241	0.75%
HART	25,213	25,305	92	0.36%
HEARD	11,834	11,744	-90	-0.76%
HENRY	203,922	207,360	3,438	1.69%
HOUSTON	139,900	143,925	4,025	2.88%
IRWIN	9,538	9,679	141	1.48%
JACKSON	60,485	61,257	772	1.28%
JASPER	13,900	13,885	-15	-0.11%
JEFF DAVIS	15,068	15,162	94	0.62%
JEFFERSON	16,930	16,675	-255	-1.51%
JENKINS	8,340	8,148	-192	-2.30%
JOHNSON	9,980	9,975	-5	-0.05%
JONES	28,669	28,516	-153	-0.53%
LAMAR	18,317	18,194	-123	-0.67%
LANIER	10,078	10,404	326	3.23%
LAURENS	48,434	47,949	-485	-1.00%
LEE	28,298	28,575	277	0.98%
LIBERTY	63,453	65,451	1,998	3.15%
LINCOLN	7,996	7,862	-134	-1.68%
LONG	14,464	15,136	672	4.65%
LOWNDES	109,233	111,885	2,652	2.43%
LUMPKIN	29,966	30,031	65	0.22%
MACON	14,740	21,673	6,933	47.04%
MADISON	28,120	14,170	-13,950	-49.61%
MARION	8,742	14,405	5,663	64.78%
MCDUFFIE	21,875	27,921	6,046	27.64%
MCINTOSH	14,333	8,746	-5,587	-38.98%
MERIWETHER	21,992	21,617	-375	-1.71%
MILLER	6,125	6,141	16	0.26%
MITCHELL	23,498	23,462	-36	-0.15%
MONROE	26,424	26,625	201	0.76%

Georgia Population

COUNTY	POPULATION 2010 CENSUS (April 2010)	POPULATION ESTIMATES ^a (as of July 1, 2011)	RESIDENT TOTAL POPULATION, NET CHANGE - APRIL 1, 2010 to JULY 1, 2011	RESIDENT TOTAL POPULATION, PERCENT CHANGE - APRIL 1, 2010 to JULY 1, 2011
MONTGOMERY	9,123	9,065	-58	-0.64%
MORGAN	17,868	17,961	93	0.52%
MURRAY	39,628	39,557	-71	-0.18%
MUSCOGEE	189,885	194,107	4,222	2.22%
NEWTON	99,958	100,814	856	0.86%
OCONEE	32,808	33,366	558	1.70%
OGLETHORPE	14,899	14,686	-213	-1.43%
PAULDING	142,324	143,542	1,218	0.86%
PEACH	27,695	27,823	128	0.46%
PICKENS	29,431	29,415	-16	-0.05%
PIERCE	18,758	18,770	12	0.06%
PIKE	17,869	17,751	-118	-0.66%
POLK	41,475	41,211	-264	-0.64%
PULASKI	12,010	11,735	-275	-2.29%
PUTNAM	21,218	21,345	127	0.60%
QUITMAN	2,513	2,464	-49	-1.95%
RABUN	16,276	16,274	-2	-0.01%
RANDOLPH	7,719	7,558	-161	-2.09%
RICHMOND	200,549	201,217	668	0.33%
ROCKDALE	85,215	85,765	550	0.65%
SCHLEY	5,010	5,020	10	0.20%
SCREVEN	14,593	14,367	-226	-1.55%
SEMINOLE	8,729	8,791	62	0.71%
SPALDING	64,073	64,033	-40	-0.06%
STEPHENS	26,175	25,960	-215	-0.82%
STEWART	6,058	5,910	-148	-2.44%
SUMTER	32,819	32,511	-308	-0.94%
TALBOT	6,865	6,751	-114	-1.66%
TALIAFERRO	1,717	1,703	-14	-0.82%
TATTNALL	25,520	25,688	168	0.66%
TAYLOR	8,906	8,499	-407	-4.57%
TELFAIR	16,500	16,057	-443	-2.68%
TERRELL	9,315	9,319	4	0.04%
THOMAS	44,720	44,702	-18	-0.04%
TIFT	40,118	41,461	1,343	3.35%
TOOMBS	27,223	27,434	211	0.78%
TOWNS	10,471	10,611	140	1.34%
TREUTLEN	6,885	6,825	-60	-0.87%
TROUP	67,044	67,764	720	1.07%
TURNER	8,930	8,875	-55	-0.62%
TWIGGS	9,023	8,779	-244	-2.70%
UNION	21,356	21,134	-222	-1.04%
UPSON	27,153	26,977	-176	-0.65%
WALKER	68,756	68,848	92	0.13%
WALTON	83,768	84,580	812	0.97%
WARE	36,312	36,474	162	0.45%
WARREN	5,834	5,721	-113	-1.94%
WASHINGTON	21,187	21,111	-76	-0.36%
WAYNE	30,099	30,327	228	0.76%
WEBSTER	2,799	2,791	-8	-0.29%
WHEELER	7,421	7,939	518	6.98%

Georgia Population

COUNTY	POPULATION 2010 CENSUS (April 2010)	POPULATION ESTIMATES ^a (as of July 1, 2011)	RESIDENT TOTAL POPULATION, NET CHANGE - APRIL 1, 2010 to JULY 1, 2011	RESIDENT TOTAL POPULATION, PERCENT CHANGE - APRIL 1, 2010 to JULY 1, 2011
WHITE	27,144	27,273	129	0.48%
WHITFIELD	102,599	103,184	585	0.57%
WILCOX	9,255	9,298	43	0.46%
WILKES	10,593	10,211	-382	-3.61%
WILKINSON	9,563	9,444	-119	-1.24%
WORTH	22,000	21,921	-79	-0.36%
STATE TOTALS	9,687,974	9,815,210	127,236	1.31%

Source: U.S. Census Bureau, Population Division. Release Date: April 2012

U.S. CENSUS

DATA TABLE DESCRIPTION:

U.S. CENSUS DATA - GEORGIA POVERTY BY COUNTY 2010

Georgia poverty data for 2010 was downloaded previously from the U.S. Census Bureau:
<http://factfinder2.census.gov/faces/tableservices/jsf/pages/productview.xhtml?src=bkmk>.
No updated information has been published for 2011.

POVERTY IN THE 2010 CENSUS

COUNTY	ALL AGES BELOW POVERTY LEVEL		AGES 5 AND UNDER BELOW POVERTY LEVEL		AGES 5-17 BELOW POVERTY LEVEL		MEDIAN HOUSEHOLD INCOME IN 2010
	NUMBER	PERCENT	NUMBER	PERCENT	NUMBER	PERCENT	
APPLING	4,347	24.5	544	2.4	1,092	33.3	36,601
ATKINSON	3,018	36.3	582	10.2	803	47.9	28,579
BACON	2,750	25.6	344	2.7	640	32.8	31,692
BAKER	884	26	103	2.6	210	38.0	33,950
BALDWIN	11,130	27	1,115	2.6	2,053	31.9	36,091
BANKS	3,004	16.4	351	2.0	780	22.7	42,196
BARROW	8,339	12	1,054	0.1	2,377	17.6	52,391
BARTOW	14,369	14.5	1,714	1.0	4,051	20.9	43,825
BEN HILL	4,838	27.9	630	1.7	1,275	39.8	29,910
BERRIEN	4,138	21.7	474	0.7	1,159	33.0	32,859
BIBB	38,737	25.9	4,961	2.0	10,165	36.7	36,220
BLECKLEY	2,306	19.8	252	2.1	522	25.0	38,513
BRANTLEY	4,318	23.6	545	3.5	1,003	28.9	35,732
BROOKS	3,962	24.5	451	1.0	1,005	37.4	32,067
BRYAN	3,560	11.8	467	1.5	998	15.2	65,478
BULLOCH	22,553	34.3	1,622	2.7	2,899	29.0	31,943
BURKE	7,574	32.9	806	-0.7	2,258	47.7	30,688
BUTTS	3,506	16.5	383	1.3	851	22.2	43,777
CALHOUN	1,834	36.8	168	1.9	367	39.1	28,618
CAMDEN	7,543	15.5	846	-0.1	2,028	21.4	48,967
CANDLER	2,701	25.2	321	1.0	743	37.2	30,496
CARROLL	20,312	19	2,172	1.5	4,517	22.8	45,242
CATOOSA	9,039	14.3	1,074	2.1	2,154	18.5	47,337
CHARLTON	2,894	27.9	272	1.9	561	30.2	32,316
CHATHAM	49,899	19.7	6,179	2.9	9,950	24.6	42,728
CHATTAHOOCHEE	1,452	18.5	205	-0.3	399	20.9	46,292
CHATTOOGA	4,922	20.5	539	2.1	1,109	26.7	33,990
CHEROKEE	18,346	8.6	2,149	0.7	4,688	11.0	63,520
CLARKE	35,801	33.3	2,640	1.3	4,529	34.3	34,000
CLAY	1,109	35.7	133	2.3	281	56.0	27,080
CLAYTON	57,649	22.6	8,834	2.8	16,238	31.3	36,595
CLINCH	1,650	24.7	213	2.2	420	32.7	30,428
COBB	95,398	14	11,641	1.7	22,706	18.0	59,471
COFFEE	10,250	25.9	1,519	3.9	2,764	35.4	33,527
COLQUITT	11,742	26.2	1,480	1.6	2,899	33.7	32,010
COLUMBIA	10,959	8.8	1,222	1.3	2,351	9.3	64,435
COOK	4,204	24.7	536	1.9	1,151	34.7	32,244
COWETA	14,026	11	2,005	1.7	3,847	15.2	56,407
CRAWFORD	2,365	19	288	3.5	555	26.3	41,593
CRISP	6,836	29.9	862	1.4	1,970	46.0	35,232
DADE	2,535	16.3	244	1.7	537	20.6	40,161
DAWSON	3,044	13.9	330	1.5	750	20.2	51,127
DECATUR	6,712	25.1	900	3.7	1,802	35.1	33,288
DEKALB	131,946	19.4	16,094	2.5	26,865	24.0	47,068
DODGE	4,453	22.5	509	1.8	1,081	31.5	33,731
DOOLY	3,244	25.2	349	2.5	735	32.4	32,216
DOUGHERTY	31,930	35.1	4,404	5.4	7,308	43.8	31,200
DOUGLAS	16,581	12.7	2,424	2.2	4,599	16.9	52,887
EARLY	2,978	27.6	365	3.7	783	36.6	30,572
ECHOLS	1,086	27	143	-0.3	330	40.9	32,674
EFFINGHAM	5,482	10.6	708	1.4	1,520	13.7	60,017
ELBERT	4,863	24.5	594	3.2	1,158	34.6	32,888
EMANUEL	6,410	29.5	800	2.2	1,649	40.9	30,985
EVANS	2,635	24.9	313	0.1	726	37.3	32,427
FANNIN	4,262	18.2	347	0.9	905	27.3	33,253
FAYETTE	7,145	6.7	824	1.4	1,974	8.6	79,276
FLOYD	17,634	19.1	1,835	1.0	4,136	25.3	38,289

POVERTY IN THE 2010 CENSUS

COUNTY	ALL AGES BELOW POVERTY LEVEL		AGES 5 AND UNDER BELOW POVERTY LEVEL		AGES 5-17 BELOW POVERTY LEVEL		MEDIAN HOUSEHOLD INCOME IN 2010
	NUMBER	PERCENT	NUMBER	PERCENT	NUMBER	PERCENT	
FORSYTH	12,606	7.2	1,658	1.2	3,070	7.7	81,629
FRANKLIN	3,865	18	510	4.0	896	25.0	36,109
FULTON	159,048	17.7	17,483	1.7	34,510	22.2	53,580
GILMER	4,454	15.9	570	2.3	1,185	26.5	39,710
GLASCOCK	553	18.5	60	2.4	128	21.1	36,433
GLYNN	14,756	18.8	2,005	2.9	3,685	27.3	42,993
GORDON	10,045	18.5	1,334	2.6	2,470	23.7	40,656
GRADY	6,974	28.1	791	1.6	1,638	36.7	31,297
GREENE	4,330	27.4	440	2.8	922	38.9	36,001
GWINNETT	108,754	13.6	13,817	1.2	30,693	18.0	57,848
HABERSHAM	7,055	17.3	889	2.2	1,692	23.4	40,316
HALL	31,495	17.8	3,833	0.7	8,573	24.5	47,238
HANCOCK	2,618	33.1	235	4.5	473	37.5	23,887
HARALSON	5,868	20.7	657	2.5	1,373	26.2	39,046
HARRIS	2,986	9.4	305	1.3	688	11.9	62,264
HART	5,633	23	526	1.7	1,134	28.4	33,753
HEARD	2,488	21.3	310	3.4	626	27.8	39,614
HENRY	20,839	10.2	2,390	1.0	5,833	12.9	59,371
HOUSTON	19,562	14.1	2,838	2.5	5,045	18.7	54,977
IRWIN	2,128	24	260	3.0	539	32.1	32,859
JACKSON	9,435	15.7	1,066	1.3	2,316	20.0	50,409
JASPER	2,609	18.9	342	2.1	704	28.2	43,443
JEFF DAVIS	3,513	23.6	486	2.6	933	32.1	32,380
JEFFERSON	4,734	28.9	690	5.8	1,165	38.2	29,683
JENKINS	2,376	28.9	330	3.6	669	42.1	27,682
JOHNSON	2,505	30.5	246	3.2	496	32.8	28,332
JONES	3,351	11.9	428	1.6	902	16.5	52,215
LAMAR	3,011	17.8	319	1.1	696	25.7	40,001
LANIER	2,220	22.6	314	0.8	601	32.9	33,430
LAURENS	9,339	19.7	1,067	0.8	2,481	28.1	36,568
LEE	2,834	10.3	393	1.9	772	12.9	61,489
LIBERTY	13,092	21.8	2,067	0.9	3,624	30.0	39,697
LINCOLN	1,644	20.8	160	2.2	356	29.8	35,201
LONG	2,969	20.8	429	0.7	874	28.9	38,243
LOWNDES	24,077	23.3	2,647	0.9	5,405	29.5	36,486
LUMPKIN	4,653	16.5	482	0.9	1,018	23.6	44,309
MACON	4,618	21.4	541	1.4	1,226	30.1	36,559
MADISON	2,689	19	317	2.6	672	30.2	35,681
MARION	4,029	31.7	424	3.5	855	36.6	27,324
MCDUFFIE	4,803	17.2	535	2.0	1,176	23.3	41,267
MCINTOSH	2,062	23.8	242	2.2	518	34.5	33,534
MERIWETHER	4,324	20.1	455	0.5	1,129	30.7	35,287
MILLER	1,455	24.4	174	2.3	347	34.8	32,015
MITCHELL	6,242	29.3	790	2.2	1,542	38.5	31,094
MONROE	3,649	14.5	407	2.0	857	19.6	49,839
MONTGOMERY	1,969	23.5	213	2.3	457	30.5	35,133
MORGAN	2,916	16.5	352	3.1	715	21.2	45,804
MURRAY	7,491	19.1	949	2.4	1,900	24.9	39,911
MUSCOGEE	36,998	20.2	4,923	2.3	9,198	27.3	36,359
NEWTON	14,785	15.1	1,874	1.5	4,024	19.3	48,989
OCONEE	2,697	8.2	351	1.9	663	9.0	76,298
OGLETHORPE	2,440	16.6	265	2.1	584	22.1	40,936
PAULDING	12,468	8.8	1,799	1.4	3,376	10.8	61,496
PEACH	6,638	25.7	821	3.9	1,400	31.7	38,024
PICKENS	3,939	13.6	461	1.5	995	20.9	48,532
PIERCE	3,406	18.3	469	2.6	946	26.7	37,262
PIKE	2,222	12.7	285	2.8	583	15.5	52,411

POVERTY IN THE 2010 CENSUS

COUNTY	ALL AGES BELOW POVERTY LEVEL		AGES 5 AND UNDER BELOW POVERTY LEVEL		AGES 5-17 BELOW POVERTY LEVEL		MEDIAN HOUSEHOLD INCOME IN 2010
	NUMBER	PERCENT	NUMBER	PERCENT	NUMBER	PERCENT	
POLK	9,065	22.1	1,173	2.0	2,208	29.3	36,468
PULASKI	2,228	20.8	232	1.7	492	26.7	36,665
PUTNAM	3,738	17.8	471	0.9	1,024	32.1	40,037
QUITMAN	726	28.9	73	3.9	153	40.5	28,102
RABUN	2,897	18.1	364	3.4	659	27.5	37,990
RANDOLPH	2,036	27.6	211	1.6	457	37.8	26,863
RICHMOND	49,468	25.9	6,778	3.1	12,008	36.0	37,866
ROCKDALE	12,527	14.9	1,836	2.6	3,714	22.0	53,899
SCHLEY	877	17.6	115	3.4	249	21.4	37,761
SCREVEN	3,330	23.7	339	0.6	828	32.9	30,925
SEMINOLE	2,365	27.5	259	4.0	533	36.7	30,604
SPALDING	14,122	22.5	1,914	2.7	3,656	32.4	38,451
STEPHENS	5,676	22.2	674	3.0	1,312	31.2	34,445
STEWART	1,663	38.1	140	2.7	289	43.4	26,659
SUMTER	9,441	30.6	1,047	0.7	2,419	42.3	31,871
TALBOT	1,474	21.7	159	3.2	353	32.6	29,933
TALIAFERRO	514	30.3	48	0.9	108	48.0	26,863
TATTNALL	5,800	28	632	2.7	1,260	32.9	35,039
TAYLOR	2,031	23.6	235	3.4	483	30.6	30,748
TELFAIR	4,384	32.9	475	4.0	871	37.2	28,414
TERRELL	2,644	29.3	303	1.8	652	40.4	31,143
THOMAS	11,596	26.4	1,441	4.6	2,446	30.9	35,539
TIFT	8,765	22.6	1,105	1.8	2,296	31.3	34,702
TOOMBS	7,577	28.1	1,013	2.3	2,002	37.7	32,002
TOWNS	1,468	15	142	2.9	320	25.7	38,207
TREUTLEN	1,925	29.6	237	2.5	476	39.9	30,809
TROUP	13,686	21.1	1,586	1.4	3,621	28.5	39,422
TURNER	2,410	28	287	2.9	605	38.1	26,845
TWIGGS	2,223	25.1	191	2.4	390	29.7	35,232
UNION	3,986	19.1	406	3.9	804	28.7	37,540
UPSON	5,648	21.3	589	1.3	1,402	30.5	33,461
WALKER	11,970	17.8	1,259	1.6	2,862	24.3	36,854
WALTON	12,013	14.5	1,577	2.3	3,057	18.5	51,913
WARE	7,850	23.2	940	1.6	1,914	32.5	33,176
WARREN	1,582	27.7	169	1.4	366	38.0	29,764
WASHINGTON	5,878	30.6	550	1.6	1,197	33.8	33,199
WAYNE	6,312	22.8	794	0.6	1,800	34.8	36,562
WEBSTER	606	21.8	66	3.3	143	27.2	31,216
WHEELER	1,810	33.2	141	-0.4	344	35.7	29,834
WHITE	4,485	16.8	516	2.6	1,015	22.6	40,120
WHITFIELD	20,507	20.2	2,938	3.5	4,976	23.9	40,117
WILCOX	2,171	30	224	3.1	443	35.1	31,442
WILKES	2,545	24.9	300	3.4	593	35.3	30,451
WILKINSON	1,982	21.1	256	2.5	498	30.5	35,530
WORTH	4,539	21.2	498	1.7	1,103	28.7	37,436
STATE TOTALS	1,698,003	18.0	197,978	29.4	406,975	23.0	46,252

Source: U.S. Census Bureau