

Monthly Measures and Results for April 2019*

*(Reflects Safety Outcomes as of February 28, 2019 And
Permanency Outcomes as of March 31, 2019)
With Appendices

This report is produced by the Data Unit. For questions or comments, you may contact one of the following:
Steven Reed, Director (Steven.Reed@dhs.ga.gov)
Samantha Adams, Data Unit Manager (Samantha.Adams@dhs.ga.gov)
Vickie Fluellen, Business Support Analyst 3 (Vickie.Fluellen@dhs.ga.gov)

- Part I: Definitions And Data Sources contained in Report**
- Part II: Safety Outcomes**
- Part III: Permanency/Well-being Outcomes**
- Part IV: Appendices**
 - A. Regional Charts of Outcome V (Trend of Unique Children in the Legal Custody of DFCS Under the Age of 18)**
 - B. Regional Charts of Outcome XIV: Stability Performance Coefficient (Number of Moves/Number of Days in Custody * 1000)**

***There are no revisions to this document to date.

SAFETY: Children are first and foremost, protected from abuse and neglect.

Outcome I: Child Protective Services Cases

Count of unique CPS Investigations and Family Preservation (Ongoing) stages open at any point during the month vs. Average count of unique CPS Investigations, Family Preservation, and Family Support stages for the prior four state fiscal years. Outcome is calculated 45 days prior to the date of report.

Outcome 1A: Family Support Cases Only: Count of unique Family Support stages open at any point during the month vs average of four prior state fiscal years..

Outcome 1B: Family Preservation Cases Only: Count of unique Family Preservation stages open at any point during the month vs average of four prior state fiscal years..

Outcome 1C: Investigation Cases Only: Count of unique Investigation stages open at any point during the month vs average of four prior state fiscal years.

Outcome 1C_1: Comparison of Investigations that were open at anytime during the month vs investigations opened during the month vs the average of the prior state fiscal years at any point in time.

Sources: SHINES

Outcome II: Recurrence of Substantiated Child Maltreatment

Of all the children who were victims of substantiated maltreatment in the first 6 months of the year, the percentage that had substantiated maltreatment within the following 6 months. Outcome is calculated 45 days prior to the date of report. Each month is calculated as a rolling calendar year. *National Standard: less than or equal to 5.40%*

Source: SHINES

Outcome III: Disposition of Child Abuse and Neglect Reports

Chart reflects the disposition of reports received in a particular month. Data includes count of Family Support, Investigations -- Substantiated Investigations and Unsubstantiated Investigations, and Screen-outs. Outcome is calculated 45 days prior to the date of report.

Source: SHINES

PERMANENCY: Children have permanency and stability in their living situations.

Outcome IV: Subsequent Case-type of Investigations by Disposition

Chart reflects the disposition of investigations received in a particular month by the subsequent case type. Charts are broken out by substantiated and unsubstantiated investigation and their subsequent track assignment or final disposition.

Outcome is calculated 45 days prior to the date of report.

Source: SHINES

Outcome V: Number of Child Placement Services Cases

Count of unique children who were involved in an open Foster Care or Adoption stage during the month. In placement services each child who is the principal (PC) is considered a case. The chart also reveals the average of the last four state fiscal years to provide the viewer with a prior glimpse of the trend in placement cases.

Source: SHINES

Outcome VI: Children in the Legal Custody of DFCS Under the Age of 18

Count of unique children who were in the legal custody of DFCS (17 years of age and under) at some point during the month.

Source: SHINES

Outcome VI-A: Age Distribution of Children in Custody: Chart is a percentage of children in DFCS Custody by age group.

Outcome VII: Comparison of Foster Care Entries & Exits

Number of children who have entered foster care and number of children who have exited foster care during the month.

Total children at end of month show the number of children on the last day of the month.

Source: SHINES

Outcome VIII: Foster Care Re-entries

Of all the children who entered foster care, the percentage that were discharged from a prior episode of foster care within 12 months of the current foster care placement. National Standard: less than or equal to 8.60%.

Source: SHINES

PERMANENCY cont'd: Children have permanency and stability in their living situations.

Outcome IX: Foster Care Length of Stay

Percentage of children by number of months in foster care during each month.

Source: SHINES

Outcome X: Length of Time to Achieve Reunification

Percentage of children who exited care during the month through reunification with their family that reunified in less than 12 months from the date of their removal. National Standard: greater than or equal to 76.20%

Source: SHINES

Outcome XI: Children Placed with Relatives

Of all children in DFCS custody, the percentage that are placed with a relative or a relative foster home.

State Target: greater than or equal to 30.00%

Source: SHINES

Outcome XII: Extended Youth Services

Number of children ages 18 – 21 who remained in the custody of DFCS beyond their birth month.

Source: SHINES

Outcome XIII: Monthly Discharges

The number of children who were discharged during the month by permanency decision divided into two charts by positive permanency vs other types.

Source: SHINES

Outcome XIII - A: Average Number of Months to Achieve Positive Permanency

Of all children in Outcome XIII, the number of months from removal (entry into foster care) until exit due to reunification, relative, adoption or guardianship..

Source: SHINES

PERMANENCY cont'd: Children have permanency and stability in their living situations.

Outcome XIV: Placement Stability Performance (Number of Moves/Number of Days in Custody * 1000)

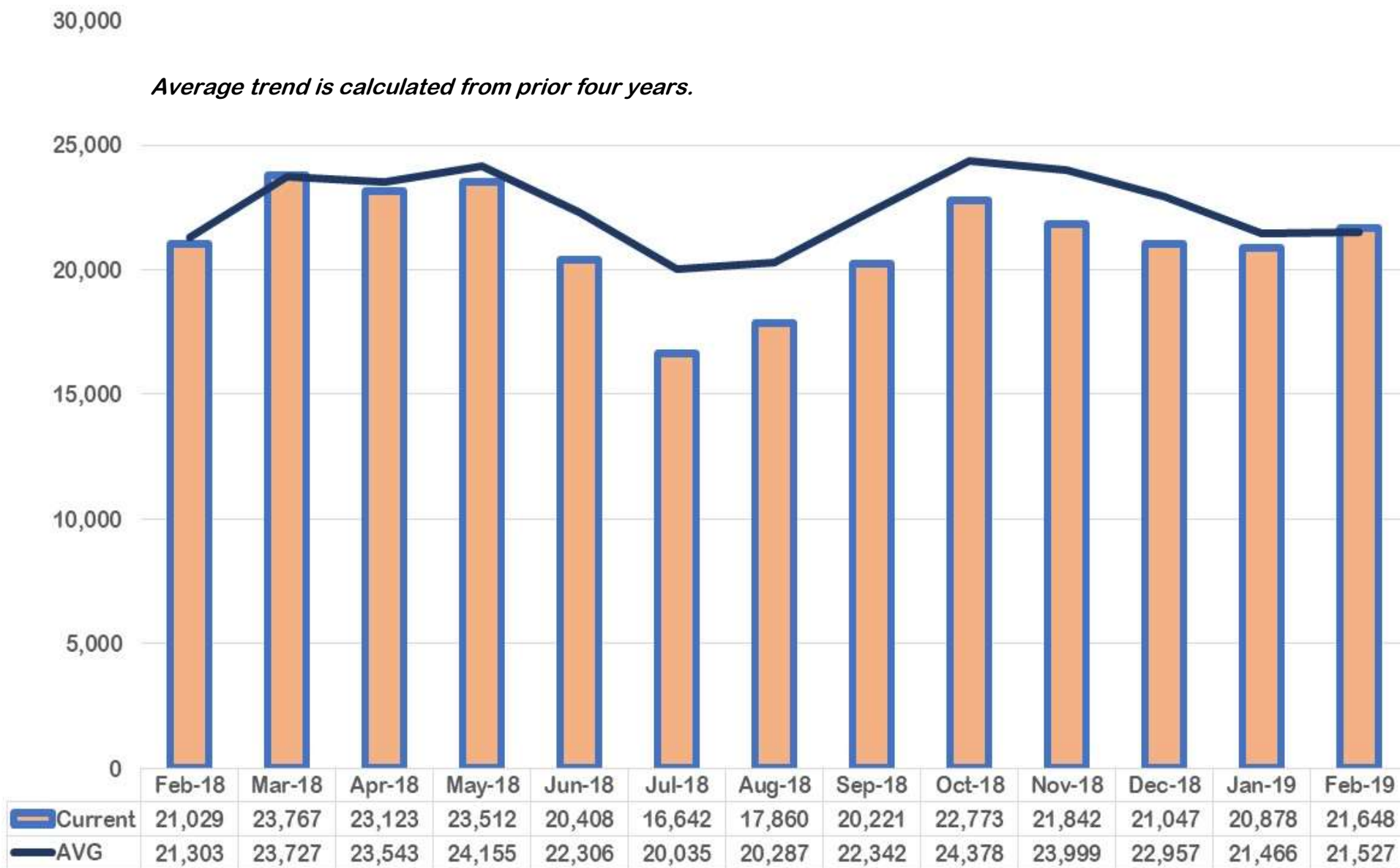
A calculated value based upon the ACF CFSS Round 3 which is part of Program Improvement. It is calculated from a rolling 12 month population of the entry cohort where the child remained in custody for over 8 days and was not 18 on the date of removal. The federal standard is 4.12.

Source: SHINES

***Note: Data may vary from month to month due to 13 month data trends being re-run over the time span for the various outcomes in this report.*

DIVISION OF FAMILY & CHILDREN SERVICES

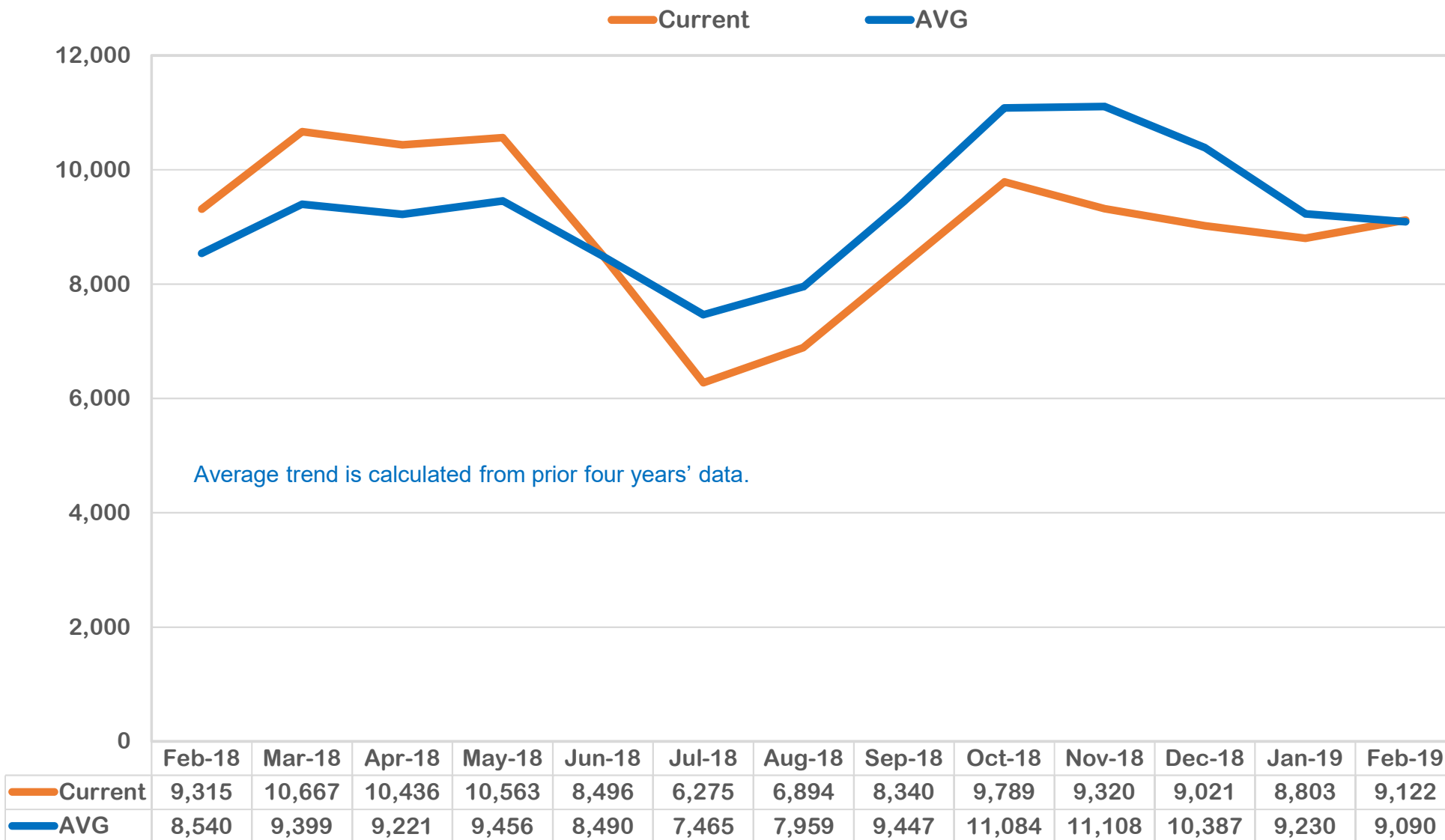
How many CPS Cases were open monthly during the last 13 months?



Outcome I: Child Protective Services Cases (February 2018 – February 2019)

DIVISION OF FAMILY & CHILDREN SERVICES

How many Family Support Cases were open per month for the last 13 months?

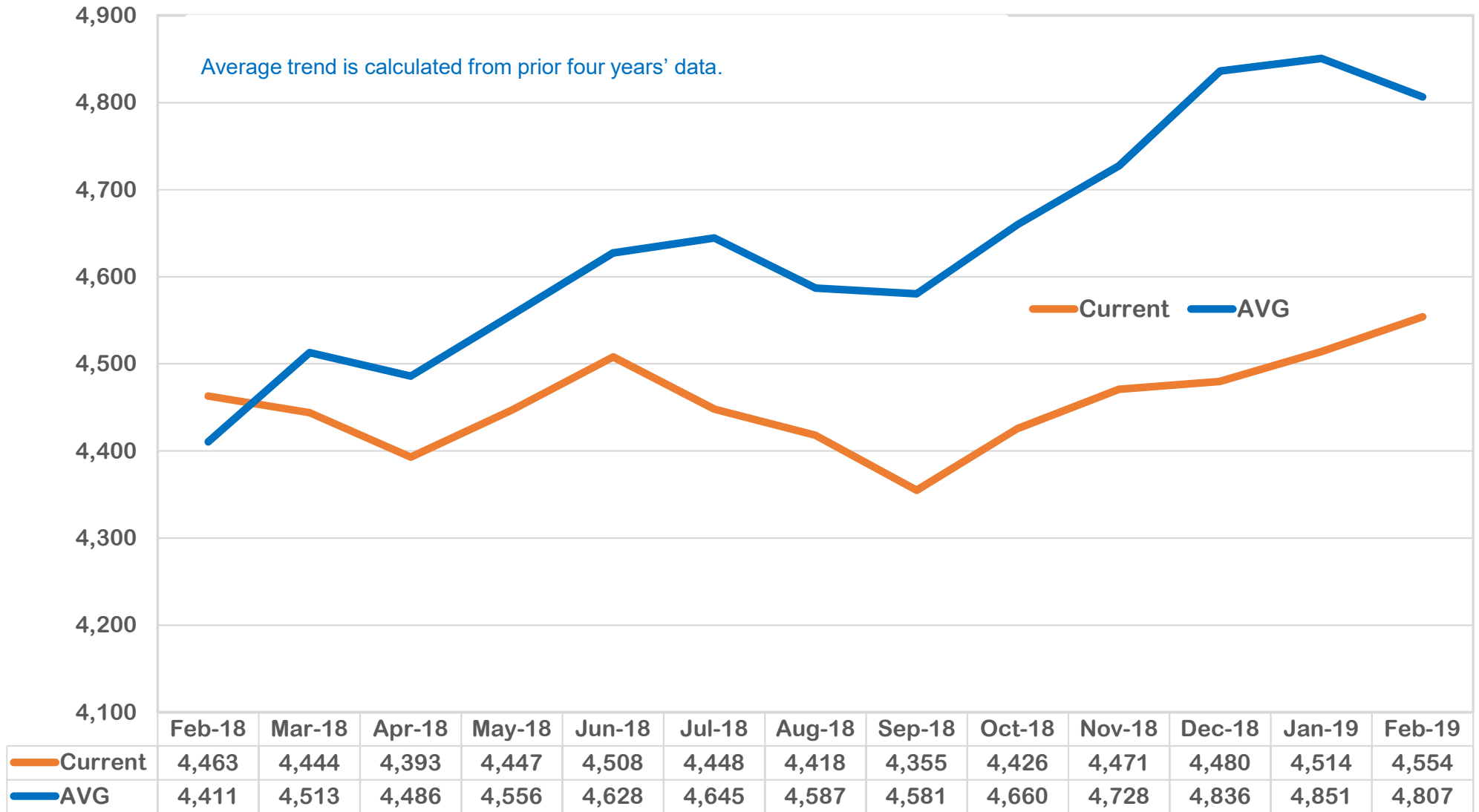


The graph above reveals a similar trend in the last 13-months compared to the average trend. During July 2018, there is a 16% decline in the number of cases when compared to average trend. This was a 26% drop from the prior month of June 2018. The trend in February 2019 exceeded the average slightly and exceeded the July 2018 cases by 45%. The current trend is 4.6 % less than the average trend for January.

Outcome IA: Child Protective Services Cases Family Support Cases Only (February 2018 – February 2019)

DIVISION OF FAMILY & CHILDREN SERVICES

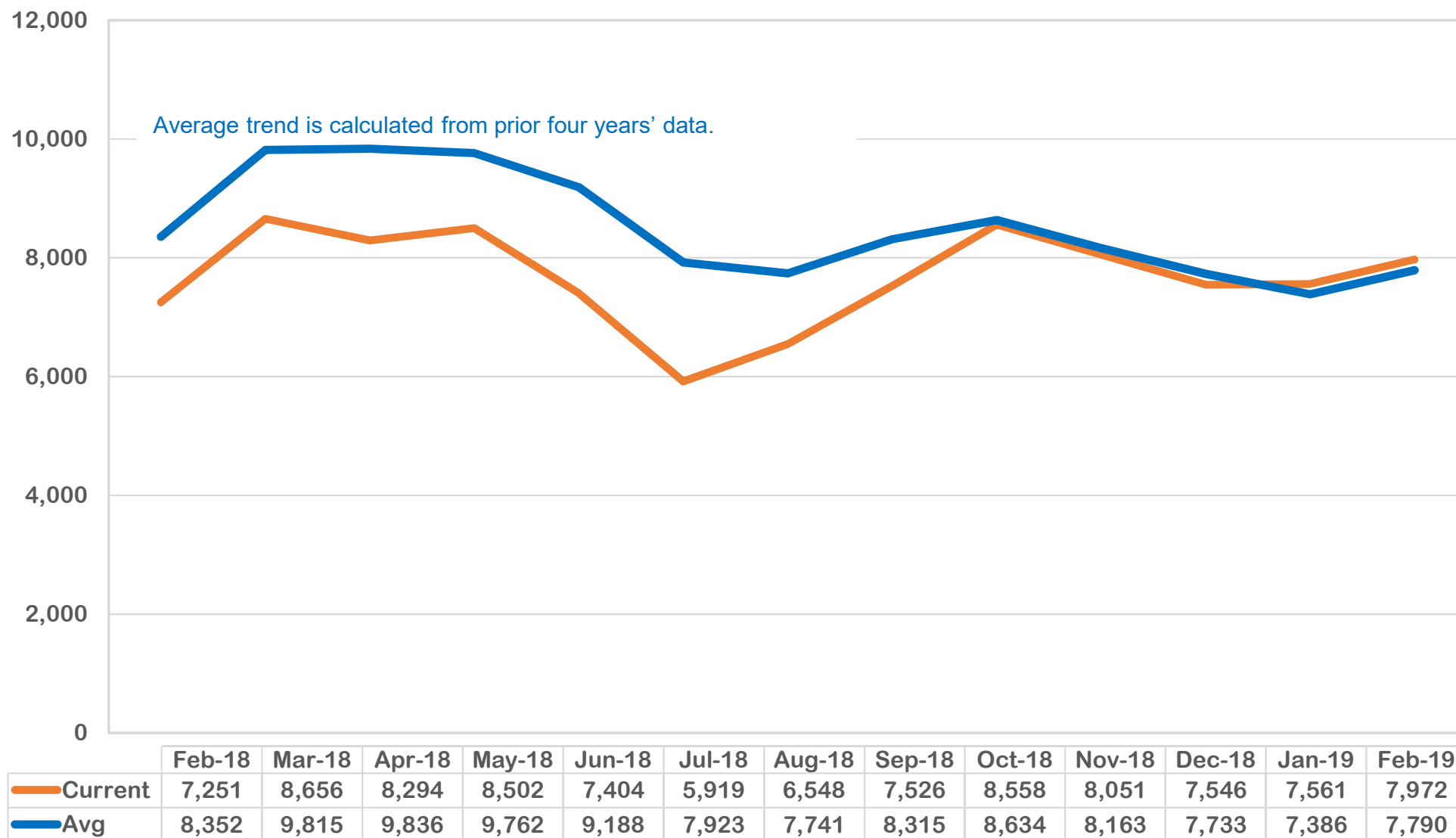
How many Family Preservation Cases were open per month during for the last 13 months?



The average trend is higher than the current trend since March 2018. While there is a 5% increase in cases since September 2018; in February 2019 Family Preservation cases were 5% lower than the average trend.

DIVISION OF FAMILY & CHILDREN SERVICES

How many Investigation Cases were open per month for the past 13 months?

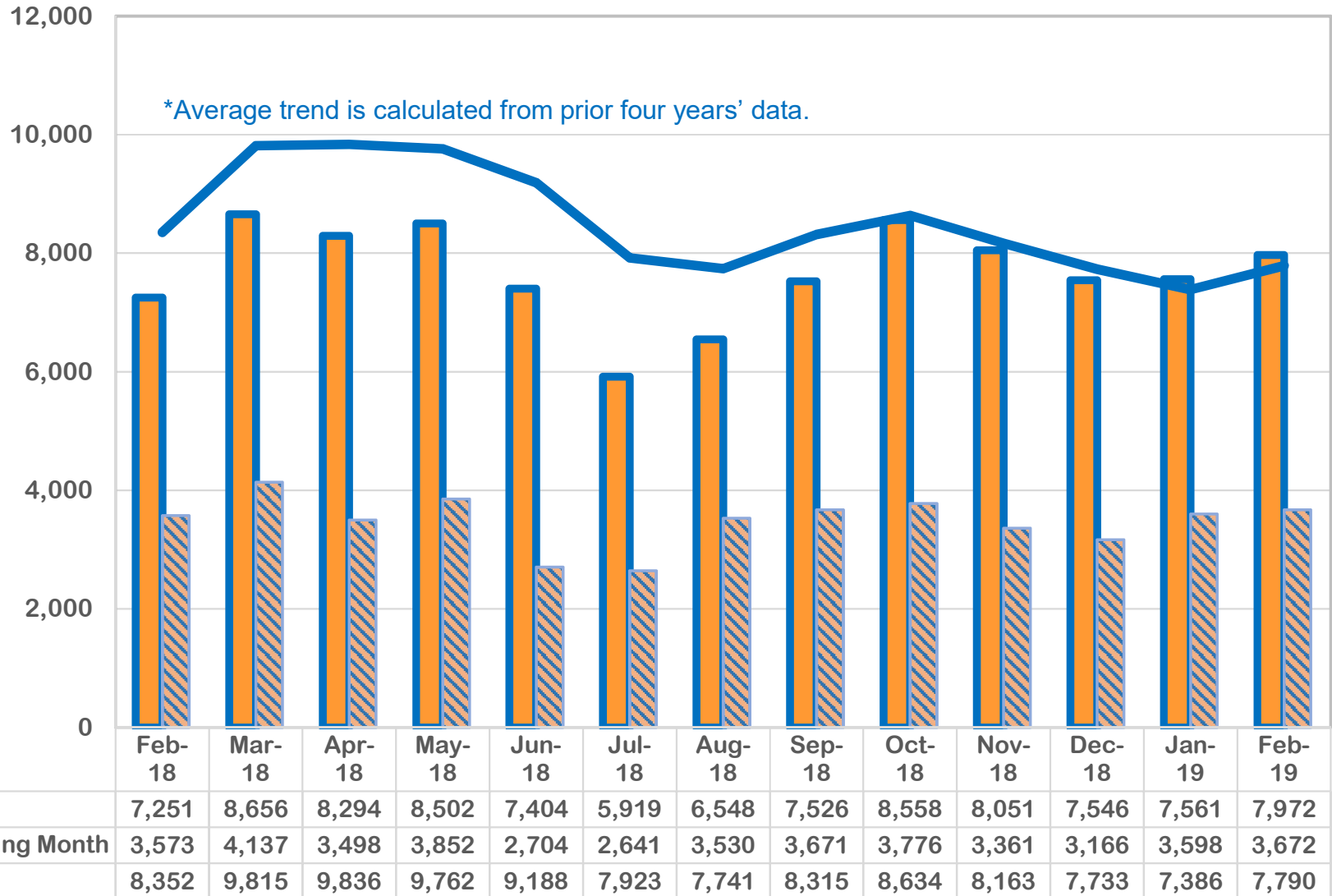


Although the last 13 months have seen an increase in investigations of over 13% since the prior 13 months (not pictured), the current year's total investigations reveals an improvement in investigations when compared to the monthly averages from February 2018 – December 2018. February 2019 had an increase of over 2% over the average.

Outcome IC: Child Protective Services Cases Investigation Cases Only (February 2018 – February 2019)

DIVISION OF FAMILY & CHILDREN SERVICES

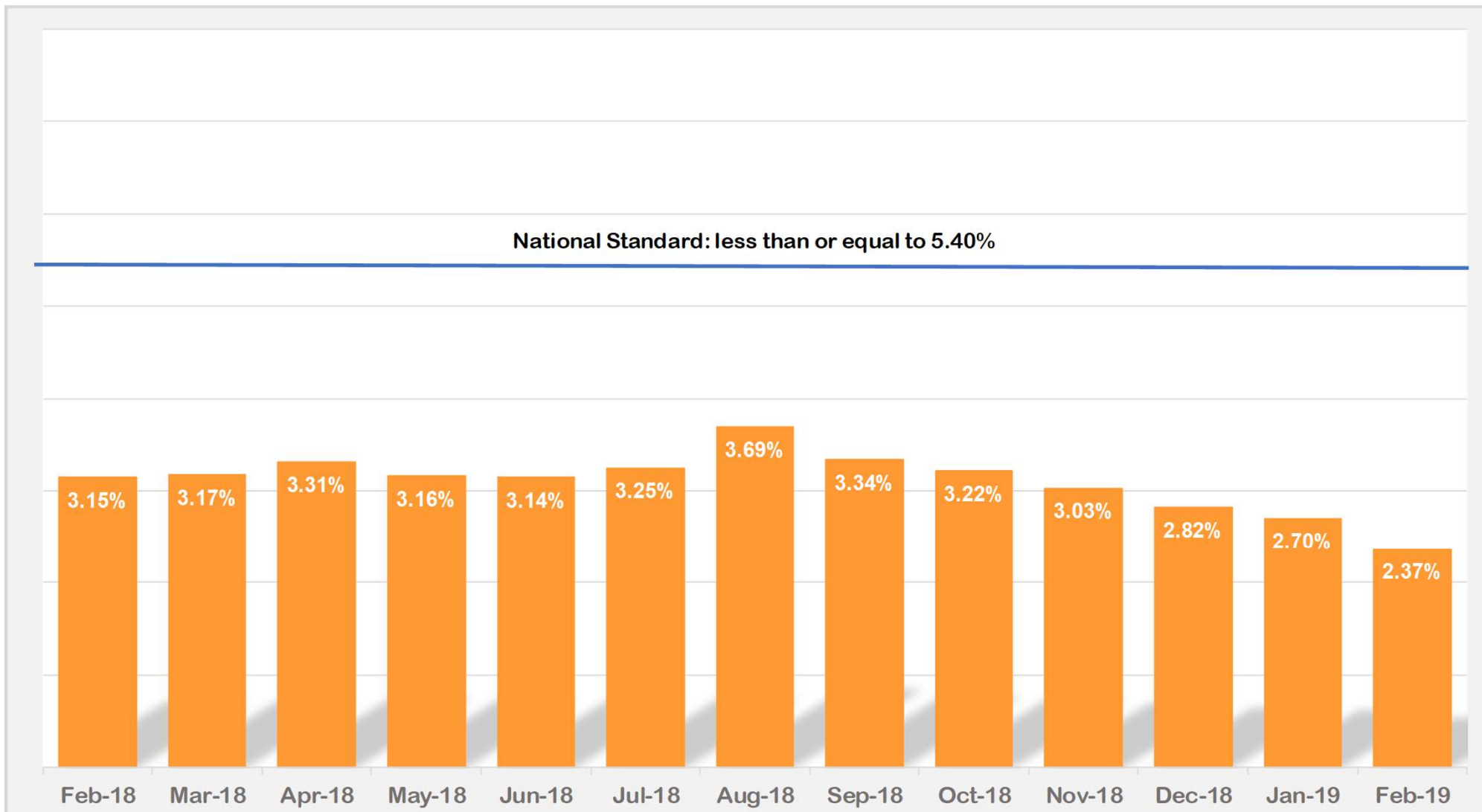
How many Investigation Cases were open at any time during the month Vs Investigation Cases that were initiated during the month for the past 13 months?



This chart indicates that during each month, the cases that are opened during the month are less than half of the overall open cases during the month. Additionally, the increases and decreases in those opened during the month resemble the trend in the current cases open during the month.

Outcome IC_1: Child Protective Services Cases Investigation Cases Only (February 2018 – February 2019)

What percentage of children had a subsequent substantiated incident of maltreatment within 6 months?



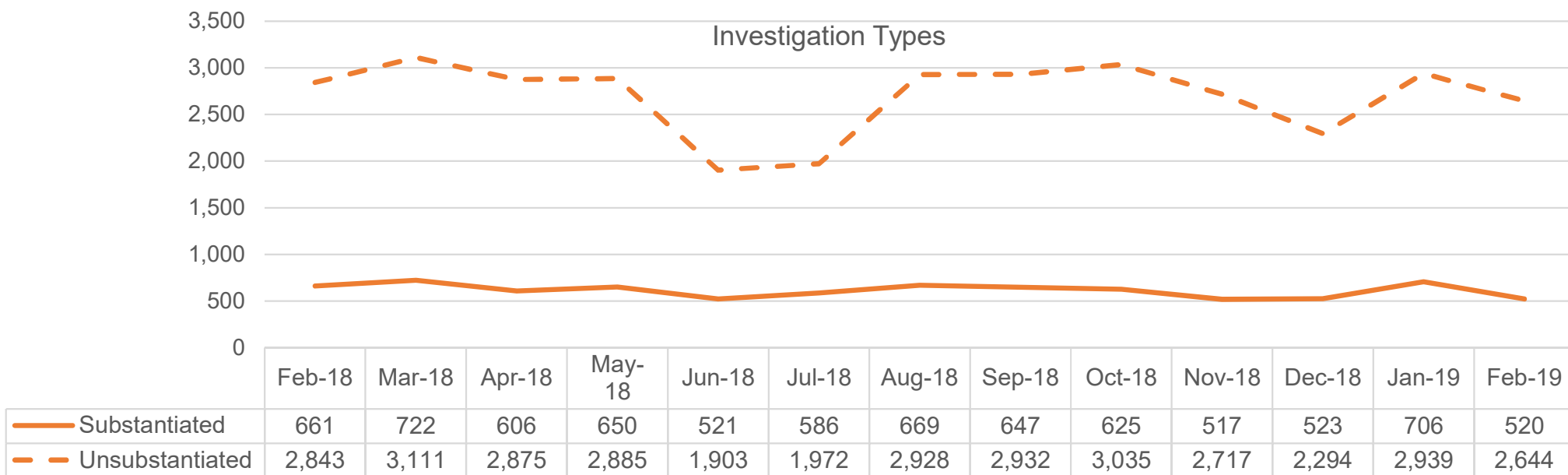
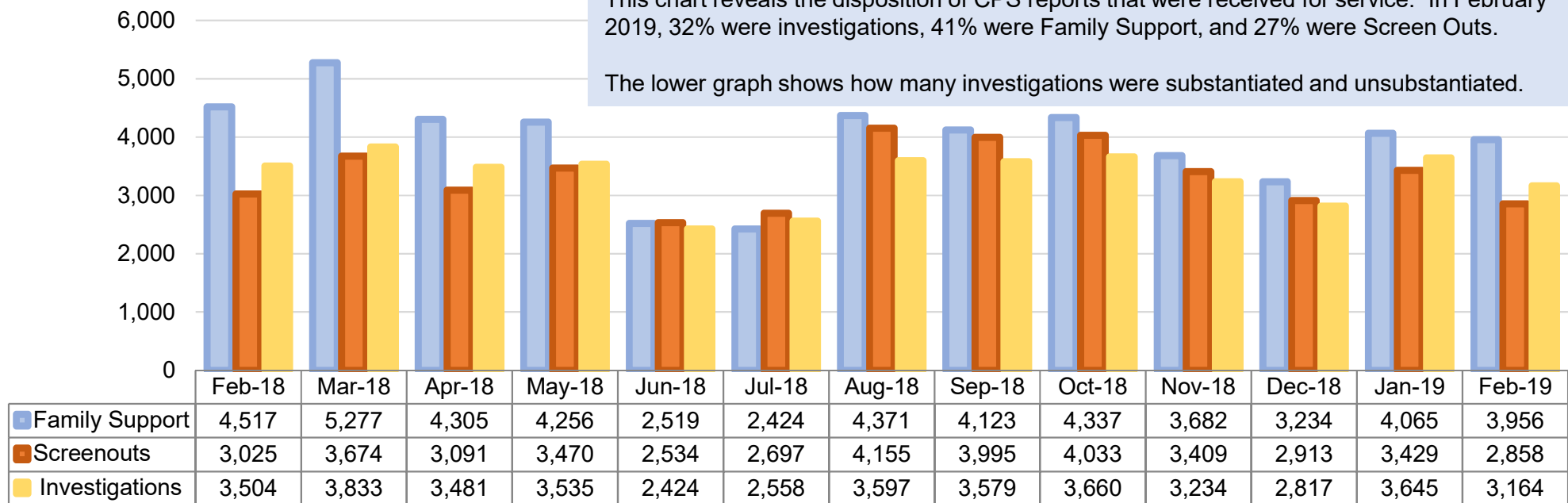
The trend reveals that Georgia has consistently maintained a low recurrence rate below the national standard of 5.4%. However, increases can be seen from January 2018 – April 2018 followed by a subsequent higher rate occurring in August 2018. Georgia has a lower percentage of maltreatment in February 2019 as compared to February 2018.

DIVISION OF FAMILY & CHILDREN SERVICES

What was the disposition of all CPS reports received during the month ?

This chart reveals the disposition of CPS reports that were received for service. In February 2019, 32% were investigations, 41% were Family Support, and 27% were Screen Outs.

The lower graph shows how many investigations were substantiated and unsubstantiated.

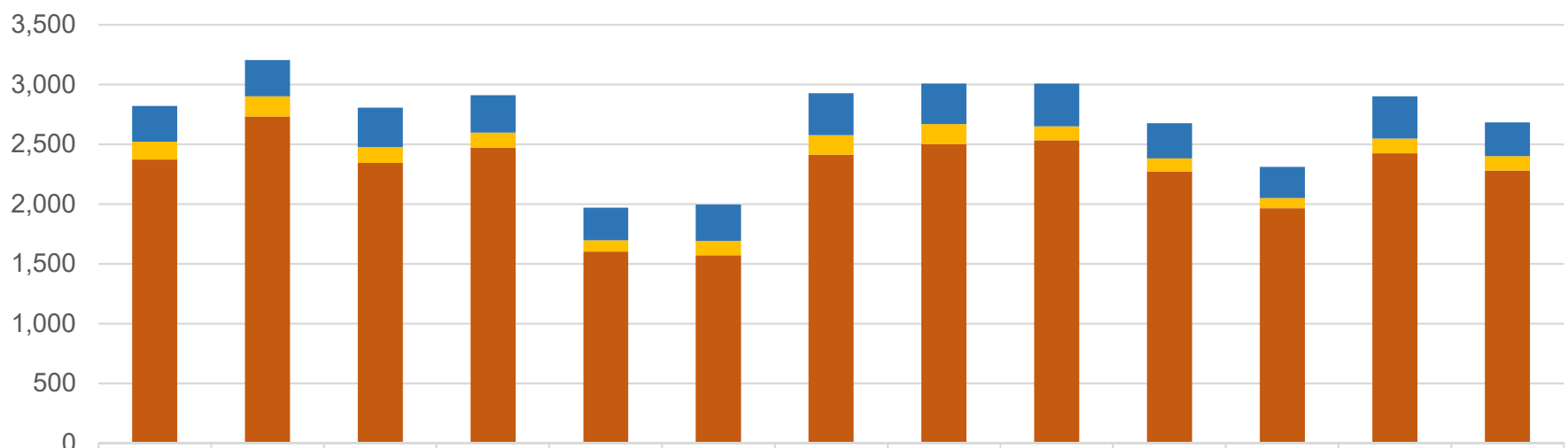
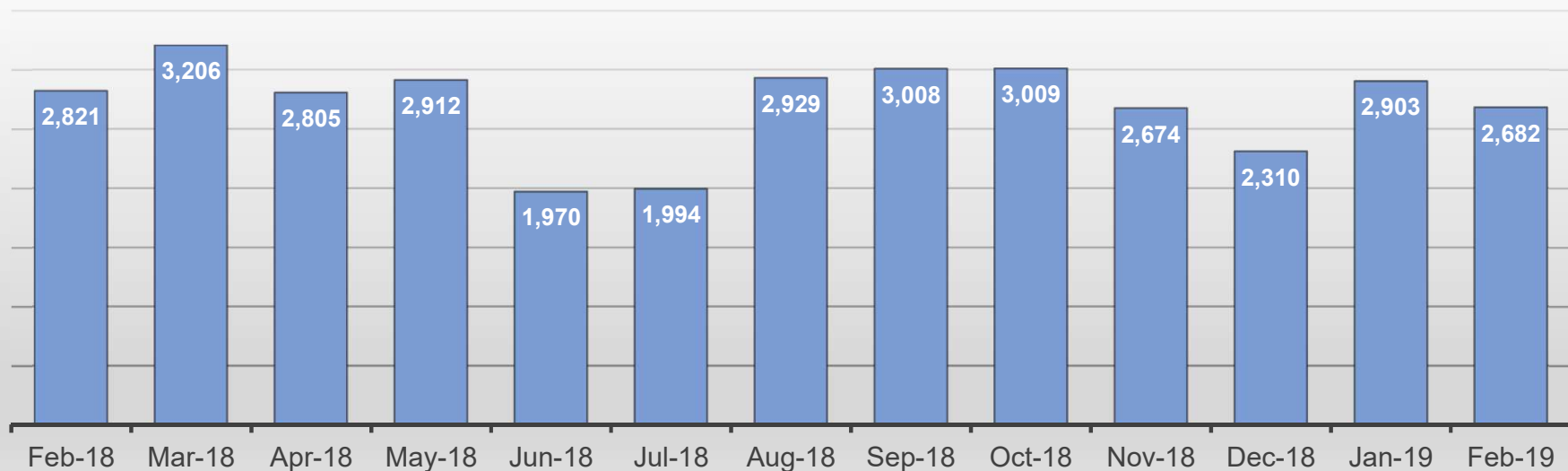


Outcome III: Disposition of Child Abuse and Neglect Reports (February 2018 – February 2019)

What was the final disposition of closed investigations during the month?

DIVISION OF FAMILY & CHILDREN SERVICES

Unsubstantiated

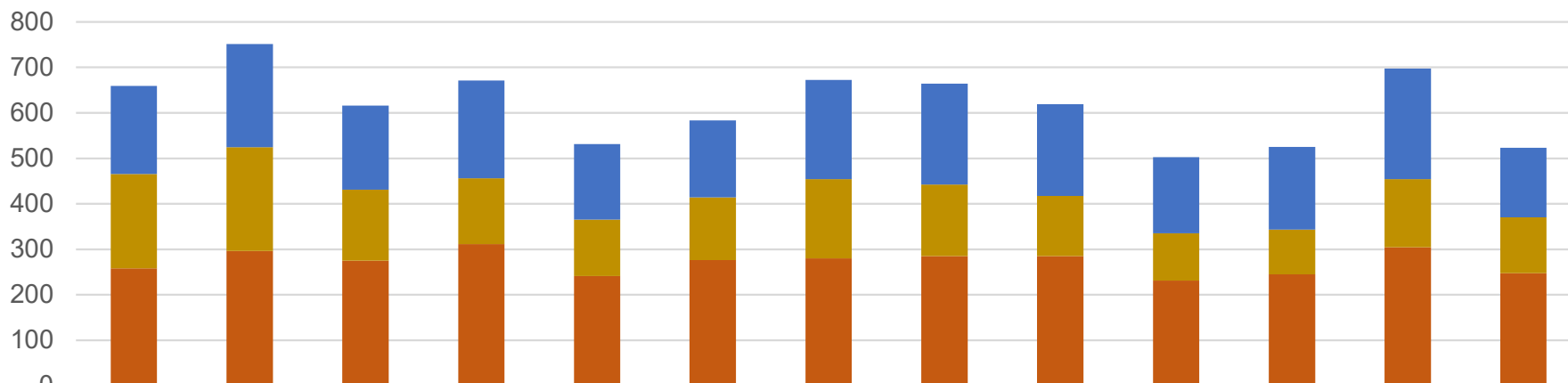
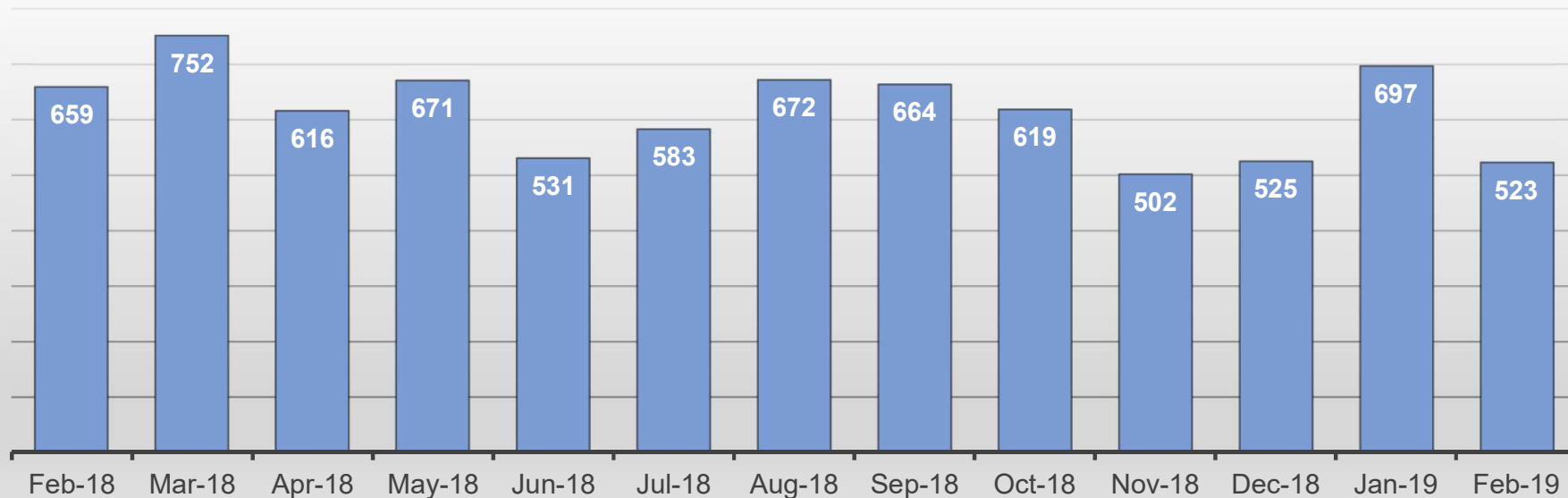


	Feb-18	Mar-18	Apr-18	May-18	Jun-18	Jul-18	Aug-18	Sep-18	Oct-18	Nov-18	Dec-18	Jan-19	Feb-19
Family Preservation	301	303	329	315	274	302	354	340	360	293	261	356	283
Foster Care	149	172	133	125	94	122	163	169	116	109	85	124	120
Closed Investigation	2,371	2,731	2,343	2,472	1,602	1,570	2,412	2,499	2,533	2,272	1,964	2,423	2,279

Outcome IV: Subsequent Case-Types of Investigations (February 2018 – February 2019)

DIVISION OF FAMILY & CHILDREN SERVICES

Substantiated:



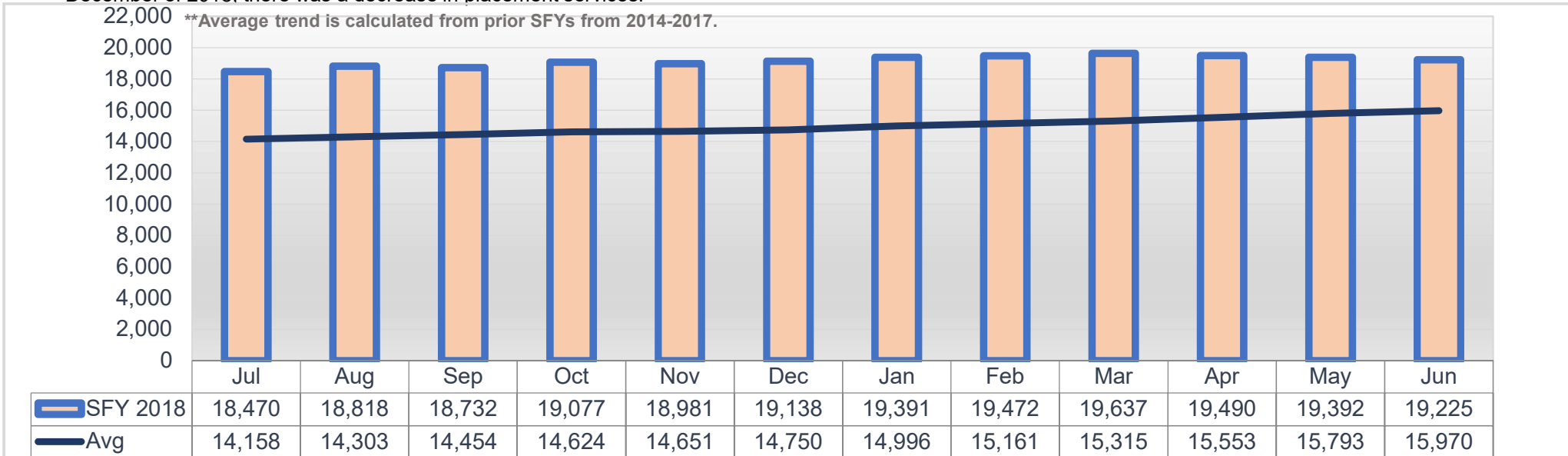
	Feb-18	Mar-18	Apr-18	May-18	Jun-18	Jul-18	Aug-18	Sep-18	Oct-18	Nov-18	Dec-18	Jan-19	Feb-19
Family Preservation	194	228	185	215	166	169	218	222	202	167	182	243	153
Foster Care	207	228	156	145	124	138	174	157	132	104	98	150	123
Closed Investigation	258	296	275	311	241	276	280	285	285	231	245	304	247

Outcome IV: Subsequent Case-Types of Investigations (February 2018 – February 2019)

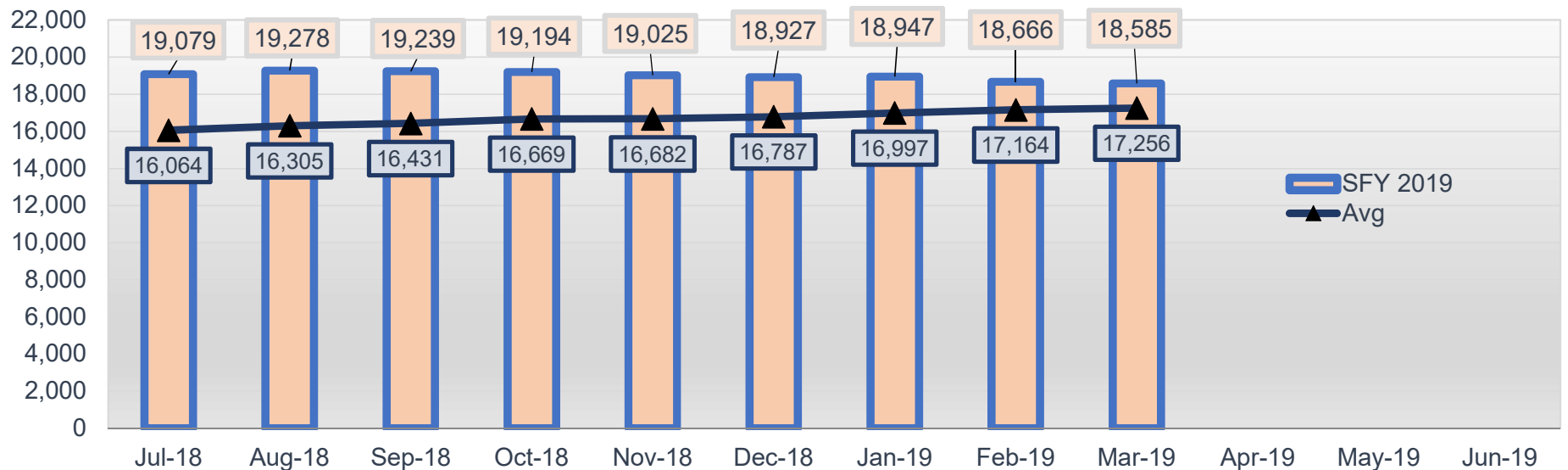
DIVISION OF FAMILY & CHILDREN SERVICES

How many children were involved placement services for each month during the State Fiscal Year?

The average trend for the past four years shows a gradual increase (low slope) in cases. The placement services include continued collaboration with families after out of home care may have ended as well as those who are in out of home care with DFCS Age 0 - 21. For 4 months of the SFY 2019 from September – December of 2018, there was a decrease in placement services.

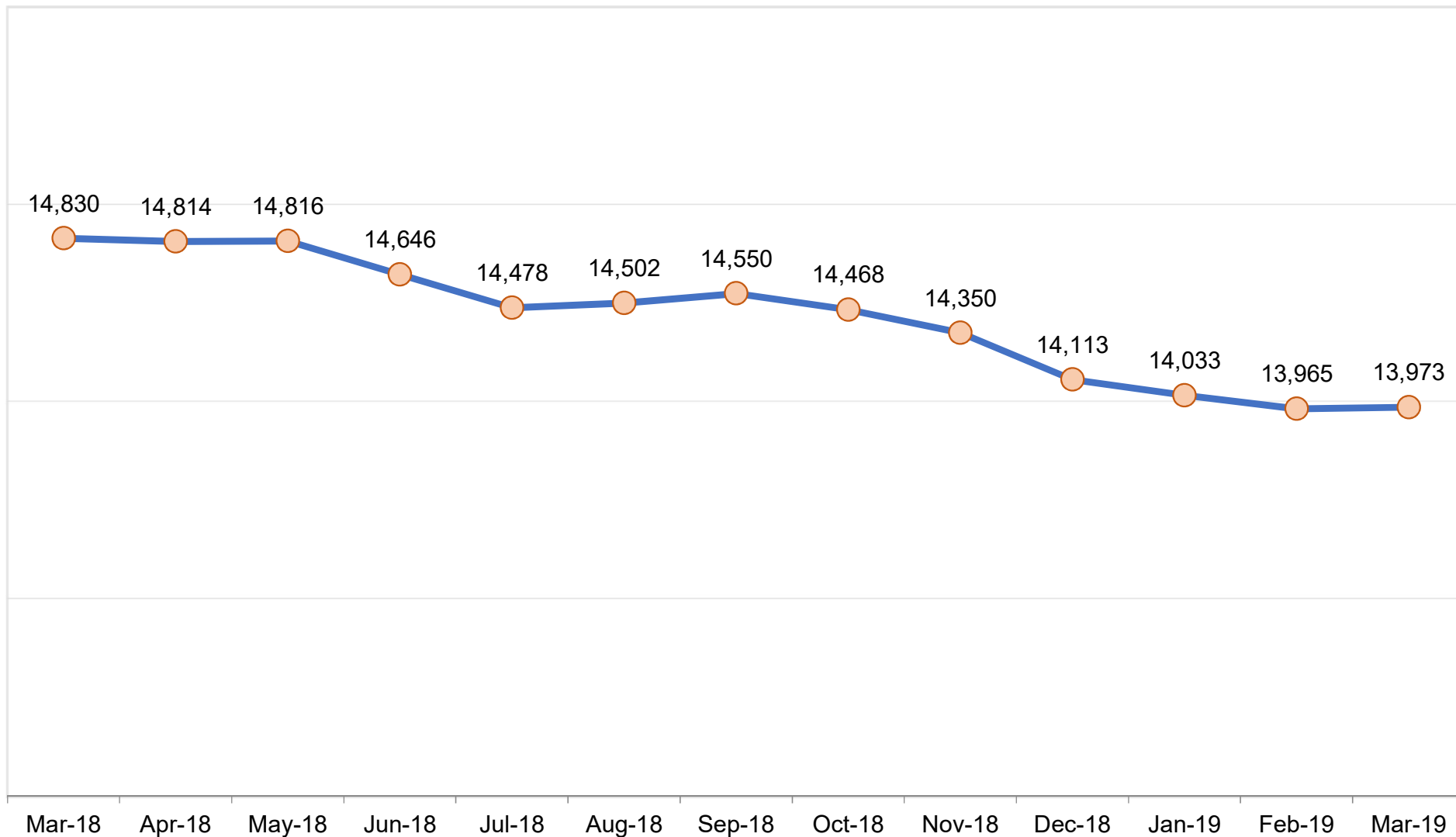


****Average trend is calculated from prior SFYs from 2015-2018.**



Outcome V: Number of Children in Placement Services (State Fiscal Year 2019 To Date)

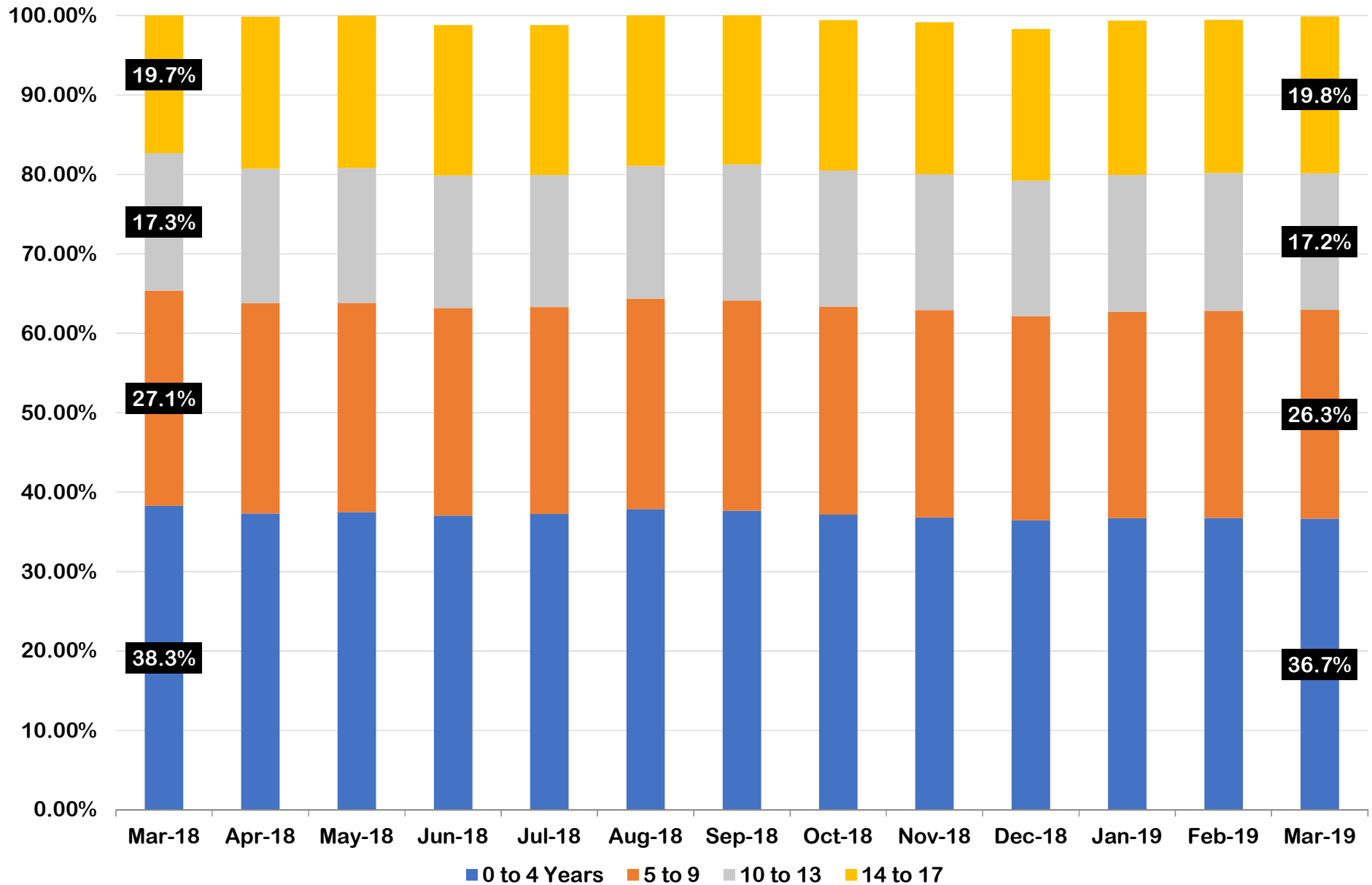
How many children were in Foster Care under the age of 18?



The downward trend reveals an increase in children exiting Foster Care from June 2018 – July 2018 and October 2018 – February 2019.

DIVISION OF FAMILY & CHILDREN SERVICES

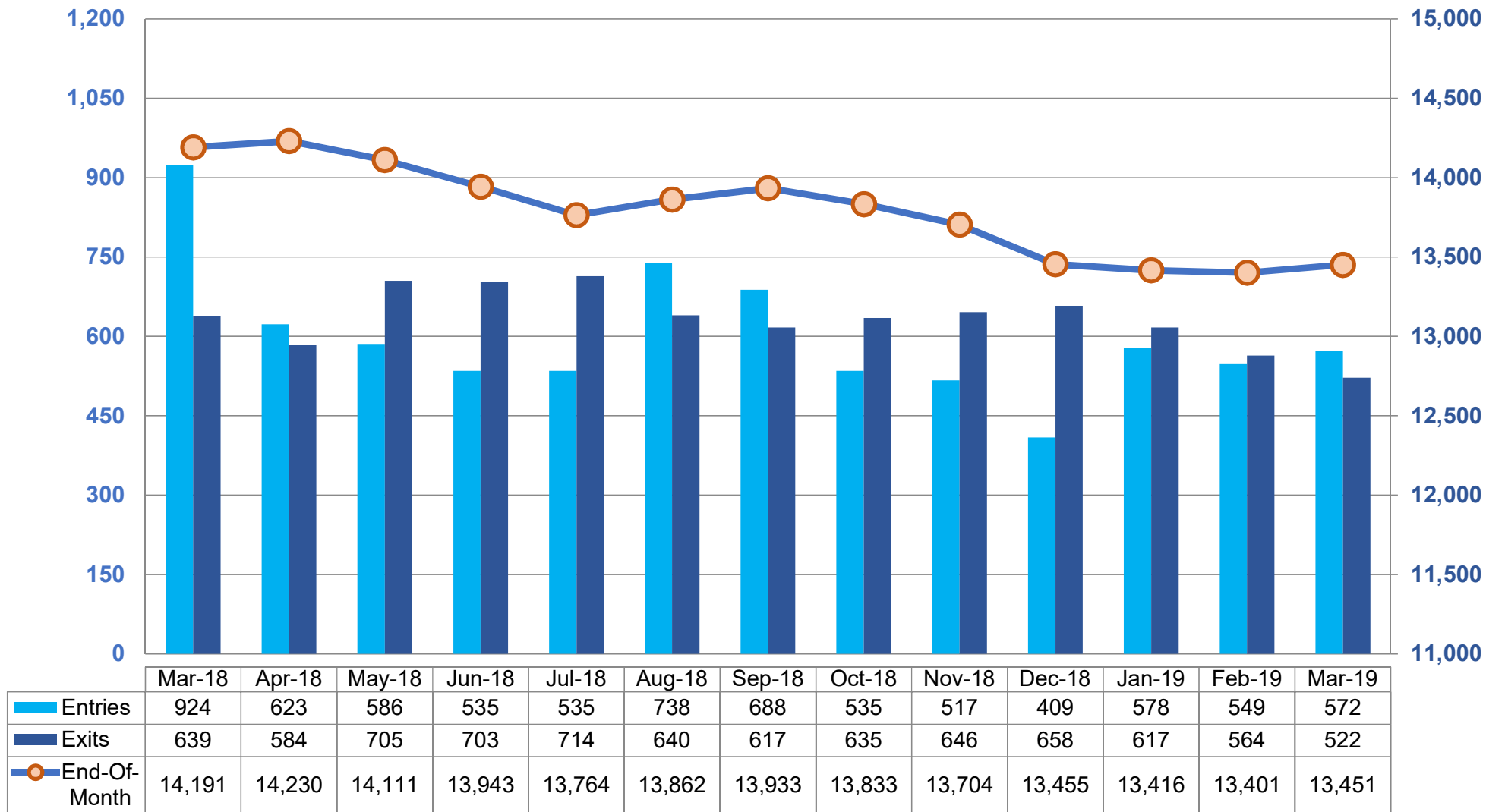
Has the age distribution of the foster population changed much over the last year?



Outcome VI-A: Children in DFCS Custody Under the Age of 18 by Age Group (March 2018 – March 2019)

DIVISION OF FAMILY & CHILDREN SERVICES

How many children are moving in and out of Foster Care? How many remain in care on the last day?

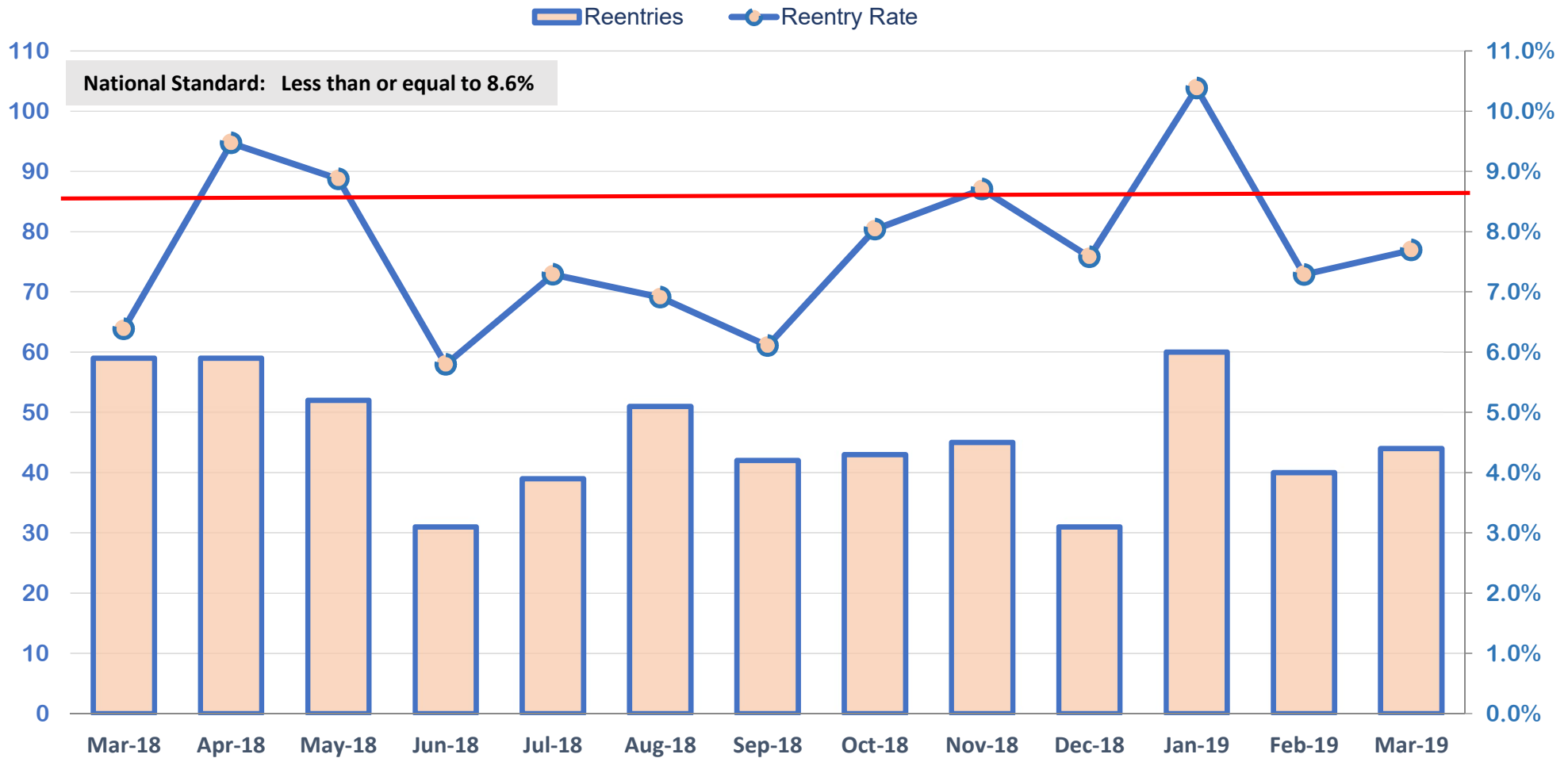


Outcome VII: Comparison of Foster Care Entries and Exits (March 2018 – March 2019)

**Reentries that occur within the same month are not double counted in the entries and exits on this chart. This chart represents unique population and movement into custody during the month.

DIVISION OF FAMILY & CHILDREN SERVICES

How many children were in a prior episode within twelve months of the current episode?

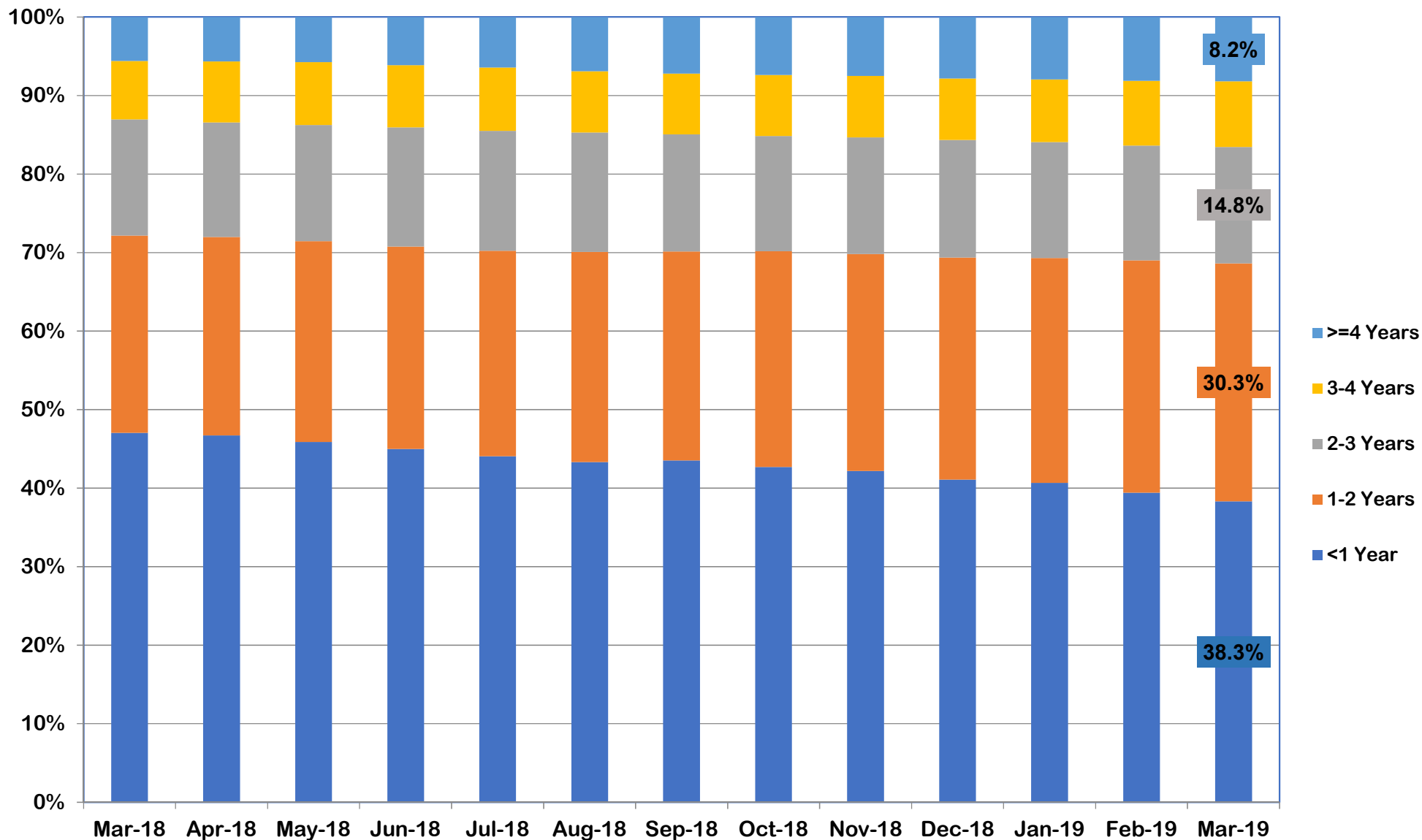


Mar-18	Apr-18	May-18	Jun-18	Jul-18	Aug-18	Sep-18	Oct-18	Nov-18	Dec-18	Jan-19	Feb-19	Mar-19
59	59	52	31	39	51	42	43	45	31	60	40	44
6.4%	9.5%	8.9%	5.8%	7.3%	6.9%	6.1%	8.0%	8.7%	7.6%	10.4%	7.3%	7.7%

Outcome VIII: Foster Care Re-Entries (March 2018 – March 2019)

DIVISION OF FAMILY & CHILDREN SERVICES

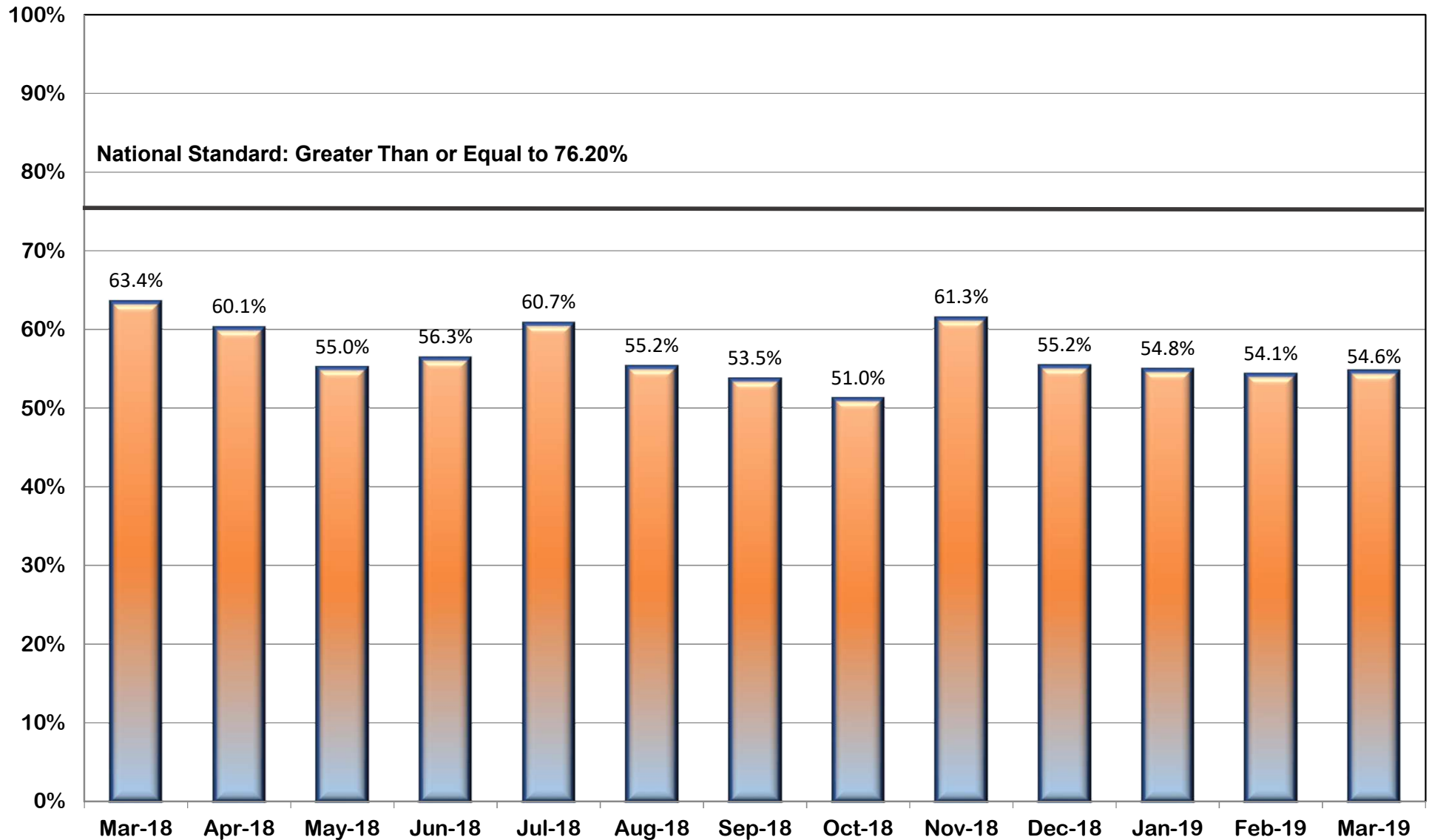
What percentage of foster children have been in care for less than a year, less than 2 years . . . each month?



Outcome IX: Foster Care Length of Stay (March 2018 – March 2019)

DIVISION OF FAMILY & CHILDREN SERVICES

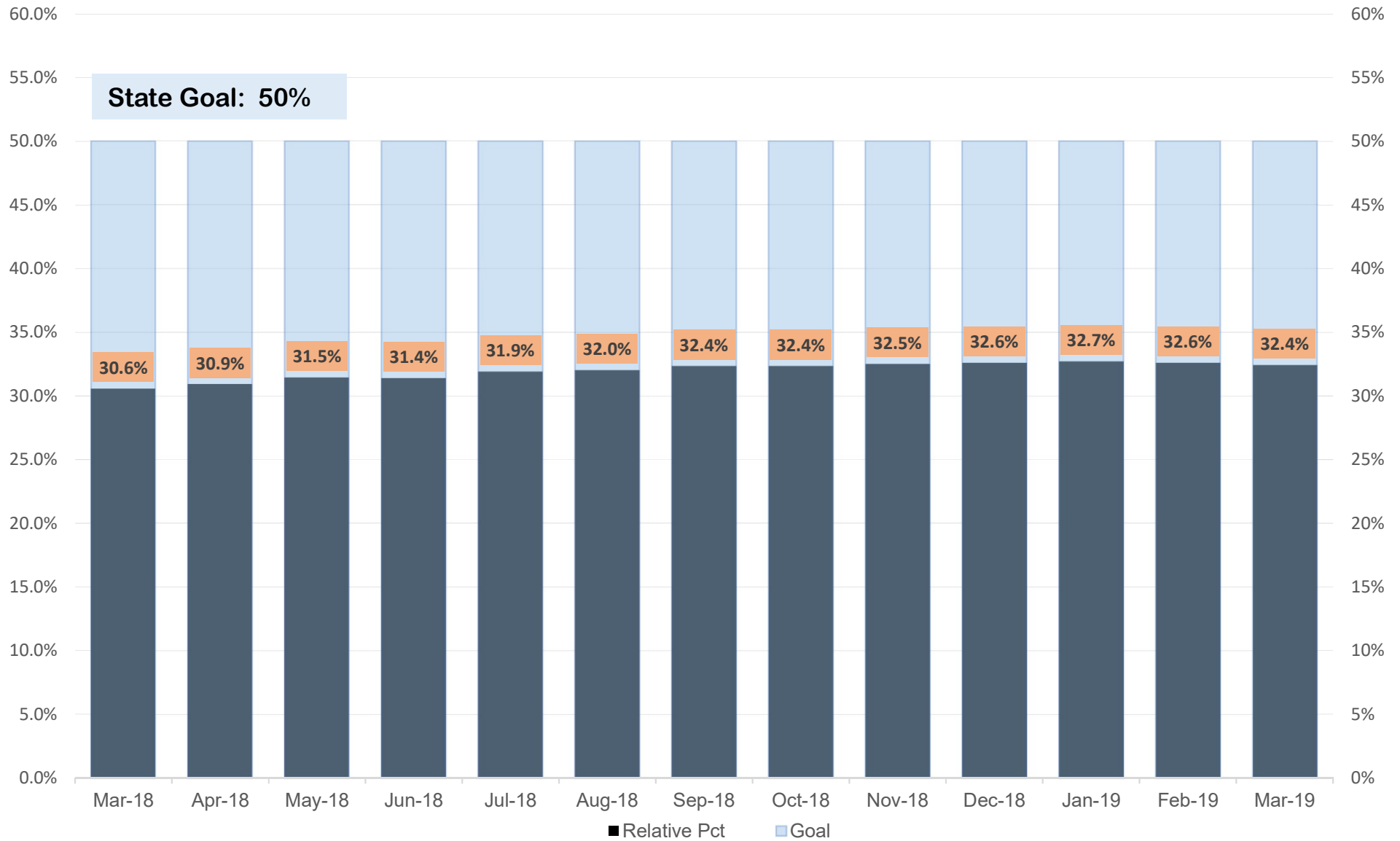
What percentage of reunifications occurred within twelve (12) months of the child entering foster care?



Outcome X: Length of Time to Reunification (March 2018 – March 2019)

DIVISION OF FAMILY & CHILDREN SERVICES

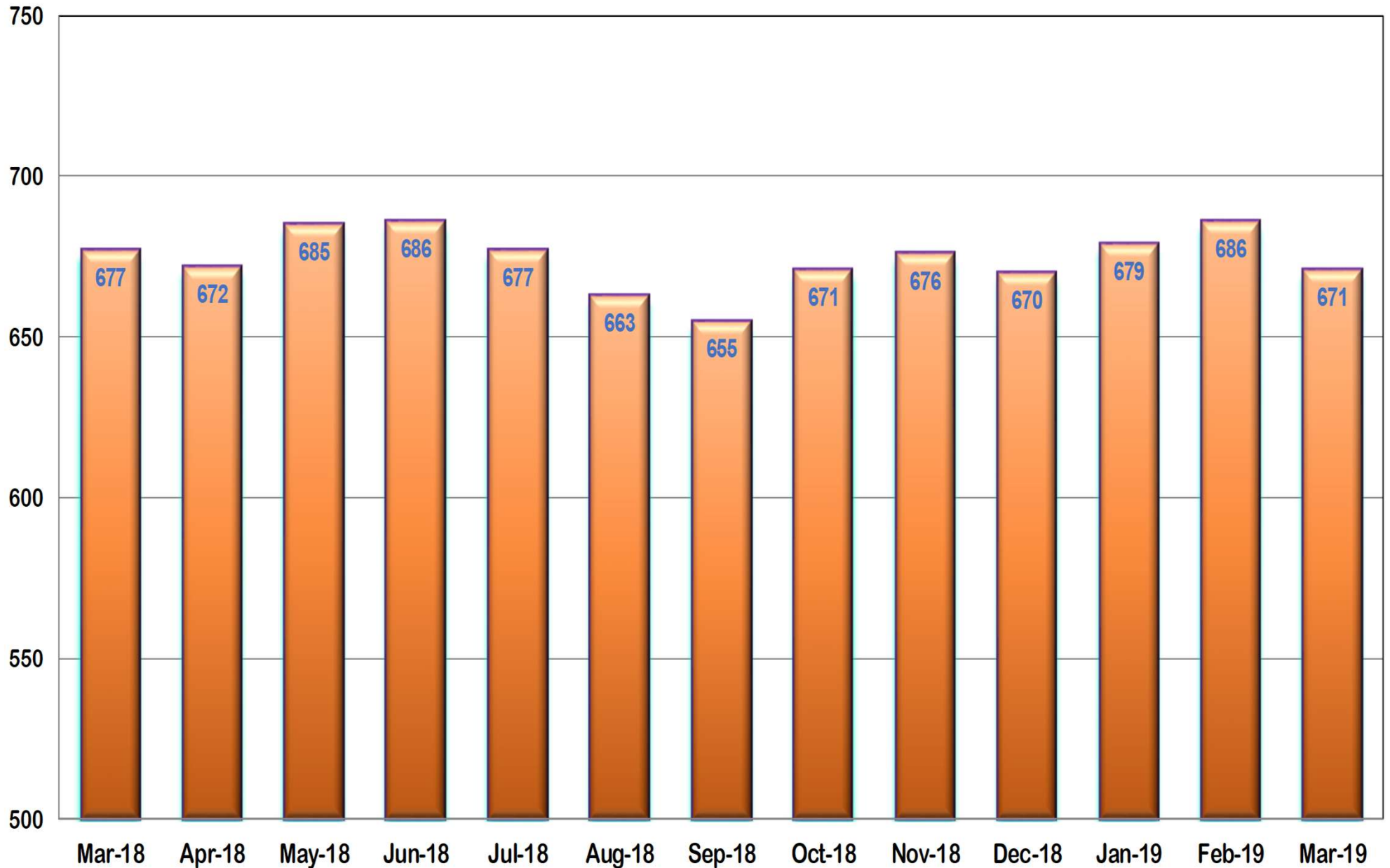
What percentage of children in Foster Care were placed with a relative during the month?



Outcome XI: Percent of Children Placed with Relatives (March 2018 – March 2019)

DIVISION OF FAMILY & CHILDREN SERVICES

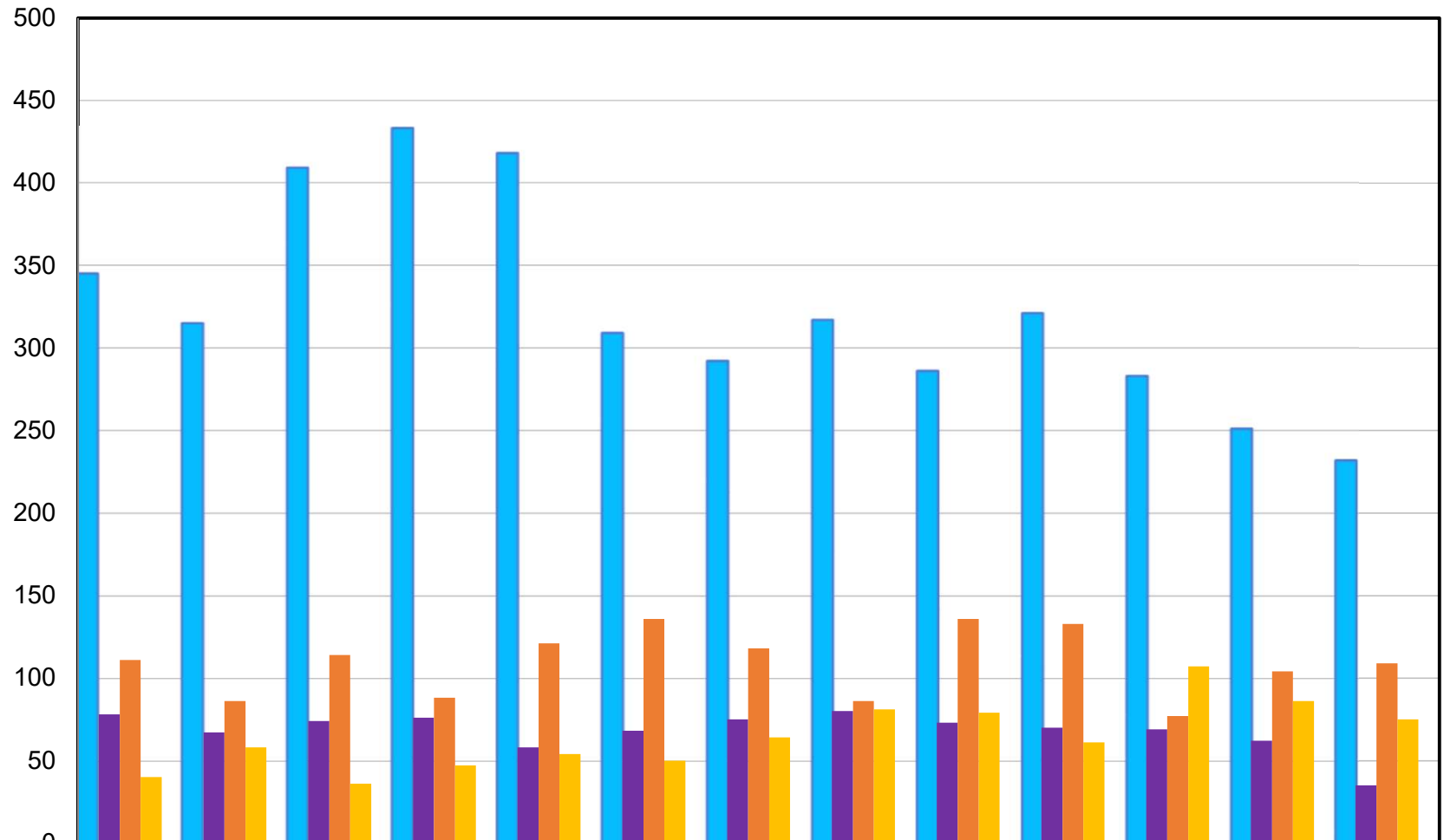
How many children remained in Foster Care after the age of 18?



Outcome XII: Extended Youth Services (March 2018 – March 2019)

DIVISION OF FAMILY & CHILDREN SERVICES

How many children in Foster Care were discharged to a positive permanency during the month?

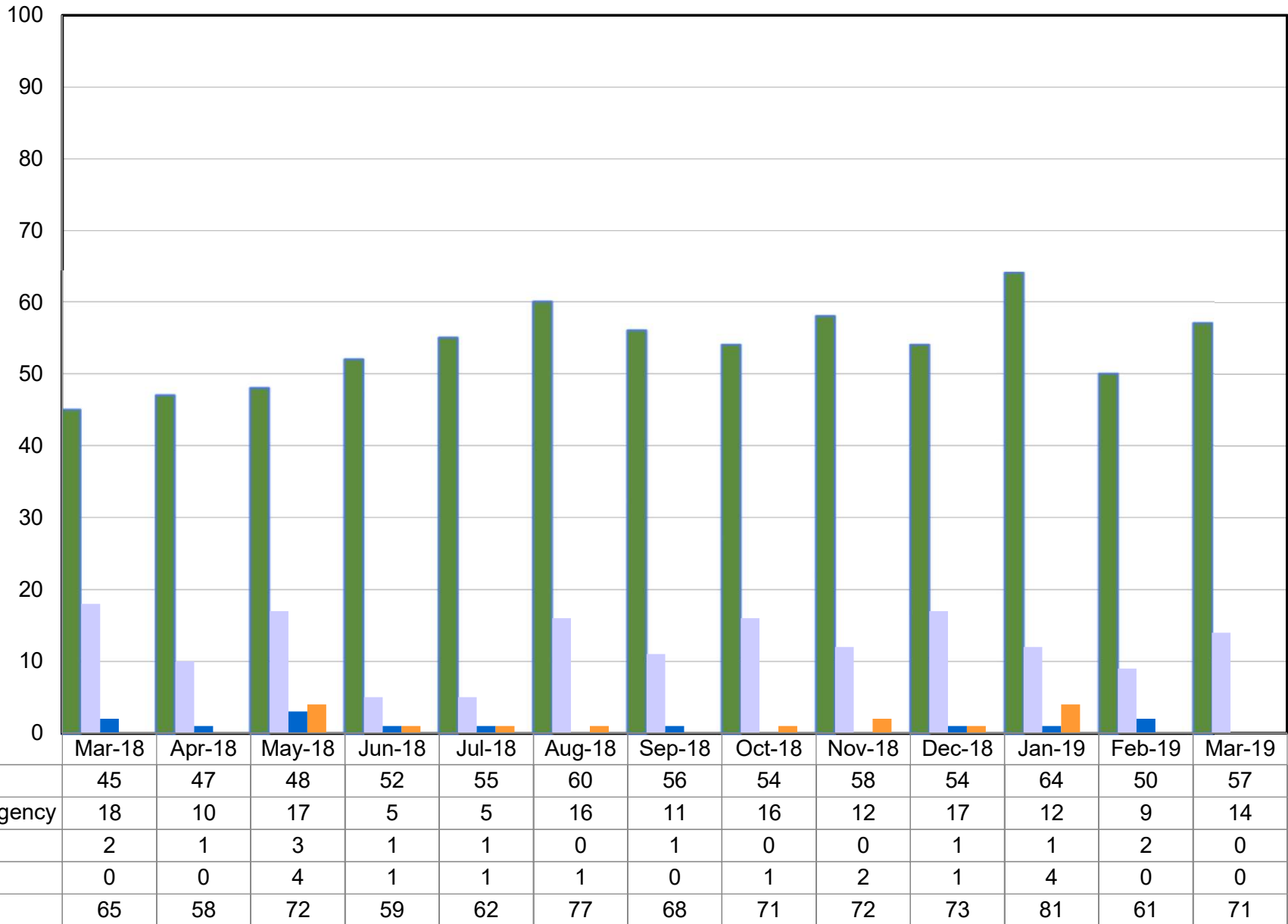


	Mar-18	Apr-18	May-18	Jun-18	Jul-18	Aug-18	Sep-18	Oct-18	Nov-18	Dec-18	Jan-19	Feb-19	Mar-19
Reunification	345	315	409	433	418	309	292	317	286	321	283	251	232
Living With Other Relative(s)	78	67	74	76	58	68	75	80	73	70	69	62	35
Finalized Adoption	111	86	114	88	121	136	118	86	136	133	77	104	109
Guardianship	40	58	36	47	54	50	64	81	79	61	107	86	75
Positive Permanency	574	526	633	644	651	563	549	564	574	585	536	503	451

Outcome XIII: Number of Discharges (March 2018 – March 2019)

DIVISION OF FAMILY & CHILDREN SERVICES

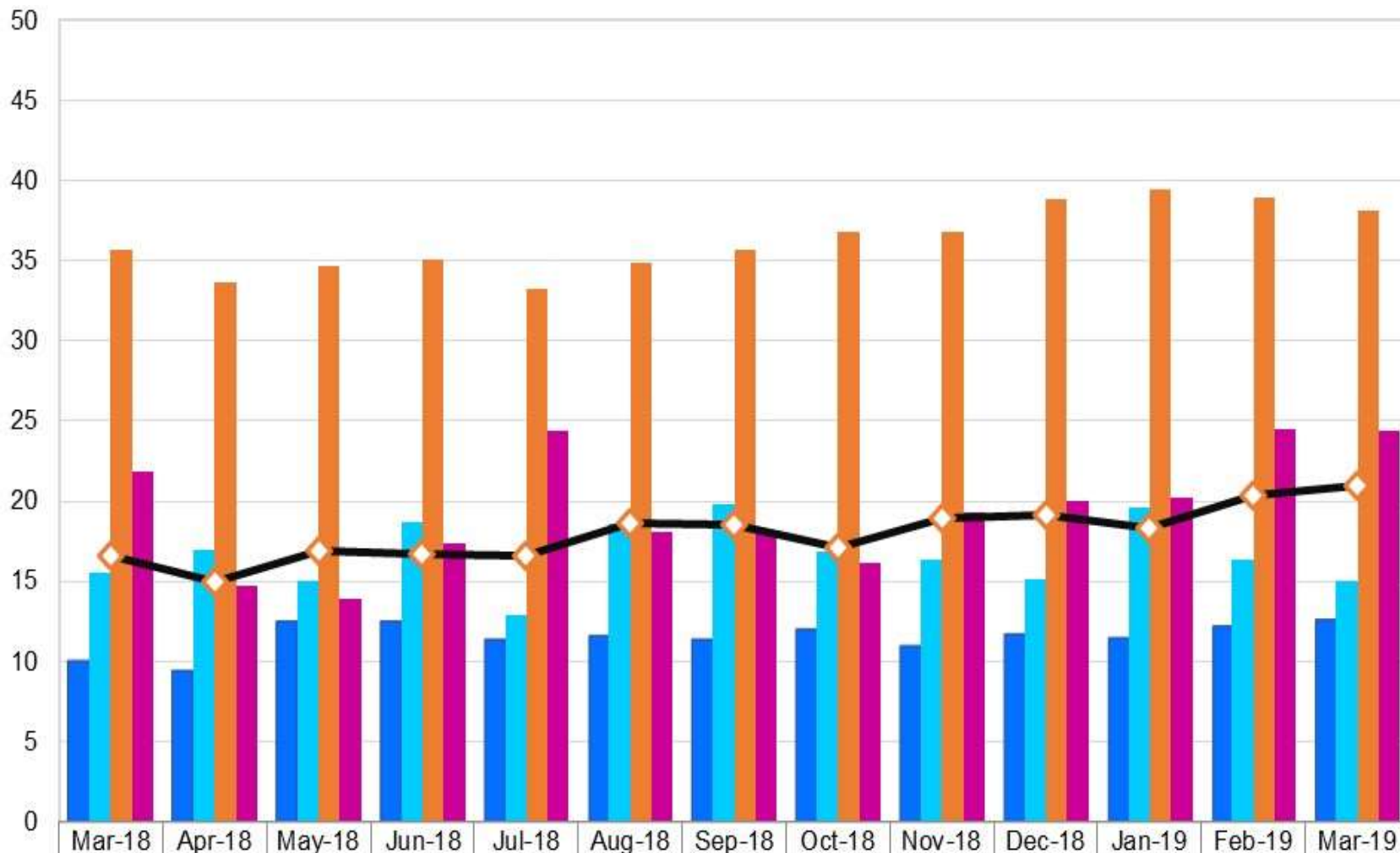
How many children in Foster Care were discharged to another permanency during the month?



Outcome XIII: Number of Discharges (March 2018 – March 2019)

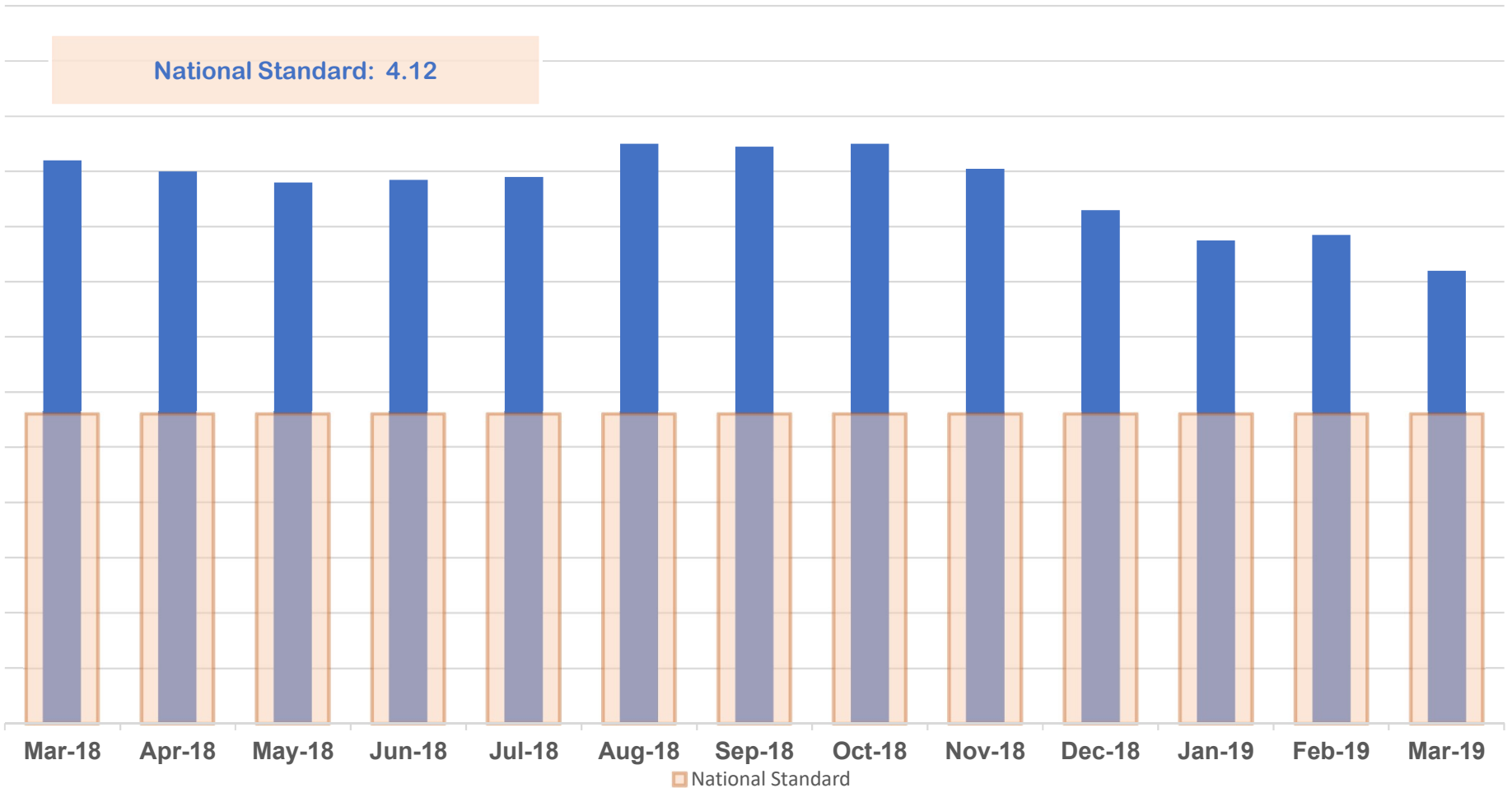
DIVISION OF FAMILY & CHILDREN SERVICES

What is the average time in months for a foster child to reach positive permanency?



1-Reunification	10.1	9.5	12.5	12.6	11.4	11.6	11.4	12.0	11.0	11.7	11.5	12.3	12.7
2-Living with Relatives	15.5	17.0	15.0	18.7	12.9	18.6	19.8	16.8	16.4	15.1	19.6	16.4	15.1
3-Adoption	35.7	33.6	34.6	35.1	33.2	34.8	35.6	36.8	36.8	38.9	39.5	38.9	38.1
5-Guardianship	21.9	14.7	13.9	17.4	24.4	18.1	17.9	16.2	19.3	20.0	20.2	24.5	24.4
Positive Permanency	16.6	15.0	16.9	16.7	16.6	18.6	18.5	17.1	19.0	19.2	18.3	20.4	20.9

How is the state of Georgia performing on the federal measure of Placement Stability?



Mar-18	Apr-18	May-18	Jun-18	Jul-18	Aug-18	Sep-18	Oct-18	Nov-18	Dec-18	Jan-19	Feb-19	Mar-19
5.04	5.00	4.96	4.97	4.98	5.10	5.09	5.10	5.01	4.86	4.75	4.77	4.64

Appendices

APPENDIX A

Regional Chart of Outcome VI

**Children in DFCS Custody Under the Age of 18
(March 2018 – March 2019)**

DIVISION OF FAMILY & CHILDREN SERVICES

Outcome VI: Children in DFCS Custody Under the Age of 18 (By Region) (March 2018 – March 2019)

Region	Mar-18	Apr-18	May-18	Jun-18	Jul-18	Aug-18	Sep-18	Oct-18	Nov-18	Dec-18	Jan-19	Feb-19	Mar-19
1	1,516	1,526	1,496	1,471	1,426	1,450	1,487	1,482	1,496	1,446	1,423	1,405	1,392
2	970	974	985	978	1,004	995	996	982	976	976	973	994	998
3	986	974	959	965	960	967	991	1,007	1,017	1,040	1,045	1,078	1,062
4	1,143	1,141	1,162	1,163	1,132	1,119	1,102	1,104	1,088	1,051	1,032	1,028	1,057
5	1,210	1,226	1,226	1,201	1,184	1,193	1,202	1,196	1,156	1,142	1,131	1,108	1,106
6	776	770	767	744	730	729	718	710	692	686	664	645	650
7	696	716	713	720	733	758	770	756	738	721	715	704	708
8	744	745	748	748	759	763	762	760	741	735	720	728	739
9	589	587	587	574	572	566	561	543	533	500	499	488	472
10	771	775	759	756	749	753	767	769	778	782	790	796	804
11	1,265	1,261	1,261	1,251	1,257	1,250	1,246	1,236	1,234	1,210	1,245	1,237	1,226
12	1,006	1,000	1,014	1,004	983	982	978	977	954	936	933	941	957
13	1,482	1,447	1,460	1,400	1,371	1,358	1,344	1,340	1,337	1,317	1,297	1,283	1,267
14	1,676	1,672	1,679	1,671	1,618	1,619	1,626	1,606	1,610	1,571	1,566	1,530	1,535
Statewide	14,830	14,814	14,816	14,646	14,478	14,502	14,550	14,468	14,350	14,113	14,033	13,965	13,973

APPENDIX B

Regional Chart of Outcome XIV

**Placement Stability Performance Coefficient
(March 2018 – March 2019)**

National Standard = 4.12

Desired Goal to Meet the PIP = 6.01

DIVISION OF FAMILY & CHILDREN SERVICES

Outcome VI: Placement Stability for Children in DFCS Custody Under the Age of 18 (By Region) (March 2018 – March 2019)

Region	Mar-18	Apr-18	May-18	Jun-18	Jul-18	Aug-18	Sep-18	Oct-18	Nov-18	Dec-18	Jan-19	Feb-19	Mar-19
1	5.72	5.85	5.81	5.63	5.50	5.66	5.75	5.73	5.42	5.29	5.18	5.31	5.06
2	5.75	5.87	5.63	5.59	5.61	5.52	5.42	5.38	5.32	4.83	4.66	4.61	4.50
3	5.19	5.21	5.18	5.28	4.98	4.98	4.86	4.87	4.49	4.30	4.19	4.24	3.83
4	4.36	4.05	3.86	3.72	3.61	3.57	3.58	3.89	4.06	4.01	4.15	4.09	3.94
5	5.33	5.36	5.53	5.64	5.68	5.69	5.71	5.66	5.79	5.66	5.41	5.25	5.29
6	4.16	3.97	3.86	4.31	4.36	4.74	4.65	4.91	4.90	4.71	5.10	5.99	5.46
7	3.21	3.15	3.02	3.23	3.31	3.51	3.50	3.45	3.30	3.34	3.38	3.40	3.40
8	2.86	2.89	3.10	3.19	3.54	3.96	4.02	3.81	3.91	4.11	4.03	3.79	3.93
9	3.59	3.14	3.36	3.87	4.11	4.00	3.81	3.86	3.88	3.85	3.89	3.89	3.82
10	3.84	3.56	3.00	3.22	3.05	2.93	3.00	2.97	3.30	3.31	3.71	4.10	4.23
11	4.29	4.34	4.42	4.26	4.38	4.54	4.33	4.16	3.96	3.79	3.66	3.72	3.30
12	5.16	4.89	4.80	4.81	4.80	5.27	5.54	5.34	5.12	4.66	4.55	4.48	4.64
13	6.62	6.70	6.74	6.62	6.87	7.01	6.79	7.32	7.21	6.87	6.78	6.38	6.43
14	6.40	6.50	6.56	6.43	6.43	6.63	6.72	6.55	6.45	6.19	5.69	5.68	5.65
Statewide	5.04	5.00	4.96	4.97	4.98	5.10	5.09	5.10	5.01	4.86	4.75	4.77	4.64