

Monthly Measures and Results for January 2019*

*(Reflects Safety Outcomes as of November 30, 2018 And
Permanency Outcomes as of December 31, 2018)
With Appendices

This report is produced by the Data Unit. For questions or comments, you may contact one of the following:
Samantha Adams, Director (Samantha.Adams@dhs.ga.gov)
John Roach, Unit Manager (John.Roach@dhs.ga.gov)
Vickie Fluellen, Business Support Analyst 3 (Vickie.Fluellen@dhs.ga.gov)

- Part I: Definitions And Data Sources contained in Report**
- Part II: Safety Outcomes**
- Part III: Permanency/Well-being Outcomes**
- Part IV: Appendices**
 - A. Regional Charts of Outcome V (Trend of Unique Children in the Legal Custody of DFCS Under the Age of 18)**
 - B. Regional Charts of Outcome XIV: Stability Performance Coefficient (Number of Moves/Number of Days in Custody * 1000)**

***There are no revisions to this document to date.

DIVISION OF FAMILY & CHILDREN SERVICES

SAFETY: Children are first and foremost, protected from abuse and neglect.

Outcome I: Child Protective Services Cases

Count of unique CPS Investigations and Family Preservation (Ongoing) stages open at any point during the month vs. Average count of unique CPS Investigations, Family Preservation, and Family Support stages for the prior four state fiscal years. Outcome is calculated 45 days prior to the date of report.

Outcome 1A: Family Support Cases Only: Count of unique Family Support stages open at any point during the month vs average of four prior state fiscal years..

Outcome 1B: Family Preservation Cases Only: Count of unique Family Preservation stages open at any point during the month vs average of four prior state fiscal years..

Outcome 1C: Investigation Cases Only: Count of unique Investigation stages open at any point during the month vs average of four prior state fiscal years.

Outcome 1C_1: Comparison of Investigations that were open at anytime during the month vs investigations opened during the month vs the average of the prior state fiscal years at any point in time.

Sources: SHINES

Outcome II: Recurrence of Substantiated Child Maltreatment

Of all the children who were victims of substantiated maltreatment in the first 6 months of the year, the percentage that had substantiated maltreatment within the following 6 months. Outcome is calculated 45 days prior to the date of report. Each month is calculated as a rolling calendar year. *National Standard: less than or equal to 5.40%*

Source: SHINES

Outcome III: Disposition of Child Abuse and Neglect Reports

Chart reflects the disposition of reports received in a particular month. Data includes count of Family Support, Investigations -- Substantiated Investigations and Unsubstantiated Investigations, and Screen-outs. Outcome is calculated 45 days prior to the date of report.

Source: SHINES

DIVISION OF FAMILY & CHILDREN SERVICES

PERMANENCY: Children have permanency and stability in their living situations.

Outcome IV: Subsequent Case-type of Investigations by Disposition

Chart reflects the disposition of investigations received in a particular month by the subsequent case type. Charts are broken out by substantiated and unsubstantiated investigation and their subsequent track assignment or final disposition. Outcome is calculated 45 days prior to the date of report.

Source: SHINES

Outcome V: Number of Child Placement Services Cases

Count of unique children who were involved in an open Foster Care or Adoption stage during the month. In placement services each child who is the principal (PC) is considered a case. The chart also reveals the average of the last four state fiscal years to provide the viewer with a prior glimpse of the trend in placement cases.

Source: SHINES

Outcome VI: Children in the Legal Custody of DFCS Under the Age of 18

Count of unique children who were in the legal custody of DFCS (17 years of age and under) at some point during the month.

Source: SHINES

Outcome VI-A: Age Distribution of Children in Custody: Chart is a percentage of children in DFCS Custody by age group.

Outcome VII: Comparison of Foster Care Entries & Exits

Number of children who have entered foster care and number of children who have exited foster care during the month. Total children at end of month show the number of children on the last day of the month.

Source: SHINES

Outcome VIII: Foster Care Re-entries

Of all the children who entered foster care, the percentage that were discharged from a prior episode of foster care within 12 months of the current foster care placement. National Standard: less than or equal to 8.60%.

Source: SHINES

DIVISION OF FAMILY & CHILDREN SERVICES

PERMANENCY cont'd: Children have permanency and stability in their living situations.

Outcome IX: Foster Care Length of Stay

Percentage of children by number of months in foster care during each month.

Source: SHINES

Outcome X: Length of Time to Achieve Reunification

Percentage of children who exited care during the month through reunification with their family that reunified in less than 12 months from the date of their removal. National Standard: greater than or equal to 76.20%

Source: SHINES

Outcome XI: Children Placed with Relatives

Of all children in DFCS custody, the percentage that are placed with a relative or a relative foster home.

State Target: greater than or equal to 30.00%

Source: SHINES

Outcome XII: Extended Youth Services

Number of children ages 18 – 21 who remained in the custody of DFCS beyond their birth month.

Source: SHINES

Outcome XIII: Monthly Discharges

The number of children who were discharged during the month by permanency decision divided into two charts by positive permanency vs other types.

Source: SHINES

Outcome XIII - A: Average Number of Months to Achieve Positive Permanency

Of all children in Outcome XIII, the number of months from removal (entry into foster care) until exit due to reunification, relative, adoption or guardianship..

Source: SHINES

DIVISION OF FAMILY & CHILDREN SERVICES

PERMANENCY cont'd: Children have permanency and stability in their living situations.

Outcome XIV: Placement Stability Performance (Number of Moves/Number of Days in Custody * 1000)

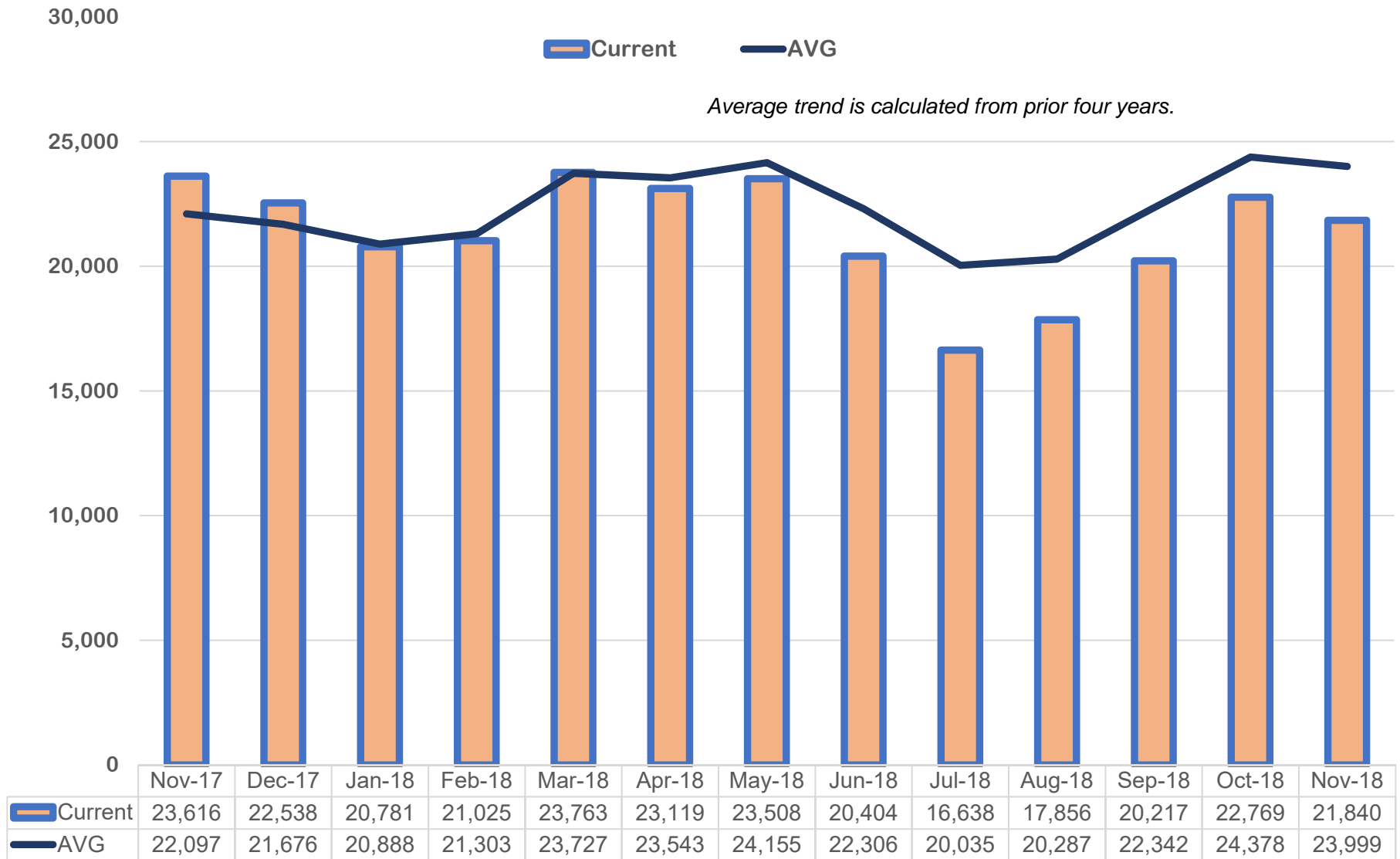
A calculated value based upon the ACF CFSR Round 3 which is part of Program Improvement. It is calculated from a rolling 12 month population of the entry cohort where the child remained in custody for over 8 days and was not 18 on the date of removal. The federal standard is 4.12.

Source: SHINES

***Note: Data may vary from month to month due to 13 month data trends being re-run over the time span for the various outcomes in this report.*

DIVISION OF FAMILY & CHILDREN SERVICES

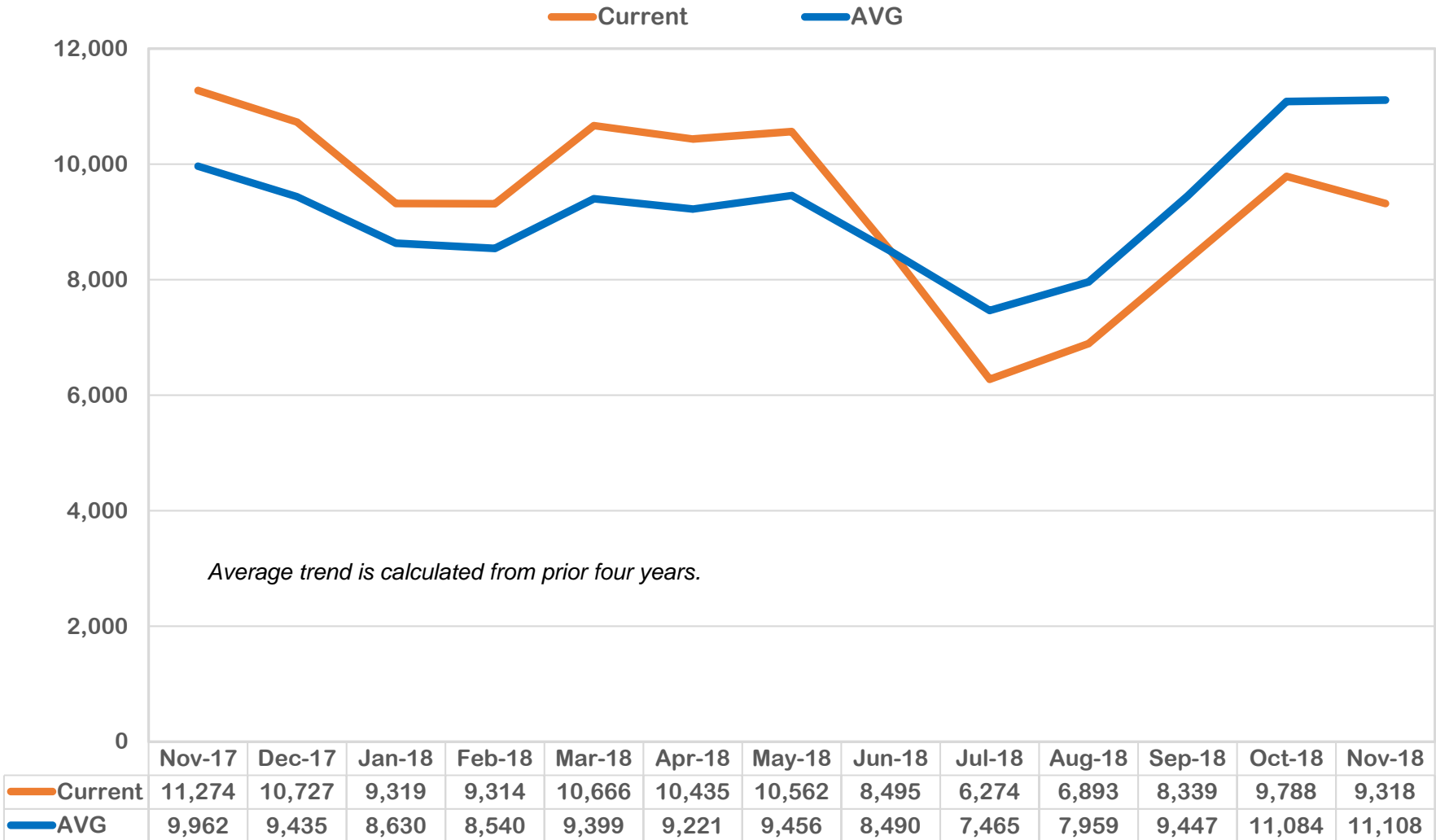
How many CPS Cases were open monthly during the last 13 months?



Outcome I: Child Protective Services Cases, (November 2017 – November 2018)

DIVISION OF FAMILY & CHILDREN SERVICES

How many Family Support Cases were open per month for the last 13 months?

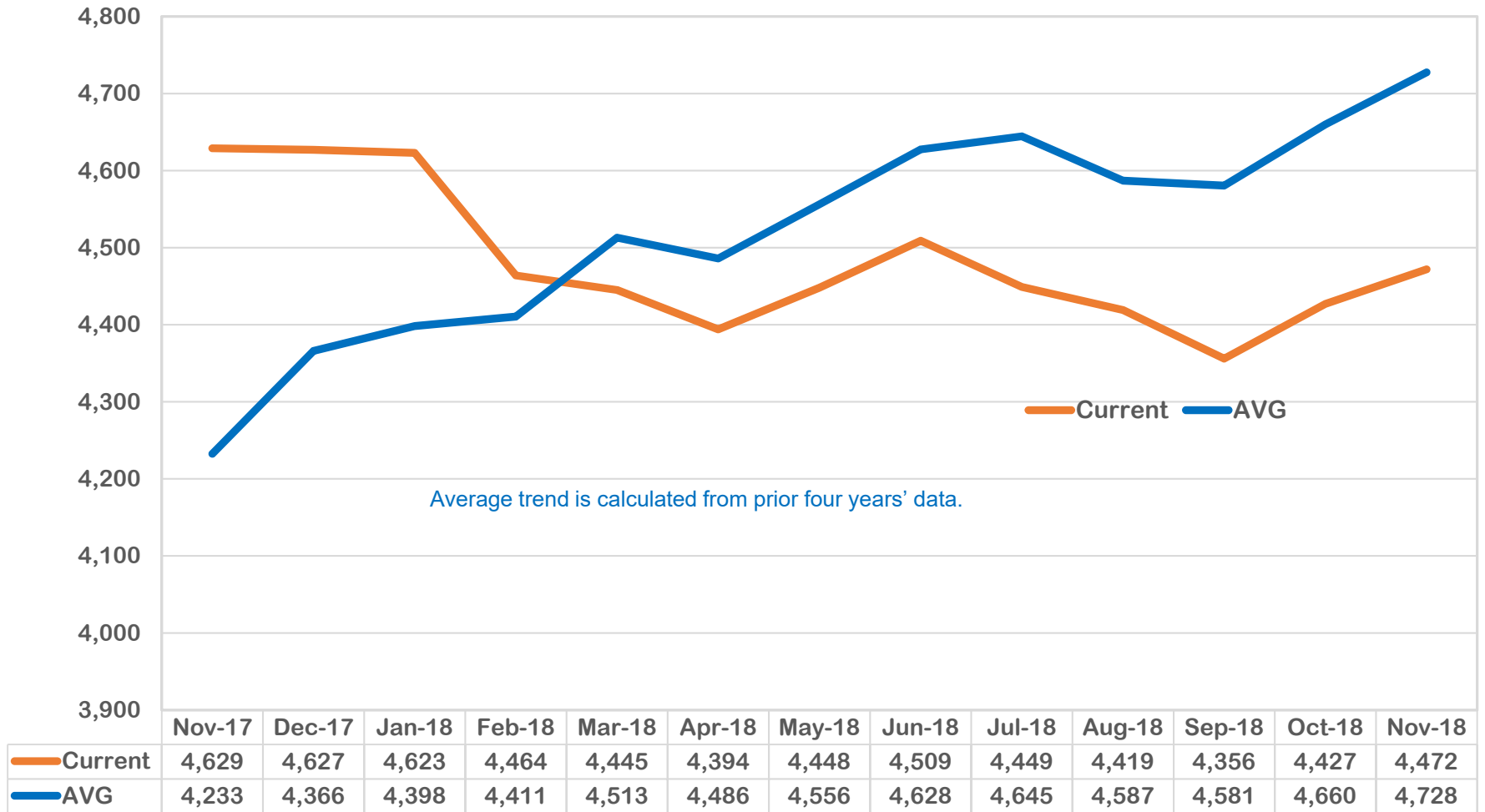


The graph above reveals a similar trend in the last 13-months compared to the average trend. During July 2018, there is a 16% decline in the number of cases when compared to average trend. This was a 26% drop from the prior month of June 2018. The trend in November 2018 decreases from the prior month and shows a 16% decrease over the average..

Outcome IA: Child Protective Services Cases Family Support Cases Only (November 2017 – November 2018)

DIVISION OF FAMILY & CHILDREN SERVICES

How many Family Preservation Cases were open per month during for the last 13 months?

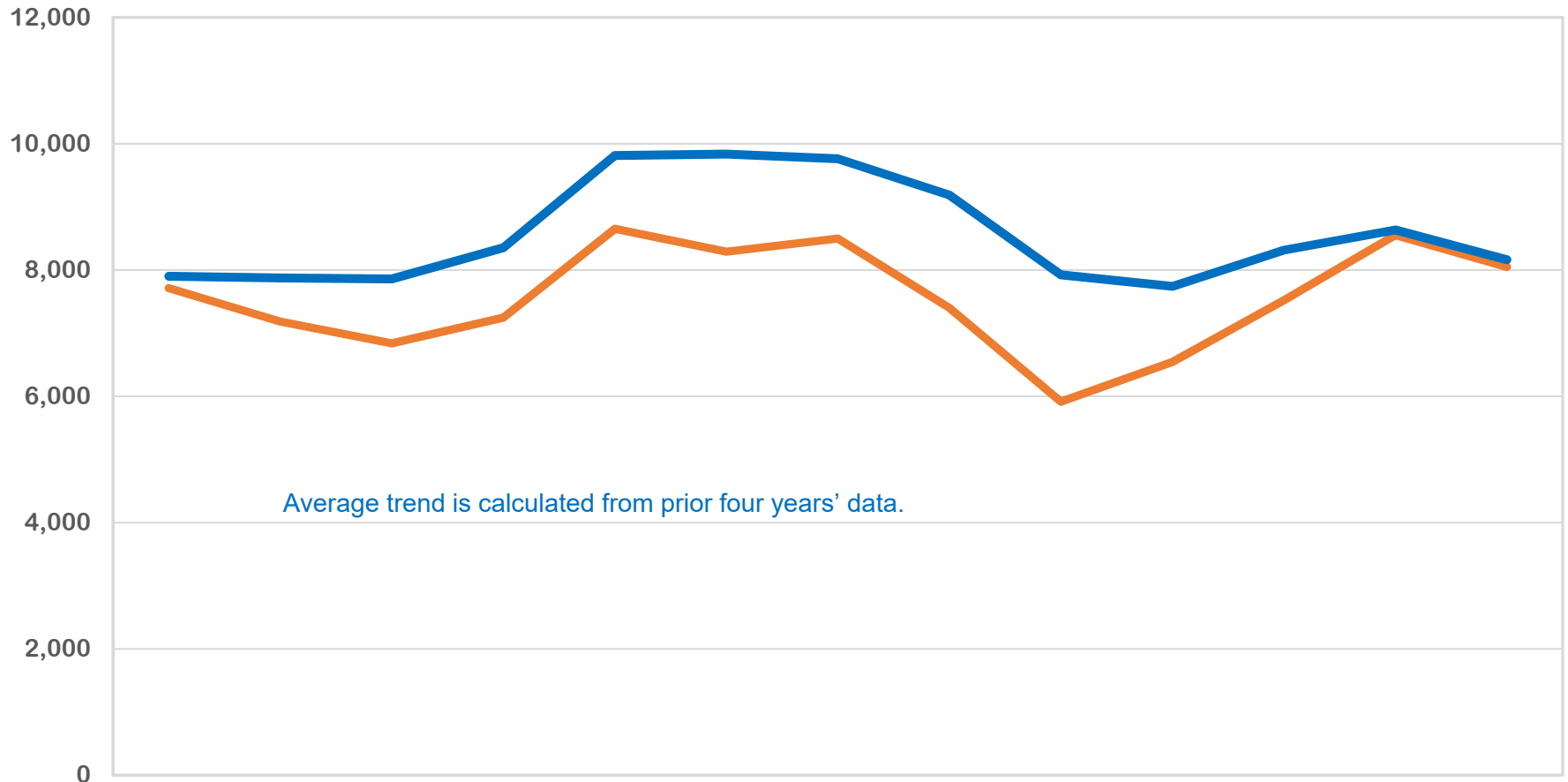


Family Preservation cases are higher than the average trend during the first 4 months. In March 2018, there is an inverse effect. In November 2018 Family Preservation cases were 5% lower than the average.

Outcome IB: Child Protective Services Cases Family Preservation Cases Only (November 2017 – November 2018)

DIVISION OF FAMILY & CHILDREN SERVICES

How many Investigation Cases were open per month for the past 13 months?



	Nov-17	Dec-17	Jan-18	Feb-18	Mar-18	Apr-18	May-18	Jun-18	Jul-18	Aug-18	Sep-18	Oct-18	Nov-18
Current	7,713	7,184	6,839	7,247	8,652	8,290	8,498	7,400	5,915	6,544	7,522	8,554	8,050
Avg	7,902	7,875	7,860	8,352	9,815	9,836	9,762	9,188	7,923	7,741	8,315	8,634	8,163

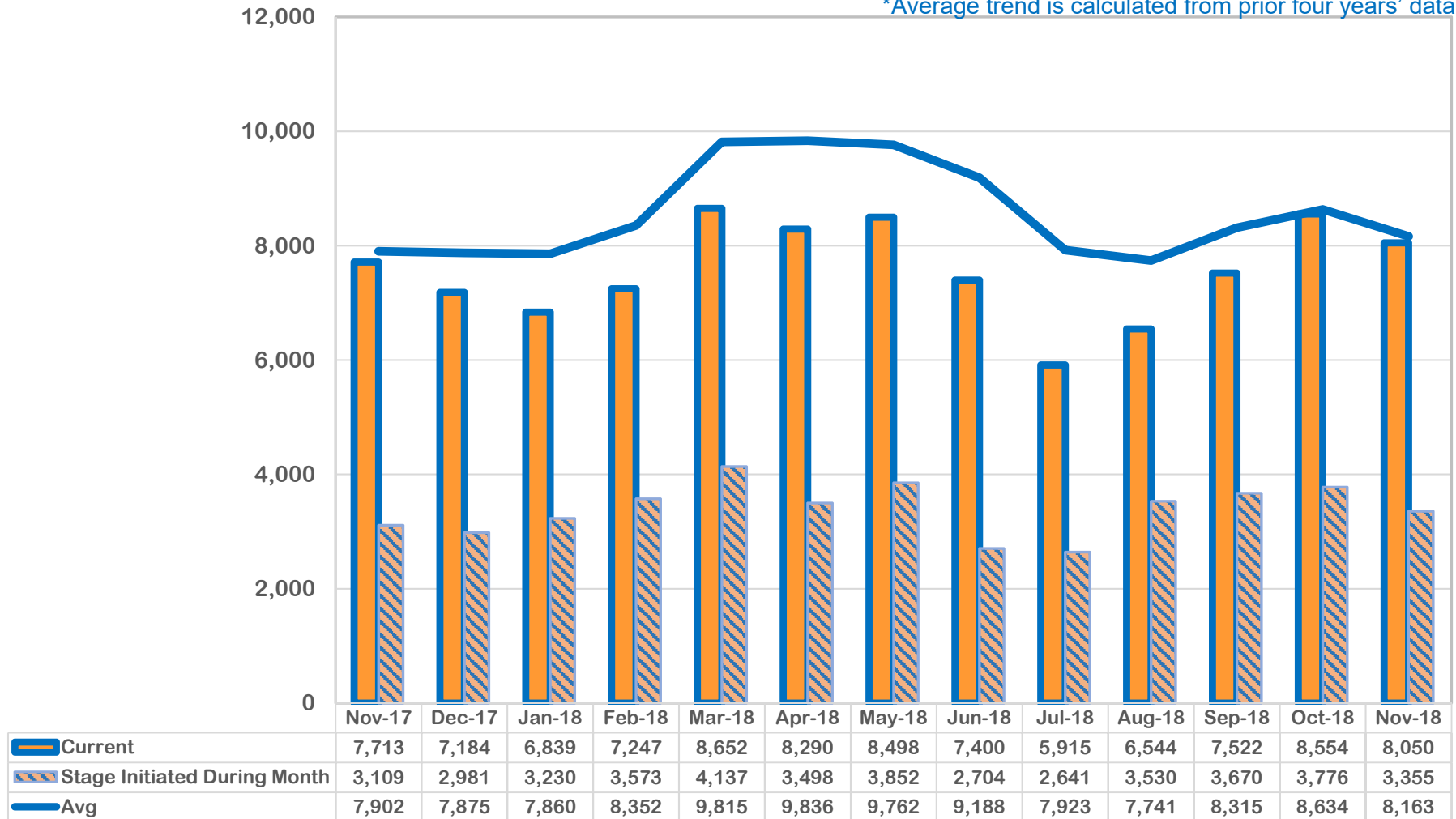
Although the last 13 months has seen an increase in investigations of over 20% since the prior 13 months (not pictured), the current year's total investigations reveals an improvement in investigations when compared to each monthly averages of the average trend.

Outcome IC: Child Protective Services Cases Investigation Cases Only (November 2017 – November 2018)

DIVISION OF FAMILY & CHILDREN SERVICES

How many Investigation Cases were open at any time during the month Vs Investigation Cases that were initiated during the month for the past 13 months?

*Average trend is calculated from prior four years' data.

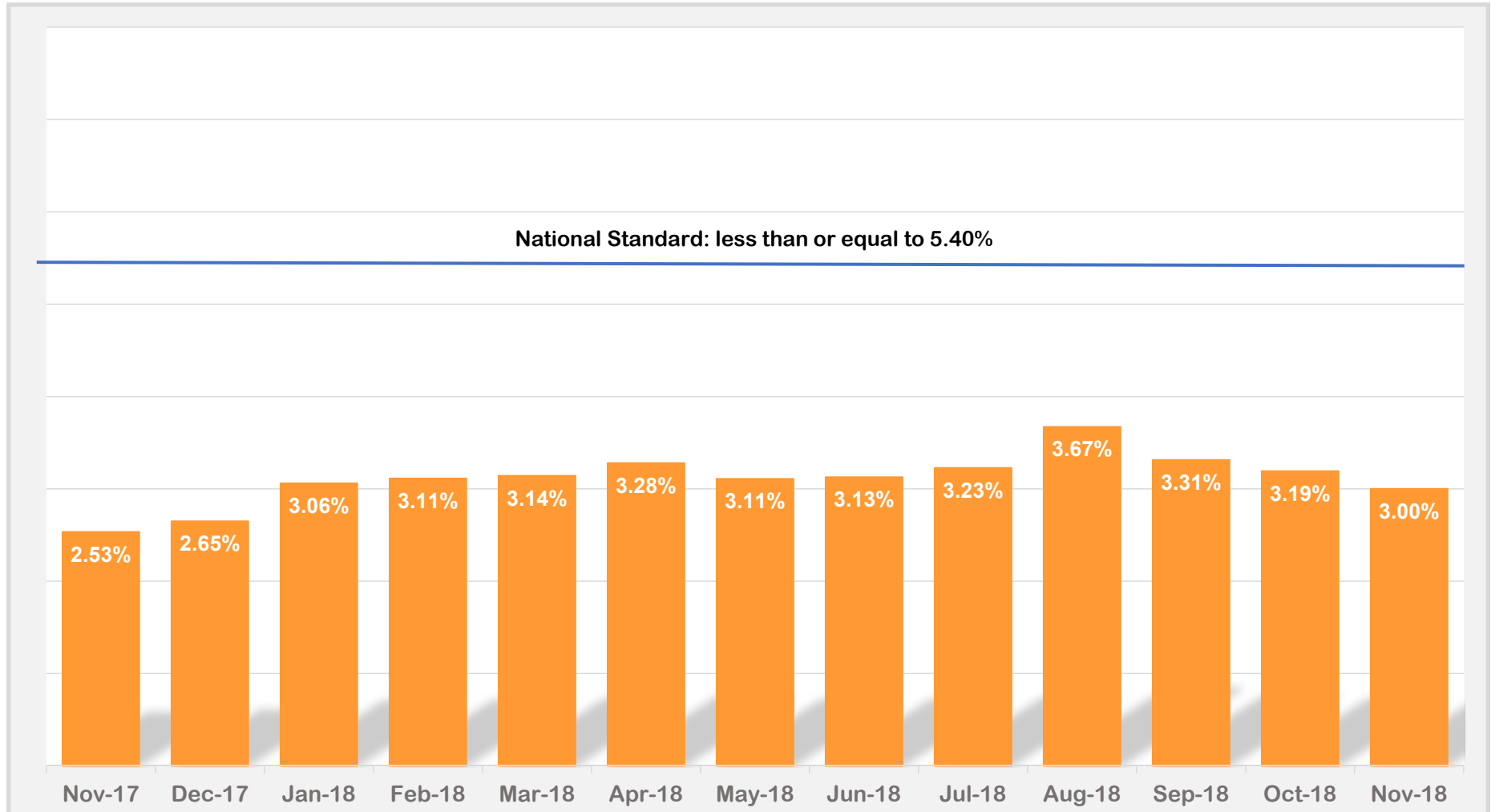


This chart indicates that during each month, the cases that are opened during the month are less than half of the overall open cases during the month. Additionally, the increases and decreases in those opened during the month resemble the trend in the current cases open during the month..

Outcome IC_1: Child Protective Services Cases Investigation Cases Only (November 2017 – November 2018)

DIVISION OF FAMILY & CHILDREN SERVICES

What percentage of children had a subsequent substantiated incident of maltreatment within 6 months?



The trend reveals that Georgia has consistently maintained a low recurrence rate below the national standard of 5.4%. However, increases can be seen from November 2017 – April 2018 with the higher rate occurring in August 2018. Georgia has a higher percentage of maltreatment in November 2018 as compared to November 2017.

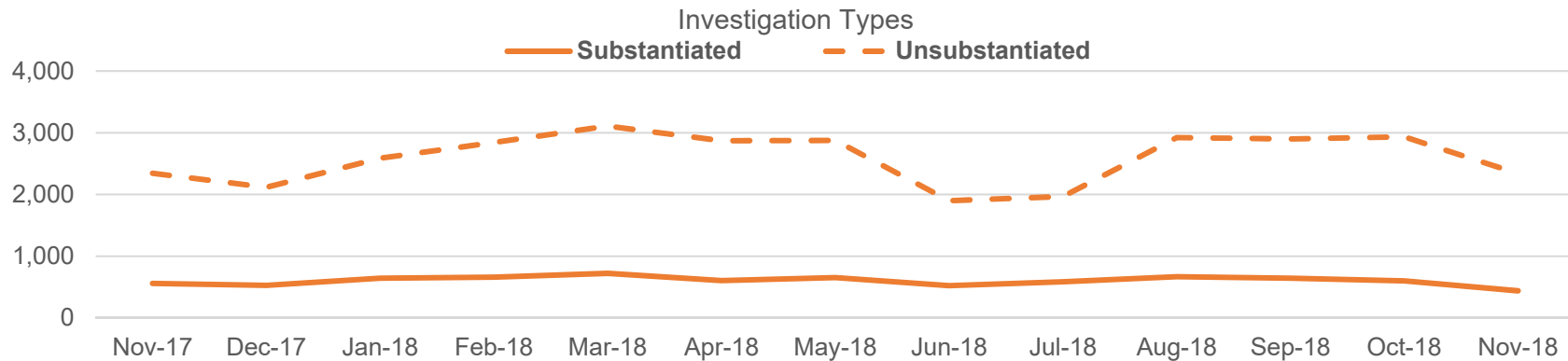
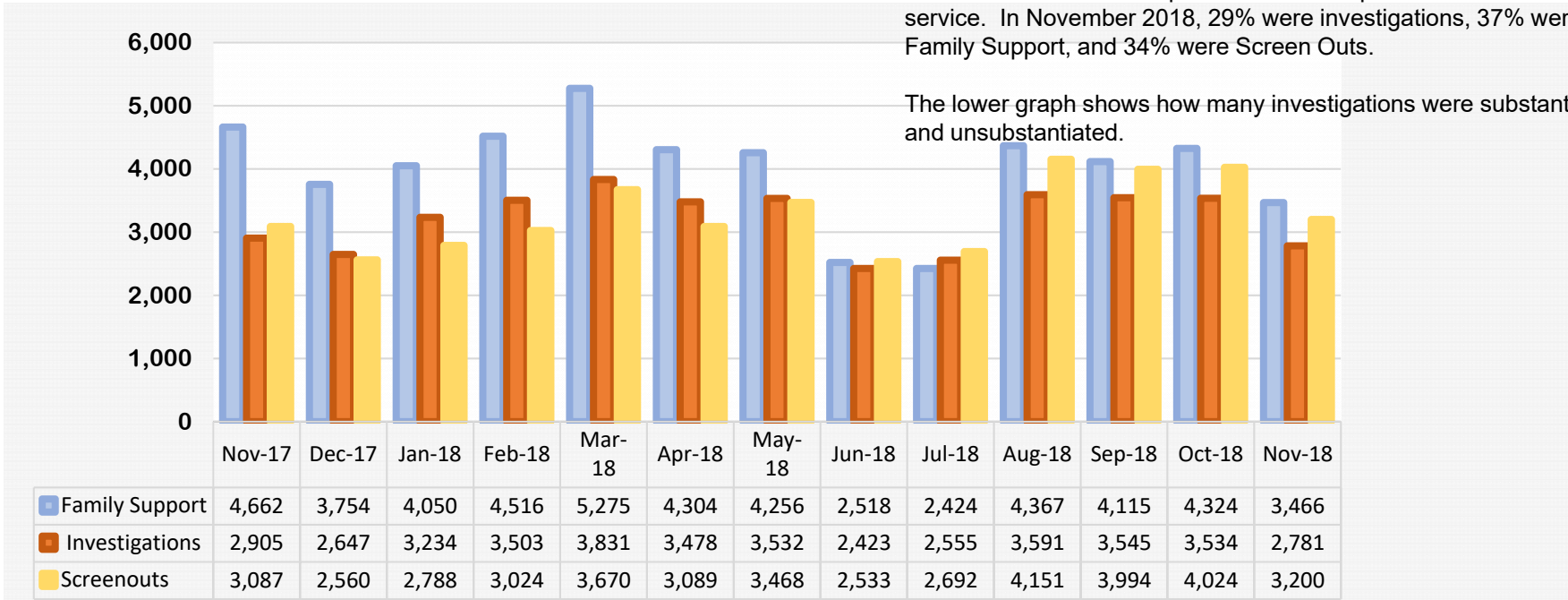
Outcome II: Recurrence of Substantiated Child Maltreatment (November 2017 – November 2018)

DIVISION OF FAMILY & CHILDREN SERVICES

What was the disposition of all CPS reports received during the month ?

This chart reveals the disposition of CPS reports that were received for service. In November 2018, 29% were investigations, 37% were Family Support, and 34% were Screen Outs.

The lower graph shows how many investigations were substantiated and unsubstantiated.

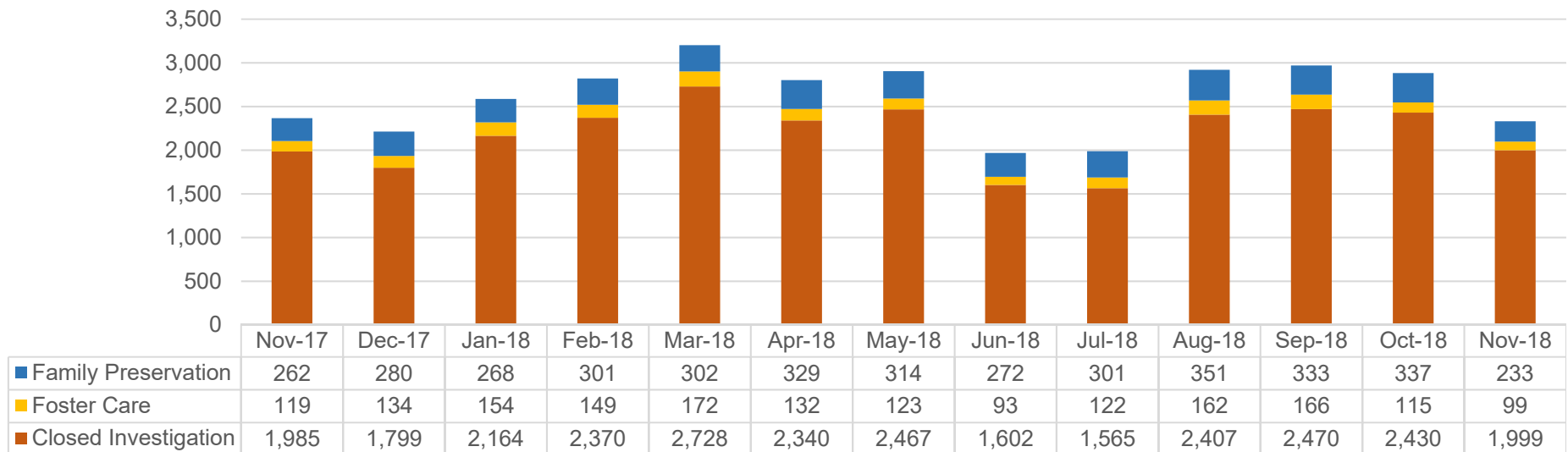
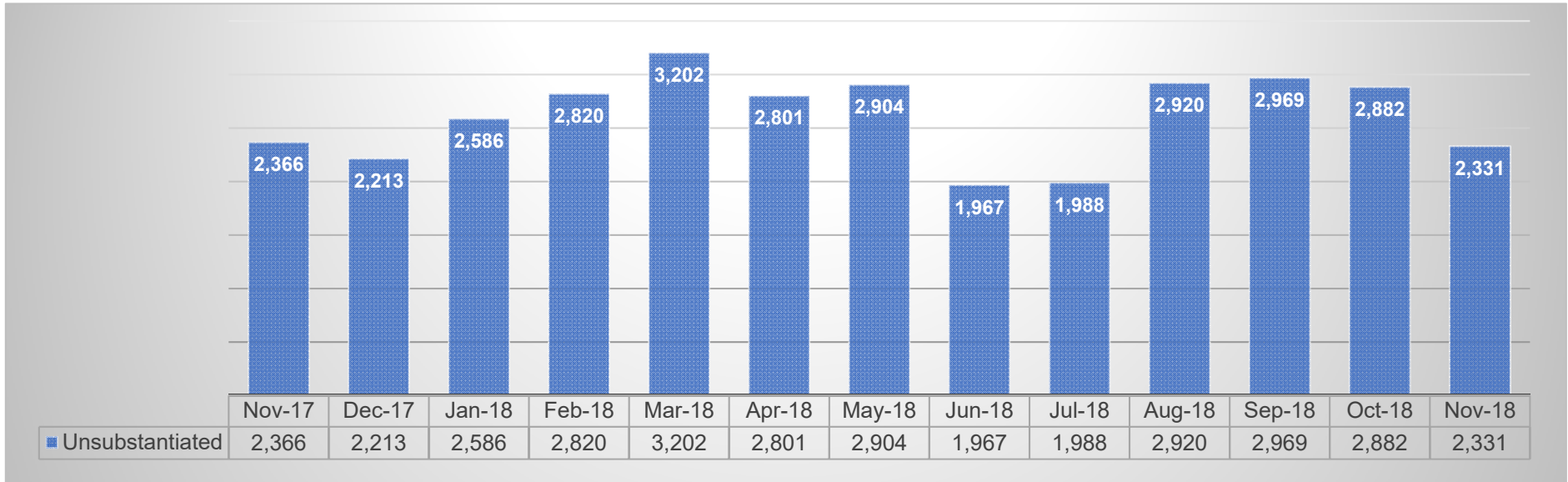


Outcome III: Disposition of Child Abuse and Neglect Reports (November 2017 – November 2018)

What was the final disposition of closed investigations during the month?

DIVISION OF FAMILY & CHILDREN SERVICES

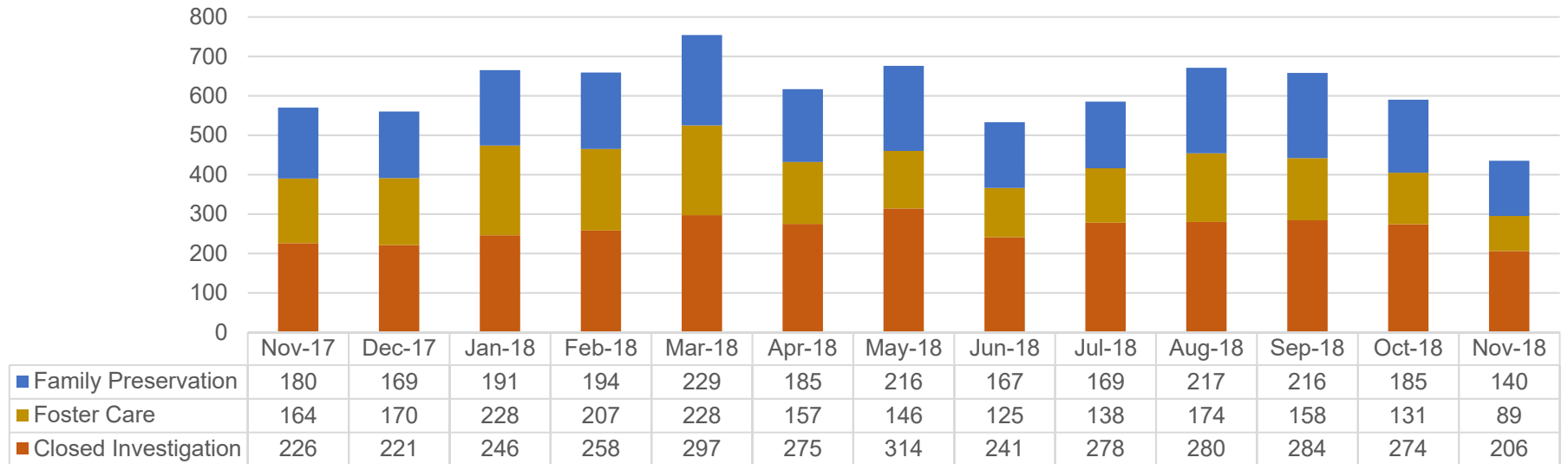
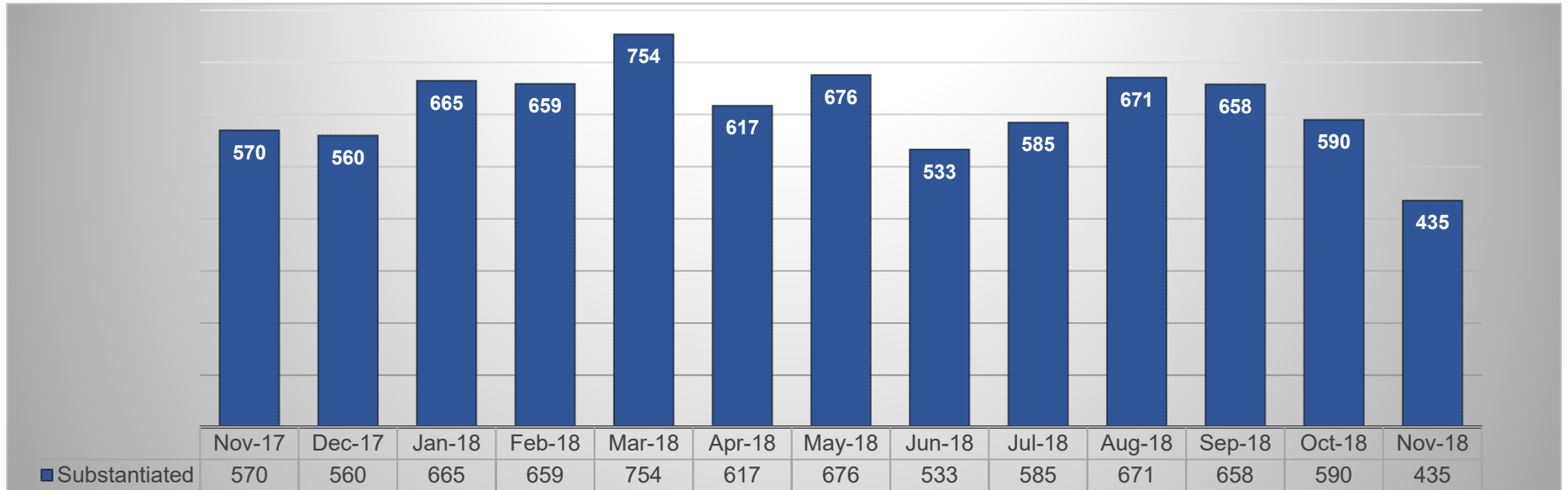
Unsubstantiated



Outcome IV: Subsequent Case-Types of Investigations (November 2017 – November 2018)

DIVISION OF FAMILY & CHILDREN SERVICES

Substantiated:

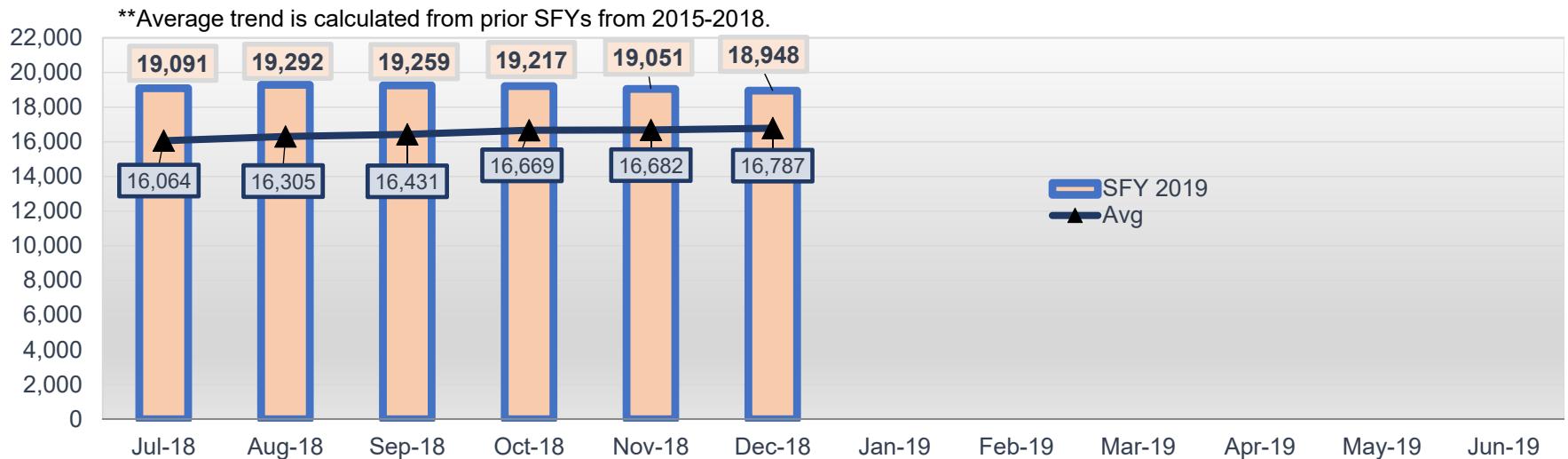
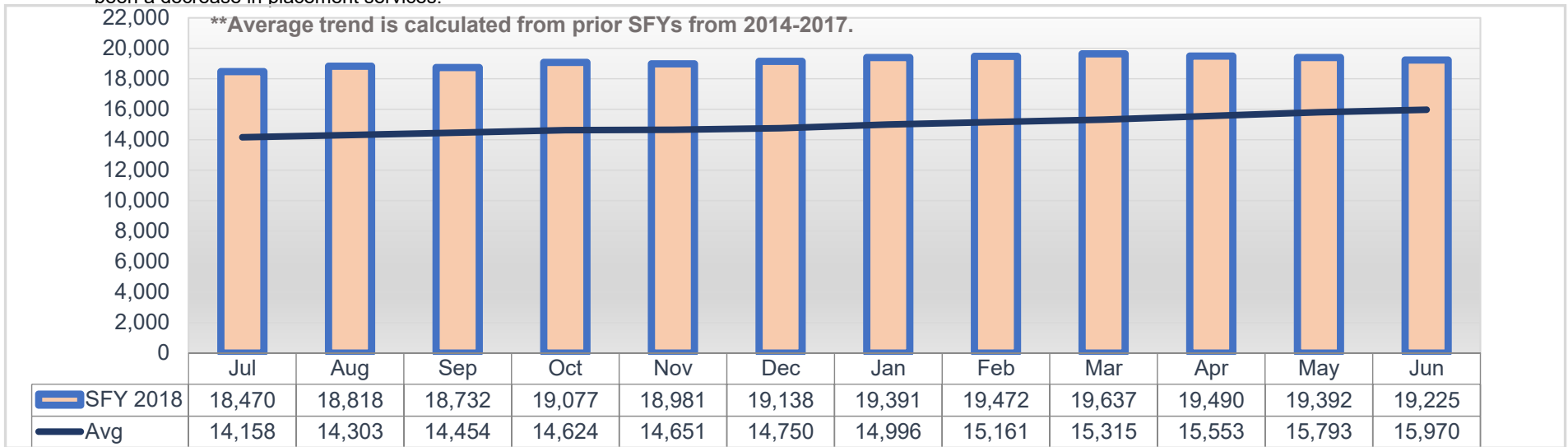


Outcome IV: Subsequent Case-Types of Investigations (November 2017 – November 2018)

DIVISION OF FAMILY & CHILDREN SERVICES

How many children were involved placement services for each month during the State Fiscal Year?

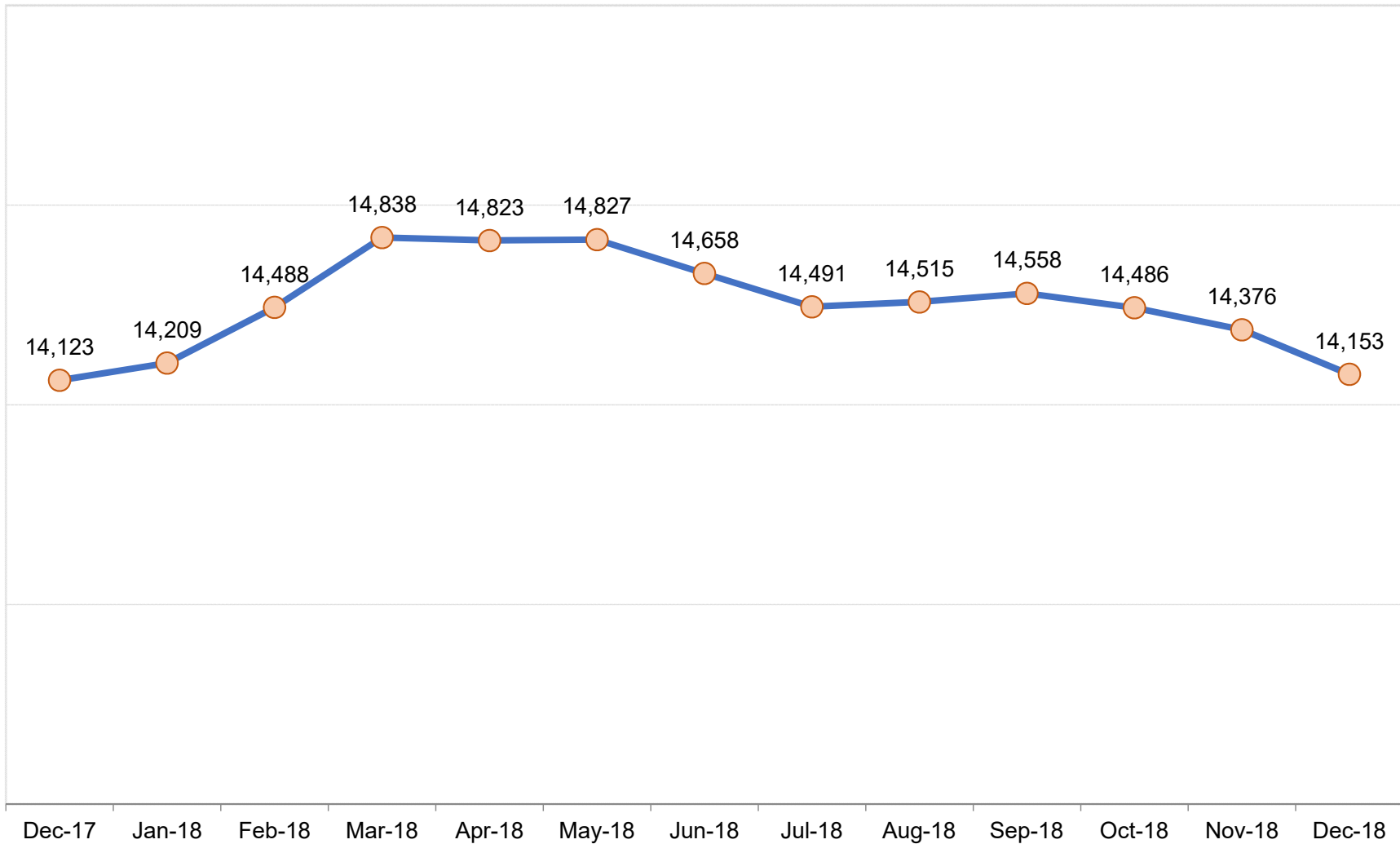
The average trend for the past four years shows a gradual increase (low slope) in cases. The placement services include continued collaboration with families after out of home care may have ended as well as those who are in out of home care with DFCS Age 0 - 21. For the last 4 months of the SFY 2019, there has been a decrease in placement services.



Outcome V: Number of Children in Placement Services (State Fiscal Year 2019 To Date)

DIVISION OF FAMILY & CHILDREN SERVICES

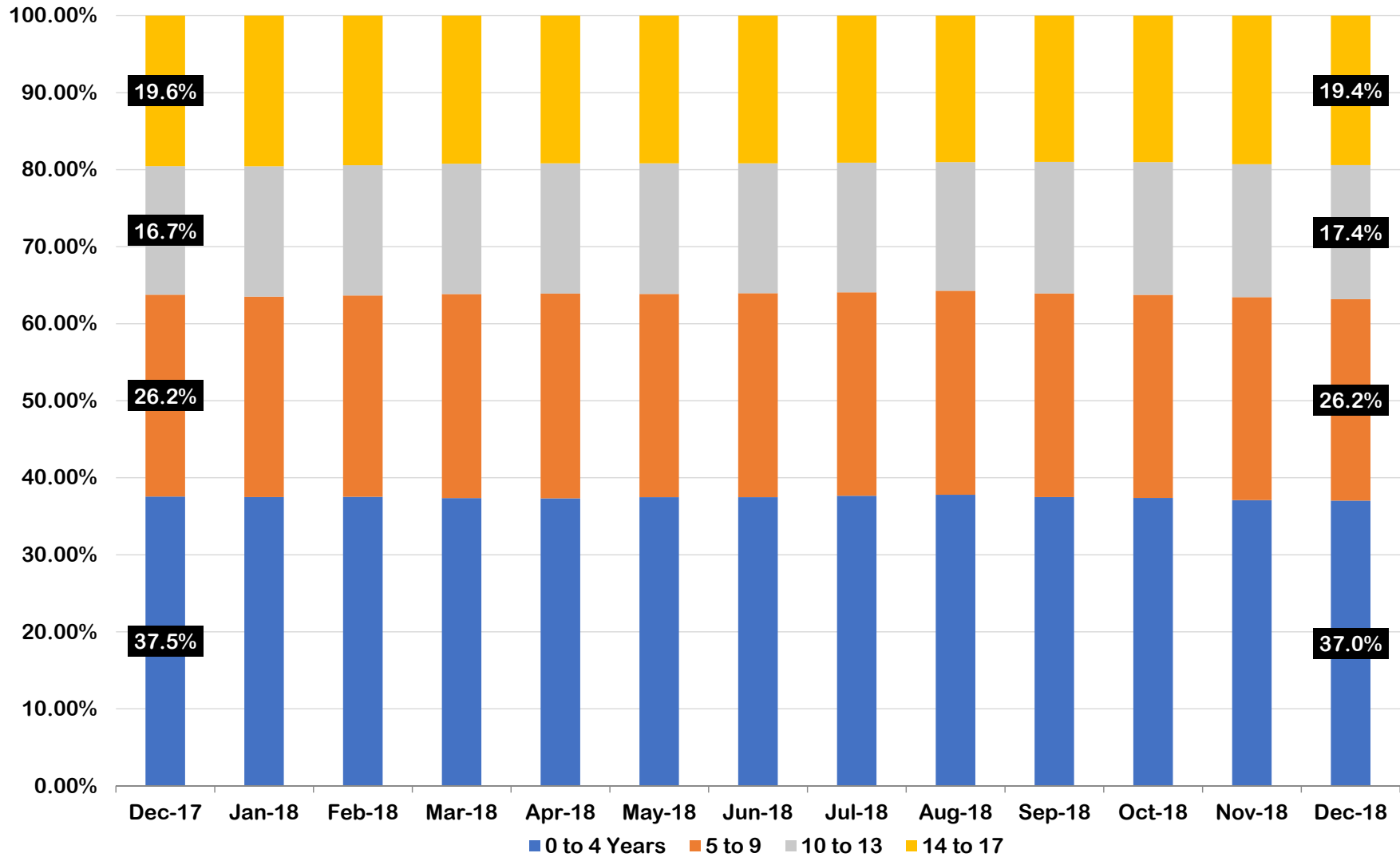
How many children were in Foster Care under the age of 18?



Outcome VI: Children in DFCS Custody Under the Age of 18 (December 2017 – December 2018)

DIVISION OF FAMILY & CHILDREN SERVICES

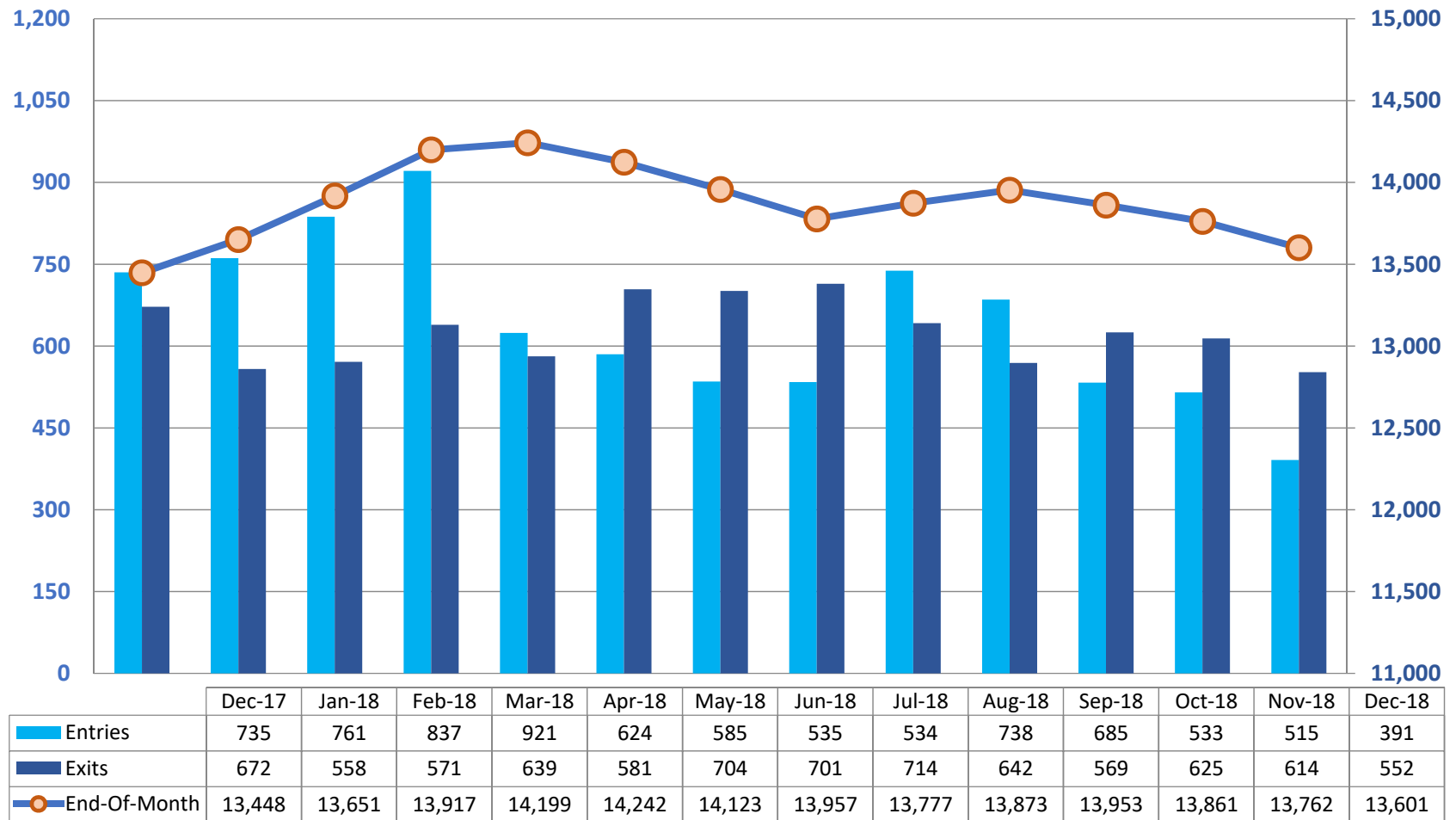
Has the age distribution of the foster population changed much over the last year?



Outcome VI-A: Children in DFCS Custody Under the Age of 18 by Age Group, (December 2017 – December 2018)

DIVISION OF FAMILY & CHILDREN SERVICES

How many children are moving in and out of Foster Care? How many remain in care on the last day?

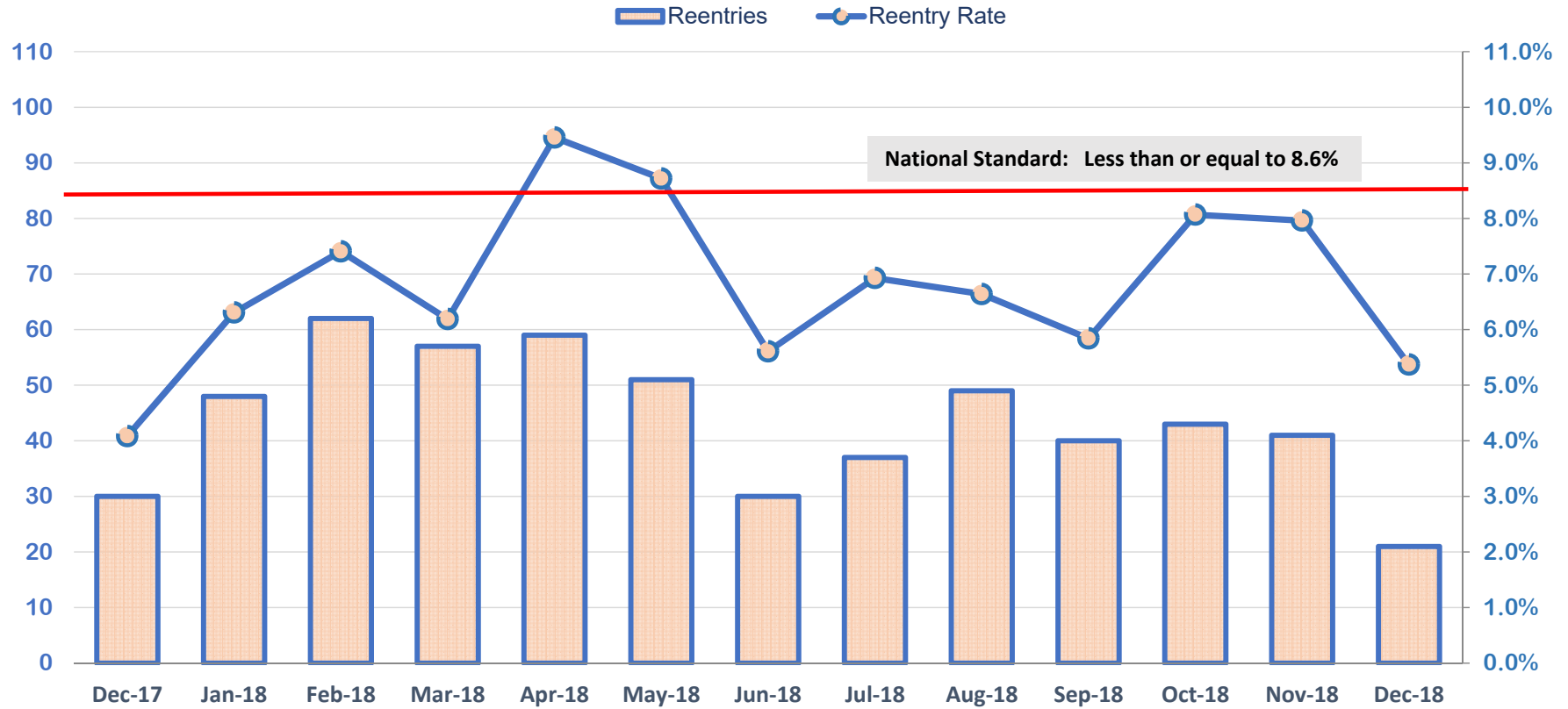


Outcome VII: Comparison of Foster Care Entries and Exits (December 2017 – December 2018)

**Reentries that occur within the same month are not double counted in the entries and exits on this chart. This chart represents unique population and movement into custody during the month.

DIVISION OF FAMILY & CHILDREN SERVICES

How many children were in a prior episode within twelve months of the current episode?

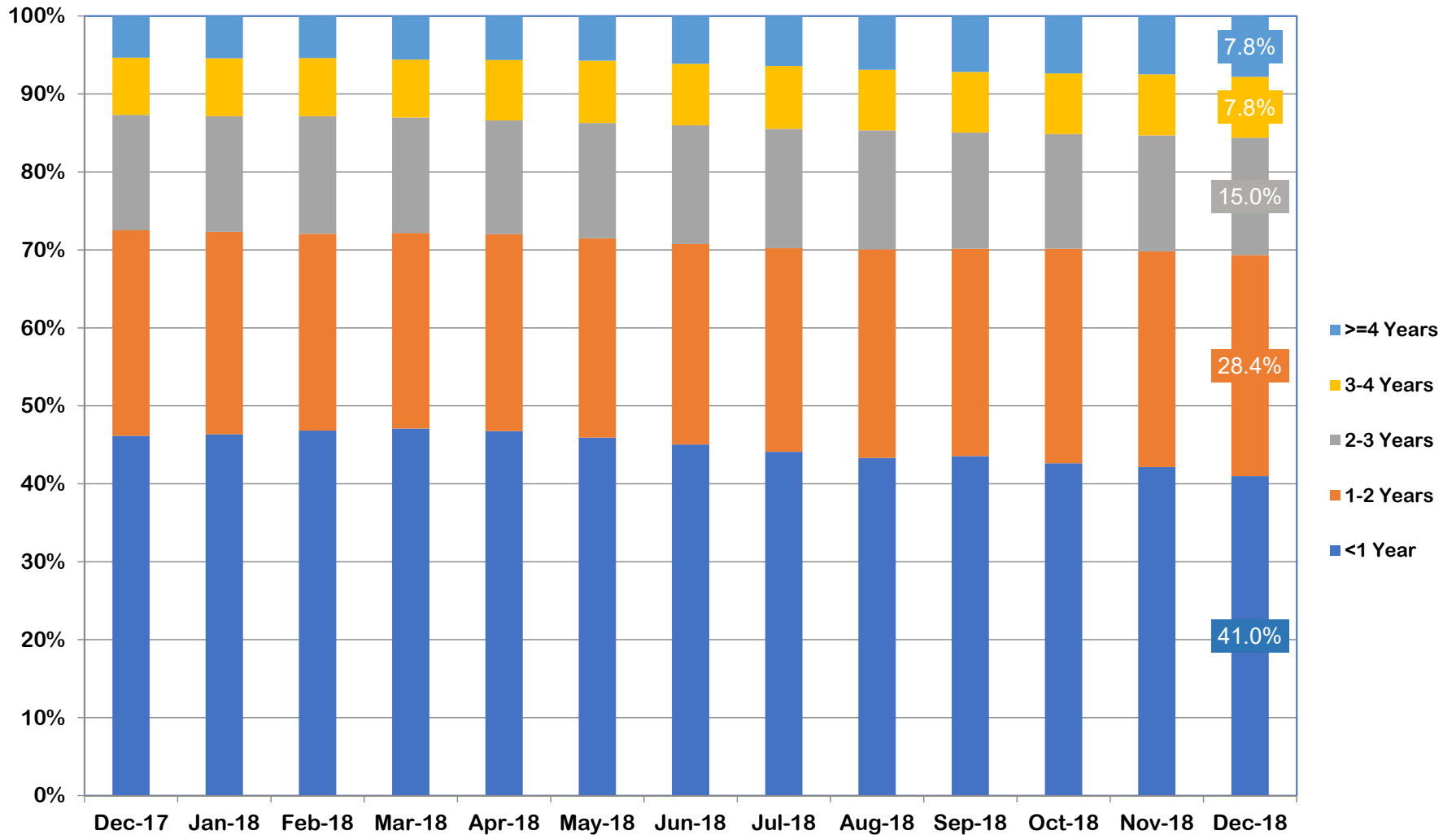


Dec-17	Jan-18	Feb-18	Mar-18	Apr-18	May-18	Jun-18	Jul-18	Aug-18	Sep-18	Oct-18	Nov-18	Dec-18
30	48	62	57	59	51	30	37	49	40	43	41	21
4.1%	6.3%	7.4%	6.2%	9.5%	8.7%	5.6%	6.9%	6.6%	5.8%	8.1%	8.0%	5.4%

Outcome VIII: Foster Care Re-Entries (December 2017 – December 2018)

DIVISION OF FAMILY & CHILDREN SERVICES

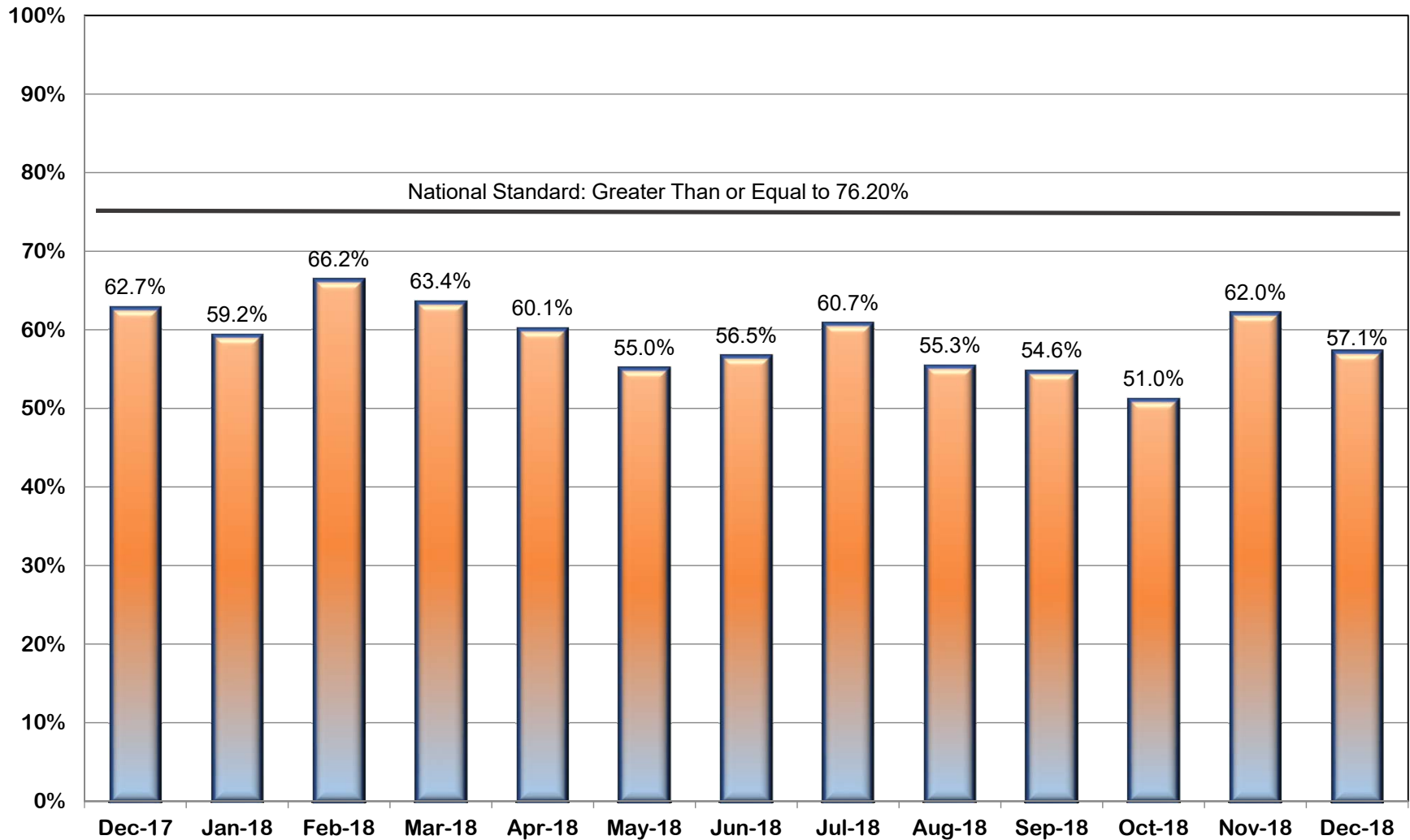
What percentage of foster children have been in care for less than a year, less than 2 years . . . each month?



Outcome IX: Foster Care Length of Stay (December 2017 – December 2018)

DIVISION OF FAMILY & CHILDREN SERVICES

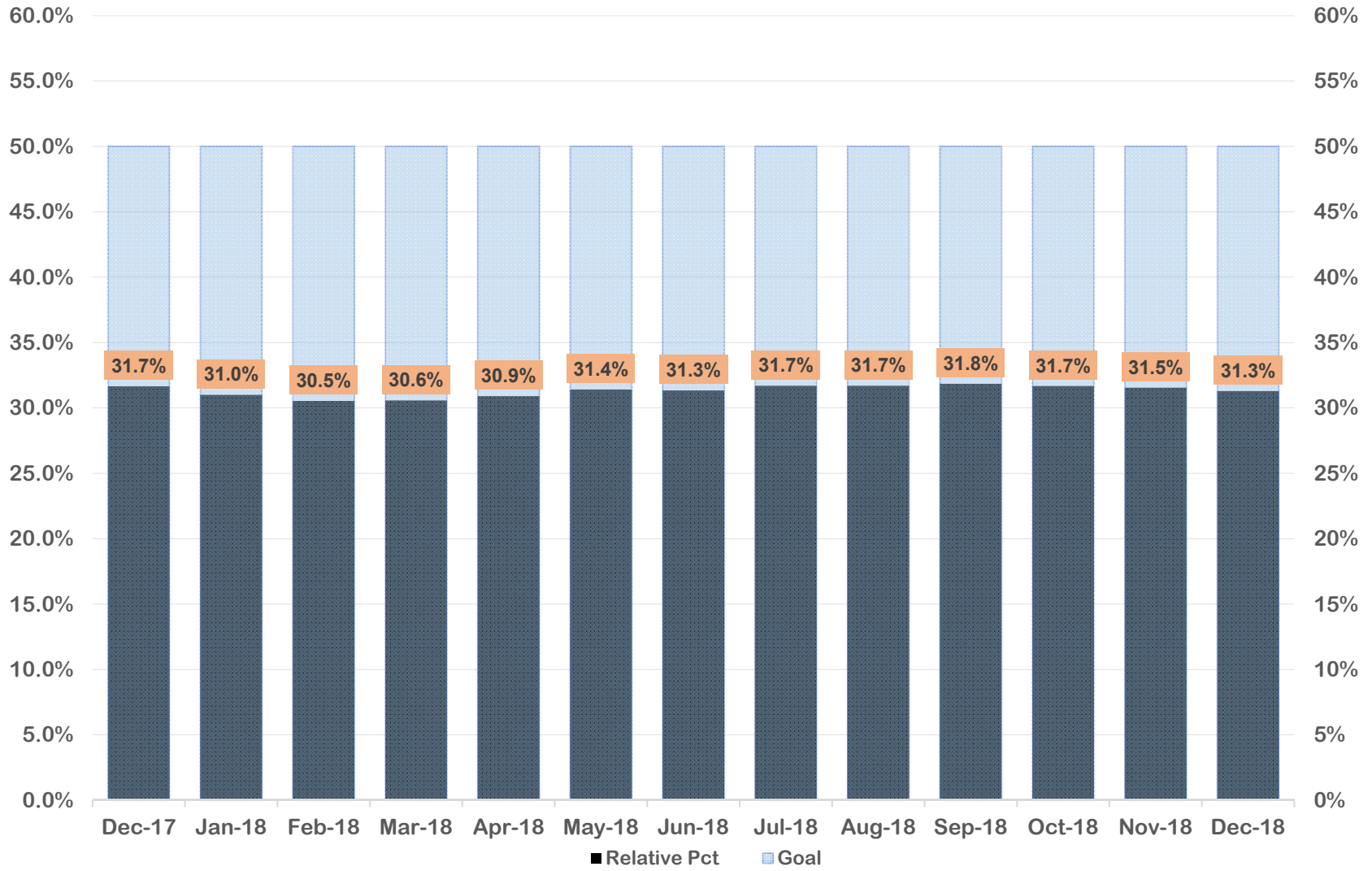
What percentage of reunifications occurred within twelve (12) months of the child entering foster care?



Outcome X: Length of Time to Reunification (December 2017 – December 2018)

DIVISION OF FAMILY & CHILDREN SERVICES

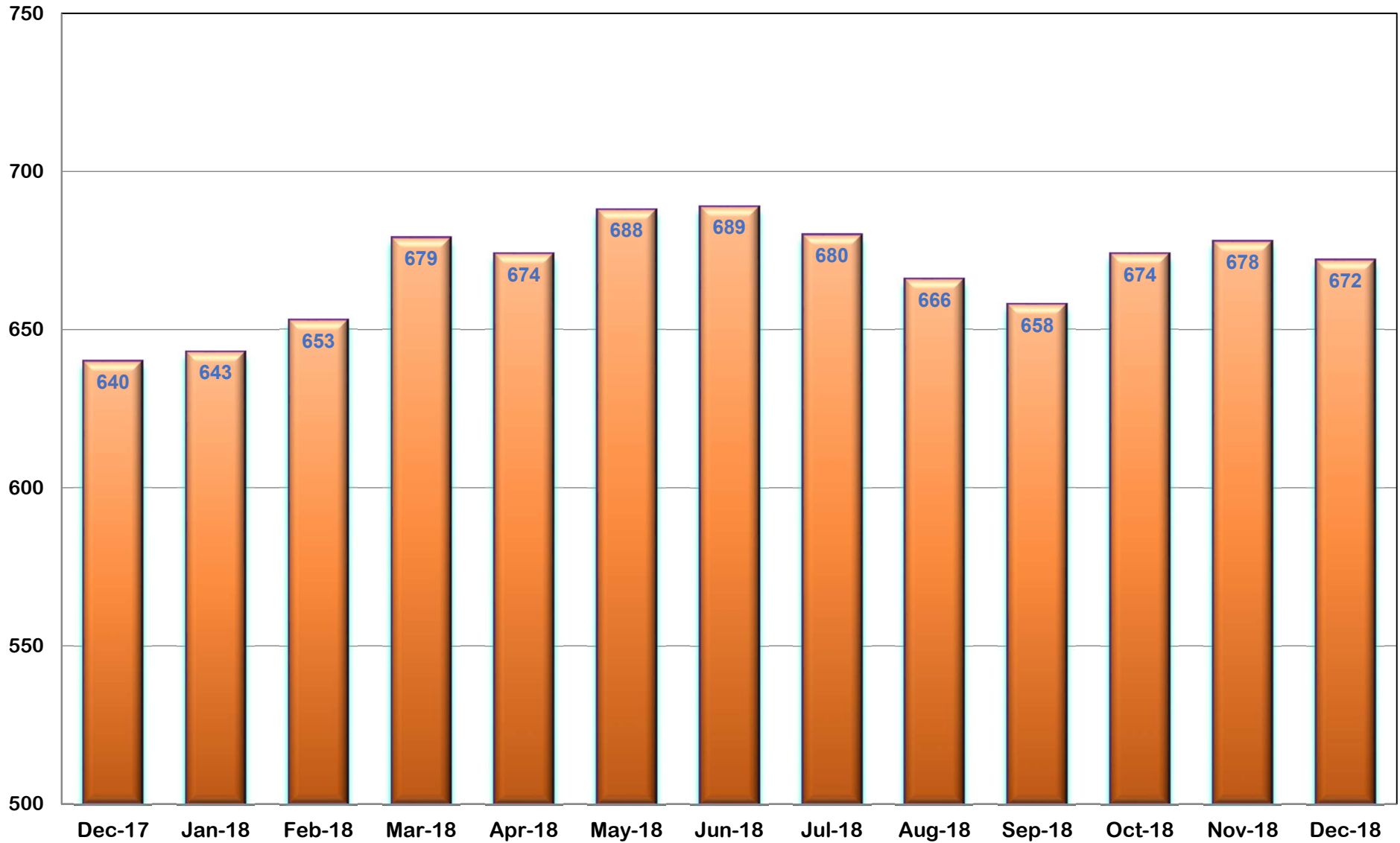
What percentage of children in Foster Care were placed with a relative during the month?



Outcome XI: Percent of Children Placed with Relatives (December 2017 – December 2018)

DIVISION OF FAMILY & CHILDREN SERVICES

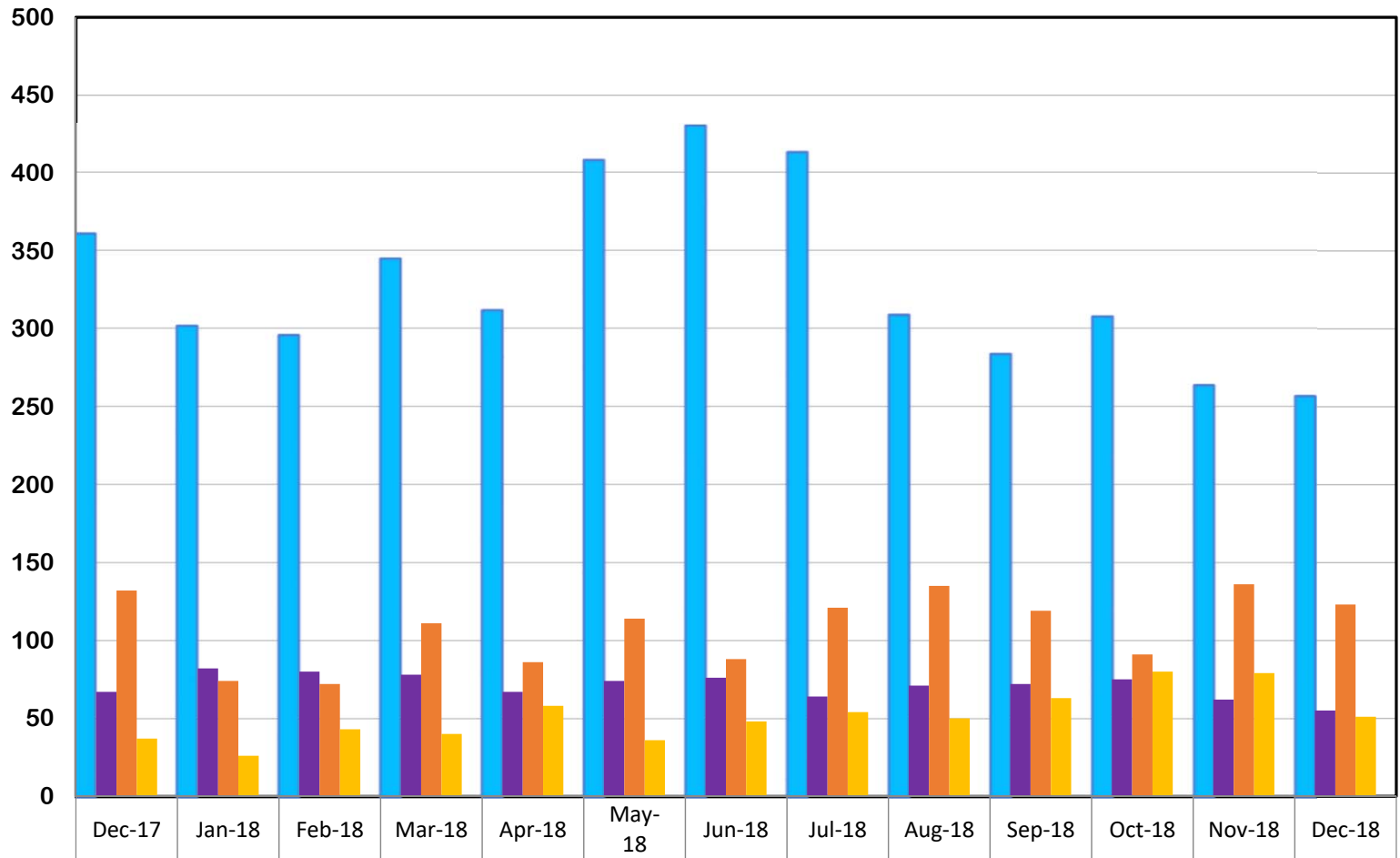
How many children remained in Foster Care after the age of 18?



Outcome XII: Extended Youth Services (December 2017 – December 2018)

DIVISION OF FAMILY & CHILDREN SERVICES

How many children in Foster Care were discharged to a positive permanency during the month?

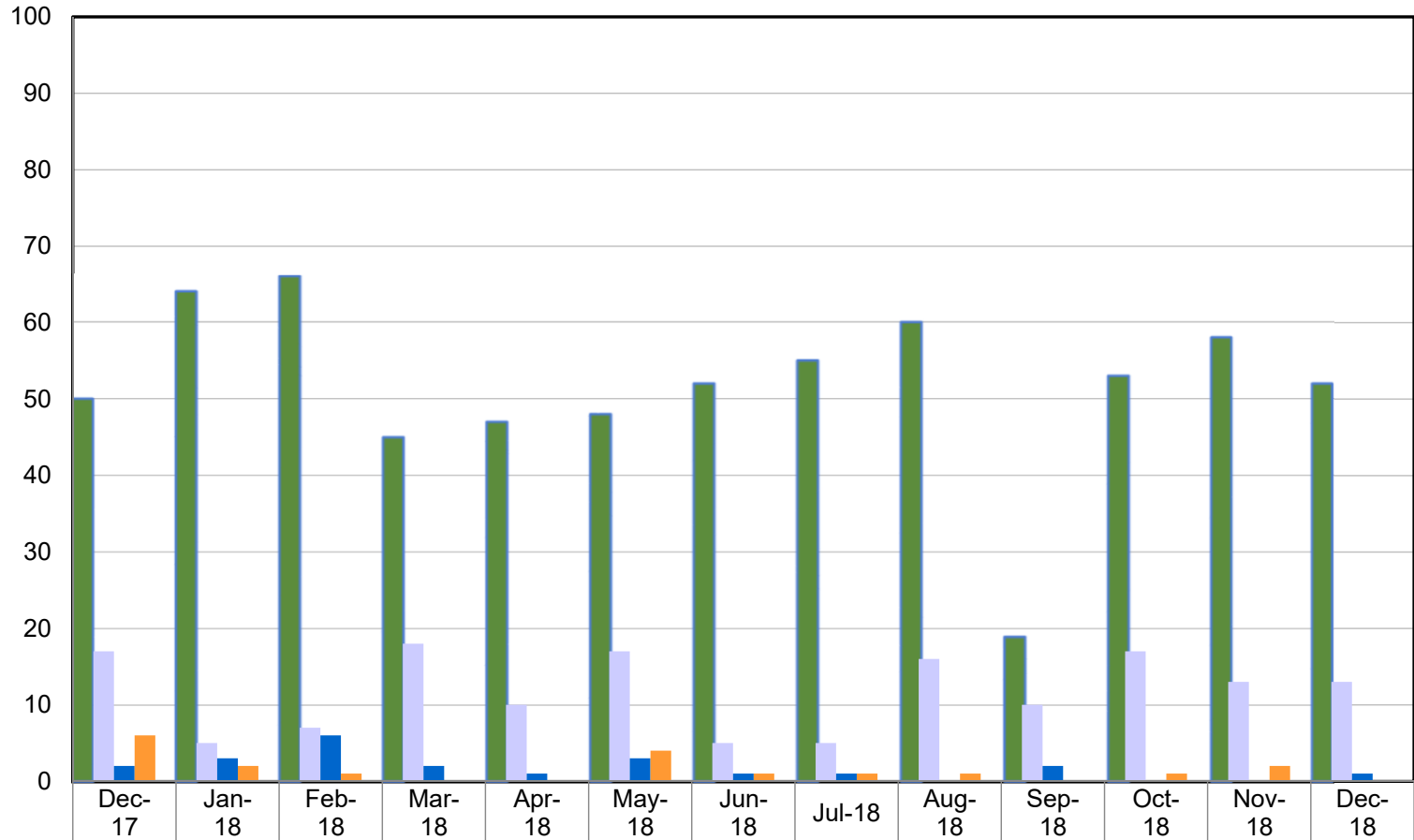


	Dec-17	Jan-18	Feb-18	Mar-18	Apr-18	May-18	Jun-18	Jul-18	Aug-18	Sep-18	Oct-18	Nov-18	Dec-18
Reunification	361	302	296	345	312	408	430	413	309	284	308	264	257
Living With Other Relative(s)	67	82	80	78	67	74	76	64	71	72	75	62	55
Finalized Adoption	132	74	72	111	86	114	88	121	135	119	91	136	123
Guardianship	37	26	43	40	58	36	48	54	50	63	80	79	51
Positive Permanency	597	484	491	574	523	632	642	652	565	538	554	541	486

Outcome XIII: Number of Discharges (December 2017 – December 2018)

DIVISION OF FAMILY & CHILDREN SERVICES

How many children in Foster Care were discharged to another permanency during the month?

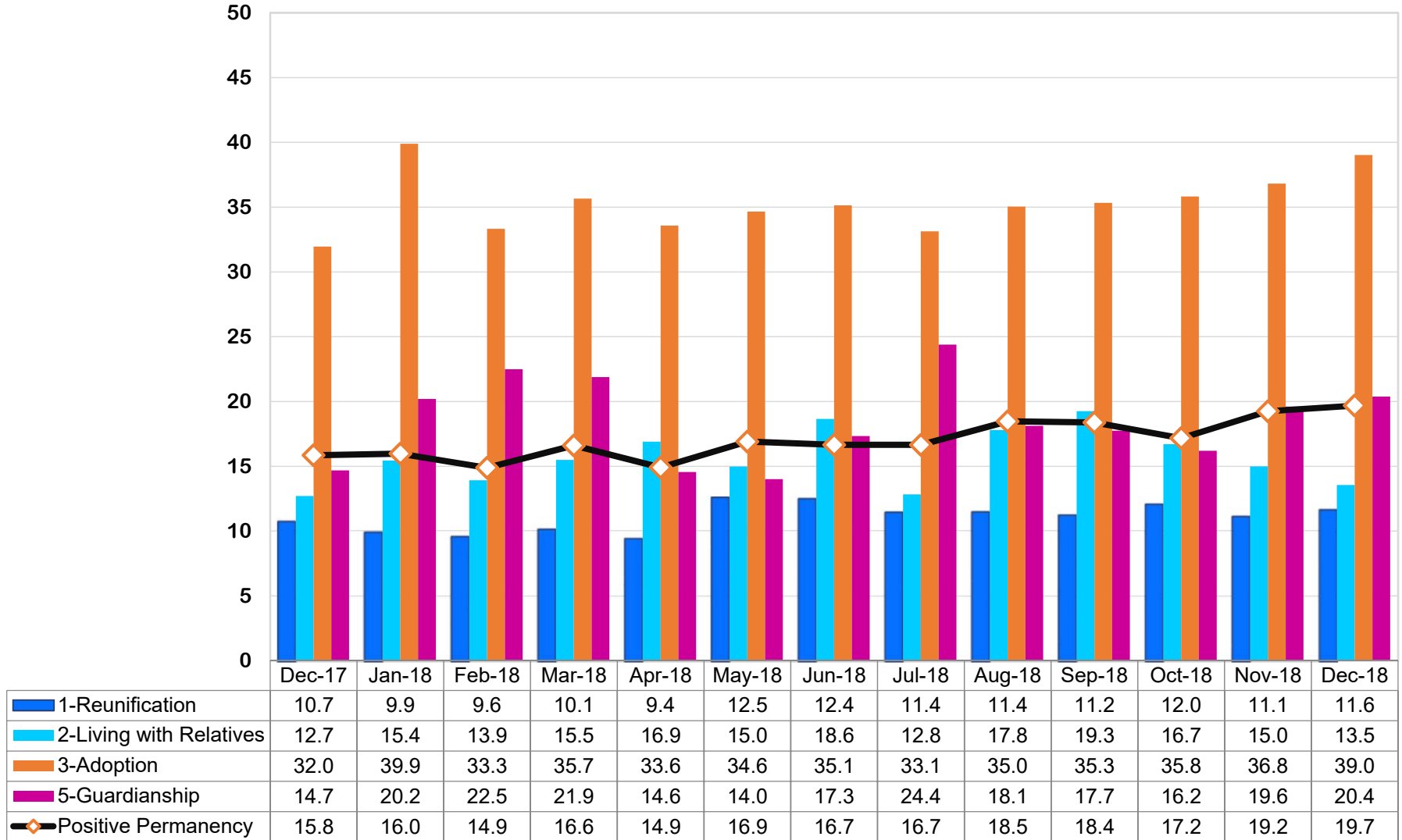


	Dec-17	Jan-18	Feb-18	Mar-18	Apr-18	May-18	Jun-18	Jul-18	Aug-18	Sep-18	Oct-18	Nov-18	Dec-18
Emancipation	50	64	66	45	47	48	52	55	60	19	53	58	52
Transfer to Another Agency	17	5	7	18	10	17	5	5	16	10	17	13	13
Runaway	2	3	6	2	1	3	1	1	0	2	0	0	1
Death of Child	6	2	1	0	0	4	1	1	1	0	1	2	0
Other Permanency	75	74	80	65	58	72	59	62	77	31	71	73	66

Outcome XIII: Number of Discharges (December 2017 – December 2018)

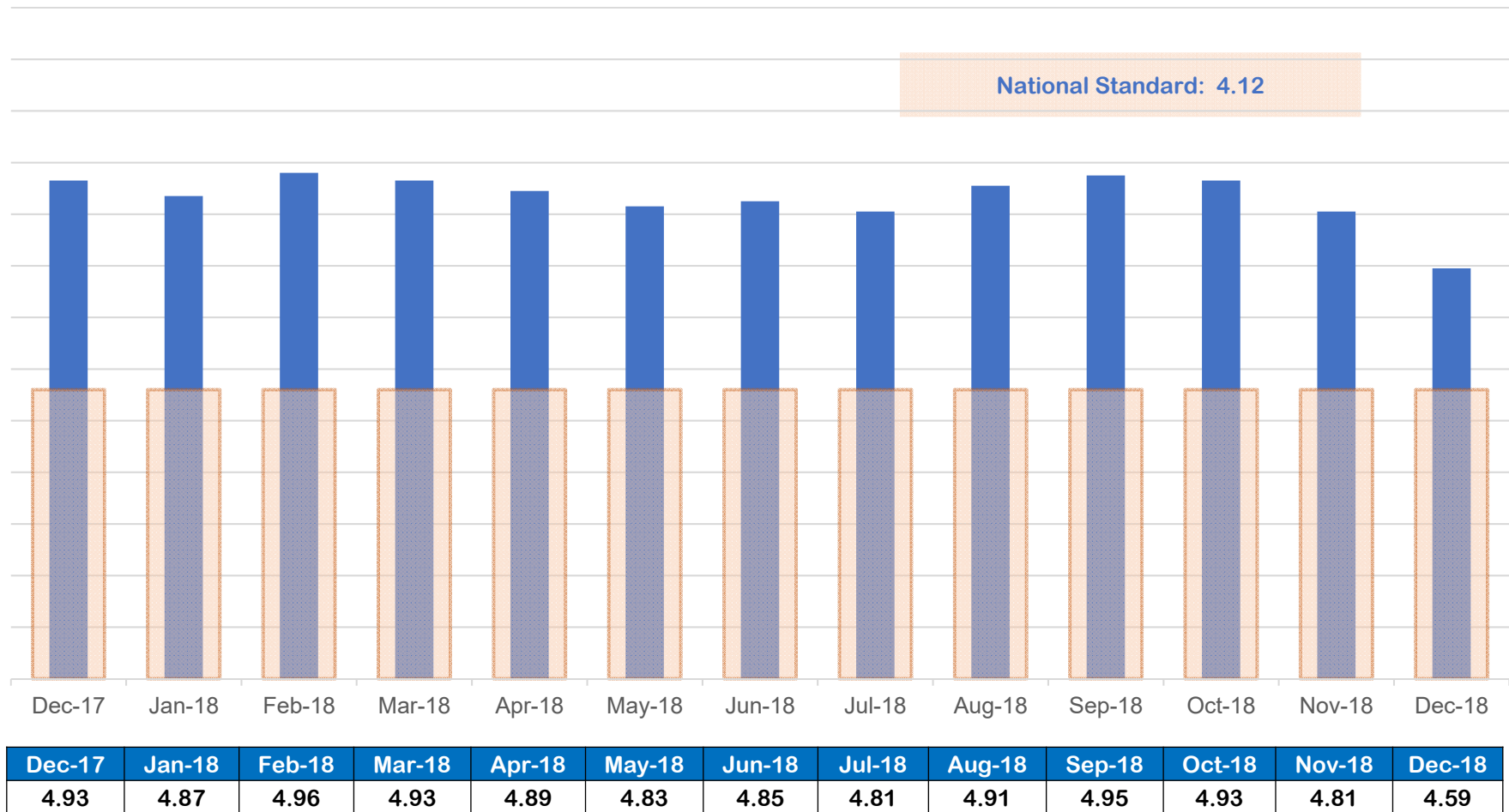
DIVISION OF FAMILY & CHILDREN SERVICES

What is the average time in months for a foster child to reach positive permanency?



DIVISION OF FAMILY & CHILDREN SERVICES

How is the state of Georgia performing on the federal measure of Placement Stability?



Outcome XIV: Placement Stability Performance Measure (December 2017 – December 2018)

Appendices

APPENDIX A

Regional Chart of Outcome VI

**Children in DFCS Custody Under the Age of 18
(December 2017 – December 2018)**

DIVISION OF FAMILY & CHILDREN SERVICES

Outcome VI: Children in DFCS Custody Under the Age of 18 (By Region) (December 2017 – December 2018)

Region	Dec-17	Jan-18	Feb-18	Mar-18	Apr-18	May-18	Jun-18	Jul-18	Aug-18	Sep-18	Oct-18	Nov-18	Dec-18
1	1,421	1,438	1,461	1,518	1,528	1,498	1,473	1,428	1,452	1,488	1,485	1,501	1,458
2	878	879	922	975	979	990	983	1,009	1,000	1,001	987	980	980
3	996	975	986	985	973	958	964	957	964	988	1,006	1,019	1,037
4	1,144	1,123	1,123	1,142	1,140	1,162	1,163	1,132	1,119	1,102	1,104	1,089	1,051
5	1,163	1,157	1,191	1,209	1,225	1,226	1,201	1,184	1,193	1,203	1,199	1,159	1,147
6	762	761	773	776	770	766	743	732	731	718	708	690	686
7	581	611	653	697	717	714	721	733	758	770	756	739	728
8	714	723	741	744	745	749	749	760	767	763	762	741	736
9	577	579	588	591	589	589	576	573	567	562	544	534	501
10	785	791	778	772	776	760	757	751	755	771	775	784	788
11	1,194	1,193	1,219	1,265	1,261	1,261	1,251	1,257	1,250	1,246	1,237	1,237	1,210
12	927	958	976	1,005	999	1,013	1,004	984	983	980	983	960	946
13	1,400	1,408	1,428	1,483	1,449	1,462	1,402	1,373	1,357	1,342	1,336	1,333	1,313
14	1,581	1,613	1,649	1,676	1,672	1,679	1,671	1,618	1,619	1,624	1,604	1,610	1,572
Statewide	14,123	14,209	14,488	14,838	14,823	14,827	14,658	14,491	14,515	14,558	14,486	14,376	14,153

APPENDIX B

Regional Chart of Outcome XIV

**Placement Stability Performance Coefficient
(December 2017 – December 2018)**

National Standard = 4.12
Desired Goal to Meet the PIP = 6.01

DIVISION OF FAMILY & CHILDREN SERVICES

Outcome VI: Placement Stability for Children in DFCS Custody Under the Age of 18 (By Region) (December 2017 – December 2018)

Region	Dec-17	Jan-18	Feb-18	Mar-18	Apr-18	May-18	Jun-18	Jul-18	Aug-18	Sep-18	Oct-18	Nov-18	Dec-18
1	5.79	5.68	5.84	5.68	5.70	5.58	5.50	5.37	5.41	5.71	5.60	5.31	4.93
2	5.24	5.40	5.62	5.79	5.74	5.59	5.55	5.42	5.49	5.26	5.20	5.02	4.86
3	4.63	4.75	4.88	4.88	5.04	5.05	4.86	5.11	4.99	4.83	4.83	4.51	4.09
4	4.60	4.30	4.36	4.41	3.89	3.77	3.62	3.60	3.58	3.50	3.55	3.71	3.58
5	5.50	5.36	5.23	5.28	5.26	5.49	5.54	5.50	5.47	5.47	5.57	5.44	5.34
6	3.82	3.94	3.92	4.01	4.08	3.78	4.02	4.08	4.31	4.60	4.38	4.53	4.29
7	3.22	2.95	3.10	3.02	3.13	3.19	3.21	3.26	3.39	3.47	3.28	3.40	3.10
8	3.34	3.11	2.99	2.94	2.74	2.99	3.15	3.10	3.75	3.94	3.83	3.56	3.66
9	3.43	3.53	3.82	3.60	3.48	3.08	3.49	3.90	3.99	3.83	3.94	3.69	3.53
10	4.06	3.94	4.09	3.79	3.43	3.31	2.98	3.00	2.84	2.76	2.87	3.00	3.08
11	3.77	3.64	3.90	4.23	4.30	4.23	4.28	4.22	4.22	4.26	4.11	4.01	3.72
12	5.01	5.17	5.22	5.10	4.76	4.65	4.70	4.71	4.69	5.08	5.24	4.93	4.73
13	6.70	6.64	6.71	6.44	6.47	6.45	6.49	6.34	6.73	6.69	6.76	7.06	6.54
14	5.81	5.82	5.84	5.96	6.26	6.29	6.39	6.20	6.49	6.46	6.39	6.04	6.00
Statewide	4.93	4.87	4.96	4.93	4.89	4.83	4.85	4.81	4.91	4.95	4.93	4.81	4.59