

Monthly Measures and Results for July 2018*

*(Reflects Safety Outcomes as of May 31, 2018 And
Permanency Outcomes as of June 30, 2018)
With Appendices

This report is produced by the Data Unit. For questions or comments, you may contact one of the following:
Samantha Adams, Director (Samantha.Adams@dhs.ga.gov)
John Roach, Unit Manager (John.Roach@dhs.ga.gov)
Vickie Fluellen, Operations Analyst 3 (Vickie.Fluellen@dhs.ga.gov)

- Part I: Definitions And Data Sources contained in Report**
- Part II: Safety Outcomes**
- Part III: Permanency/Well-being Outcomes**
- Part IV: Appendices**
 - A. Regional Charts of Outcome V (Trend of Unique Children in the Legal Custody of DFCS Under the Age of 18)**
 - B. Regional Charts of Outcome XIV: Stability Performance Coefficient (Number of Moves/Number of Days in Custody * 1000)**

***There are no revisions to this document to date.

SAFETY: Children are first and foremost, protected from abuse and neglect.

Outcome I: Child Protective Services Cases

Count of unique CPS Investigations and Family Preservation (Ongoing) stages open at any point during the month vs. Average count of unique CPS Investigations, Family Preservation, and Family Support stages for the prior four state fiscal years. Outcome is calculated 45 days prior to the date of report.

Outcome 1A: Family Support Cases Only: Count of unique Family Support stages open at any point during the month vs average of four prior state fiscal years..

Outcome 1B: Family Preservation Cases Only: Count of unique Family Preservation stages open at any point during the month vs average of four prior state fiscal years..

Outcome 1C: Investigation Cases Only: Count of unique Investigation stages open at any point during the month vs average of four prior state fiscal years.

Outcome 1C_1: Comparison of Investigations that were open at anytime during the month vs investigations opened during the month vs the average of the prior state fiscal years at any point in time.

Sources: SHINES

Outcome II: Recurrence of Substantiated Child Maltreatment

Of all the children who were victims of substantiated maltreatment in the first 6 months of the year, the percentage that had substantiated maltreatment within the following 6 months. Outcome is calculated 45 days prior to the date of report. Each month is calculated as a rolling calendar year. *National Standard: less than or equal to 5.40%*

Source: SHINES

Outcome III: Disposition of Child Abuse and Neglect Reports

Chart reflects the disposition of reports received in a particular month. Data includes count of Family Support, Investigations -- Substantiated Investigations and Unsubstantiated Investigations, and Screen-outs. Outcome is calculated 45 days prior to the date of report.

Source: SHINES

PERMANENCY: Children have permanency and stability in their living situations.

Outcome IV: Subsequent Case-type of Investigations by Disposition

Chart reflects the disposition of investigations received in a particular month by the subsequent case type. Charts are broken out by substantiated and unsubstantiated investigation and their subsequent track assignment or final disposition. Outcome is calculated 45 days prior to the date of report.

Source: SHINES

Outcome V: Number of Child Placement Services Cases

Count of unique children who were involved in an open Foster Care or Adoption stage during the month. In placement services each child who is the principal (PC) is considered a case. The chart also reveals the average of the last four state fiscal years to provide the viewer with a prior glimpse of the trend in placement cases.

Source: SHINES

Outcome VI: Children in the Legal Custody of DFCS Under the Age of 18

Count of unique children who were in the legal custody of DFCS (17 years of age and under) at some point during the month.

Source: SHINES

Outcome VI-A: Age Distribution of Children in Custody: Chart is a percentage of children in DFCS Custody by age group.

Outcome VII: Comparison of Foster Care Entries & Exits

Number of children who have entered foster care and number of children who have exited foster care during the month. Total children at end of month show the number of children on the last day of the month.

Source: SHINES

Outcome VIII: Foster Care Re-entries

Of all the children who entered foster care, the percentage that were discharged from a prior episode of foster care within 12 months of the current foster care placement. National Standard: less than or equal to 8.60%.

Source: SHINES

PERMANENCY cont'd: Children have permanency and stability in their living situations.

Outcome IX: Foster Care Length of Stay

Percentage of children by number of months in foster care during each month.

Source: SHINES

Outcome X: Length of Time to Achieve Reunification

Percentage of children who exited care during the month through reunification with their family that reunified in less than 12 months from the date of their removal. National Standard: greater than or equal to 76.20%

Source: SHINES

Outcome XI: Children Placed with Relatives

Of all children in DFCS custody, the percentage that are placed with a relative or a relative foster home.

State Target: greater than or equal to 30.00%

Source: SHINES

Outcome XII: Extended Youth Services

Number of children ages 18 – 21 who remained in the custody of DFCS beyond their birth month.

Source: SHINES

Outcome XIII: Monthly Discharges

The number of children who were discharged during the month by permanency decision divided into two charts by positive permanency vs other types.

Source: SHINES

Outcome XIII - A: Average Number of Months to Achieve Positive Permanency

Of all children in Outcome XIII, the number of months from removal (entry into foster care) until exit due to reunification, relative, adoption or guardianship..

Source: SHINES

PERMANENCY cont'd: Children have permanency and stability in their living situations.

Outcome XIV: Placement Stability Performance (Number of Moves/Number of Days in Custody * 1000)

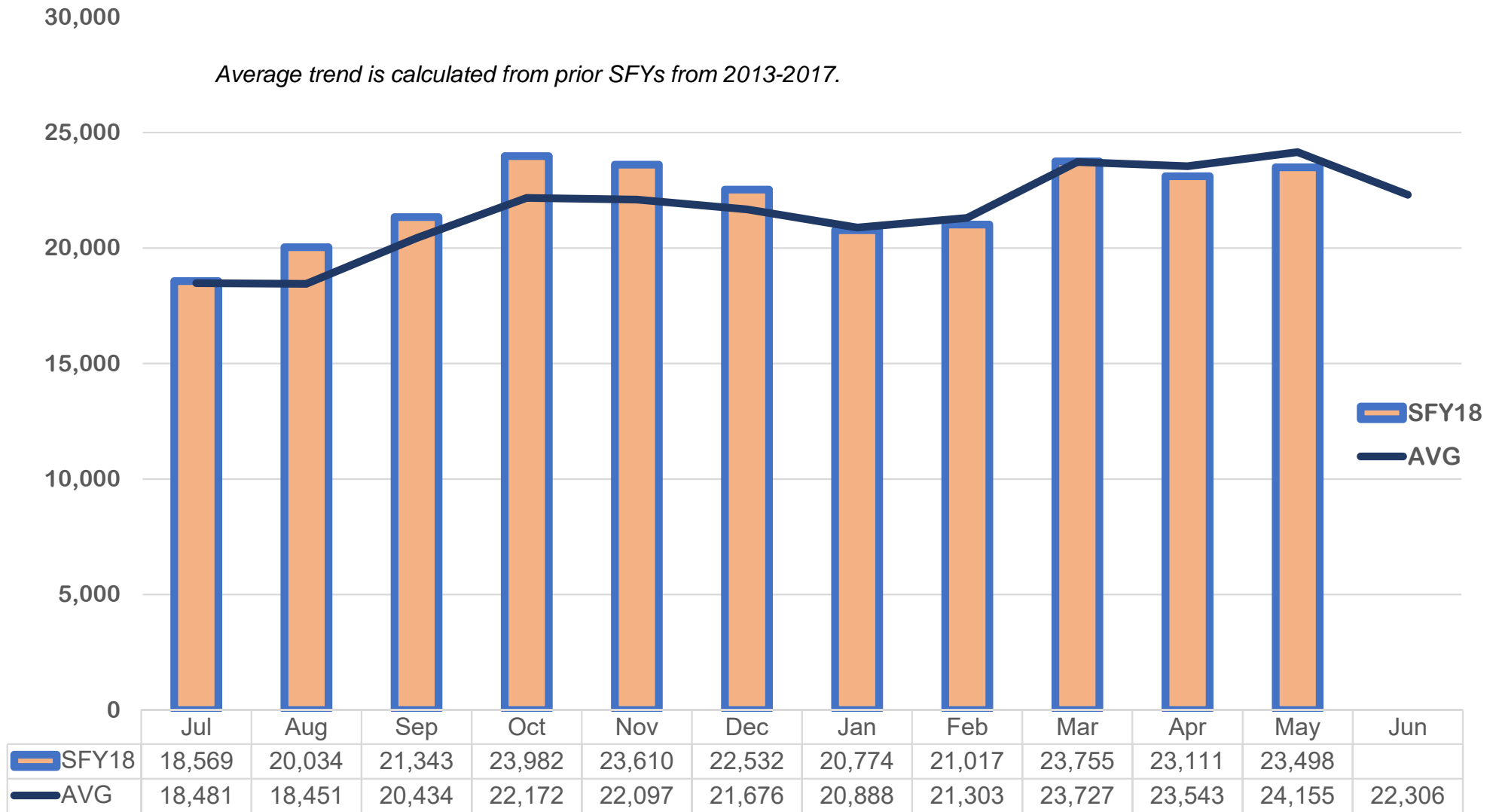
A calculated value based upon the ACF CFSSR Round 3 which is part of Program Improvement. It is calculated from a rolling 12 month population of the entry cohort where the child remained in custody for over 8 days and was not 18 on the date of removal. The federal standard is 4.12.

Source: SHINES

***Note: Data may vary from month to month due to 13 month data trends being re-run over the time span for the various outcomes in this report.*

DIVISION OF FAMILY & CHILDREN SERVICES

How many CPS Cases were opened monthly during the State Fiscal Year to date?

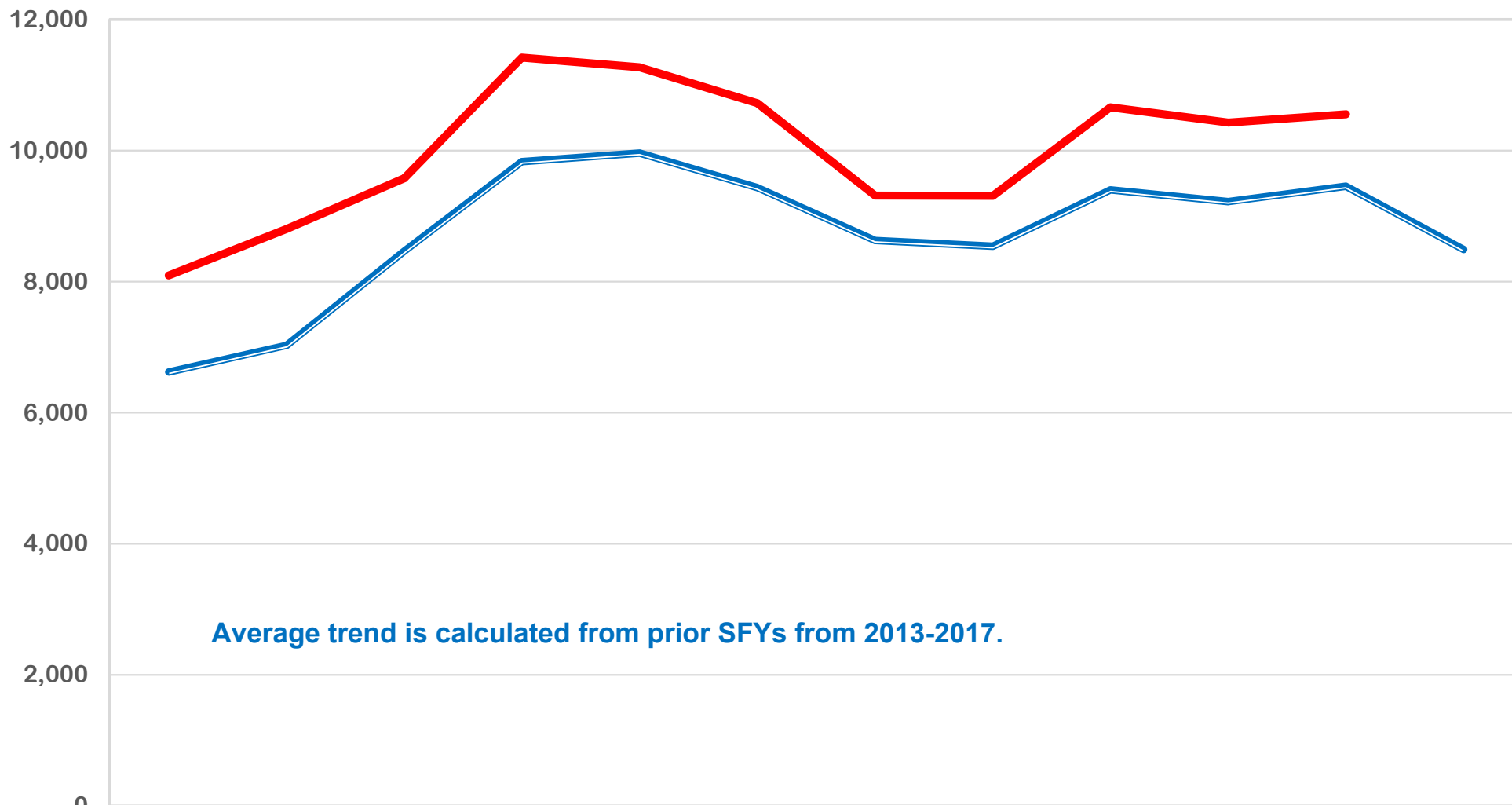


Outcome I: Child Protective Services Cases, (State Fiscal Year 2018 To Date)

DIVISION OF FAMILY & CHILDREN SERVICES

How many Family Support Cases were open per month during the State Fiscal Year to Date?

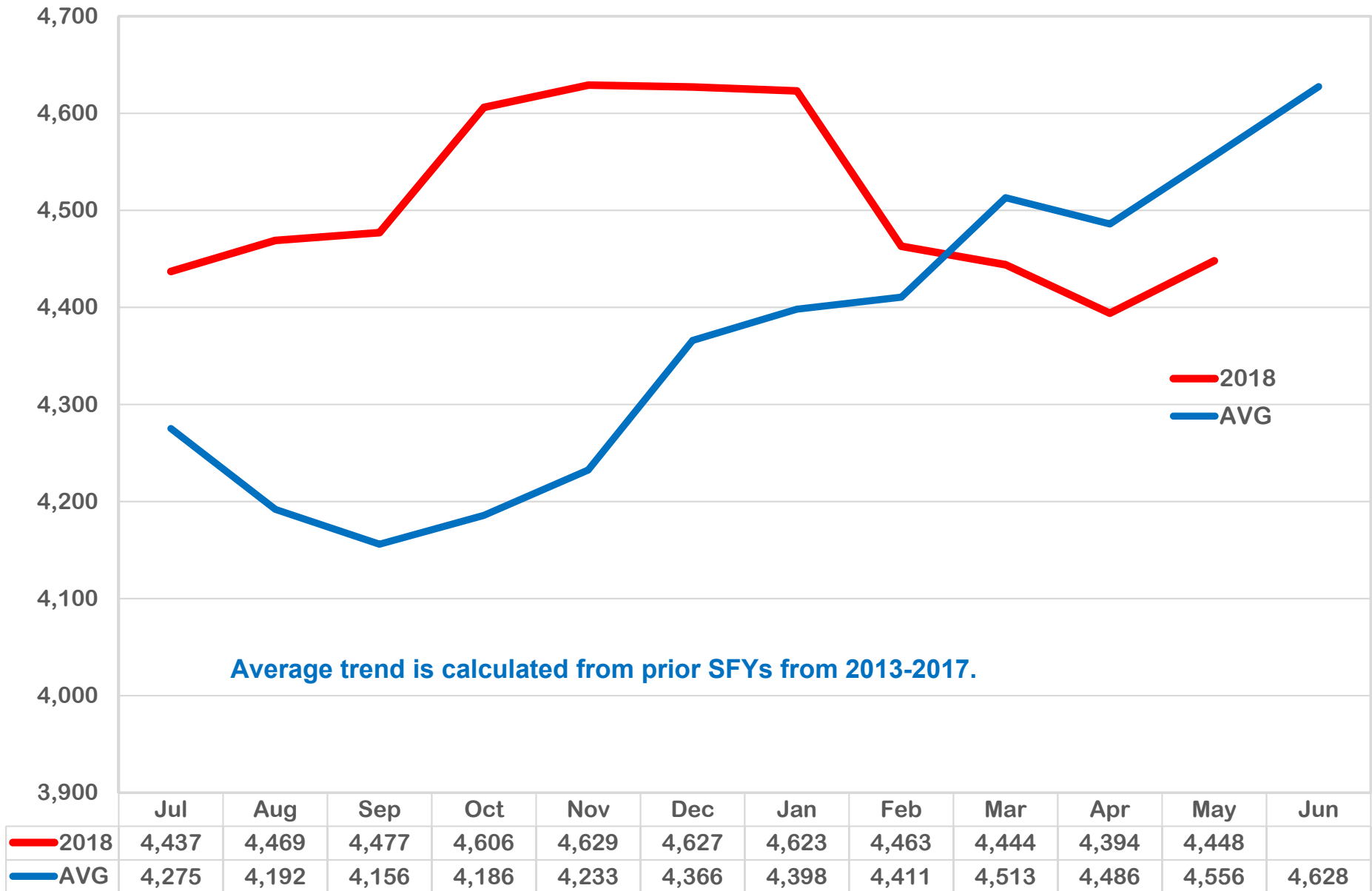
— 2018 — AVG



	Jul	Aug	Sep	Oct	Nov	Dec	Jan	Feb	Mar	Apr	May	Jun
— 2018	8,095	8,804	9,576	11,419	11,270	10,723	9,314	9,309	10,661	10,429	10,554	
— AVG	6,622	7,028	8,466	9,832	9,962	9,435	8,630	8,540	9,399	9,221	9,456	8,490

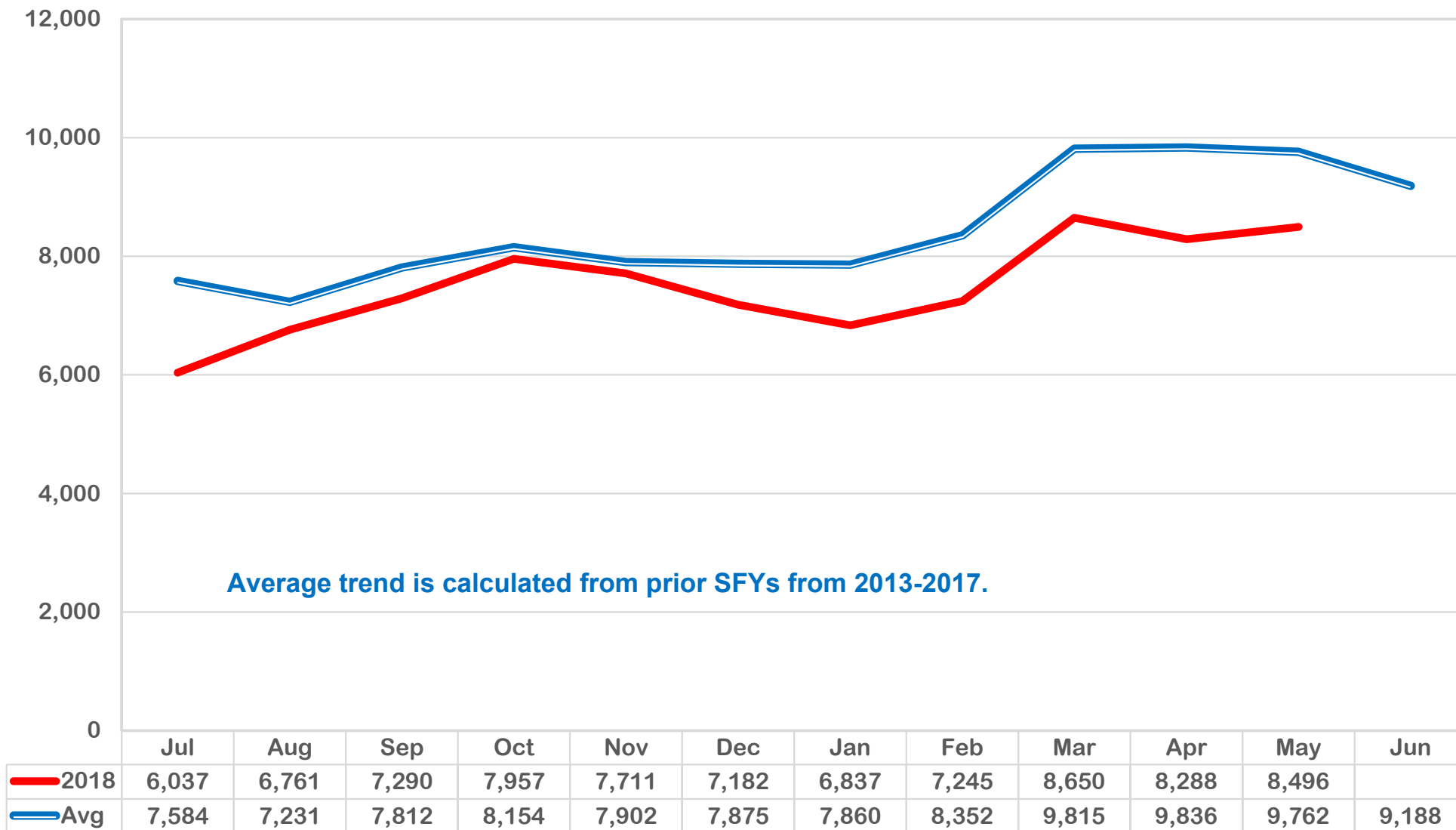
DIVISION OF FAMILY & CHILDREN SERVICES

How many Family Preservation Cases were open per month during the State Fiscal Year to Date?



DIVISION OF FAMILY & CHILDREN SERVICES

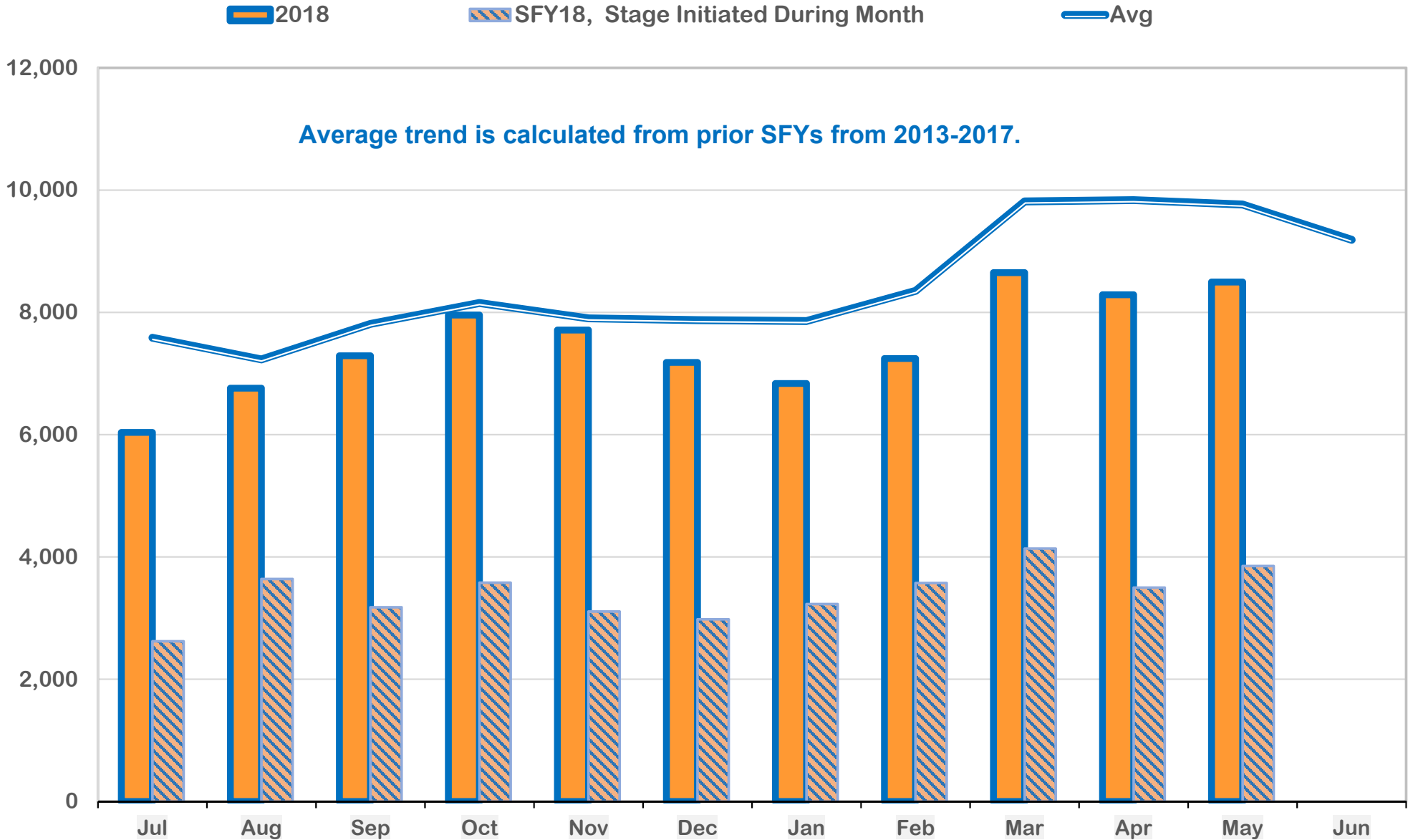
How many Investigation Cases were open per month during the State Fiscal Year to Date?



The current year's total investigations reveals an improvement in investigations as indicated in the lower case loads average when compared to the four SFY average trend.

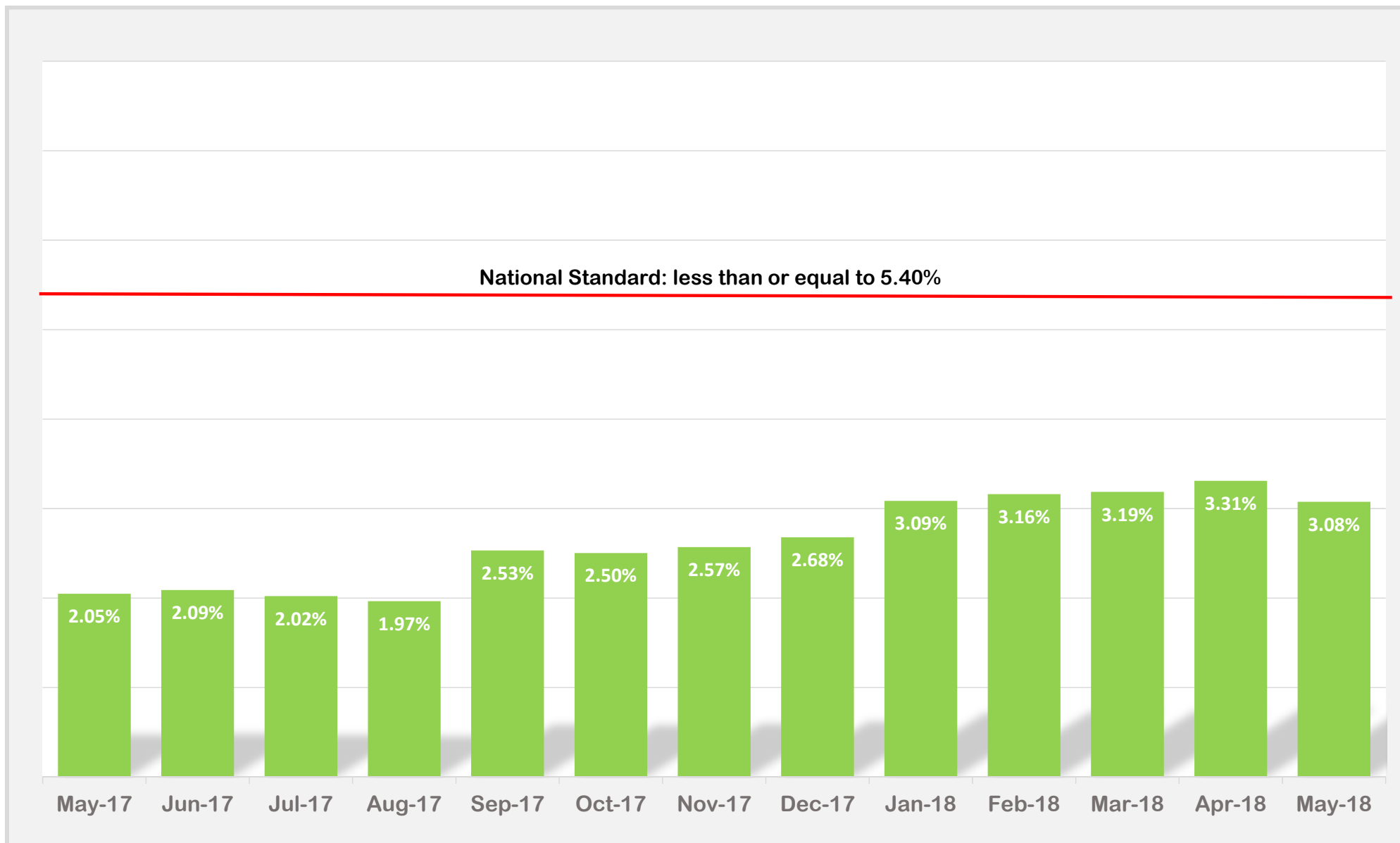
DIVISION OF FAMILY & CHILDREN SERVICES

How many Investigation Cases were open per month during the State Fiscal Year to Date Vs Those That were Initiated During the month?



Outcome IC_1: Child Protective Services Cases Investigation Cases Only (State Fiscal Year 2018 To Date)

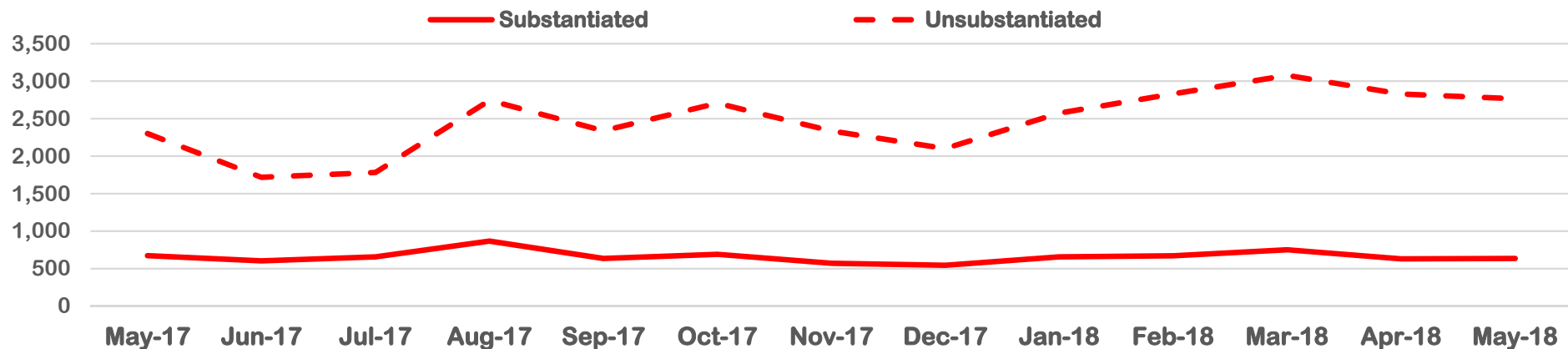
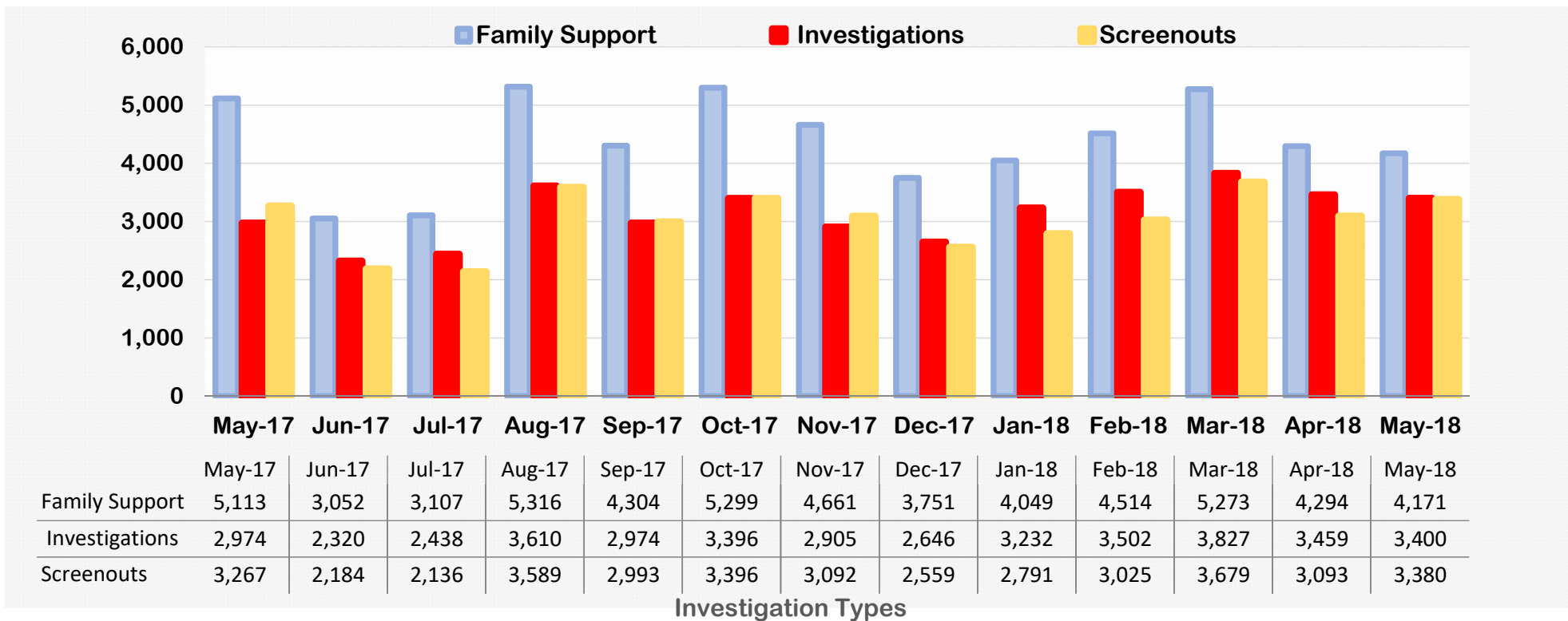
What percentage of children had a subsequent substantiated incident of maltreatment within 6 months?



Outcome II: Recurrence of Substantiated Child Maltreatment (May 2017 – May 2018)

DIVISION OF FAMILY & CHILDREN SERVICES

What was the disposition of all CPS reports received during the month ?

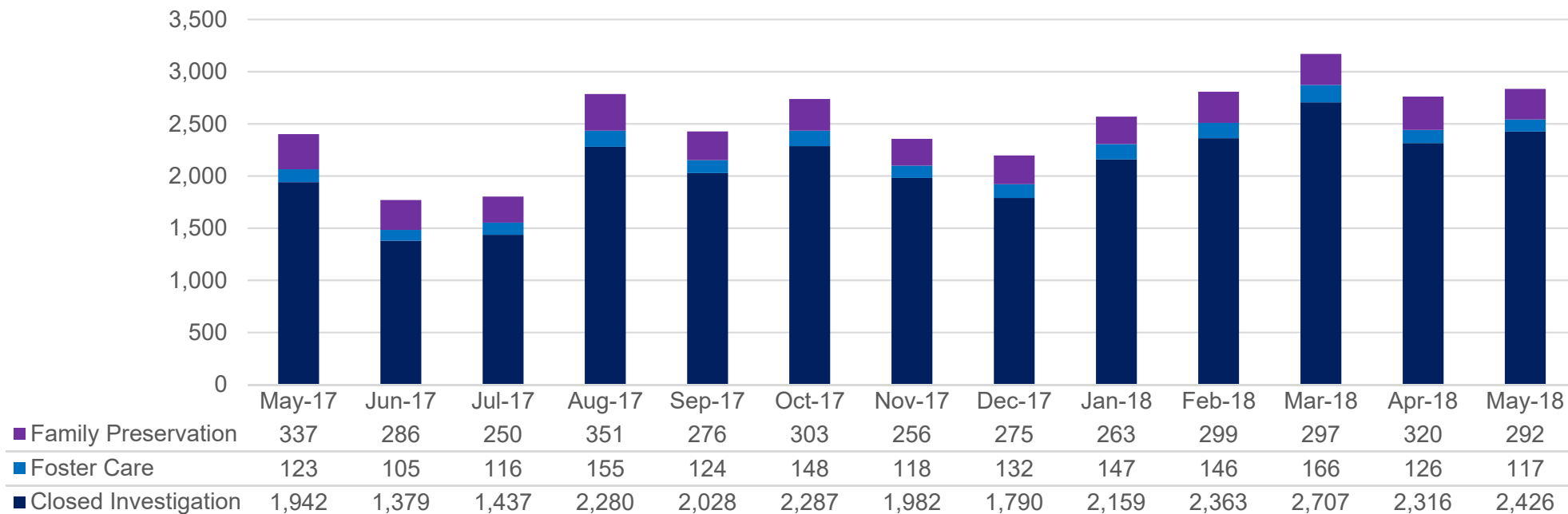
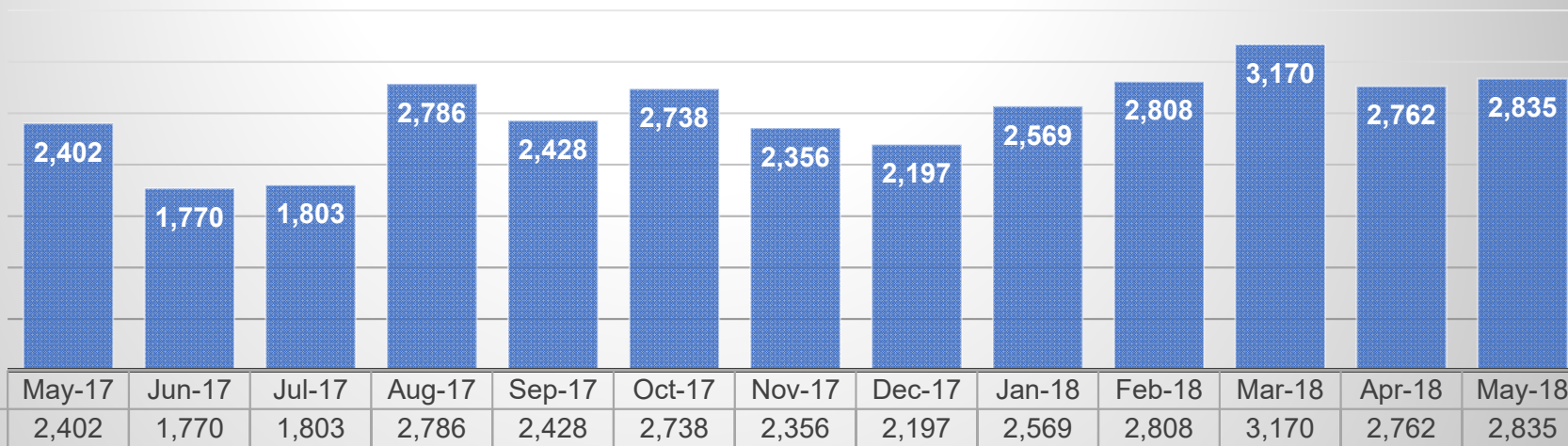


Outcome III: Disposition of Child Abuse and Neglect Reports (May 2017 – May 2018)

What was the final disposition of closed investigations during the month?

DIVISION OF FAMILY & CHILDREN SERVICES

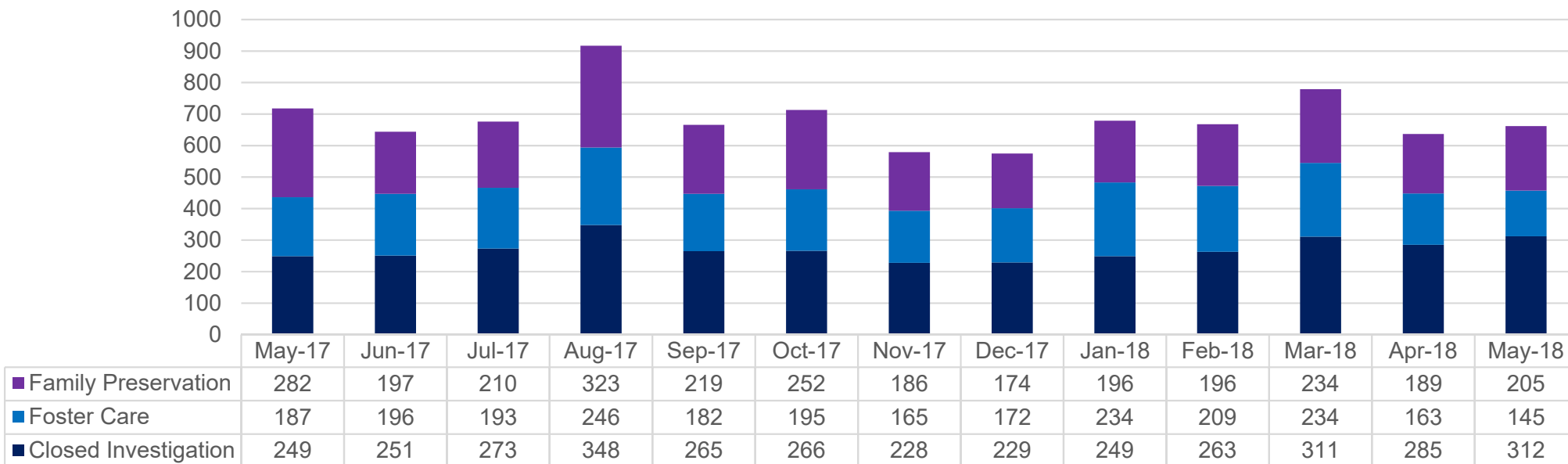
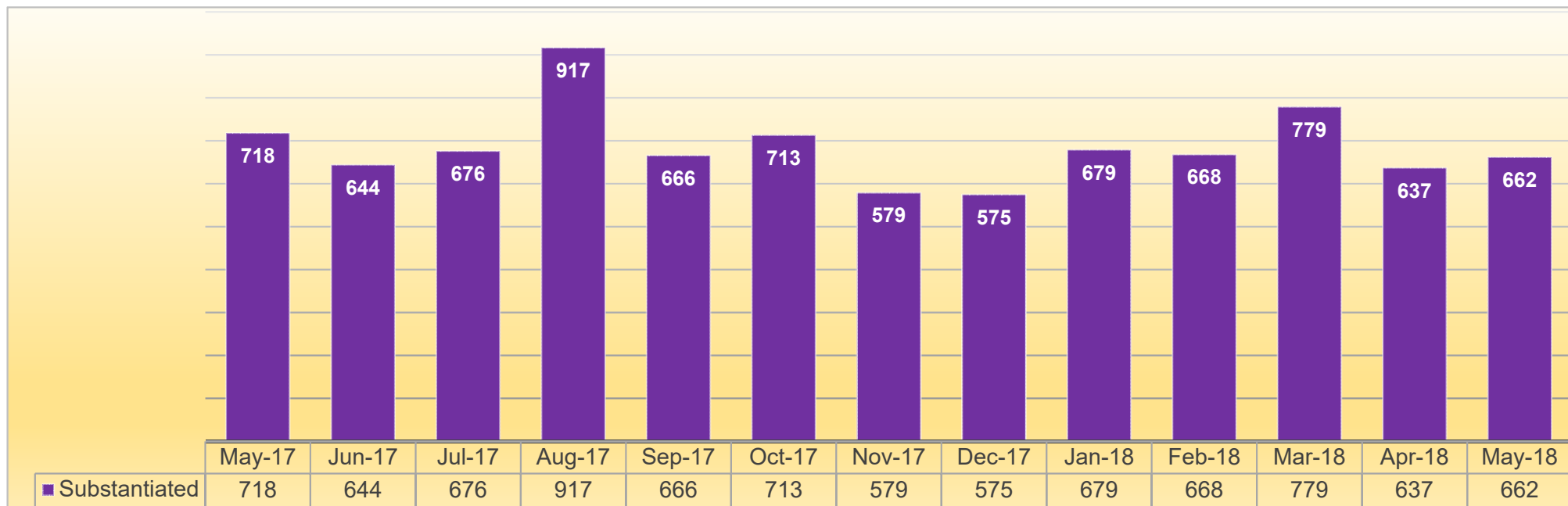
Unsubstantiated



Outcome IV: Subsequent Case-Types of Investigations (May 2017 – May 2018)

DIVISION OF FAMILY & CHILDREN SERVICES

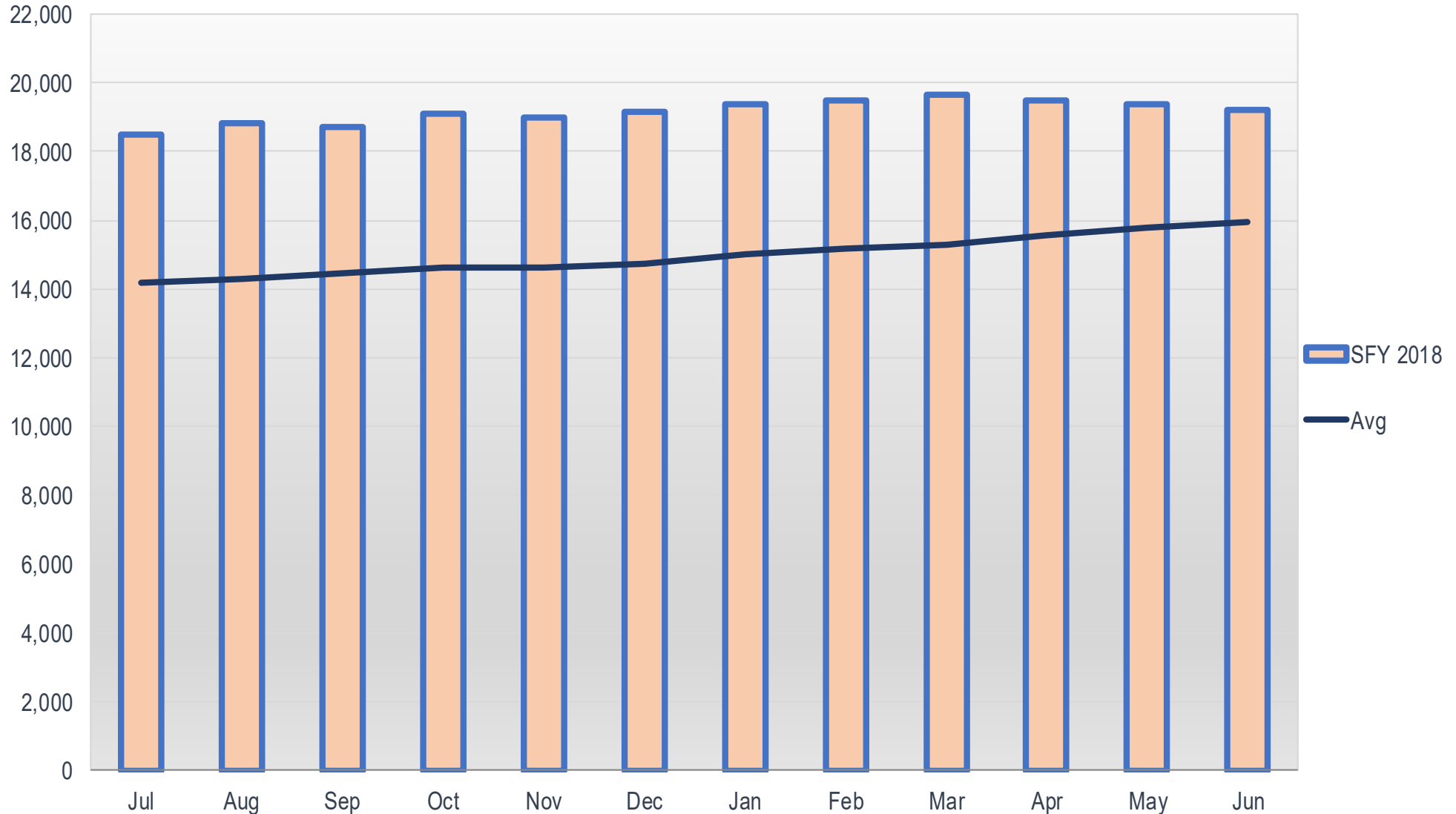
Substantiated:



Outcome IV: Subsequent Case-Types of Investigations (May 2017 – May 2018)

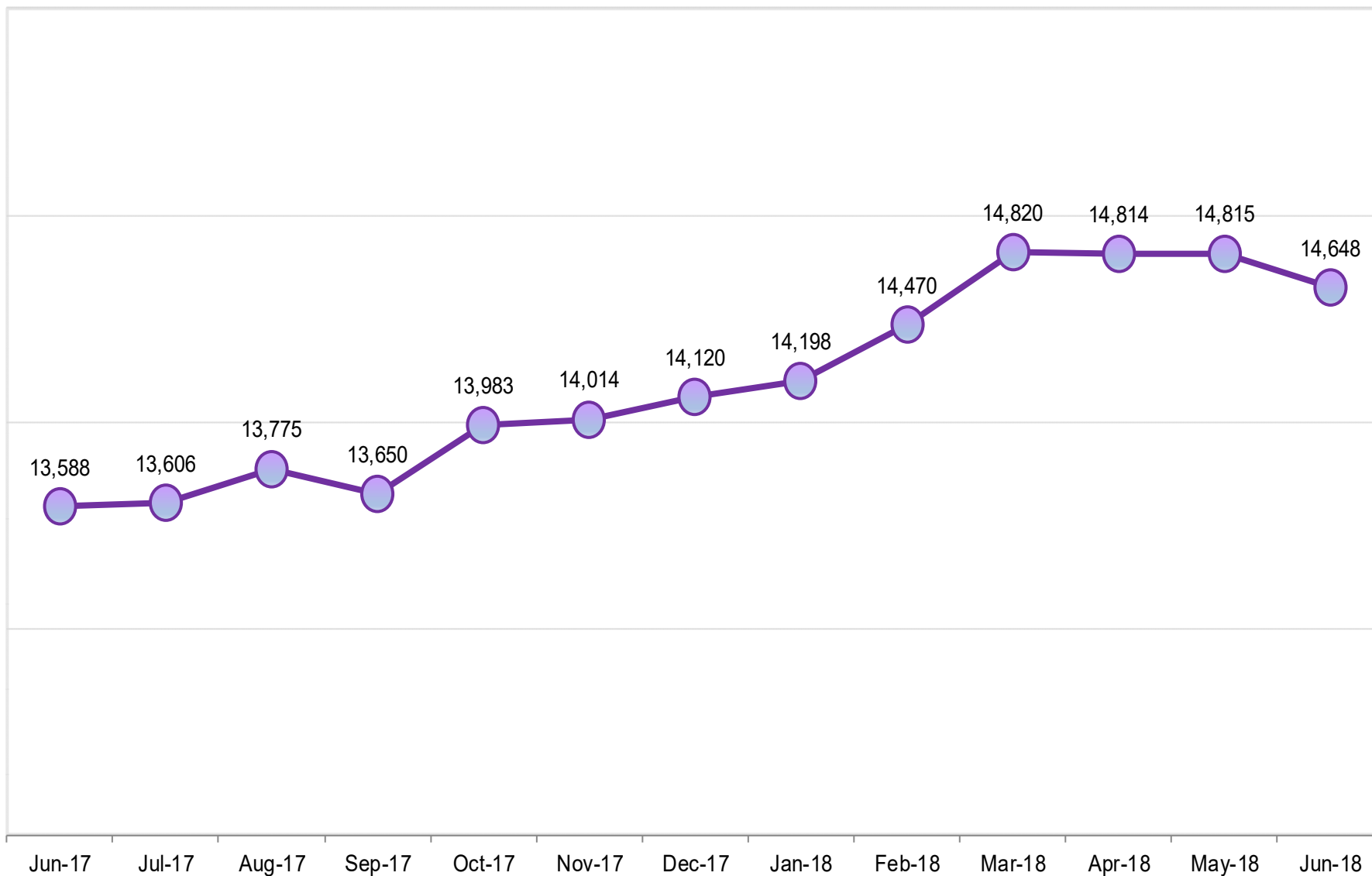
How many children were involved placement services for each month during the State Fiscal Year?

This graph reveals a reduction in the number of cases that are open for services in April and May. The average trend for the past four years shows a gradual increase (low slope) in cases. The placement services include continued collaboration with families after out of home care may have ended as well as those who are in out of home care with DFCS Age 0 - 21.



Outcome V: Number of Children in Placement Services (State Fiscal Year 2018 To Date)

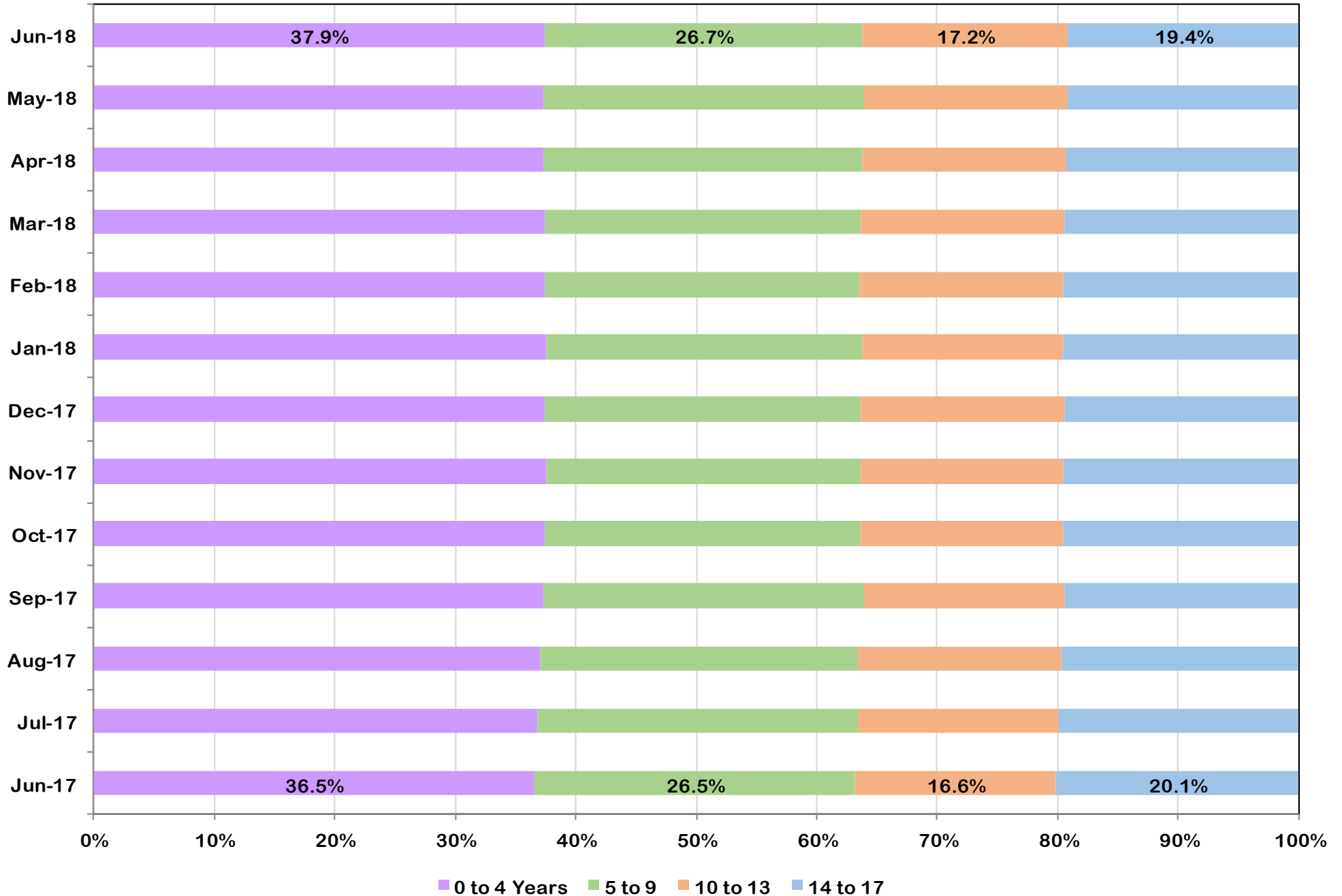
How many children were in Foster Care under the age of 18?



Outcome VI: Children in DFCS Custody Under the Age of 18 (June 2017 – June 2018)

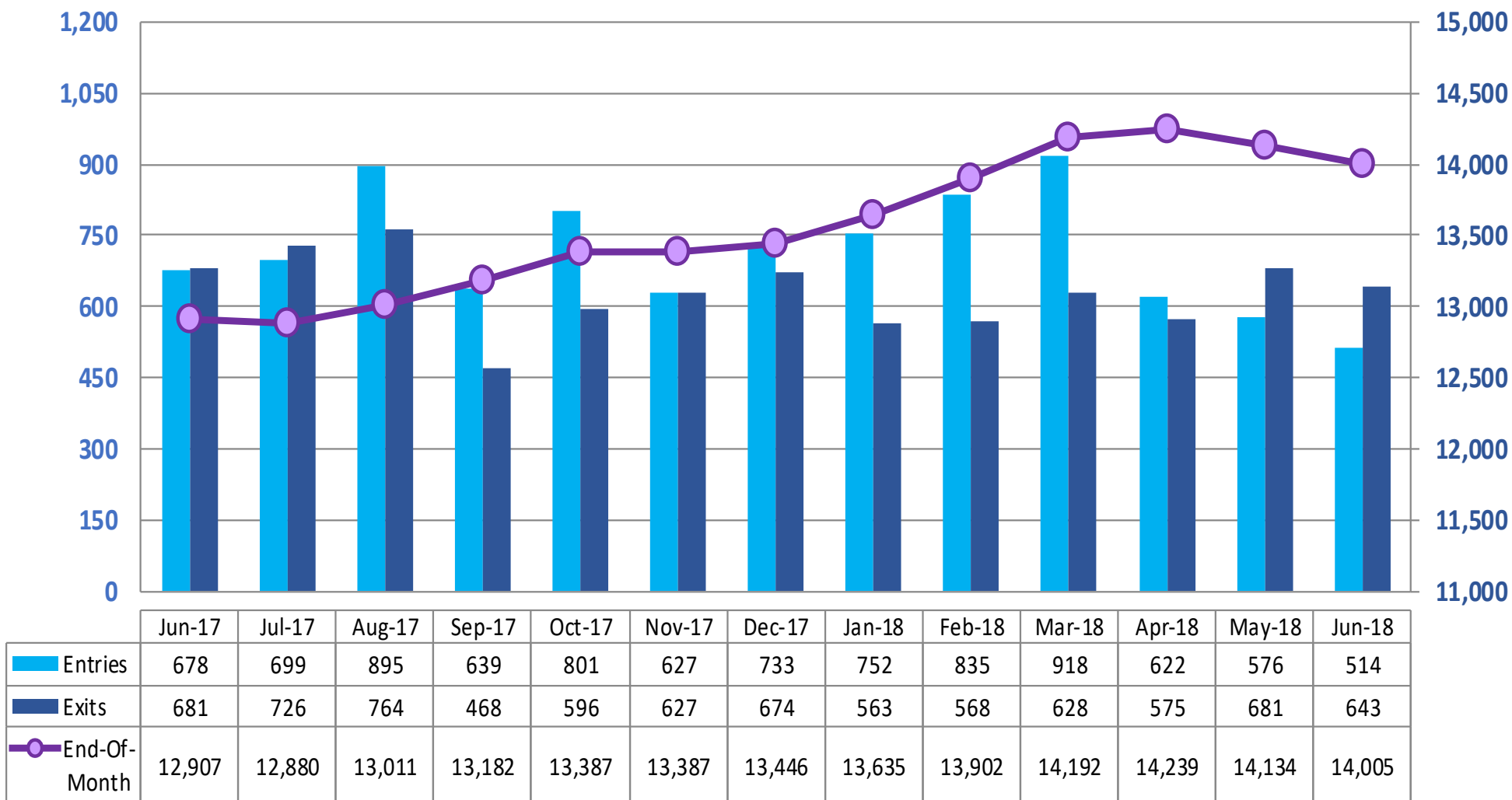
DIVISION OF FAMILY & CHILDREN SERVICES

Has the age distribution of the foster population changed much over the last year?



DIVISION OF FAMILY & CHILDREN SERVICES

How many children are moving in and out of Foster Care? How many remain in care on the last day?

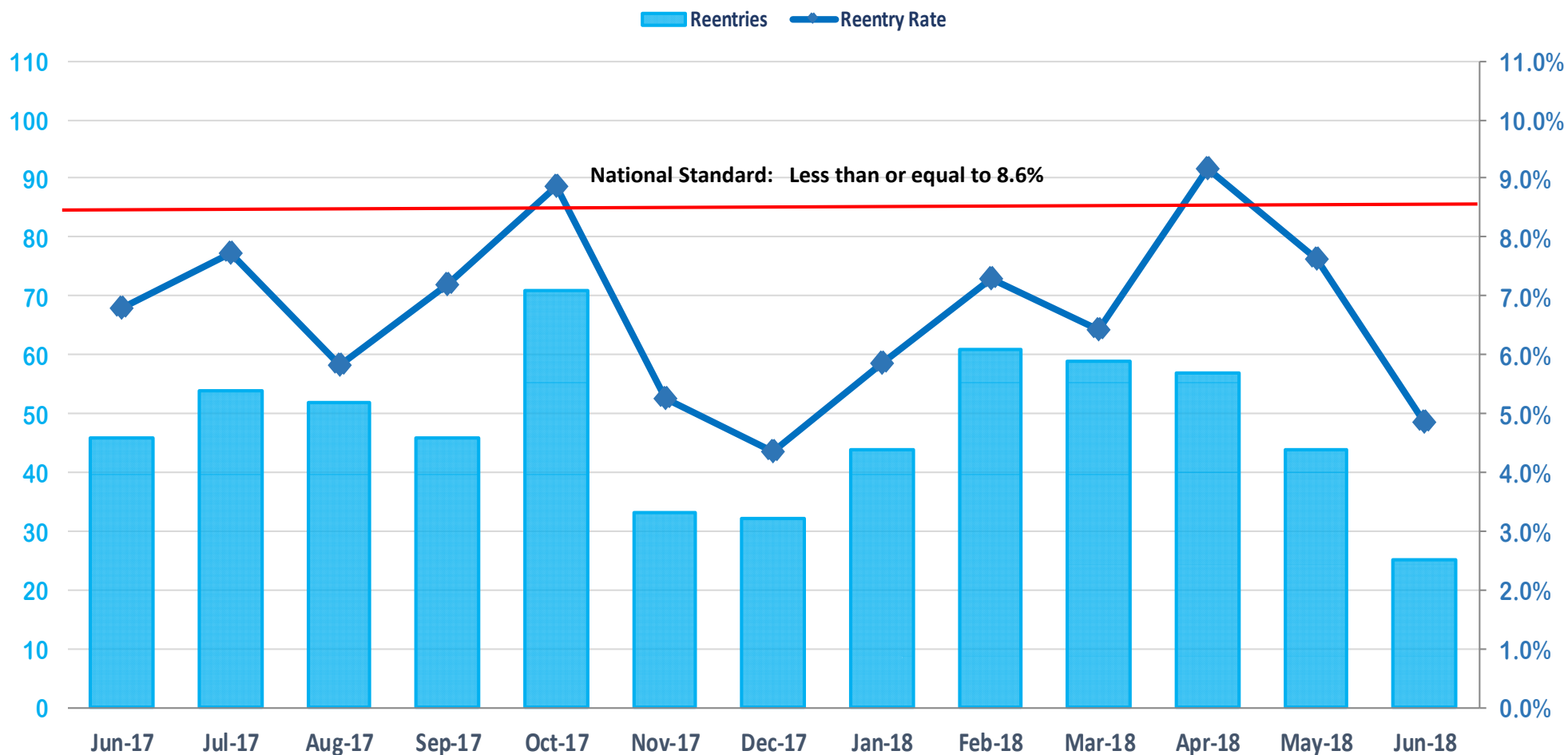


Outcome VII: Comparison of Foster Care Entries and Exits (June 2017 – June 2018)

**Reentries that occur within the same month are not double counted in the entries and exits on this chart. This chart represents unique population and movement into custody during the month.

DIVISION OF FAMILY & CHILDREN SERVICES

How many children were in a prior episode within twelve months of the current episode?

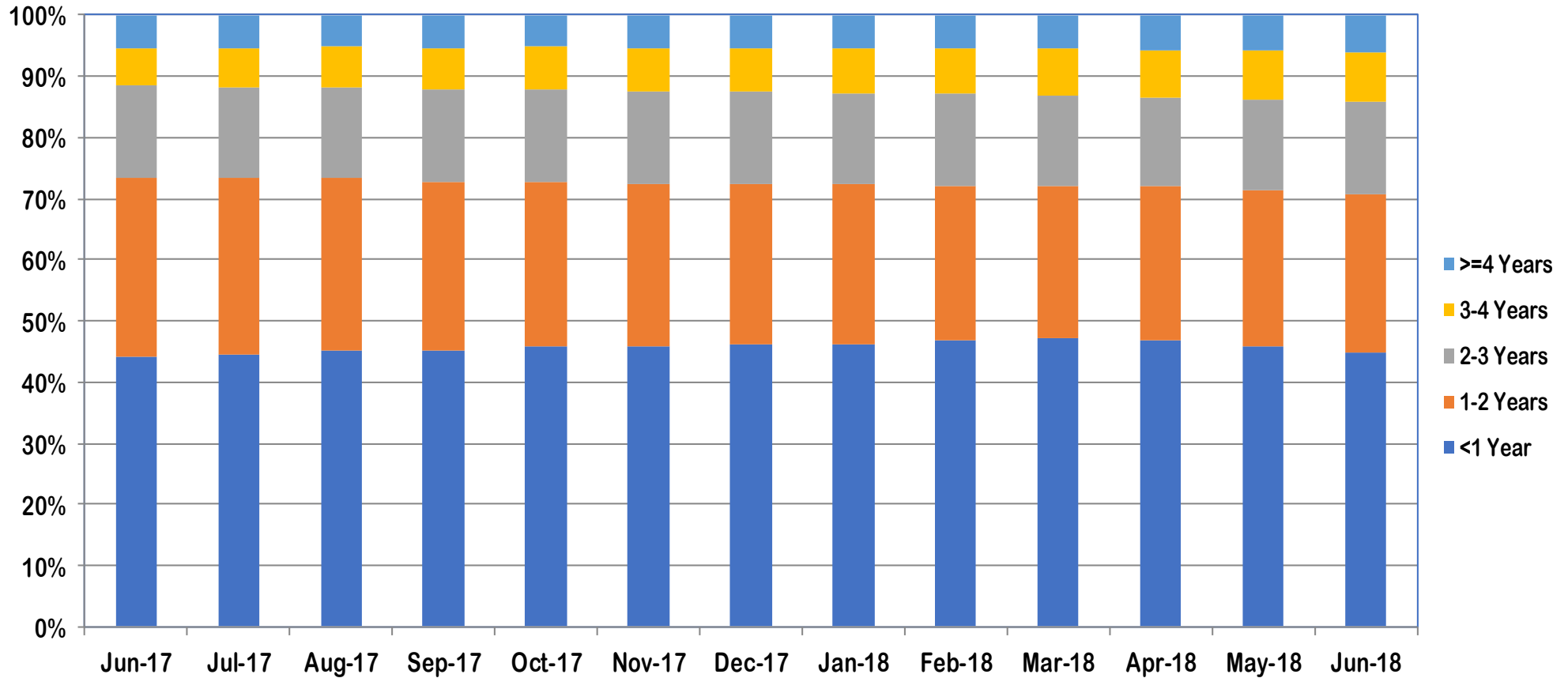


Jun-17	Jul-17	Aug-17	Sep-17	Oct-17	Nov-17	Dec-17	Jan-18	Feb-18	Mar-18	Apr-18	May-18	Jun-18
46	54	52	46	71	33	32	44	61	59	57	44	25
6.8%	7.7%	5.8%	7.2%	8.9%	5.3%	4.4%	5.9%	7.3%	6.4%	9.2%	7.6%	4.9%

Outcome VIII: Foster Care Re-Entries (June 2017 – June 2018)

DIVISION OF FAMILY & CHILDREN SERVICES

What percentage of foster children have been in care for less than a year, less than 2 years . . . each month?

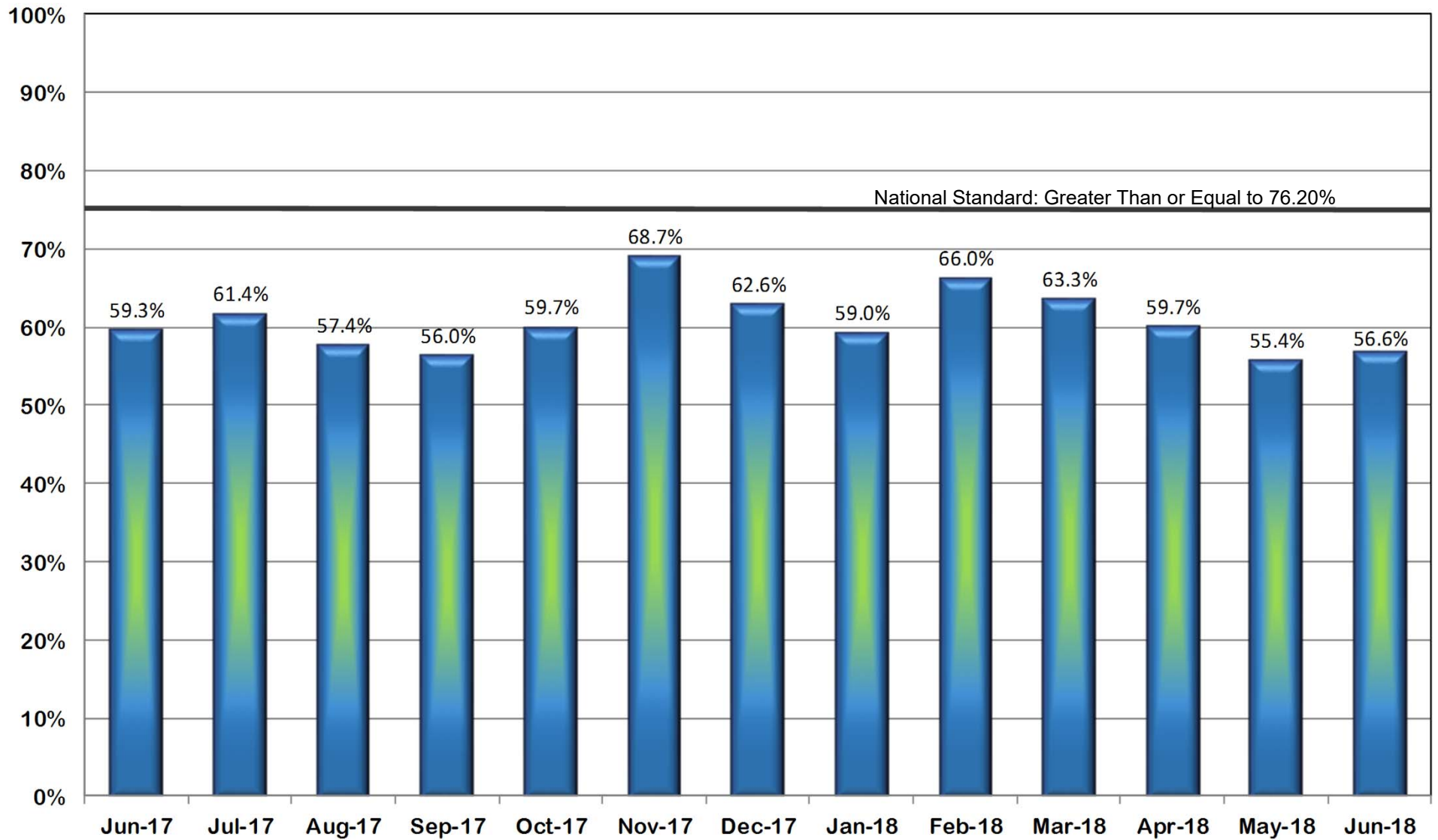


	Jun-17	Jul-17	Aug-17	Sep-17	Oct-17	Nov-17	Dec-17	Jan-18	Feb-18	Mar-18	Apr-18	May-18	Jun-18
>=4 Years	5.5%	5.3%	5.3%	5.4%	5.3%	5.4%	5.4%	5.4%	5.4%	5.6%	5.7%	5.7%	6.2%
3 - <4 Years	6.0%	6.4%	6.6%	6.9%	7.0%	7.2%	7.3%	7.4%	7.5%	7.4%	7.8%	8.0%	7.9%
2 - <3 Years	15.1%	15.0%	14.9%	15.2%	15.2%	15.1%	14.8%	14.8%	15.1%	14.8%	14.6%	14.8%	15.3%
1 - <2 Years	29.4%	28.9%	28.1%	27.4%	26.7%	26.5%	26.3%	26.0%	25.2%	25.1%	25.2%	25.5%	25.8%
<1 Year	44.0%	44.4%	45.1%	45.1%	45.8%	45.8%	46.1%	46.3%	46.8%	47.0%	46.7%	45.9%	44.8%

Outcome IX: Foster Care Length of Stay (June 2017 – June 2018)

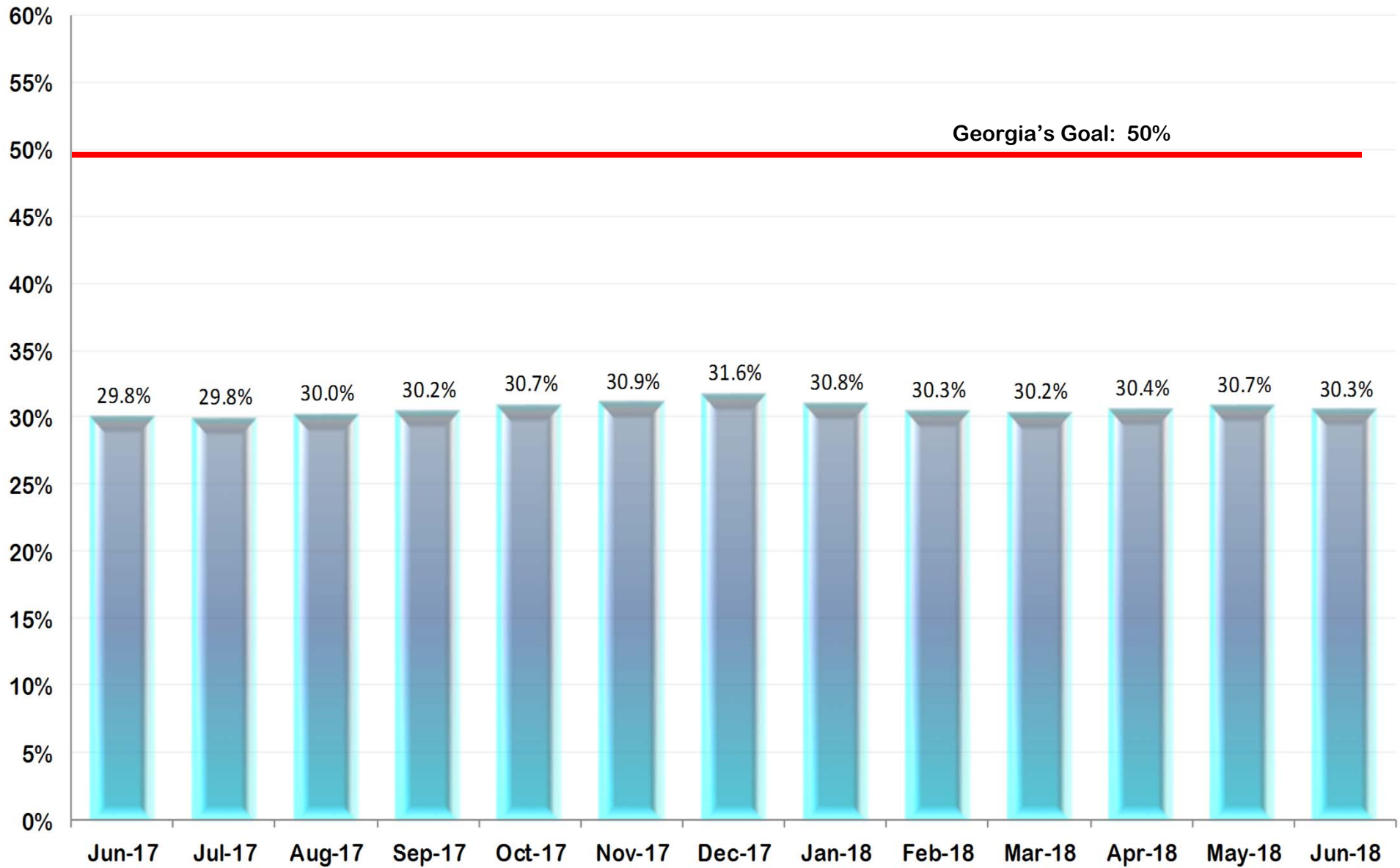
DIVISION OF FAMILY & CHILDREN SERVICES

What percentage of reunifications occurred within twelve (12) months of the child entering foster care?



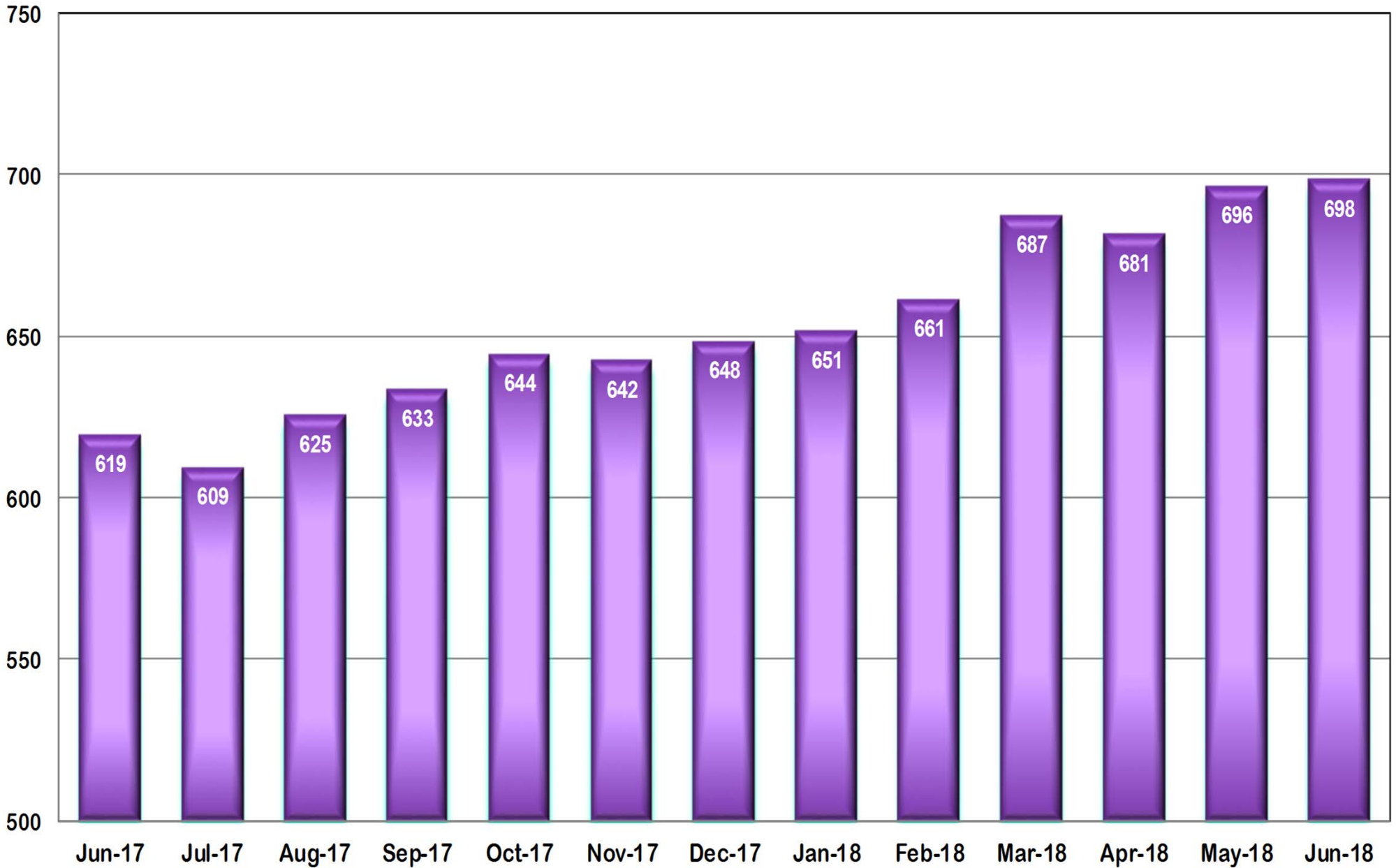
Outcome X: Length of Time to Reunification (June 2017 – June 2018)

What percentage of children in Foster Care were placed with a relative during the month?



DIVISION OF FAMILY & CHILDREN SERVICES

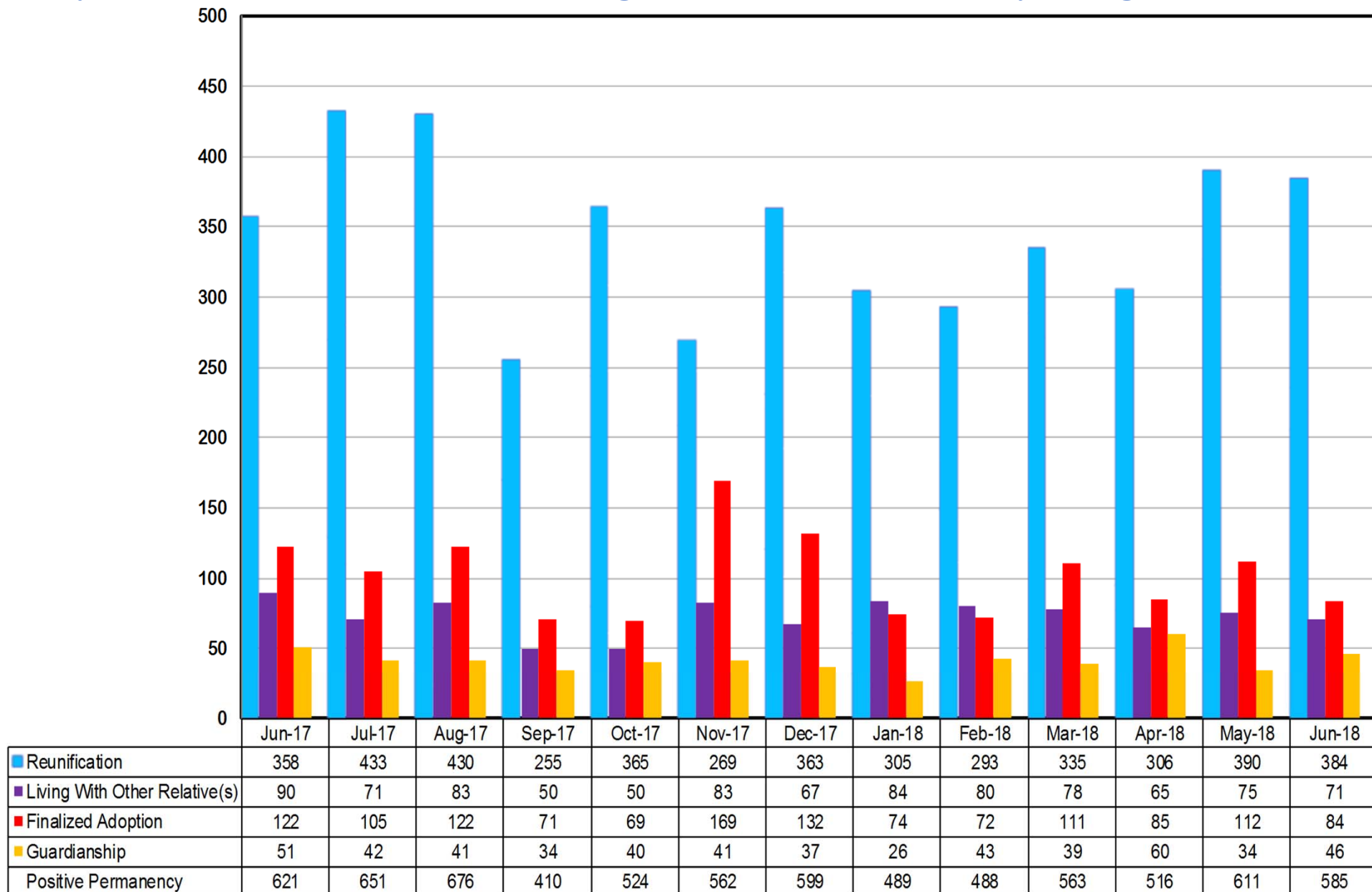
How many children remained in Foster Care after the age of 18?



Outcome XII: Extended Youth Services (June 2017 – June 2018)

DIVISION OF FAMILY & CHILDREN SERVICES

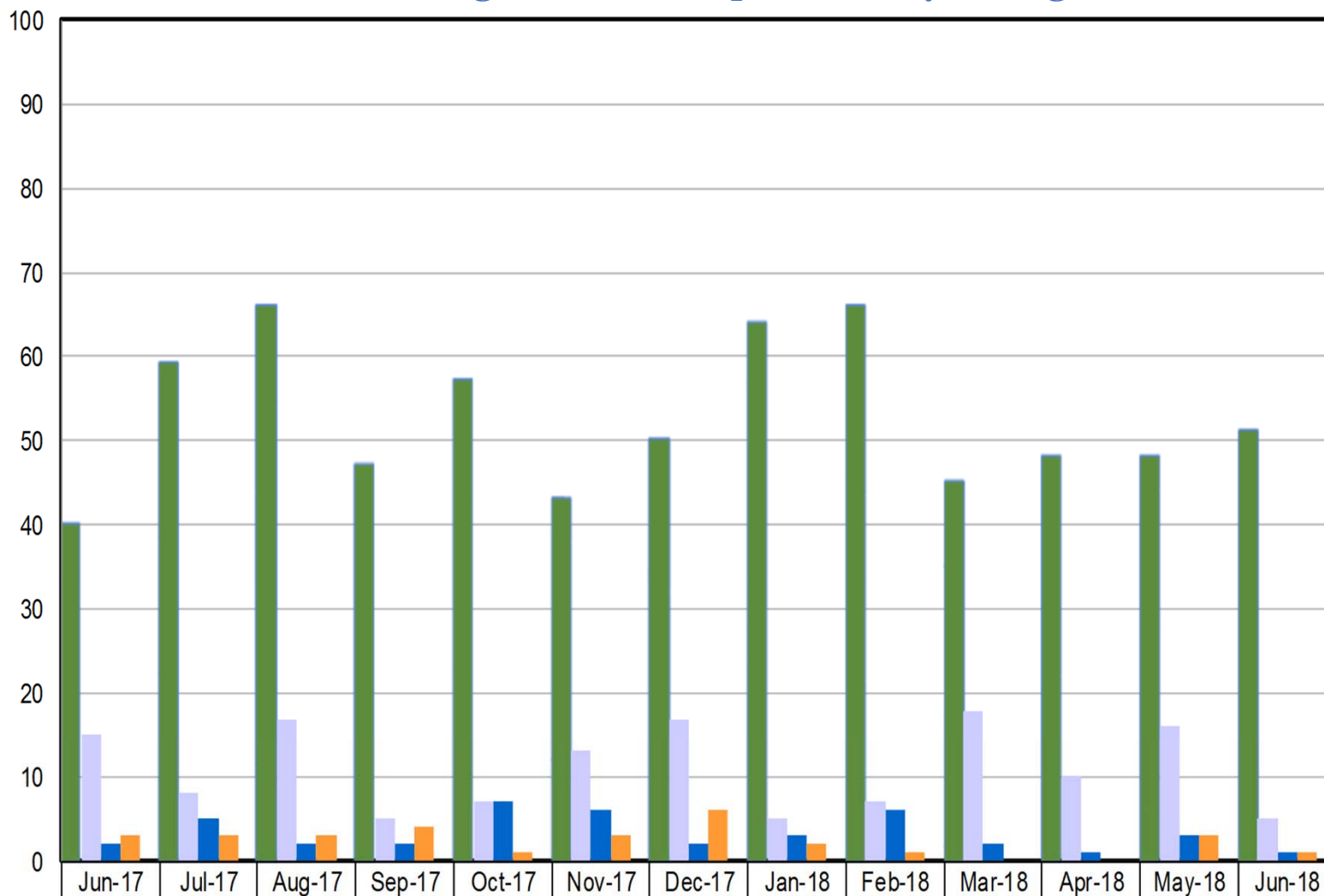
How many children in Foster Care were discharged to a positive permanency during the month?



Outcome XIII: Number of Discharges (June 2017 – June 2018)

DIVISION OF FAMILY & CHILDREN SERVICES

How many children in Foster Care were discharged to another permanency during the month?

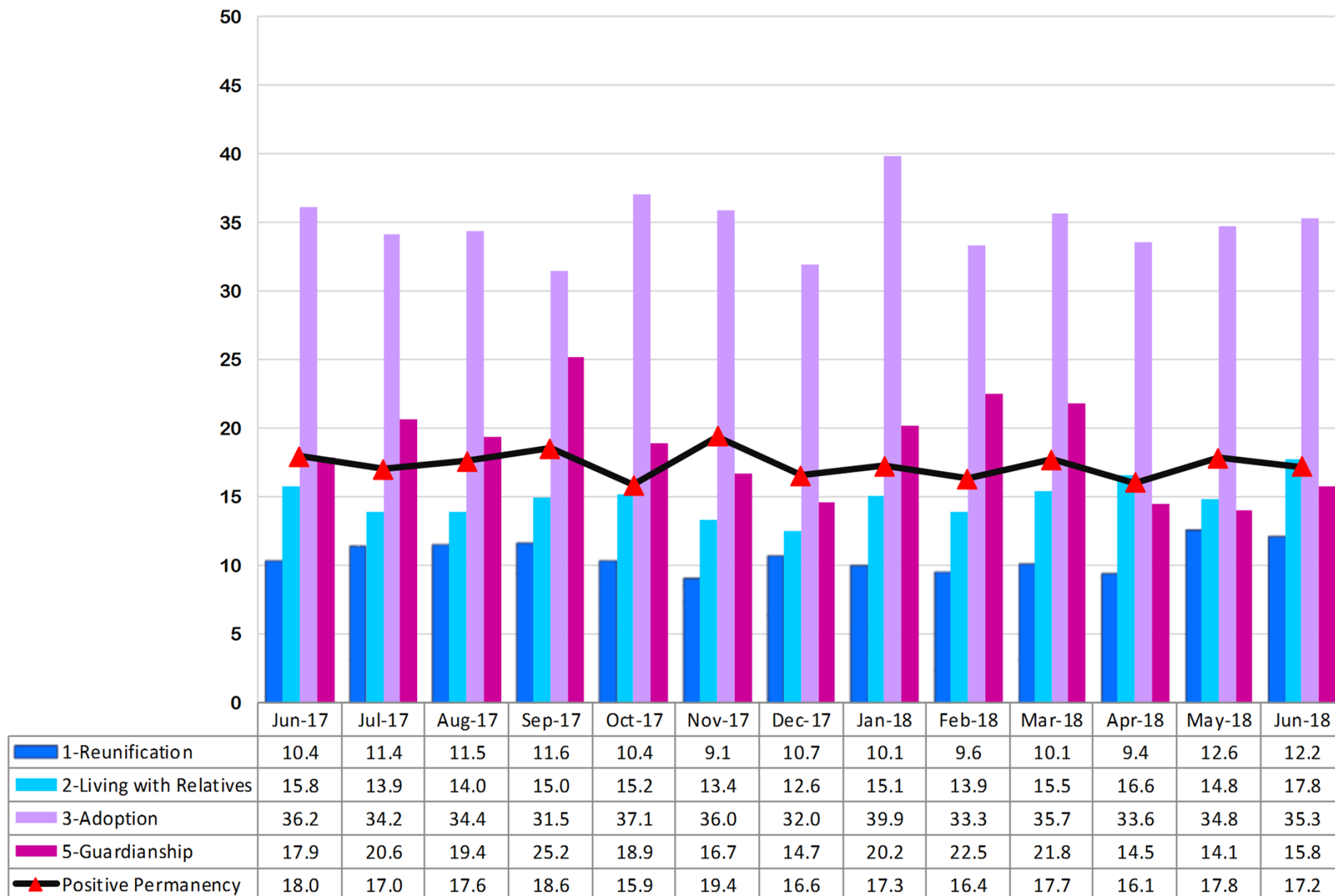


	Jun-17	Jul-17	Aug-17	Sep-17	Oct-17	Nov-17	Dec-17	Jan-18	Feb-18	Mar-18	Apr-18	May-18	Jun-18
Emancipation	40	59	66	47	57	43	50	64	66	45	48	48	51
Transfer to Another Agency	15	8	17	5	7	13	17	5	7	18	10	16	5
Runaway	2	5	2	2	7	6	2	3	6	2	1	3	1
Death of Child	3	3	3	4	1	3	6	2	1	0	0	3	1
Other Permanency	60	75	88	58	72	65	75	74	80	65	59	70	58

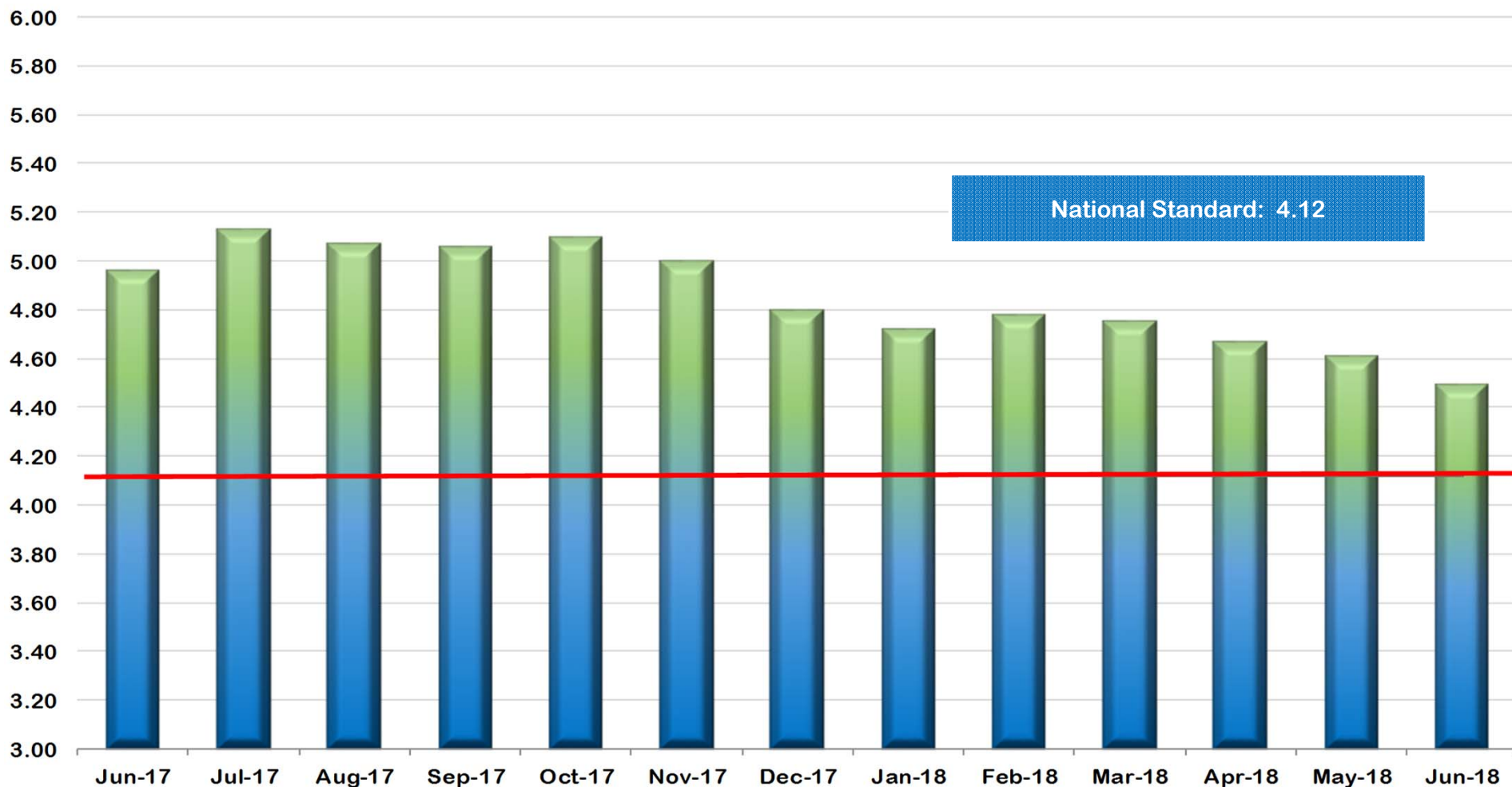
Outcome XIII: Number of Discharges (June 2017 – June 2018)

DIVISION OF FAMILY & CHILDREN SERVICES

What is the average time in months for a foster child to reach positive permanency?



How is the state of Georgia performing on the federal measure of Placement Stability?



Jun-17	Jul-17	Aug-17	Sep-17	Oct-17	Nov-17	Dec-17	Jan-18	Feb-18	Mar-18	Apr-18	May-18	Jun-18
4.96	5.13	5.07	5.06	5.10	5.00	4.80	4.72	4.78	4.75	4.67	4.61	4.49

Appendices

APPENDIX A

Regional Chart of Outcome VI

**Children in DFCS Custody Under the Age of 18
(June 2017 – June 2018)**

DIVISION OF FAMILY & CHILDREN SERVICES

Outcome VI: Children in DFCS Custody Under the Age of 18 (By Region) (June 2017 – June 2018)

Region	Jun-17	Jul-17	Aug-17	Sep-17	Oct-17	Nov-17	Dec-17	Jan-18	Feb-18	Mar-18	Apr-18	May-18	Jun-18
1	1291	1330	1360	1338	1378	1379	1420	1435	1458	1514	1525	1495	1472
2	773	793	820	814	832	867	878	879	921	974	978	991	985
3	1008	994	999	961	1005	989	996	977	987	985	974	960	966
4	1108	1111	1122	1124	1124	1124	1142	1120	1120	1139	1137	1162	1161
5	1128	1137	1141	1130	1145	1175	1161	1154	1188	1206	1224	1223	1204
6	719	723	733	734	744	767	764	763	775	778	771	767	744
7	487	493	515	509	539	560	581	611	650	693	713	710	716
8	686	687	707	700	706	700	712	717	736	741	744	747	744
9	608	588	587	581	593	580	579	580	590	593	591	588	576
10	776	777	759	747	755	761	787	791	776	770	774	755	753
11	1164	1161	1180	1175	1191	1166	1193	1192	1218	1264	1260	1261	1253
12	780	778	874	887	921	931	924	956	973	1002	1000	1014	999
13	1436	1441	1408	1382	1450	1415	1401	1409	1428	1484	1450	1462	1403
14	1624	1593	1570	1568	1600	1600	1582	1614	1650	1677	1673	1680	1672
Statewide	13588	13606	13775	13650	13983	14014	14120	14198	14470	14820	14814	14815	14648

APPENDIX B

Regional Chart of Outcome XIV

**Placement Stability Performance Coefficient
(June 2017 – June 2018)**

National Standard = 4.12

Desired Goal to Meet the PIP = 6.01

DIVISION OF FAMILY & CHILDREN SERVICES

Outcome VI: Placement Stability for Children in DFCS Custody Under the Age of 18 (By Region) (June 2017 – June 2018)

Region	Jun-17	Jul-17	Aug-17	Sep-17	Oct-17	Nov-17	Dec-17	Jan-18	Feb-18	Mar-18	Apr-18	May-18	Jun-18
1	5.14	5.31	5.22	5.41	5.69	5.72	5.63	5.49	5.66	5.49	5.45	5.32	5.11
2	5.73	5.73	5.65	6.05	5.77	5.48	5.07	5.2	5.41	5.53	5.4	5.23	5.07
3	4.9	5.11	4.81	4.59	4.79	4.7	4.54	4.66	4.74	4.73	4.88	4.85	4.54
4	4.07	4.19	4.2	4.36	4.36	4.64	4.42	4.11	4.07	4.11	3.63	3.54	3.35
5	5.27	5.19	5.3	5.22	5.45	5.28	5.27	5.14	5.08	5.12	5.07	5.21	5.06
6	4.48	4.43	4.17	4.46	4.12	3.95	3.59	3.69	3.65	3.69	3.64	3.46	3.51
7	3.44	3.77	3.69	3.46	3.33	3.4	3.12	2.82	3	2.93	3.09	3.13	2.98
8	4.25	4.44	4.11	3.39	3.54	3.54	3.38	3.08	2.97	2.96	2.73	2.96	3.04
9	3.06	3.24	3.5	3.5	3.32	3.11	3.2	3.27	3.53	3.32	3.18	2.73	3.18
10	4.75	4.95	4.71	4.22	4.05	3.92	3.98	3.89	4.02	3.77	3.4	3.34	2.88
11	3.87	4.01	4.04	3.96	4.09	3.83	3.68	3.48	3.71	4.06	4.09	4.07	4.06
12	4.05	4.26	4.53	4.4	4.76	4.88	4.86	4.93	4.82	4.7	4.35	4.25	4.11
13	7.41	7.8	7.54	7.32	7.35	7.12	6.67	6.57	6.61	6.32	6.31	6.23	6.11
14	5.7	5.89	5.8	6.05	6.14	5.96	5.75	5.77	5.76	5.88	6.1	6.07	6.02
Statewide	4.96	5.13	5.07	5.06	5.10	5.00	4.80	4.72	4.78	4.75	4.67	4.61	4.49