

# Monthly Measures and Results for March 2019\*

\*(Reflects Safety Outcomes as of January 31, 2019 And  
Permanency Outcomes as of February 28, 2019)  
With Appendices

This report is produced by the Data Unit. For questions or comments, you may contact one of the following:  
Steven Reed, Director ([Steven.Reed@dhs.ga.gov](mailto:Steven.Reed@dhs.ga.gov))  
Samantha Adams, Data Unit Manager ([Samantha.Adams@dhs.ga.gov](mailto:Samantha.Adams@dhs.ga.gov))  
Vickie Fluellen, Business Support Analyst 3 ([Vickie.Fluellen@dhs.ga.gov](mailto:Vickie.Fluellen@dhs.ga.gov))

- Part I: Definitions And Data Sources contained in Report**
- Part II: Safety Outcomes**
- Part III: Permanency/Well-being Outcomes**
- Part IV: Appendices**
  - A. Regional Charts of Outcome V (Trend of Unique Children in the Legal Custody of DFCS Under the Age of 18)**
  - B. Regional Charts of Outcome XIV: Stability Performance Coefficient (Number of Moves/Number of Days in Custody \* 1000)**

\*\*\*There are no revisions to this document to date.

**SAFETY: Children are first and foremost, protected from abuse and neglect.**

**Outcome I: Child Protective Services Cases**

Count of unique CPS Investigations and Family Preservation (Ongoing) stages open at any point during the month vs. Average count of unique CPS Investigations, Family Preservation, and Family Support stages for the prior four state fiscal years. Outcome is calculated 45 days prior to the date of report.

Outcome 1A: Family Support Cases Only: Count of unique Family Support stages open at any point during the month vs average of four prior state fiscal years..

Outcome 1B: Family Preservation Cases Only: Count of unique Family Preservation stages open at any point during the month vs average of four prior state fiscal years..

Outcome 1C: Investigation Cases Only: Count of unique Investigation stages open at any point during the month vs average of four prior state fiscal years.

Outcome 1C\_1: Comparison of Investigations that were open at anytime during the month vs investigations opened during the month vs the average of the prior state fiscal years at any point in time.

Sources: SHINES

**Outcome II: Recurrence of Substantiated Child Maltreatment**

Of all the children who were victims of substantiated maltreatment in the first 6 months of the year, the percentage that had substantiated maltreatment within the following 6 months. Outcome is calculated 45 days prior to the date of report. Each month is calculated as a rolling calendar year. *National Standard: less than or equal to 5.40%*

Source: SHINES

**Outcome III: Disposition of Child Abuse and Neglect Reports**

Chart reflects the disposition of reports received in a particular month. Data includes count of Family Support, Investigations -- Substantiated Investigations and Unsubstantiated Investigations, and Screen-outs. Outcome is calculated 45 days prior to the date of report.

Source: SHINES

**PERMANENCY:** Children have permanency and stability in their living situations.

## **Outcome IV: Subsequent Case-type of Investigations by Disposition**

Chart reflects the disposition of investigations received in a particular month by the subsequent case type. Charts are broken out by substantiated and unsubstantiated investigation and their subsequent track assignment or final disposition. Outcome is calculated 45 days prior to the date of report.

Source: SHINES

## **Outcome V: Number of Child Placement Services Cases**

Count of unique children who were involved in an open Foster Care or Adoption stage during the month. In placement services each child who is the principal (PC) is considered a case. The chart also reveals the average of the last four state fiscal years to provide the viewer with a prior glimpse of the trend in placement cases.

Source: SHINES

## **Outcome VI: Children in the Legal Custody of DFCS Under the Age of 18**

Count of unique children who were in the legal custody of DFCS (17 years of age and under) at some point during the month.

Source: SHINES

Outcome VI-A: Age Distribution of Children in Custody: Chart is a percentage of children in DFCS Custody by age group.

## **Outcome VII: Comparison of Foster Care Entries & Exits**

Number of children who have entered foster care and number of children who have exited foster care during the month. Total children at end of month show the number of children on the last day of the month.

Source: SHINES

## **Outcome VIII: Foster Care Re-entries**

Of all the children who entered foster care, the percentage that were discharged from a prior episode of foster care within 12 months of the current foster care placement. National Standard: less than or equal to 8.60%.

Source: SHINES

**PERMANENCY cont'd:** Children have permanency and stability in their living situations.

**Outcome IX: Foster Care Length of Stay**

Percentage of children by number of months in foster care during each month.

Source: SHINES

**Outcome X: Length of Time to Achieve Reunification**

Percentage of children who exited care during the month through reunification with their family that reunified in less than 12 months from the date of their removal. National Standard: greater than or equal to 76.20%

Source: SHINES

**Outcome XI: Children Placed with Relatives**

Of all children in DFCS custody, the percentage that are placed with a relative or a relative foster home.

State Target: greater than or equal to 30.00%

Source: SHINES

**Outcome XII: Extended Youth Services**

Number of children ages 18 – 21 who remained in the custody of DFCS beyond their birth month.

Source: SHINES

**Outcome XIII: Monthly Discharges**

The number of children who were discharged during the month by permanency decision divided into two charts by positive permanency vs other types.

Source: SHINES

**Outcome XIII - A: Average Number of Months to Achieve Positive Permanency**

Of all children in Outcome XIII, the number of months from removal (entry into foster care) until exit due to reunification, relative, adoption or guardianship..

Source: SHINES

**PERMANENCY cont'd:** Children have permanency and stability in their living situations.

**Outcome XIV: Placement Stability Performance (Number of Moves/Number of Days in Custody \* 1000)**

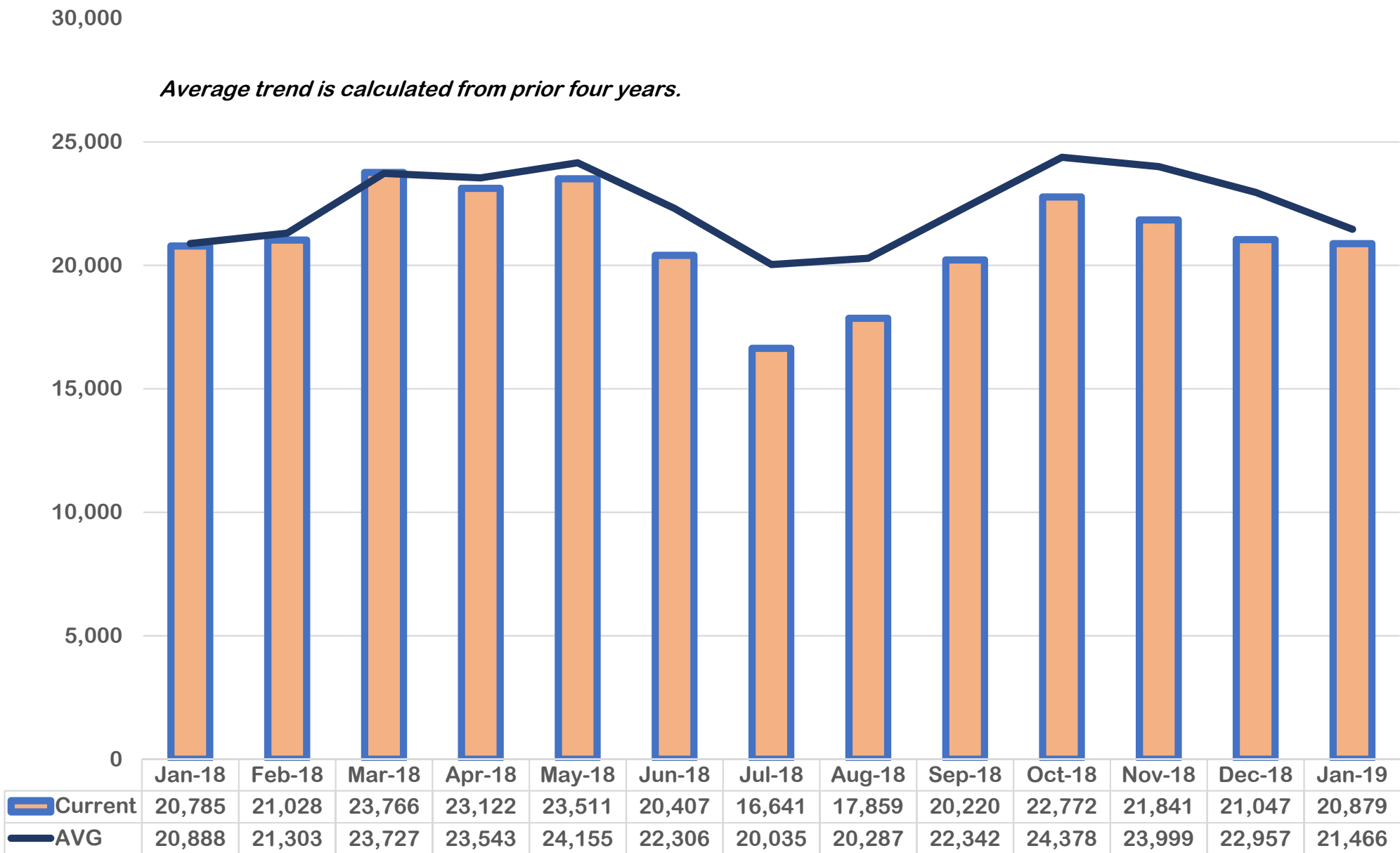
A calculated value based upon the ACF CFSS Round 3 which is part of Program Improvement. It is calculated from a rolling 12 month population of the entry cohort where the child remained in custody for over 8 days and was not 18 on the date of removal. The federal standard is 4.12.

Source: SHINES

*\*\*Note: Data may vary from month to month due to 13 month data trends being re-run over the time span for the various outcomes in this report.*

# DIVISION OF FAMILY & CHILDREN SERVICES

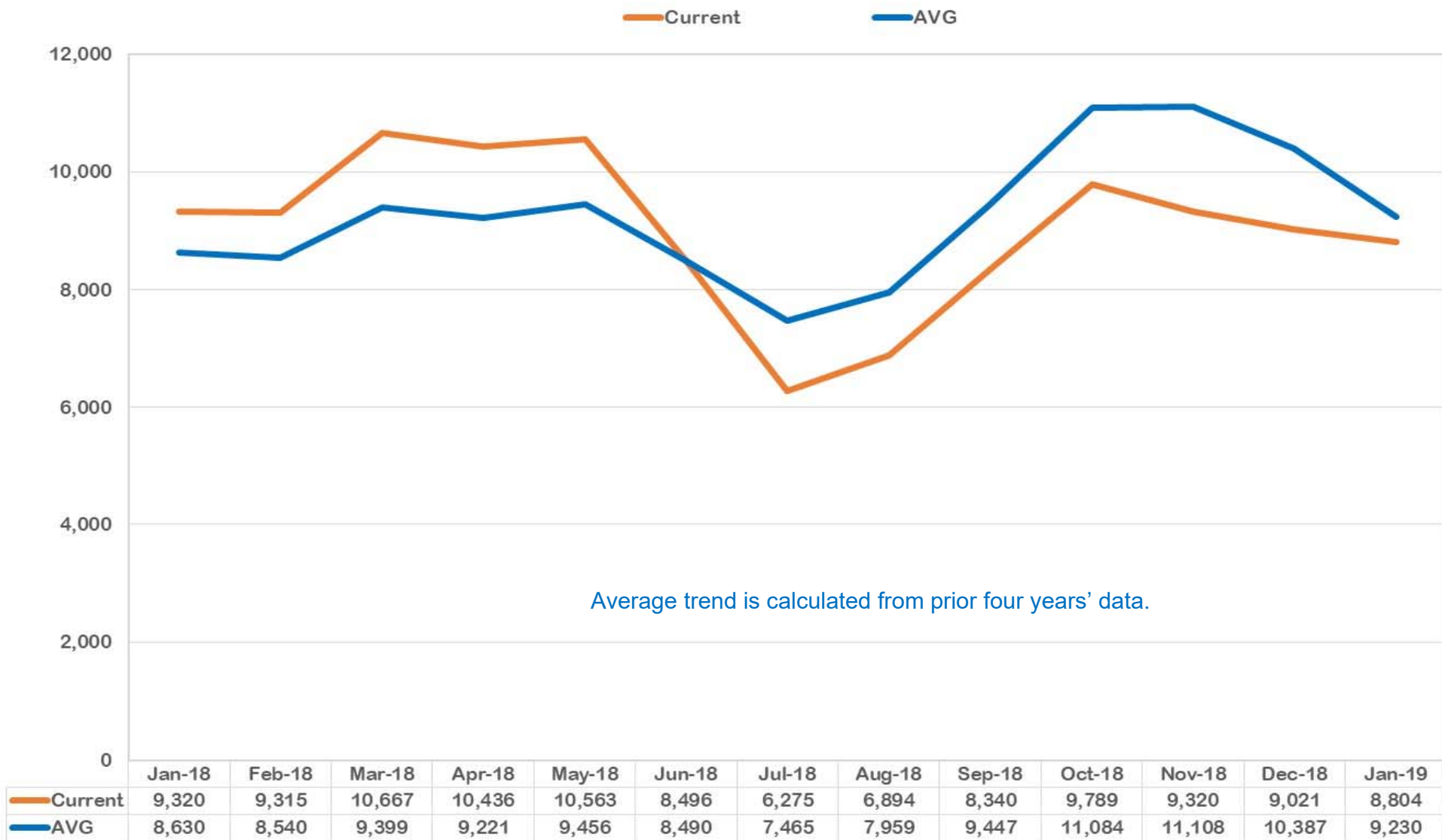
How many CPS Cases were open monthly during the last 13 months?



Outcome I: Child Protective Services Cases (January 2018 – January 2019)

# DIVISION OF FAMILY & CHILDREN SERVICES

## How many Family Support Cases were open per month for the last 13 months?



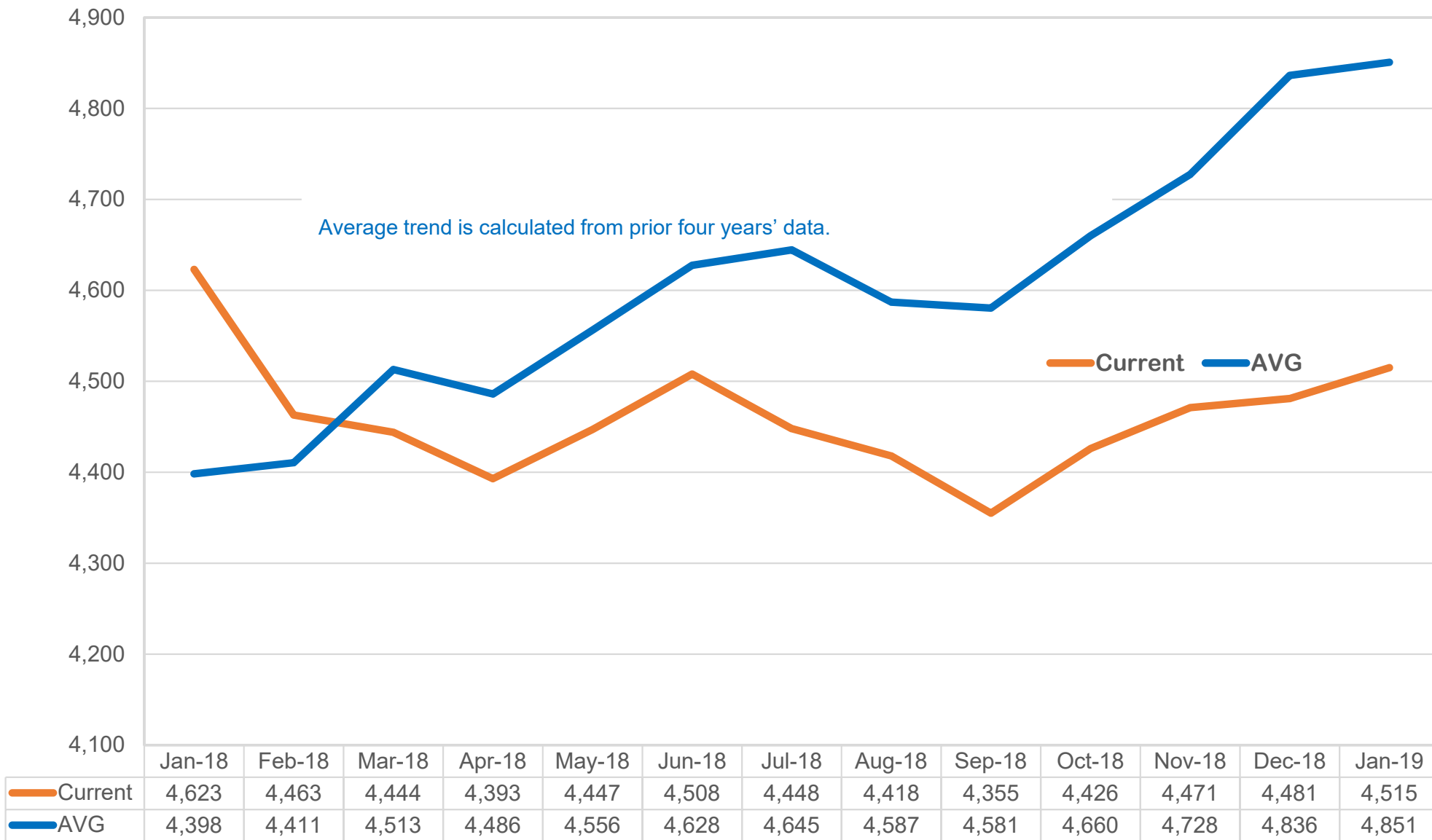
The graph above reveals a similar trend in the last 13-months compared to the average trend. During July 2018, there is a 16% decline in the number of cases when compared to average trend. This was a 26% drop from the prior month of June 2018. The trend in January 2019 continued to decrease since October 2018 by 10%. The current trend is 4.6 % less than the average trend for January.

**Outcome IA: Child Protective Services Cases Family Support Cases Only (January 2018 – January 2019)**



# DIVISION OF FAMILY & CHILDREN SERVICES

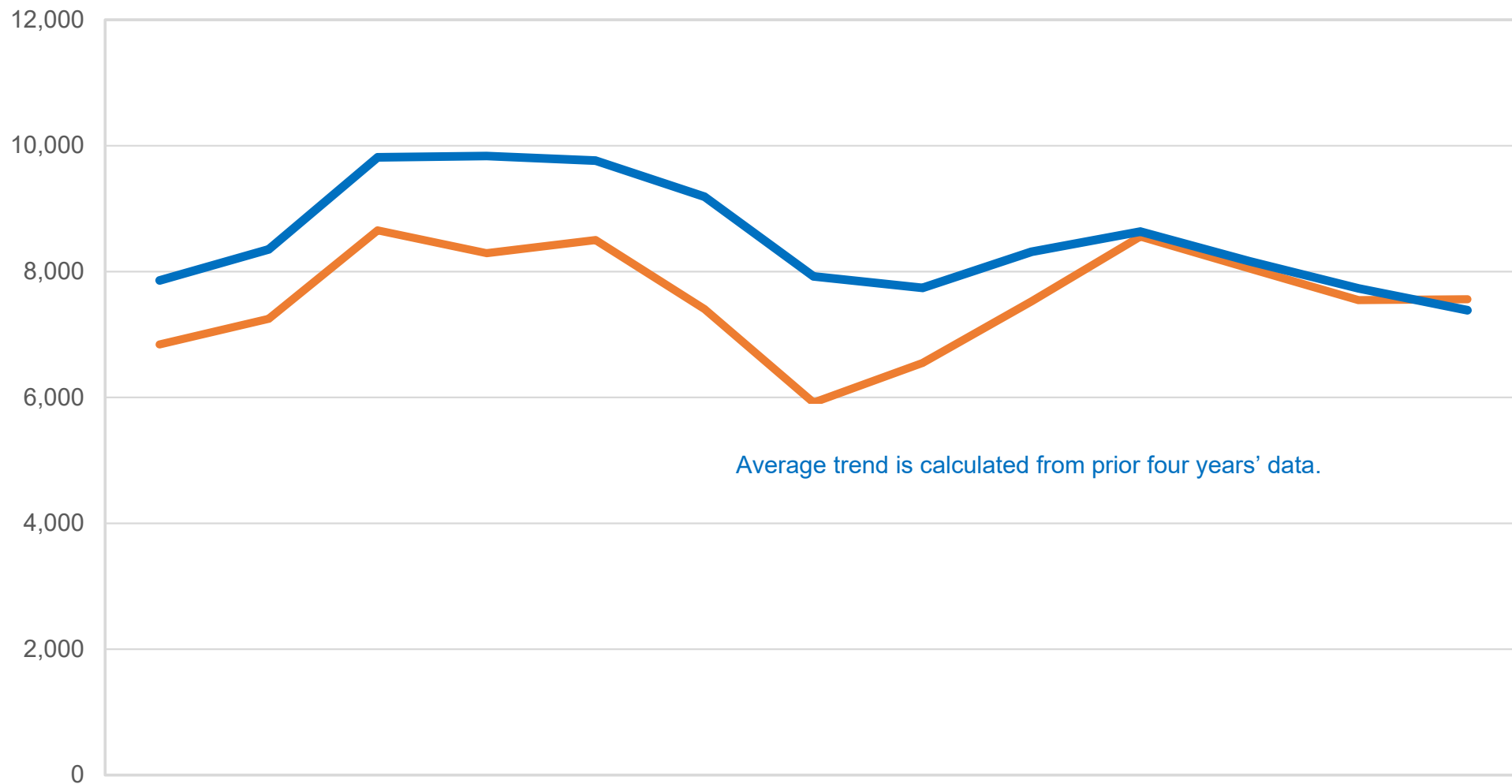
## How many Family Preservation Cases were open per month during for the last 13 months?



The average trend is higher than the current trend since March 2018. While there is a 4% increase in cases since September 2018; in January 2019 Family Preservation cases were 7% lower than the average trend.

# DIVISION OF FAMILY & CHILDREN SERVICES

## How many Investigation Cases were open per month for the past 13 months?



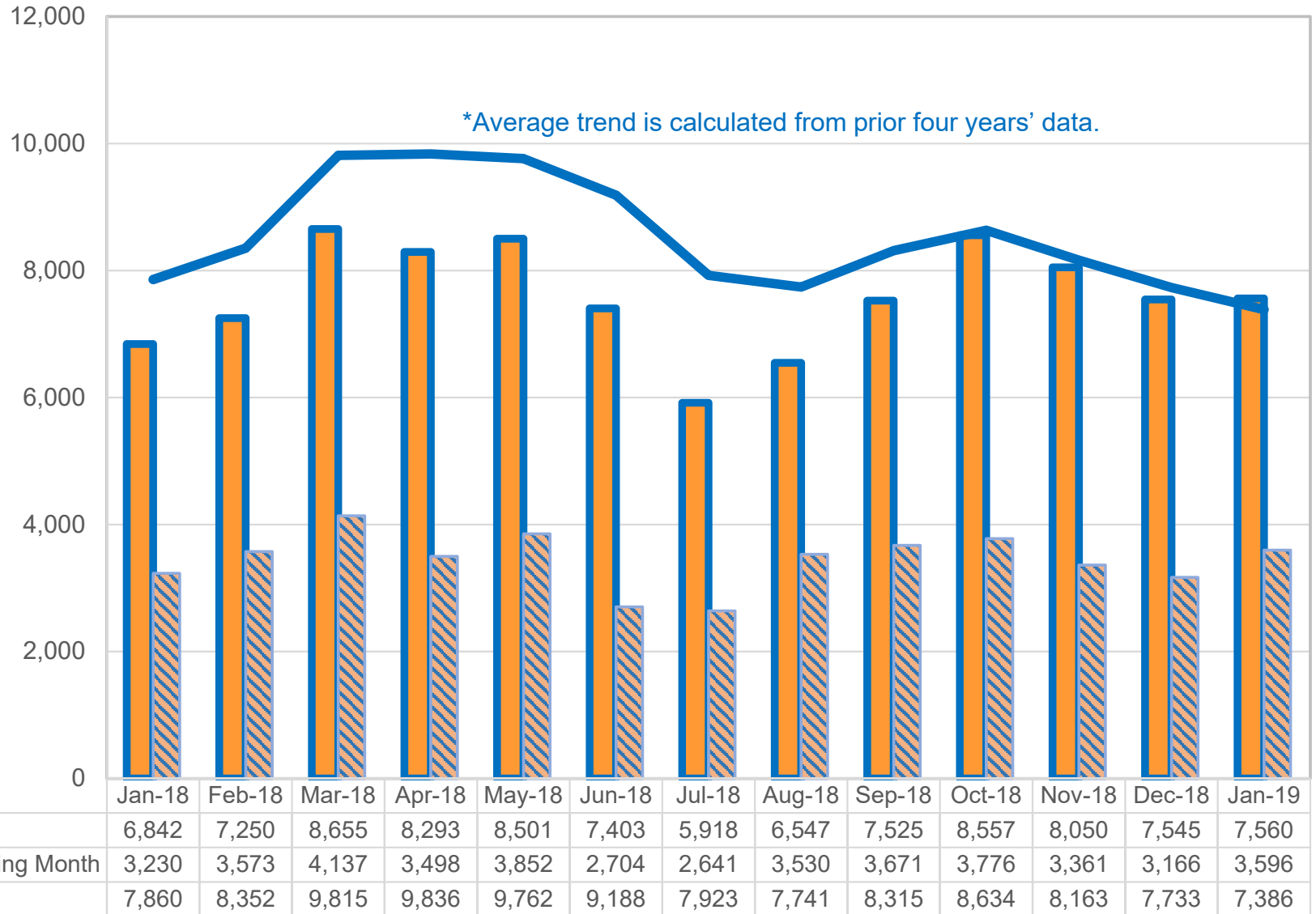
	Jan-18	Feb-18	Mar-18	Apr-18	May-18	Jun-18	Jul-18	Aug-18	Sep-18	Oct-18	Nov-18	Dec-18	Jan-19
Current	6,842	7,250	8,655	8,293	8,501	7,403	5,918	6,547	7,525	8,557	8,050	7,545	7,560
Avg	7,860	8,352	9,815	9,836	9,762	9,188	7,923	7,741	8,315	8,634	8,163	7,733	7,386

Although the last 13 months have seen an increase in investigations of over 15% since the prior 13 months (not pictured), the current year's total investigations reveals an improvement in investigations when compared to each monthly averages of the average trend with the exception of January 2019 which saw an increase of over 2% over the average.

**Outcome IC: Child Protective Services Cases Investigation Cases Only (January 2018 – January 2019)**

# DIVISION OF FAMILY & CHILDREN SERVICES

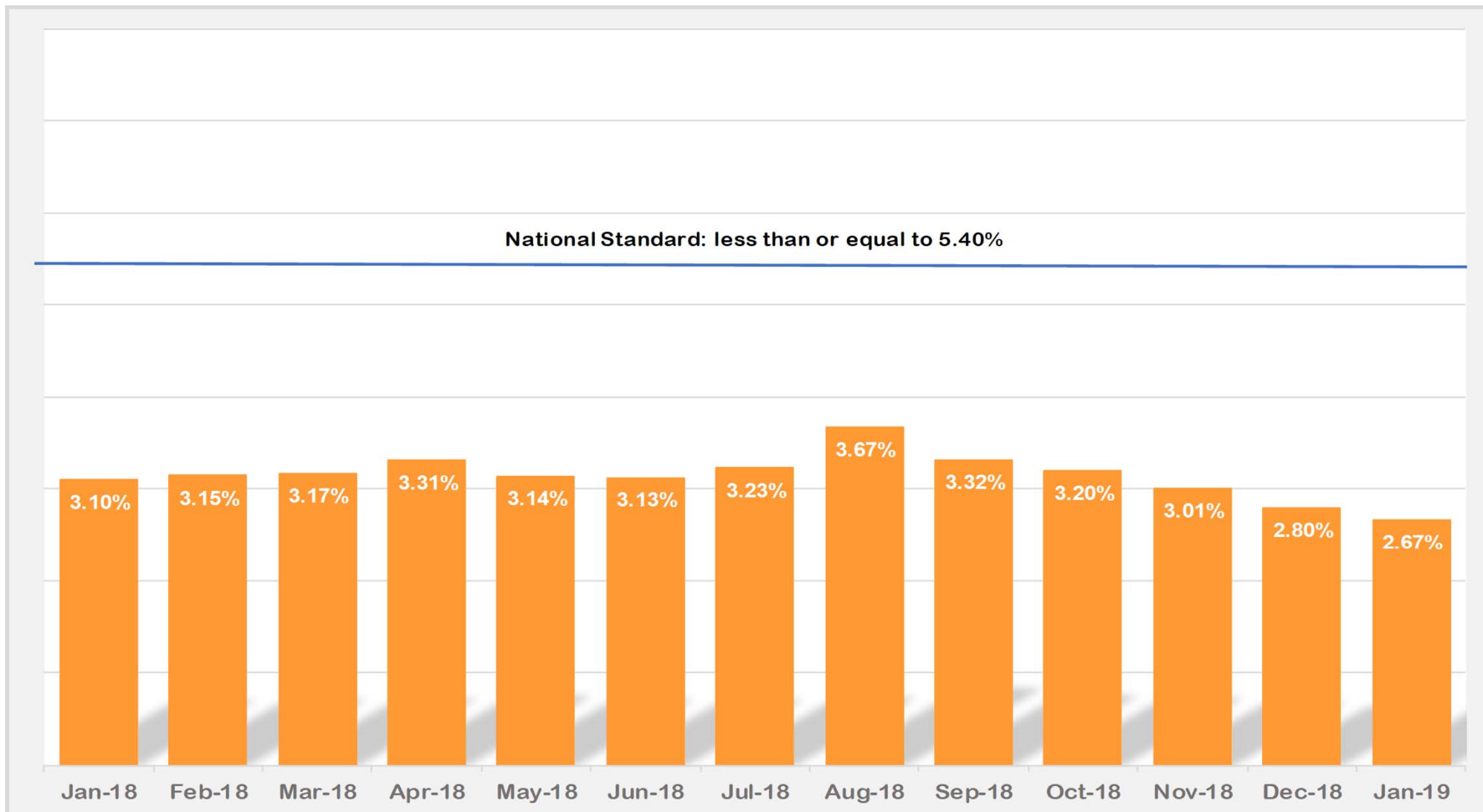
How many Investigation Cases were open at any time during the month Vs Investigation Cases that were initiated during the month for the past 13 months?



This chart indicates that during each month, the cases that are opened during the month are less than half of the overall open cases during the month. Additionally, the increases and decreases in those opened during the month resemble the trend in the current cases open during the month through December 2018.

Outcome IC\_1: Child Protective Services Cases Investigation Cases Only (January 2018 – January 2019)

What percentage of children had a subsequent substantiated incident of maltreatment within 6 months?



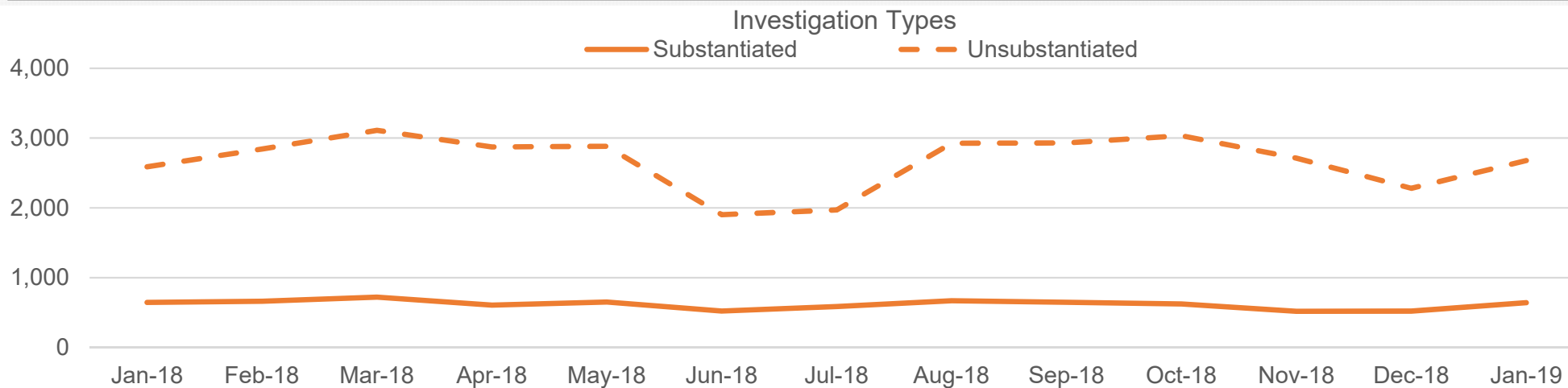
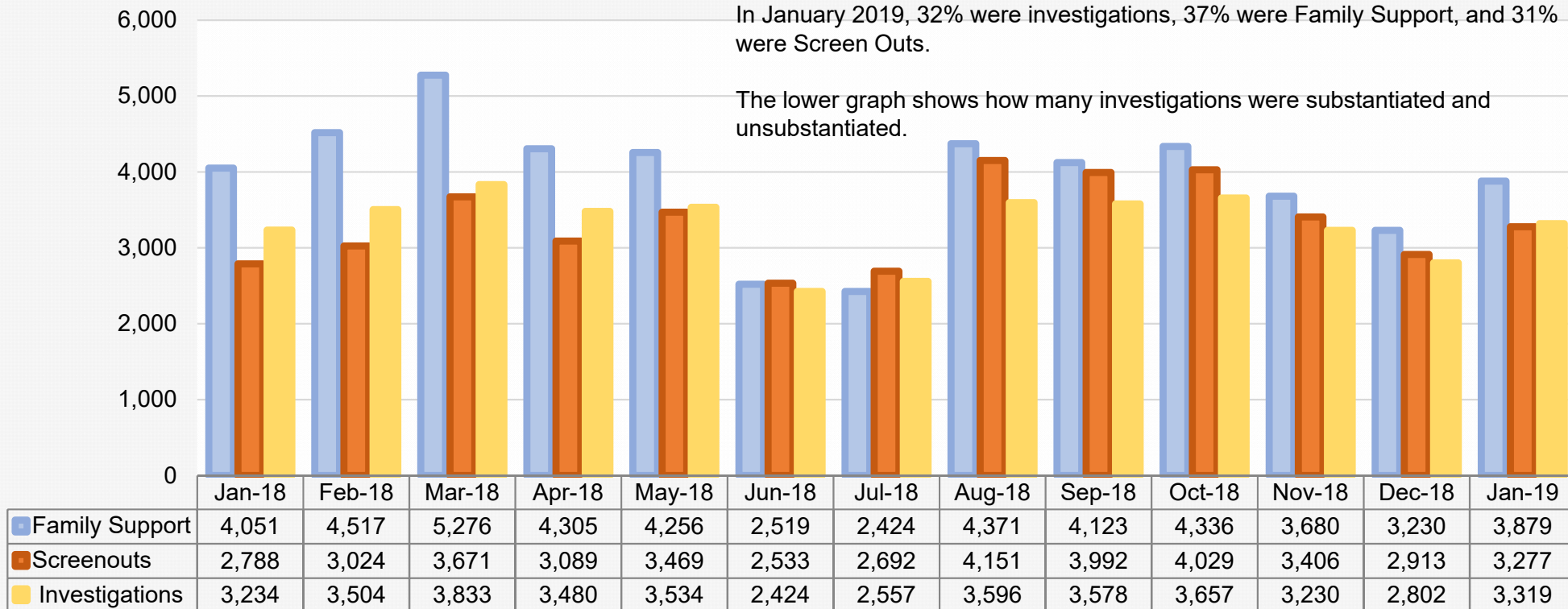
The trend reveals that Georgia has consistently maintained a low recurrence rate below the national standard of 5.4%. However, increases can be seen from January 2018 – April 2018 followed by a subsequent higher rate occurring in August 2018. Georgia has a lower percentage of maltreatment in January 2019 as compared to January 2018.

# DIVISION OF FAMILY & CHILDREN SERVICES

## What was the disposition of all CPS reports received during the month ?

This chart reveals the disposition of CPS reports that were received for service. In January 2019, 32% were investigations, 37% were Family Support, and 31% were Screen Outs.

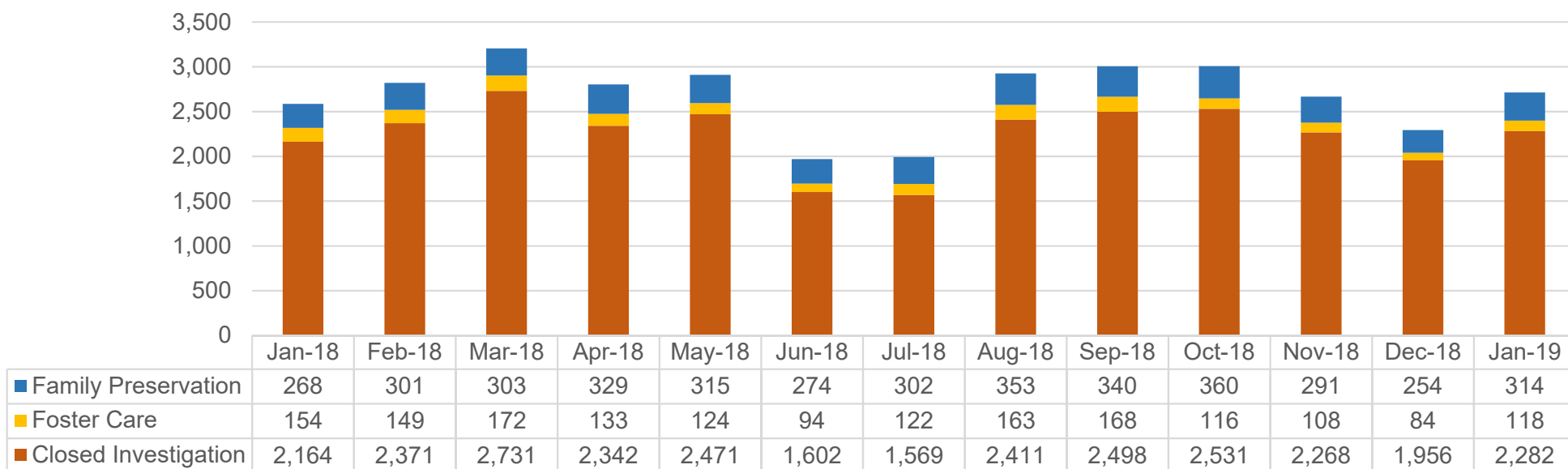
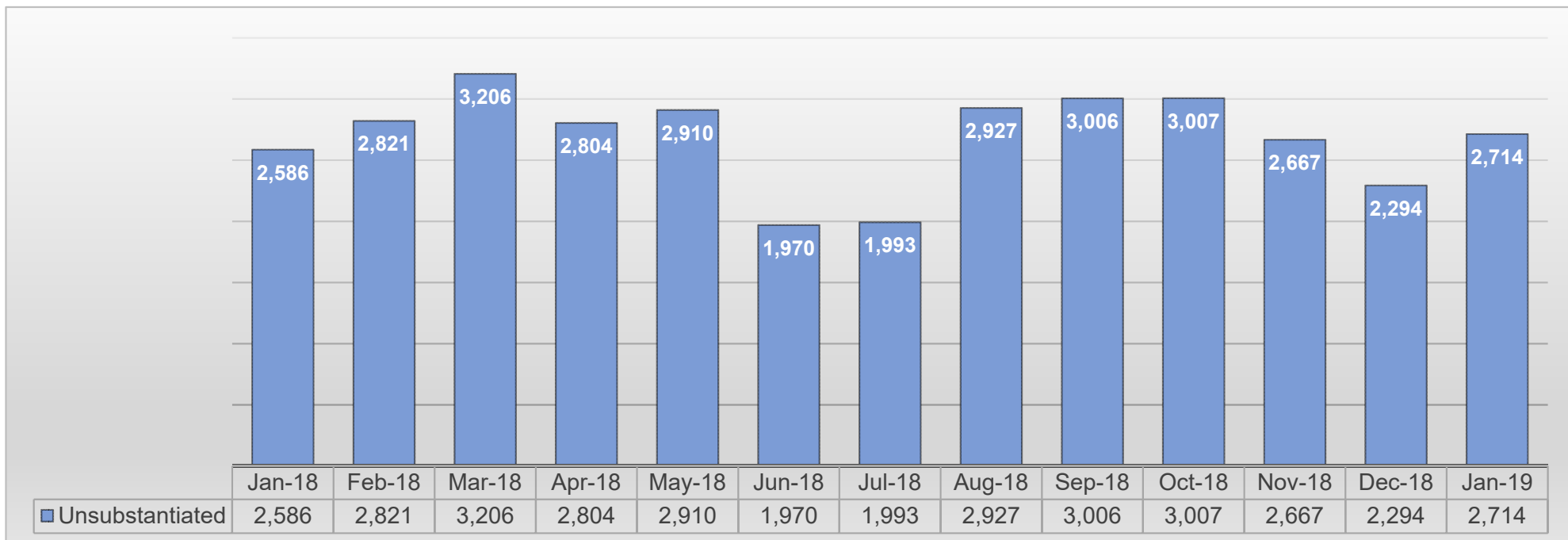
The lower graph shows how many investigations were substantiated and unsubstantiated.



What was the final disposition of closed investigations during the month?

# DIVISION OF FAMILY & CHILDREN SERVICES

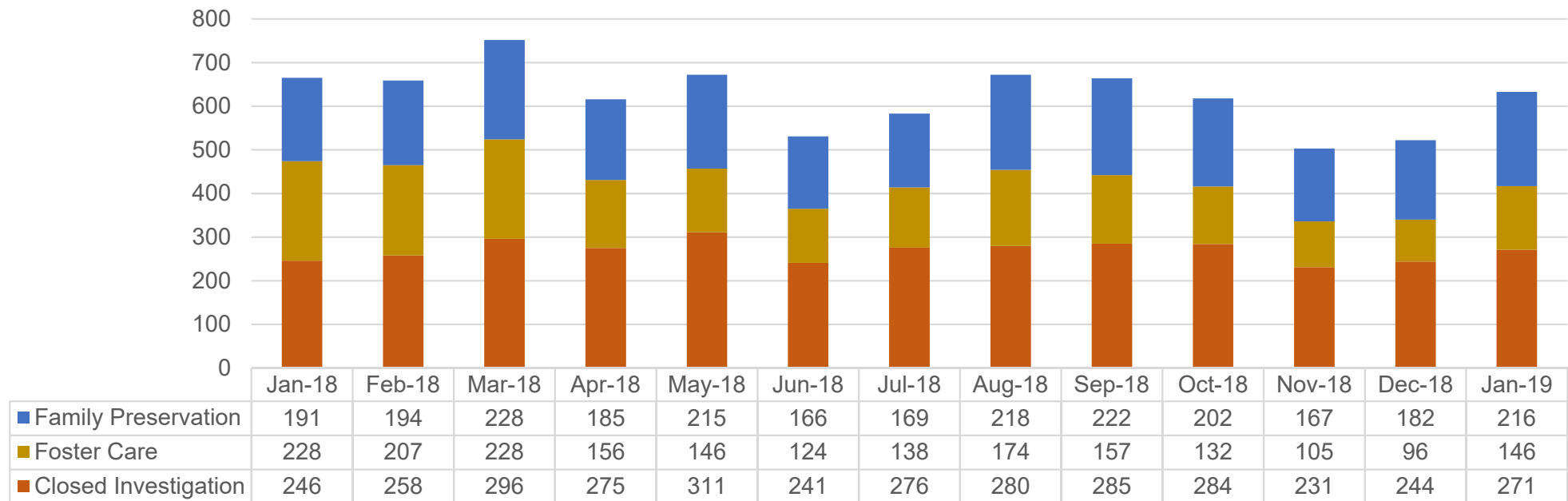
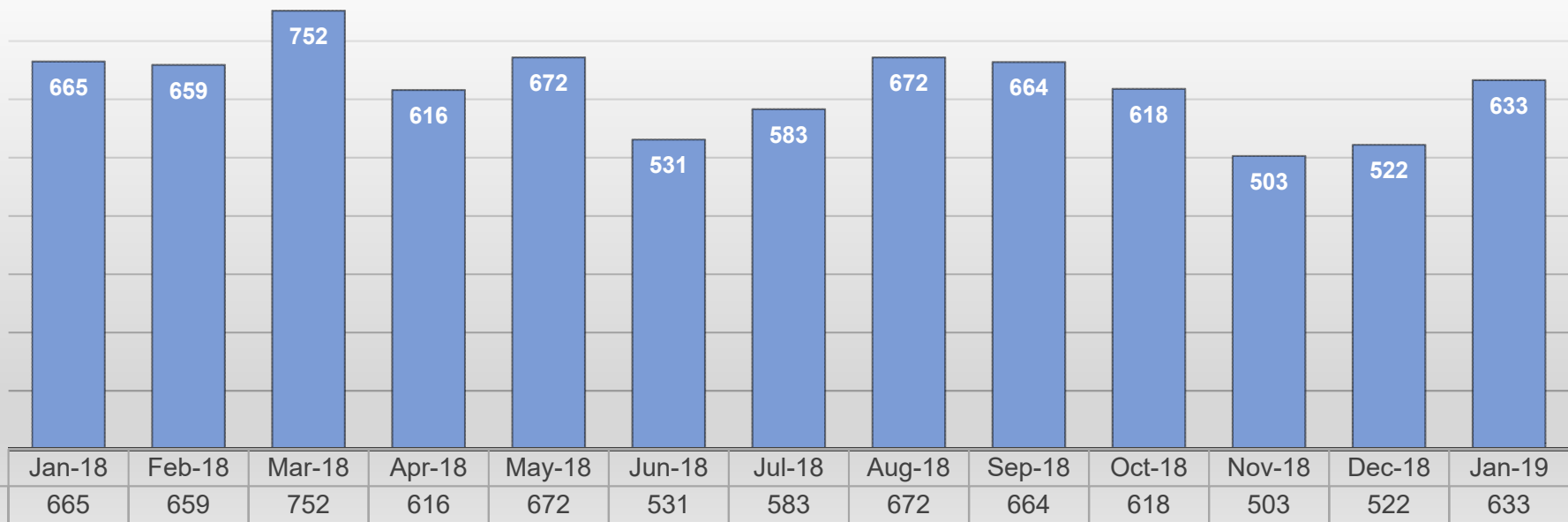
## Unsubstantiated



Outcome IV: Subsequent Case-Types of Investigations (January 2018 – January 2019)

# DIVISION OF FAMILY & CHILDREN SERVICES

## Substantiated:



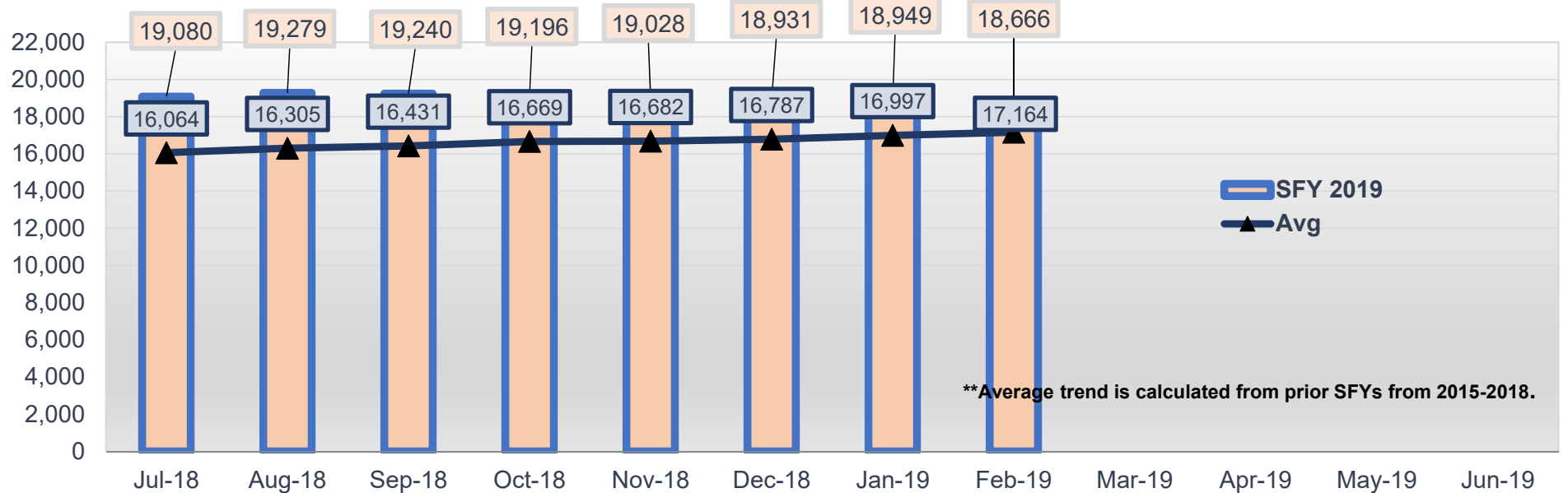
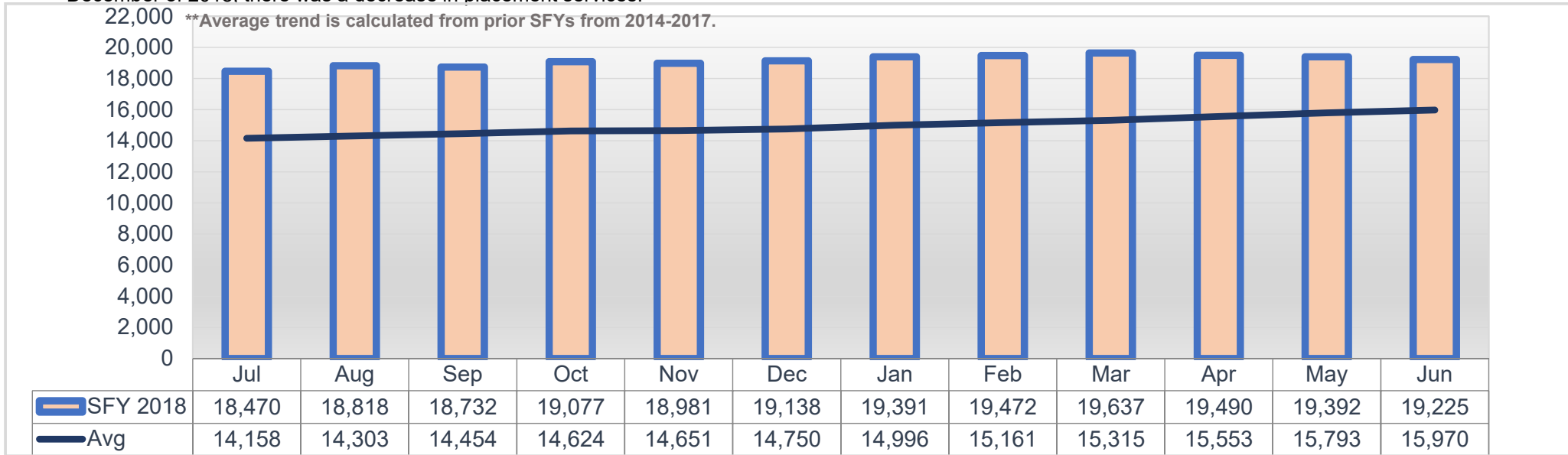
Outcome IV: Subsequent Case-Types of Investigations (January 2018 – January 2019)



# DIVISION OF FAMILY & CHILDREN SERVICES

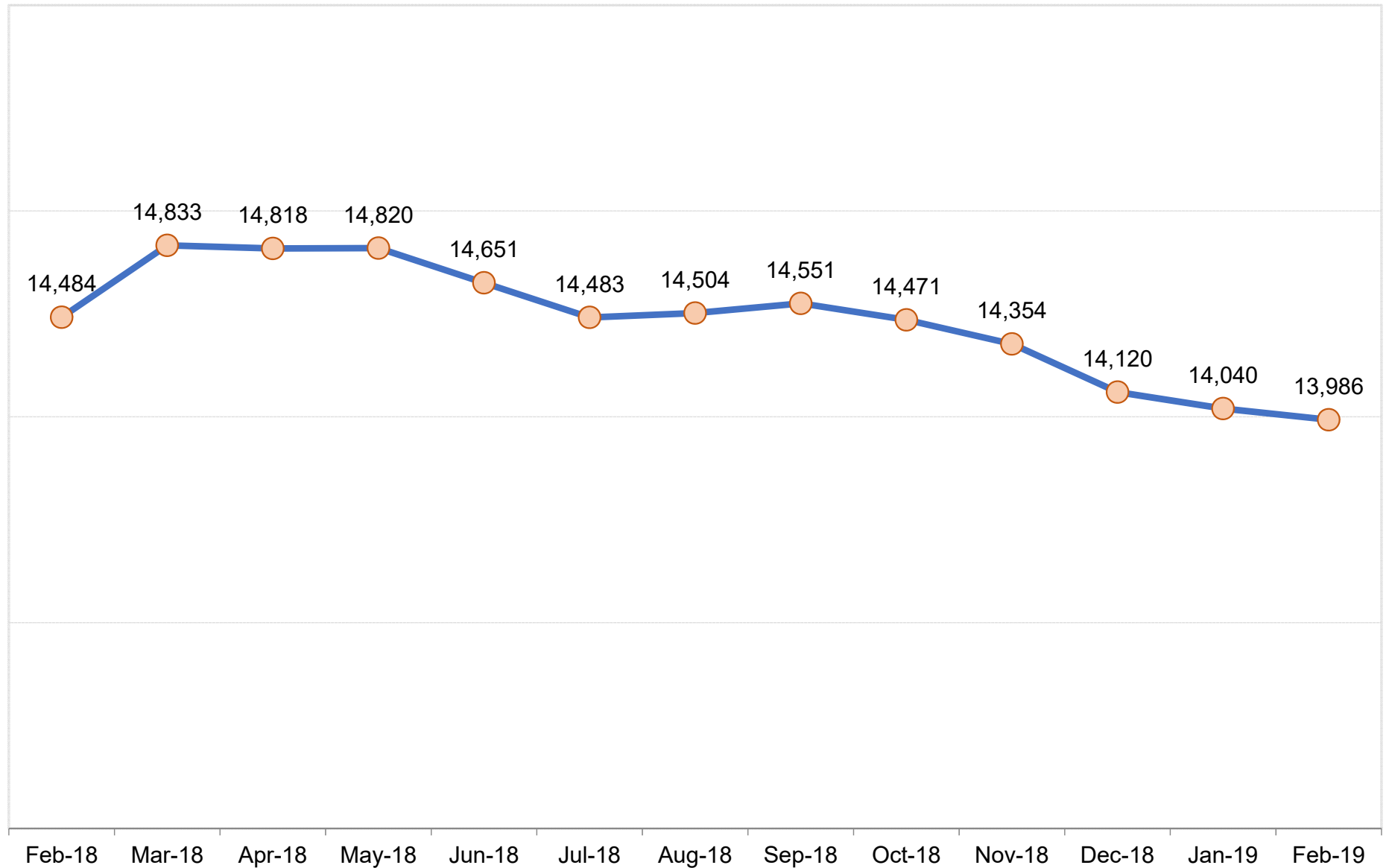
## How many children were involved placement services for each month during the State Fiscal Year?

The average trend for the past four years shows a gradual increase (low slope) in cases. The placement services include continued collaboration with families after out of home care may have ended as well as those who are in out of home care with DFCS Age 0 - 21. For 4 months of the SFY 2019 from September – December of 2018, there was a decrease in placement services.



*Outcome V: Number of Children in Placement Services (State Fiscal Year 2019 To Date)*

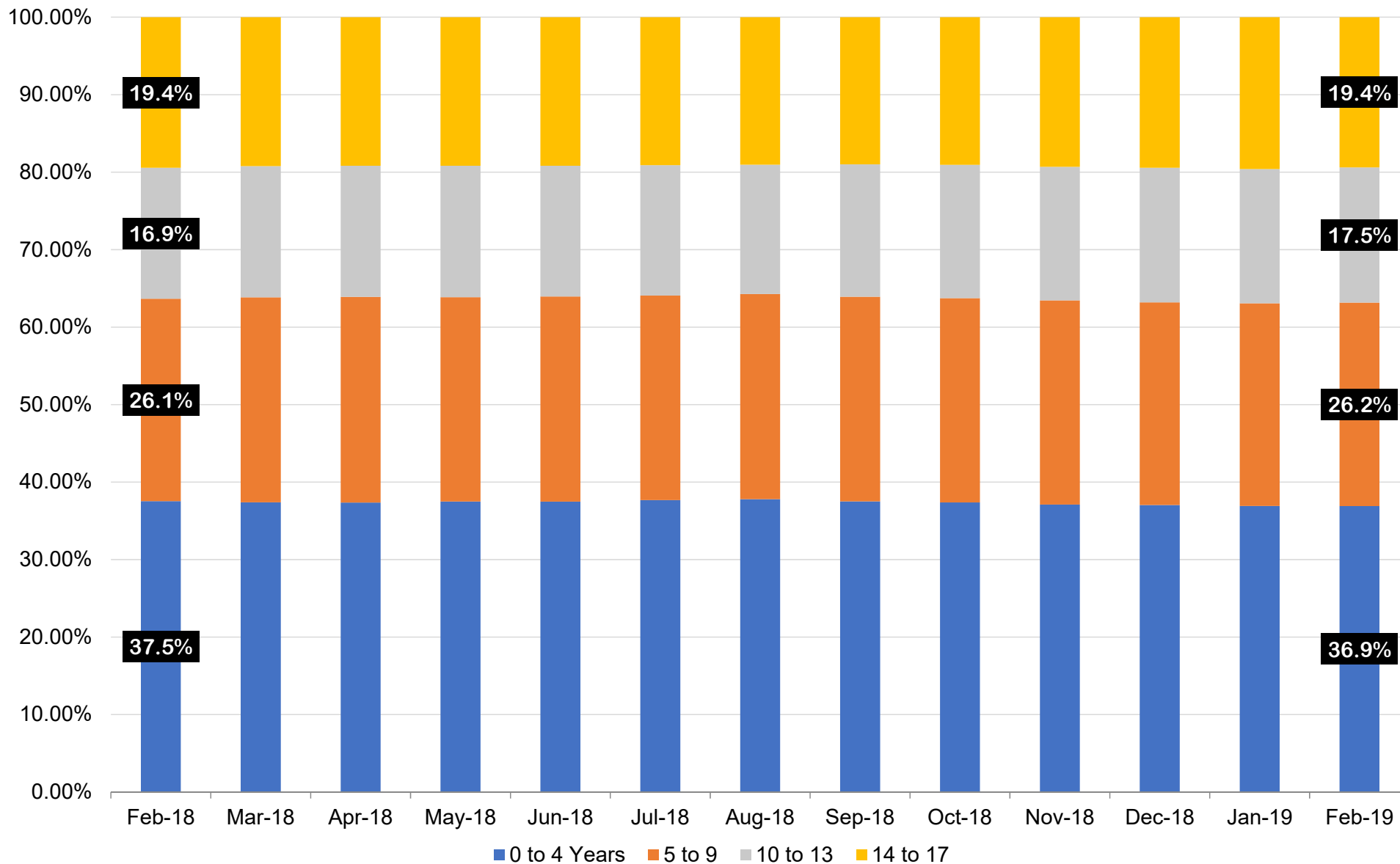
How many children were in Foster Care under the age of 18?



Outcome VI: Children in DFCS Custody Under the Age of 18 (February 2018 – February 2019)

# DIVISION OF FAMILY & CHILDREN SERVICES

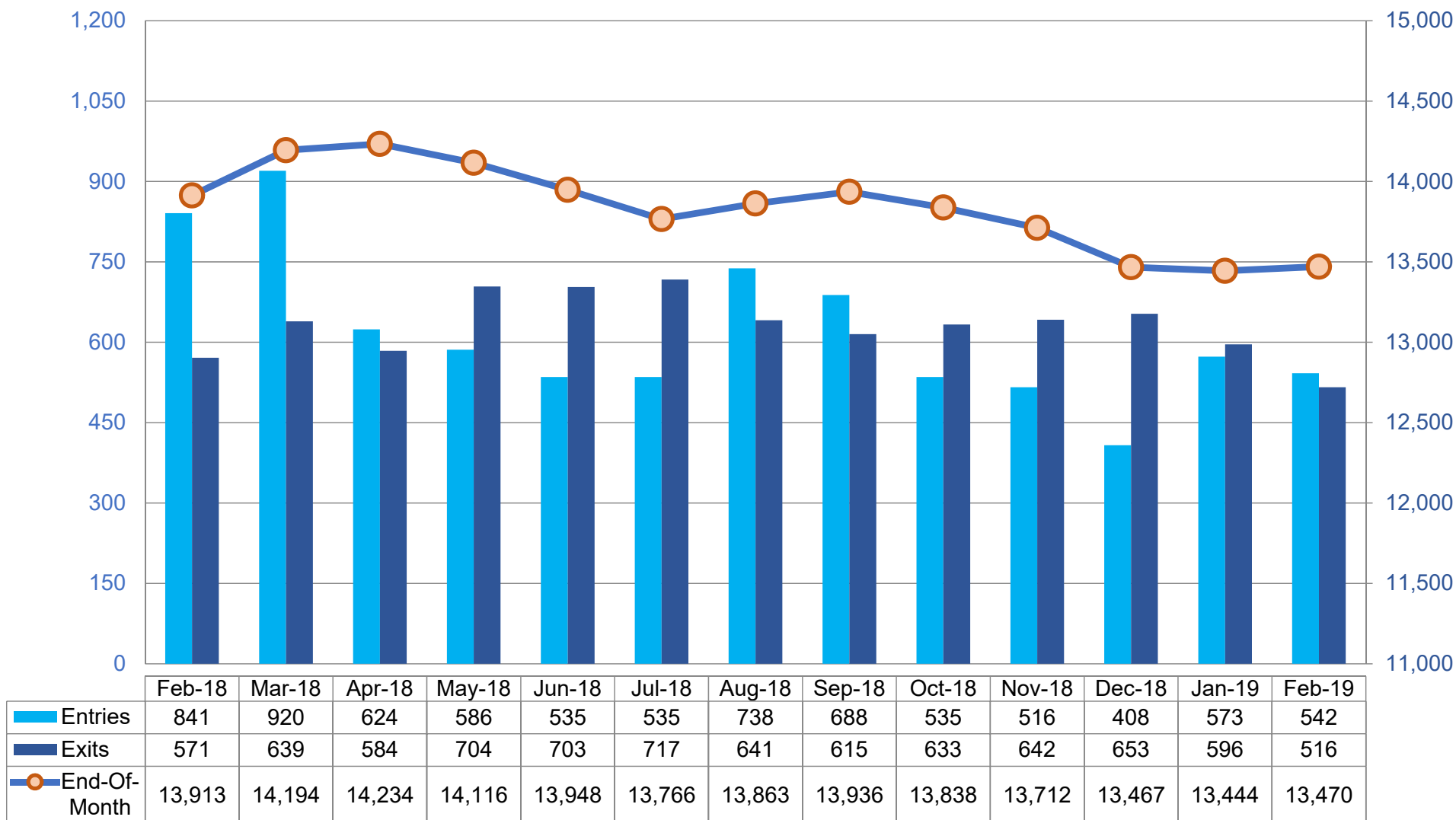
## Has the age distribution of the foster population changed much over the last year?



Outcome VI-A: Children in DFCS Custody Under the Age of 18 by Age Group ( February 2018 – February 2019)

# DIVISION OF FAMILY & CHILDREN SERVICES

How many children are moving in and out of Foster Care? How many remain in care on the last day?

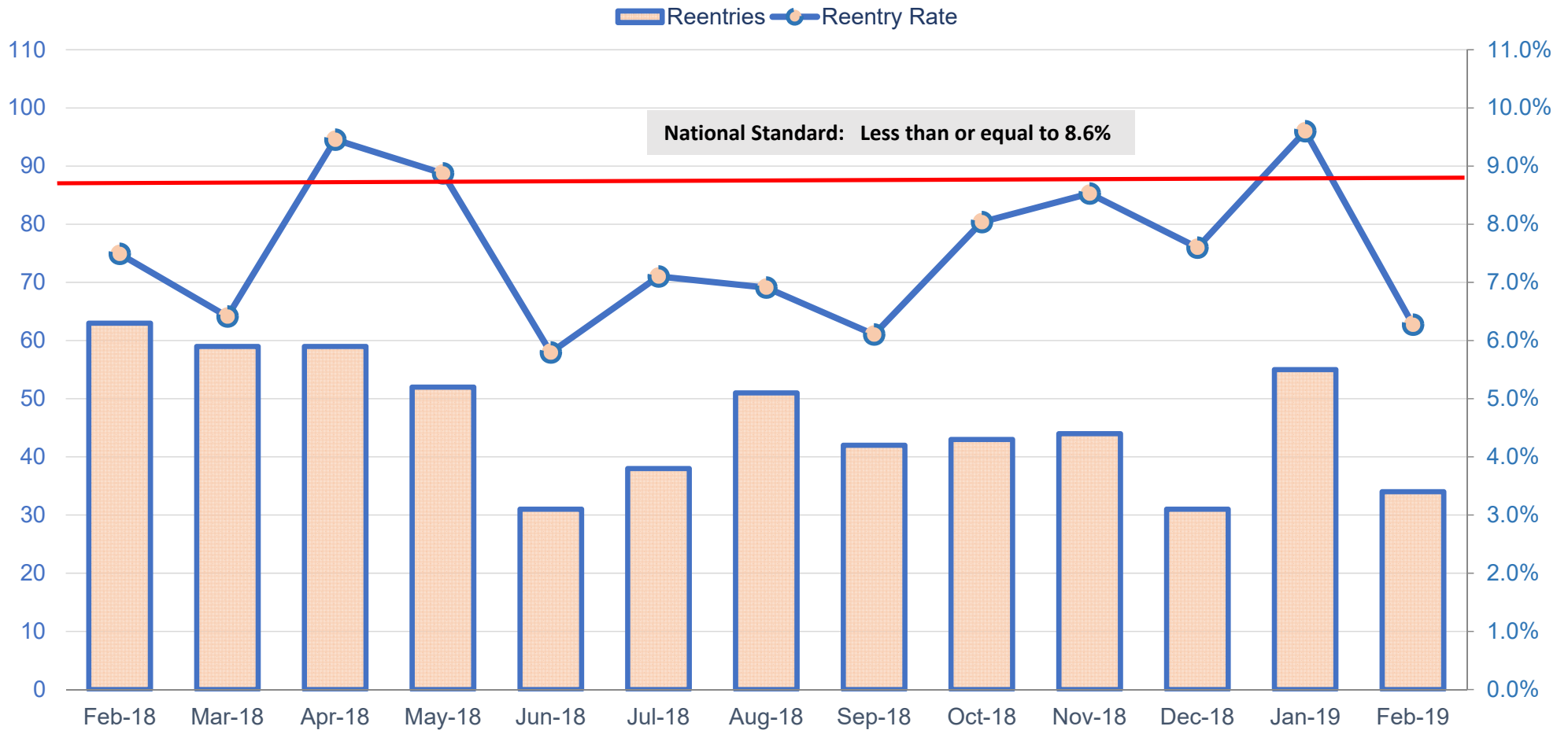


*Outcome VII: Comparison of Foster Care Entries and Exits (February 2018 – February 2019)*

\*\*Reentries that occur within the same month are not double counted in the entries and exits on this chart. This chart represents unique population and movement into custody during the month.

# DIVISION OF FAMILY & CHILDREN SERVICES

How many children were in a prior episode within twelve months of the current episode?

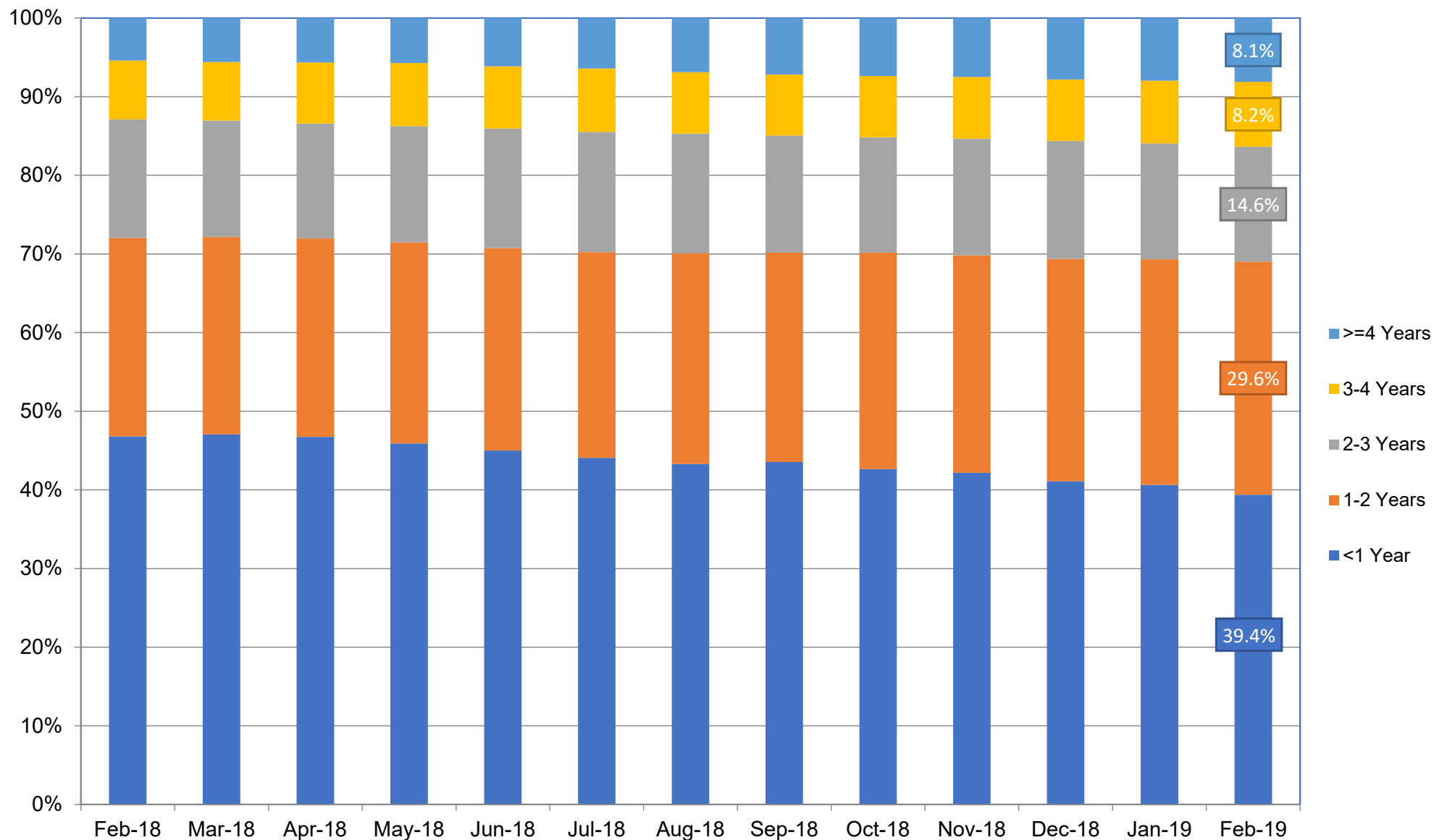


Feb-18	Mar-18	Apr-18	May-18	Jun-18	Jul-18	Aug-18	Sep-18	Oct-18	Nov-18	Dec-18	Jan-19	Feb-19
63	59	59	52	31	38	51	42	43	44	31	55	34
7.5%	6.4%	9.5%	8.9%	5.8%	7.1%	6.9%	6.1%	8.0%	8.5%	7.6%	9.6%	6.3%

*Outcome VIII: Foster Care Re-Entries (February 2018 – February 2019)*

# DIVISION OF FAMILY & CHILDREN SERVICES

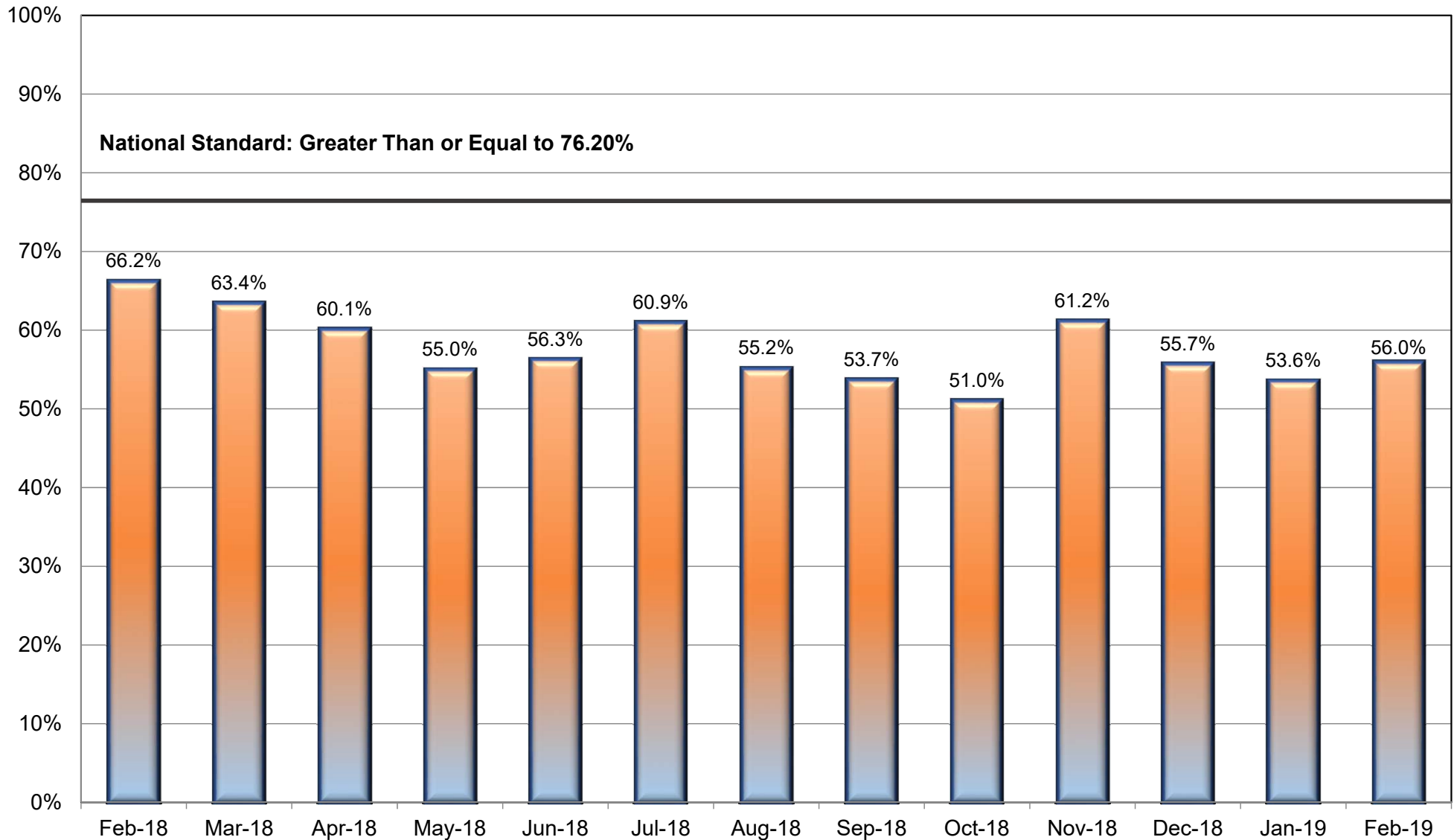
What percentage of foster children have been in care for less than a year, less than 2 years . . . each month?



Outcome IX: Foster Care Length of Stay (February 2018 – February 2019)

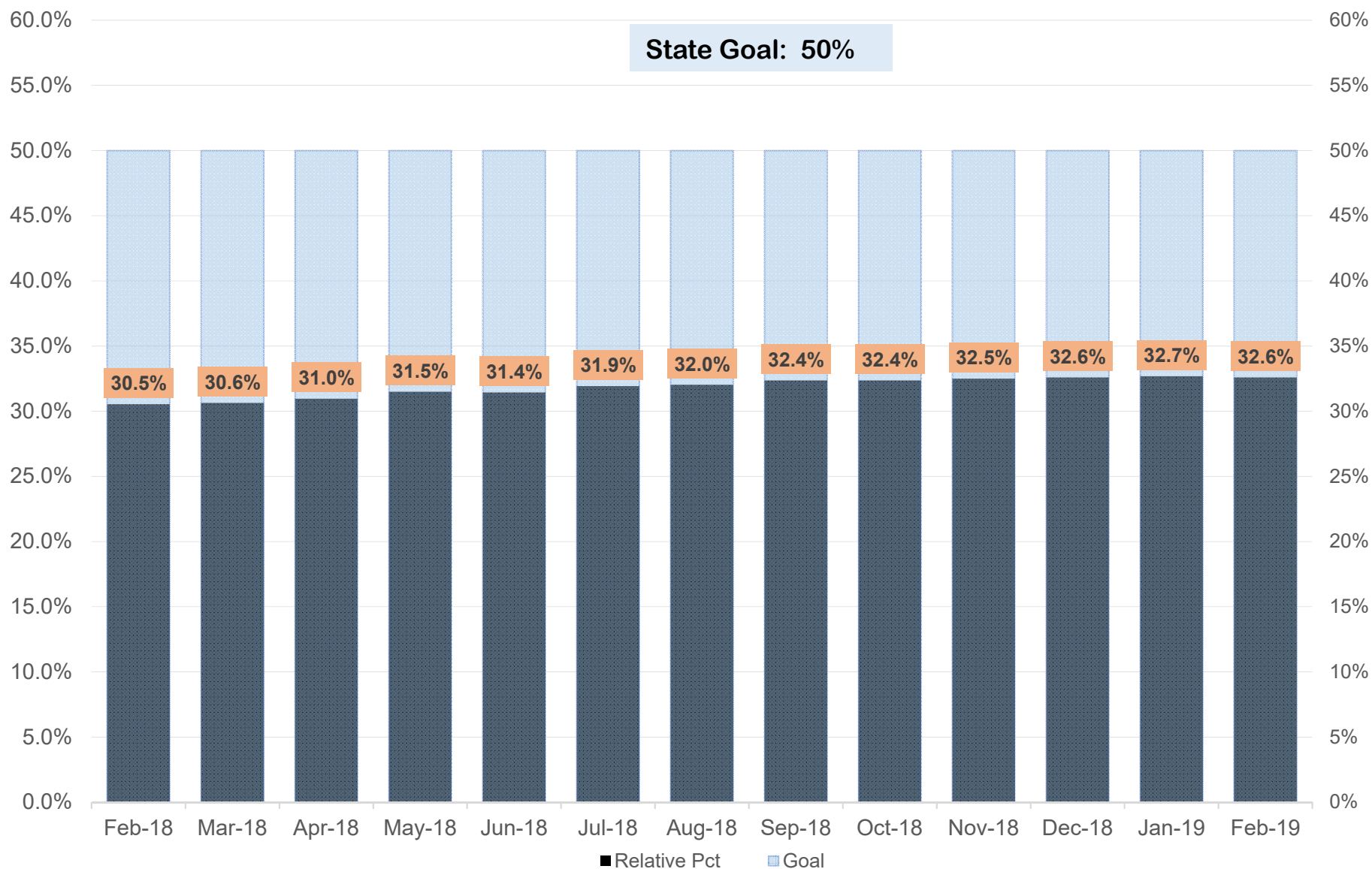
# DIVISION OF FAMILY & CHILDREN SERVICES

What percentage of reunifications occurred within twelve (12) months of the child entering foster care?



*Outcome X: Length of Time to Reunification (February 2018 – February 2019)*

What percentage of children in Foster Care were placed with a relative during the month?

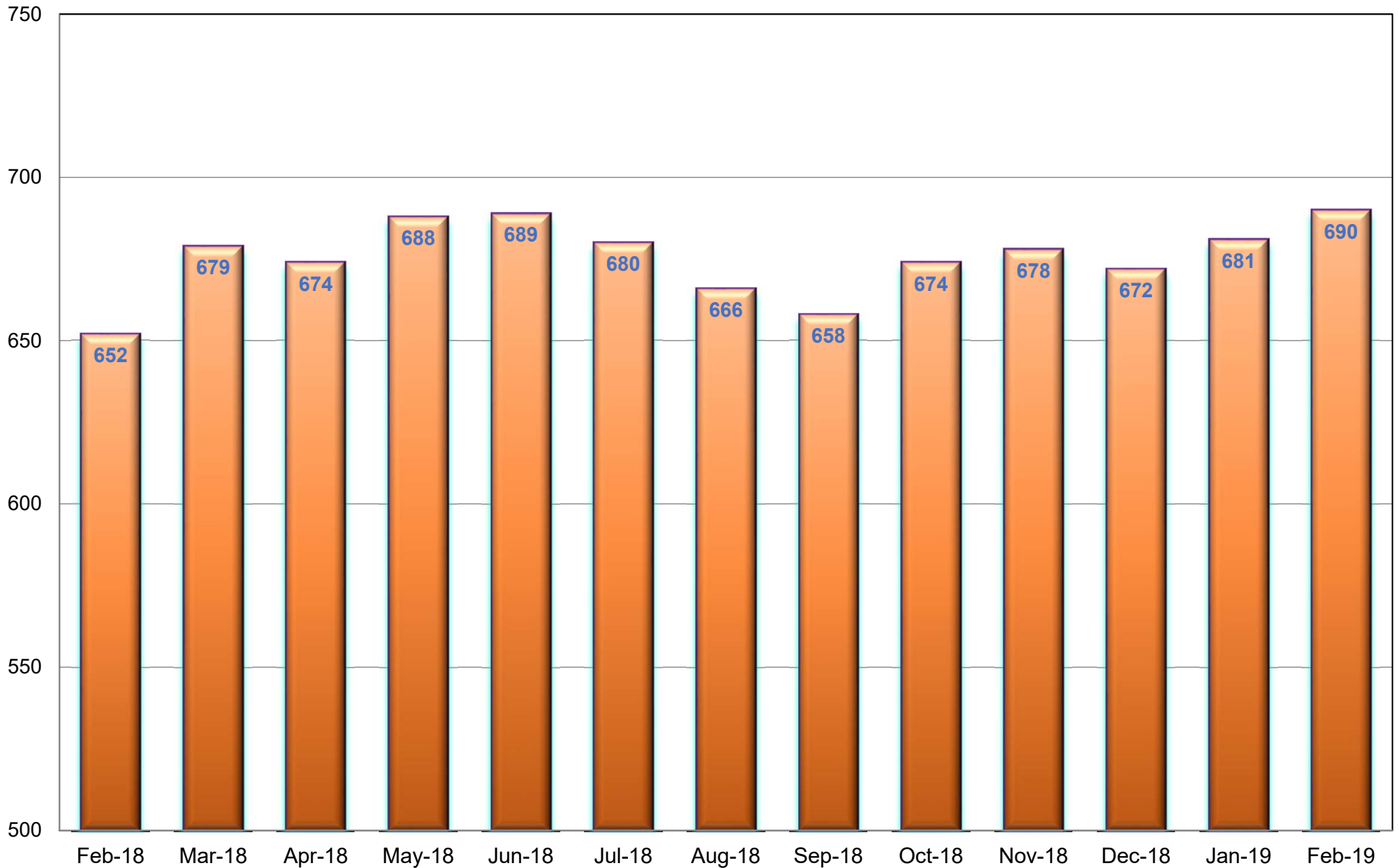


Outcome XI: Percent of Children Placed with Relatives (February 2018 – February 2019)



# DIVISION OF FAMILY & CHILDREN SERVICES

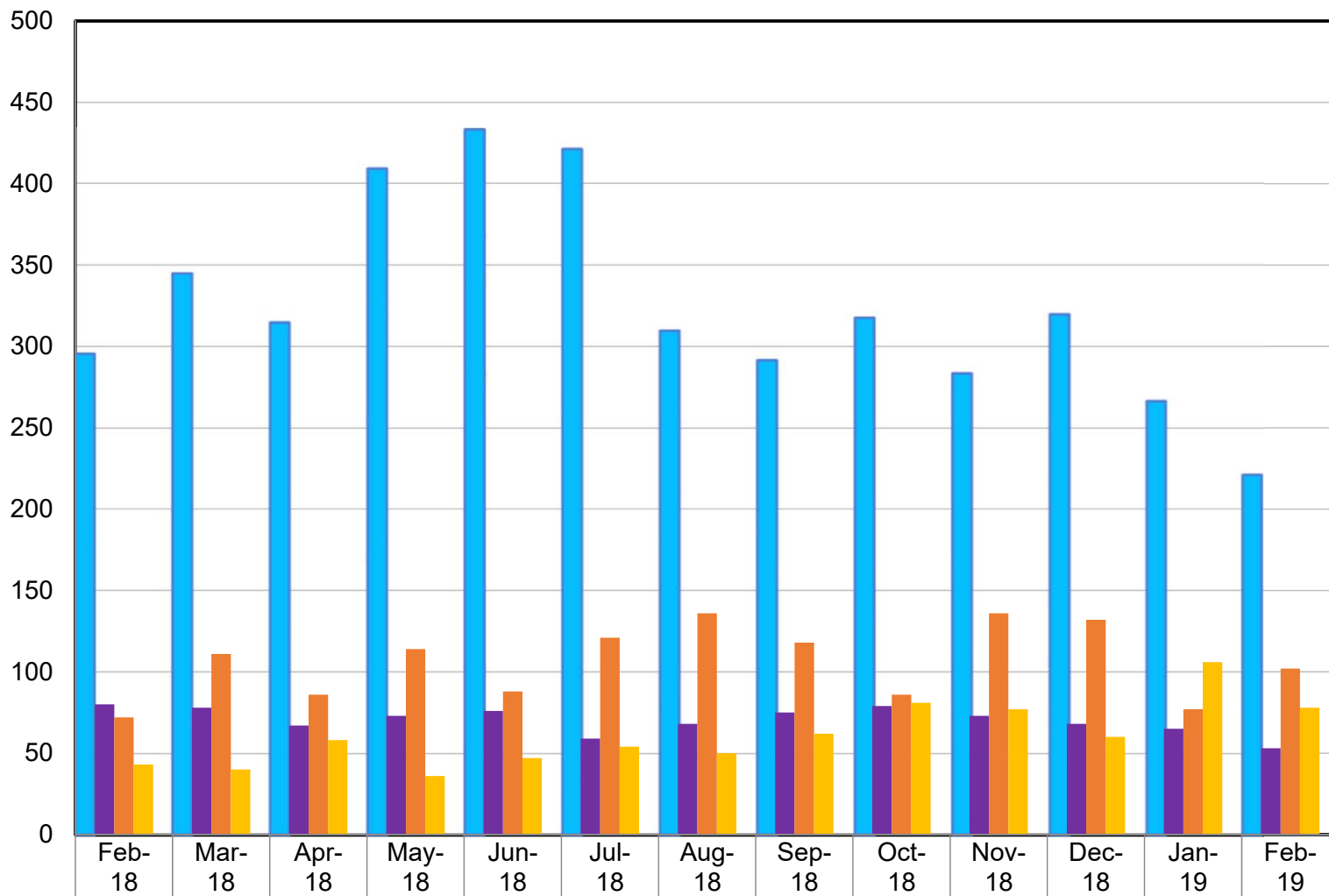
How many children remained in Foster Care after the age of 18?



*Outcome XII: Extended Youth Services (February 2018– February 2019)*

# DIVISION OF FAMILY & CHILDREN SERVICES

How many children in Foster Care were discharged to a positive permanency during the month?

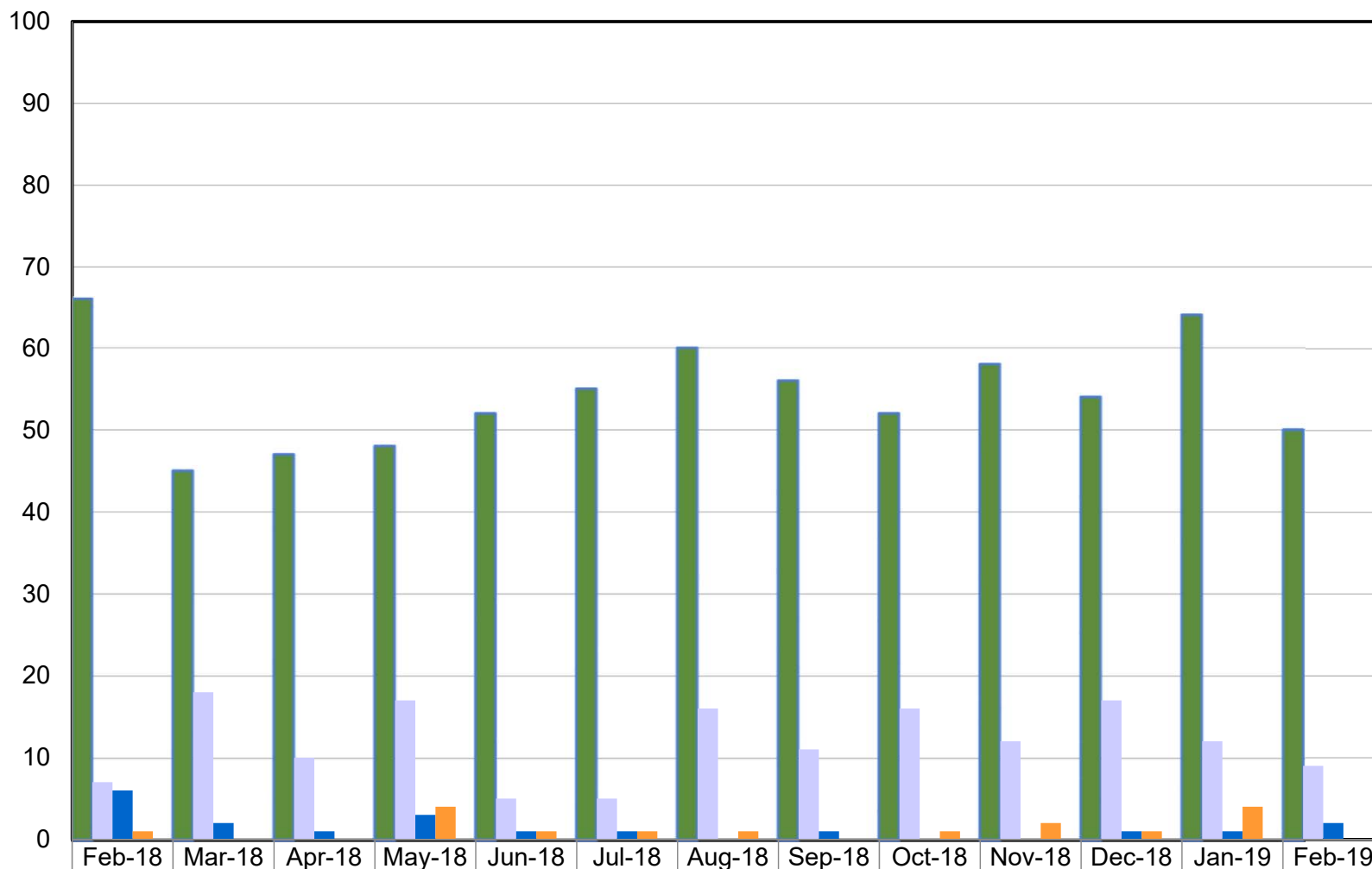


■ Reunification	296	345	315	409	433	421	310	292	318	284	320	267	222
■ Living With Other Relative(s)	80	78	67	73	76	59	68	75	79	73	68	65	53
■ Finalized Adoption	72	111	86	114	88	121	136	118	86	136	132	77	102
■ Guardianship	43	40	58	36	47	54	50	62	81	77	60	106	78
Positive Permanency	491	574	526	632	644	655	564	547	564	570	580	515	455

Outcome XIII: Number of Discharges (February 2018 – February 2019)

# DIVISION OF FAMILY & CHILDREN SERVICES

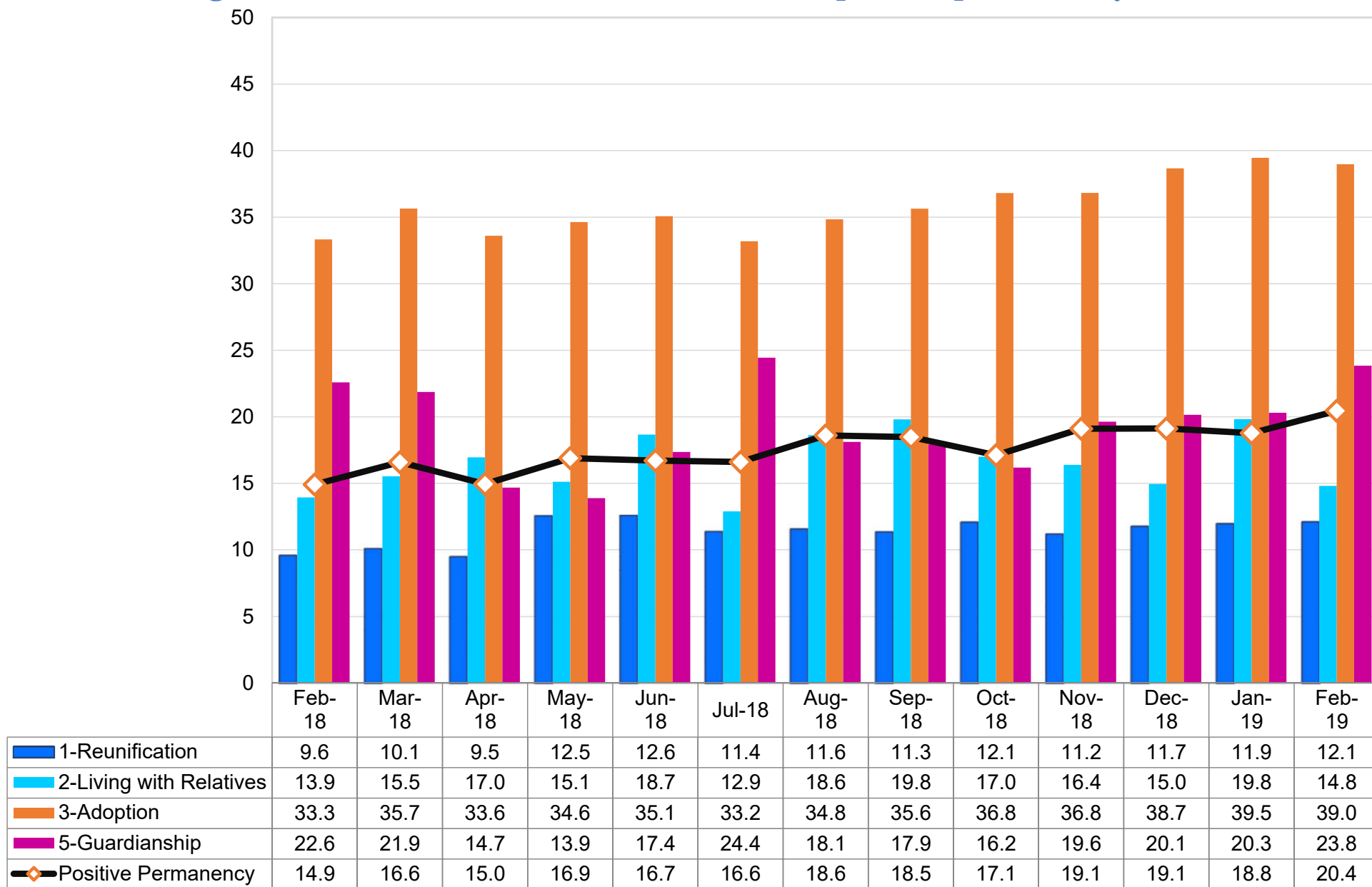
How many children in Foster Care were discharged to another permanency during the month?



Outcome XIII: Number of Discharges (February 2018– February 2019)

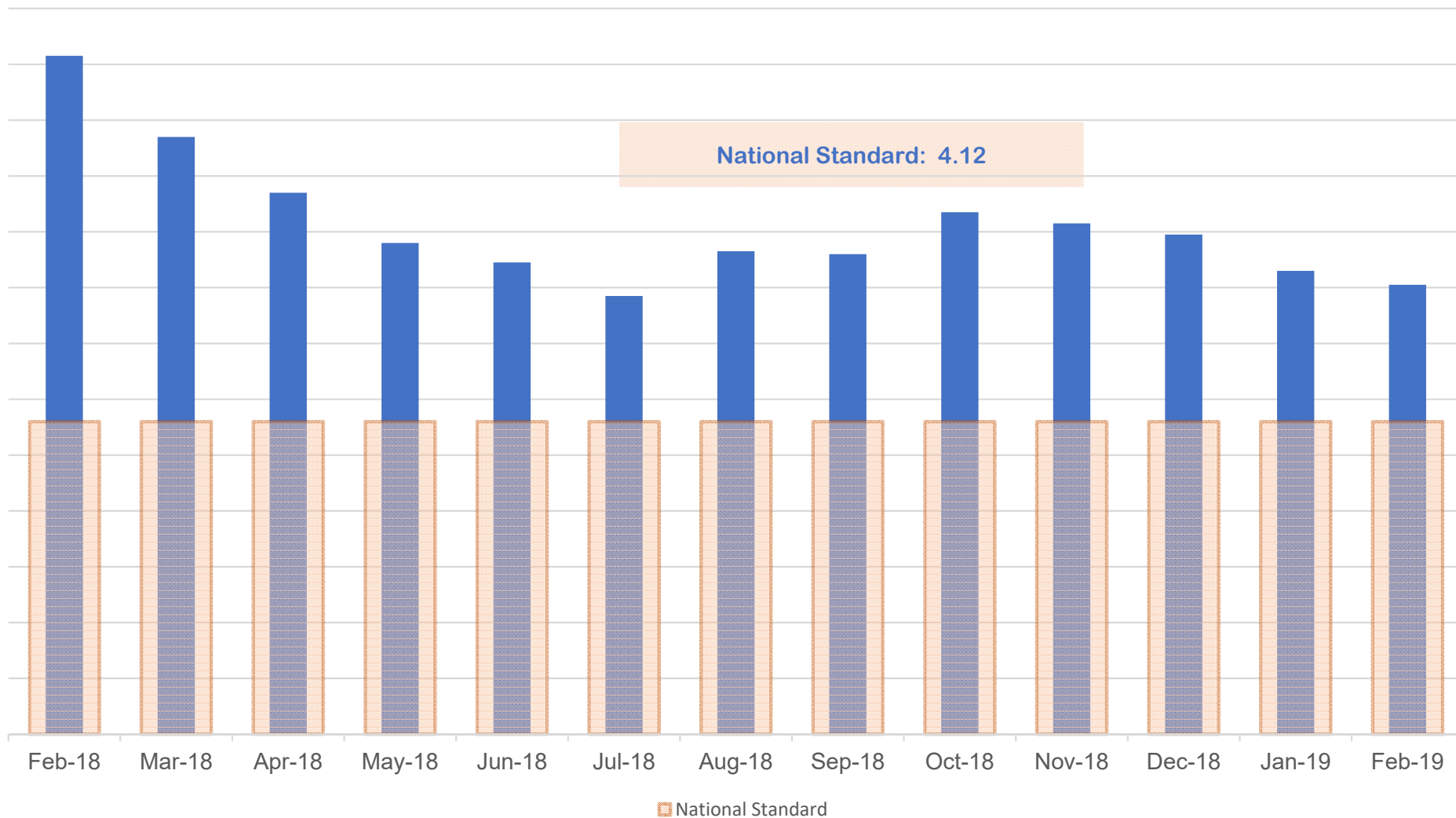
# DIVISION OF FAMILY & CHILDREN SERVICES

What is the average time in months for a foster child to reach positive permanency?



Outcome XIII - A: Number of Discharges (February 2018 – February 2019)

## How is the state of Georgia performing on the federal measure of Placement Stability?



Feb-18	Mar-18	Apr-18	May-18	Jun-18	Jul-18	Aug-18	Sep-18	Oct-18	Nov-18	Dec-18	Jan-19	Feb-19
5.43	5.14	4.94	4.76	4.69	4.57	4.73	4.72	4.87	4.83	4.79	4.66	4.61

# Appendices

**APPENDIX A**

**Regional Chart of Outcome VI**

**Children in DFCS Custody Under the Age of 18  
(February 2018 – February 2019)**

# DIVISION OF FAMILY & CHILDREN SERVICES

## Outcome VI: Children in DFCS Custody Under the Age of 18 (By Region) (February 2018 – February 2019)

Region	Feb-18	Mar-18	Apr-18	May-18	Jun-18	Jul-18	Aug-18	Sep-18	Oct-18	Nov-18	Dec-18	Jan-19	Feb-19
1	1,459	1,516	1,526	1,496	1,471	1,426	1,450	1,487	1,482	1,497	1,447	1,426	1,412
2	916	969	973	984	977	1,003	994	995	981	975	975	968	989
3	987	986	974	959	966	960	967	991	1,007	1,017	1,041	1,047	1,080
4	1,124	1,143	1,141	1,162	1,163	1,132	1,119	1,102	1,104	1,088	1,050	1,030	1,029
5	1,192	1,209	1,225	1,225	1,200	1,183	1,192	1,201	1,195	1,156	1,142	1,132	1,109
6	773	776	770	767	744	730	729	718	710	692	686	664	643
7	654	698	718	715	722	735	760	772	758	740	723	717	708
8	742	745	746	749	749	760	764	763	761	741	735	721	729
9	587	590	588	588	575	572	566	561	543	533	500	499	489
10	777	771	775	759	756	749	753	767	769	778	782	789	795
11	1,219	1,265	1,261	1,261	1,251	1,257	1,250	1,246	1,237	1,236	1,212	1,247	1,242
12	976	1,005	999	1,013	1,003	983	982	978	978	955	938	936	946
13	1,429	1,484	1,450	1,463	1,403	1,375	1,359	1,344	1,340	1,336	1,316	1,296	1,282
14	1,649	1,676	1,672	1,679	1,671	1,618	1,619	1,626	1,606	1,610	1,573	1,568	1,533
<b>Statewide</b>	<b>14,484</b>	<b>14,833</b>	<b>14,818</b>	<b>14,820</b>	<b>14,651</b>	<b>14,483</b>	<b>14,504</b>	<b>14,551</b>	<b>14,471</b>	<b>14,354</b>	<b>14,120</b>	<b>14,040</b>	<b>13,986</b>



APPENDIX B

**Regional Chart of Outcome XIV**

**Placement Stability Performance Coefficient  
(February 2018 – February 2019)**

National Standard = 4.12

Desired Goal to Meet the PIP = 6.01

# DIVISION OF FAMILY & CHILDREN SERVICES

## Outcome VI: Placement Stability for Children in DFCS Custody Under the Age of 18 (By Region) (February 2018 – February 2019)

Region	Feb-18	Mar-18	Apr-18	May-18	Jun-18	Jul-18	Aug-18	Sep-18	Oct-18	Nov-18	Dec-18	Jan-19	Feb-19
1	5.79	5.65	5.49	5.25	4.92	4.85	4.97	5.23	5.28	5.24	5.27	5.14	5.20
2	5.85	5.49	5.19	4.86	4.96	4.97	5.11	5.00	5.04	4.87	4.76	4.54	4.39
3	5.26	4.80	4.53	4.39	4.25	3.94	4.21	4.13	4.41	4.17	4.17	4.06	4.15
4	5.65	5.10	4.77	4.50	4.16	4.07	3.98	4.03	4.17	4.21	3.97	4.06	3.89
5	4.81	4.69	4.73	4.71	4.95	4.95	5.22	5.21	5.49	5.68	5.60	5.33	5.12
6	5.24	5.02	4.62	4.37	4.54	4.39	4.38	4.59	4.75	4.88	4.65	4.99	5.65
7	5.05	4.57	4.30	3.77	3.69	3.61	3.44	3.25	3.23	3.16	3.33	3.37	3.37
8	5.35	4.60	4.20	4.15	3.96	3.79	4.13	4.26	4.14	3.96	4.04	3.95	3.70
9	4.15	4.14	3.85	3.69	3.90	3.70	3.58	3.44	3.95	3.93	3.85	3.84	3.79
10	5.13	4.47	4.06	3.74	3.80	3.38	3.12	2.97	2.95	3.12	3.29	3.64	3.93
11	4.69	4.80	4.68	4.49	4.40	4.23	4.35	4.07	3.96	3.82	3.73	3.55	3.48
12	5.14	4.90	4.57	4.33	4.32	4.13	4.74	4.58	4.87	4.75	4.50	4.42	4.23
13	6.58	6.12	6.12	6.05	6.22	6.23	6.45	6.31	7.03	7.11	6.80	6.62	6.14
14	5.82	5.70	5.72	5.80	5.49	5.45	5.76	6.07	6.11	6.06	6.09	5.61	5.58
<b>Statewide</b>	<b>5.43</b>	<b>5.14</b>	<b>4.94</b>	<b>4.76</b>	<b>4.69</b>	<b>4.57</b>	<b>4.73</b>	<b>4.72</b>	<b>4.87</b>	<b>4.83</b>	<b>4.79</b>	<b>4.66</b>	<b>4.61</b>