

Monthly Measures and Results for November 2018*

*(Reflects Safety Outcomes as of September 30, 2018 And
Permanency Outcomes as of October 31, 2018)
With Appendices

This report is produced by the Data Unit. For questions or comments, you may contact one of the following:
Samantha Adams, Director (Samantha.Adams@dhs.ga.gov)
John Roach, Unit Manager (John.Roach@dhs.ga.gov)
Vickie Fluellen, Operations Analyst 3 (Vickie.Fluellen@dhs.ga.gov)

- Part I: Definitions And Data Sources contained in Report**
- Part II: Safety Outcomes**
- Part III: Permanency/Well-being Outcomes**
- Part IV: Appendices**
 - A. Regional Charts of Outcome V (Trend of Unique Children in the Legal Custody of DFCS Under the Age of 18)**
 - B. Regional Charts of Outcome XIV: Stability Performance Coefficient (Number of Moves/Number of Days in Custody * 1000)**

***There are no revisions to this document to date.

SAFETY: Children are first and foremost, protected from abuse and neglect.

Outcome I: Child Protective Services Cases

Count of unique CPS Investigations and Family Preservation (Ongoing) stages open at any point during the month vs. Average count of unique CPS Investigations, Family Preservation, and Family Support stages for the prior four state fiscal years. Outcome is calculated 45 days prior to the date of report.

Outcome 1A: Family Support Cases Only: Count of unique Family Support stages open at any point during the month vs average of four prior state fiscal years..

Outcome 1B: Family Preservation Cases Only: Count of unique Family Preservation stages open at any point during the month vs average of four prior state fiscal years..

Outcome 1C: Investigation Cases Only: Count of unique Investigation stages open at any point during the month vs average of four prior state fiscal years.

Outcome 1C_1: Comparison of Investigations that were open at anytime during the month vs investigations opened during the month vs the average of the prior state fiscal years at any point in time.

Sources: SHINES

Outcome II: Recurrence of Substantiated Child Maltreatment

Of all the children who were victims of substantiated maltreatment in the first 6 months of the year, the percentage that had substantiated maltreatment within the following 6 months. Outcome is calculated 45 days prior to the date of report. Each month is calculated as a rolling calendar year. *National Standard: less than or equal to 5.40%*

Source: SHINES

Outcome III: Disposition of Child Abuse and Neglect Reports

Chart reflects the disposition of reports received in a particular month. Data includes count of Family Support, Investigations -- Substantiated Investigations and Unsubstantiated Investigations, and Screen-outs. Outcome is calculated 45 days prior to the date of report.

Source: SHINES

PERMANENCY: Children have permanency and stability in their living situations.

Outcome IV: Subsequent Case-type of Investigations by Disposition

Chart reflects the disposition of investigations received in a particular month by the subsequent case type. Charts are broken out by substantiated and unsubstantiated investigation and their subsequent track assignment or final disposition. Outcome is calculated 45 days prior to the date of report.

Source: SHINES

Outcome V: Number of Child Placement Services Cases

Count of unique children who were involved in an open Foster Care or Adoption stage during the month. In placement services each child who is the principal (PC) is considered a case. The chart also reveals the average of the last four state fiscal years to provide the viewer with a prior glimpse of the trend in placement cases.

Source: SHINES

Outcome VI: Children in the Legal Custody of DFCS Under the Age of 18

Count of unique children who were in the legal custody of DFCS (17 years of age and under) at some point during the month.

Source: SHINES

Outcome VI-A: Age Distribution of Children in Custody: Chart is a percentage of children in DFCS Custody by age group.

Outcome VII: Comparison of Foster Care Entries & Exits

Number of children who have entered foster care and number of children who have exited foster care during the month. Total children at end of month show the number of children on the last day of the month.

Source: SHINES

Outcome VIII: Foster Care Re-entries

Of all the children who entered foster care, the percentage that were discharged from a prior episode of foster care within 12 months of the current foster care placement. National Standard: less than or equal to 8.60%.

Source: SHINES

PERMANENCY cont'd: Children have permanency and stability in their living situations.

Outcome IX: Foster Care Length of Stay

Percentage of children by number of months in foster care during each month.

Source: SHINES

Outcome X: Length of Time to Achieve Reunification

Percentage of children who exited care during the month through reunification with their family that reunified in less than 12 months from the date of their removal. National Standard: greater than or equal to 76.20%

Source: SHINES

Outcome XI: Children Placed with Relatives

Of all children in DFCS custody, the percentage that are placed with a relative or a relative foster home.

State Target: greater than or equal to 30.00%

Source: SHINES

Outcome XII: Extended Youth Services

Number of children ages 18 – 21 who remained in the custody of DFCS beyond their birth month.

Source: SHINES

Outcome XIII: Monthly Discharges

The number of children who were discharged during the month by permanency decision divided into two charts by positive permanency vs other types.

Source: SHINES

Outcome XIII - A: Average Number of Months to Achieve Positive Permanency

Of all children in Outcome XIII, the number of months from removal (entry into foster care) until exit due to reunification, relative, adoption or guardianship..

Source: SHINES

PERMANENCY cont'd: Children have permanency and stability in their living situations.

Outcome XIV: Placement Stability Performance (Number of Moves/Number of Days in Custody * 1000)

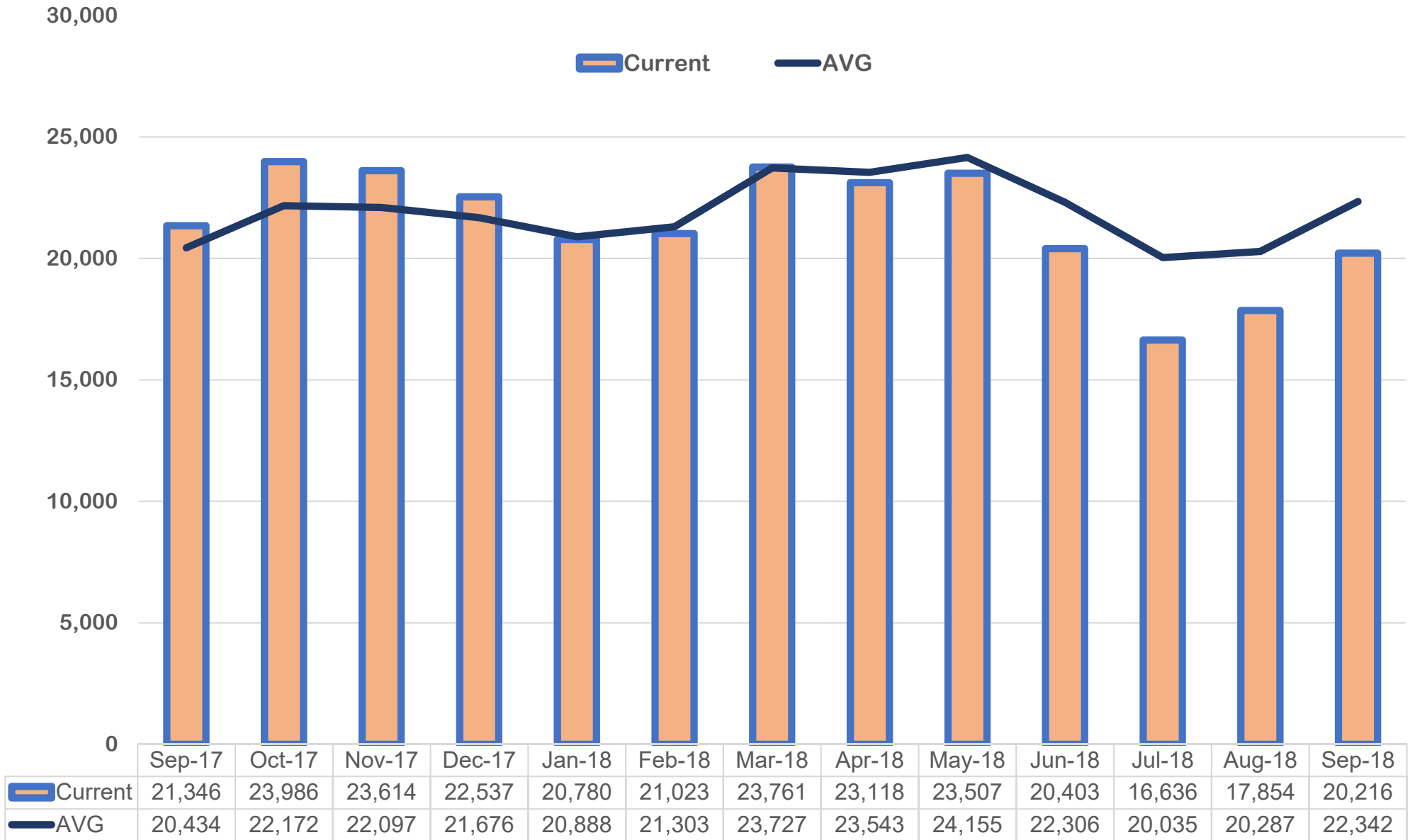
A calculated value based upon the ACF CFSS Round 3 which is part of Program Improvement. It is calculated from a rolling 12 month population of the entry cohort where the child remained in custody for over 8 days and was not 18 on the date of removal. The federal standard is 4.12.

Source: SHINES

***Note: Data may vary from month to month due to 13 month data trends being re-run over the time span for the various outcomes in this report.*

DIVISION OF FAMILY & CHILDREN SERVICES

How many CPS Cases were open monthly during the last 13 months?

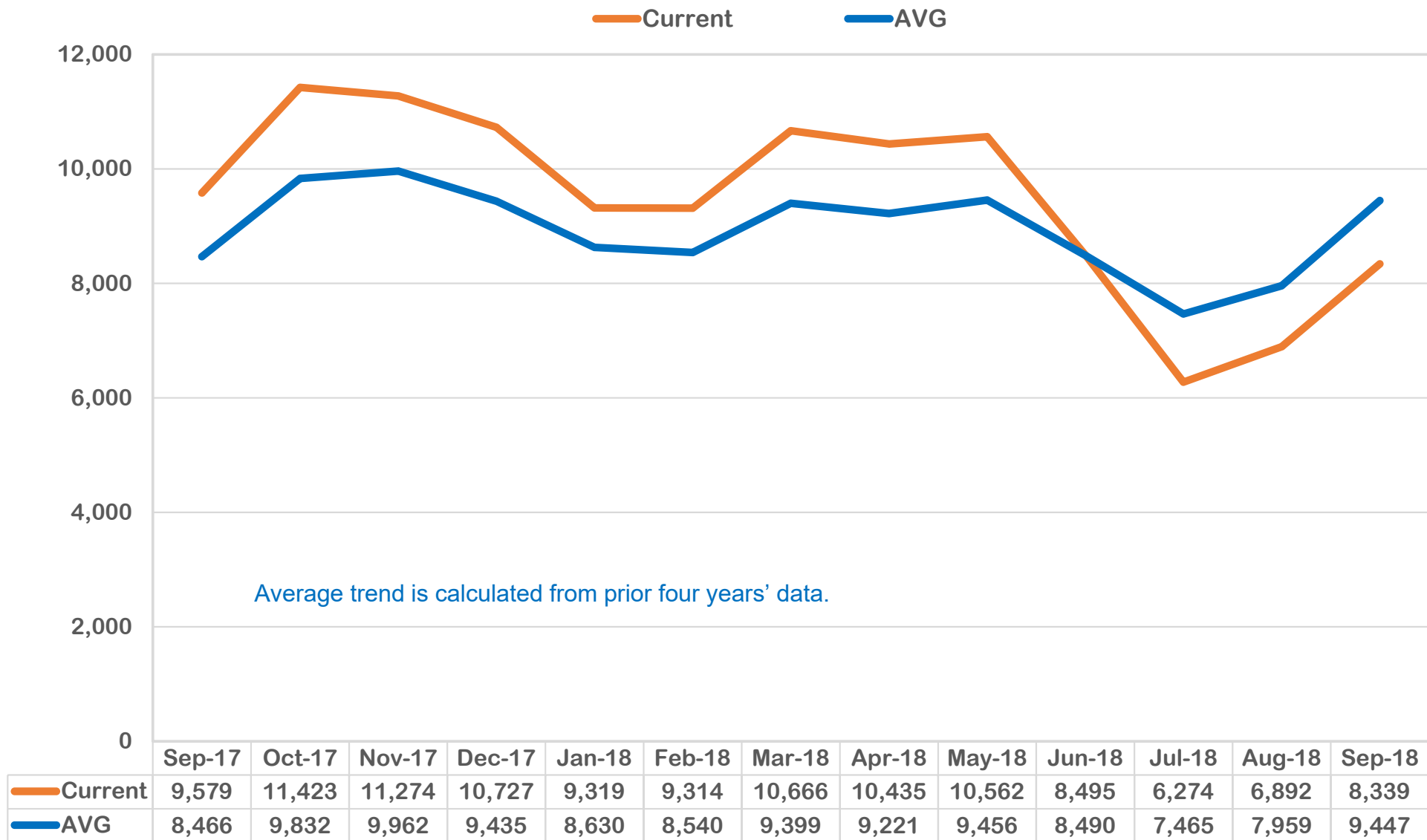


Average trend is calculated from prior four years.

Outcome I: Child Protective Services Cases, (September 2017 – September 2018)

DIVISION OF FAMILY & CHILDREN SERVICES

How many Family Support Cases were open per month for the last 13 months?

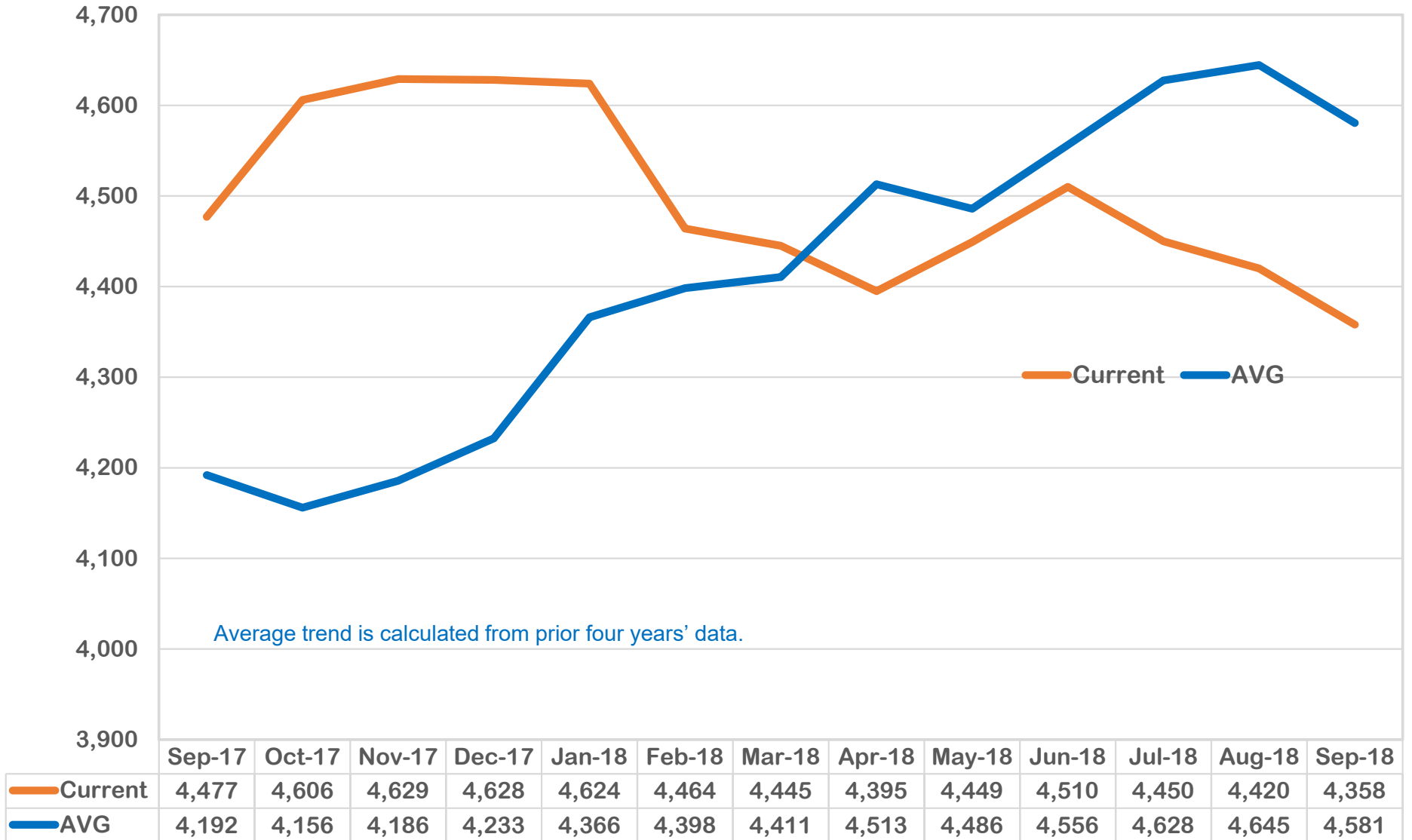


The graph above reveals a similar trend in the current 13-month trend compared to the average of the prior four years' average. During July 2018, there is a 16% decline in the number of cases when compared to the prior 4 year's averages. This was a 26% drop from the prior month of June 2018. The trend in September 2018 continues to increase since the drop in July 2018.

Outcome IA: Child Protective Services Cases Family Support Cases Only (September 2017 – September 2018)

DIVISION OF FAMILY & CHILDREN SERVICES

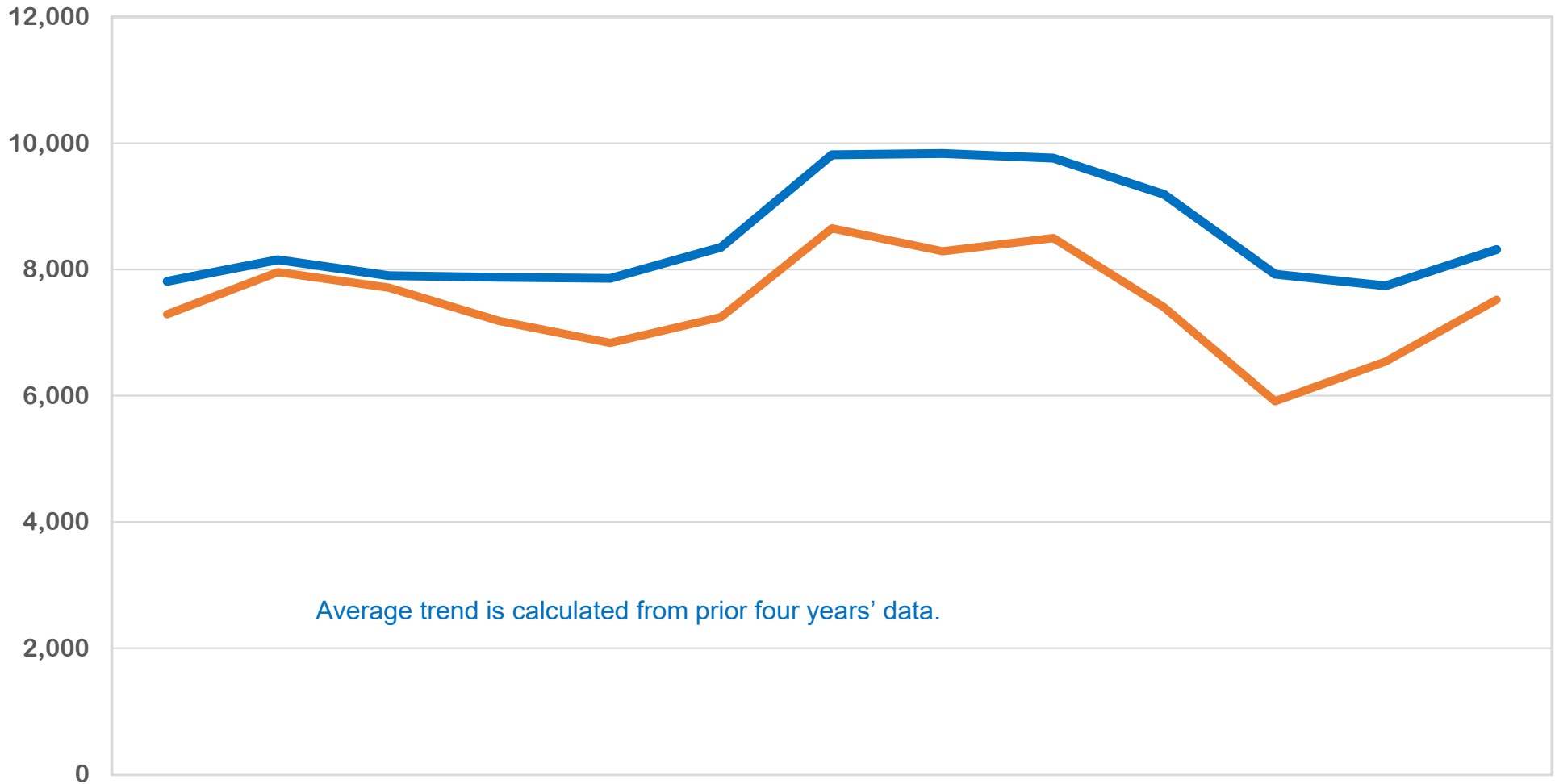
How many Family Preservation Cases were open per month during for the last 13 months?



Family Preservation cases are higher than the average trend of the prior four years' average trend during the first 8 of the trend followed by an inverse effect. In September 2018 Family Preservation cases were 4.9% lower than the average of the last 4 years.

DIVISION OF FAMILY & CHILDREN SERVICES

How many Investigation Cases were open per month for the past 13 months?



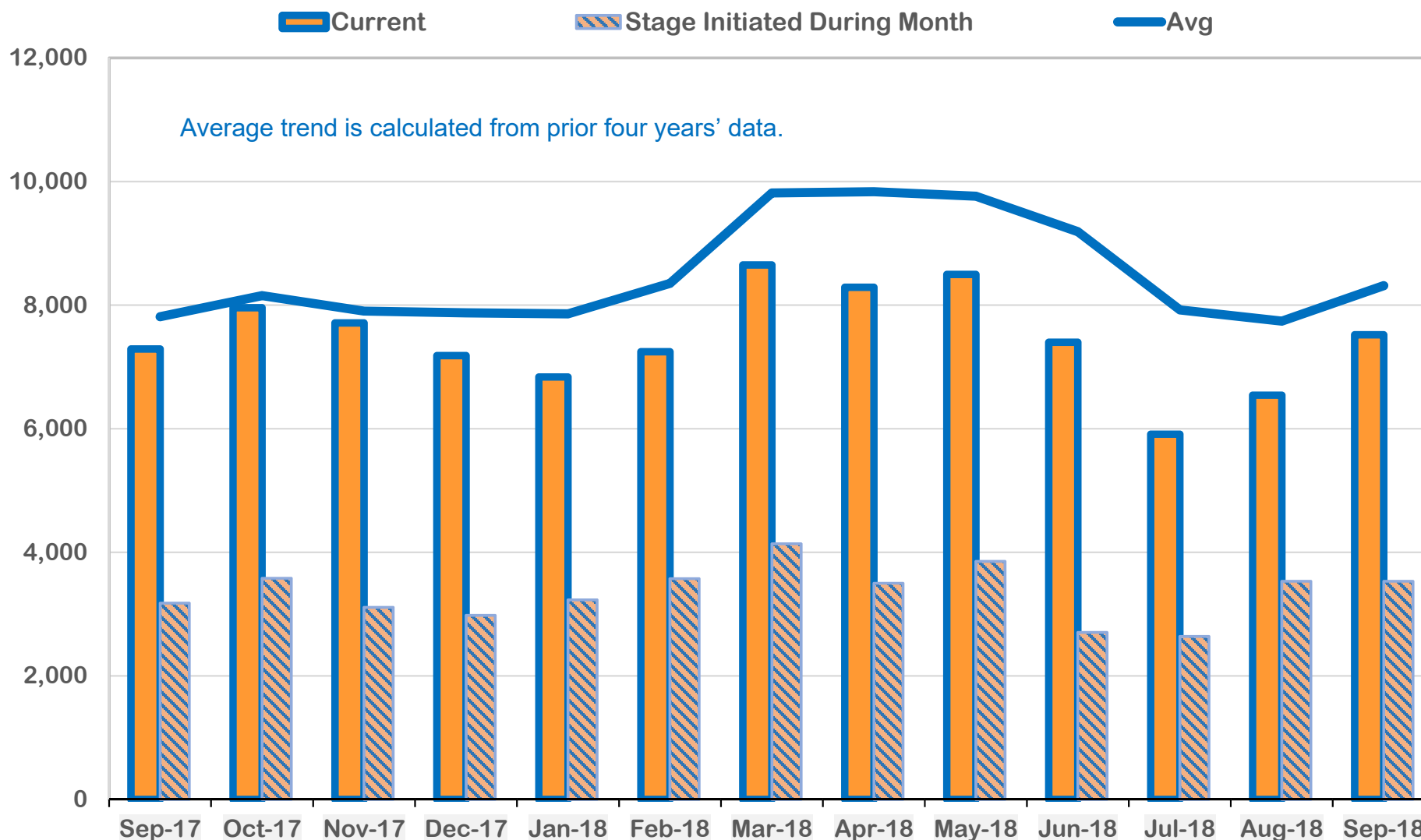
	Sep-17	Oct-17	Nov-17	Dec-17	Jan-18	Feb-18	Mar-18	Apr-18	May-18	Jun-18	Jul-18	Aug-18	Sep-18
— Current	7,290	7,957	7,711	7,182	6,837	7,245	8,650	8,288	8,496	7,398	5,912	6,542	7,519
— Avg	7,812	8,154	7,902	7,875	7,860	8,352	9,815	9,836	9,762	9,188	7,923	7,741	8,315

Although the last 13 months has seen an increase in investigations of over 25% between the averages of the prior 13 months (not pictured), the current year's total investigations reveals an improvement in investigations as indicated in the lower case loads.

Outcome IC: Child Protective Services Cases Investigation Cases Only (September 2017 – September 2018)

DIVISION OF FAMILY & CHILDREN SERVICES

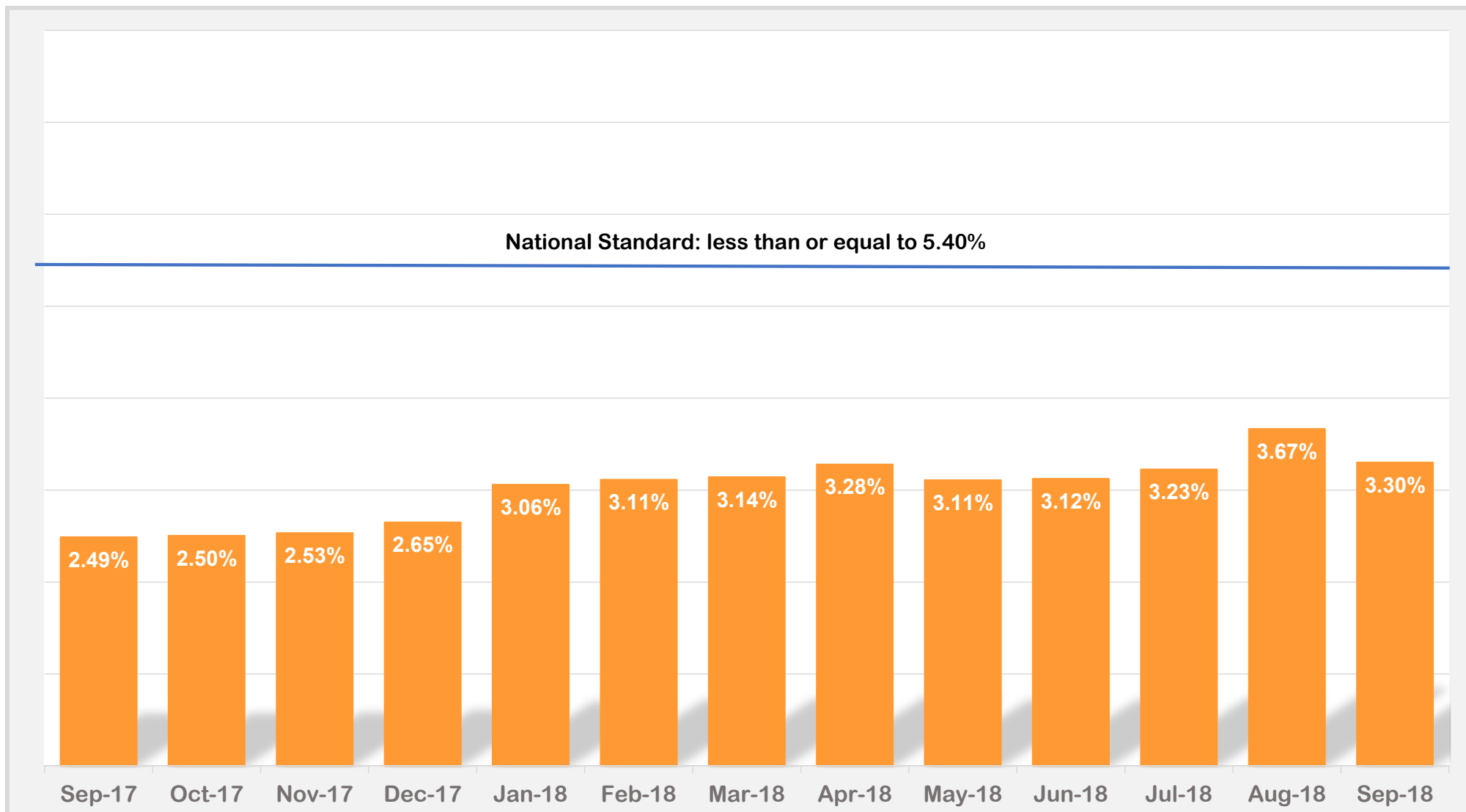
How many Investigation Cases were open at any time during the month Vs Investigation Cases that were initiated during the month for the past 13 months?



This chart indicates that during each month, the cases that are opened during the month are less than half of the overall open cases during the month. Additionally, the increases and decreases in those opened during the month resemble the trend in the current cases open during the month excluding Sep 2017.

Outcome IC_1: Child Protective Services Cases Investigation Cases Only (September 2017 – September 2018)

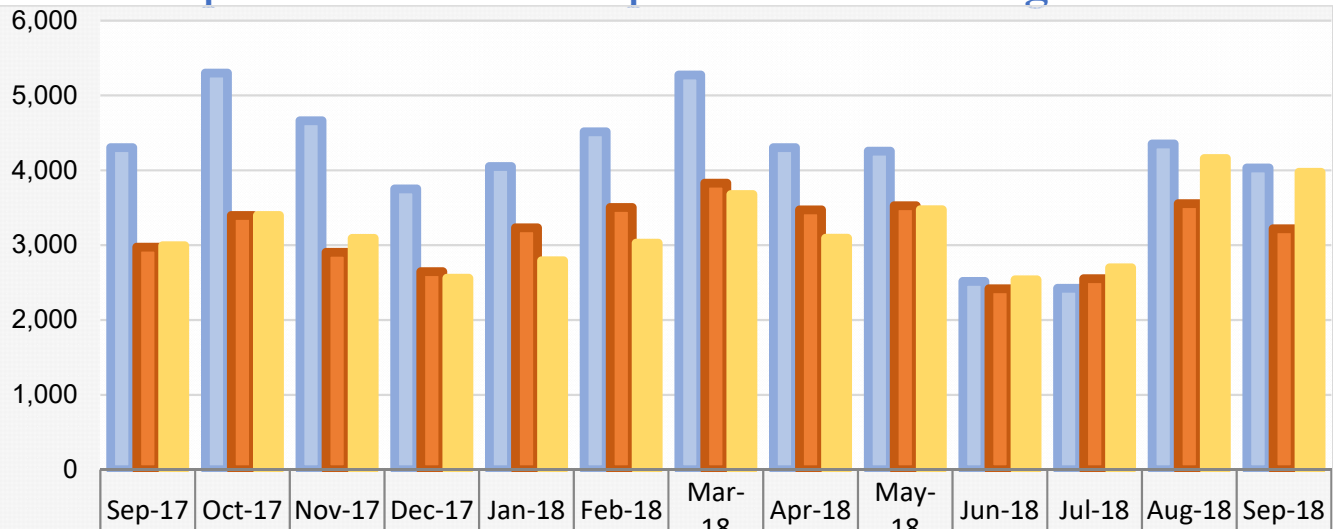
What percentage of children had a subsequent substantiated incident of maltreatment within 6 months?



The trend reveals that Georgia has consistently maintained a low recurrence rate below the national standard of 5.4%. However, increases can be seen from October 2017 – May 2018. Georgia has a higher percentage of maltreatment in August 2018 as compared to August 2017.

DIVISION OF FAMILY & CHILDREN SERVICES

What was the disposition of all CPS reports received during the month ?

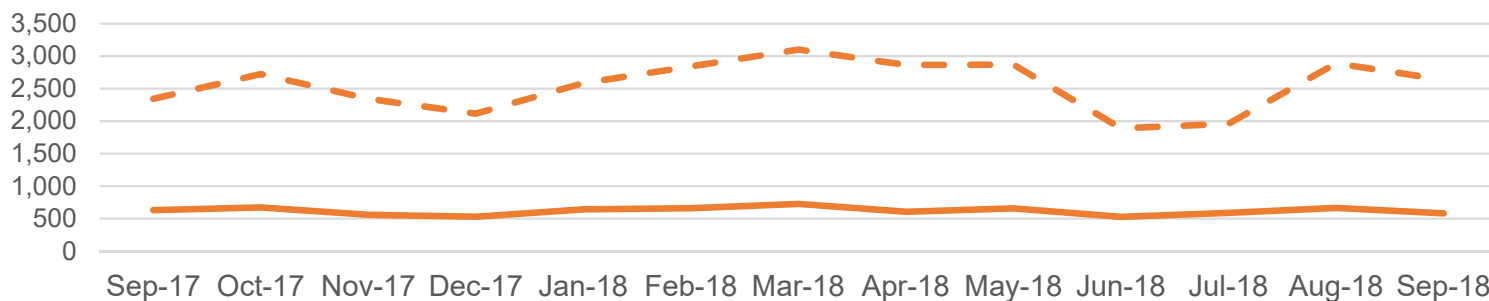


This chart reveals the disposition of CPS reports that were received for service. In September 2018, 29% were investigations, 36% were Family Support, and 35% were Screen Outs.

The lower graph shows how many investigations were substantiated and unsubstantiated.

	Sep-17	Oct-17	Nov-17	Dec-17	Jan-18	Feb-18	Mar-18	Apr-18	May-18	Jun-18	Jul-18	Aug-18	Sep-18
Family Support	4,304	5,299	4,662	3,752	4,050	4,516	5,275	4,304	4,256	2,516	2,423	4,352	4,032
Investigations	2,974	3,397	2,905	2,647	3,232	3,503	3,829	3,472	3,528	2,418	2,551	3,555	3,219
Screenouts	2,993	3,397	3,091	2,559	2,791	3,026	3,676	3,093	3,473	2,536	2,698	4,157	3,973

Investigation Types

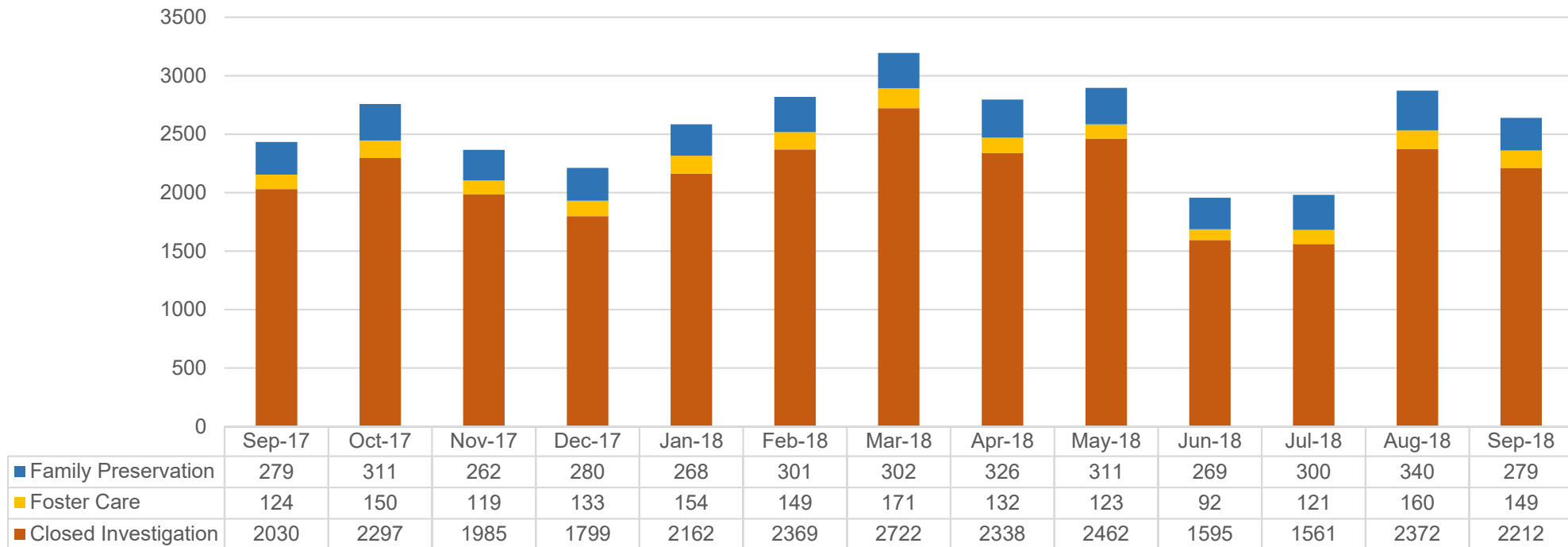
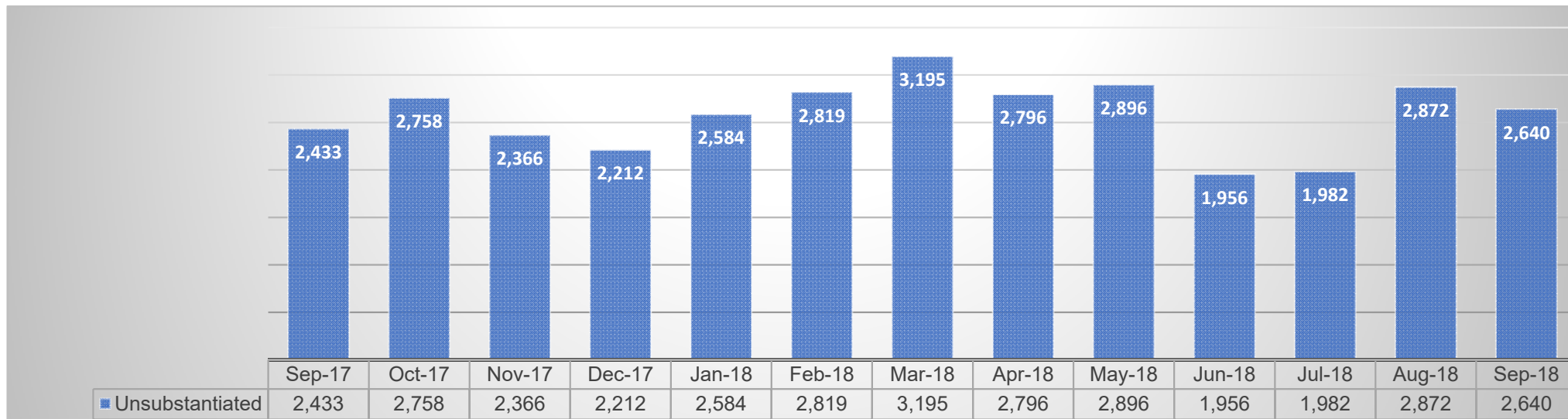


	Sep-17	Oct-17	Nov-17	Dec-17	Jan-18	Feb-18	Mar-18	Apr-18	May-18	Jun-18	Jul-18	Aug-18	Sep-18
Substantiated	631	673	560	530	645	662	728	608	659	528	589	666	583
Unsubstantiated	2,343	2,724	2,345	2,117	2,587	2,841	3,101	2,864	2,869	1,890	1,962	2,889	2,636

What was the final disposition of closed investigations during the month?

DIVISION OF FAMILY & CHILDREN SERVICES

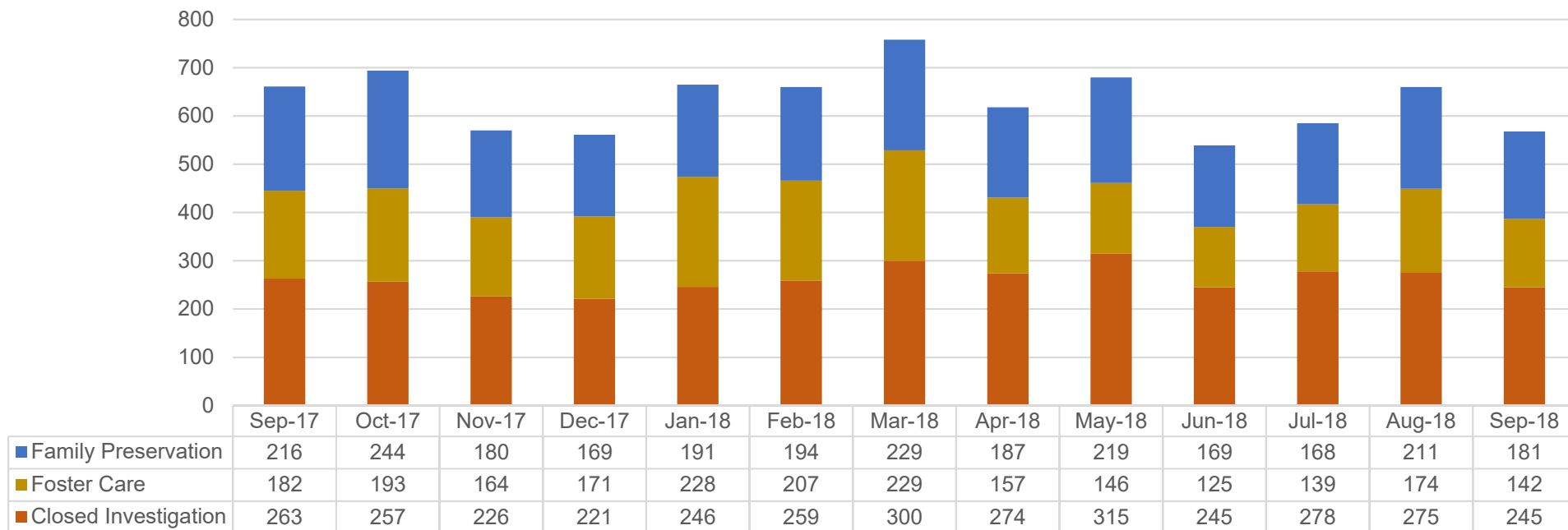
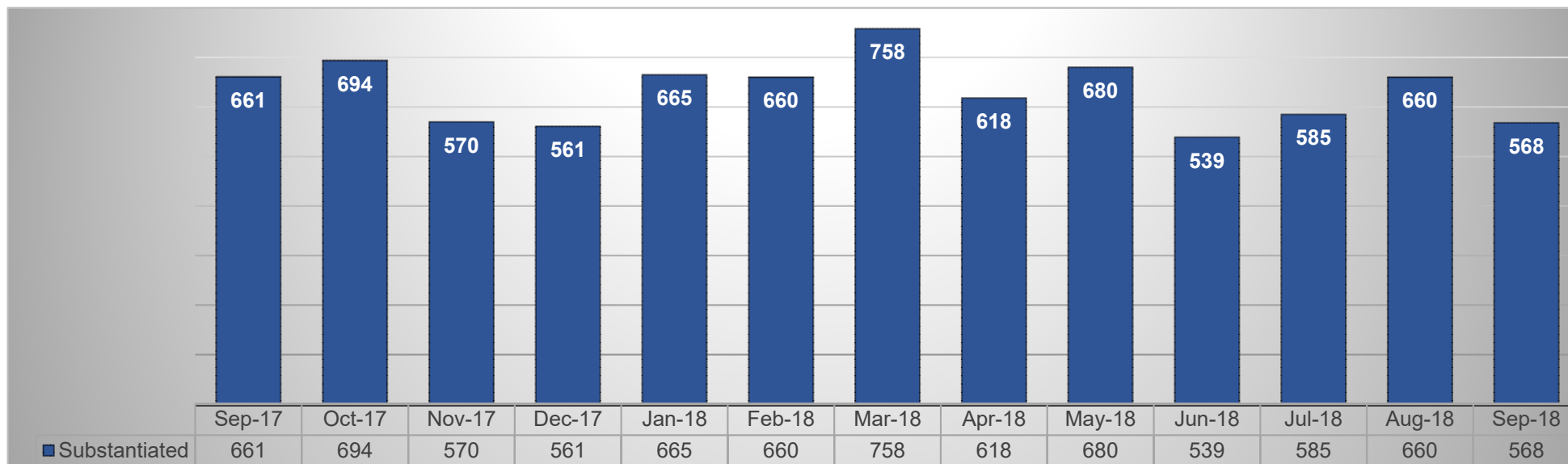
Unsubstantiated



Outcome IV: Subsequent Case-Types of Investigations (September 2017 – September 2018)

DIVISION OF FAMILY & CHILDREN SERVICES

Substantiated:

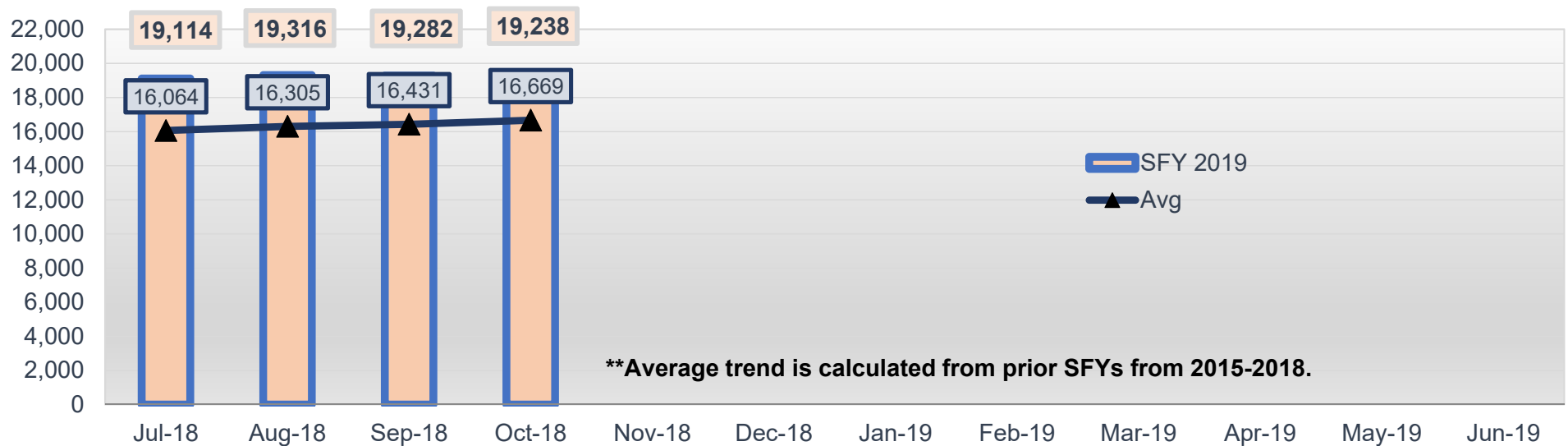
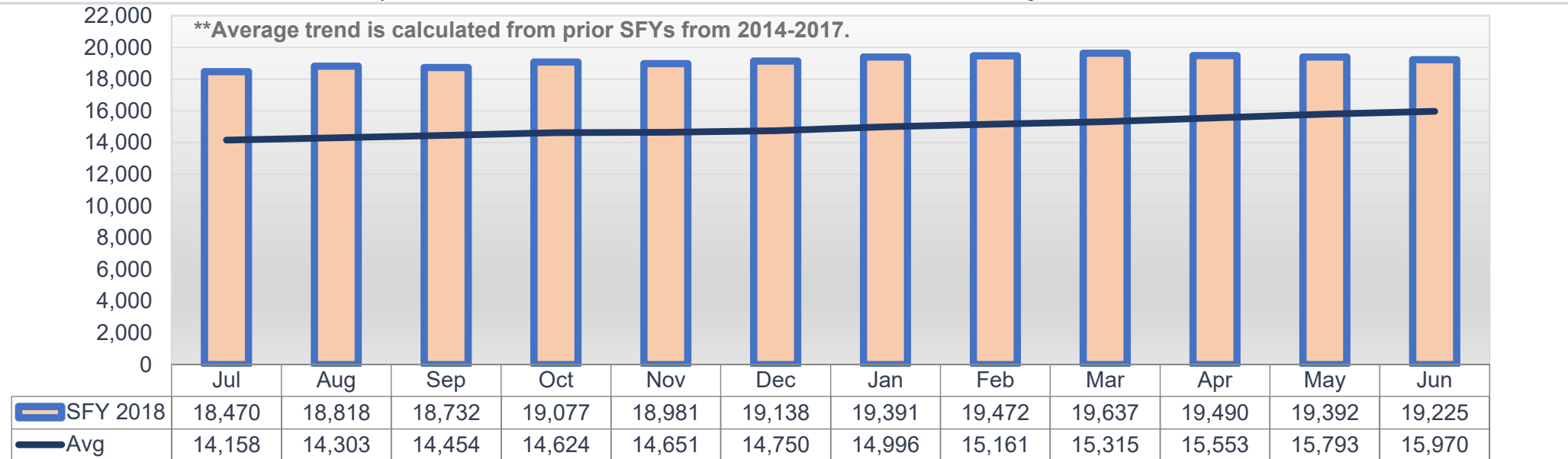


Outcome IV: Subsequent Case-Types of Investigations (September 2017 – September 2018)

DIVISION OF FAMILY & CHILDREN SERVICES

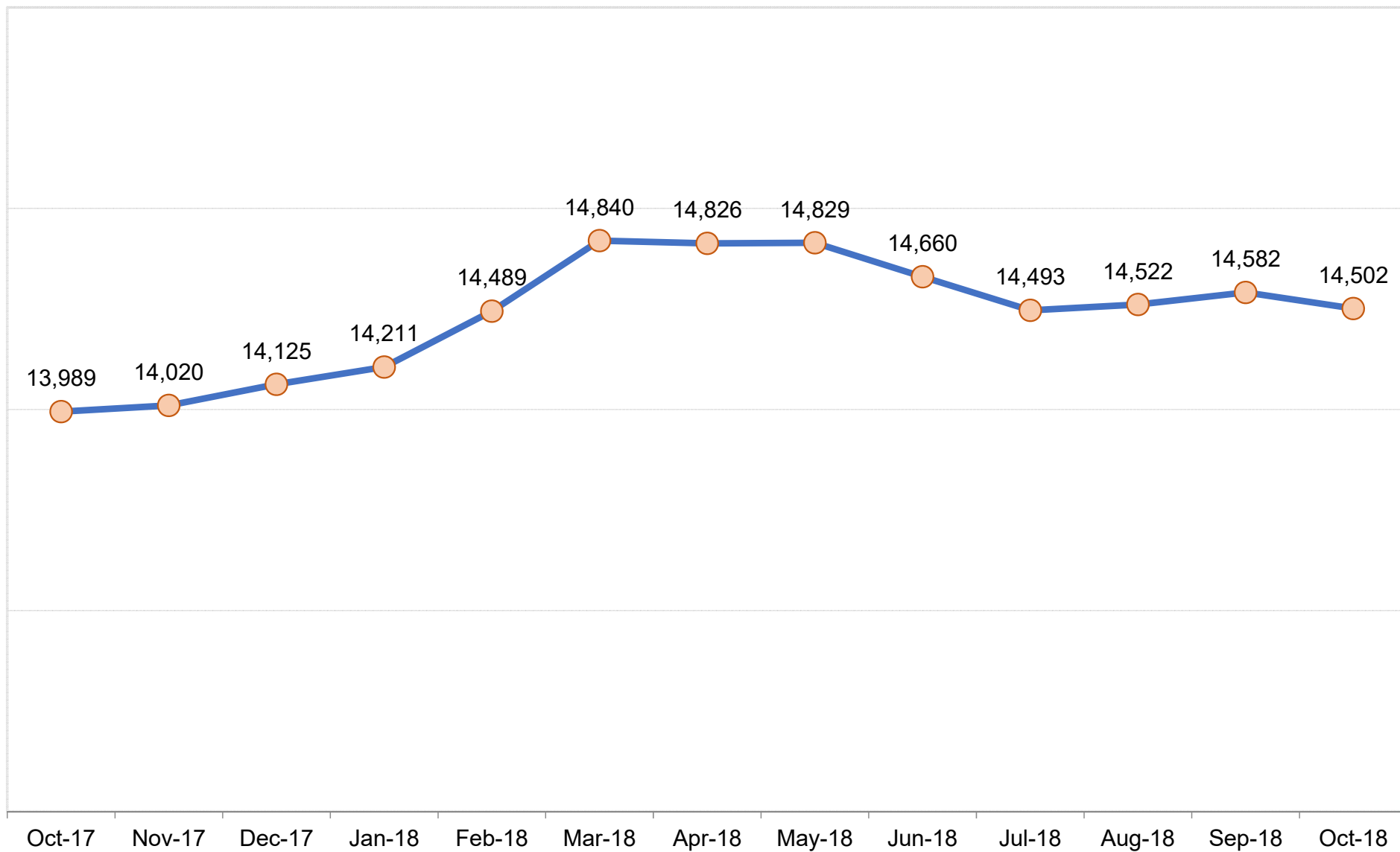
How many children were involved placement services for each month during the State Fiscal Year?

The average trend for the past four years shows a gradual increase (low slope) in cases. The placement services include continued collaboration with families after out of home care may have ended as well as those who are in out of home care with DFCS Age 0 - 21.



Outcome V: Number of Children in Placement Services (State Fiscal Year 2019 To Date)

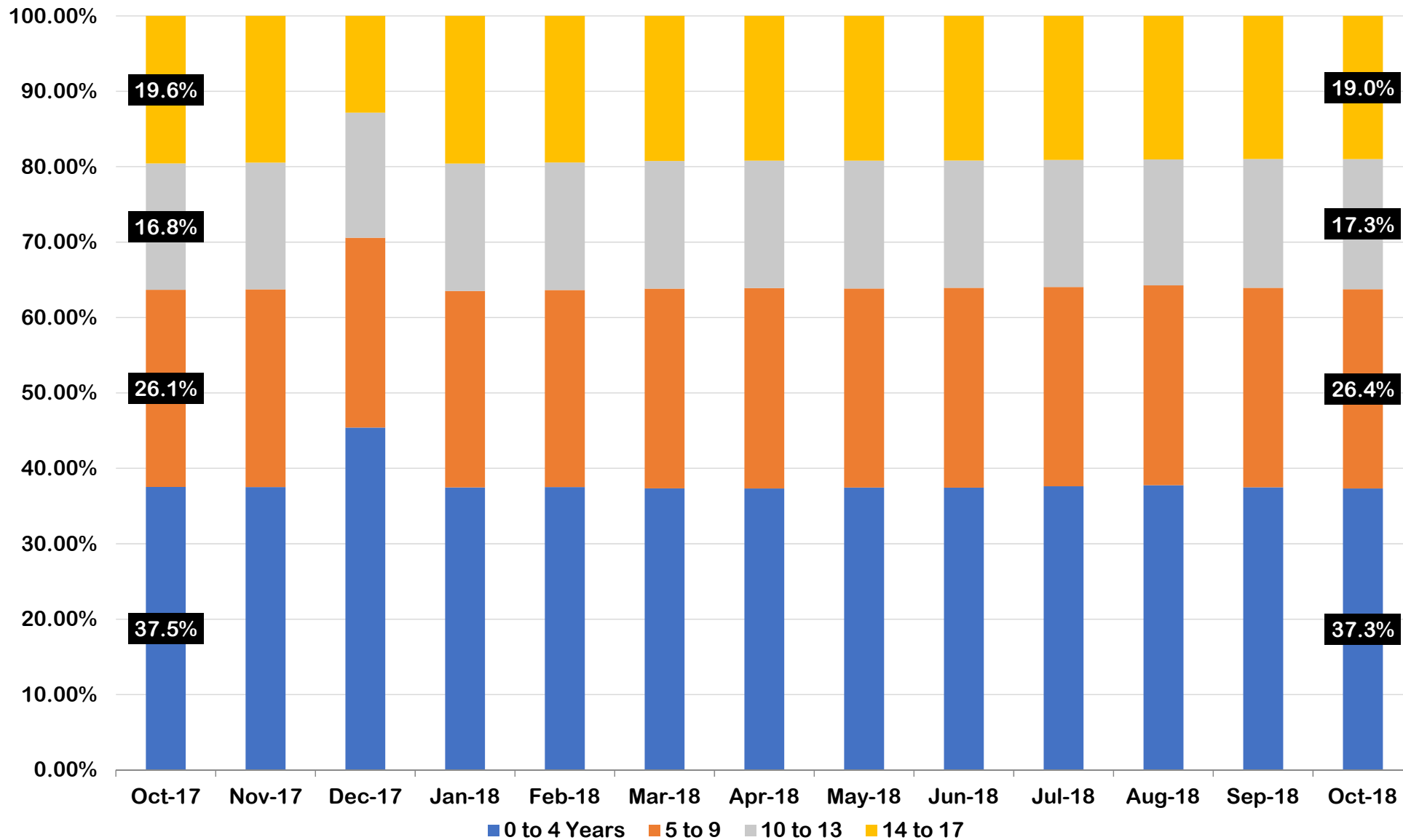
How many children were in Foster Care under the age of 18?



Outcome VI: Children in DFCS Custody Under the Age of 18 (October 2017 – October 2018)

DIVISION OF FAMILY & CHILDREN SERVICES

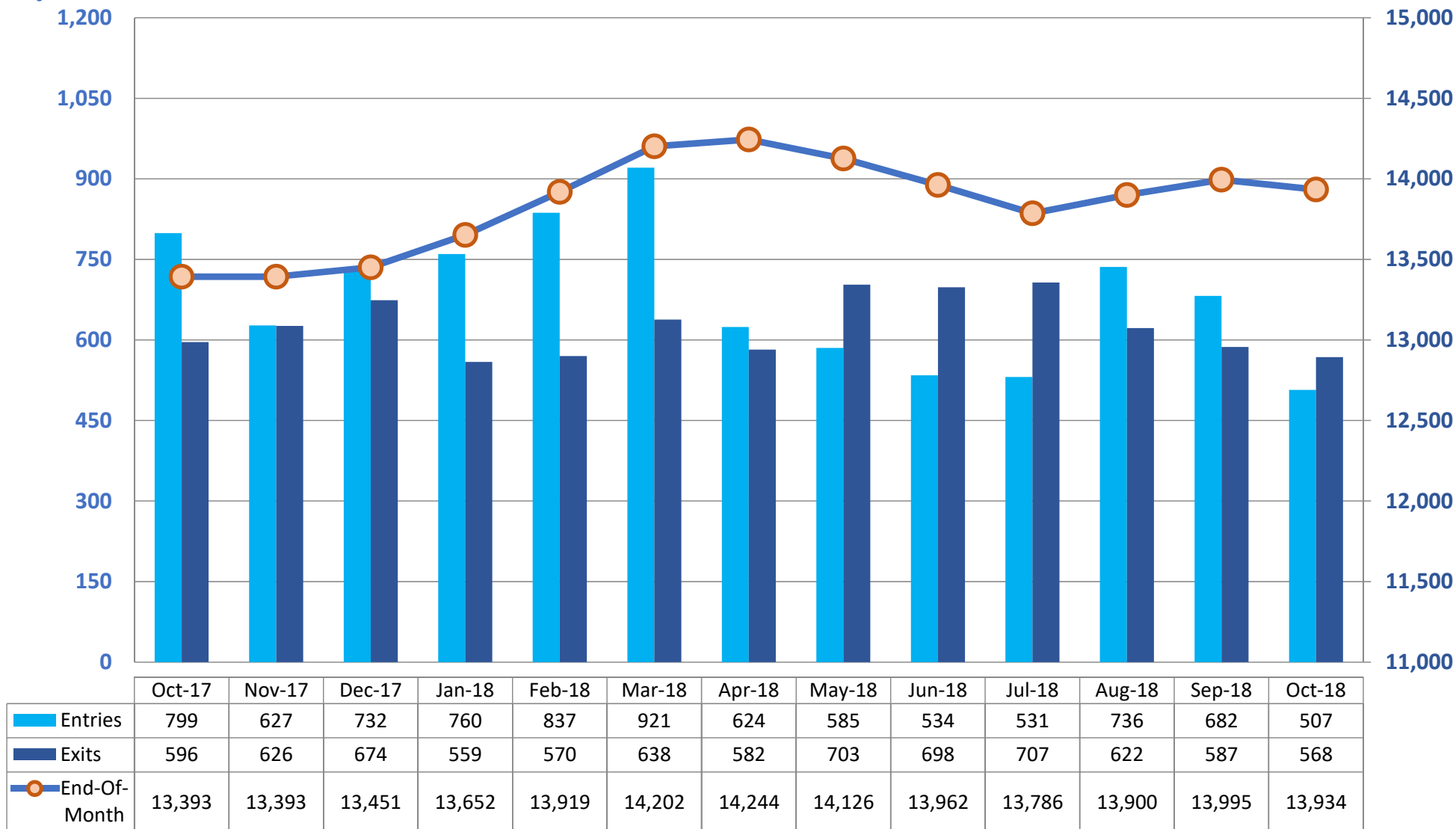
Has the age distribution of the foster population changed much over the last year?



Outcome VI-A: Children in DFCS Custody Under the Age of 18 by Age Group, (October 2017 – October 2018)

DIVISION OF FAMILY & CHILDREN SERVICES

How many children are moving in and out of Foster Care? How many remain in care on the last day?

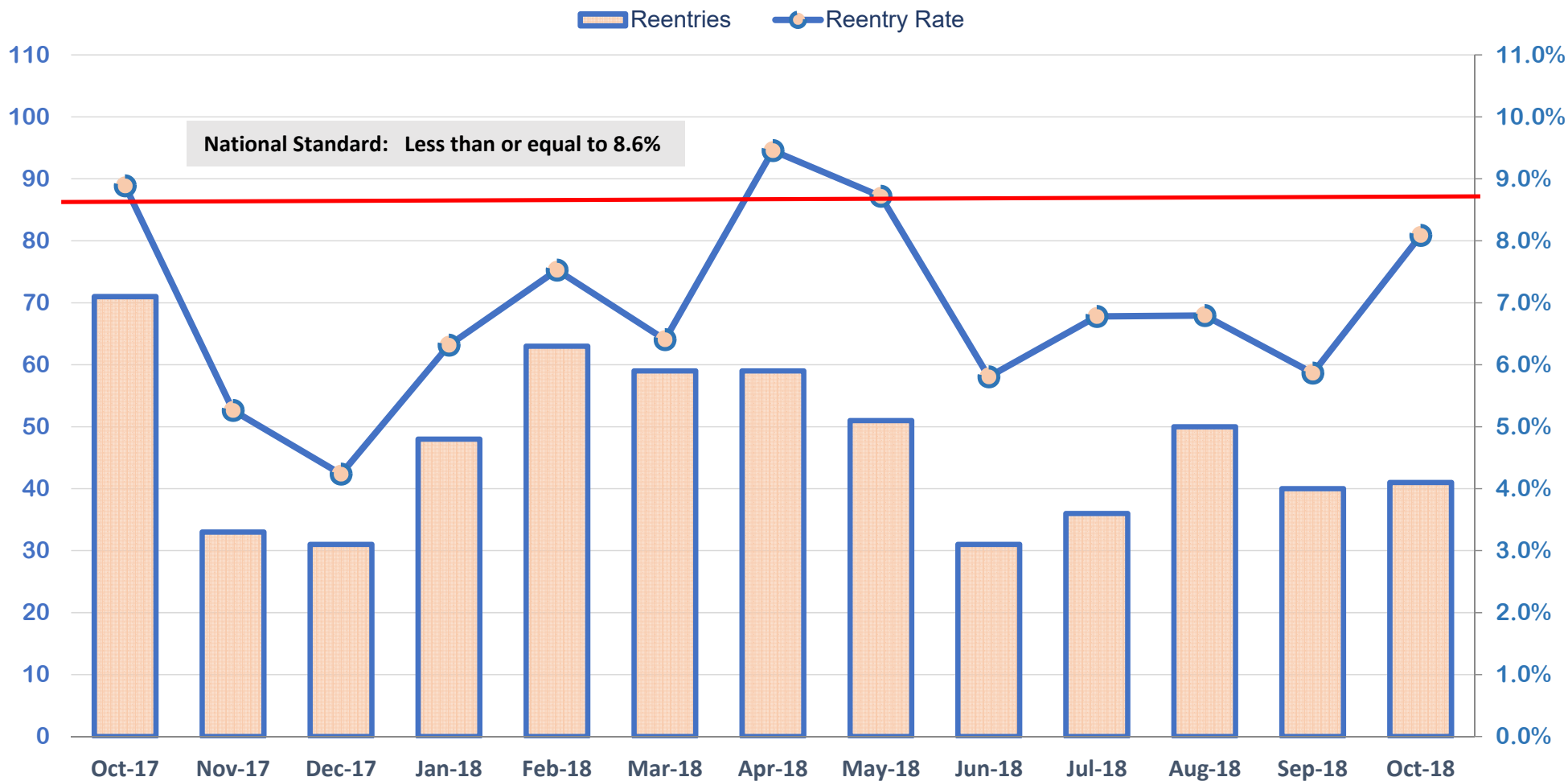


Outcome VII: Comparison of Foster Care Entries and Exits (October 2017 – October 2018)

**Reentries that occur within the same month are not double counted in the entries and exits on this chart. This chart represents unique population and movement into custody during the month.

DIVISION OF FAMILY & CHILDREN SERVICES

How many children were in a prior episode within twelve months of the current episode?

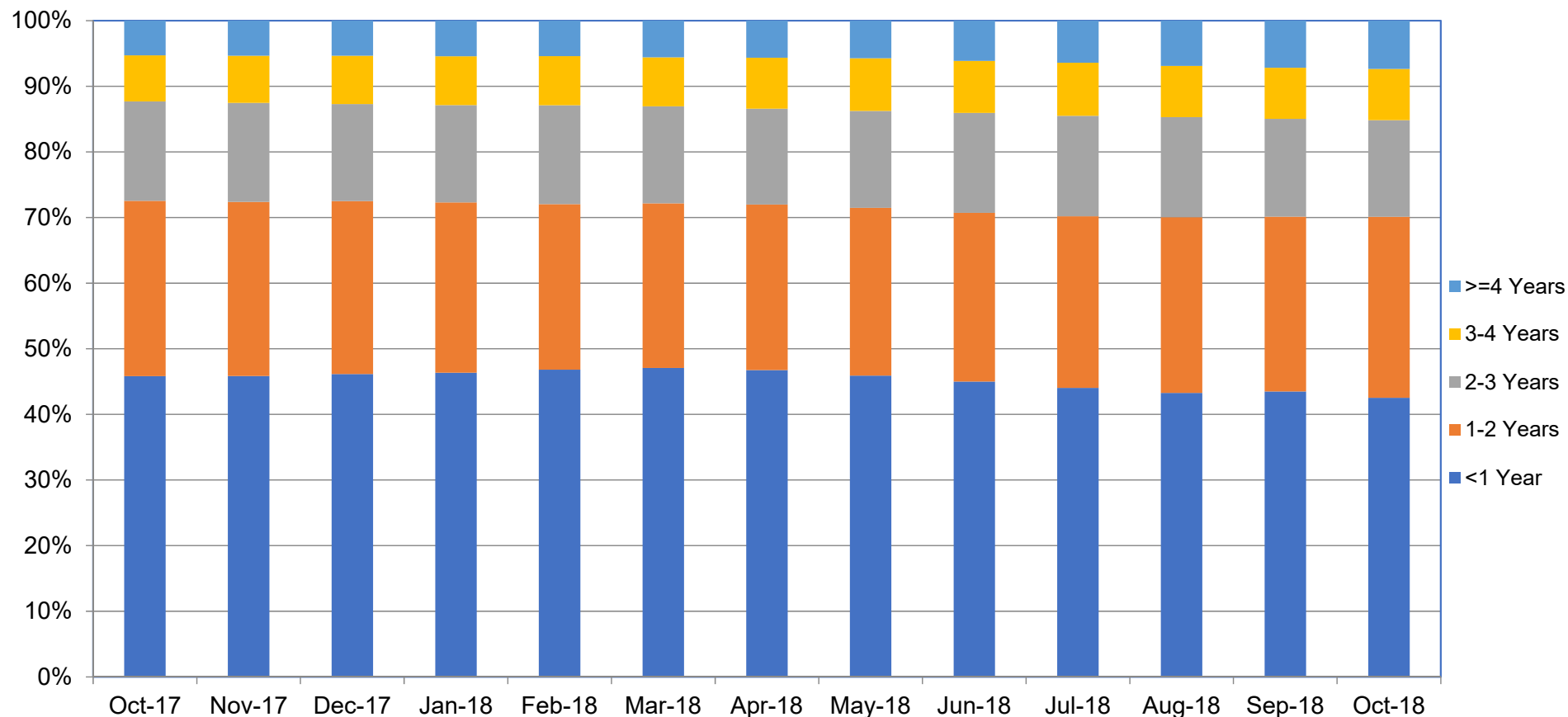


Oct-17	Nov-17	Dec-17	Jan-18	Feb-18	Mar-18	Apr-18	May-18	Jun-18	Jul-18	Aug-18	Sep-18	Oct-18
71	33	31	48	63	59	59	51	31	36	50	40	41
8.9%	5.3%	4.2%	6.3%	7.5%	6.4%	9.5%	8.7%	5.8%	6.8%	6.8%	5.9%	8.1%

Outcome VIII: Foster Care Re-Entries (October 2017 – October 2018)

DIVISION OF FAMILY & CHILDREN SERVICES

What percentage of foster children have been in care for less than a year, less than 2 years . . . each month?

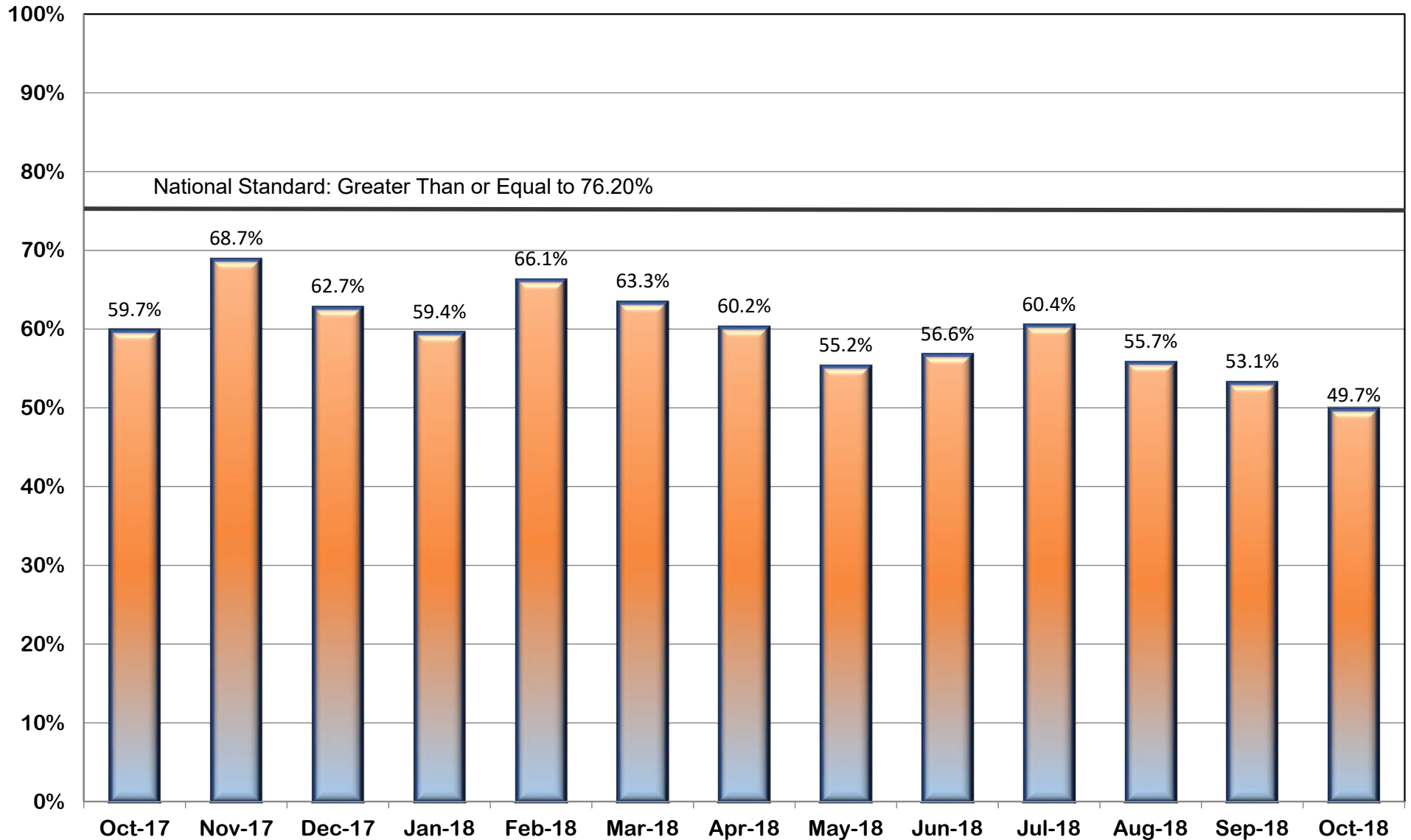


	Oct-17	Nov-17	Dec-17	Jan-18	Feb-18	Mar-18	Apr-18	May-18	Jun-18	Jul-18	Aug-18	Sep-18	Oct-18
>=4 Years	5.3%	5.3%	5.4%	5.4%	5.4%	5.6%	5.7%	5.7%	6.1%	6.4%	6.9%	7.2%	7.4%
3 - <4 Years	7.0%	7.2%	7.3%	7.4%	7.5%	7.4%	7.8%	8.0%	7.9%	8.1%	7.8%	7.8%	7.8%
2 - <3 Years	15.1%	15.1%	14.8%	14.8%	15.1%	14.8%	14.6%	14.8%	15.2%	15.3%	15.3%	14.9%	14.7%
1 - <2 Years	26.7%	26.5%	26.4%	26.0%	25.2%	25.1%	25.2%	25.6%	25.7%	26.2%	26.8%	26.6%	27.6%
<1 Year	45.8%	45.8%	46.1%	46.3%	46.8%	47.1%	46.7%	45.9%	45.0%	44.0%	43.3%	43.5%	42.5%

Outcome IX: Foster Care Length of Stay (October 2017 – October 2018)

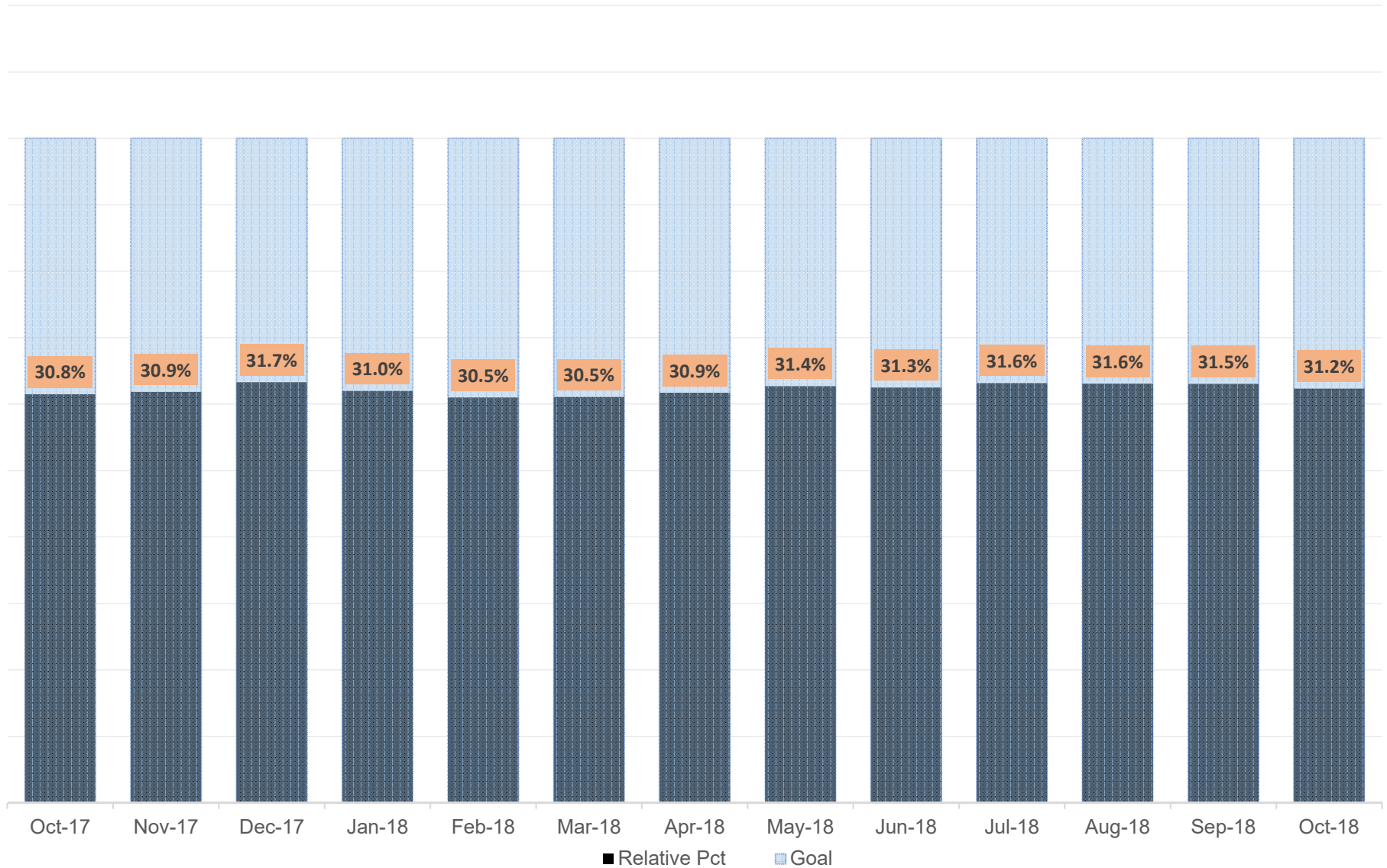
DIVISION OF FAMILY & CHILDREN SERVICES

What percentage of reunifications occurred within twelve (12) months of the child entering foster care?



Outcome X: Length of Time to Reunification (October 2017 – October 2018)

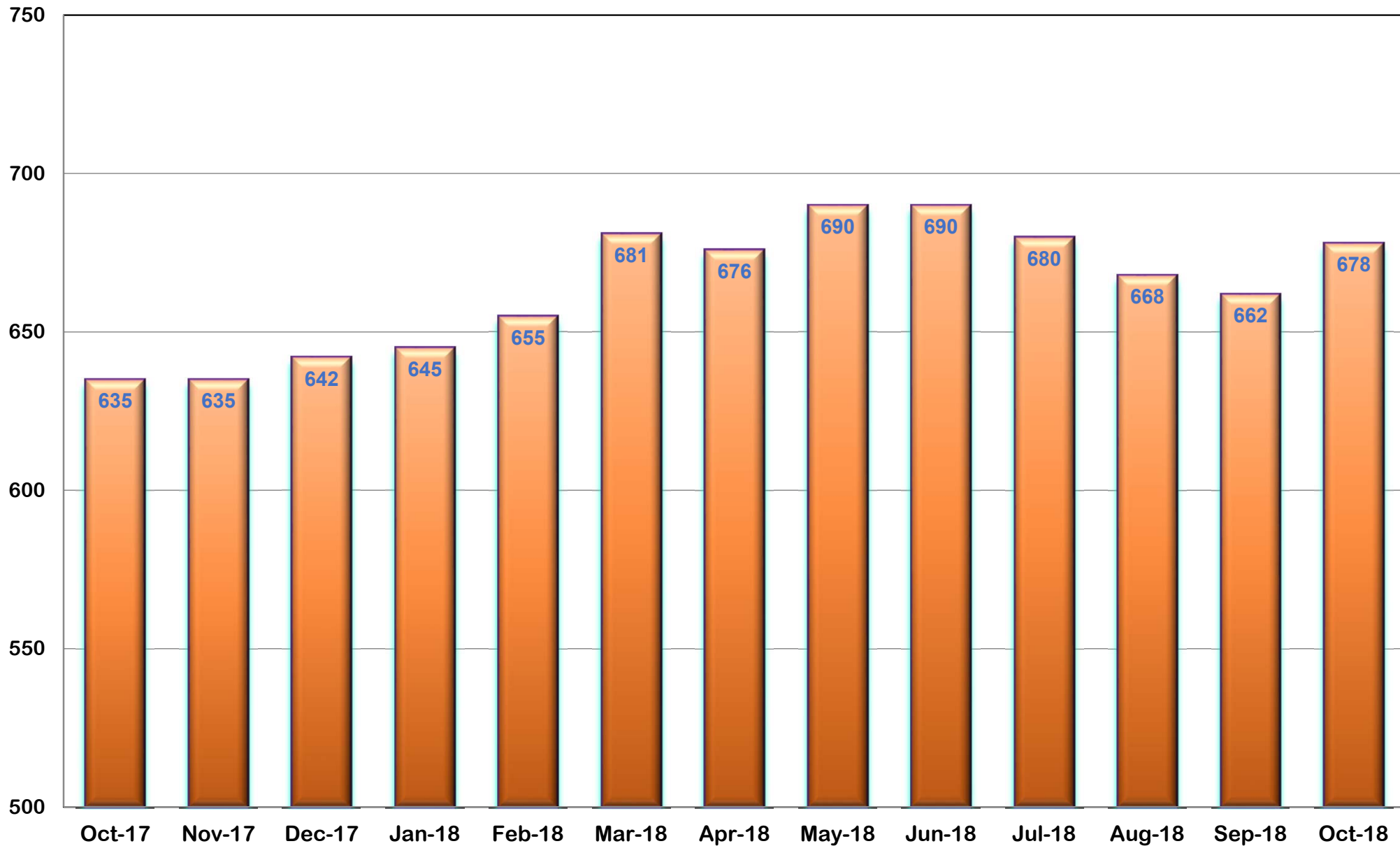
What percentage of children in Foster Care were placed with a relative during the month?



Outcome XI: Percent of Children Placed with Relatives (October 2017 – October 2018)

DIVISION OF FAMILY & CHILDREN SERVICES

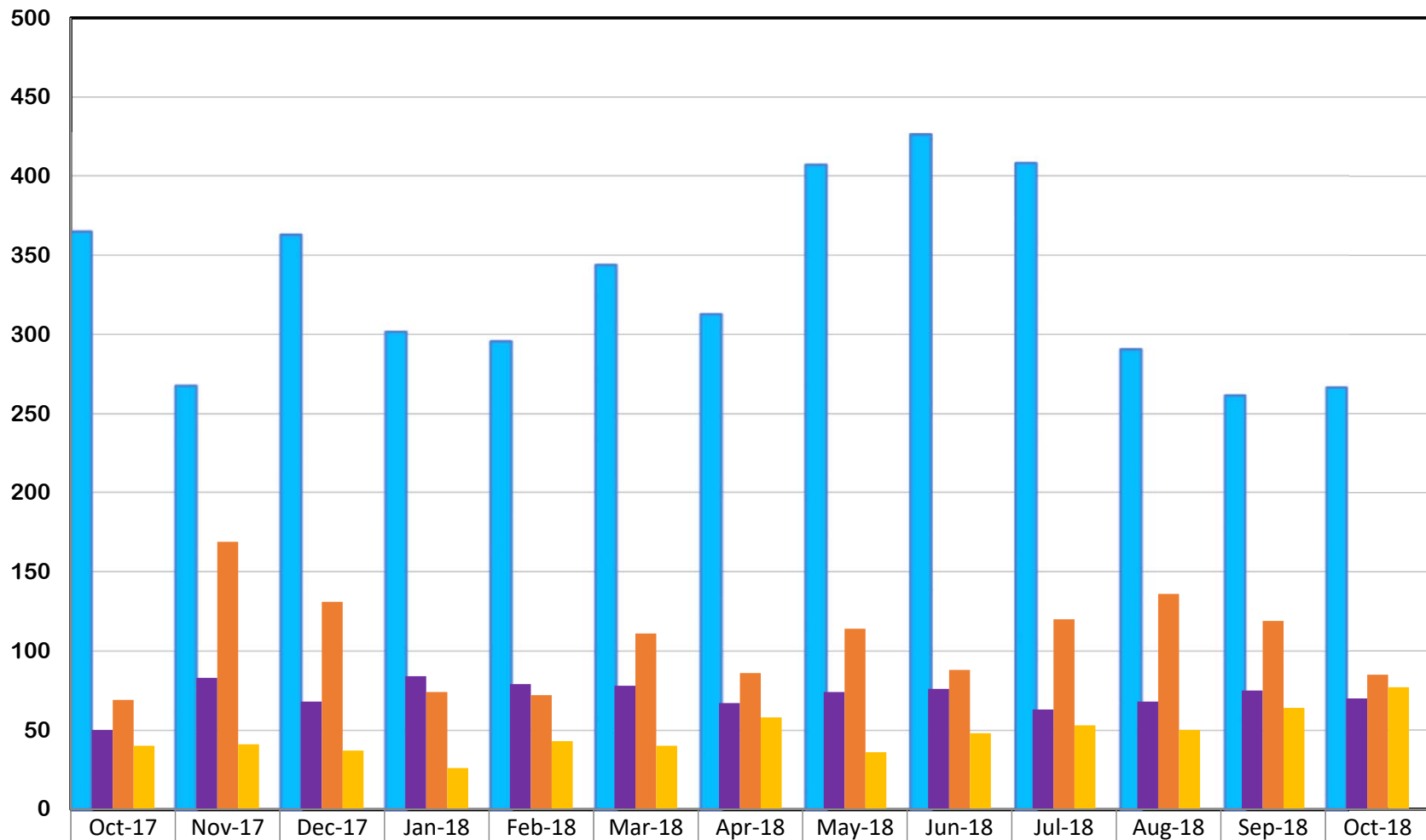
How many children remained in Foster Care after the age of 18?



Outcome XII: Extended Youth Services (October 2017 – October 2018)

DIVISION OF FAMILY & CHILDREN SERVICES

How many children in Foster Care were discharged to a positive permanency during the month?

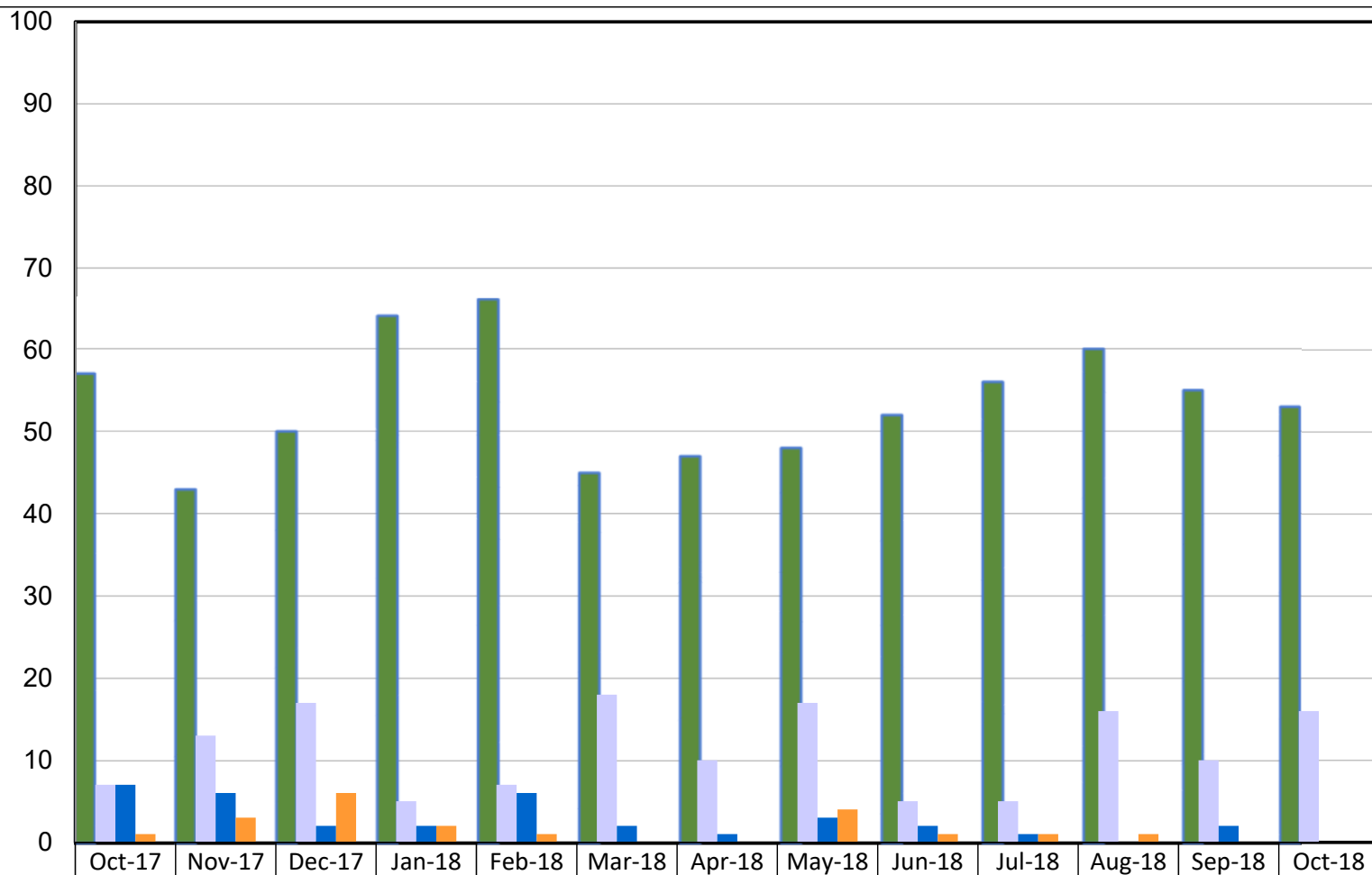


	Oct-17	Nov-17	Dec-17	Jan-18	Feb-18	Mar-18	Apr-18	May-18	Jun-18	Jul-18	Aug-18	Sep-18	Oct-18
Reunification	365	268	363	302	296	344	313	407	426	408	291	262	267
Living With Other Relative(s)	50	83	68	84	79	78	67	74	76	63	68	75	70
Finalized Adoption	69	169	131	74	72	111	86	114	88	120	136	119	85
Guardianship	40	41	37	26	43	40	58	36	48	53	50	64	77
Positive Permanency	524	561	599	486	490	573	524	631	638	644	545	520	499

Outcome XIII: Number of Discharges (October 2017 – October 2018)

DIVISION OF FAMILY & CHILDREN SERVICES

How many children in Foster Care were discharged to another permanency during the month?

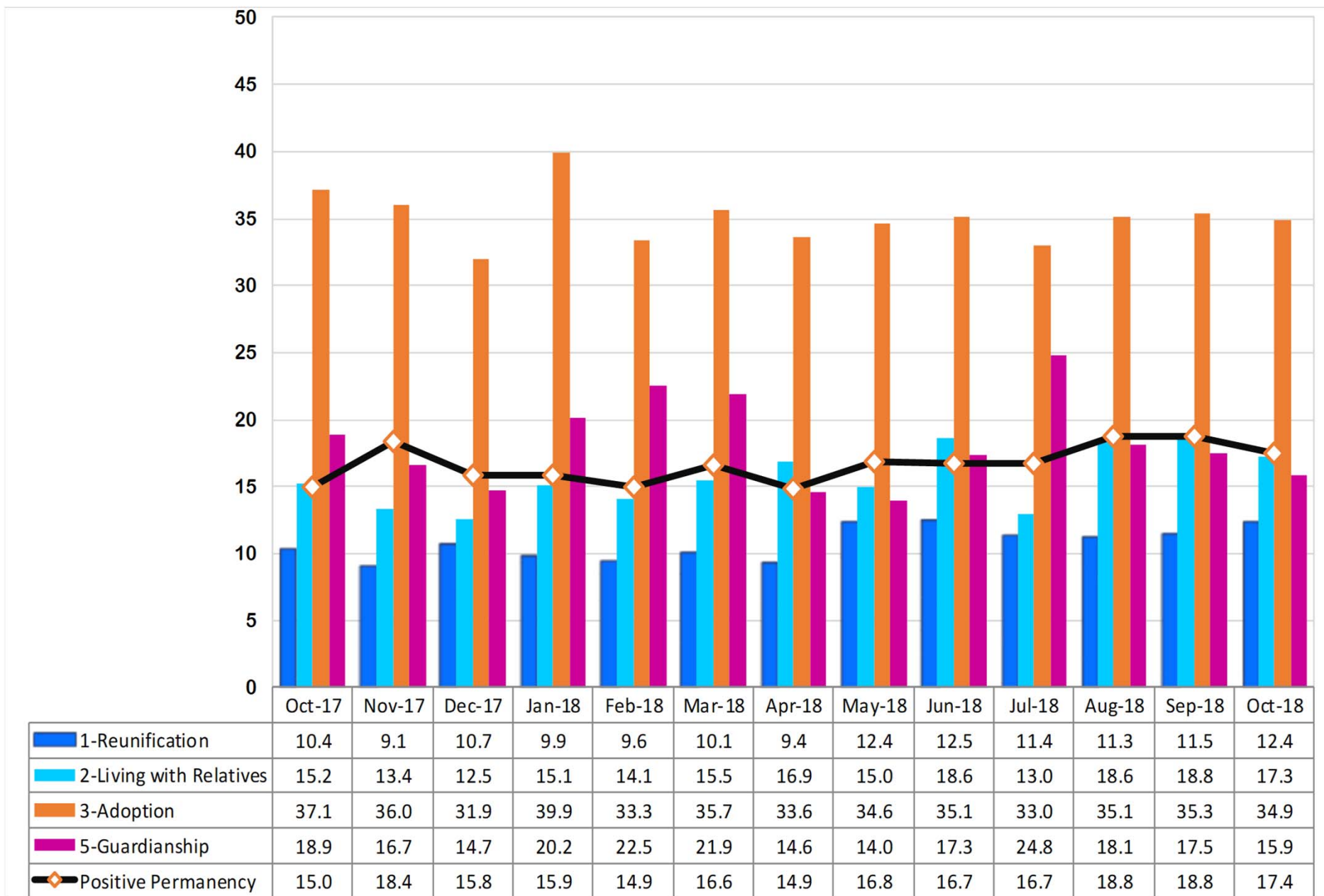


	Oct-17	Nov-17	Dec-17	Jan-18	Feb-18	Mar-18	Apr-18	May-18	Jun-18	Jul-18	Aug-18	Sep-18	Oct-18
Emancipation	57	43	50	64	66	45	47	48	52	56	60	55	53
Transfer to Another Agency	7	13	17	5	7	18	10	17	5	5	16	10	16
Runaway	7	6	2	2	6	2	1	3	2	1	0	2	0
Death of Child	1	3	6	2	1	0	0	4	1	1	1	0	0
Other Permanency	72	65	75	73	80	65	58	72	60	63	77	67	69

Outcome XIII: Number of Discharges (October 2017 – October 2018)

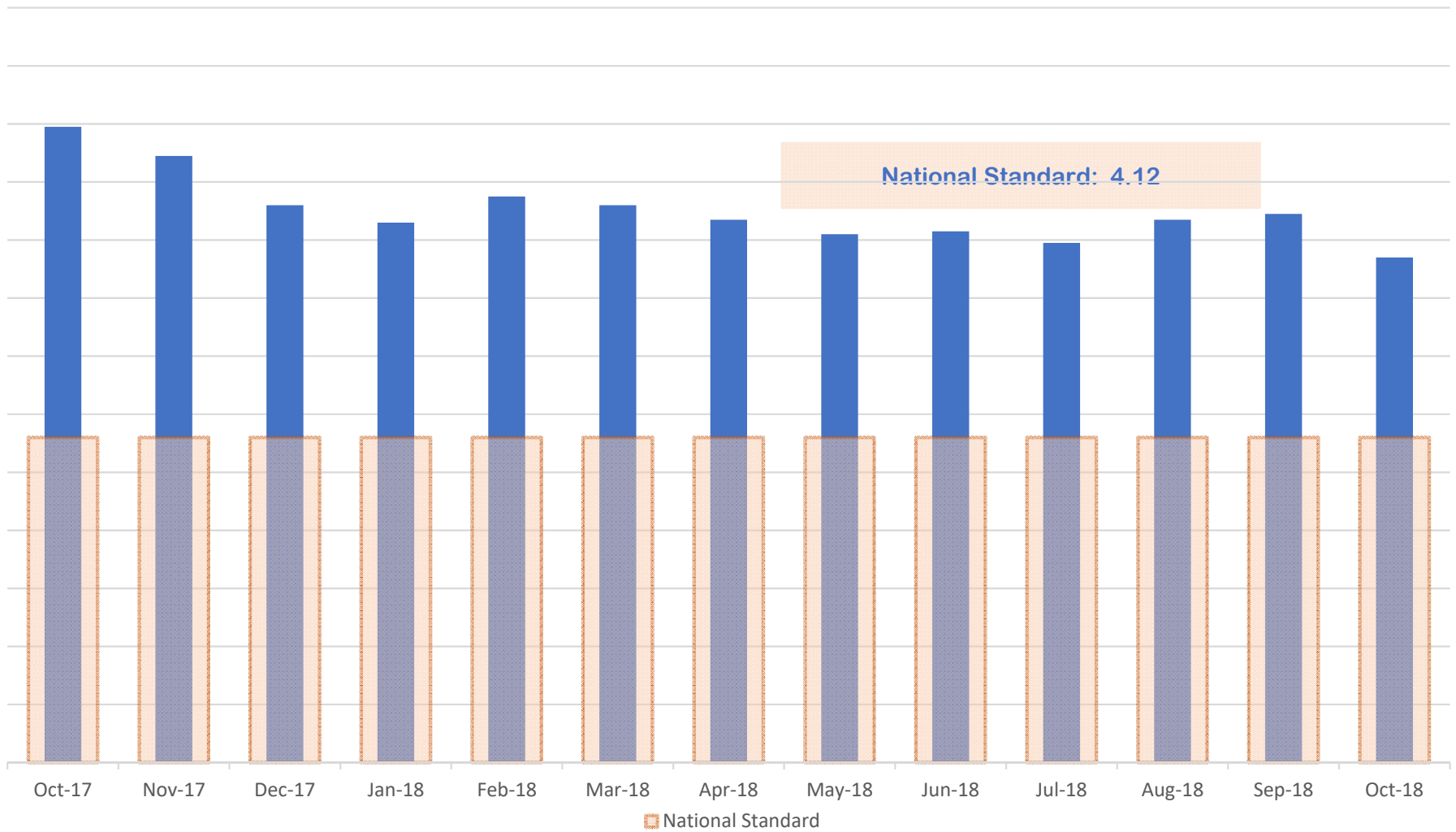
DIVISION OF FAMILY & CHILDREN SERVICES

What is the average time in months for a foster child to reach positive permanency?



Outcome XIII - A: Number of Discharges (October 2017 – October 2018)

How is the state of Georgia performing on the federal measure of Placement Stability?



Oct-17	Nov-17	Dec-17	Jan-18	Feb-18	Mar-18	Apr-18	May-18	Jun-18	Jul-18	Aug-18	Sep-18	Oct-18
5.19	5.09	4.92	4.86	4.95	4.92	4.87	4.82	4.83	4.79	4.87	4.89	4.74

Outcome XIV: Placement Stability Performance Measure (October 2017 – October 2018)

Appendices

APPENDIX A

Regional Chart of Outcome VI

**Children in DFCS Custody Under the Age of 18
(October 2017 – October 2018)**

DIVISION OF FAMILY & CHILDREN SERVICES

Outcome VI: Children in DFCS Custody Under the Age of 18 (By Region) (October 2017 – October 2018)

Region	Oct-17	Nov-17	Dec-17	Jan-18	Feb-18	Mar-18	Apr-18	May-18	Jun-18	Jul-18	Aug-18	Sep-18	Oct-18
1	1,378	1,379	1,420	1,437	1,460	1,518	1,528	1,498	1,473	1,428	1,452	1,489	1,482
2	832	867	878	879	922	975	979	990	983	1,011	1,003	1,004	989
3	1,004	988	995	974	985	983	971	956	962	955	962	986	1,006
4	1,127	1,127	1,145	1,124	1,124	1,143	1,141	1,163	1,164	1,133	1,120	1,103	1,105
5	1,147	1,177	1,163	1,156	1,190	1,208	1,224	1,225	1,200	1,182	1,191	1,205	1,198
6	744	767	761	760	773	776	770	766	743	732	732	719	709
7	539	560	581	612	652	697	717	714	720	732	757	772	757
8	708	702	714	723	741	744	745	749	749	760	768	767	771
9	591	578	577	579	589	592	590	590	577	574	568	563	543
10	753	759	785	791	778	772	776	760	757	751	754	771	772
11	1,192	1,167	1,194	1,193	1,219	1,265	1,261	1,261	1,251	1,257	1,252	1,251	1,242
12	923	933	928	959	976	1,005	1,000	1,013	1,003	982	982	978	980
13	1,451	1,416	1,402	1,410	1,430	1,485	1,451	1,464	1,404	1,375	1,359	1,343	1,336
14	1,600	1,600	1,582	1,614	1,650	1,677	1,673	1,680	1,674	1,621	1,622	1,631	1,612
Statewide	13,989	14,020	14,125	14,211	14,489	14,840	14,826	14,829	14,660	14,493	14,522	14,582	14,502

APPENDIX B

Regional Chart of Outcome XIV

**Placement Stability Performance Coefficient
(October 2017 – October 2018)**

National Standard = 4.12

Desired Goal to Meet the PIP = 6.01

DIVISION OF FAMILY & CHILDREN SERVICES

Outcome VI: Placement Stability for Children in DFCS Custody Under the Age of 18 (By Region) (October 2017 – October 2018)

Region	Oct-17	Nov-17	Dec-17	Jan-18	Feb-18	Mar-18	Apr-18	May-18	Jun-18	Jul-18	Aug-18	Sep-18	Oct-18
1	5.77	5.82	5.77	5.66	5.84	5.68	5.71	5.59	5.51	5.37	5.42	5.64	5.38
2	5.85	5.62	5.24	5.41	5.63	5.8	5.73	5.58	5.54	5.41	5.44	5.19	4.96
3	4.82	4.73	4.61	4.73	4.86	4.86	5	5.01	4.79	5.05	4.89	4.75	4.68
4	4.55	4.77	4.62	4.31	4.36	4.4	3.87	3.75	3.61	3.57	3.55	3.44	3.42
5	5.59	5.45	5.48	5.36	5.23	5.28	5.26	5.49	5.51	5.47	5.47	5.38	5.34
6	4.2	4.07	3.74	3.93	3.91	4.01	4.08	3.82	4.06	4.1	4.33	4.62	4.27
7	3.36	3.41	3.16	2.84	3.02	2.94	3.06	3.14	3.17	3.22	3.35	3.4	3.1
8	3.49	3.51	3.32	3.1	2.97	2.92	2.73	2.96	3.11	3.08	3.72	3.9	3.76
9	3.51	3.32	3.43	3.53	3.82	3.61	3.5	3.09	3.48	3.89	3.97	3.83	3.8
10	4.08	3.95	4.06	3.94	4.12	3.82	3.46	3.34	3.07	3.09	2.89	2.81	2.89
11	4.18	3.93	3.77	3.62	3.88	4.21	4.28	4.21	4.27	4.23	4.22	4.23	4.02
12	4.82	4.99	4.99	5.13	5.17	5.04	4.7	4.61	4.66	4.65	4.59	4.88	4.88
13	7.38	7.15	6.73	6.65	6.73	6.44	6.47	6.45	6.49	6.3	6.67	6.64	6.46
14	6.24	6.01	5.8	5.81	5.83	5.95	6.22	6.25	6.36	6.18	6.38	6.36	6.22
Statewide	5.19	5.09	4.92	4.86	4.95	4.92	4.87	4.82	4.83	4.79	4.87	4.89	4.74