

# Monthly Measures and Results for October 2018\*

\*(Reflects Safety Outcomes as of August 31, 2018 And  
Permanency Outcomes as of September 30, 2018)  
With Appendices

This report is produced by the Data Unit. For questions or comments, you may contact one of the following:  
Samantha Adams, Director (Samantha.Adams@dhs.ga.gov)  
John Roach, Unit Manager (John.Roach@dhs.ga.gov)  
Vickie Fluellen, Operations Analyst 3 (Vickie.Fluellen@dhs.ga.gov)

- Part I: Definitions And Data Sources contained in Report**
- Part II: Safety Outcomes**
- Part III: Permanency/Well-being Outcomes**
- Part IV: Appendices**
  - A. Regional Charts of Outcome V (Trend of Unique Children in the Legal Custody of DFCS Under the Age of 18)**
  - B. Regional Charts of Outcome XIV: Stability Performance Coefficient (Number of Moves/Number of Days in Custody \* 1000)**

\*\*\*There are no revisions to this document to date.

**SAFETY: Children are first and foremost, protected from abuse and neglect.**

**Outcome I: Child Protective Services Cases**

Count of unique CPS Investigations and Family Preservation (Ongoing) stages open at any point during the month vs. Average count of unique CPS Investigations, Family Preservation, and Family Support stages for the prior four state fiscal years. Outcome is calculated 45 days prior to the date of report.

Outcome 1A: Family Support Cases Only: Count of unique Family Support stages open at any point during the month vs average of four prior state fiscal years..

Outcome 1B: Family Preservation Cases Only: Count of unique Family Preservation stages open at any point during the month vs average of four prior state fiscal years..

Outcome 1C: Investigation Cases Only: Count of unique Investigation stages open at any point during the month vs average of four prior state fiscal years.

Outcome 1C\_1: Comparison of Investigations that were open at anytime during the month vs investigations opened during the month vs the average of the prior state fiscal years at any point in time.

Sources: SHINES

**Outcome II: Recurrence of Substantiated Child Maltreatment**

Of all the children who were victims of substantiated maltreatment in the first 6 months of the year, the percentage that had substantiated maltreatment within the following 6 months. Outcome is calculated 45 days prior to the date of report. Each month is calculated as a rolling calendar year. *National Standard: less than or equal to 5.40%*

Source: SHINES

**Outcome III: Disposition of Child Abuse and Neglect Reports**

Chart reflects the disposition of reports received in a particular month. Data includes count of Family Support, Investigations -- Substantiated Investigations and Unsubstantiated Investigations, and Screen-outs. Outcome is calculated 45 days prior to the date of report.

Source: SHINES

**PERMANENCY:** Children have permanency and stability in their living situations.

## **Outcome IV: Subsequent Case-type of Investigations by Disposition**

Chart reflects the disposition of investigations received in a particular month by the subsequent case type. Charts are broken out by substantiated and unsubstantiated investigation and their subsequent track assignment or final disposition. Outcome is calculated 45 days prior to the date of report.

Source: SHINES

## **Outcome V: Number of Child Placement Services Cases**

Count of unique children who were involved in an open Foster Care or Adoption stage during the month. In placement services each child who is the principal (PC) is considered a case. The chart also reveals the average of the last four state fiscal years to provide the viewer with a prior glimpse of the trend in placement cases.

Source: SHINES

## **Outcome VI: Children in the Legal Custody of DFCS Under the Age of 18**

Count of unique children who were in the legal custody of DFCS (17 years of age and under) at some point during the month.

Source: SHINES

Outcome VI-A: Age Distribution of Children in Custody: Chart is a percentage of children in DFCS Custody by age group.

## **Outcome VII: Comparison of Foster Care Entries & Exits**

Number of children who have entered foster care and number of children who have exited foster care during the month. Total children at end of month show the number of children on the last day of the month.

Source: SHINES

## **Outcome VIII: Foster Care Re-entries**

Of all the children who entered foster care, the percentage that were discharged from a prior episode of foster care within 12 months of the current foster care placement. National Standard: less than or equal to 8.60%.

Source: SHINES

**PERMANENCY cont'd:** Children have permanency and stability in their living situations.

**Outcome IX: Foster Care Length of Stay**

Percentage of children by number of months in foster care during each month.

Source: SHINES

**Outcome X: Length of Time to Achieve Reunification**

Percentage of children who exited care during the month through reunification with their family that reunified in less than 12 months from the date of their removal. National Standard: greater than or equal to 76.20%

Source: SHINES

**Outcome XI: Children Placed with Relatives**

Of all children in DFCS custody, the percentage that are placed with a relative or a relative foster home.

State Target: greater than or equal to 30.00%

Source: SHINES

**Outcome XII: Extended Youth Services**

Number of children ages 18 – 21 who remained in the custody of DFCS beyond their birth month.

Source: SHINES

**Outcome XIII: Monthly Discharges**

The number of children who were discharged during the month by permanency decision divided into two charts by positive permanency vs other types.

Source: SHINES

**Outcome XIII - A: Average Number of Months to Achieve Positive Permanency**

Of all children in Outcome XIII, the number of months from removal (entry into foster care) until exit due to reunification, relative, adoption or guardianship..

Source: SHINES

**PERMANENCY cont'd:** Children have permanency and stability in their living situations.

**Outcome XIV: Placement Stability Performance (Number of Moves/Number of Days in Custody \* 1000)**

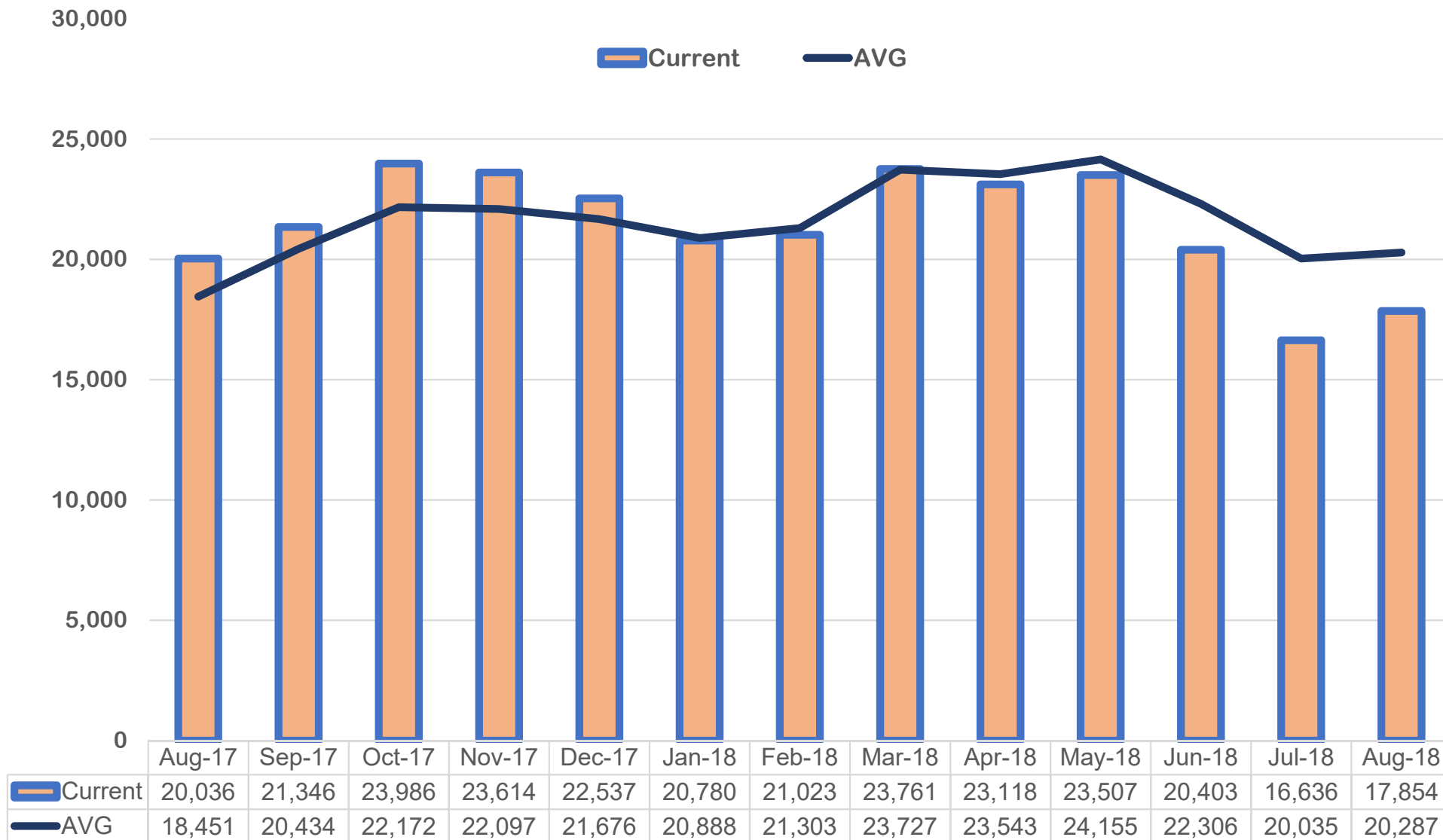
A calculated value based upon the ACF CFPS Round 3 which is part of Program Improvement. It is calculated from a rolling 12 month population of the entry cohort where the child remained in custody for over 8 days and was not 18 on the date of removal. The federal standard is 4.12.

Source: SHINES

*\*\*Note: Data may vary from month to month due to 13 month data trends being re-run over the time span for the various outcomes in this report.*

# DIVISION OF FAMILY & CHILDREN SERVICES

How many CPS Cases were open monthly during the last 13 months?

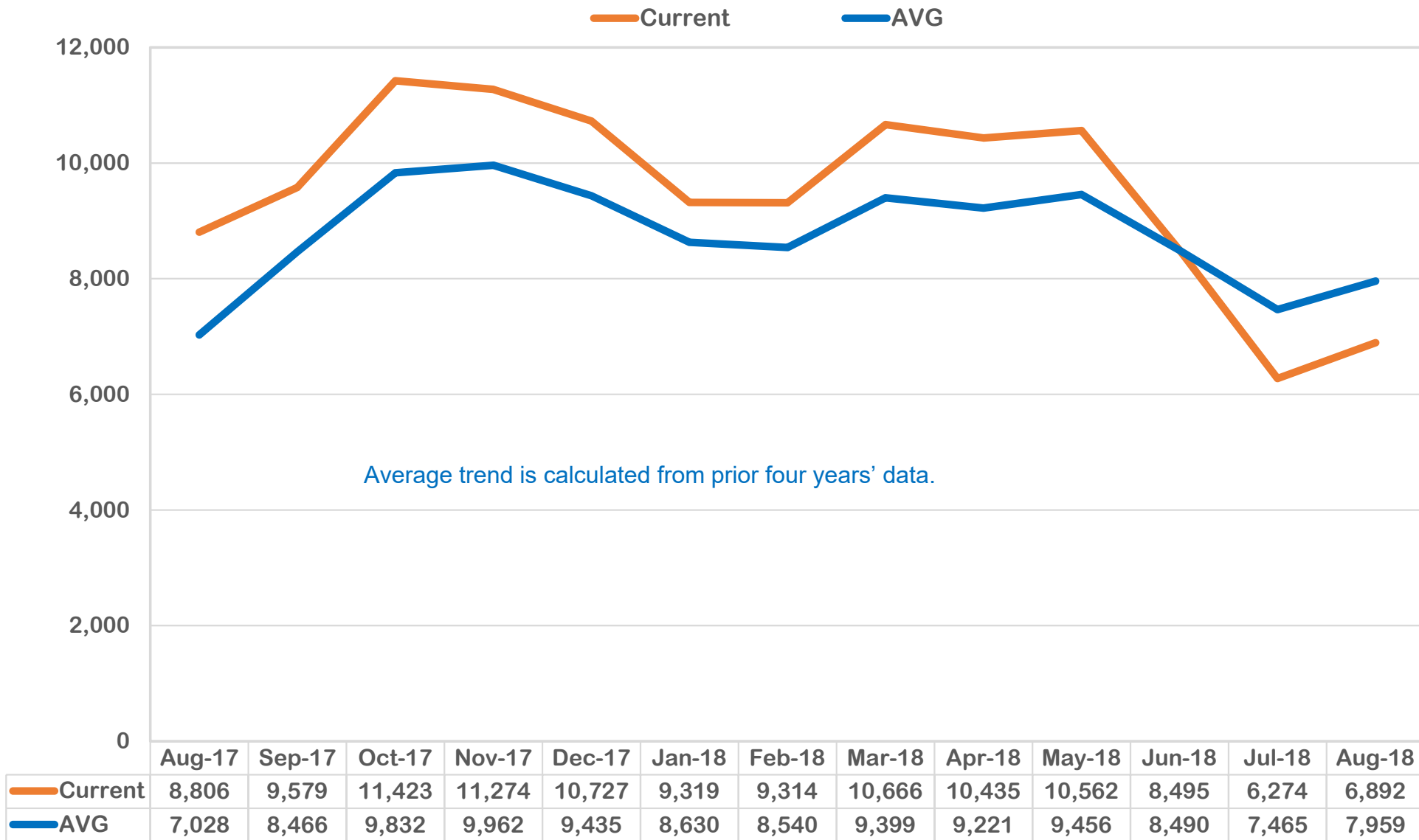


Average trend is calculated from prior SFYs from 2013-2017.

Average trend is calculated from prior four years.

**Outcome I: Child Protective Services Cases, (August 2017 – August 2018)**

### How many Family Support Cases were open per month for the last 13 months?



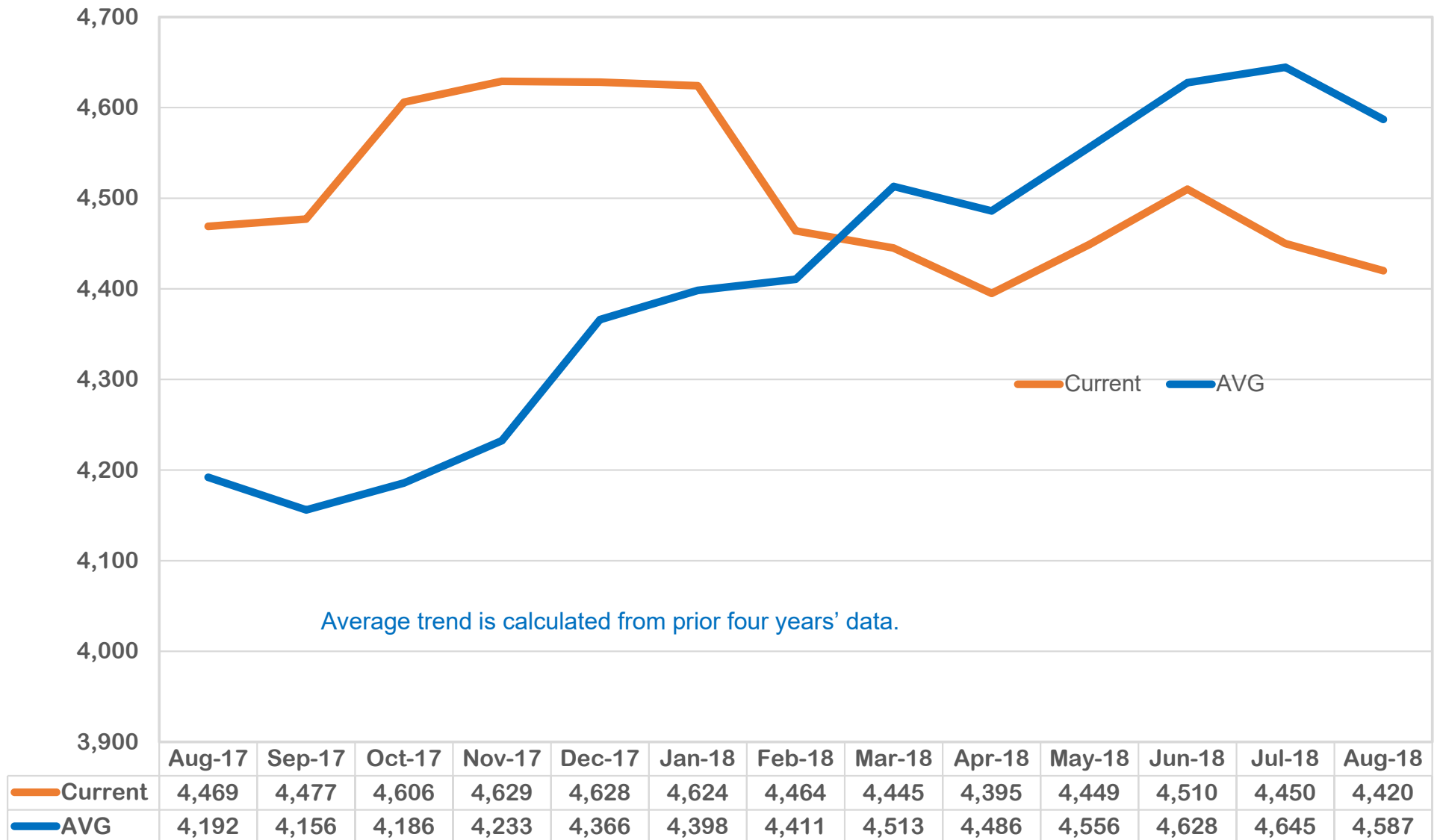
The graph above reveals a similar trend in the current 13-month trend compared to the average of the prior four years' average. During July 2018, there is a 16% decline in the number of cases when compared to the prior 4 year's averages. This was a 26% drop from the prior month of June 2018. August 2018 showed a rebound of 9.8% over the prior month.

**Outcome IA: Child Protective Services Cases Family Support Cases Only (August 2017 – August 2018)**



# DIVISION OF FAMILY & CHILDREN SERVICES

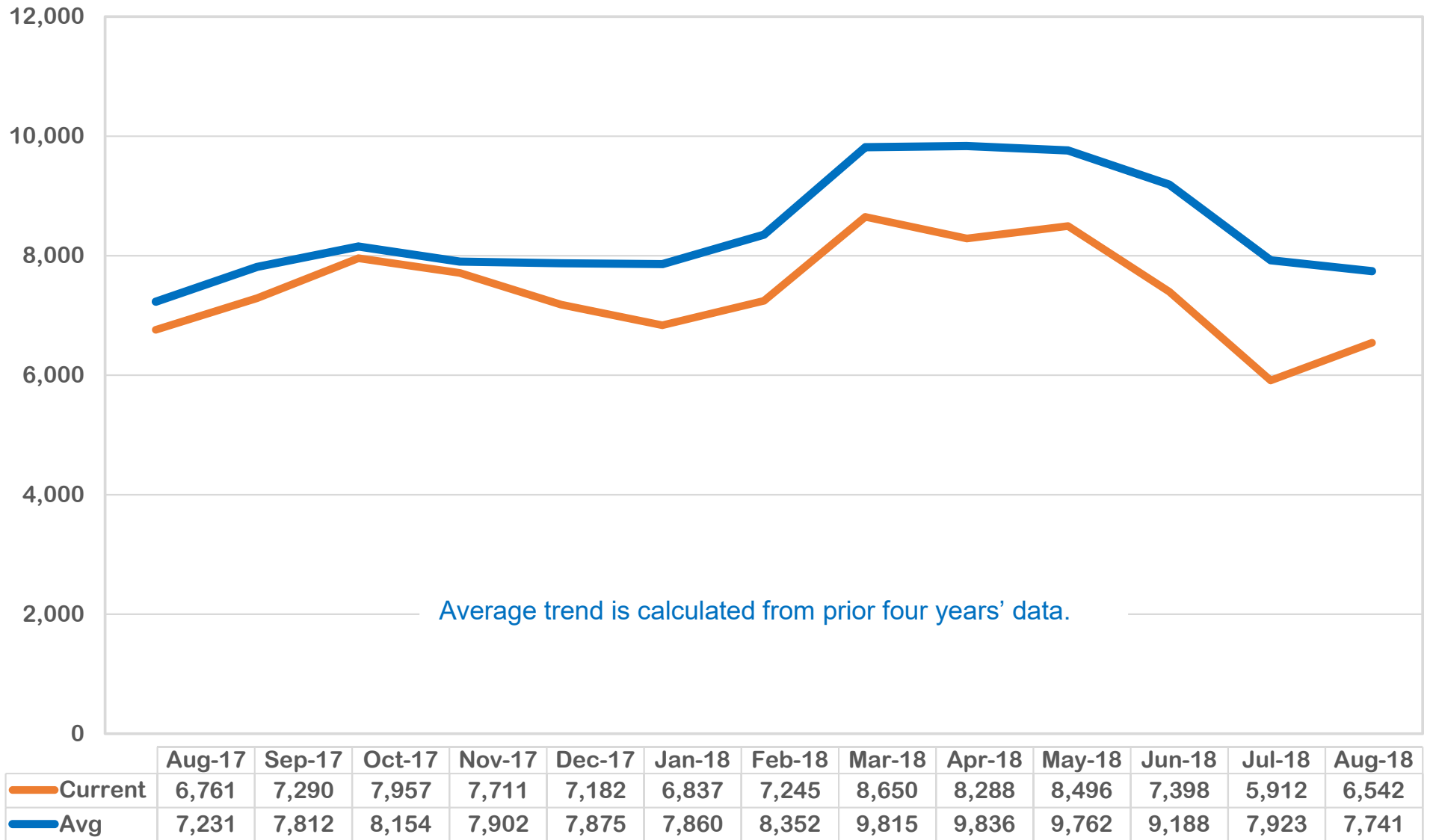
## How many Family Preservation Cases were open per month during for the last 13 months?



Family Preservation cases are higher than the average trend of the prior four years' average trend during the first 8 of the trend followed by an inverse effect. In August 2018 Family Preservation cases were 4% lower than the average of the last 4 years.

# DIVISION OF FAMILY & CHILDREN SERVICES

How many Investigation Cases were open per month for the past 13 months?

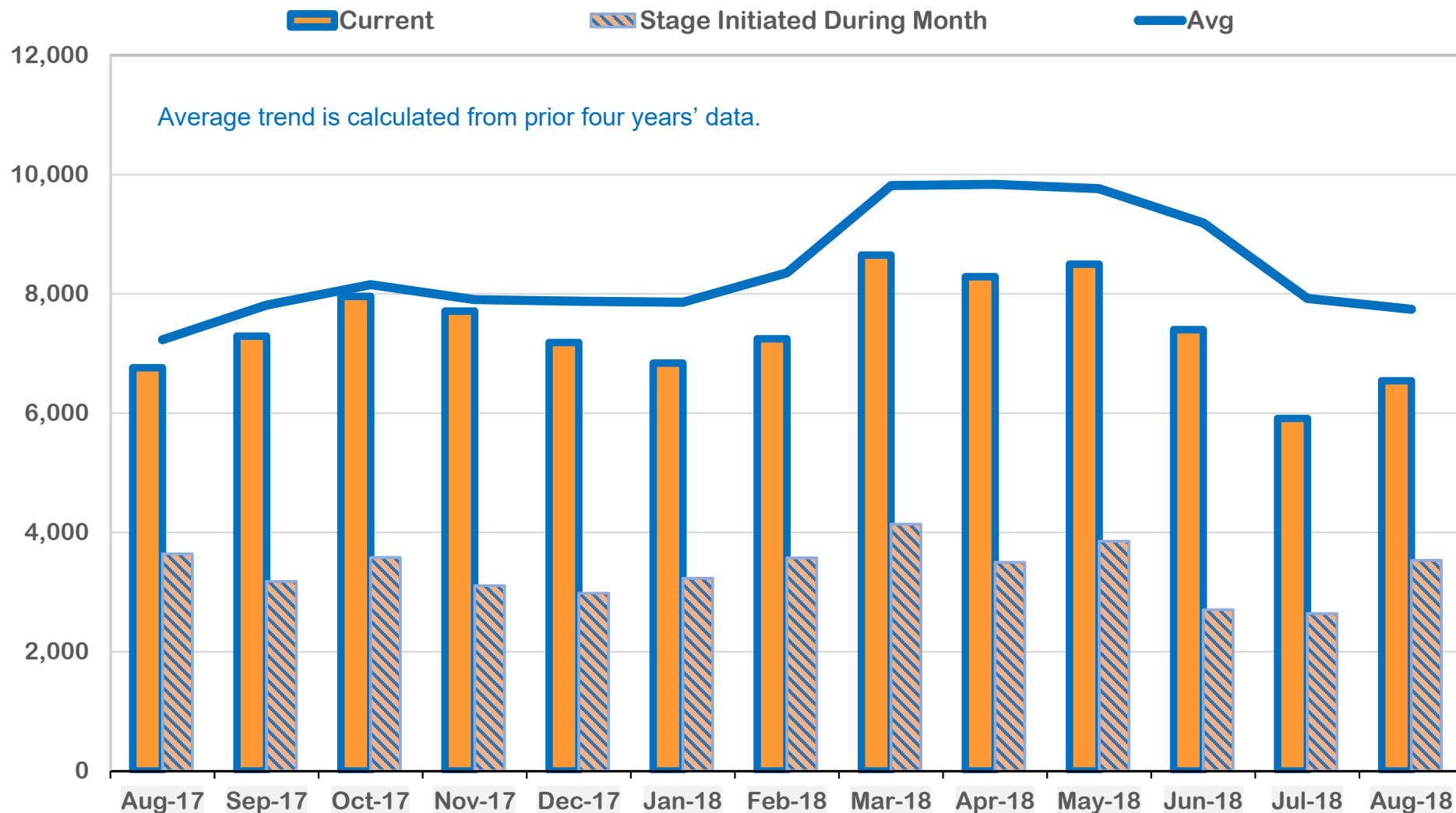


Although the last 13 months has seen an increase in investigations of over 25% between the averages of the prior 13 months (not pictured), the current year's total investigations reveals an improvement in investigations as indicated in the lower case loads.

Outcome IC: Child Protective Services Cases Investigation Cases Only (August 2017 – August 2018)

# DIVISION OF FAMILY & CHILDREN SERVICES

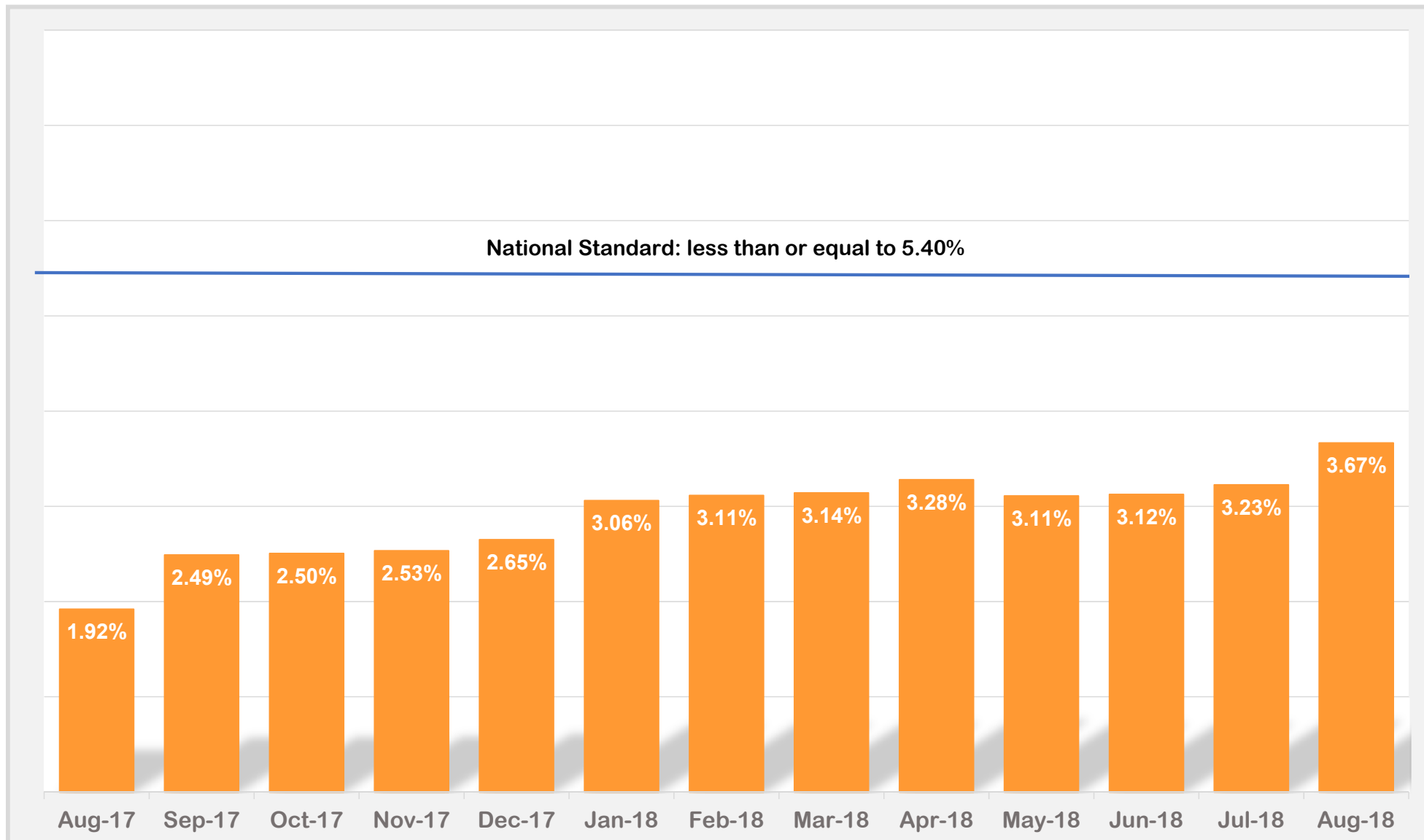
How many Investigation Cases were open at any time during the month Vs Investigation Cases that were initiated during the month for the past 13 months?



This chart indicates that during each month, the cases that are opened during the month are less than half of the overall open cases during the month. Additionally, the increases and decreases in those opened during the month resemble the trend in the current cases open during the month excluding Sep 2017.

Outcome IC\_1: Child Protective Services Cases Investigation Cases Only (August 2017 – August 2018)

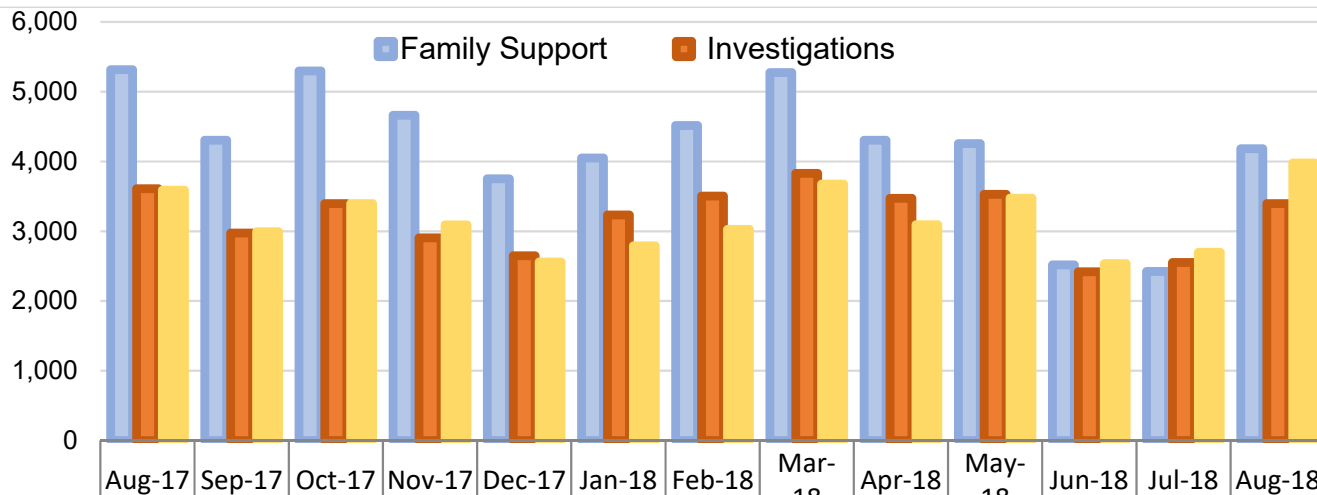
What percentage of children had a subsequent substantiated incident of maltreatment within 6



The trend reveals that Georgia has consistently maintained a low recurrence rate below the national standard of 5.4%. However, increases can be seen from October 2017 – April 2018. Georgia has a higher percentage of maltreatment in August 2018 as compared to August 2017.

# DIVISION OF FAMILY & CHILDREN SERVICES

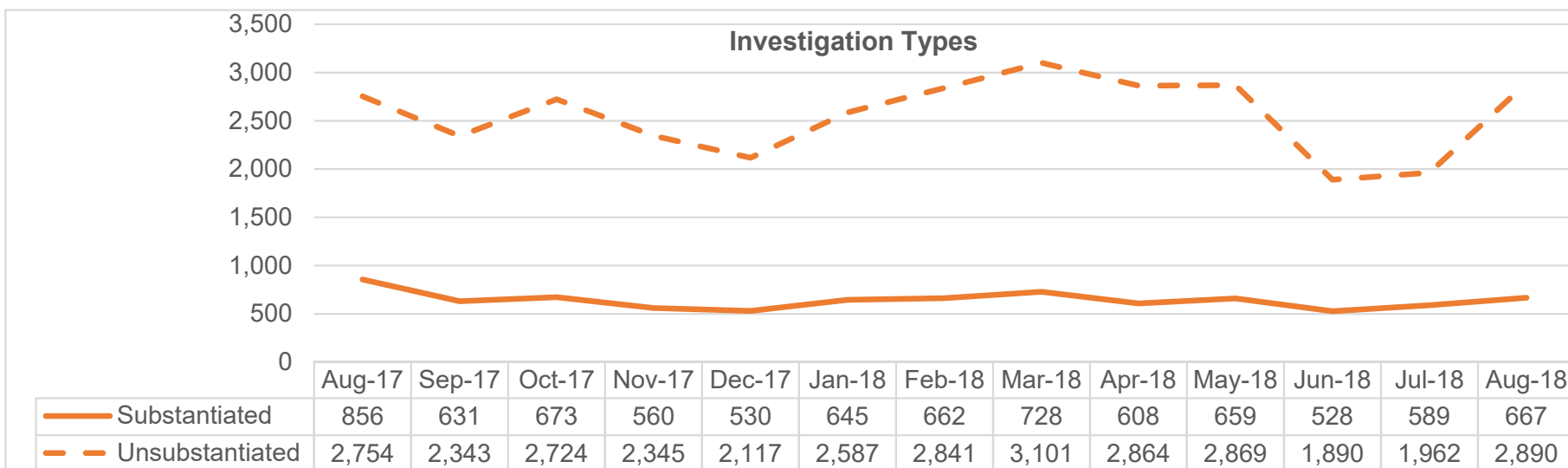
## What was the disposition of all CPS reports received during the month?



This chart reveals the disposition of CPS reports that were received for service. In July 2018, 28.5% were investigations, 36.6% were Family Support, and 34.9% were Screen Outs.

The lower graph shows how many investigations were substantiated and unsubstantiated.

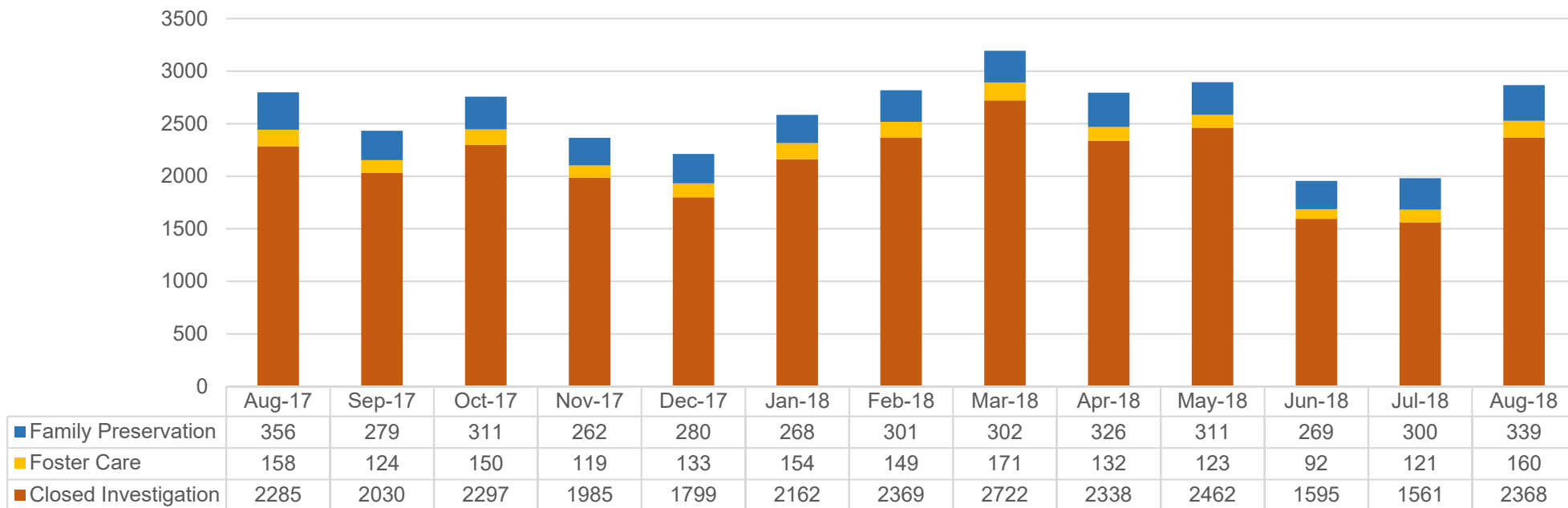
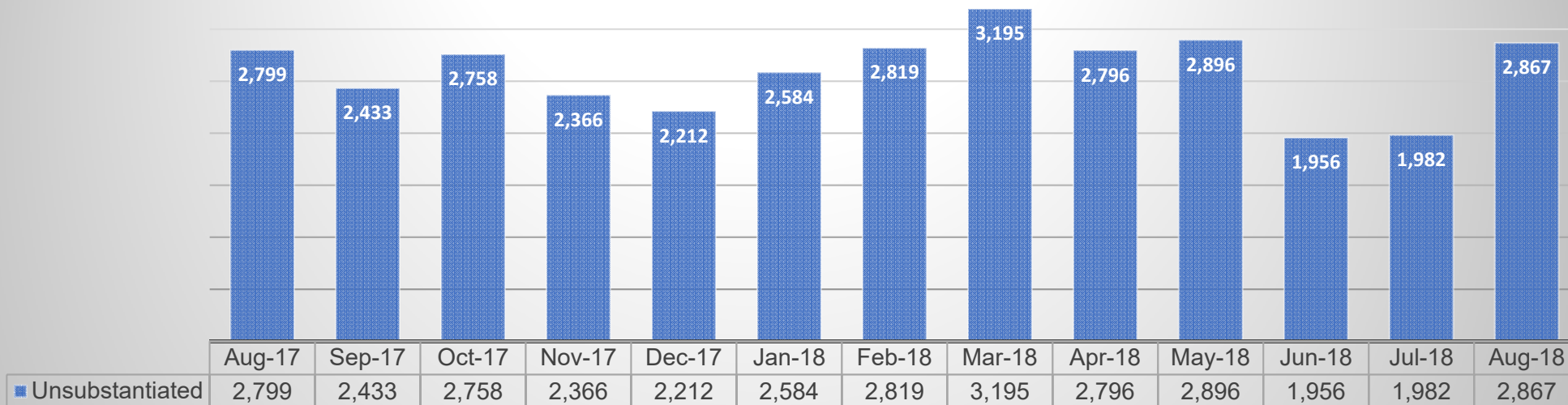
	Aug-17	Sep-17	Oct-17	Nov-17	Dec-17	Jan-18	Feb-18	Mar-18	Apr-18	May-18	Jun-18	Jul-18	Aug-18
Family Support	5,316	4,304	5,299	4,662	3,752	4,050	4,516	5,275	4,304	4,256	2,516	2,423	4,182
Investigations	3,610	2,974	3,397	2,905	2,647	3,232	3,503	3,829	3,472	3,528	2,418	2,551	3,396
Screenouts	3,588	2,993	3,397	3,091	2,559	2,791	3,026	3,676	3,093	3,473	2,536	2,698	3,978



What was the final disposition of closed investigations during the month?

# DIVISION OF FAMILY & CHILDREN SERVICES

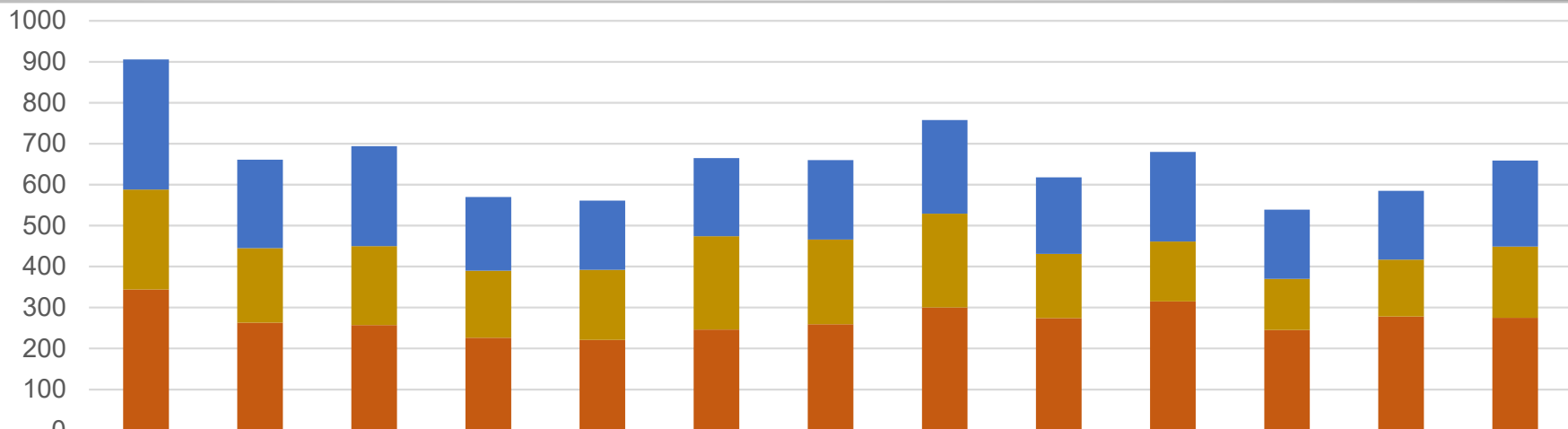
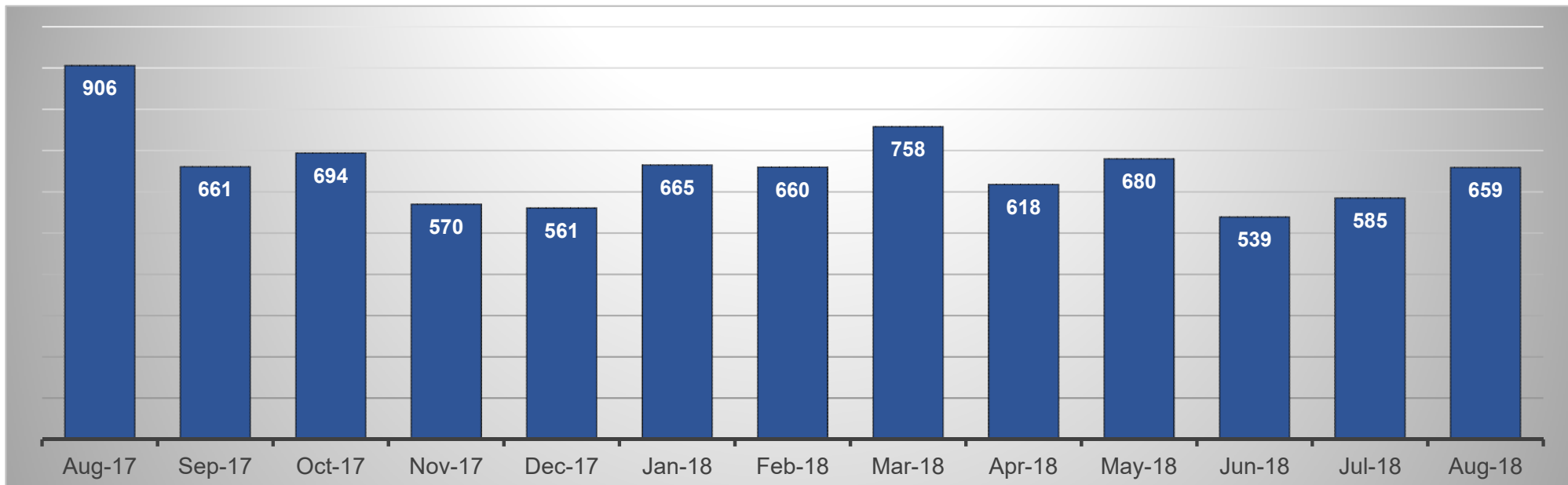
## Unsubstantiated



Outcome IV: Subsequent Case-Types of Investigations (August 2017 – August 2018)

# DIVISION OF FAMILY & CHILDREN SERVICES

## Substantiated:



■ Family Preservation  
■ Foster Care  
■ Closed Investigation

	Aug-17	Sep-17	Oct-17	Nov-17	Dec-17	Jan-18	Feb-18	Mar-18	Apr-18	May-18	Jun-18	Jul-18	Aug-18
Family Preservation	318	216	244	180	169	191	194	229	187	219	169	168	210
Foster Care	244	182	193	164	171	228	207	229	157	146	125	139	174
Closed Investigation	344	263	257	226	221	246	259	300	274	315	245	278	275

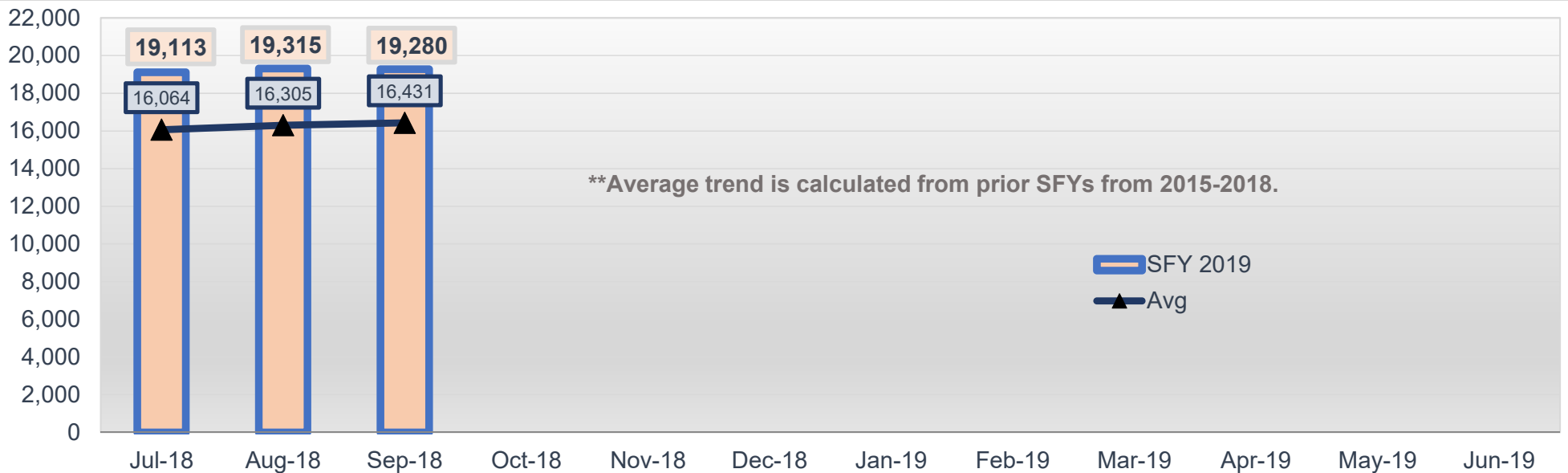
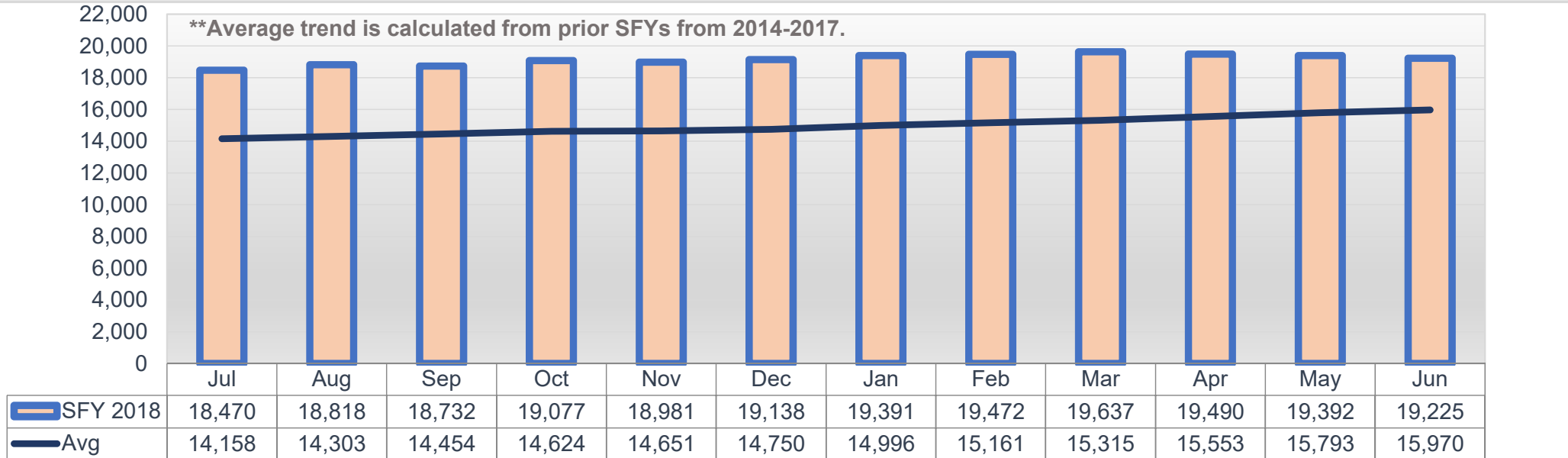
Outcome IV: Subsequent Case-Types of Investigations (August 2017 – August 2018)



# DIVISION OF FAMILY & CHILDREN SERVICES

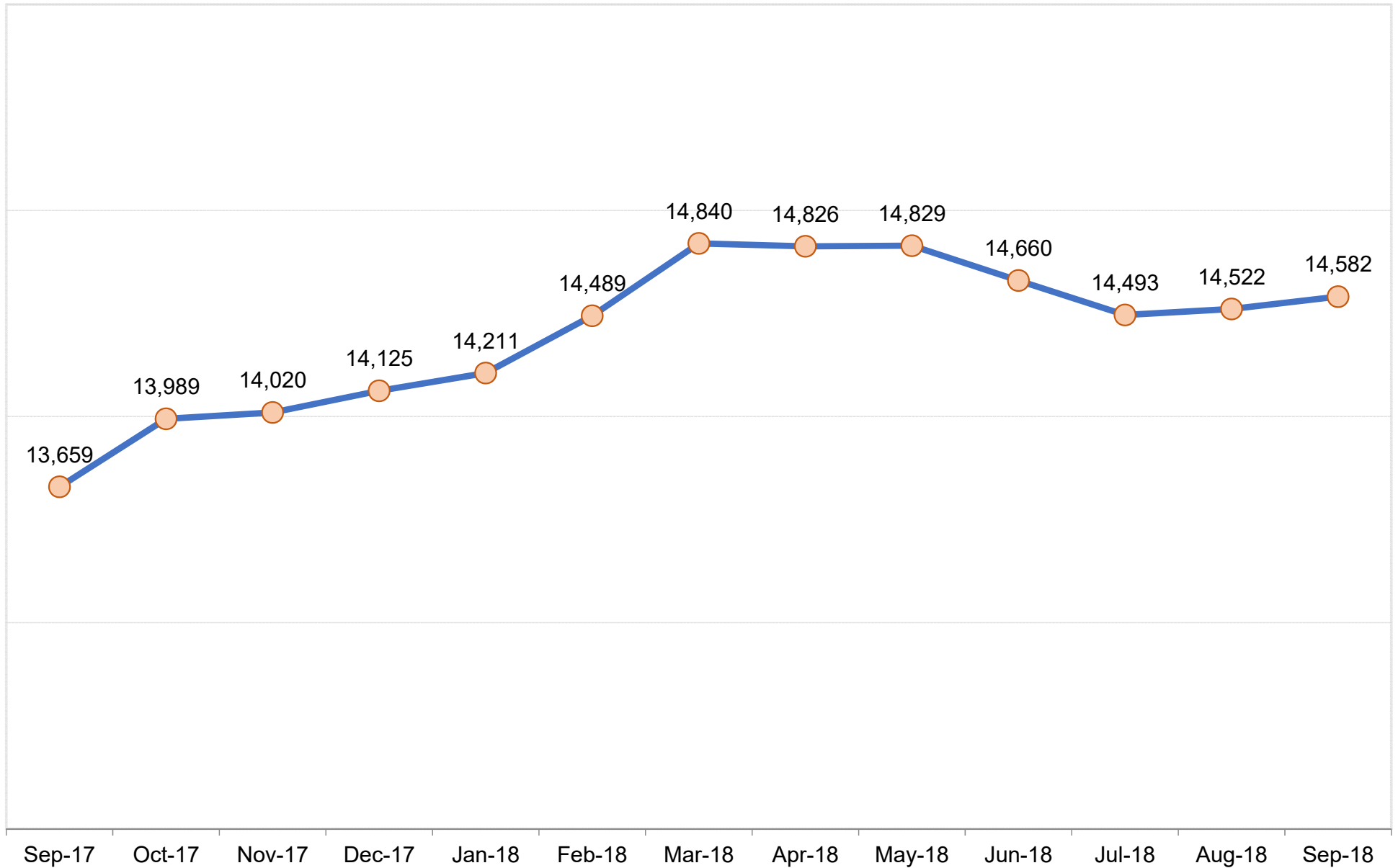
## How many children were involved placement services for each month during the State Fiscal Year?

The average trend for the past four years shows a gradual increase (low slope) in cases. The placement services include continued collaboration with families after out of home care may have ended as well as those who are in out of home care with DFCS Age 0 - 21.



**Outcome V: Number of Children in Placement Services (State Fiscal Year 2019 To Date)**

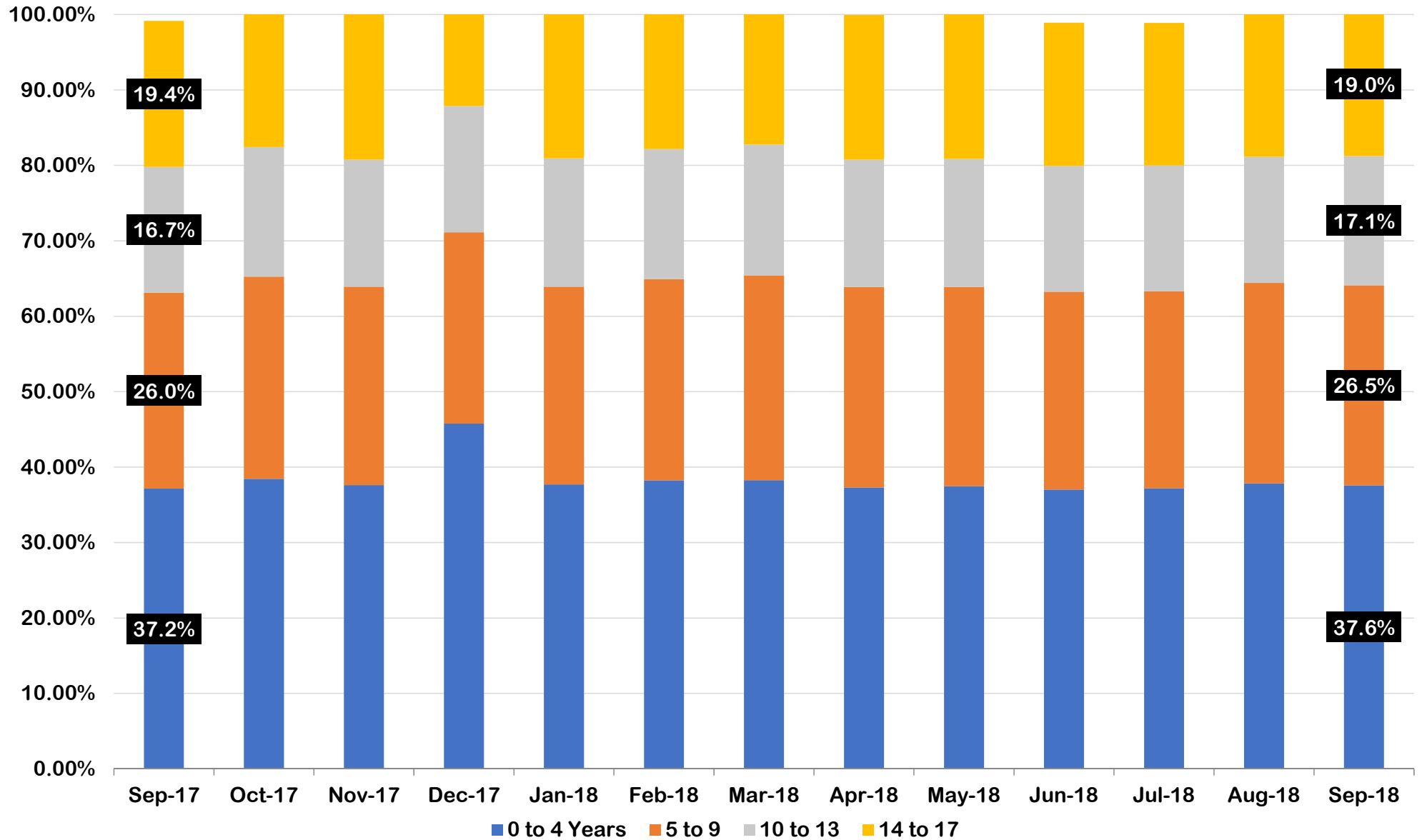
How many children were in Foster Care under the age of 18?



Outcome VI: Children in DFCS Custody Under the Age of 18 (September 2017 – September 2018)

# DIVISION OF FAMILY & CHILDREN SERVICES

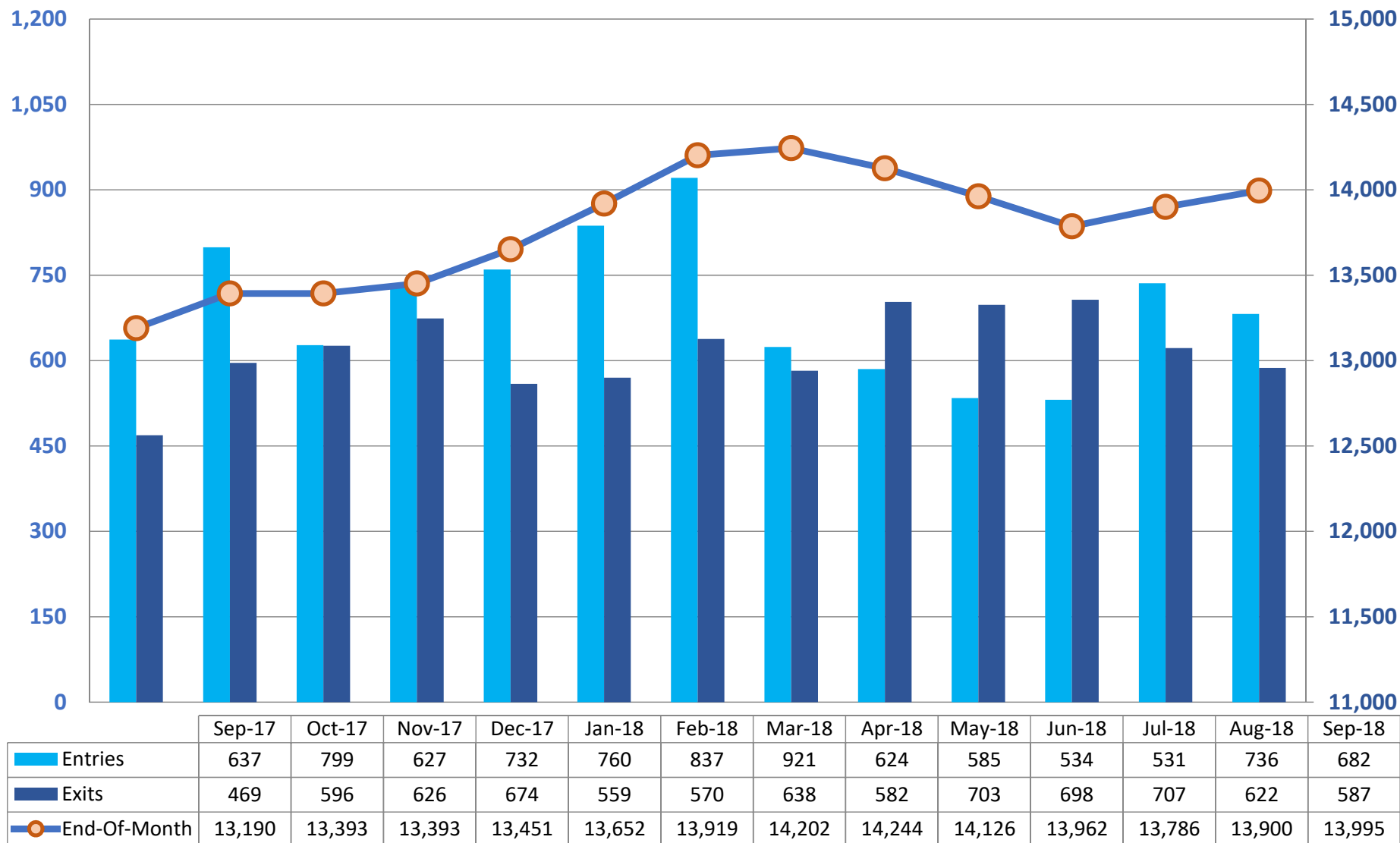
## Has the age distribution of the foster population changed much over the last year?



Outcome VI-A: Children in DFCS Custody Under the Age of 18 by Age Group, (September 2017 – September 2018)

# DIVISION OF FAMILY & CHILDREN SERVICES

How many children are moving in and out of Foster Care? How many remain in care on the last day?

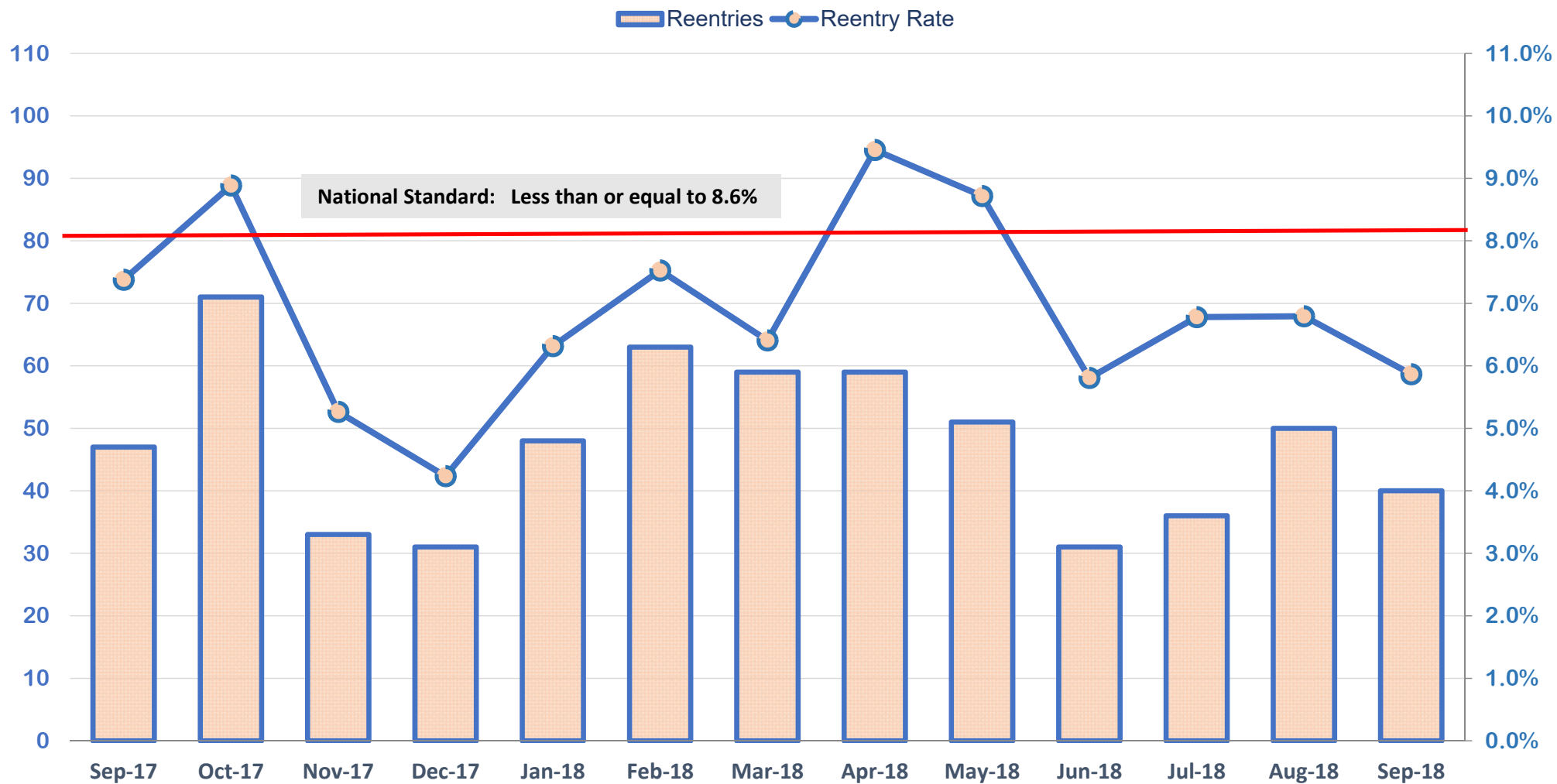


*Outcome VII: Comparison of Foster Care Entries and Exits (September 2017 – September 2018)*

\*\*Reentries that occur within the same month are not double counted in the entries and exits on this chart. This chart represents unique population and movement into custody during the month.

# DIVISION OF FAMILY & CHILDREN SERVICES

How many children were in a prior episode within twelve months of the current episode?

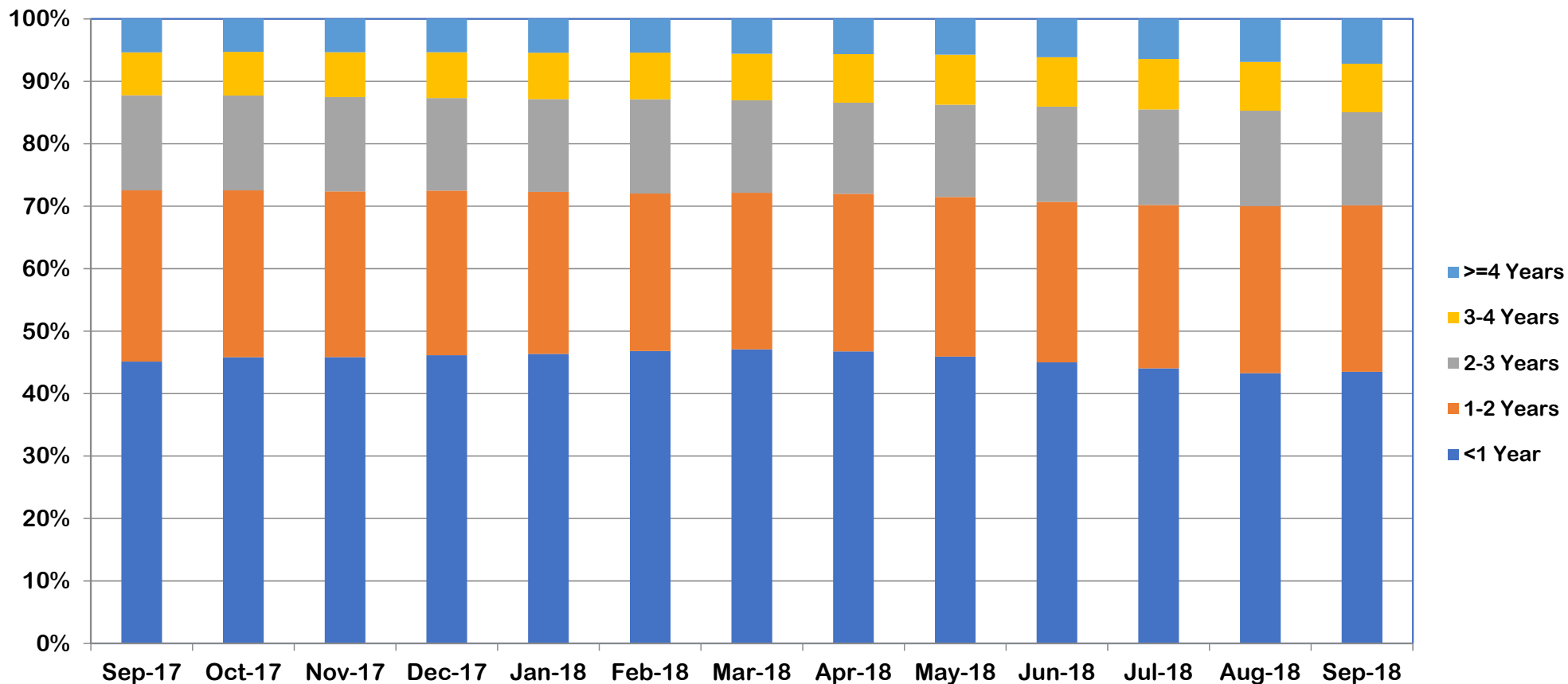


Sep-17	Oct-17	Nov-17	Dec-17	Jan-18	Feb-18	Mar-18	Apr-18	May-18	Jun-18	Jul-18	Aug-18	Sep-18
47	71	33	31	48	63	59	59	51	31	36	50	40
7.4%	8.9%	5.3%	4.2%	6.3%	7.5%	6.4%	9.5%	8.7%	5.8%	6.8%	6.8%	5.9%

*Outcome VIII: Foster Care Re-Entries (September 2017 – September 2018)*

# DIVISION OF FAMILY & CHILDREN SERVICES

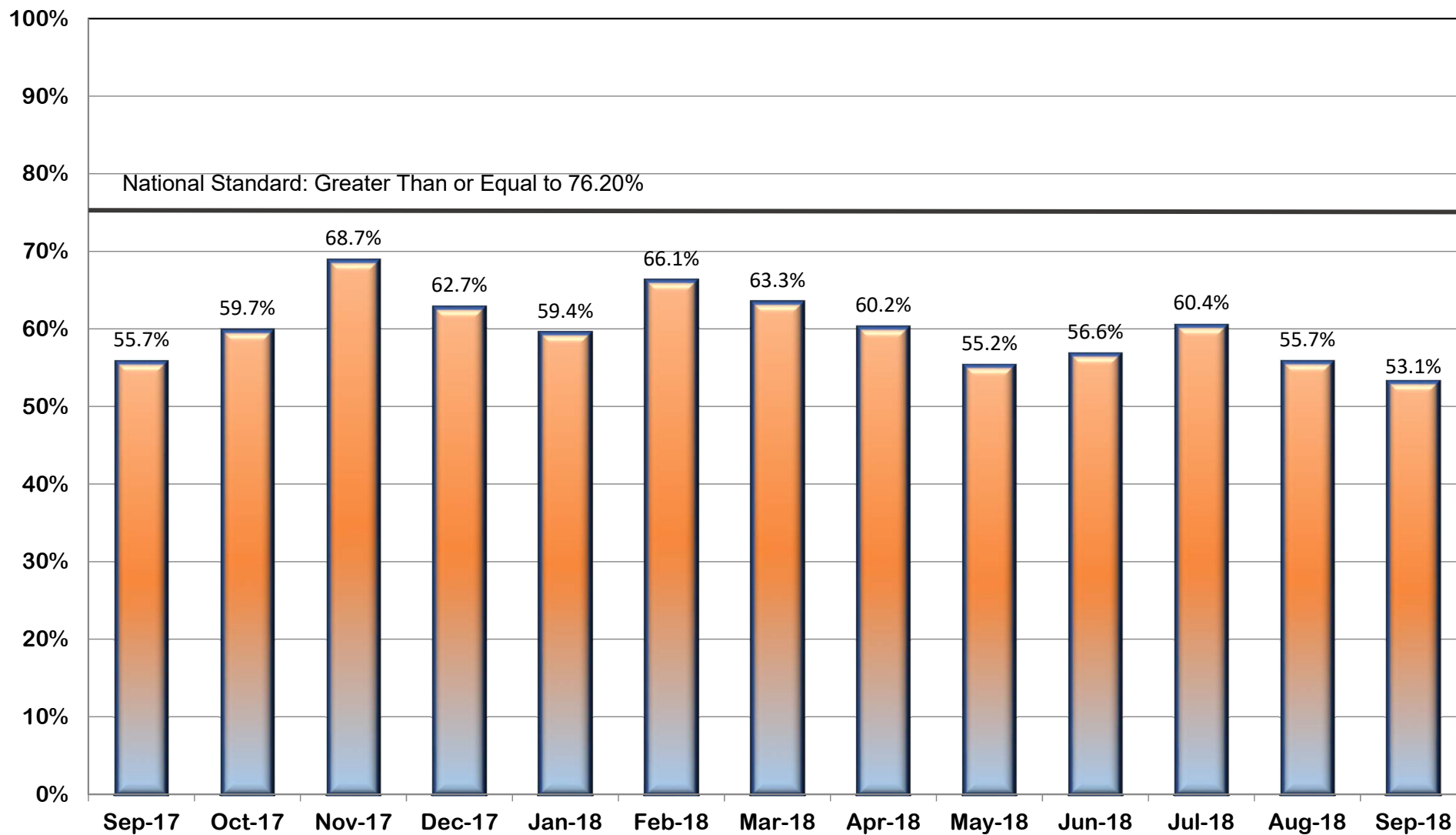
What percentage of foster children have been in care for less than a year, less than 2 years . . . each month?



	Sep-17	Oct-17	Nov-17	Dec-17	Jan-18	Feb-18	Mar-18	Apr-18	May-18	Jun-18	Jul-18	Aug-18	Sep-18
>=4 Years	5.4%	5.3%	5.3%	5.4%	5.4%	5.4%	5.6%	5.7%	5.7%	6.1%	6.4%	6.9%	7.2%
3 - <4 Years	6.9%	7.0%	7.2%	7.3%	7.4%	7.5%	7.4%	7.8%	8.0%	7.9%	8.1%	7.8%	7.8%
2 - <3 Years	15.2%	15.1%	15.1%	14.8%	14.8%	15.1%	14.8%	14.6%	14.8%	15.2%	15.3%	15.3%	14.9%
1 - <2 Years	27.4%	26.7%	26.5%	26.4%	26.0%	25.2%	25.1%	25.2%	25.6%	25.7%	26.2%	26.8%	26.6%
<1 Year	45.1%	45.8%	45.8%	46.1%	46.3%	46.8%	47.1%	46.7%	45.9%	45.0%	44.0%	43.3%	43.5%

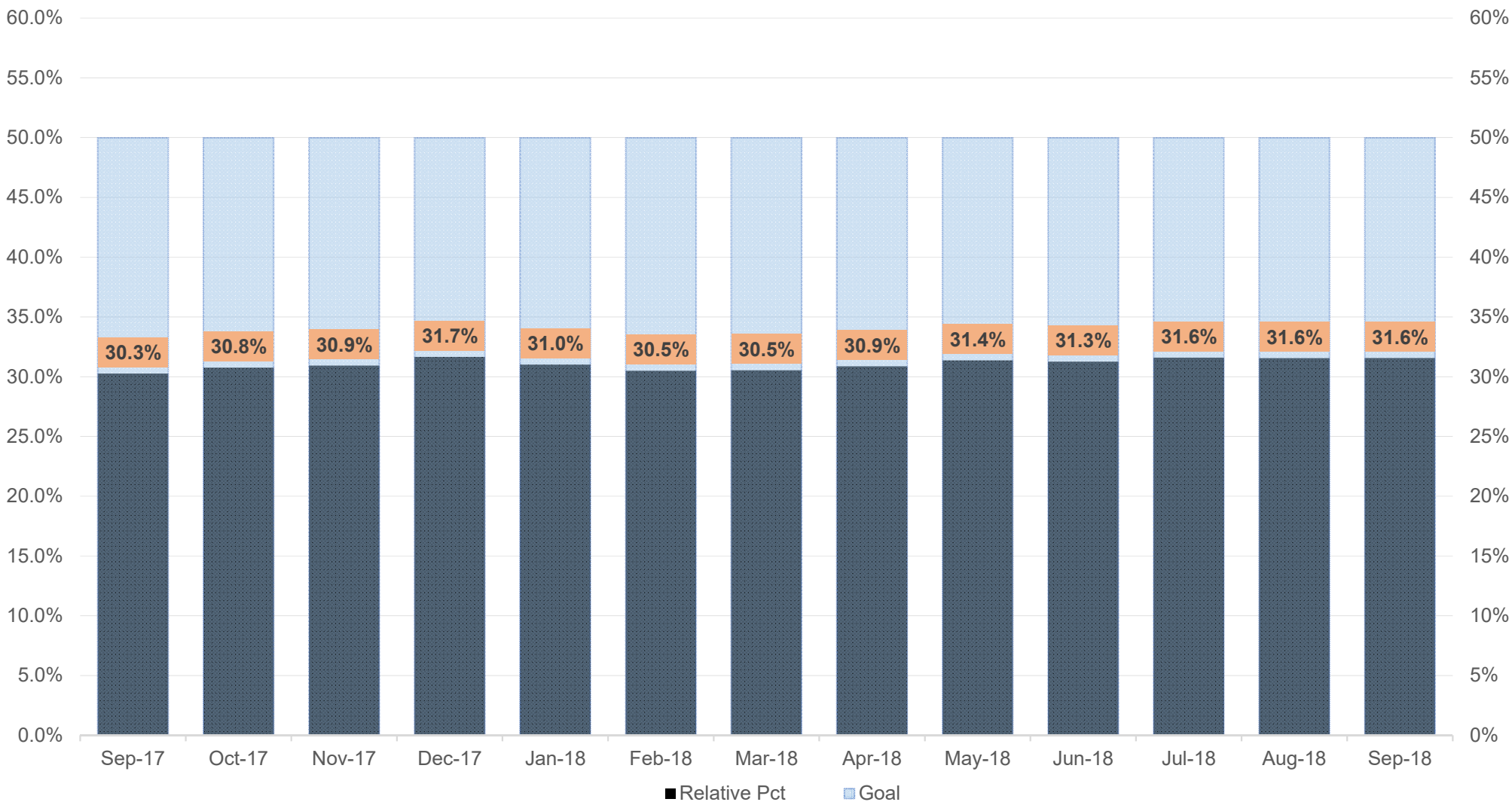
# DIVISION OF FAMILY & CHILDREN SERVICES

What percentage of reunifications occurred within twelve (12) months of the child entering foster care?



*Outcome X: Length of Time to Reunification (September 2017 – September 2018)*

What percentage of children in Foster Care were placed with a relative during the month?

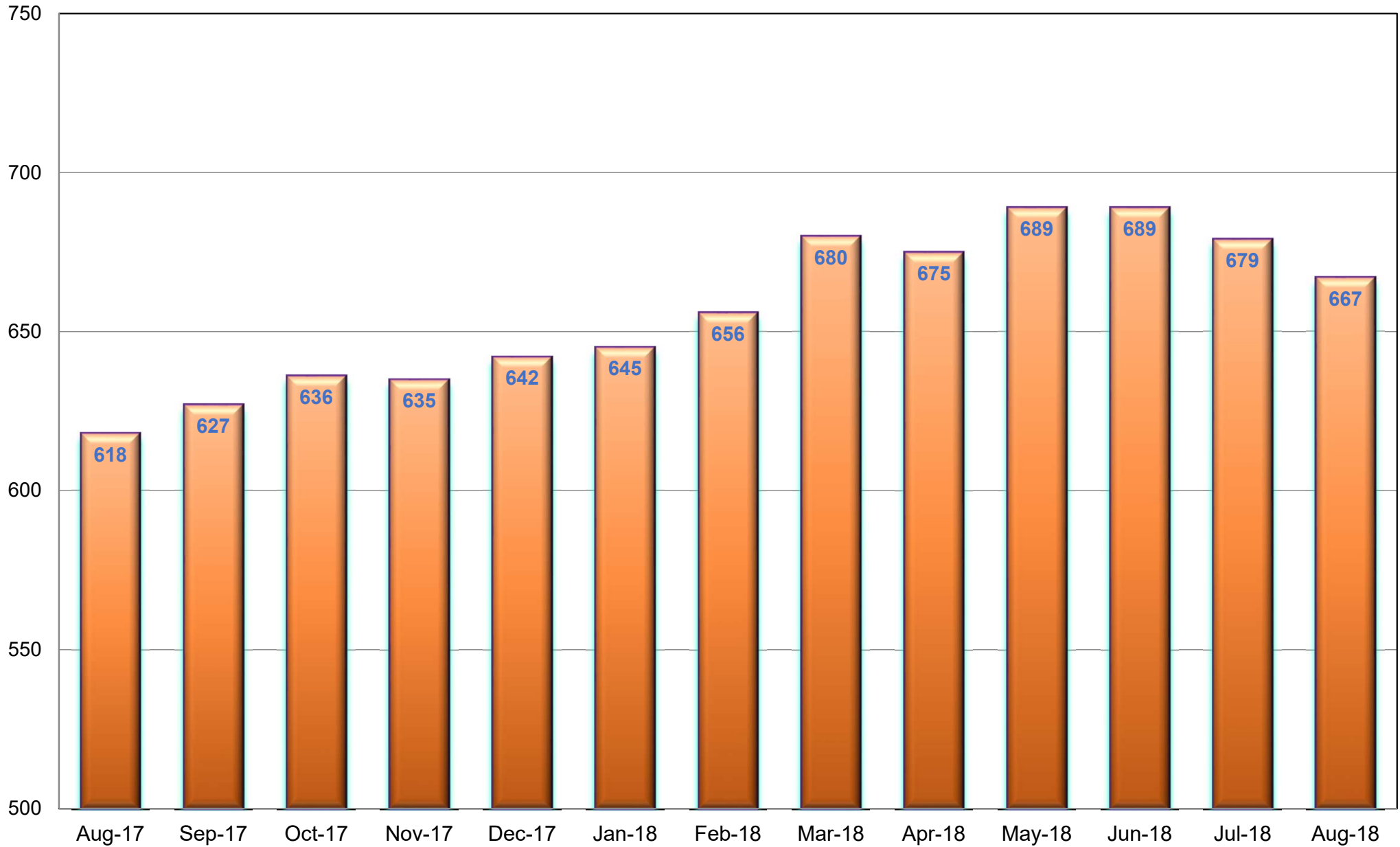


Outcome XI: Percent of Children Placed with Relatives (September 2017 – September 2018)



# DIVISION OF FAMILY & CHILDREN SERVICES

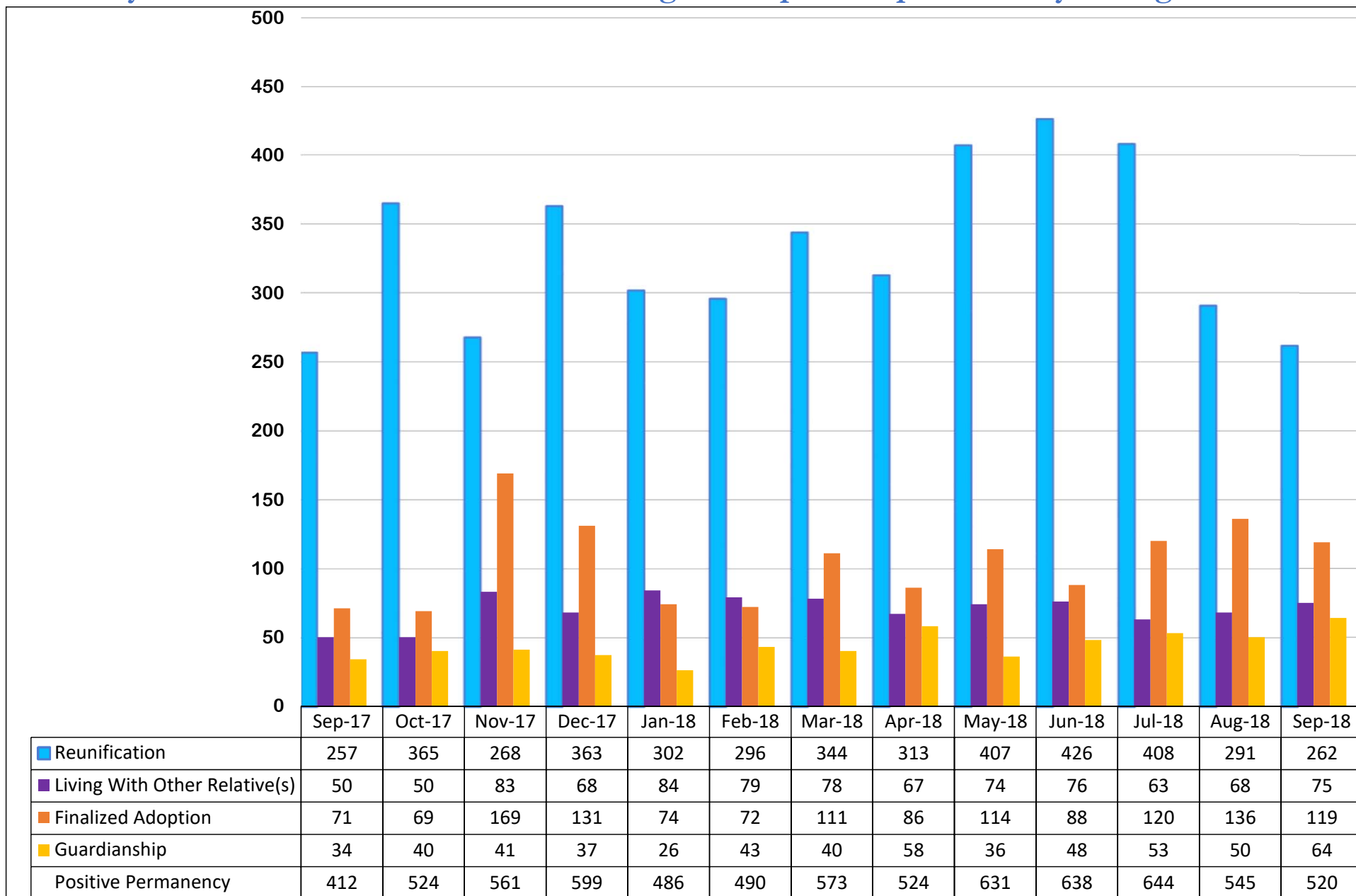
How many children remained in Foster Care after the age of 18?



*Outcome XII: Extended Youth Services (September 2017 – September 2018)*

# DIVISION OF FAMILY & CHILDREN SERVICES

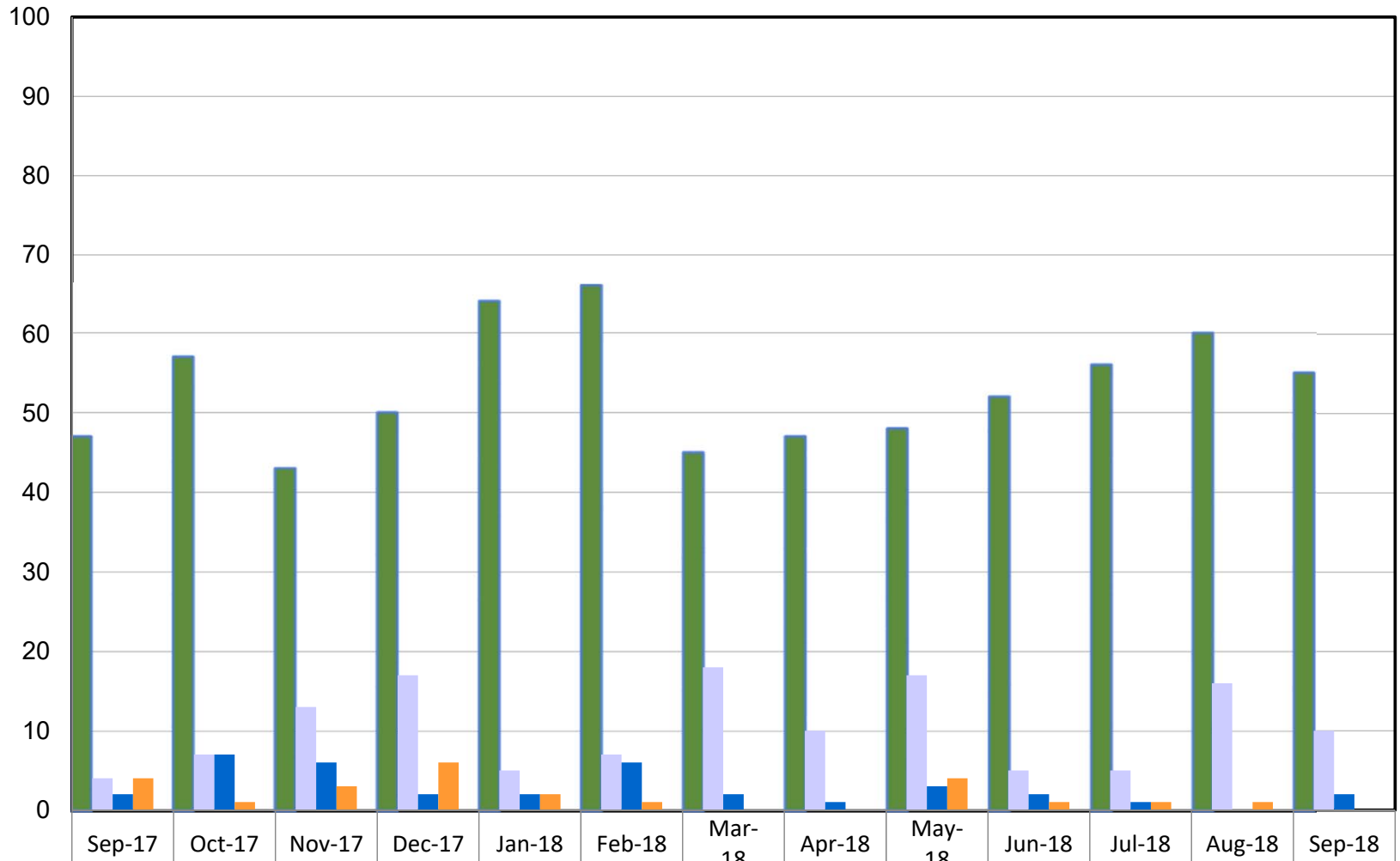
How many children in Foster Care were discharged to a positive permanency during the month?



Outcome XIII: Number of Discharges (September 2017 – September 2018)

# DIVISION OF FAMILY & CHILDREN SERVICES

How many children in Foster Care were discharged to another permanency during the month?

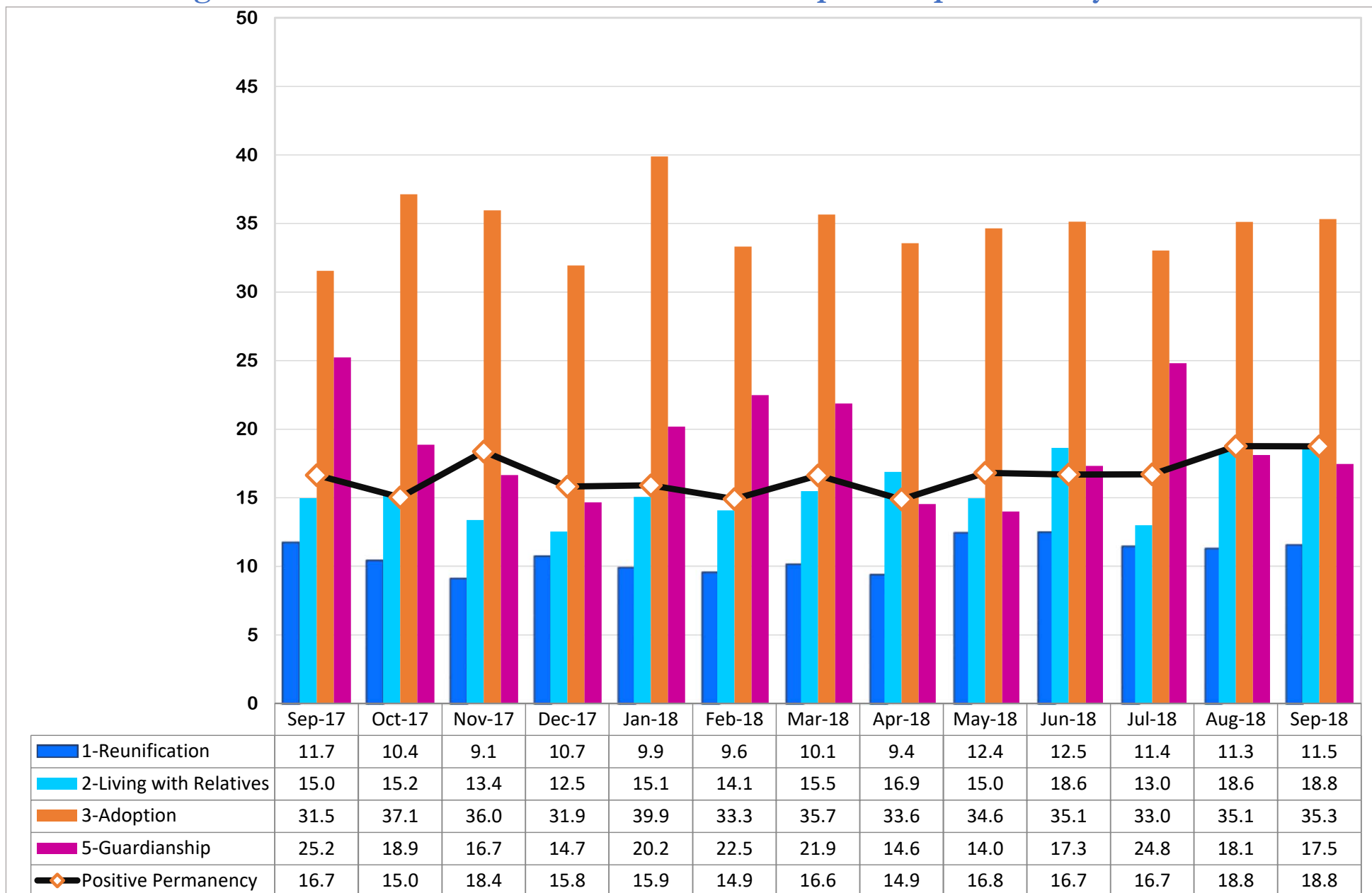


	Sep-17	Oct-17	Nov-17	Dec-17	Jan-18	Feb-18	Mar-18	Apr-18	May-18	Jun-18	Jul-18	Aug-18	Sep-18
Emancipation	47	57	43	50	64	66	45	47	48	52	56	60	55
Transfer to Another Agency	4	7	13	17	5	7	18	10	17	5	5	16	10
Runaway	2	7	6	2	2	6	2	1	3	2	1	0	2
Death of Child	4	1	3	6	2	1	0	0	4	1	1	1	0
Other Permanency	57	72	65	75	73	80	65	58	72	60	63	77	67

Outcome XIII: Number of Discharges (September 2017 – September 2018)

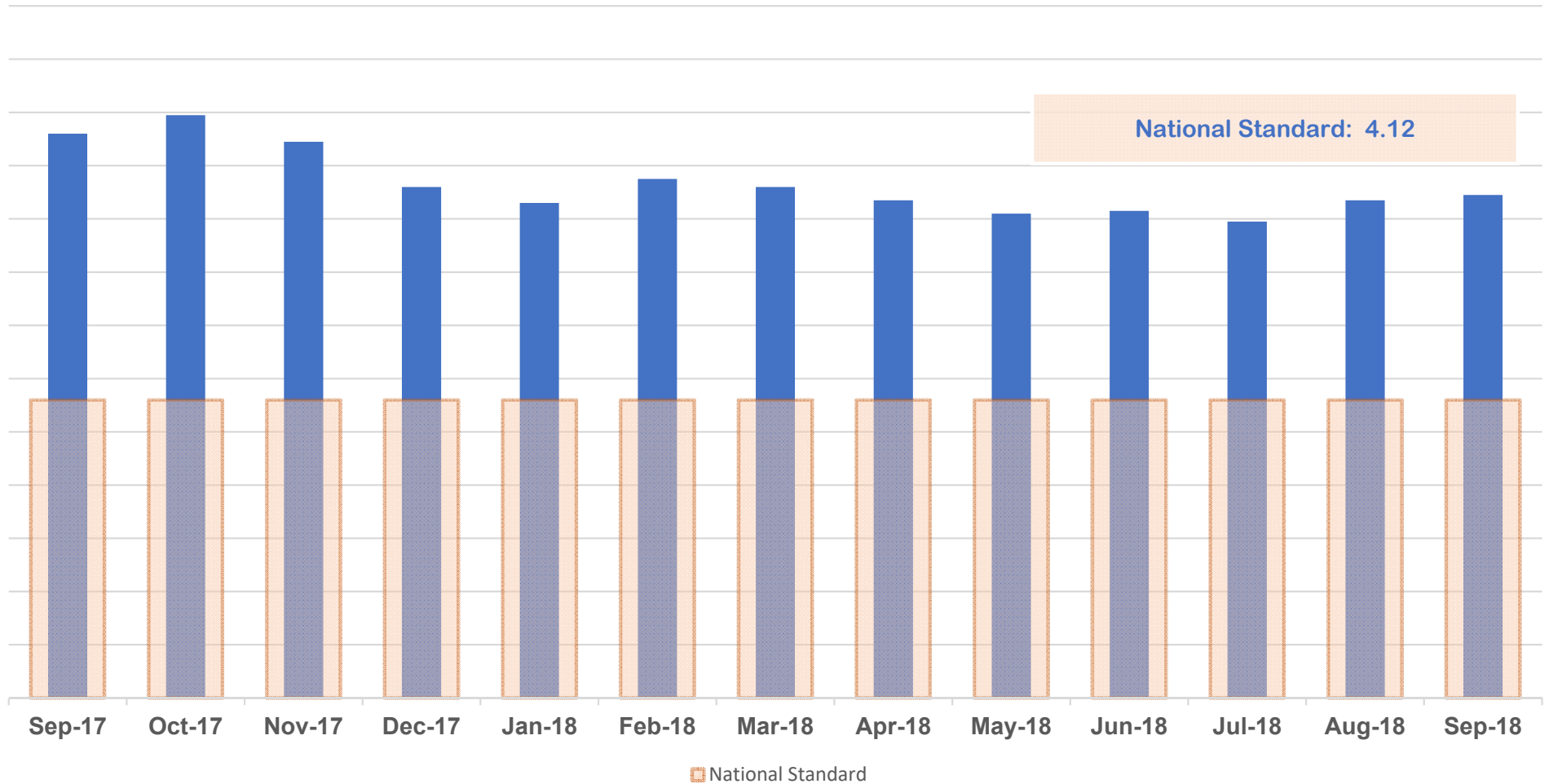
# DIVISION OF FAMILY & CHILDREN SERVICES

What is the average time in months for a foster child to reach positive permanency?



Outcome XIII - A: Number of Discharges (September 2017 – September 2018)

## How is the state of Georgia performing on the federal measure of Placement Stability?



Sep-17	Oct-17	Nov-17	Dec-17	Jan-18	Feb-18	Mar-18	Apr-18	May-18	Jun-18	Jul-18	Aug-18	Sep-18
5.12	5.19	5.09	4.92	4.86	4.95	4.92	4.87	4.82	4.83	4.79	4.87	4.89

Outcome XIV: Placement Stability Performance Measure (September 2017 – September 2018)

# Appendices

APPENDIX A

**Regional Chart of Outcome VI**

**Children in DFCS Custody Under the Age of 18  
(September 2017 – September 2018)**

# DIVISION OF FAMILY & CHILDREN SERVICES

## Outcome VI: Children in DFCS Custody Under the Age of 18 (By Region) (September 2017 – September 2018)

Region	Sep-17	Oct-17	Nov-17	Dec-17	Jan-18	Feb-18	Mar-18	Apr-18	May-18	Jun-18	Jul-18	Aug-18	Sep-18
1	1,338	1,378	1,379	1,420	1,437	1,460	1,518	1,528	1,498	1,473	1,428	1,452	1,489
2	814	832	867	878	879	922	975	979	990	983	1,011	1,003	1,004
3	960	1,004	988	995	974	985	983	971	956	962	955	962	986
4	1,127	1,127	1,127	1,145	1,124	1,124	1,143	1,141	1,163	1,164	1,133	1,120	1,103
5	1,132	1,147	1,177	1,163	1,156	1,190	1,208	1,224	1,225	1,200	1,182	1,191	1,205
6	734	744	767	761	760	773	776	770	766	743	732	732	719
7	510	539	560	581	612	652	697	717	714	720	732	757	772
8	702	708	702	714	723	741	744	745	749	749	760	768	767
9	579	591	578	577	579	589	592	590	590	577	574	568	563
10	747	753	759	785	791	778	772	776	760	757	751	754	771
11	1,176	1,192	1,167	1,194	1,193	1,219	1,265	1,261	1,261	1,251	1,257	1,252	1,251
12	889	923	933	928	959	976	1,005	1,000	1,013	1,003	982	982	978
13	1,383	1,451	1,416	1,402	1,410	1,430	1,485	1,451	1,464	1,404	1,375	1,359	1,343
14	1,568	1,600	1,600	1,582	1,614	1,650	1,677	1,673	1,680	1,674	1,621	1,622	1,631
<b>Statewide</b>	<b>13,659</b>	<b>13,989</b>	<b>14,020</b>	<b>14,125</b>	<b>14,211</b>	<b>14,489</b>	<b>14,840</b>	<b>14,826</b>	<b>14,829</b>	<b>14,660</b>	<b>14,493</b>	<b>14,522</b>	<b>14,582</b>



APPENDIX B

**Regional Chart of Outcome XIV**

**Placement Stability Performance Coefficient  
(September 2017 – September 2018)**

National Standard = 4.12

Desired Goal to Meet the PIP = 6.01

# DIVISION OF FAMILY & CHILDREN SERVICES

## Outcome VI: Placement Stability for Children in DFCS Custody Under the Age of 18 (By Region) (September 2017 – September 2018)

Region	Sep-17	Oct-17	Nov-17	Dec-17	Jan-18	Feb-18	Mar-18	Apr-18	May-18	Jun-18	Jul-18	Aug-18	Sep-18
1	5.45	5.77	5.82	5.77	5.66	5.84	5.68	5.71	5.59	5.51	5.37	5.42	5.64
2	6.11	5.85	5.62	5.24	5.41	5.63	5.8	5.73	5.58	5.54	5.41	5.44	5.19
3	4.59	4.82	4.73	4.61	4.73	4.86	4.86	5	5.01	4.79	5.05	4.89	4.75
4	4.5	4.55	4.77	4.62	4.31	4.36	4.4	3.87	3.75	3.61	3.57	3.55	3.44
5	5.38	5.59	5.45	5.48	5.36	5.23	5.28	5.26	5.49	5.51	5.47	5.47	5.38
6	4.54	4.2	4.07	3.74	3.93	3.91	4.01	4.08	3.82	4.06	4.1	4.33	4.62
7	3.57	3.36	3.41	3.16	2.84	3.02	2.94	3.06	3.14	3.17	3.22	3.35	3.4
8	3.33	3.49	3.51	3.32	3.1	2.97	2.92	2.73	2.96	3.11	3.08	3.72	3.9
9	3.59	3.51	3.32	3.43	3.53	3.82	3.61	3.5	3.09	3.48	3.89	3.97	3.83
10	4.25	4.08	3.95	4.06	3.94	4.12	3.82	3.46	3.34	3.07	3.09	2.89	2.81
11	4.03	4.18	3.93	3.77	3.62	3.88	4.21	4.28	4.21	4.27	4.23	4.22	4.23
12	4.42	4.82	4.99	4.99	5.13	5.17	5.04	4.7	4.61	4.66	4.65	4.59	4.88
13	7.35	7.38	7.15	6.73	6.65	6.73	6.44	6.47	6.45	6.49	6.3	6.67	6.64
14	6.11	6.24	6.01	5.8	5.81	5.83	5.95	6.22	6.25	6.36	6.18	6.38	6.36
<b>Statewide</b>	<b>5.12</b>	<b>5.19</b>	<b>5.09</b>	<b>4.92</b>	<b>4.86</b>	<b>4.95</b>	<b>4.92</b>	<b>4.87</b>	<b>4.82</b>	<b>4.83</b>	<b>4.79</b>	<b>4.87</b>	<b>4.89</b>