

Monthly Measures and Results for September 2018*

*(Reflects Safety Outcomes as of July 31, 2018 And Permanency
Outcomes as of August 31, 2018)
With Appendices

This report is produced by the Data Unit. For questions or comments, you may contact one of the following:
Samantha Adams, Director (Samantha.Adams@dhs.ga.gov)
John Roach, Unit Manager (John.Roach@dhs.ga.gov)
Vickie Fluellen, Operations Analyst 3 (Vickie.Fluellen@dhs.ga.gov)

- Part I: Definitions And Data Sources contained in Report**
- Part II: Safety Outcomes**
- Part III: Permanency/Well-being Outcomes**
- Part IV: Appendices**
 - A. Regional Charts of Outcome V (Trend of Unique Children in the Legal Custody of DFCS Under the Age of 18)**
 - B. Regional Charts of Outcome XIV: Stability Performance Coefficient (Number of Moves/Number of Days in Custody * 1000)**

***There are no revisions to this document to date.

SAFETY: Children are first and foremost, protected from abuse and neglect.

Outcome I: Child Protective Services Cases

Count of unique CPS Investigations and Family Preservation (Ongoing) stages open at any point during the month vs. Average count of unique CPS Investigations, Family Preservation, and Family Support stages for the prior four state fiscal years. Outcome is calculated 45 days prior to the date of report.

Outcome 1A: Family Support Cases Only: Count of unique Family Support stages open at any point during the month vs average of four prior state fiscal years..

Outcome 1B: Family Preservation Cases Only: Count of unique Family Preservation stages open at any point during the month vs average of four prior state fiscal years..

Outcome 1C: Investigation Cases Only: Count of unique Investigation stages open at any point during the month vs average of four prior state fiscal years.

Outcome 1C_1: Comparison of Investigations that were open at anytime during the month vs investigations opened during the month vs the average of the prior state fiscal years at any point in time.

Sources: SHINES

Outcome II: Recurrence of Substantiated Child Maltreatment

Of all the children who were victims of substantiated maltreatment in the first 6 months of the year, the percentage that had substantiated maltreatment within the following 6 months. Outcome is calculated 45 days prior to the date of report. Each month is calculated as a rolling calendar year. *National Standard: less than or equal to 5.40%*

Source: SHINES

Outcome III: Disposition of Child Abuse and Neglect Reports

Chart reflects the disposition of reports received in a particular month. Data includes count of Family Support, Investigations -- Substantiated Investigations and Unsubstantiated Investigations, and Screen-outs. Outcome is calculated 45 days prior to the date of report.

Source: SHINES

PERMANENCY: Children have permanency and stability in their living situations.

Outcome IV: Subsequent Case-type of Investigations by Disposition

Chart reflects the disposition of investigations received in a particular month by the subsequent case type. Charts are broken out by substantiated and unsubstantiated investigation and their subsequent track assignment or final disposition. Outcome is calculated 45 days prior to the date of report.

Source: SHINES

Outcome V: Number of Child Placement Services Cases

Count of unique children who were involved in an open Foster Care or Adoption stage during the month. In placement services each child who is the principal (PC) is considered a case. The chart also reveals the average of the last four state fiscal years to provide the viewer with a prior glimpse of the trend in placement cases.

Source: SHINES

Outcome VI: Children in the Legal Custody of DFCS Under the Age of 18

Count of unique children who were in the legal custody of DFCS (17 years of age and under) at some point during the month.

Source: SHINES

Outcome VI-A: Age Distribution of Children in Custody: Chart is a percentage of children in DFCS Custody by age group.

Outcome VII: Comparison of Foster Care Entries & Exits

Number of children who have entered foster care and number of children who have exited foster care during the month. Total children at end of month show the number of children on the last day of the month.

Source: SHINES

Outcome VIII: Foster Care Re-entries

Of all the children who entered foster care, the percentage that were discharged from a prior episode of foster care within 12 months of the current foster care placement. National Standard: less than or equal to 8.60%.

Source: SHINES

PERMANENCY cont'd: Children have permanency and stability in their living situations.

Outcome IX: Foster Care Length of Stay

Percentage of children by number of months in foster care during each month.

Source: SHINES

Outcome X: Length of Time to Achieve Reunification

Percentage of children who exited care during the month through reunification with their family that reunified in less than 12 months from the date of their removal. National Standard: greater than or equal to 76.20%

Source: SHINES

Outcome XI: Children Placed with Relatives

Of all children in DFCS custody, the percentage that are placed with a relative or a relative foster home.

State Target: greater than or equal to 30.00%

Source: SHINES

Outcome XII: Extended Youth Services

Number of children ages 18 – 21 who remained in the custody of DFCS beyond their birth month.

Source: SHINES

Outcome XIII: Monthly Discharges

The number of children who were discharged during the month by permanency decision divided into two charts by positive permanency vs other types.

Source: SHINES

Outcome XIII - A: Average Number of Months to Achieve Positive Permanency

Of all children in Outcome XIII, the number of months from removal (entry into foster care) until exit due to reunification, relative, adoption or guardianship..

Source: SHINES

PERMANENCY cont'd: Children have permanency and stability in their living situations.

Outcome XIV: Placement Stability Performance (Number of Moves/Number of Days in Custody * 1000)

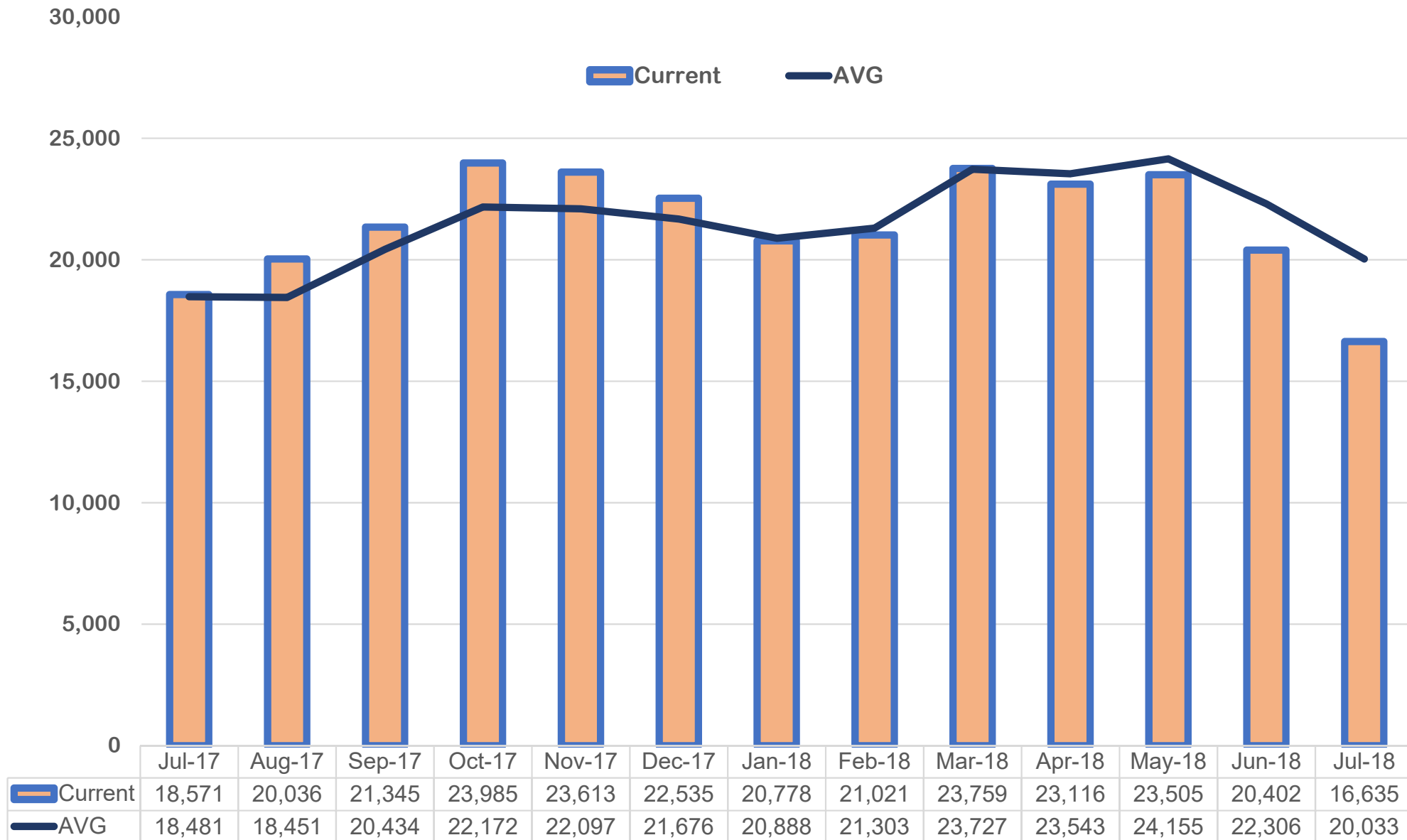
A calculated value based upon the ACF CFPS Round 3 which is part of Program Improvement. It is calculated from a rolling 12 month population of the entry cohort where the child remained in custody for over 8 days and was not 18 on the date of removal. The federal standard is 4.12.

Source: SHINES

***Note: Data may vary from month to month due to 13 month data trends being re-run over the time span for the various outcomes in this report.*

DIVISION OF FAMILY & CHILDREN SERVICES

How many CPS Cases were open monthly during the last 13 months?

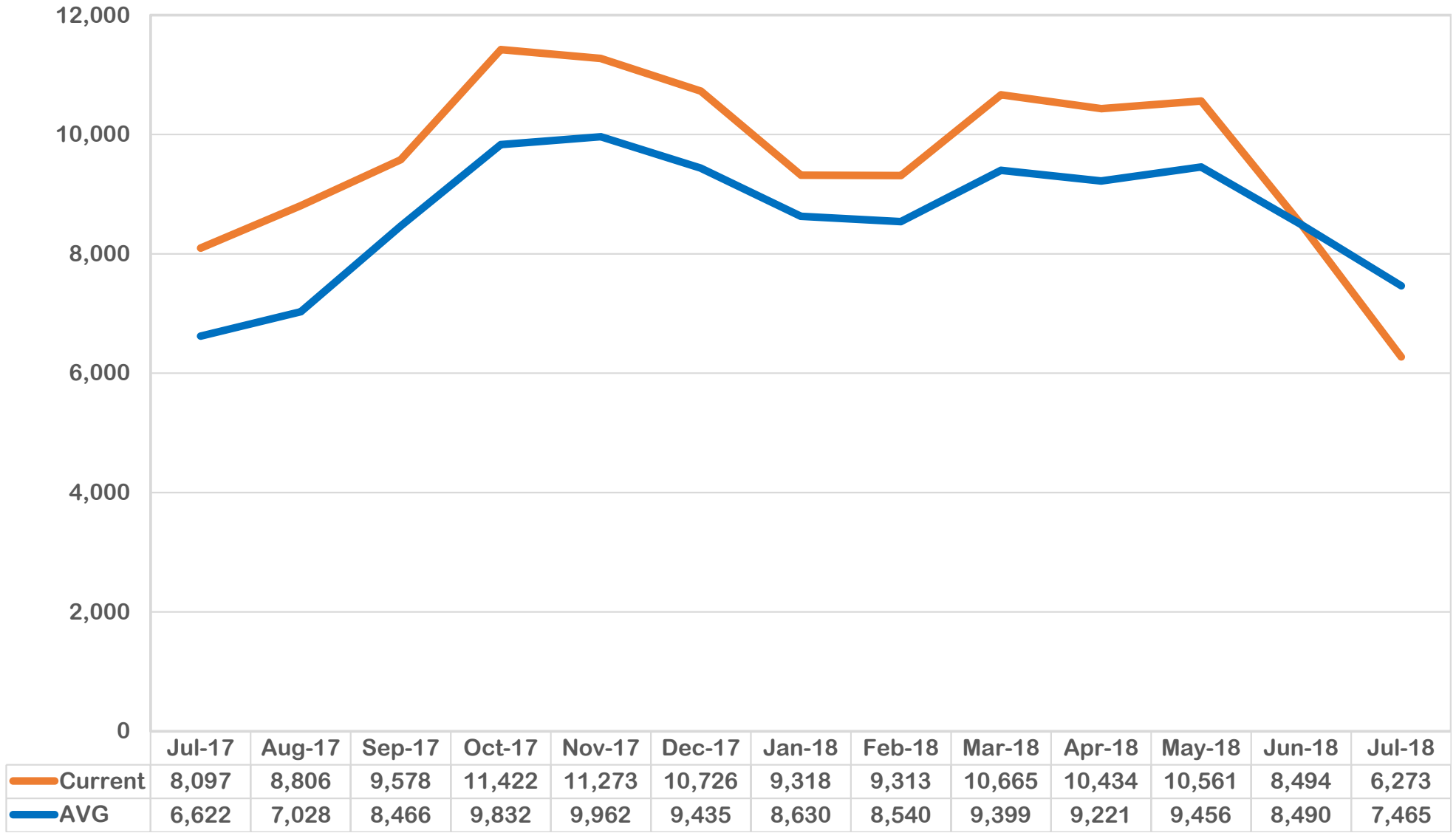


Average trend is calculated from prior four years.

Outcome I: Child Protective Services Cases, (July 2017 – July 2018)

DIVISION OF FAMILY & CHILDREN SERVICES

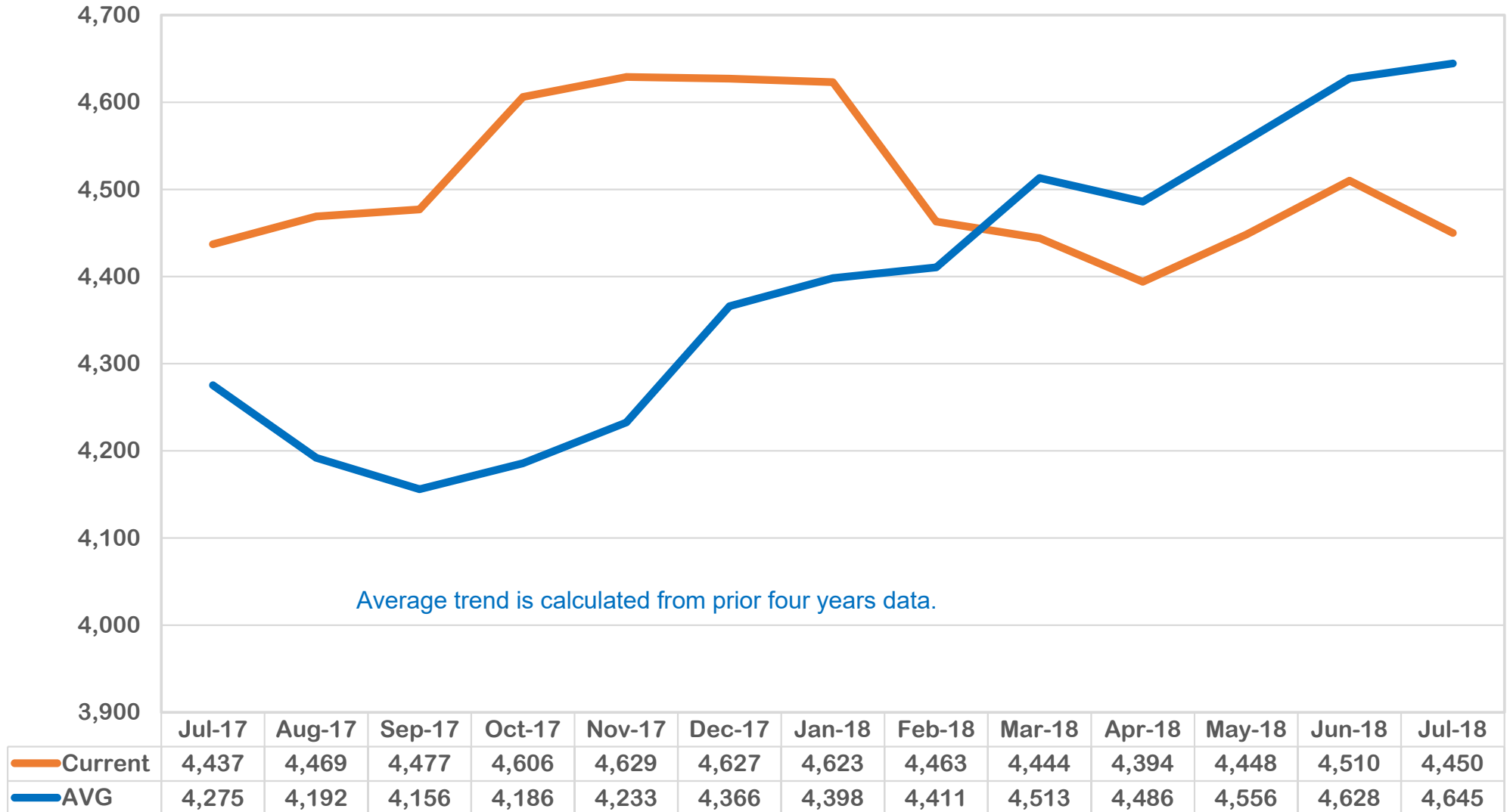
How many Family Support Cases were open per month for the last 13 months?



The graph above reveals a similar trend in the current 13-month trend compared to the average of the prior four years' average. During July 2018, there is a 16% decline in the number of cases when compared to the prior 4 year's averages. July 2018 showed a rapid decrease in the number of cases by 16%.

DIVISION OF FAMILY & CHILDREN SERVICES

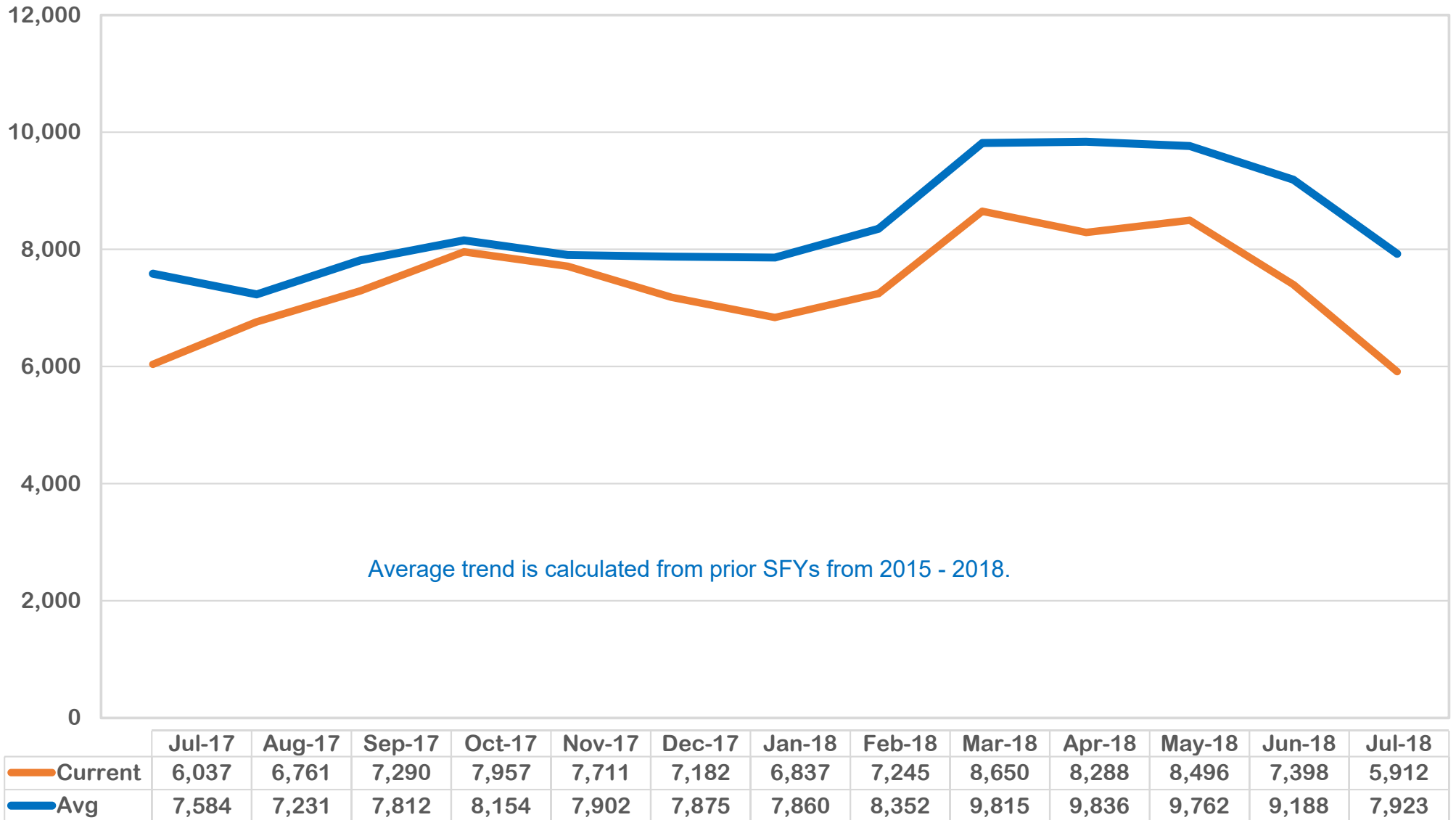
How many Family Preservation Cases were open per month during for the last 13 months?



Family Preservation cases are higher than the average trend of the prior four years' average trend during the first 8 of the trend followed by an inverse effect. In July 2018 Family Preservation cases were 4% lower than the average of the last 4 years..

DIVISION OF FAMILY & CHILDREN SERVICES

How many Investigation Cases were open per month for the past 13 months?

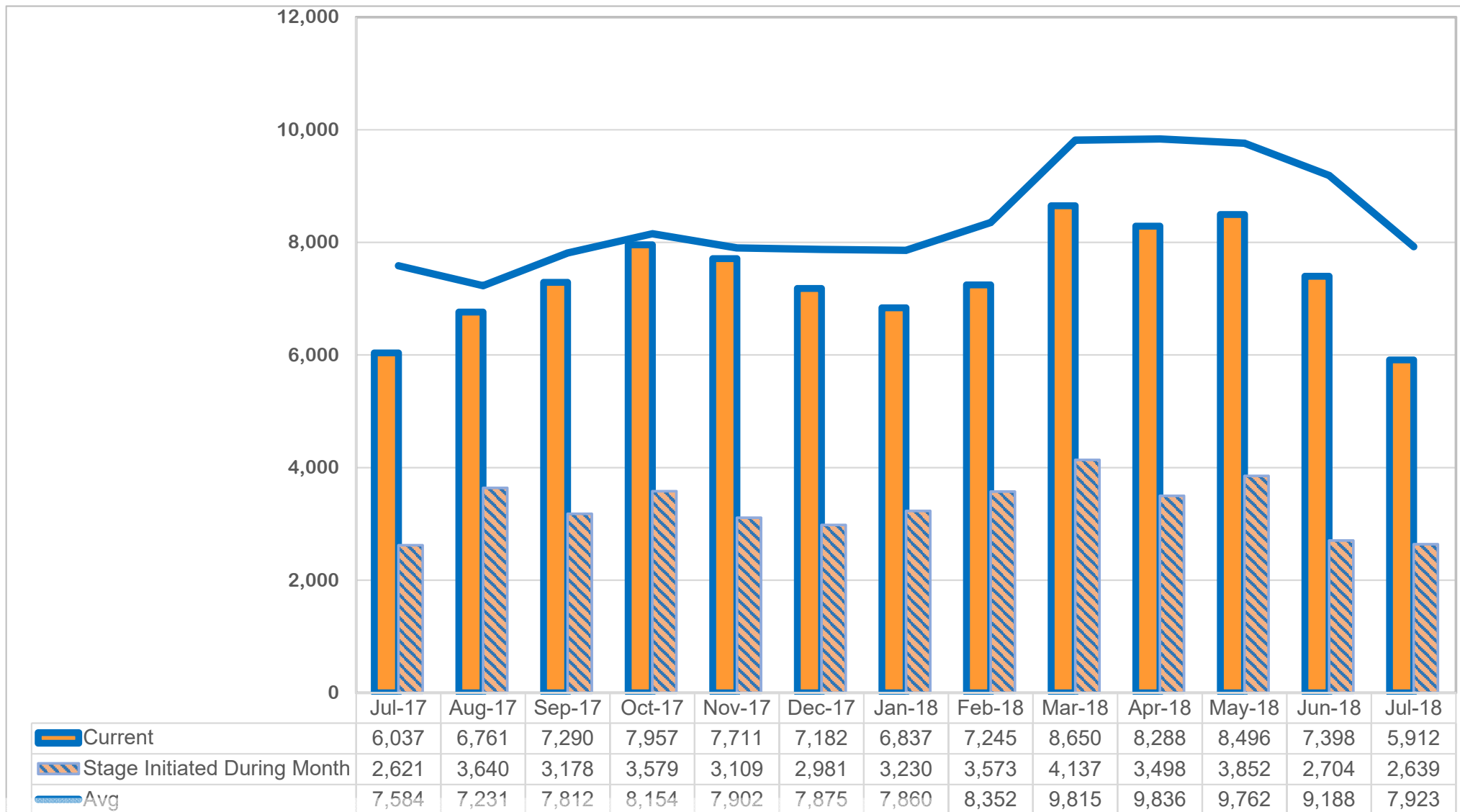


Although the last 13 months has seen an increase in investigations of over 20% since the prior 13 months (not pictured), the current year's total investigations reveals an improvement in investigations as indicated in the lower case loads.

Outcome IC: Child Protective Services Cases Investigation Cases Only (July 2017 - July 2018)

DIVISION OF FAMILY & CHILDREN SERVICES

How many Investigation Cases were open at any time during the month Vs Investigation Cases that were initiated during the month for the past 13 months?

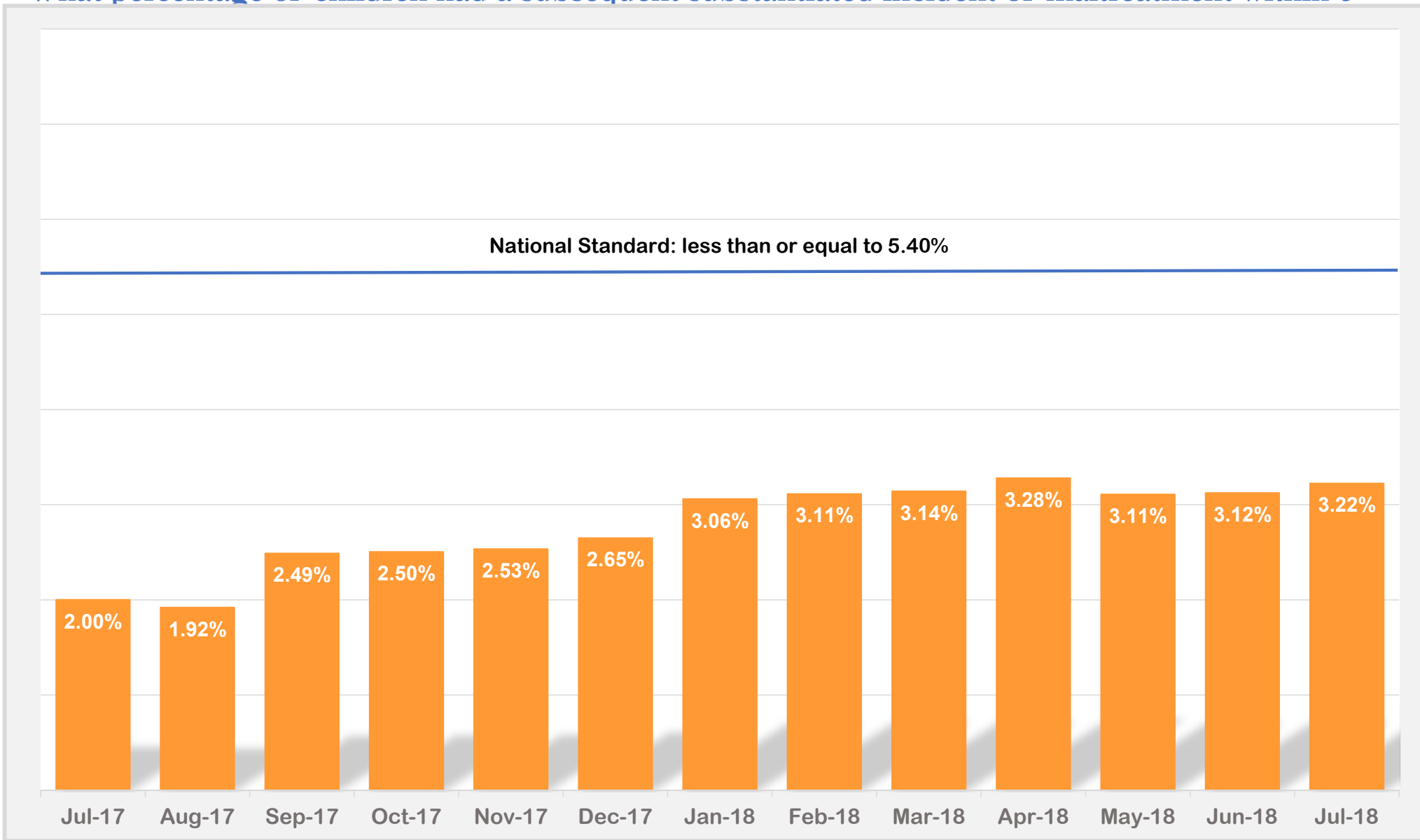


Average trend is calculated from prior four years.

This chart indicates that during each month, the cases that are opened during the month are less than half of the overall open cases during the month. Additionally, the increases and decreases in those opened during the month resemble the trend in the current cases open during the month excluding Sep 2017.

Outcome IC_1: Child Protective Services Cases Investigation Cases Only (July 2017 – July 2018)

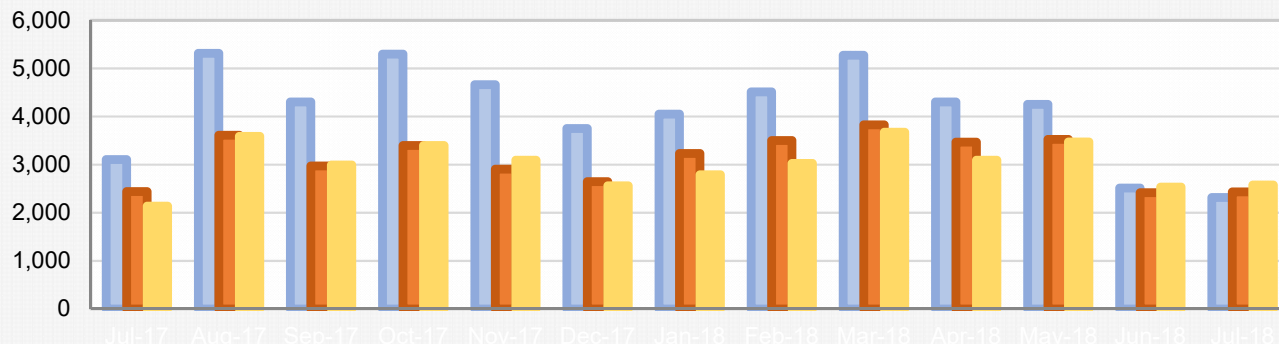
What percentage of children had a subsequent substantiated incident of maltreatment within 6



The trend reveals that Georgia has consistently maintained a low recurrence rate below the national standard of 5.4%. However, increases can be seen from October 2017 – April 2018. Georgia has a higher percentage of maltreatment in July 2018 as compared to July 2017.

DIVISION OF FAMILY & CHILDREN SERVICES

What was the disposition of all CPS reports received during the month?

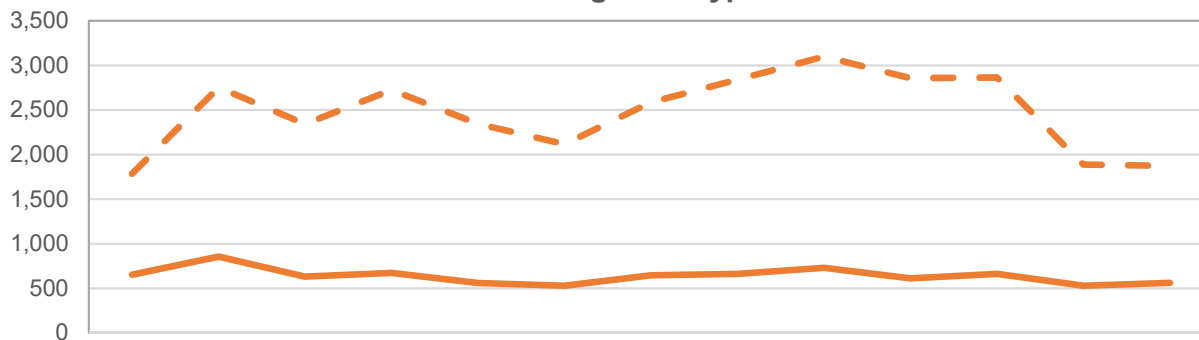


This chart reveals the disposition of CPS reports that were received for service. In July 2018, 33% were investigations, 32% were Family Support, and 35% were Screen Outs.

The lower graph shows how many investigations were substantiated and unsubstantiated.

	Jul-17	Aug-17	Sep-17	Oct-17	Nov-17	Dec-17	Jan-18	Feb-18	Mar-18	Apr-18	May-18	Jun-18	Jul-18
Family Support	3,107	5,316	4,304	5,299	4,662	3,752	4,050	4,515	5,275	4,303	4,254	2,515	2,316
Investigations	2,439	3,610	2,974	3,397	2,905	2,647	3,232	3,503	3,829	3,469	3,526	2,417	2,435
Screenouts	2,136	3,589	2,993	3,397	3,091	2,559	2,791	3,026	3,676	3,093	3,473	2,535	2,575

Investigation Types

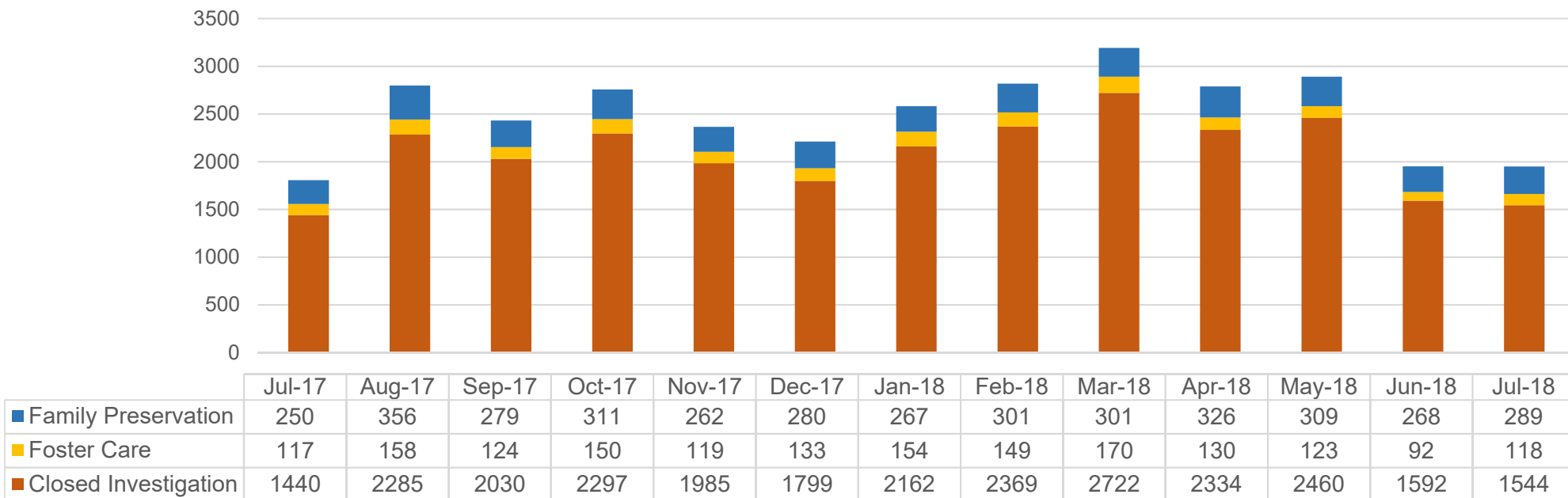
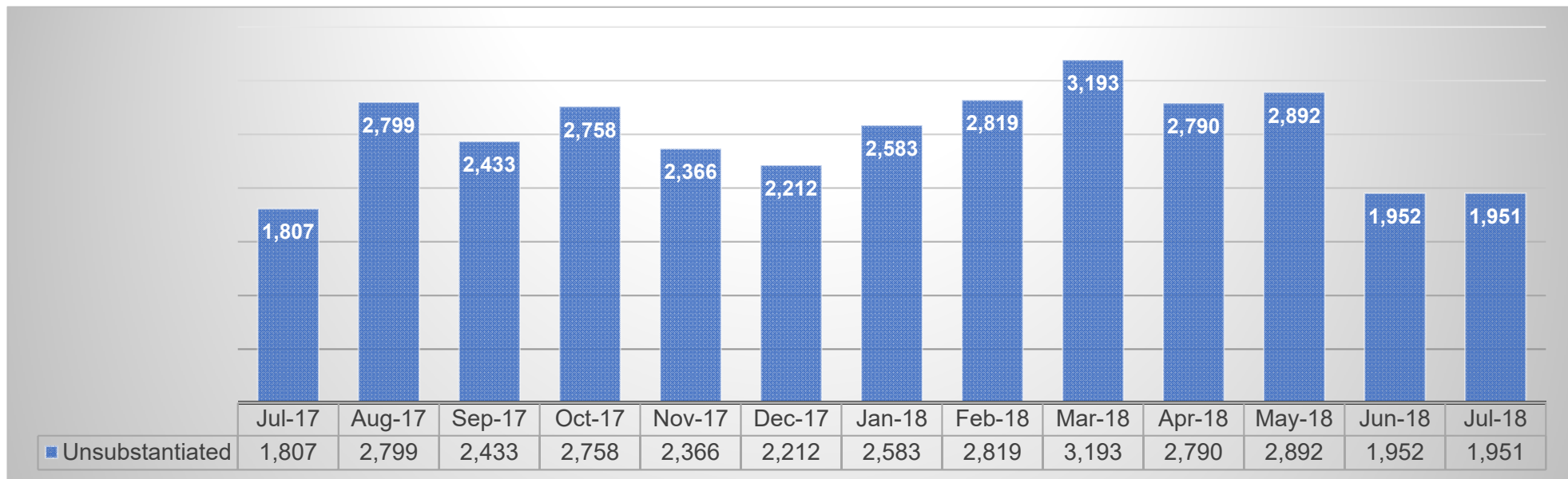


	Jul-17	Aug-17	Sep-17	Oct-17	Nov-17	Dec-17	Jan-18	Feb-18	Mar-18	Apr-18	May-18	Jun-18	Jul-18
Substantiated	653	856	631	673	560	530	646	662	730	611	662	529	561
Unsubstantiated	1,786	2,754	2,343	2,724	2,345	2,117	2,586	2,841	3,099	2,858	2,864	1,888	1,874

What was the final disposition of closed investigations during the month?

DIVISION OF FAMILY & CHILDREN SERVICES

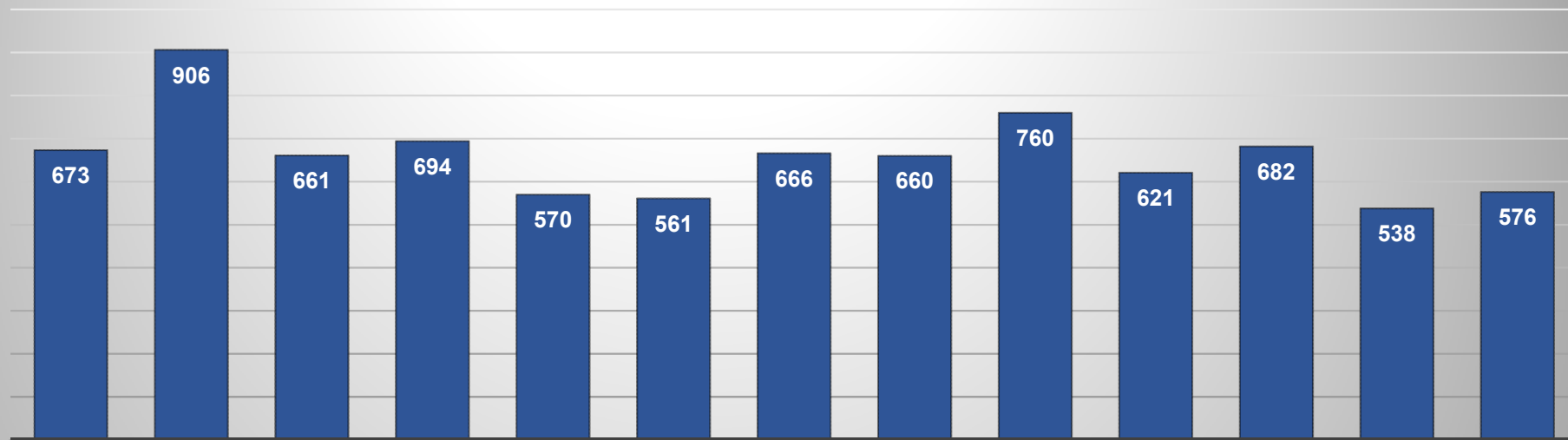
Unsubstantiated



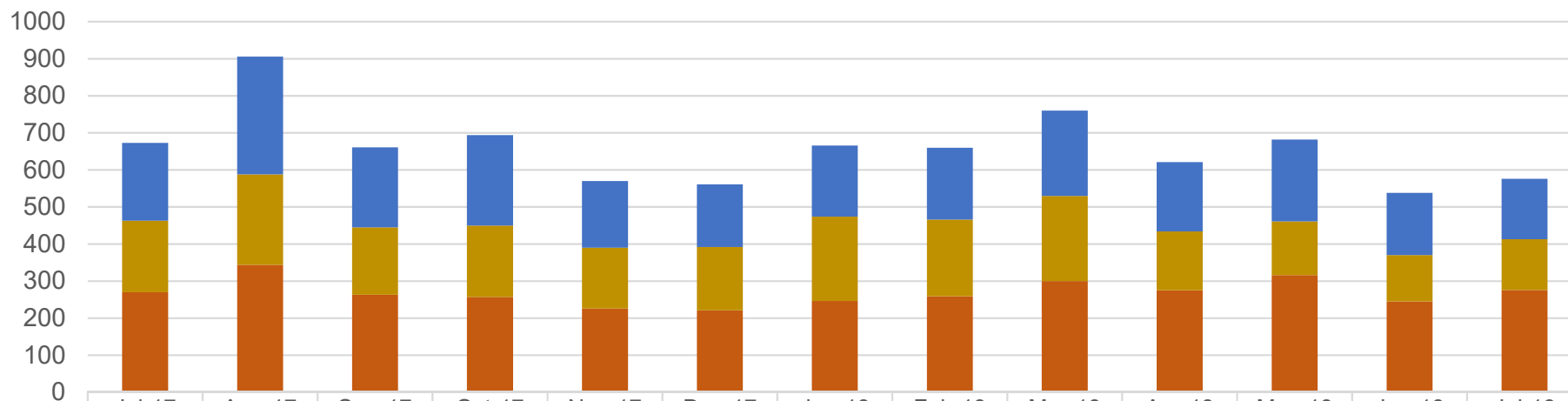
Outcome IV: Subsequent Case-Types of Investigations (July 2017 – July 2018)

DIVISION OF FAMILY & CHILDREN SERVICES

Substantiated:



	Jul-17	Aug-17	Sep-17	Oct-17	Nov-17	Dec-17	Jan-18	Feb-18	Mar-18	Apr-18	May-18	Jun-18	Jul-18
■ Substantiated	673	906	661	694	570	561	666	660	760	621	682	538	576



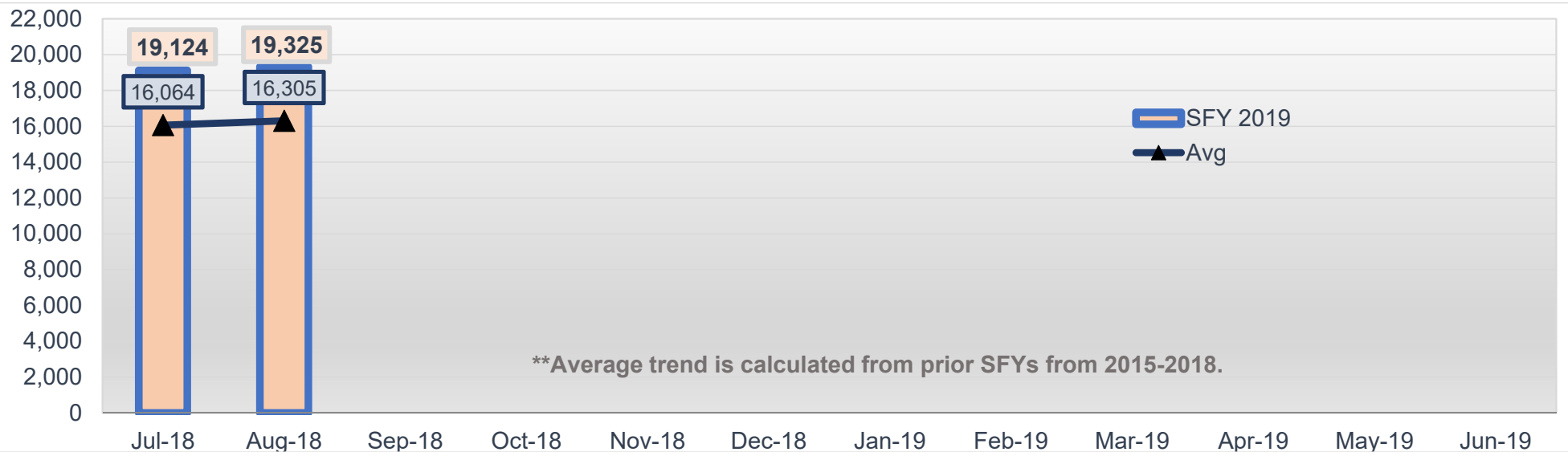
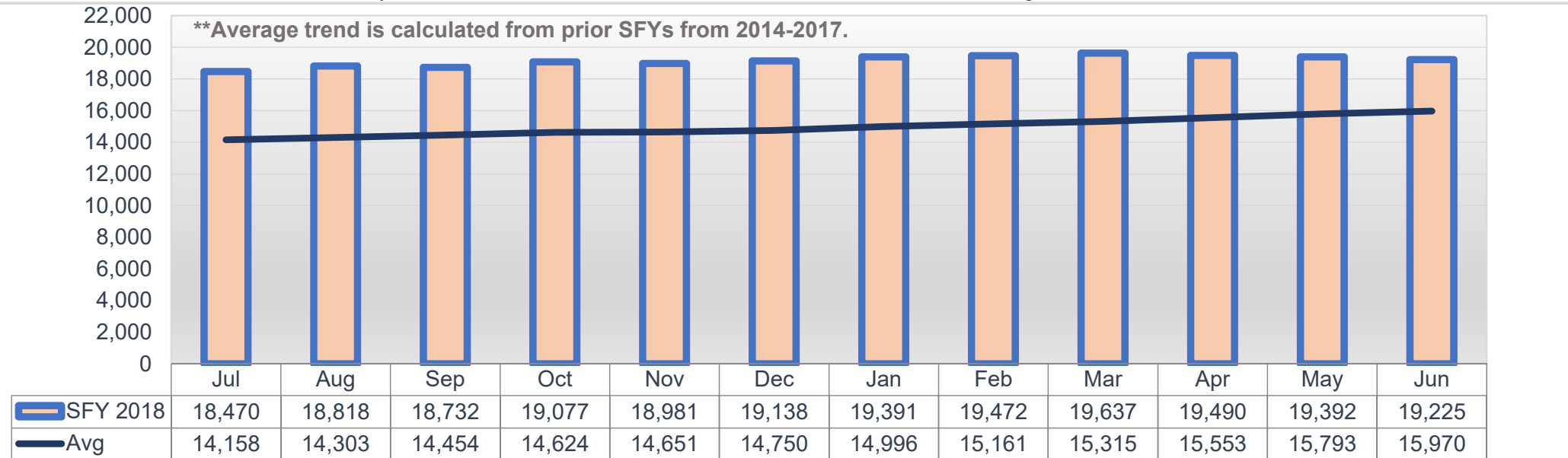
	Jul-17	Aug-17	Sep-17	Oct-17	Nov-17	Dec-17	Jan-18	Feb-18	Mar-18	Apr-18	May-18	Jun-18	Jul-18
■ Family Preservation	210	318	216	244	180	169	192	194	230	187	221	168	163
■ Foster Care	193	244	182	193	164	171	228	207	230	159	145	125	137
■ Closed Investigation	270	344	263	257	226	221	246	259	300	275	316	245	276

Outcome IV: Subsequent Case-Types of Investigations (July 2017 – July 2018)

DIVISION OF FAMILY & CHILDREN SERVICES

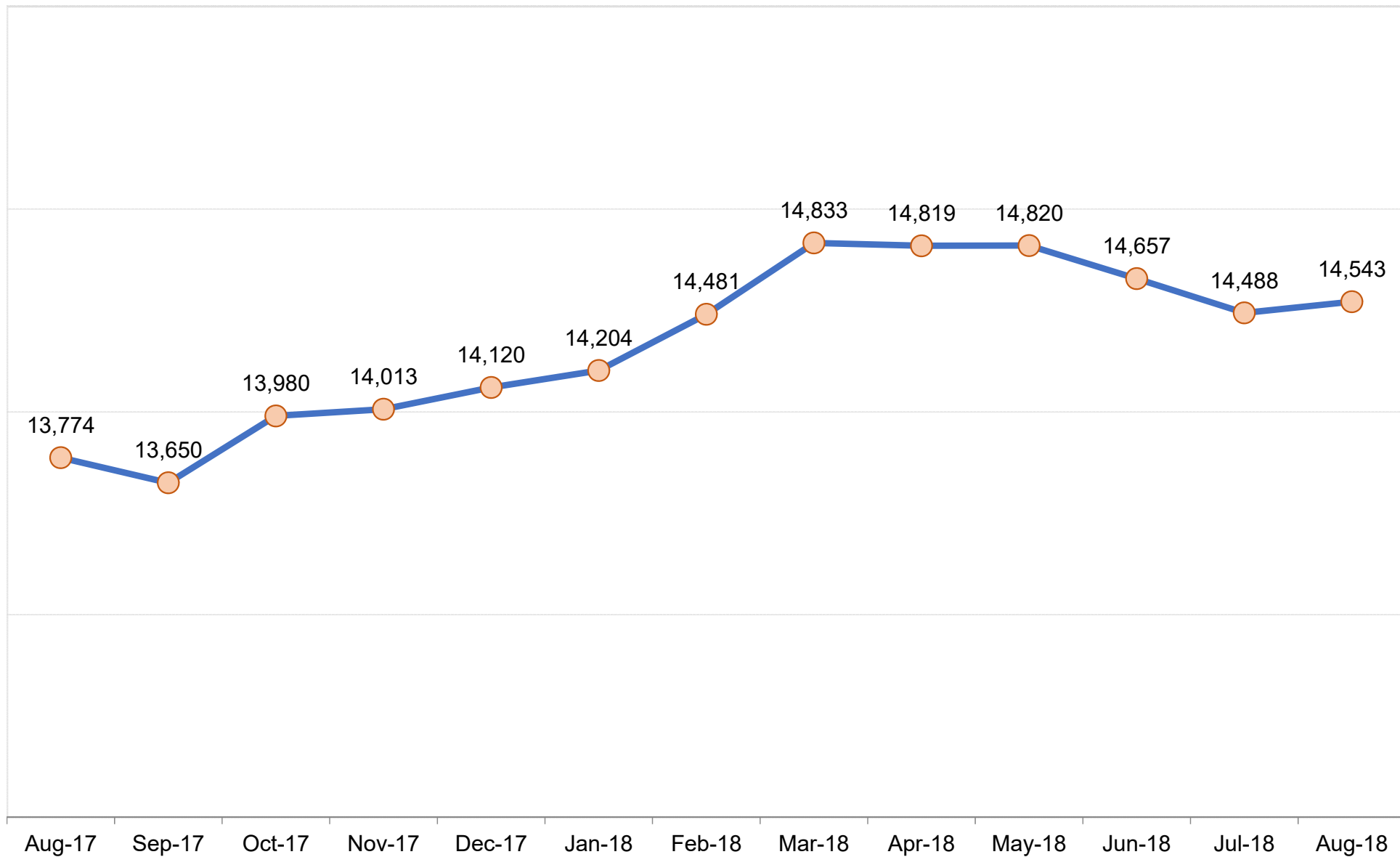
How many children were involved placement services for each month during the State Fiscal Year?

The average trend for the past four years shows a gradual increase (low slope) in cases. The placement services include continued collaboration with families after out of home care may have ended as well as those who are in out of home care with DFCS Age 0 - 21.



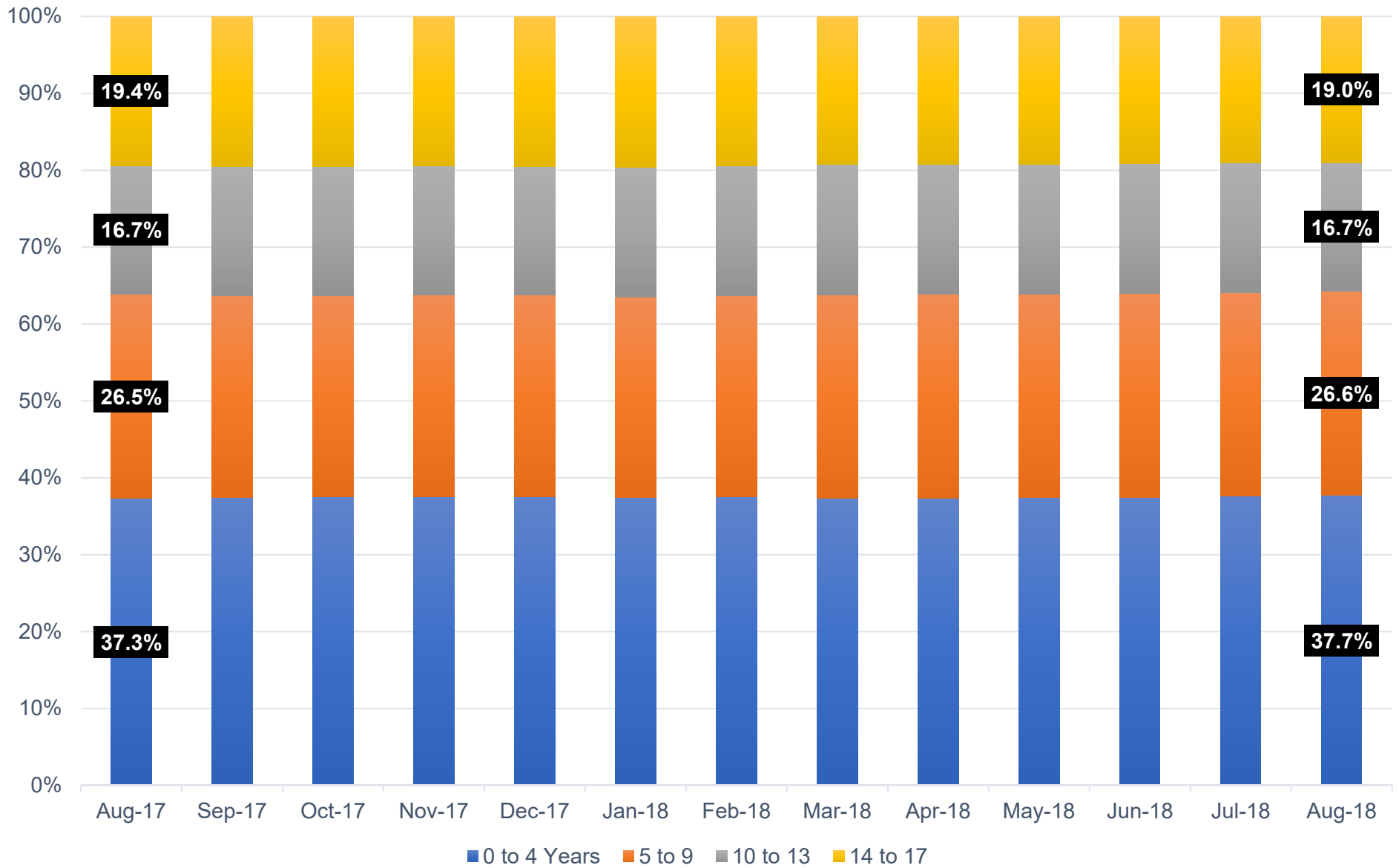
Outcome V: Number of Children in Placement Services (State Fiscal Year 2019 To Date)

How many children were in Foster Care under the age of 18?



DIVISION OF FAMILY & CHILDREN SERVICES

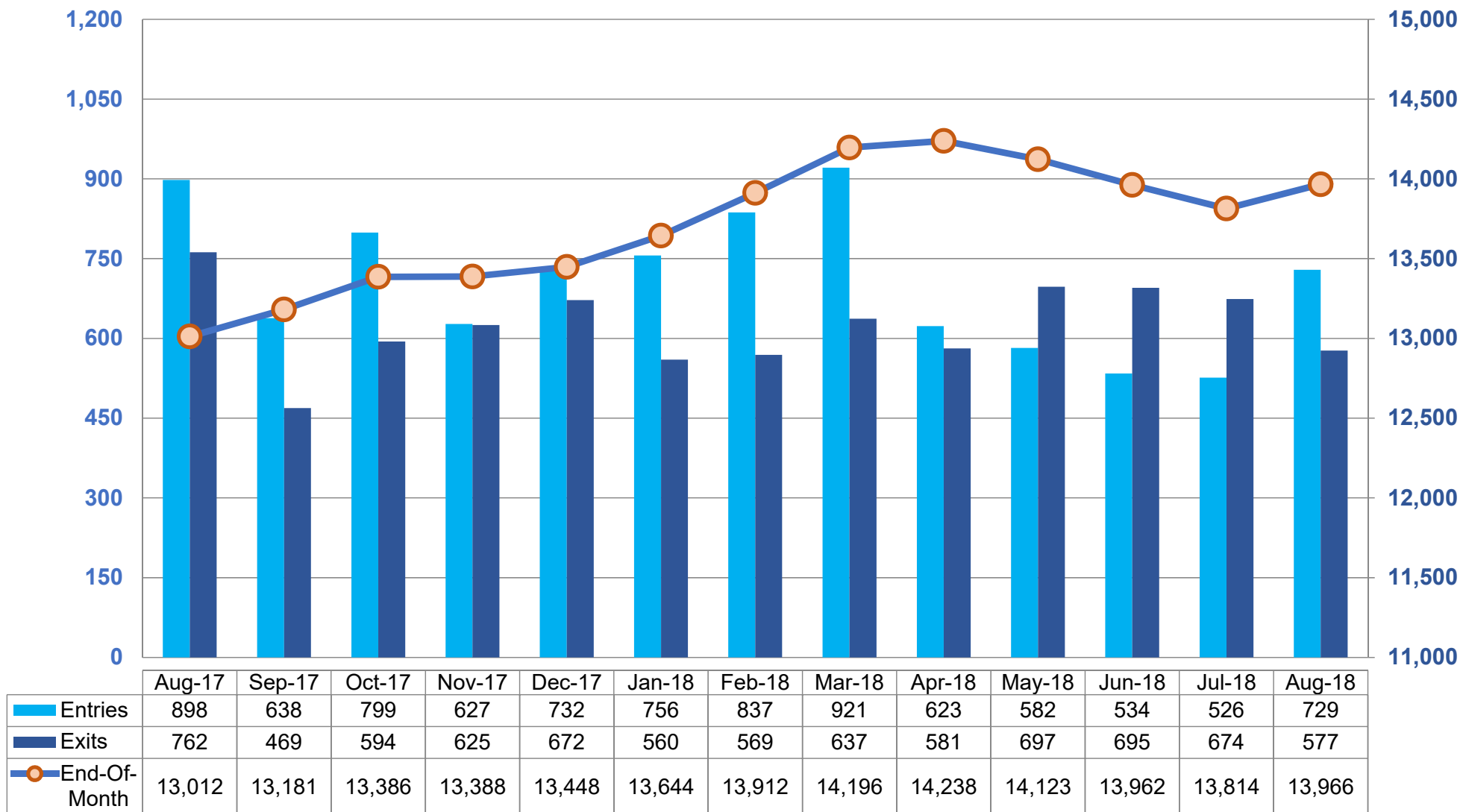
Has the age distribution of the foster population changed much over the last year?



Outcome VI-A: Children in DFCS Custody Under the Age of 18 by Age Group, (August 2017 – August 2018)

DIVISION OF FAMILY & CHILDREN SERVICES

How many children are moving in and out of Foster Care? How many remain in care on the last day?

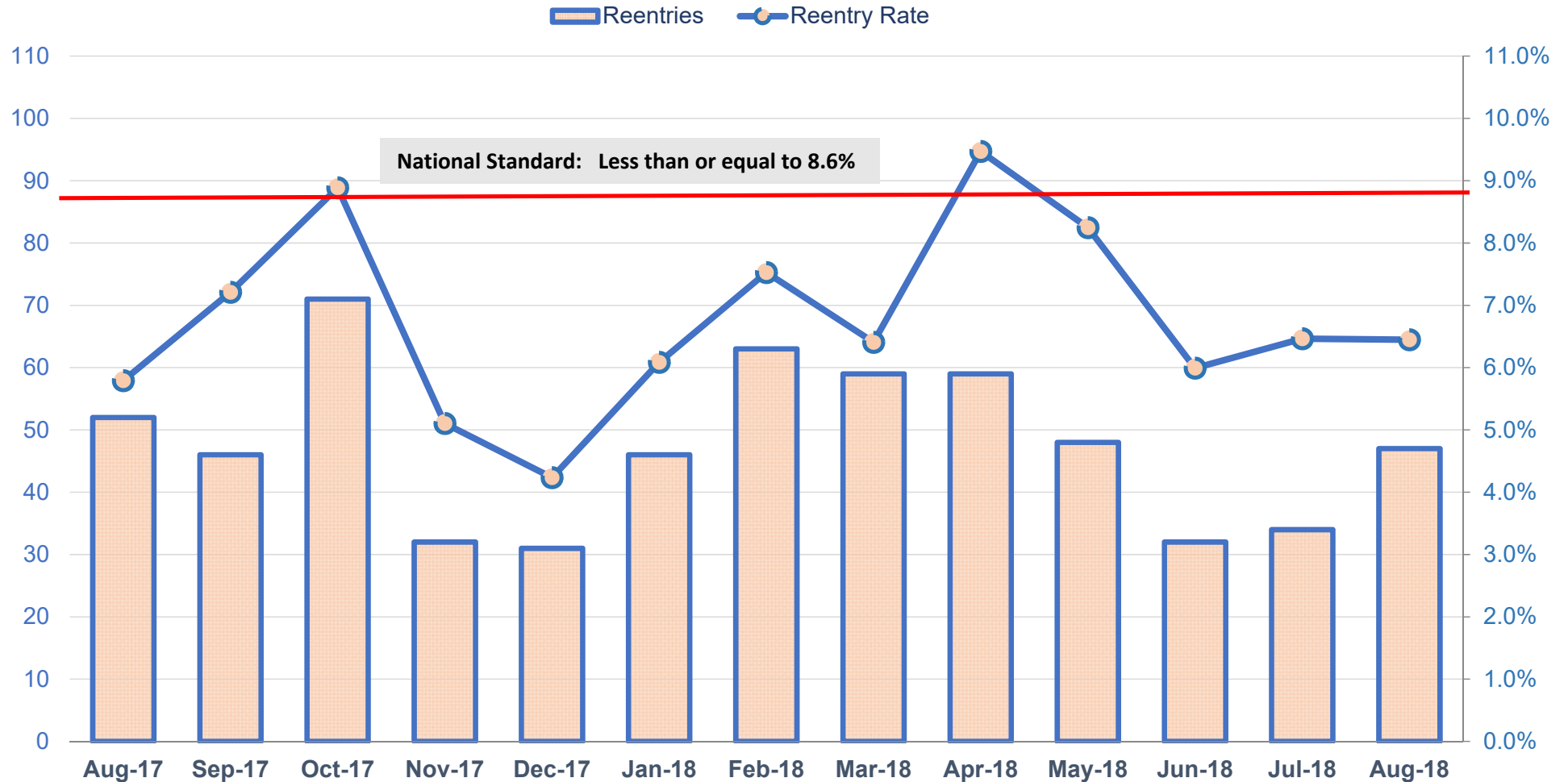


Outcome VII: Comparison of Foster Care Entries and Exits (August 2017 – August 2018)

**Reentries that occur within the same month are not double counted in the entries and exits on this chart. This chart represents unique population and movement into custody during the month.

DIVISION OF FAMILY & CHILDREN SERVICES

How many children were in a prior episode within twelve months of the current episode?

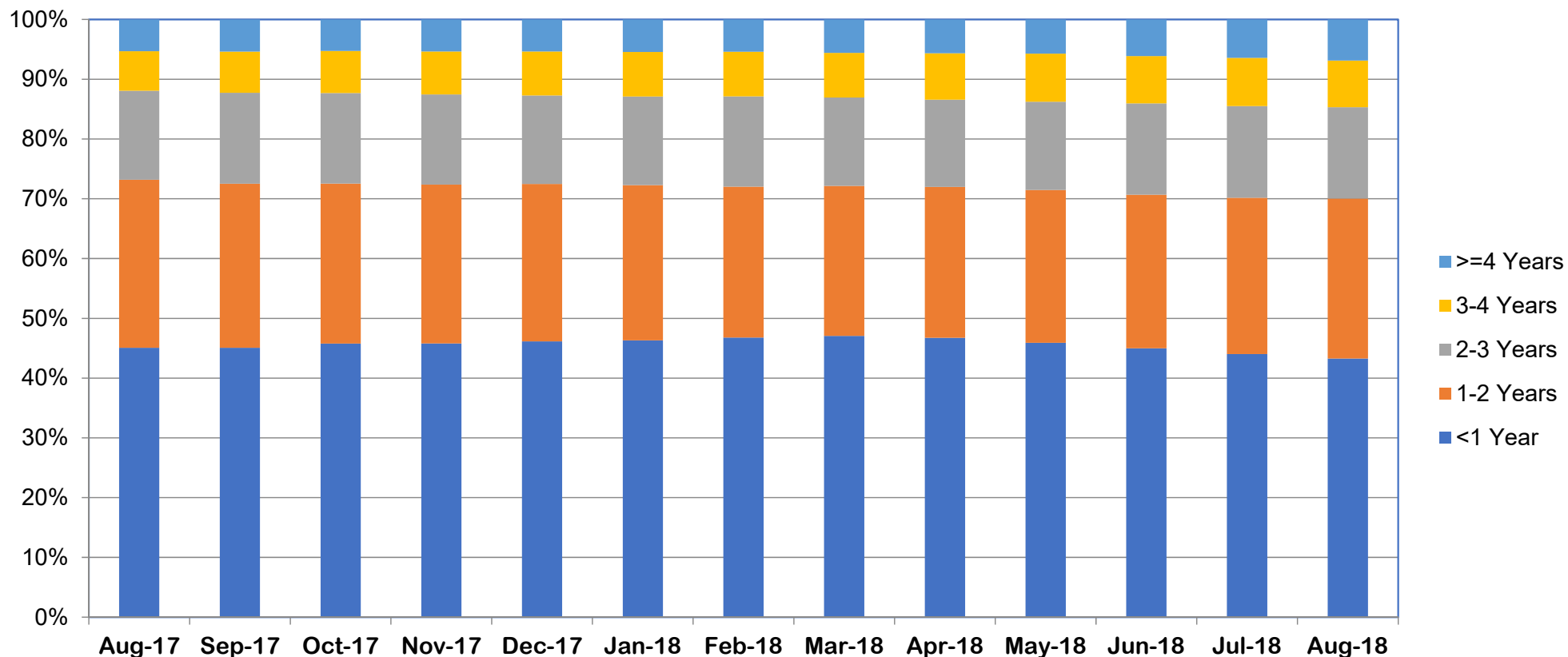


Aug-17	Sep-17	Oct-17	Nov-17	Dec-17	Jan-18	Feb-18	Mar-18	Apr-18	May-18	Jun-18	Jul-18	Aug-18
52	46	71	32	31	46	63	59	59	48	32	34	47
5.8%	7.2%	8.9%	5.1%	4.2%	6.1%	7.5%	6.4%	9.5%	8.2%	6.0%	6.5%	6.4%

Outcome VIII: Foster Care Re-Entries (August 2017 – August 2018)

DIVISION OF FAMILY & CHILDREN SERVICES

What percentage of foster children have been in care for less than a year, less than 2 years . . . each month?

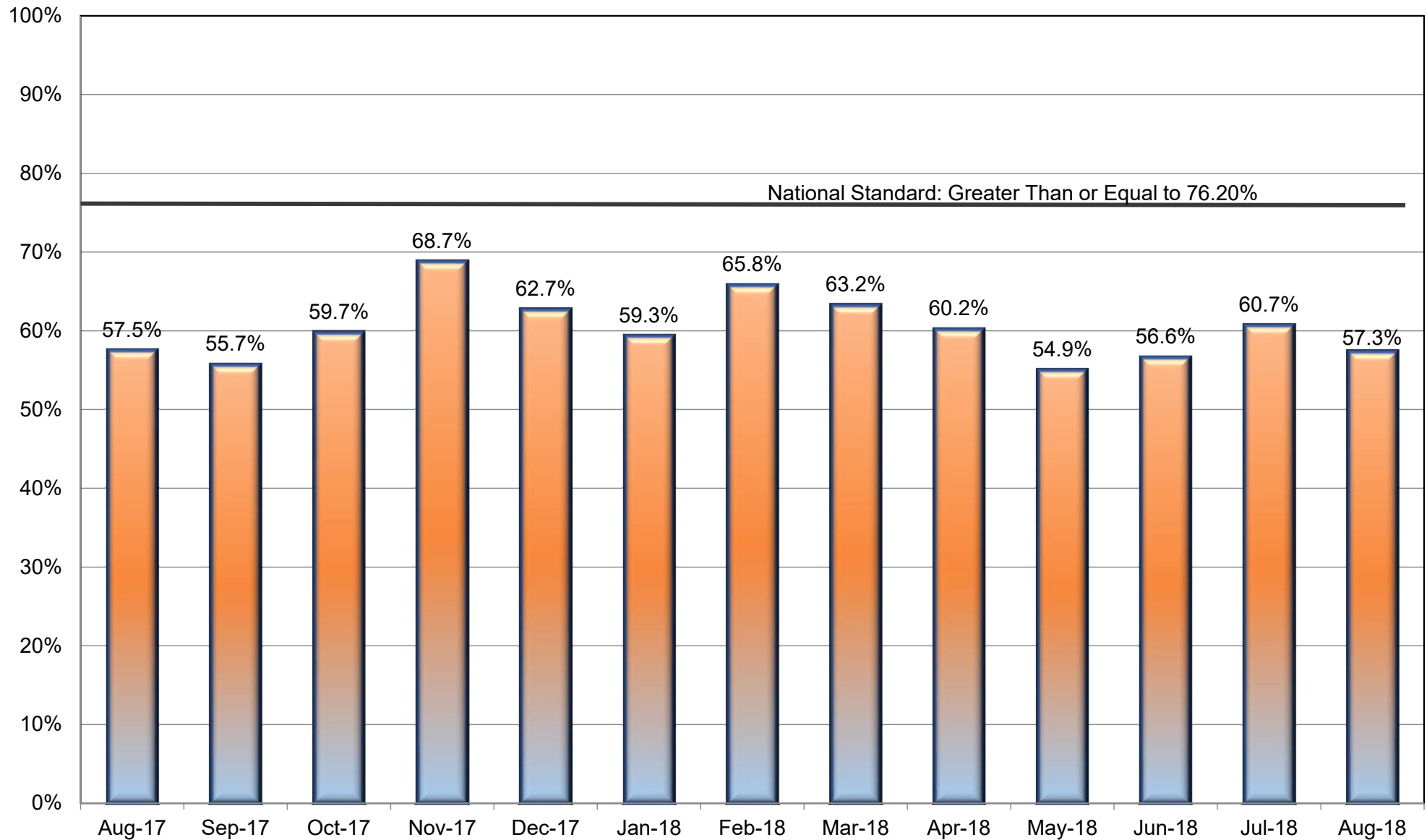


	Aug-17	Sep-17	Oct-17	Nov-17	Dec-17	Jan-18	Feb-18	Mar-18	Apr-18	May-18	Jun-18	Jul-18	Aug-18
>=4 Years	5.3%	5.4%	5.3%	5.4%	5.4%	5.4%	5.4%	5.4%	5.6%	5.7%	5.7%	6.1%	6.9%
3 - <4 Years	6.6%	6.9%	7.0%	7.2%	7.3%	7.4%	7.5%	7.4%	7.8%	8.0%	7.9%	8.1%	7.8%
2 - <3 Years	14.9%	15.2%	15.2%	15.1%	14.8%	14.8%	15.1%	14.8%	14.6%	14.8%	15.3%	15.3%	15.3%
1 - <2 Years	28.1%	27.5%	26.8%	26.6%	26.4%	26.0%	25.3%	25.1%	25.3%	25.6%	25.7%	26.1%	26.8%
<1 Year	45.1%	45.1%	45.8%	45.8%	46.1%	46.3%	46.8%	47.1%	46.7%	45.9%	45.0%	44.0%	43.3%

Outcome IX: Foster Care Length of Stay (August 2017 – August 2018)

DIVISION OF FAMILY & CHILDREN SERVICES

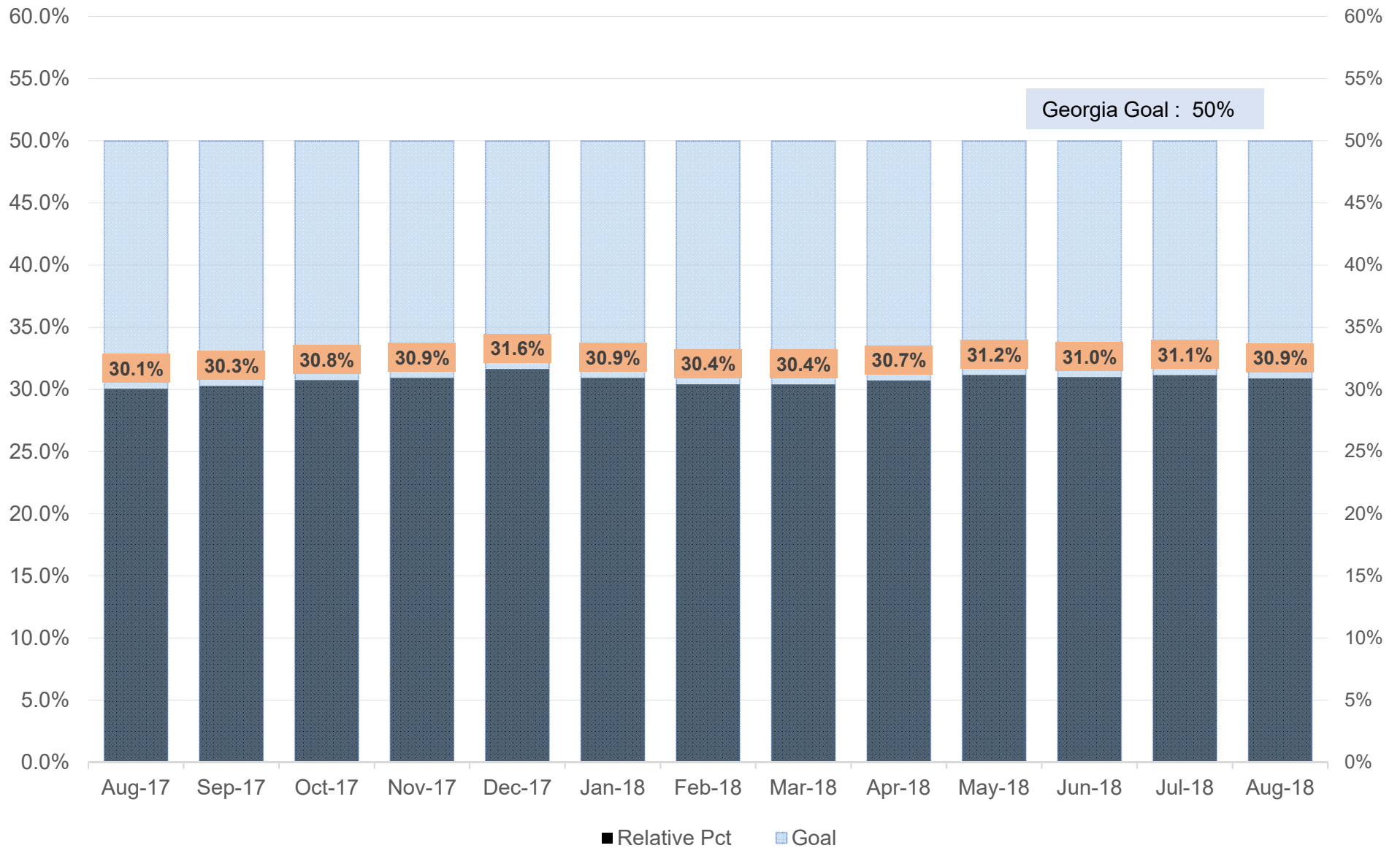
What percentage of reunifications occurred within twelve (12) months of the child entering foster care?



Outcome X: Length of Time to Reunification (August 2017 – August 2018)

DIVISION OF FAMILY & CHILDREN SERVICES

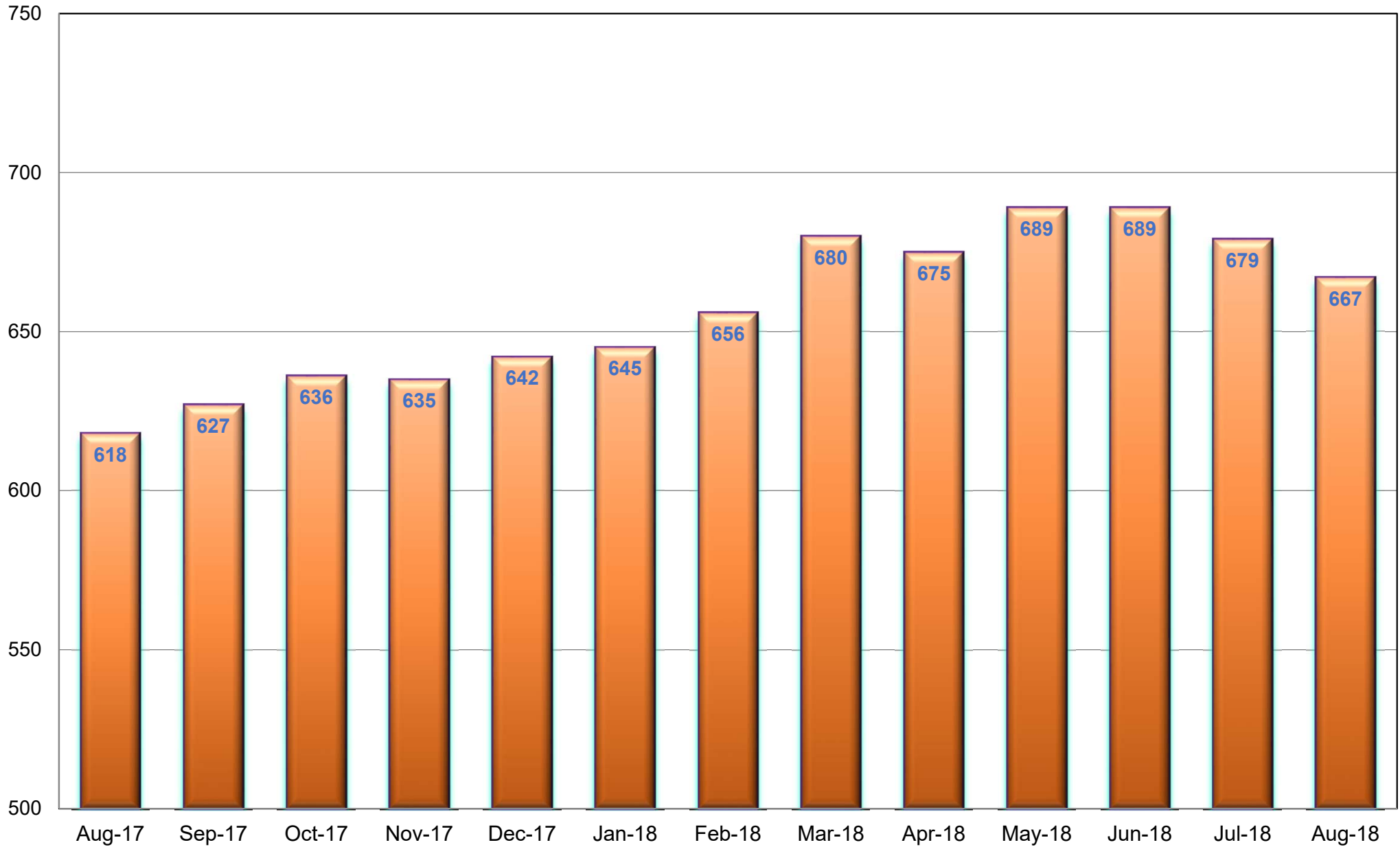
What percentage of children in Foster Care were placed with a relative during the month?



Outcome XI: Percent of Children Placed with Relatives (August 2017 – August 2018)

DIVISION OF FAMILY & CHILDREN SERVICES

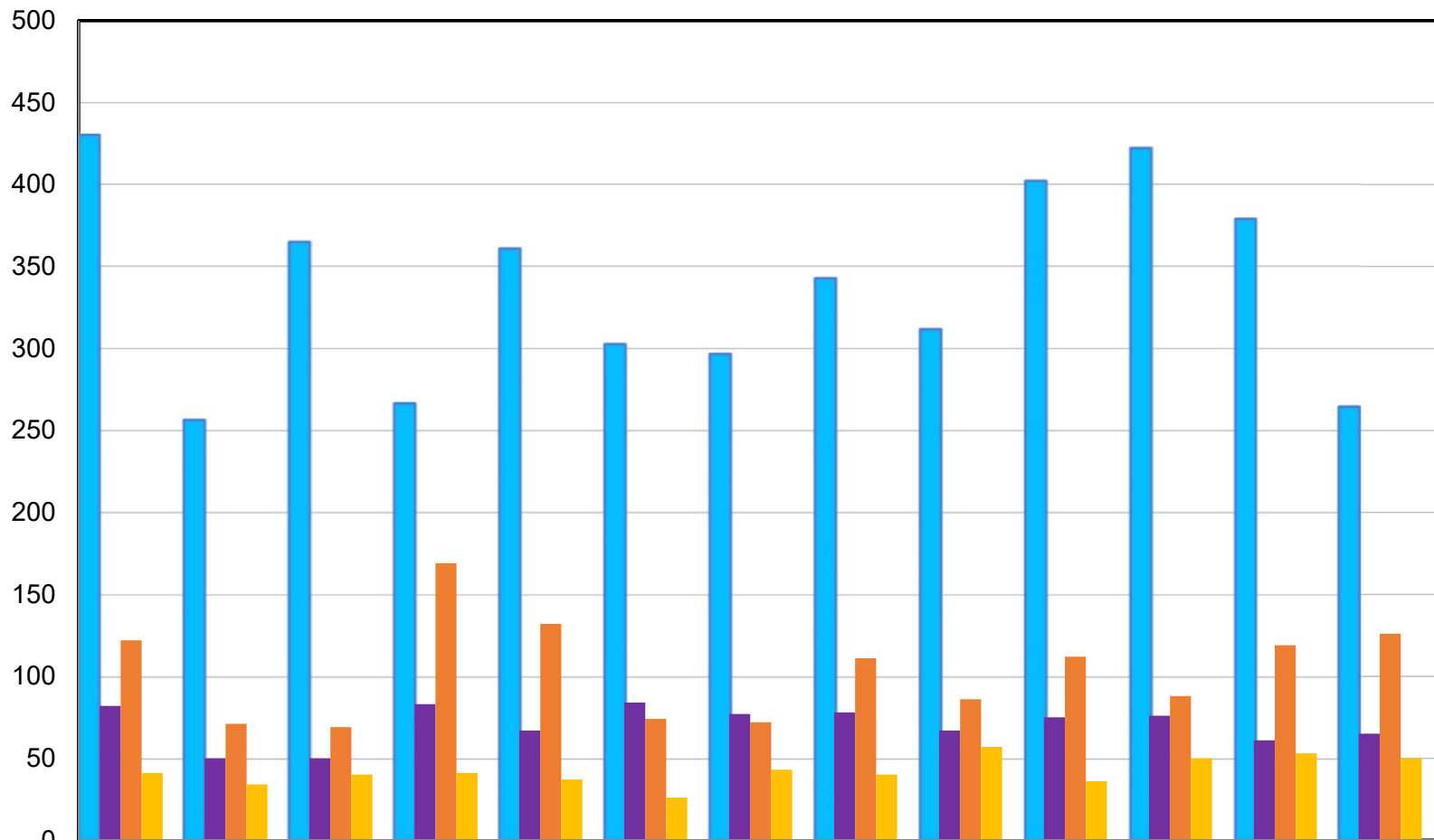
How many children remained in Foster Care after the age of 18?



Outcome XII: Extended Youth Services (August 2017 – August 2018)

DIVISION OF FAMILY & CHILDREN SERVICES

How many children in Foster Care were discharged to a positive permanency during the month?

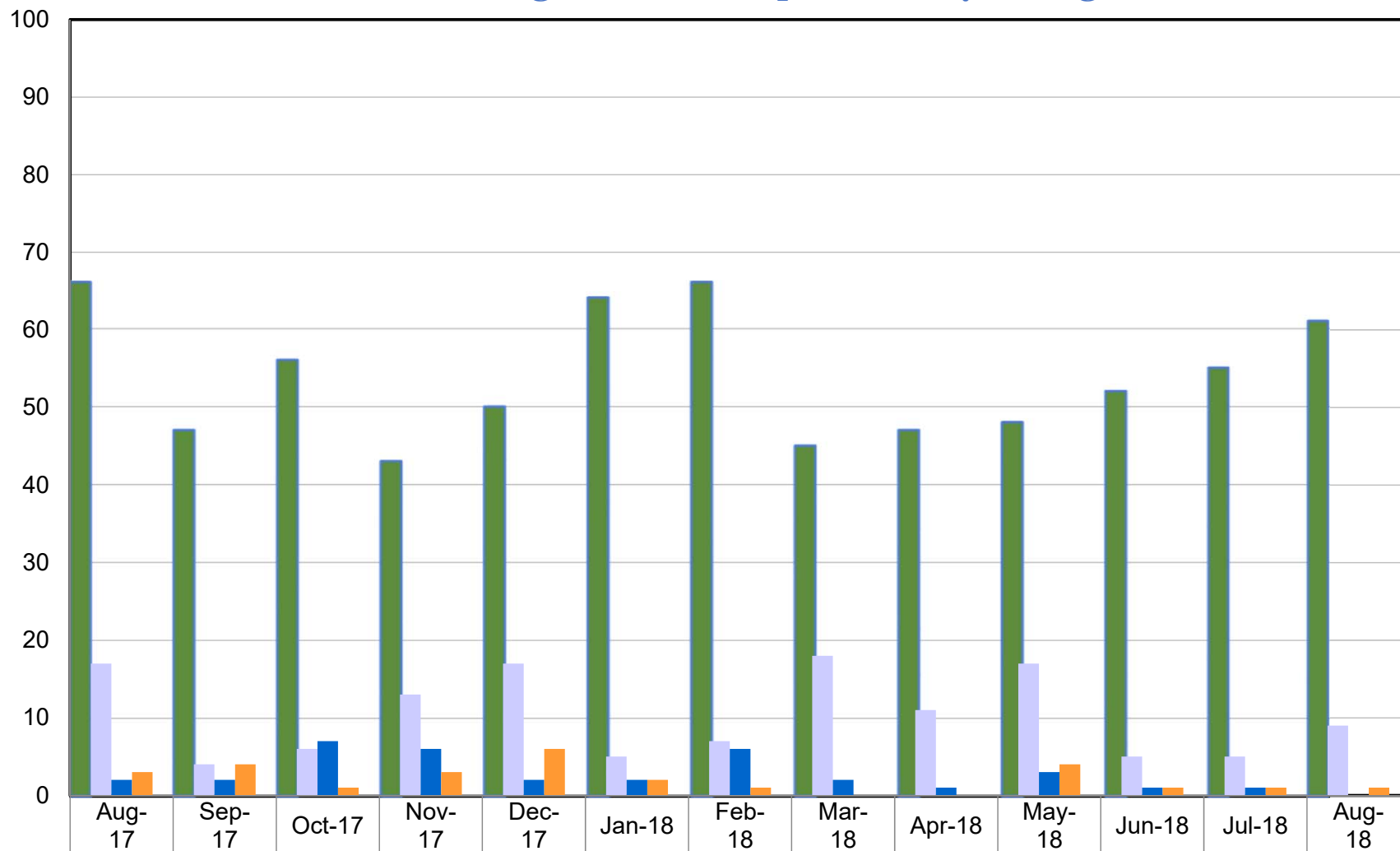


■ Reunification	430	257	365	267	361	303	297	343	312	402	422	379	265
■ Living With Other Relative(s)	82	50	50	83	67	84	77	78	67	75	76	61	65
■ Finalized Adoption	122	71	69	169	132	74	72	111	86	112	88	119	126
■ Guardianship	41	34	40	41	37	26	43	40	57	36	50	53	50
Positive Permanency	675	412	524	560	597	487	489	572	522	625	636	612	506

Outcome XIII: Number of Discharges (August 2017 – August 2018)

DIVISION OF FAMILY & CHILDREN SERVICES

How many children in Foster Care were discharged to another permanency during the month?

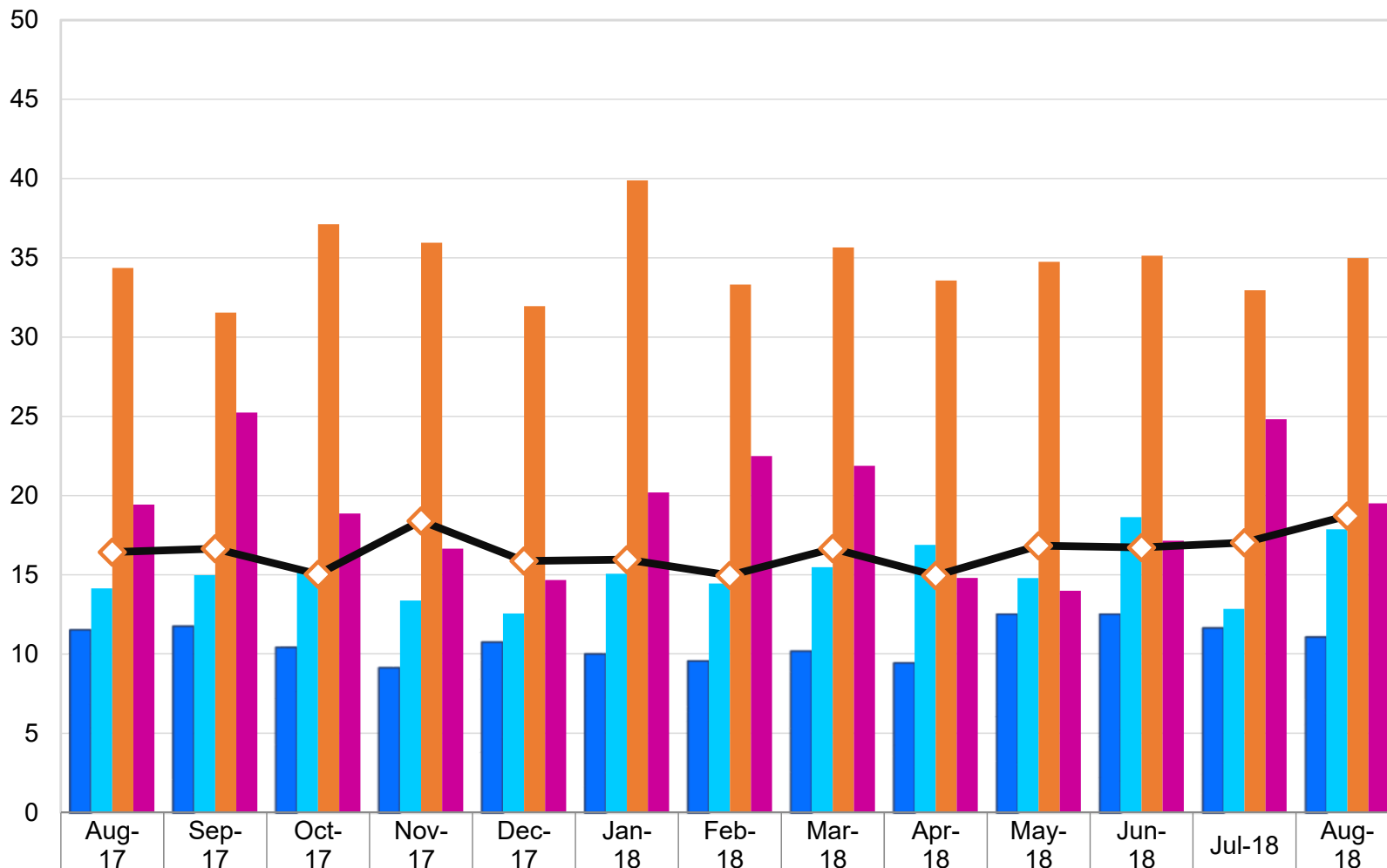


■ Emancipation	66	47	56	43	50	64	66	45	47	48	52	55	61
■ Transfer to Another Agency	17	4	6	13	17	5	7	18	11	17	5	5	9
■ Runaway	2	2	7	6	2	2	6	2	1	3	1	1	0
■ Death of Child	3	4	1	3	6	2	1	0	0	4	1	1	1
■ Other Permanency	88	57	70	65	75	73	80	65	59	72	59	62	71

Outcome XIII: Number of Discharges (August 2017 – August 2018)

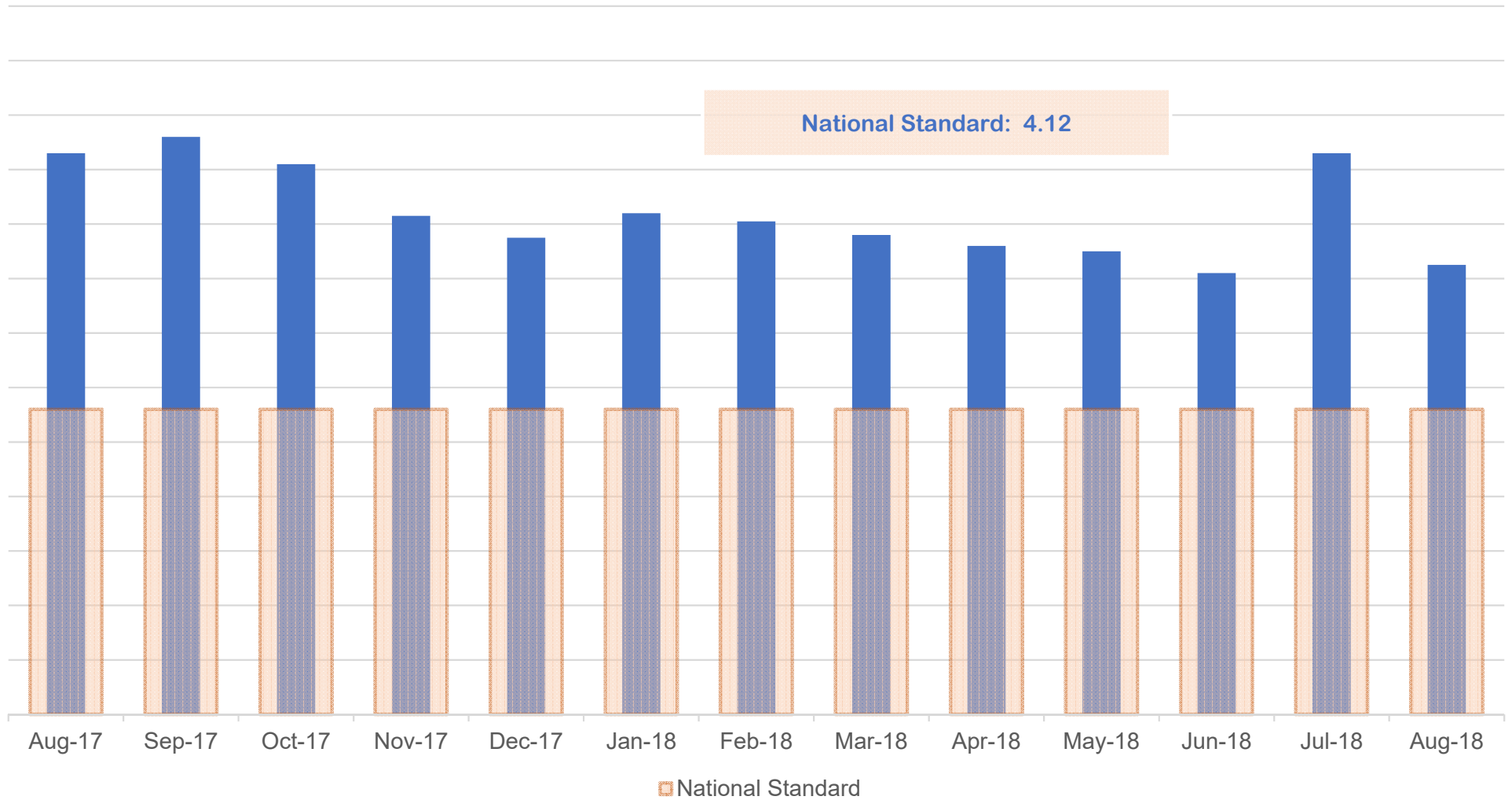
DIVISION OF FAMILY & CHILDREN SERVICES

What is the average time in months for a foster child to reach positive permanency?



	Aug-17	Sep-17	Oct-17	Nov-17	Dec-17	Jan-18	Feb-18	Mar-18	Apr-18	May-18	Jun-18	Jul-18	Aug-18
1-Reunification	11.5	11.7	10.4	9.1	10.7	10.0	9.6	10.2	9.4	12.5	12.5	11.6	11.0
2-Living with Relatives	14.1	15.0	15.2	13.4	12.6	15.1	14.5	15.5	16.9	14.8	18.6	12.9	17.9
3-Adoption	34.4	31.5	37.1	36.0	32.0	39.9	33.3	35.7	33.6	34.8	35.1	33.0	35.0
5-Guardianship	19.4	25.2	18.9	16.7	14.7	20.2	22.5	21.9	14.8	14.0	17.2	24.8	19.5
Positive Permanency	16.4	16.7	15.0	18.4	15.9	16.0	15.0	16.7	15.0	16.8	16.7	17.0	18.7

How is the state of Georgia performing on the federal measure of Placement Stability?



Aug-17	Sep-17	Oct-17	Nov-17	Dec-17	Jan-18	Feb-18	Mar-18	Apr-18	May-18	Jun-18	Jul-18	Aug-18
5.06	5.12	5.02	4.83	4.75	4.84	4.81	4.76	4.72	4.70	4.62	5.06	4.65

Appendices

APPENDIX A

Regional Chart of Outcome VI

**Children in DFCS Custody Under the Age of 18
(August 2017 – August 2018)**

DIVISION OF FAMILY & CHILDREN SERVICES

Outcome VI: Children in DFCS Custody Under the Age of 18 (By Region) (August 2017 – August 2018)

Region	Aug-17	Sep-17	Oct-17	Nov-17	Dec-17	Jan-18	Feb-18	Mar-18	Apr-18	May-18	Jun-18	Jul-18	Aug-18
1	1,359	1,339	1,379	1,380	1,421	1,438	1,461	1,519	1,529	1,499	1,476	1,431	1,454
2	819	812	830	865	877	878	921	974	978	990	982	1,010	1,008
3	998	960	1,004	988	995	974	985	983	971	956	961	954	962
4	1,126	1,128	1,128	1,128	1,146	1,124	1,124	1,143	1,141	1,165	1,166	1,136	1,125
5	1,142	1,131	1,146	1,176	1,162	1,155	1,189	1,207	1,223	1,223	1,199	1,180	1,194
6	733	734	743	767	763	762	775	778	772	768	745	734	733
7	515	509	539	560	581	611	651	695	715	712	718	729	755
8	707	700	706	700	712	718	737	742	744	746	749	760	768
9	586	580	592	579	578	580	590	593	591	591	578	575	569
10	759	747	753	759	785	791	776	770	774	758	755	749	755
11	1,180	1,175	1,191	1,166	1,193	1,192	1,218	1,264	1,260	1,260	1,251	1,257	1,260
12	876	889	923	933	926	957	974	1,003	998	1,009	1,000	982	982
13	1,404	1,379	1,447	1,413	1,399	1,410	1,430	1,485	1,450	1,463	1,403	1,373	1,357
14	1,570	1,567	1,599	1,599	1,582	1,614	1,650	1,677	1,673	1,680	1,674	1,618	1,621
Statewide	13,774	13,650	13,980	14,013	14,120	14,204	14,481	14,833	14,819	14,820	14,657	14,488	14,543

APPENDIX B

Regional Chart of Outcome XIV

**Placement Stability Performance Coefficient
(August 2017 – August 2018)**

National Standard = 4.12

Desired Goal to Meet the PIP = 6.01

DIVISION OF FAMILY & CHILDREN SERVICES

Outcome VI: Placement Stability for Children in DFCS Custody Under the Age of 18 (By Region) (August 2017 – August 2018)

Region	Aug-17	Sep-17	Oct-17	Nov-17	Dec-17	Jan-18	Feb-18	Mar-18	Apr-18	May-18	Jun-18	Jul-18	Aug-18
1	5.21	5.40	5.69	5.74	5.66	5.53	5.73	5.57	5.59	5.49	5.39	5.25	5.23
2	5.63	6.02	5.77	5.49	5.10	5.27	5.47	5.63	5.53	5.38	5.33	5.18	5.20
3	4.80	4.66	4.89	4.78	4.58	4.71	4.84	4.81	4.95	4.96	4.72	4.94	4.77
4	4.19	4.37	4.40	4.68	4.46	4.15	4.13	4.17	3.68	3.58	3.41	3.41	3.36
5	5.26	5.23	5.46	5.30	5.31	5.19	5.09	5.12	5.08	5.28	5.27	5.19	5.24
6	4.20	4.44	4.12	4.00	3.67	3.79	3.76	3.83	3.90	3.65	3.84	3.81	3.97
7	3.74	3.55	3.34	3.37	3.10	2.77	3.01	2.96	3.11	3.16	3.11	3.06	3.07
8	4.06	3.32	3.47	3.50	3.31	3.08	2.97	2.94	2.73	2.99	3.12	3.05	3.62
9	3.48	3.54	3.47	3.26	3.35	3.46	3.73	3.55	3.46	3.04	3.39	3.72	3.71
10	4.72	4.22	4.05	3.92	3.98	3.90	4.07	3.77	3.40	3.33	3.05	3.05	2.79
11	3.95	3.95	4.09	3.84	3.69	3.51	3.77	4.09	4.14	4.10	4.15	4.04	4.01
12	4.51	4.34	4.73	4.88	4.88	4.99	4.94	4.85	4.51	4.46	4.44	4.41	4.30
13	7.55	7.32	7.34	7.10	6.67	6.58	6.63	6.36	6.37	6.35	6.34	6.11	6.38
14	5.83	6.05	6.14	5.93	5.72	5.73	5.76	5.89	6.16	6.18	6.29	6.10	6.22
Statewide	5.06	5.12	5.02	4.83	4.75	4.84	4.81	4.76	4.72	4.70	4.62	5.06	4.65