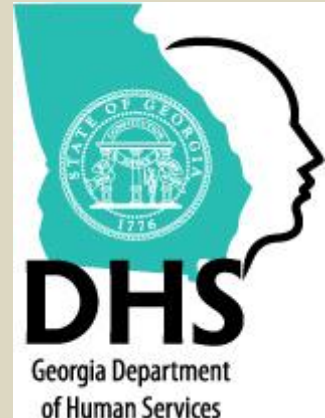


Family Independence

Outcome Measures & Results

May 2014

(Reflects data as of April 30, 2014)



**Data Analysis, Accountability,
Research & Evaluation**

Definitions and Data Sources

Pages

ChildCare: Number of Children

1

Includes children active during the month

Source: MAXSTAR - Active Caseload Report I, Federal ACF-801 Data Submission Summary Data Assessment Report

ChildCare: Number of Applications

1

Includes applications received during the month

Source: MAXSTAR - Active Caseload Report I - Compass Referrals, Active Caseload Report I - Non-Compass Referrals

TANF Cases (Total/Adult/Child Only)

2 - 3

Includes all cases active at some time during the month

Source: *Success FINAL TANF*

Food Stamp Cases

4

Includes all cases active at some time during the month

Source: *SUCCESS DMD6929I*

Medicaid Cases

4

Includes cases active at the end of the month

Source: *SUCCESS DMF8031I*

TANF Work Participation Rate

5

Of all the families with a Temporary Assistance to Needy Families (TANF) work requirement, the percentage of families that met the work requirement. **State Target: greater than or equal to 70%**

Source: *Success FINAL TANF*

Food Stamp Participation Rate

5

The ratio of number of food stamp persons over the estimated persons at or below 125% of the poverty level. **State Target: greater than or equal to 59.65%**

Source: *SUCCESS DMD6929I, US Census Bureau*

Medicaid (ABD) Standard of Promptness

6

Of all the Aged, Blind, Disabled Medicaid applications for benefits, the percentage that was completed within the mandated Standard of Promptness (SOP). **State Target: greater than or equal to 96.0%**

Source: *SUCCESS DMF8001I, DMF8007I, DMF8031I, DMF8032I, DMF8061I*

Medicaid (Family) Standard of Promptness

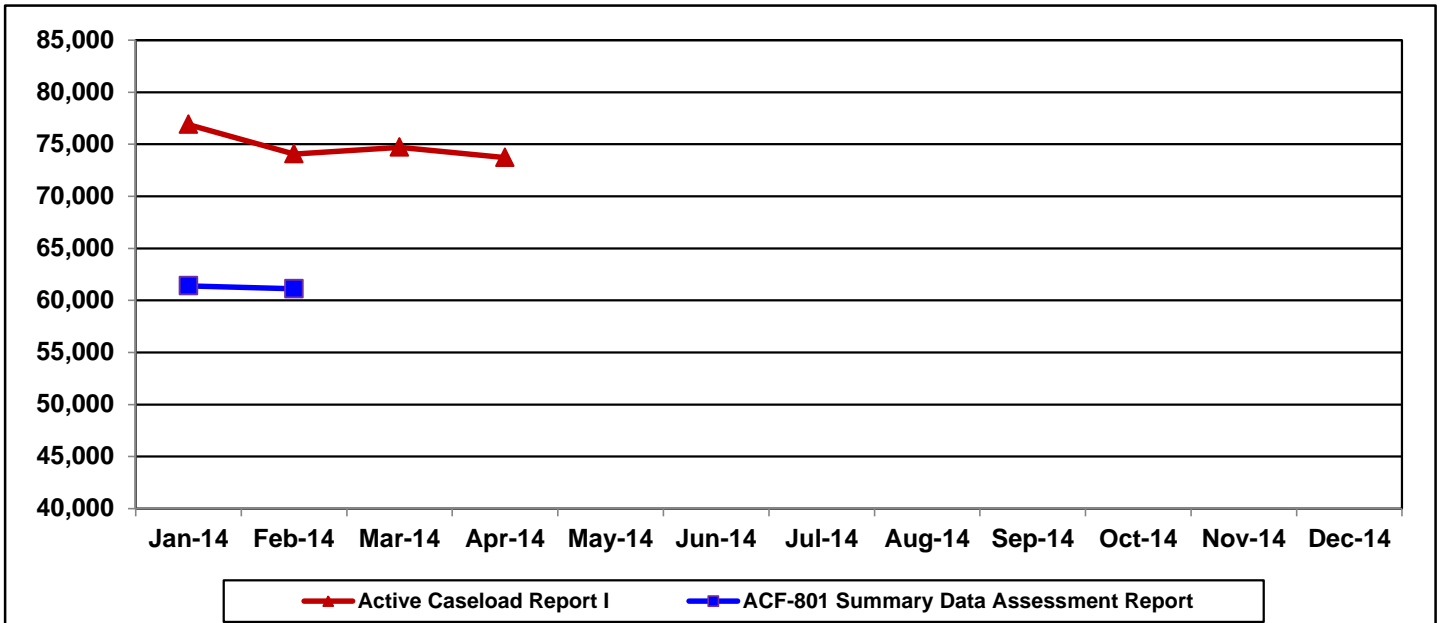
6

Of all the Family Medicaid applications for benefits, the percentage that was completed within the mandated Standard of Promptness (SOP). **State Target: greater than or equal to 96.0%**

Source: *SUCCESS DMF8001I, DMF8007I, DMF8031I, DMF8032I, DMF8061I*

ChildCare: Number of Children

Def: Includes children active during the month



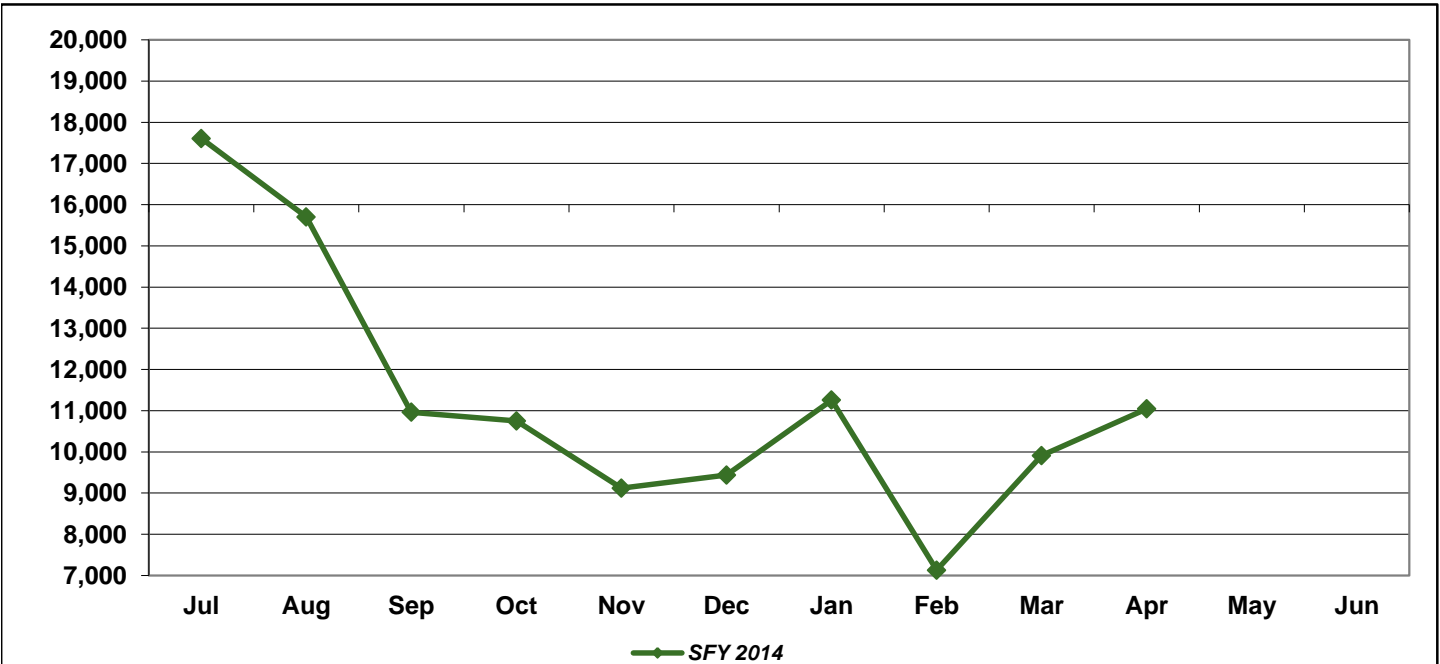
Source: MAXSTAR-Active Caseload Report I, Federal ACF-801 Data Submission Summary Data Assessment Report

Jan-14	Feb-14	Mar-14	Apr-14	May-14	Jun-14	Jul-14	Aug-14	Sep-14	Oct-14	Nov-14	Dec-14
76,893	74,067	74,713	73,718								
61,386	61,118										

Note: Active Caseload Report I is the interim number based on children active during the month. ACF-801 Summary Data Assessment Report is the updated report used for federal reporting and runs after a 3-month delay.

ChildCare: Number of Applications

Def: Includes application received during the month

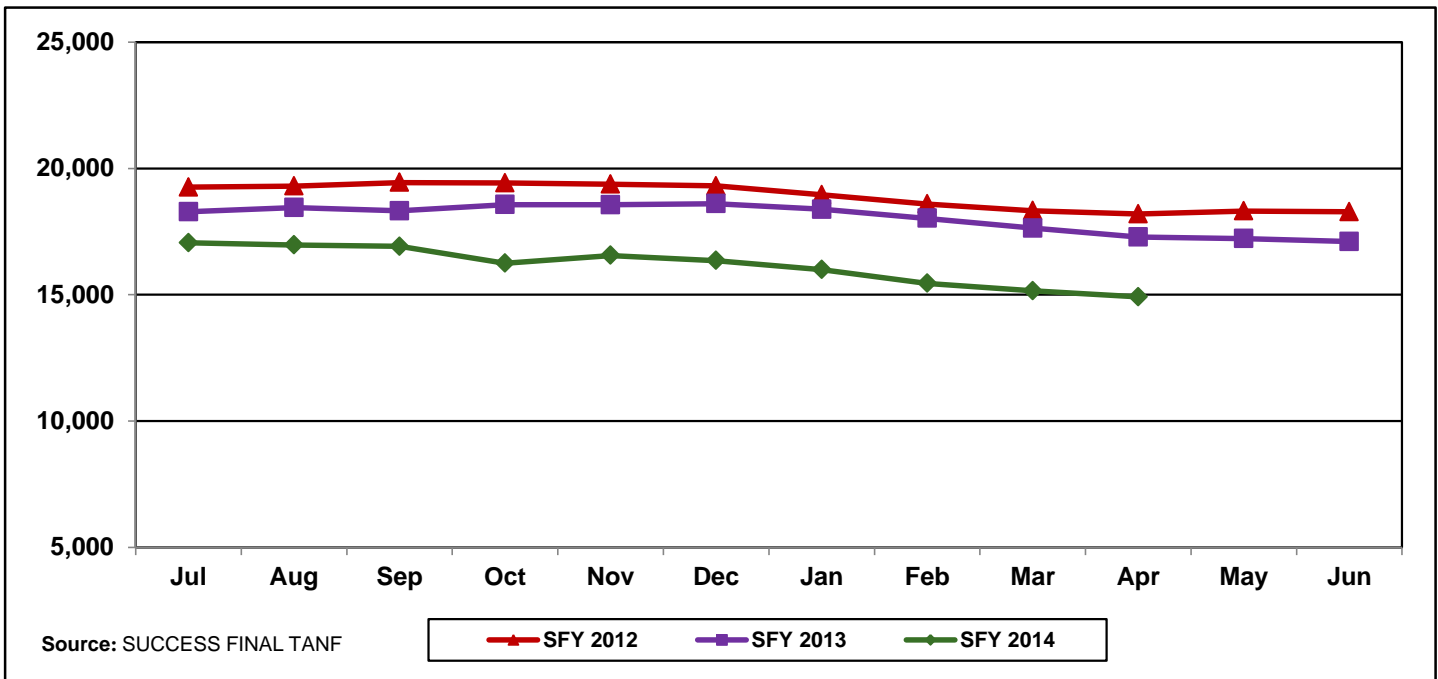


Source: MAXSTAR - Active Caseload Report-Compass Referrals, MAXSTAR-Active Caseload Report - Non-Compass Referrals

Jul	Aug	Sep	Oct	Nov	Dec	Jan	Feb	Mar	Apr	May	Jun
17,606	15,703	10,961	10,750	9,121	9,435	11,259	7,131	9,912	11,048		

TANF Cases

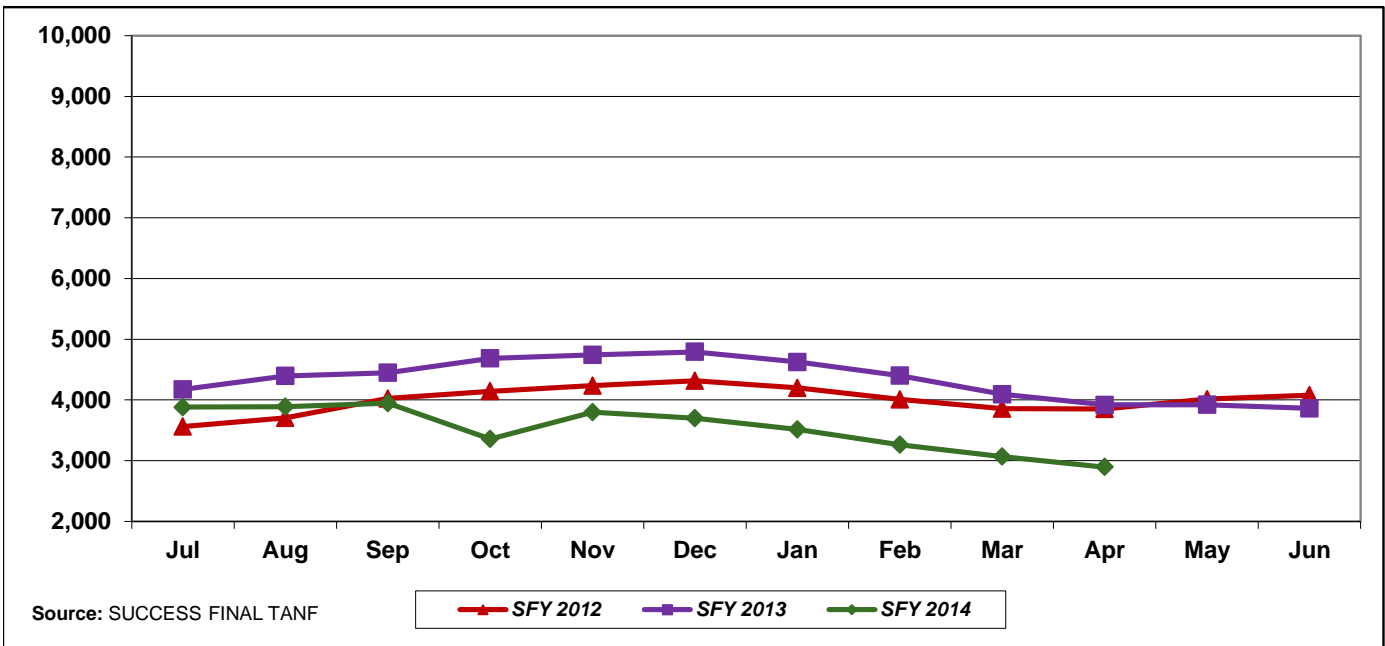
Def: Includes all cases active at some time during the month



Jul	Aug	Sep	Oct	Nov	Dec	Jan	Feb	Mar	Apr	May	Jun
19,256	19,301	19,444	19,423	19,379	19,306	18,957	18,594	18,329	18,194	18,314	18,286
18,283	18,452	18,324	18,567	18,559	18,603	18,381	18,025	17,638	17,285	17,226	17,109
17,057	16,970	16,913	16,251	16,557	16,353	15,992	15,452	15,154	14,915		

TANF Cases - Adult

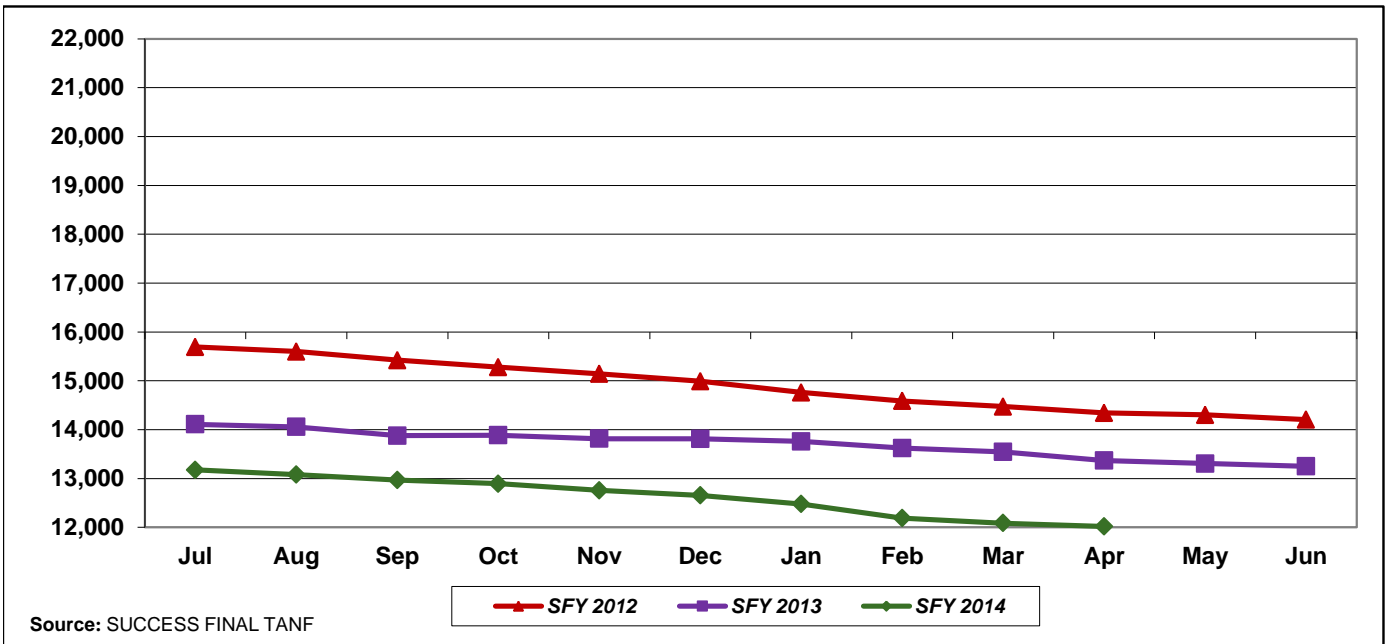
Def: Adult is defined as a work eligible individual. Includes all cases active at some time during the month.



Jul	Aug	Sep	Oct	Nov	Dec	Jan	Feb	Mar	Apr	May	Jun
3,563	3,702	4,023	4,143	4,234	4,315	4,197	4,008	3,856	3,851	4,013	4,079
4,173	4,397	4,449	4,683	4,744	4,792	4,624	4,401	4,094	3,918	3,920	3,861
3,881	3,890	3,945	3,358	3,800	3,698	3,516	3,262	3,068	2,895		

TANF Cases - Child Only

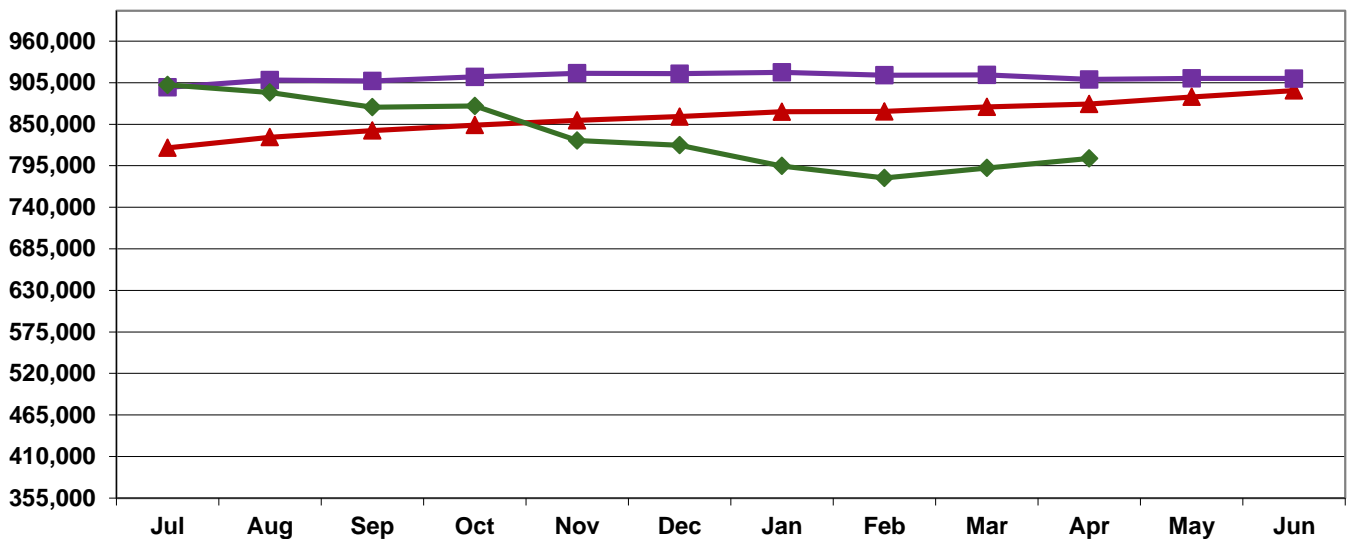
Def: There is no work eligible adult in the case. Includes all cases active at some time during the month.



Jul	Aug	Sep	Oct	Nov	Dec	Jan	Feb	Mar	Apr	May	Jun
15,693	15,599	15,421	15,280	15,145	14,991	14,760	14,586	14,473	14,343	14,301	14,207
14,110	14,055	13,875	13,884	13,815	13,811	13,757	13,624	13,544	13,367	13,306	13,248
13,176	13,080	12,968	12,893	12,757	12,655	12,476	12,190	12,086	12,020		

Food Stamp Cases

Def: Includes all cases active at some time during the month.



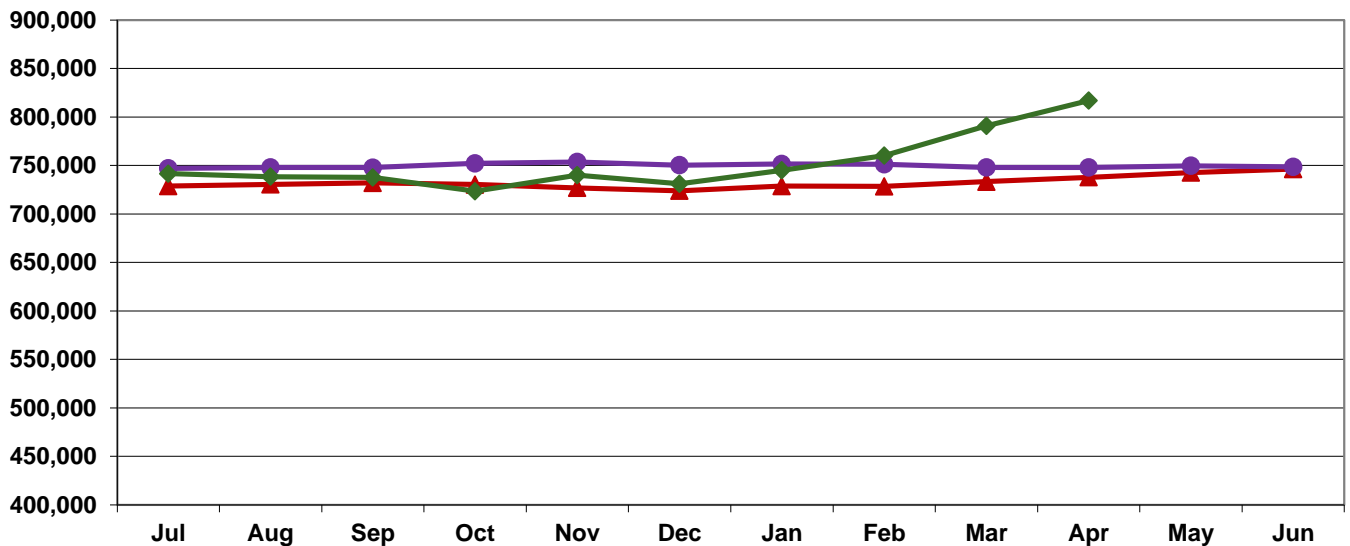
Source: SUCCESS DMD 6929I

▲ SFY 2012
 ■ SFY 2013
 ◆ SFY 2014

Jul	Aug	Sep	Oct	Nov	Dec	Jan	Feb	Mar	Apr	May	Jun
818,832	832,708	841,708	848,768	855,137	860,041	866,542	866,993	872,924	876,613	886,197	894,554
898,825	908,470	907,170	912,759	917,359	916,944	918,712	914,716	915,353	909,217	910,627	910,442
901,963	892,156	872,518	874,110	828,293	822,027	794,600	778,913	792,133	804,798		

Medicaid Cases

Def: Includes cases active at the end of the month.



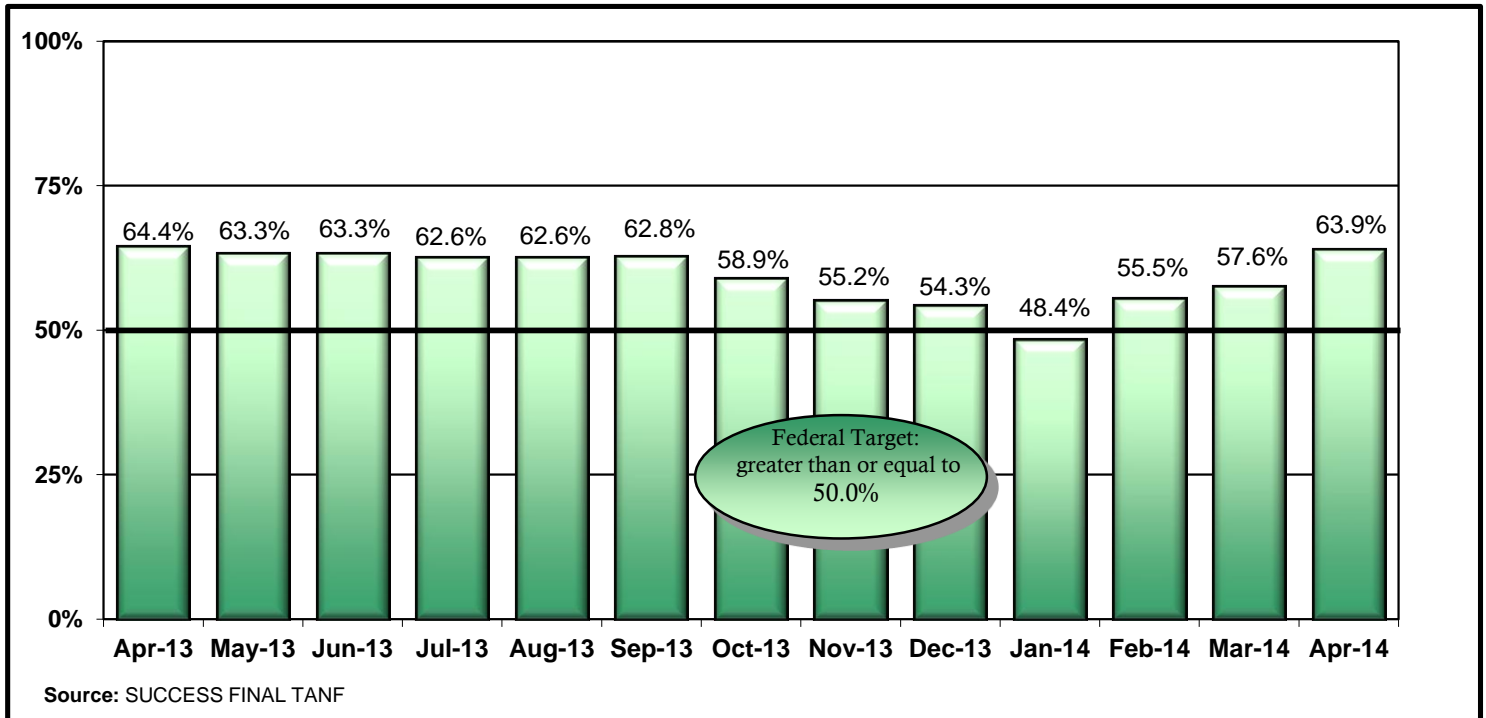
Source: SUCCESS DMF8031I

▲ SFY 2012
 ● SFY 2013
 ◆ SFY 2014

Jul	Aug	Sep	Oct	Nov	Dec	Jan	Feb	Mar	Apr	May	Jun
728,818	730,411	732,108	730,300	726,821	723,826	728,842	728,379	733,291	737,826	742,618	746,335
747,084	748,088	747,833	752,253	753,613	750,240	751,630	751,236	747,918	748,048	749,745	748,509
741,543	738,468	737,583	723,489	740,106	731,209	745,040	760,199	790,866	816,889		

TANF Work Participation Rate

Def: Of all the families with a TANF work requirement, the percentage of families that met the work requirement.

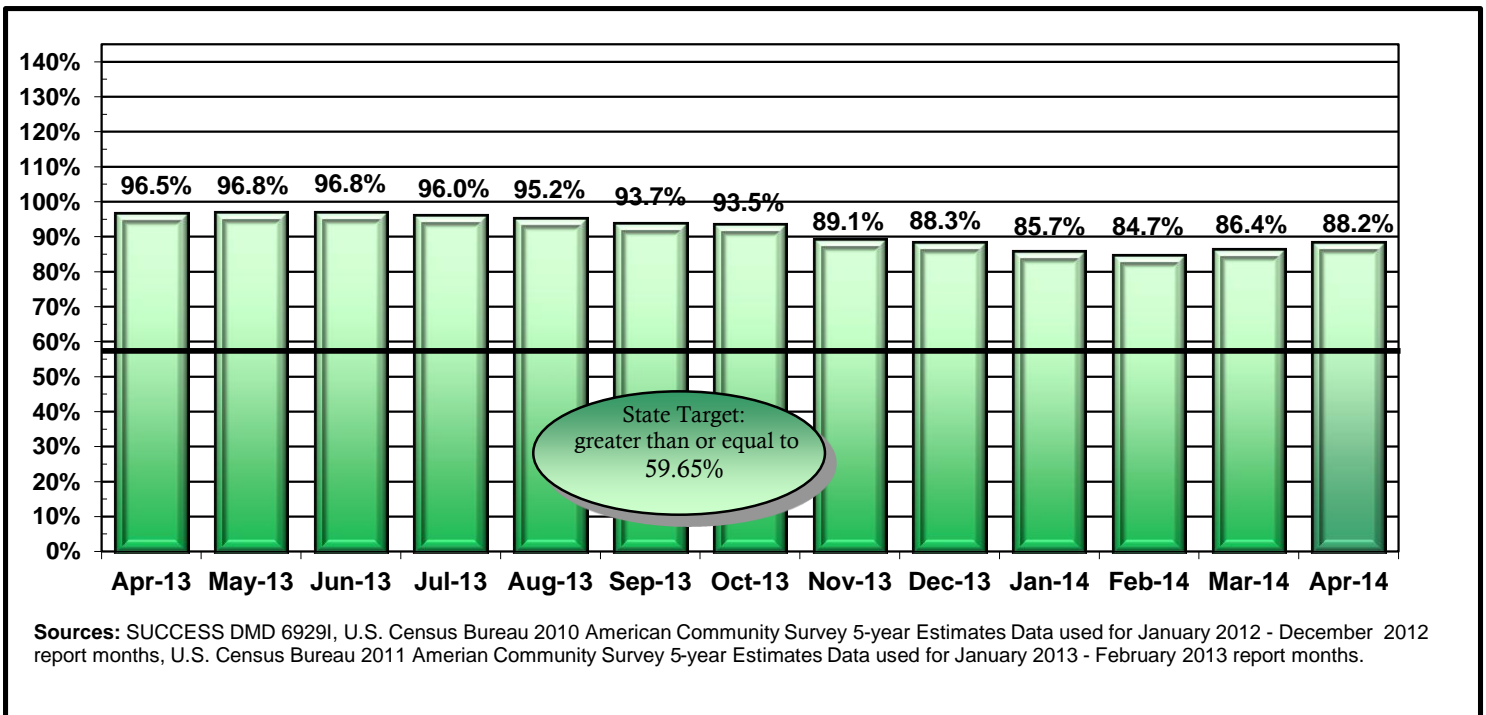


Apr-13	May-13	Jun-13	Jul-13	Aug-13	Sep-13	Oct-13	Nov-13	Dec-13	Jan-14	Feb-14	Mar-14	Apr-14
64.4%	63.3%	63.3%	62.6%	62.6%	62.8%	58.9%	55.2%	54.3%	48.4%	55.5%	57.6%	63.9%

Note: State Target is greater than or equal to 70%.

Food Stamp Participation Rate

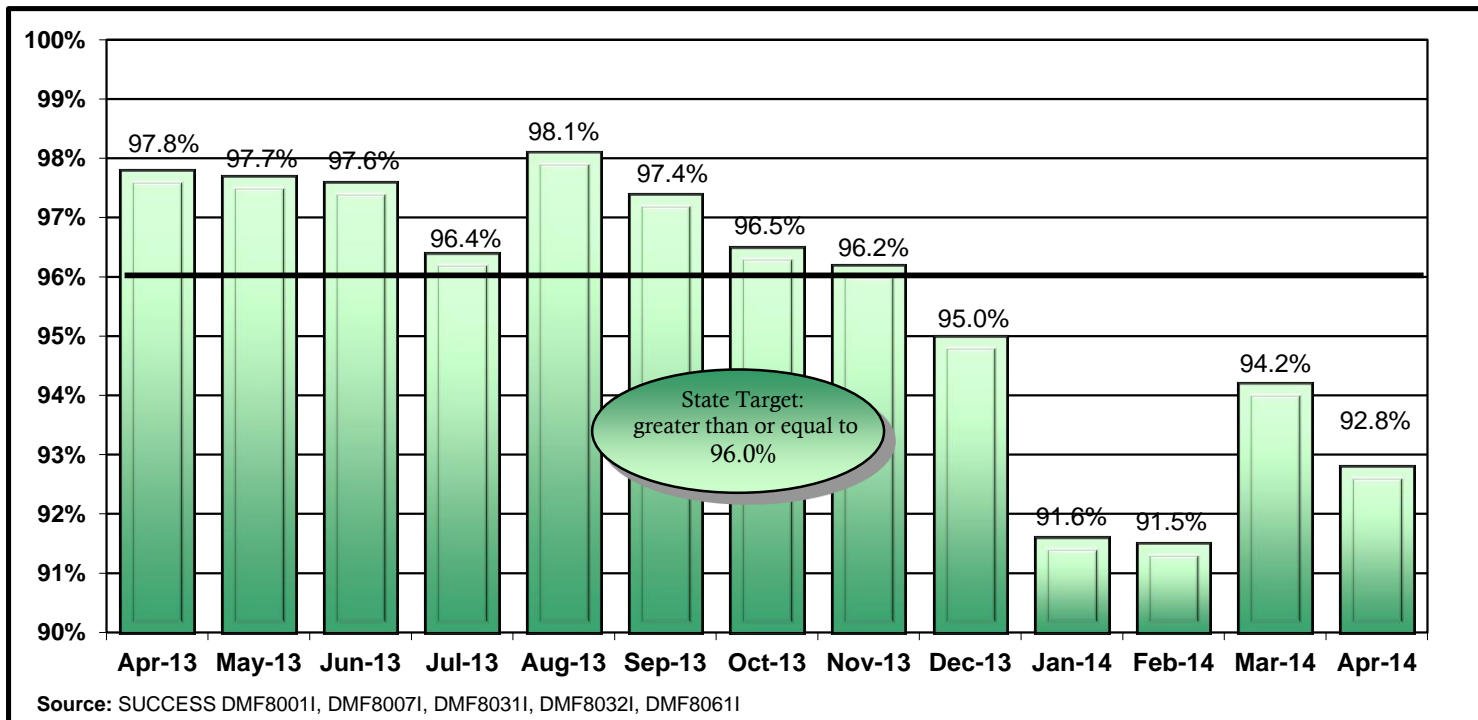
Def: The ratio of number of food stamp persons over the estimated persons at or below 125% of the Poverty level.



Apr-13	May-13	Jun-13	Jul-13	Aug-13	Sep-13	Oct-13	Nov-13	Dec-13	Jan-14	Feb-14	Mar-14	Apr-14
96.5%	96.8%	96.8%	96.0%	95.2%	93.7%	93.5%	89.1%	88.3%	85.7%	84.7%	86.4%	88.2%

Medicaid (ABD) SOP

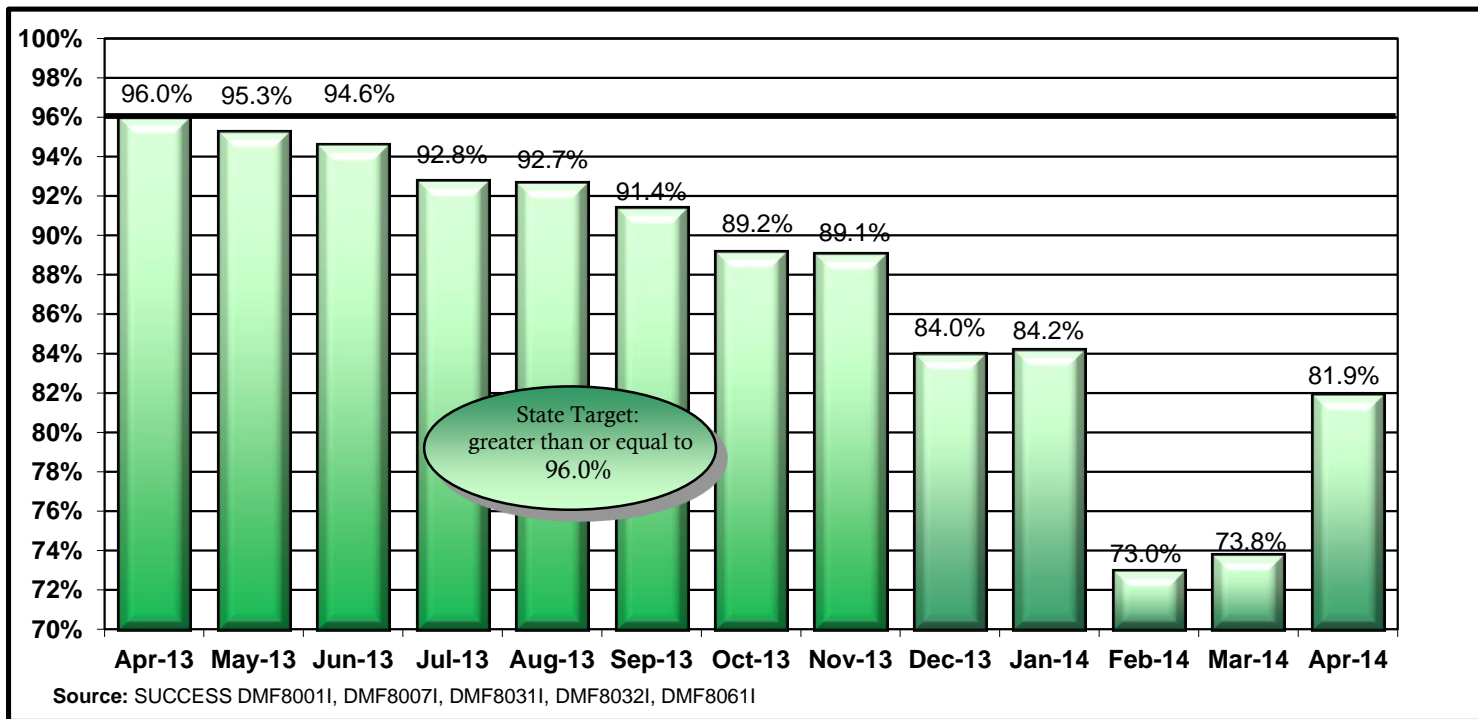
Def: Of all the Aged, Blind, Disabled Medicaid applications for benefits, the percentage that was completed within the mandated Standard of Promptness (SOP).



Apr-13	May-13	Jun-13	Jul-13	Aug-13	Sep-13	Oct-13	Nov-13	Dec-13	Jan-14	Feb-14	Mar-14	Apr-14
97.8%	97.7%	97.6%	96.4%	98.1%	97.4%	96.5%	96.2%	95.0%	91.6%	91.5%	94.2%	92.8%

Medicaid (Family) SOP

Def: Of all the Family Medicaid applications for benefits, the percentage that was completed within the mandated Standard of Promptness (SOP).



Apr-13	May-13	Jun-13	Jul-13	Aug-13	Sep-13	Oct-13	Nov-13	Dec-13	Jan-14	Feb-14	Mar-14	Apr-14
96.0%	95.3%	94.6%	92.8%	92.7%	91.4%	89.2%	89.1%	84.0%	84.2%	73.0%	73.8%	81.9%