

Division of Family and Children Services
Georgia Department of Human Resources

Outcome Measures and RESULTS

FAMILY INDEPENDENCE

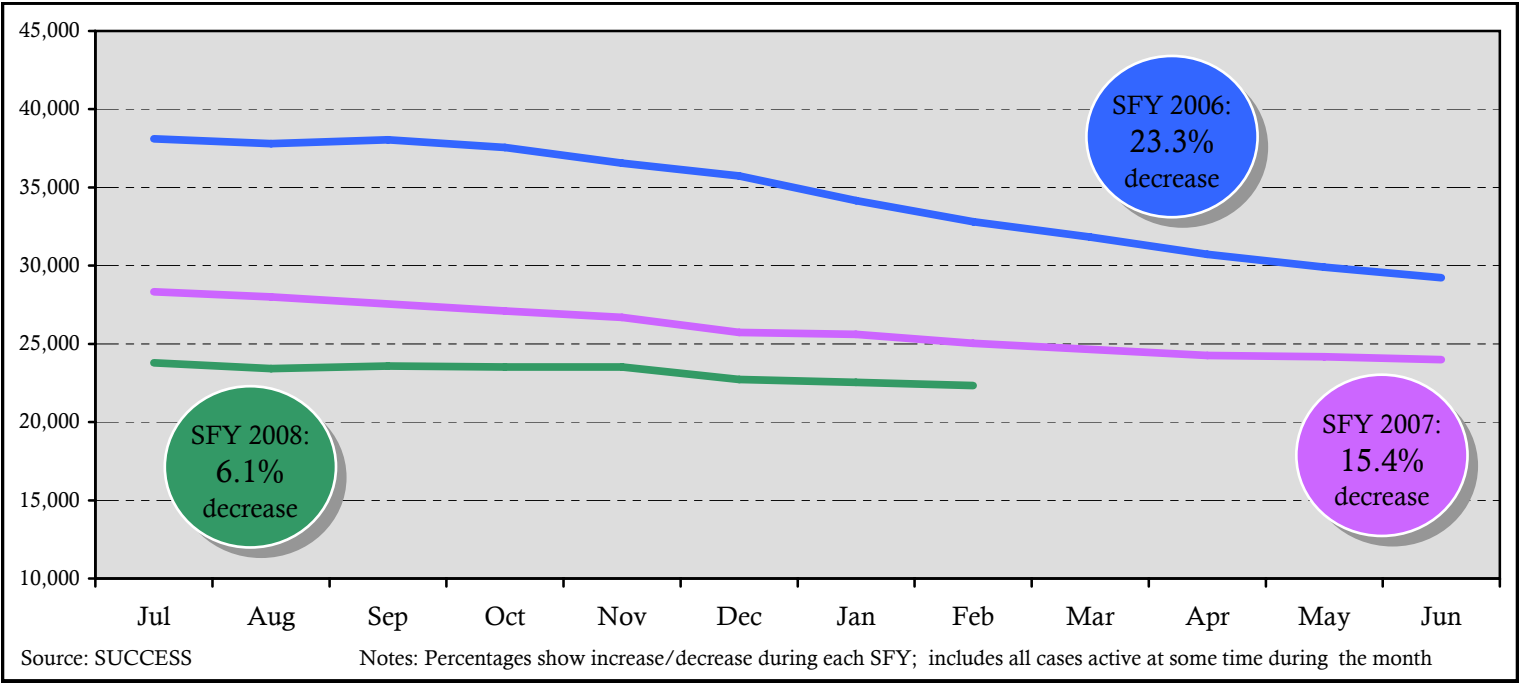
February 2008



Definitions and Data Sources

TANF Cases (Total/Adult/Child Only).....	1-2
Includes all cases active at some time during the month	
Source: SUCCESS	
Food Stamp Cases	3
Includes all cases active at some time during the month	
Source: SUCCESS	
Medicaid Cases	3
Includes cases active at the end of the month	
Source: SUCCESS	
TANF Work Participation Rate	4
Of all the families with a Temporary Assistance to Needy Families (TANF) work requirement, the percentage of families that met the work requirement.	
State Target: greater than or equal to 70.0%	Source: SUCCESS
Food Stamp Participation Rate	4
The ratio of number of food stamp persons over the estimated persons at or below 125% of the Poverty level.	
State Target: greater than or equal to 59.65%	Sources: SUCCESS, U.S. Census Bureau
Medicaid (ABD) Standard of Promptness.....	5
Of all the Aged, Blind, Disabled Medicaid applications for benefits, the percentage that was completed within the mandated Standard of Promptness (SOP).	
State Target: greater than or equal to 96.0%	Source: SUCCESS
Medicaid (Family) Standard of Promptness.....	5
Of all the Family Medicaid applications for benefits, the percentage that was completed within the mandated Standard of Promptness (SOP).	
State Target: greater than or equal to 96.0%	Source: SUCCESS
Family Independence Casemanager Separations.....	6
The number of Family Independence casemanagers who left their positions for any reason, including transfer to other divisions within DHR, transfer to another state agency/office, resignations, or retirement. It does not include county-to-county transfers.	
Source: PeopleSoft	
Family Independence Casemanager Vacancies	6
The number of Family Independence casemanager positions that are not filled.	
Source: PeopleSoft	

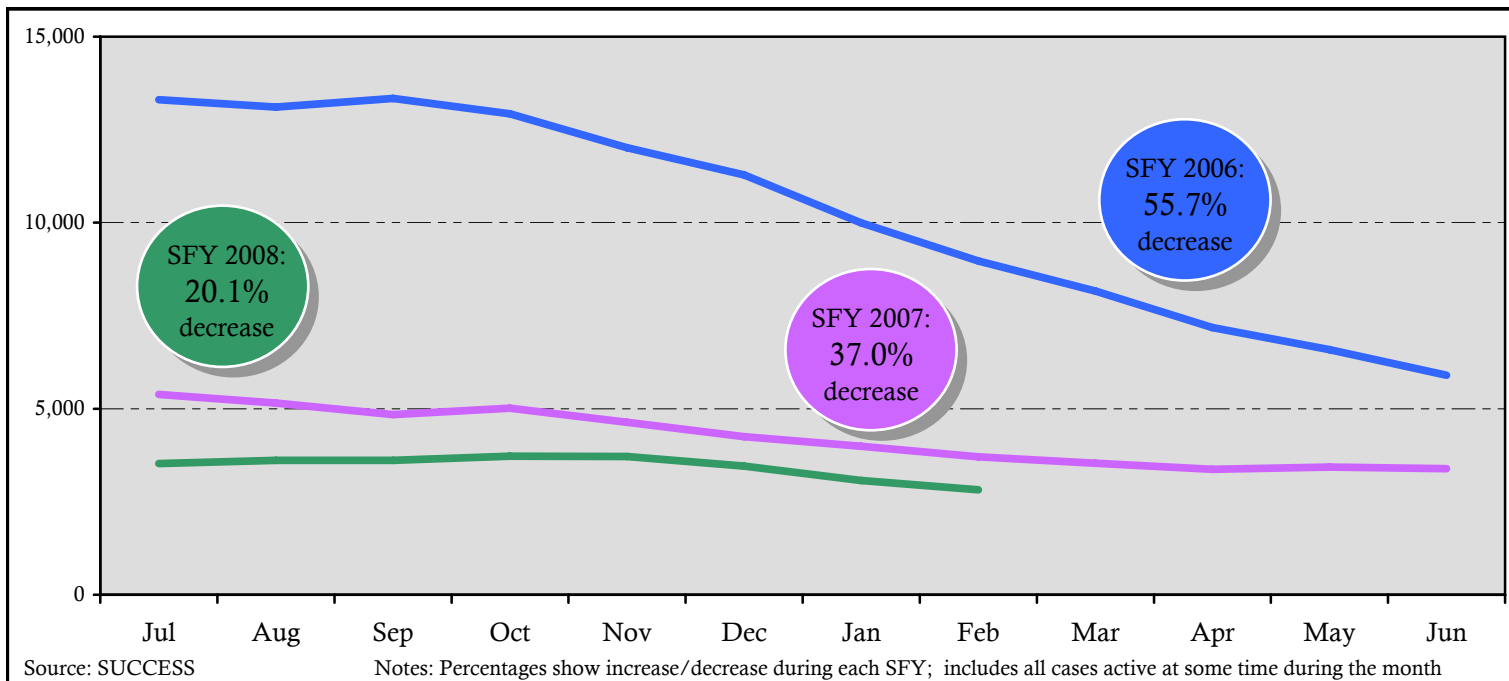
TANF Cases



Jul	Aug	Sep	Oct	Nov	Dec	Jan	Feb	Mar	Apr	May	Jun
23,778	23,410	23,574	23,521	23,525	22,719	22,538	22,336				
28,335	28,003	27,553	27,097	26,702	25,739	25,599	25,031	24,649	24,252	24,175	23,983
38,104	37,808	38,053	37,560	36,560	35,734	34,156	32,804	31,834	30,716	29,910	29,237

Note: Due to the Deficit Reduction Act (DRA) that reauthorized TANF, the caseload and work participation rates have been revised. These changes impact the way in which adults are selected and the calculation of hours in some of the work activities.

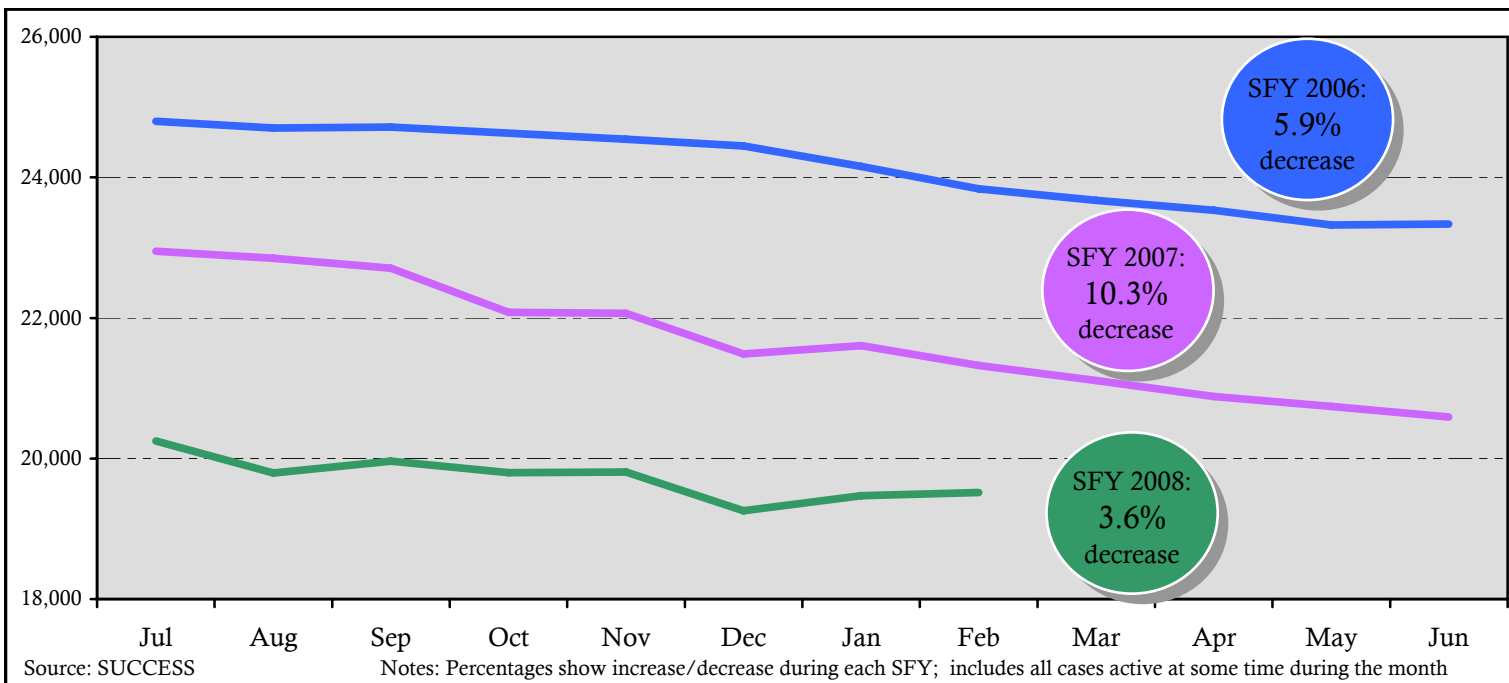
TANF Cases - Adult



Jul	Aug	Sep	Oct	Nov	Dec	Jan	Feb	Mar	Apr	May	Jun
3,530	3,616	3,611	3,722	3,718	3,461	3,069	2,819				
5,386	5,152	4,844	5,018	4,635	4,250	3,994	3,707	3,539	3,372	3,434	3,392
13,308	13,105	13,338	12,931	12,017	11,285	9,998	8,969	8,161	7,184	6,587	5,901

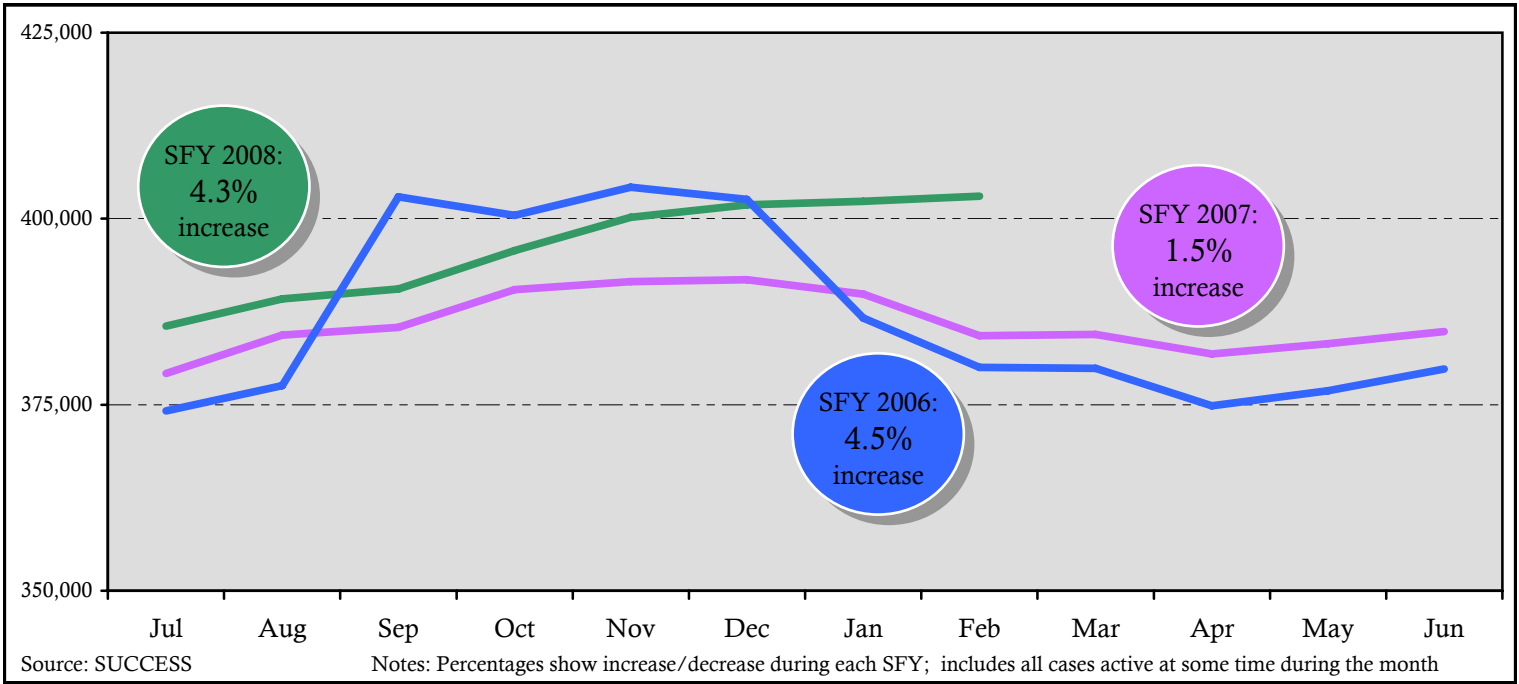
Note: Due to the Deficit Reduction Act (DRA) that reauthorized TANF, the caseload and work participation rates have been revised. These changes impact the way in which adults are selected and the calculation of hours in some of the work activities.

TANF Cases - Child Only



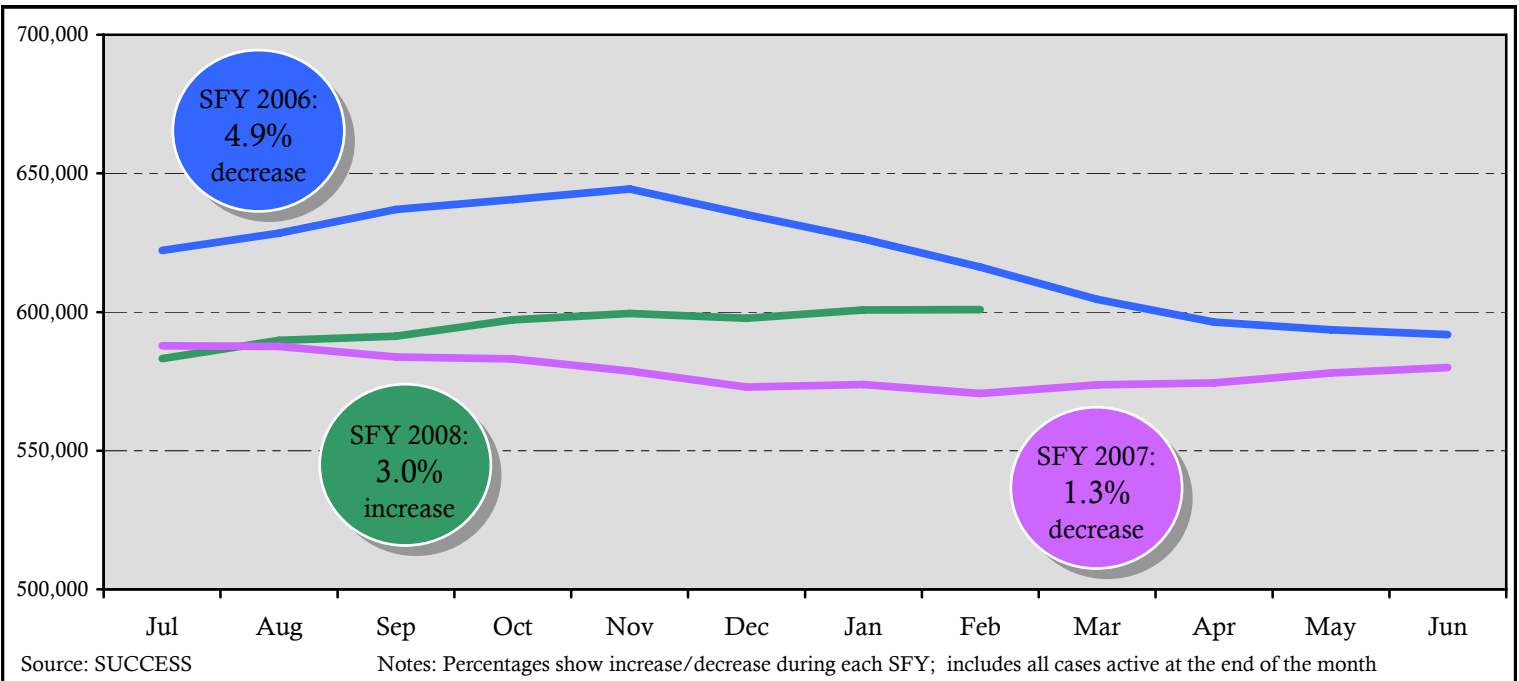
Jul	Aug	Sep	Oct	Nov	Dec	Jan	Feb	Mar	Apr	May	Jun
20,248	19,794	19,963	19,799	19,807	19,258	19,469	19,517				
22,949	22,851	22,709	22,079	22,067	21,489	21,605	21,324	21,110	20,880	20,741	20,591
24,796	24,703	24,715	24,629	24,543	24,449	24,158	23,835	23,673	23,532	23,323	23,336

Food Stamp Cases



Jul	Aug	Sep	Oct	Nov	Dec	Jan	Feb	Mar	Apr	May	Jun
385,577	389,220	390,538	395,695	400,169	401,851	402,330	403,021				
379,188	384,378	385,390	390,446	391,522	391,785	389,868	384,269	384,458	381,828	383,205	384,841
374,158	377,555	402,921	400,441	404,222	402,613	386,637	379,999	379,899	374,850	376,886	379,799

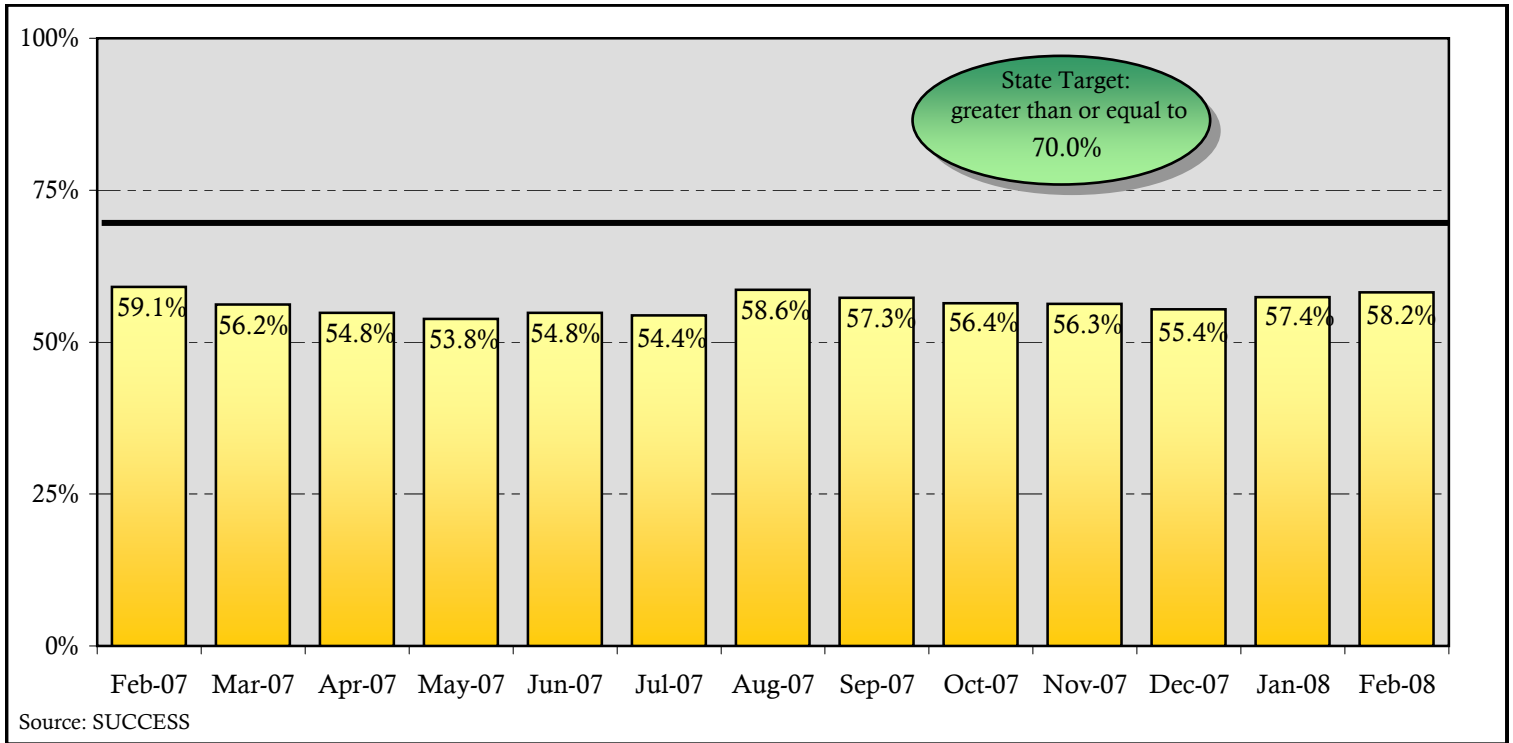
Medicaid Cases



Jul	Aug	Sep	Oct	Nov	Dec	Jan	Feb	Mar	Apr	May	Jun
583,218	589,831	591,259	597,221	599,518	597,777	600,739	600,890				
587,810	587,558	583,754	583,110	578,746	572,899	573,893	570,641	573,712	574,492	577,984	579,952
622,254	628,430	637,012	640,593	644,319	635,136	626,386	616,173	604,547	596,420	593,561	591,870

TANF Work Participation Rate

Def: Of all the families with a TANF work requirement, the percentage of families that met the work requirement.

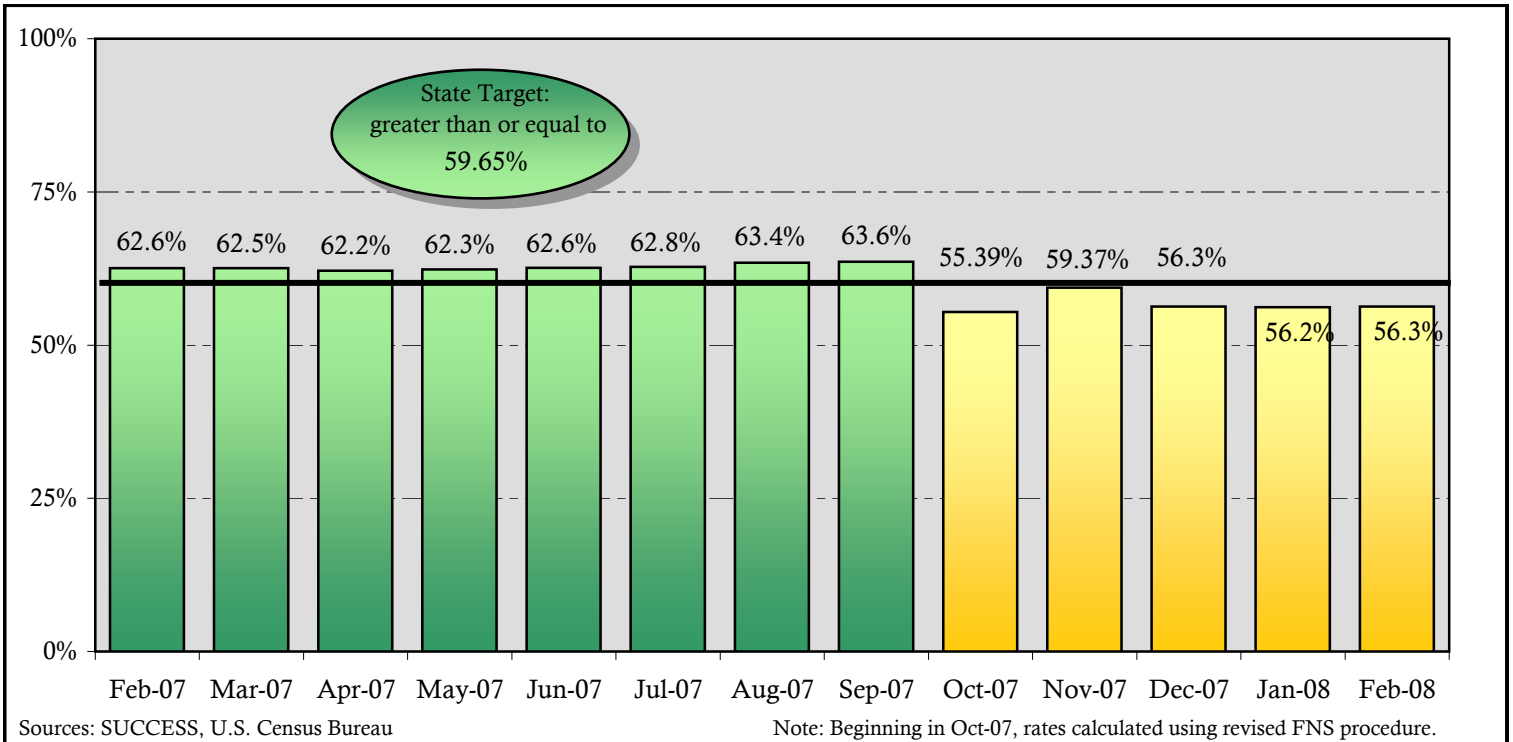


Feb-07	Mar-07	Apr-07	May-07	Jun-07	Jul-07	Aug-07	Sep-07	Oct-07	Nov-07	Dec-07	Jan-08	Feb-08
59.1%	56.2%	54.8%	53.8%	54.8%	54.4%	58.6%	57.3%	56.4%	56.3%	55.4%	57.4%	58.2%

Note: Due to the Deficit Reduction Act (DRA) that reauthorized TANF, the caseload and work participation rates have been revised. These changes impact the way in which adults are selected and the calculation of hours in some of the work activities.

Food Stamp Participation Rate

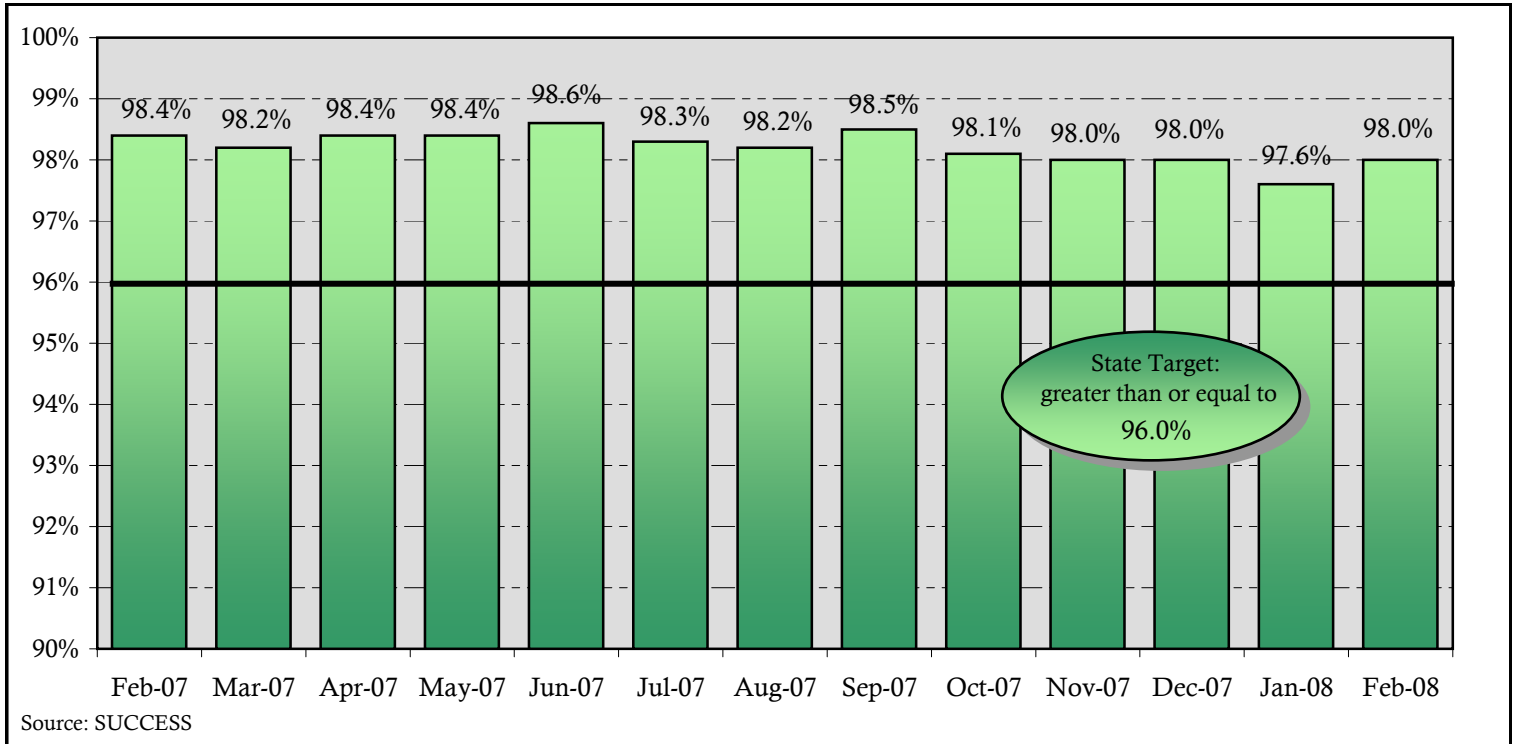
Def: The ratio of number of food stamp persons over the estimated persons at or below 125% of the Poverty level



Feb-07	Mar-07	Apr-07	May-07	Jun-07	Jul-07	Aug-07	Sep-07	Oct-07	Nov-07	Dec-07	Jan-08	Feb-08
62.6%	62.5%	62.2%	62.3%	62.6%	62.8%	63.4%	63.6%	55.39%	59.37%	56.3%	56.2%	56.3%

Medicaid (ABD) SOP

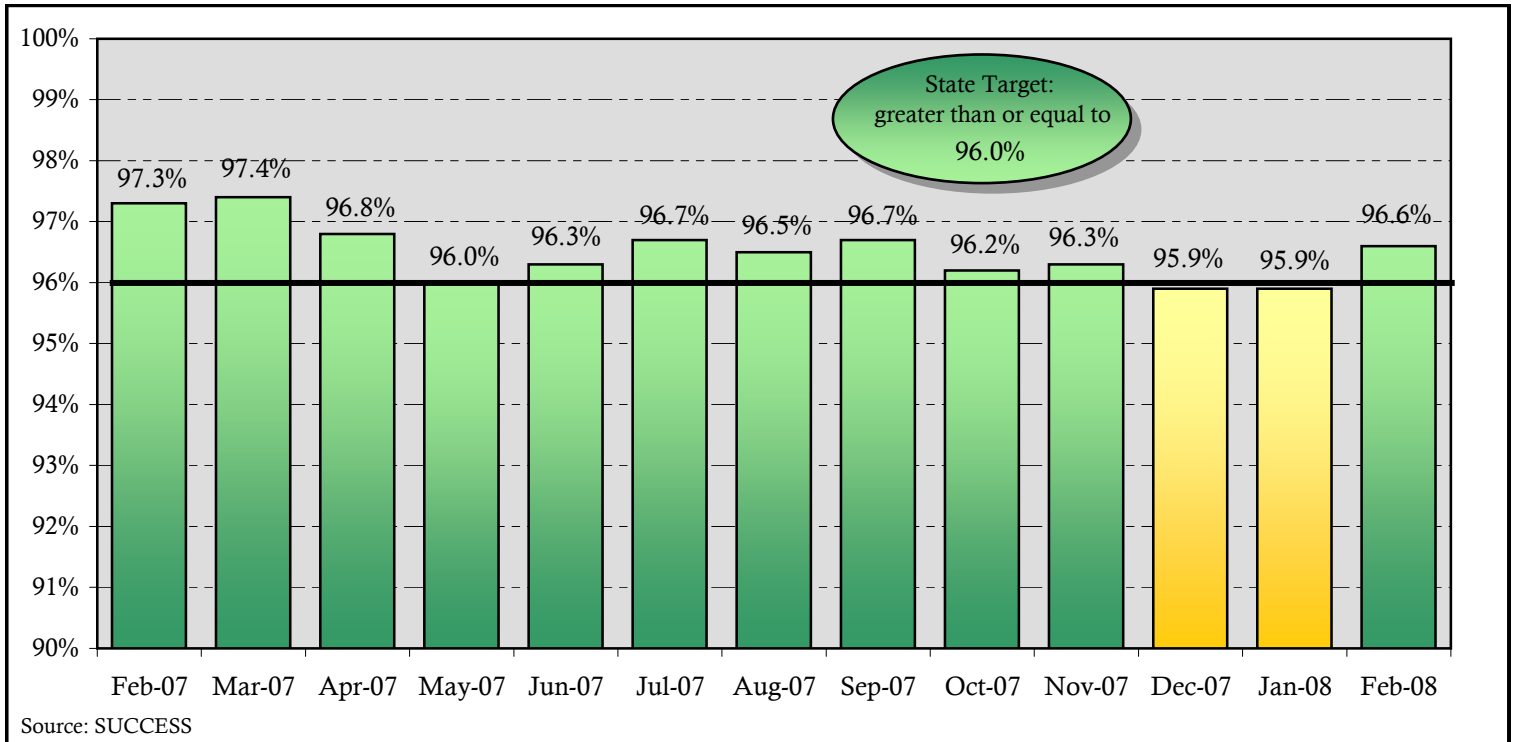
Def: Of all the Aged, Blind, Disabled Medicaid applications for benefits, the percentage that was completed within the mandated Standard of Promptness (SOP).



Feb-07	Mar-07	Apr-07	May-07	Jun-07	Jul-07	Aug-07	Sep-07	Oct-07	Nov-07	Dec-07	Jan-08	Feb-08
98.4%	98.2%	98.4%	98.4%	98.6%	98.3%	98.2%	98.5%	98.1%	98.0%	98.0%	97.6%	98.0%

Medicaid (Family) SOP

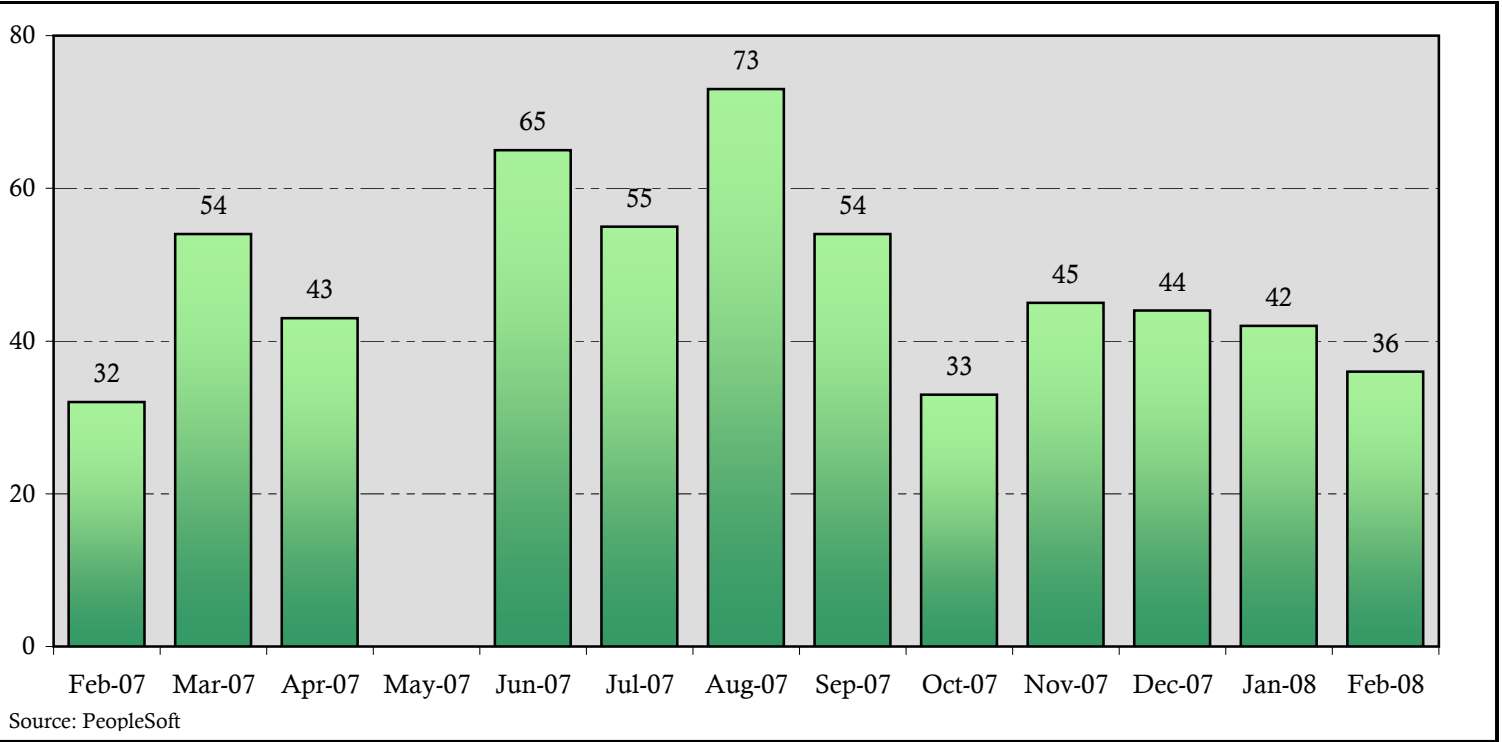
Def: Of all the Family Medicaid applications for benefits, the percentage that was completed within the mandated Standard of Promptness (SOP).



Feb-07	Mar-07	Apr-07	May-07	Jun-07	Jul-07	Aug-07	Sep-07	Oct-07	Nov-07	Dec-07	Jan-08	Feb-08
97.3%	97.4%	96.8%	96.0%	96.3%	96.7%	96.5%	96.7%	96.2%	96.3%	95.9%	95.9%	96.6%

Casemanager Separations

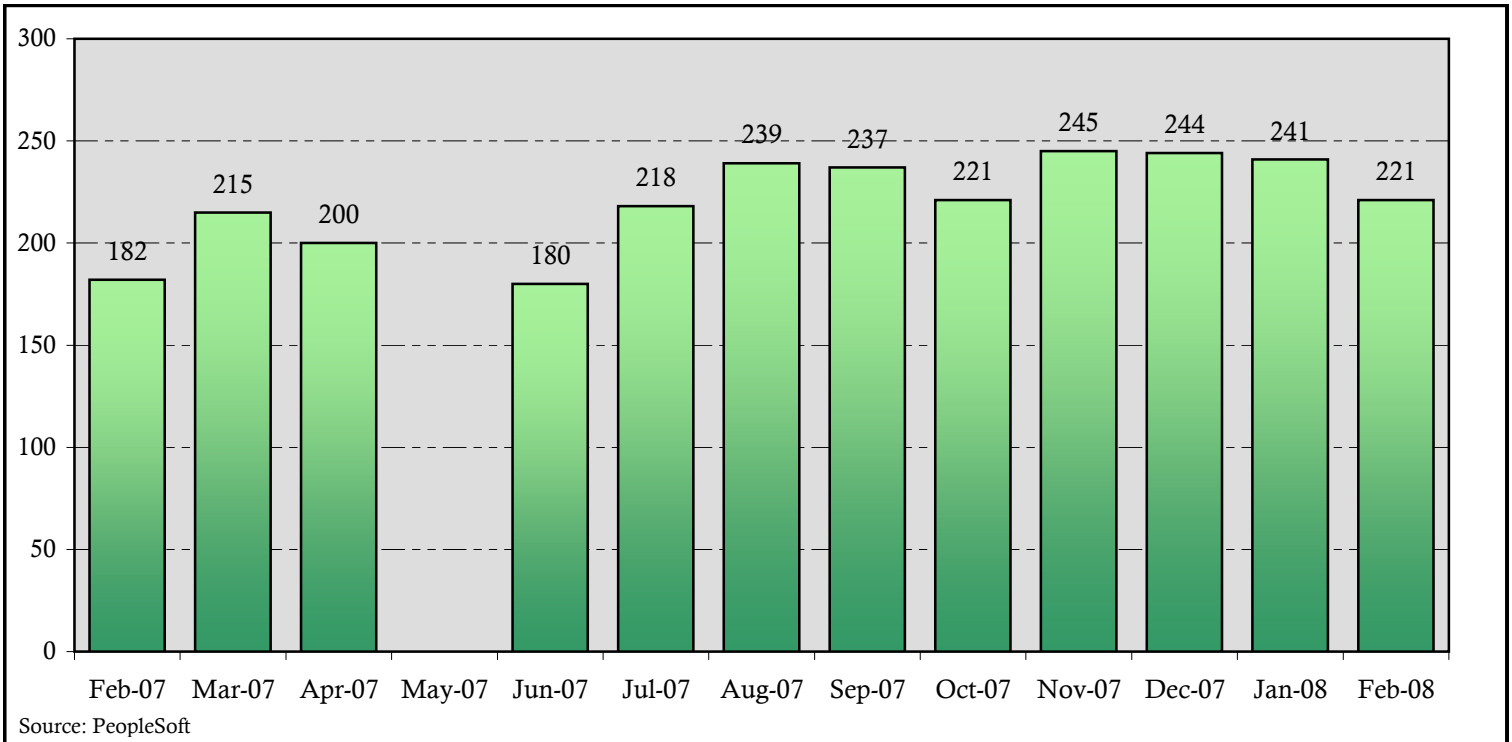
Def: The number of Family Independence casemanagers who left their positions for any reason. It does not include county-to-county transfers.



Feb-07	Mar-07	Apr-07	May-07	Jun-07	Jul-07	Aug-07	Sep-07	Oct-07	Nov-07	Dec-07	Jan-08	Feb-08
32	54	43	*	65	55	73	54	33	45	44	42	36

Casemanager Vacancies

Def: The number of Family Independence casemanager positions that are not filled.



Feb-07	Mar-07	Apr-07	May-07	Jun-07	Jul-07	Aug-07	Sep-07	Oct-07	Nov-07	Dec-07	Jan-08	Feb-08
182	215	200	*	180	218	239	237	221	245	244	241	221