

Family Independence



Outcome Measures and Results *February 2010*

Definitions and Data Sources

Pages

TANF Cases (Total/Adult/Child Only)

1 - 2

Includes all cases active at some time during the month

Source: Success

Food Stamp Cases

3

Includes all cases active at some time during the month

Source: SUCCESS DMD6929I

Medicaid Cases

3

Includes case active at the end of the month

Source: SUCCESS DMF8031I

TANF Work Participation Rate

4

Of all the families with a Temporary Assistance to Needy Families (TANF) work requirement, the percentage of families that met the work requirement. **State Target: greater than or equal to 70%**

Food Stamp Participation Rate

4

The ratio of number of food stamp persons over the estimated persons at or below 125% of the poverty level. **State Target: greater than or equal to 59.65%**

Source: SUCCESS DMD6929I, US Census Bureau

Medicaid (ABD) Standard of Promptness

5

Of all the Aged, Blind, Disabled Medicaid applications for benefits, the percentage that was completed within the mandated Standard of Promptness (SOP). **State Target: greater than or equal to 96.0%**

Source: SUCCESS DMF8001I, DMF8007I, DMF8031I, DMF8032I, DMF8061I

Medicaid (Family) Standard of Promptness

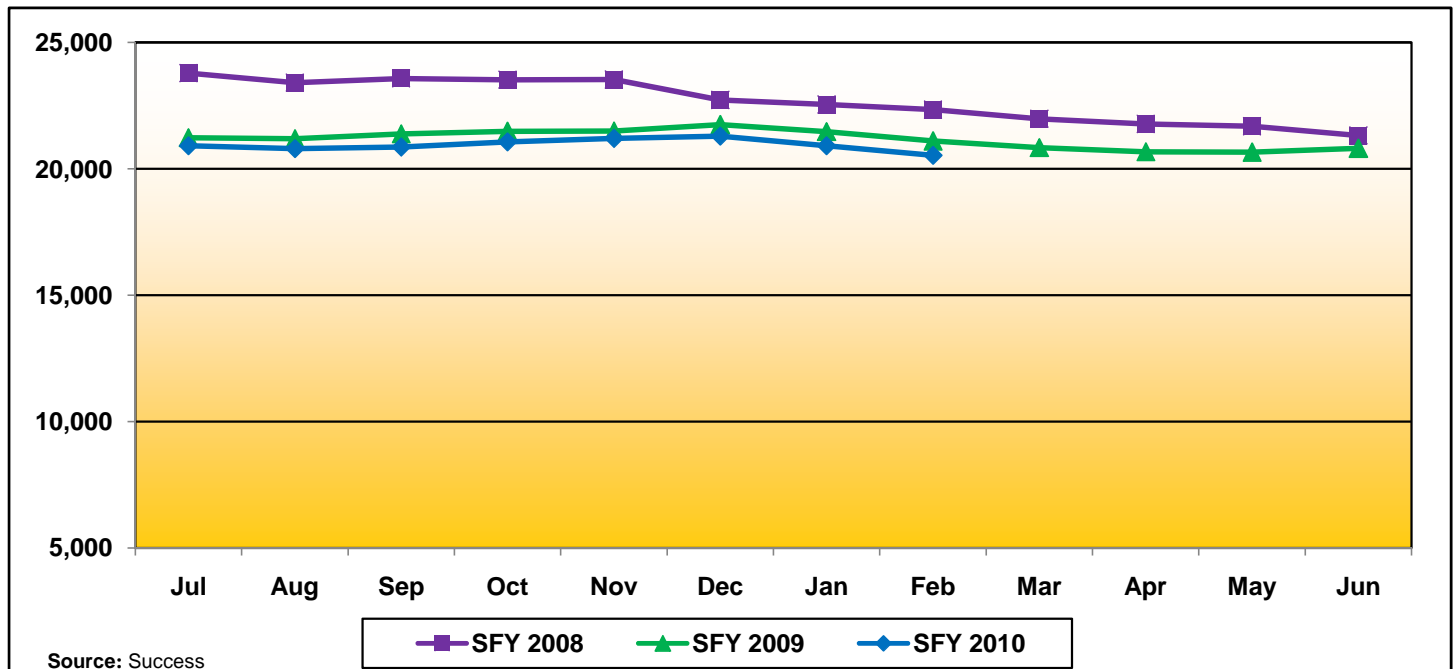
5

Of all the Family Medicaid applications for benefits, the percentage that was completed within the mandated Standard of Promptness (SOP). **State Target: greater than or equal to 96.0%**

Source: SUCCESS DMF8001I, DMF8007I, DMF8031I, DMF8032I, DMF8061I

TANF Cases

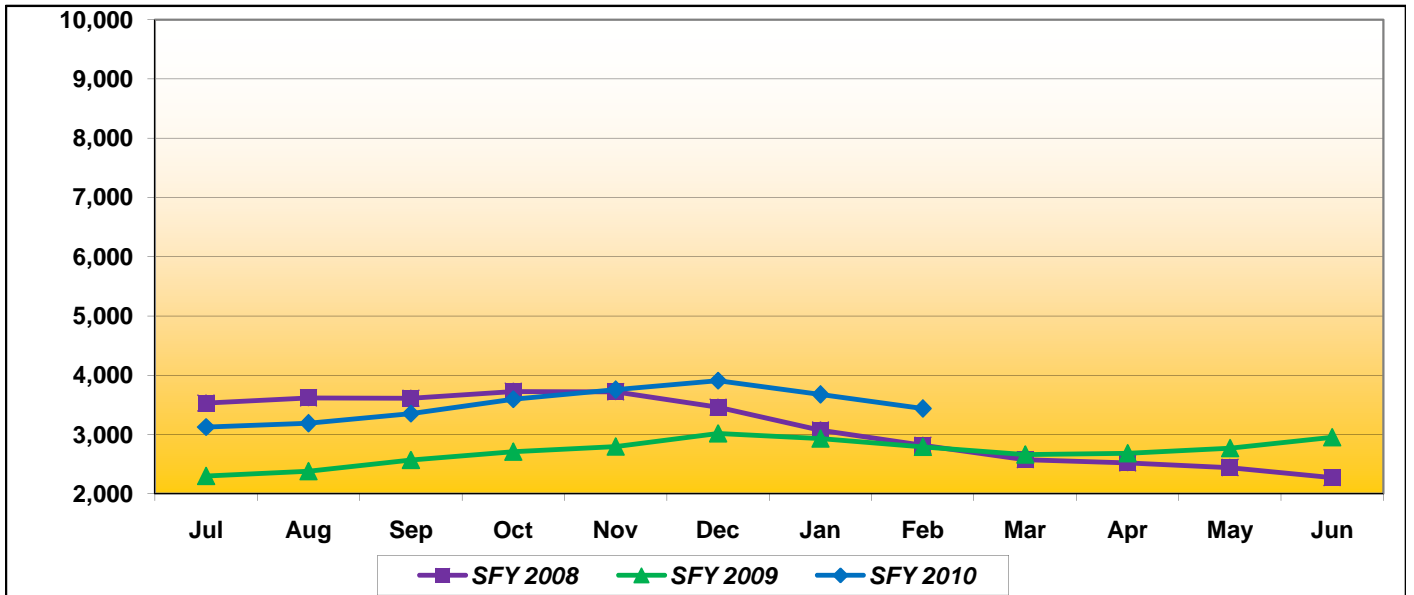
Def: Includes all cases active at some time during the month



Jul	Aug	Sep	Oct	Nov	Dec	Jan	Feb	Mar	Apr	May	Jun
23,778	23,410	23,574	23,521	23,525	22,719	22,538	22,336	21,977	21,768	21,678	21,318
21,231	21,189	21,378	21,478	21,494	21,743	21,467	21,098	20,837	20,671	20,656	20,803
20,911	20,798	20,857	21,057	21,198	21,289	20,905	20,536				

TANF Cases - Adult

Def: Adult is defined as a work eligible individual. Includes all cases active at some time during the month.

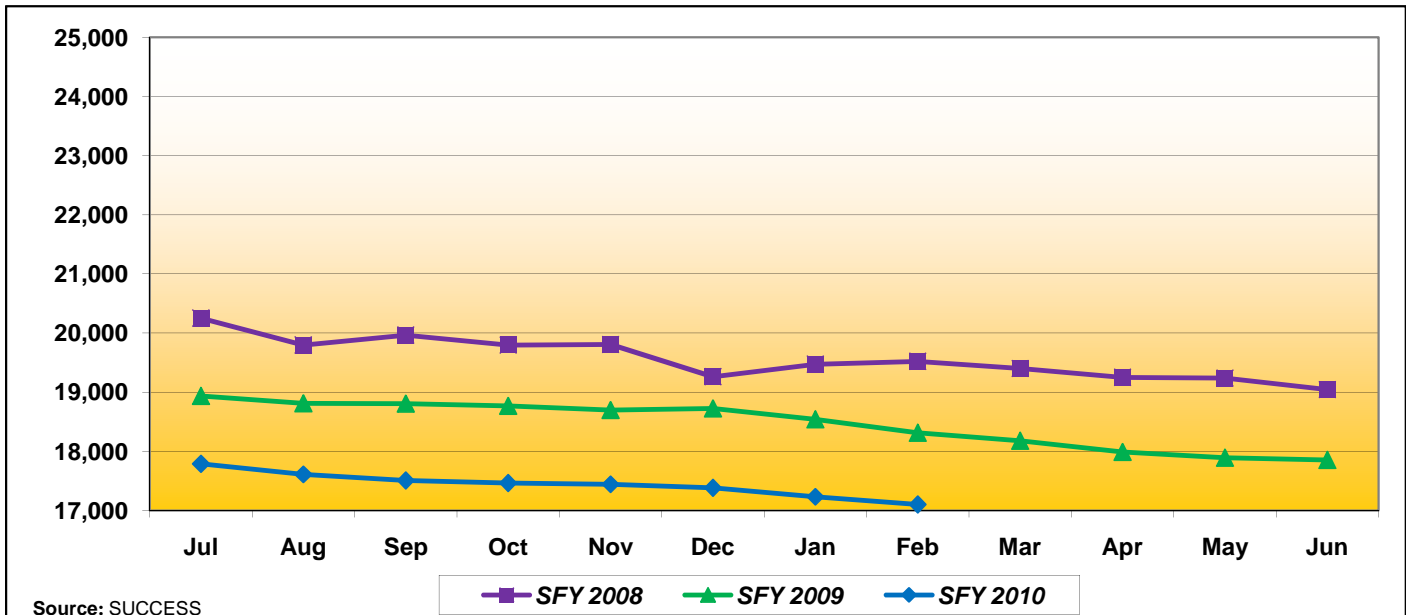


Source: SUCCESS

Jul	Aug	Sep	Oct	Nov	Dec	Jan	Feb	Mar	Apr	May	Jun
3,530	3,615	3,611	3,722	3,718	3,461	3,069	2,819	2,576	2,521	2,439	2,273
2,297	2,378	2,571	2,709	2,795	3,019	2,928	2,788	2,660	2,681	2,766	2,952
3,126	3,188	3,352	3,596	3,755	3,909	3,673	3,437				

TANF Cases - Child Only

Def: There is no work eligible adult in the case. Includes all cases active at some time during the month.

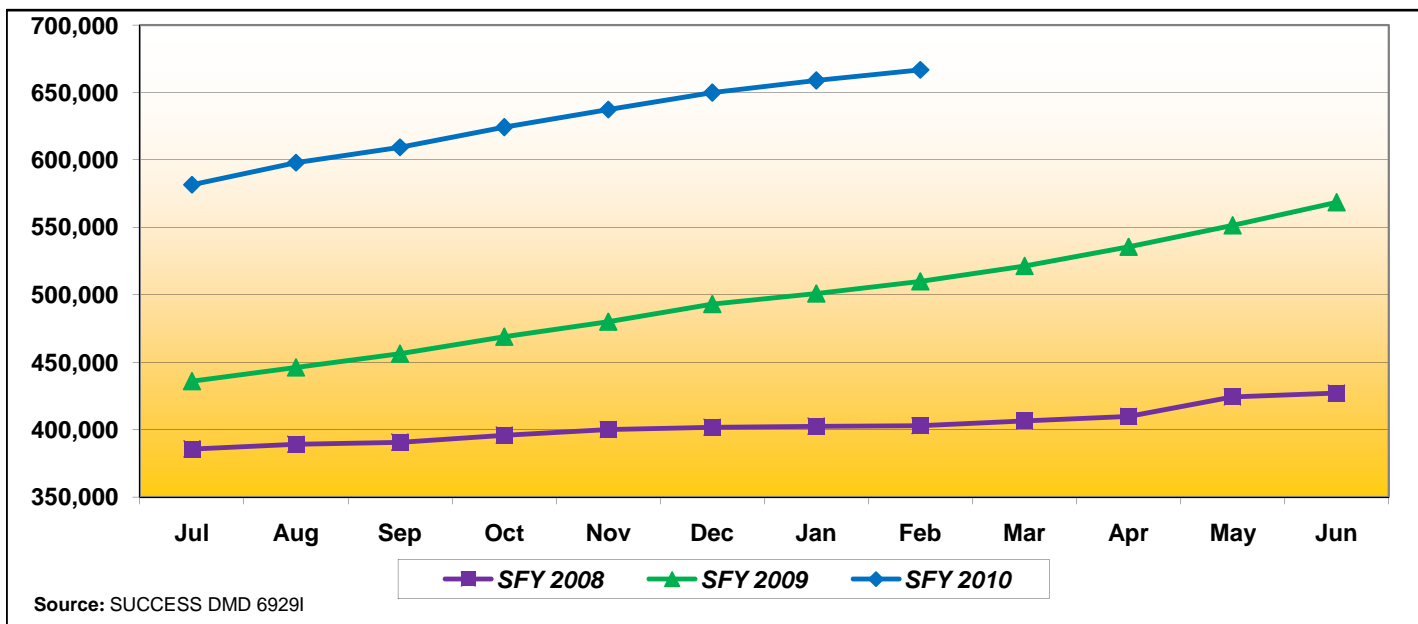


Source: SUCCESS

Jul	Aug	Sep	Oct	Nov	Dec	Jan	Feb	Mar	Apr	May	Jun
20,248	19,794	19,963	19,797	19,807	19,258	19,469	19,517	19,401	19,247	19,239	19,045
18,934	18,811	18,807	18,769	18,699	18,724	18,539	18,310	18,177	17,990	17,890	17,851
17,785	17,610	17,505	17,461	17,443	17,380	17,232	17,099				

Food Stamp Cases

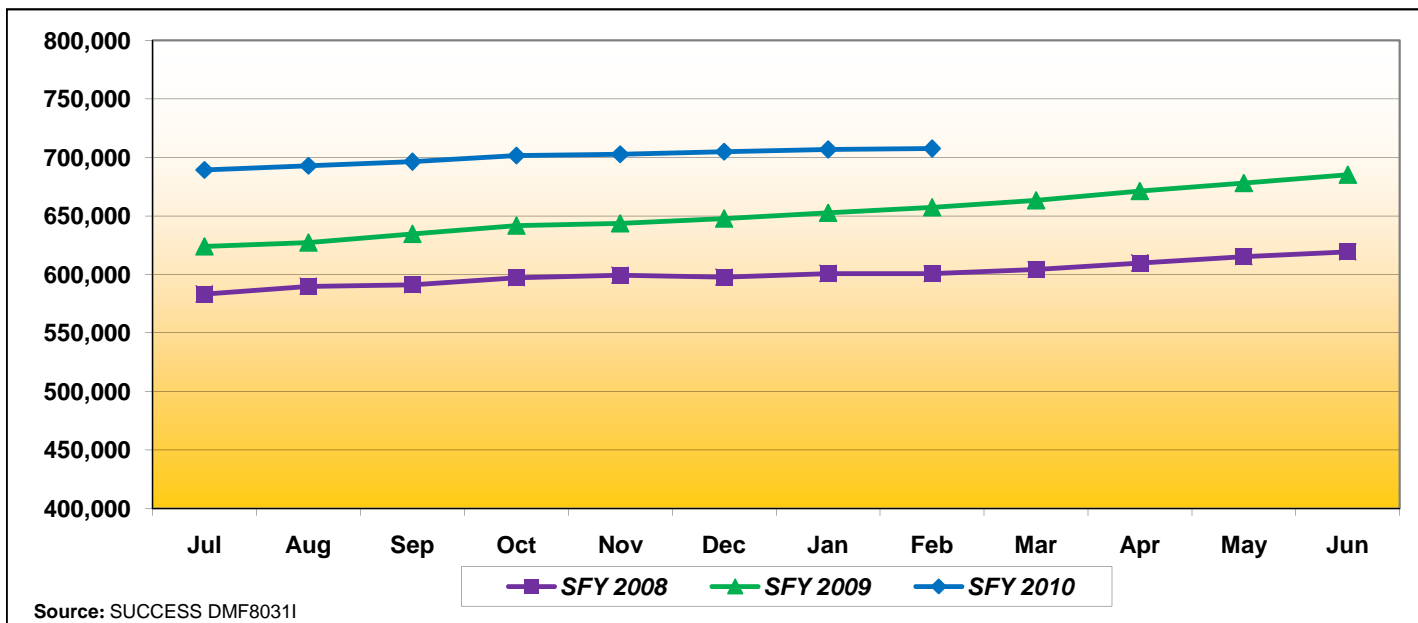
Def: Includes all cases active at some time during the month.



Jul	Aug	Sep	Oct	Nov	Dec	Jan	Feb	Mar	Apr	May	Jun
385,577	389,220	390,538	395,695	400,169	401,851	402,330	403,021	406,577	409,839	424,362	427,150
435,804	446,050	456,274	468,848	480,103	493,228	500,954	509,986	521,253	535,605	551,498	568,542
581,710	598,126	609,475	624,308	637,514	650,005	658,911	666,885				

Medicaid Cases

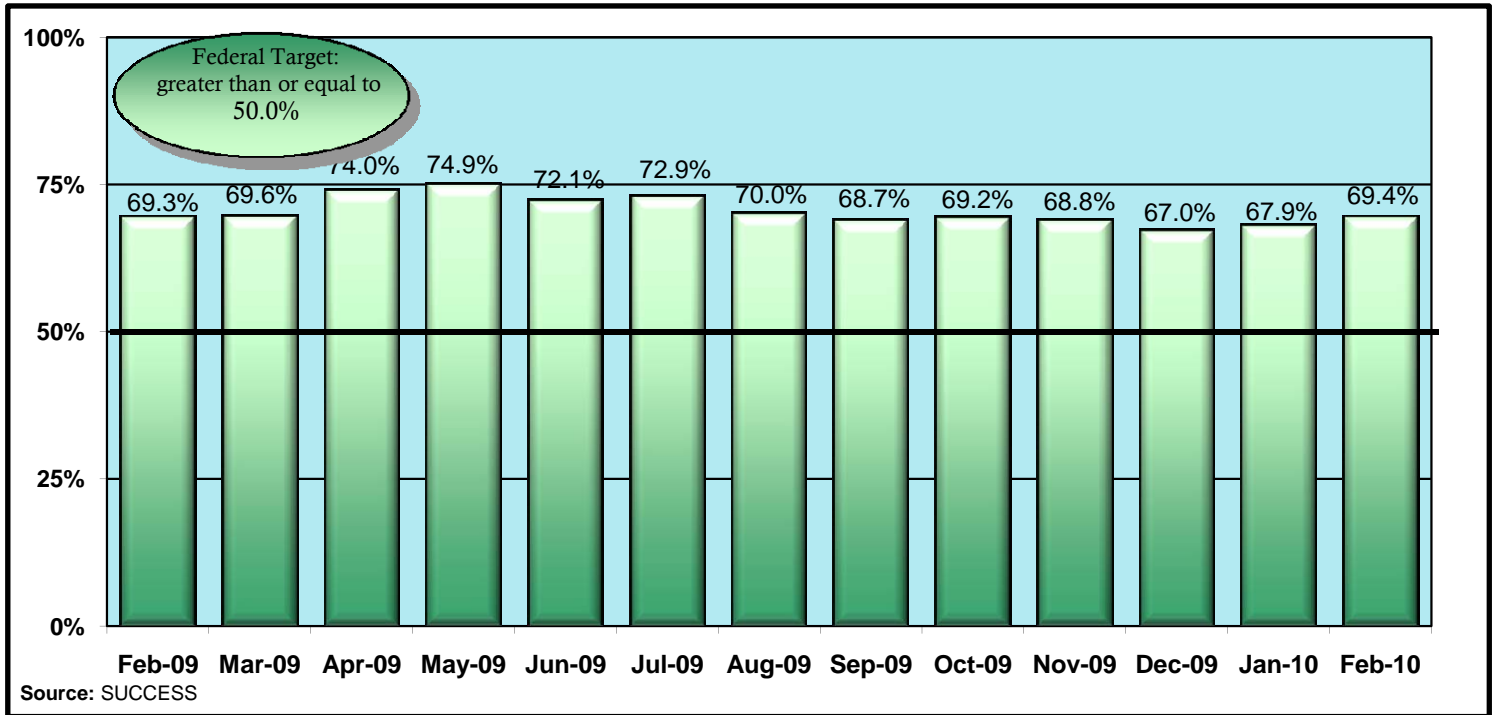
Def: Includes case active at the end of the month.



Jul	Aug	Sep	Oct	Nov	Dec	Jan	Feb	Mar	Apr	May	Jun
583,218	589,831	591,259	597,221	599,518	597,777	600,739	600,890	604,355	609,750	615,327	619,436
624,150	627,369	634,654	641,789	643,827	647,760	652,838	657,302	663,485	671,324	678,214	685,321
689,390	693,057	696,432	701,695	702,853	705,042	706,868	707,691				

TANF Work Participation Rate

Def: Of all the families with a TANF work requirement, the percentage of families that met the work requirement.

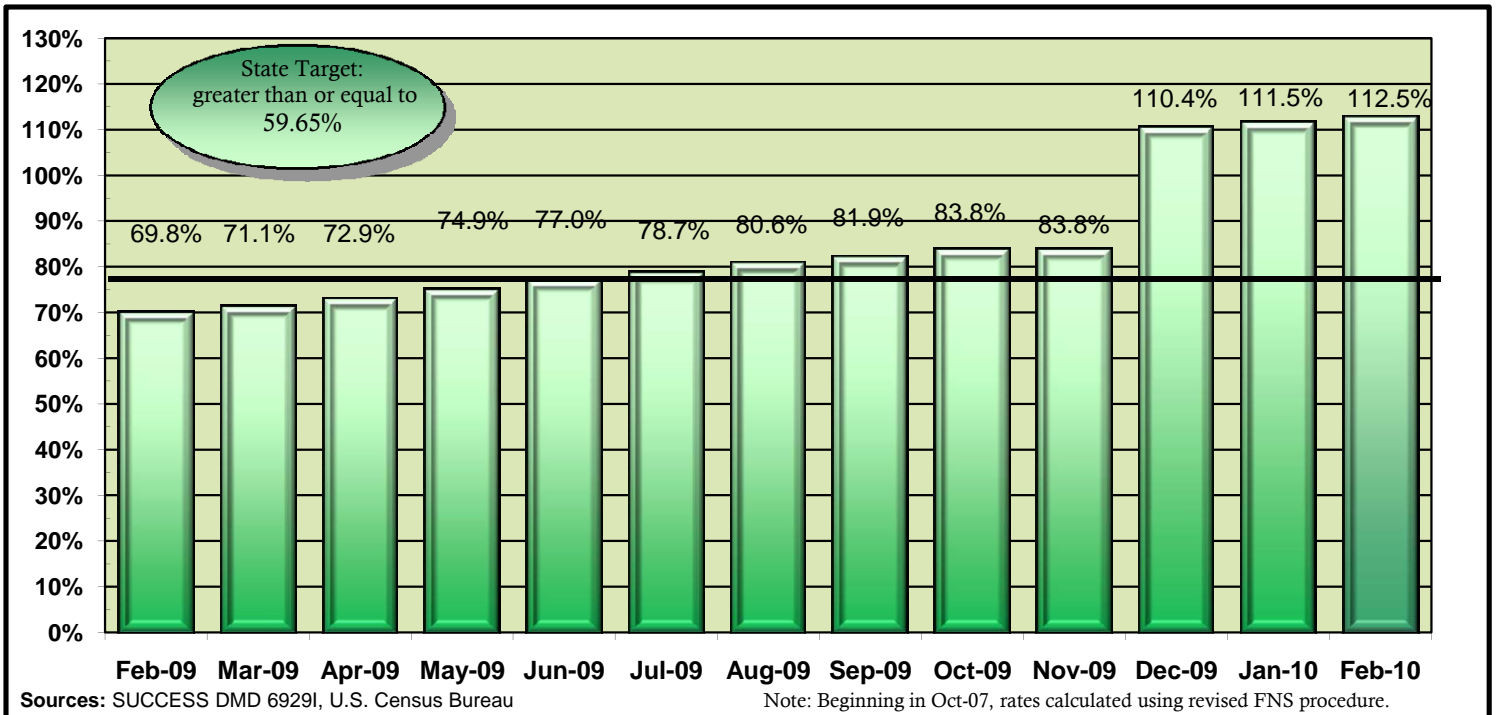


Feb-09	Mar-09	Apr-09	May-09	Jun-09	Jul-09	Aug-09	Sep-09	Oct-09	Nov-09	Dec-09	Jan-10	Feb-10
69.3%	69.6%	74.0%	74.9%	72.1%	72.9%	70.0%	68.7%	69.2%	68.8%	67.0%	67.9%	69.4%

Note: State Target is greater than or equal to 70%.

Food Stamp Participation Rate

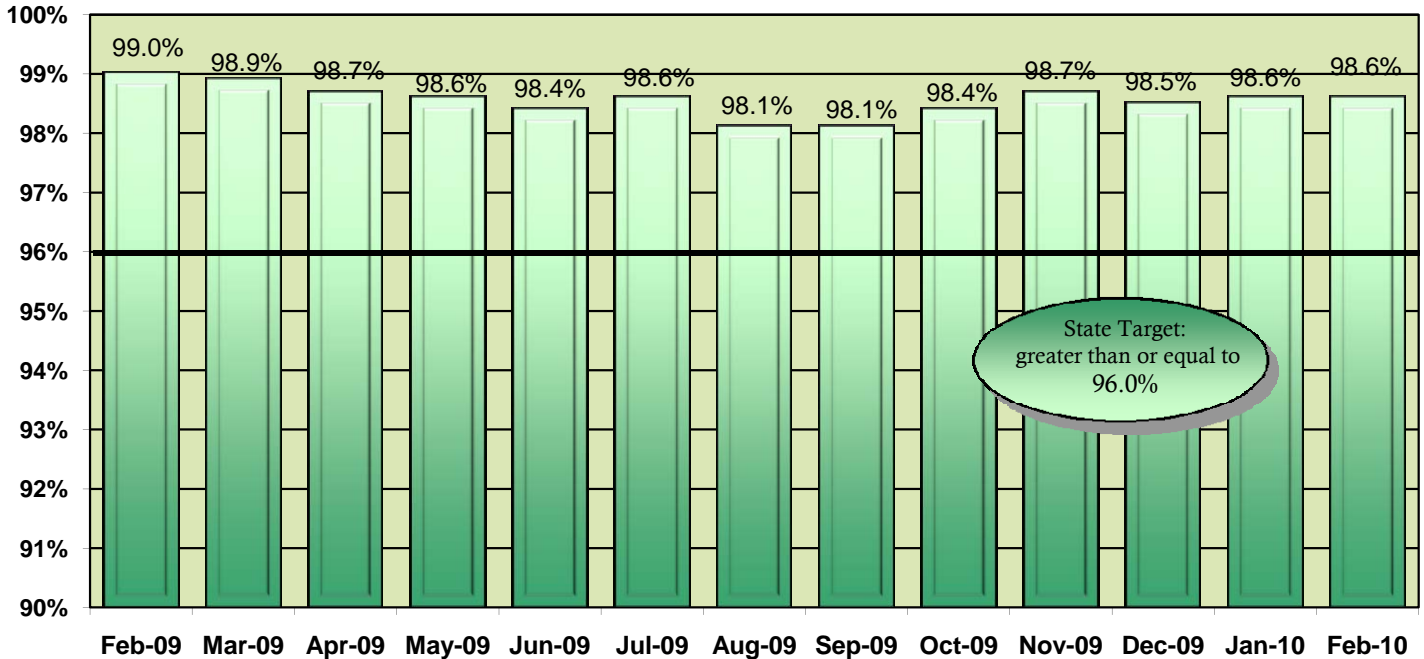
Def: The ratio of number of food stamp persons over the estimated persons at or below 125% of the Poverty level.



Feb-09	Mar-09	Apr-09	May-09	Jun-09	Jul-09	Aug-09	Sep-09	Oct-09	Nov-09	Dec-09	Jan-10	Feb-10
69.8%	71.1%	72.9%	74.9%	77.0%	78.7%	80.6%	81.9%	83.8%	83.8%	110.4%	111.5%	112.5%

Medicaid (ABD) SOP

Def: Of all the Aged, Blind, Disabled Medicaid applications for benefits, the percentage that was completed within the mandated Standard of Promptness (SOP).

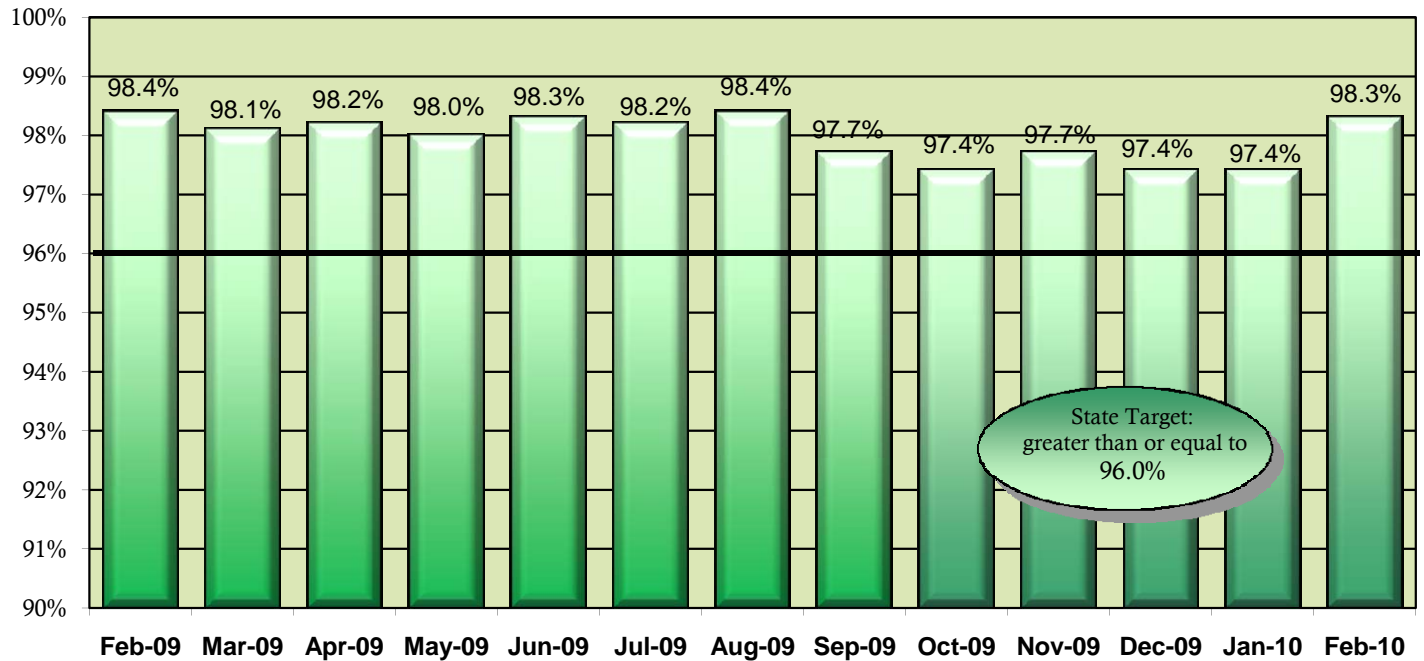


Source: SUCCESS DMF8001I, DMF8007I, DMF8031I, DMF8032I, DMF8061I

Feb-09	Mar-09	Apr-09	May-09	Jun-09	Jul-09	Aug-09	Sep-09	Oct-09	Nov-09	Dec-09	Jan-10	Feb-10
99.0%	98.9%	98.7%	98.6%	98.4%	98.6%	98.1%	98.1%	98.4%	98.7%	98.5%	98.6%	98.6%

Medicaid (Family) SOP

Def: Of all the Family Medicaid applications for benefits, the percentage that was completed within the mandated Standard of Promptness (SOP).



Source: SUCCESS DMF8001I, DMF8007I, DMF8031I, DMF8032I, DMF8061I

Feb-09	Mar-09	Apr-09	May-09	Jun-09	Jul-09	Aug-09	Sep-09	Oct-09	Nov-09	Dec-09	Jan-10	Feb-10
98.4%	98.1%	98.2%	98.0%	98.3%	98.2%	98.4%	97.7%	97.4%	97.7%	97.4%	97.4%	98.3%