



# *Georgia Division of Family & Children Services*

Bobby D. Cagle, Director

# Office of Family Independence Outcome Measures & Results Report July 2016

(Reflects data as of June 30, 2016)



*Division of Family & Children Services*

# Definitions and Data Sources

## **Outcome I: Number of Children Served**

Number of children receiving subsidized childcare in the reporting month.

**Sources:** MAXSTAR – Active Caseload Report I, Federal ACF-801 Data Submission Summary Data Assessment Report

## **Outcome II: Total Number of Childcare Applications Received**

Total number of Compass Referrals and Non-Compass Referrals applications received in the reporting month

**Sources:** MAXSTAR – Active Caseload Report – Compass Referrals, MAXSTAR – Active Caseload Report – Non-Compass Referrals

**Note:** *Common Point of Access to Social Services (COMPASS)* is online application where an individual can apply for public assistance benefits in Georgia. *Non-COMPASS* is an individual can apply for public assistance benefits at a local Georgia Division of Family and Children Services (DFCS) office.

## **Outcome III: Total Number of TANF Recipients**

Total number of adult and child-only cases active at some time during month.

**Source:** SUCCESS FINAL TANF

## **Outcome IV: TANF Cases – Adult**

Adult is defined as a work eligible individual. All cases active at some time during the month.

**Source:** SUCCESS FINAL TANF

## **Outcome V: TANF Cases – Child-Only**

There is no work eligible adult in the case. All cases active at some time during the month.

**Source:** SUCCESS FINAL TANF

## **Outcome VI: Food Stamp Cases**

Number of food stamp cases at or below 125% of poverty level. All cases active at some time during the month.

**Source:** SUCCESS DMD6929I Food Stamp Participation Report



# Definitions and Data Sources

## Outcome VII: Medicaid Cases

Total number of Family Medicaid and Aged Blind Disabled (ABD) Medicaid cases active at the end of the month.

**Source:** SUCCESS DMF8031I AU Load Activity Report

## Outcome VIII: TANF Work Participation Rate

Of all the families with a Temporary Assistance to Needy Families (TANF) work requirement, the percentage of families that met work requirement. **Federal Target: greater than or equal to 50%**

**Source:** SUCCE FINAL TANF

## Outcome IX: Food Stamp Participation Rate

The ratio of food stamp participants over the estimated participants at or below 125% of the poverty level.

**State Target: 59.65%**

**Source:** SUCCESS DMD6929I Food Stamp Participation Report and U.S. Census Bureau 2012 American Community Survey 5-year Estimates Data

## Outcome X: Medicaid (ABD) Standard of Promptness

Of all the Aged, Blind, Disabled Medicaid applications for benefits, the percentage that was completed within the mandated Standard of Promptness (SOP). The percentage is calculated by  $1 - (\text{NETOSOP} / (\text{Total Applications Received} + \text{Pending End of Month}))$  **State Target: greater than or equal to 96.0%**

**Source:** SUCCESS DMF8001I Application Activity Report, DMF8007I Review Activity Report, DMF8031I AU Load Activity Report, DMF8032I Case Maintenance Report, DMF8061I Monthly Application SOP Report

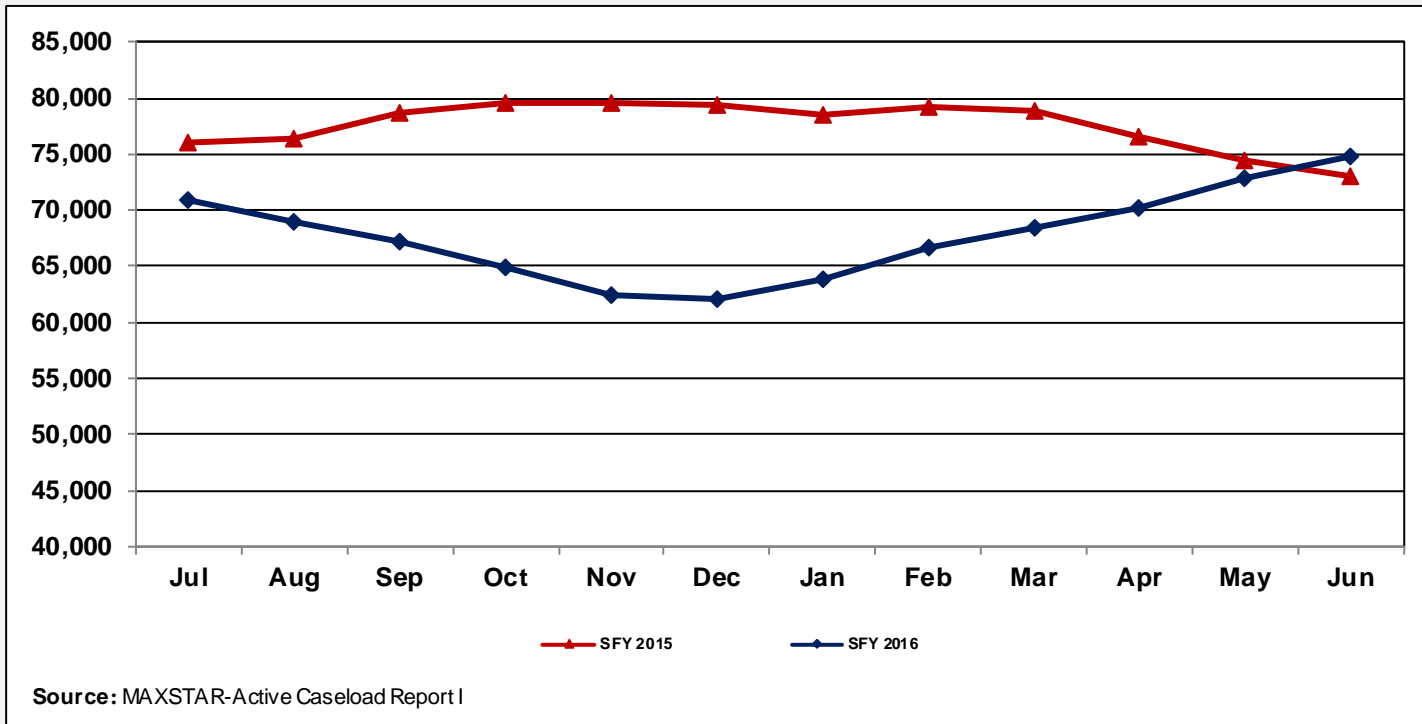
## Outcome XI: Medicaid (Family) Standard of Promptness

Of all the Family Medicaid applications for benefits, the percentage that was completed within the mandated Standard of Promptness (SOP). The percentage is calculated by  $1 - (\text{NETOSOP} / (\text{Total Applications Received} + \text{Pending End of Month}))$  **State Target: greater than or equal to 96.0%**

**Source:** SUCCESS DMF8001I Application Activity Report, DMF8007I Review Activity Report, DMF8031I AU Load Activity Report, DMF8032I Case Maintenance Report, DMF8061I Monthly Application SOP Report



## Outcome I: Number of Children Served

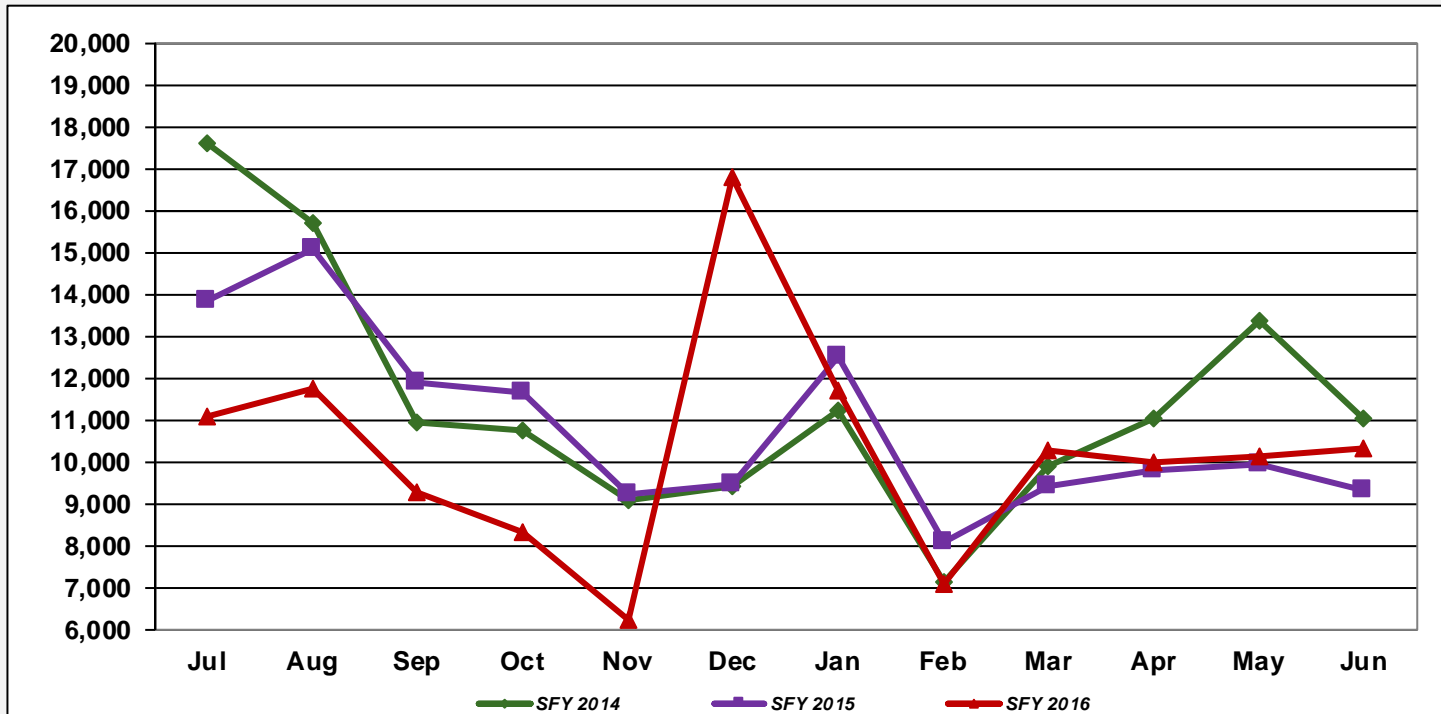


Jul	Aug	Sep	Oct	Nov	Dec	Jan	Feb	Mar	Apr	May	Jun
76,107	76,416	78,729	79,616	79,492	79,434	78,517	79,285	78,935	76,523	74,467	73,014
70,928	68,973	67,270	64,825	62,348	62,103	63,904	66,603	68,395	70,233	72,919	74,833

Note: Active Caseload Report I is the interim number based on children receiving subsidized childcare during the month.



## Outcome II: Total Number of Childcare Applications Received

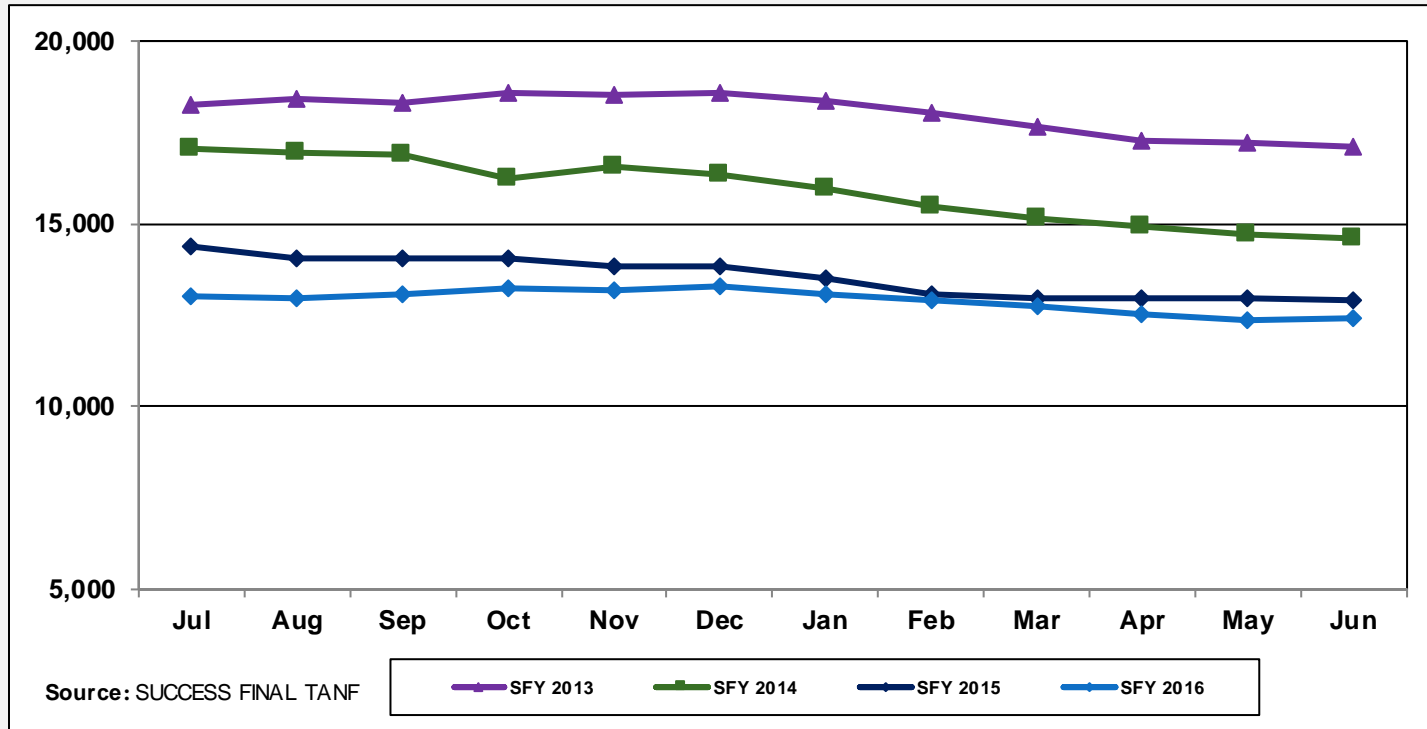


Source: MAXSTAR - Active Caseload Report-Compass Referrals, MAXSTAR-Active Caseload Report - Non-Compass Referrals

Jul	Aug	Sep	Oct	Nov	Dec	Jan	Feb	Mar	Apr	May	Jun
17,606	15,703	10,961	10,750	9,121	9,435	11,259	7,131	9,912	11,048	13,384	11,058
13,858	15,079	11,893	11,687	9,225	9,489	12,547	8,126	9,413	9,800	9,963	9,361
11,077	11,790	9,303	8,336	6,265	16,800	11,699	7,100	10,290	9,993	10,136	10,316



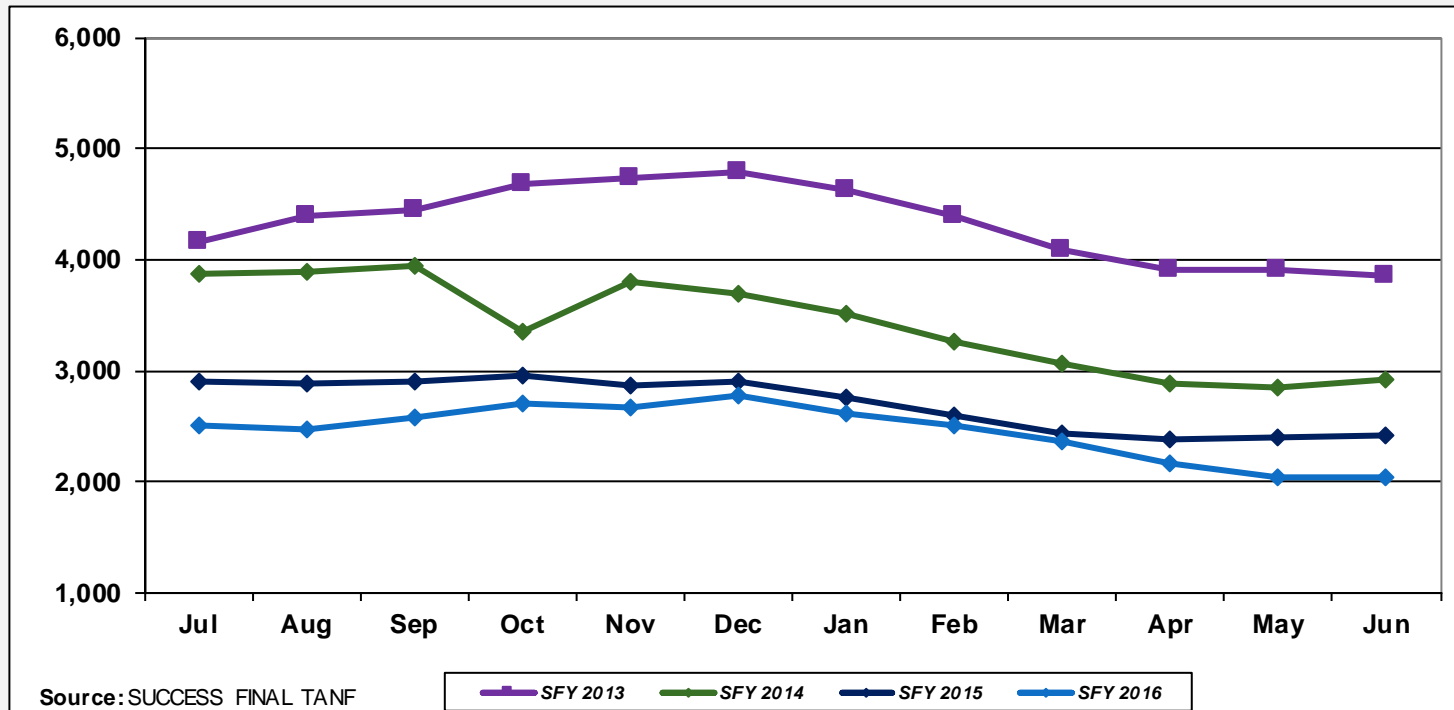
## Outcome III: Total Number of TANF Recipients



Jul	Aug	Sep	Oct	Nov	Dec	Jan	Feb	Mar	Apr	May	Jun
18,283	18,452	18,324	18,567	18,559	18,603	18,381	18,025	17,638	17,285	17,226	17,109
17,057	16,970	16,913	16,251	16,557	16,353	15,992	15,452	15,154	14,915	14,729	14,600
14,383	14,074	14,052	14,056	13,829	13,820	13,526	13,051	12,974	12,955	12,952	12,924
13,011	12,976	13,085	13,222	13,165	13,293	13,050	12,913	12,770	12,519	12,345	12,408



## Outcome IV: TANF Cases – Adult

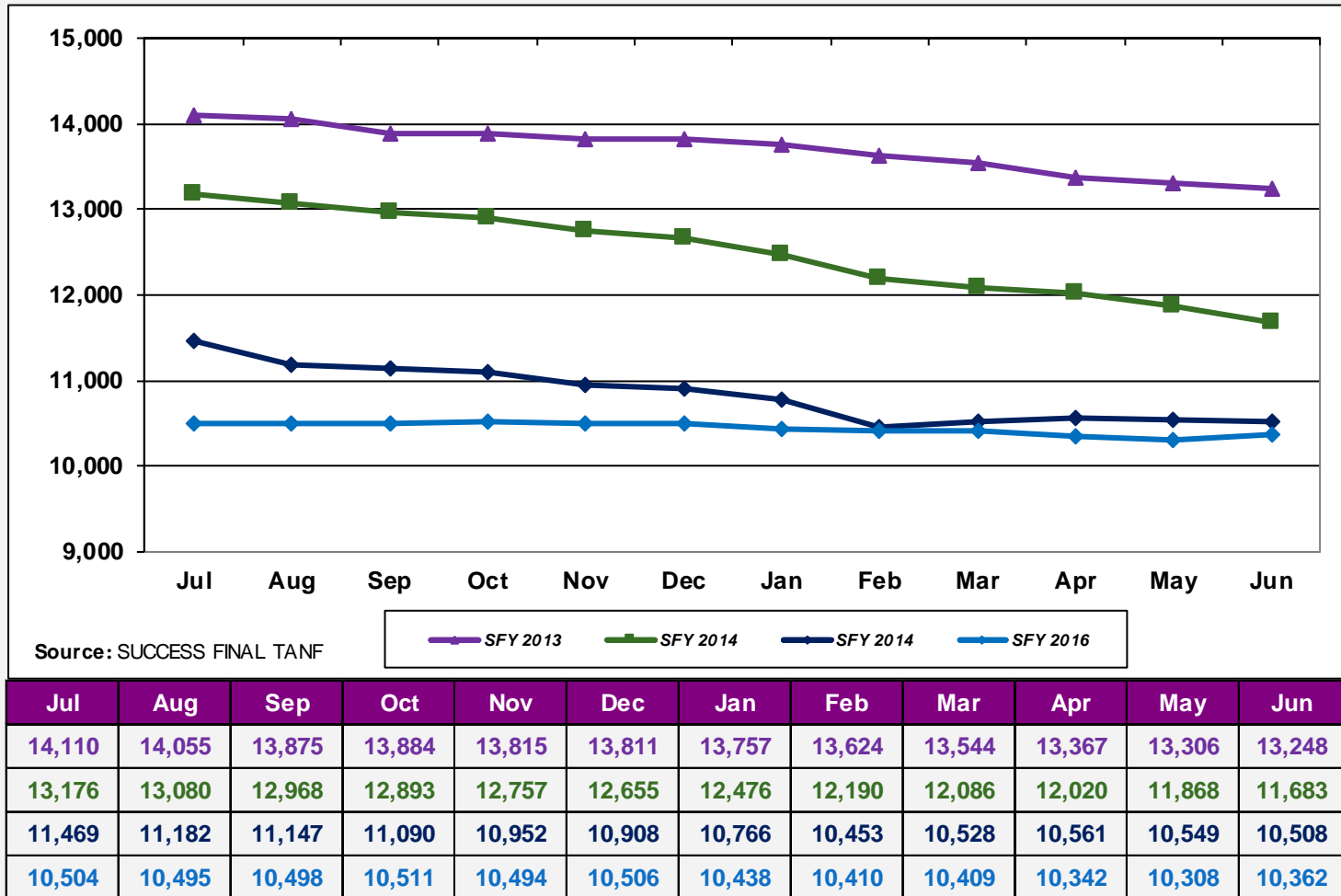


Jul	Aug	Sep	Oct	Nov	Dec	Jan	Feb	Mar	Apr	May	Jun
4,173	4,397	4,449	4,683	4,744	4,792	4,624	4,401	4,094	3,918	3,920	3,861
3,881	3,890	3,945	3,358	3,800	3,698	3,516	3,262	3,068	2,895	2,861	2,917
2,914	2,892	2,905	2,966	2,877	2,912	2,760	2,598	2,446	2,394	2,403	2,416
2,507	2,481	2,587	2,711	2,671	2,787	2,612	2,503	2,361	2,177	2,037	2,046

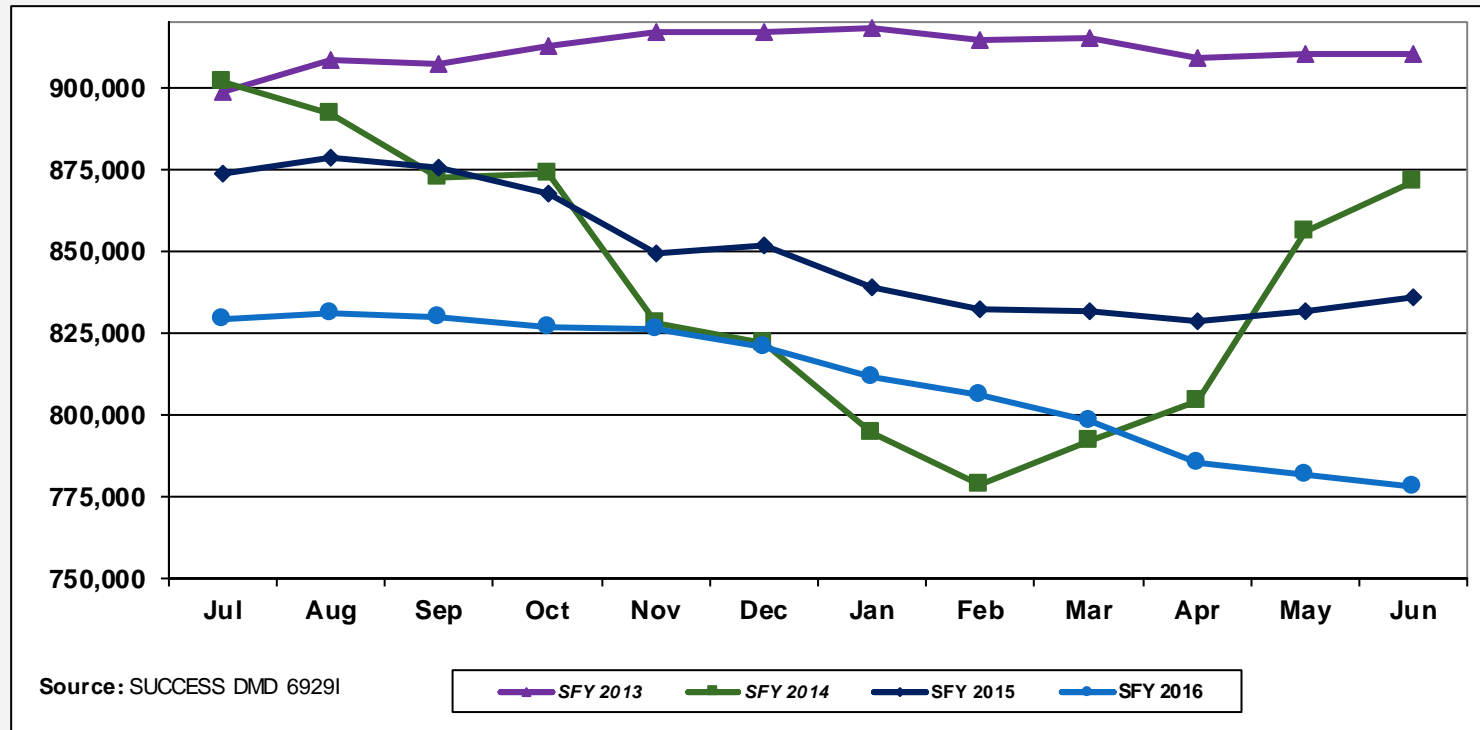




## Outcome V: TANF Cases – Child-Only



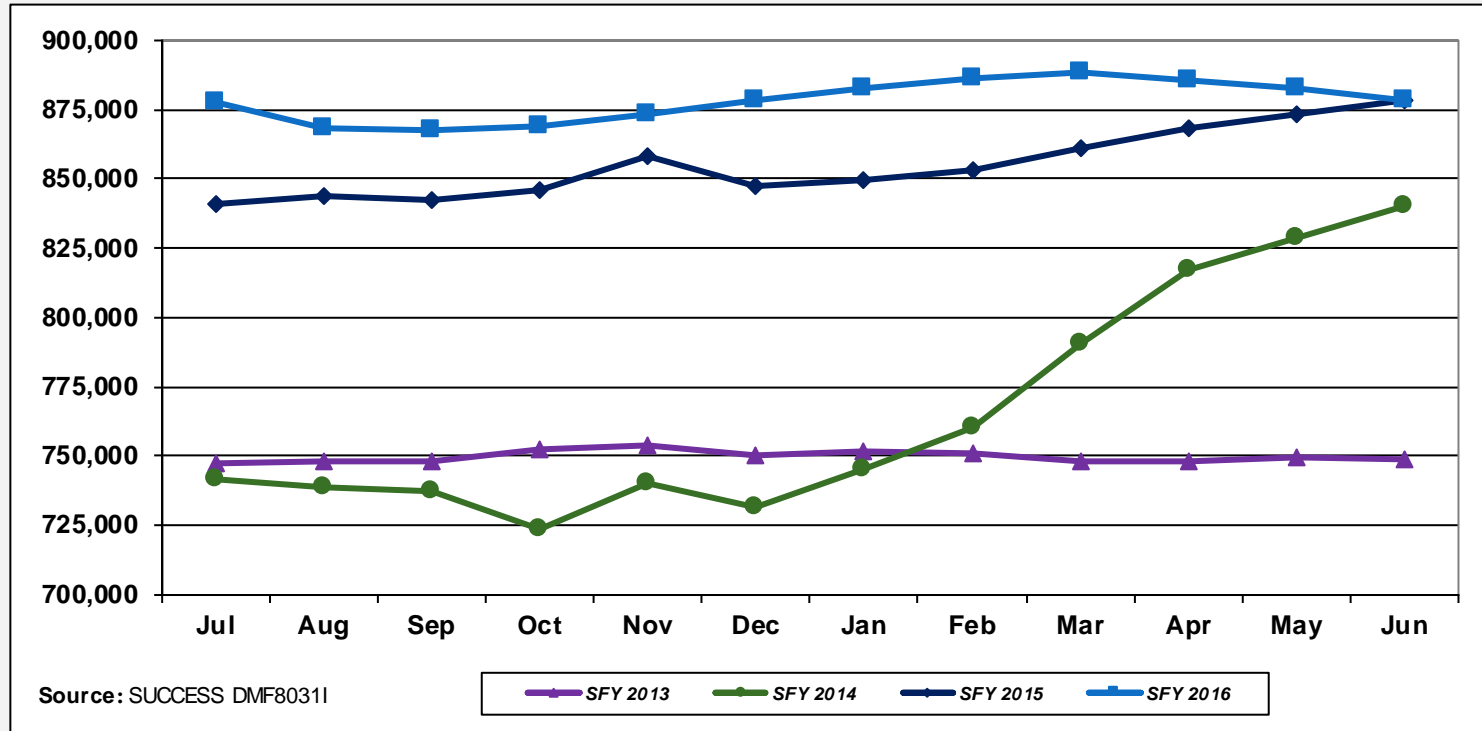
## Outcome VI: Food Stamp Cases



Jul	Aug	Sep	Oct	Nov	Dec	Jan	Feb	Mar	Apr	May	Jun
898,825	908,470	907,170	912,759	917,359	916,944	918,712	914,716	915,353	909,217	910,627	910,442
901,963	892,156	872,518	874,110	828,293	822,027	794,600	778,913	792,133	804,798	856,465	871,803
874,132	878,554	875,992	868,027	849,830	852,279	838,949	832,518	832,014	828,707	831,818	836,051
829,252	831,209	830,375	826,889	826,196	821,182	811,941	806,306	798,628	785,736	781,834	778,478



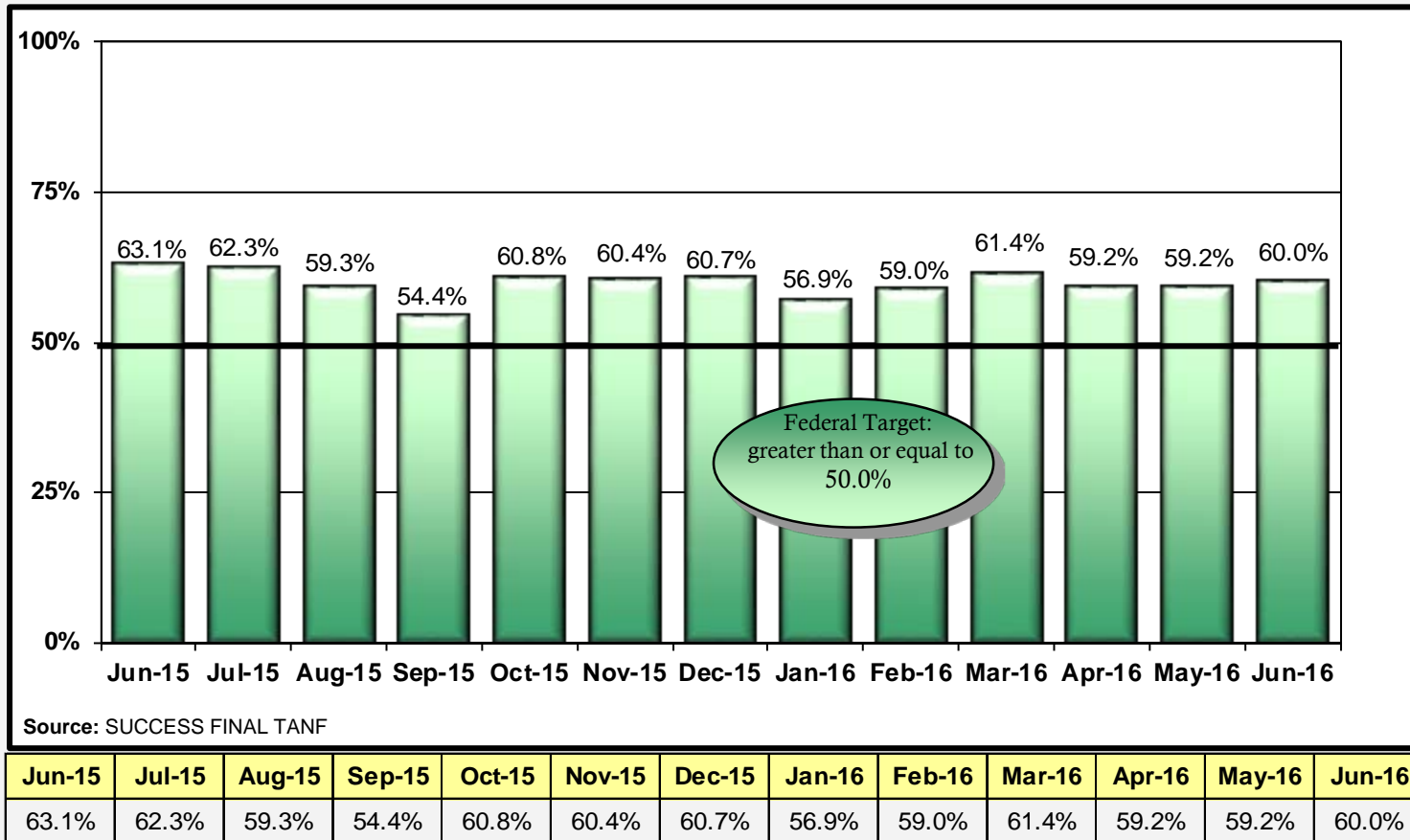
## Outcome VII: Medicaid Cases



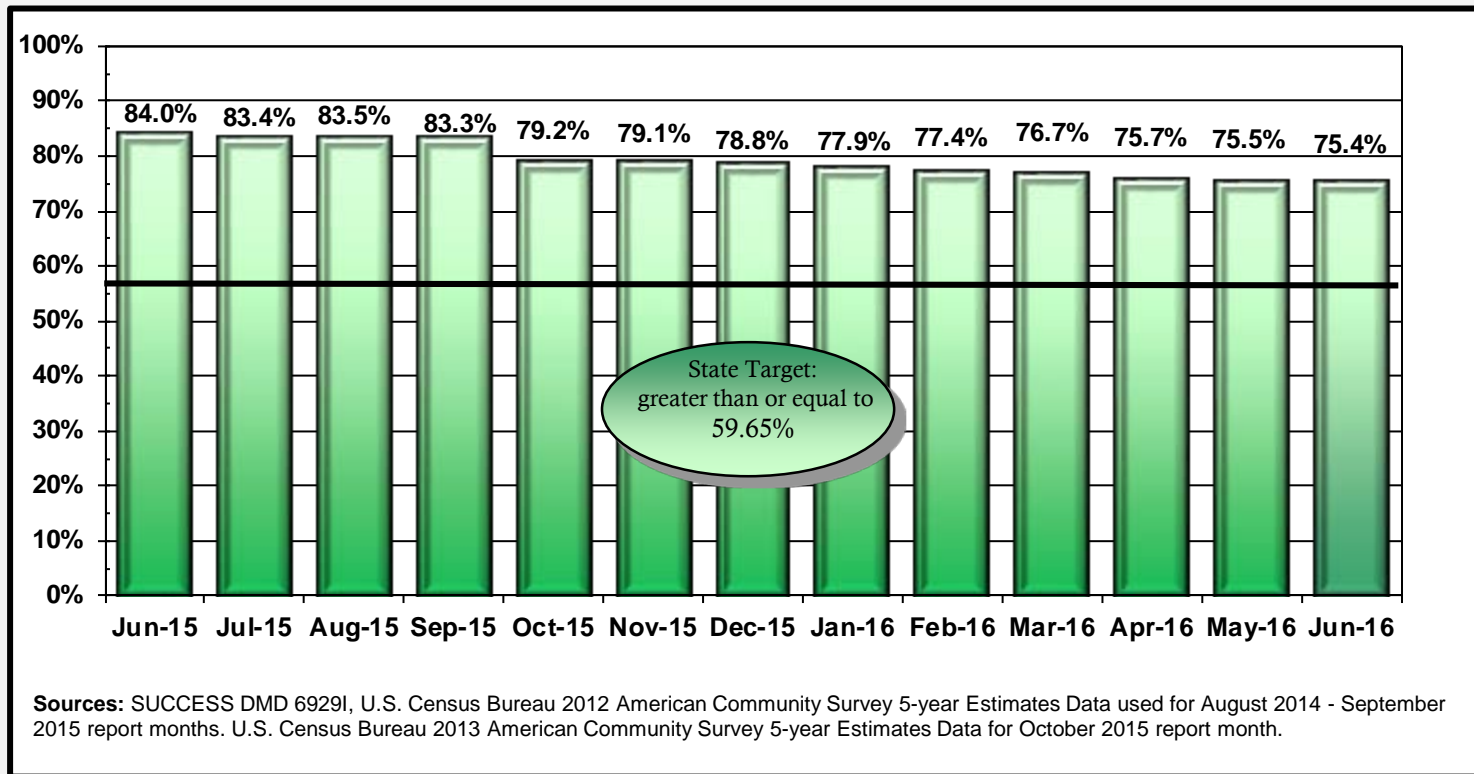
Jul	Aug	Sep	Oct	Nov	Dec	Jan	Feb	Mar	Apr	May	Jun
747,084	748,088	747,833	752,253	753,613	750,240	751,630	751,236	747,918	748,048	749,745	748,509
741,543	738,468	737,583	723,489	740,106	731,209	745,040	760,199	790,866	816,889	828,937	840,127
841,054	843,904	842,498	846,225	858,497	847,540	849,400	853,387	860,826	868,006	873,268	878,738
877,570	868,025	867,666	869,318	873,748	878,164	882,635	886,025	888,758	885,987	883,112	878,132



## Outcome VIII: TANF Work Participation Rate



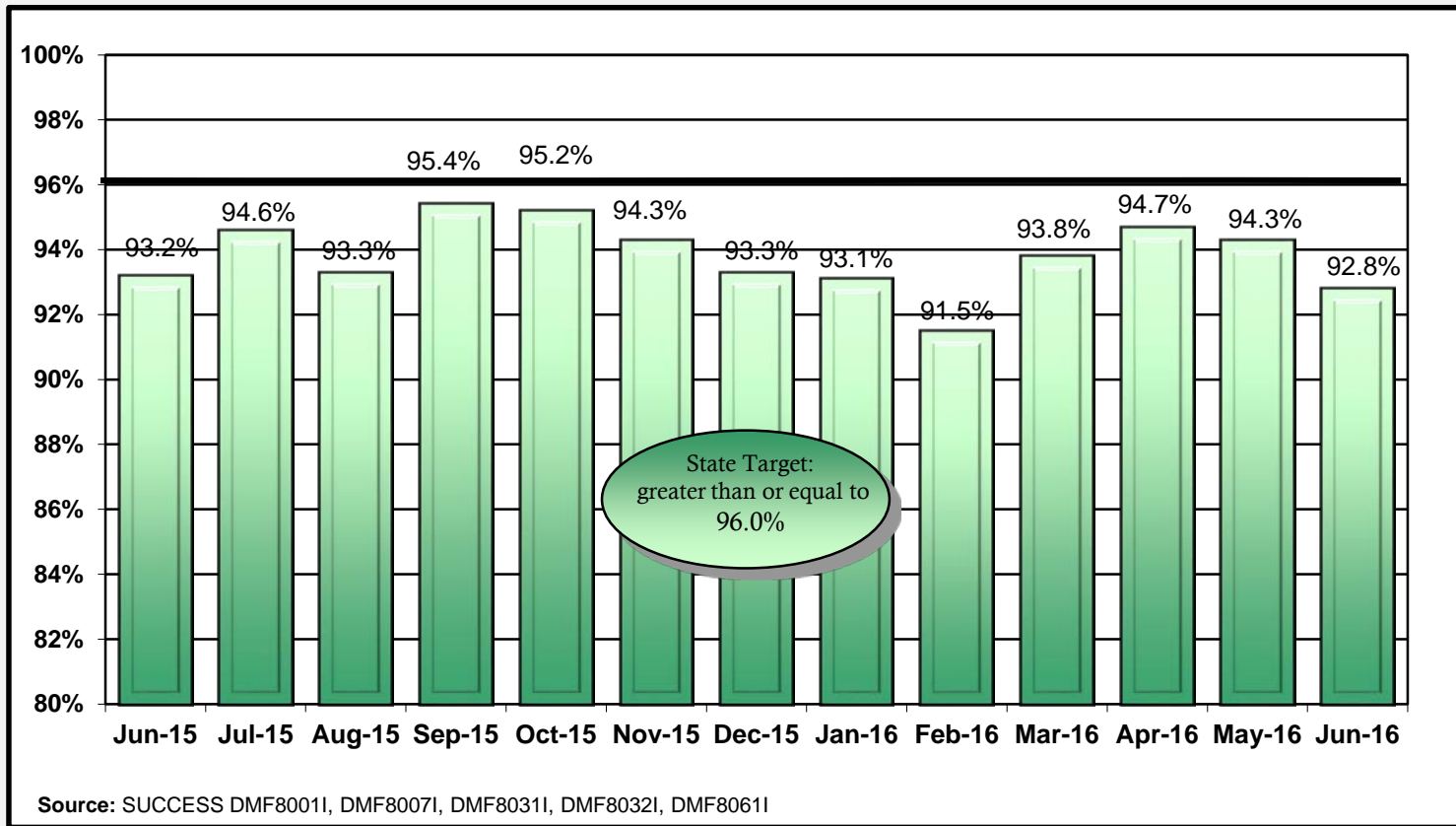
## Outcome IX: Food Stamp Participation Rate



Jun-15	Jul-15	Aug-15	Sep-15	Oct-15	Nov-15	Dec-15	Jan-16	Feb-16	Mar-16	Apr-16	May-16	Jun-16
84.0%	83.4%	83.5%	83.3%	79.2%	79.1%	78.8%	77.9%	77.4%	76.7%	75.7%	75.5%	75.4%



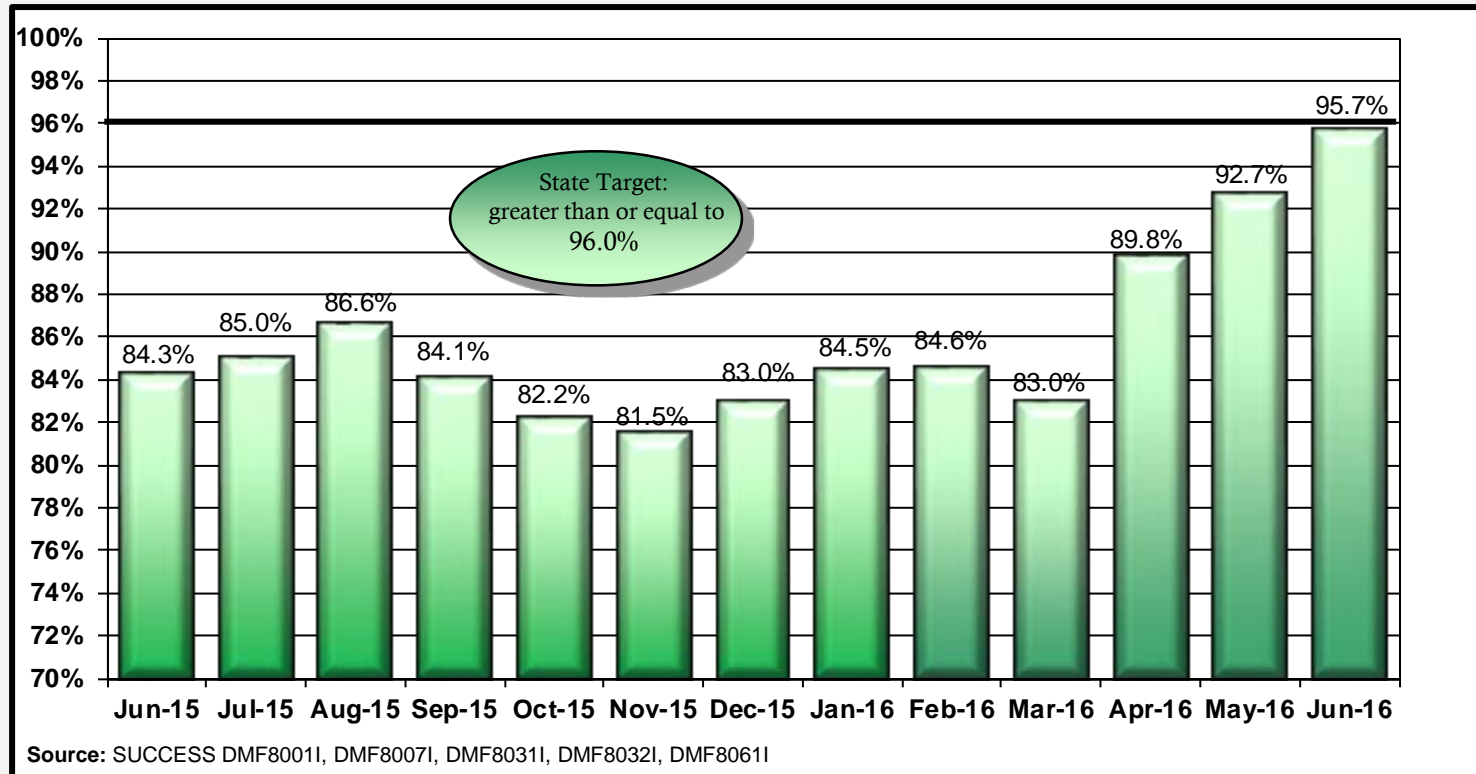
# Outcome X: Medicaid (ABD) Standard of Promptness



Jun-15	Jul-15	Aug-15	Sep-15	Oct-15	Nov-15	Dec-15	Jan-16	Feb-16	Mar-16	Apr-16	May-16	Jun-16
93.2%	94.6%	93.3%	95.4%	95.2%	94.3%	93.3%	93.1%	91.5%	93.8%	94.7%	94.3%	92.8%



# Outcome XI: Medicaid (Family) Standard of Promptness



Jun-15	Jul-15	Aug-15	Sep-15	Oct-15	Nov-15	Dec-15	Jan-16	Feb-16	Mar-16	Apr-16	May-16	Jun-16
84.3%	85.0%	86.6%	84.1%	82.2%	81.5%	83.0%	84.5%	84.6%	83.0%	89.8%	92.7%	95.7%

