

# Family Independence



## Outcome Measures and Results March 2009



**Definitions and Data Sources**

**Pages**

**TANF Cases (Total/Adult/Child Only)**

1 - 2

Includes all cases active at some time during the month  
*Source: SUCCESS*

**Food Stamp Cases**

3

Includes all cases active at some time during the month  
*Source: SUCCESS*

**Medicaid Cases**

3

Includes case active at the end of the month  
*Source: SUCCESS*

**TANF Work Participation Rate**

4

Of all the families with a Temporary Assistance to Needy Families (TANF) work requirement, the percentage of families that met the work requirement. **State Target: greater than or equal to 70%**

**Food Stamp Participation Rate**

4

The ratio of number of food stamp persons over the estimated persons at or below 125% of the poverty level. **State Target: greater than or equal to 59.65%**  
*Source: SUCCESS, US Census Bureau*

**Medicaid (ABD) Standard of Promptness**

5

Of all the Aged, Blind, Disabled Medicaid applications for benefits, the percentage that was completed within the mandated Standard of Promptness (SOP). **State Target: greater than or equal to 96.0%**  
*Source: SUCCESS*

**Medicaid (Family) Standard of Promptness**

5

Of all the Family Medicaid applications for benefits, the percentage that was completed within the mandated Standard of Promptness (SOP). **State Target: greater than or equal to 96.0%**  
*Source: SUCCESS*

**Food Stamp Unexpedited (Regular) Standard of Promptness**

6

Of all the Unexpedited applications for benefits, the percentage that was completed within the mandated Standard of Promptness (SOP). **State Target: greater than or equal to 97.0%**

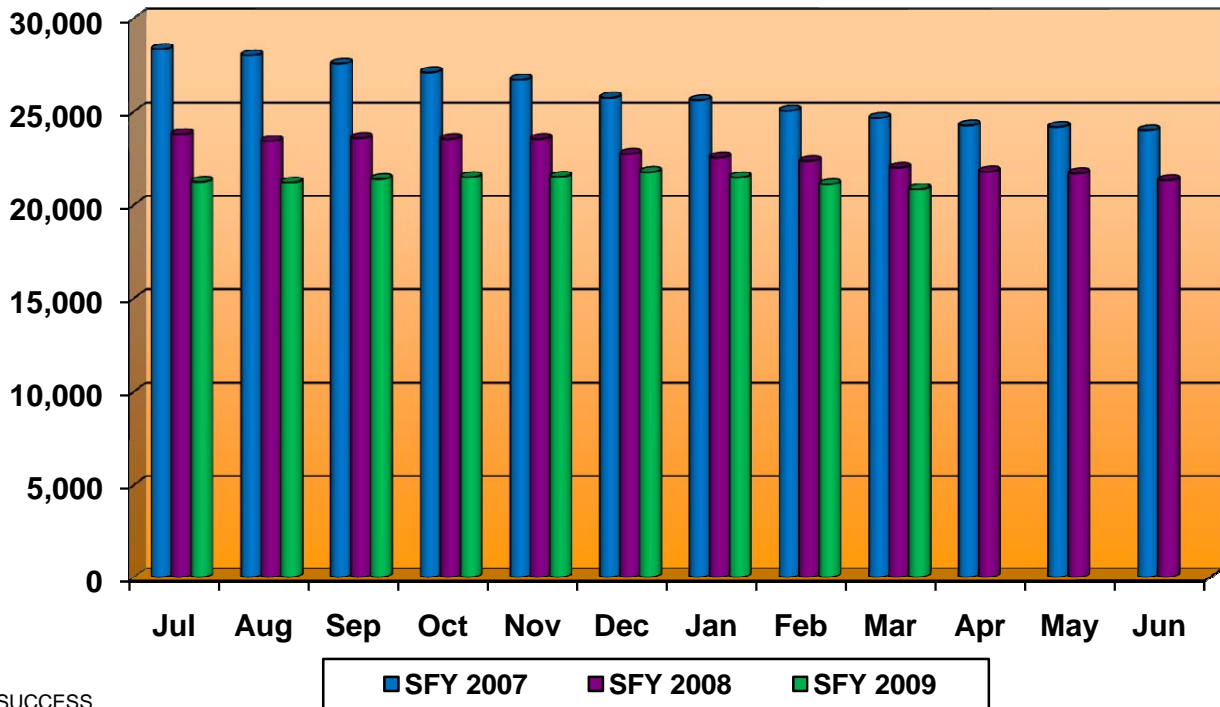
**Food Stamp Expedited Standard of Promptness**

6

Of all the Expedited applications for benefits, the percentage that was completed within the mandated Standard



### TANF Cases

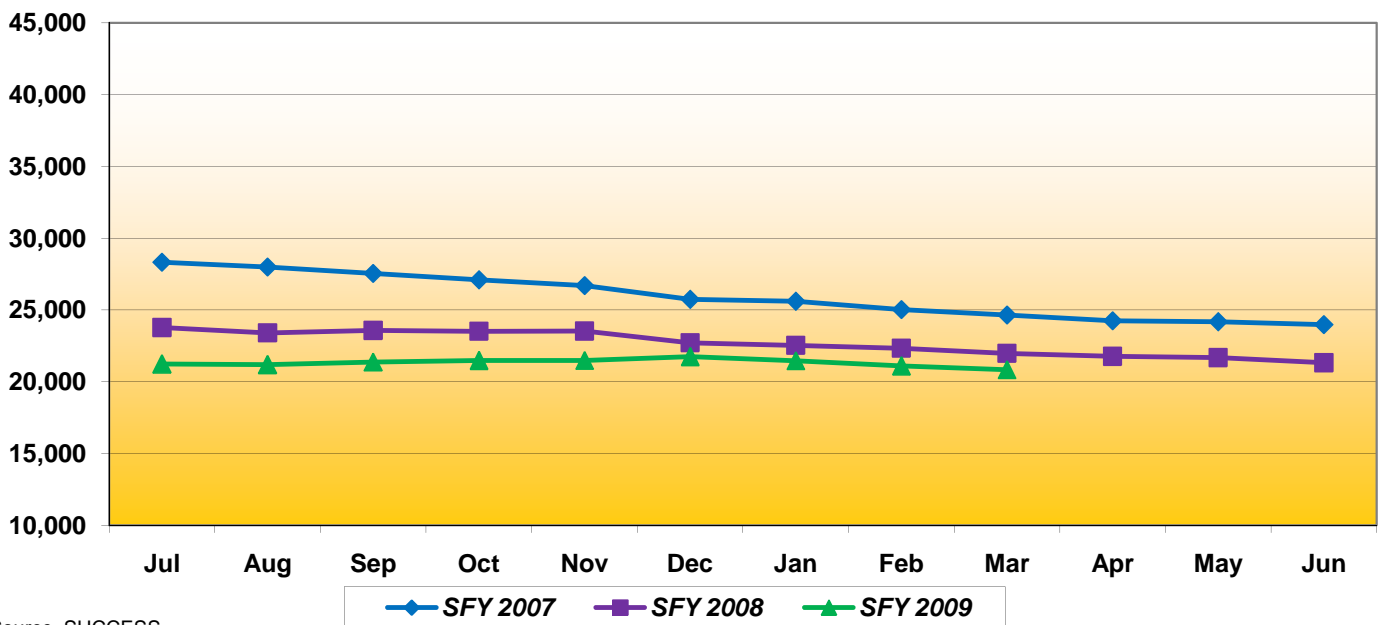


Source: SUCCESS

Jul	Aug	Sep	Oct	Nov	Dec	Jan	Feb	Mar	Apr	May	Jun
28,335	28,003	27,553	27,097	26,702	25,739	25,599	25,031	24,649	24,252	24,175	23,983
23,778	23,410	23,574	23,521	23,525	22,719	22,538	22,336	21,977	21,768	21,678	21,318
21,231	21,189	21,378	21,478	21,494	21,743	21,467	21,098	20,837			

**Note:** Due to the Deficit Reduction Act (DRA) that reauthorized TANF, the caseload and work participation rates have been revised beginning October 2007. These changes impact the way in which adults are selected and the calculation of hours in some of the work activities.

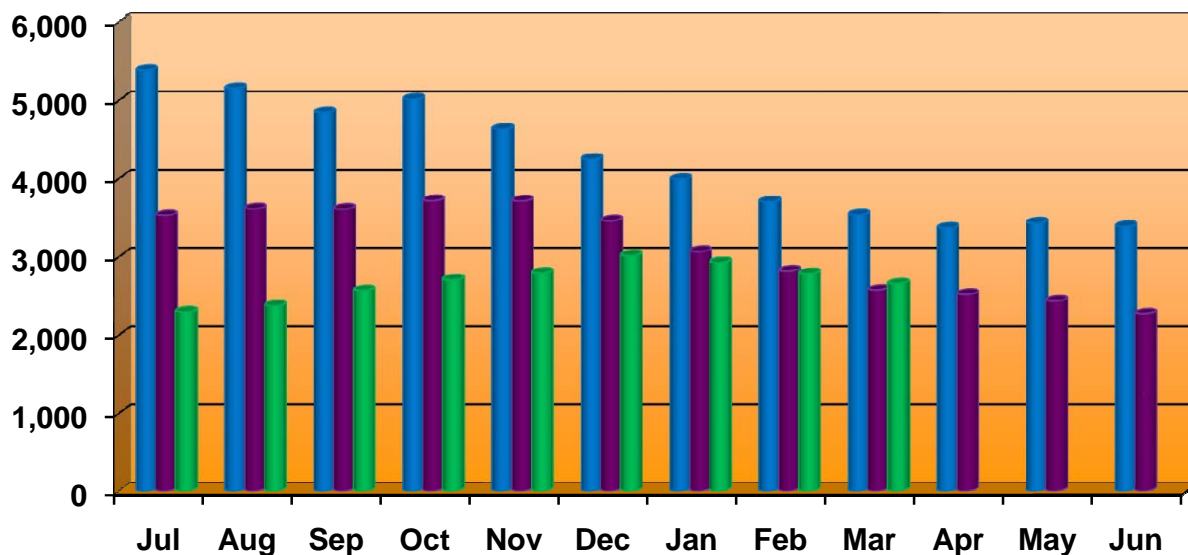
### TANF Cases



Source: SUCCESS

Jul	Aug	Sep	Oct	Nov	Dec	Jan	Feb	Mar	Apr	May	Jun
28,335	28,003	27,553	27,097	26,702	25,739	25,599	25,031	24,649	24,252	24,175	23,983
23,778	23,410	23,574	23,521	23,525	22,719	22,538	22,336	21,977	21,768	21,678	21,318
21,231	21,189	21,378	21,478	21,494	21,743	21,467	21,098	20,837			

## TANF Cases - Adult



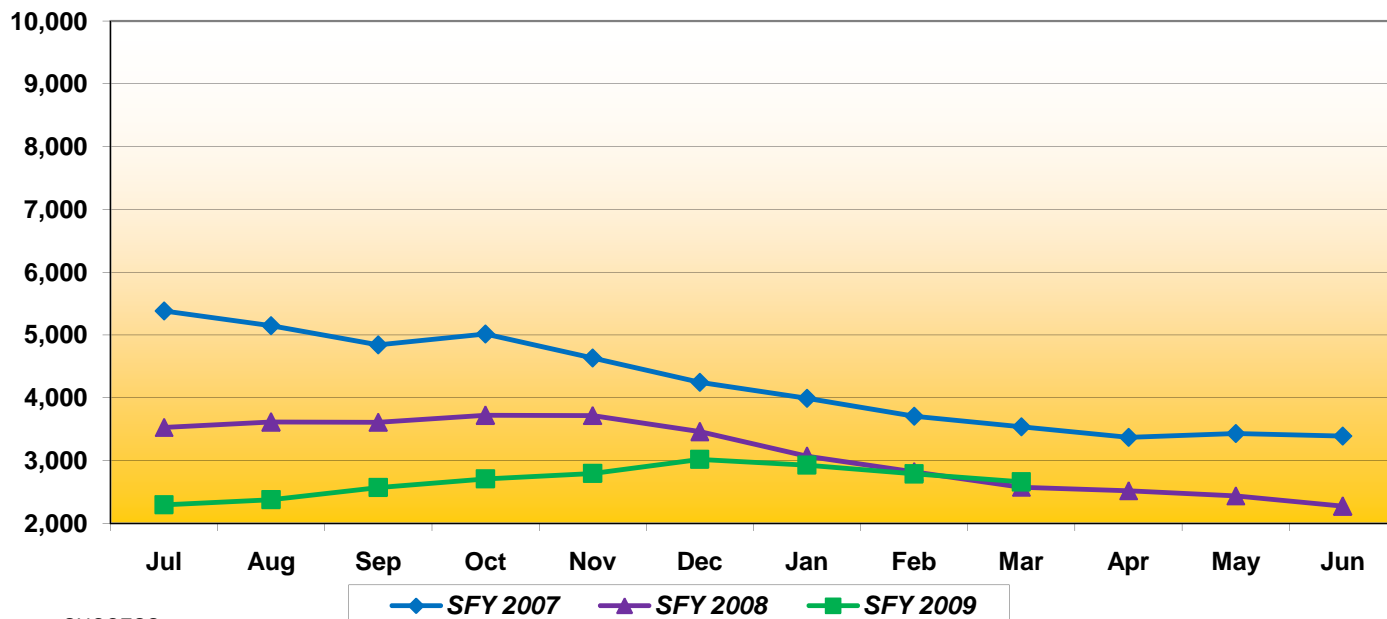
Source: SUCCESS

■ SFY 2007   
 ■ SFY 2008   
 ■ SFY 2009

Jul	Aug	Sep	Oct	Nov	Dec	Jan	Feb	Mar	Apr	May	Jun
5,386	5,152	4,844	5,018	4,635	4,250	3,994	3,707	3,539	3,372	3,434	3,392
3,530	3,615	3,611	3,722	3,718	3,461	3,069	2,819	2,576	2,521	2,439	2,273
2,297	2,378	2,571	2,709	2,795	3,019	2,928	2,788	2,660			

**Note:** Due to the Deficit Reduction Act (DRA) that reauthorized TANF, the caseload and work participation rates have been revised beginning October 2007. These changes impact the way in which adults are selected and the calculation of hours in some of the work activities.

## TANF Cases - Adult

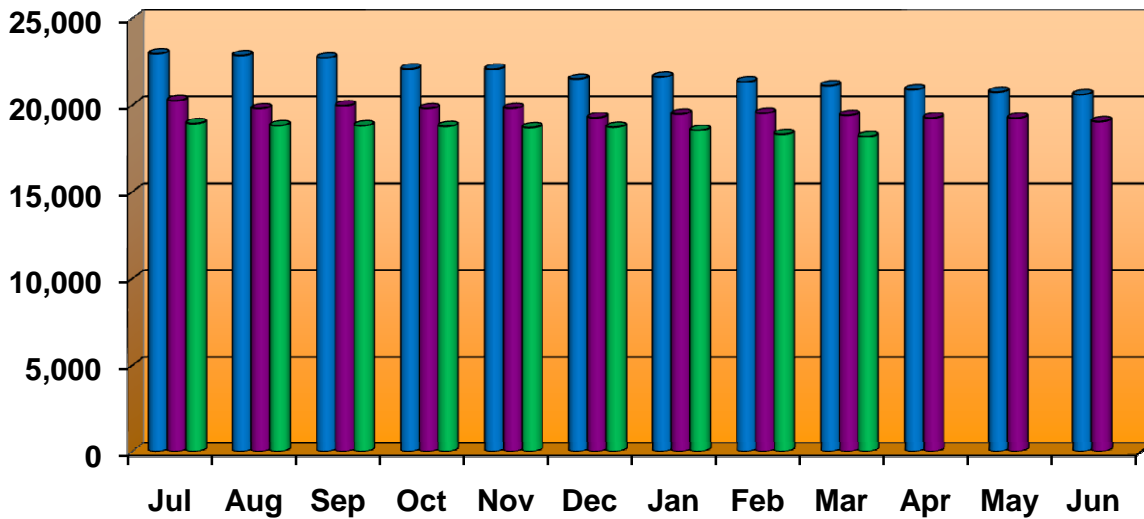


Source: SUCCESS

◆ SFY 2007   
 ▲ SFY 2008   
 ■ SFY 2009

Jul	Aug	Sep	Oct	Nov	Dec	Jan	Feb	Mar	Apr	May	Jun
5,386	5,152	4,844	5,018	4,635	4,250	3,994	3,707	3,539	3,372	3,434	3,392
3,530	3,615	3,611	3,722	3,718	3,461	3,069	2,819	2,576	2,521	2,439	2,273
2,297	2,378	2,571	2,709	2,795	3,019	2,928	2,788	2,660			

### TANF Cases - Child Only



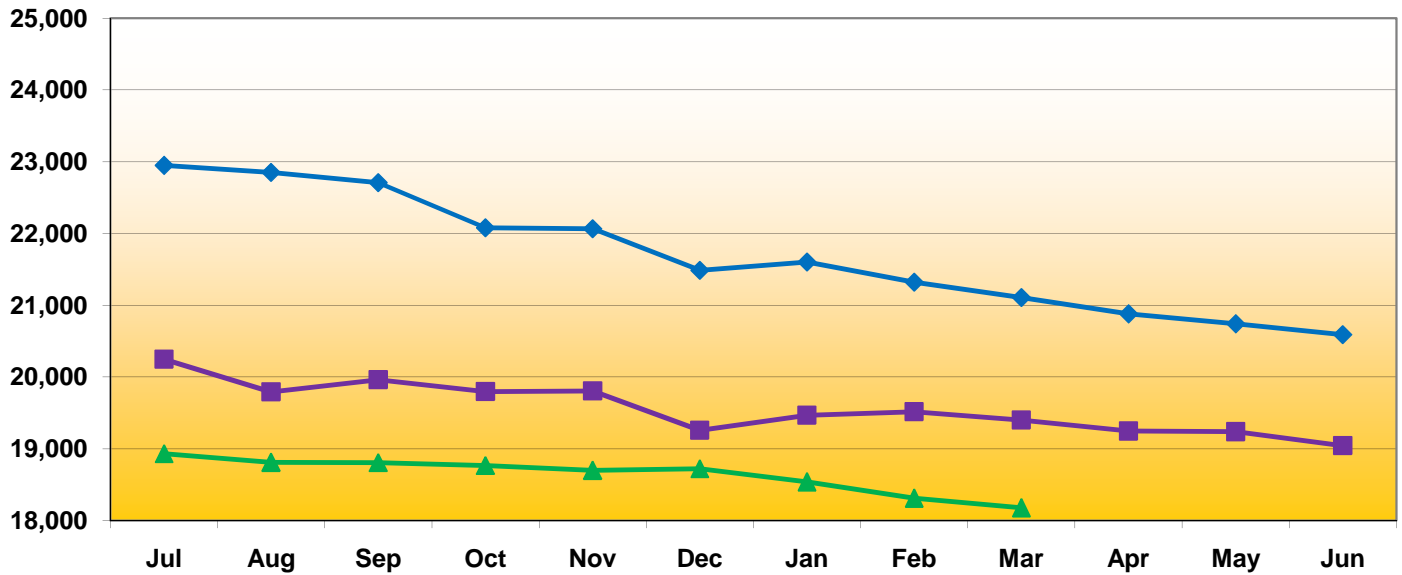
Source: SUCCESS

■ SFY 2007 ■ SFY 2008 ■ SFY 2009

Jul	Aug	Sep	Oct	Nov	Dec	Jan	Feb	Mar	Apr	May	Jun
22,949	22,851	22,709	22,079	22,067	21,489	21,605	21,324	21,110	20,880	20,741	20,591
20,248	19,794	19,963	19,797	19,807	19,258	19,469	19,517	19,401	19,247	19,239	19,045
18,934	18,811	18,807	18,769	18,699	18,724	18,539	18,310	18,177			

**Note:** Due to the Deficit Reduction Act (DRA) that reauthorized TANF, the caseload and work participation rates have been revised beginning October 2007. These changes impact the way in which adults are selected and the calculation of hours in some of the work activities.

### TANF Cases - Child Only

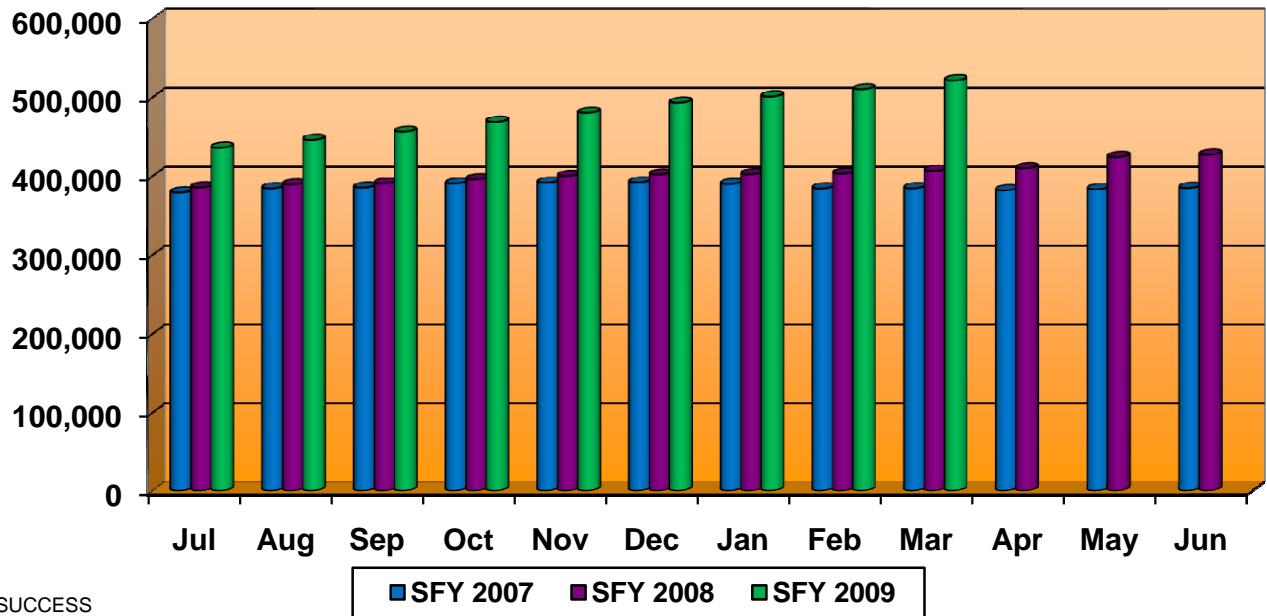


Source: SUCCESS

◆ SFY 2007 ■ SFY 2008 ▲ SFY 2009

Jul	Aug	Sep	Oct	Nov	Dec	Jan	Feb	Mar	Apr	May	Jun
22,949	22,851	22,709	22,079	22,067	21,489	21,605	21,324	21,110	20,880	20,741	20,591
20,248	19,794	19,963	19,797	19,807	19,258	19,469	19,517	19,401	19,247	19,239	19,045
18,934	18,811	18,807	18,769	18,699	18,724	18,539	18,310	18,177			

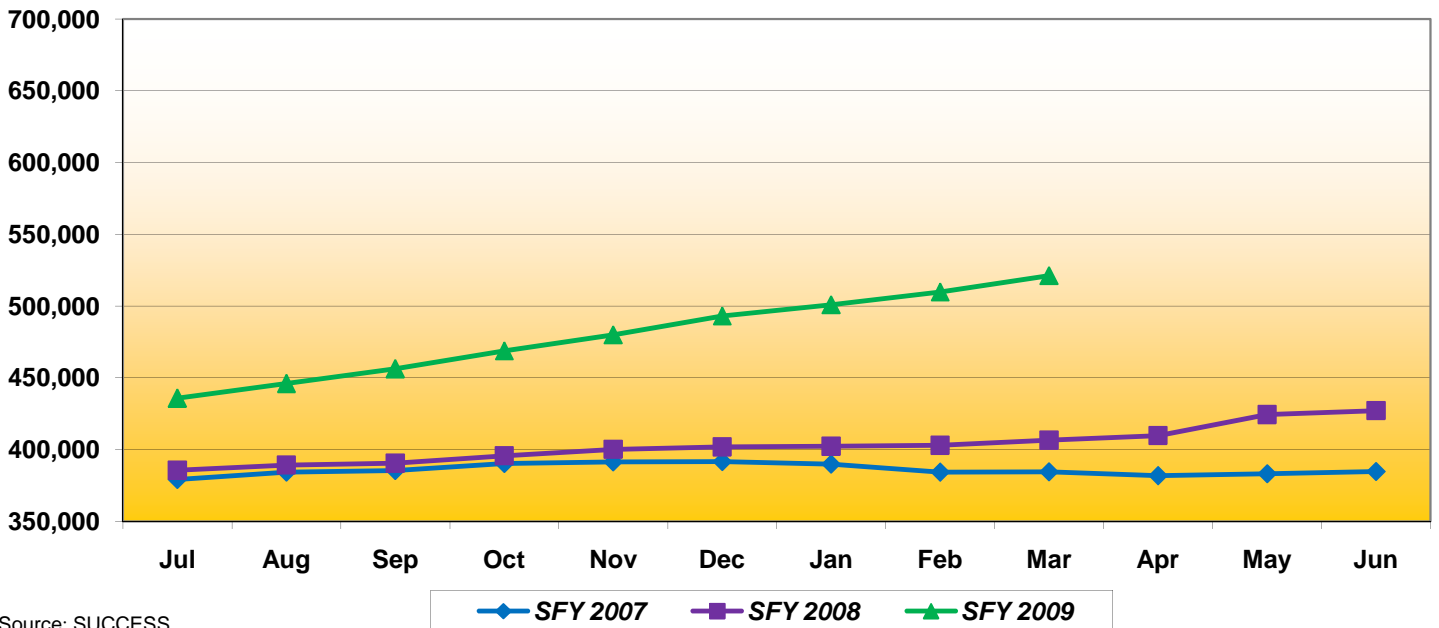
### Food Stamp Cases



Source: SUCCESS

Jul	Aug	Sep	Oct	Nov	Dec	Jan	Feb	Mar	Apr	May	Jun
379,188	384,378	385,390	390,446	391,522	391,785	389,868	384,269	384,458	381,828	383,205	384,841
385,577	389,220	390,538	395,695	400,169	401,851	402,330	403,021	406,577	409,839	424,362	427,150
435,804	446,050	456,274	468,848	480,103	493,228	500,954	509,986	521,253			

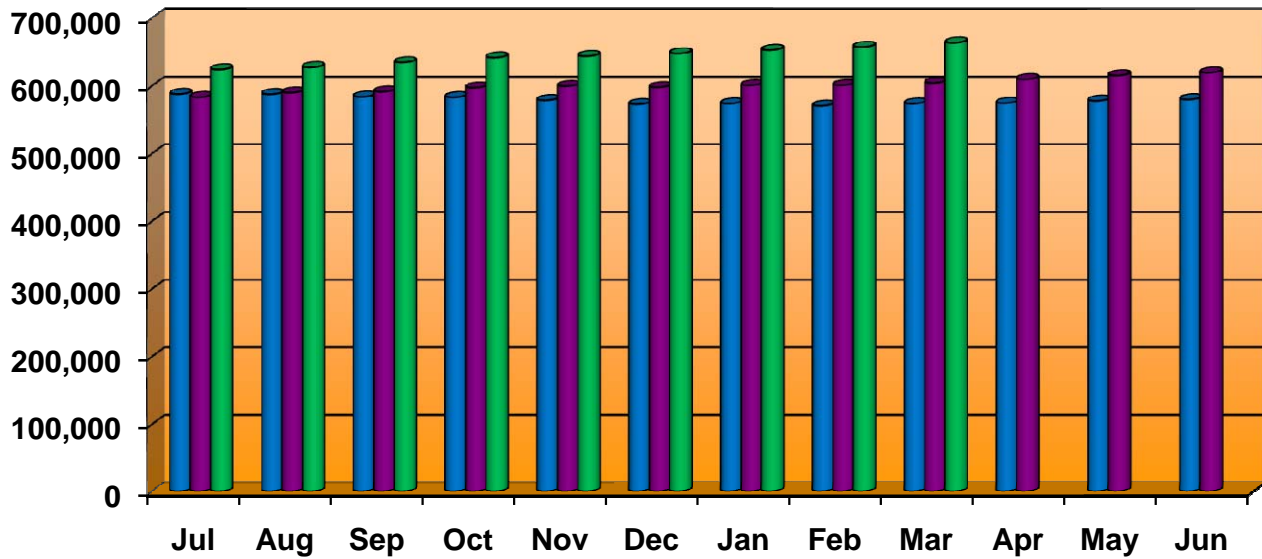
### Food Stamp Cases



Source: SUCCESS

Jul	Aug	Sep	Oct	Nov	Dec	Jan	Feb	Mar	Apr	May	Jun
379,188	384,378	385,390	390,446	391,522	391,785	389,868	384,269	384,458	381,828	383,205	384,841
385,577	389,220	390,538	395,695	400,169	401,851	402,330	403,021	406,577	409,839	424,362	427,150
435,804	446,050	456,274	468,848	480,103	493,228	500,954	509,986	521,253			

### Medicaid Cases

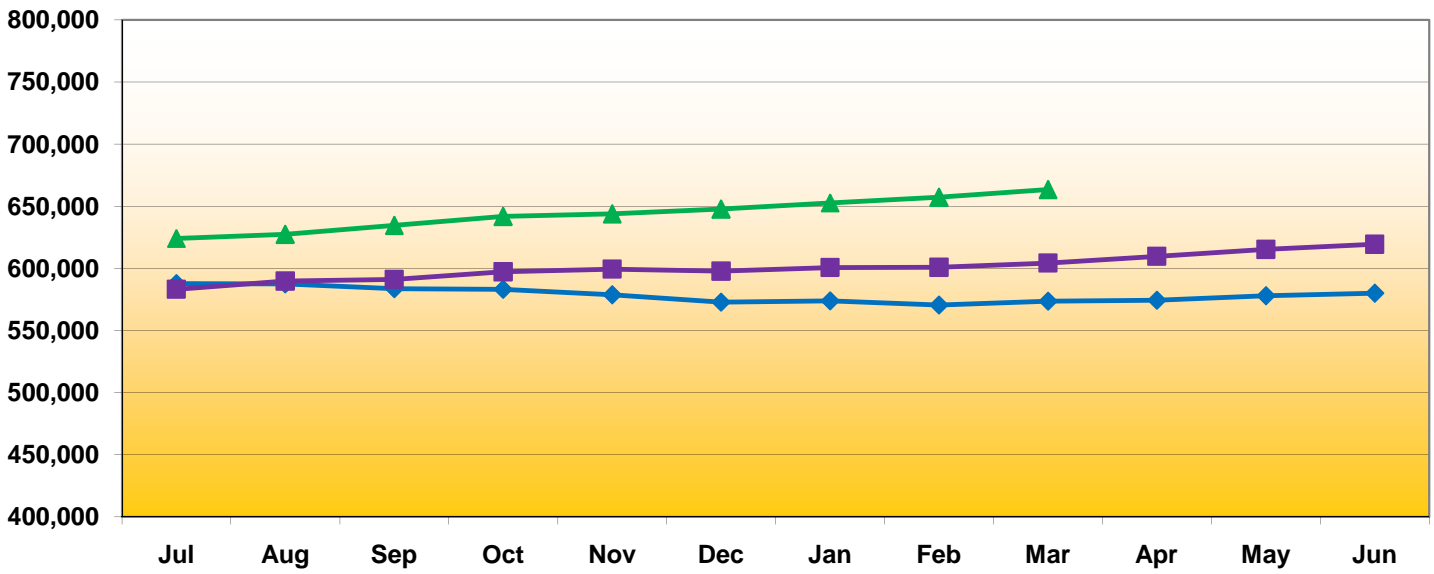


Source: SUCCESS

■ SFY 2007   ■ SFY 2008   ■ SFY 2009

Jul	Aug	Sep	Oct	Nov	Dec	Jan	Feb	Mar	Apr	May	Jun
587,810	587,558	583,754	583,110	578,746	572,899	573,893	570,641	573,712	574,492	577,984	579,952
583,218	589,831	591,259	597,221	599,518	597,777	600,739	600,890	604,355	609,750	615,327	619,436
624,150	627,369	634,654	641,789	643,827	647,760	652,838	657,302	663,485			

### Medicaid Cases



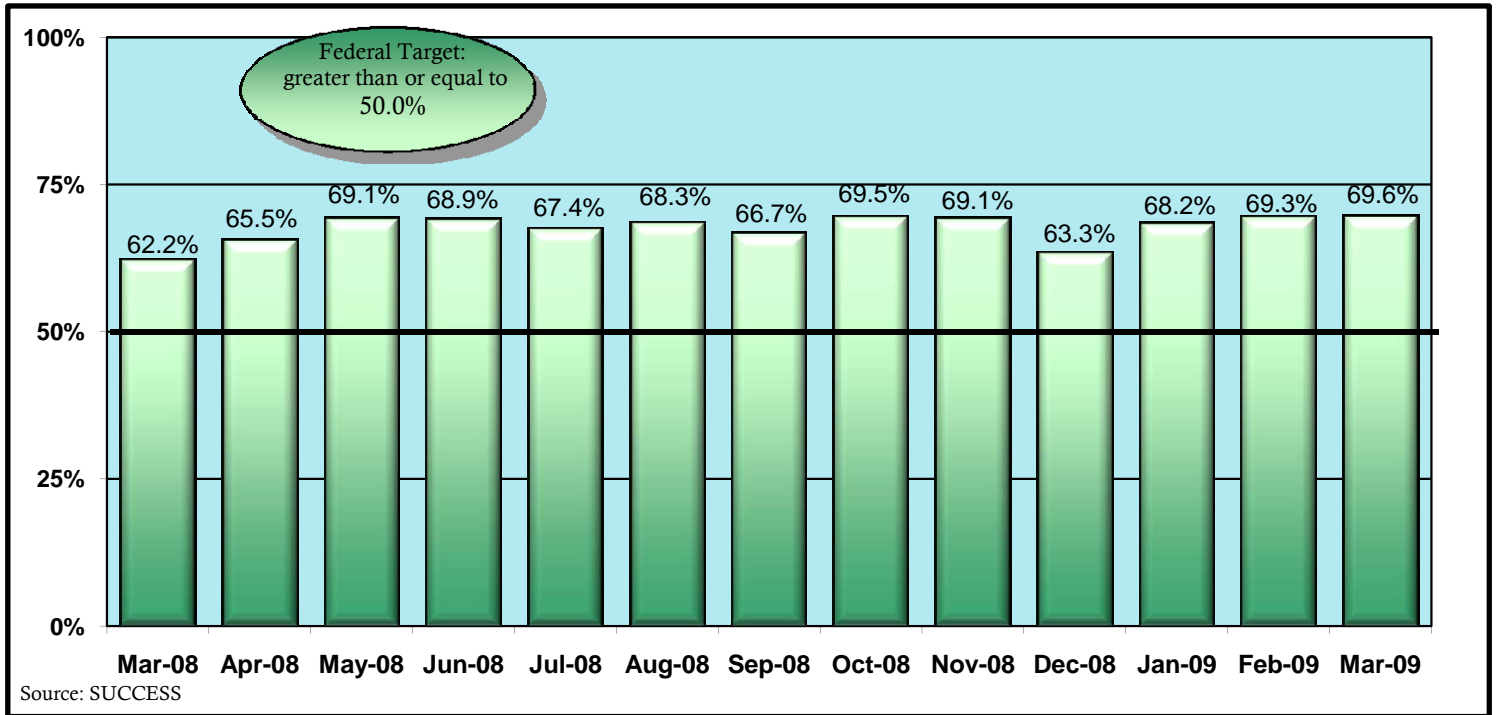
Source: SUCCESS

◆ SFY 2007   ■ SFY 2008   ▲ SFY 2009

Jul	Aug	Sep	Oct	Nov	Dec	Jan	Feb	Mar	Apr	May	Jun
587,810	587,558	583,754	583,110	578,746	572,899	573,893	570,641	573,712	574,492	577,984	579,952
583,218	589,831	591,259	597,221	599,518	597,777	600,739	600,890	604,355	609,750	615,327	619,436
624,150	627,369	634,654	641,789	643,827	647,760	652,838	657,302	663,485			

## TANF Work Participation Rate

Def: Of all the families with a TANF work requirement, the percentage of families that met the work requirement.

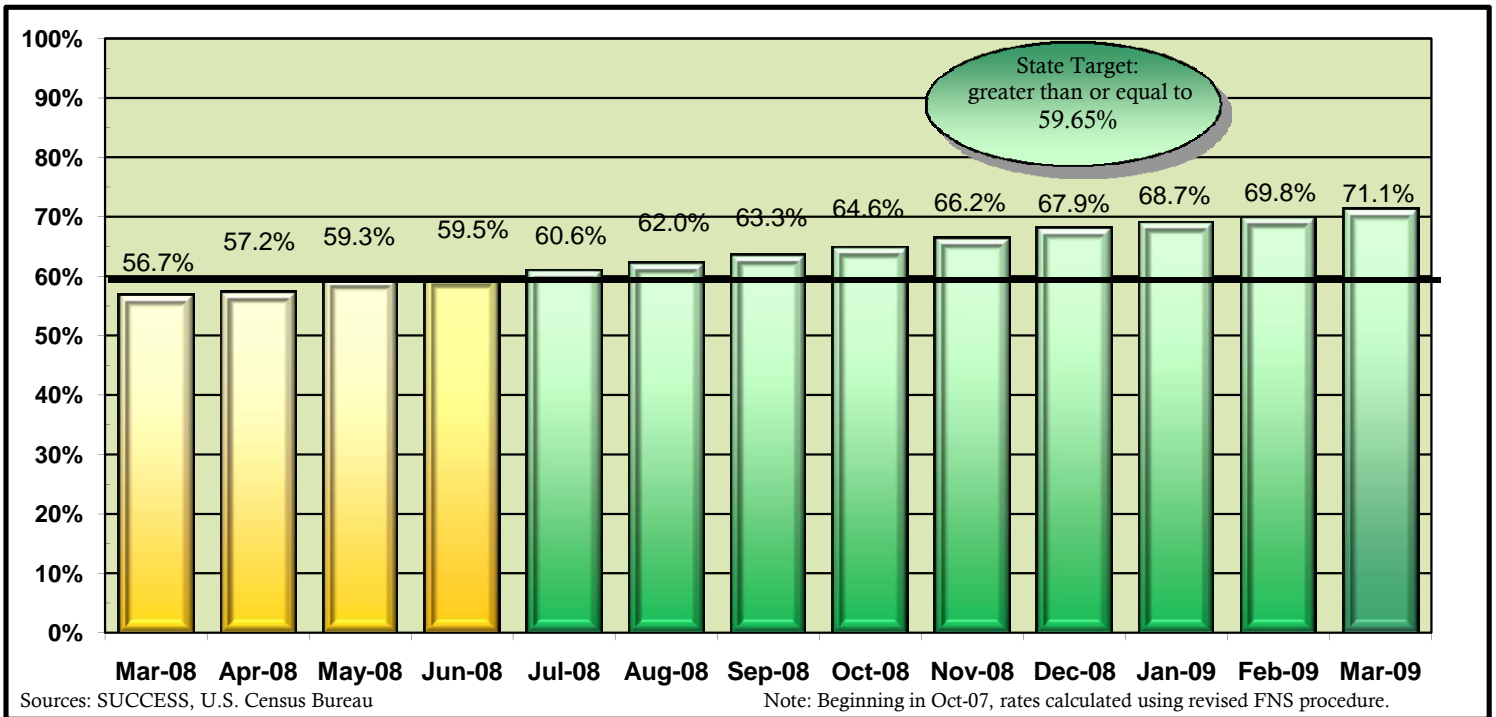


Mar-08	Apr-08	May-08	Jun-08	Jul-08	Aug-08	Sep-08	Oct-08	Nov-08	Dec-08	Jan-09	Feb-09	Mar-09
62.2%	65.5%	69.1%	68.9%	67.4%	68.3%	66.7%	69.5%	69.1%	63.3%	68.2%	69.3%	69.6%

Note: Due to the Deficit Reduction Act (DRA) that reauthorized TANF, the caseload and work participation rates have been revised beginning October 2007. These changes impact the way in which adults are selected and the calculation of hours in some of the work activities.

## Food Stamp Participation Rate

Def: The ratio of number of food stamp persons over the estimated persons at or below 125% of the Poverty level

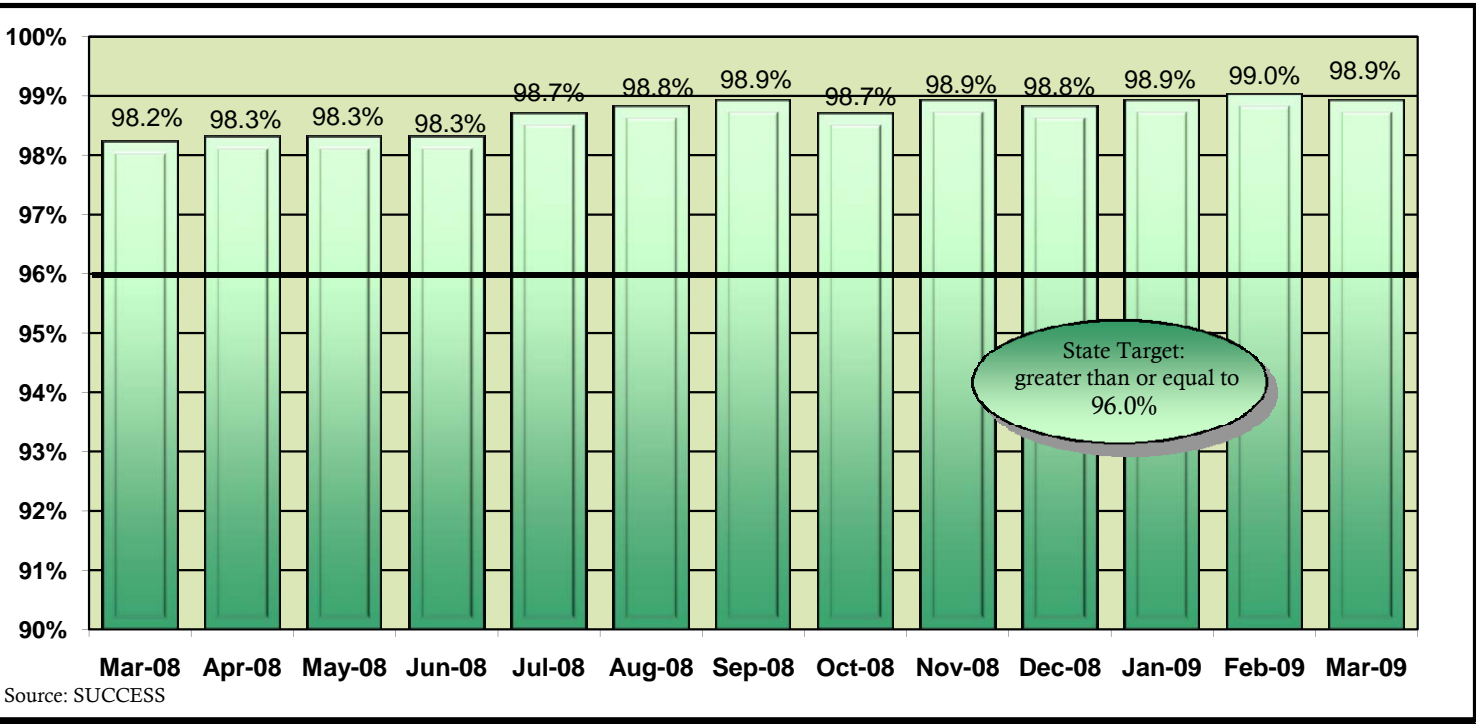


Mar-08	Apr-08	May-08	Jun-08	Jul-08	Aug-08	Sep-08	Oct-08	Nov-08	Dec-08	Jan-09	Feb-09	Mar-09
56.7%	57.2%	59.3%	59.5%	60.6%	62.0%	63.3%	64.6%	66.2%	67.9%	68.7%	69.8%	71.1%



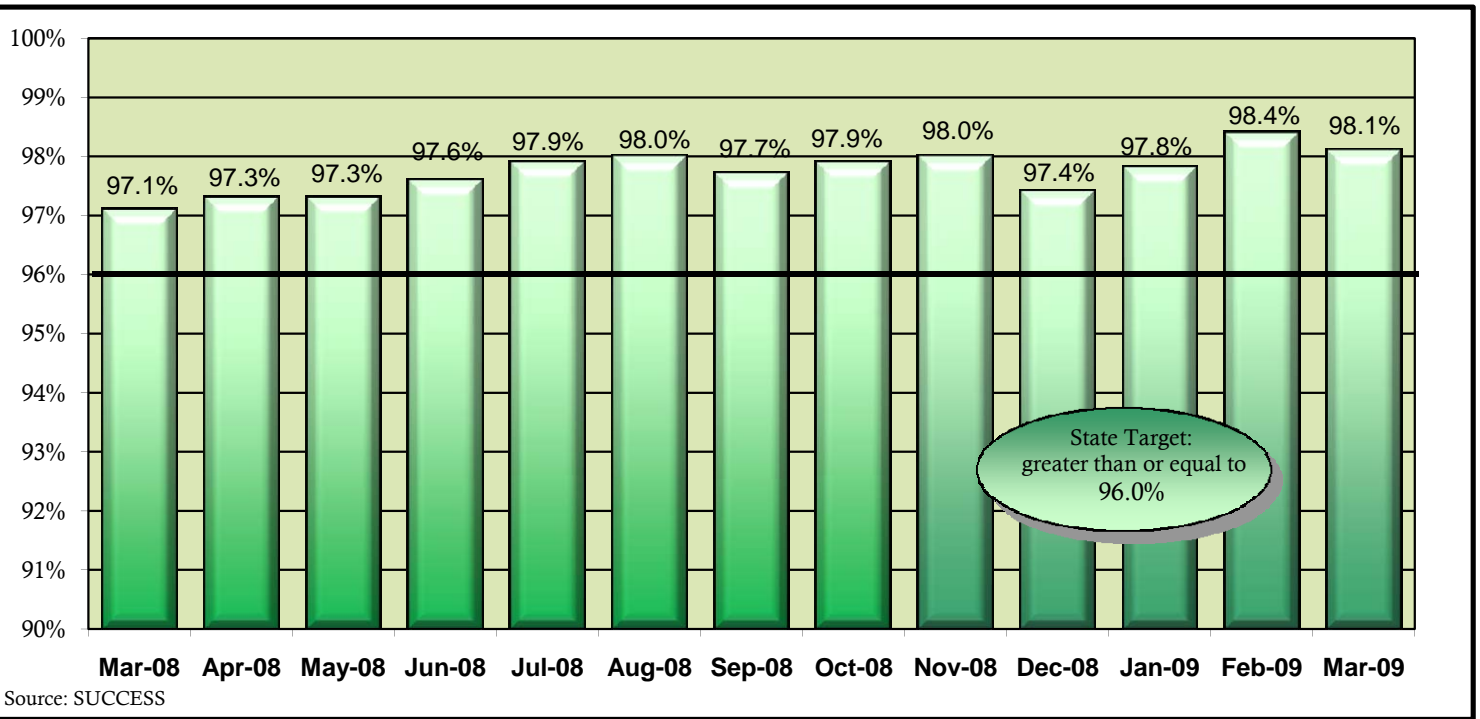
## Medicaid (ABD) SOP

Def: Of all the Aged, Blind, Disabled Medicaid applications for benefits, the percentage that was completed within the mandated Standard of Promptness (SOP).



## Medicaid (Family) SOP

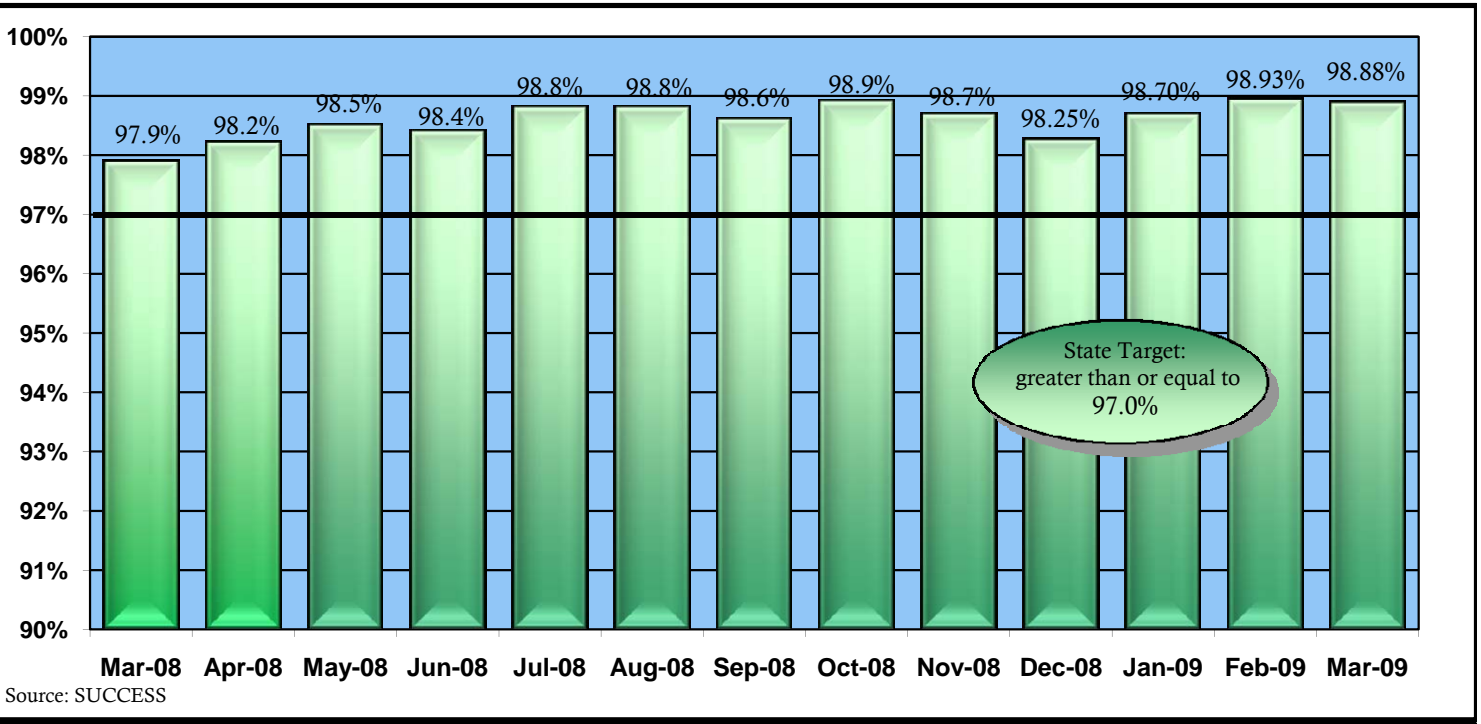
Def: Of all the Family Medicaid applications for benefits, the percentage that was completed within the mandated Standard of Promptness (SOP).



Mar-08	Apr-08	May-08	Jun-08	Jul-08	Aug-08	Sep-08	Oct-08	Nov-08	Dec-08	Jan-09	Feb-09	Mar-09
97.1%	97.3%	97.3%	97.6%	97.9%	98.0%	97.7%	97.9%	98.0%	97.4%	97.8%	98.4%	98.1%

## Food Stamp Unexpedited (Regular) SOP

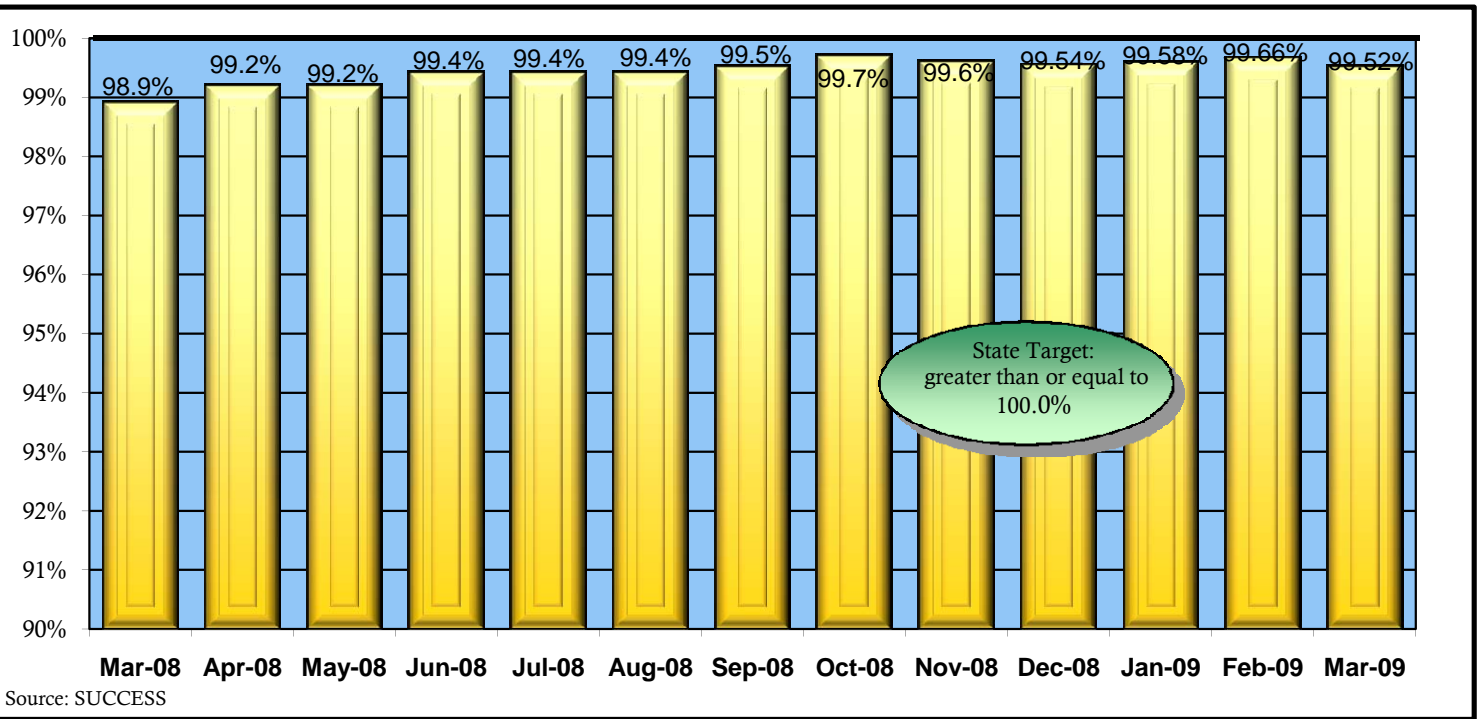
Def: Of all the Unexpedited applications for benefits, the percentage that was completed within the mandated Standard of Promptness (SOP).



Mar-08	Apr-08	May-08	Jun-08	Jul-08	Aug-08	Sep-08	Oct-08	Nov-08	Dec-08	Jan-09	Feb-09	Mar-09
97.9%	98.2%	98.5%	98.4%	98.8%	98.8%	98.6%	98.9%	98.7%	98.25%	98.70%	98.93%	98.88%

## Food Stamp Expedited SOP

Def: Of all the Expedited applications for benefits, the percentage that was completed within the mandated Standard of Promptness (SOP).



Mar-08	Apr-08	May-08	Jun-08	Jul-08	Aug-08	Sep-08	Oct-08	Nov-08	Dec-08	Jan-09	Feb-09	Mar-09
98.9%	99.2%	99.2%	99.4%	99.4%	99.4%	99.5%	99.7%	99.6%	99.54%	99.58%	99.66%	99.52%