

Family Independence



Outcome Measures and Results *November 2009*



Definitions and Data Sources

Pages

TANF Cases (Total/Adult/Child Only)

1 - 2

Includes all cases active at some time during the month
Source: Success

Food Stamp Cases

3

Includes all cases active at some time during the month
Source: SUCCESS DMD6929I

Medicaid Cases

3

Includes case active at the end of the month
Source: SUCCESS DMF8031I

TANF Work Participation Rate

4

Of all the families with a Temporary Assistance to Needy Families (TANF) work requirement, the percentage of families that met the work requirement. **State Target: greater than or equal to 70%**

Food Stamp Participation Rate

4

The ratio of number of food stamp persons over the estimated persons at or below 125% of the poverty level. **State Target: greater than or equal to 59.65%**
Source: SUCCESS DMD6929I, US Census Bureau

Medicaid (ABD) Standard of Promptness

5

Of all the Aged, Blind, Disabled Medicaid applications for benefits, the percentage that was completed within the mandated Standard of Promptness (SOP). **State Target: greater than or equal to 96.0%**
Source: SUCCESS DMF8001I, DMF8007I, DMF8031I, DMF8032I, DMF8061I

Medicaid (Family) Standard of Promptness

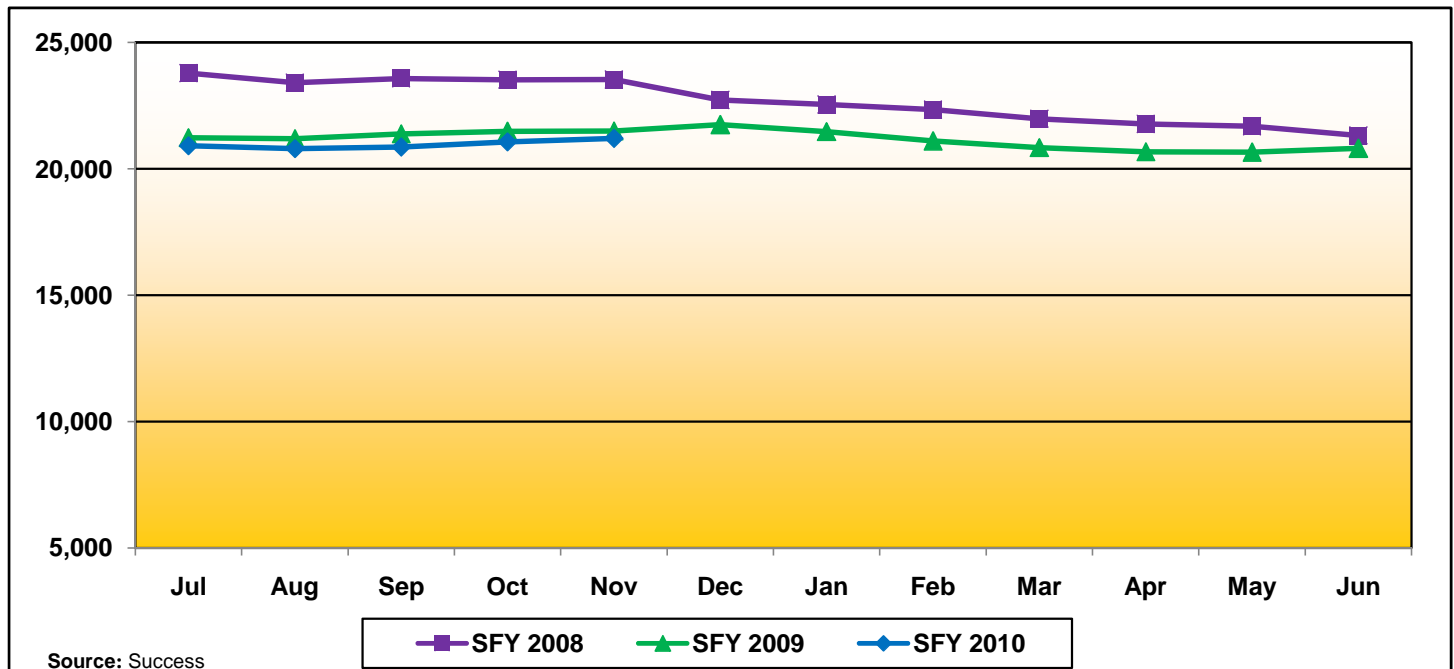
5

Of all the Family Medicaid applications for benefits, the percentage that was completed within the mandated Standard of Promptness (SOP). **State Target: greater than or equal to 96.0%**
Source: SUCCESS DMF8001I, DMF8007I, DMF8031I, DMF8032I, DMF8061I



TANF Cases

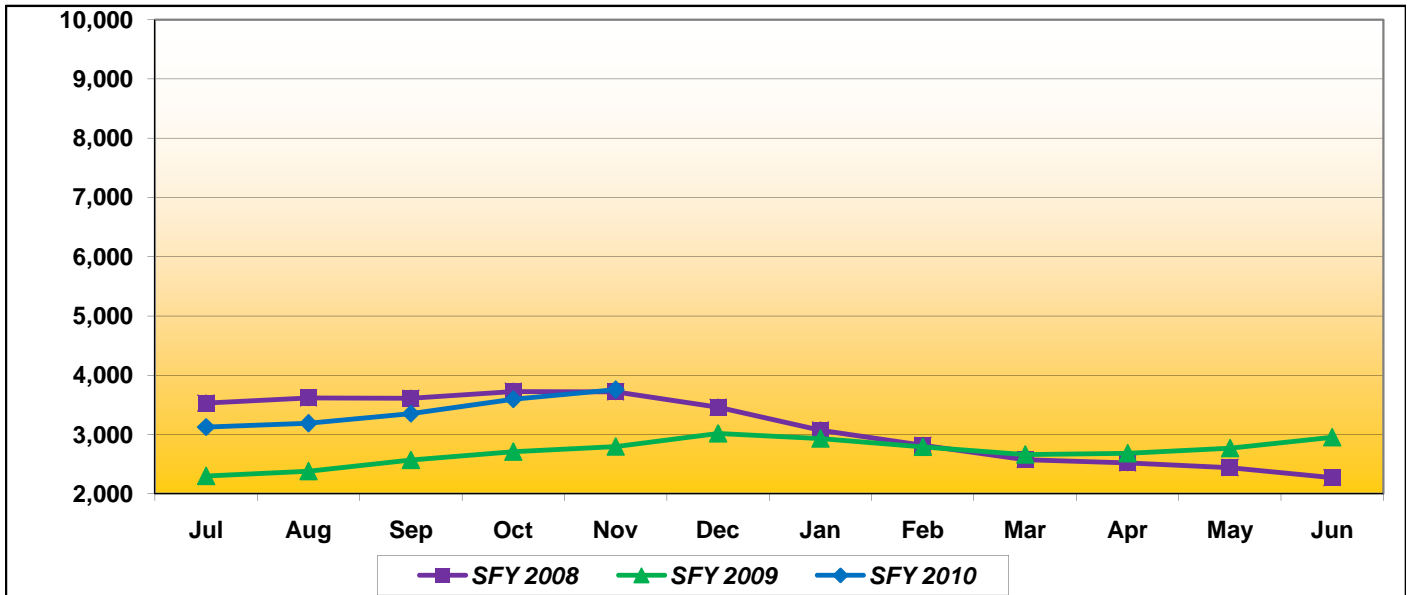
Def: Includes all cases active at some time during the month



| Jul | Aug | Sep | Oct | Nov | Dec | Jan | Feb | Mar | Apr | May | Jun |
|--------|--------|--------|--------|--------|--------|--------|--------|--------|--------|--------|--------|
| 23,778 | 23,410 | 23,574 | 23,521 | 23,525 | 22,719 | 22,538 | 22,336 | 21,977 | 21,768 | 21,678 | 21,318 |
| 21,231 | 21,189 | 21,378 | 21,478 | 21,494 | 21,743 | 21,467 | 21,098 | 20,837 | 20,671 | 20,656 | 20,803 |
| 20,911 | 20,798 | 20,857 | 21,057 | 21,198 | | | | | | | |

TANF Cases - Adult

Def: Adult is defined as a work eligible individual. Includes all cases active at some time during the month.

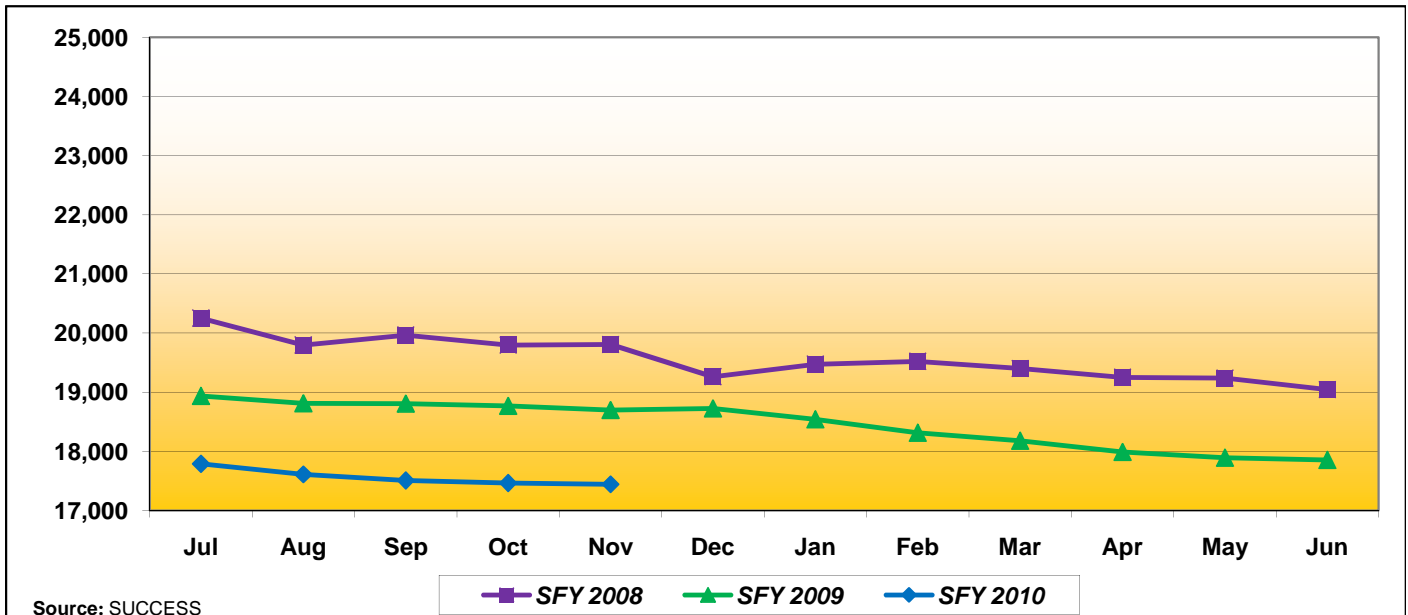


Source: SUCCESS

| Jul | Aug | Sep | Oct | Nov | Dec | Jan | Feb | Mar | Apr | May | Jun |
|-------|-------|-------|-------|-------|-------|-------|-------|-------|-------|-------|-------|
| 3,530 | 3,615 | 3,611 | 3,722 | 3,718 | 3,461 | 3,069 | 2,819 | 2,576 | 2,521 | 2,439 | 2,273 |
| 2,297 | 2,378 | 2,571 | 2,709 | 2,795 | 3,019 | 2,928 | 2,788 | 2,660 | 2,681 | 2,766 | 2,952 |
| 3,126 | 3,188 | 3,352 | 3,596 | 3,755 | | | | | | | |

TANF Cases - Child Only

Def: There is no work eligible adult in the case. Includes all cases active at some time during the month.

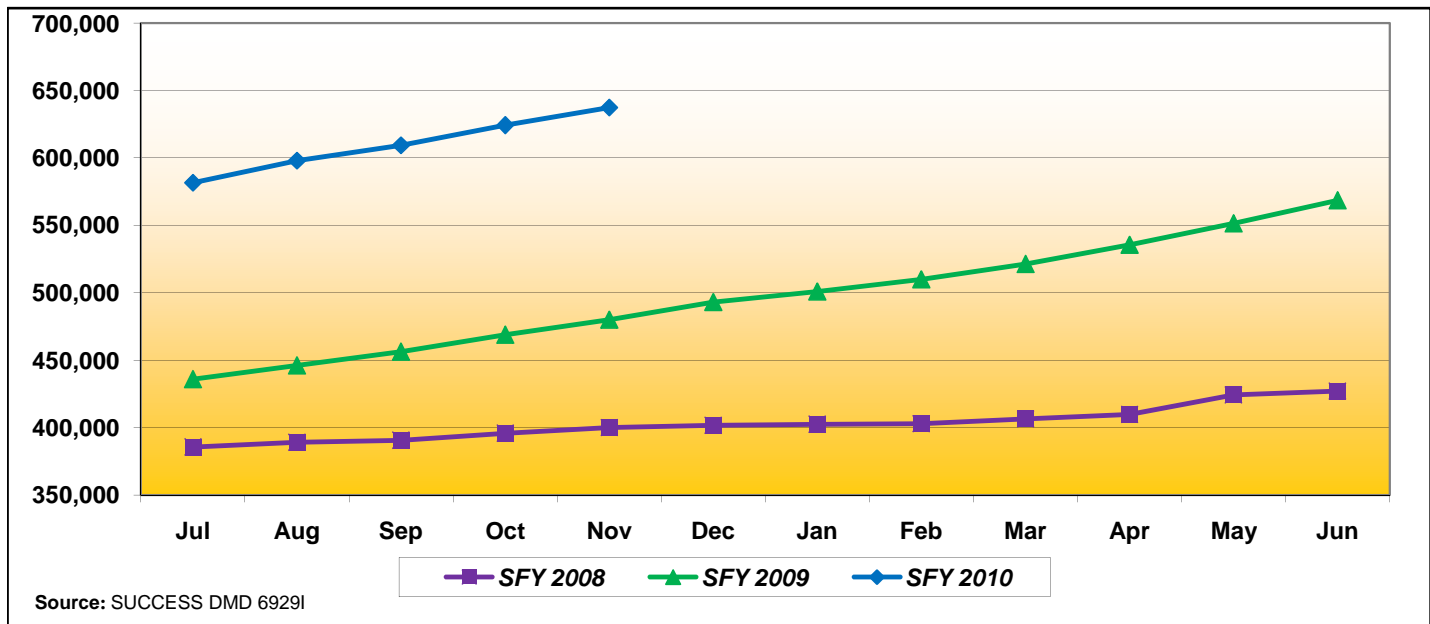


Source: SUCCESS

| Jul | Aug | Sep | Oct | Nov | Dec | Jan | Feb | Mar | Apr | May | Jun |
|--------|--------|--------|--------|--------|--------|--------|--------|--------|--------|--------|--------|
| 20,248 | 19,794 | 19,963 | 19,797 | 19,807 | 19,258 | 19,469 | 19,517 | 19,401 | 19,247 | 19,239 | 19,045 |
| 18,934 | 18,811 | 18,807 | 18,769 | 18,699 | 18,724 | 18,539 | 18,310 | 18,177 | 17,990 | 17,890 | 17,851 |
| 17,785 | 17,610 | 17,505 | 17,461 | 17,443 | | | | | | | |

Food Stamp Cases

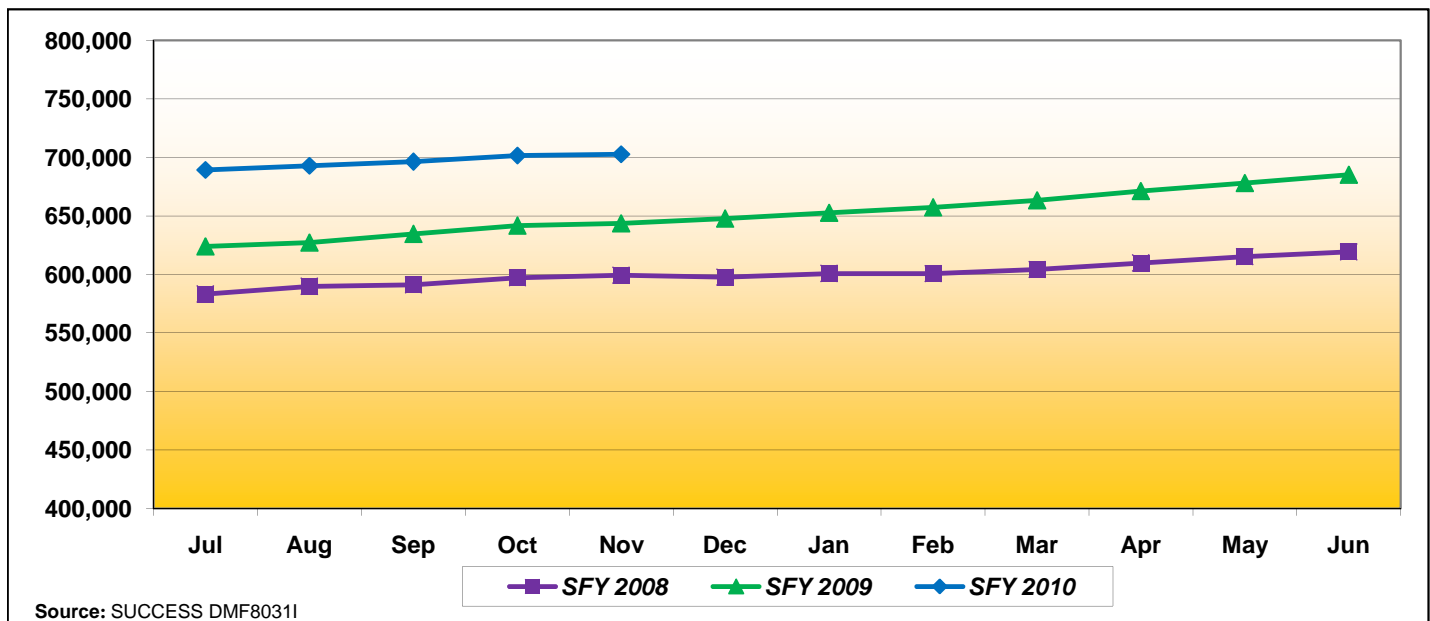
Def: Includes all cases active at some time during the month.



| Jul | Aug | Sep | Oct | Nov | Dec | Jan | Feb | Mar | Apr | May | Jun |
|---------|---------|---------|---------|---------|---------|---------|---------|---------|---------|---------|---------|
| 385,577 | 389,220 | 390,538 | 395,695 | 400,169 | 401,851 | 402,330 | 403,021 | 406,577 | 409,839 | 424,362 | 427,150 |
| 435,804 | 446,050 | 456,274 | 468,848 | 480,103 | 493,228 | 500,954 | 509,986 | 521,253 | 535,605 | 551,498 | 568,542 |
| 581,710 | 598,126 | 609,475 | 624,308 | 637,514 | | | | | | | |

Medicaid Cases

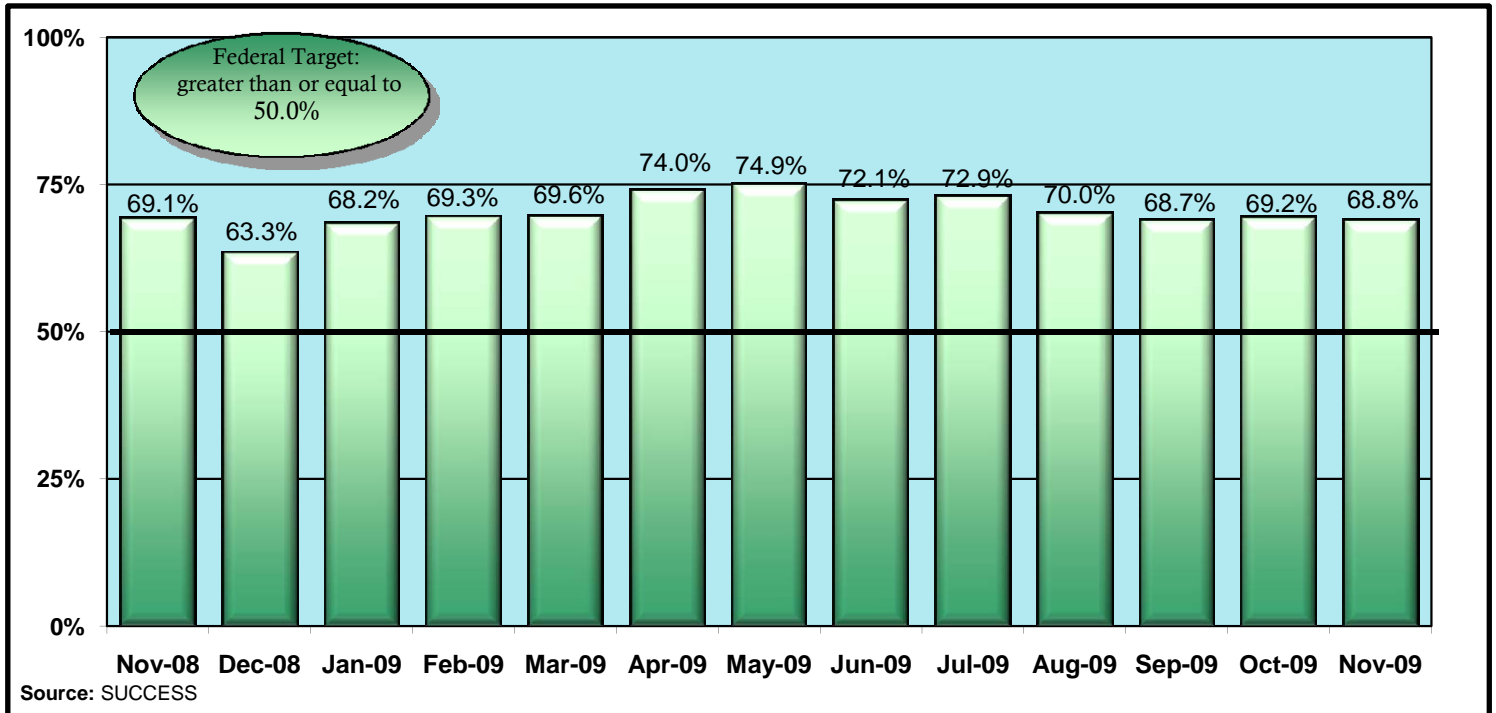
Def: Includes case active at the end of the month.



| Jul | Aug | Sep | Oct | Nov | Dec | Jan | Feb | Mar | Apr | May | Jun |
|---------|---------|---------|---------|---------|---------|---------|---------|---------|---------|---------|---------|
| 583,218 | 589,831 | 591,259 | 597,221 | 599,518 | 597,777 | 600,739 | 600,890 | 604,355 | 609,750 | 615,327 | 619,436 |
| 624,150 | 627,369 | 634,654 | 641,789 | 643,827 | 647,760 | 652,838 | 657,302 | 663,485 | 671,324 | 678,214 | 685,321 |
| 689,390 | 693,057 | 696,432 | 701,695 | 702,853 | | | | | | | |

TANF Work Participation Rate

Def: Of all the families with a TANF work requirement, the percentage of families that met the work requirement.

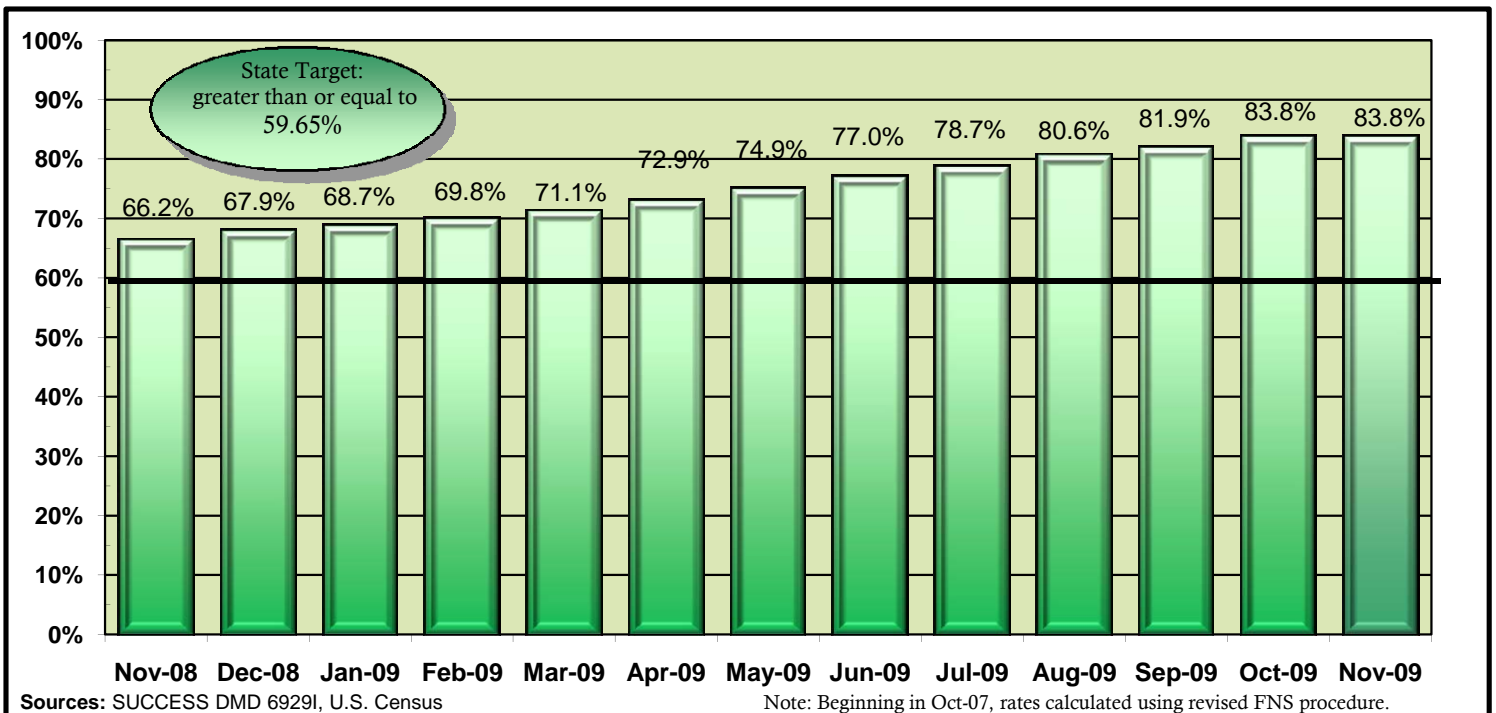


| Nov-08 | Dec-08 | Jan-09 | Feb-09 | Mar-09 | Apr-09 | May-09 | Jun-09 | Jul-09 | Aug-09 | Sep-09 | Oct-09 | Nov-09 |
|--------|--------|--------|--------|--------|--------|--------|--------|--------|--------|--------|--------|--------|
| 69.1% | 63.3% | 68.2% | 69.3% | 69.6% | 74.0% | 74.9% | 72.1% | 72.9% | 70.0% | 68.7% | 69.2% | 68.8% |

Note: State Target is greater than or equal to 70%.

Food Stamp Participation Rate

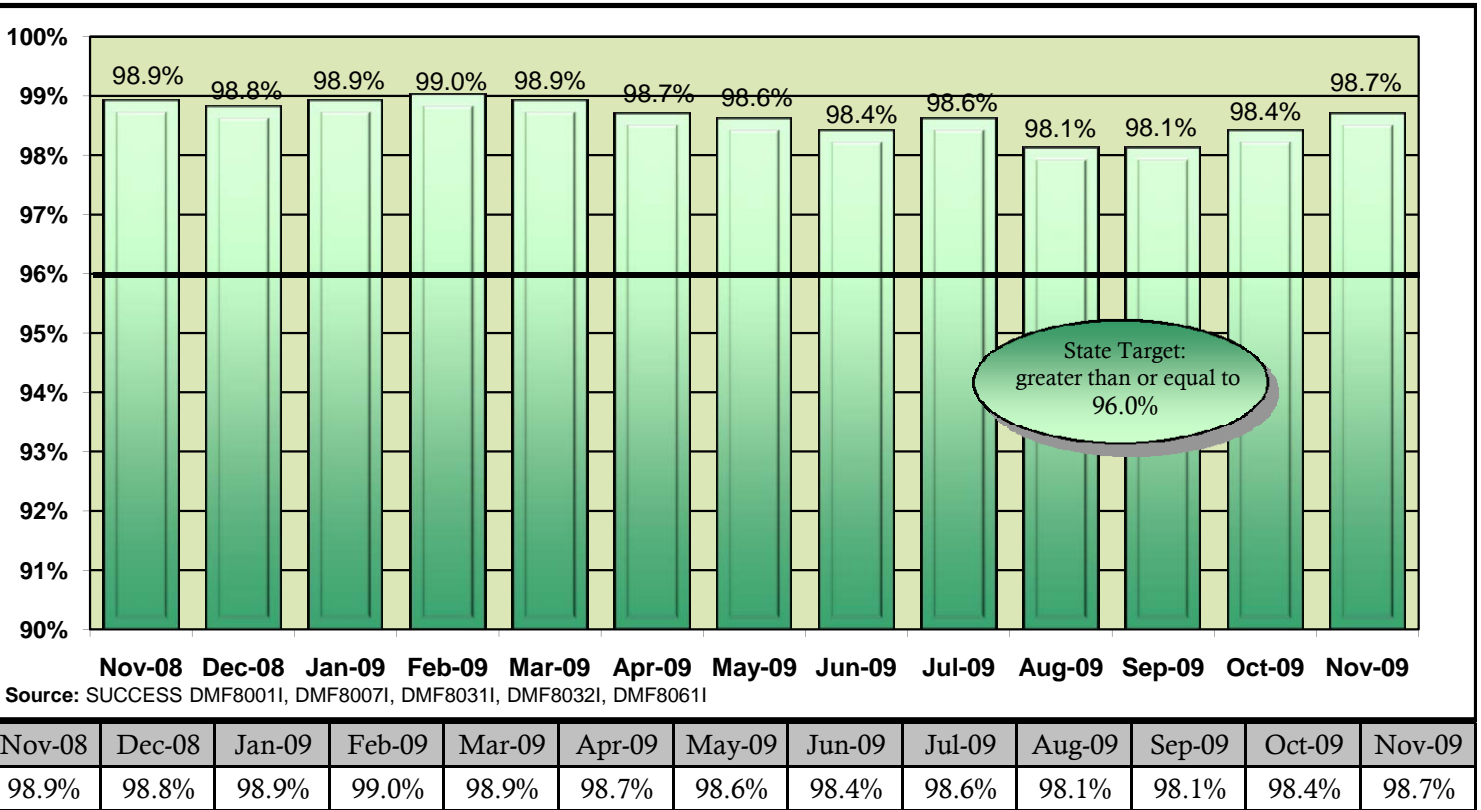
Def: The ratio of number of food stamp persons over the estimated persons at or below 125% of the Poverty level.



| Nov-08 | Dec-08 | Jan-09 | Feb-09 | Mar-09 | Apr-09 | May-09 | Jun-09 | Jul-09 | Aug-09 | Sep-09 | Oct-09 | Nov-09 |
|--------|--------|--------|--------|--------|--------|--------|--------|--------|--------|--------|--------|--------|
| 66.2% | 67.9% | 68.7% | 69.8% | 71.1% | 72.9% | 74.9% | 77.0% | 78.7% | 80.6% | 81.9% | 83.8% | 83.8% |

Medicaid (ABD) SOP

Def: Of all the Aged, Blind, Disabled Medicaid applications for benefits, the percentage that was completed within the mandated Standard of Promptness (SOP).



Medicaid (Family) SOP

Def: Of all the Family Medicaid applications for benefits, the percentage that was completed within the mandated Standard of Promptness (SOP).

