

Georgia Division of Family & Children Services

Bobby D. Cagle, Director

Office of Family Independence Outcome Measures & Results Report October 2016

(Reflects data as of September 30, 2016)



Division of Family & Children Services

Definitions and Data Sources

Outcome I: Number of Children Served

Number of children receiving subsidized childcare in the reporting month.

Sources: MAXSTAR – Active Caseload Report I, Federal ACF-801 Data Submission Summary Data Assessment Report

Outcome II: Total Number of Childcare Applications Received

Total number of Compass Referrals and Non-Compass Referrals applications received in the reporting month

Sources: MAXSTAR – Active Caseload Report – Compass Referrals, MAXSTAR – Active Caseload Report – Non-Compass Referrals

Note: *Common Point of Access to Social Services (COMPASS)* is online application where an individual can apply for public assistance benefits in Georgia. *Non-COMPASS* is an individual can apply for public assistance benefits at a local Georgia Division of Family and Children Services (DFCS) office.

Outcome III: Total Number of TANF Recipients

Total number of adult and child-only cases active at some time during month.

Source: SUCCESS FINAL TANF

Outcome IV: TANF Cases – Adult

Adult is defined as a work eligible individual. All cases active at some time during the month.

Source: SUCCESS FINAL TANF

Outcome V: TANF Cases – Child-Only

There is no work eligible adult in the case. All cases active at some time during the month.

Source: SUCCESS FINAL TANF

Outcome VI: Food Stamp Cases

Number of food stamp cases at or below 125% of poverty level. All cases active at some time during the month.

Source: SUCCESS DMD6929I Food Stamp Participation Report



Definitions and Data Sources

Outcome VII: Medicaid Cases

Total number of Family Medicaid and Aged Blind Disabled (ABD) Medicaid cases active at the end of the month.

Source: SUCCESS DMF80311 AU Load Activity Report

Outcome VIII: TANF Work Participation Rate

Of all the families with a Temporary Assistance to Needy Families (TANF) work requirement, the percentage of families that met work requirement. **Federal Target: greater than or equal to 50%**

Source: SUCCESSION FINAL TANF

Outcome IX: Food Stamp Participation Rate

The ratio of food stamp participants over the estimated participants at or below 125% of the poverty level.

State Target: 59.65%

Source: SUCCESS DMD69291 Food Stamp Participation Report and U.S. Census Bureau 2012 American Community Survey 5-year Estimates Data

Outcome X: Medicaid (ABD) Standard of Promptness

Of all the Aged, Blind, Disabled Medicaid applications for benefits, the percentage that was completed within the mandated Standard of Promptness (SOP). The percentage is calculated by $1 - (\text{NETOSOP} / (\text{Total Applications Received} + \text{Pending End of Month}))$ **State Target: greater than or equal to 96.0%**

Source: SUCCESS DMF80011 Application Activity Report, DMF80071 Review Activity Report, DMF80311 AU Load Activity Report, DMF80321 Case Maintenance Report, DMF80611 Monthly Application SOP Report

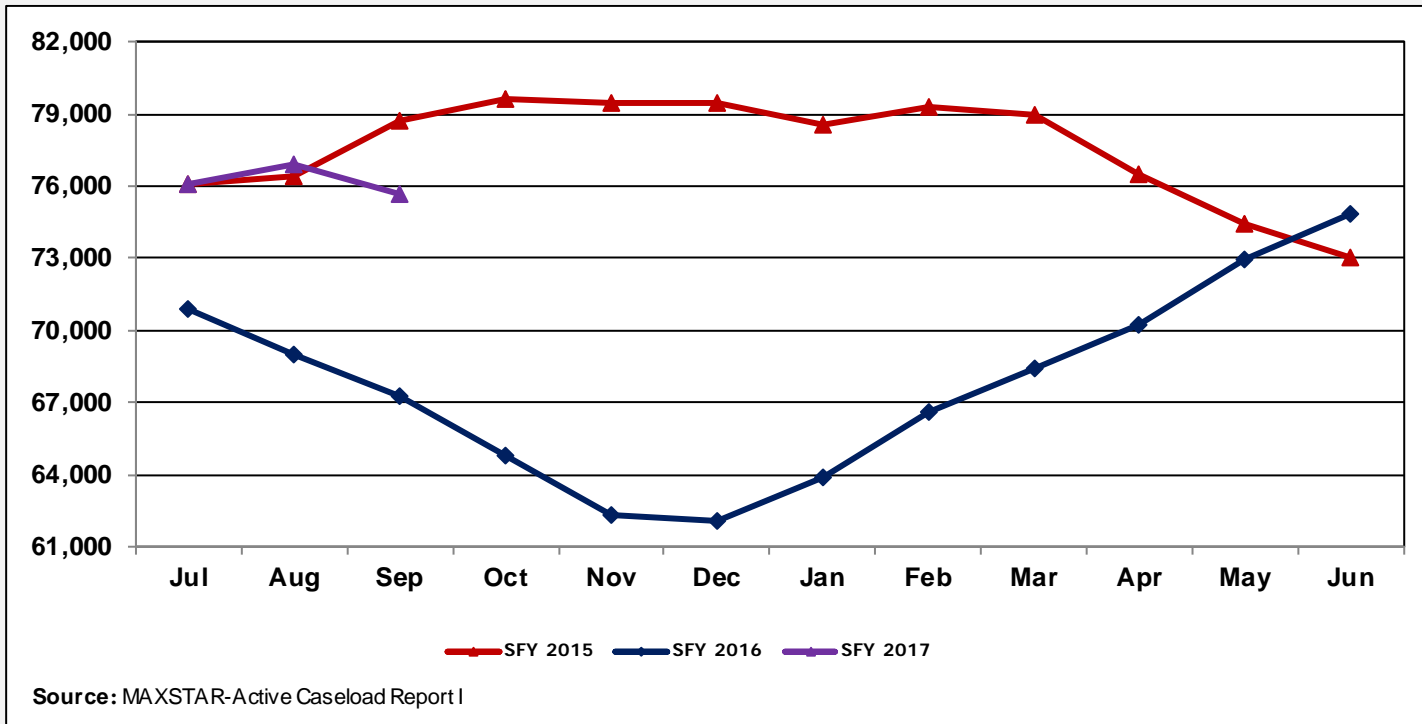
Outcome XI: Medicaid (Family) Standard of Promptness

Of all the Family Medicaid applications for benefits, the percentage that was completed within the mandated Standard of Promptness (SOP). The percentage is calculated by $1 - (\text{NETOSOP} / (\text{Total Applications Received} + \text{Pending End of Month}))$ **State Target: greater than or equal to 96.0%**

Source: SUCCESS DMF80011 Application Activity Report, DMF80071 Review Activity Report, DMF80311 AU Load Activity Report, DMF80321 Case Maintenance Report, DMF80611 Monthly Application SOP Report



Outcome I: Number of Children Served

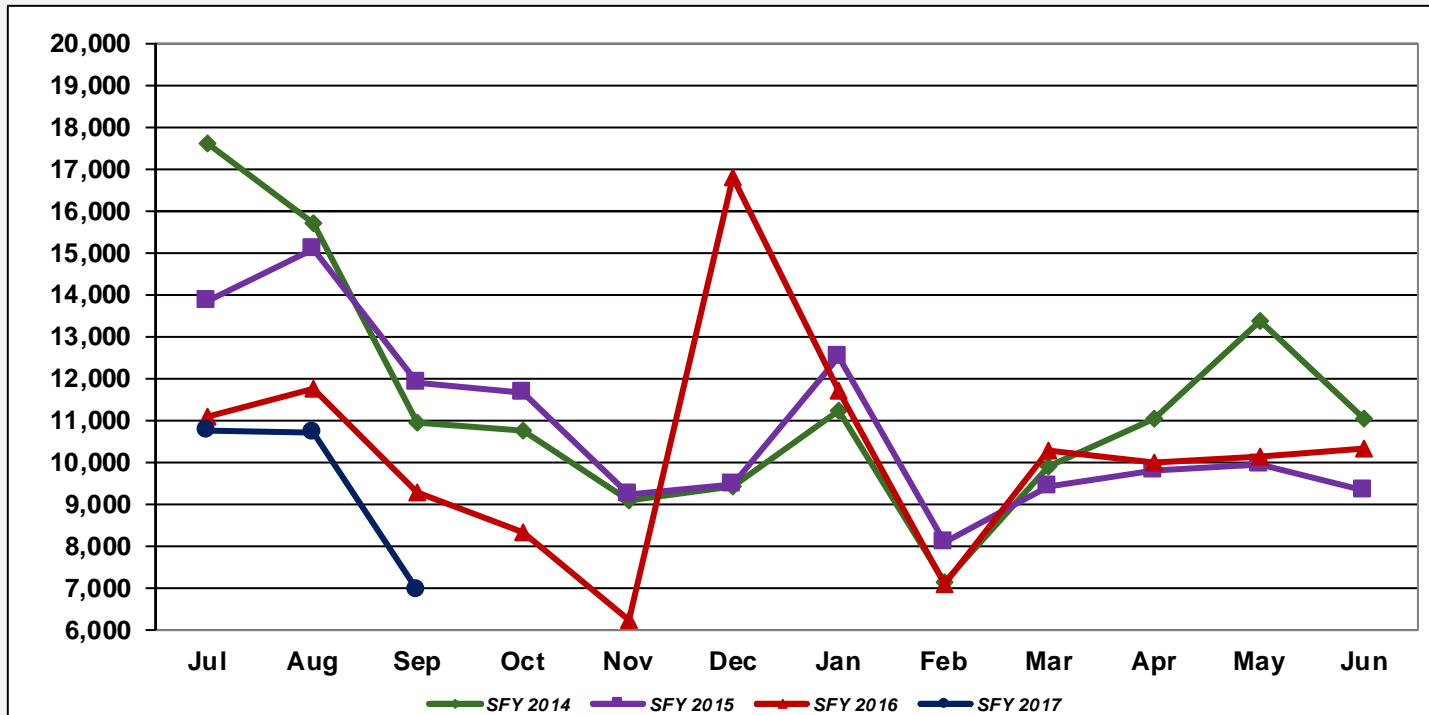


Jul	Aug	Sep	Oct	Nov	Dec	Jan	Feb	Mar	Apr	May	Jun
76,107	76,416	78,729	79,616	79,492	79,434	78,517	79,285	78,935	76,523	74,467	73,014
70,928	68,973	67,270	64,825	62,348	62,103	63,904	66,603	68,395	70,233	72,919	74,833
76,067	76,911	75,652									

Note: Active Caseload Report I is the interim number based on children receiving subsidized childcare during the month.



Outcome II: Total Number of Childcare Applications Received

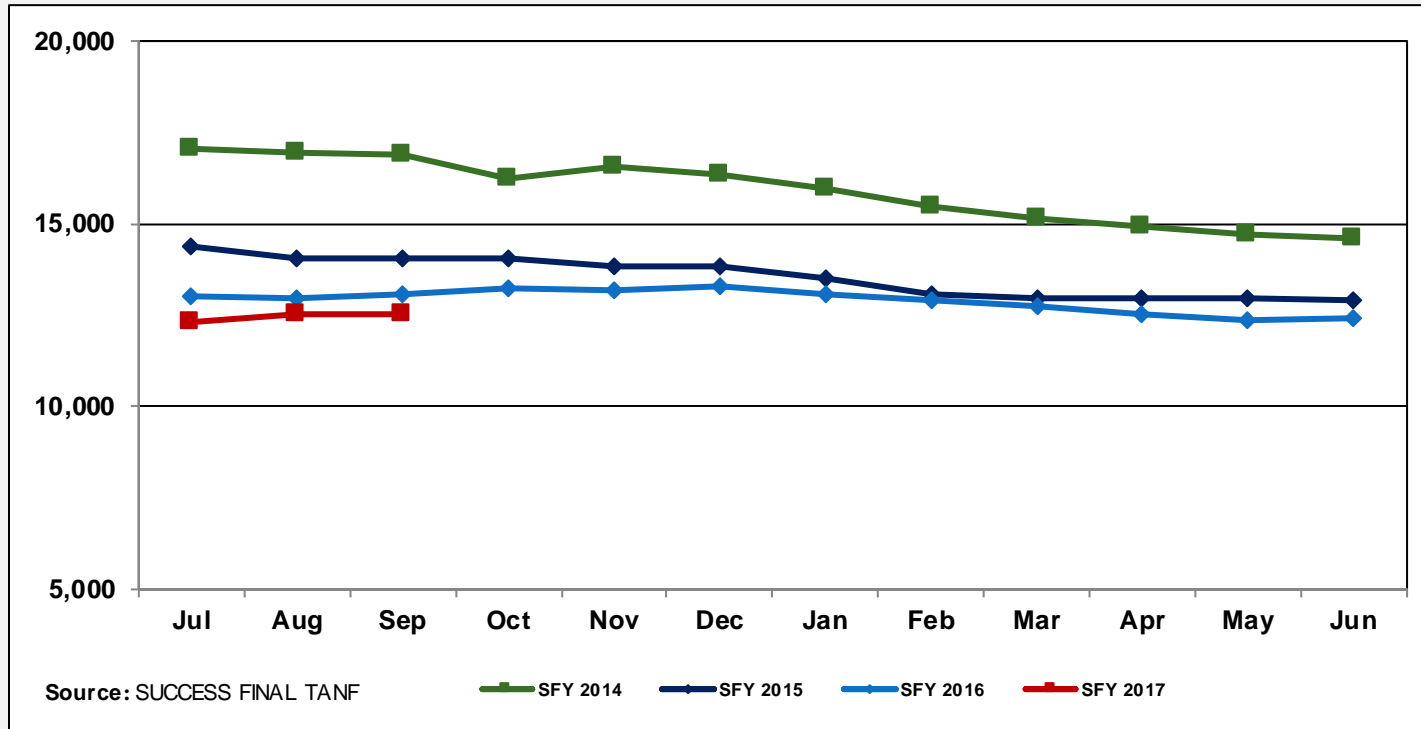


Source: MAXSTAR - Active Caseload Report-Compass Referrals, MAXSTAR-Active Caseload Report - Non-Compass Referrals

Jul	Aug	Sep	Oct	Nov	Dec	Jan	Feb	Mar	Apr	May	Jun
17,606	15,703	10,961	10,750	9,121	9,435	11,259	7,131	9,912	11,048	13,384	11,058
13,858	15,079	11,893	11,687	9,225	9,489	12,547	8,126	9,413	9,800	9,963	9,361
11,077	11,790	9,303	8,336	6,265	16,800	11,699	7,100	10,290	9,993	10,136	10,316
10,754	10,697	6,960									



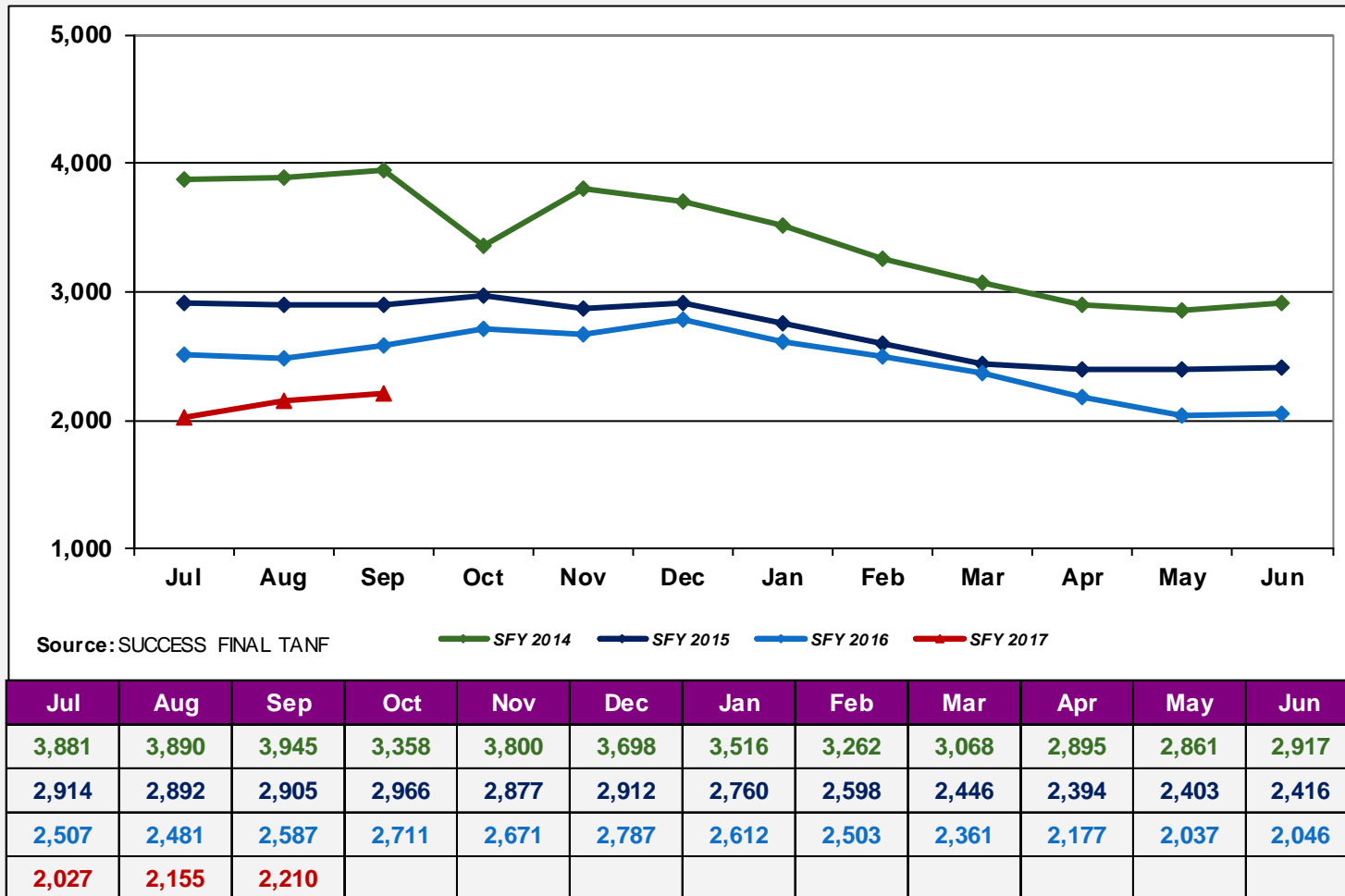
Outcome III: Total Number of TANF Recipients



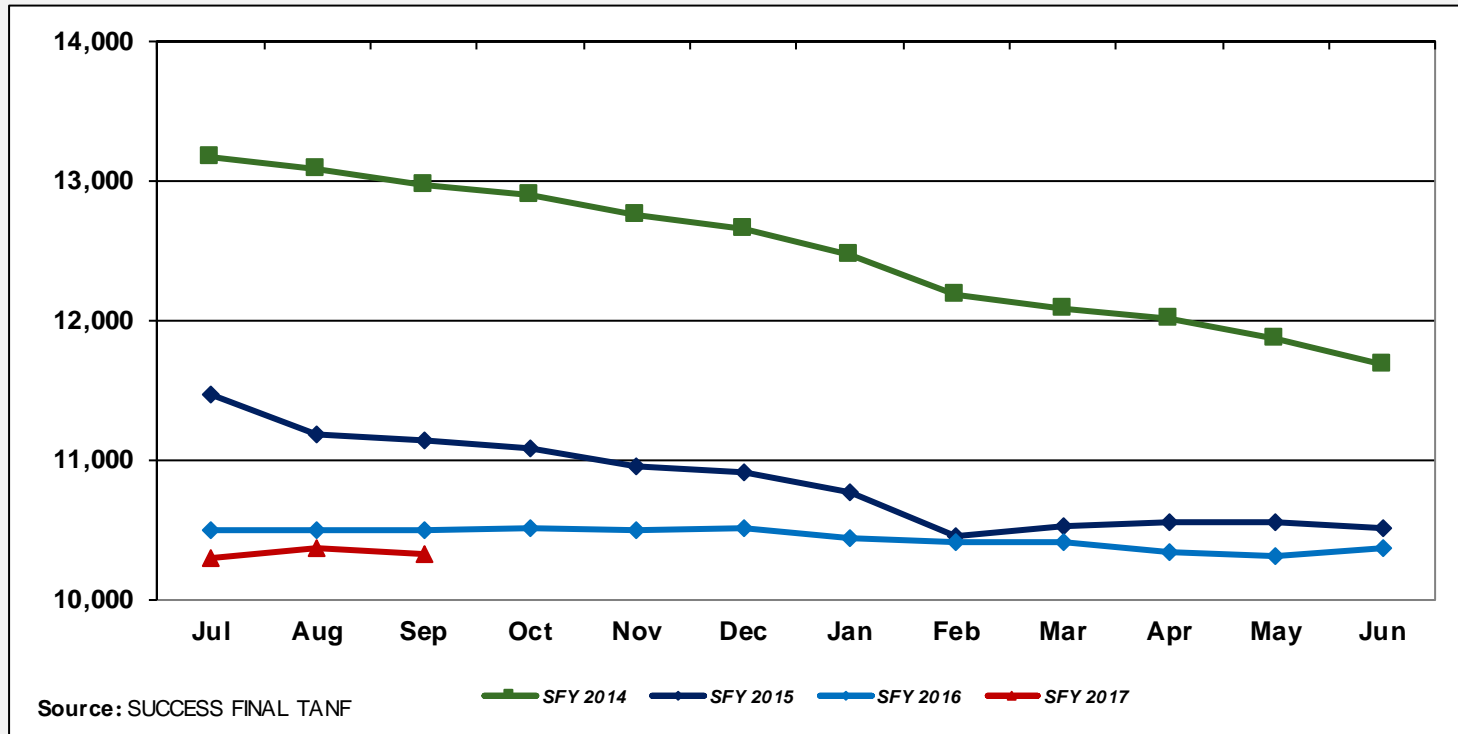
Jul	Aug	Sep	Oct	Nov	Dec	Jan	Feb	Mar	Apr	May	Jun
17,057	16,970	16,913	16,251	16,557	16,353	15,992	15,452	15,154	14,915	14,729	14,600
14,383	14,074	14,052	14,056	13,829	13,820	13,526	13,051	12,974	12,955	12,952	12,924
13,011	12,976	13,085	13,222	13,165	13,293	13,050	12,913	12,770	12,519	12,345	12,408
12,321	12,520	12,531									



Outcome IV: TANF Cases – Adult



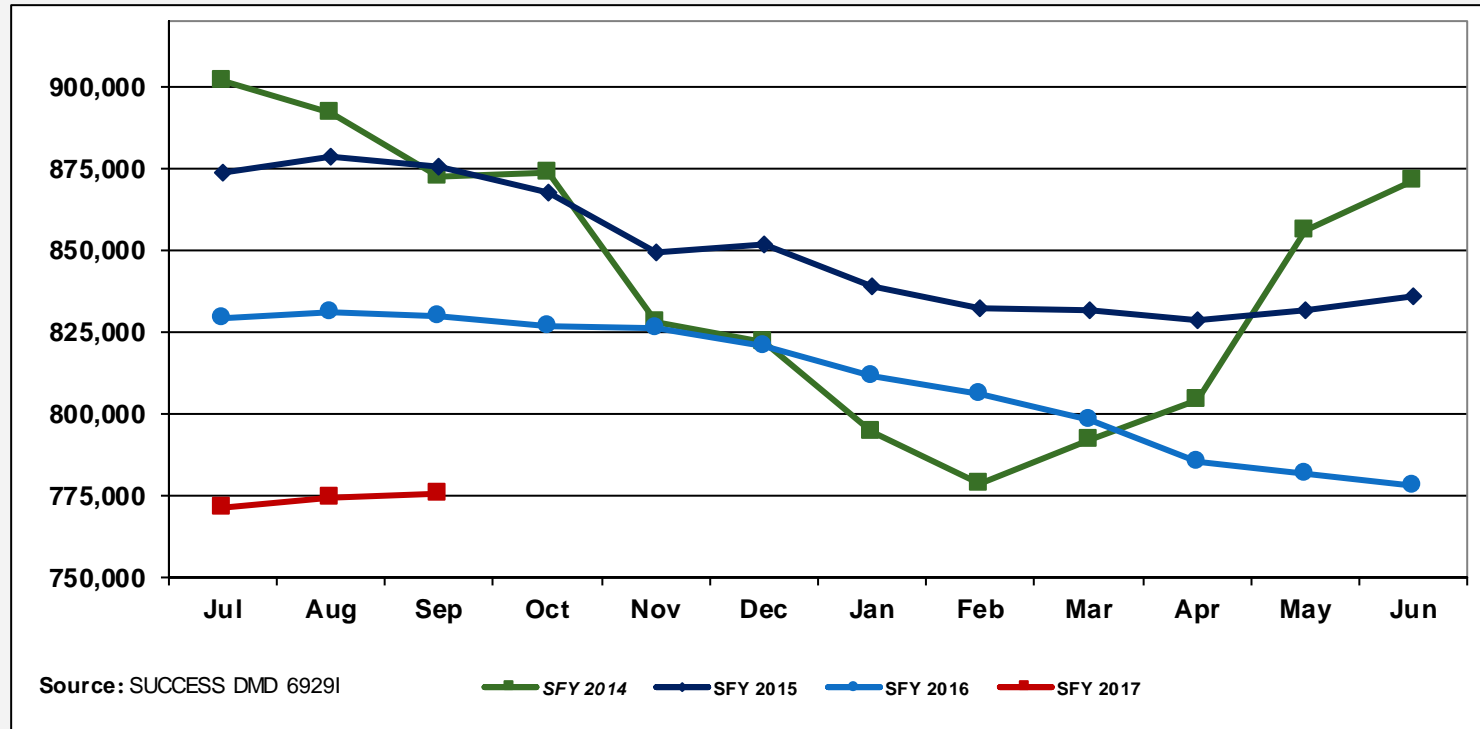
Outcome V: TANF Cases – Child-Only



Jul	Aug	Sep	Oct	Nov	Dec	Jan	Feb	Mar	Apr	May	Jun
13,176	13,080	12,968	12,893	12,757	12,655	12,476	12,190	12,086	12,020	11,868	11,683
11,469	11,182	11,147	11,090	10,952	10,908	10,766	10,453	10,528	10,561	10,549	10,508
10,504	10,495	10,498	10,511	10,494	10,506	10,438	10,410	10,409	10,342	10,308	10,362
10,294	10,365	10,321									



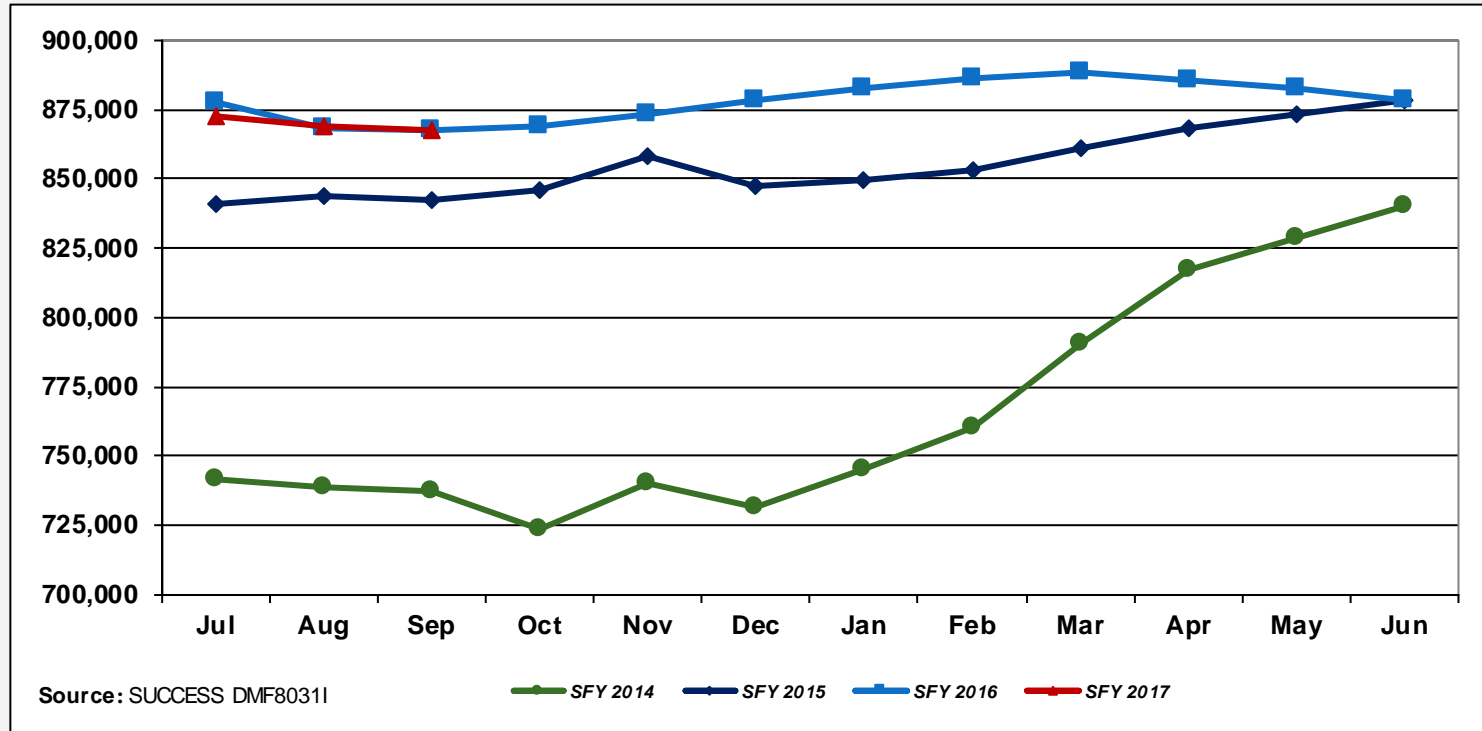
Outcome VI: Food Stamp Cases



Jul	Aug	Sep	Oct	Nov	Dec	Jan	Feb	Mar	Apr	May	Jun
901,963	892,156	872,518	874,110	828,293	822,027	794,600	778,913	792,133	804,798	856,465	871,803
874,132	878,554	875,992	868,027	849,830	852,279	838,949	832,518	832,014	828,707	831,818	836,051
829,252	831,209	830,375	826,889	826,196	821,182	811,941	806,306	798,628	785,736	781,834	778,478
771,834	774,861	775,850									



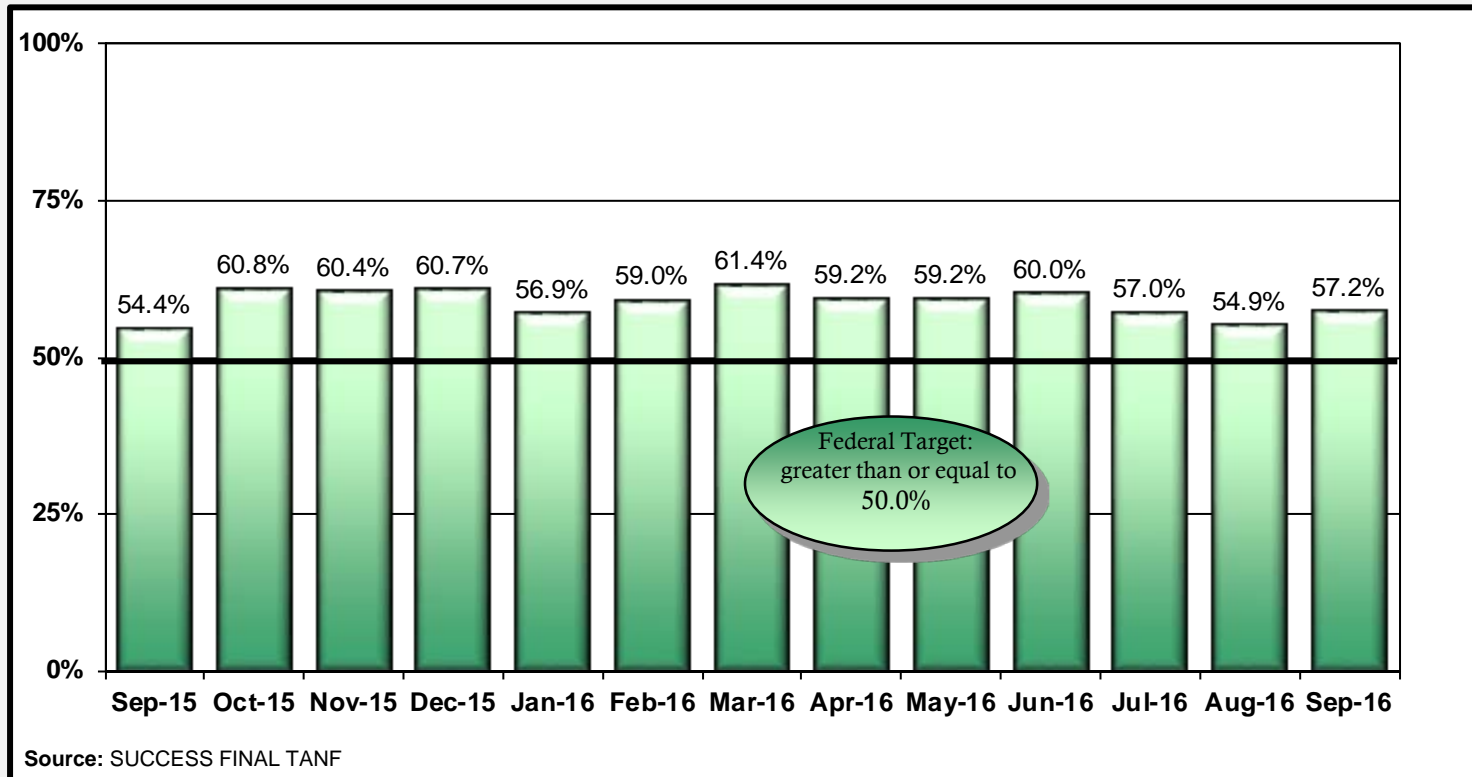
Outcome VII: Medicaid Cases



Jul	Aug	Sep	Oct	Nov	Dec	Jan	Feb	Mar	Apr	May	Jun
741,543	738,468	737,583	723,489	740,106	731,209	745,040	760,199	790,866	816,889	828,937	840,127
841,054	843,904	842,498	846,225	858,497	847,540	849,400	853,387	860,826	868,006	873,268	878,738
877,570	868,025	867,666	869,318	873,748	878,164	882,635	886,025	888,758	885,987	883,112	878,132
872,880	869,278	867,938									



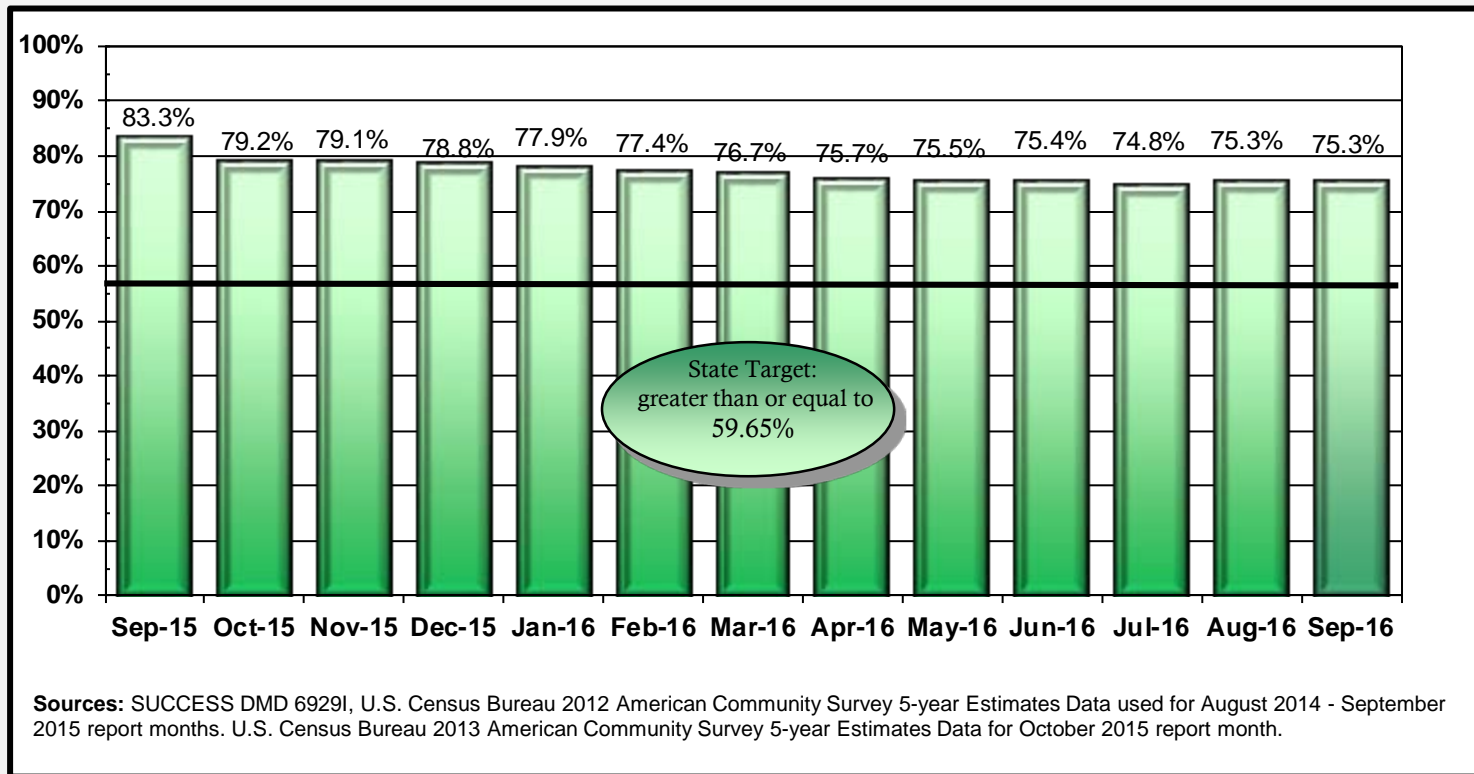
Outcome VIII: TANF Work Participation Rate



Sep-15	Oct-15	Nov-15	Dec-15	Jan-16	Feb-16	Mar-16	Apr-16	May-16	Jun-16	Jul-16	Aug-16	Sep-16
54.4%	60.8%	60.4%	60.7%	56.9%	59.0%	61.4%	59.2%	59.2%	60.0%	57.0%	54.9%	57.2%



Outcome IX: Food Stamp Participation Rate

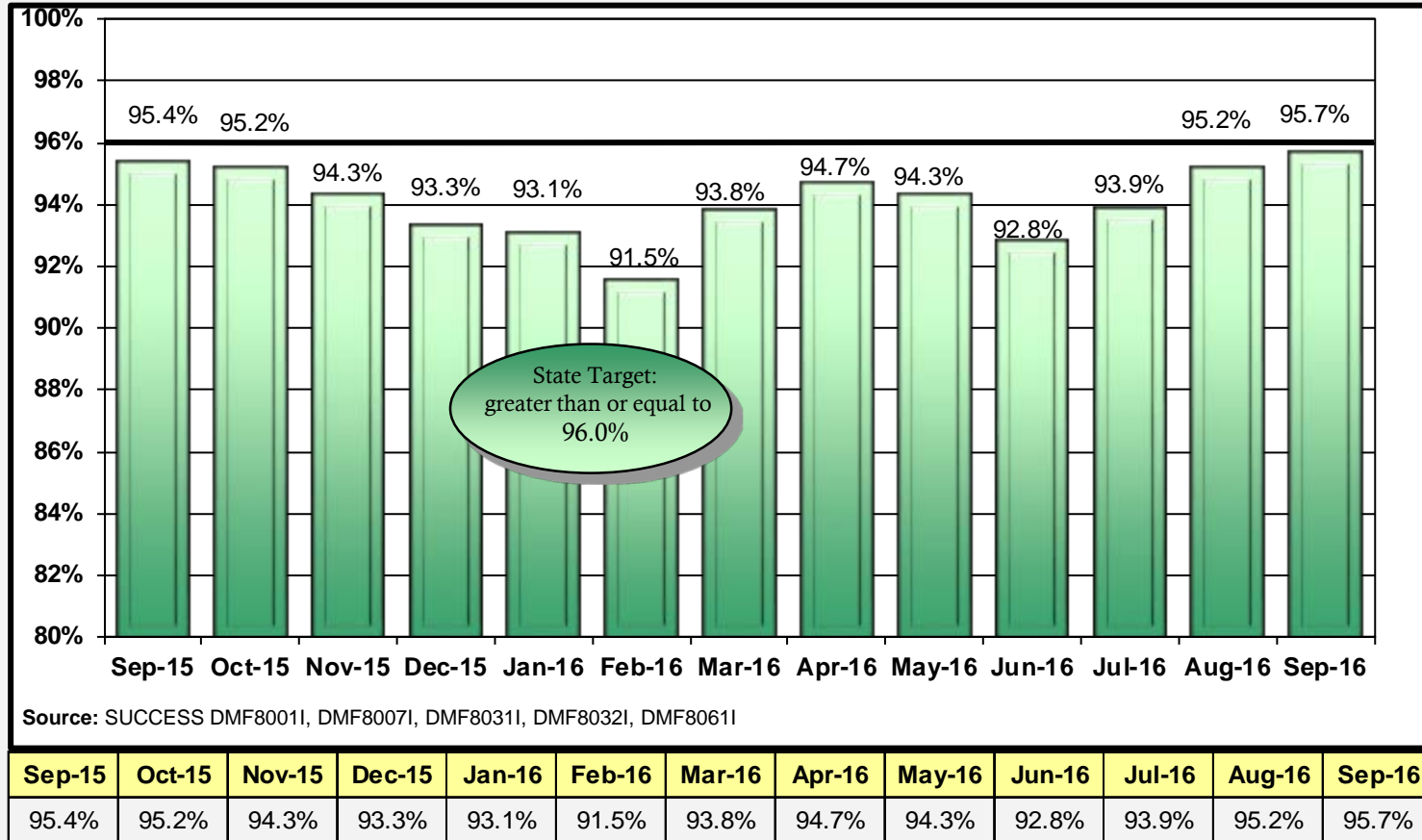


Sources: SUCCESS DMD 6929I, U.S. Census Bureau 2012 American Community Survey 5-year Estimates Data used for August 2014 - September 2015 report months. U.S. Census Bureau 2013 American Community Survey 5-year Estimates Data for October 2015 report month.

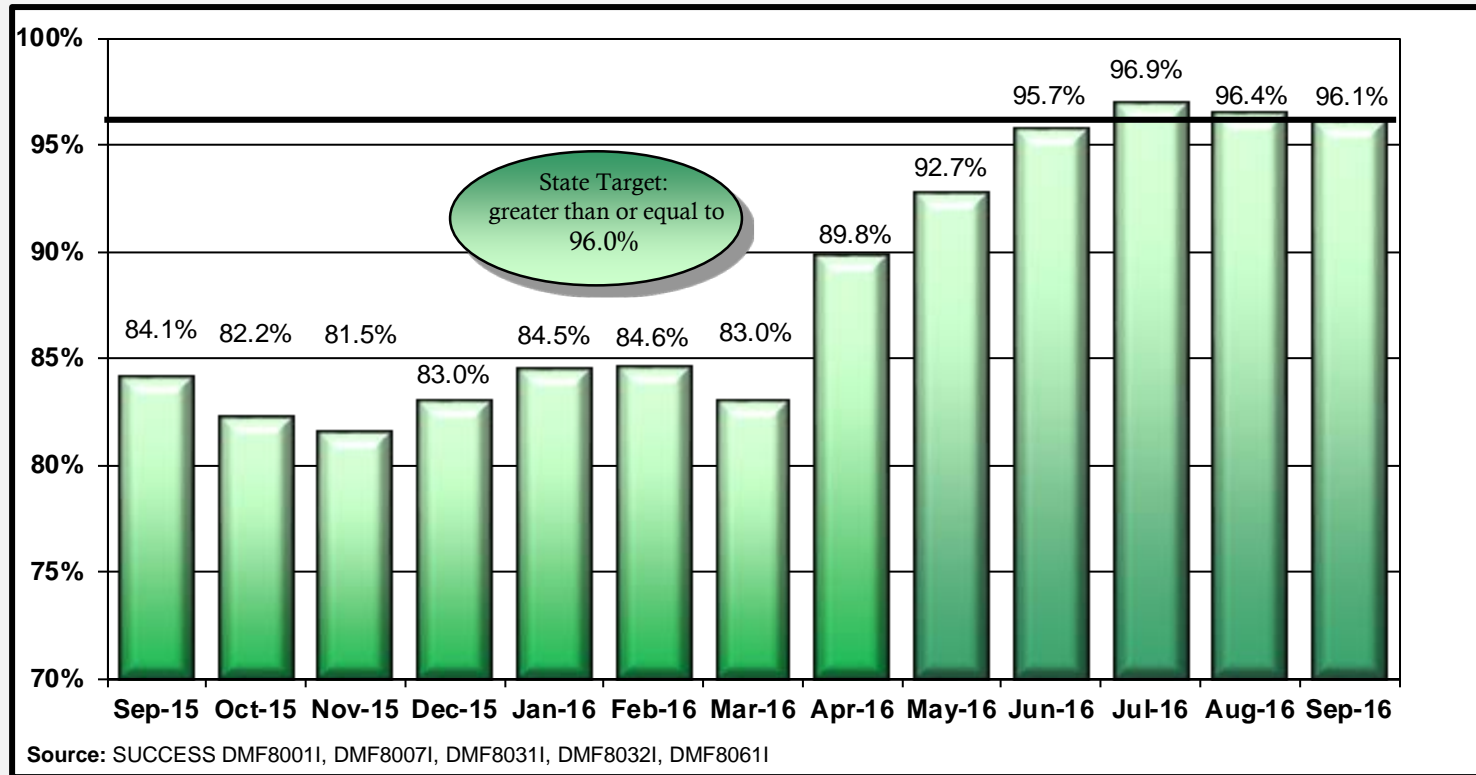
Sep-15	Oct-15	Nov-15	Dec-15	Jan-16	Feb-16	Mar-16	Apr-16	May-16	Jun-16	Jul-16	Aug-16	Sep-16
83.3%	79.2%	79.1%	78.8%	77.9%	77.4%	76.7%	75.7%	75.5%	75.4%	74.8%	75.3%	75.3%



Outcome X: Medicaid (ABD) Standard of Promptness



Outcome XI: Medicaid (Family) Standard of Promptness



Sep-15	Oct-15	Nov-15	Dec-15	Jan-16	Feb-16	Mar-16	Apr-16	May-16	Jun-16	Jul-16	Aug-16	Sep-16
84.1%	82.2%	81.5%	83.0%	84.5%	84.6%	83.0%	89.8%	92.7%	95.7%	96.9%	96.4%	96.1%

