



Georgia Division of Family and Children Services

Director

Bobby D. Cagle

Monthly Measures and Results for August 2015*

*(Reflects Safety Outcomes as of June 30, 2015 And
Permanency Outcomes as of July 31, 2015)

With Appendices



Division of Family and Children Services

Table of Contents

- Part I: Definitions And Data Sources contained in Report**
- Part II: Safety Outcomes**
- Part III: Permanency/Well-being Outcomes**
- Part IV: Appendices**
 - A. Disposition of Investigations by Percentage**
 - B. Regional Charts of Outcome V (Children in the Legal Custody of DFCS Under the Age of 18)**



Definitions and Data Sources

SAFETY: Children are first and foremost, protected from abuse and neglect.

Outcome I: Child Protective Services Cases

Count of unique CPS Investigations and Family Preservation (Ongoing) stages open at any point during the month. Includes all cases active at some time during the month. Outcome is calculated 45 days prior to the date of report.

Outcome 1A: Family Support Cases Only: Count of unique Family Support stages open at any point during the month.

Outcome 1B: Investigation Cases Only: Count of unique Investigation stages open at any point during the month.

Outcome 1C: Family Preservation Cases Only: Count of unique Family Preservation stages open at any point during the month.

Sources: SHINES

Outcome II: Recurrence of Substantiated Child Maltreatment

Of all the children who were victims of substantiated maltreatment in the first 6 months of the year, the percentage that had substantiated maltreatment within the following 6 months. Outcome is calculated 45 days prior to the date of report. Each month is calculated as a rolling calendar year. *National Standard: less than or equal to 5.40%*

Source: SHINES

Outcome III: Disposition of Child Abuse and Neglect Reports

Chart reflects the disposition of reports received in a particular month. Data includes count of Family Support, Substantiated Investigations, Unsubstantiated Investigations and Screen-outs. Outcome is calculated 45 days prior to the date of report.

Source: SHINES

Outcome IV: Subsequent Case-type of Investigations by Disposition

Chart reflects the disposition of investigations received in a particular month by the subsequent case type. Data includes count of Family Preservation (Substantiated and Unsubstantiated Open), Foster Care (Substantiated and Unsubstantiated Open), Substantiated and Unsubstantiated Closed. Outcome is calculated 45 days prior to the date of report.

Source: SHINES



Division of Family and Children Services

Definitions and Data Sources

PERMANENCY: Children have permanency and stability in their living situations.

Outcome V: Number of Child Placement Services Cases

Count of unique children who were involved in an open Foster Care or Adoption stage during the month. In placement services each child who is the principal (PC) is considered a case.

Source: SHINES

Outcome VI: Children in the Legal Custody of DFCS Under the Age of 18

Count of unique children who were in the legal custody of DFCS (17 years of age and under) at some point during the month, and those 18 years of age and older (Extended Youth Services). Excludes Aftercare, ICPC, Placement services to parents, and Boarding County.

Source: SHINES

Outcome VI - A: Children in the Legal Custody of DFCS Under the Age of 18 (Regional)

Count of unique children who were in the legal custody of DFCS (17 years of age and under) at some point during the month, and those 18 years of age and older (Extended Youth Services). Excludes Aftercare, ICPC, Placement services to parents, and Boarding County.

Source: SHINES

Outcome VII: Comparison of Foster Care Entries & Exits

Number of children who have entered foster care and number of children who have exited foster care during the month. Total children at end of month show the number of children on the last day of the month.

Source: SHINES

Outcome VIII: Foster Care Re-entries

Of all the children who entered foster care, the percentage that were discharged from a prior episode of foster care within 12 months of the current foster care placement. National Standard: less than or equal to 8.60%.

Source: SHINES

Outcome IX: Foster Care Length of Stay

Percentage of children by number of months in foster care during each month.

Source: SHINES



Definitions and Data Sources

PERMANENCY cont'd: Children have permanency and stability in their living situations.

Outcome X: Length of Time to Achieve Reunification

Percentage of children who exited care during the month through reunification with their family that reunified in less than 12 months from the date of their removal. National Standard: greater than or equal to 76.20%

Source: SHINES

Outcome XI: Children Placed with Relatives

Of all children in DFCS custody, the percentage that are placed with a relative or a relative foster home.

State Target: greater than or equal to 30.00%

Source: SHINES

Outcome XII: Extended Youth Services

Number of children ages 18 – 21 who remained in the custody of DFCS beyond their birth month.

Source: SHINES

Outcome XIII: Adoptions Finalized

The number of children whose adoption was finalized within each month..

Source: SHINES

Outcome XIV: Stability Performance Coefficient (Number of Moves/Number of Days in Custody * 1000)

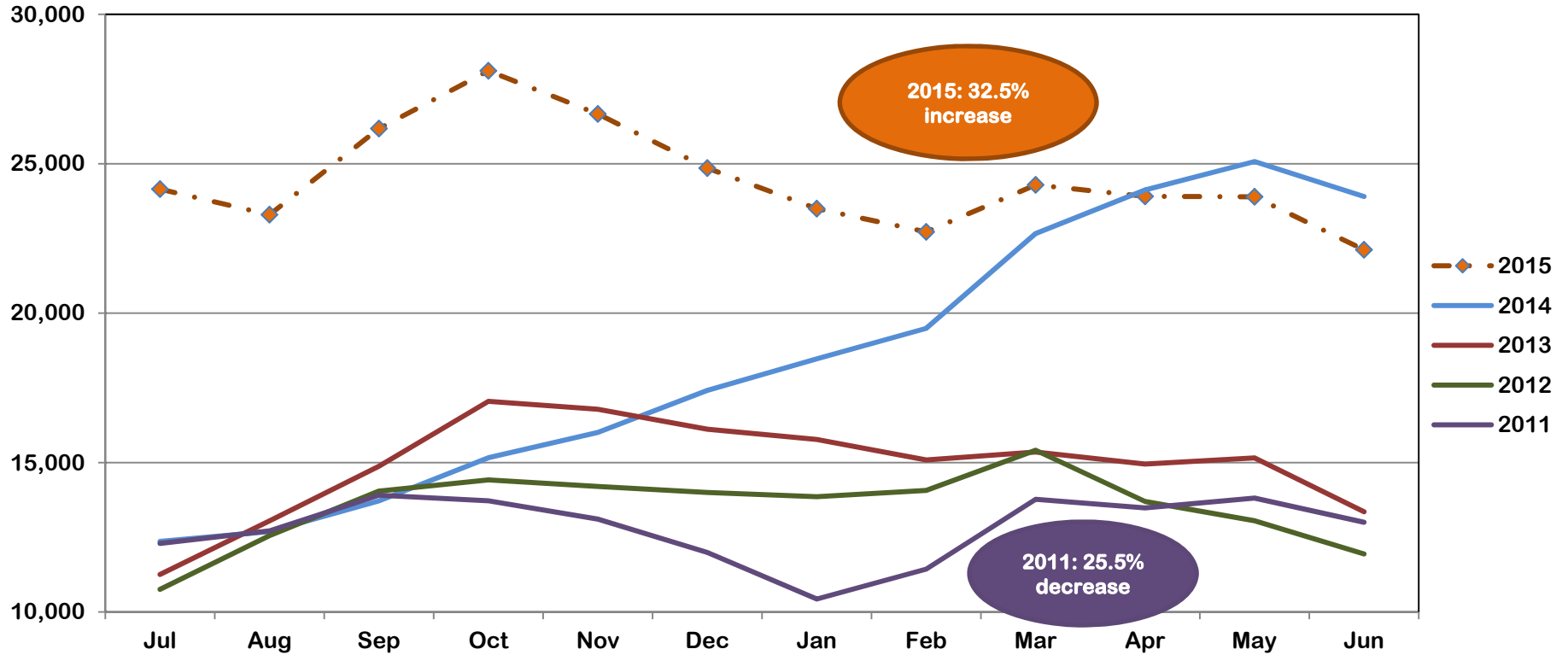
A calculated value based upon the ACF CFSR Round 3 which is part of Program Improvement. It is calculated from a rolling 12 month population of the entry cohort where the child remained in custody for over 8 days and was not 18 on the date of removal. The ACF Target is: 4.26 to avoid PIP. Georgia's Program Improvement Plan Target is: 5.51.

Source: SHINES

***Note: Data may vary from month to month due to 13 month data trends being re-run over the time span for the various outcomes in this report.*



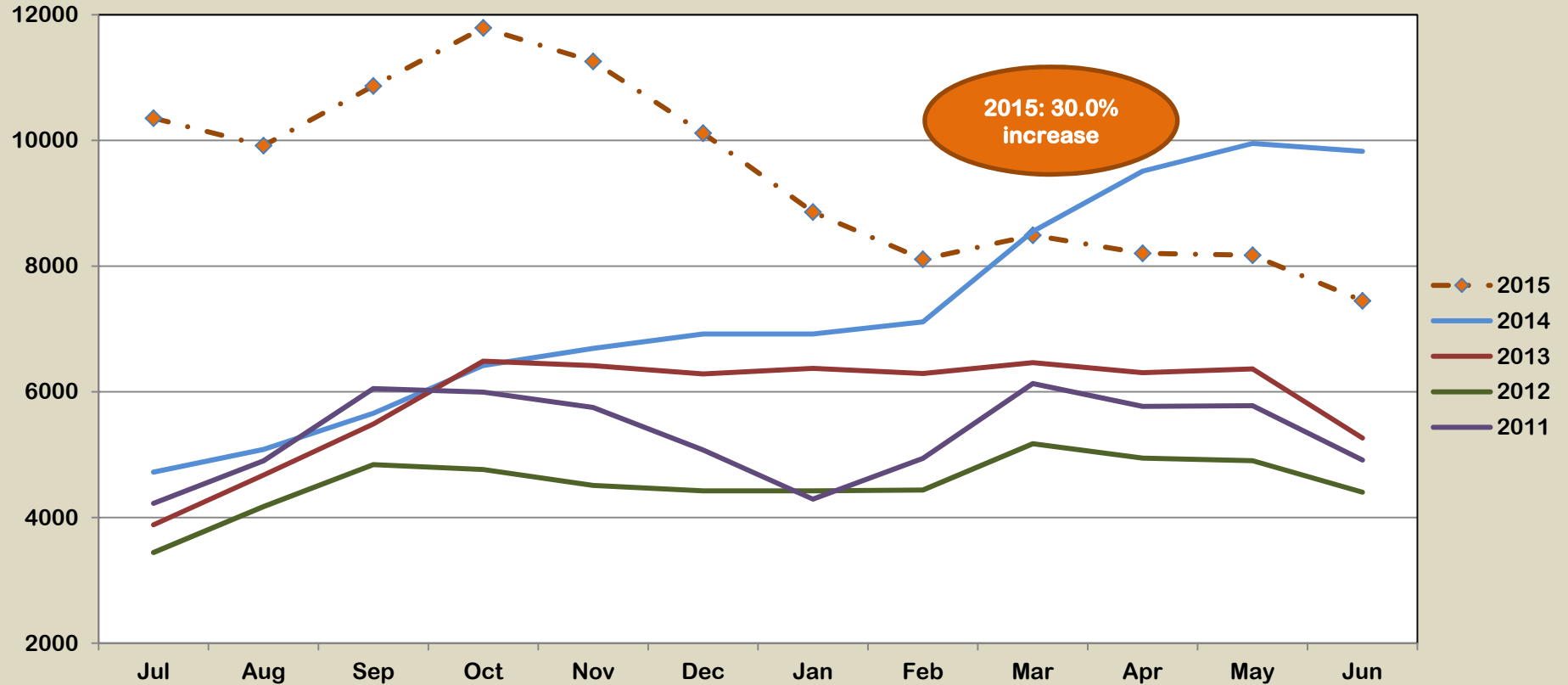
Outcome I: Child Protective Services Cases (June 2015)



State FY	Jul	Aug	Sep	Oct	Nov	Dec	Jan	Feb	Mar	Apr	May	Jun	Average	% Increase
2015	24,151	23,295	26,175	28,107	26,663	24,855	23,494	22,718	24,290	23,907	23,894	22,122	22,745	32.5%
2014	12,363	12,693	13,715	15,162	16,008	17,416	18,470	19,491	22,662	24,120	25,071	23,905	17,161	23.4%
2013	11,256	13,050	14,878	17,050	16,783	16,119	15,773	15,088	15,355	14,951	15,157	13,355	13,910	10.2%
2012	10,761	12,556	14,045	14,422	14,202	14,002	13,860	14,070	15,411	13,697	13,055	11,944	12,618	5.4%
2011	12,296	12,715	13,907	13,723	13,111	11,993	10,435	11,437	13,771	13,482	13,812	13,002	11,977	-25.5%



Outcome IA: Child Protective Services Cases Family Support Cases Only (June 2015)

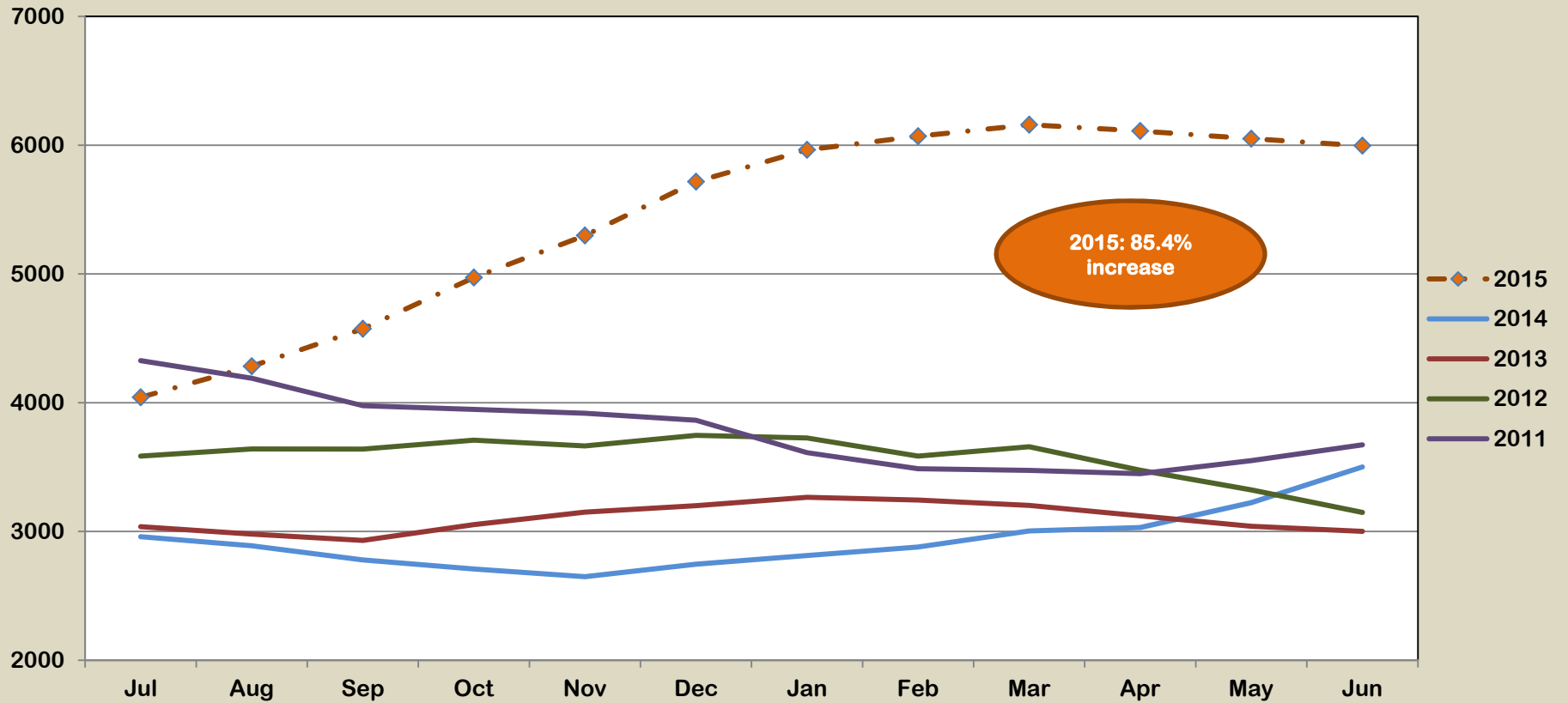


State FY	Jul	Aug	Sep	Oct	Nov	Dec	Jan	Feb	Mar	Apr	May	Jun	Average	% Increase
2015	10,353	9,918	10,865	11,790	11,258	10,116	8,860	8,109	8,492	8,204	8,174	7,448	9,466	30.0%
2014	4,723	5,083	5,658	6,418	6,690	6,919	6,919	7,113	8,552	9,511	9,951	9,826	7,280	24.3%
2013	3,883	4,674	5,487	6,488	6,417	6,284	6,374	6,292	6,463	6,304	6,364	5,265	5,858	29.1%
2012	3,443	4,173	4,842	4,764	4,510	4,423	4,425	4,437	5,174	4,945	4,903	4,402	4,537	-14.7%
2011	4,225	4,901	6,052	5,995	5,750	5,074	4,292	4,940	6,131	5,769	5,779	4,915	5,319	-13.3%



Division of Family and Children Services

Outcome IB: Child Protective Services Cases Family Preservation Cases Only (June 2015)



State FY	Jul	Aug	Sep	Oct	Nov	Dec	Jan	Feb	Mar	Apr	May	Jun	Average	% Increase
2015	4,042	4,283	4,574	4,972	5,299	5,717	5,964	6,070	6,159	6,110	6,051	5,996	5,436	85.4%
2014	2,960	2,889	2,779	2,709	2,649	2,746	2,813	2,879	3,004	3,031	3,224	3,501	2,932	-5.5%
2013	3,037	2,980	2,931	3,053	3,150	3,200	3,266	3,244	3,203	3,122	3,040	3,001	3,102	-13.2%
2012	3,586	3,641	3,640	3,709	3,665	3,747	3,726	3,586	3,658	3,476	3,323	3,148	3,575	-5.6%
2011	4,327	4,190	3,977	3,948	3,918	3,864	3,612	3,487	3,475	3,449	3,550	3,673	3,789	-30.4%

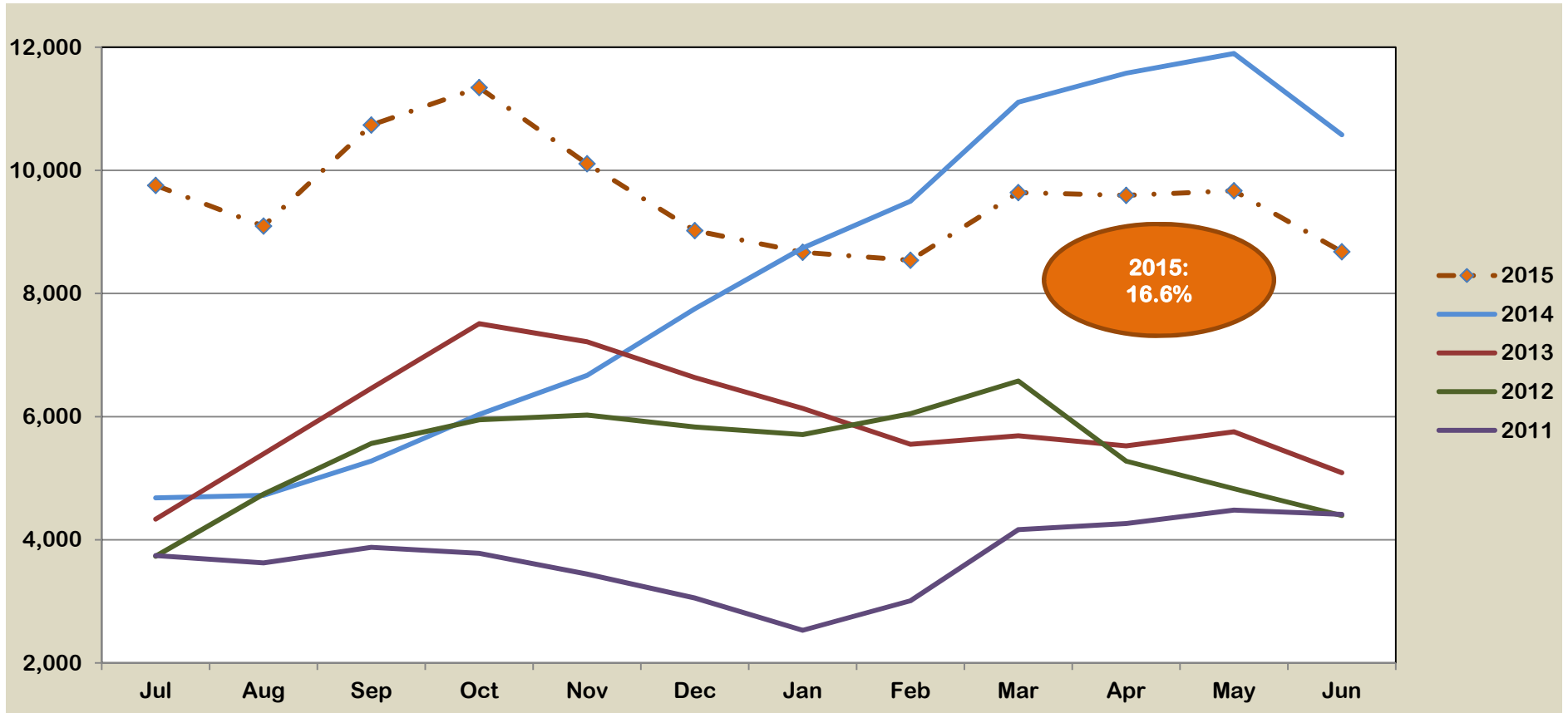


Division of Family and Children Services

Outcome IC: Child Protective Services Cases

Investigation Cases Only

(June 2015)

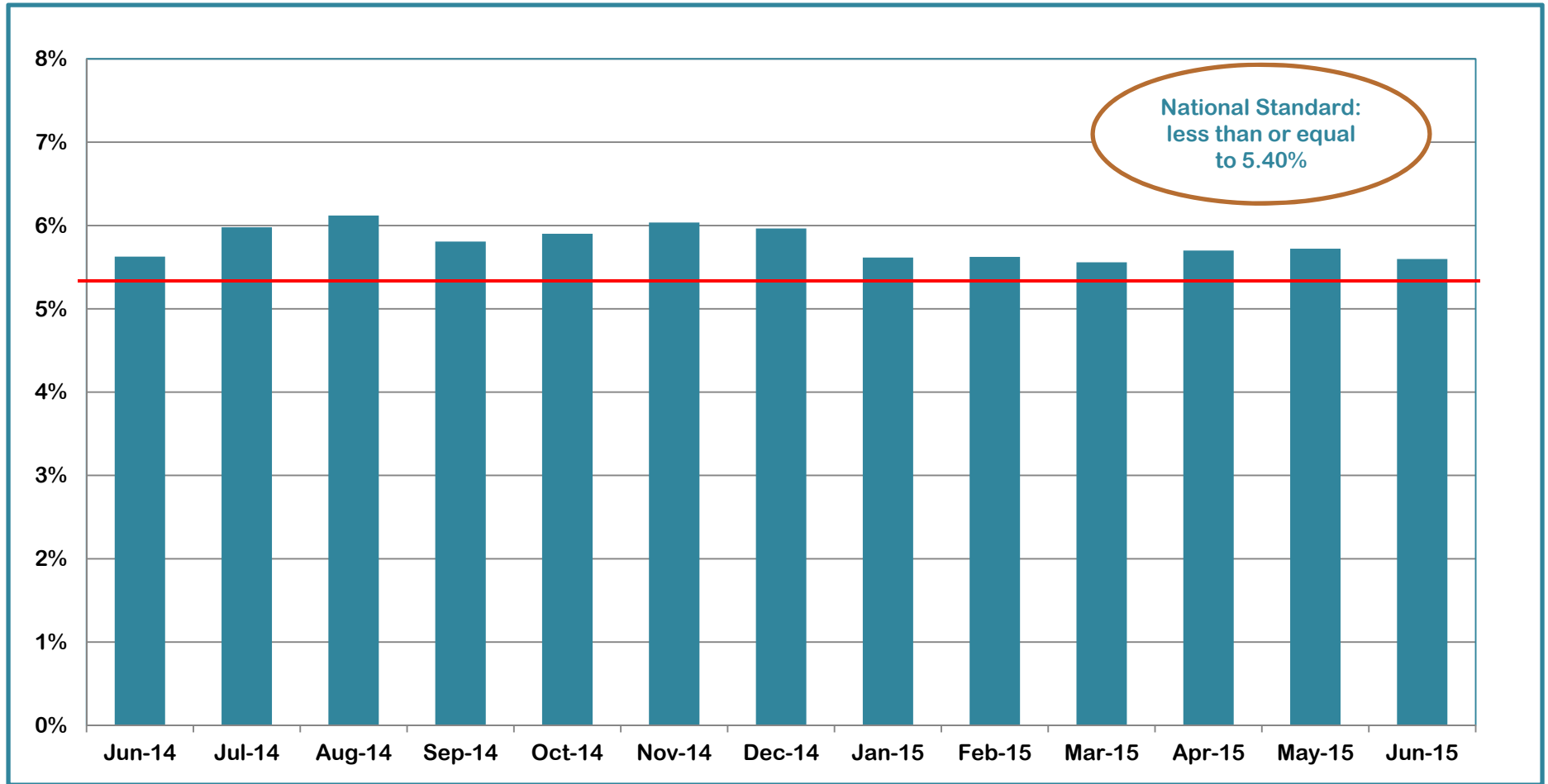


State FY	Jul	Aug	Sep	Oct	Nov	Dec	Jan	Feb	Mar	Apr	May	Jun	Average	% Increase
2015	9,756	9,094	10,736	11,345	10,106	9,022	8,670	8,539	9,639	9,593	9,669	8,678	9,571	16.6%
2014	4,680	4,721	5,278	6,035	6,669	7,751	8,738	9,499	11,106	11,578	11,896	10,578	8,211	38.2%
2013	4,336	5,396	6,460	7,509	7,216	6,635	6,133	5,552	5,689	5,525	5,753	5,089	5,941	10.2%
2012	3,732	4,742	5,563	5,949	6,027	5,832	5,709	6,047	6,579	5,276	4,829	4,394	5,390	45.7%
2011	3,744	3,624	3,878	3,780	3,443	3,055	2,531	3,010	4,165	4,264	4,483	4,414	3,699	-17.6%



Division of Family and Children Services

Outcome II: Recurrence of Substantiated Child Maltreatment (June 2014 – June 2015)

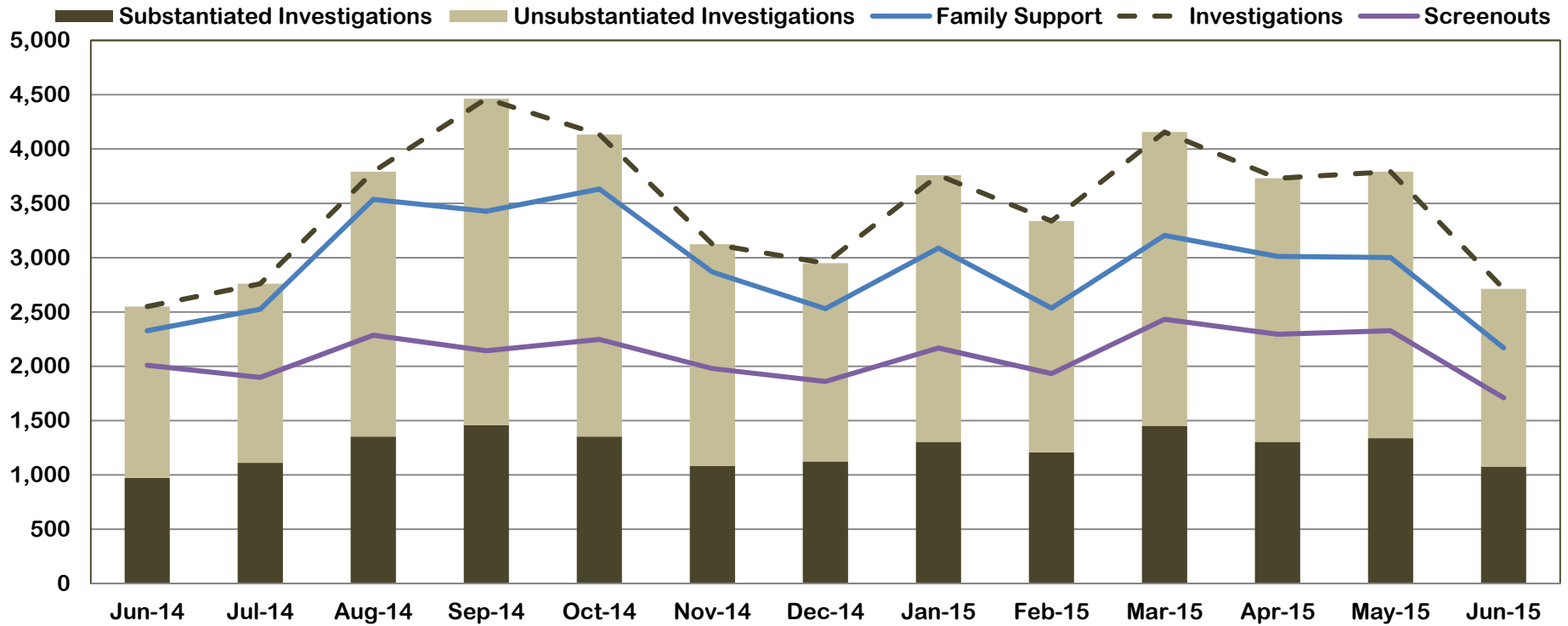


Jun-14	Jul-14	Aug-14	Sep-14	Oct-14	Nov-14	Dec-14	Jan-15	Feb-15	Mar-15	Apr-15	May-15	Jun-15
5.63%	5.98%	6.12%	5.81%	5.90%	6.04%	5.97%	5.62%	5.62%	5.56%	5.70%	5.72%	5.60%



Division of Family and Children Services

Outcome III: Disposition of Child Abuse and Neglect Reports (June 2014 - June 2015)

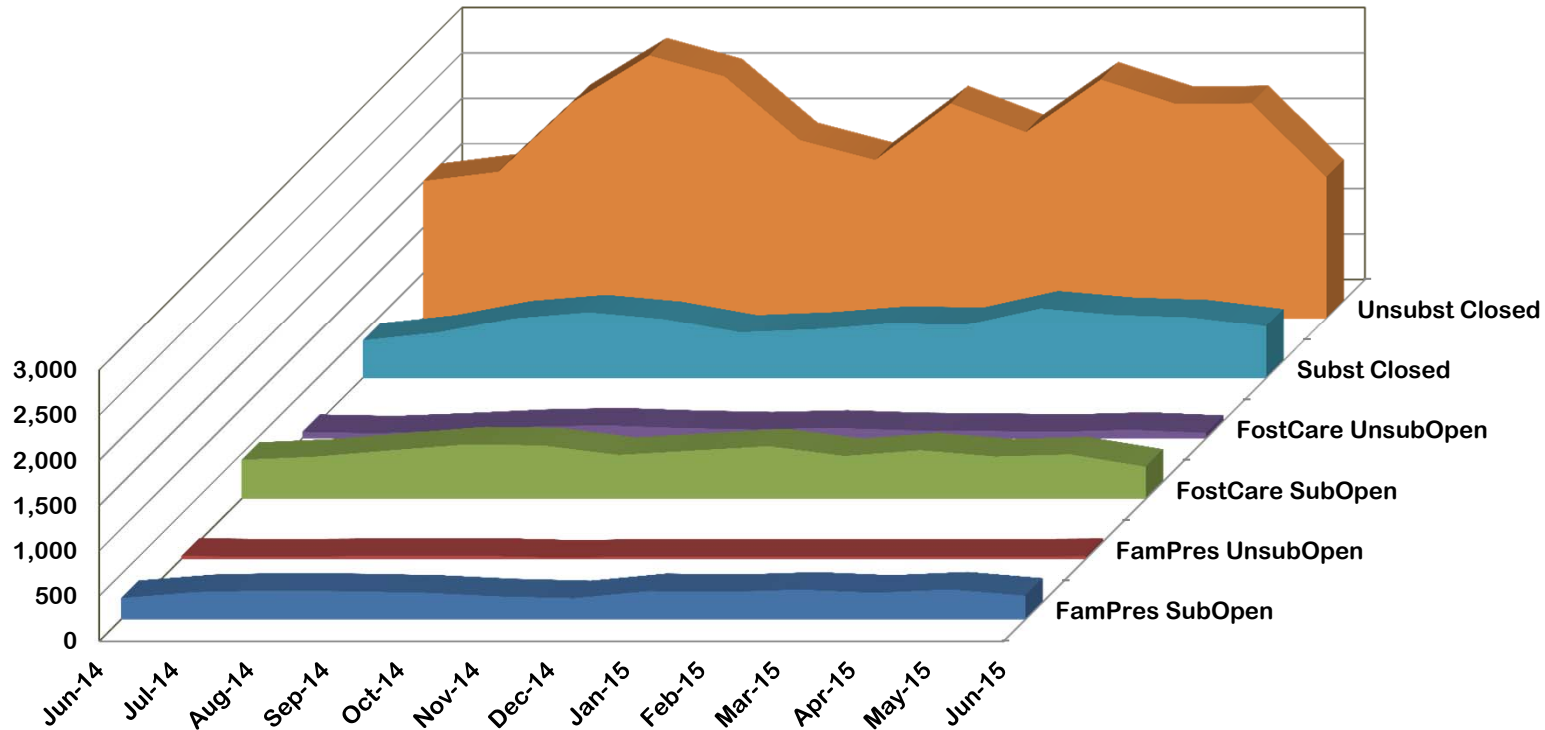


	Jun-14	Jul-14	Aug-14	Sep-14	Oct-14	Nov-14	Dec-14	Jan-15	Feb-15	Mar-15	Apr-15	May-15	Jun-15
Family Support	2,328	2,526	3,537	3,427	3,632	2,867	2,531	3,088	2,535	3,204	3,011	3,002	2,170
Screenouts	2,009	1,898	2,286	2,143	2,247	1,979	1,860	2,168	1,933	2,433	2,295	2,328	1,710
Investigations	2,550	2,760	3,792	4,464	4,134	3,124	2,949	3,760	3,337	4,157	3,731	3,792	2,713
Substantiated Investigations	972	1,112	1,354	1,459	1,354	1,081	1,124	1,305	1,208	1,450	1,305	1,338	1,077
Unsubstantiated Investigations	1,578	1,648	2,438	3,005	2,780	2,043	1,825	2,455	2,129	2,707	2,426	2,454	1,636



Division of Family and Children Services

Outcome III: Disposition of Child Abuse and Neglect Reports (June 2014 - June 2015)

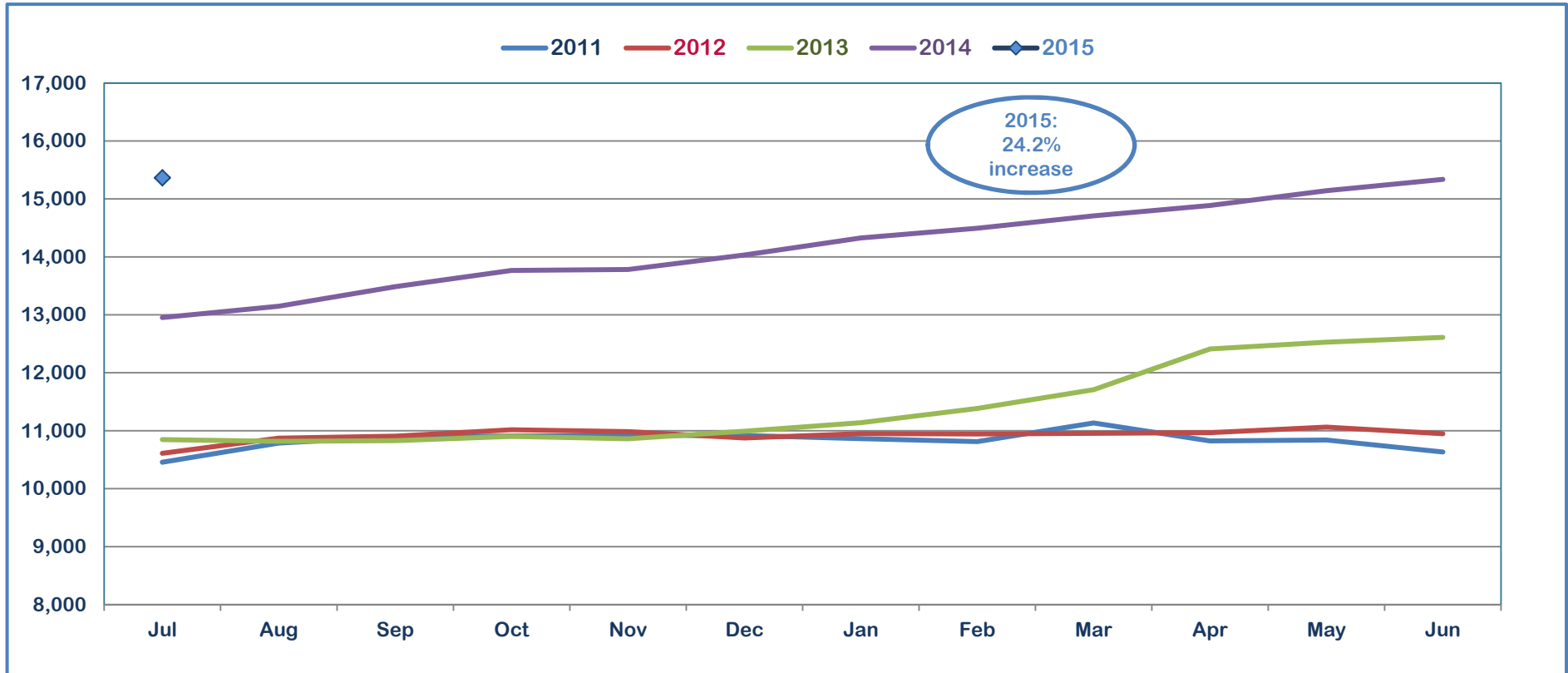


	Jun-14	Jul-14	Aug-14	Sep-14	Oct-14	Nov-14	Dec-14	Jan-15	Feb-15	Mar-15	Apr-15	May-15	Jun-15
FamPres SubOpen	239	305	323	314	298	258	237	316	306	332	298	334	265
FamPres UnsubOpen	37	31	34	41	40	19	30	30	26	26	29	32	35
FostCare SubOpen	432	469	539	604	591	486	536	583	474	539	468	492	356
FostCare UnsubOpen	73	57	89	129	146	117	100	120	92	85	74	97	62
Subst Closed	420	510	667	736	660	511	544	609	595	779	707	679	578
Unsubst Closed	1,517	1,621	2,395	2,903	2,671	1,969	1,750	2,374	2,057	2,637	2,367	2,375	1,562



Division of Family and Children Services

Outcome V: Number of Children in Placement Services (State Fiscal Year 2015)

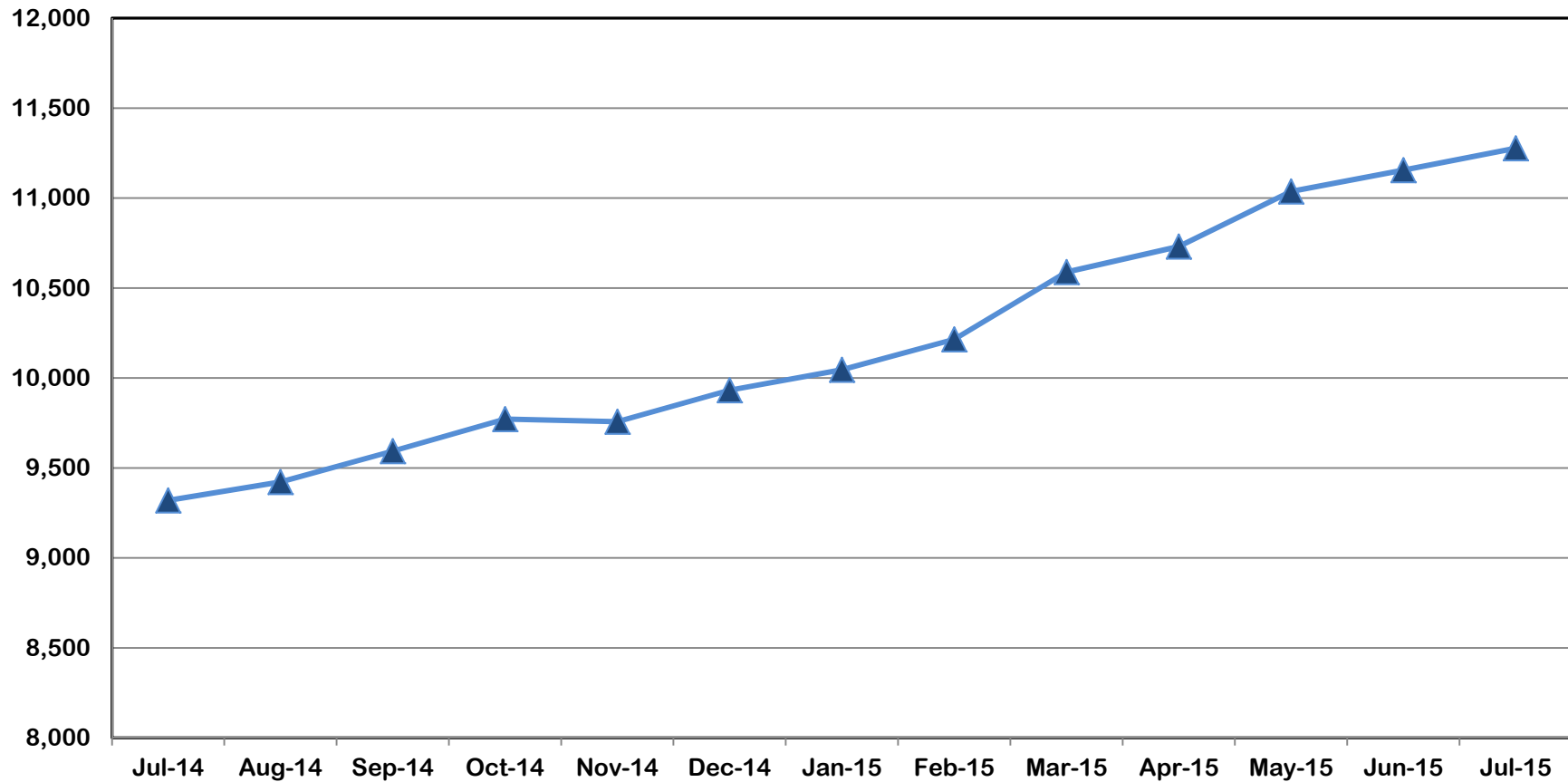


State FY	Jul	Aug	Sep	Oct	Nov	Dec	Jan	Feb	Mar	Apr	May	Jun	Average	% Increase
2015	15,364												15,364	0.0%
2014	12,952	13,149	13,486	13,766	13,782	14,032	14,326	14,495	14,707	14,887	15,143	15,338	14,172	24.1%
2013	10,847	10,817	10,828	10,903	10,861	10,992	11,139	11,384	11,707	12,410	12,527	12,611	11,419	4.5%
2012	10,610	10,871	10,907	11,016	10,984	10,875	10,951	10,944	10,955	10,966	11,063	10,948	10,924	0.8%
2011	10,457	10,788	10,893	10,908	10,917	10,919	10,863	10,813	11,135	10,823	10,839	10,634	10,832	8.0%



Division of Family and Children Services

Outcome VI: Children in DFCS Custody Under the Age of 18 (July 2014 – July 2015)

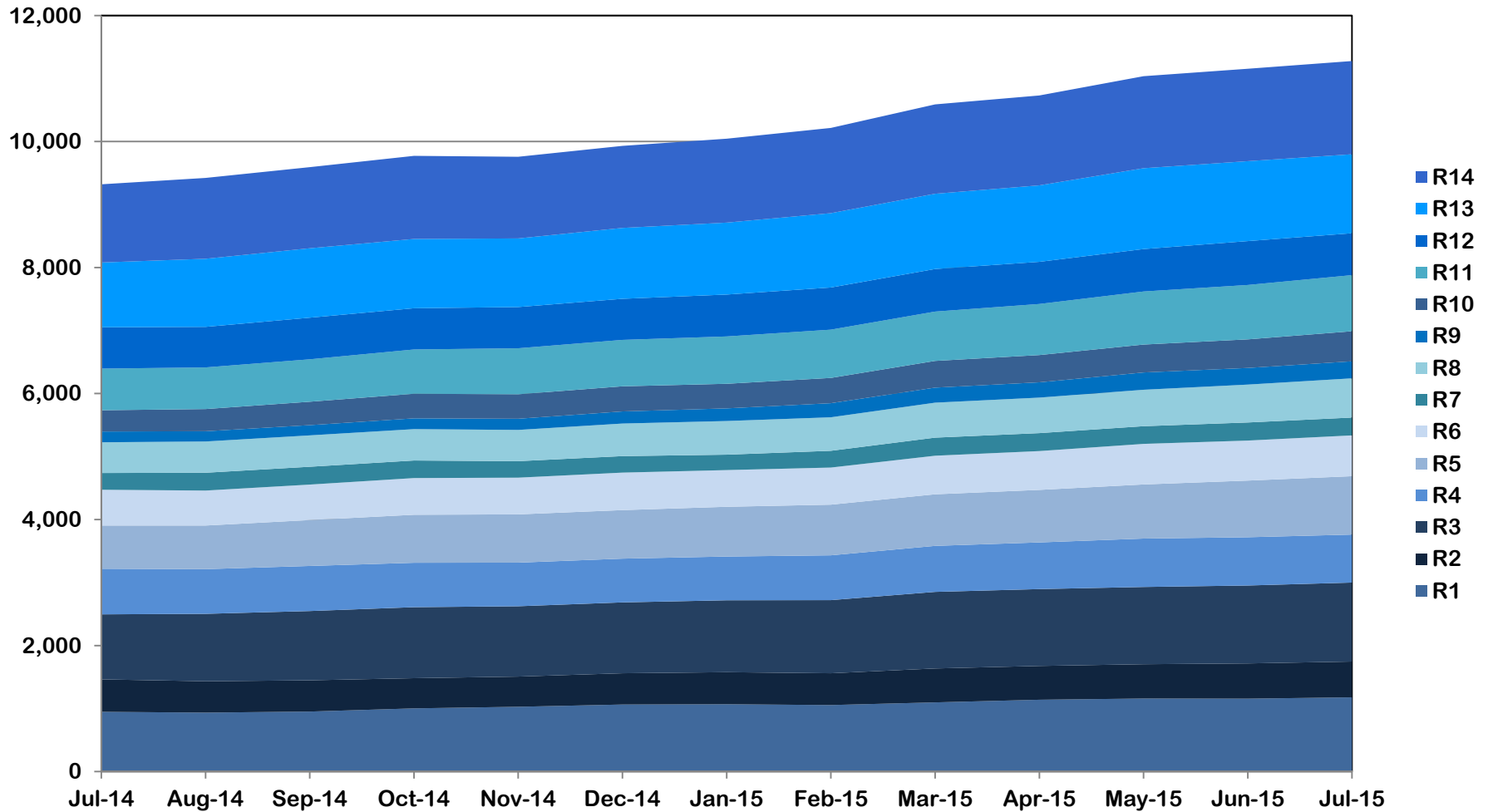


Jul-14	Aug-14	Sep-14	Oct-14	Nov-14	Dec-14	Jan-15	Feb-15	Mar-15	Apr-15	May-15	Jun-15	Jul-15
9,320	9,422	9,594	9,772	9,757	9,932	10,046	10,215	10,589	10,731	11,037	11,155	11,277



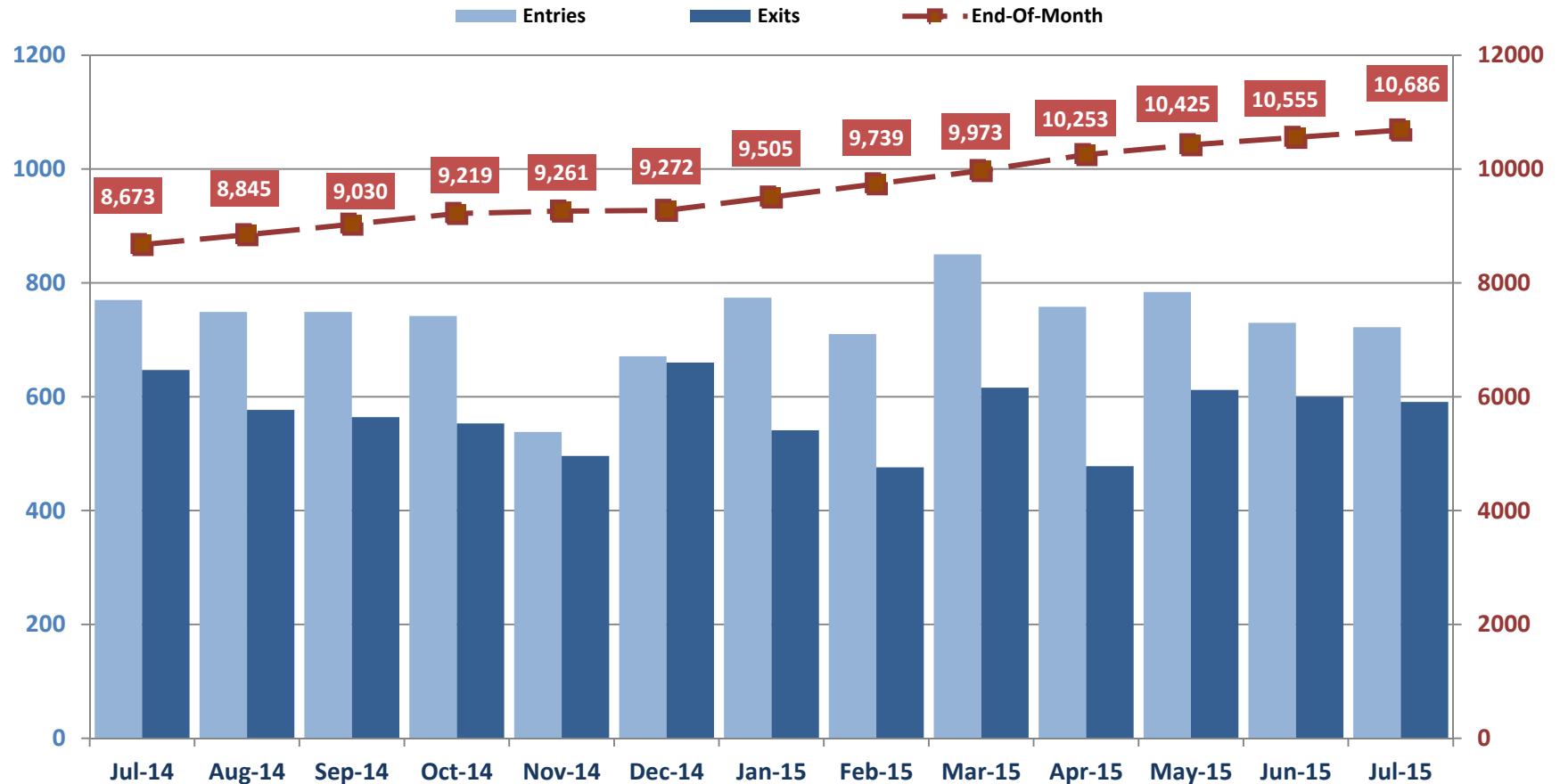
Division of Family and Children Services

Outcome VI-A: Children in DFCS Custody Under the Age of 18 -(Regional) (July 2014 – July 2015)



Division of Family and Children Services

Outcome VI: Comparison of Foster Care Entries and Exits (July 2014 – July 2015)

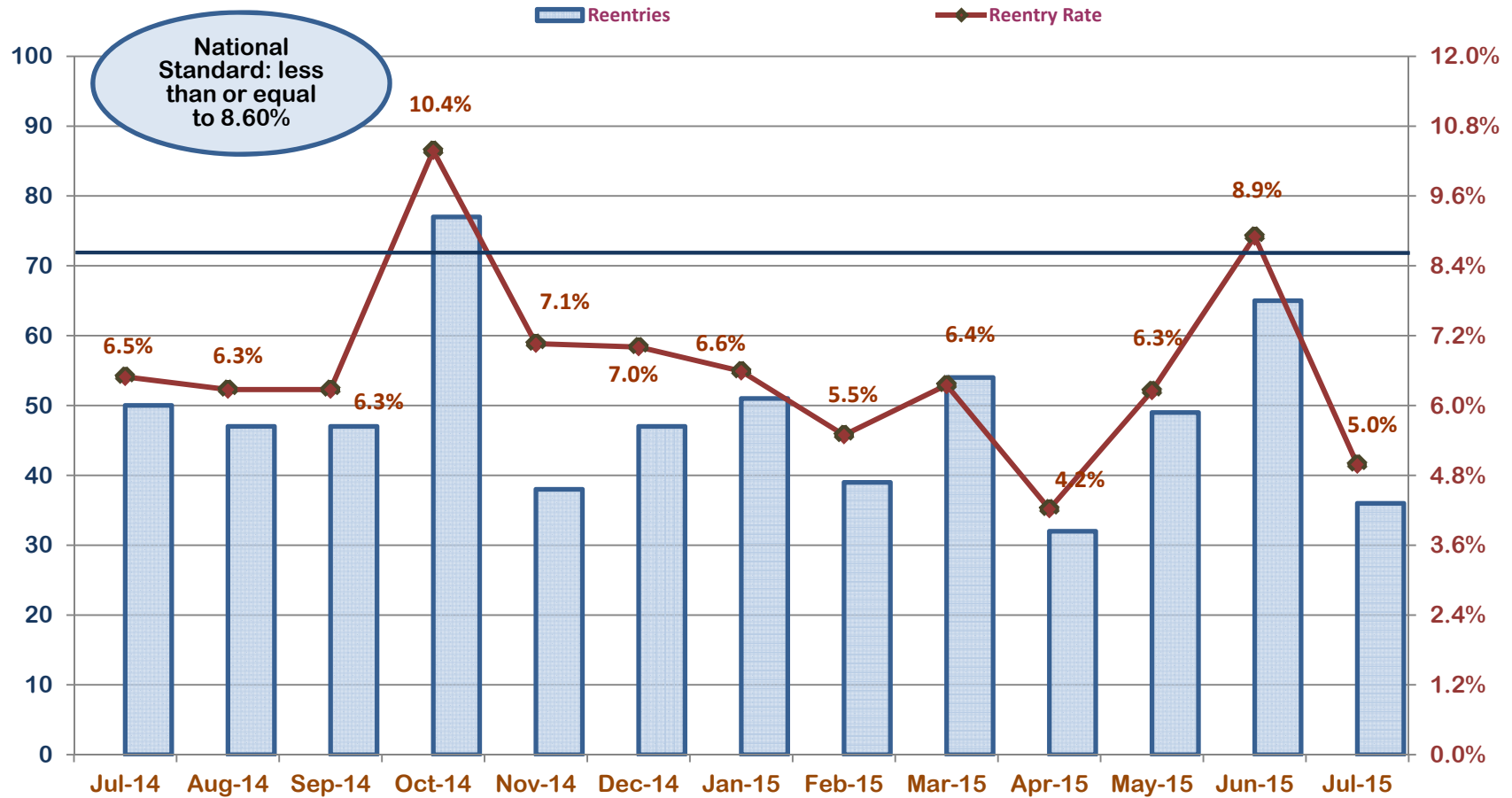


Jul-14	Aug-14	Sep-14	Oct-14	Nov-14	Dec-14	Jan-15	Feb-15	Mar-15	Apr-15	May-15	Jun-15	Jul-15
770	749	749	742	538	671	774	710	850	758	784	730	722
647	577	564	553	496	660	541	476	616	478	612	600	591



Division of Family and Children Services

Outcome VII: Foster Care Re-Entry Rate (July 2014 – July 2015)

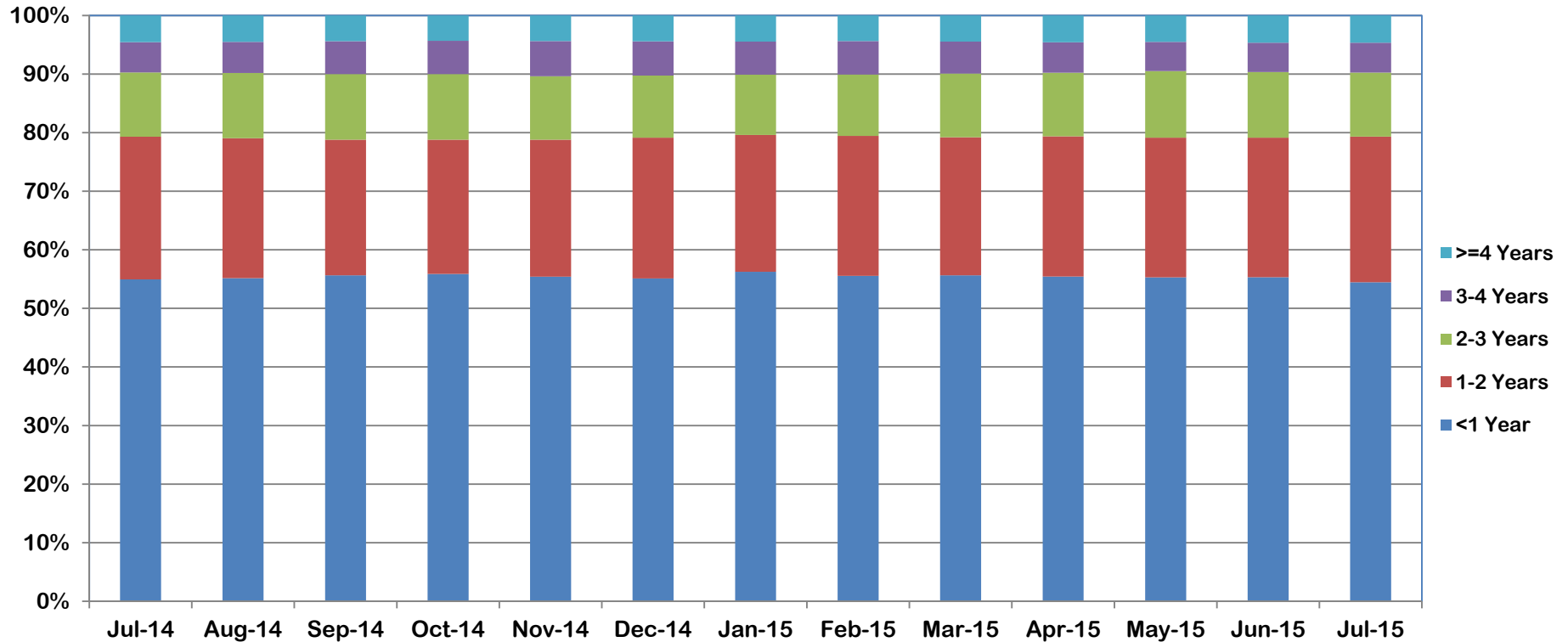


Jul-14	Aug-14	Sep-14	Oct-14	Nov-14	Dec-14	Jan-15	Feb-15	Mar-15	Apr-15	May-15	Jun-15	Jul-15
6.5%	6.3%	6.3%	10.4%	7.1%	7.0%	6.6%	5.5%	6.4%	4.2%	6.3%	8.9%	5.0%



Division of Family and Children Services

Outcome VIII: Foster Care Length of Stay (July 2014 – July 2015)

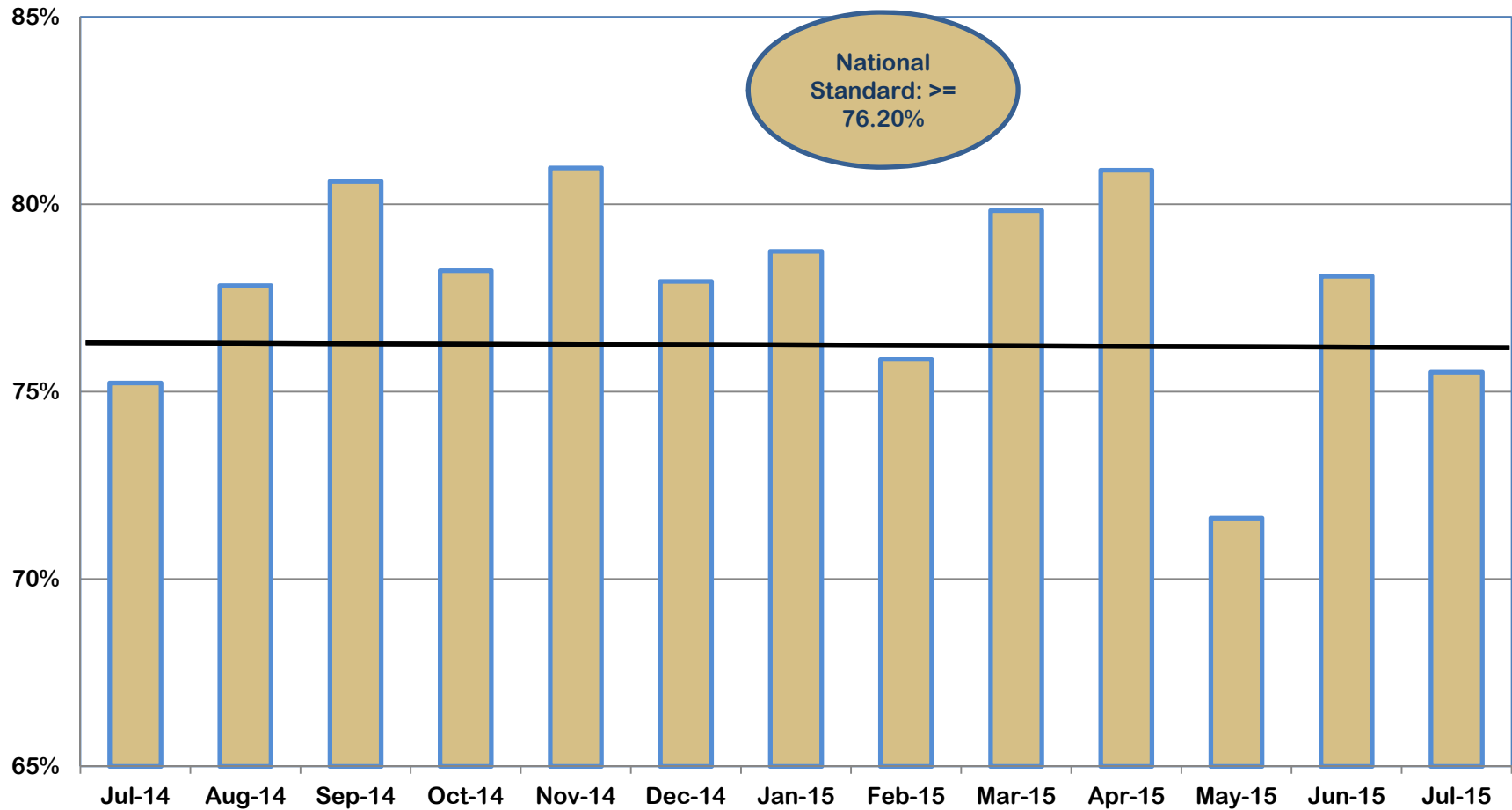


	Jul-14	Aug-14	Sep-14	Oct-14	Nov-14	Dec-14	Jan-15	Feb-15	Mar-15	Apr-15	May-15	Jun-15	Jul-15
<1 Year	54.9%	55.2%	55.6%	55.9%	55.4%	55.1%	56.3%	55.5%	55.7%	55.4%	55.3%	55.3%	54.5%
1 - <2 Years	24.4%	23.9%	23.2%	22.9%	23.4%	24.0%	23.4%	23.9%	23.6%	23.9%	23.9%	23.8%	24.9%
2 - <3 Years	11.0%	11.6%	11.2%	11.4%	11.0%	11.1%	11.2%	11.2%	10.8%	10.6%	10.3%	10.5%	10.9%
3 - <4 Years	5.2%	5.3%	5.6%	5.7%	6.0%	5.8%	5.6%	5.7%	5.4%	5.2%	5.0%	5.0%	5.1%
>=4 Years	4.5%	4.5%	4.4%	4.3%	4.3%	4.4%	4.4%	4.3%	4.4%	4.6%	4.5%	4.6%	4.6%



Division of Family and Children Services

Outcome IX: Length of Time to Reunification (July 2014 – July 2015)

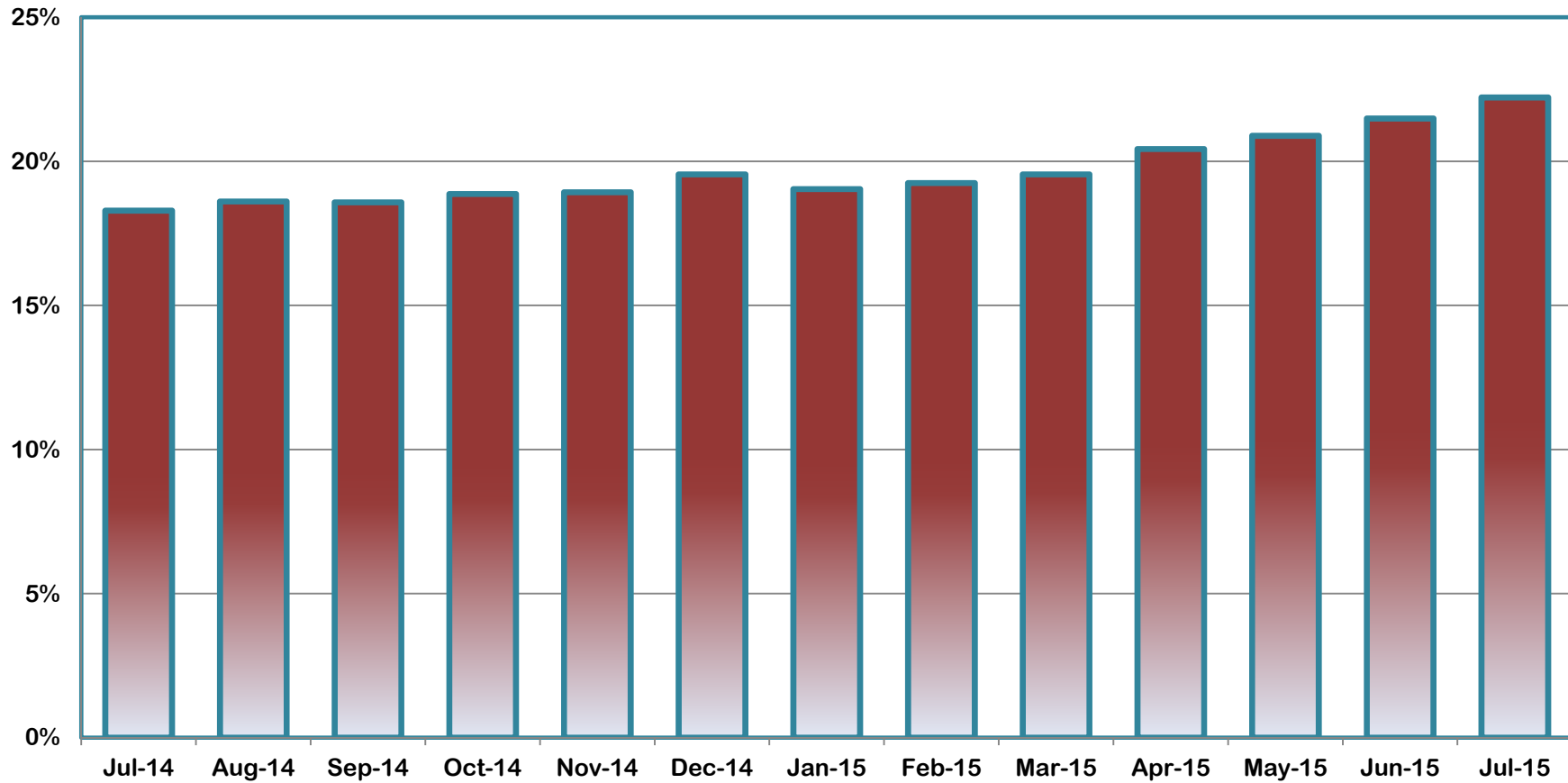


Jul-14	Aug-14	Sep-14	Oct-14	Nov-14	Dec-14	Jan-15	Feb-15	Mar-15	Apr-15	May-15	Jun-15	Jul-15
75.2%	77.8%	80.6%	78.2%	81.0%	77.9%	78.7%	75.9%	79.8%	80.9%	71.6%	78.1%	75.5%



Division of Family and Children Services

Outcome X: Percent of Children Placed with Relatives (July 2014 – July 2015)

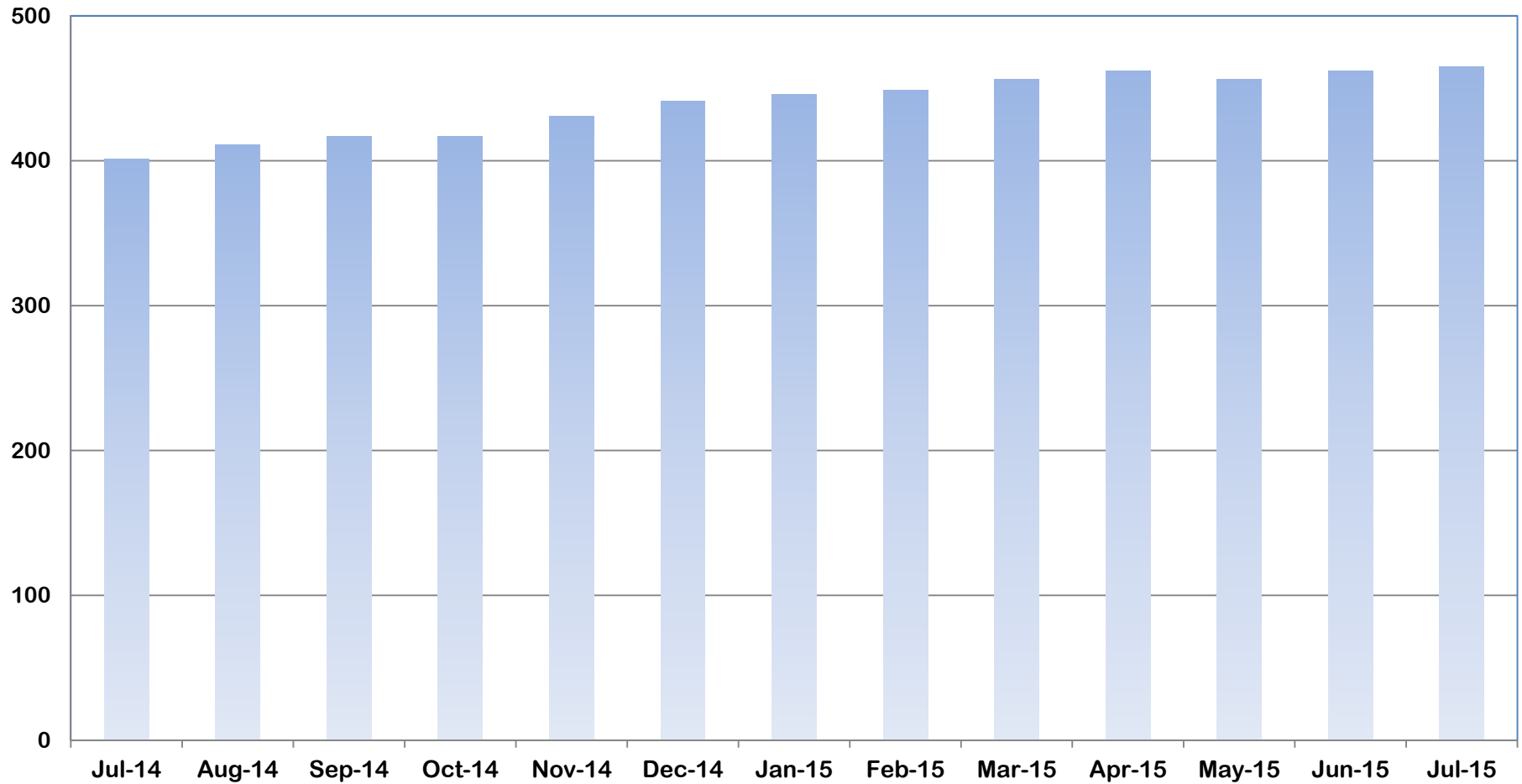


Jul-14	Aug-14	Sep-14	Oct-14	Nov-14	Dec-14	Jan-15	Feb-15	Mar-15	Apr-15	May-15	Jun-15	Jul-15
18.3%	18.6%	18.6%	18.9%	18.9%	19.6%	19.0%	19.3%	19.6%	20.4%	20.9%	21.5%	22.2%



Division of Family and Children Services

Outcome XI: Extended Youth Services (July 2014 – July 2015)

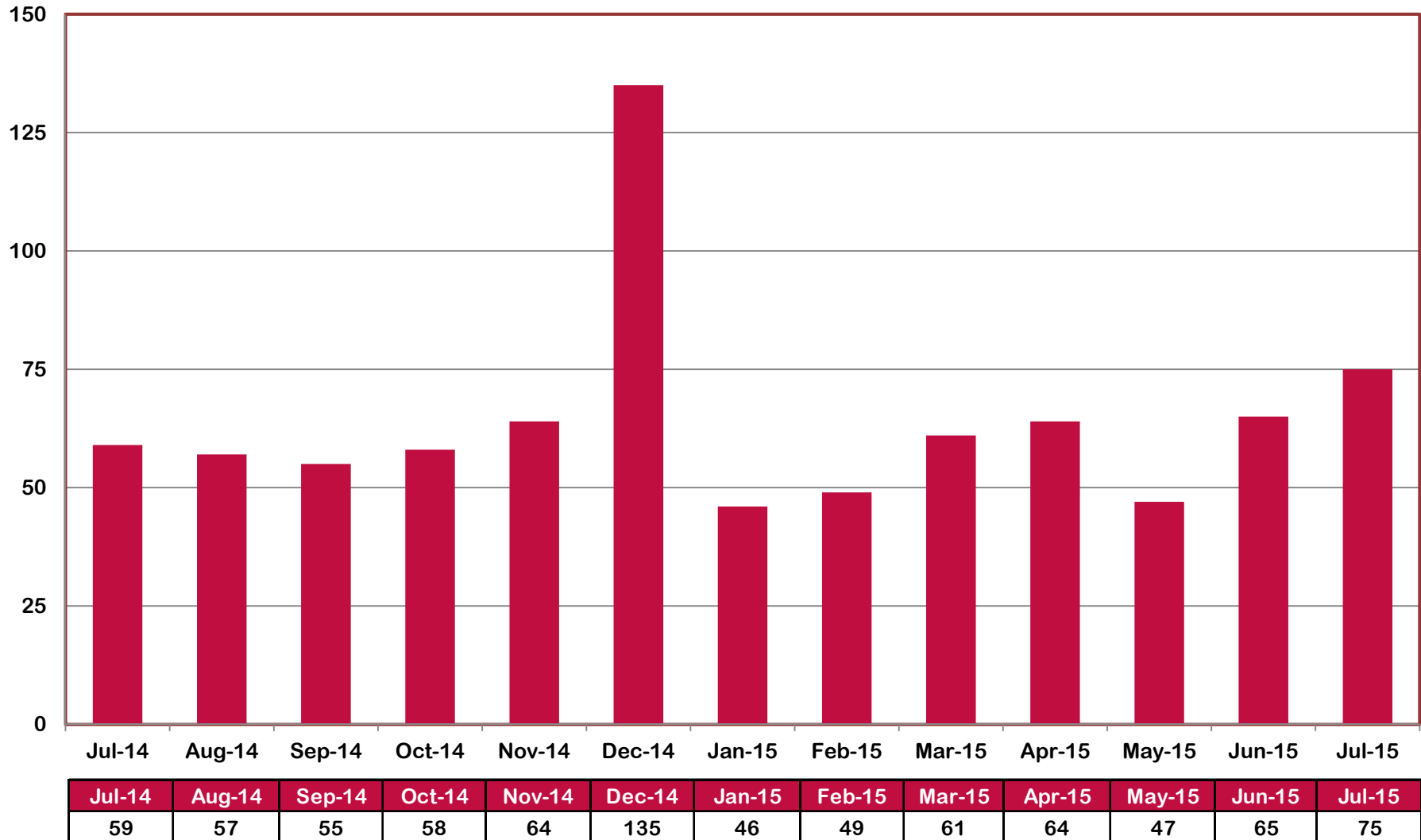


Jul-14	Aug-14	Sep-14	Oct-14	Nov-14	Dec-14	Jan-15	Feb-15	Mar-15	Apr-15	May-15	Jun-15	Jul-15
401	411	417	417	431	441	446	449	456	462	456	462	465



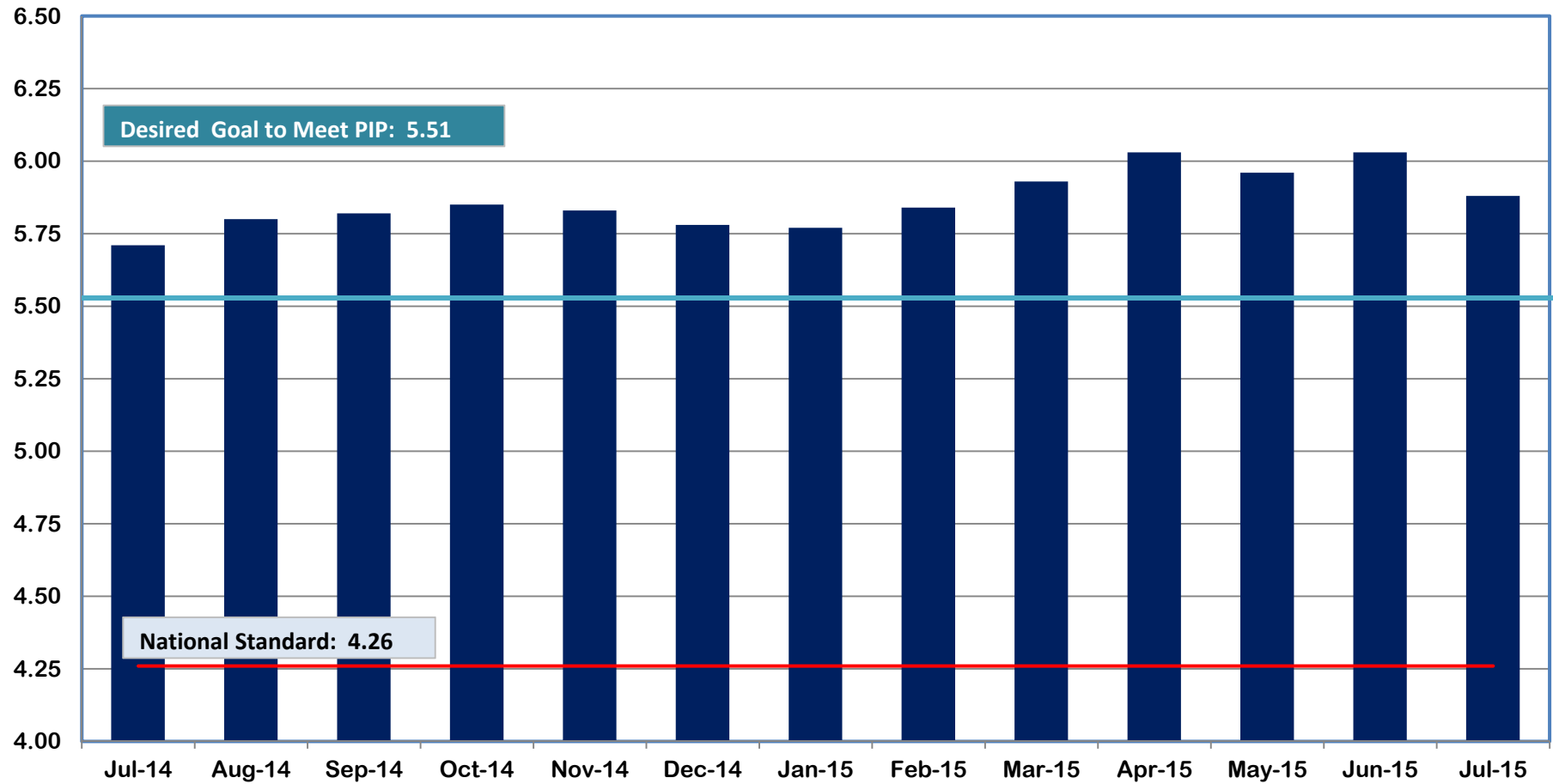
Division of Family and Children Services

Outcome XII: Number of Finalized Adoptions (July 2014 – July 2015)



Division of Family and Children Services

Outcome XII: Placement Stability Performance Coefficient (July 2014 - July 2015)



Jul-14	Aug-14	Sep-14	Oct-14	Nov-14	Dec-14	Jan-15	Feb-15	Mar-15	Apr-15	May-15	Jun-15	Jul-15
5.71	5.80	5.82	5.85	5.83	5.78	5.77	5.84	5.93	6.03	5.96	6.03	5.88



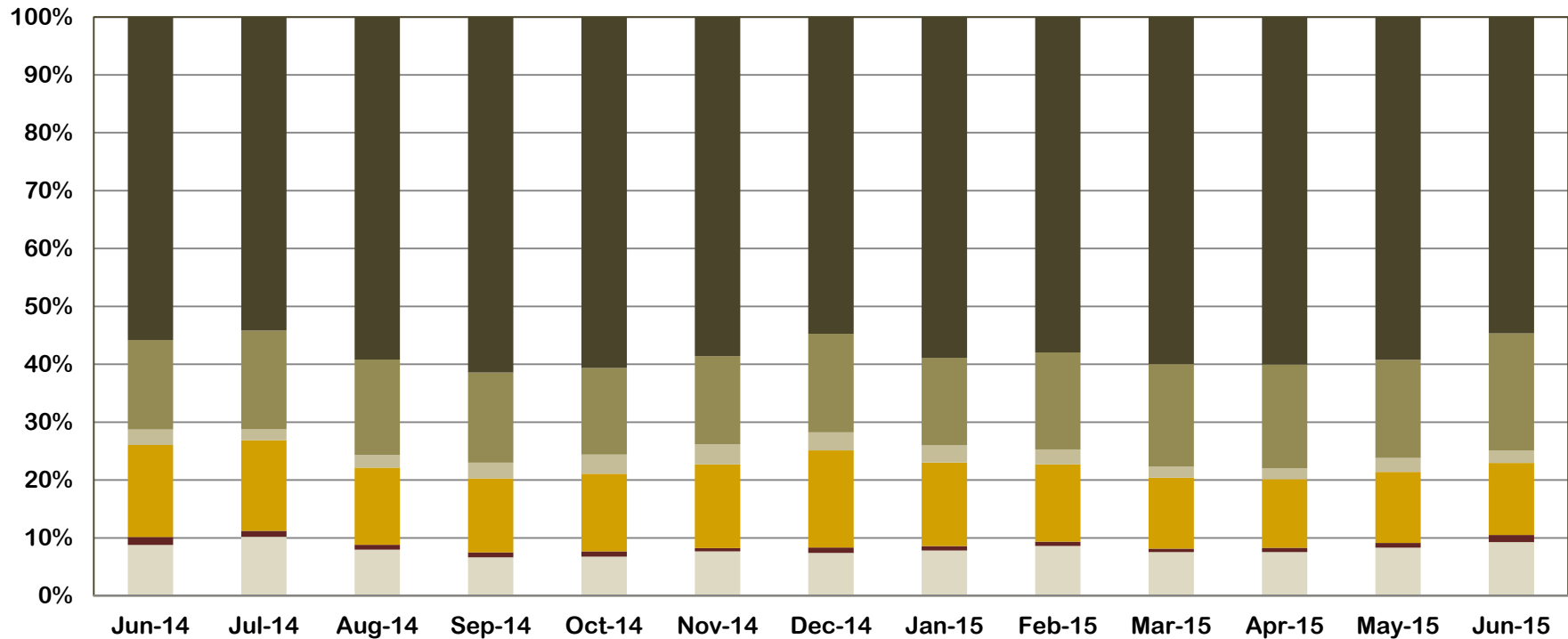
Division of Family and Children Services

Appendices



Appendix A

Outcome IV: Subsequent Case-Type of Investigations by Disposition (June 2014 – June 2015)



	Jun-14	Jul-14	Aug-14	Sep-14	Oct-14	Nov-14	Dec-14	Jan-15	Feb-15	Mar-15	Apr-15	May-15	Jun-15
Fam. Pres SubOpen	239	305	323	314	298	258	237	316	306	332	298	334	265
FamPres UnsubOpen	37	31	34	41	40	19	30	30	26	26	29	32	35
FostCare SubOpen	432	469	539	604	591	486	536	583	474	539	468	492	356
FostCare UnsubOpen	73	57	89	129	146	117	100	120	92	85	74	97	62
Subst Closed	420	510	667	736	660	511	544	609	595	779	707	679	578
Unsubst Closed	1,517	1,621	2,395	2,903	2,671	1,969	1,750	2,374	2,057	2,637	2,367	2,375	1,562



Division of Family and Children Services

APPENDIX B

Regional Graphs of Outcome VI

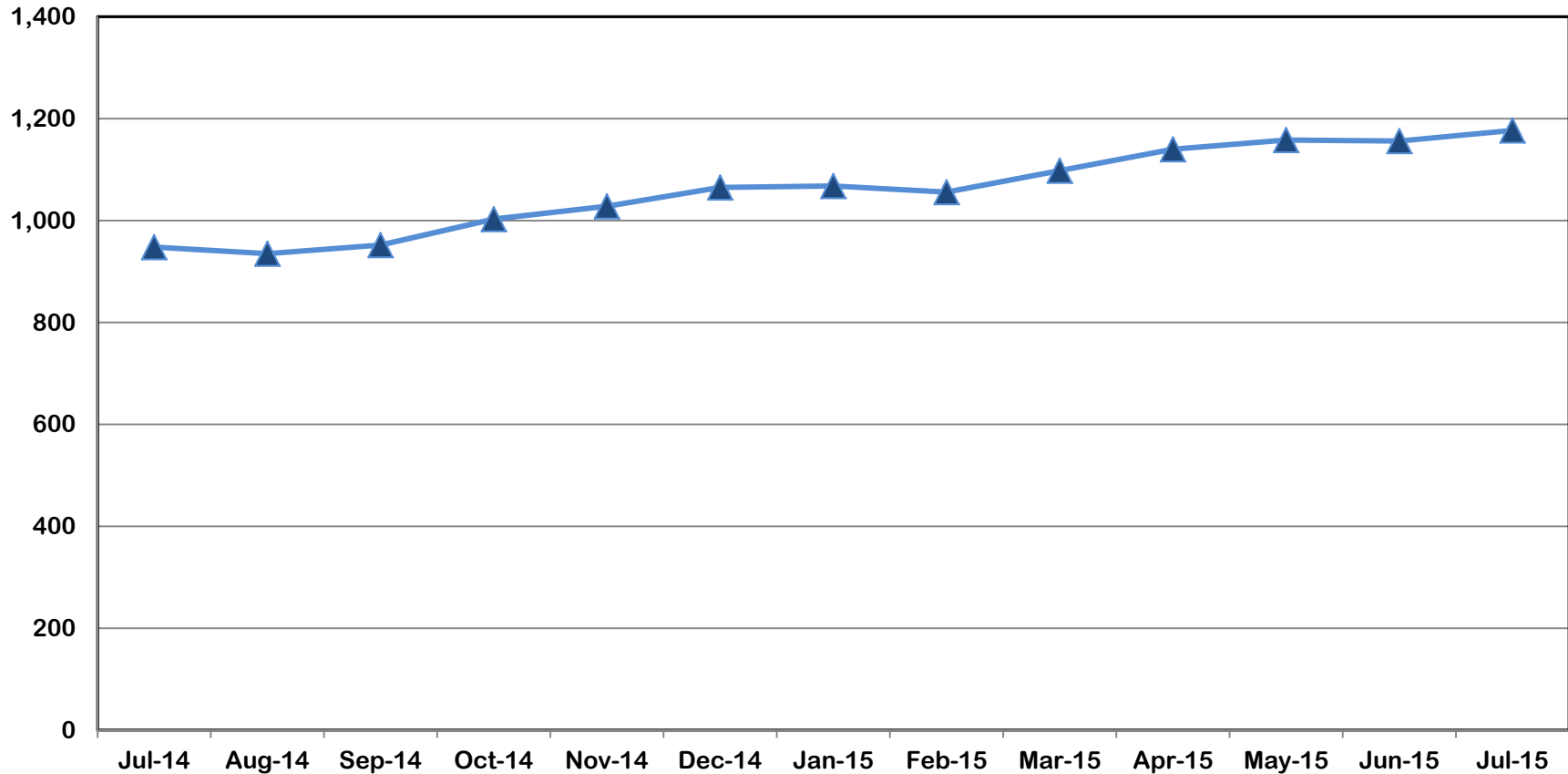
Children in DFCS Custody Under the Age of 18
(July 2014 – July 2015)



Division of Family and Children Services

Outcome VI: Children in DFCS Custody Under the Age of 18 (July 2014 – July 2015)

Region I



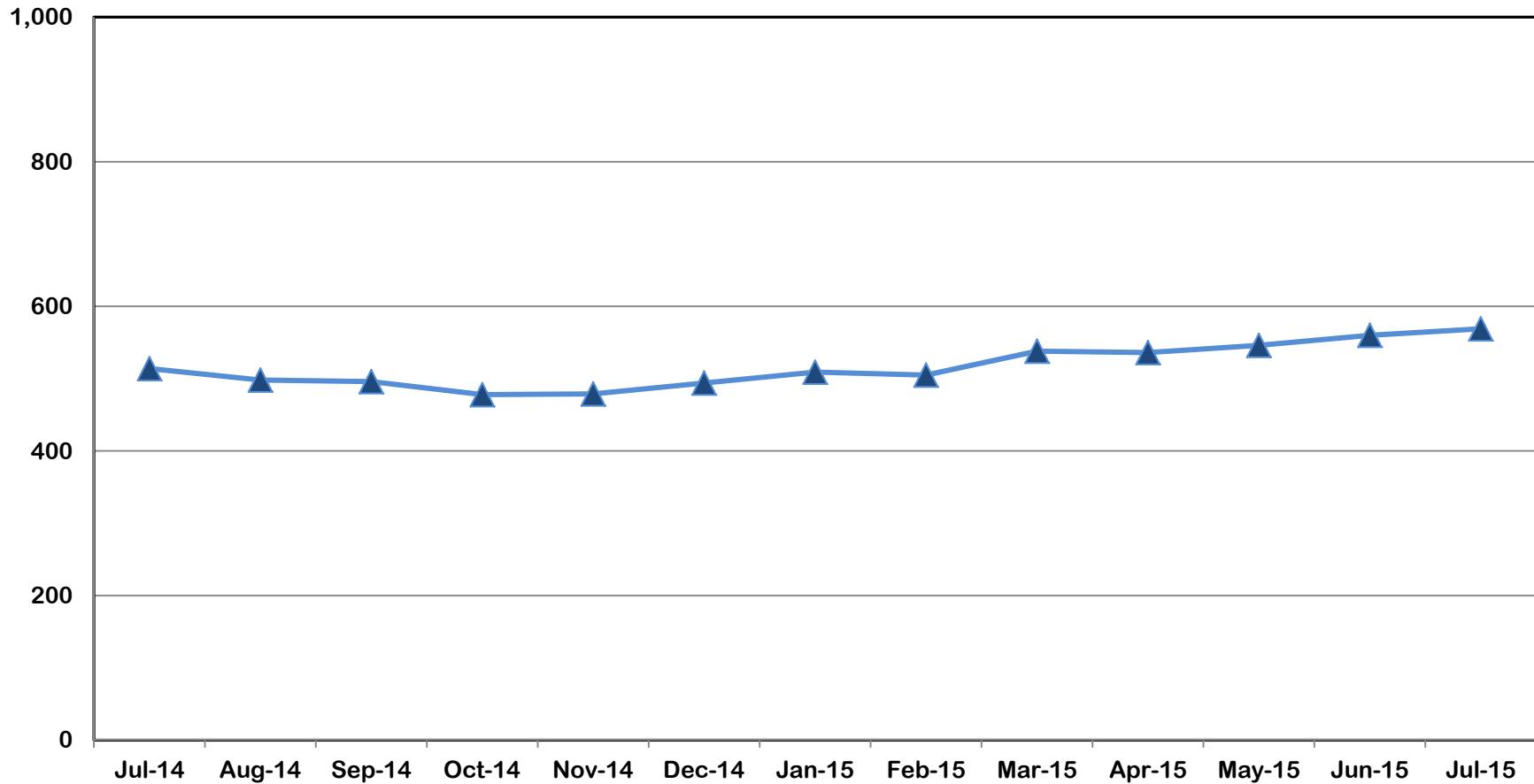
Jul-14	Aug-14	Sep-14	Oct-14	Nov-14	Dec-14	Jan-15	Feb-15	Mar-15	Apr-15	May-15	Jun-15	Jul-15
948	935	952	1,003	1,028	1,065	1,068	1,056	1,098	1,140	1,158	1,156	1,177



Division of Family and Children Services

Outcome VI: Children in DFCS Custody Under the Age of 18 (July 2014 – July 2015)

Region II



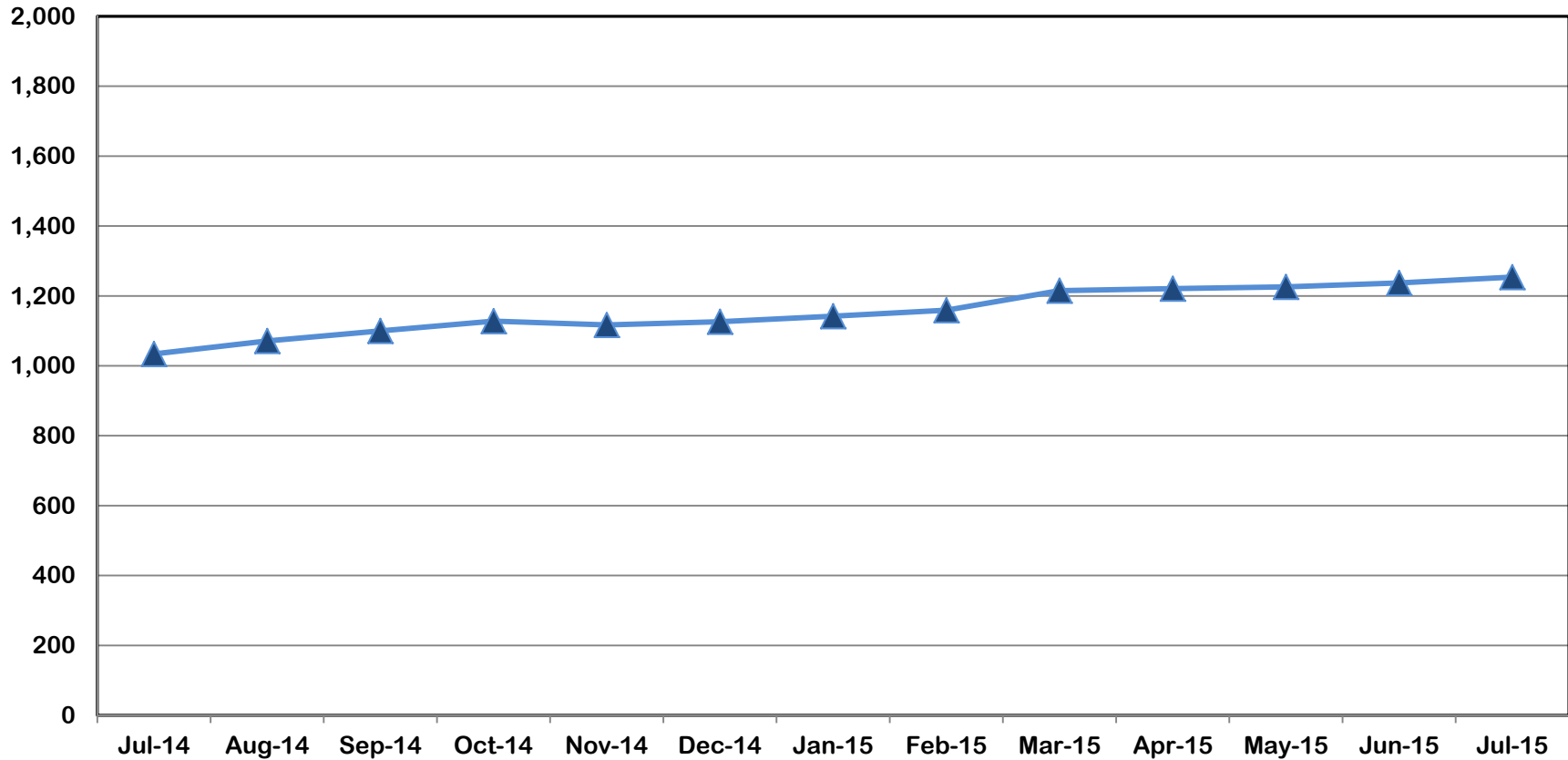
Jul-14	Aug-14	Sep-14	Oct-14	Nov-14	Dec-14	Jan-15	Feb-15	Mar-15	Apr-15	May-15	Jun-15	Jul-15
514	498	496	478	479	494	509	505	538	536	546	560	569



Division of Family and Children Services

Outcome VI: Children in DFCS Custody Under the Age of 18 (July 2014 – July 2015)

Region III



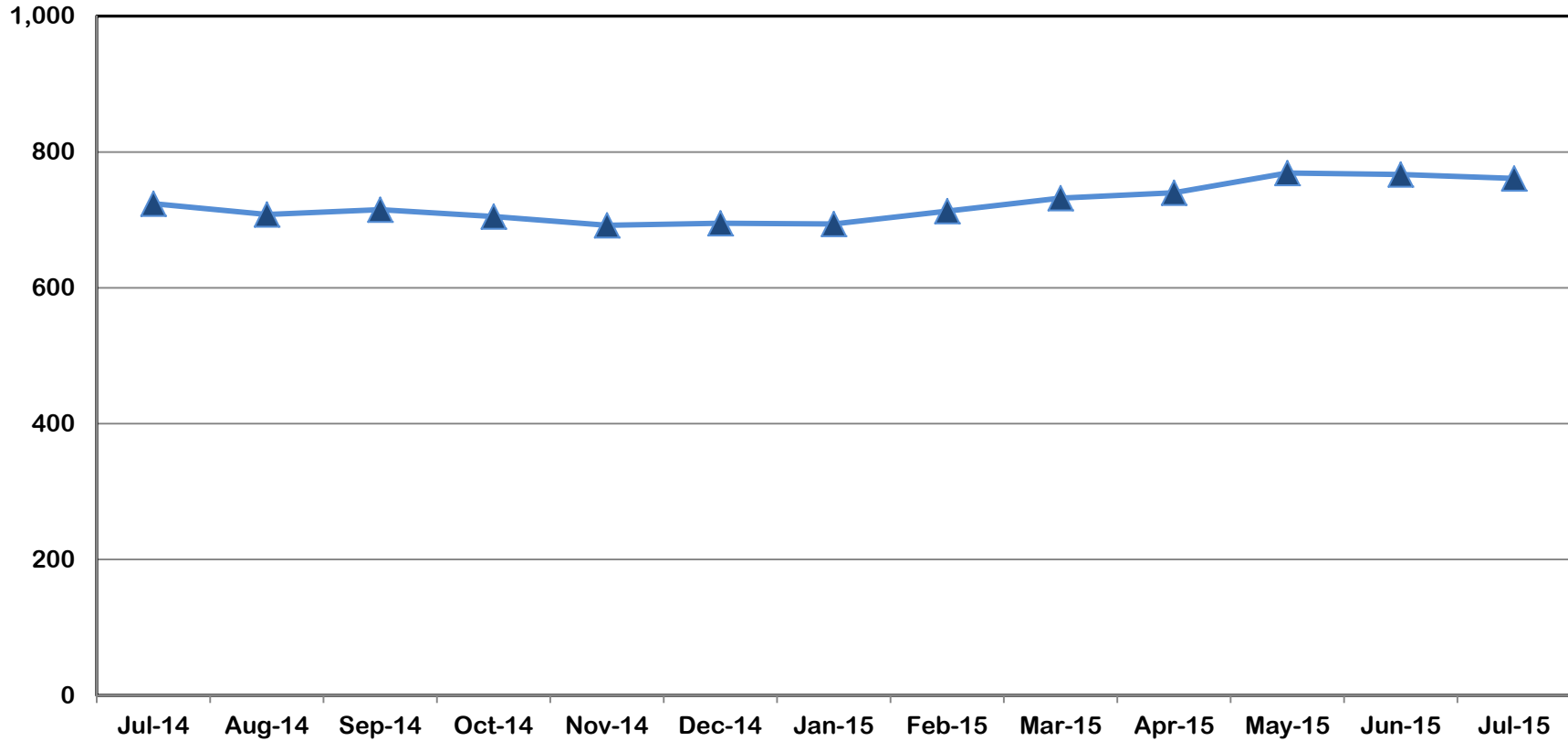
Jul-14	Aug-14	Sep-14	Oct-14	Nov-14	Dec-14	Jan-15	Feb-15	Mar-15	Apr-15	May-15	Jun-15	Jul-15
1,034	1,071	1,100	1,128	1,117	1,126	1,142	1,159	1,215	1,221	1,226	1,237	1,254



Division of Family and Children Services

Outcome VI: Children in DFCS Custody Under the Age of 18 (July 2014 – July 2015)

Region IV



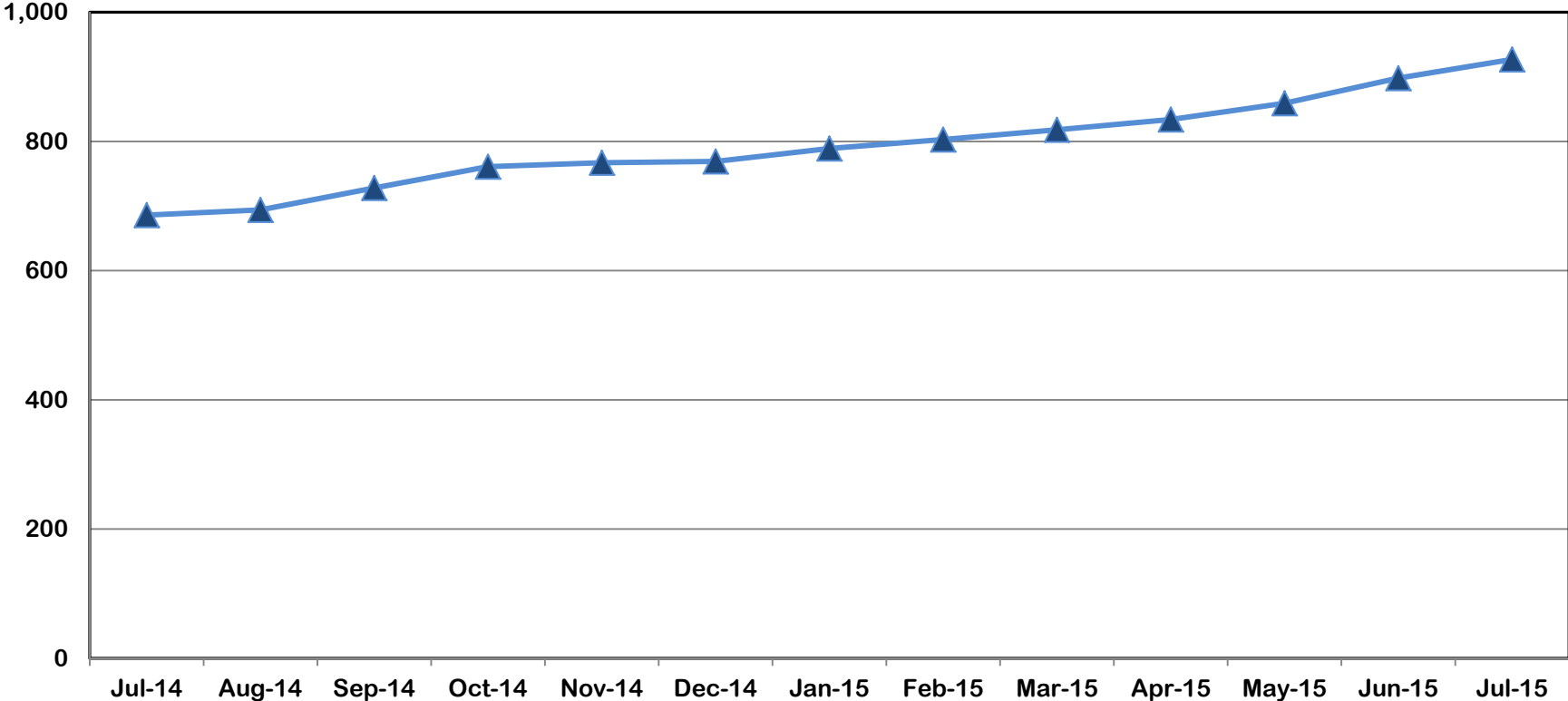
Jul-14	Aug-14	Sep-14	Oct-14	Nov-14	Dec-14	Jan-15	Feb-15	Mar-15	Apr-15	May-15	Jun-15	Jul-15
724	708	715	705	692	695	694	713	732	740	769	767	761



Division of Family and Children Services

Outcome VI: Children in DFCS Custody Under the Age of 18 (July 2014 – July 2015)

Region V



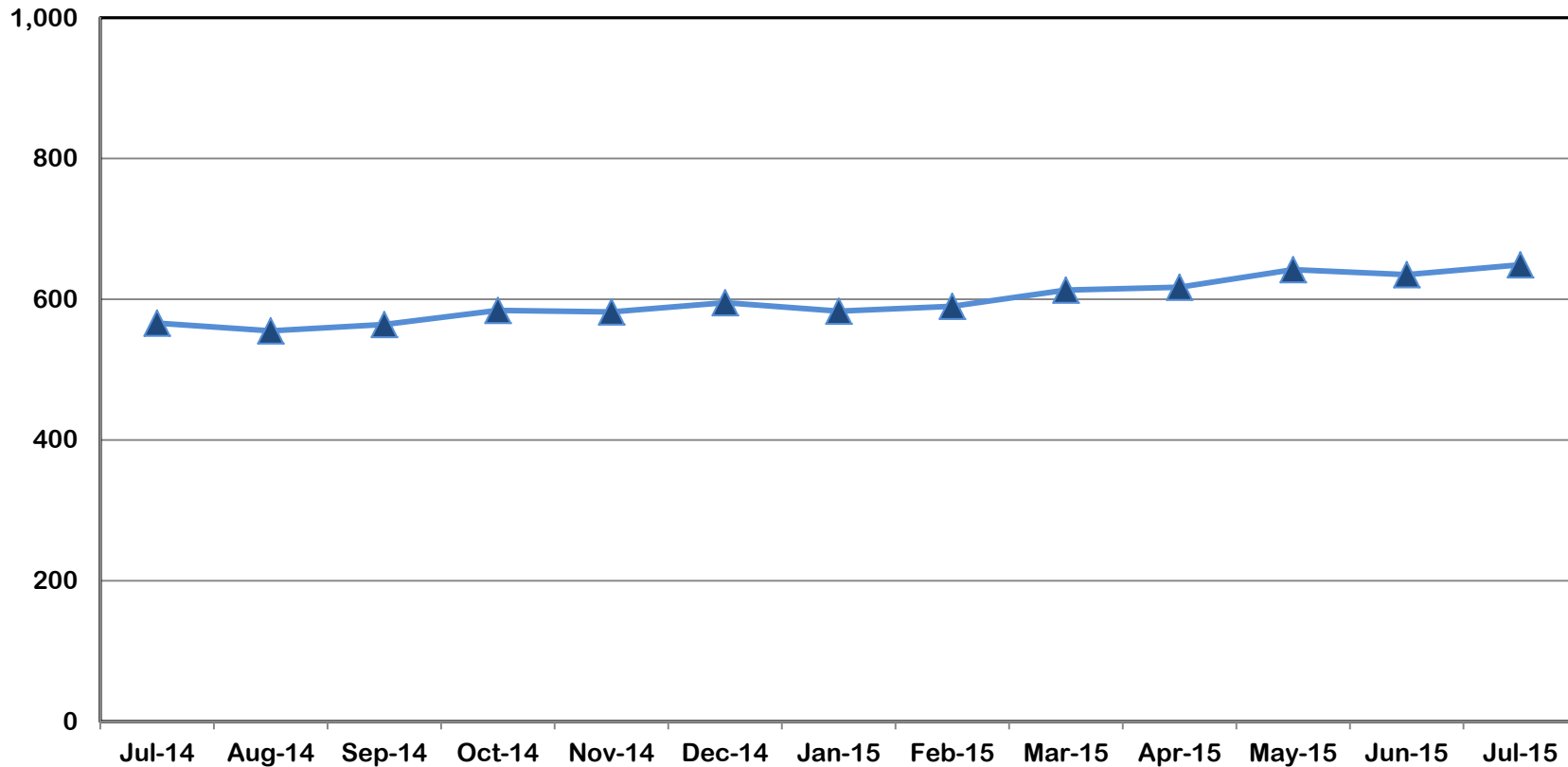
Jul-14	Aug-14	Sep-14	Oct-14	Nov-14	Dec-14	Jan-15	Feb-15	Mar-15	Apr-15	May-15	Jun-15	Jul-15
686	694	728	761	767	769	789	803	818	834	859	898	927



Division of Family and Children Services

Outcome VI: Children in DFCS Custody Under the Age of 18 (July 2014 – July 2015)

Region VI



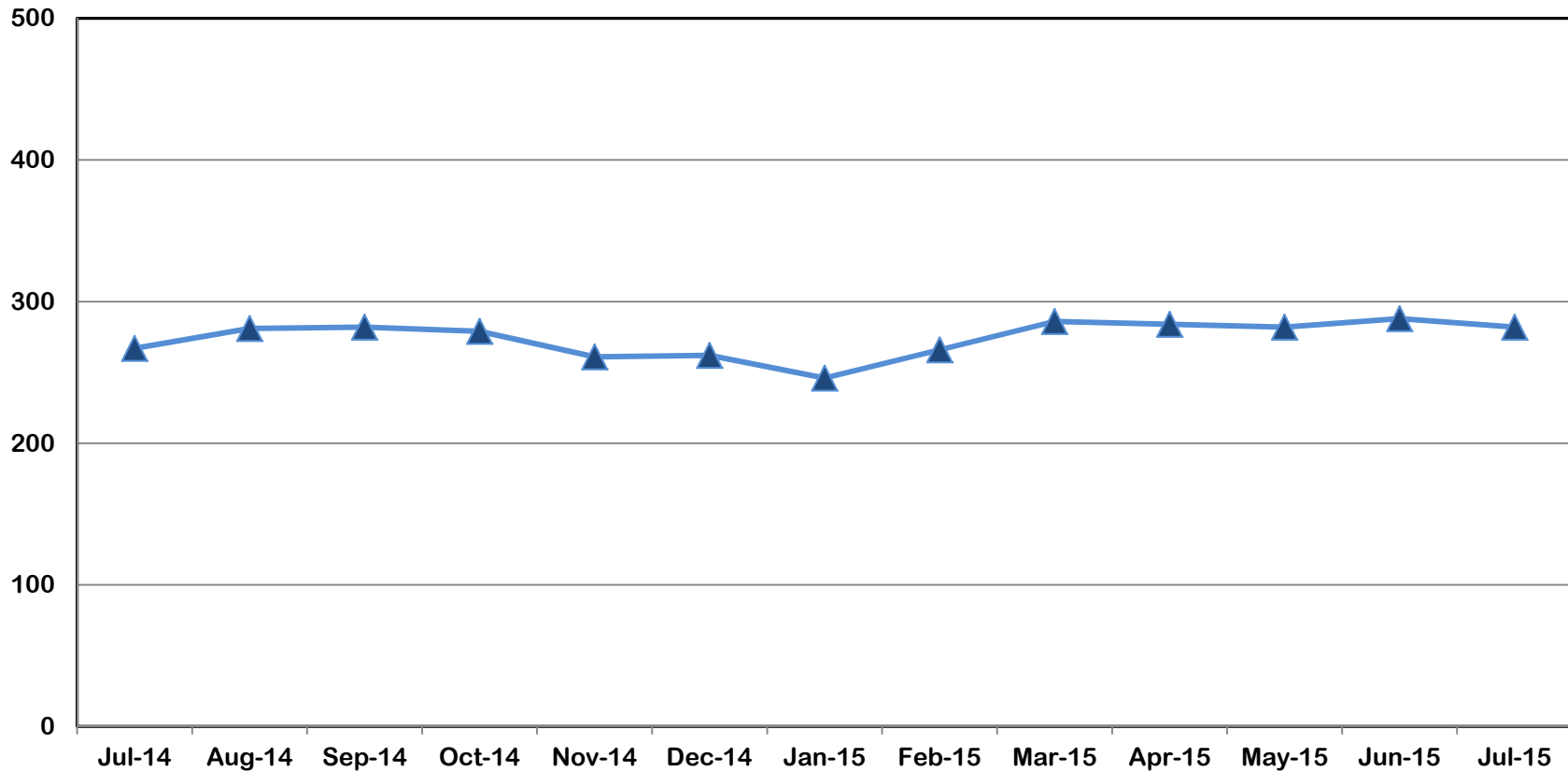
Jul-14	Aug-14	Sep-14	Oct-14	Nov-14	Dec-14	Jan-15	Feb-15	Mar-15	Apr-15	May-15	Jun-15	Jul-15
566	555	564	584	582	595	583	590	613	617	642	635	649



Division of Family and Children Services

Outcome VI: Children in DFCS Custody Under the Age of 18 (July 2014 – July 2015)

Region VII



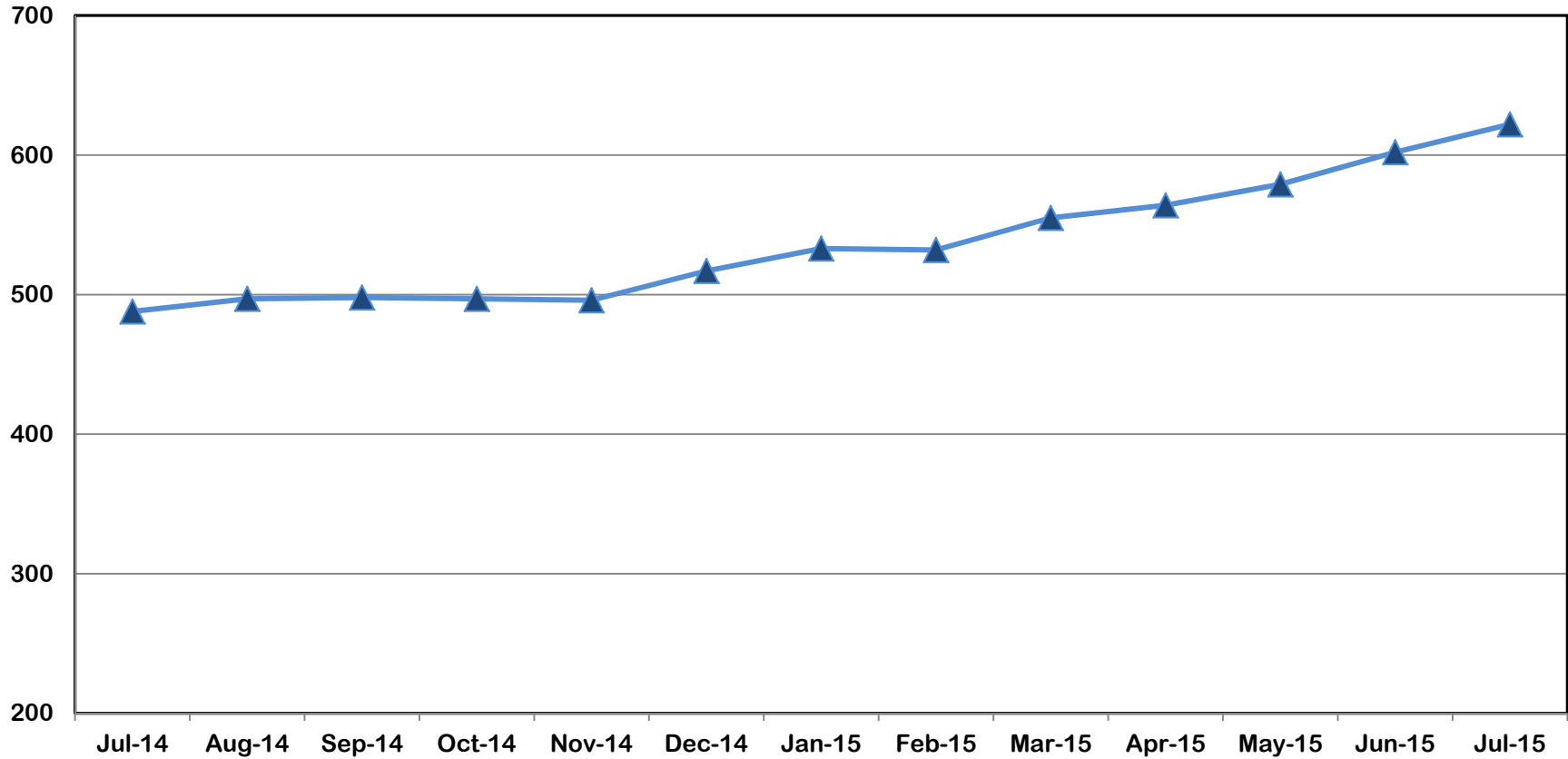
Jul-14	Aug-14	Sep-14	Oct-14	Nov-14	Dec-14	Jan-15	Feb-15	Mar-15	Apr-15	May-15	Jun-15	Jul-15
267	281	282	279	261	262	246	266	286	284	282	288	282



Division of Family and Children Services

Outcome VI: Children in DFCS Custody Under the Age of 18 (July 2014 – July 2015)

Region VIII



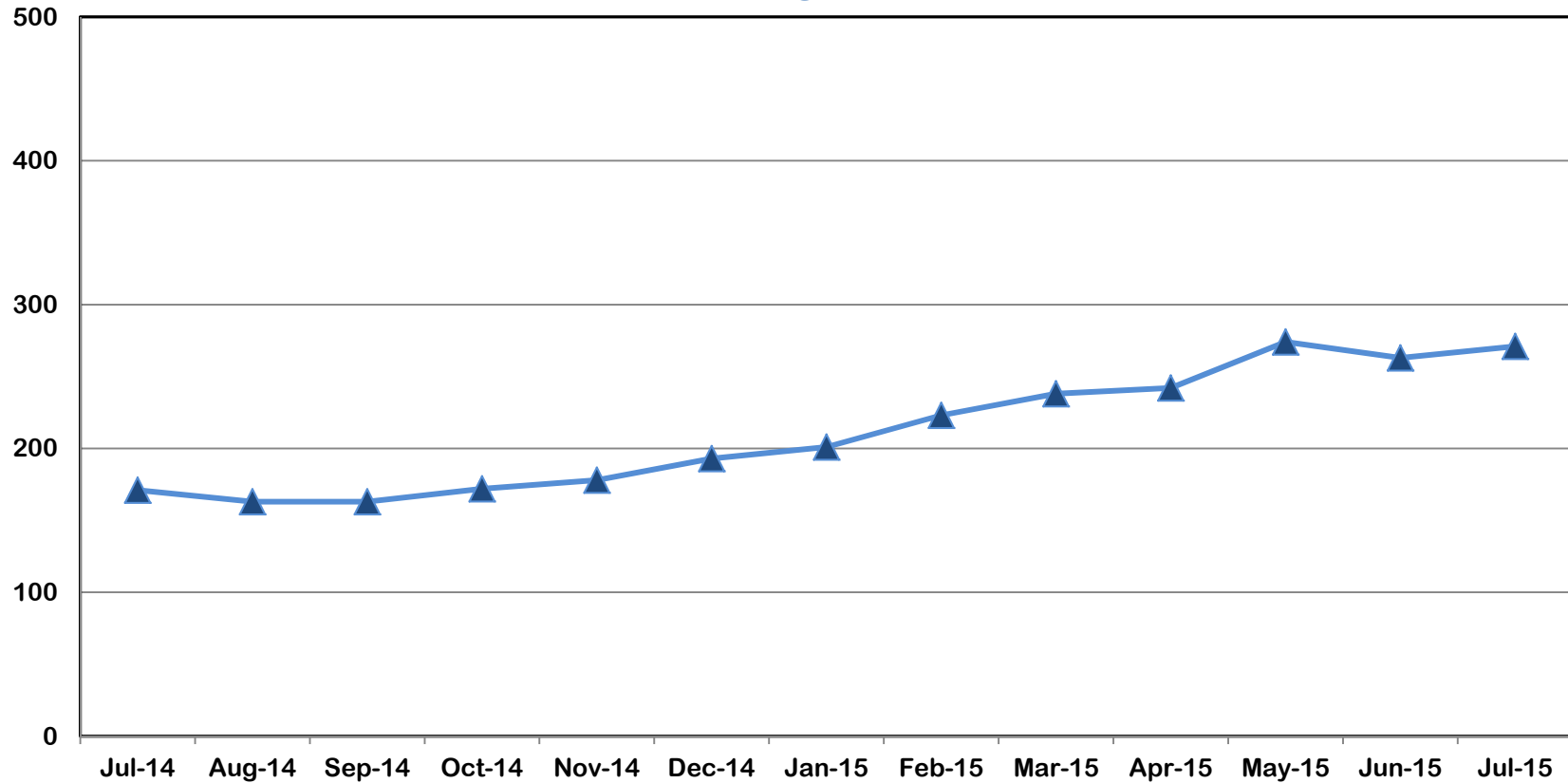
Jul-14	Aug-14	Sep-14	Oct-14	Nov-14	Dec-14	Jan-15	Feb-15	Mar-15	Apr-15	May-15	Jun-15	Jul-15
488	497	498	497	496	517	533	532	555	564	579	602	622



Division of Family and Children Services

Outcome VI: Children in DFCS Custody Under the Age of 18 (July 2014 – July 2015)

Region IX



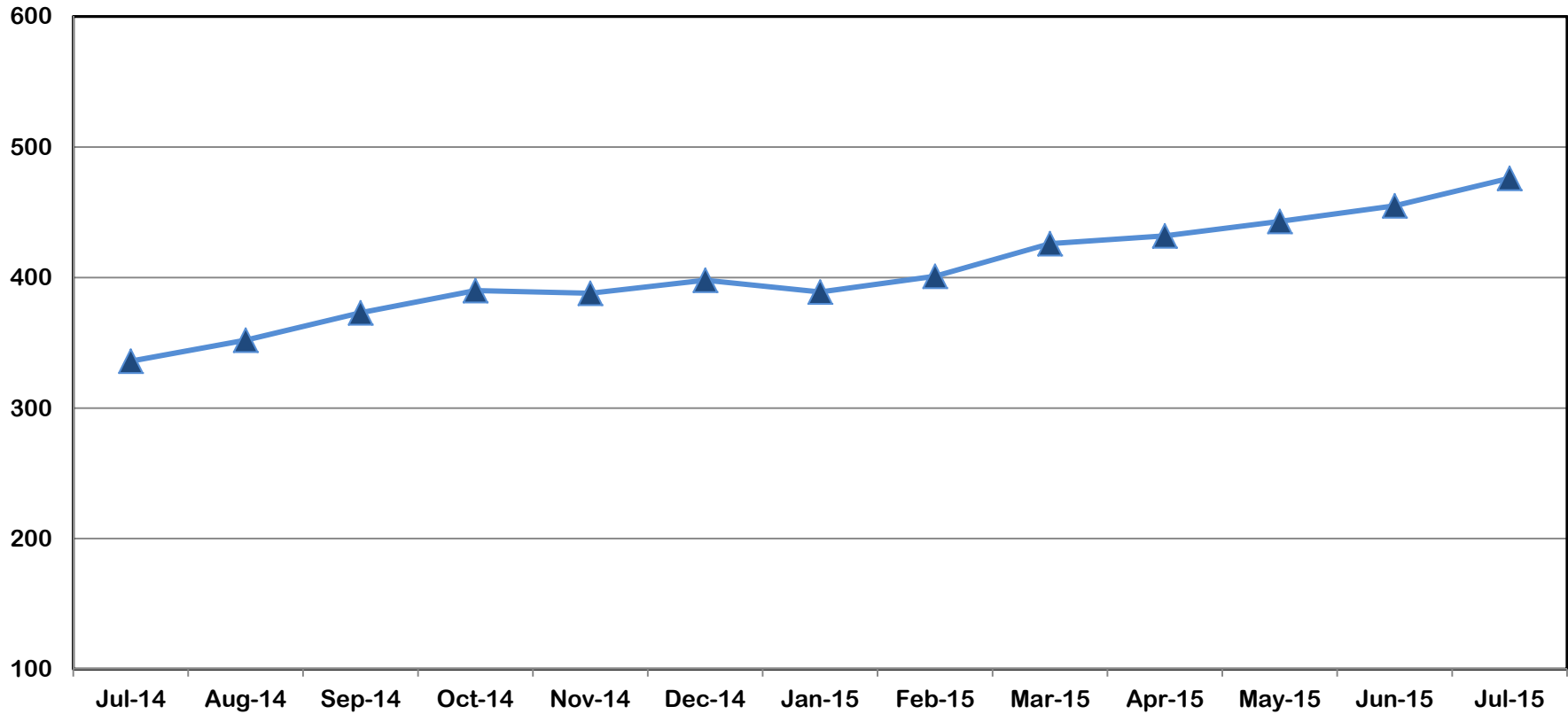
Jul-14	Aug-14	Sep-14	Oct-14	Nov-14	Dec-14	Jan-15	Feb-15	Mar-15	Apr-15	May-15	Jun-15	Jul-15
171	163	163	172	178	193	201	223	238	242	274	263	271



Division of Family and Children Services

Outcome VI: Children in DFCS Custody Under the Age of 18 (July 2014 – July 2015)

Region X



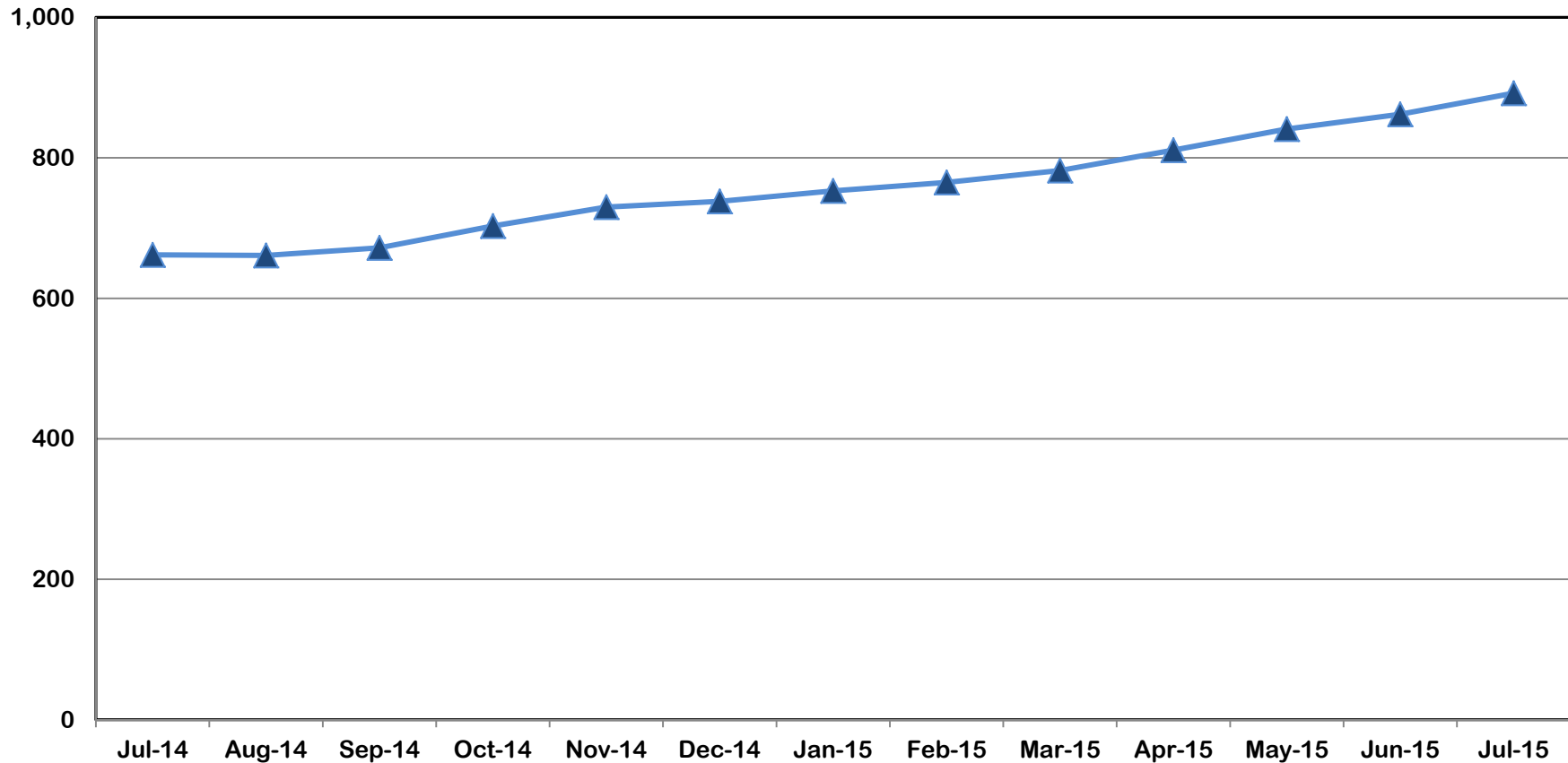
Jul-14	Aug-14	Sep-14	Oct-14	Nov-14	Dec-14	Jan-15	Feb-15	Mar-15	Apr-15	May-15	Jun-15	Jul-15
336	352	373	390	388	398	389	401	426	432	443	455	476



Division of Family and Children Services

Outcome VI: Children in DFCS Custody Under the Age of 18 (July 2014 – July 2015)

Region XI



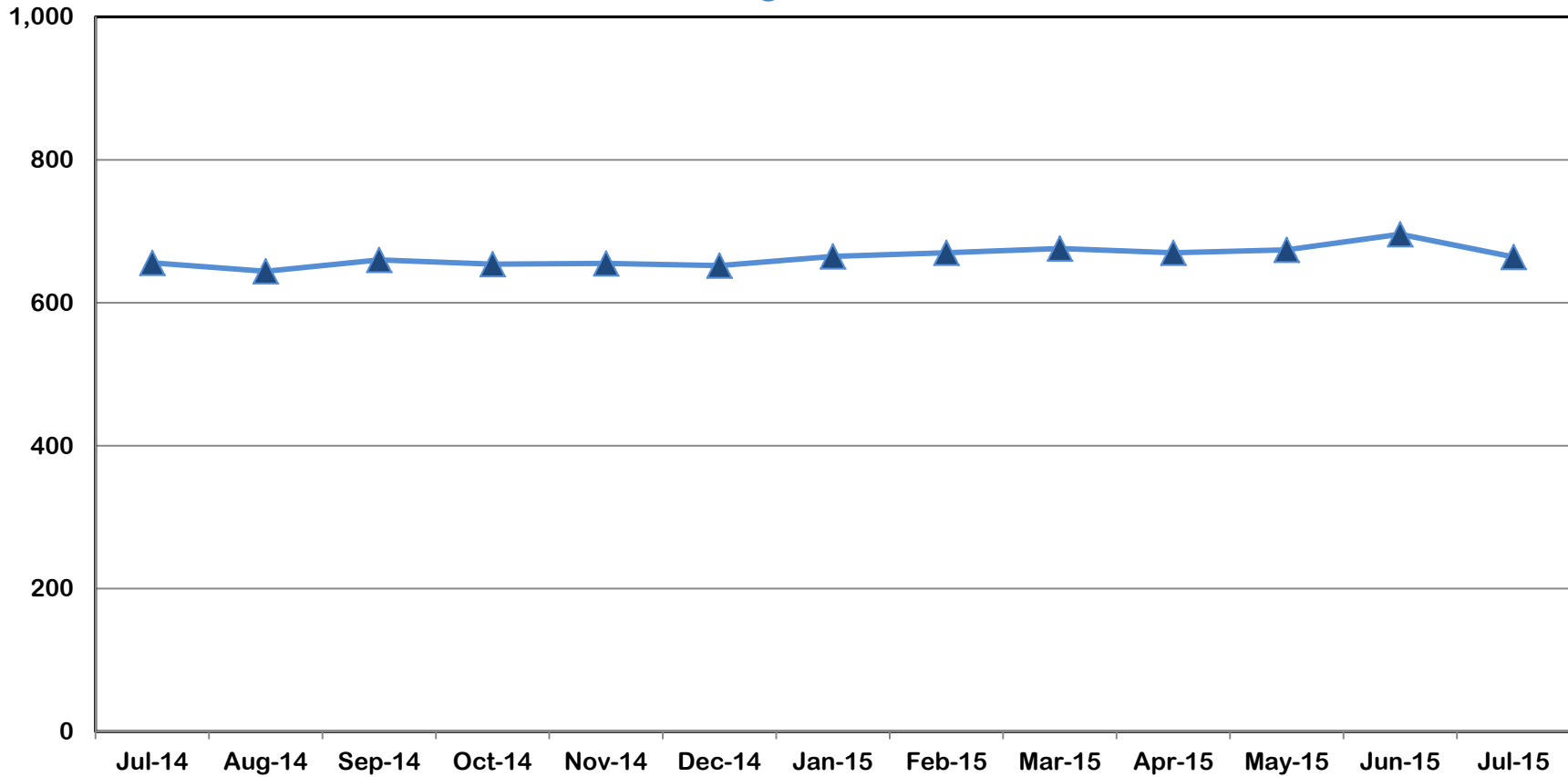
Jul-14	Aug-14	Sep-14	Oct-14	Nov-14	Dec-14	Jan-15	Feb-15	Mar-15	Apr-15	May-15	Jun-15	Jul-15
662	661	672	703	730	738	753	765	782	811	841	862	892



Division of Family and Children Services

Outcome VI: Children in DFCS Custody Under the Age of 18 (July 2014 – July 2015)

Region XII



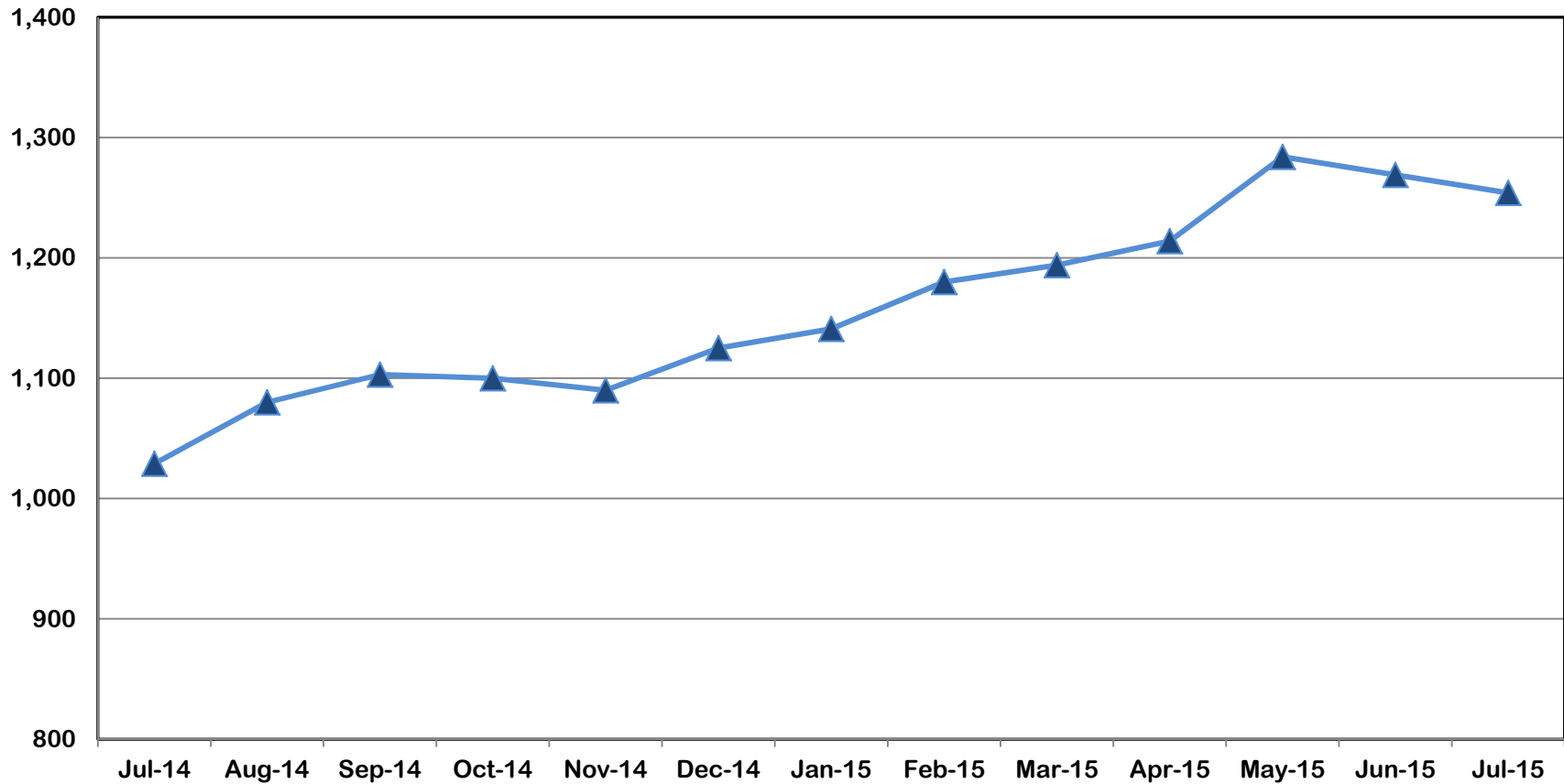
Jul-14	Aug-14	Sep-14	Oct-14	Nov-14	Dec-14	Jan-15	Feb-15	Mar-15	Apr-15	May-15	Jun-15	Jul-15
656	644	660	654	655	652	665	670	676	670	674	696	664



Division of Family and Children Services

Outcome VI: Children in DFCS Custody Under the Age of 18 (July 2014 – July 2015)

Region XIII



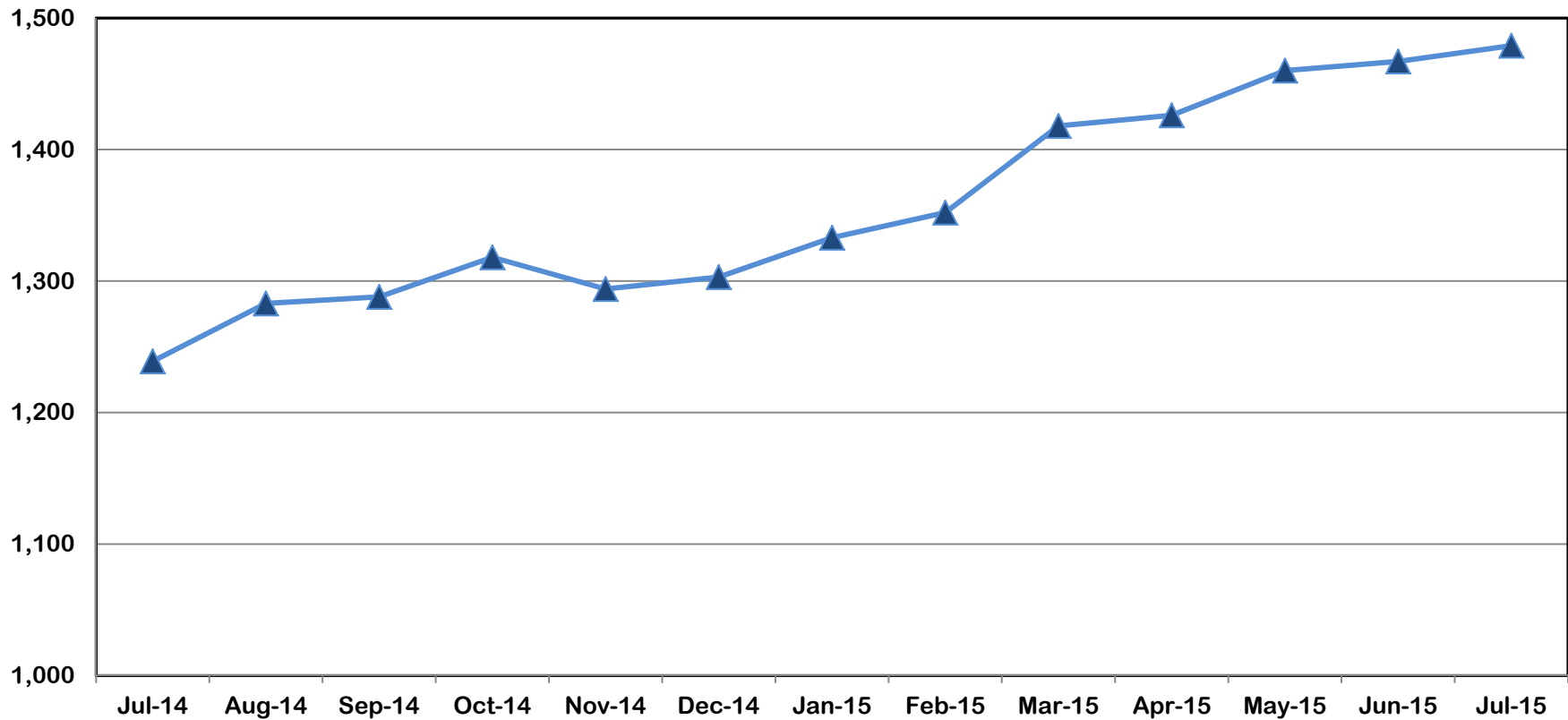
Jul-14	Aug-14	Sep-14	Oct-14	Nov-14	Dec-14	Jan-15	Feb-15	Mar-15	Apr-15	May-15	Jun-15	Jul-15
1,029	1,080	1,103	1,100	1,090	1,125	1,141	1,180	1,194	1,214	1,284	1,269	1,254



Division of Family and Children Services

Outcome VI: Children in DFCS Custody Under the Age of 18 (July 2014 – July 2015)

Region XIV



Jul-14	Aug-14	Sep-14	Oct-14	Nov-14	Dec-14	Jan-15	Feb-15	Mar-15	Apr-15	May-15	Jun-15	Jul-15
1,239	1,283	1,288	1,318	1,294	1,303	1,333	1,352	1,418	1,426	1,460	1,467	1,479



Division of Family and Children Services