



Georgia Division of Family and Children Services

Director

Bobby D. Cagle

Monthly Measures and Results for July 2015*

*(Reflects Safety Outcomes as of May 31, 2015 And
Permanency Outcomes as of June 30, 2015)

With Appendices



Division of Family and Children Services

Table of Contents

- Part I: Definitions And Data Sources contained in Report**
- Part II: Safety Outcomes**
- Part III: Permanency/Well-being Outcomes**
- Part IV: Appendices**
 - A. Disposition of Investigations by Percentage**
 - B. Regional Charts of Outcome V (Children in the Legal Custody of DFCS Under the Age of 18)**



Definitions and Data Sources

SAFETY: Children are first and foremost, protected from abuse and neglect.

Outcome I: Child Protective Services Cases

Count of unique CPS Investigations and Family Preservation (Ongoing) stages open at any point during the month. Includes all cases active at some time during the month. Outcome is calculated 45 days prior to the date of report.

Outcome 1A: Family Support Cases Only: Count of unique Family Support stages open at any point during the month.

Outcome 1B: Investigation Cases Only: Count of unique Investigation stages open at any point during the month.

Outcome 1C: Family Preservation Cases Only: Count of unique Family Preservation stages open at any point during the month.

Sources: SHINES

Outcome II: Recurrence of Substantiated Child Maltreatment

Of all the children who were victims of substantiated maltreatment in the first 6 months of the year, the percentage that had substantiated maltreatment within the following 6 months. Outcome is calculated 45 days prior to the date of report. Each month is calculated as a rolling calendar year. *National Standard: less than or equal to 5.40%*

Source: SHINES

Outcome III: Disposition of Child Abuse and Neglect Reports

Chart reflects the disposition of reports received in a particular month. Data includes count of Family Support, Substantiated Investigations, Unsubstantiated Investigations and Screen-outs. Outcome is calculated 45 days prior to the date of report.

Source: SHINES

Outcome IV: Subsequent Case-type of Investigations by Disposition

Chart reflects the disposition of investigations received in a particular month by the subsequent case type. Data includes count of Family Preservation (Substantiated and Unsubstantiated Open), Foster Care (Substantiated and Unsubstantiated Open), Substantiated and Unsubstantiated Closed. Outcome is calculated 45 days prior to the date of report.

Source: SHINES



Division of Family and Children Services

Definitions and Data Sources

PERMANENCY: Children have permanency and stability in their living situations.

Outcome V: Number of Child Placement Services Cases

Count of unique children who were involved in an open Foster Care or Adoption stage during the month. In placement services each child who is the principal (PC) is considered a case.

Source: SHINES

Outcome VI: Children in the Legal Custody of DFCS Under the Age of 18

Count of unique children who were in the legal custody of DFCS (17 years of age and under) at some point during the month, and those 18 years of age and older (Extended Youth Services). Excludes Aftercare, ICPC, Placement services to parents, and Boarding County.

Source: SHINES

Outcome VI - A: Children in the Legal Custody of DFCS Under the Age of 18 (Regional)

Count of unique children who were in the legal custody of DFCS (17 years of age and under) at some point during the month, and those 18 years of age and older (Extended Youth Services). Excludes Aftercare, ICPC, Placement services to parents, and Boarding County.

Source: SHINES

Outcome VII: Comparison of Foster Care Entries & Exits

Number of children who have entered foster care and number of children who have exited foster care during the month. Total children at end of month show the number of children on the last day of the month.

Source: SHINES

Outcome VIII: Foster Care Re-entries

Of all the children who entered foster care, the percentage that were discharged from a prior episode of foster care within 12 months of the current foster care placement. National Standard: less than or equal to 8.60%.

Source: SHINES

Outcome IX: Foster Care Length of Stay

Percentage of children by number of months in foster care during each month.

Source: SHINES



Definitions and Data Sources

PERMANENCY cont'd: Children have permanency and stability in their living situations.

Outcome X: Length of Time to Achieve Reunification

Percentage of children who exited care during the month through reunification with their family that reunified in less than 12 months from the date of their removal. National Standard: greater than or equal to 76.20%

Source: SHINES

Outcome XI: Children Placed with Relatives

Of all children in DFCS custody, the percentage that are placed with a relative or a relative foster home.

State Target: greater than or equal to 30.00%

Source: SHINES

Outcome XII: Extended Youth Services

Number of children ages 18 – 21 who remained in the custody of DFCS beyond their birth month.

Source: SHINES

Outcome XIII: Adoptions Finalized

The number of children whose adoption was finalized within each month..

Source: SHINES

Outcome XIV: Stability Performance Coefficient (Number of Moves/Number of Days in Custody * 1000)

A calculated value based upon the ACF CFPS Round 3 which is part of Program Improvement. It is calculated from a rolling 12 month population of the entry cohort where the child remained in custody for over 8 days and was not 18 on the date of removal. The ACF Target is: 4.26 to avoid PIP. Georgia's Program Improvement Plan Target is: 5.54.

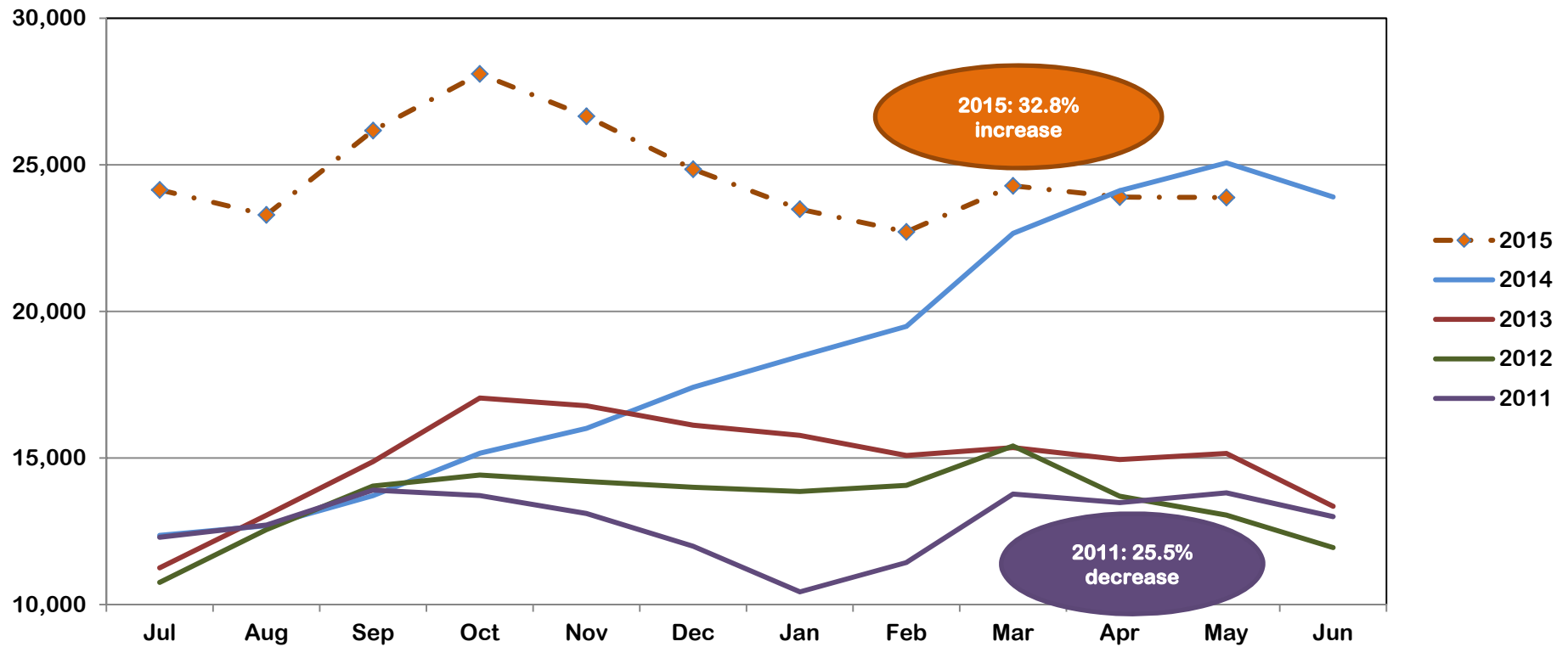
Source: SHINES



*may vary from month to month due to 13 month data trends being re-run over the time span for the various
his report.*

Division of Family and Children Services

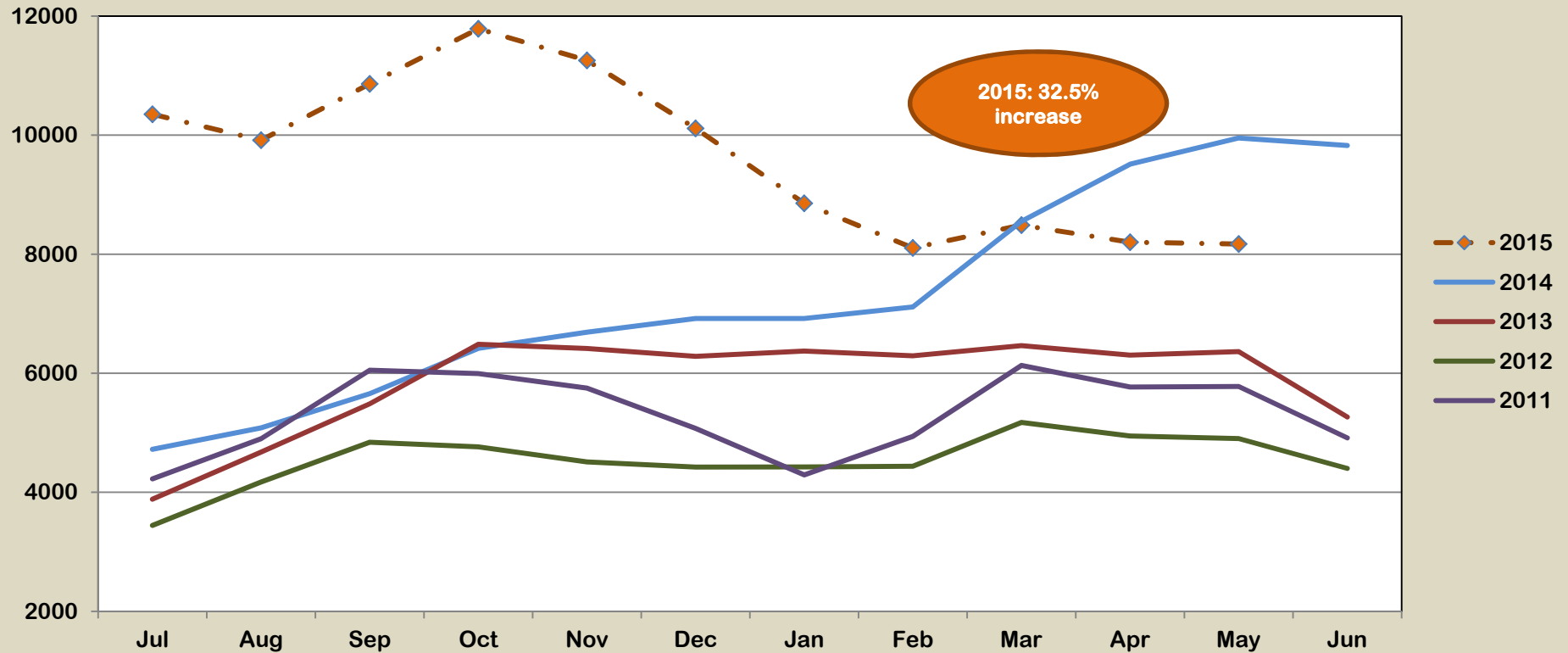
Outcome I: Child Protective Services Cases (May 2015)



State FY	Jul	Aug	Sep	Oct	Nov	Dec	Jan	Feb	Mar	Apr	May	Jun	Average	% Increase
2015	24,149	23,293	26,172	28,104	26,660	24,852	23,490	22,713	24,285	23,902	23,889		22,794	32.8%
2014	12,363	12,693	13,715	15,162	16,008	17,416	18,470	19,491	22,662	24,120	25,071	23,905	17,161	23.4%
2013	11,256	13,050	14,878	17,050	16,783	16,119	15,773	15,088	15,355	14,951	15,157	13,355	13,910	10.2%
2012	10,761	12,556	14,045	14,422	14,202	14,002	13,860	14,070	15,411	13,697	13,055	11,944	12,618	5.4%
2011	12,296	12,715	13,907	13,723	13,111	11,993	10,435	11,437	13,771	13,482	13,812	13,002	11,977	-25.5%



Outcome IA: Child Protective Services Cases Family Support Cases Only (May 2015)

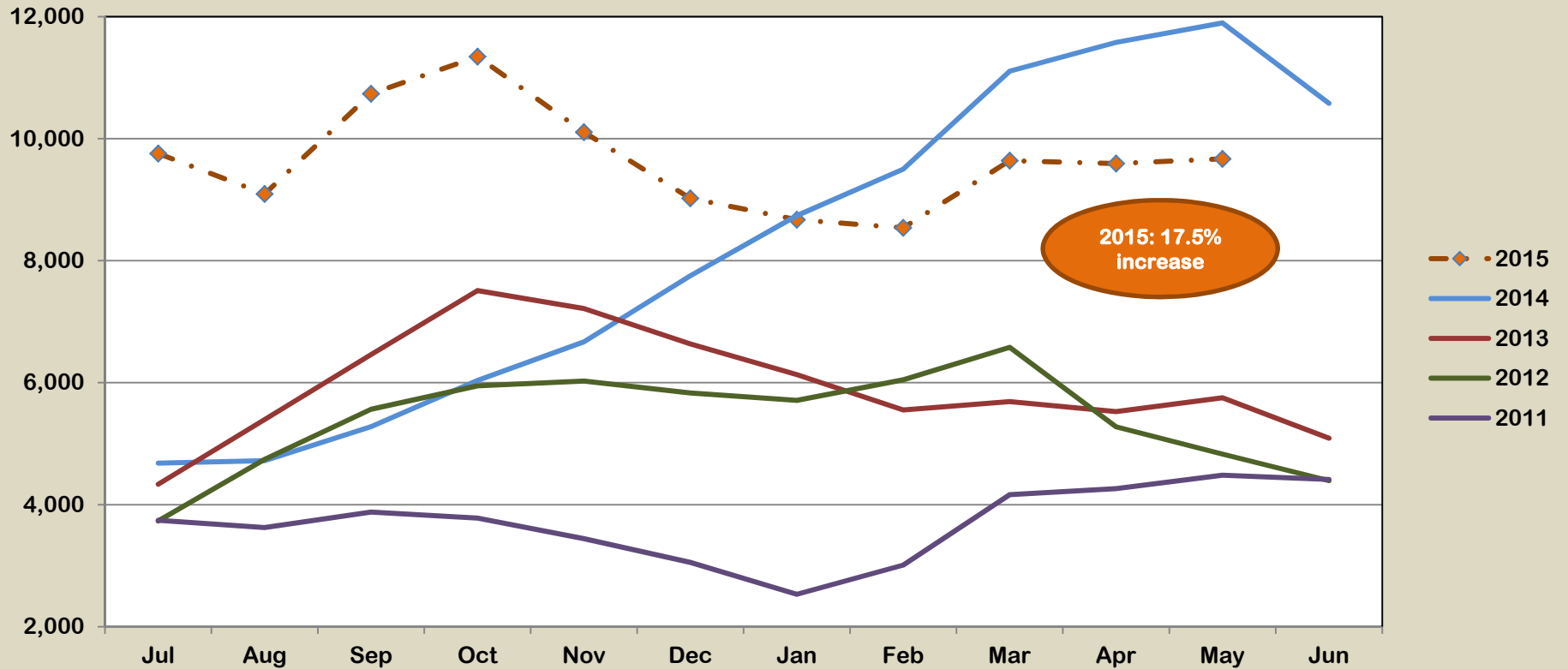


State FY	Jul	Aug	Sep	Oct	Nov	Dec	Jan	Feb	Mar	Apr	May	Jun	Average	% Increase
2015	10,351	9,916	10,862	11,787	11,255	10,113	8,856	8,105	8,488	8,201	8,171		9,646	32.5%
2014	4,723	5,083	5,658	6,418	6,690	6,919	6,919	7,113	8,552	9,511	9,951	9,826	7,280	24.3%
2013	3,883	4,674	5,487	6,488	6,417	6,284	6,374	6,292	6,463	6,304	6,364	5,265	5,858	29.1%
2012	3,443	4,173	4,842	4,764	4,510	4,423	4,425	4,437	5,174	4,945	4,903	4,402	4,537	-14.7%
2011	4,225	4,901	6,052	5,995	5,750	5,074	4,292	4,940	6,131	5,769	5,779	4,915	5,319	-13.3%



Division of Family and Children Services

Outcome IB: Child Protective Services Cases Investigations Only (May 2015)

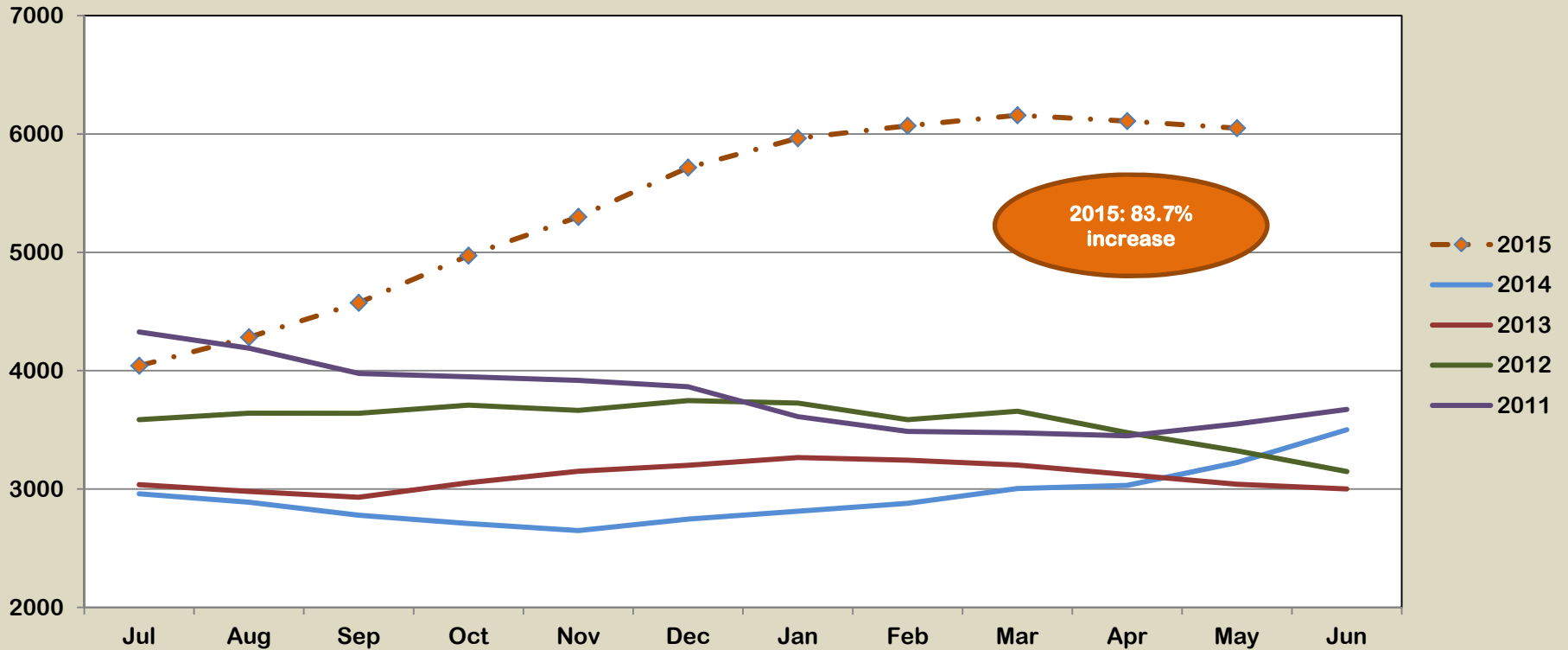


State FY	Jul	Aug	Sep	Oct	Nov	Dec	Jan	Feb	Mar	Apr	May	Jun	Average	% Increase
2015	9,756	9,094	10,736	11,345	10,106	9,022	8,670	8,539	9,639	9,592	9,668		9,652	17.5%
2014	4,680	4,721	5,278	6,035	6,669	7,751	8,738	9,499	11,106	11,578	11,896	10,578	8,211	38.2%
2013	4,336	5,396	6,460	7,509	7,216	6,635	6,133	5,552	5,689	5,525	5,753	5,089	5,941	10.2%
2012	3,732	4,742	5,563	5,949	6,027	5,832	5,709	6,047	6,579	5,276	4,829	4,394	5,390	45.7%
2011	3,744	3,624	3,878	3,780	3,443	3,055	2,531	3,010	4,165	4,264	4,483	4,414	3,699	-17.6%



Division of Family and Children Services

Outcome IC: Child Protective Services Cases Family Preservations Only (May 2015)

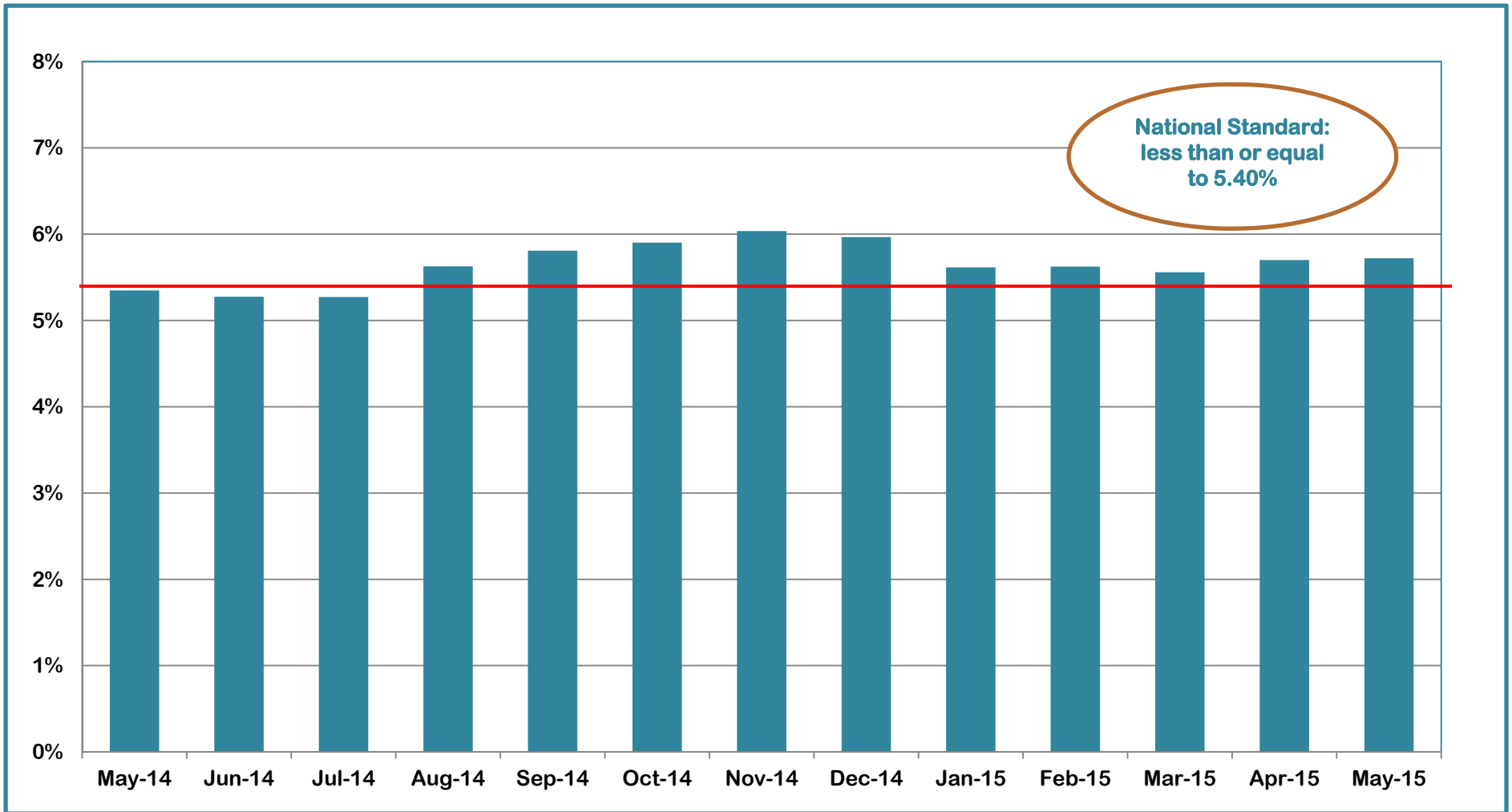


State FY	Jul	Aug	Sep	Oct	Nov	Dec	Jan	Feb	Mar	Apr	May	Jun	Average	% Increase
2015	4,042	4,283	4,574	4,972	5,299	5,717	5,964	6,069	6,158	6,109	6,050		5,385	83.7%
2014	2,960	2,889	2,779	2,709	2,649	2,746	2,813	2,879	3,004	3,031	3,224	3,501	2,932	-5.5%
2013	3,037	2,980	2,931	3,053	3,150	3,200	3,266	3,244	3,203	3,122	3,040	3,001	3,102	-13.2%
2012	3,586	3,641	3,640	3,709	3,665	3,747	3,726	3,586	3,658	3,476	3,323	3,148	3,575	-5.6%
2011	4,327	4,190	3,977	3,948	3,918	3,864	3,612	3,487	3,475	3,449	3,550	3,673	3,789	-30.4%



Division of Family and Children Services

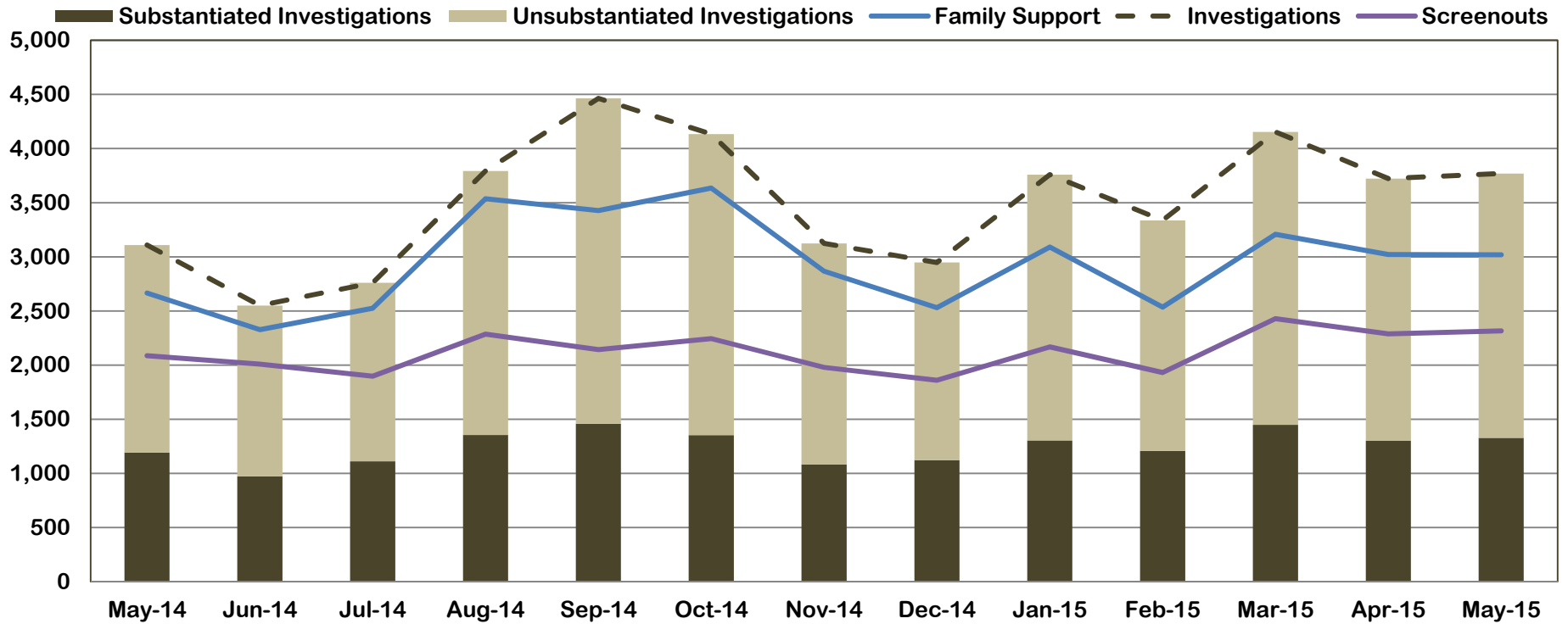
Outcome II: Recurrence of Substantiated Child Maltreatment (May 2014 – May 2015)



May-14	Jun-14	Jul-14	Aug-14	Sep-14	Oct-14	Nov-14	Dec-14	Jan-15	Feb-15	Mar-15	Apr-15	May-15
5.35%	5.28%	5.27%	5.63%	5.81%	5.90%	6.04%	5.97%	5.62%	5.62%	5.56%	5.70%	5.72%



Outcome III: Disposition of Child Abuse and Neglect Reports (May 2014 - May 2015)

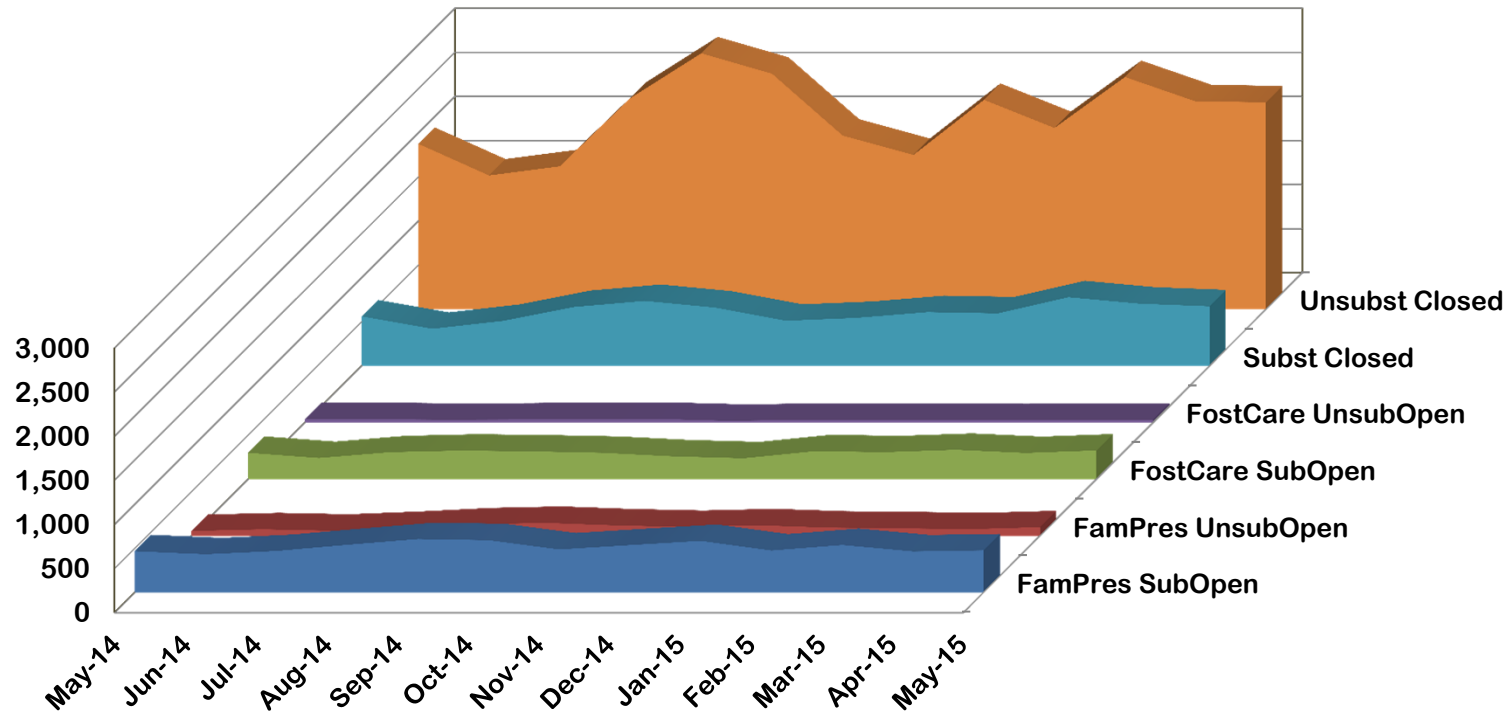


	May-14	Jun-14	Jul-14	Aug-14	Sep-14	Oct-14	Nov-14	Dec-14	Jan-15	Feb-15	Mar-15	Apr-15	May-15
Family Support	2,666	2,328	2,526	3,537	3,427	3,635	2,867	2,531	3,090	2,536	3,208	3,022	3,019
Screenouts	2,087	2,009	1,898	2,286	2,143	2,245	1,979	1,860	2,169	1,932	2,429	2,289	2,316
Investigations	3,109	2,550	2,760	3,793	4,464	4,134	3,124	2,948	3,759	3,337	4,154	3,723	3,769
Substantiated Investigations	1,193	972	1,112	1,355	1,459	1,354	1,081	1,123	1,305	1,208	1,449	1,303	1,328
Unsubstantiated Investigations	1,916	1,578	1,648	2,438	3,005	2,780	2,043	1,825	2,454	2,129	2,705	2,420	2,441



Division of Family and Children Services

Outcome IV: Subsequent Case-Type of Investigations by Disposition (May 2014 - May 2015)

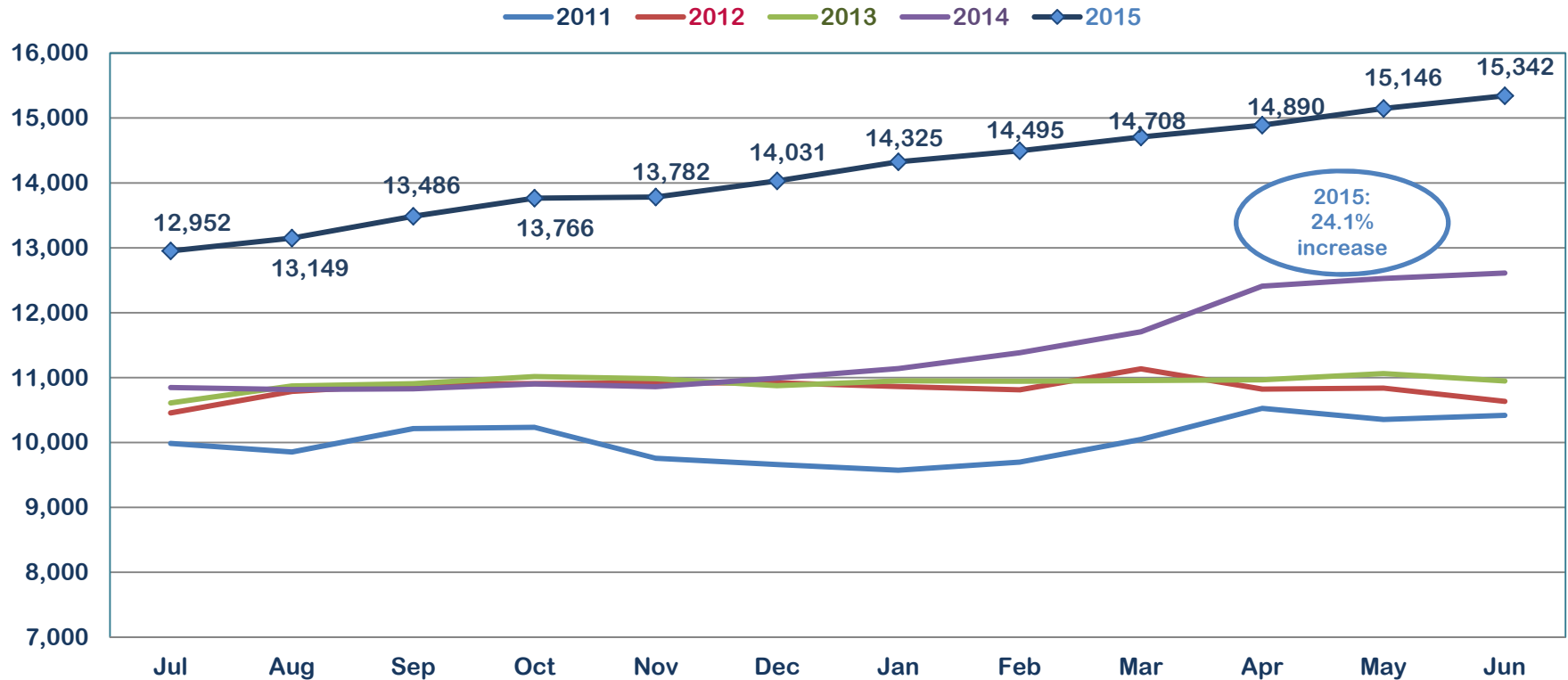


	May-14	Jun-14	Jul-14	Aug-14	Sep-14	Oct-14	Nov-14	Dec-14	Jan-15	Feb-15	Mar-15	Apr-15	May-15
FamPres SubOpen	466	432	469	539	604	591	486	536	583	474	537	464	476
FamPres UnsubOpen	54	73	57	89	129	146	117	100	119	92	84	74	97
FostCare SubOpen	298	239	305	323	314	298	258	236	316	305	332	296	325
FostCare UnsubOpen	39	37	31	34	41	40	19	30	30	26	25	29	31
Subst Closed	561	420	510	667	736	660	511	544	609	595	778	705	675
Unsubst Closed	1,876	1,517	1,621	2,395	2,903	2,671	1,969	1,750	2,375	2,056	2,634	2,358	2,347



Division of Family and Children Services

Outcome V: Number of Children in Placement Services (State Fiscal Year 2015)

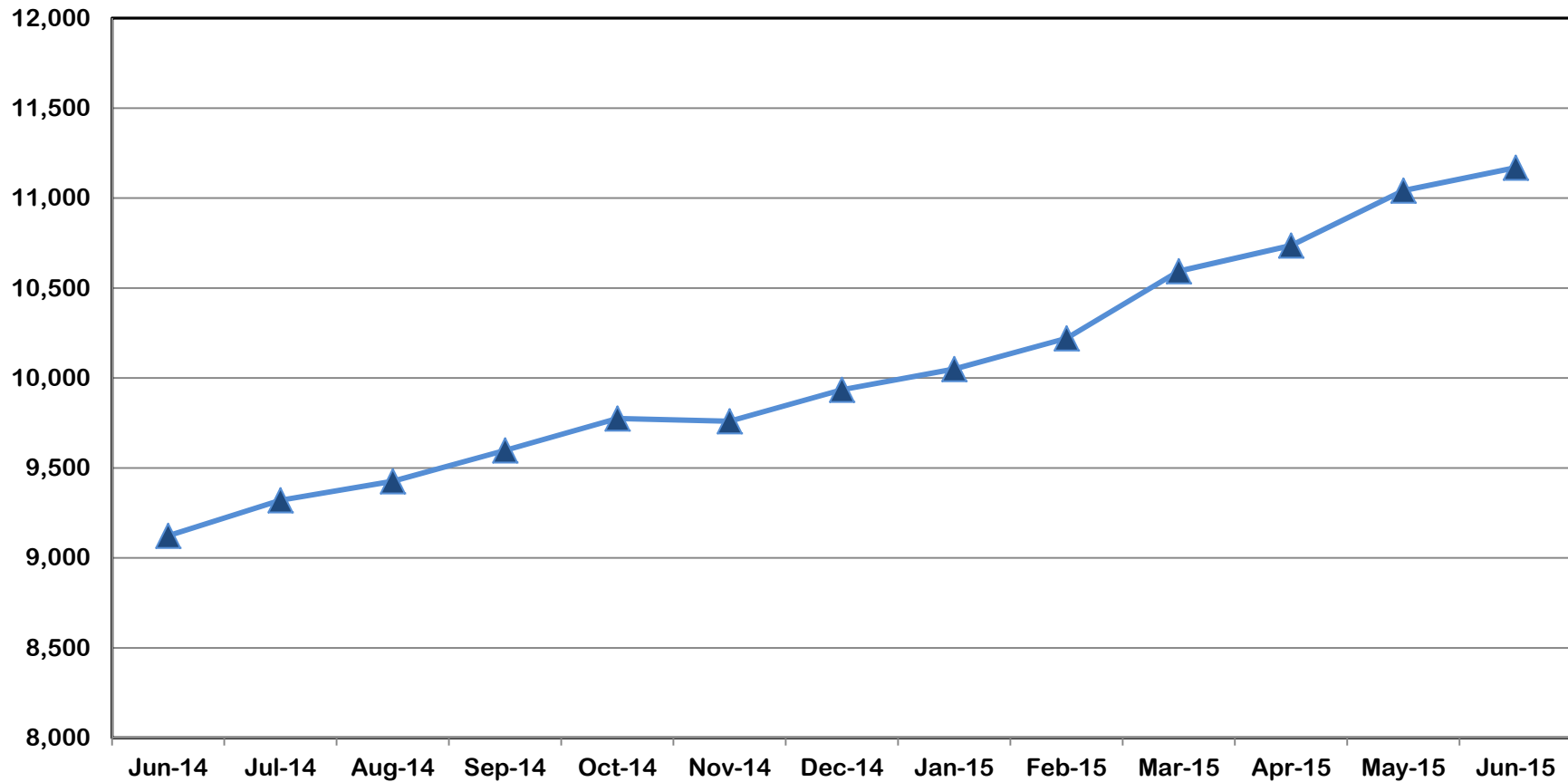


State FY	Jul	Aug	Sep	Oct	Nov	Dec	Jan	Feb	Mar	Apr	May	Jun	Average	% Increase
2015	12,952	13,149	13,486	13,766	13,782	14,031	14,325	14,495	14,708	14,890	15,146	15,342	14,173	24.1%
2014	10,847	10,817	10,828	10,903	10,861	10,992	11,139	11,384	11,707	12,410	12,527	12,611	11,419	4.5%
2013	10,610	10,871	10,907	11,016	10,984	10,875	10,951	10,944	10,955	10,966	11,063	10,948	10,924	0.8%
2012	10,457	10,788	10,893	10,908	10,917	10,919	10,863	10,813	11,135	10,823	10,839	10,634	10,832	8.0%
2011	9,985	9,853	10,215	10,234	9,758	9,660	9,572	9,698	10,047	10,526	10,355	10,419	10,027	--



Division of Family and Children Services

Outcome VI: Children in DFCS Custody Under the Age of 18 (June 2014 – June 2015)

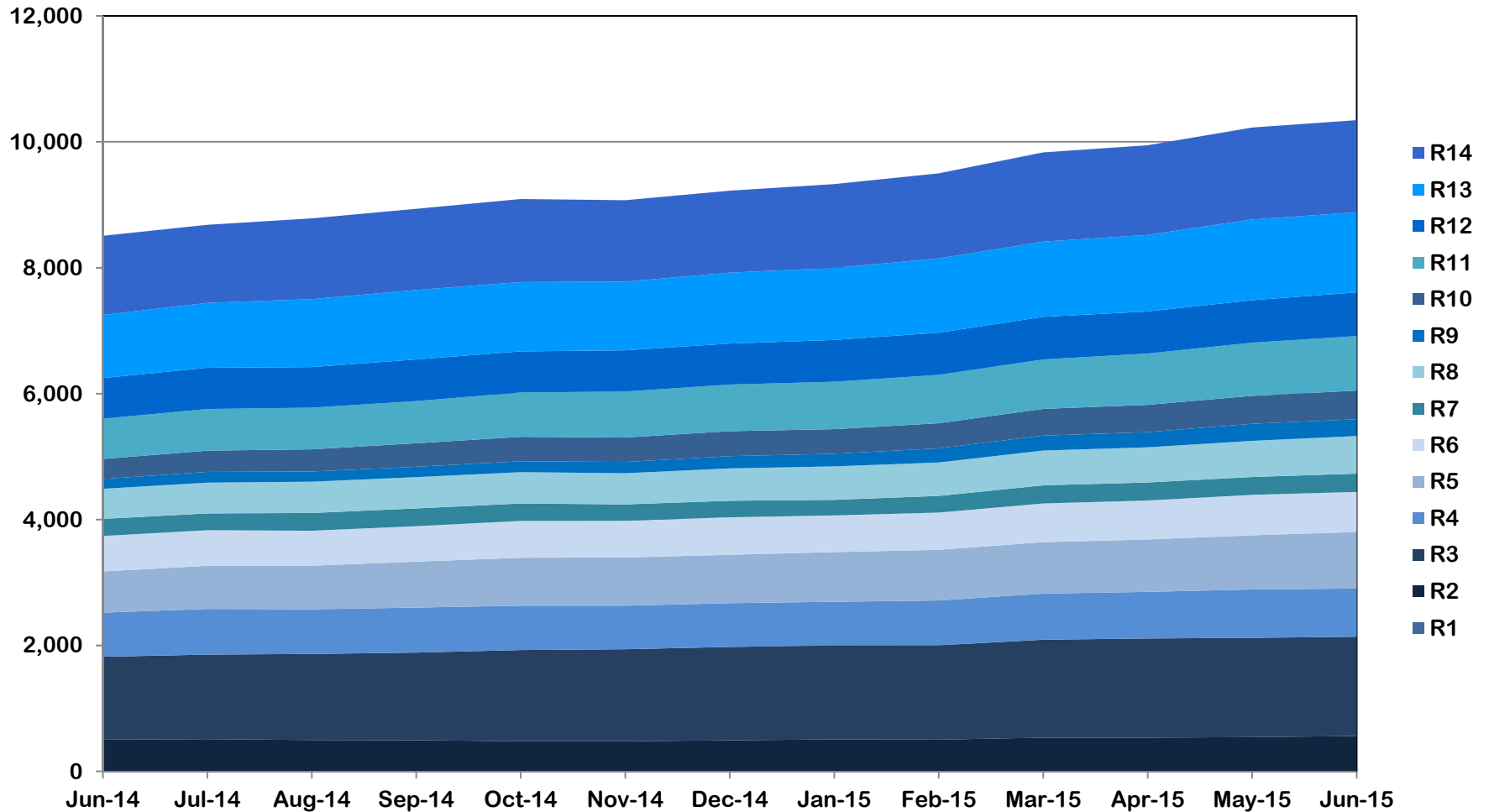


Jun-14	Jul-14	Aug-14	Sep-14	Oct-14	Nov-14	Dec-14	Jan-15	Feb-15	Mar-15	Apr-15	May-15	Jun-15
9,123	9,321	9,426	9,598	9,775	9,760	9,935	10,050	10,221	10,594	10,736	11,042	11,169



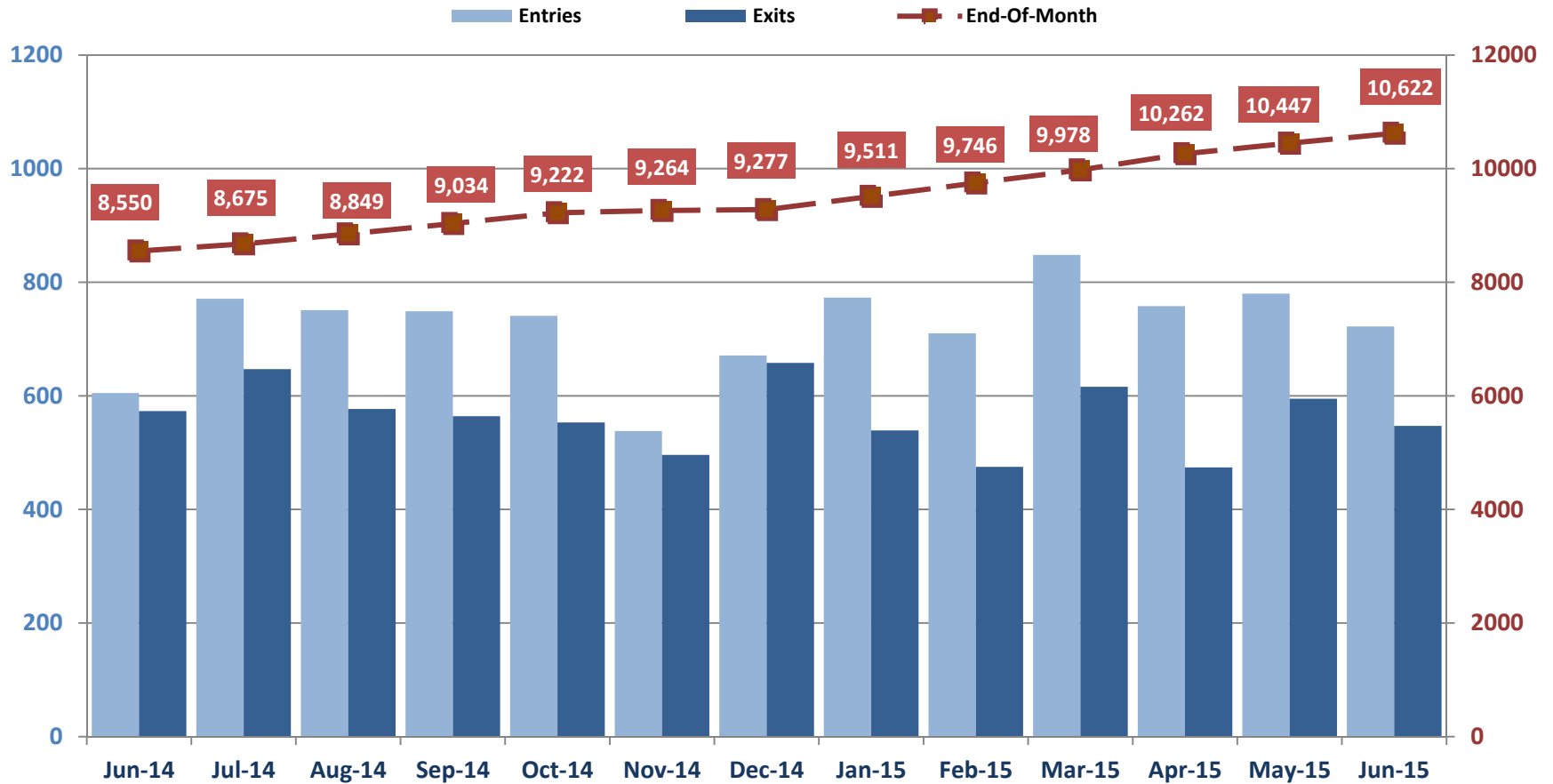
Division of Family and Children Services

Outcome VI-A: Children in DFCS Custody Under the Age of 18 -(Regional) (June 2014 – June 2015)



Division of Family and Children Services

Outcome VI: Comparison of Foster Care Entries and Exits (June 2014 – June 2015)

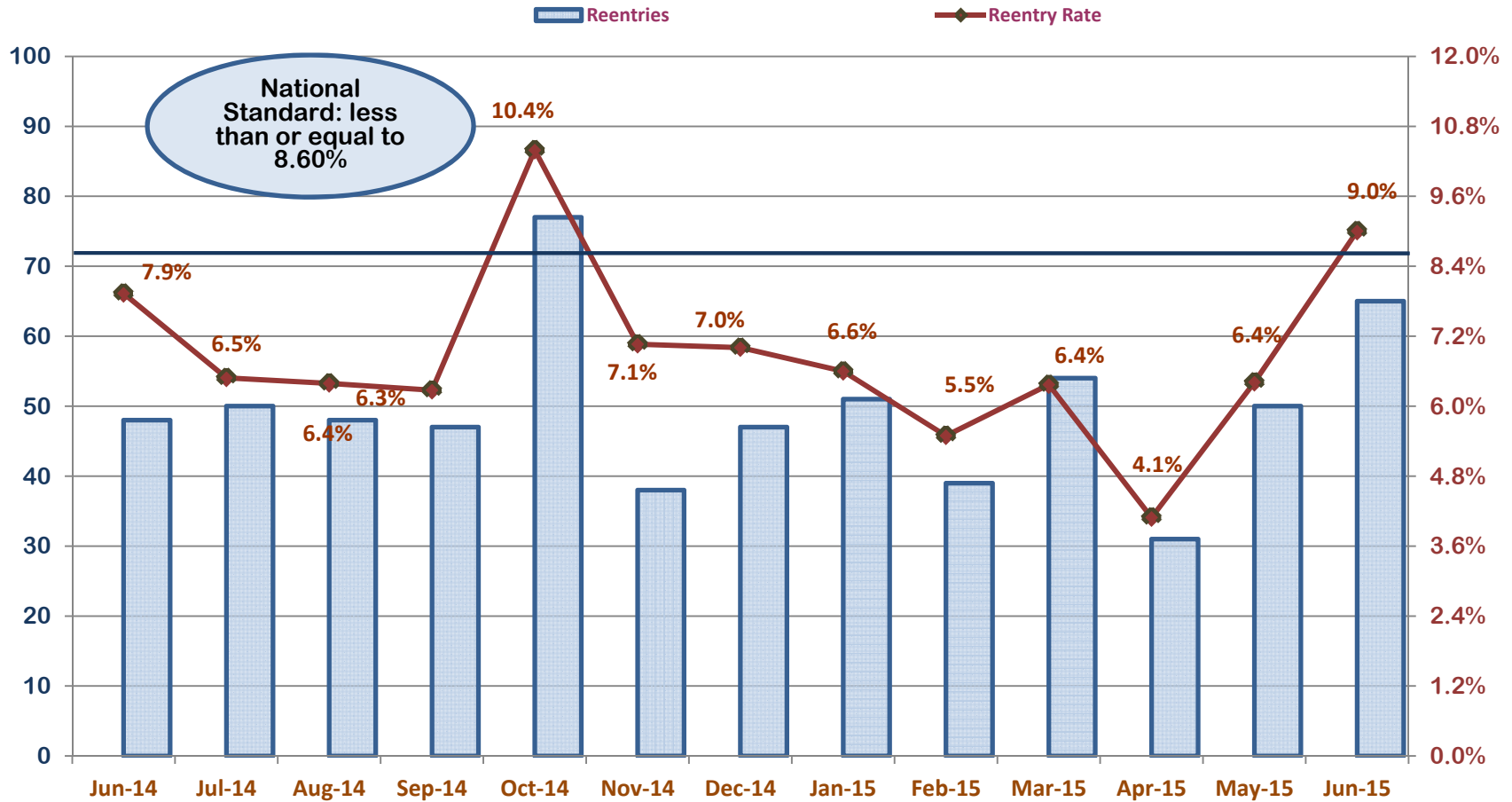


Jun-14	Jul-14	Aug-14	Sep-14	Oct-14	Nov-14	Dec-14	Jan-15	Feb-15	Mar-15	Apr-15	May-15	Jun-15
605	771	751	749	741	538	671	773	710	848	758	780	722
573	647	577	564	553	496	658	539	475	616	474	595	547



Division of Family and Children Services

Outcome VII: Foster Care Re-Entry Rate (June 2014 – June 2015)

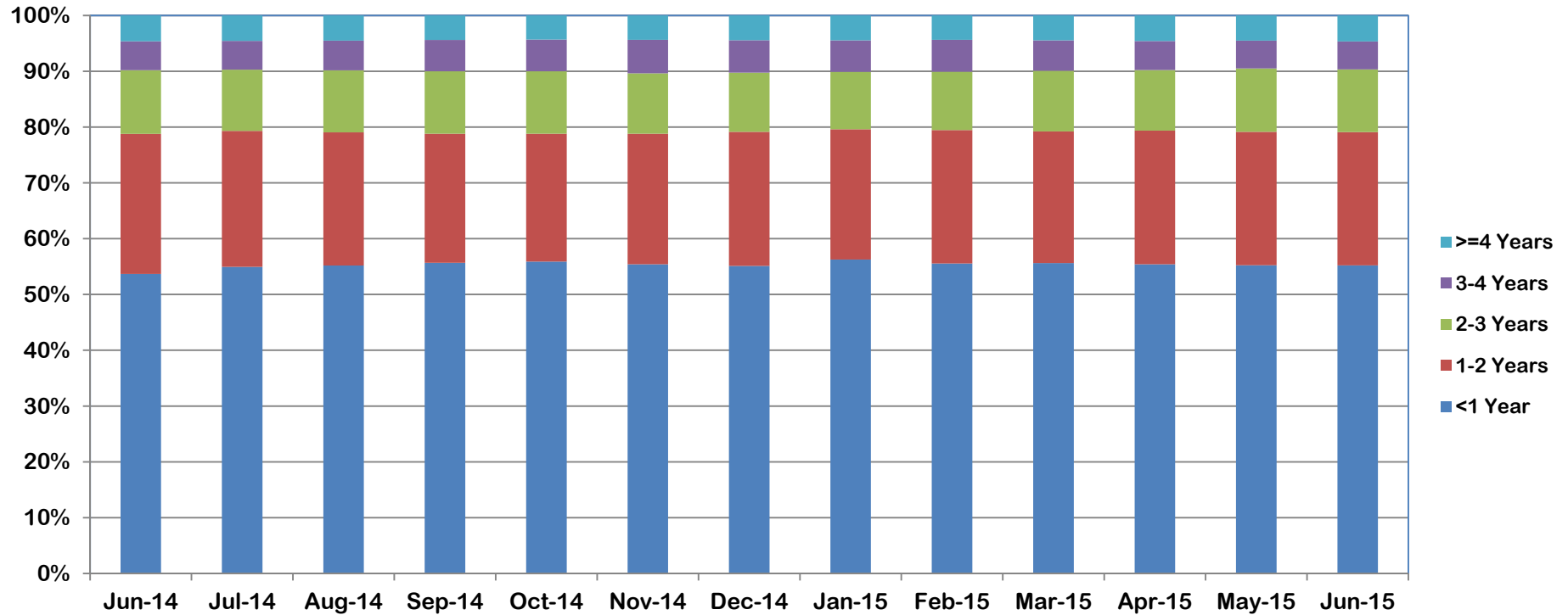


Jun-14	Jul-14	Aug-14	Sep-14	Oct-14	Nov-14	Dec-14	Jan-15	Feb-15	Mar-15	Apr-15	May-15	Jun-15
7.9%	6.5%	6.4%	6.3%	10.4%	7.1%	7.0%	6.6%	5.5%	6.4%	4.1%	6.4%	9.0%



Division of Family and Children Services

Outcome VIII: Foster Care Length of Stay (June 2014 – June 2015)

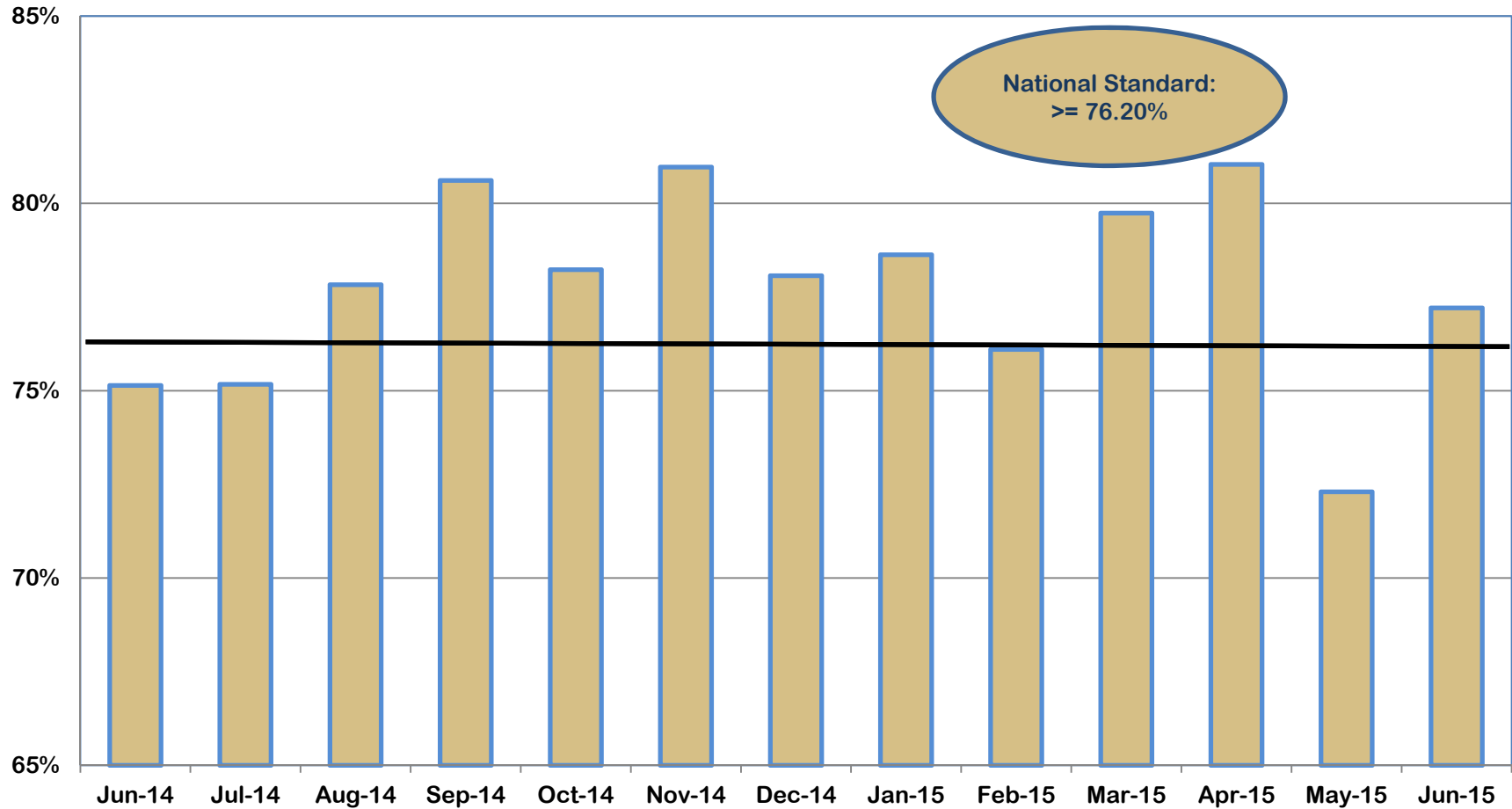


	Jun-14	Jul-14	Aug-14	Sep-14	Oct-14	Nov-14	Dec-14	Jan-15	Feb-15	Mar-15	Apr-15	May-15	Jun-15
<1 Year	53.7%	55.0%	55.2%	55.7%	55.9%	55.4%	55.1%	56.3%	55.6%	55.6%	55.4%	55.3%	55.2%
1 - <2 Years	25.1%	24.4%	23.9%	23.2%	22.9%	23.4%	24.1%	23.4%	23.9%	23.6%	24.0%	23.9%	23.9%
2 - <3 Years	11.4%	11.6%	11.2%	11.4%	11.0%	11.1%	11.2%	11.2%	10.8%	10.6%	10.3%	10.5%	10.9%
3 - <4 Years	5.2%	5.2%	5.3%	5.6%	5.7%	6.0%	5.8%	5.6%	5.7%	5.4%	5.2%	5.0%	5.0%
>=4 Years	4.6%	4.5%	4.5%	4.4%	4.3%	4.3%	4.4%	4.4%	4.3%	4.4%	4.6%	4.5%	4.6%



Division of Family and Children Services

Outcome IX: Length of Time to Reunification (June 2014 – June 2015)

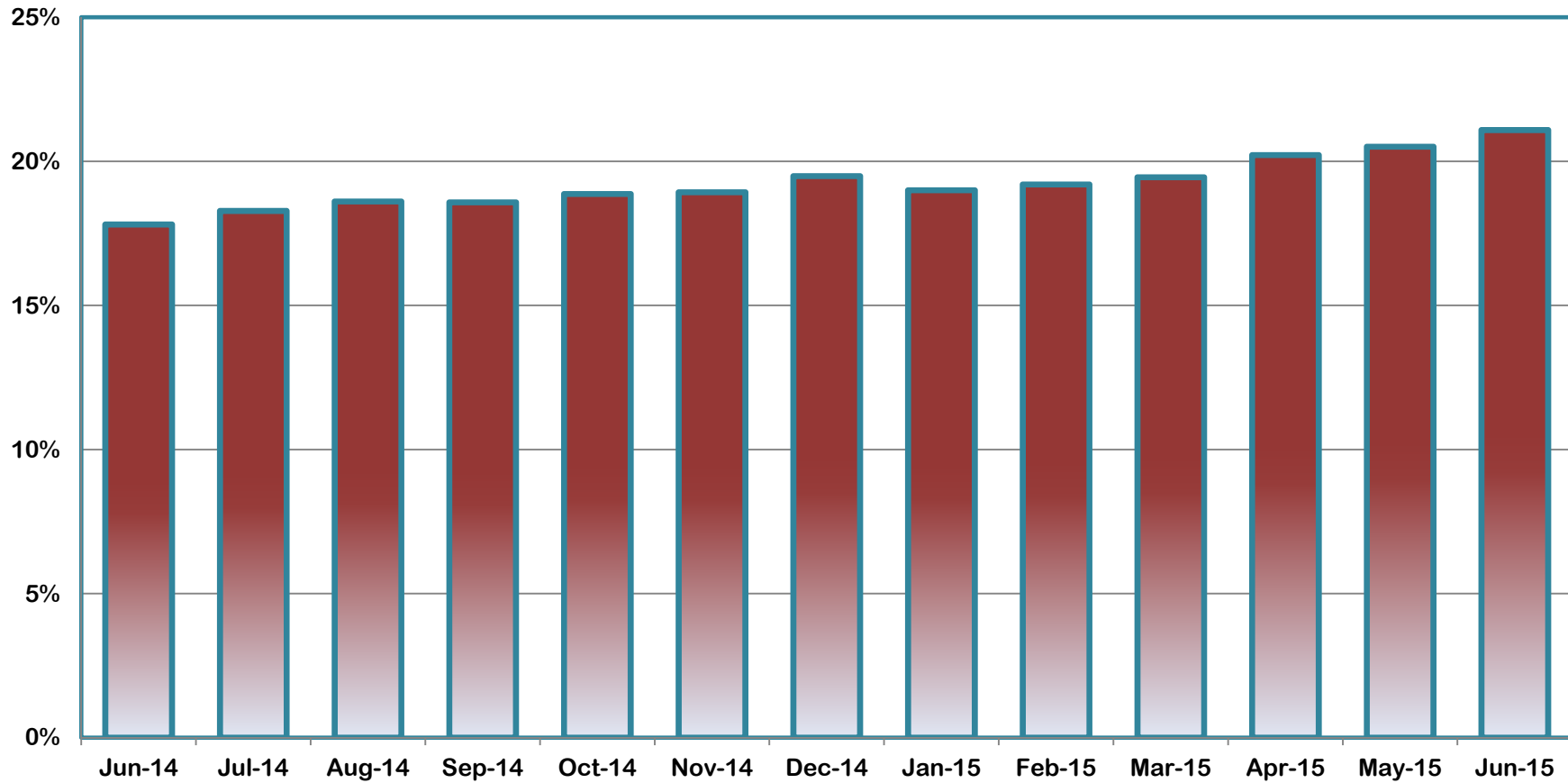


Jun-14	Jul-14	Aug-14	Sep-14	Oct-14	Nov-14	Dec-14	Jan-15	Feb-15	Mar-15	Apr-15	May-15	Jun-15
75.1%	75.2%	77.8%	80.6%	78.2%	81.0%	78.1%	78.6%	76.1%	79.7%	81.0%	72.3%	77.2%



Division of Family and Children Services

Outcome X: Percent of Children Placed with Relatives (June 2014 – June 2015)

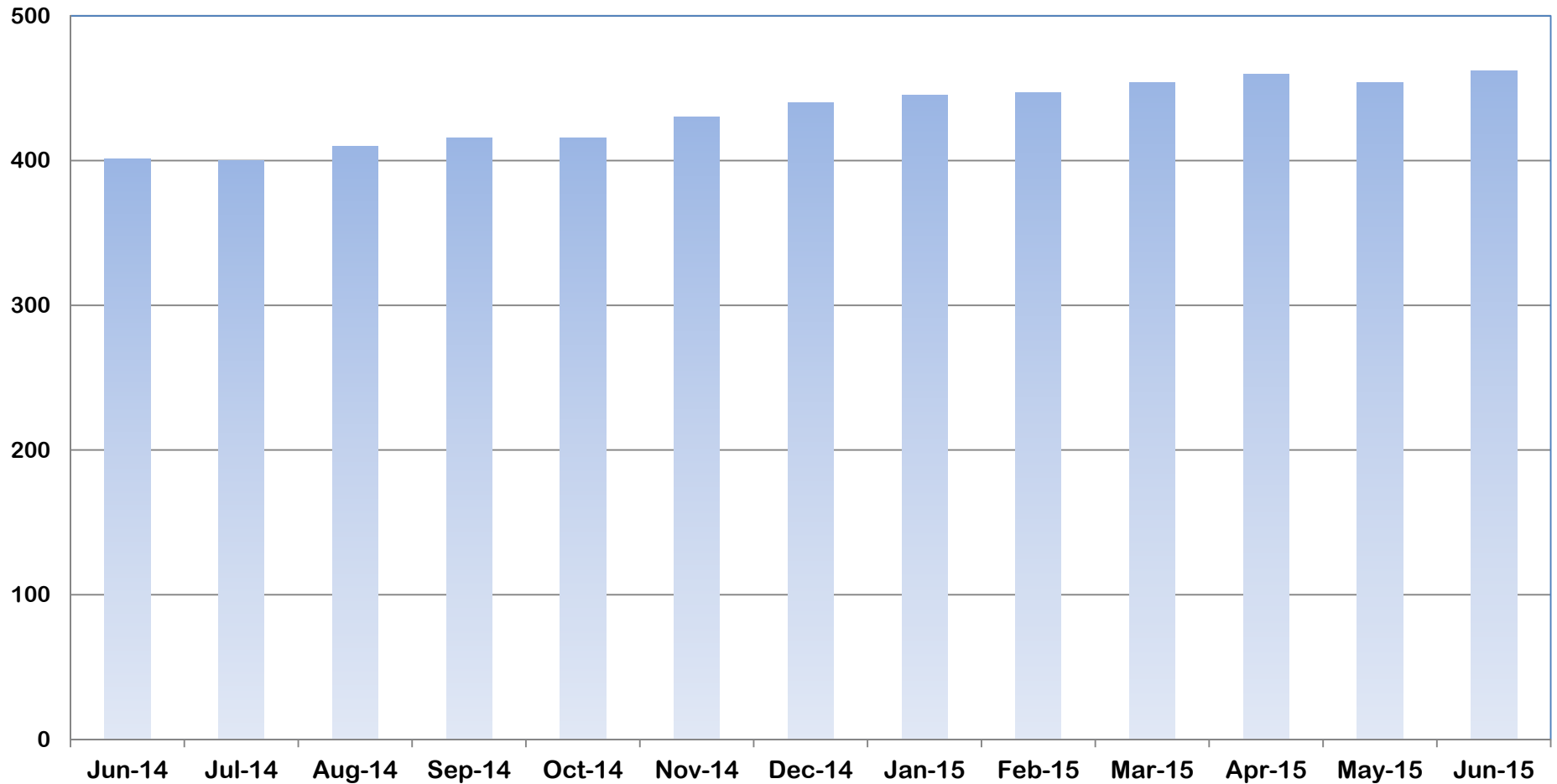


Jun-14	Jul-14	Aug-14	Sep-14	Oct-14	Nov-14	Dec-14	Jan-15	Feb-15	Mar-15	Apr-15	May-15	Jun-15
17.8%	18.3%	18.6%	18.6%	18.9%	18.9%	19.5%	19.0%	19.2%	19.5%	20.2%	20.5%	21.1%



Division of Family and Children Services

Outcome XI: Extended Youth Services (June 2014 – June 2015)

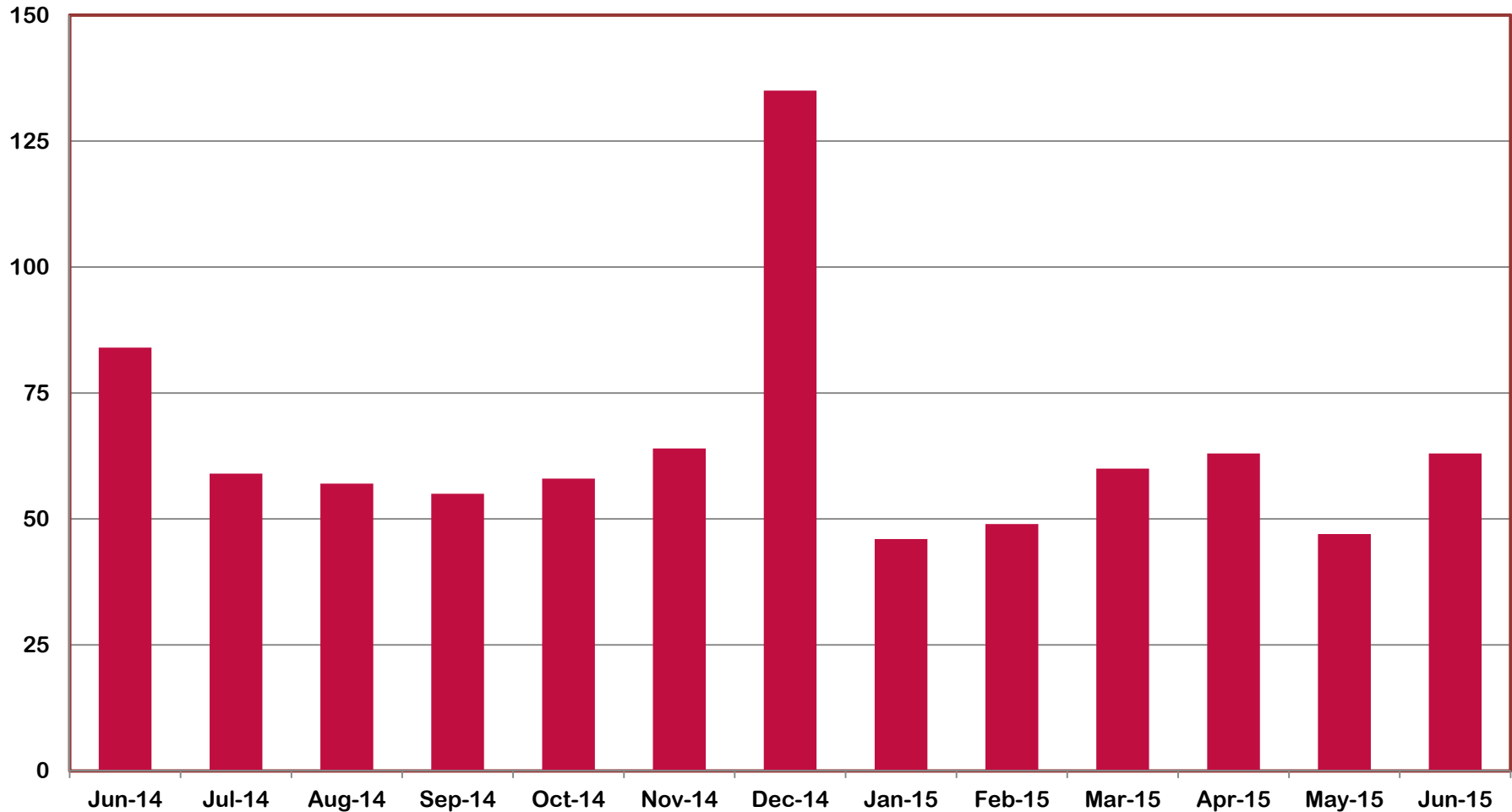


Jun-14	Jul-14	Aug-14	Sep-14	Oct-14	Nov-14	Dec-14	Jan-15	Feb-15	Mar-15	Apr-15	May-15	Jun-15
401	400	410	416	416	430	440	445	447	454	460	454	462



Division of Family and Children Services

Outcome XII: Number of Finalized Adoptions (June 2014 – June 2015)

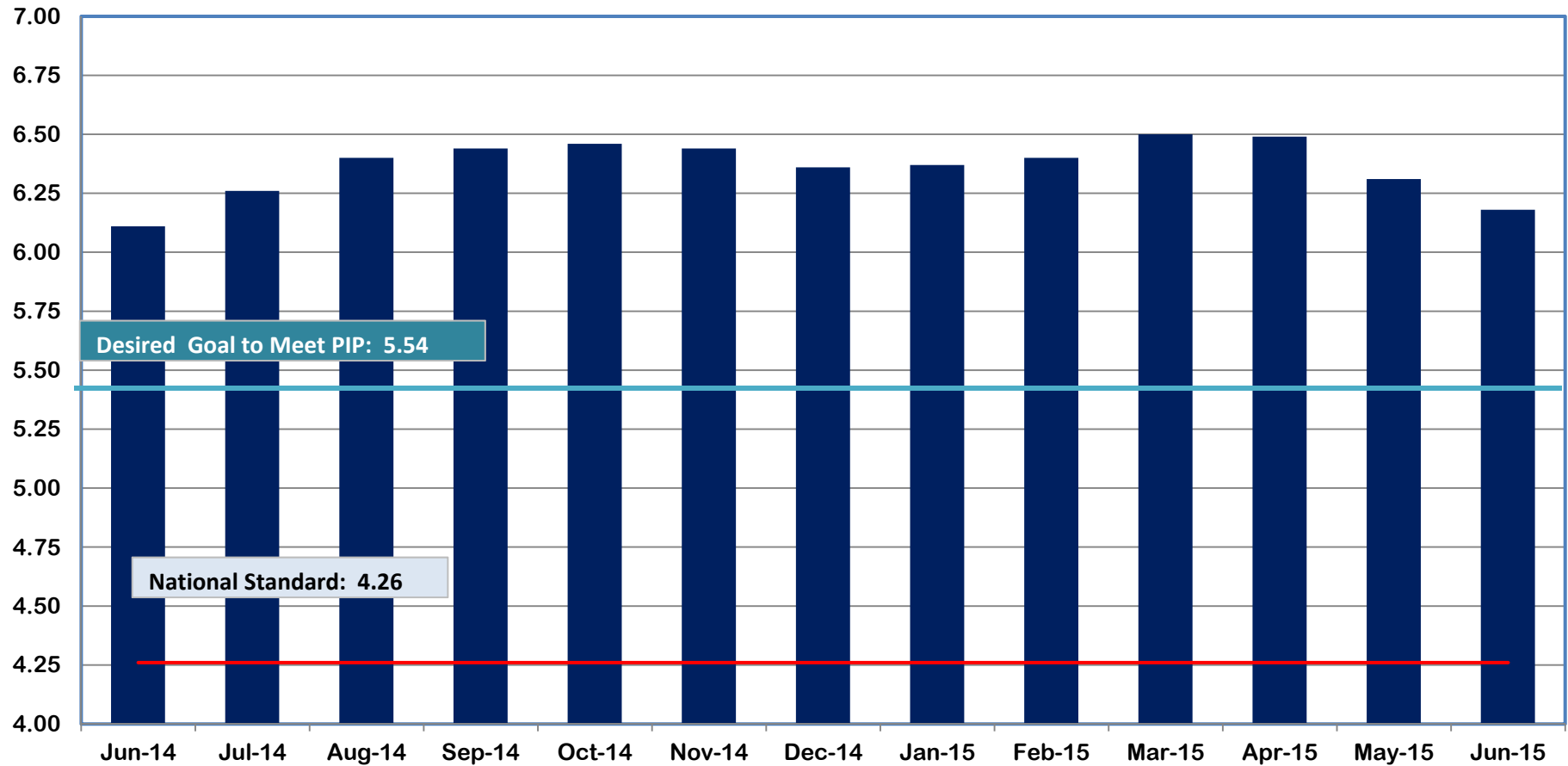


Jun-14	Jul-14	Aug-14	Sep-14	Oct-14	Nov-14	Dec-14	Jan-15	Feb-15	Mar-15	Apr-15	May-15	Jun-15
84	59	57	55	58	64	135	46	49	60	63	47	63



Division of Family and Children Services

Outcome XII: Placement Stability Performance Coefficient (June 2014 - June 2015)



Jun-14	Jul-14	Aug-14	Sep-14	Oct-14	Nov-14	Dec-14	Jan-15	Feb-15	Mar-15	Apr-15	May-15	Jun-15
6.11	6.26	6.40	6.44	6.46	6.44	6.36	6.37	6.40	6.50	6.49	6.31	6.18



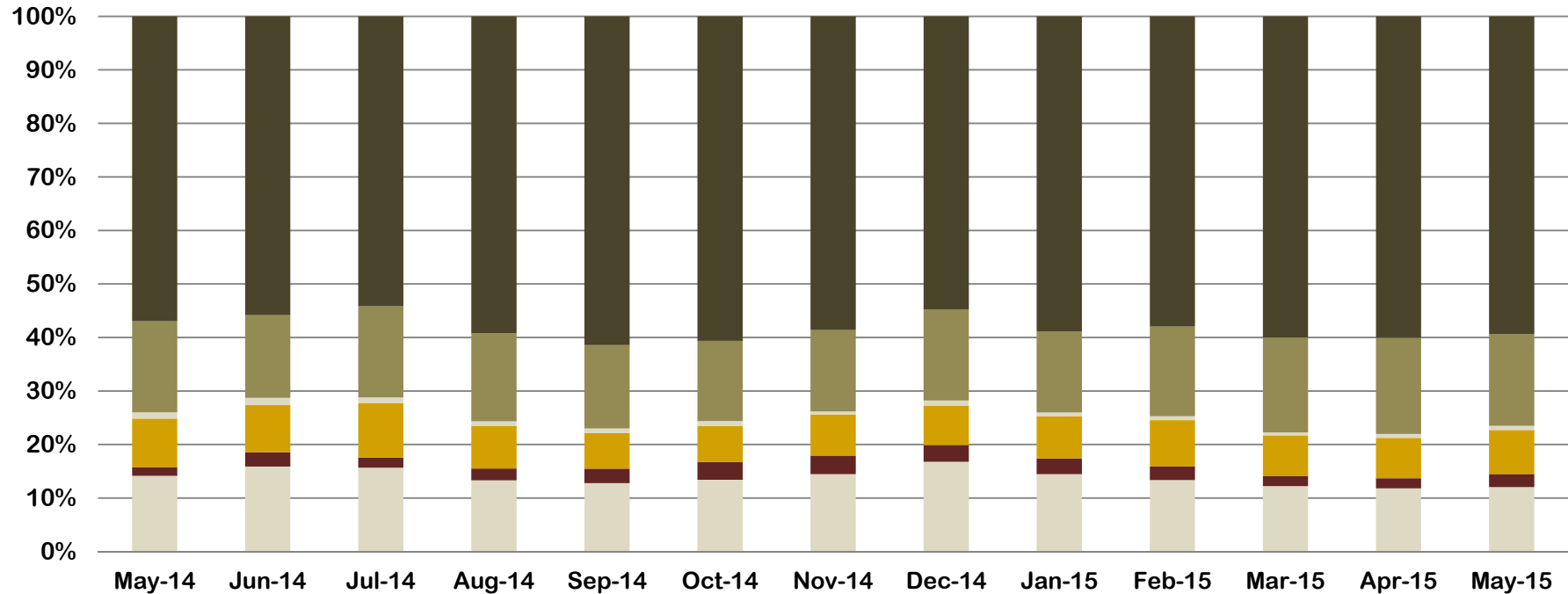
Division of Family and Children Services

Appendices



Appendix A

Outcome IV: Subsequent Case-Type of Investigations by Disposition (June 2014 – June 2015)



	May-14	Jun-14	Jul-14	Aug-14	Sep-14	Oct-14	Nov-14	Dec-14	Jan-15	Feb-15	Mar-15	Apr-15	May-15
Fam. Pres SubOpen	466	432	469	539	604	591	486	536	583	474	537	464	476
FamPres UnsubOpen	54	73	57	89	129	146	117	100	119	92	84	74	97
FostCare SubOpen	298	239	305	323	314	298	258	236	316	305	332	296	325
FostCare UnsubOpen	39	37	31	34	41	40	19	30	30	26	25	29	31
Subst Closed	561	420	510	667	736	660	511	544	609	595	778	705	675
Unsubst Closed	1,876	1,517	1,621	2,395	2,903	2,671	1,969	1,750	2,375	2,056	2,634	2,358	2,347



APPENDIX B

Regional Graphs of Outcome VI

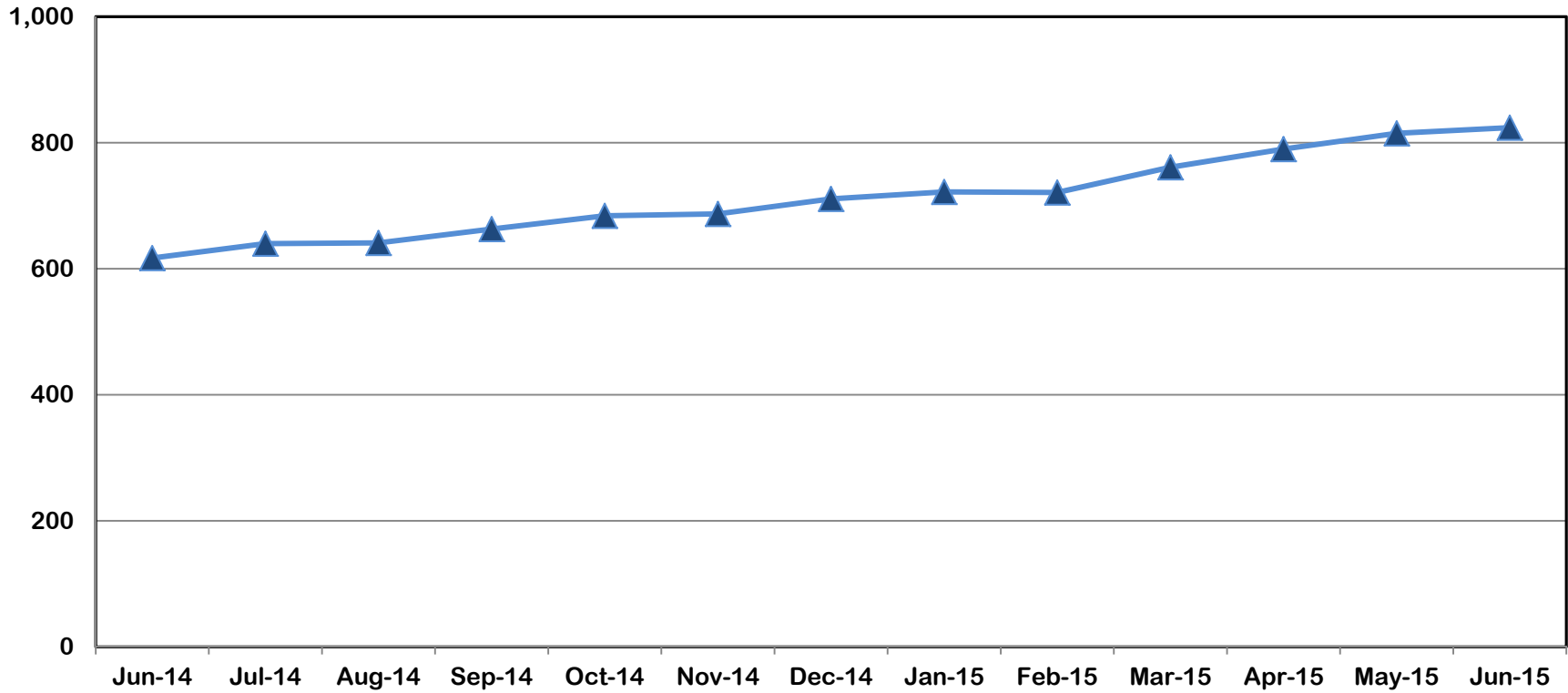
Children in DFCS Custody Under the Age of 18
(June 2014 – June 2015)



Division of Family and Children Services

Outcome VI: Children in DFCS Custody Under the Age of 18 (June 2014 – June 2015)

Region I



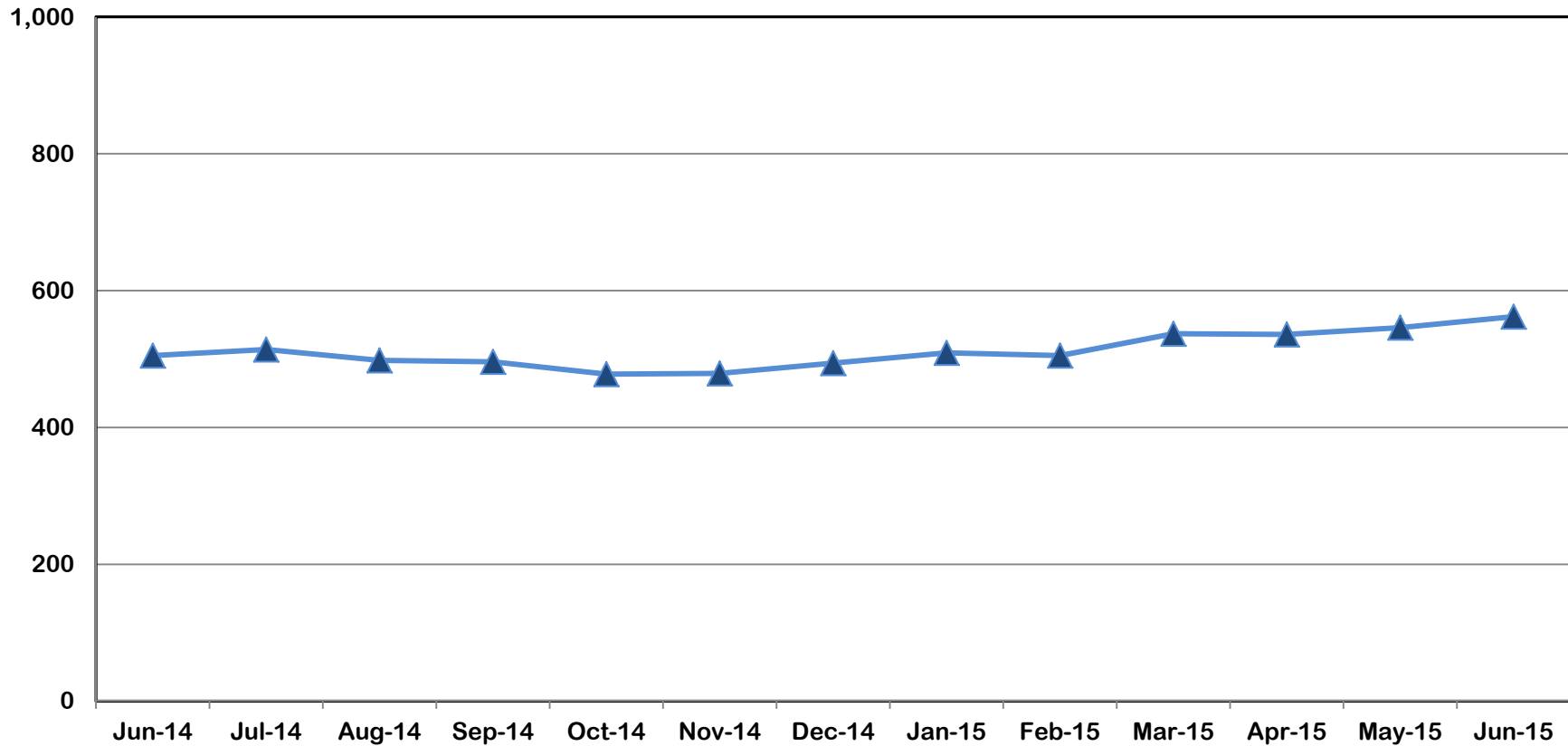
Jun-14	Jul-14	Aug-14	Sep-14	Oct-14	Nov-14	Dec-14	Jan-15	Feb-15	Mar-15	Apr-15	May-15	Jun-15
617	640	641	663	684	687	711	722	721	761	790	815	824



Division of Family and Children Services

Outcome VI: Children in DFCS Custody Under the Age of 18 (June 2014 – June 2015)

Region II



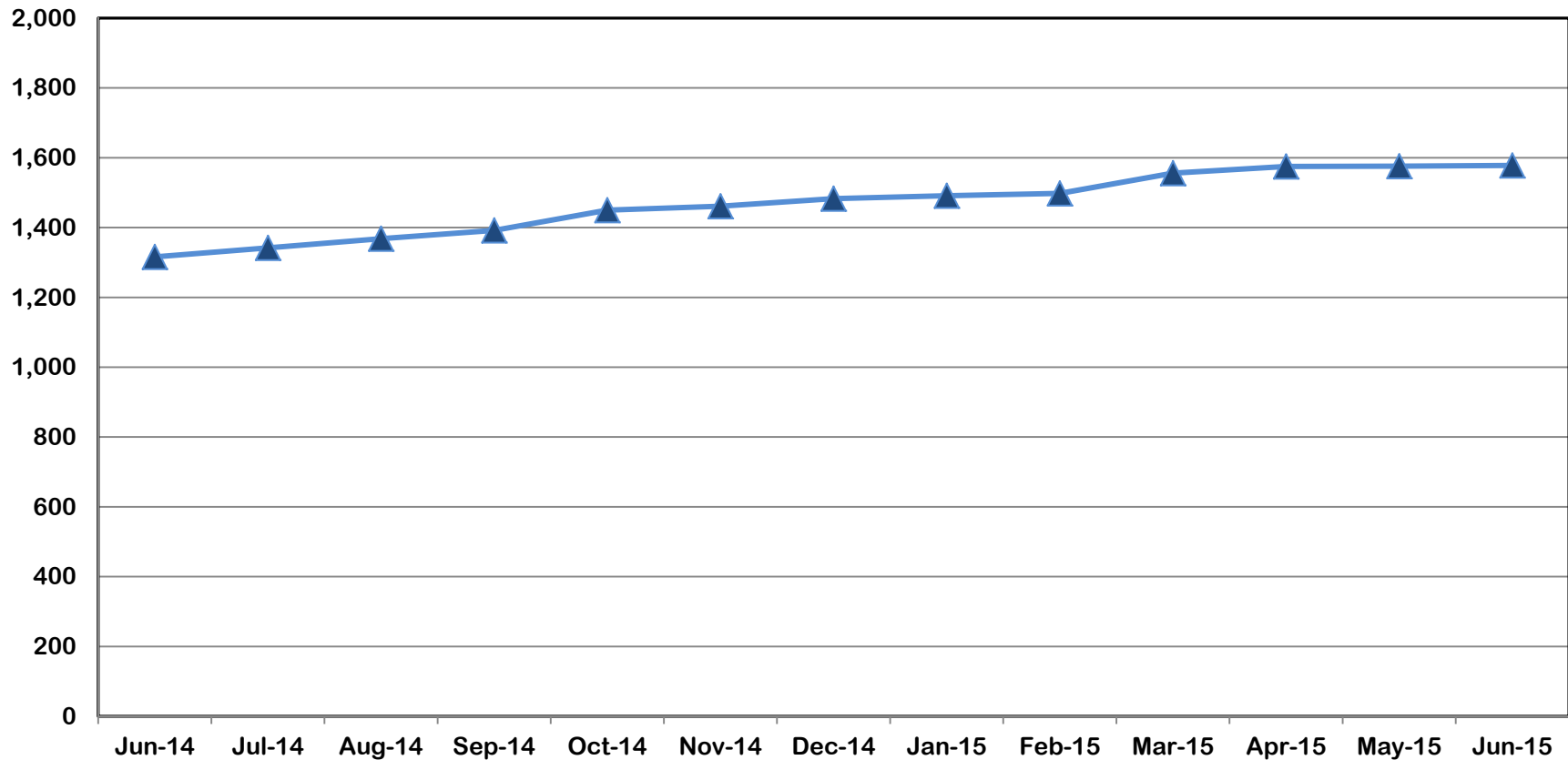
Jun-14	Jul-14	Aug-14	Sep-14	Oct-14	Nov-14	Dec-14	Jan-15	Feb-15	Mar-15	Apr-15	May-15	Jun-15
505	514	498	496	478	479	494	509	505	537	536	546	562



Division of Family and Children Services

Outcome VI: Children in DFCS Custody Under the Age of 18 (June 2014 – June 2015)

Region III



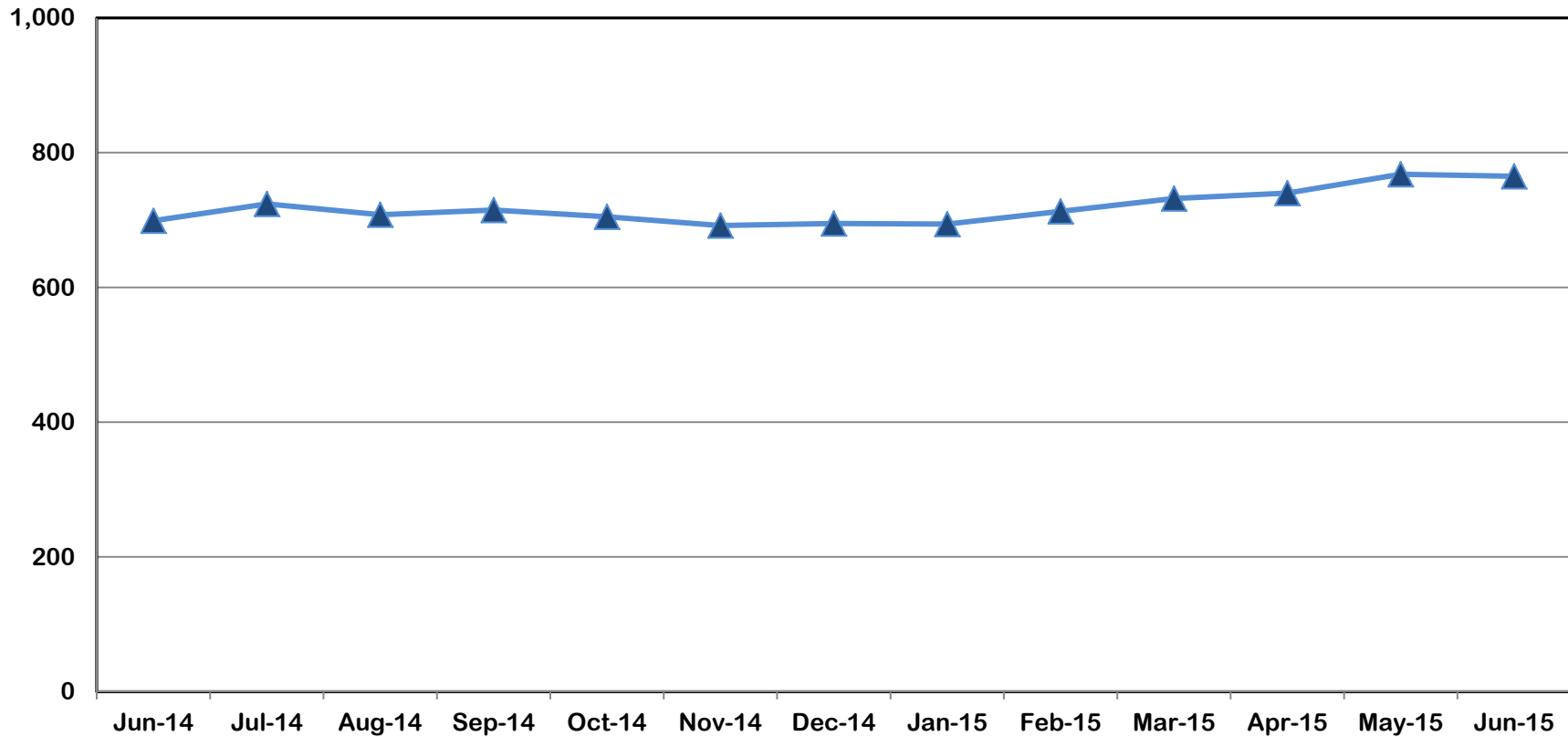
Jun-14	Jul-14	Aug-14	Sep-14	Oct-14	Nov-14	Dec-14	Jan-15	Feb-15	Mar-15	Apr-15	May-15	Jun-15
1,316	1,342	1,368	1,392	1,450	1,461	1,483	1,491	1,498	1,556	1,575	1,576	1,578



Division of Family and Children Services

Outcome VI: Children in DFCS Custody Under the Age of 18 (June 2014 – June 2015)

Region IV



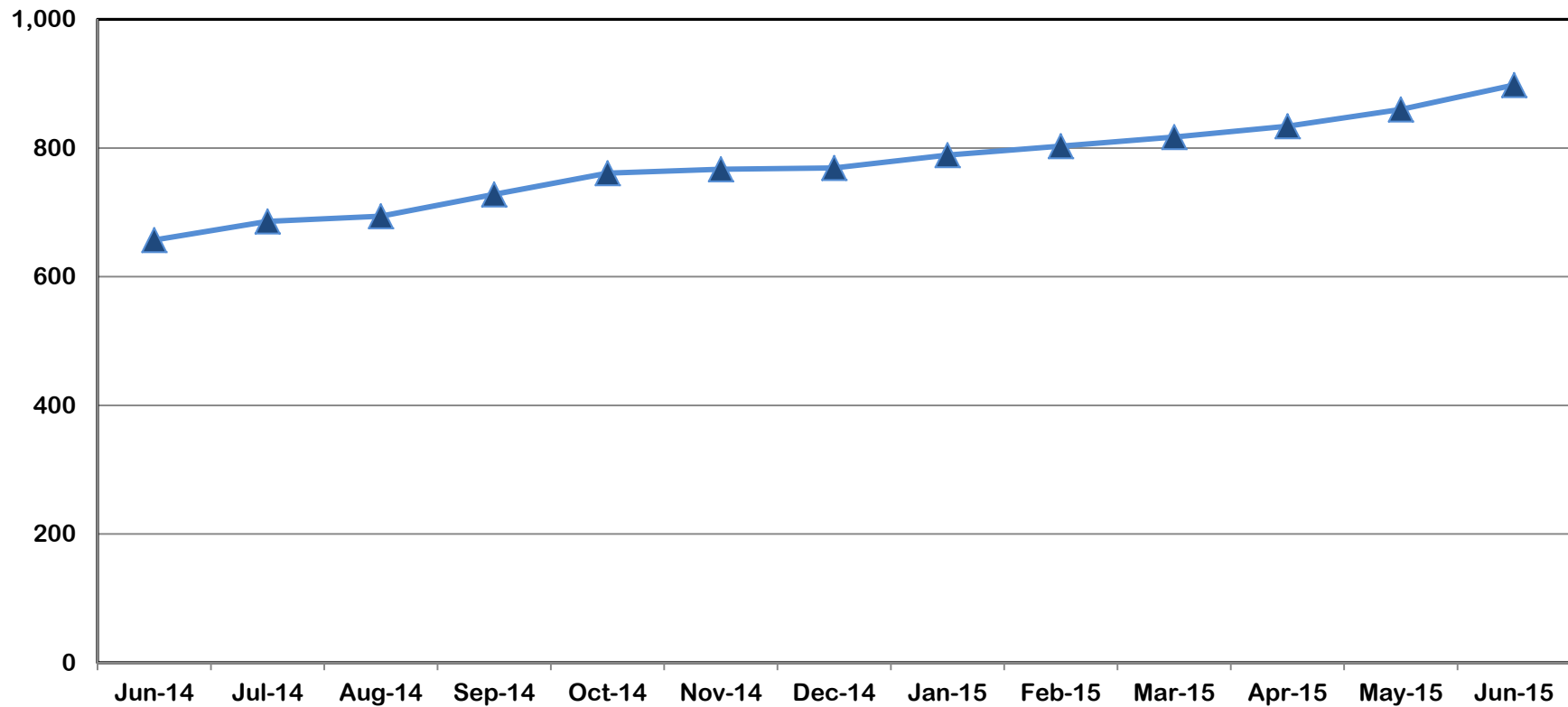
Jun-14	Jul-14	Aug-14	Sep-14	Oct-14	Nov-14	Dec-14	Jan-15	Feb-15	Mar-15	Apr-15	May-15	Jun-15
699	724	708	715	705	692	695	694	713	732	740	768	765



Division of Family and Children Services

Outcome VI: Children in DFCS Custody Under the Age of 18 (June 2014 – June 2015)

Region V



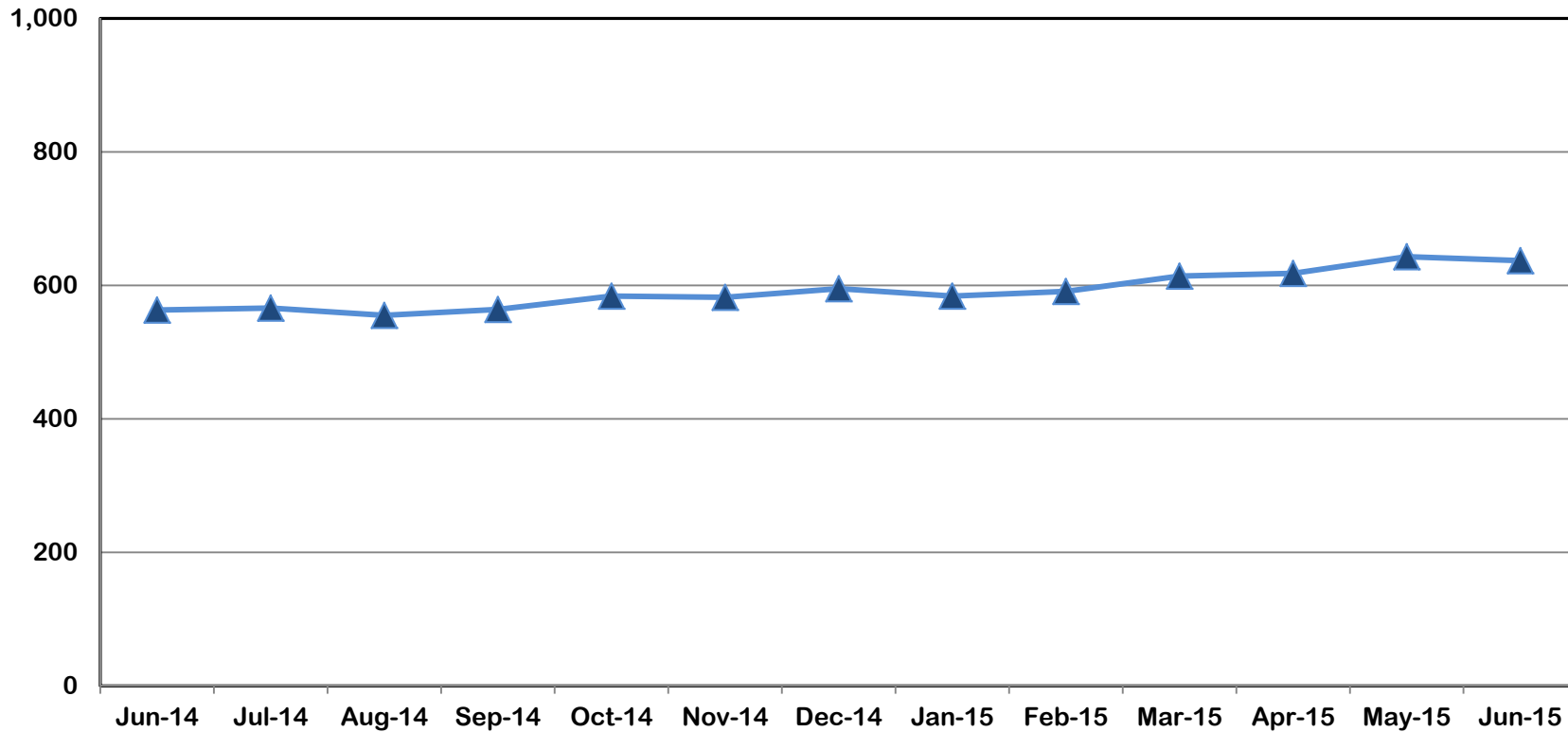
Jun-14	Jul-14	Aug-14	Sep-14	Oct-14	Nov-14	Dec-14	Jan-15	Feb-15	Mar-15	Apr-15	May-15	Jun-15
657	686	694	728	761	767	769	789	803	817	834	860	898



Division of Family and Children Services

Outcome VI: Children in DFCS Custody Under the Age of 18 (June 2014 – June 2015)

Region VI



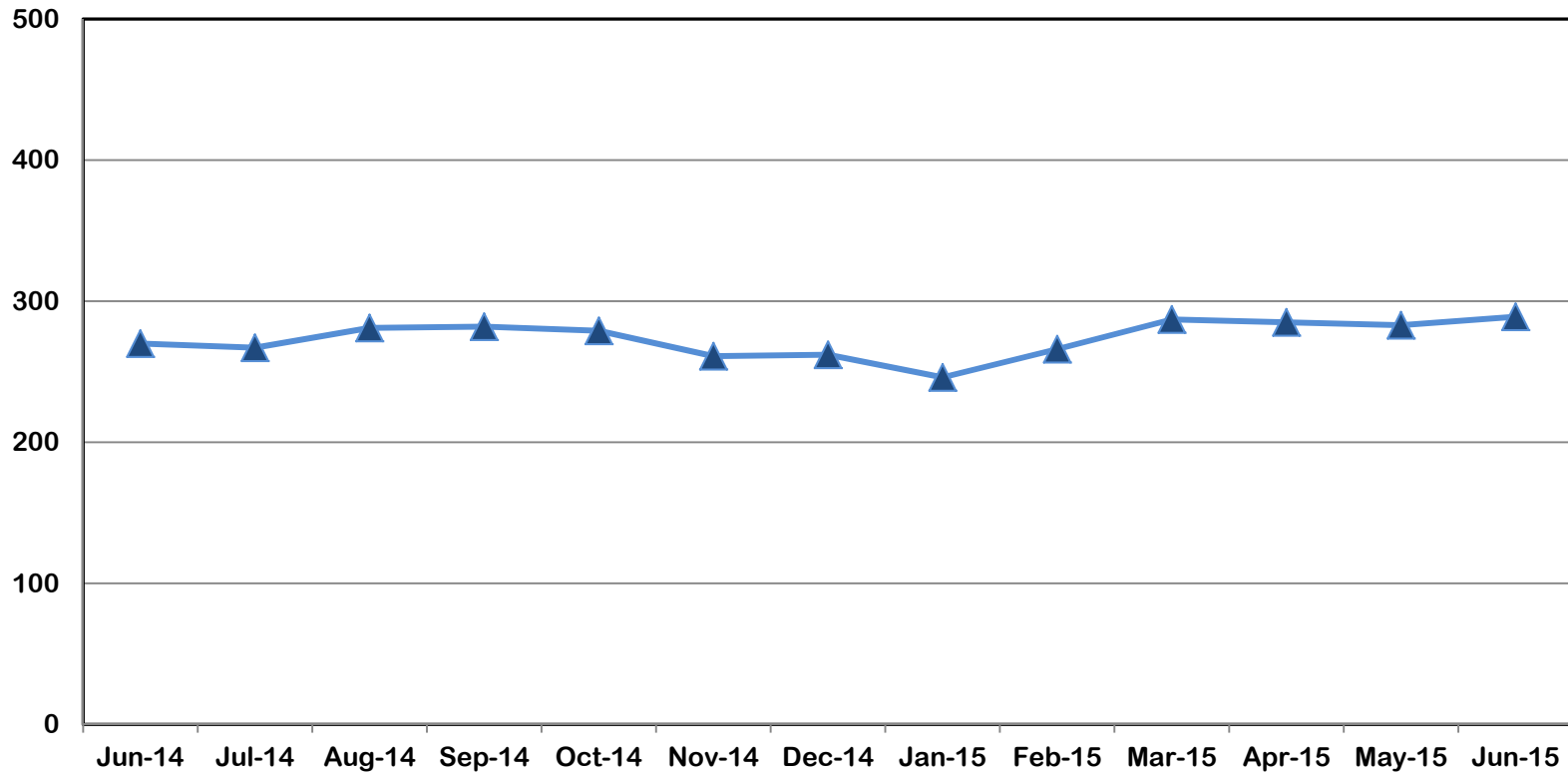
Jun-14	Jul-14	Aug-14	Sep-14	Oct-14	Nov-14	Dec-14	Jan-15	Feb-15	Mar-15	Apr-15	May-15	Jun-15
563	566	555	564	584	582	595	584	591	614	618	643	637



Division of Family and Children Services

Outcome VI: Children in DFCS Custody Under the Age of 18 (June 2014 – June 2015)

Region VII



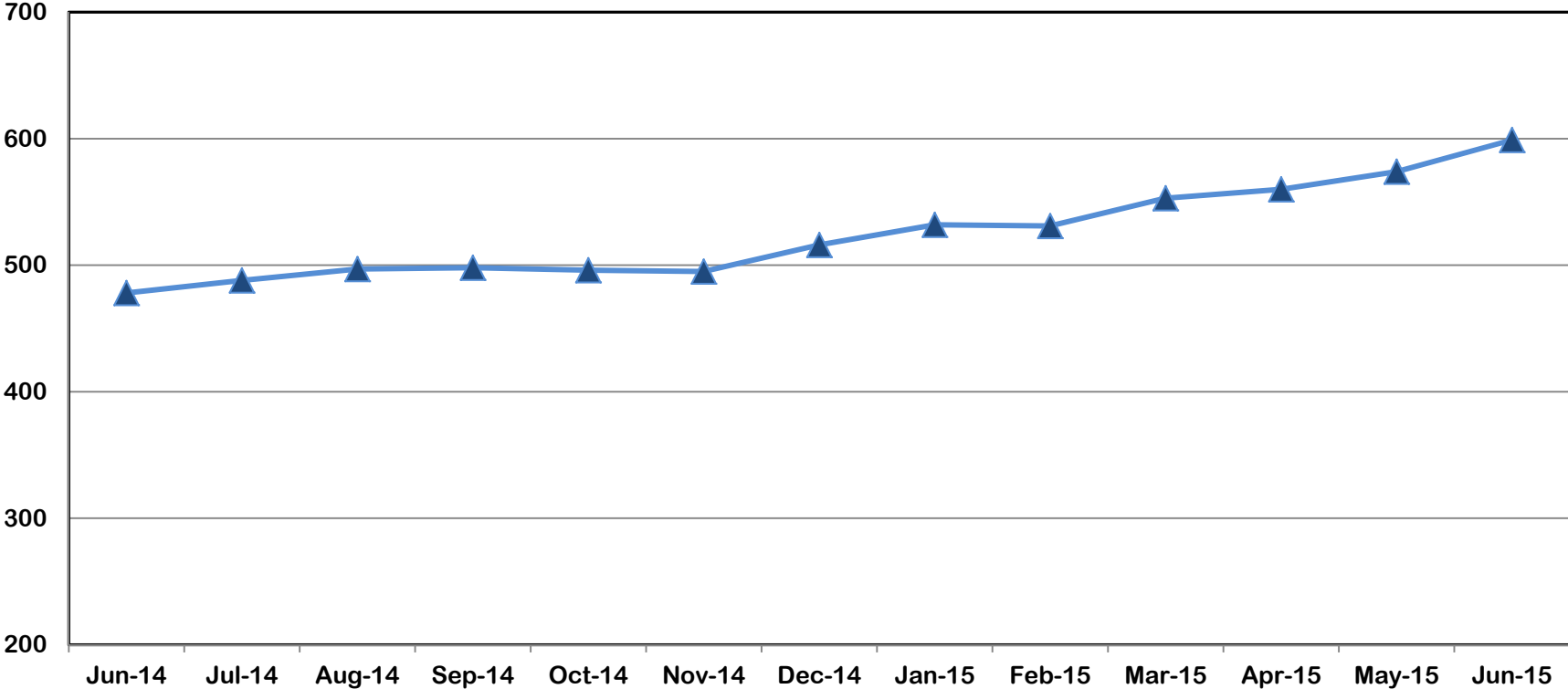
Jun-14	Jul-14	Aug-14	Sep-14	Oct-14	Nov-14	Dec-14	Jan-15	Feb-15	Mar-15	Apr-15	May-15	Jun-15
270	267	281	282	279	261	262	246	266	287	285	283	289



Division of Family and Children Services

Outcome VI: Children in DFCS Custody Under the Age of 18 (June 2014 – June 2015)

Region VIII

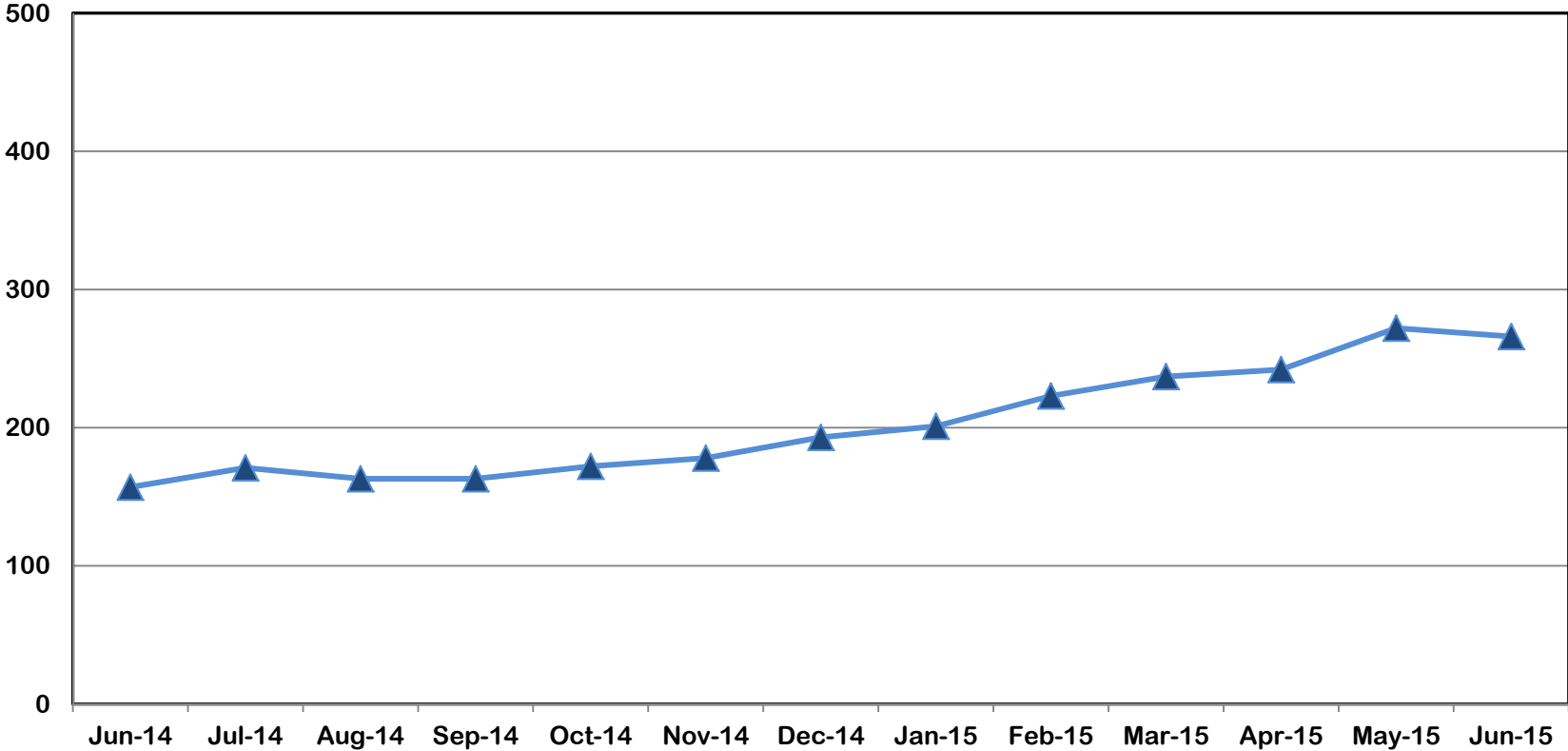


Jun-14	Jul-14	Aug-14	Sep-14	Oct-14	Nov-14	Dec-14	Jan-15	Feb-15	Mar-15	Apr-15	May-15	Jun-15
478	488	497	498	496	495	516	532	531	553	560	574	599



Outcome VI: Children in DFCS Custody Under the Age of 18 (June 2014 – June 2015)

Region IX

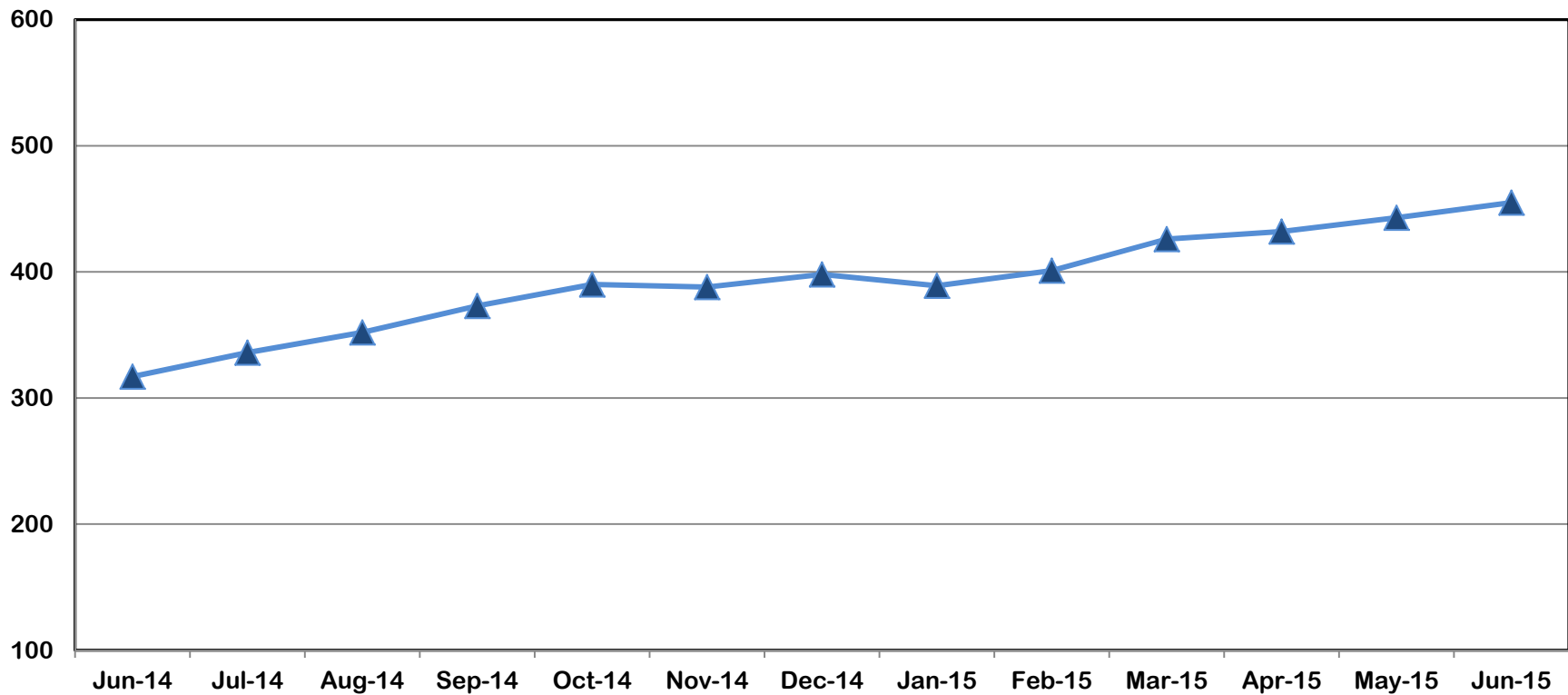


Jun-14	Jul-14	Aug-14	Sep-14	Oct-14	Nov-14	Dec-14	Jan-15	Feb-15	Mar-15	Apr-15	May-15	Jun-15
157	171	163	163	172	178	193	201	223	237	242	272	266



Outcome VI: Children in DFCS Custody Under the Age of 18 (June 2014 – June 2015)

Region X



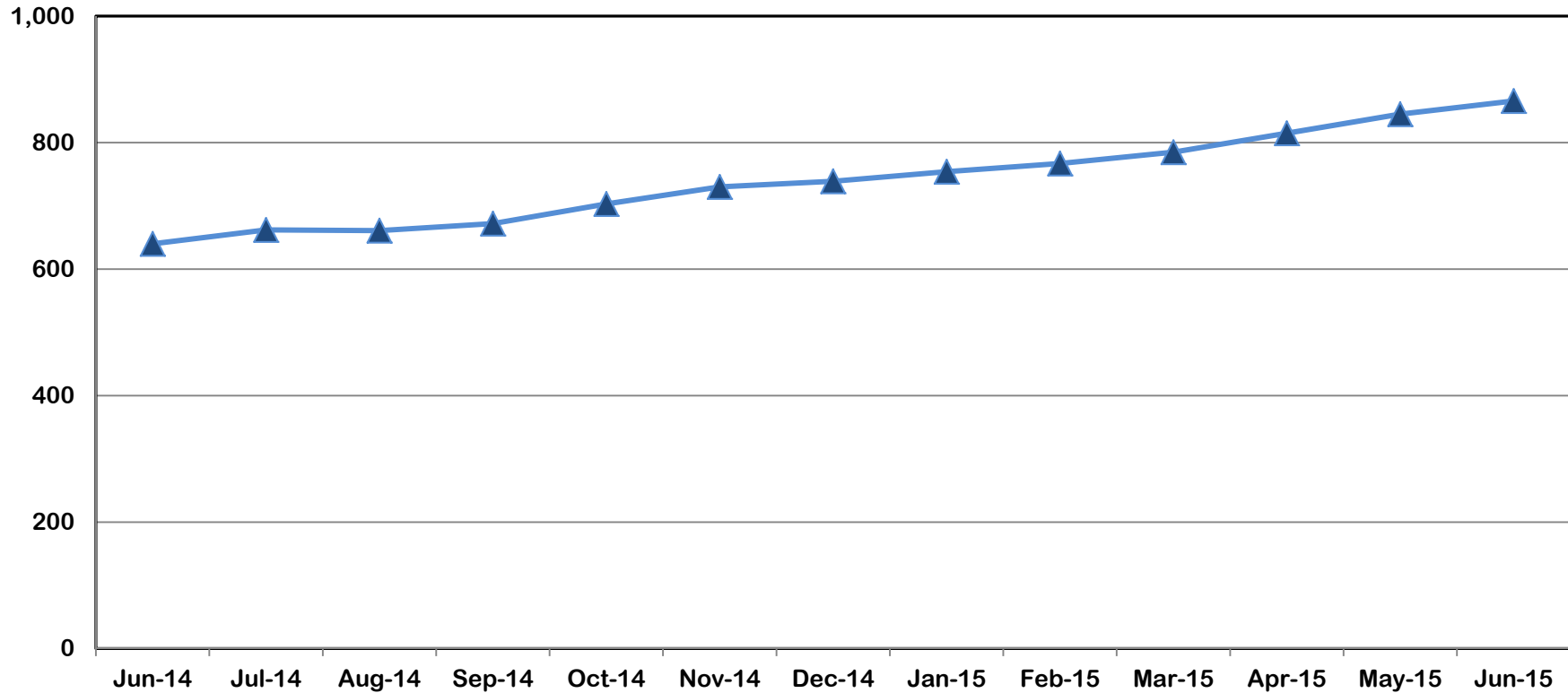
Jun-14	Jul-14	Aug-14	Sep-14	Oct-14	Nov-14	Dec-14	Jan-15	Feb-15	Mar-15	Apr-15	May-15	Jun-15
317	336	352	373	390	388	398	389	401	426	432	443	455



Division of Family and Children Services

Outcome VI: Children in DFCS Custody Under the Age of 18 (June 2014 – June 2015)

Region XI



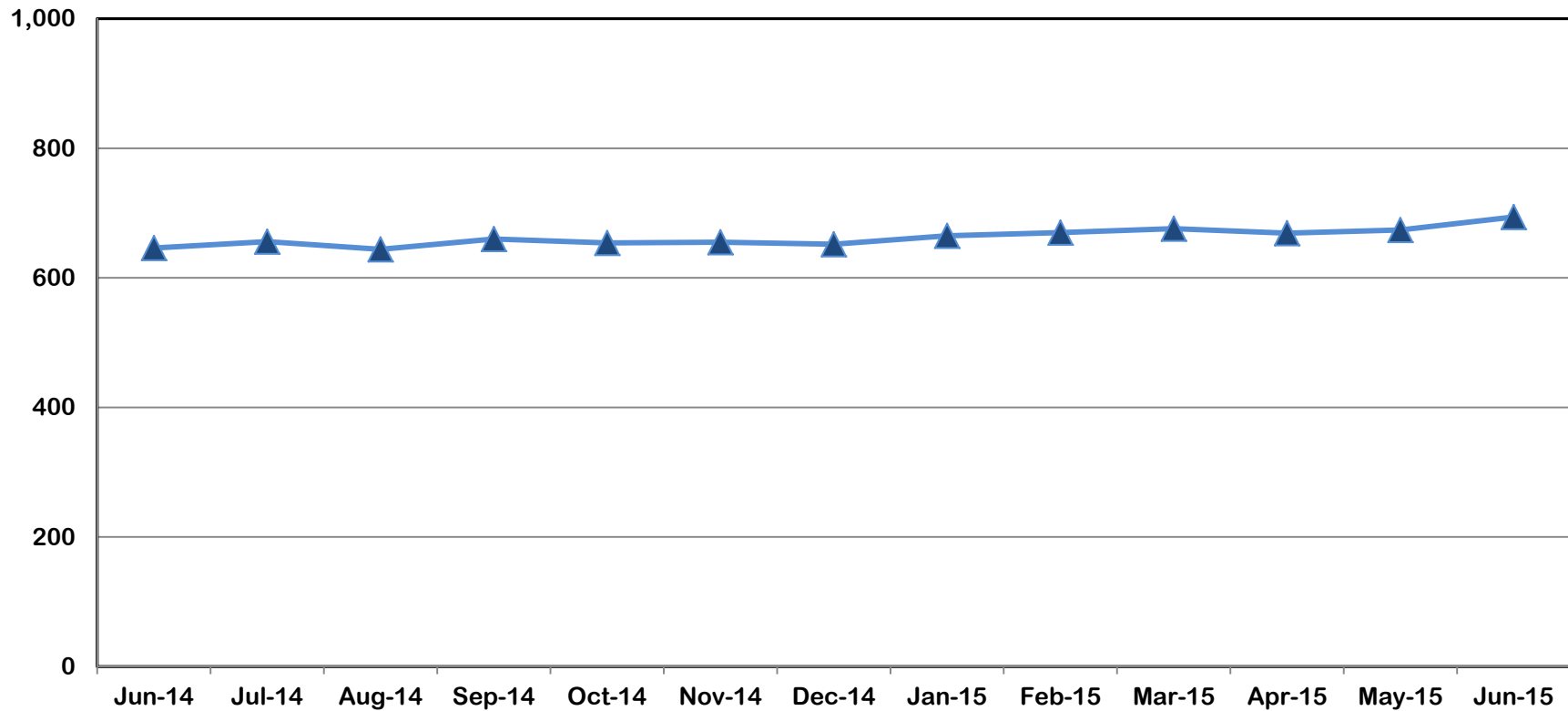
Jun-14	Jul-14	Aug-14	Sep-14	Oct-14	Nov-14	Dec-14	Jan-15	Feb-15	Mar-15	Apr-15	May-15	Jun-15
640	662	661	672	703	730	739	754	767	785	815	845	866



Division of Family and Children Services

Outcome VI: Children in DFCS Custody Under the Age of 18 (June 2014 – June 2015)

Region XII



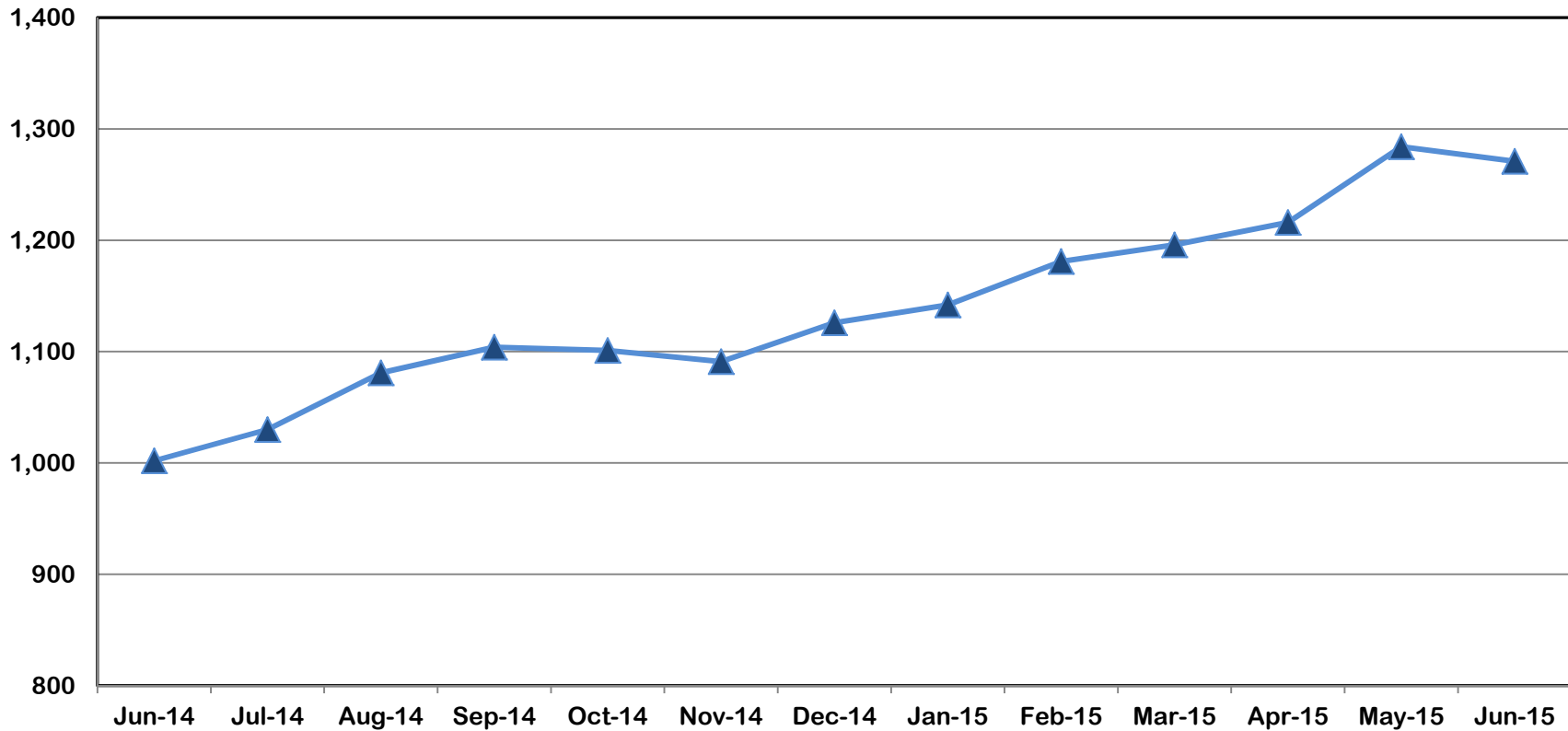
Jun-14	Jul-14	Aug-14	Sep-14	Oct-14	Nov-14	Dec-14	Jan-15	Feb-15	Mar-15	Apr-15	May-15	Jun-15
646	656	644	660	654	655	652	665	670	676	669	674	694



Division of Family and Children Services

Outcome VI: Children in DFCS Custody Under the Age of 18 (June 2014 – June 2015)

Region XIII



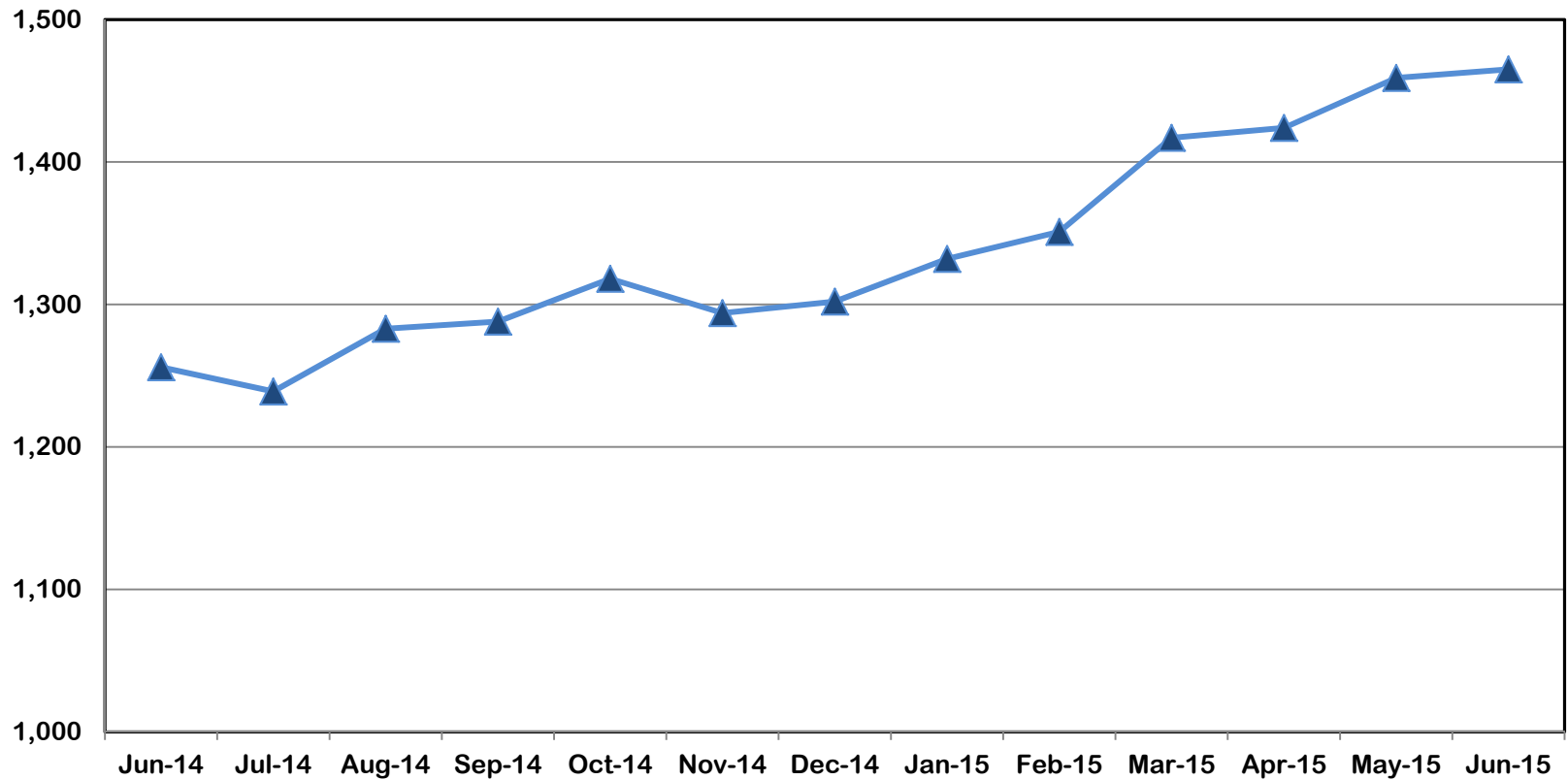
Jun-14	Jul-14	Aug-14	Sep-14	Oct-14	Nov-14	Dec-14	Jan-15	Feb-15	Mar-15	Apr-15	May-15	Jun-15
1,002	1,030	1,081	1,104	1,101	1,091	1,126	1,142	1,181	1,196	1,216	1,284	1,271



Division of Family and Children Services

Outcome VI: Children in DFCS Custody Under the Age of 18 (June 2014 – June 2015)

Region XIV



Jun-14	Jul-14	Aug-14	Sep-14	Oct-14	Nov-14	Dec-14	Jan-15	Feb-15	Mar-15	Apr-15	May-15	Jun-15
1,256	1,239	1,283	1,288	1,318	1,294	1,302	1,332	1,351	1,417	1,424	1,459	1,465



Division of Family and Children Services