



Georgia Division of Family & Children Services

Bobby Cagle, Director

Monthly Measures and Results for July 2016*

* (Reflects Safety Outcomes as of May 31, 2016 And
Permanency Outcomes as of June 30, 2016)
With Appendices

This report is produced by the Data Unit. For questions or comments, you may contact one of the following:
Samantha Adams, Director (Samantha.Adams@dhs.ga.gov)
John Roach, Unit Manager (John.Roach@dhs.ga.gov)
Vickie Fluellen, Analyst (Vickie.Fluellen@dhs.ga.gov)



Division of Family & Children Services

- Part I: Definitions And Data Sources contained in Report**
- Part II: Safety Outcomes**
- Part III: Permanency/Well-being Outcomes**
- Part IV: Appendices**
 - A. Disposition of Investigations by Percentage**
 - B. Regional Charts of Outcome V (Trend of Unique Children in the Legal Custody of DFCS Under the Age of 18)**
 - C. Regional Charts of Outcome XIV: Stability Performance Coefficient (Number of Moves/Number of Days in Custody * 1000)**



SAFETY: Children are first and foremost, protected from abuse and neglect.

Outcome I: Child Protective Services Cases

Count of unique CPS Investigations and Family Preservation (Ongoing) stages open at any point during the month. Includes all cases active at some time during the month. Outcome is calculated 45 days prior to the date of report.

Outcome 1A: Family Support Cases Only: Count of unique Family Support stages open at any point during the month.

Outcome 1B: Family Preservation Cases Only: Count of unique Family Preservation stages open at any point during the month.

Outcome 1C: Investigation Cases Only: Count of unique Investigation stages open at any point during the month.

Sources: SHINES

Outcome II: Recurrence of Substantiated Child Maltreatment

Of all the children who were victims of substantiated maltreatment in the first 6 months of the year, the percentage that had substantiated maltreatment within the following 6 months. Outcome is calculated 45 days prior to the date of report. Each month is calculated as a rolling calendar year. *National Standard: less than or equal to 5.40%*

Source: SHINES

Outcome III: Disposition of Child Abuse and Neglect Reports

Chart reflects the disposition of reports received in a particular month. Data includes count of Family Support, Substantiated Investigations, Unsubstantiated Investigations and Screen-outs. Outcome is calculated 45 days prior to the date of report.

Source: SHINES

Outcome IV: Subsequent Case-type of Investigations by Disposition

Chart reflects the disposition of investigations received in a particular month by the subsequent case type. Data includes count of Family Preservation (Substantiated and Unsubstantiated Open), Foster Care (Substantiated and Unsubstantiated Open), Substantiated and Unsubstantiated Closed. Outcome is calculated 45 days prior to the date of report.

Source: SHINES



Division of Family & Children Services

PERMANENCY: Children have permanency and stability in their living situations.

Outcome V: Number of Child Placement Services Cases

Count of unique children who were involved in an open Foster Care or Adoption stage during the month. In placement services each child who is the principal (PC) is considered a case.

Source: SHINES

Outcome VI: Children in the Legal Custody of DFCS Under the Age of 18

Count of unique children who were in the legal custody of DFCS (17 years of age and under) at some point during the month

Outcome VI - A: Children in the Legal Custody of DFCS Under the Age of 18 (Regional)

Count of unique children who were in the legal custody of DFCS (17 years of age and under) at some point during the month.

Source: SHINES

Outcome VII: Comparison of Foster Care Entries & Exits

Number of children who have entered foster care and number of children who have exited foster care during the month.

Total children at end of month show the number of children on the last day of the month.

Source: SHINES

Outcome VIII: Foster Care Re-entries

Of all the children who entered foster care, the percentage that were discharged from a prior episode of foster care within 12 months of the current foster care placement. National Standard: less than or equal to 8.60%.

Source: SHINES

Outcome IX: Foster Care Length of Stay

Percentage of children by number of months in foster care during each month.

Source: SHINES



Division of Family & Children Services

PERMANENCY cont'd: Children have permanency and stability in their living situations.

Outcome X: Length of Time to Achieve Reunification

Percentage of children who exited care during the month through reunification with their family that reunified in less than 12 months from the date of their removal. National Standard: greater than or equal to 76.20%

Source: SHINES

Outcome XI: Children Placed with Relatives

Of all children in DFCS custody, the percentage that are placed with a relative or a relative foster home.

State Target: greater than or equal to 30.00%

Source: SHINES

Outcome XII: Extended Youth Services

Number of children ages 18 – 21 who remained in the custody of DFCS beyond their birth month.

Source: SHINES

Outcome XIII: Adoptions Finalized

The number of children whose adoption was finalized within each month..

Source: SHINES

Outcome XIV: Stability Performance Coefficient (Number of Moves/Number of Days in Custody * 1000)

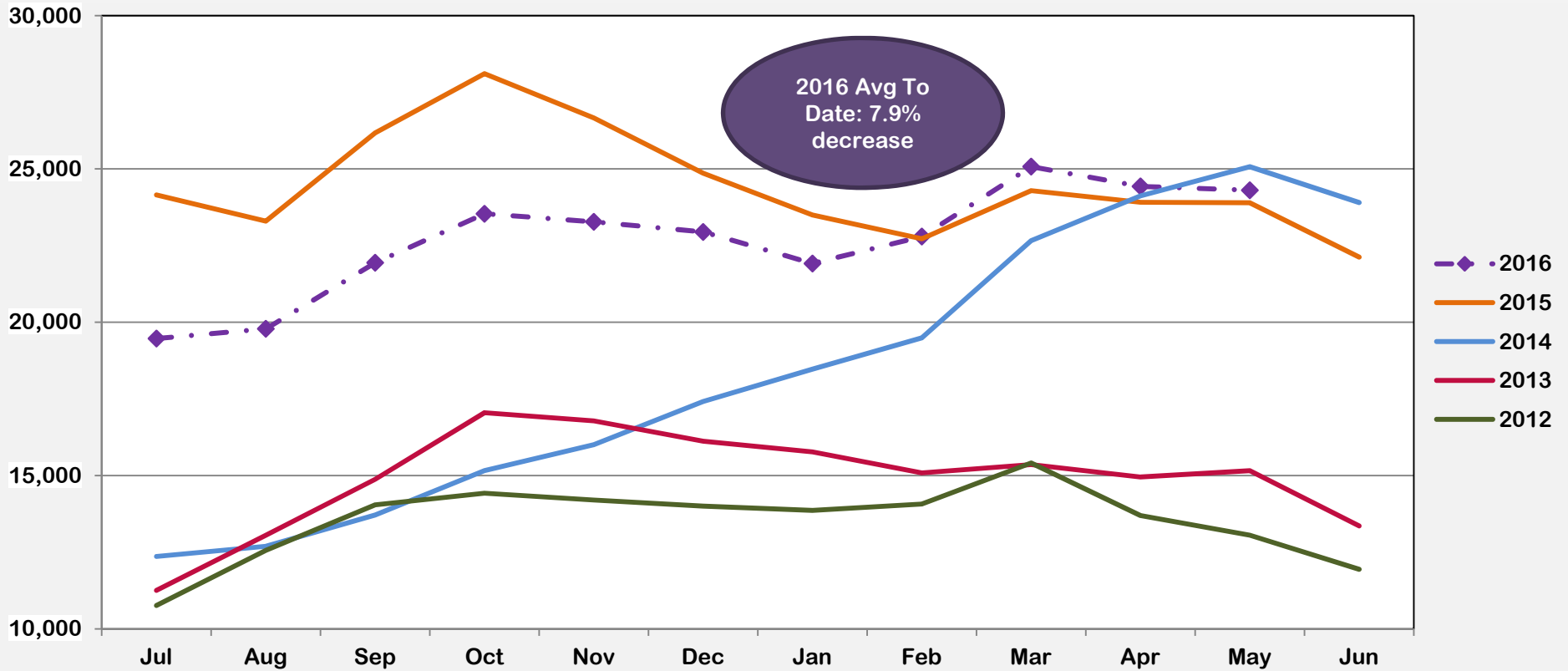
A calculated value based upon the ACF CFSR Round 3 which is part of Program Improvement. It is calculated from a rolling 12 month population of the entry cohort where the child remained in custody for over 8 days and was not 18 on the date of removal. The ACF Target is: 4.12 to avoid PIP. Georgia's Program Improvement Plan Target is: 6.01.

Source: SHINES

***Note: Data may vary from month to month due to 13 month data trends being re-run over the time span for the various outcomes in this report.*



Outcome I: Child Protective Services Cases (State Fiscal Year 2016 To Date)

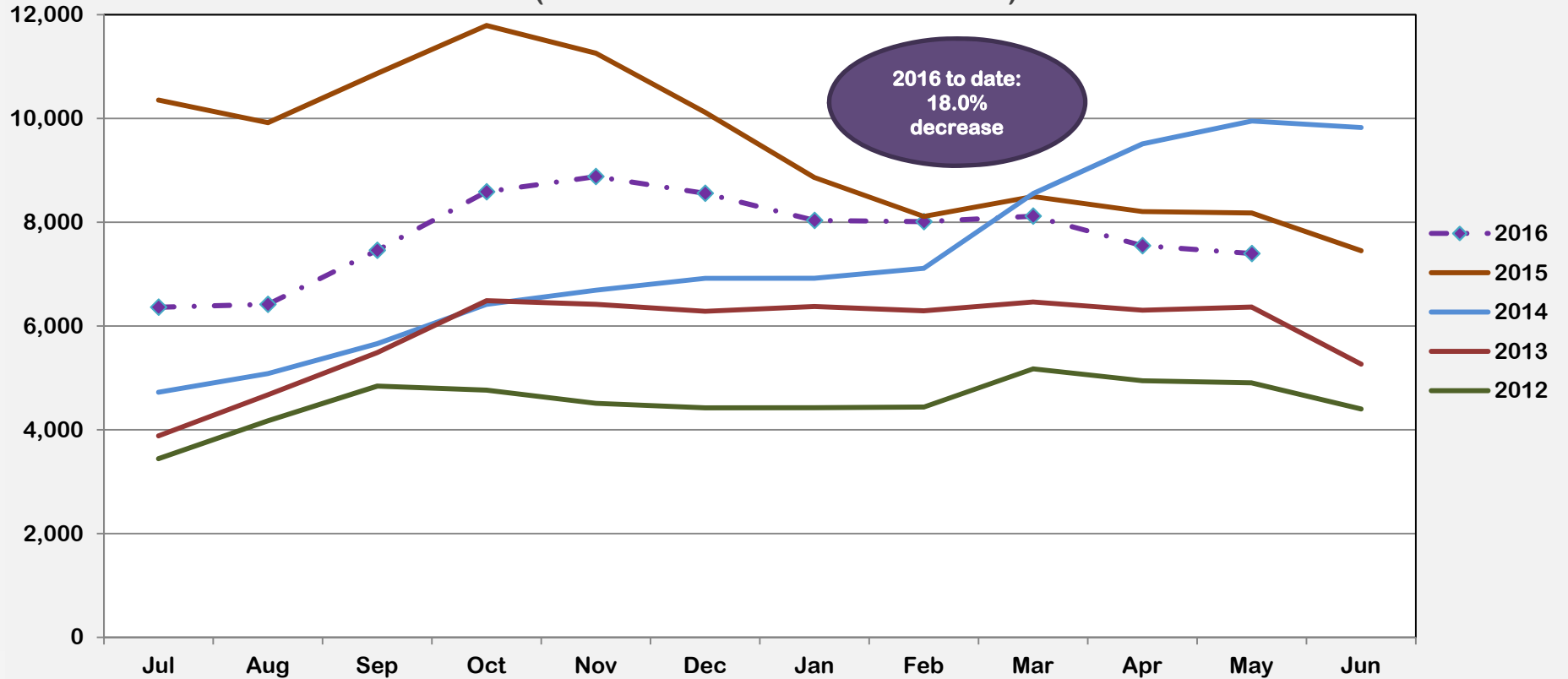


State FY	Jul	Aug	Sep	Oct	Nov	Dec	Jan	Feb	Mar	Apr	May	Jun	Average	% Increase
2016	19,470	19,788	21,943	23,541	23,277	22,947	21,917	22,796	25,076	24,432	24,308		22,519	-7.9%
2015	24,151	23,295	26,176	28,108	26,664	24,857	23,497	22,721	24,293	23,911	23,896	22,124	22,747	32.5%
2014	12,363	12,693	13,715	15,162	16,008	17,416	18,470	19,491	22,662	24,120	25,071	23,905	17,161	23.4%
2013	11,256	13,050	14,878	17,050	16,783	16,119	15,773	15,088	15,355	14,951	15,157	13,355	13,910	10.2%
2012	10,761	12,556	14,045	14,422	14,202	14,002	13,860	14,070	15,411	13,697	13,055	11,944	12,618	5.4%



Division of Family & Children Services

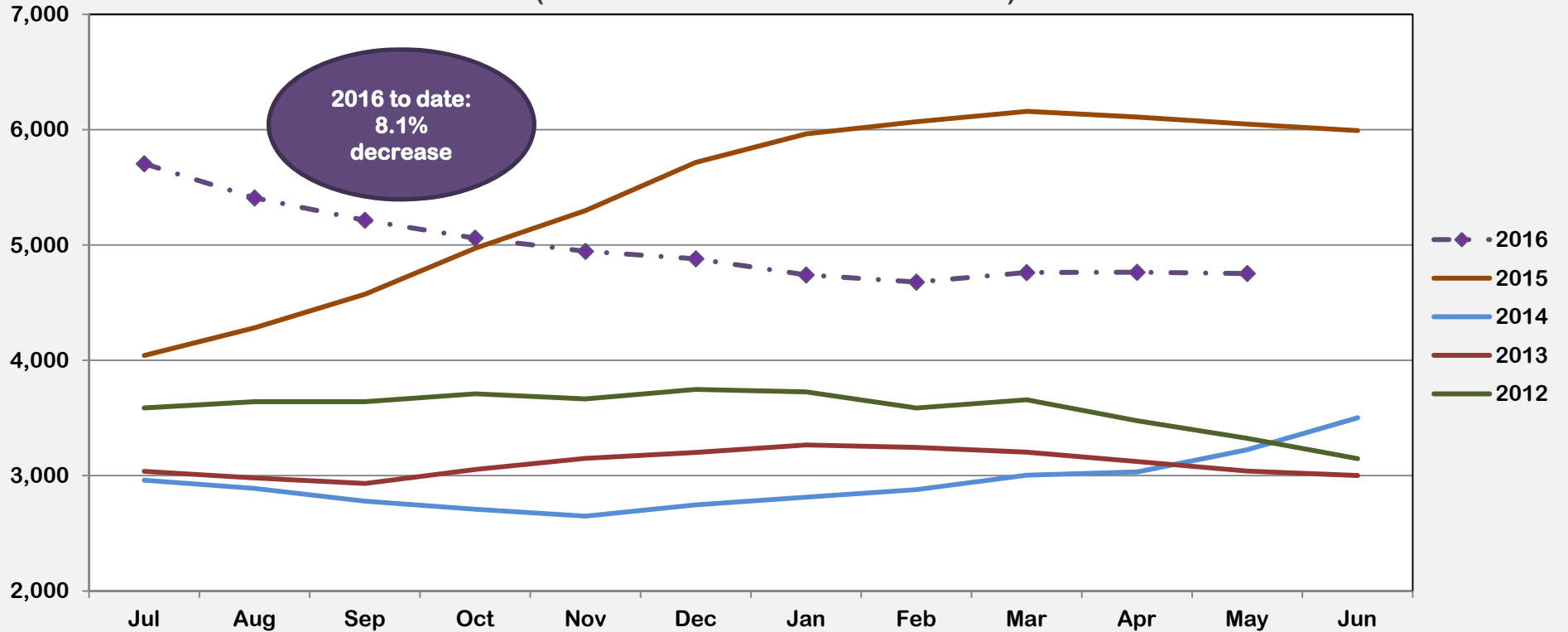
**Outcome IA: Child Protective Services Cases
Family Support Cases Only
(State Fiscal Year 2016 To Date)**



State FY	Jul	Aug	Sep	Oct	Nov	Dec	Jan	Feb	Mar	Apr	May	Jun	Average	% Increase
2016	6,363	6,419	7,460	8,588	8,881	8,558	8,036	8,013	8,118	7,549	7,398		7,762	-18.0%
2015	10,354	9,919	10,866	11,791	11,259	10,117	8,862	8,111	8,494	8,206	8,176	7,450	9,467	30.0%
2014	4,723	5,083	5,658	6,418	6,690	6,919	6,919	7,113	8,552	9,511	9,951	9,826	7,280	24.3%
2013	3,883	4,674	5,487	6,488	6,417	6,284	6,374	6,292	6,463	6,304	6,364	5,265	5,858	29.1%
2012	3,443	4,173	4,842	4,764	4,510	4,423	4,425	4,437	5,174	4,945	4,903	4,402	4,537	-14.7%



Outcome IB: Child Protective Services Cases Family Preservation Cases Only (State Fiscal Year 2016 To Date)

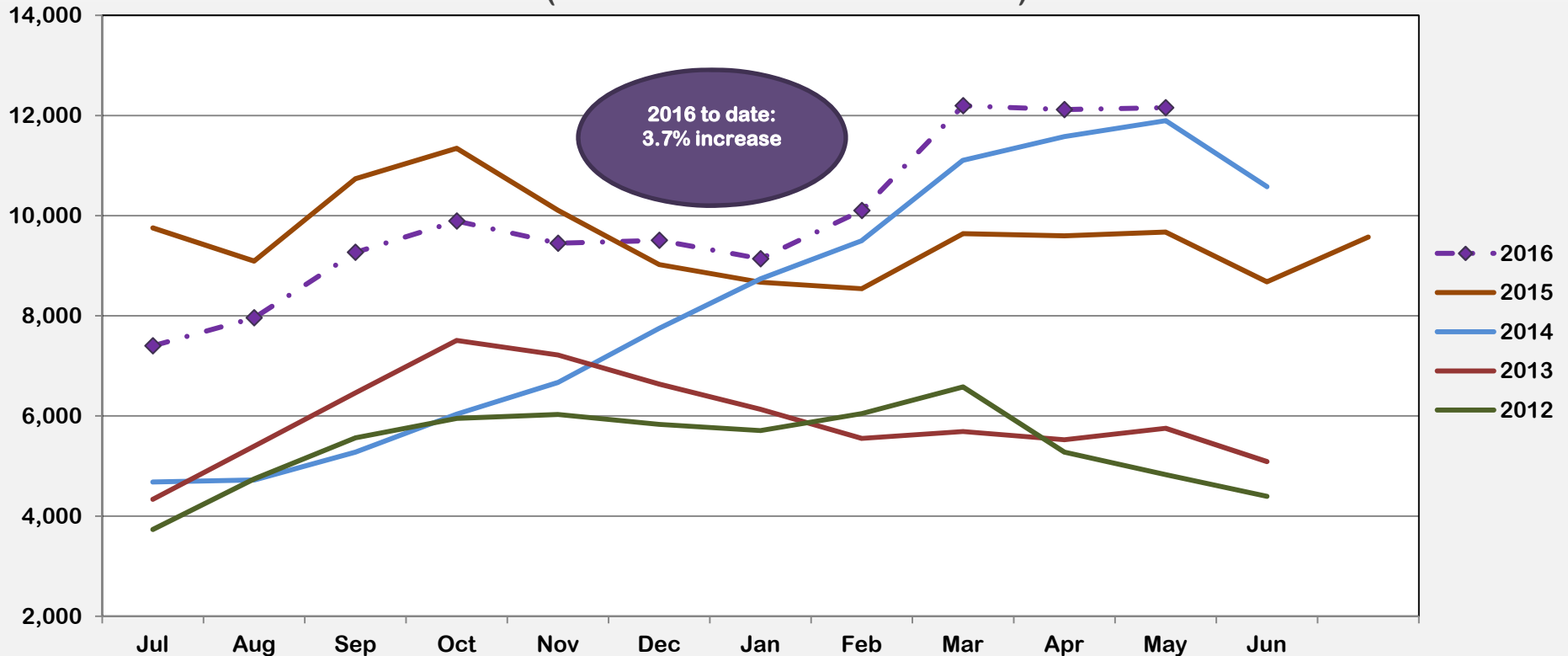


State FY	Jul	Aug	Sep	Oct	Nov	Dec	Jan	Feb	Mar	Apr	May	Jun	Average	% Increase
2016	5,705	5,409	5,215	5,060	4,946	4,881	4,741	4,679	4,762	4,764	4,753		4,992	-8.1%
2015	4,042	4,282	4,573	4,971	5,298	5,716	5,963	6,069	6,158	6,109	6,048	5,992	5,435	85.4%
2014	2,960	2,889	2,779	2,709	2,649	2,746	2,813	2,879	3,004	3,031	3,224	3,501	2,932	-5.5%
2013	3,037	2,980	2,931	3,053	3,150	3,200	3,266	3,244	3,203	3,122	3,040	3,001	3,102	-13.2%
2012	3,586	3,641	3,640	3,709	3,665	3,747	3,726	3,586	3,658	3,476	3,323	3,148	3,575	-5.6%



Division of Family & Children Services

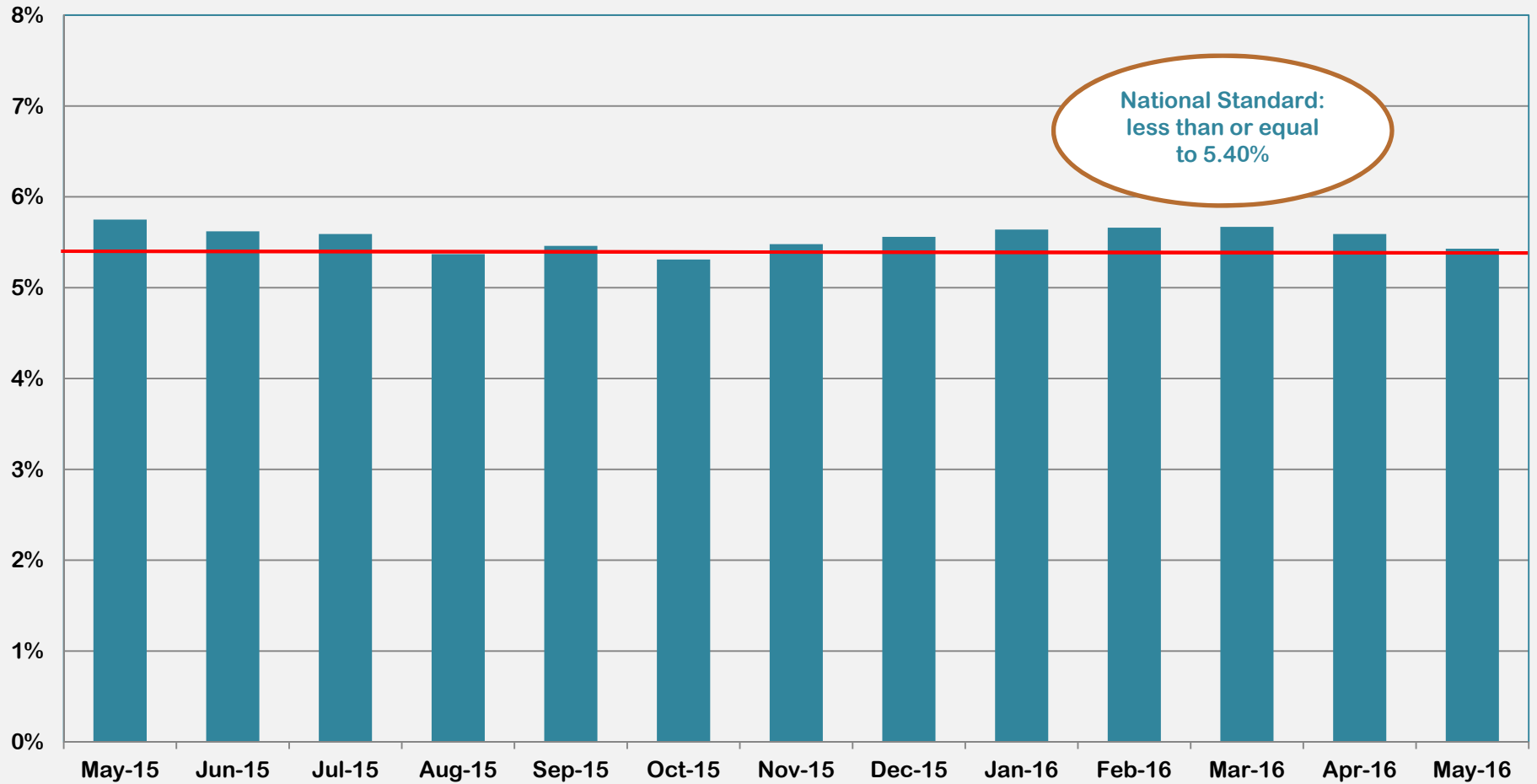
Outcome IC: Child Protective Services Cases Investigation Cases Only (State Fiscal Year 2016 To Date)



State FY	Jul	Aug	Sep	Oct	Nov	Dec	Jan	Feb	Mar	Apr	May	Jun	Average	% Increase
2016	7,402	7,960	9,268	9,893	9,450	9,508	9,140	10,104	12,196	12,119	12,157		9,927	3.7%
2015	9,755	9,093	10,736	11,345	10,106	9,023	8,671	8,540	9,640	9,595	9,671	8,679	9,571	16.6%
2014	4,680	4,721	5,278	6,035	6,669	7,751	8,738	9,499	11,106	11,578	11,896	10,578	8,211	38.2%
2013	4,336	5,396	6,460	7,509	7,216	6,635	6,133	5,552	5,689	5,525	5,753	5,089	5,941	10.2%
2012	3,732	4,742	5,563	5,949	6,027	5,832	5,709	6,047	6,579	5,276	4,829	4,394	5,390	45.7%



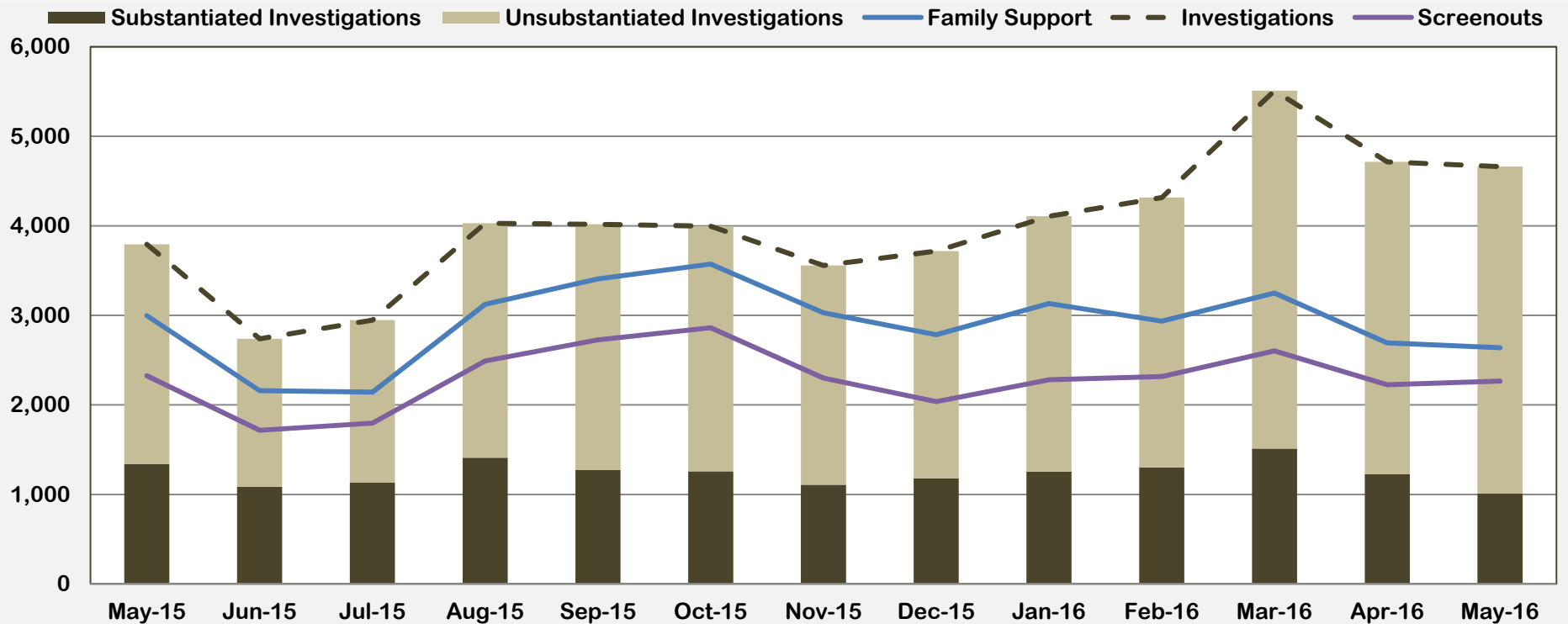
Outcome II: Recurrence of Substantiated Child Maltreatment (May 2015 – May 2016)



May-15	Jun-15	Jul-15	Aug-15	Sep-15	Oct-15	Nov-15	Dec-15	Jan-16	Feb-16	Mar-16	Apr-16	May-16
5.75%	5.62%	5.59%	5.37%	5.46%	5.31%	5.48%	5.56%	5.64%	5.66%	5.67%	5.59%	5.43%



Outcome III: Disposition of Child Abuse and Neglect Reports (May 2015 - May 2016)

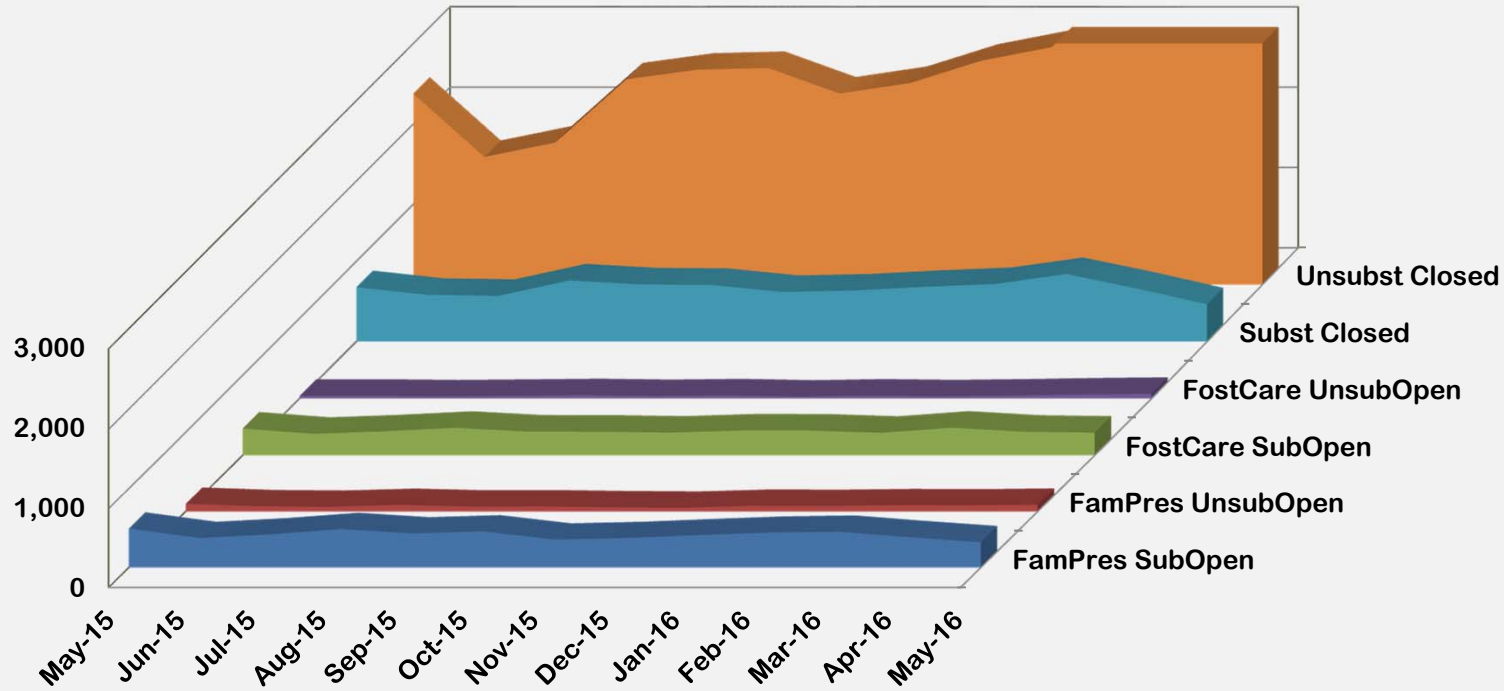


	May-15	Jun-15	Jul-15	Aug-15	Sep-15	Oct-15	Nov-15	Dec-15	Jan-16	Feb-16	Mar-16	Apr-16	May-16
Family Support	2,997	2,158	2,142	3,123	3,408	3,572	3,029	2,783	3,132	2,935	3,249	2,692	2,638
Screenouts	2,326	1,716	1,797	2,491	2,726	2,862	2,299	2,037	2,280	2,316	2,604	2,224	2,265
Investigations	3,794	2,739	2,947	4,029	4,018	3,997	3,557	3,718	4,108	4,316	5,510	4,715	4,662
Substantiated Investigations	1,340	1,085	1,134	1,410	1,272	1,258	1,108	1,180	1,254	1,302	1,512	1,225	1,012
Unsubstantiated Investigations	2,454	1,654	1,813	2,619	2,746	2,739	2,449	2,538	2,854	3,014	3,998	3,490	3,650



Division of Family & Children Services

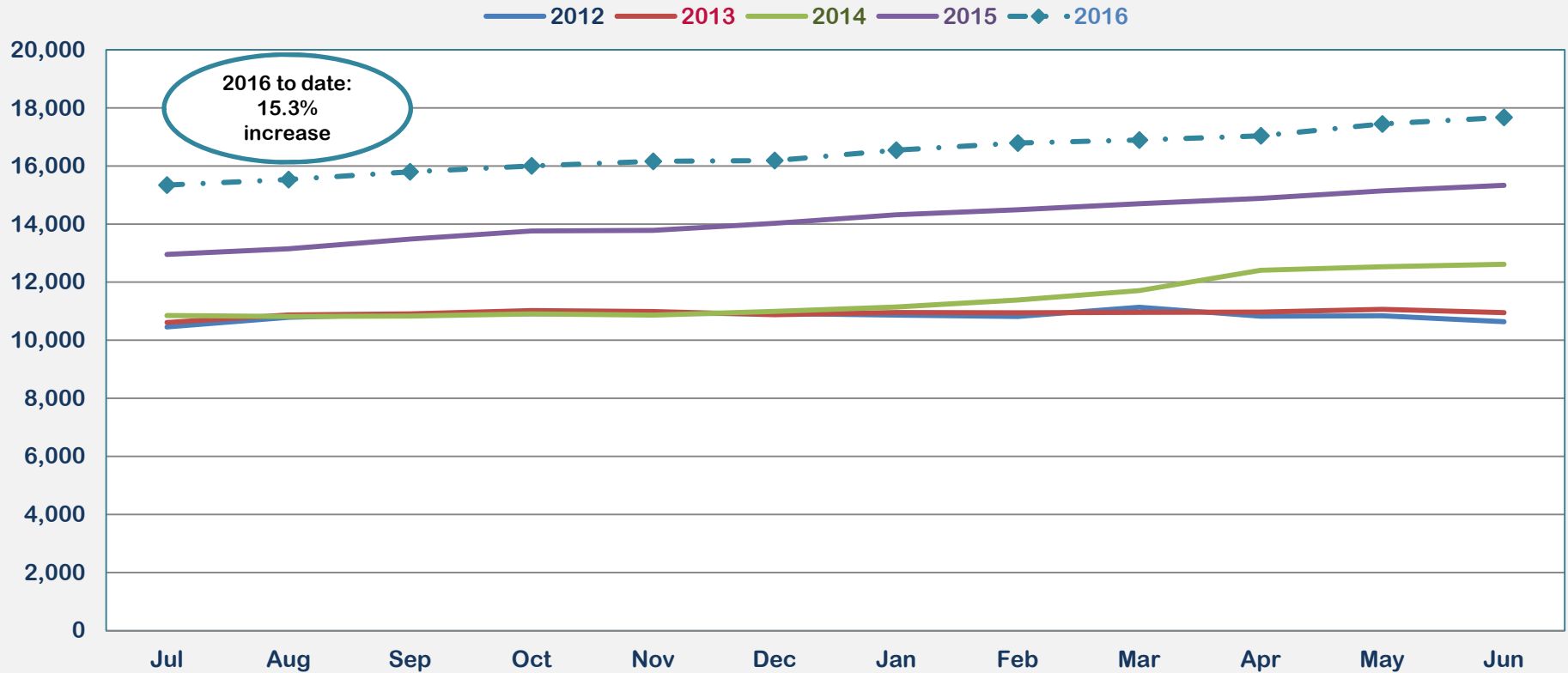
Outcome IV: Subsequent Case-Types of Investigations (May 2015 – May 2016)



	May-15	Jun-15	Jul-15	Aug-15	Sep-15	Oct-15	Nov-15	Dec-15	Jan-16	Feb-16	Mar-16	Apr-16	May-16
FamPres SubOpen	494	374	421	488	432	458	354	374	410	442	454	384	321
FamPres UnsubOpen	98	67	60	84	63	65	54	48	73	70	80	77	86
FostCare SubOpen	337	271	303	346	299	298	286	313	312	284	348	297	286
FostCare UnsubOpen	33	35	27	34	42	31	40	24	37	28	37	51	59
Subst Closed	678	582	570	762	712	706	618	636	682	717	842	660	464
Unsubst Closed	2,377	1,589	1,769	2,555	2,676	2,697	2,379	2,510	2,787	2,958	3,914	3,406	3,541



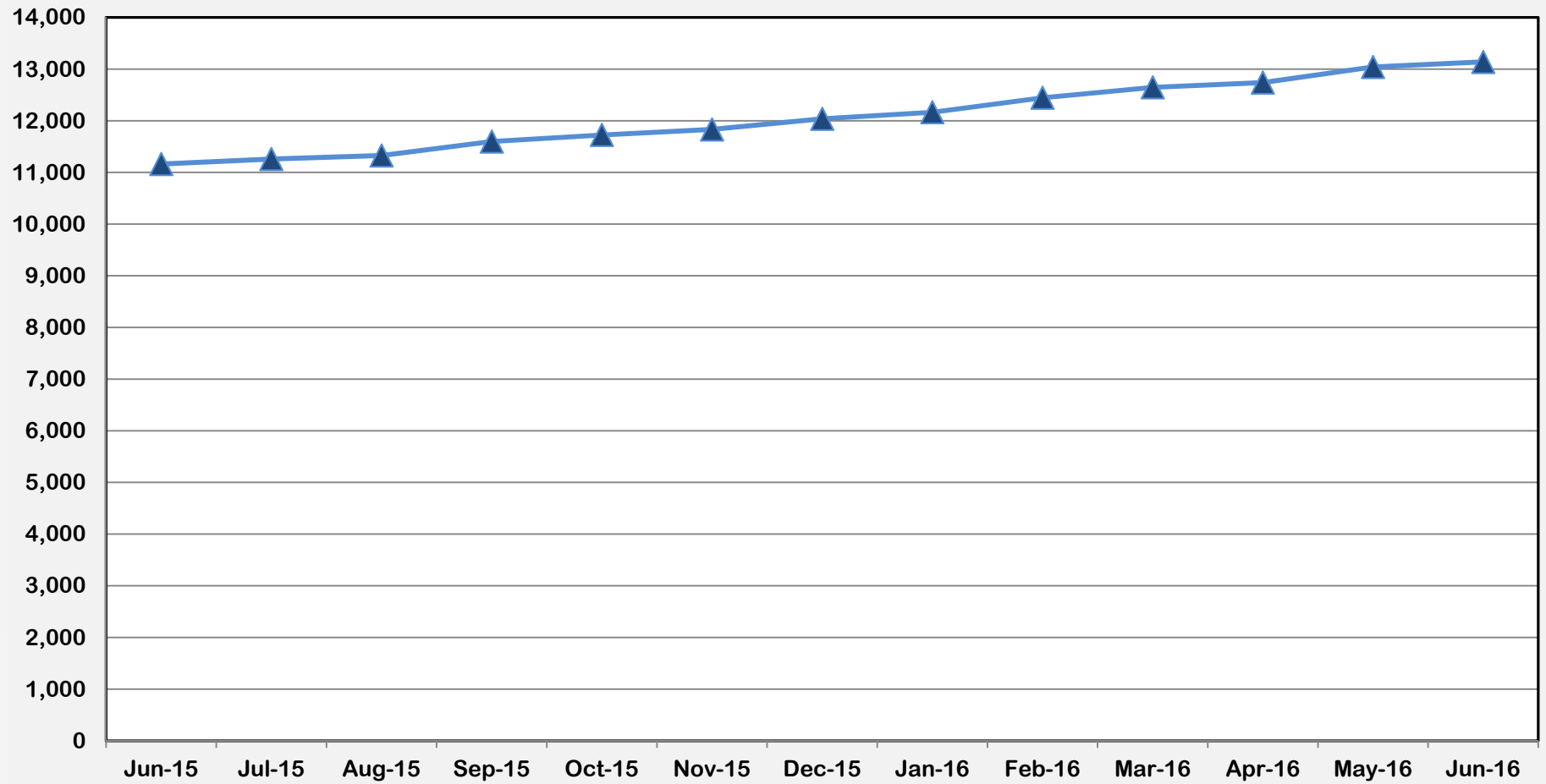
Outcome V: Number of Children in Placement Services (State Fiscal Year 2016)



State FY	Jul	Aug	Sep	Oct	Nov	Dec	Jan	Feb	Mar	Apr	May	Jun	Average	% Increase
2016	15,344	15,534	15,802	16,004	16,164	16,189	16,547	16,792	16,896	17,041	17,449	17,674	16,453	16.1%
2015	12,952	13,147	13,484	13,763	13,779	14,028	14,320	14,489	14,699	14,883	15,142	15,334	14,168	24.1%
2014	10,847	10,817	10,828	10,903	10,861	10,992	11,139	11,384	11,707	12,410	12,527	12,611	11,419	4.5%
2013	10,610	10,871	10,907	11,016	10,984	10,875	10,951	10,944	10,955	10,966	11,063	10,948	10,924	0.8%
2012	10,457	10,788	10,893	10,908	10,917	10,919	10,863	10,813	11,135	10,823	10,839	10,634	10,832	8.0%



Outcome VI: Children in DFCS Custody Under the Age of 18 (June 2015 – June 2016)

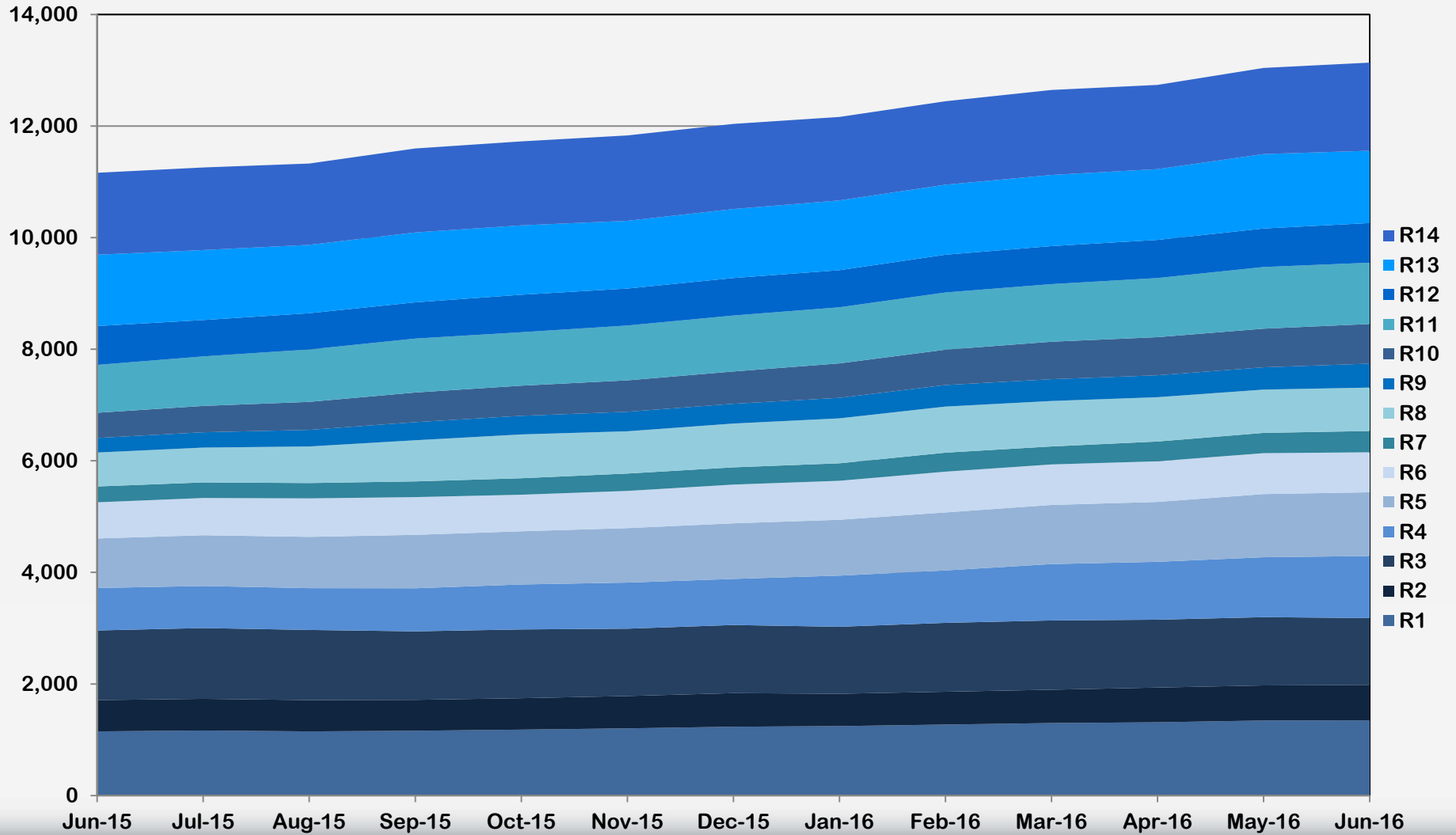


Jun-15	Jul-15	Aug-15	Sep-15	Oct-15	Nov-15	Dec-15	Jan-16	Feb-16	Mar-16	Apr-16	May-16	Jun-16
11,161	11,258	11,327	11,597	11,725	11,831	12,038	12,164	12,445	12,646	12,738	13,041	13,137

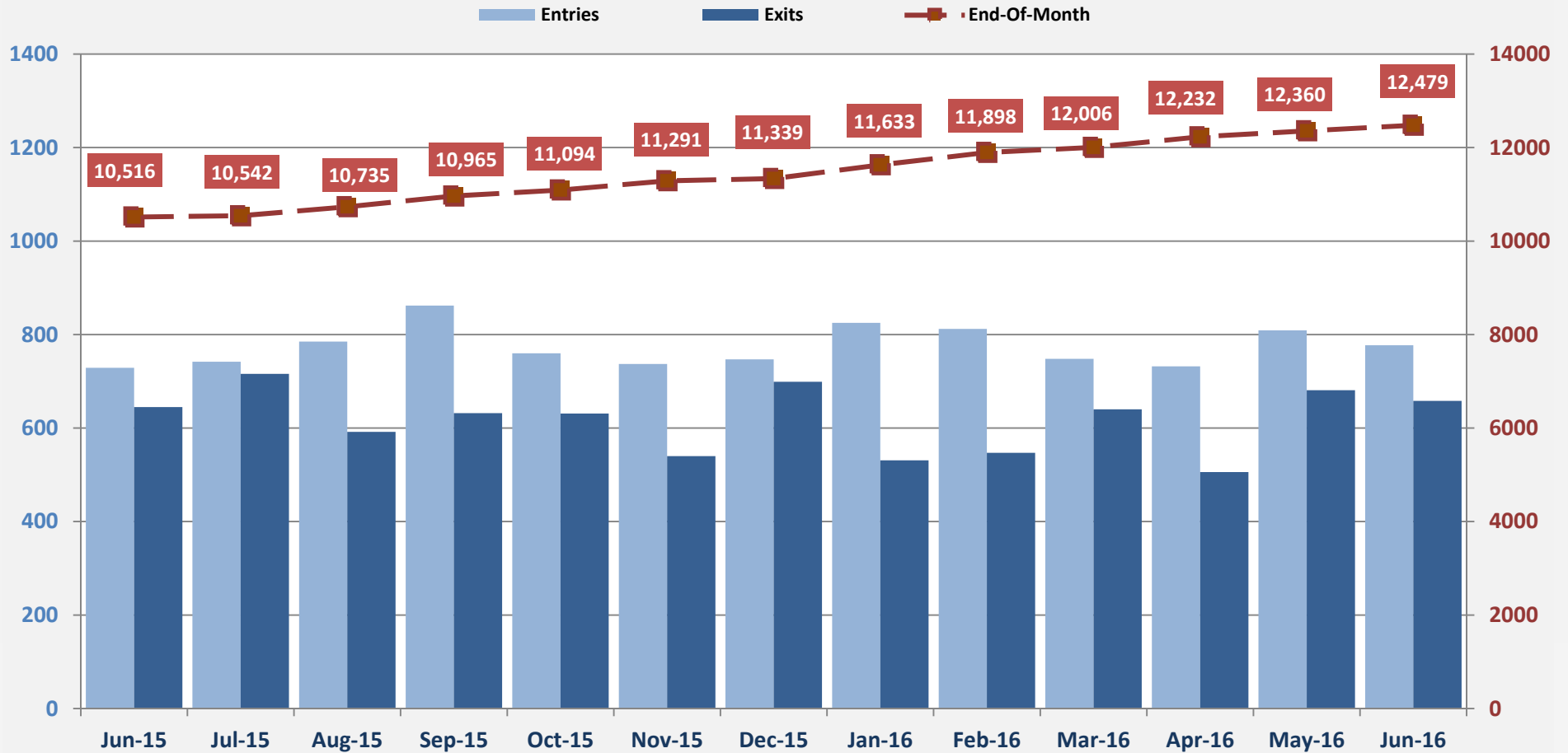


Division of Family & Children Services

Outcome VI-A: Children in DFCS Custody Under the Age of 18 - (Regional) (June 2015 – June 2016)



Outcome VII: Comparison of Foster Care Entries and Exits (June 2015 – June 2016)

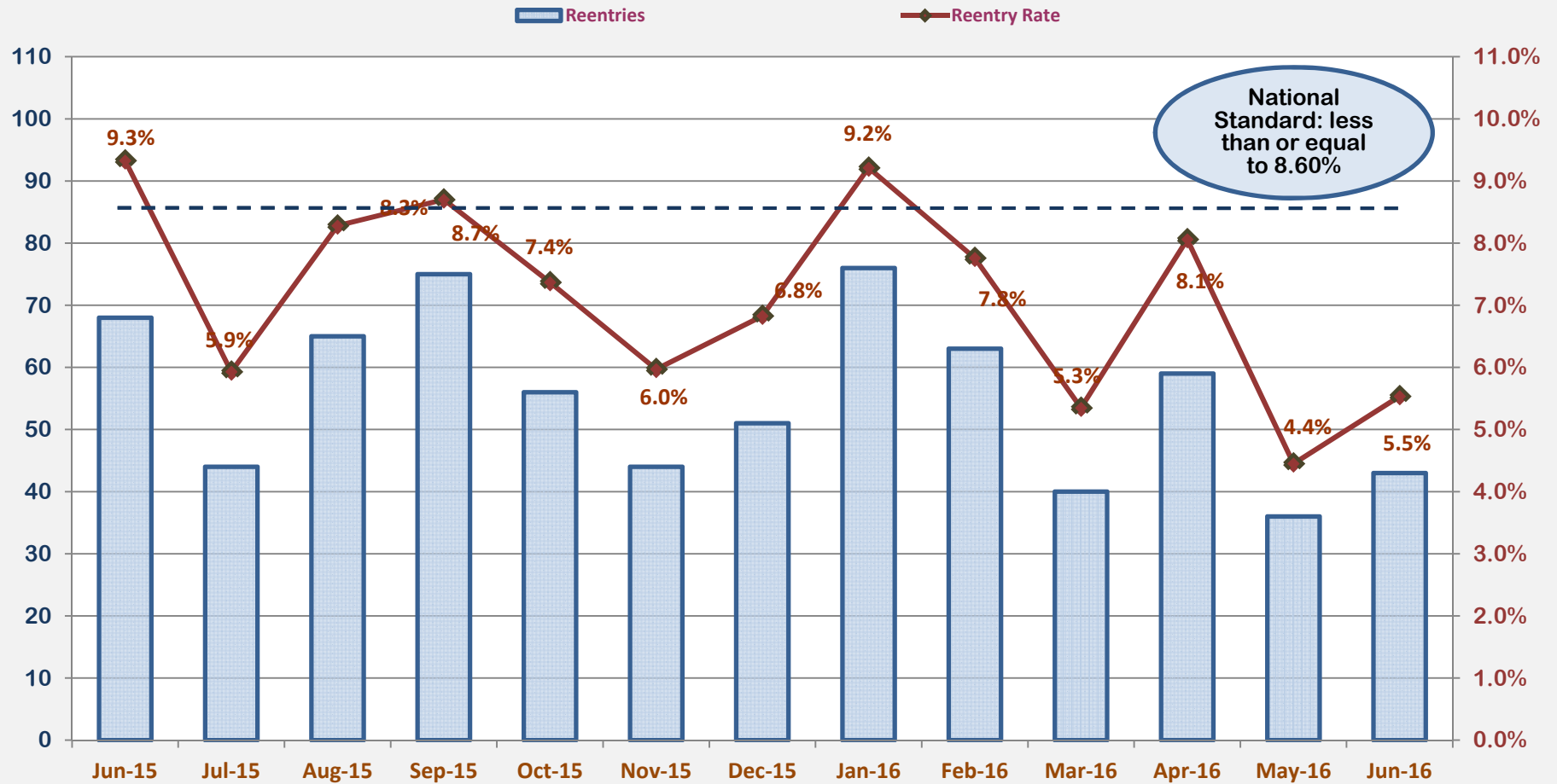


Jun-15	Jul-15	Aug-15	Sep-15	Oct-15	Nov-15	Dec-15	Jan-16	Feb-16	Mar-16	Apr-16	May-16	Jun-16
729	742	785	862	760	737	747	825	812	748	732	809	777
645	716	592	632	631	540	699	531	547	640	506	681	658



Division of Family & Children Services

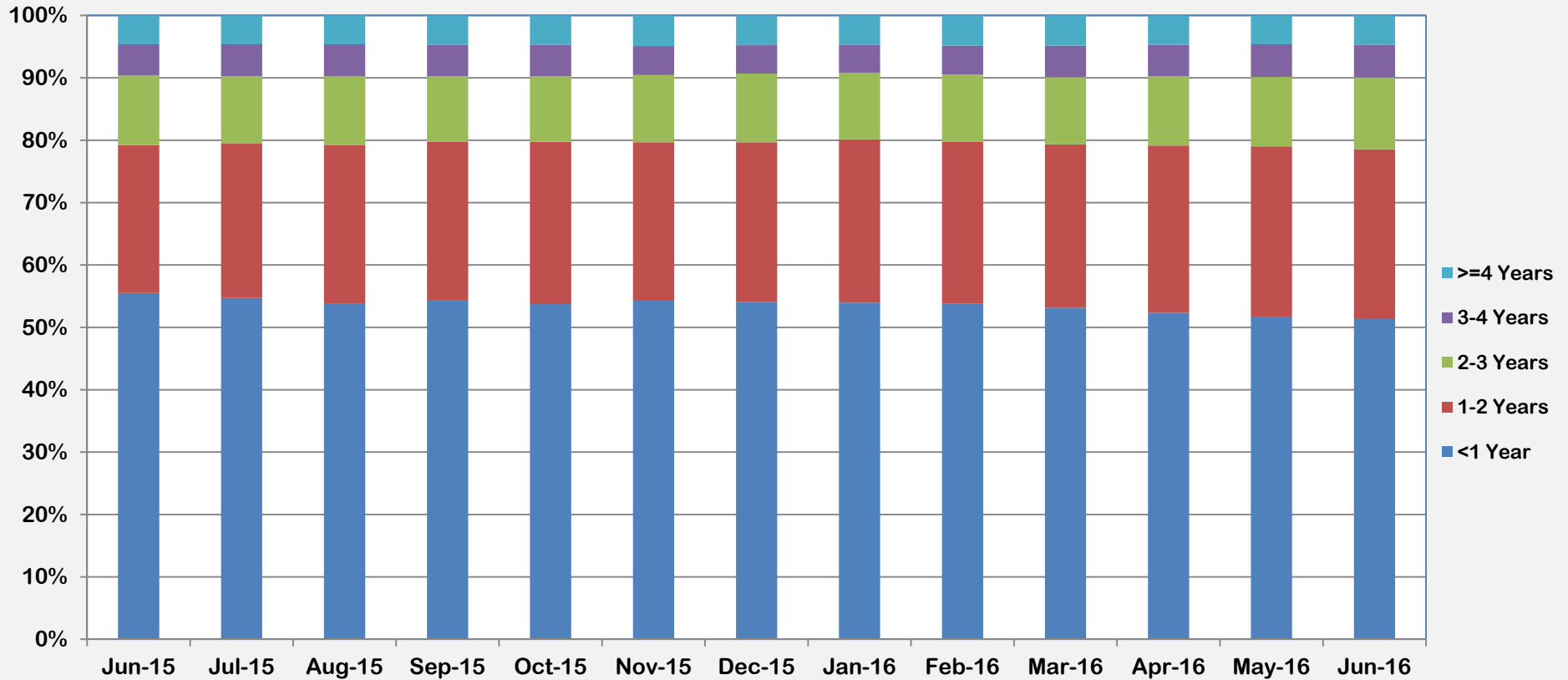
Outcome VII: Foster Care Re-Entries (June 2015 – June 2016)



Jun-15	Jul-15	Aug-15	Sep-15	Oct-15	Nov-15	Dec-15	Jan-16	Feb-16	Mar-16	Apr-16	May-16	Jun-16
68	44	65	75	56	44	51	76	63	40	59	36	43
9.3%	5.9%	8.3%	8.7%	7.4%	6.0%	6.8%	9.2%	7.8%	5.3%	8.1%	4.4%	5.5%



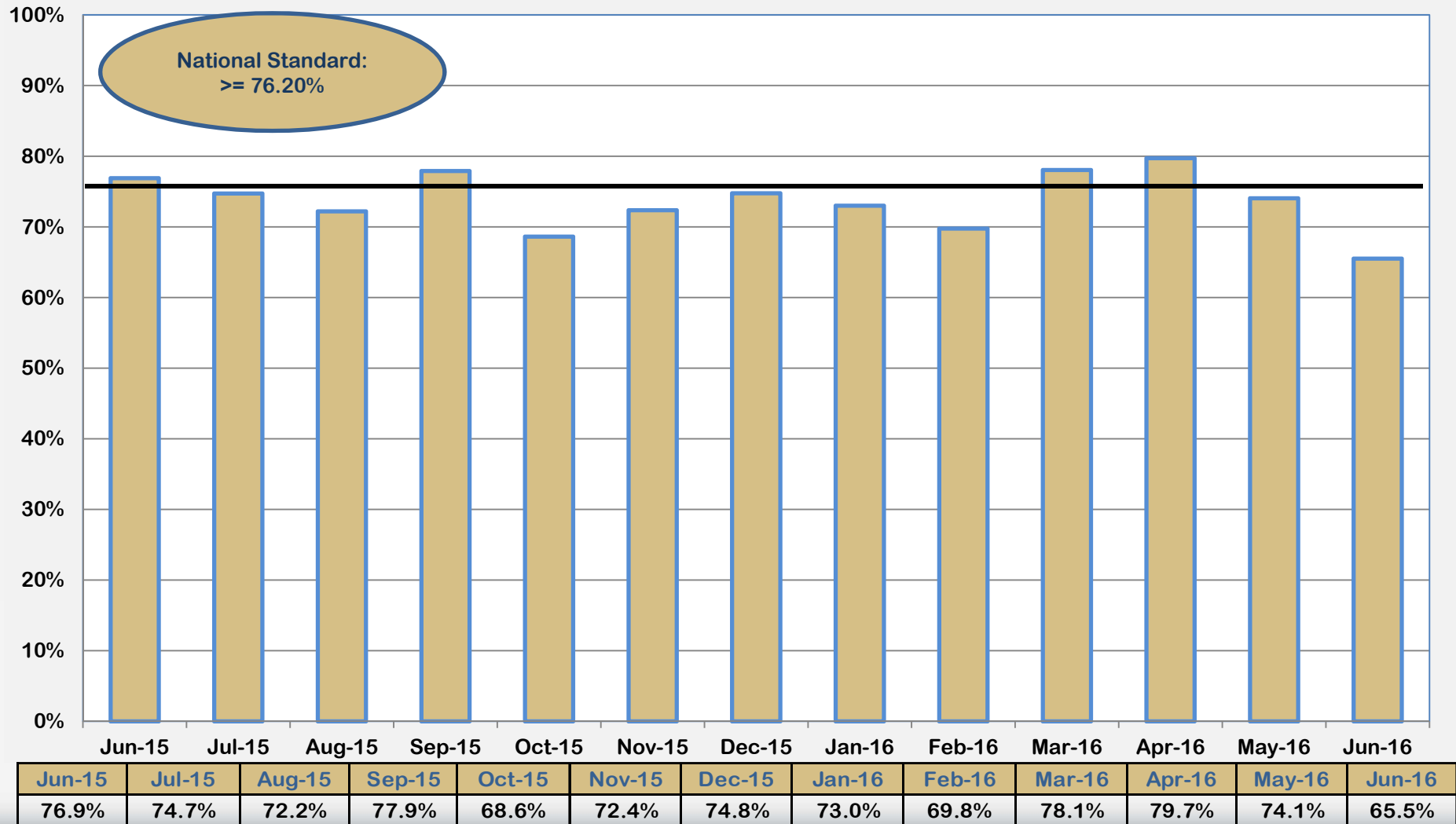
Outcome VIII: Foster Care Length of Stay (June 2015 – June 2016)



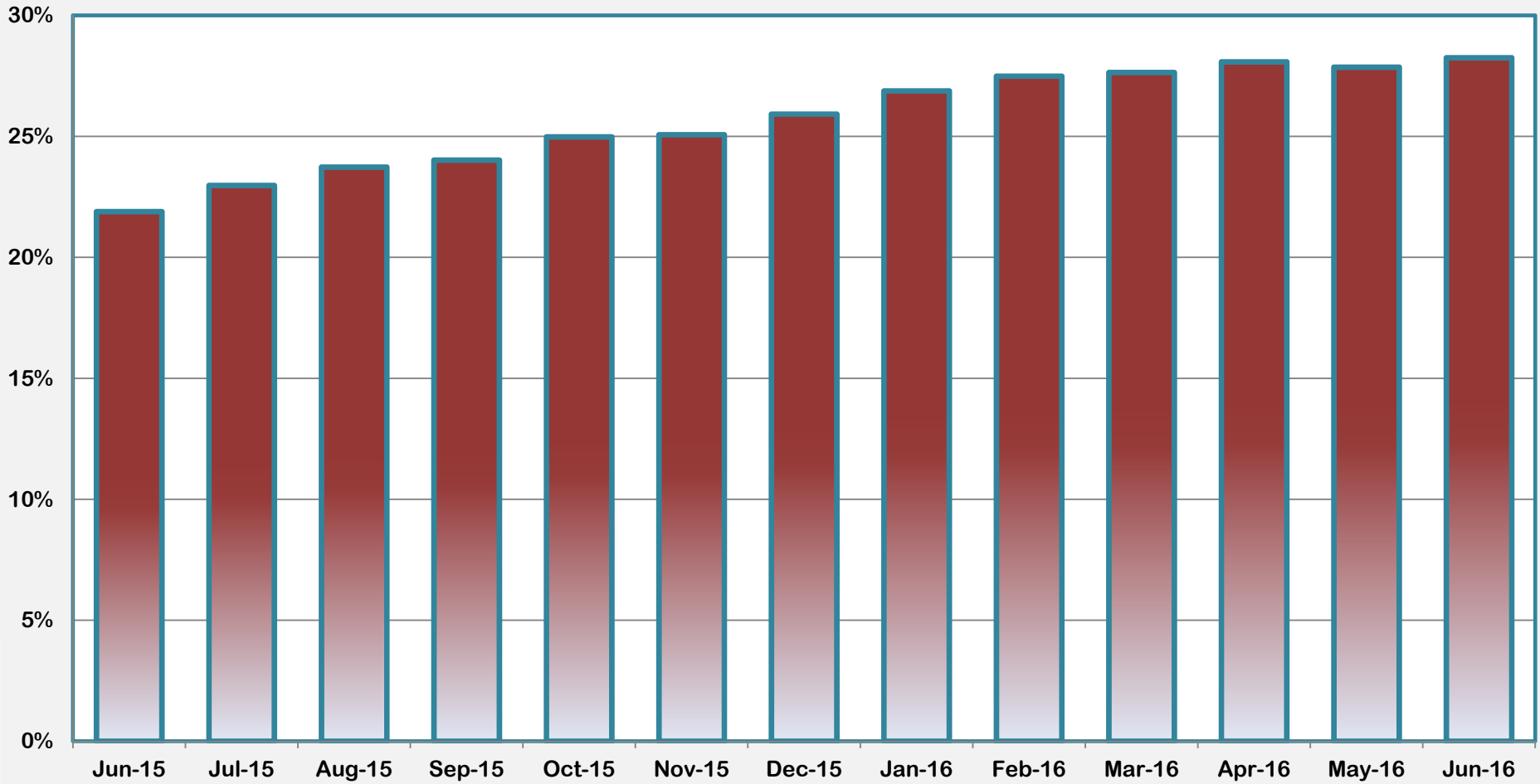
	Jun-15	Jul-15	Aug-15	Sep-15	Oct-15	Nov-15	Dec-15	Jan-16	Feb-16	Mar-16	Apr-16	May-16	Jun-16
>=4 Years	4.6%	4.6%	4.6%	4.7%	4.7%	4.9%	4.8%	4.7%	4.8%	4.8%	4.7%	4.6%	4.7%
3 - <4 Years	5.0%	5.1%	5.2%	5.0%	5.0%	4.6%	4.5%	4.5%	4.6%	5.1%	5.0%	5.2%	5.3%
2 - <3 Years	11.1%	10.8%	11.0%	10.6%	10.5%	10.8%	11.0%	10.6%	10.8%	10.8%	11.1%	11.1%	11.5%
1 - <2 Years	23.7%	24.7%	25.3%	25.4%	26.0%	25.4%	25.6%	26.2%	25.9%	26.2%	26.8%	27.3%	27.2%
<1 Year	55.5%	54.7%	53.9%	54.3%	53.7%	54.3%	54.1%	54.0%	53.8%	53.1%	52.3%	51.7%	51.3%



Outcome IX: Length of Time to Reunification (June 2015 – June 2016)



Outcome X: Percent of Children Placed with Relatives (June 2015 – June 2016)

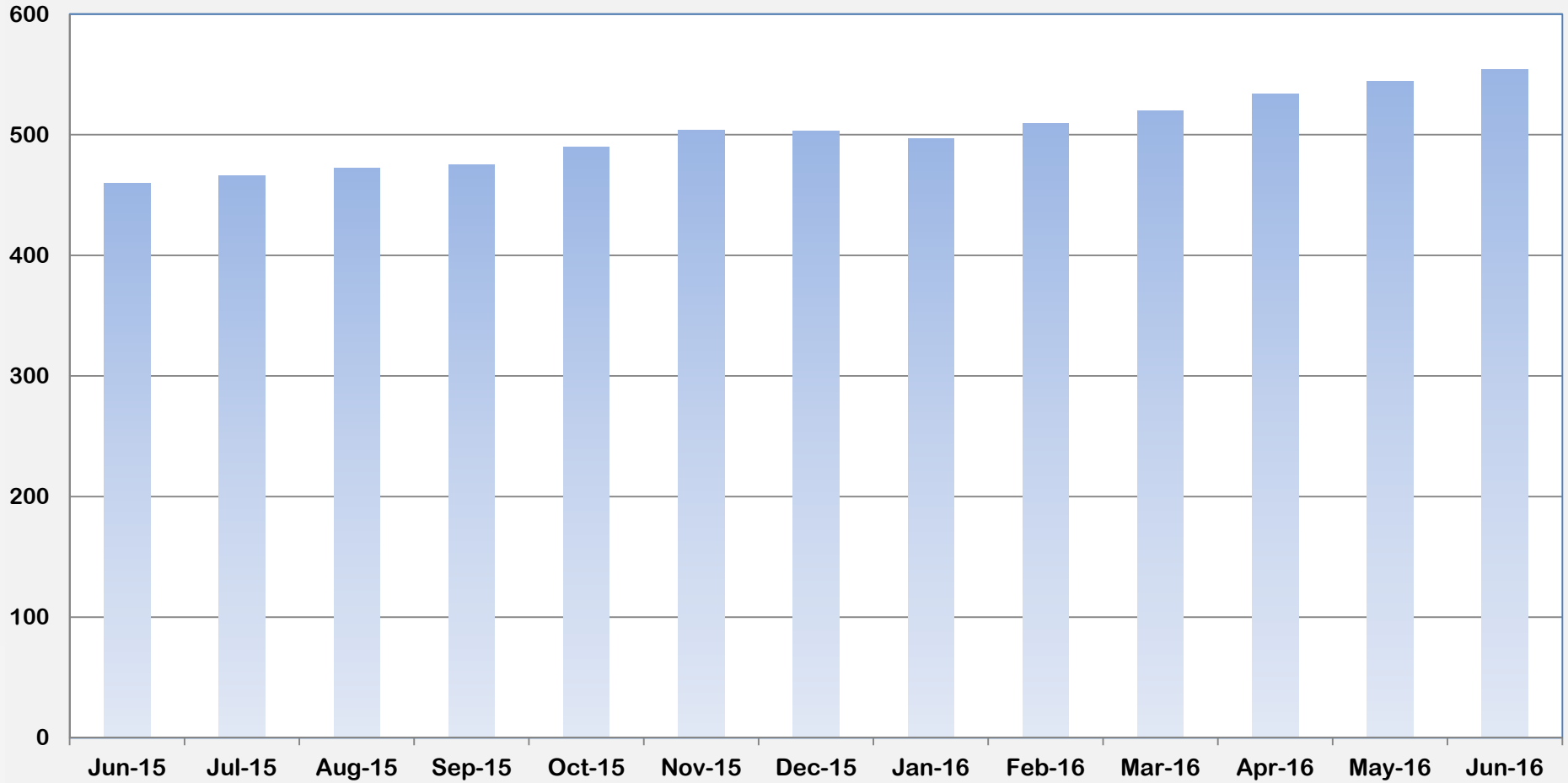


Jun-15	Jul-15	Aug-15	Sep-15	Oct-15	Nov-15	Dec-15	Jan-16	Feb-16	Mar-16	Apr-16	May-16	Jun-16
21.9%	23.0%	23.7%	24.0%	25.0%	25.1%	25.9%	26.9%	27.5%	27.6%	28.1%	27.9%	28.3%



Division of Family & Children Services

Outcome XI: Extended Youth Services (June 2015 – June 2016)

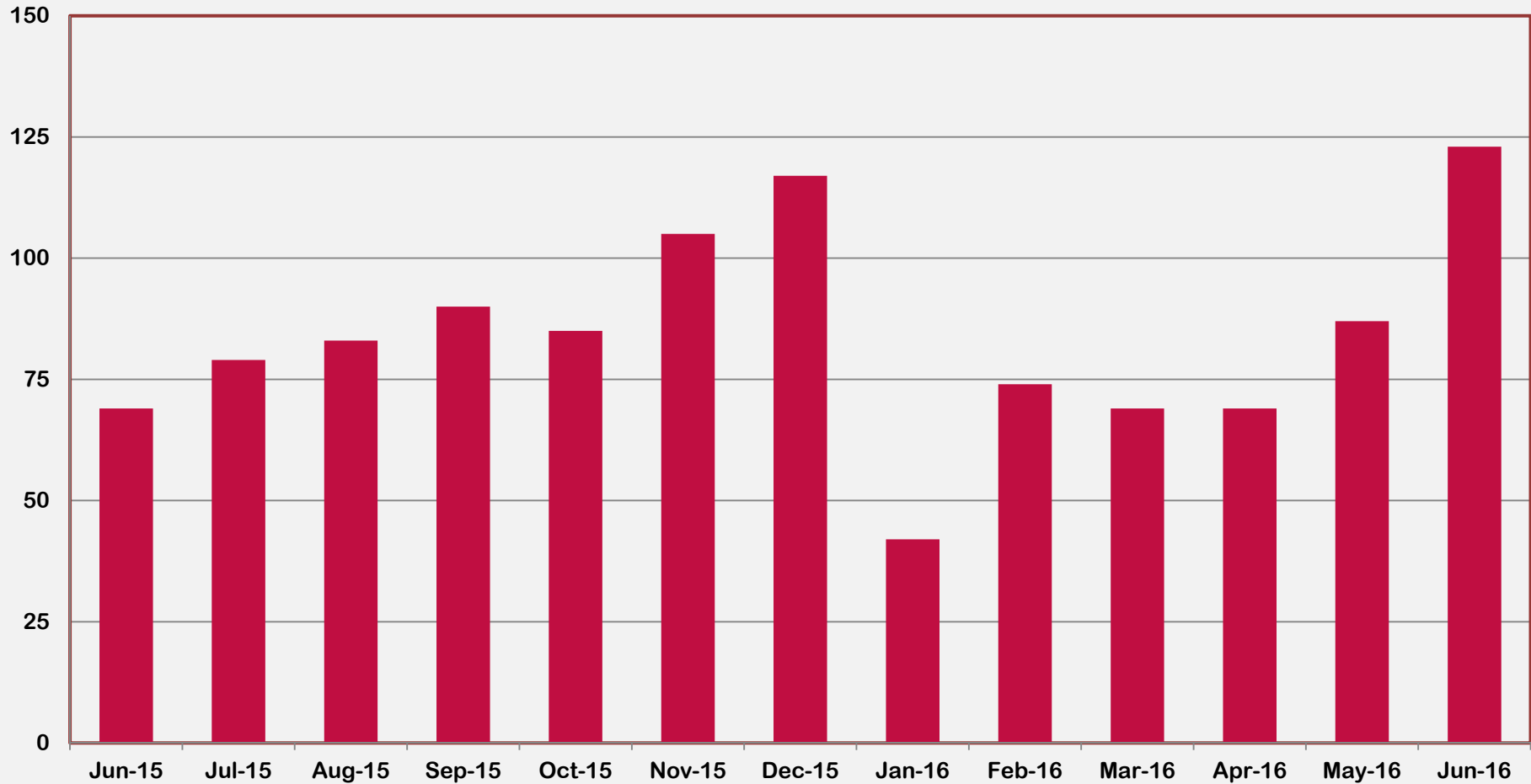


Jun-15	Jul-15	Aug-15	Sep-15	Oct-15	Nov-15	Dec-15	Jan-16	Feb-16	Mar-16	Apr-16	May-16	Jun-16
460	466	472	475	490	504	503	497	509	520	534	544	554



Division of Family & Children Services

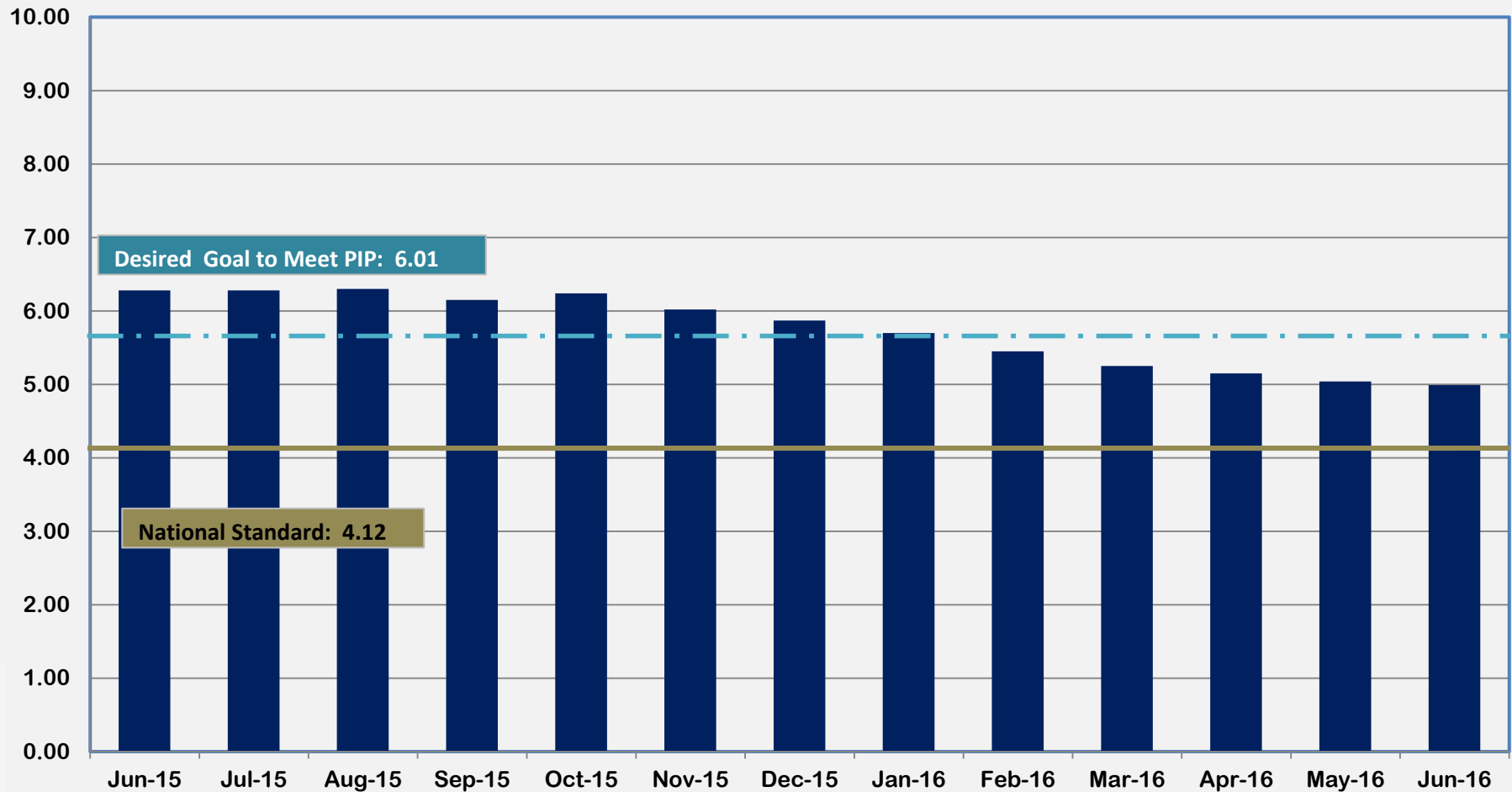
Outcome XII: Number of Finalized Adoptions (June 2015 – June 2016)



Jun-15	Jul-15	Aug-15	Sep-15	Oct-15	Nov-15	Dec-15	Jan-16	Feb-16	Mar-16	Apr-16	May-16	Jun-16
69	79	83	90	85	105	117	42	74	69	69	87	123



Outcome XIII: Placement Stability Performance Coefficient (June 2015 - June 2016)



Jun-15	Jul-15	Aug-15	Sep-15	Oct-15	Nov-15	Dec-15	Jan-16	Feb-16	Mar-16	Apr-16	May-16	Jun-16
6.28	6.28	6.30	6.15	6.24	6.02	5.87	5.70	5.45	5.25	5.15	5.04	4.99



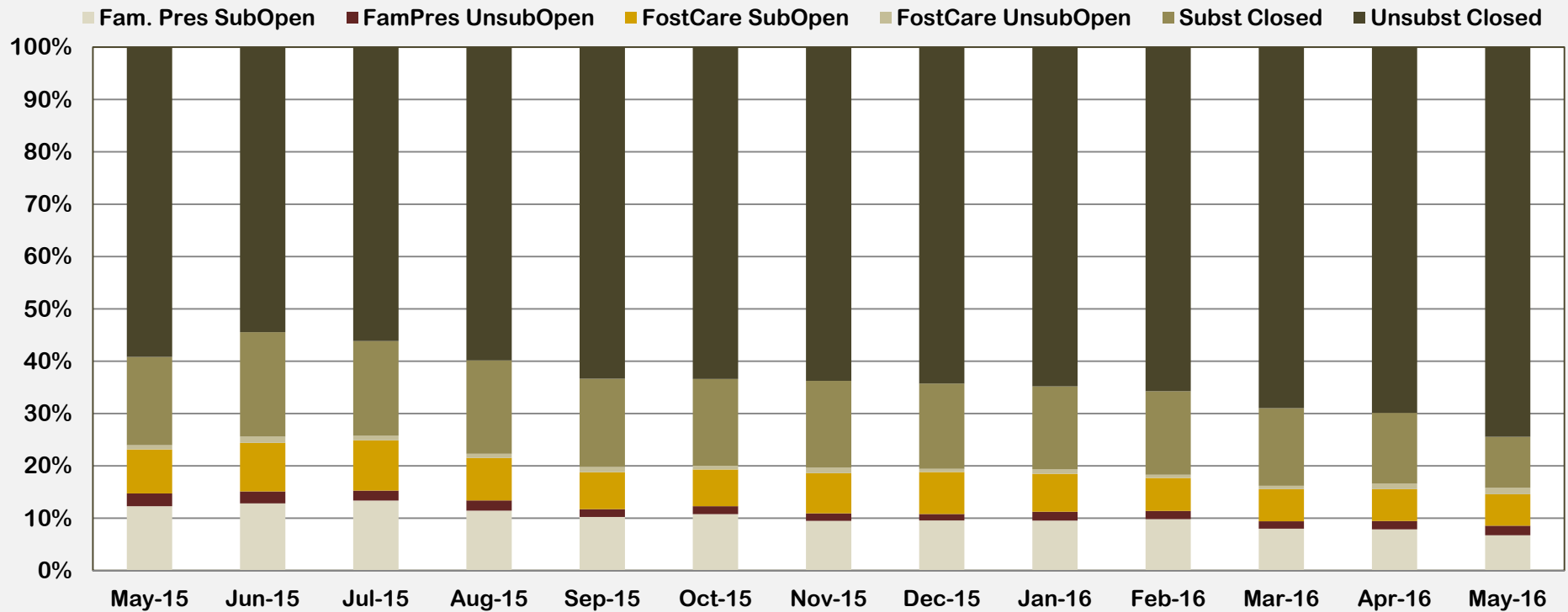
Appendices



Division of Family & Children Services

Appendix A

Outcome IV: Subsequent Case-Type of Investigations by Disposition (May 2015 – May 2016)



	May-15	Jun-15	Jul-15	Aug-15	Sep-15	Oct-15	Nov-15	Dec-15	Jan-16	Feb-16	Mar-16	Apr-16	May-16
Fam. Pres SubOpen	12.3%	12.8%	13.4%	11.4%	10.2%	10.8%	9.5%	9.6%	9.5%	9.8%	8.0%	7.9%	6.7%
FamPres UnsubOpen	2.4%	2.3%	1.9%	2.0%	1.5%	1.5%	1.4%	1.2%	1.7%	1.6%	1.4%	1.6%	1.8%
FostCare SubOpen	8.4%	9.3%	9.6%	8.1%	7.1%	7.0%	7.7%	8.0%	7.3%	6.3%	6.1%	6.1%	6.0%
FostCare UnsubOpen	0.8%	1.2%	0.9%	0.8%	1.0%	0.7%	1.1%	0.6%	0.9%	0.6%	0.7%	1.0%	1.2%
Subst Closed	16.9%	19.9%	18.1%	17.8%	16.9%	16.6%	16.6%	16.3%	15.9%	15.9%	14.8%	13.5%	9.8%
Unsubst Closed	59.2%	54.5%	56.2%	59.9%	63.4%	63.4%	63.8%	64.3%	64.8%	65.7%	69.0%	69.9%	74.4%



APPENDIX B

Regional Graphs of Outcome VI

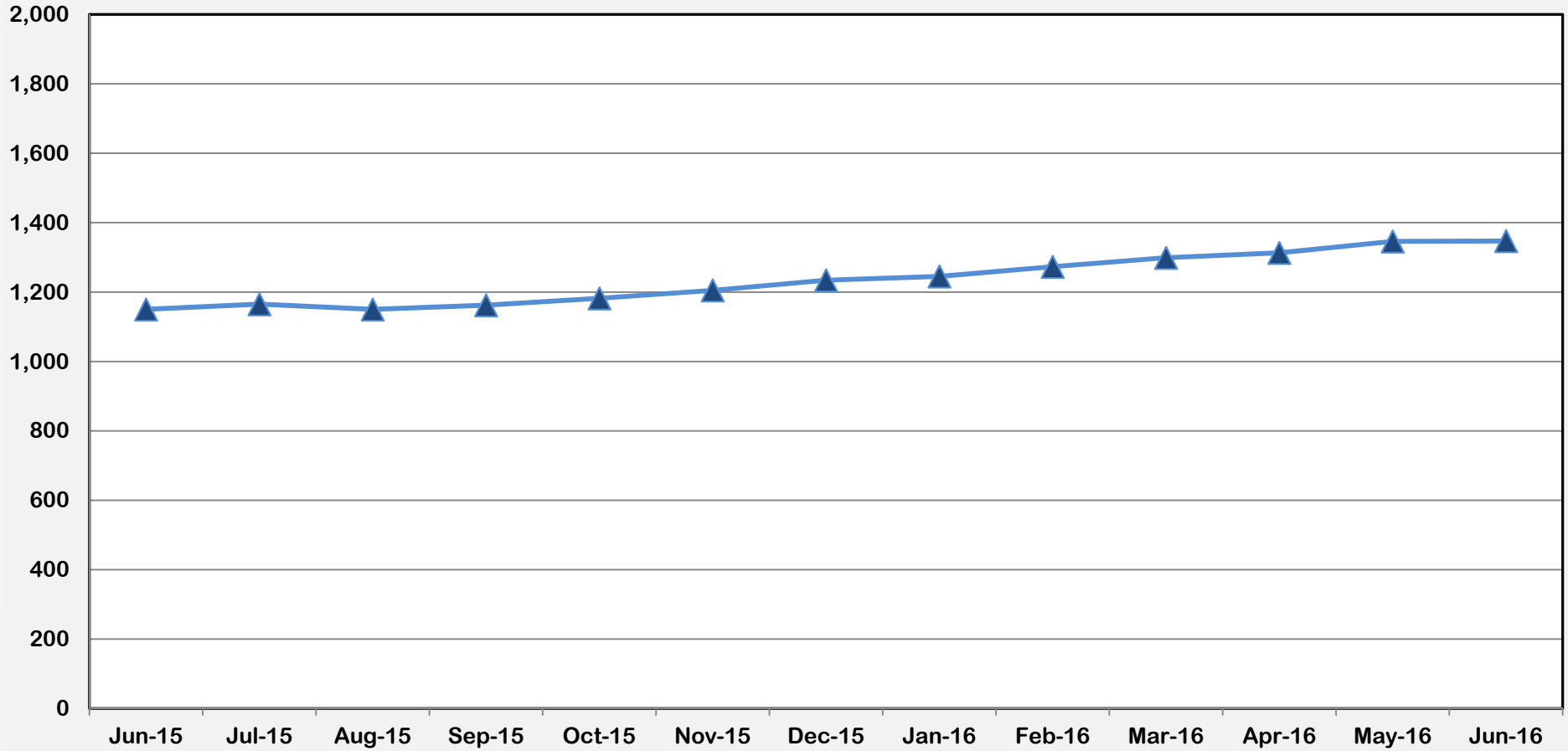
Children in DFCS Custody Under the Age of 18
(June 2015 – June 2016)



Division of Family & Children Services

Outcome VI: Children in DFCS Custody Under the Age of 18
(June 2015 – June 2016)

Region I

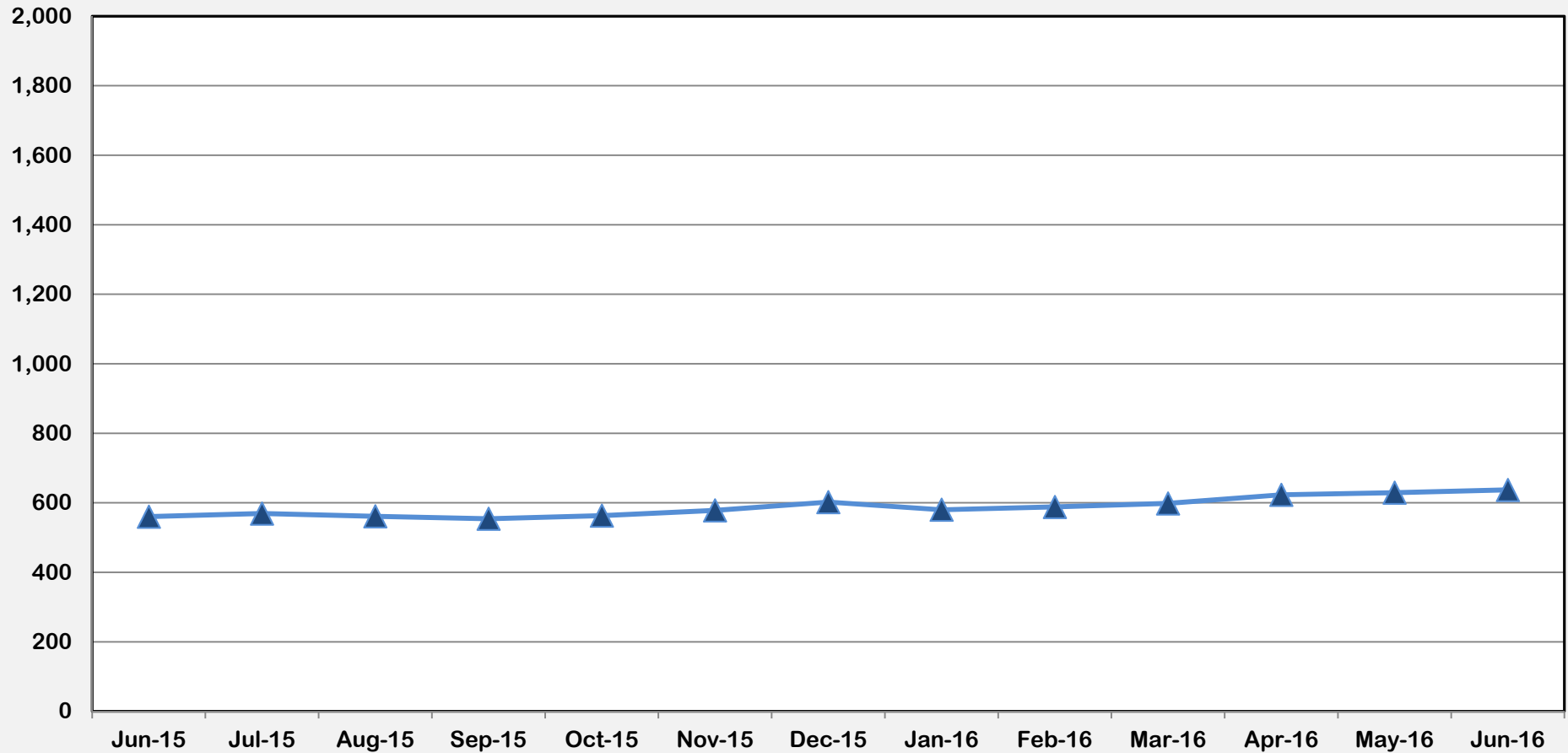


Jun-15	Jul-15	Aug-15	Sep-15	Oct-15	Nov-15	Dec-15	Jan-16	Feb-16	Mar-16	Apr-16	May-16	Jun-16
1,150	1,165	1,150	1,162	1,182	1,205	1,234	1,245	1,273	1,299	1,313	1,346	1,347



Outcome VI: Children in DFCS Custody Under the Age of 18
(June 2015 – June 2016)

Region II

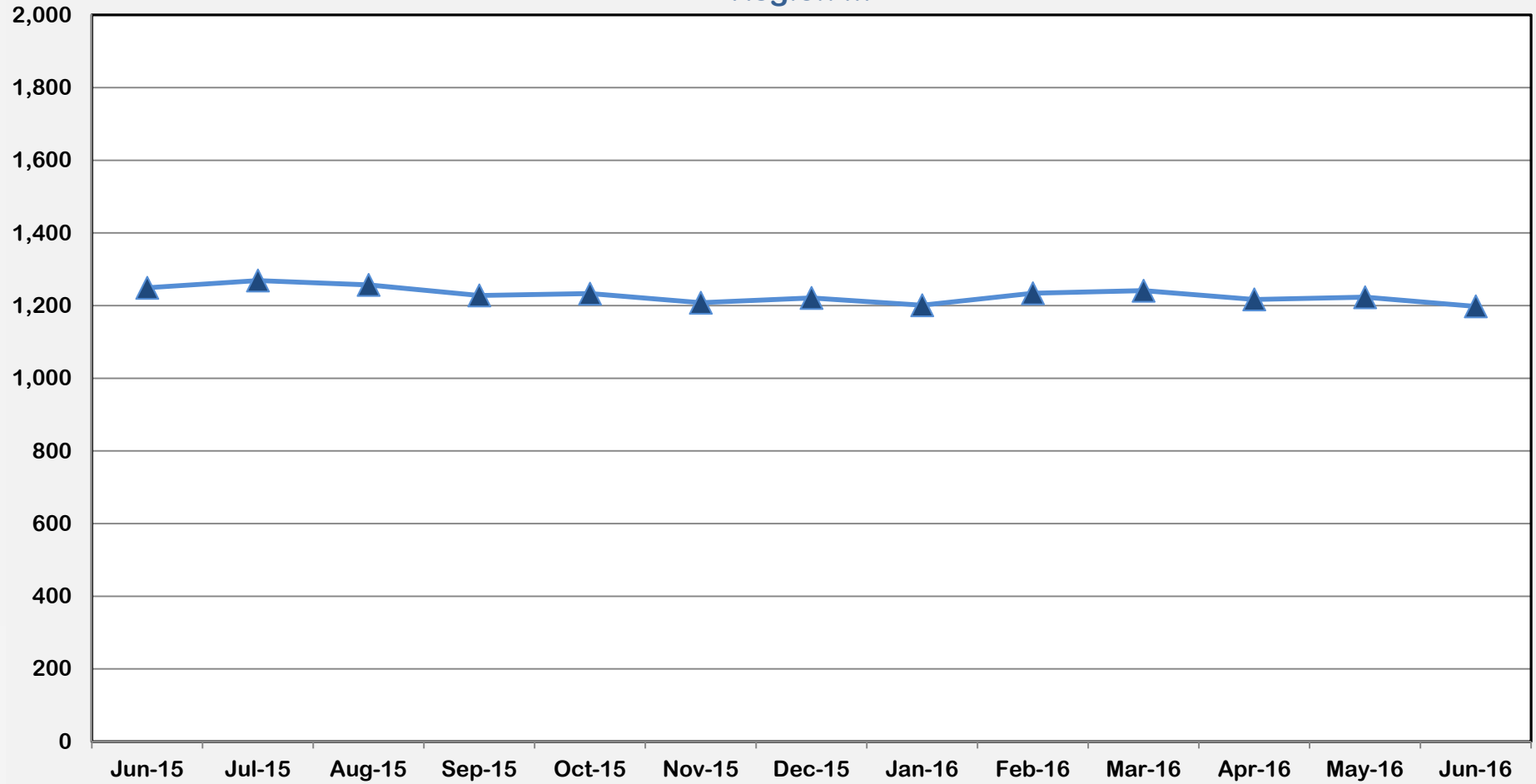


Jun-15	Jul-15	Aug-15	Sep-15	Oct-15	Nov-15	Dec-15	Jan-16	Feb-16	Mar-16	Apr-16	May-16	Jun-16
560	569	561	554	563	578	602	580	588	598	623	629	637



Outcome VI: Children in DFCS Custody Under the Age of 18
(June 2015 – June 2016)

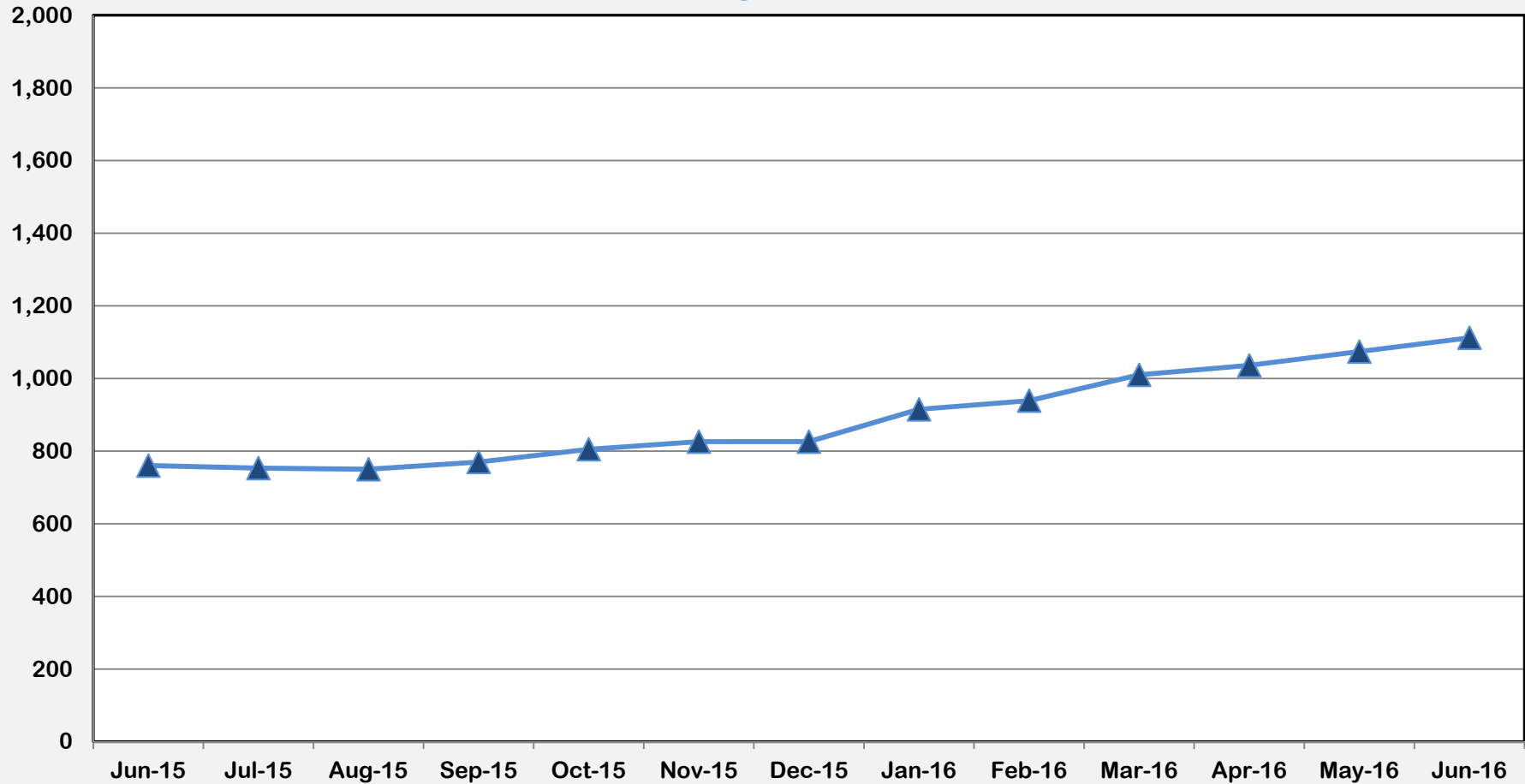
Region III



Jun-15	Jul-15	Aug-15	Sep-15	Oct-15	Nov-15	Dec-15	Jan-16	Feb-16	Mar-16	Apr-16	May-16	Jun-16
1,249	1,269	1,257	1,228	1,233	1,208	1,221	1,201	1,234	1,241	1,217	1,223	1,198



Outcome VI: Children in DFCS Custody Under the Age of 18
 (June 2015 – June 2016)
 Region IV

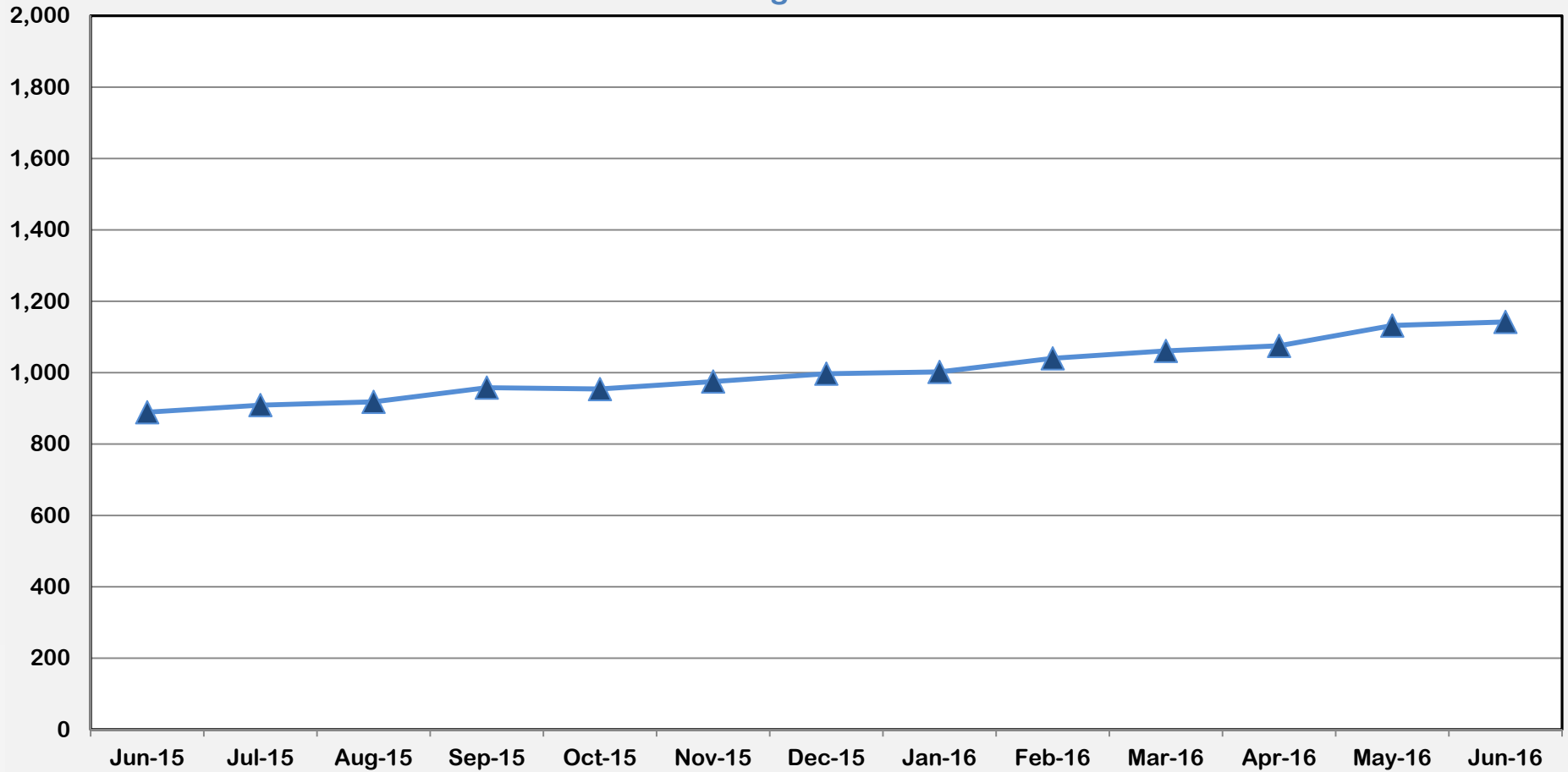


Jun-15	Jul-15	Aug-15	Sep-15	Oct-15	Nov-15	Dec-15	Jan-16	Feb-16	Mar-16	Apr-16	May-16	Jun-16
760	753	750	770	805	826	826	915	939	1,010	1,036	1,074	1,112



Outcome VI: Children in DFCS Custody Under the Age of 18
(June 2015 – June 2016)

Region V

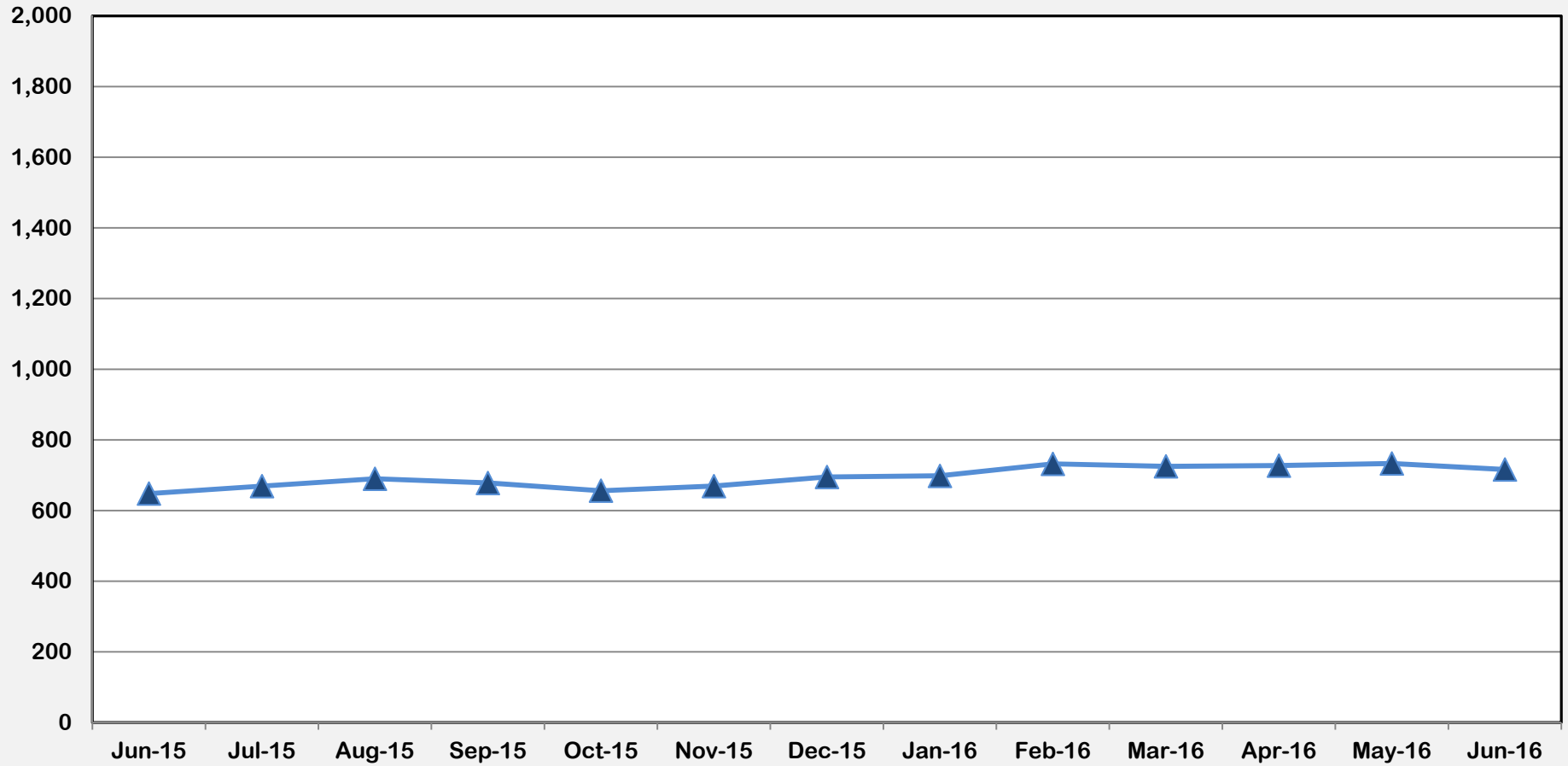


Jun-15	Jul-15	Aug-15	Sep-15	Oct-15	Nov-15	Dec-15	Jan-16	Feb-16	Mar-16	Apr-16	May-16	Jun-16
889	909	918	958	954	975	997	1,002	1,040	1,061	1,075	1,132	1,142



Outcome VI: Children in DFCS Custody Under the Age of 18
(June 2015 – June 2016)

Region VI

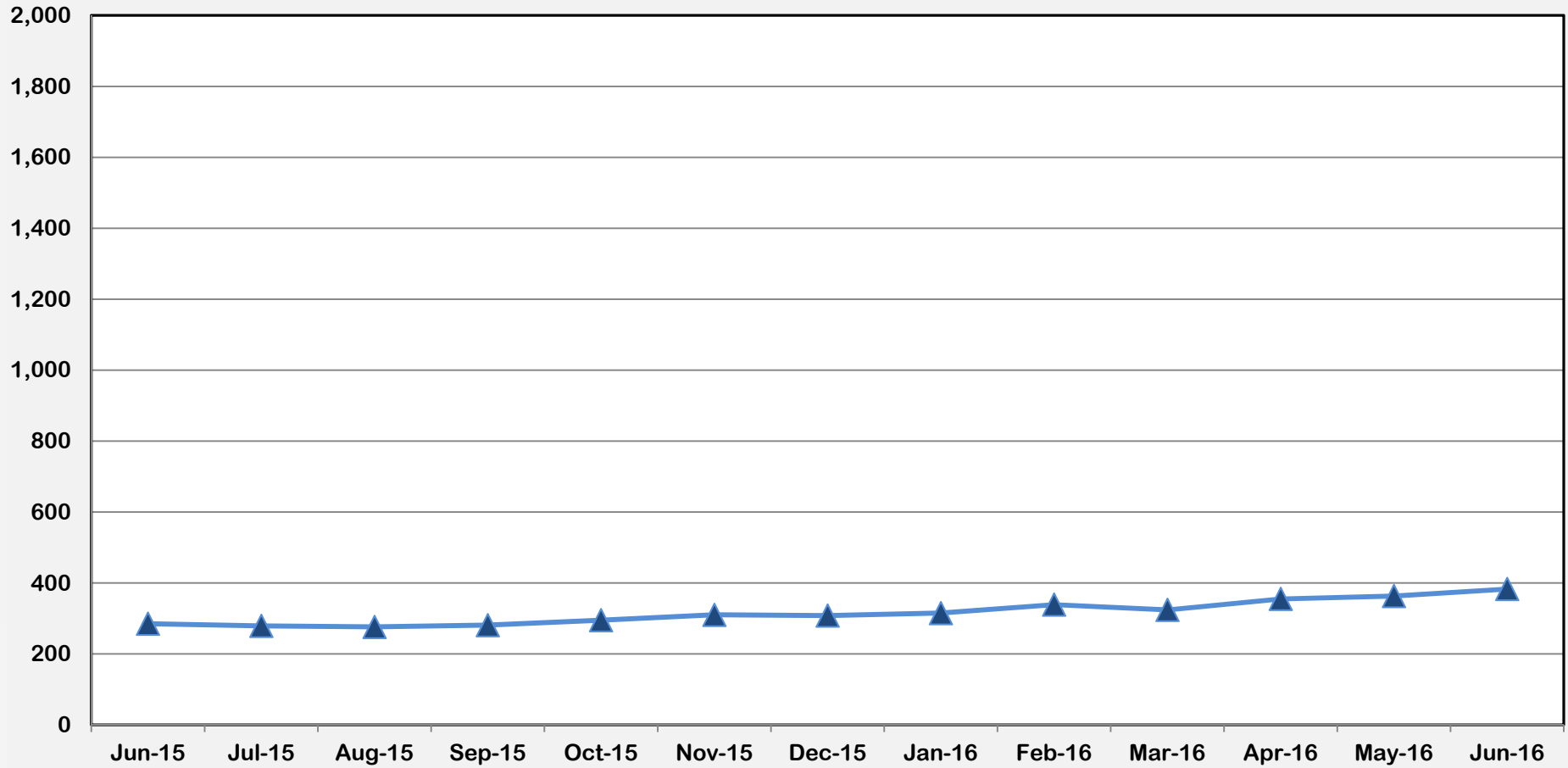


Jun-15	Jul-15	Aug-15	Sep-15	Oct-15	Nov-15	Dec-15	Jan-16	Feb-16	Mar-16	Apr-16	May-16	Jun-16
648	669	690	678	656	669	695	698	732	725	727	733	716



Outcome VI: Children in DFCS Custody Under the Age of 18
(June 2015 – June 2016)

Region VII

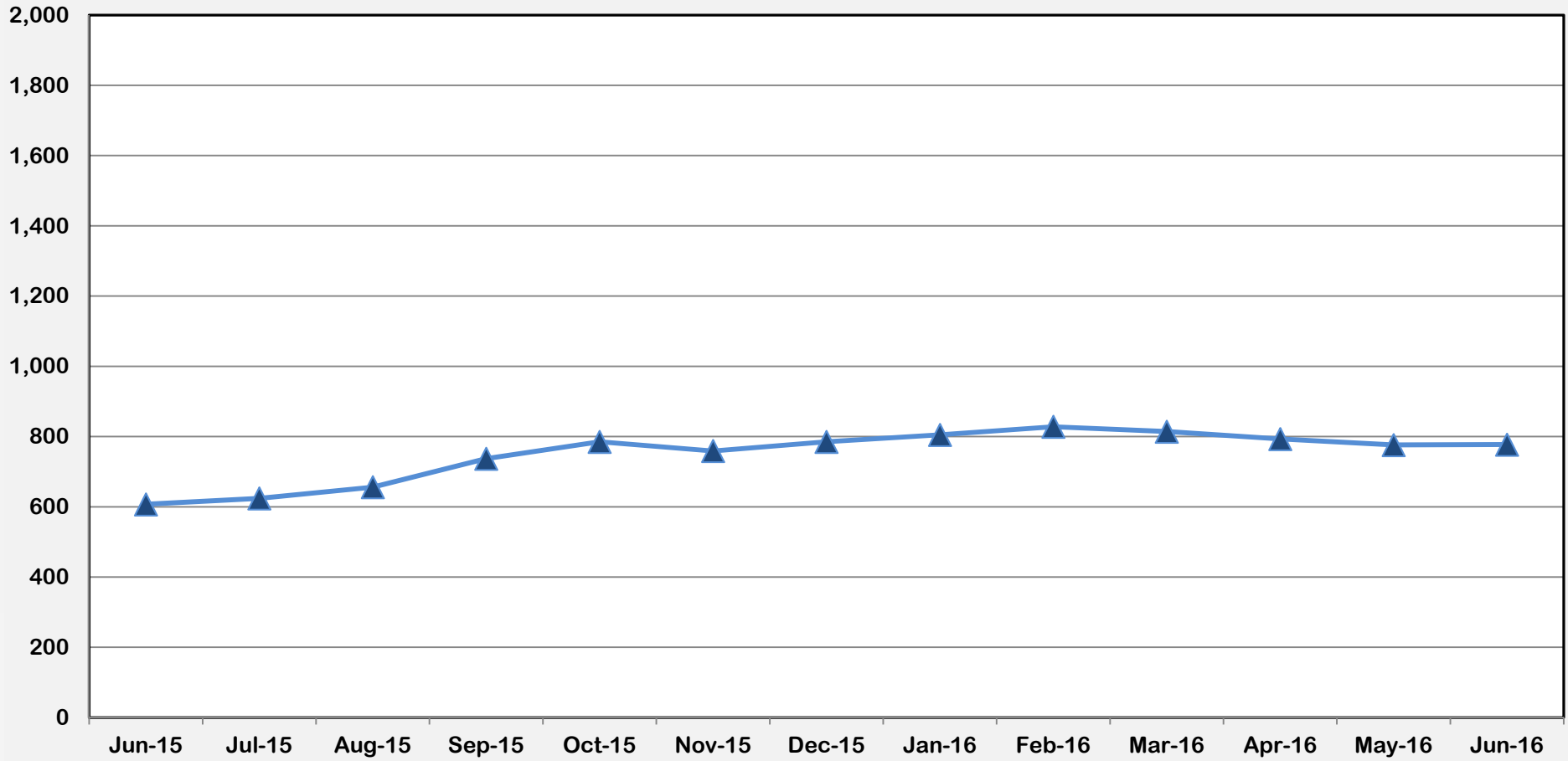


Jun-15	Jul-15	Aug-15	Sep-15	Oct-15	Nov-15	Dec-15	Jan-16	Feb-16	Mar-16	Apr-16	May-16	Jun-16
285	279	276	281	295	310	308	315	339	324	355	363	383



Outcome VI: Children in DFCS Custody Under the Age of 18
(June 2015 – 2016)

Region VIII

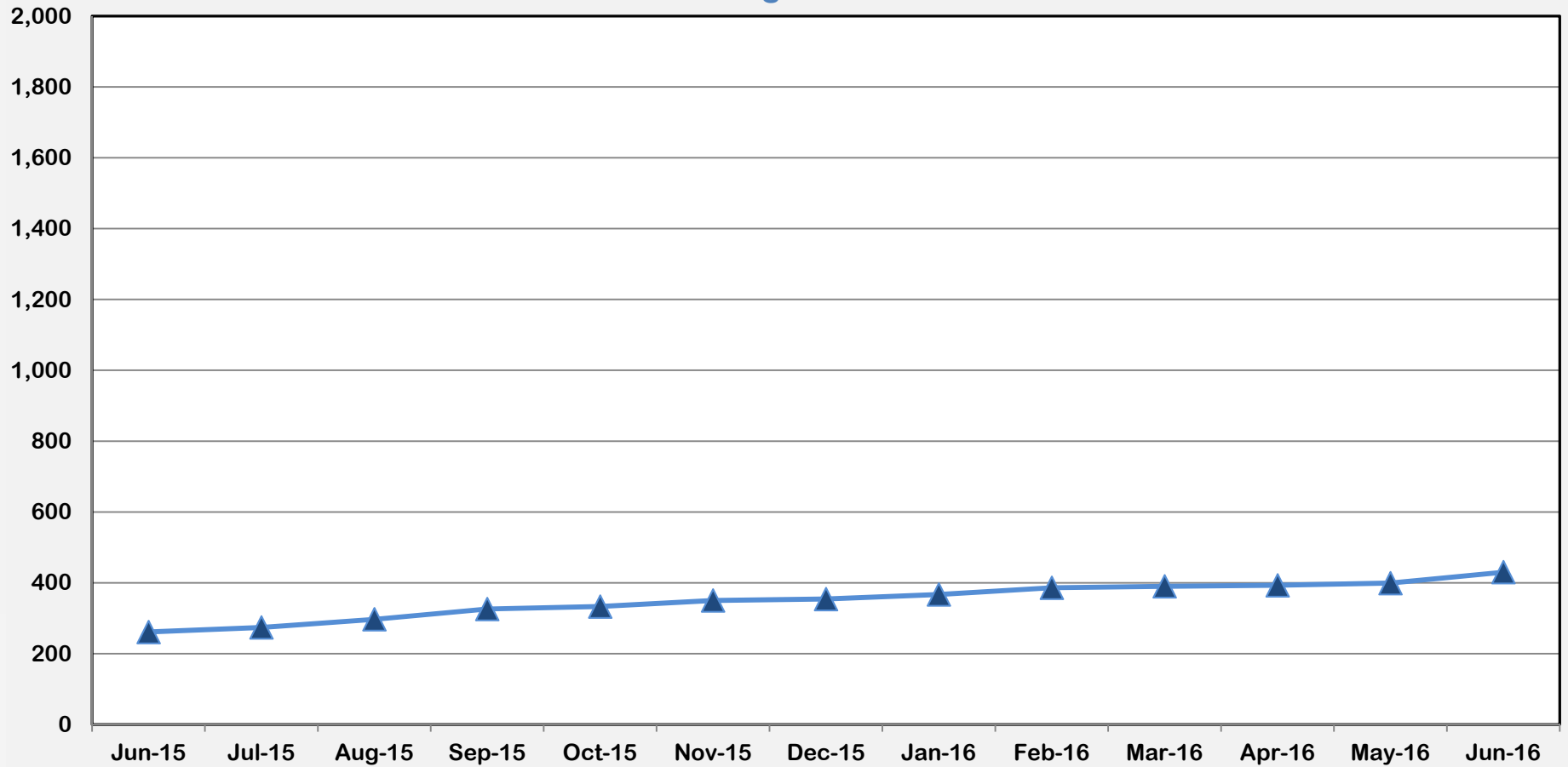


Jun-15	Jul-15	Aug-15	Sep-15	Oct-15	Nov-15	Dec-15	Jan-16	Feb-16	Mar-16	Apr-16	May-16	Jun-16
607	624	656	737	785	759	785	805	828	814	793	776	777



Outcome VI: Children in DFCS Custody Under the Age of 18
(June 2015 – June 2016)

Region IX

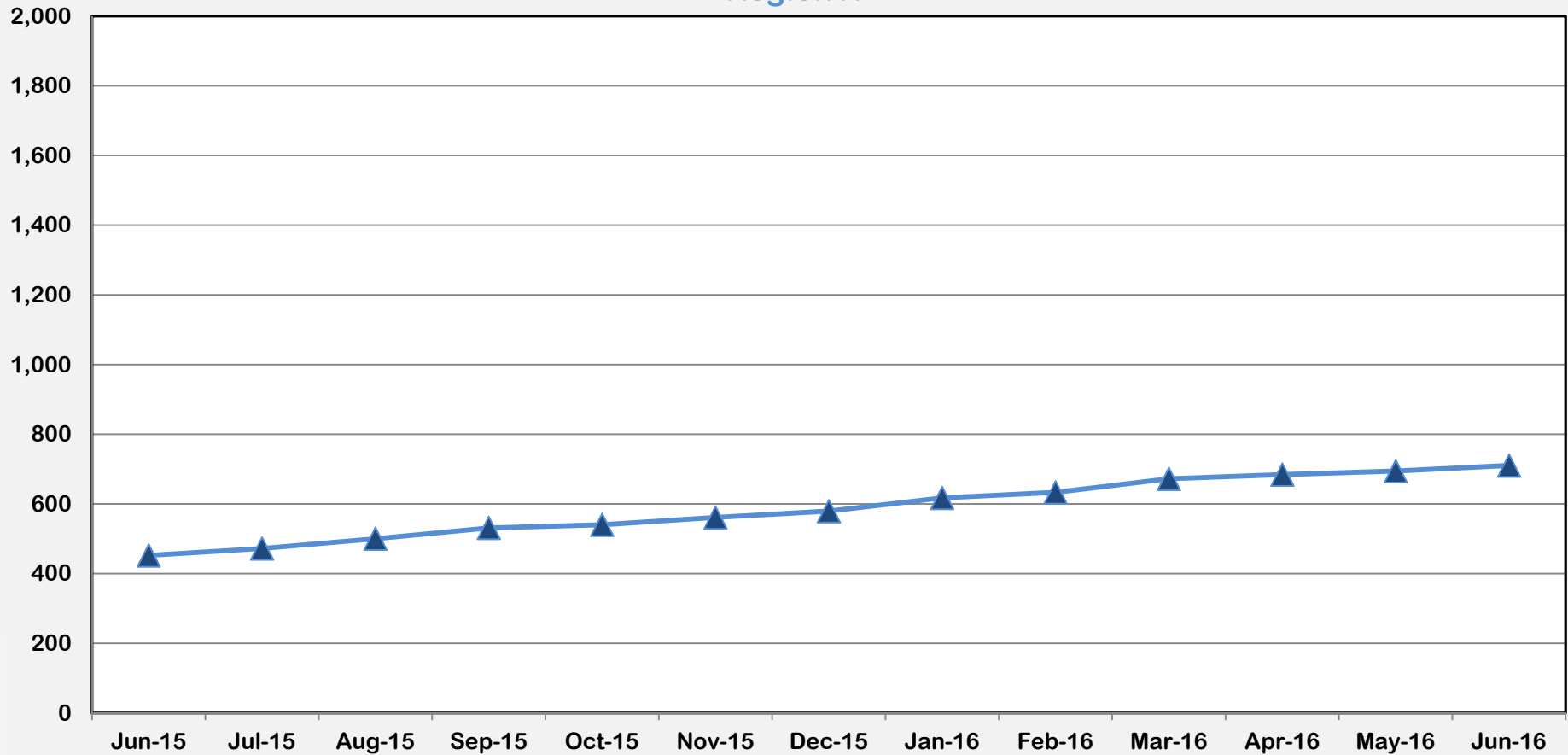


Jun-15	Jul-15	Aug-15	Sep-15	Oct-15	Nov-15	Dec-15	Jan-16	Feb-16	Mar-16	Apr-16	May-16	Jun-16
261	274	297	326	333	350	354	367	386	390	393	399	430



Outcome VI: Children in DFCS Custody Under the Age of 18
(June 2015 – June 2016)

Region X

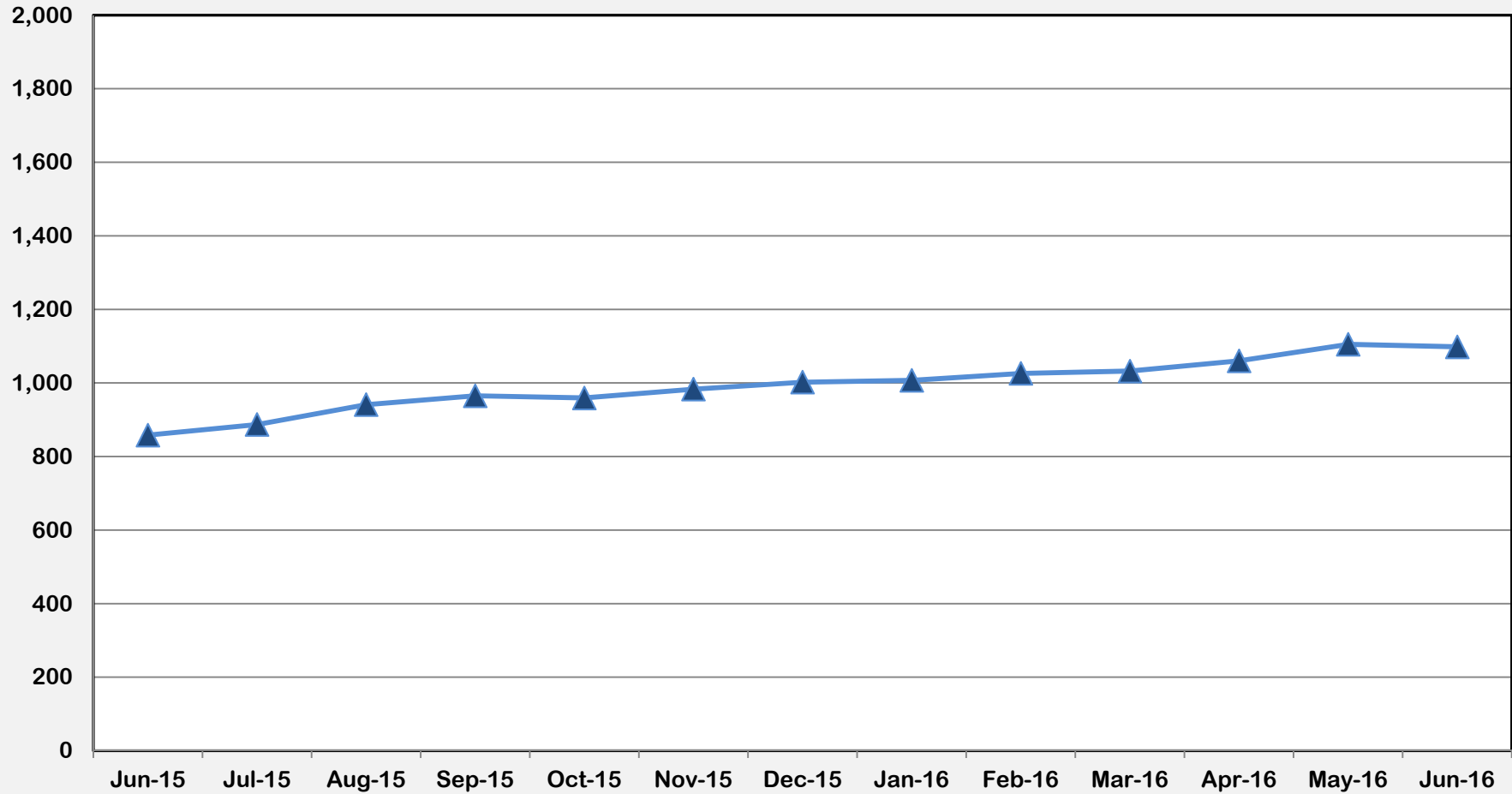


Jun-15	Jul-15	Aug-15	Sep-15	Oct-15	Nov-15	Dec-15	Jan-16	Feb-16	Mar-16	Apr-16	May-16	Jun-16
452	472	500	531	540	561	579	617	633	672	684	694	710



Outcome VI: Children in DFCS Custody Under the Age of 18
(June 2015 – June 2016)

Region XI

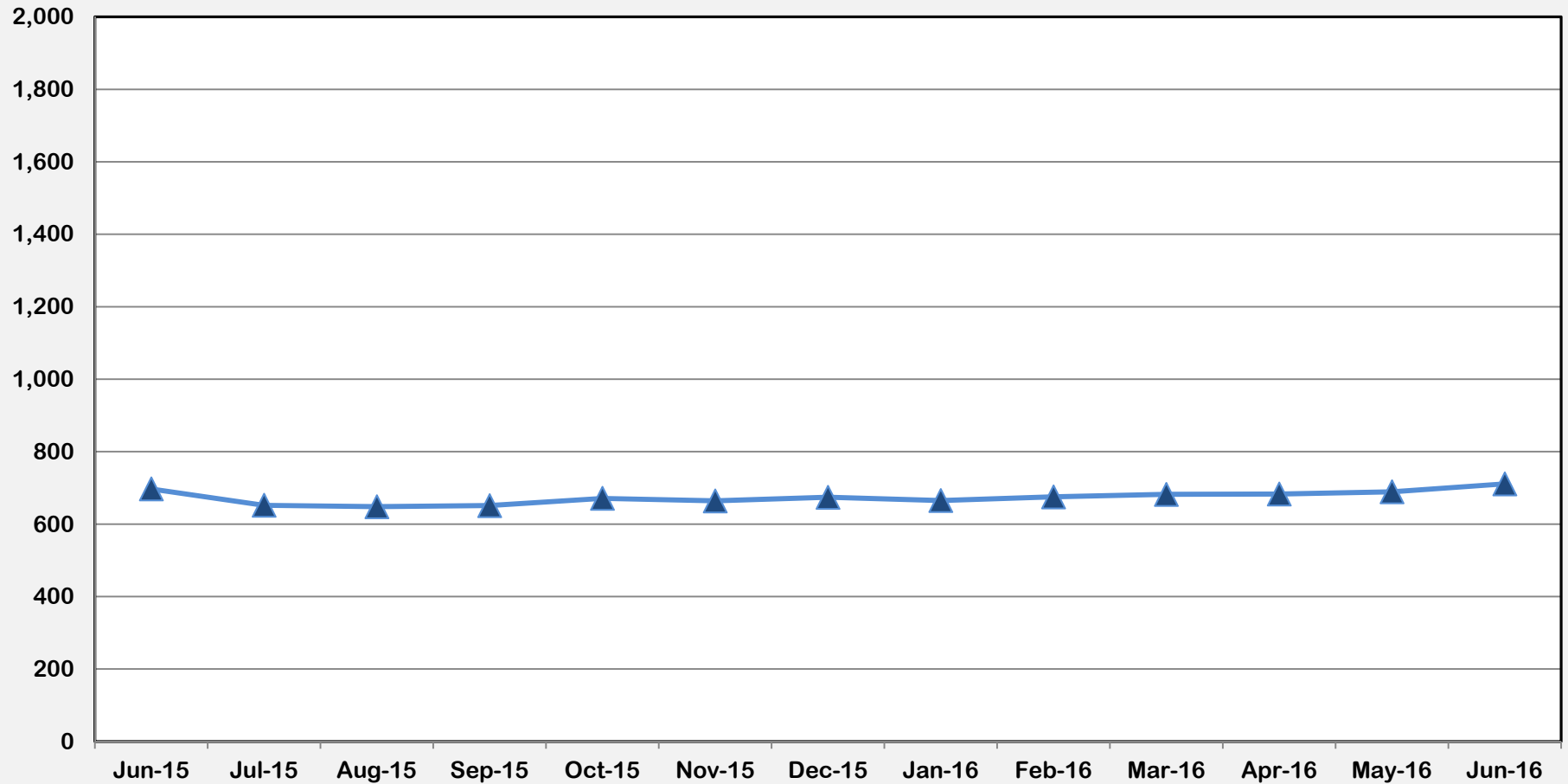


Jun-15	Jul-15	Aug-15	Sep-15	Oct-15	Nov-15	Dec-15	Jan-16	Feb-16	Mar-16	Apr-16	May-16	Jun-16
858	887	941	965	959	983	1,002	1,007	1,026	1,032	1,060	1,105	1,098



Outcome VI: Children in DFCS Custody Under the Age of 18
(June 2015 – June 2016)

Region XII

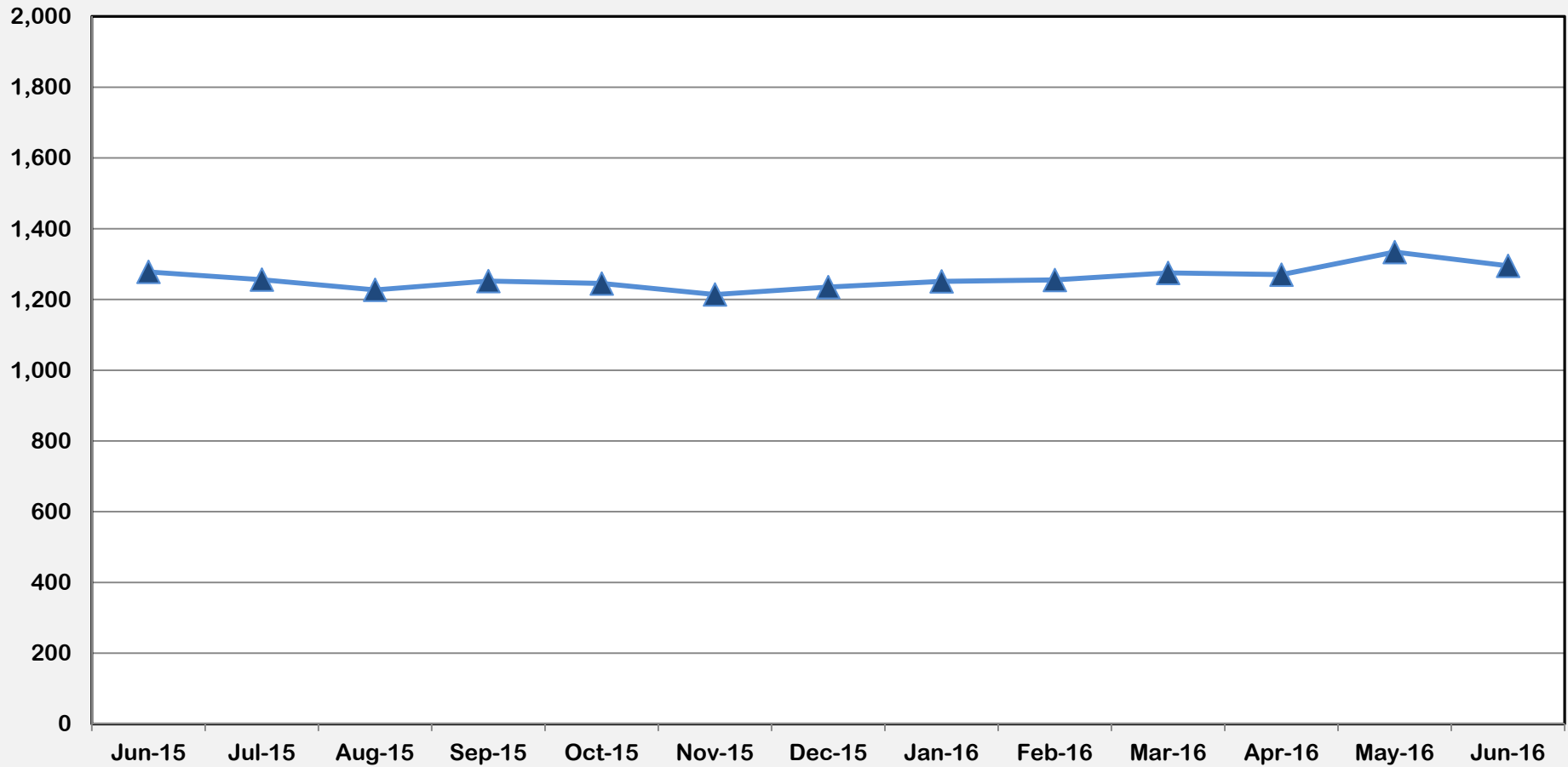


Jun-15	Jul-15	Aug-15	Sep-15	Oct-15	Nov-15	Dec-15	Jan-16	Feb-16	Mar-16	Apr-16	May-16	Jun-16
697	652	648	651	671	664	674	665	675	682	683	689	711



Outcome VI: Children in DFCS Custody Under the Age of 18
(June 2015 – June 2016)

Region XIII

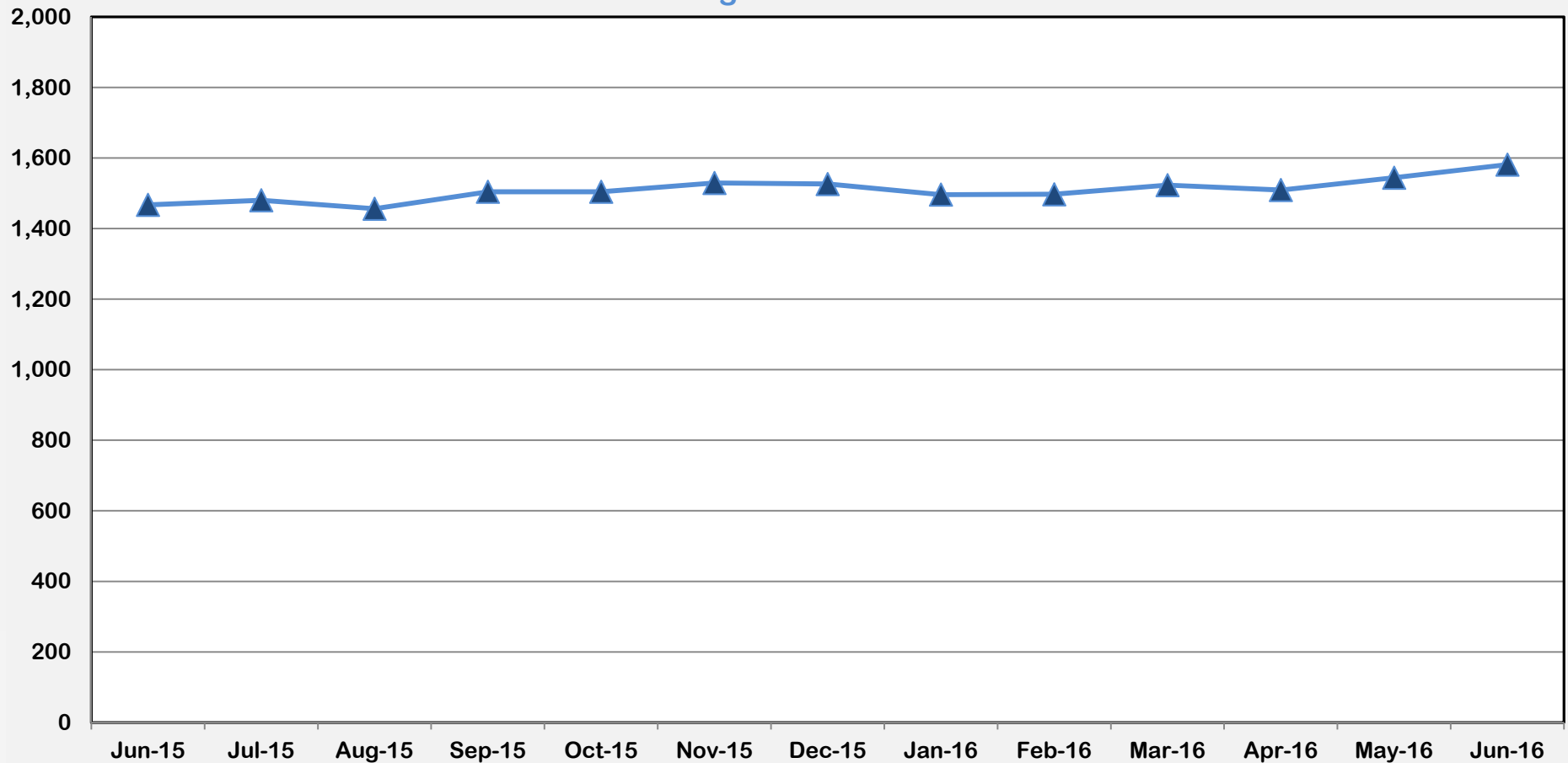


Jun-15	Jul-15	Aug-15	Sep-15	Oct-15	Nov-15	Dec-15	Jan-16	Feb-16	Mar-16	Apr-16	May-16	Jun-16
1,278	1,256	1,227	1,252	1,245	1,214	1,235	1,251	1,255	1,275	1,270	1,334	1,295



Outcome VI: Children in DFCS Custody Under the Age of 18
(June 2015 – June 2016)

Region XIV



Jun-15	Jul-15	Aug-15	Sep-15	Oct-15	Nov-15	Dec-15	Jan-16	Feb-16	Mar-16	Apr-16	May-16	Jun-16
1,467	1,480	1,456	1,504	1,504	1,529	1,526	1,496	1,497	1,523	1,509	1,544	1,581



APPENDIX C

Regional Graphs of Outcome XIII

Placement Stability Performance Coefficient (June 2015 – June 2016)

National Standard = 4.12

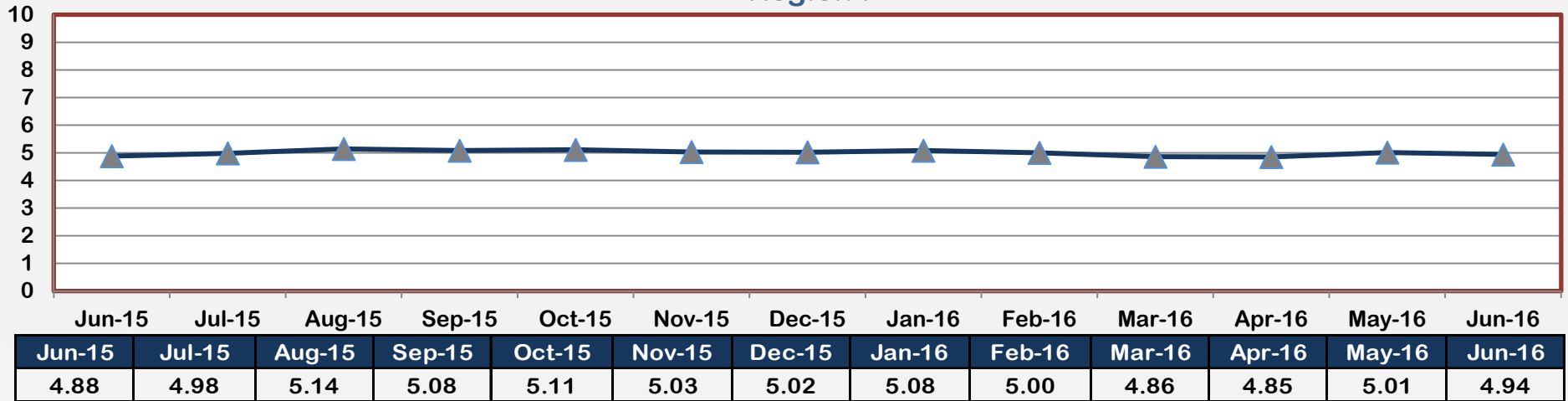
Desired Goal to Meet the PIP = 6.01



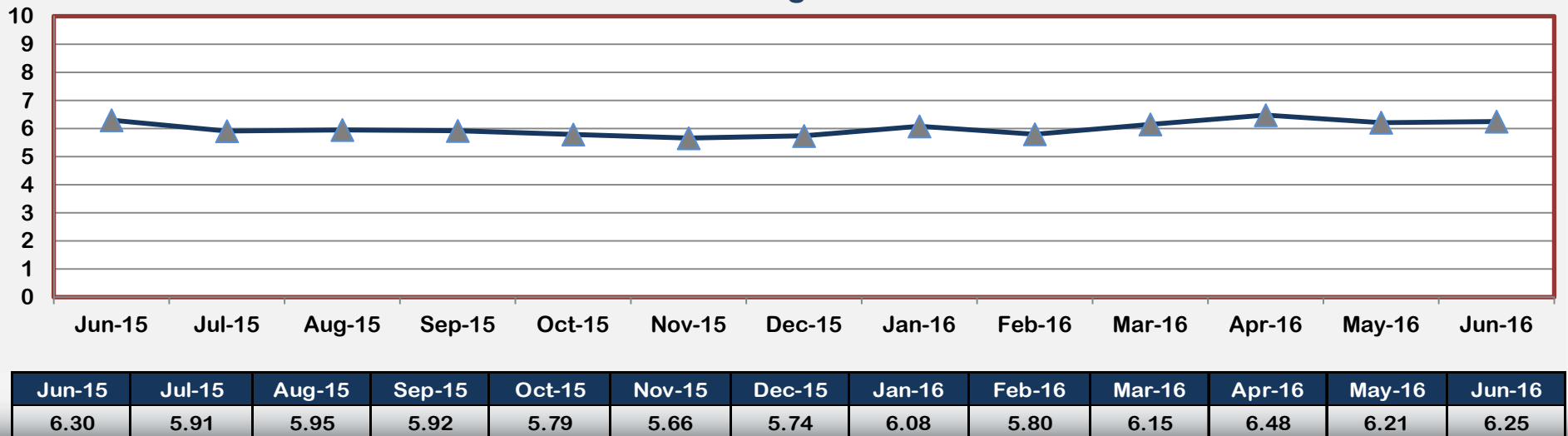
Division of Family & Children Services

Outcome XIII: Placement Stability Performance Coefficient (June 2015 – June 2016)

Region I

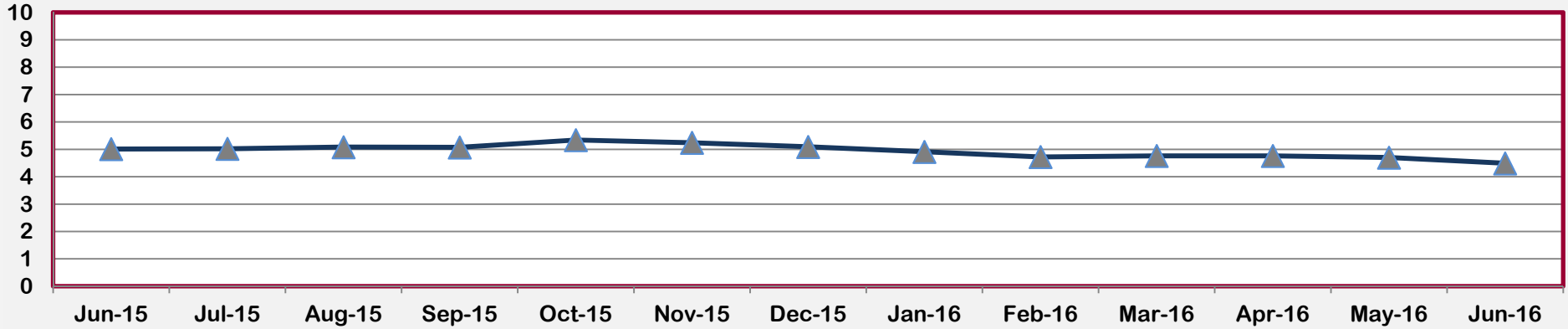


Region II



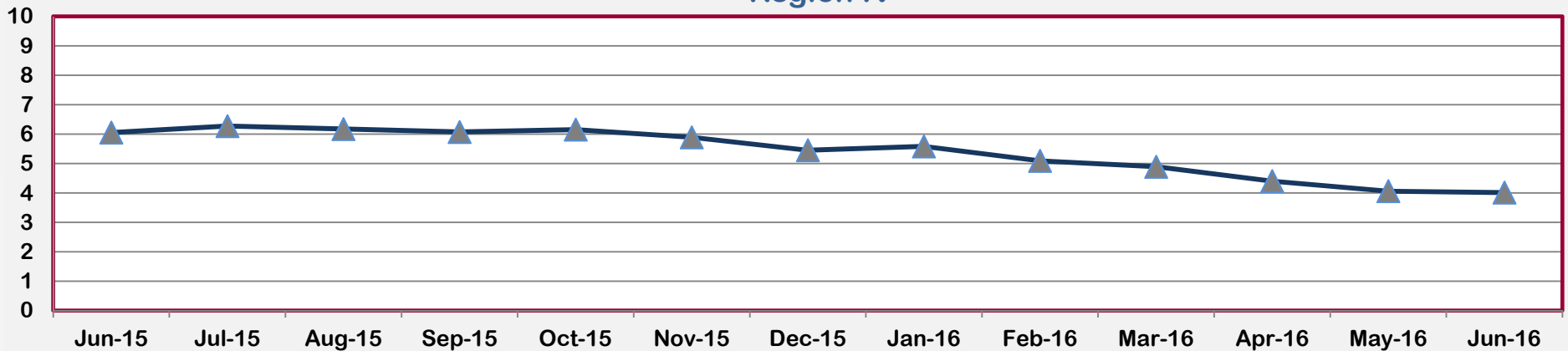
Outcome XIII: Placement Stability Performance Coefficient
(June 2015 - June 2016)

Region III



Jun-15	Jul-15	Aug-15	Sep-15	Oct-15	Nov-15	Dec-15	Jan-16	Feb-16	Mar-16	Apr-16	May-16	Jun-16
5.01	5.02	5.08	5.07	5.34	5.24	5.09	4.91	4.72	4.76	4.76	4.70	4.49

Region IV

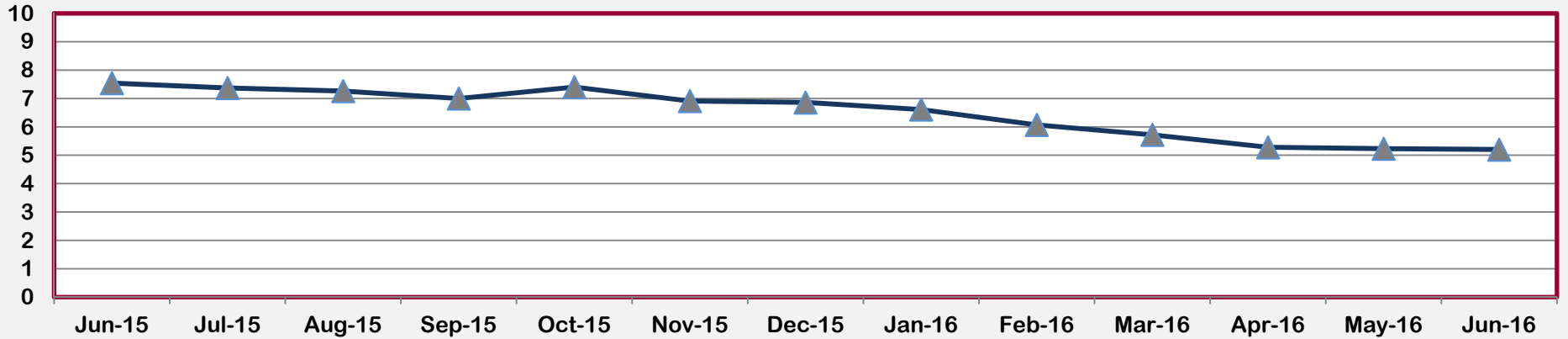


Jun-15	Jul-15	Aug-15	Sep-15	Oct-15	Nov-15	Dec-15	Jan-16	Feb-16	Mar-16	Apr-16	May-16	Jun-16
6.05	6.27	6.17	6.07	6.15	5.89	5.45	5.58	5.09	4.89	4.40	4.06	4.01



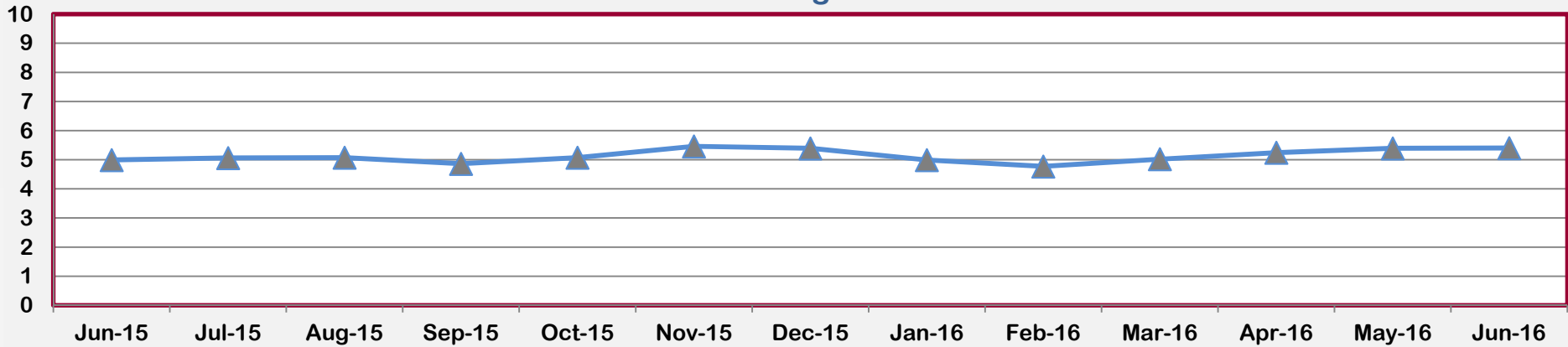
Outcome XIII: Placement Stability Performance Coefficient
(June 2015 - June 2016)

Region V



Jun-15	Jul-15	Aug-15	Sep-15	Oct-15	Nov-15	Dec-15	Jan-16	Feb-16	Mar-16	Apr-16	May-16	Jun-16
7.54	7.37	7.26	7.00	7.40	6.91	6.86	6.61	6.07	5.72	5.28	5.23	5.20

Region VI

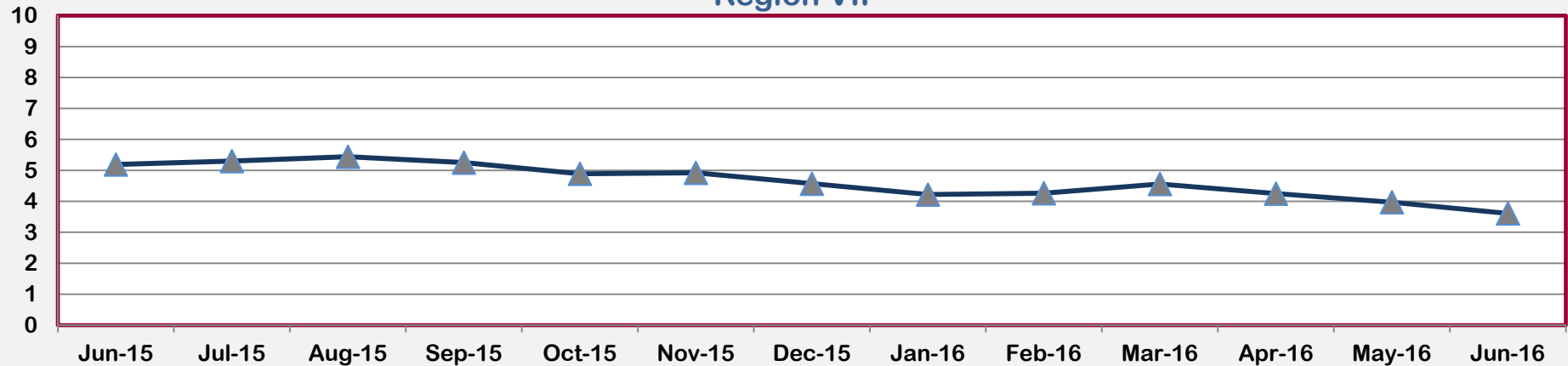


Jun-15	Jul-15	Aug-15	Sep-15	Oct-15	Nov-15	Dec-15	Jan-16	Feb-16	Mar-16	Apr-16	May-16	Jun-16
4.99	5.06	5.07	4.86	5.07	5.46	5.39	4.99	4.77	5.02	5.24	5.39	5.40



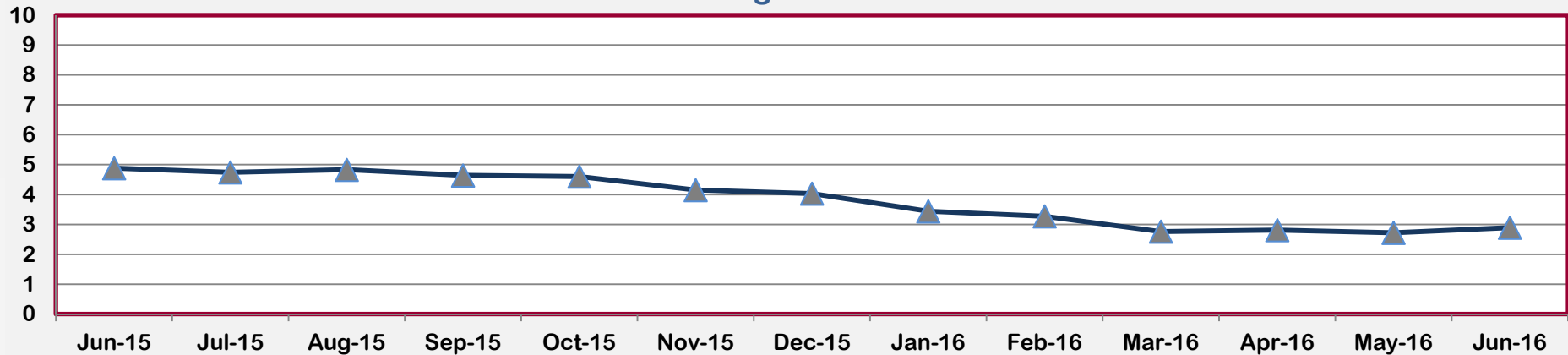
Outcome XIII: Placement Stability Performance Coefficient
(June 2015 - June 2016)

Region VII



Jun-15	Jul-15	Aug-15	Sep-15	Oct-15	Nov-15	Dec-15	Jan-16	Feb-16	Mar-16	Apr-16	May-16	Jun-16
5.19	5.30	5.44	5.25	4.89	4.92	4.57	4.22	4.26	4.56	4.25	3.97	3.61

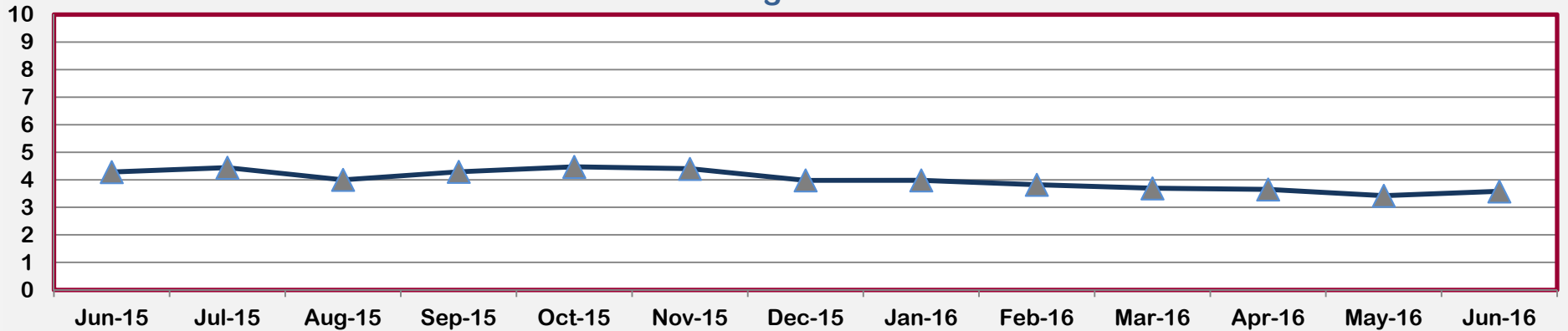
Region VIII



Jun-15	Jul-15	Aug-15	Sep-15	Oct-15	Nov-15	Dec-15	Jan-16	Feb-16	Mar-16	Apr-16	May-16	Jun-16
4.88	4.74	4.83	4.64	4.60	4.15	4.03	3.44	3.27	2.76	2.81	2.72	2.89

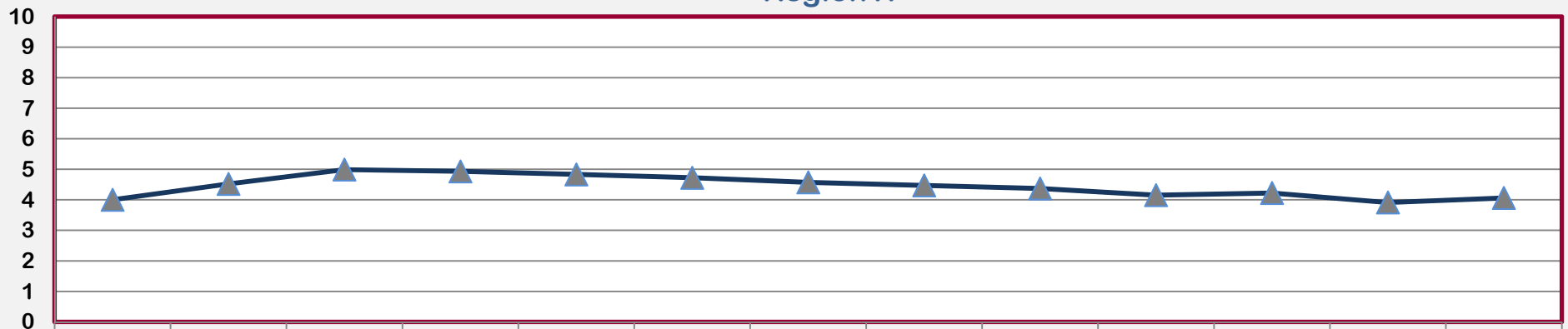


Outcome XIII: Placement Stability Performance Coefficient
 (June 2015 - June 2016)
 Region IX



Jun-15	Jul-15	Aug-15	Sep-15	Oct-15	Nov-15	Dec-15	Jan-16	Feb-16	Mar-16	Apr-16	May-16	Jun-16
4.28	4.44	4.00	4.29	4.47	4.40	3.98	3.98	3.82	3.69	3.65	3.42	3.58

Region X

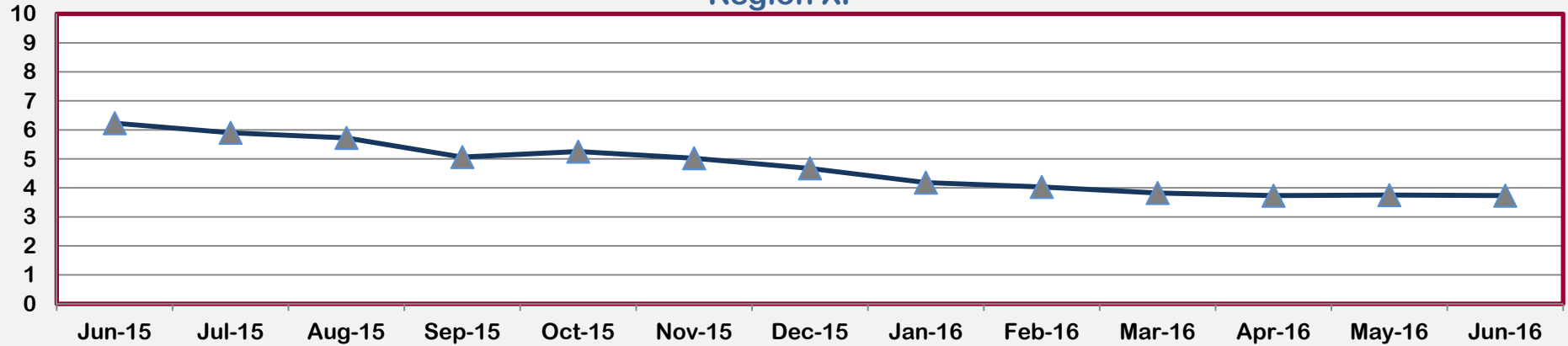


Jun-15	Jul-15	Aug-15	Sep-15	Oct-15	Nov-15	Dec-15	Jan-16	Feb-16	Mar-16	Apr-16	May-16	Jun-16
4.00	4.52	4.99	4.93	4.83	4.72	4.57	4.47	4.37	4.15	4.22	3.91	4.06



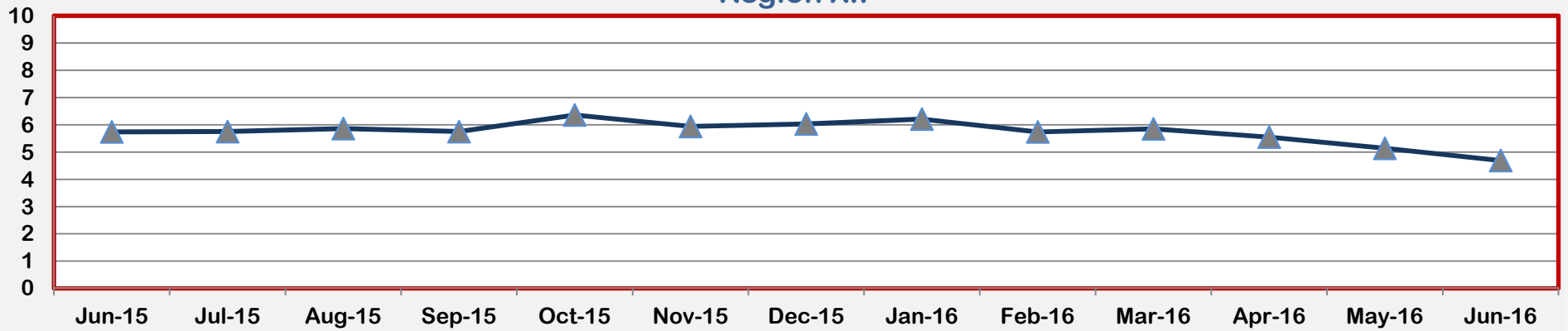
Outcome XIII: Placement Stability Performance Coefficient
(June 2015 - June 2016)

Region XI



Jun-15	Jul-15	Aug-15	Sep-15	Oct-15	Nov-15	Dec-15	Jan-16	Feb-16	Mar-16	Apr-16	May-16	Jun-16
6.23	5.90	5.72	5.06	5.25	5.02	4.67	4.18	4.03	3.82	3.73	3.75	3.73

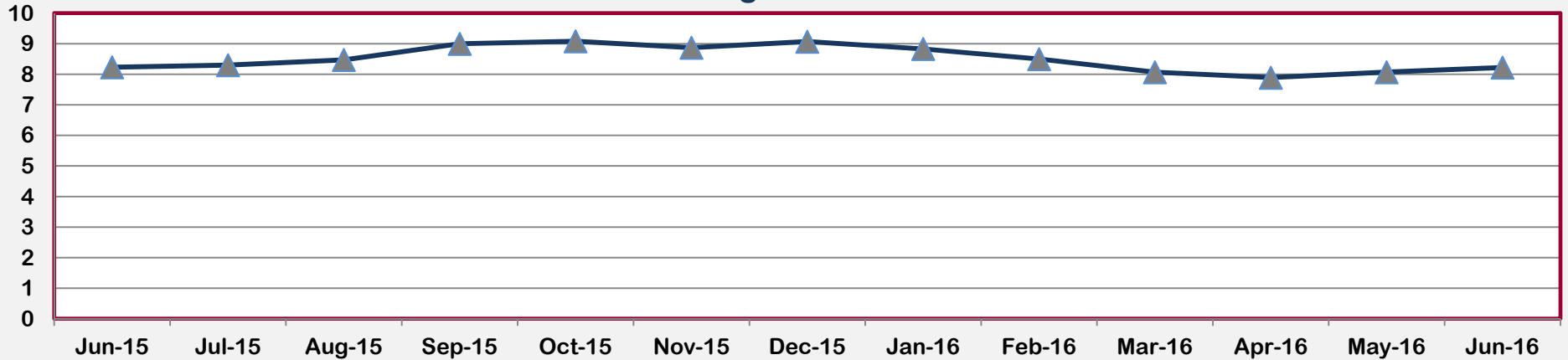
Region XII



Jun-15	Jul-15	Aug-15	Sep-15	Oct-15	Nov-15	Dec-15	Jan-16	Feb-16	Mar-16	Apr-16	May-16	Jun-16
5.74	5.75	5.86	5.75	6.36	5.94	6.03	6.21	5.74	5.85	5.55	5.14	4.69

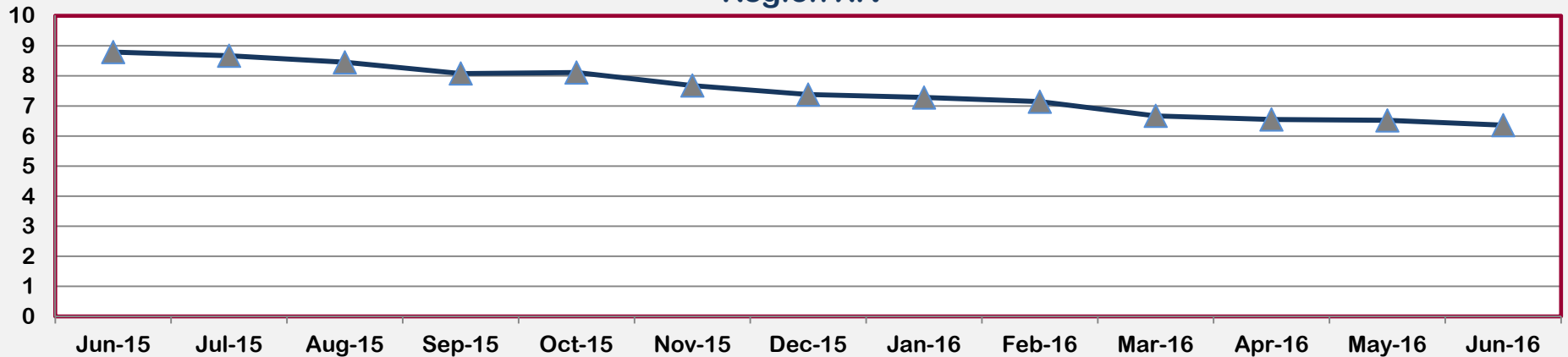


Outcome XIII: Placement Stability Performance Coefficient
 (June 2015 - June 2016)
 Region XIII



Jun-15	Jul-15	Aug-15	Sep-15	Oct-15	Nov-15	Dec-15	Jan-16	Feb-16	Mar-16	Apr-16	May-16	Jun-16
8.23	8.30	8.47	9.00	9.08	8.87	9.07	8.83	8.50	8.07	7.89	8.07	8.22

Region XIV



Jun-15	Jul-15	Aug-15	Sep-15	Oct-15	Nov-15	Dec-15	Jan-16	Feb-16	Mar-16	Apr-16	May-16	Jun-16
8.79	8.67	8.45	8.08	8.11	7.68	7.38	7.28	7.14	6.67	6.55	6.52	6.36

