



Georgia Division of Family and Children Services

Director

Bobby D. Cagle

Monthly Measures and Results for June 2015*

*(Reflects Safety Outcomes as of April 30, 2015 And
Permanency Outcomes as of May 31, 2015)

With Appendices



Division of Family and Children Services

Table of Contents

- Part I: Definitions And Data Sources contained in Report**
- Part II: Safety Outcomes**
- Part III: Permanency/Well-being Outcomes**
- Part IV: Appendices**
 - A. Disposition of Investigations by Percentage**
 - B. Regional Charts of Outcome V (Children in the Legal Custody of DFCS Under the Age of 18)**



Definitions and Data Sources

SAFETY: Children are first and foremost, protected from abuse and neglect.

Outcome I: Child Protective Services Cases

Count of unique Family Support, CPS Investigations and Family Preservation (Ongoing) stages open at any point during the month. Includes all cases active at some time during the month. Outcome is calculated 45 days prior to the date of report.

Outcome 1A: Family Support Cases Only: Count of unique Family Support stages open at any point during the month.

Outcome 1B: Investigation Cases Only: Count of unique Investigation stages open at any point during the month.

Outcome 1C: Family Preservation Cases Only: Count of unique Family Preservation stages open at any point during the month.

Sources: SHINES

Outcome II: Recurrence of Substantiated Child Maltreatment

Of all the children who were victims of substantiated maltreatment in the first 6 months of the year, the percentage that had substantiated maltreatment within the following 6 months. Outcome is calculated 45 days prior to the date of report. Each month is calculated as a rolling calendar year. *National Standard: less than or equal to 5.40%*

Source: SHINES

Outcome III: Disposition of Child Abuse and Neglect Reports

Chart reflects the disposition of reports received in a particular month. Data includes count of Family Support, Substantiated Investigations, Unsubstantiated Investigations and Screen-outs. Outcome is calculated 45 days prior to the date of report.

Source: SHINES

Outcome IV: Subsequent Case-type of Investigations by Disposition

Chart reflects the disposition of investigations received in a particular month by the subsequent case type. Data includes count of Family Preservation (Substantiated and Unsubstantiated Open), Foster Care (Substantiated and Unsubstantiated Open), Substantiated and Unsubstantiated Closed. Outcome is calculated 45 days prior to the date of report.

Source: SHINES



Division of Family and Children Services

Definitions and Data Sources

PERMANENCY: Children have permanency and stability in their living situations.

Outcome V: Number of Child Placement Services Cases

Count of unique children who were involved in an open Foster Care or Adoption stage during the month. In placement services each child who is the principal (PC) is considered a case.

Source: SHINES

Outcome VI: Children in the Legal Custody of DFCS Under the Age of 18

Count of unique children who were in the legal custody of DFCS (17 years of age and under) at some point during the month, and those 18 years of age and older (Extended Youth Services). Excludes Aftercare, ICPC, Placement services to parents, and Boarding County.

Source: SHINES

Outcome VI - A: Children in the Legal Custody of DFCS Under the Age of 18 (Regional)

Count of unique children who were in the legal custody of DFCS (17 years of age and under) at some point during the month, and those 18 years of age and older (Extended Youth Services). Excludes Aftercare, ICPC, Placement services to parents, and Boarding County.

Source: SHINES

Outcome VII: Comparison of Foster Care Entries & Exits

Number of children who have entered foster care and number of children who have exited foster care during the month. Total children at end of month show the number of children on the last day of the month.

Source: SHINES

Outcome VIII: Foster Care Re-entries

Of all the children who entered foster care, the percentage that were discharged from a prior episode of foster care within 12 months of the current foster care placement. National Standard: less than or equal to 8.60%.

Source: SHINES

Outcome IX: Foster Care Length of Stay

Percentage of children by number of months in foster care during each month.

Source: SHINES



Definitions and Data Sources

PERMANENCY cont'd: Children have permanency and stability in their living situations.

Outcome X: Length of Time to Achieve Reunification

Percentage of children who exited care during the month through reunification with their family that reunified in less than 12 months from the date of their removal. National Standard: greater than or equal to 76.20%

Source: SHINES

Outcome XI: Children Placed with Relatives

Of all children in DFCS custody, the percentage that are placed with a relative or a relative foster home.

State Target: greater than or equal to 30.00%

Source: SHINES

Outcome XII: Extended Youth Services

Number of children ages 18 – 21 who remained in the custody of DFCS beyond their birth month.

Source: SHINES

Outcome XIII: Adoptions Finalized

The number of children whose adoption was finalized within each month..

Source: SHINES

Outcome XIV: Stability Performance Coefficient (Number of Moves/Number of Days in Custody * 1000)

A calculated value based upon the ACF CFPS Round 3 which is part of Program Improvement. It is calculated from a rolling 12 month population of the entry cohort where the child remained in custody for over 8 days and was not 18 on the date of removal. The ACF Target is: 4.26 to avoid PIP.

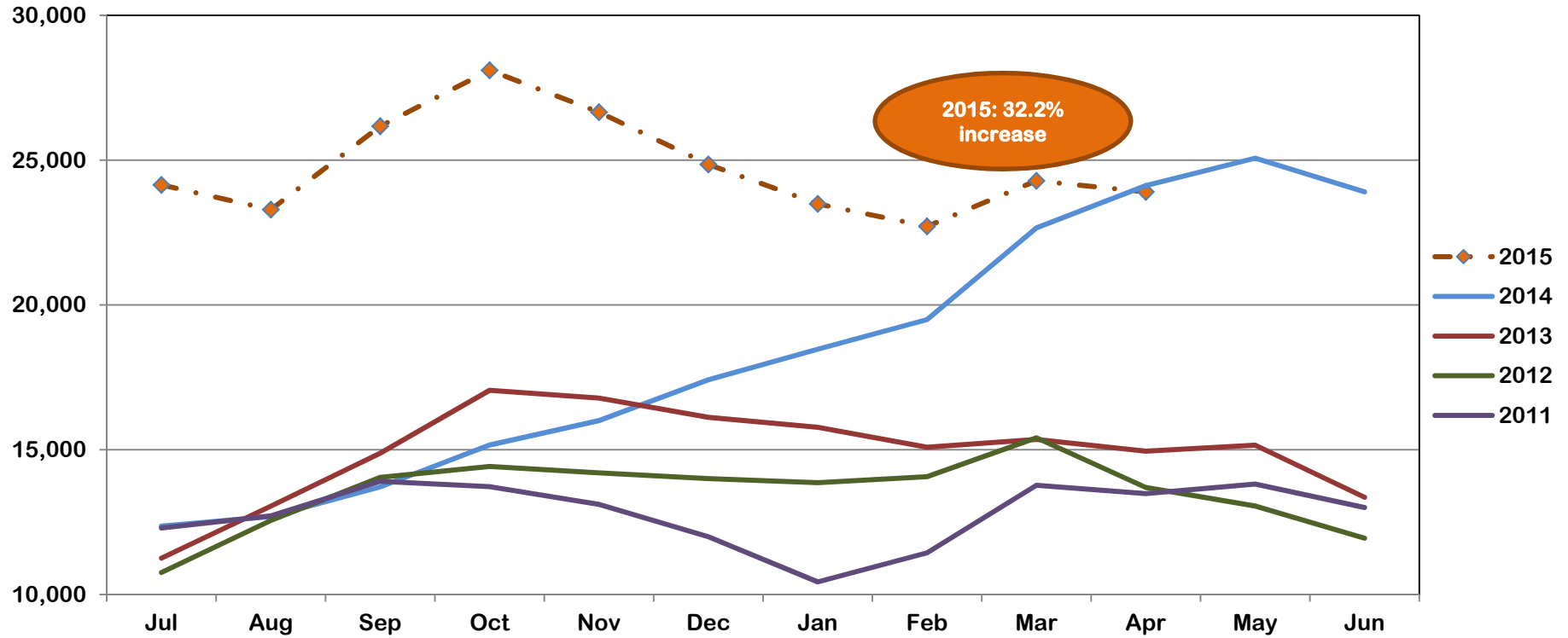
Source: SHINES



*may vary from month to month due to 13 month data trends being re-run over the time span for the various
his report.*

Division of Family and Children Services

Outcome I: Child Protective Services Cases (April 2015)

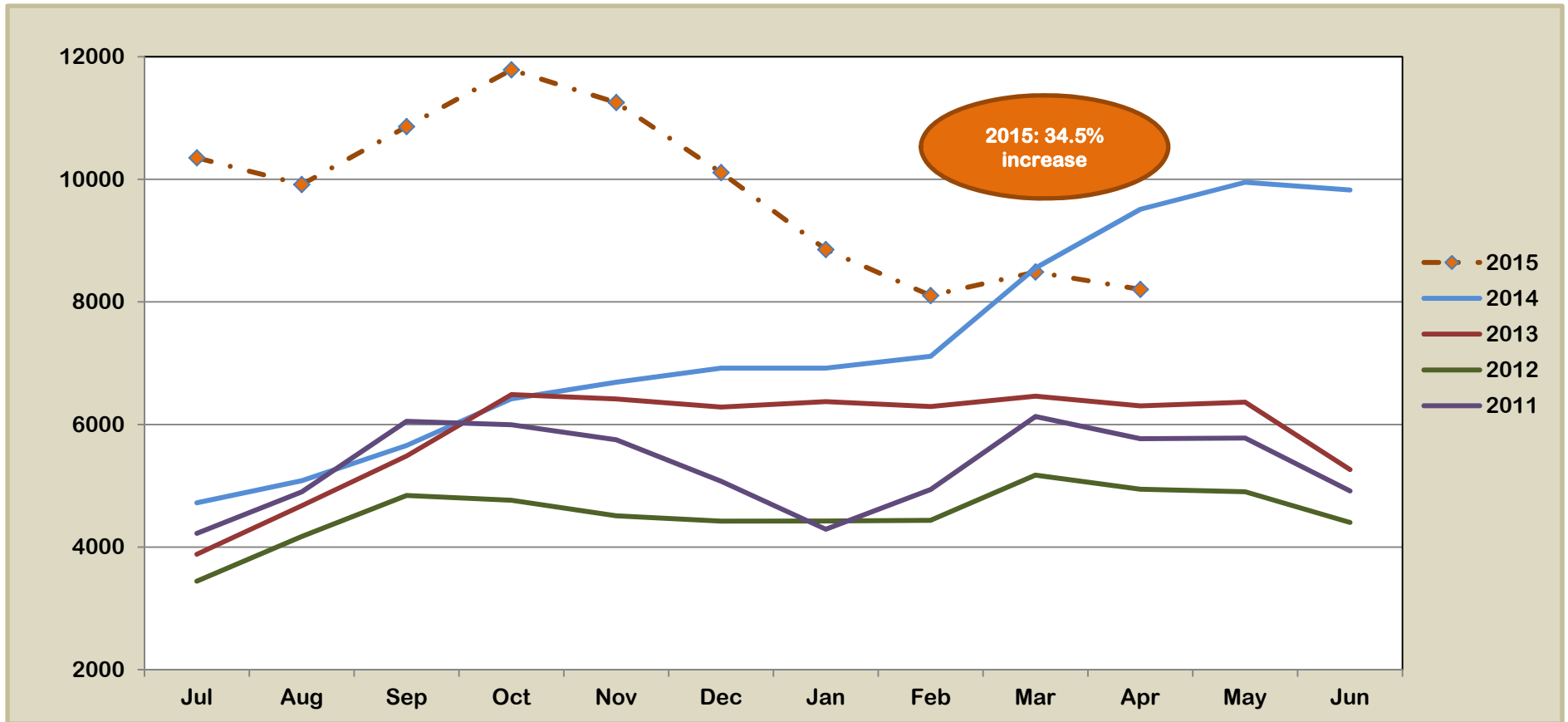


State FY	Jul	Aug	Sep	Oct	Nov	Dec	Jan	Feb	Mar	Apr	May	Jun	Average	% Increase
2015	24,147	23,291	26,170	28,102	26,659	24,850	23,488	22,712	24,287	23,905			22,693	32.2%
2014	12,363	12,693	13,715	15,162	16,008	17,416	18,470	19,491	22,662	24,120	25,071	23,905	17,161	23.4%
2013	11,256	13,050	14,878	17,050	16,783	16,119	15,773	15,088	15,355	14,951	15,157	13,355	13,910	10.2%
2012	10,761	12,556	14,045	14,422	14,202	14,002	13,860	14,070	15,411	13,697	13,055	11,944	12,618	5.4%
2011	12,296	12,715	13,907	13,723	13,111	11,993	10,435	11,437	13,771	13,482	13,812	13,002	11,977	-25.5%



Division of Family and Children Services

Outcome IA: Child Protective Services Cases Family Support Cases Only (April 2015)

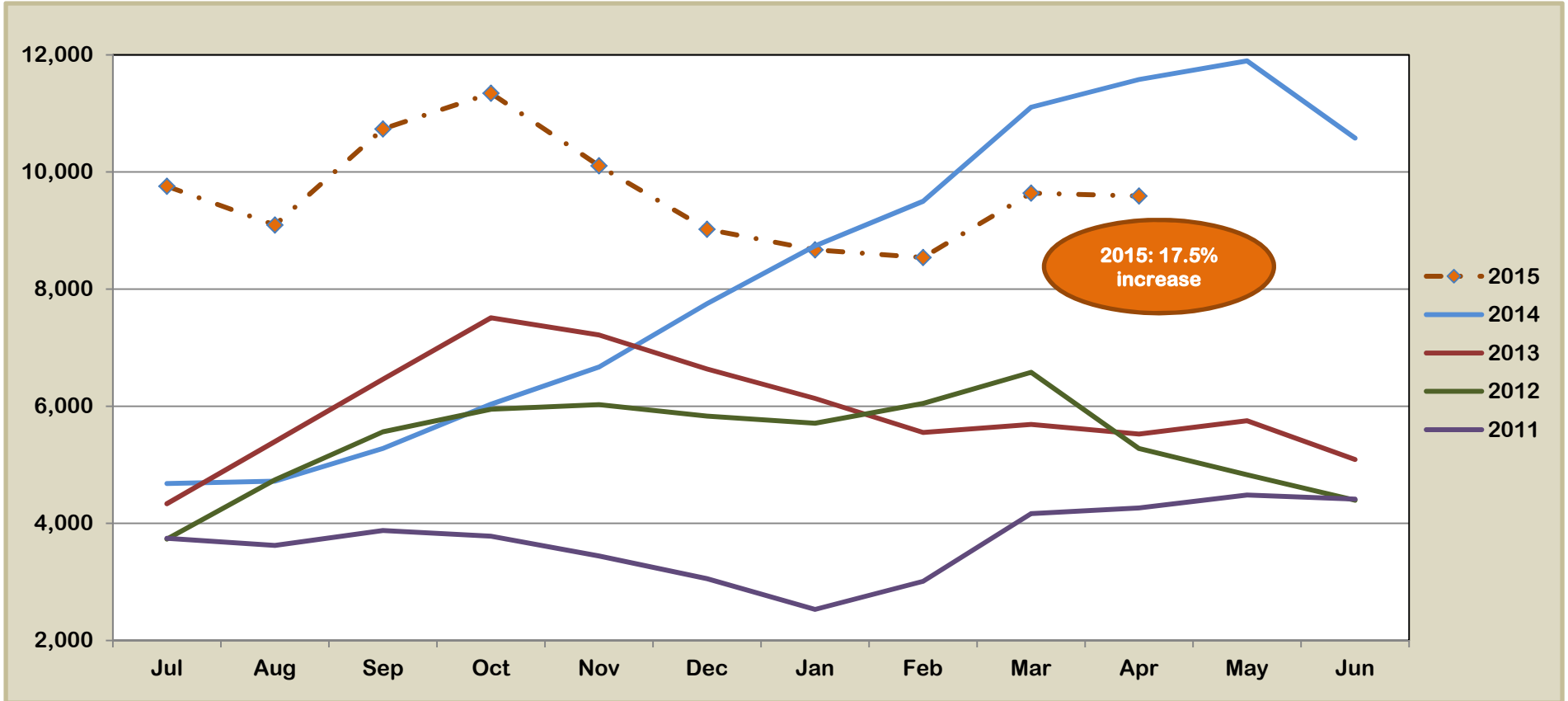


State FY	Jul	Aug	Sep	Oct	Nov	Dec	Jan	Feb	Mar	Apr	May	Jun	Average	% Increase
2015	10,350	9,915	10,861	11,786	11,254	10,111	8,854	8,103	8,488	8,203			9,793	34.5%
2014	4,723	5,083	5,658	6,418	6,690	6,919	6,919	7,113	8,552	9,511	9,951	9,826	7,280	24.3%
2013	3,883	4,674	5,487	6,488	6,417	6,284	6,374	6,292	6,463	6,304	6,364	5,265	5,858	29.1%
2012	3,443	4,173	4,842	4,764	4,510	4,423	4,425	4,437	5,174	4,945	4,903	4,402	4,537	-14.7%
2011	4,225	4,901	6,052	5,995	5,750	5,074	4,292	4,940	6,131	5,769	5,779	4,915	5,319	-13.3%



Division of Family and Children Services

Outcome IB: Child Protective Services Cases Investigations Only (April 2015)

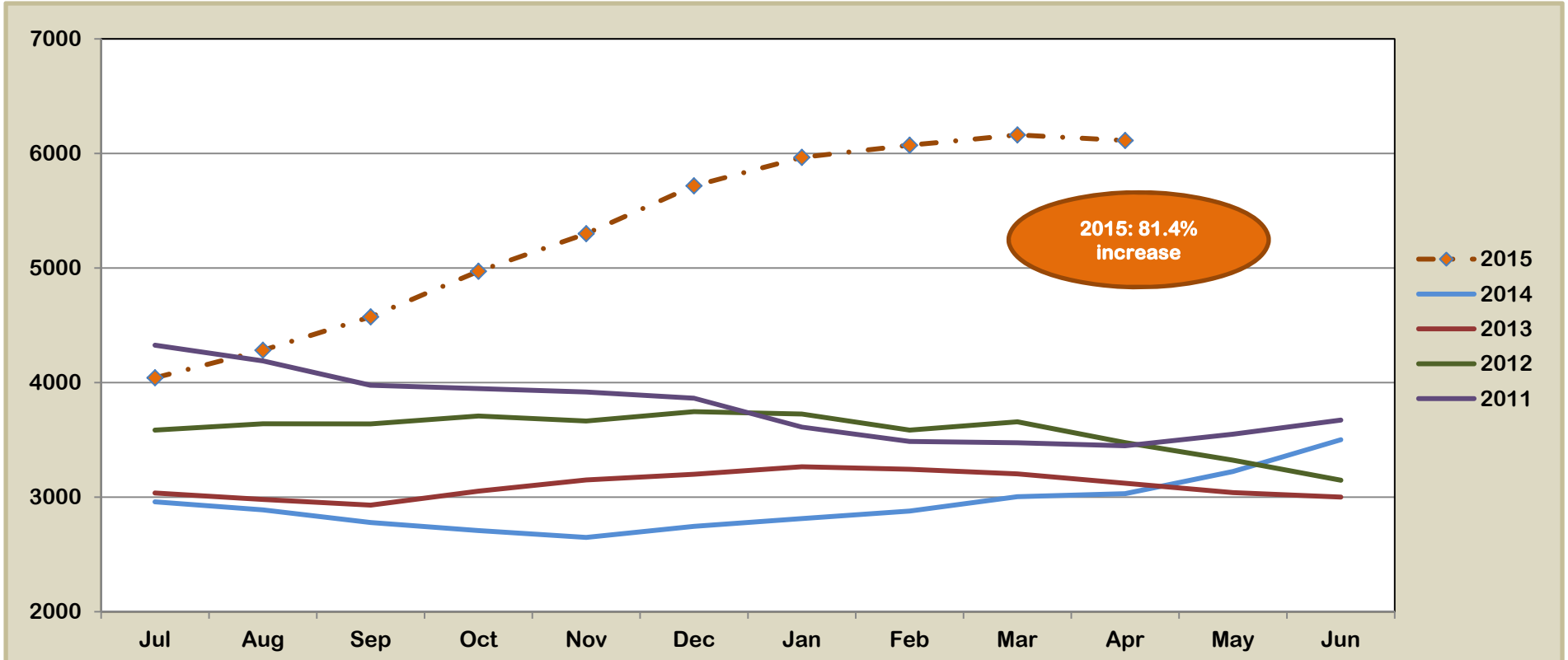


State FY	Jul	Aug	Sep	Oct	Nov	Dec	Jan	Feb	Mar	Apr	May	Jun	Average	% Increase
2015	9,755	9,093	10,735	11,344	10,105	9,021	8,669	8,538	9,638	9,589			9,649	17.5%
2014	4,680	4,721	5,278	6,035	6,669	7,751	8,738	9,499	11,106	11,578	11,896	10,578	8,211	38.2%
2013	4,336	5,396	6,460	7,509	7,216	6,635	6,133	5,552	5,689	5,525	5,753	5,089	5,941	10.2%
2012	3,732	4,742	5,563	5,949	6,027	5,832	5,709	6,047	6,579	5,276	4,829	4,394	5,390	45.7%
2011	3,744	3,624	3,878	3,780	3,443	3,055	2,531	3,010	4,165	4,264	4,483	4,414	3,699	-17.6%



Division of Family and Children Services

Outcome IC: Child Protective Services Cases Family Preservations Only (April 2015)

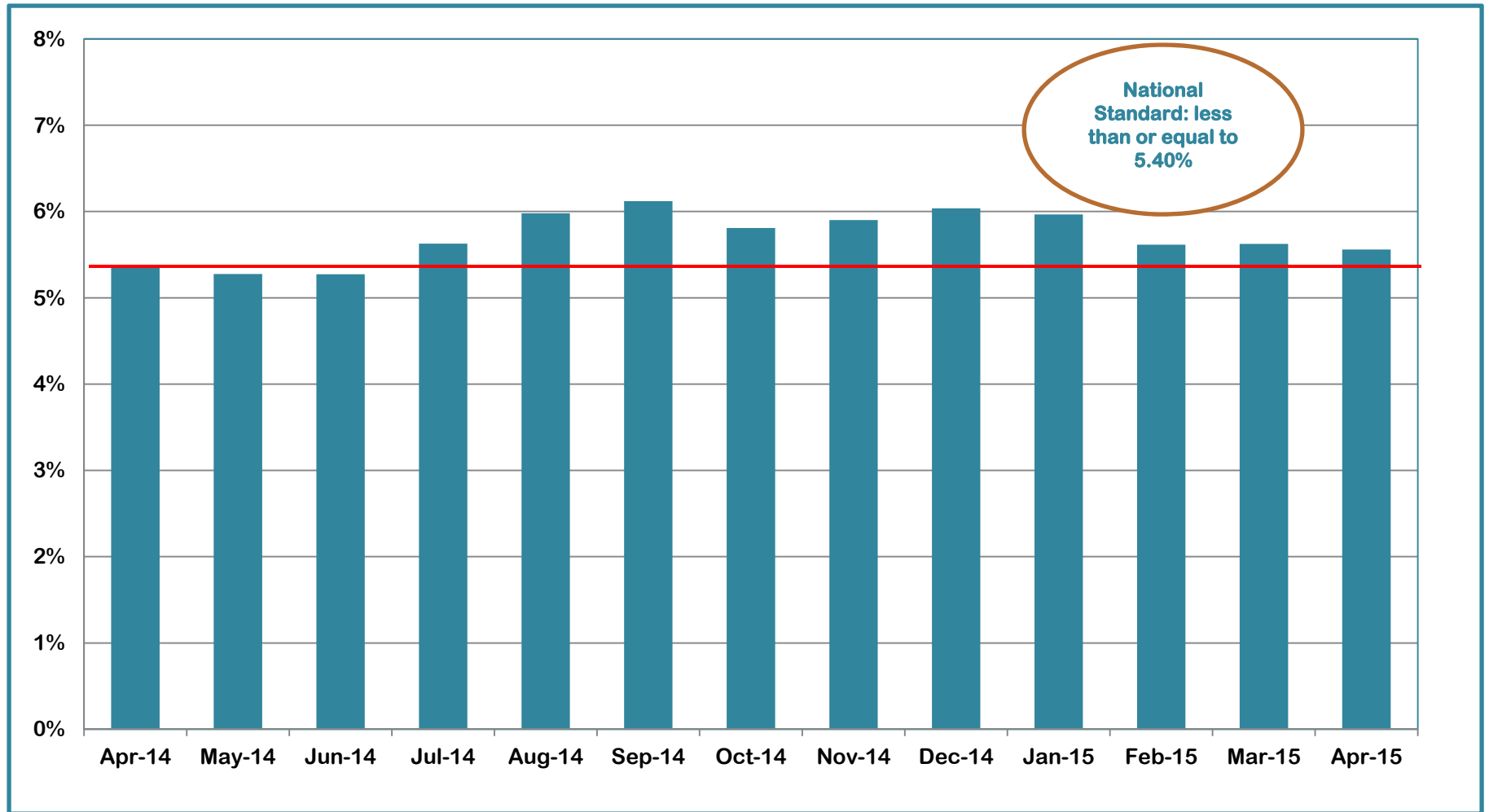


State FY	Jul	Aug	Sep	Oct	Nov	Dec	Jan	Feb	Mar	Apr	May	Jun	Average	% Increase
2015	4,042	4,283	4,574	4,972	5,300	5,718	5,965	6,071	6,161	6,113			5,320	81.4%
2014	2,960	2,889	2,779	2,709	2,649	2,746	2,813	2,879	3,004	3,031	3,224	3,501	2,932	-5.5%
2013	3,037	2,980	2,931	3,053	3,150	3,200	3,266	3,244	3,203	3,122	3,040	3,001	3,102	-13.2%
2012	3,586	3,641	3,640	3,709	3,665	3,747	3,726	3,586	3,658	3,476	3,323	3,148	3,575	-5.6%
2011	4,327	4,190	3,977	3,948	3,918	3,864	3,612	3,487	3,475	3,449	3,550	3,673	3,789	-30.4%



Division of Family and Children Services

Outcome II: Recurrence of Substantiated Child Maltreatment (April 2014 – April 2015)

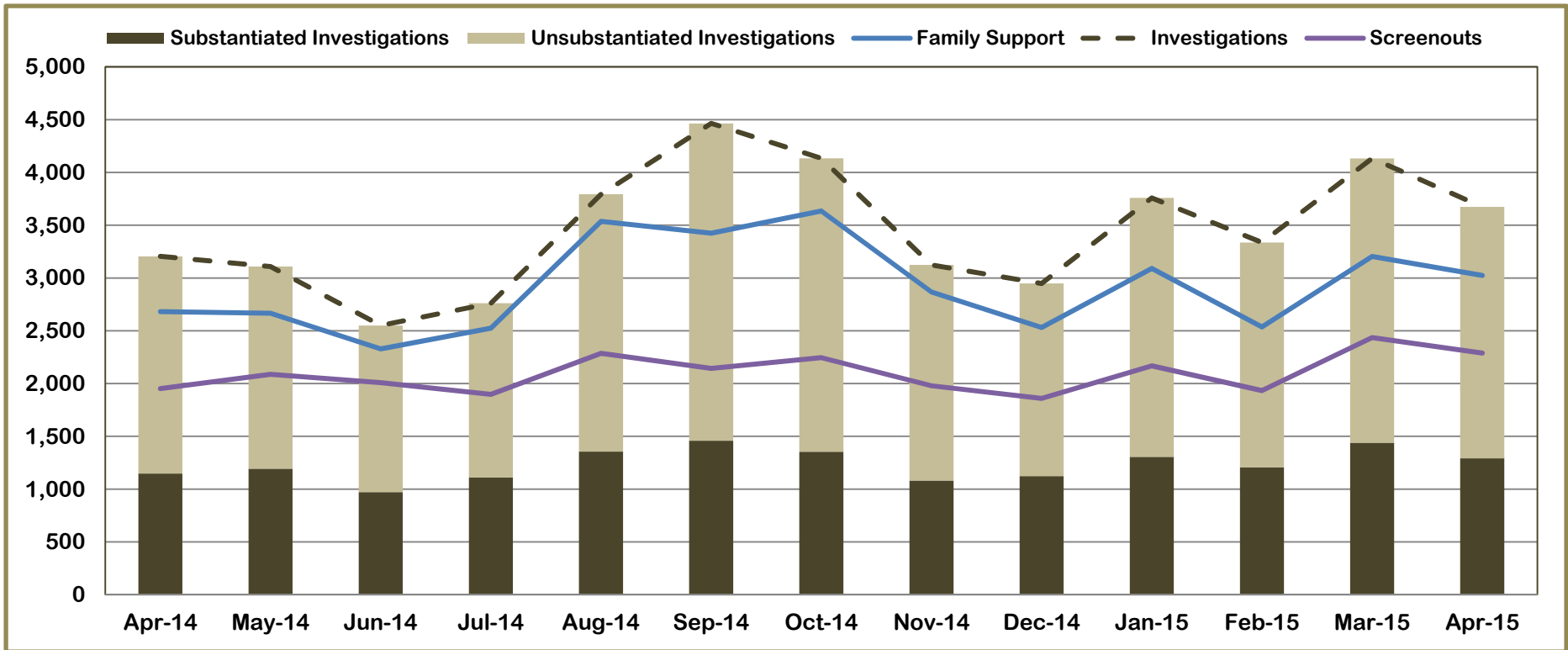


Apr-14	May-14	Jun-14	Jul-14	Aug-14	Sep-14	Oct-14	Nov-14	Dec-14	Jan-15	Feb-15	Mar-15	Apr-15
5.35%	5.28%	5.27%	5.63%	5.98%	6.12%	5.81%	5.90%	6.04%	5.97%	5.62%	5.62%	5.56%



Division of Family and Children Services

Outcome III: Disposition of Child Abuse and Neglect Reports (April 2014 - April 2015)

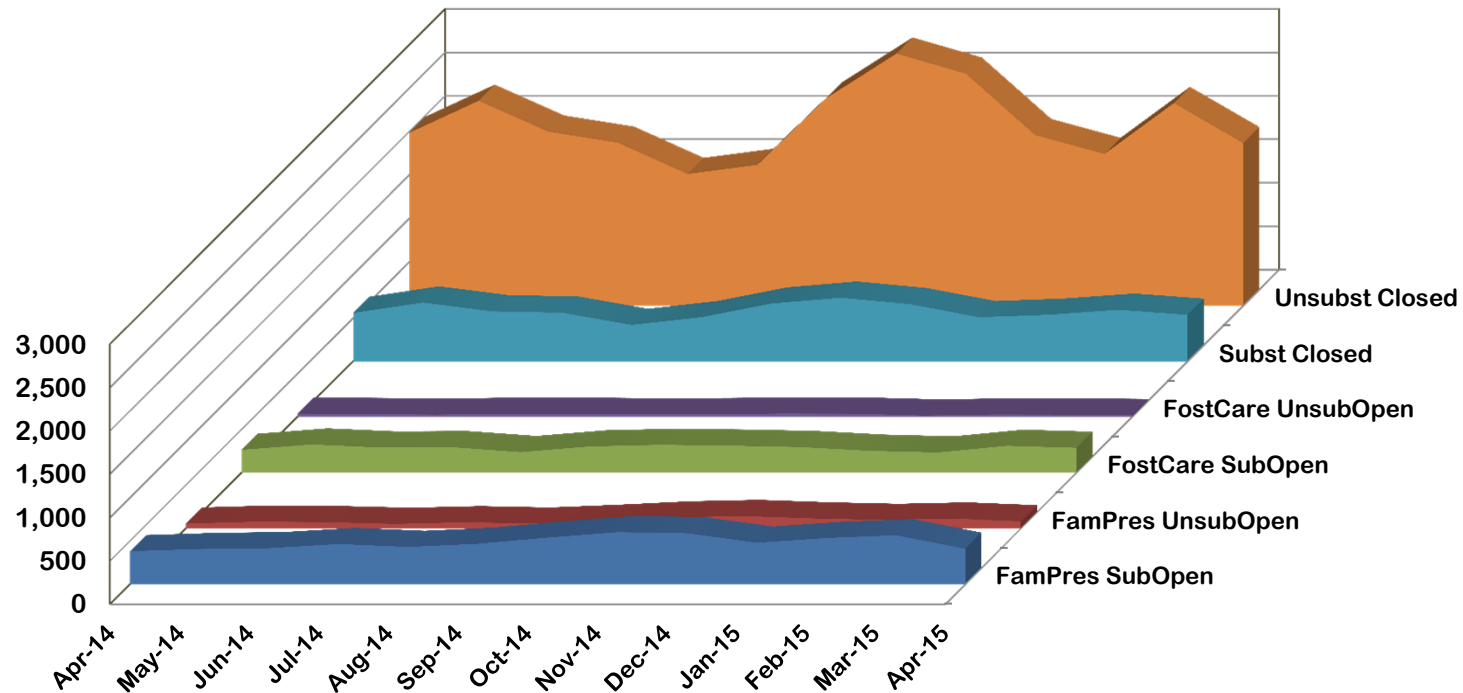


	Apr-14	May-14	Jun-14	Jul-14	Aug-14	Sep-14	Oct-14	Nov-14	Dec-14	Jan-15	Feb-15	Mar-15	Apr-15
Family Support	2,682	2,666	2,328	2,525	3,537	3,425	3,635	2,867	2,531	3,090	2,536	3,204	3,024
Screenouts	1,952	2,087	2,009	1,898	2,286	2,144	2,245	1,979	1,860	2,168	1,933	2,435	2,289
Investigations	3,205	3,109	2,550	2,761	3,793	4,464	4,134	3,124	2,948	3,759	3,336	4,133	3,674
Substantiated Investigations	1,148	1,193	972	1,112	1,355	1,459	1,354	1,081	1,123	1,305	1,208	1,439	1,292
Unsubstantiated Investigations	2,057	1,916	1,578	1,649	2,438	3,005	2,780	2,043	1,825	2,454	2,128	2,694	2,382



Division of Family and Children Services

Outcome IV: Subsequent Case-Type of Investigations by Disposition (April 2014 - April 2015)

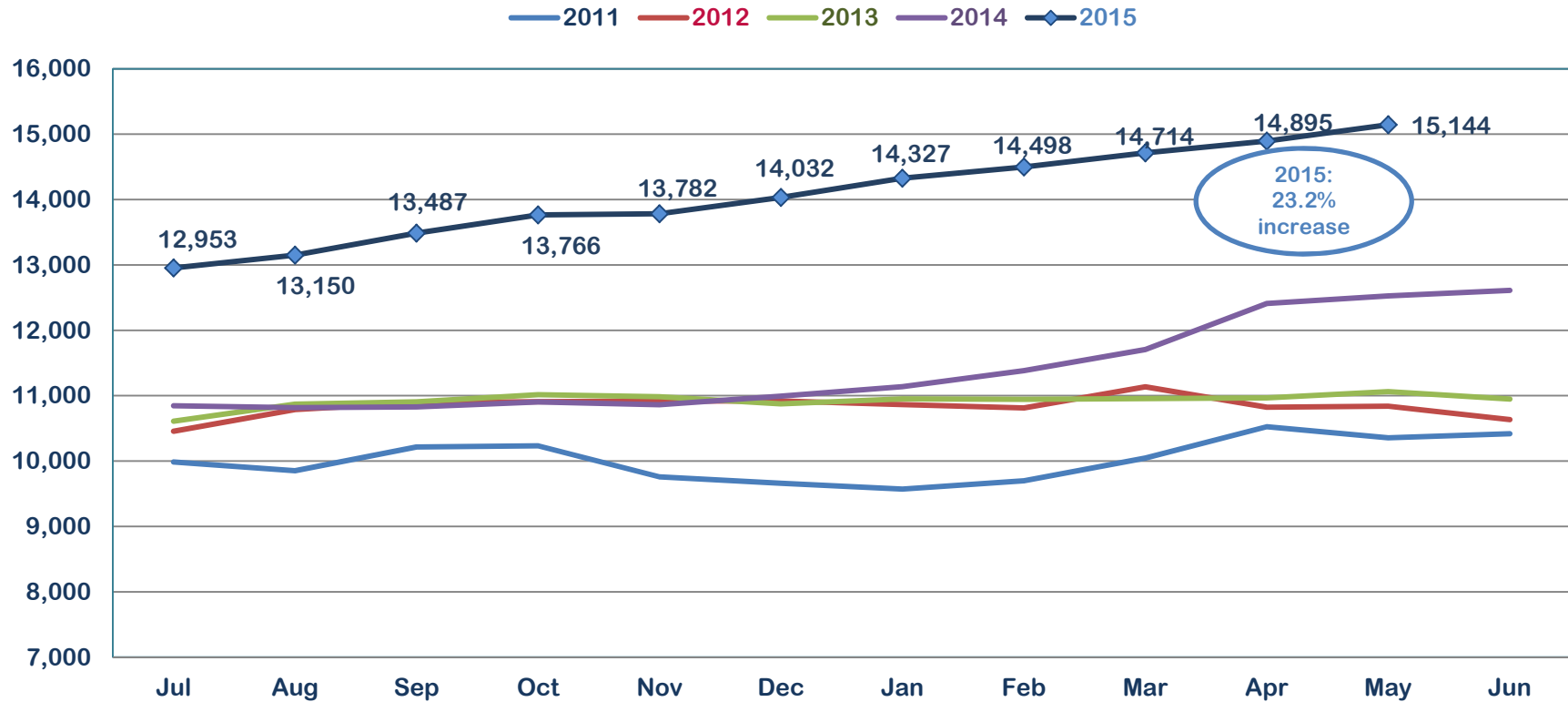


	Apr-14	May-14	Jun-14	Jul-14	Aug-14	Sep-14	Oct-14	Nov-14	Dec-14	Jan-15	Feb-15	Mar-15	Apr-15
FamPres SubOpen	381	407	417	465	431	468	539	601	589	480	534	566	410
FamPres UnsubOpen	57	80	74	54	73	57	89	128	145	117	99	116	83
FostCare SubOpen	265	327	292	297	239	305	323	314	298	255	235	312	289
FostCare UnsubOpen	40	34	29	39	37	31	34	41	39	18	30	29	23
Subst Closed	559	679	577	562	421	510	667	735	660	509	539	596	537
Unsubst Closed	1,988	2,358	2,002	1,875	1,515	1,620	2,392	2,901	2,670	1,963	1,746	2,332	1,870



Division of Family and Children Services

Outcome V: Number of Children in Placement Services (State Fiscal Year 2015 To Date)

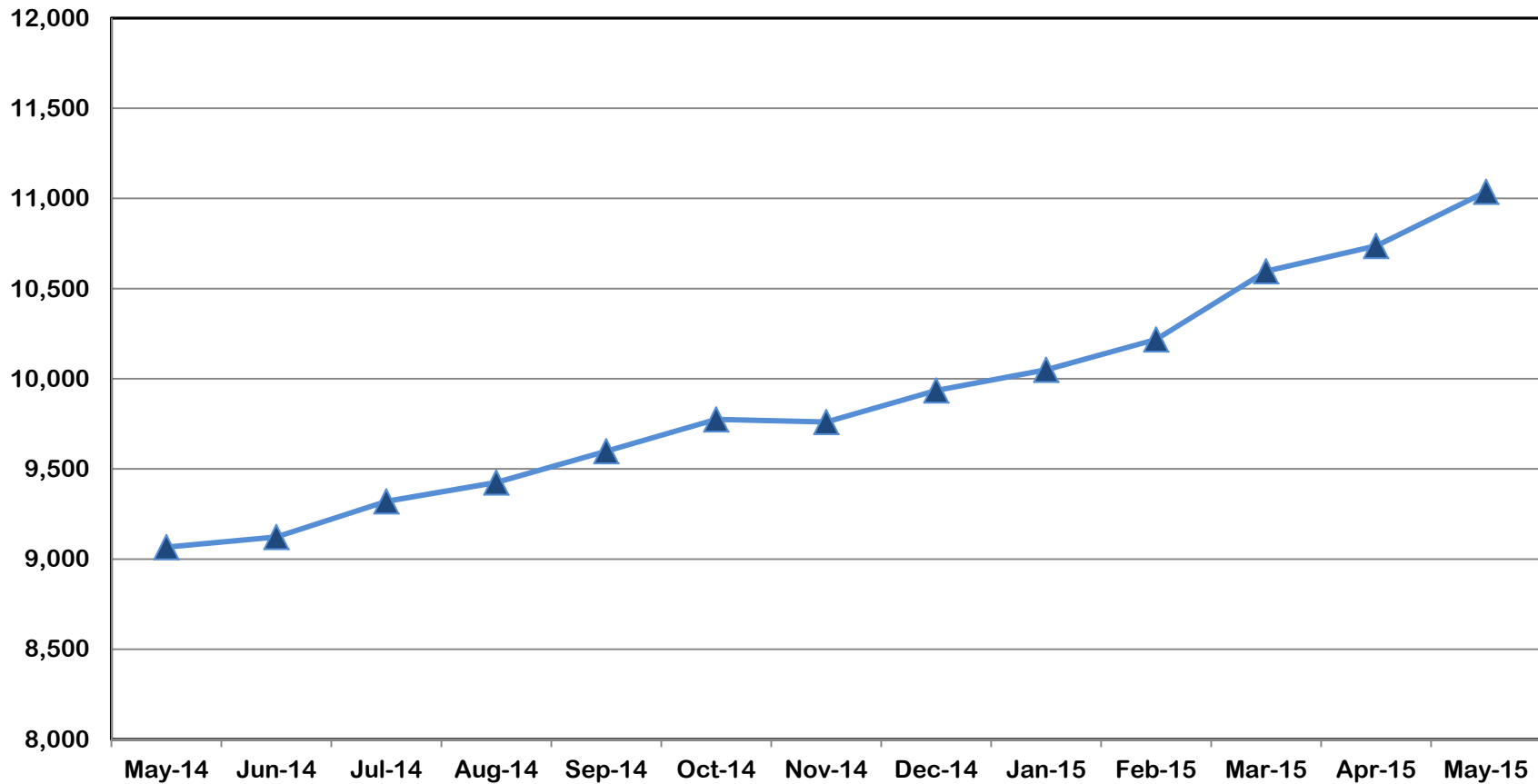


State FY	Jul	Aug	Sep	Oct	Nov	Dec	Jan	Feb	Mar	Apr	May	Jun	Average	% Increase
2015	12,953	13,150	13,487	13,766	13,782	14,032	14,327	14,498	14,714	14,895	15,144		14,068	23.2%
2014	10,847	10,817	10,828	10,903	10,861	10,992	11,139	11,384	11,707	12,410	12,527	12,611	11,419	4.5%
2013	10,610	10,871	10,907	11,016	10,984	10,875	10,951	10,944	10,955	10,966	11,063	10,948	10,924	0.8%
2012	10,457	10,788	10,893	10,908	10,917	10,919	10,863	10,813	11,135	10,823	10,839	10,634	10,832	8.0%
2011	9,985	9,853	10,215	10,234	9,758	9,660	9,572	9,698	10,047	10,526	10,355	10,419	10,027	--



Division of Family and Children Services

Outcome VI: Children in DFCS Custody Under the Age of 18 (May 2014 – May 2015)

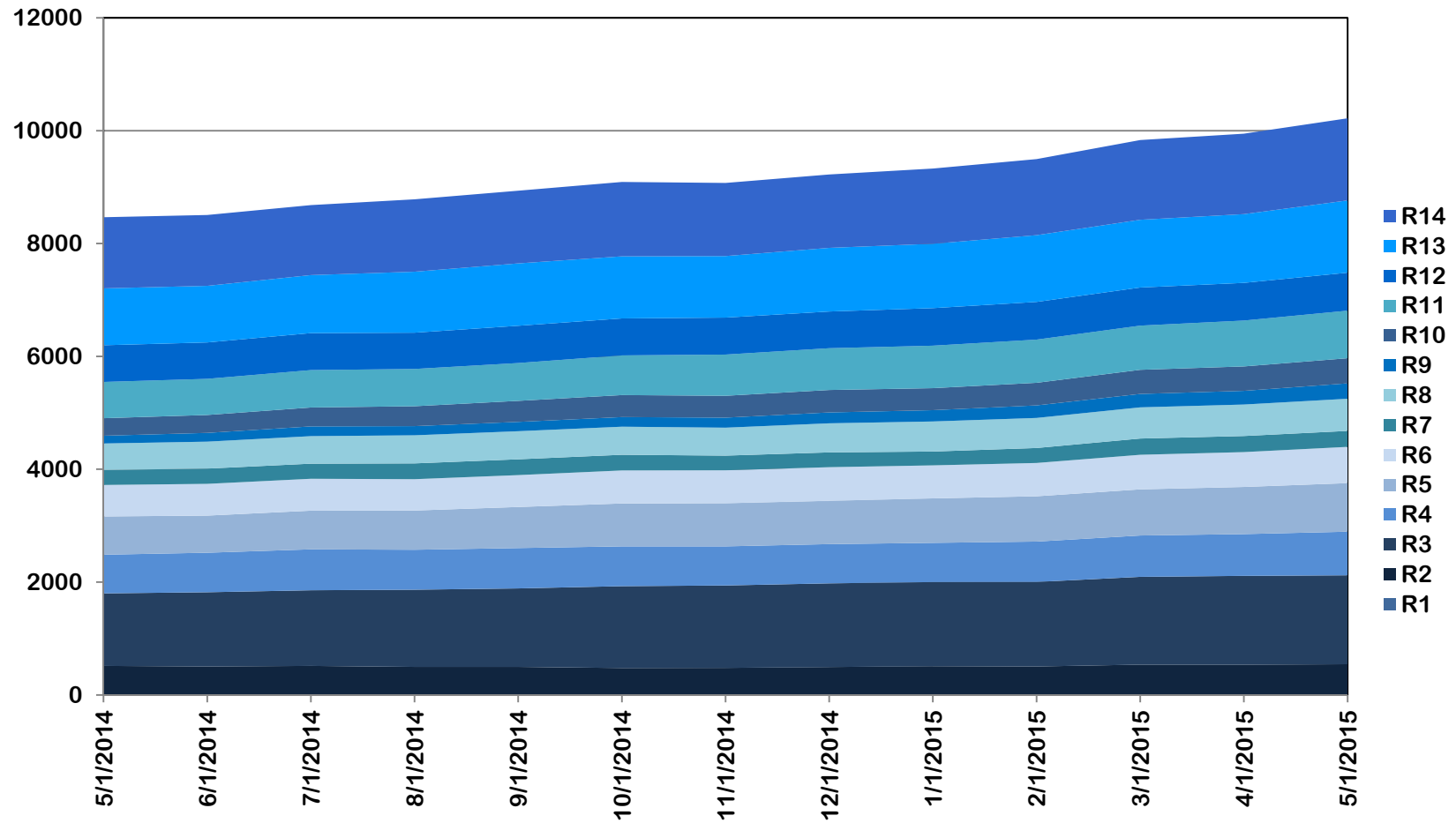


May-14	Jun-14	Jul-14	Aug-14	Sep-14	Oct-14	Nov-14	Dec-14	Jan-15	Feb-15	Mar-15	Apr-15	May-15
9,066	9,123	9,320	9,425	9,598	9,775	9,760	9,935	10,050	10,218	10,596	10,736	11,037



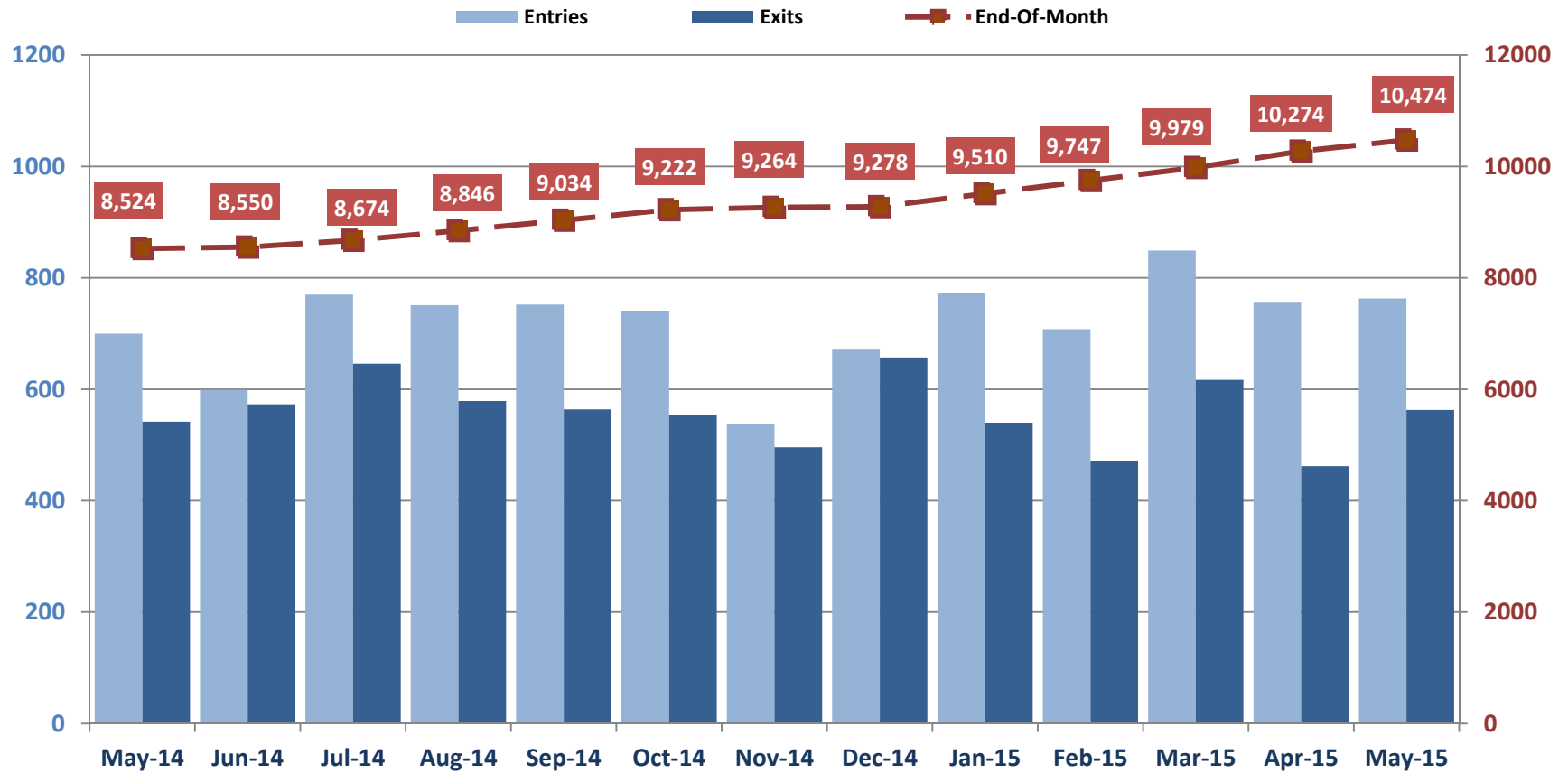
Division of Family and Children Services

Outcome VI-A: Children in DFCS Custody Under the Age of 18 - Regional (May 2014 – May 2015)



Division of Family and Children Services

Outcome VII: Comparison of Foster Care Entries and Exits (May 2014 – May 2015)

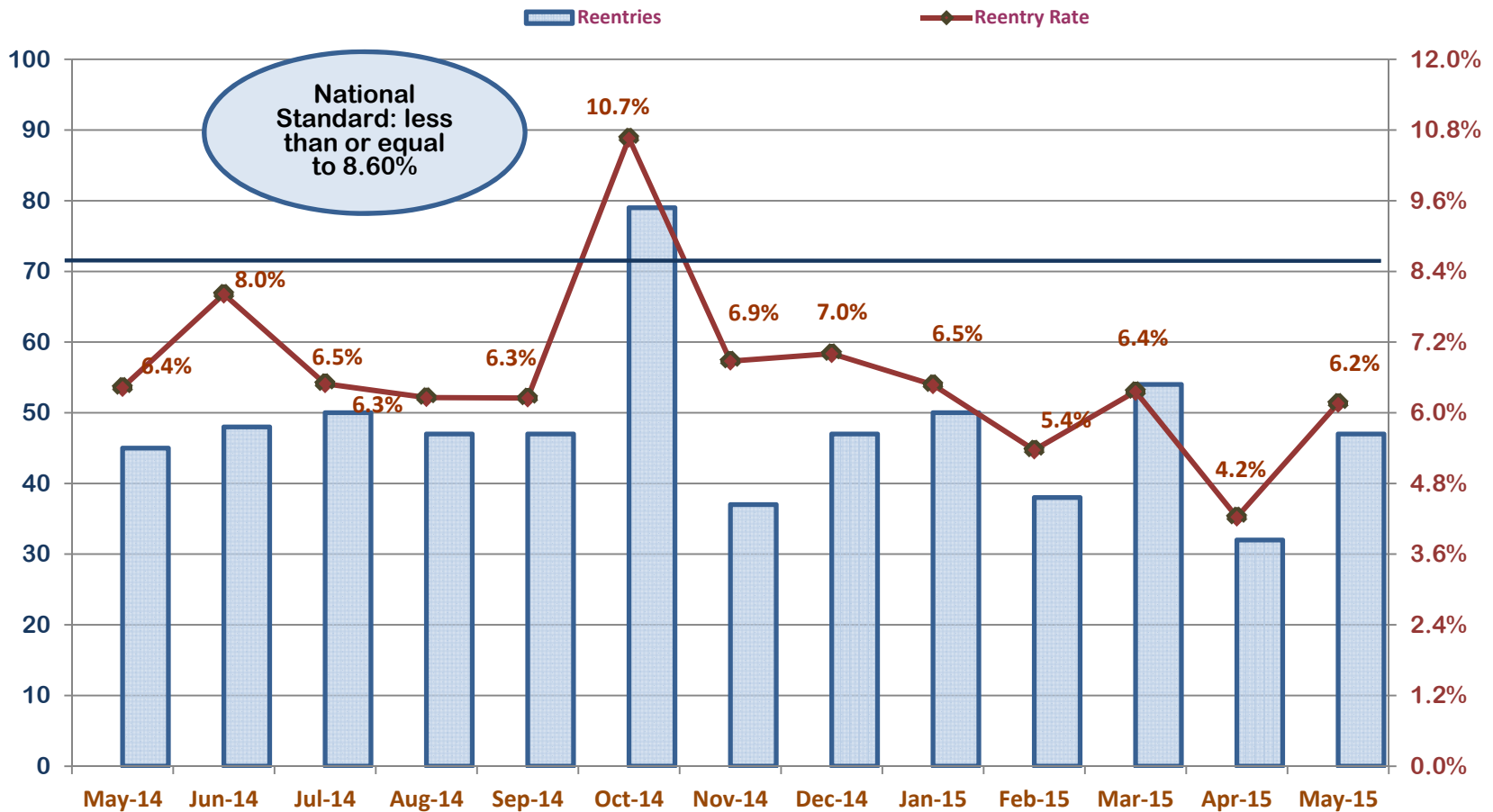


Month	May-14	Jun-14	Jul-14	Aug-14	Sep-14	Oct-14	Nov-14	Dec-14	Jan-15	Feb-15	Mar-15	Apr-15	May-15
Entries	700	599	770	751	752	741	538	671	772	708	849	757	763
Exits	542	573	646	579	564	553	496	657	540	471	617	462	563



Division of Family and Children Services

Outcome VIII: Foster Care Re-Entry Rate (May 2014 – May 2015)

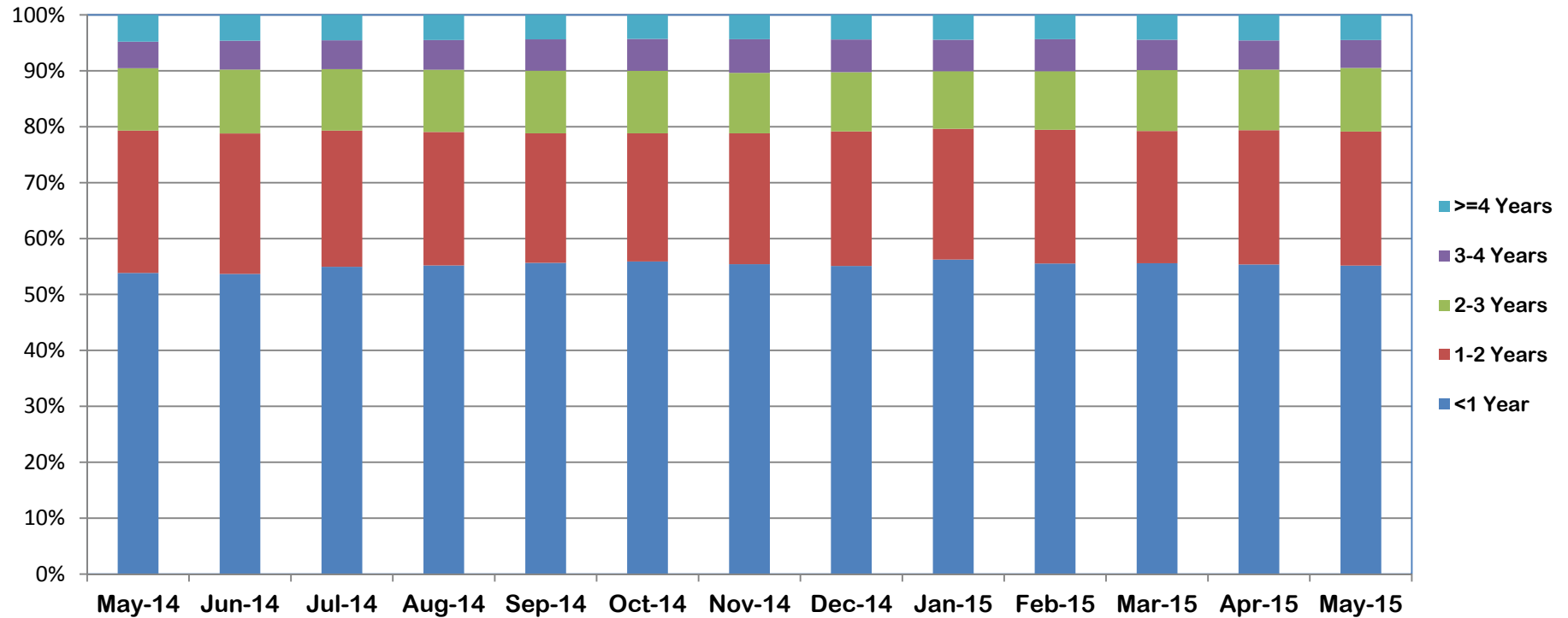


May-14	Jun-14	Jul-14	Aug-14	Sep-14	Oct-14	Nov-14	Dec-14	Jan-15	Feb-15	Mar-15	Apr-15	May-15
6.4%	8.0%	6.5%	6.3%	6.3%	10.7%	6.9%	7.0%	6.5%	5.4%	6.4%	4.2%	6.2%



Division of Family and Children Services

Outcome IX: Foster Care Length of Stay (May 2014 – May 2015)

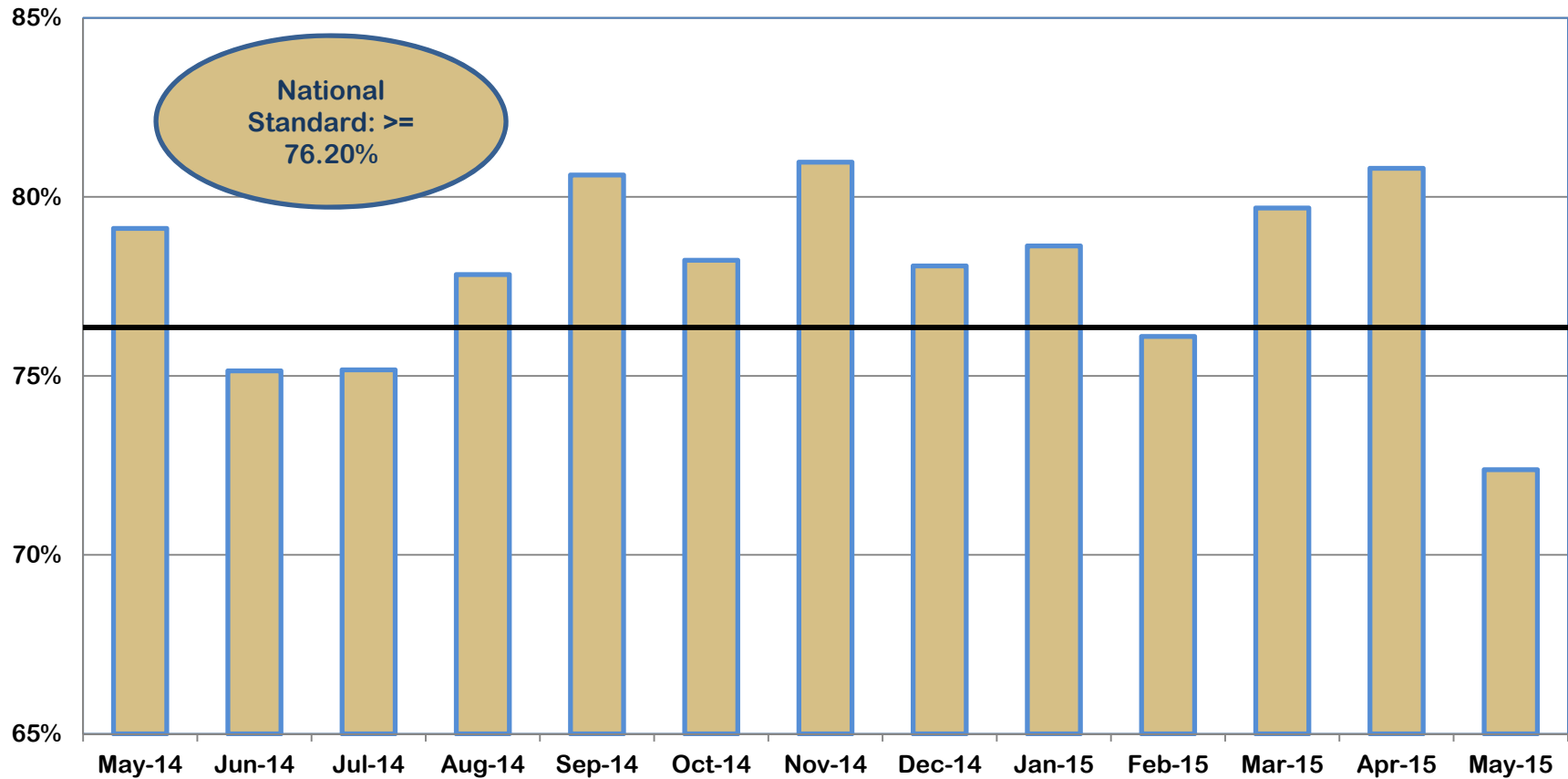


	May-14	Jun-14	Jul-14	Aug-14	Sep-14	Oct-14	Nov-14	Dec-14	Jan-15	Feb-15	Mar-15	Apr-15	May-15
<1 Year	53.9%	53.7%	54.9%	55.2%	55.7%	55.9%	55.4%	55.1%	56.2%	55.5%	55.6%	55.4%	55.2%
1-2 Years	25.4%	25.1%	24.4%	23.9%	23.2%	22.9%	23.4%	24.1%	23.4%	23.9%	23.6%	24.0%	24.0%
2-3 Years	11.2%	11.6%	11.2%	11.4%	11.0%	11.1%	11.2%	11.2%	10.8%	10.6%	10.3%	10.5%	10.9%
3-4 Years	4.7%	5.2%	5.2%	5.3%	5.6%	5.7%	6.0%	5.8%	5.6%	5.7%	5.4%	5.2%	5.0%
>=4 Years	4.8%	4.6%	4.5%	4.5%	4.4%	4.3%	4.3%	4.4%	4.4%	4.3%	4.4%	4.6%	4.5%



Division of Family and Children Services

Outcome X: Length of Time to Reunification (May 2014 – May 2015)

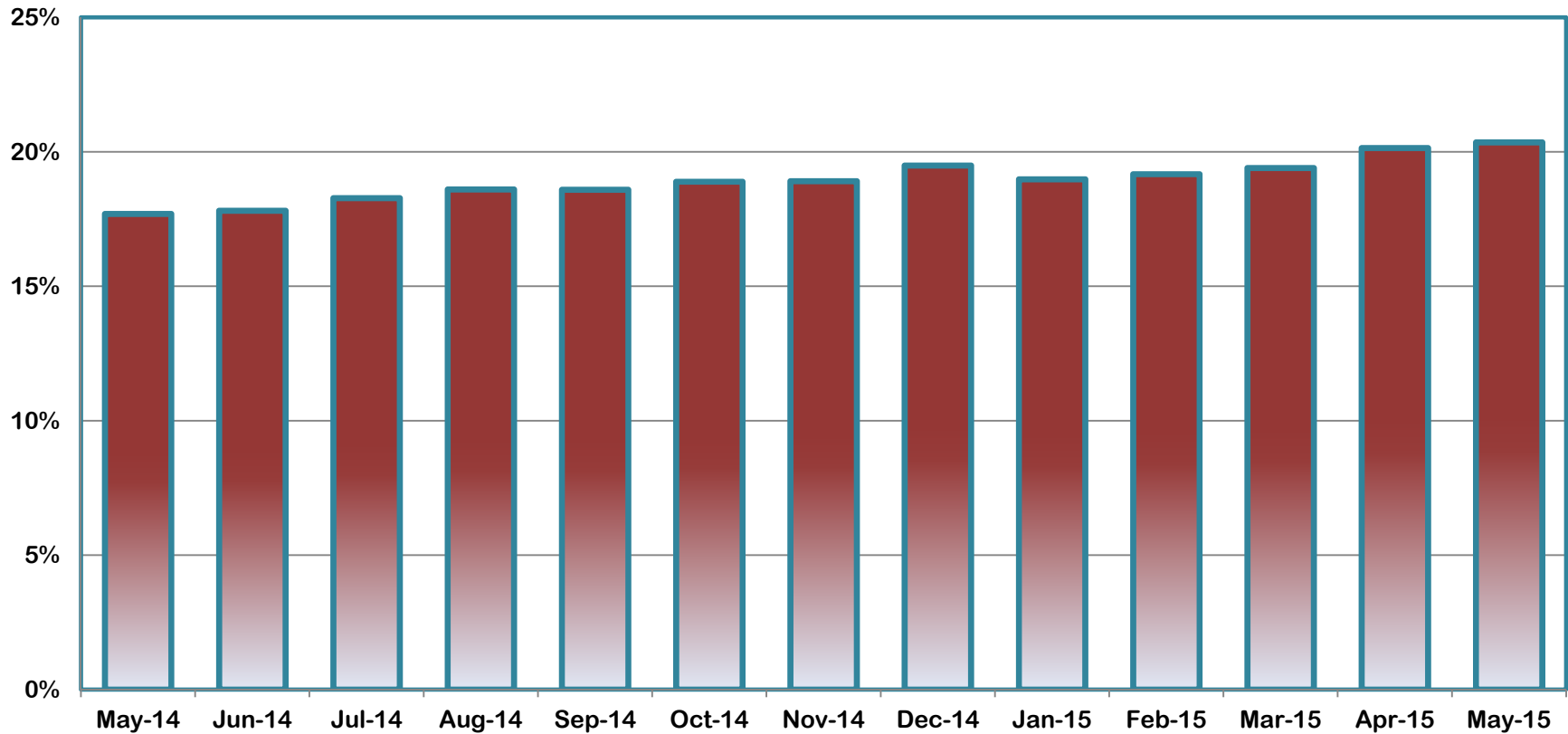


May-14	Jun-14	Jul-14	Aug-14	Sep-14	Oct-14	Nov-14	Dec-14	Jan-15	Feb-15	Mar-15	Apr-15	May-15
79.1%	75.1%	75.2%	77.8%	80.6%	78.2%	81.0%	78.1%	78.6%	76.1%	79.7%	80.8%	72.4%



Division of Family and Children Services

Outcome XI: Percent of Children Placed with Relatives (May 2014 – May 2015)

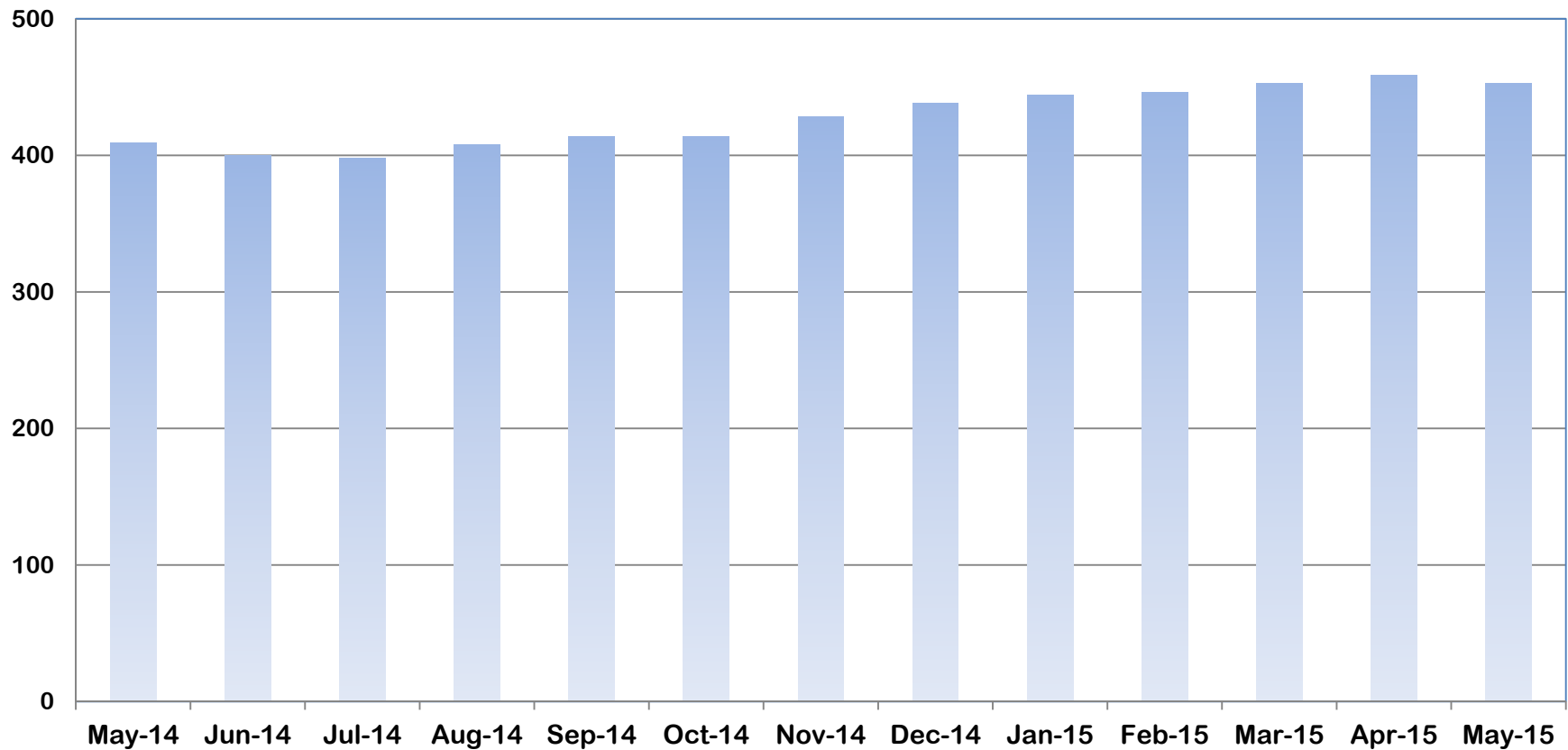


May-14	Jun-14	Jul-14	Aug-14	Sep-14	Oct-14	Nov-14	Dec-14	Jan-15	Feb-15	Mar-15	Apr-15	May-15
17.7%	17.8%	18.3%	18.6%	18.6%	18.9%	18.9%	19.5%	19.0%	19.2%	19.4%	20.1%	20.4%



Division of Family and Children Services

Outcome XII: Extended Youth Services (May 2014 – May 2015)

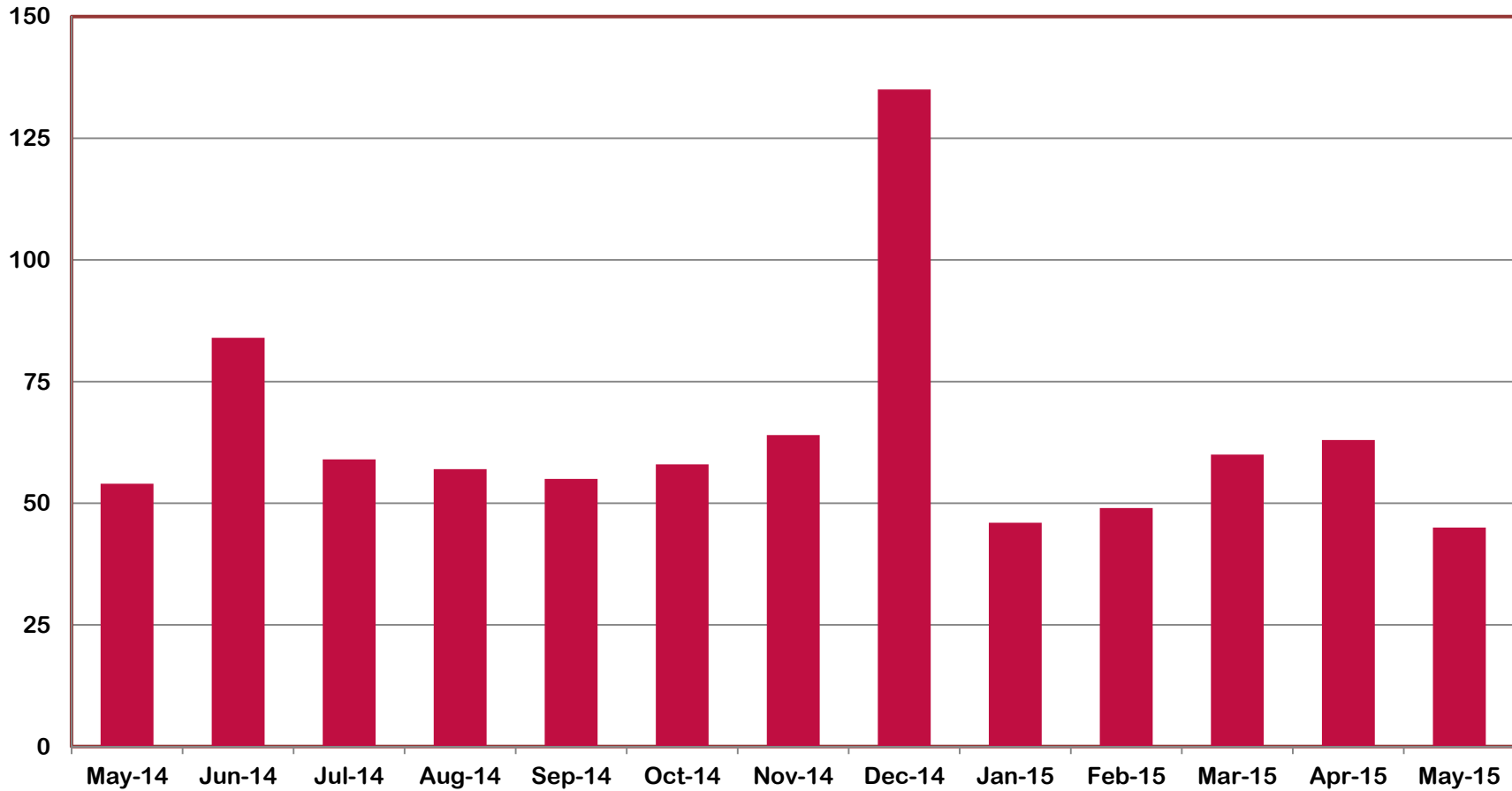


May-14	Jun-14	Jul-14	Aug-14	Sep-14	Oct-14	Nov-14	Dec-14	Jan-15	Feb-15	Mar-15	Apr-15	May-15
409	400	398	408	414	414	428	438	444	446	453	459	453



Division of Family and Children Services

Outcome XIII: Number of Finalized Adoptions (May 2014 – May 2015)

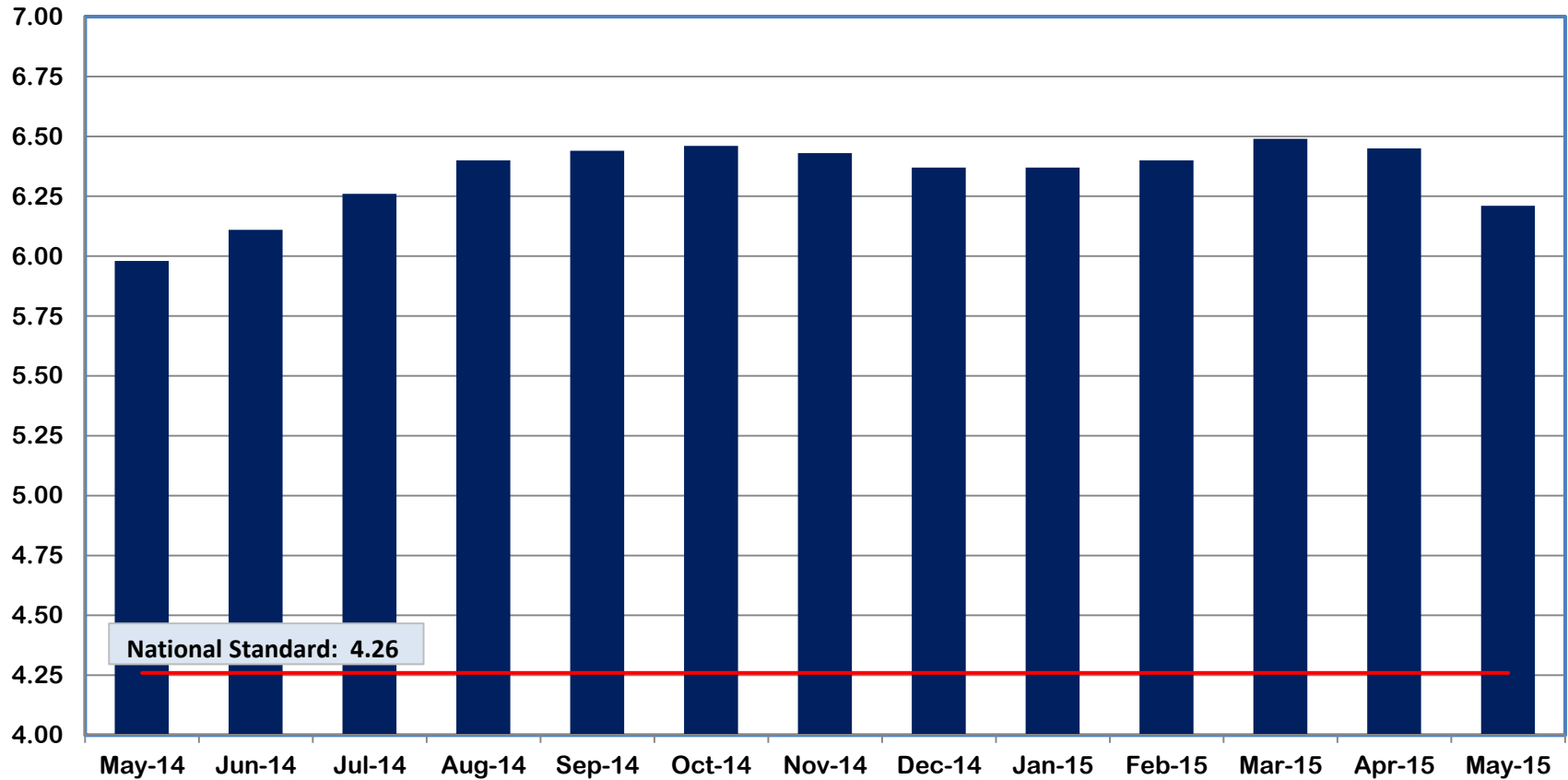


May-14	Jun-14	Jul-14	Aug-14	Sep-14	Oct-14	Nov-14	Dec-14	Jan-15	Feb-15	Mar-15	Apr-15	May-15
54	84	59	57	55	58	64	135	46	49	60	63	45



Division of Family and Children Services

Outcome XIV: Placement Stability Performance Coefficient (May 2014 - May 2015)



May-14	Jun-14	Jul-14	Aug-14	Sep-14	Oct-14	Nov-14	Dec-14	Jan-15	Feb-15	Mar-15	Apr-15	May-15
5.98	6.11	6.26	6.40	6.44	6.46	6.43	6.37	6.37	6.40	6.49	6.45	6.21



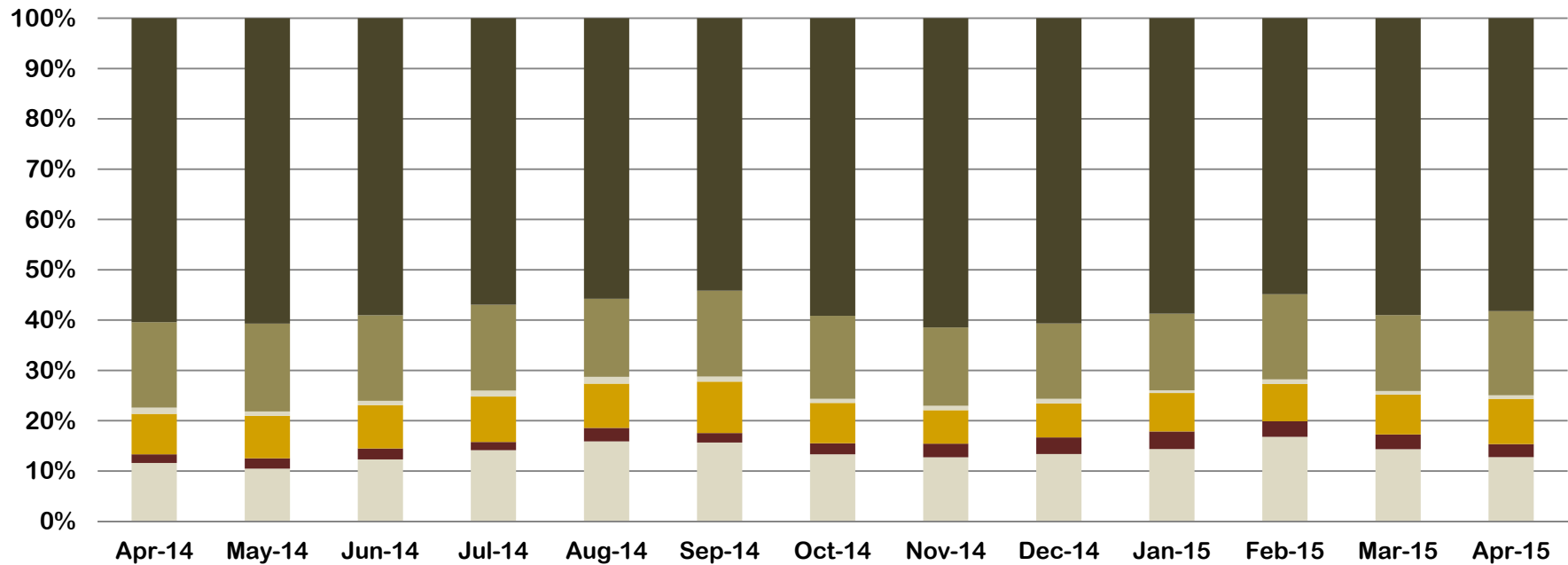
Division of Family and Children Services

Appendices



Appendix A

Outcome IV: Subsequent Case-Type of Investigations by Disposition (April 2014 - April 2015)



	Apr-14	May-14	Jun-14	Jul-14	Aug-14	Sep-14	Oct-14	Nov-14	Dec-14	Jan-15	Feb-15	Mar-15	Apr-15
Fam. Pres SubOpen	381	407	417	465	431	468	539	601	589	480	534	566	410
FamPres UnsubOpen	57	80	74	54	73	57	89	128	145	117	99	116	83
FostCare SubOpen	265	327	292	297	239	305	323	314	298	255	235	312	289
FostCare UnsubOpen	40	34	29	39	37	31	34	41	39	18	30	29	23
Subst Closed	559	679	577	562	421	510	667	735	660	509	539	596	537
Unsubst Closed	1,988	2,358	2,002	1,875	1,515	1,620	2,392	2,901	2,670	1,963	1,746	2,332	1,870



APPENDIX B

Regional Graphs of Outcome VI

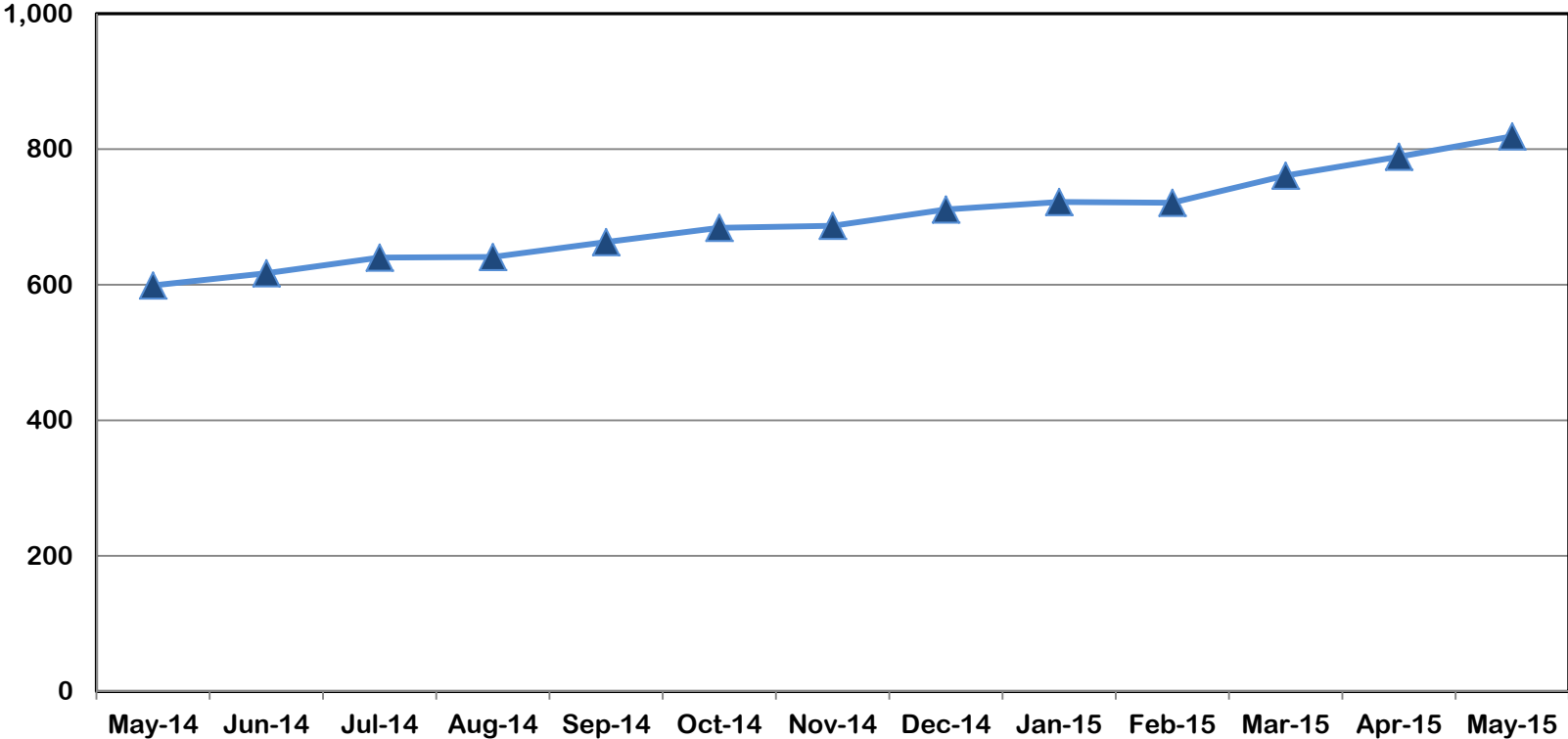
Children in DFCS Custody Under the Age of 18
(May 2014 – May 2015)



Division of Family and Children Services

Outcome VI: Children in DFCS Custody Under the Age of 18 (May 2014 – May 2015)

Region I



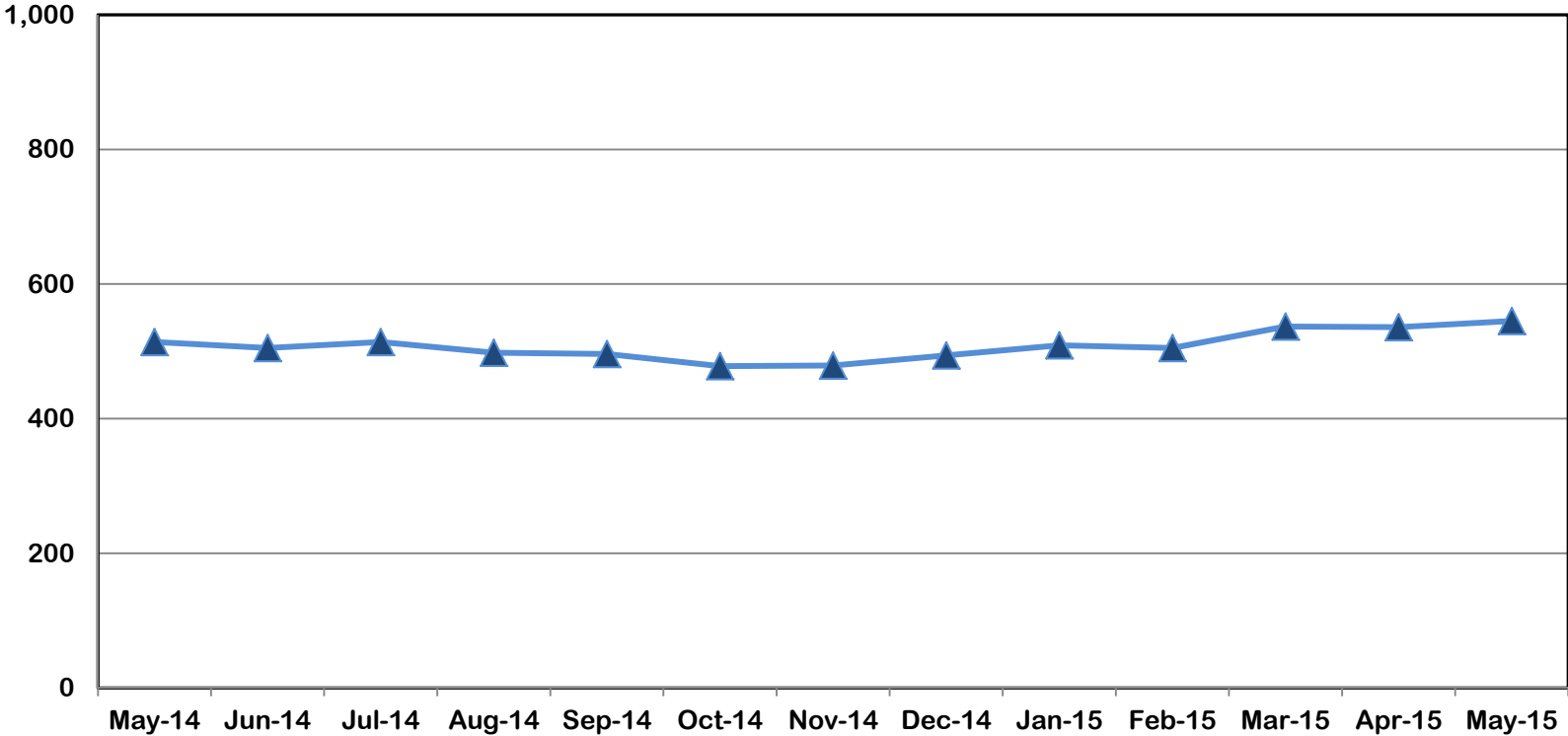
May-14	Jun-14	Jul-14	Aug-14	Sep-14	Oct-14	Nov-14	Dec-14	Jan-15	Feb-15	Mar-15	Apr-15	May-15
599	617	640	641	663	684	687	711	722	721	761	789	819



Division of Family and Children Services

Outcome VI: Children in DFCS Custody Under the Age of 18 (May 2014 – May 2015)

Region II

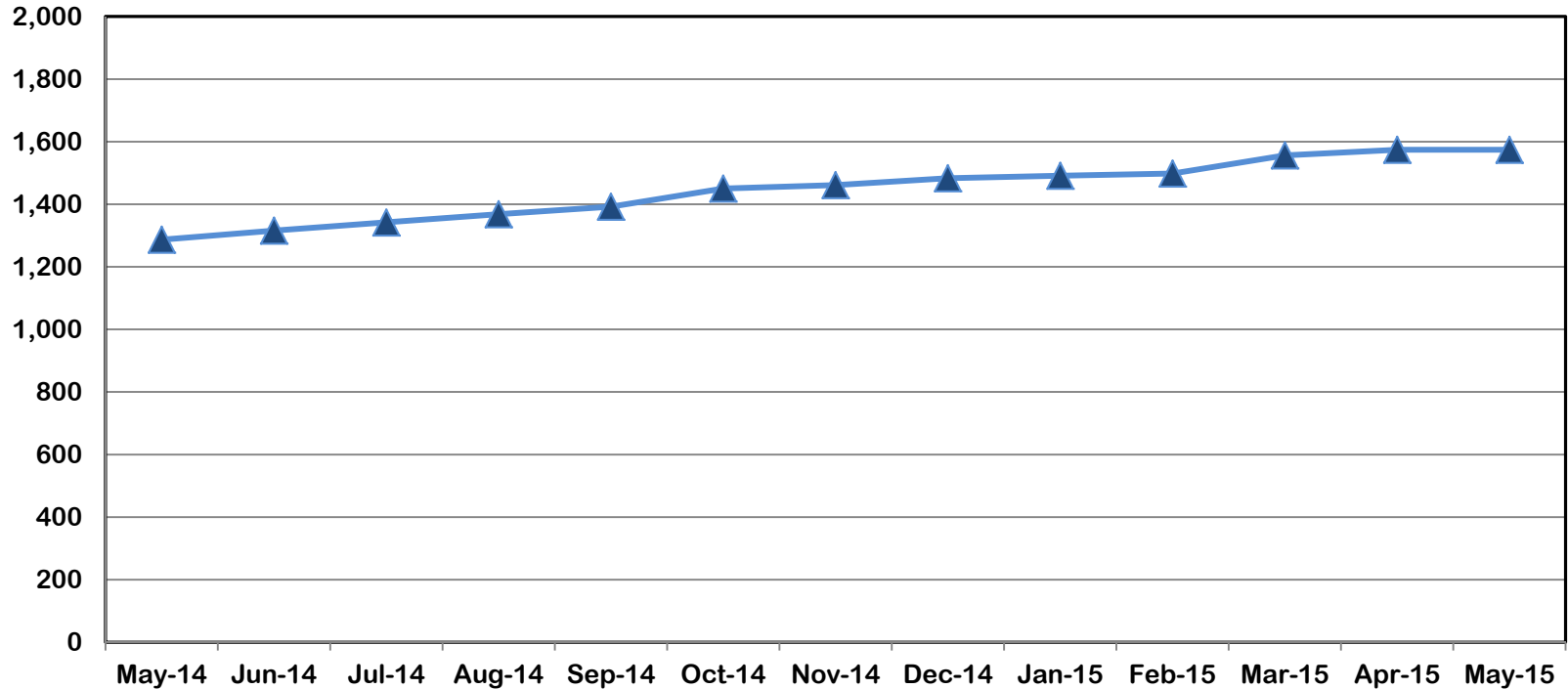


May-14	Jun-14	Jul-14	Aug-14	Sep-14	Oct-14	Nov-14	Dec-14	Jan-15	Feb-15	Mar-15	Apr-15	May-15
514	505	514	498	496	478	479	494	509	505	537	536	545



Outcome VI: Children in DFCS Custody Under the Age of 18 (May 2014 – May 2015)

Region III



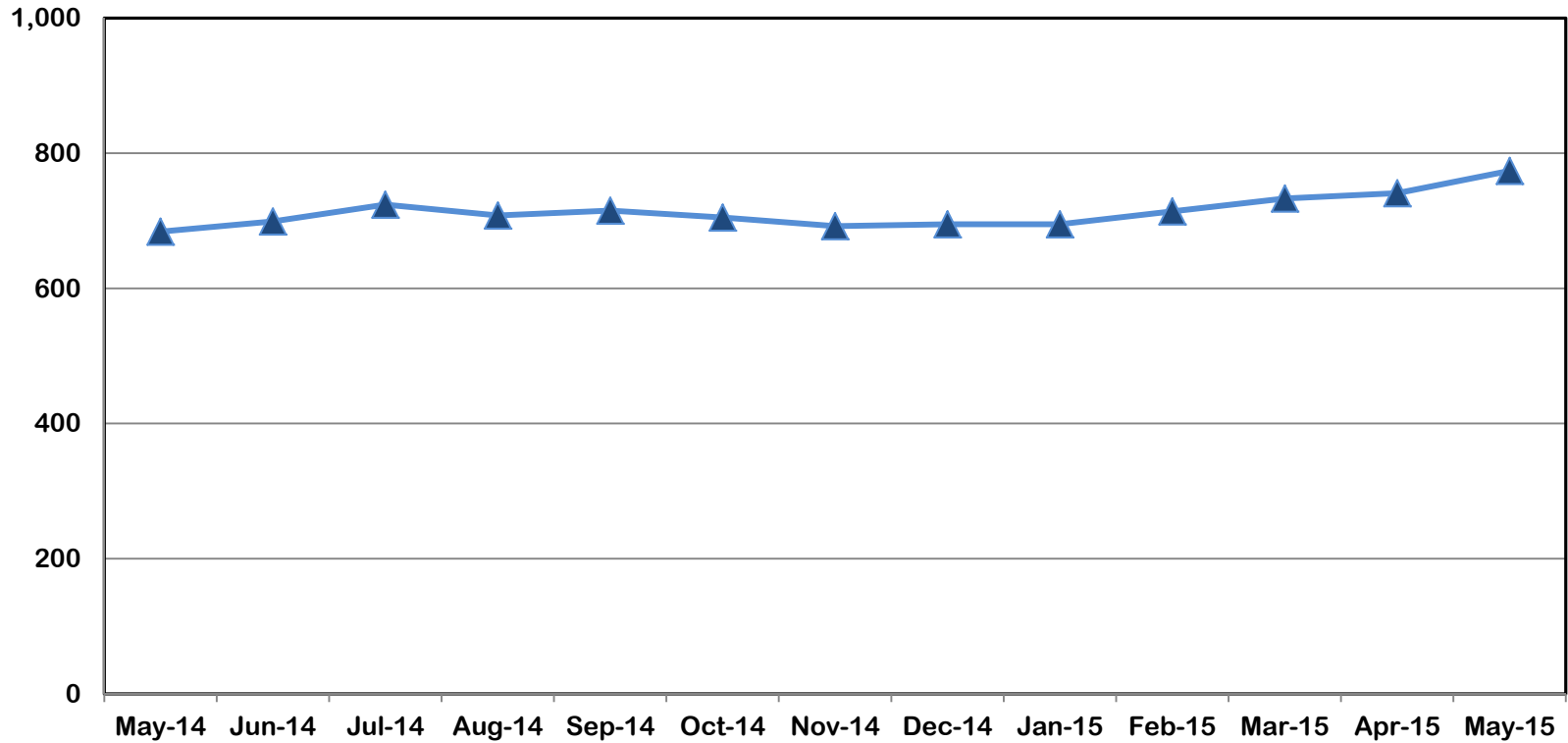
May-14	Jun-14	Jul-14	Aug-14	Sep-14	Oct-14	Nov-14	Dec-14	Jan-15	Feb-15	Mar-15	Apr-15	May-15
1,287	1,316	1,342	1,368	1,392	1,450	1,461	1,483	1,491	1,498	1,556	1,574	1,574



Division of Family and Children Services

Outcome VI: Children in DFCS Custody Under the Age of 18 (May 2014 – May 2015)

Region IV



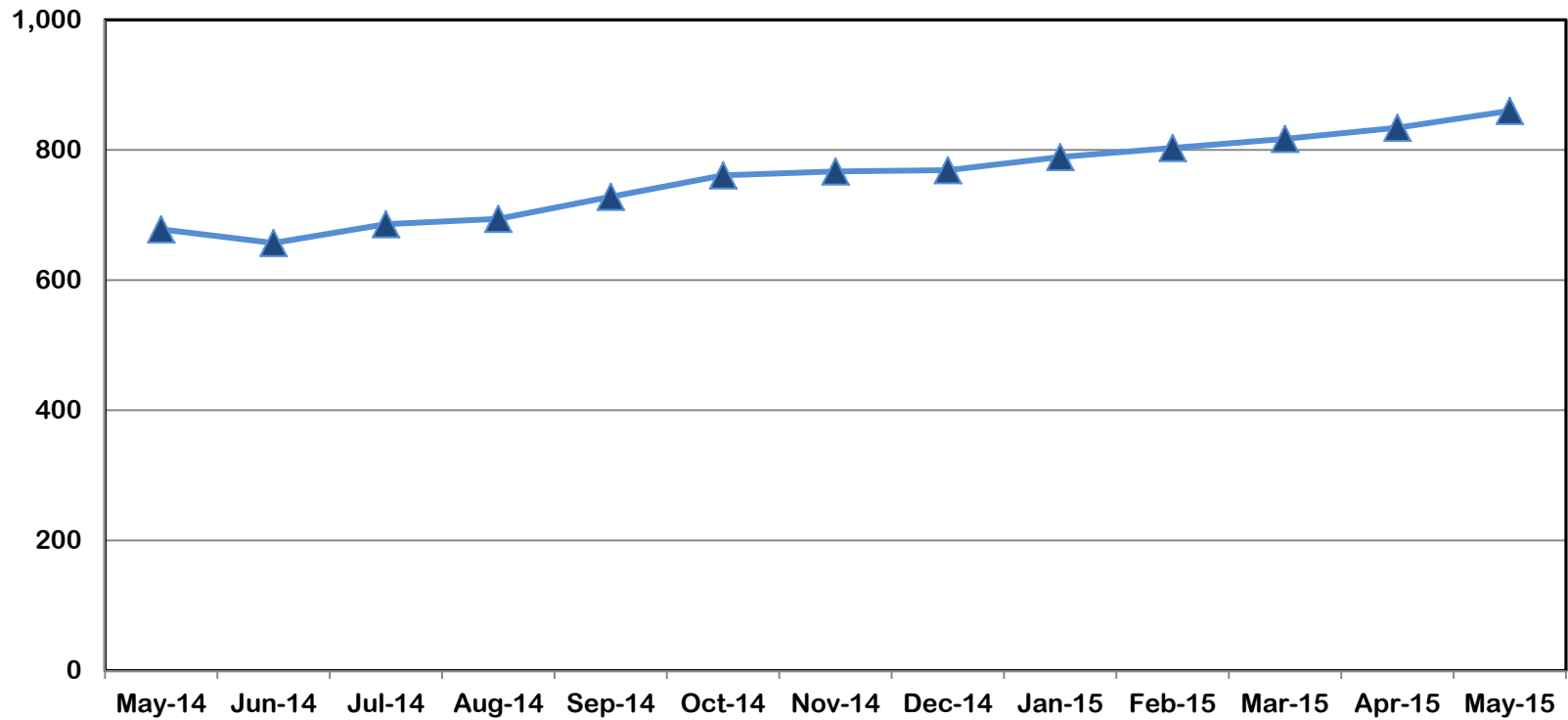
May-14	Jun-14	Jul-14	Aug-14	Sep-14	Oct-14	Nov-14	Dec-14	Jan-15	Feb-15	Mar-15	Apr-15	May-15
684	699	724	708	715	705	692	695	695	714	733	741	774



Division of Family and Children Services

Outcome VI: Children in DFCS Custody Under the Age of 18 (May 2014 – May 2015)

Region V



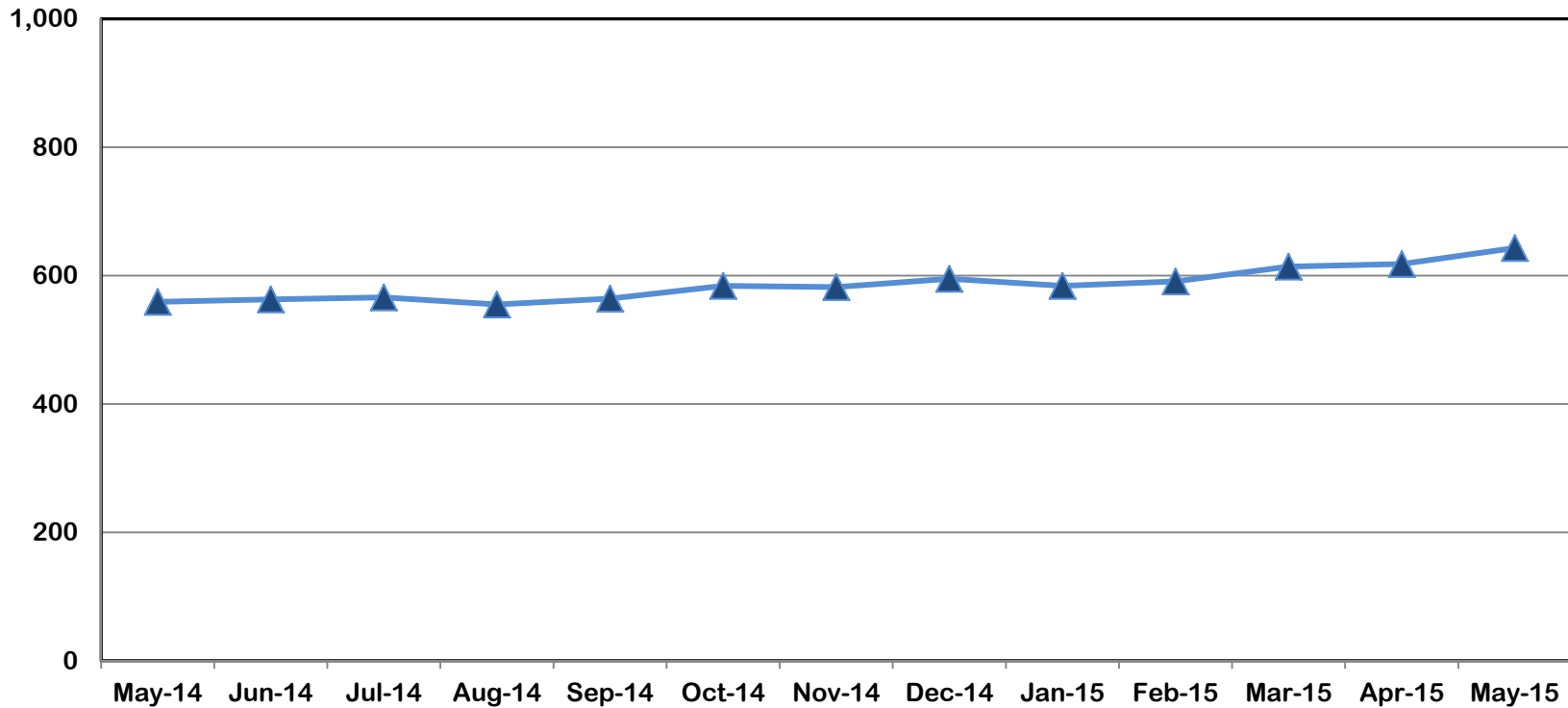
May-14	Jun-14	Jul-14	Aug-14	Sep-14	Oct-14	Nov-14	Dec-14	Jan-15	Feb-15	Mar-15	Apr-15	May-15
678	657	686	694	728	761	767	769	789	803	817	834	860



Division of Family and Children Services

Outcome VI: Children in DFCS Custody Under the Age of 18 (May 2014 – May 2015)

Region VI



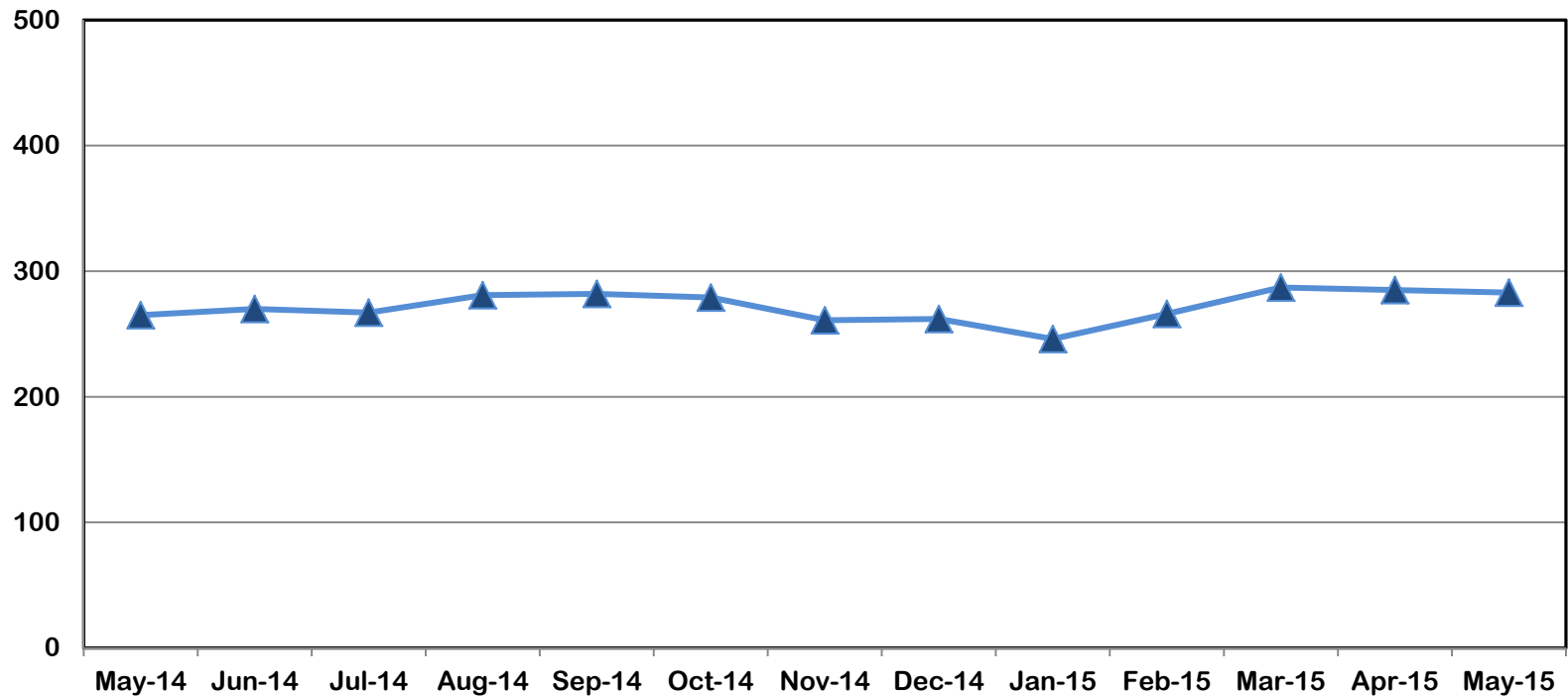
May-14	Jun-14	Jul-14	Aug-14	Sep-14	Oct-14	Nov-14	Dec-14	Jan-15	Feb-15	Mar-15	Apr-15	May-15
559	563	566	555	564	584	582	595	584	591	614	618	643



Division of Family and Children Services

Outcome VI: Children in DFCS Custody Under the Age of 18 (May 2014 – May 2015)

Region VII



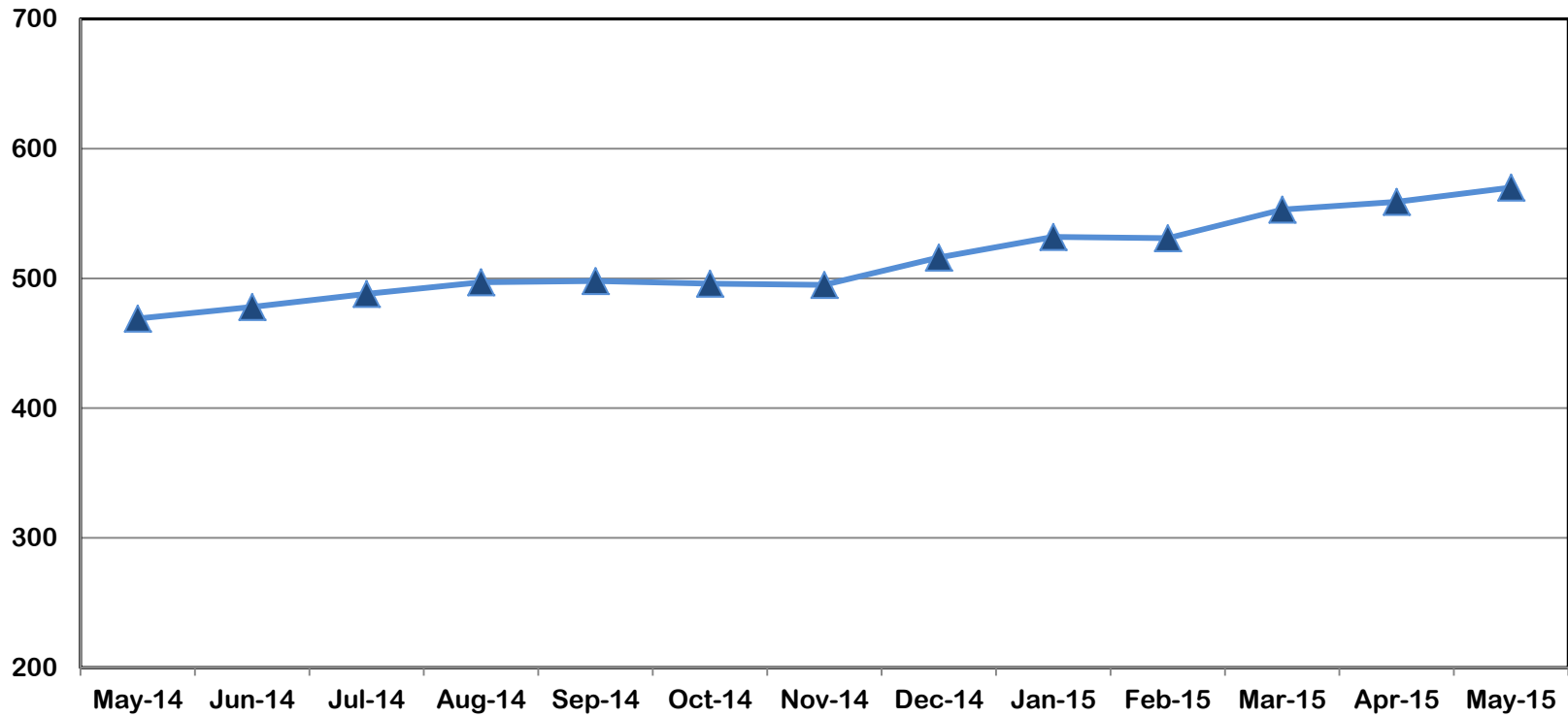
May-14	Jun-14	Jul-14	Aug-14	Sep-14	Oct-14	Nov-14	Dec-14	Jan-15	Feb-15	Mar-15	Apr-15	May-15
265	270	267	281	282	279	261	262	246	266	287	285	283



Division of Family and Children Services

Outcome VI: Children in DFCS Custody Under the Age of 18 (May 2014 – May 2015)

Region VIII



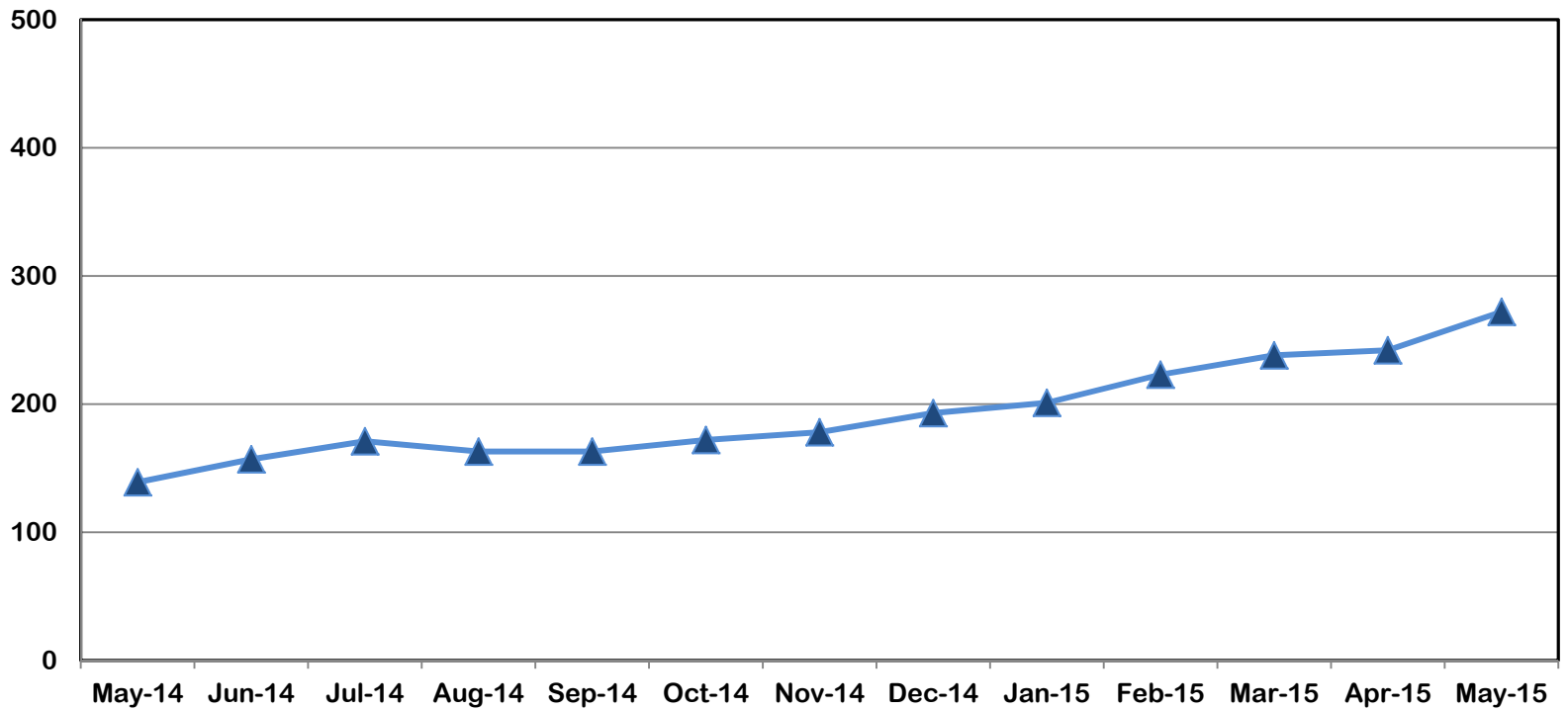
May-14	Jun-14	Jul-14	Aug-14	Sep-14	Oct-14	Nov-14	Dec-14	Jan-15	Feb-15	Mar-15	Apr-15	May-15
469	478	488	497	498	496	495	516	532	531	553	559	570



Division of Family and Children Services

Outcome VI: Children in DFCS Custody Under the Age of 18 (May 2014 – May 2015)

Region IX



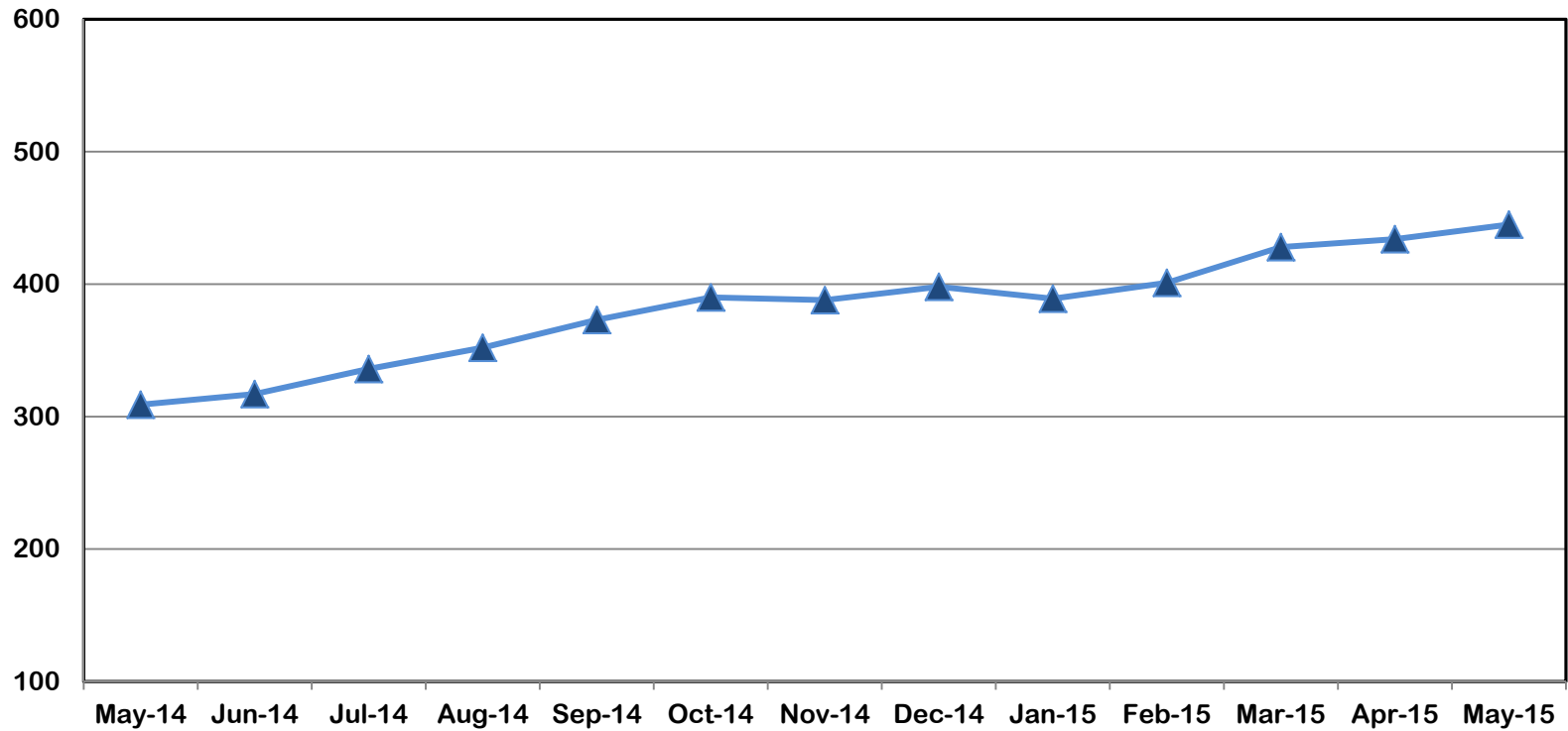
May-14	Jun-14	Jul-14	Aug-14	Sep-14	Oct-14	Nov-14	Dec-14	Jan-15	Feb-15	Mar-15	Apr-15	May-15
139	157	171	163	163	172	178	193	201	223	238	242	272



Division of Family and Children Services

Outcome VI: Children in DFCS Custody Under the Age of 18 (May 2014 – May 2015)

Region X



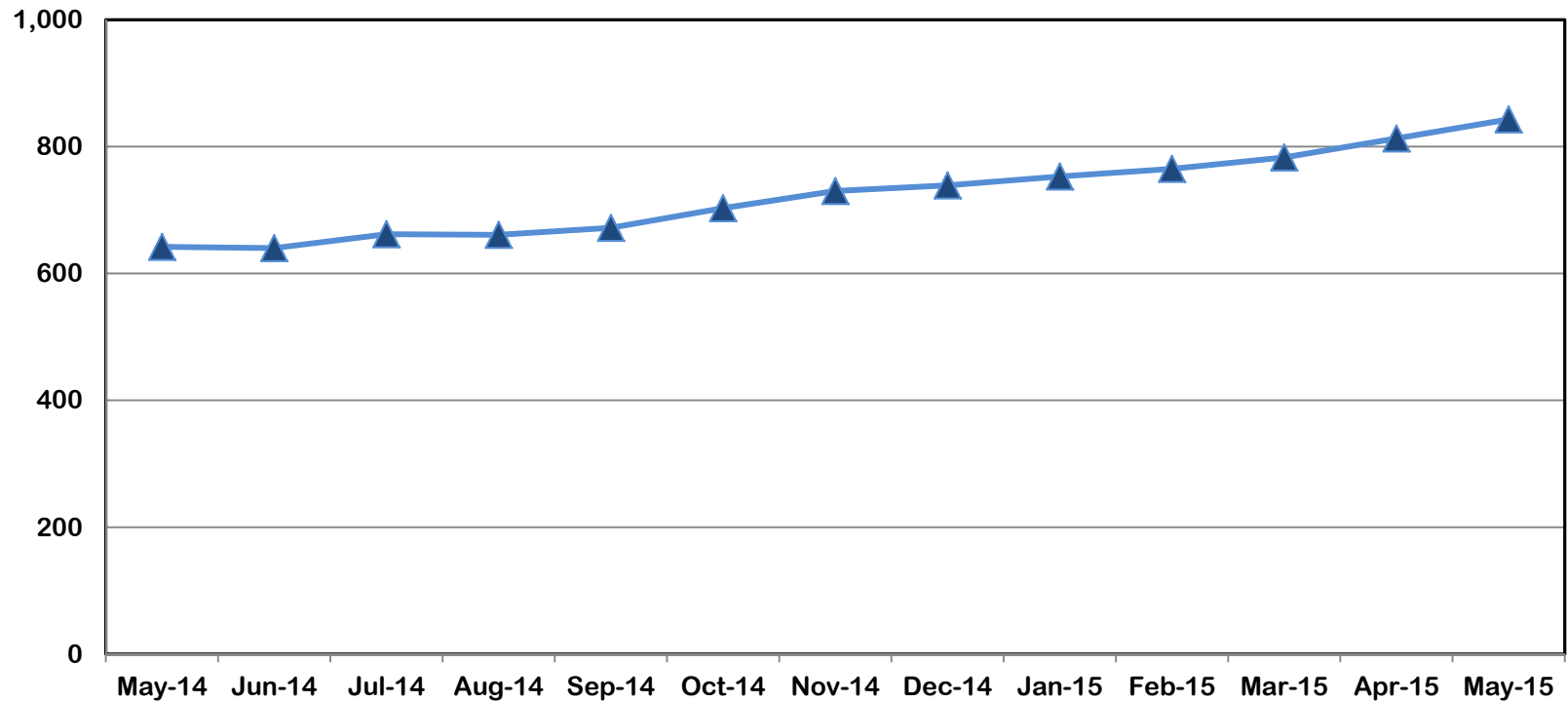
May-14	Jun-14	Jul-14	Aug-14	Sep-14	Oct-14	Nov-14	Dec-14	Jan-15	Feb-15	Mar-15	Apr-15	May-15
309	317	336	352	373	390	388	398	389	401	428	434	445



Division of Family and Children Services

Outcome VI: Children in DFCS Custody Under the Age of 18 (May 2014 – May 2015)

Region XI



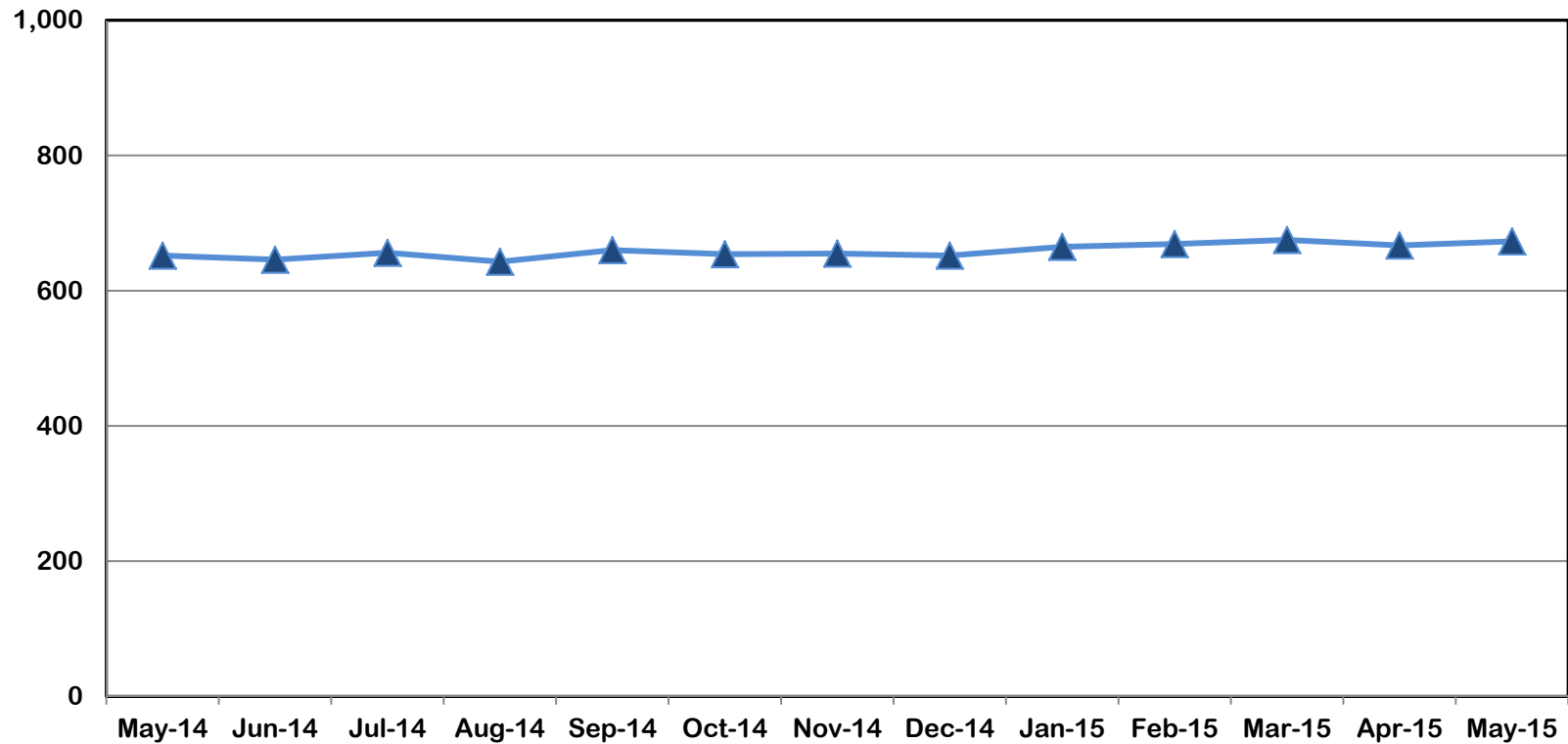
May-14	Jun-14	Jul-14	Aug-14	Sep-14	Oct-14	Nov-14	Dec-14	Jan-15	Feb-15	Mar-15	Apr-15	May-15
642	640	662	661	672	703	730	739	753	765	783	813	843



Division of Family and Children Services

Outcome VI: Children in DFCS Custody Under the Age of 18 (May 2014 – May 2015)

Region XII



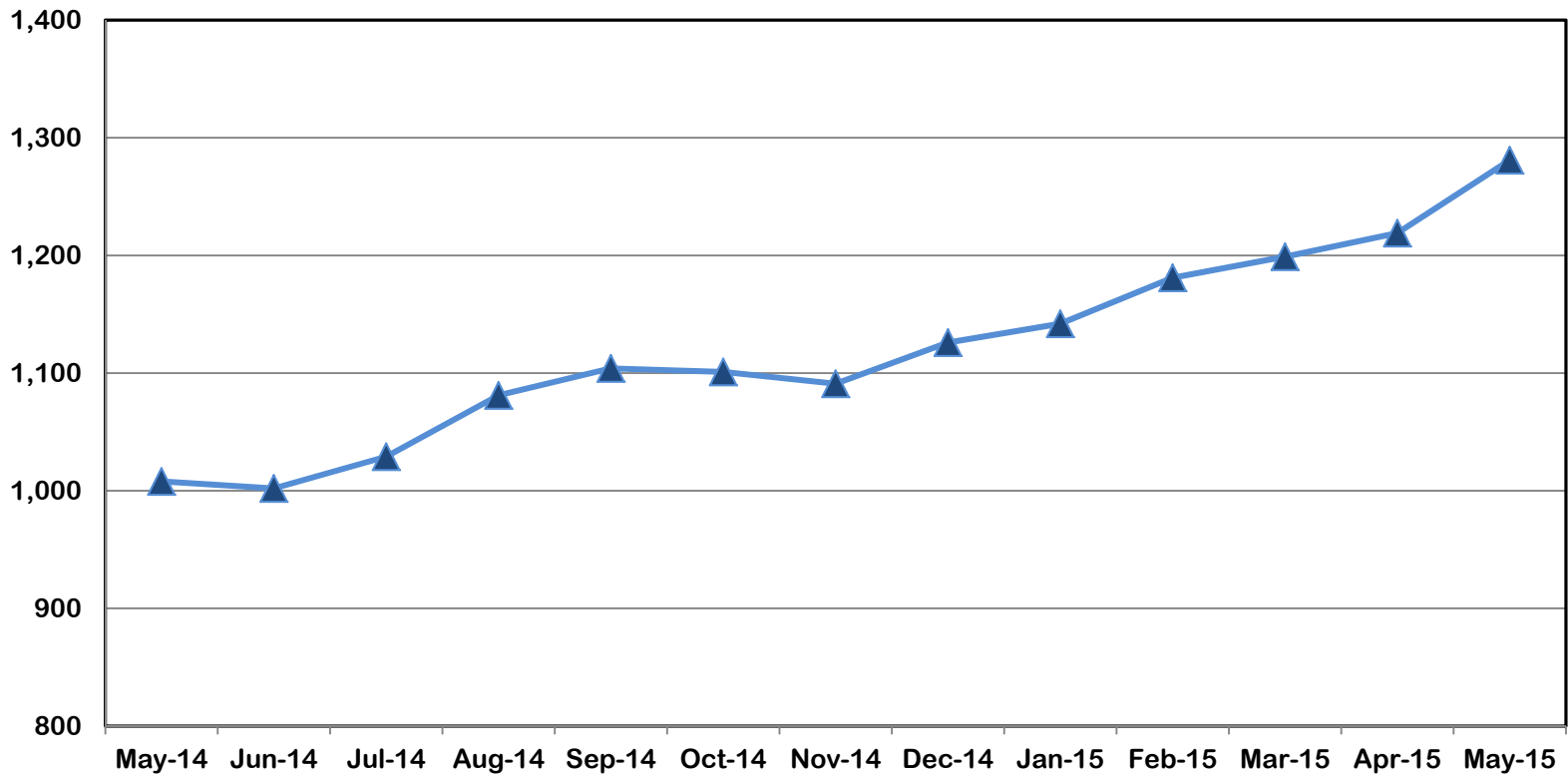
May-14	Jun-14	Jul-14	Aug-14	Sep-14	Oct-14	Nov-14	Dec-14	Jan-15	Feb-15	Mar-15	Apr-15	May-15
652	646	656	643	660	654	655	652	665	669	675	667	673



Division of Family and Children Services

Outcome VI: Children in DFCS Custody Under the Age of 18 (May 2014 – May 2015)

Region XIII



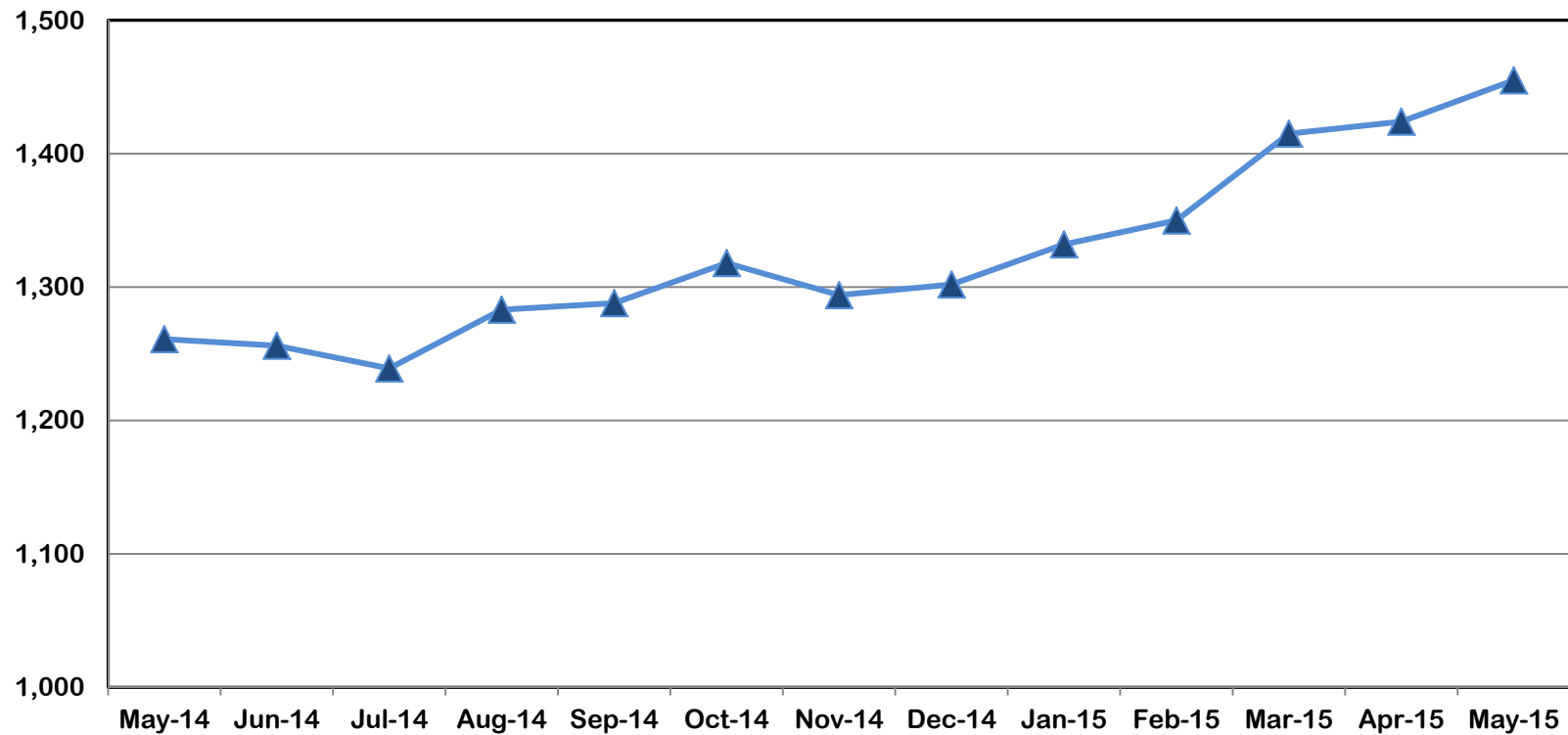
May-14	Jun-14	Jul-14	Aug-14	Sep-14	Oct-14	Nov-14	Dec-14	Jan-15	Feb-15	Mar-15	Apr-15	May-15
1,008	1,002	1,029	1,081	1,104	1,101	1,091	1,126	1,142	1,181	1,199	1,219	1,281



Division of Family and Children Services

Outcome VI: Children in DFCS Custody Under the Age of 18 (May 2014 – May 2015)

Region XIV



May-14	Jun-14	Jul-14	Aug-14	Sep-14	Oct-14	Nov-14	Dec-14	Jan-15	Feb-15	Mar-15	Apr-15	May-15
1,261	1,256	1,239	1,283	1,288	1,318	1,294	1,302	1,332	1,350	1,415	1,424	1,455



Division of Family and Children Services