



Georgia Division of Family and Children Services

Director

Bobby D. Cagle

Outcome Measures & Results May 2015

(Reflects Safety Outcomes as of March 31, 2015
And Permanency Outcomes as of April 30, 2015)



Definitions and Data Sources

SAFETY: Children are first and foremost, protected from abuse and neglect.

Outcome I: Child Protective Services Cases

Count of unique CPS Investigations and Family Preservation (Ongoing) stages open at any point during the month. Includes all cases active at some time during the month. Outcome is calculated 45 days prior to the date of report.

Outcome IA: Investigations Only: Count of unique Investigation stages open at any point during the month.

Outcome IB: Family Preservations Only: Count of unique Family Preservation stages open at any point during the month.

Sources: SHINES

Outcome II: Recurrence of Substantiated Child Maltreatment

Of all the children who were victims of substantiated maltreatment in the first 6 months of the year, the percentage that had substantiated maltreatment within the following 6 months. Outcome is calculated 45 days prior to the date of report. Each month is calculated as a rolling calendar year. *National Standard: less than or equal to 5.40%*

Source: SHINES

Outcome III: Disposition of Child Abuse and Neglect Reports

Chart reflects the disposition of reports received in a particular month. Data includes count of Family Support, Substantiated Investigations, Unsubstantiated Investigations and Screen-outs. Outcome is calculated 45 days prior to the date of report.

Source: SHINES

Outcome IV: Disposition of Child Abuse and Neglect Reports

Chart reflects the disposition of reports received in a particular month. Data includes count of Family Preservation (Substantiated and Unsubstantiated Open), Foster Care (Substantiated and Unsubstantiated Open), Substantiated and Unsubstantiated Closed. Outcome is calculated 45 days prior to the date of report.

Source: SHINES



Definitions and Data Sources

PERMANENCY: Children have permanency and stability in their living situations.

Outcome V: Children in the Legal Custody of DFCS Under the Age of 18

Count of unique children who were in the legal custody of DFCS (17 years of age and under) at some point during the month, and those 18 years of age and older (Extended Youth Services). Excludes Aftercare, ICPC, Placement services to parents, and Boarding County.

Source: SHINES

Outcome VI: Comparison of Foster Care Entries & Exits

Number of children who have entered foster care and number of children who have exited foster care during the month. Total children at end of month show the number of children on the last day of the month.

Source: SHINES

Outcome VII Foster Care Re-entries

Of all the children who entered foster care, the percentage that were discharged from a prior episode of foster care within 12 months of the current foster care placement. National Standard: less than or equal to 8.60%.

Source: SHINES

Outcome VIII: Foster Care Length of Stay

Percentage of children by number of months in foster care during each month.

Source: SHINES

Outcome IX: Length of Time to Achieve Reunification

Percentage of children who exited care during the month through reunification with their family that reunified in less than 12 months from the date of their removal. National Standard: greater than or equal to 76.20%

Source: SHINES



Definitions and Data Sources

PERMANENCY cont'd: Children have permanency and stability in their living situations.

Outcome X: Children Placed with Relatives

Of all children in DFCS custody, the percentage that are placed with a relative or a relative foster home.

State Target: greater than or equal to 30.00%

Source: SHINES

Outcome XI: Extended Youth Services

Number of children ages 18 – 21 who remained in the custody of DFCS beyond their birth month.

Source: SHINES

Outcome XII: Adoptions Finalized

The number of children whose adoption was finalized within each month..

Source: SHINES

Outcome XIII: Stability Performance Coefficient (Number of Moves/Number of Days in Custody * 1000)

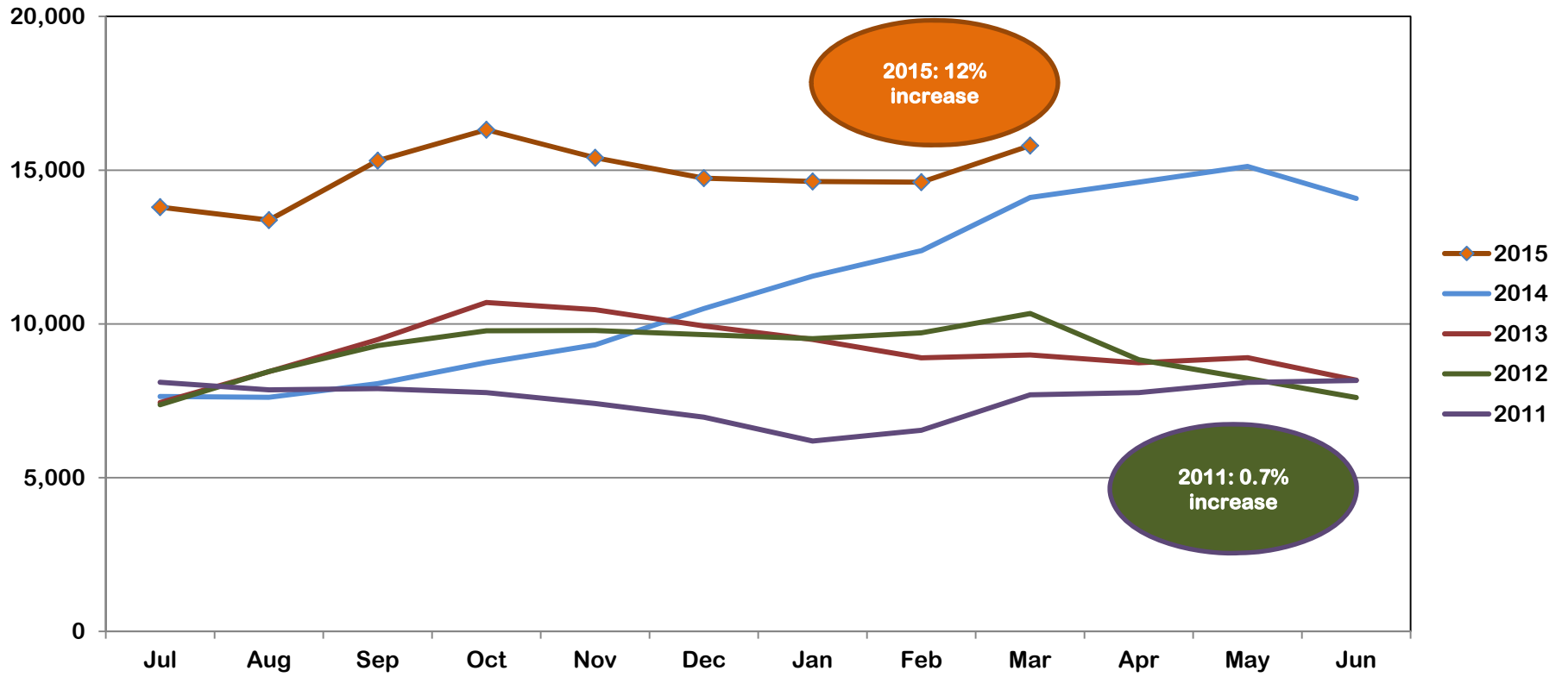
A calculated value based upon the ACF CFSR Round 3 which is part of Program Improvement. It is calculated from a rolling 12 month population of the entry cohort where the child remained in custody for over 8 days and was not 18 on the date of removal. The ACF Target is: 4.26 to avoid PIP.

Source: SHINES

***Note: Data may vary from month to month due to 13 month data trends being re-run over the time span for the various outcomes in this report.*



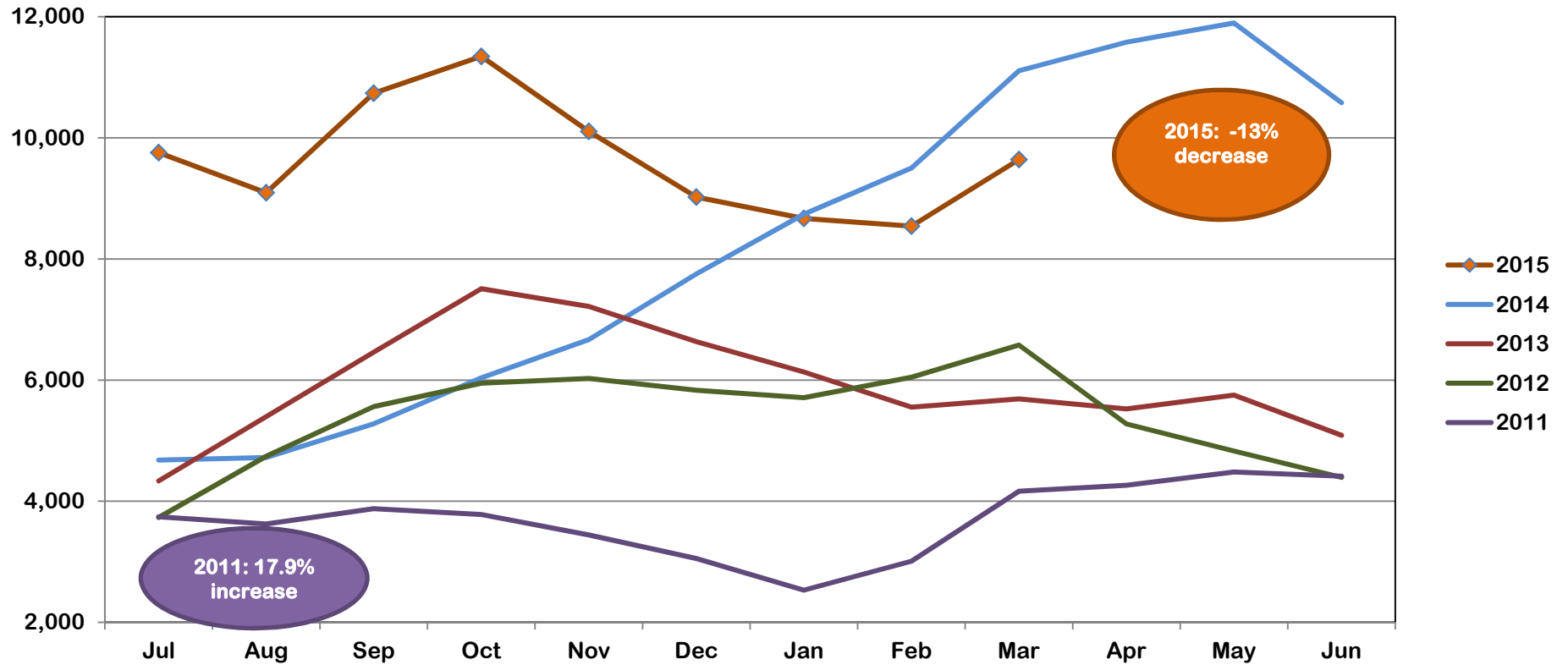
Outcome I: Child Protective Services Cases (March 2015)



State FY	Jul	Aug	Sep	Oct	Nov	Dec	Jan	Feb	Mar	Apr	May	Jun	% Increase
2015	13,797	13,376	15,309	16,316	15,404	14,738	14,634	14,610	15,800				12.0%
2014	7,642	7,612	8,059	8,746	9,320	10,499	11,552	12,378	14,110	14,609	15,120	14,079	72.3%
2013	7,441	8,449	9,489	10,696	10,462	9,934	9,492	8,895	8,991	8,733	8,902	8,169	7.4%
2012	7,373	8,451	9,291	9,776	9,786	9,650	9,521	9,707	10,338	8,836	8,228	7,606	-6.8%
2011	8,103	7,855	7,895	7,765	7,410	6,969	6,189	6,542	7,696	7,768	8,098	8,163	-9.9%



Outcome IA: Child Protective Services Cases Investigations Only (March 2015)

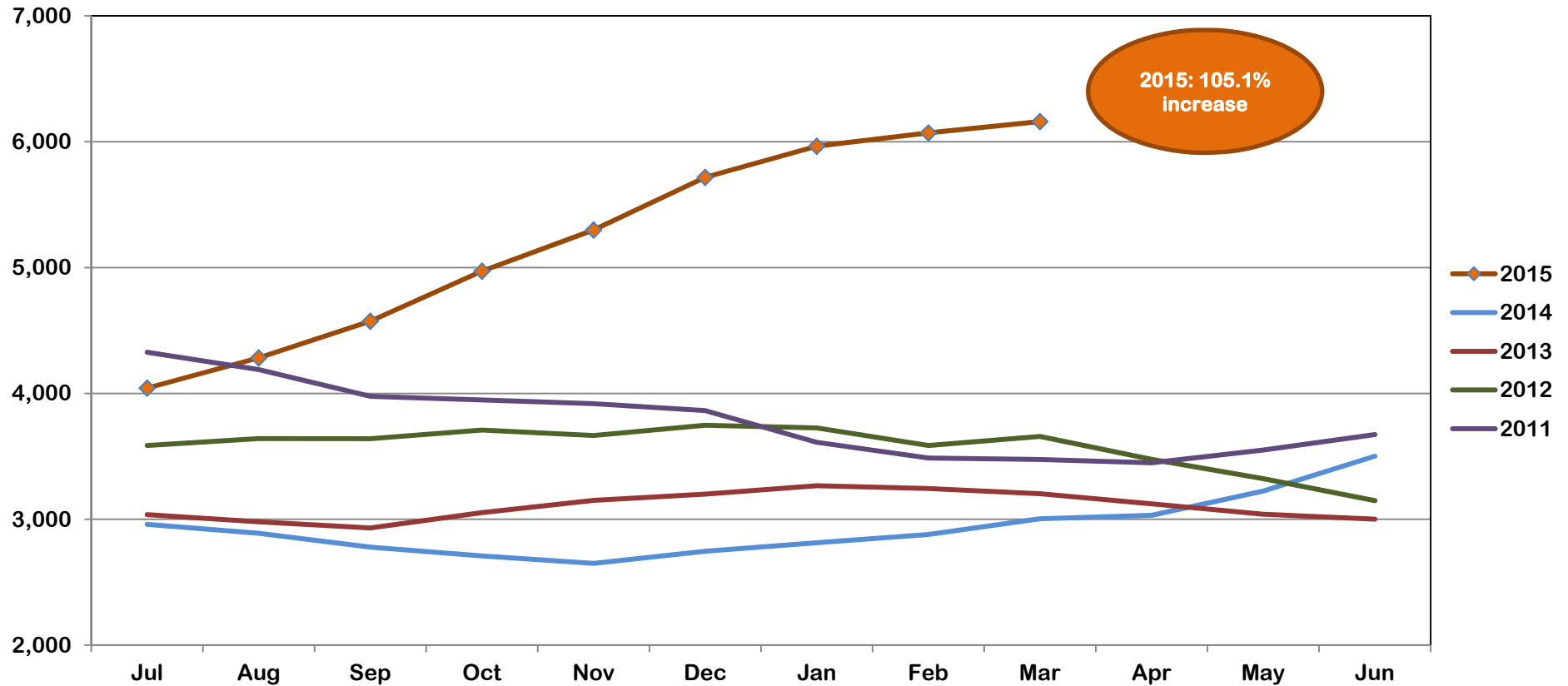


State FY	Jul	Aug	Sep	Oct	Nov	Dec	Jan	Feb	Mar	Apr	May	Jun	% Increase
2015	9,755	9,093	10,735	11,344	10,105	9,021	8,669	8,540	9,640				-13.2%
2014	4,680	4,721	5,278	6,035	6,669	7,751	8,738	9,499	11,106	11,578	11,896	10,578	51.9%
2013	4,336	5,396	6,460	7,509	7,216	6,635	6,133	5,552	5,689	5,525	5,753	5,089	15.8%
2012	3,732	4,742	5,563	5,949	6,027	5,832	5,709	6,047	6,579	5,276	4,829	4,394	0.5%
2011	3,744	3,624	3,878	3,780	3,443	3,055	2,531	3,010	4,165	4,264	4,483	4,414	-1.4%



Division of Family and Children Services

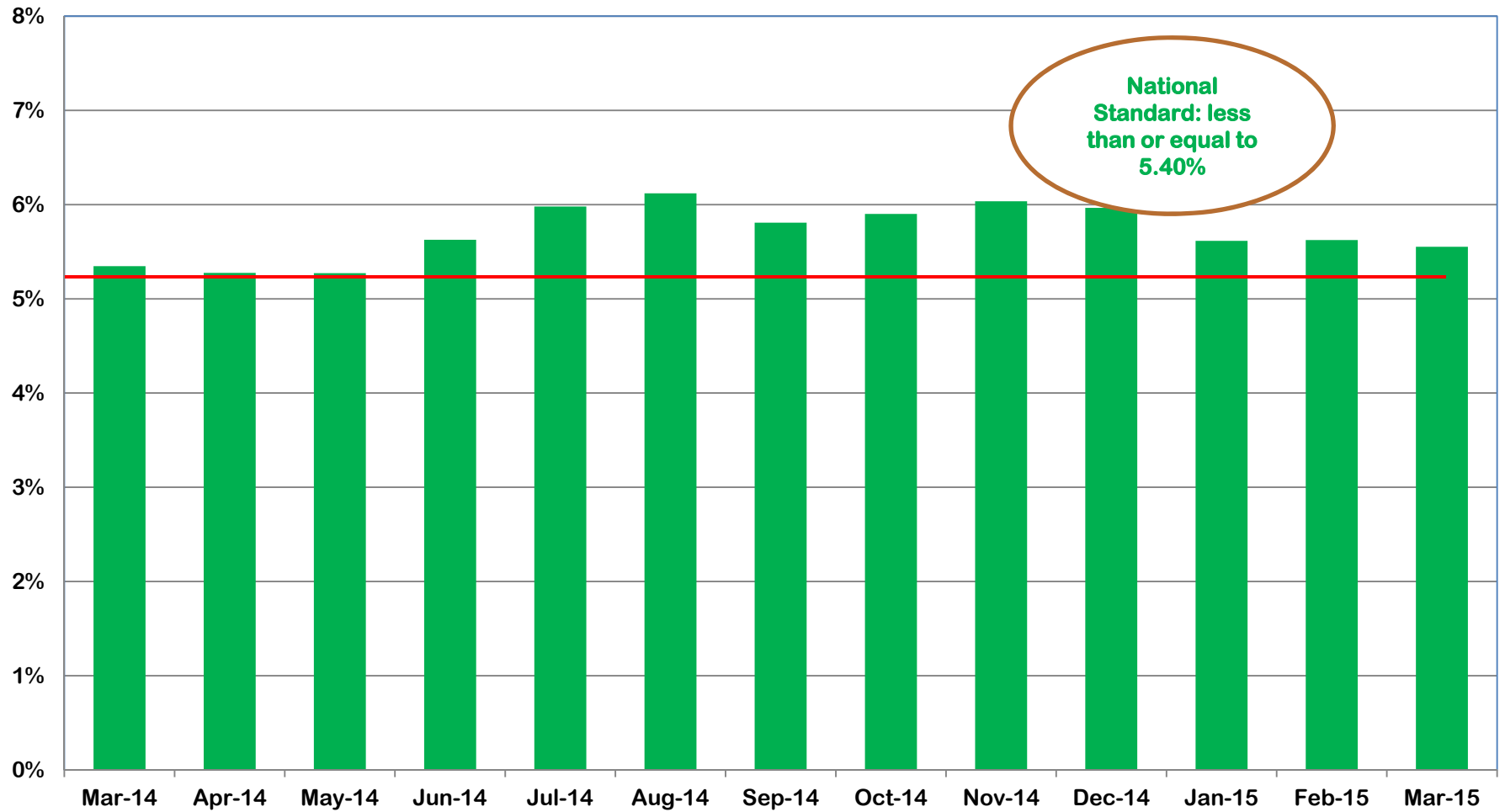
Outcome IB: Child Protective Services Cases Family Preservation Cases Only (March 2015)



State FY	Jul	Aug	Sep	Oct	Nov	Dec	Jan	Feb	Mar	Apr	May	Jun	% Increase
2015	4,042	4,283	4,574	4,972	5,299	5,717	5,965	6,070	6,160				105.1%
2014	2,960	2,889	2,779	2,709	2,649	2,746	2,813	2,879	3,004	3,031	3,224	3,501	16.7%
2013	3,037	2,980	2,931	3,053	3,150	3,200	3,266	3,244	3,203	3,122	3,040	3,001	-4.7%
2012	3,586	3,641	3,640	3,709	3,665	3,747	3,726	3,586	3,658	3,476	3,323	3,148	-14.3%
2011	4,327	4,190	3,977	3,948	3,918	3,864	3,612	3,487	3,475	3,449	3,550	3,673	-19.9%



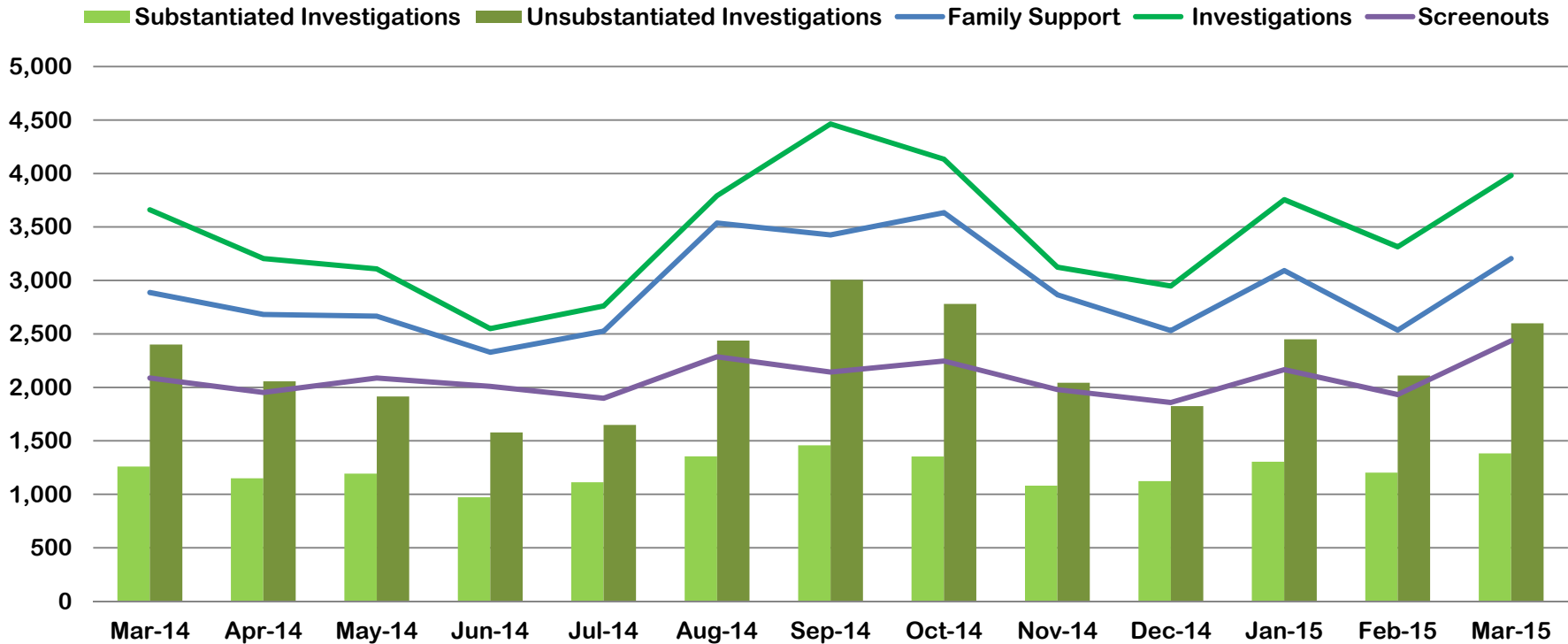
Outcome II: Recurrence of Substantiated Child Maltreatment (March 2014 – March 2015)



Mar-14	Apr-14	May-14	Jun-14	Jul-14	Aug-14	Sep-14	Oct-14	Nov-14	Dec-14	Jan-15	Feb-15	Mar-15
5.35%	5.28%	5.27%	5.63%	5.98%	6.12%	5.81%	5.90%	6.04%	5.97%	5.62%	5.62%	5.55%



Outcome III: Disposition of Child Abuse and Neglect Reports (March 2014 - March 2015)

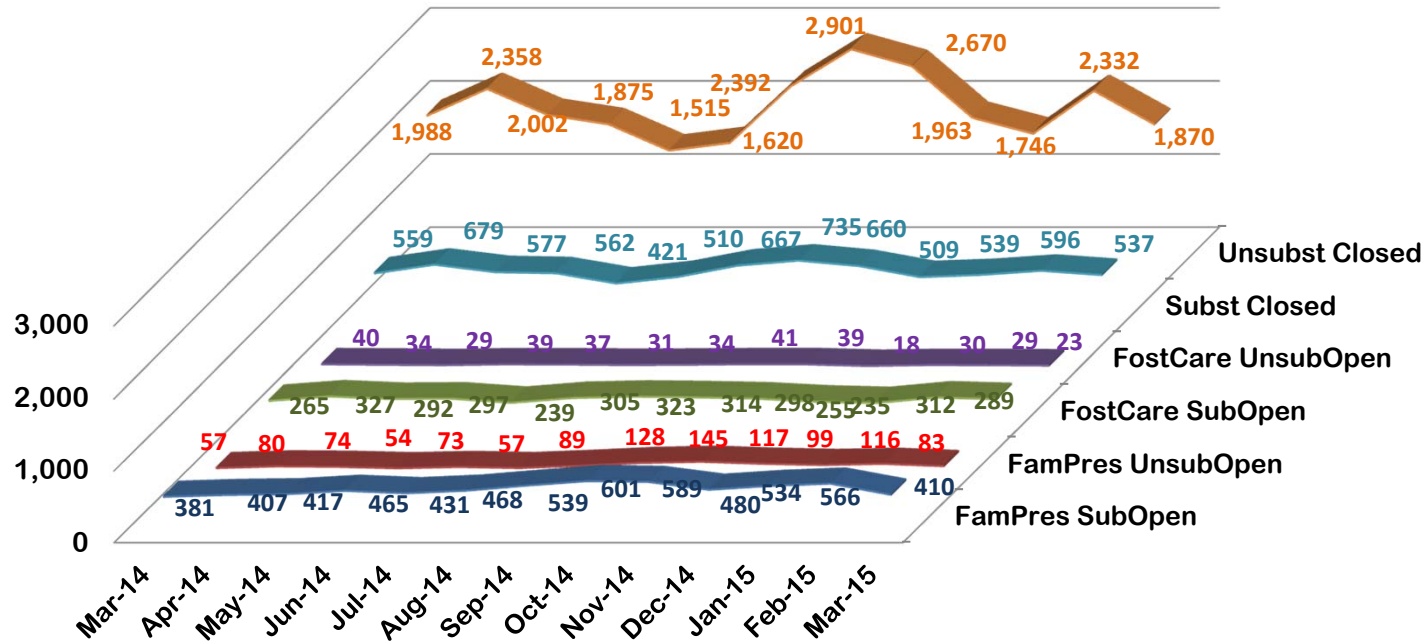


	Mar-14	Apr-14	May-14	Jun-14	Jul-14	Aug-14	Sep-14	Oct-14	Nov-14	Dec-14	Jan-15	Feb-15	Mar-15
Family Support	2,887	2,682	2,666	2,328	2,525	3,537	3,426	3,634	2,866	2,531	3,092	2,535	3,204
Screenouts	2,087	1,952	2,087	2,009	1,898	2,286	2,143	2,246	1,979	1,859	2,166	1,932	2,435
Investigations	3,660	3,205	3,108	2,550	2,761	3,793	4,463	4,134	3,124	2,948	3,755	3,314	3,982
Substantiated Investigations	1,260	1,149	1,193	972	1,112	1,355	1,458	1,353	1,081	1,123	1,305	1,203	1,383
Unsubstantiated Investigations	2,400	2,056	1,915	1,578	1,649	2,438	3,005	2,781	2,043	1,825	2,450	2,111	2,599



Division of Family and Children Services

Outcome IV: Subsequent Case-Type of Investigations by Disposition (March 2014 - March 2015)

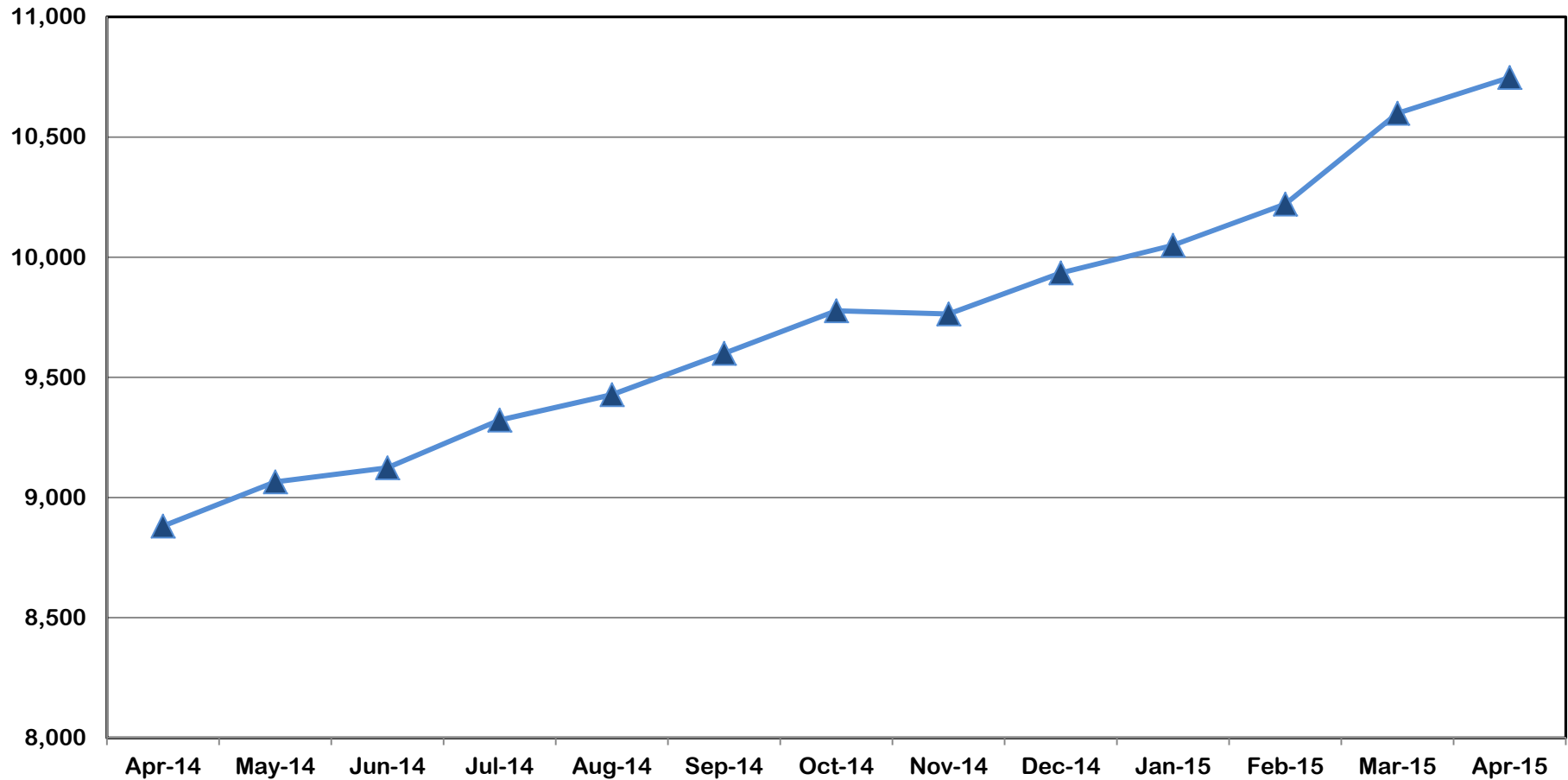


	Mar-14	Apr-14	May-14	Jun-14	Jul-14	Aug-14	Sep-14	Oct-14	Nov-14	Dec-14	Jan-15	Feb-15	Mar-15
FamPres SubOpen	381	407	417	465	431	468	539	601	589	480	534	566	410
FamPres UnsubOpen	57	80	74	54	73	57	89	128	145	117	99	116	83
FostCare SubOpen	265	327	292	297	239	305	323	314	298	255	235	312	289
FostCare UnsubOpen	40	34	29	39	37	31	34	41	39	18	30	29	23
Subst Closed	559	679	577	562	421	510	667	735	660	509	539	596	537
Unsubst Closed	1,988	2,358	2,002	1,875	1,515	1,620	2,392	2,901	2,670	1,963	1,746	2,332	1,870



Division of Family and Children Services

Outcome V: Children in DFCS Custody Under the Age of 18 (April 2014 – April 2015)

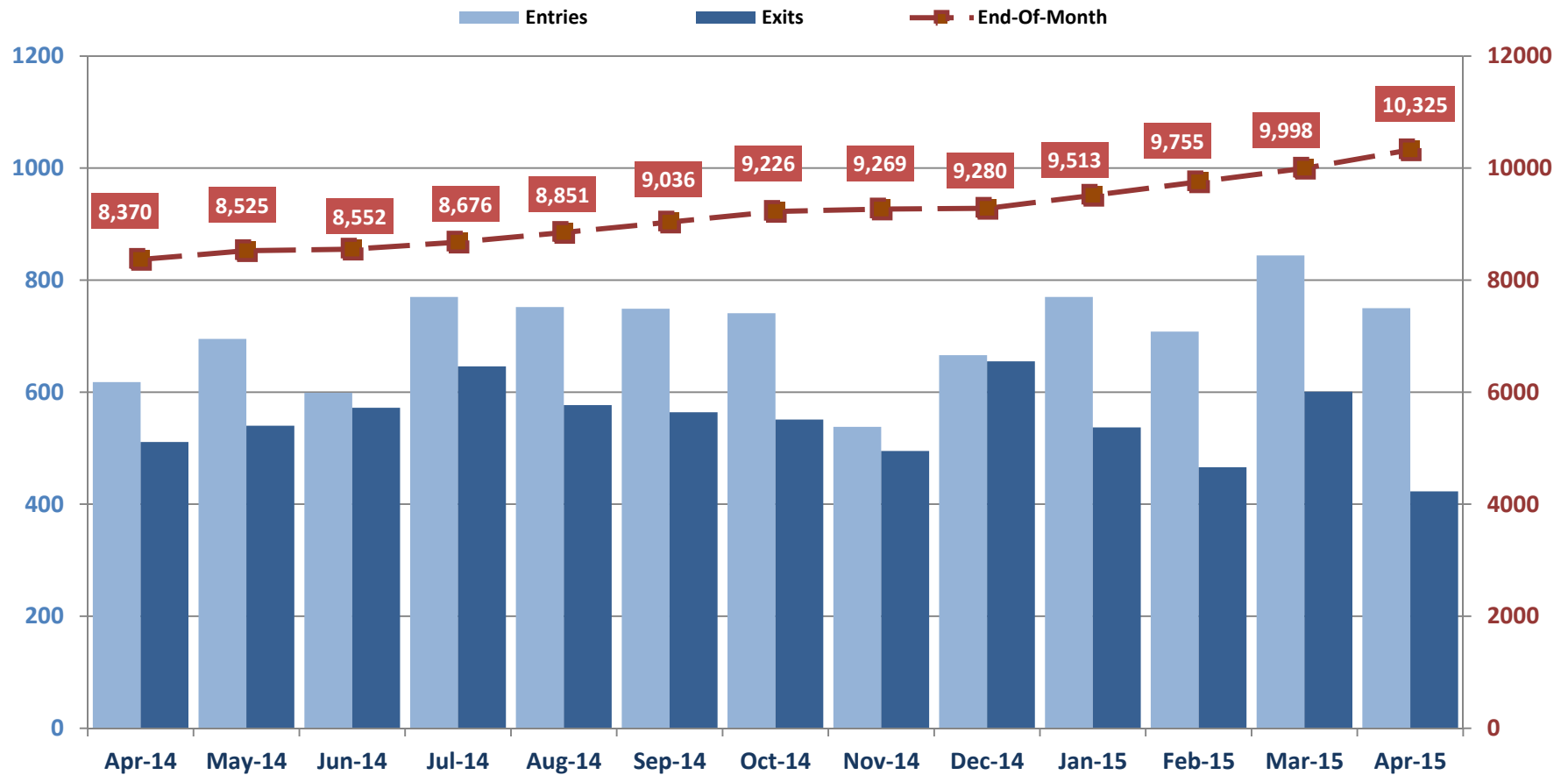


Apr-14	May-14	Jun-14	Jul-14	Aug-14	Sep-14	Oct-14	Nov-14	Dec-14	Jan-15	Feb-15	Mar-15	Apr-15
8,881	9,065	9,124	9,322	9,428	9,600	9,777	9,764	9,935	10,050	10,221	10,599	10,748



Division of Family and Children Services

Outcome VI: Comparison of Foster Care Entries and Exits (April 2014 – April 2015)

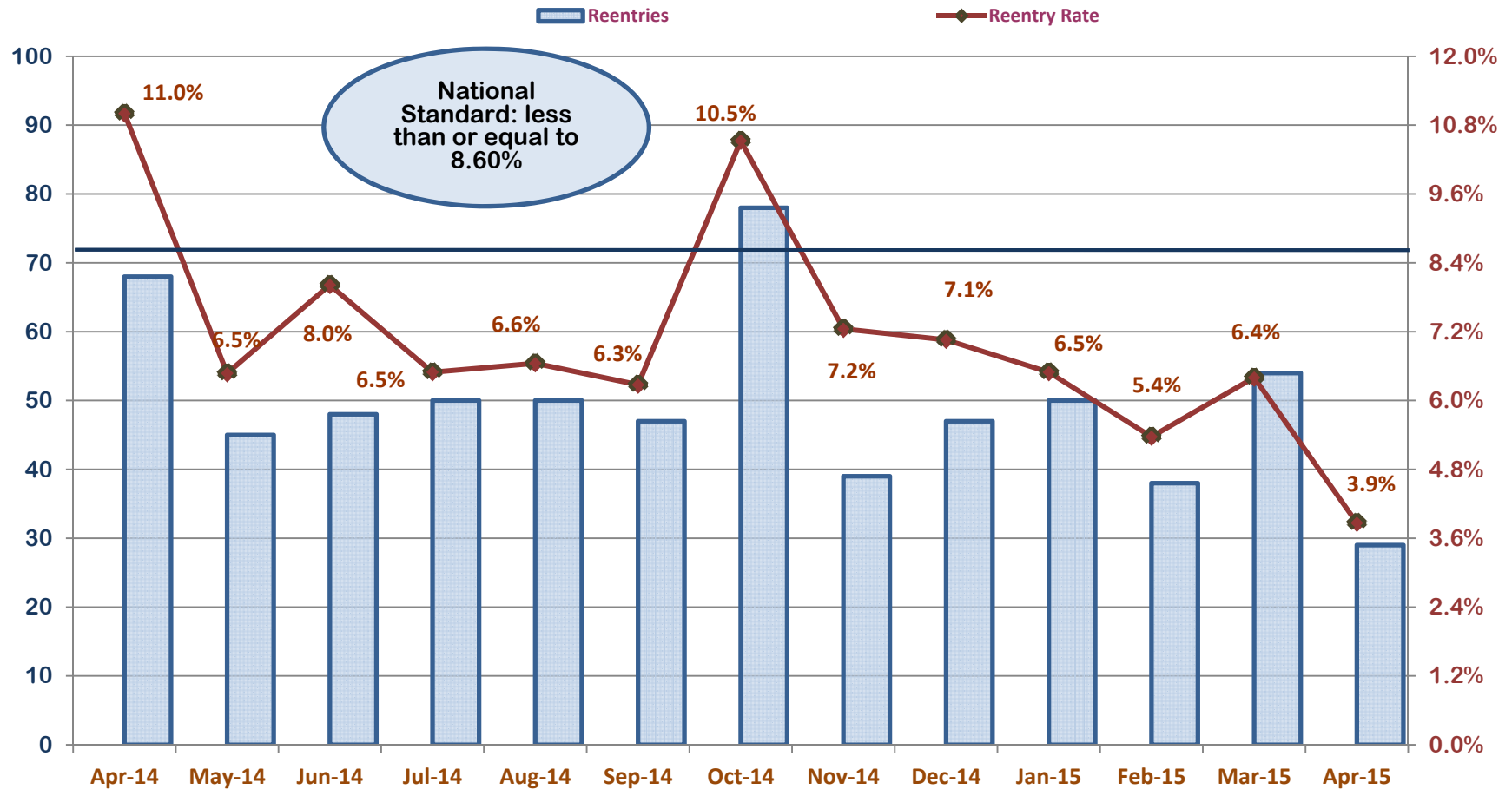


Apr-14	May-14	Jun-14	Jul-14	Aug-14	Sep-14	Oct-14	Nov-14	Dec-14	Jan-15	Feb-15	Mar-15	Apr-15
618	695	599	770	752	749	741	538	666	770	708	844	750
511	540	572	646	577	564	551	495	655	537	466	601	423



Division of Family and Children Services

Outcome VII: Foster Care Re-Entry Rate (April 2014 – April 2015)

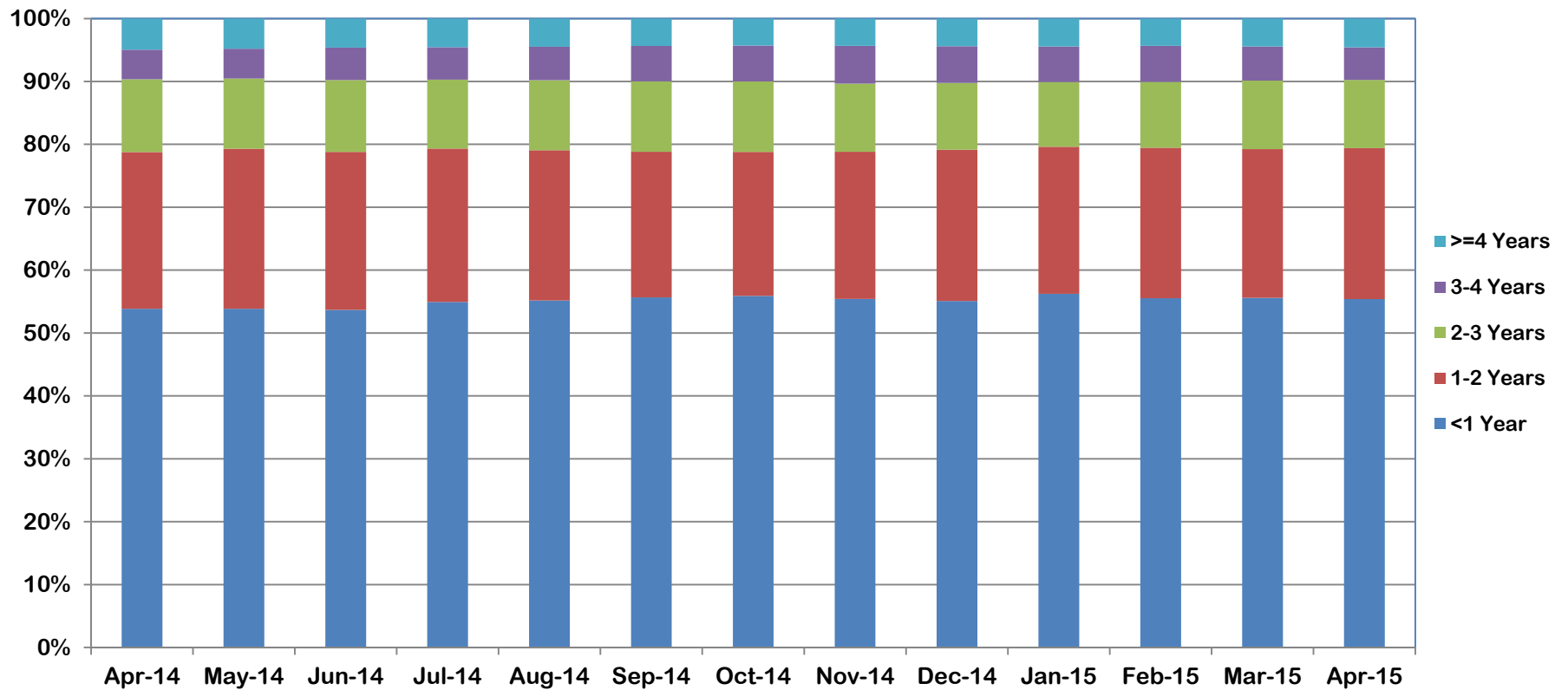


Apr-14	May-14	Jun-14	Jul-14	Aug-14	Sep-14	Oct-14	Nov-14	Dec-14	Jan-15	Feb-15	Mar-15	Apr-15
11.0%	6.5%	8.0%	6.5%	6.6%	6.3%	10.5%	7.2%	7.1%	6.5%	5.4%	6.4%	3.9%



Division of Family and Children Services

Outcome VIII: Foster Care Length of Stay (April 2014 – April 2015)

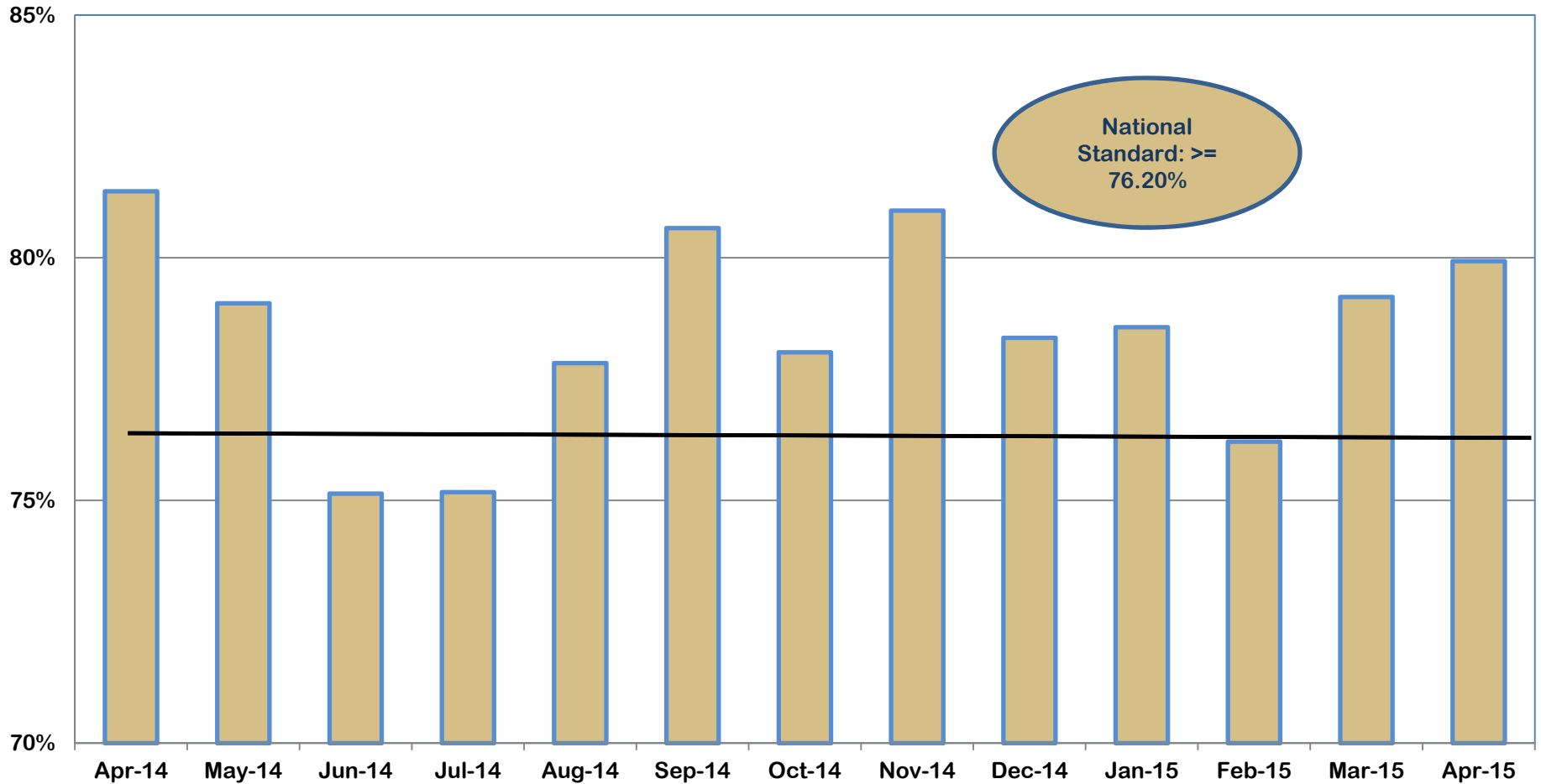


	Apr-14	May-14	Jun-14	Jul-14	Aug-14	Sep-14	Oct-14	Nov-14	Dec-14	Jan-15	Feb-15	Mar-15	Apr-15
<1 Year	53.8%	53.9%	53.7%	54.9%	55.2%	55.7%	55.9%	55.4%	55.1%	56.2%	55.5%	55.6%	55.4%
1-2 Years	24.9%	25.4%	25.1%	24.4%	23.9%	23.1%	22.9%	23.4%	24.1%	23.4%	23.9%	23.6%	24.0%
2-3 Years	11.6%	11.6%	11.2%	11.4%	11.0%	11.1%	11.2%	11.2%	10.8%	10.6%	10.3%	10.5%	10.9%
3-4 Years	4.7%	4.7%	5.2%	5.2%	5.3%	5.6%	5.7%	6.0%	5.8%	5.6%	5.7%	5.4%	5.2%
>=4 Years	4.9%	4.8%	4.6%	4.5%	4.5%	4.4%	4.3%	4.3%	4.4%	4.4%	4.3%	4.4%	4.6%



Division of Family and Children Services

Outcome IX: Length of Time to Reunification (April 2014 – April 2015)

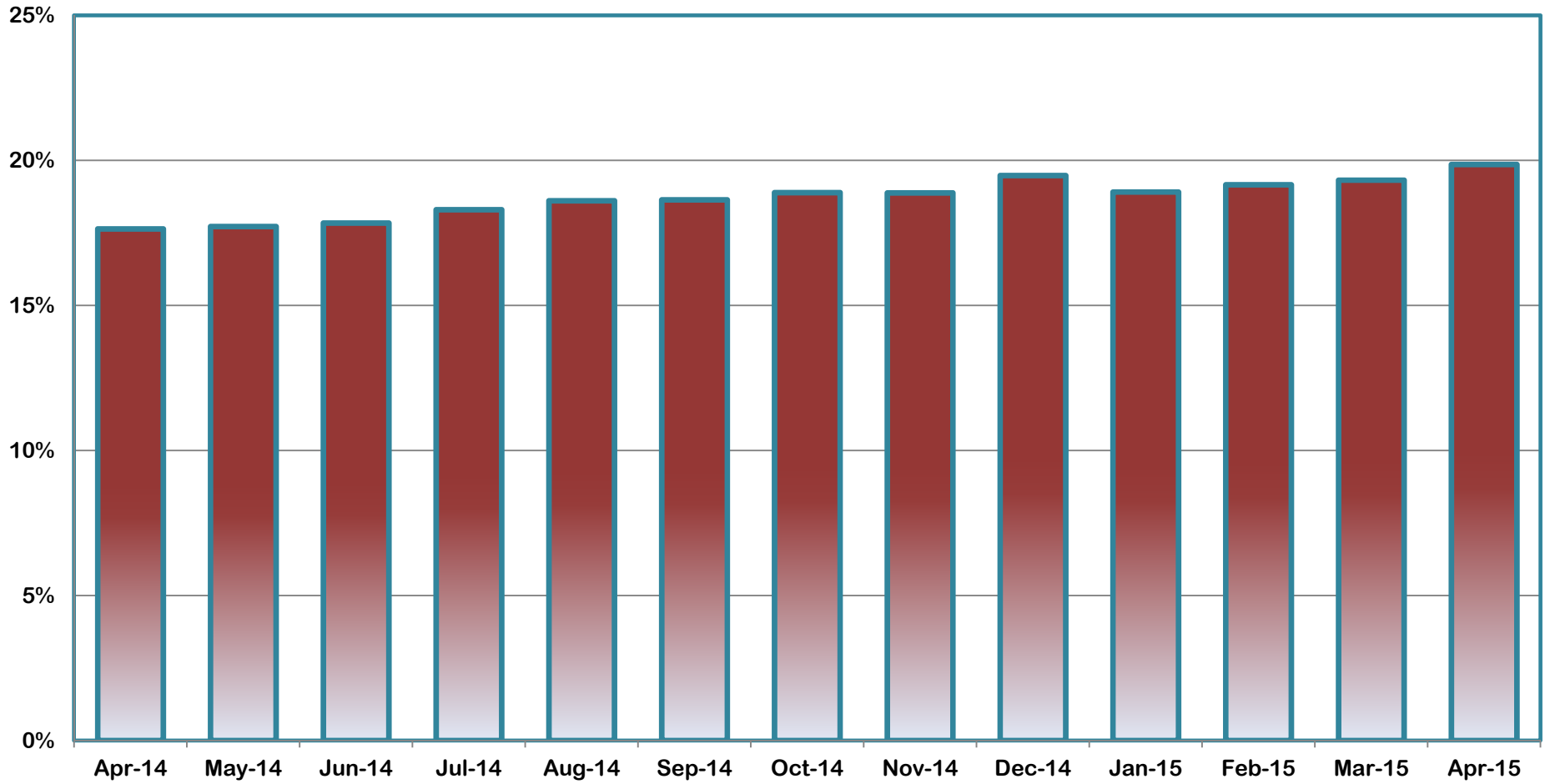


Apr-14	May-14	Jun-14	Jul-14	Aug-14	Sep-14	Oct-14	Nov-14	Dec-14	Jan-15	Feb-15	Mar-15	Apr-15
81.4%	79.1%	75.1%	75.2%	77.8%	80.6%	78.1%	81.0%	78.4%	78.6%	76.2%	79.2%	79.9%



Division of Family and Children Services

Outcome X: Percent of Children Placed with Relatives (April 2014 – April 2015)

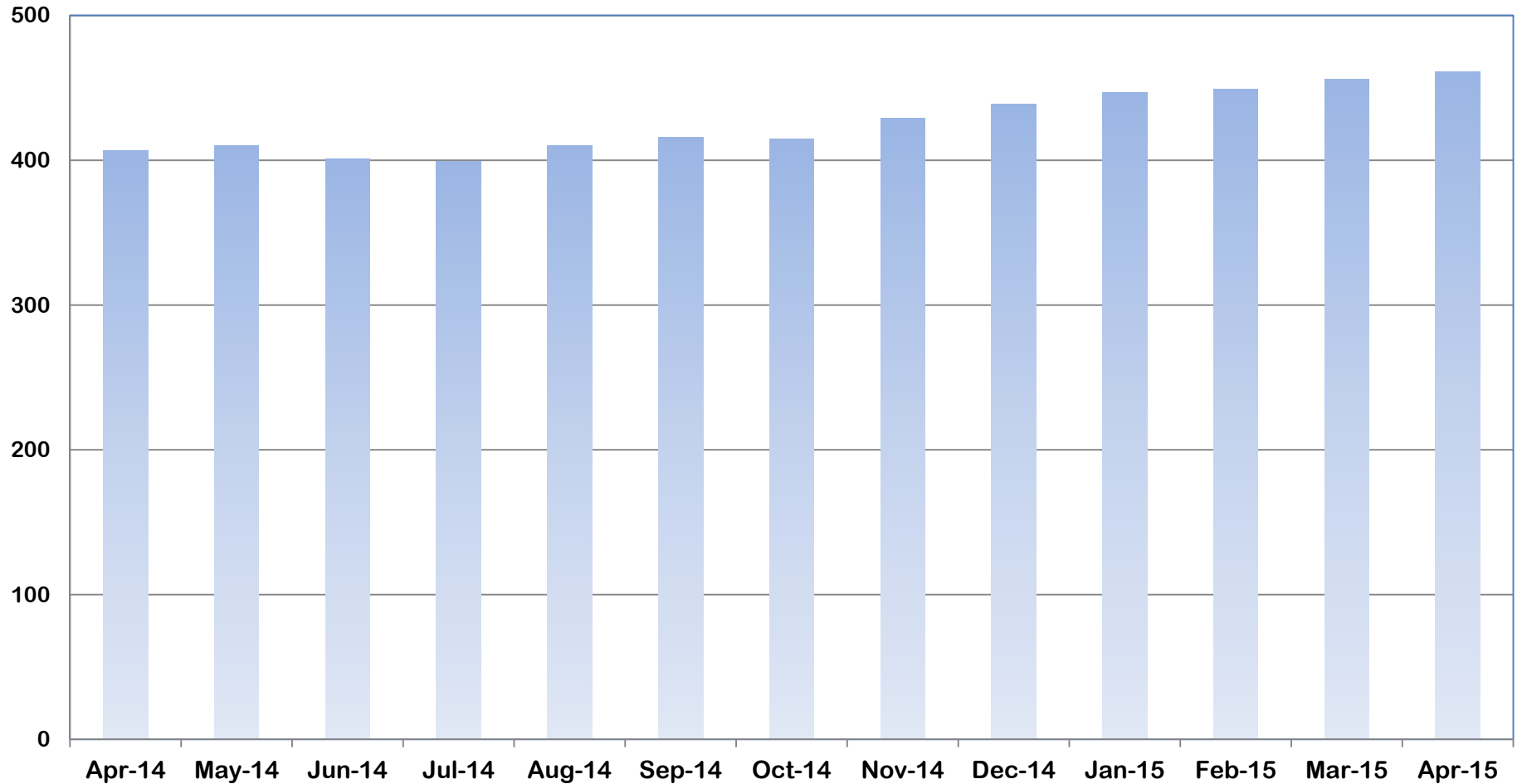


Apr-14	May-14	Jun-14	Jul-14	Aug-14	Sep-14	Oct-14	Nov-14	Dec-14	Jan-15	Feb-15	Mar-15	Apr-15
17.6%	17.7%	17.8%	18.3%	18.6%	18.6%	18.9%	18.9%	19.5%	18.9%	19.2%	19.3%	19.9%



Division of Family and Children Services

Outcome XI: Extended Youth Services (April 2014 – April 2015)

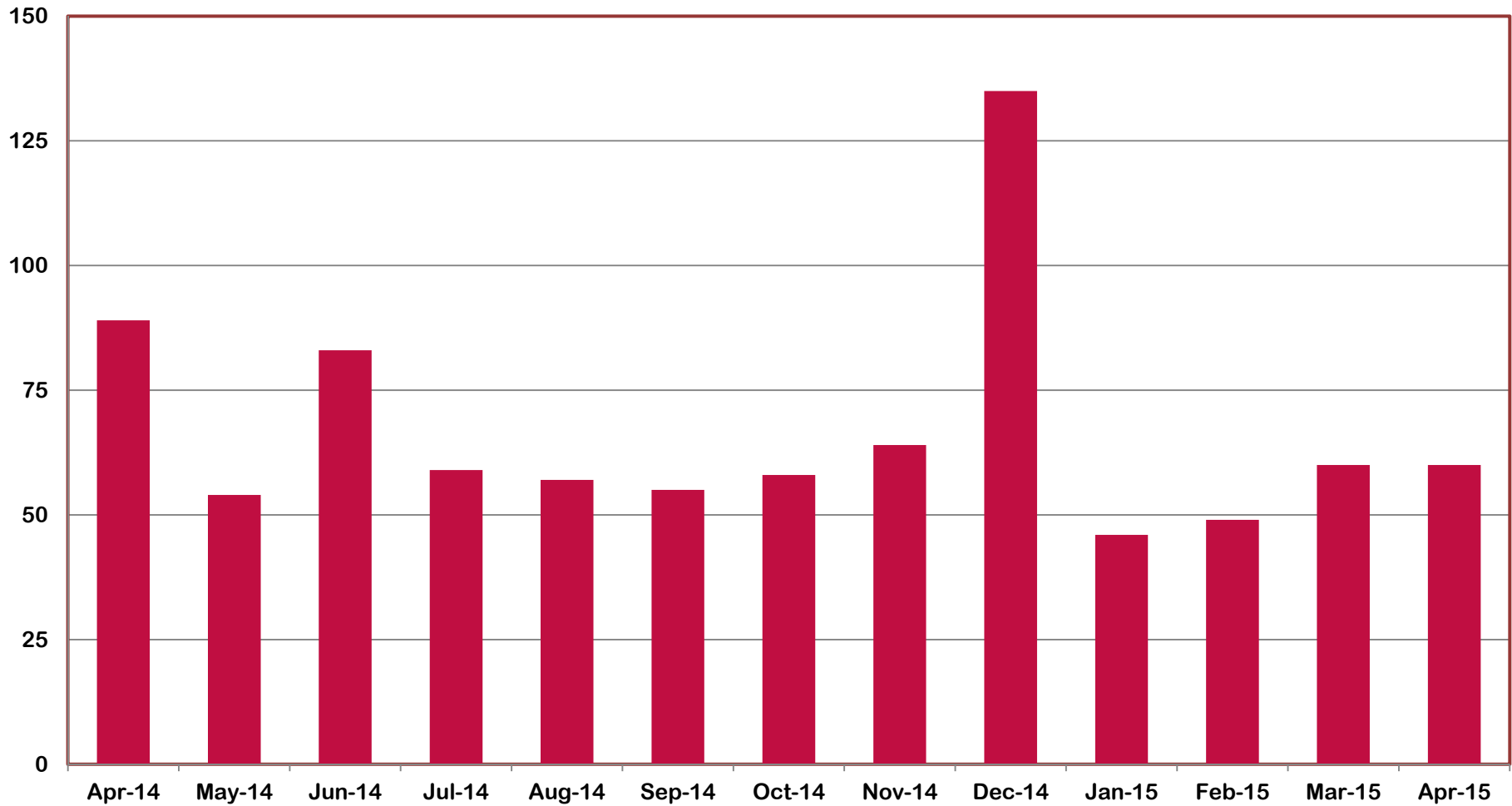


Apr-14	May-14	Jun-14	Jul-14	Aug-14	Sep-14	Oct-14	Nov-14	Dec-14	Jan-15	Feb-15	Mar-15	Apr-15
407	410	401	399	410	416	415	429	439	447	449	456	461



Division of Family and Children Services

Outcome XII: Number of Finalized Adoptions (April 2014 – April 2015)

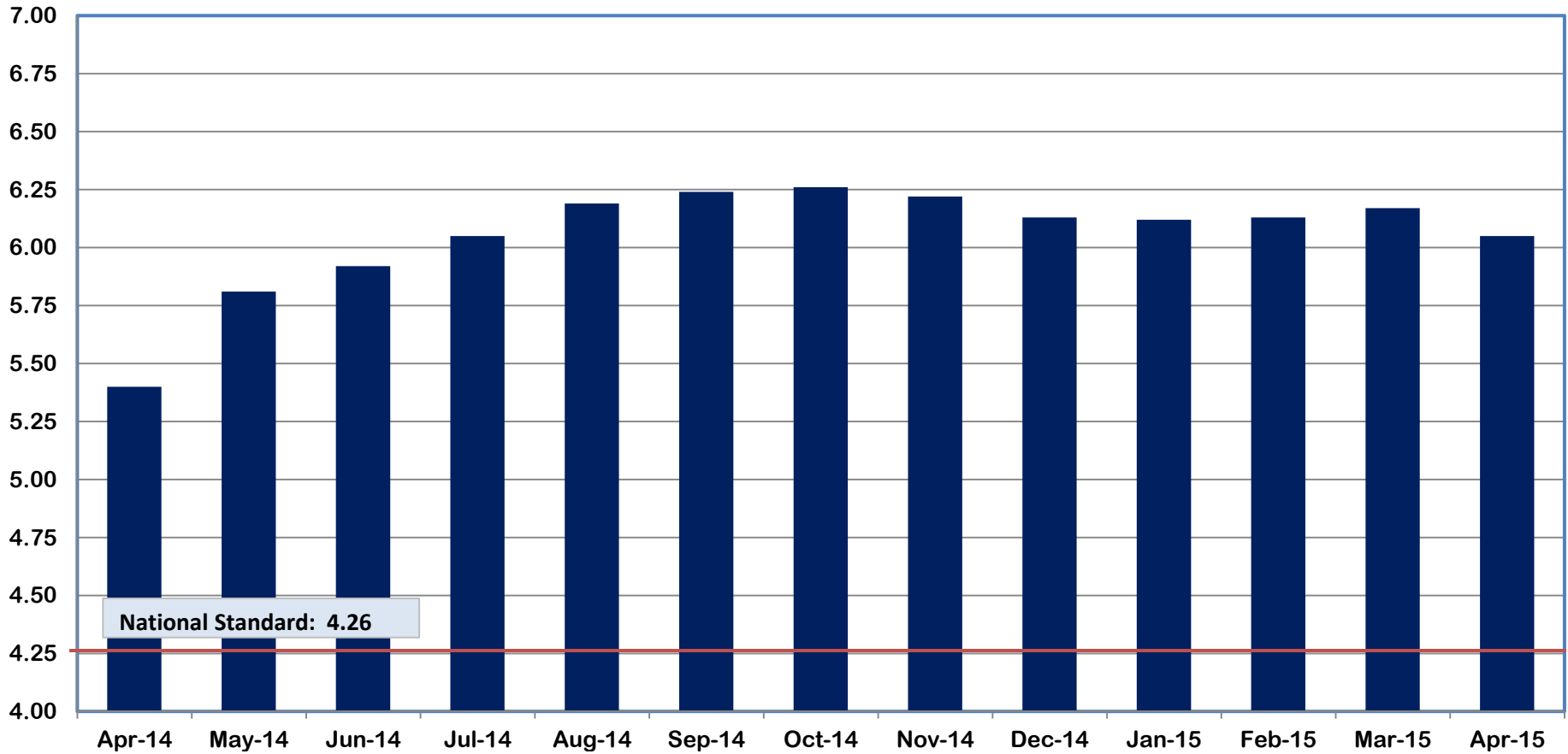


Apr-14	May-14	Jun-14	Jul-14	Aug-14	Sep-14	Oct-14	Nov-14	Dec-14	Jan-15	Feb-15	Mar-15	Apr-15
89	54	83	59	57	55	58	64	135	46	49	60	60



Division of Family and Children Services

Outcome XIII: Placement Stability Performance Coefficient (April 2014 - April 2015)



Apr-14	May-14	Jun-14	Jul-14	Aug-14	Sep-14	Oct-14	Nov-14	Dec-14	Jan-15	Feb-15	Mar-15	Apr-15
5.40	5.81	5.92	6.05	6.19	6.24	6.26	6.22	6.13	6.12	6.13	6.17	6.05



Division of Family and Children Services