



Data Analysis, Accountability,  
Research & Evaluation

# Family Independence

## Outcome Measures & Results

September 2010



## Definitions and Data Sources

Pages

### TANF Cases (Total/Adult/Child Only)

1 - 2

Includes all cases active at some time during the month

Source: Success

### Food Stamp Cases

3

Includes all cases active at some time during the month

Source: SUCCESS DMD6929I

### Medicaid Cases

3

Includes case active at the end of the month

Source: SUCCESS DMF8031I

### TANF Work Participation Rate

4

Of all the families with a Temporary Assistance to Needy Families (TANF) work requirement, the percentage of families that met the work requirement. **State Target: greater than or equal to 70%**

### Food Stamp Participation Rate

4

The ratio of number of food stamp persons over the estimated persons at or below 125% of the poverty level. **State Target: greater than or equal to 59.65%**

Source: SUCCESS DMD6929I, US Census Bureau

### Medicaid (ABD) Standard of Promptness

5

Of all the Aged, Blind, Disabled Medicaid applications for benefits, the percentage that was completed within the mandated Standard of Promptness (SOP). **State Target: greater than or equal to 96.0%**

Source: SUCCESS DMF8001I, DMF8007I, DMF8031I, DMF8032I, DMF8061I

### Medicaid (Family) Standard of Promptness

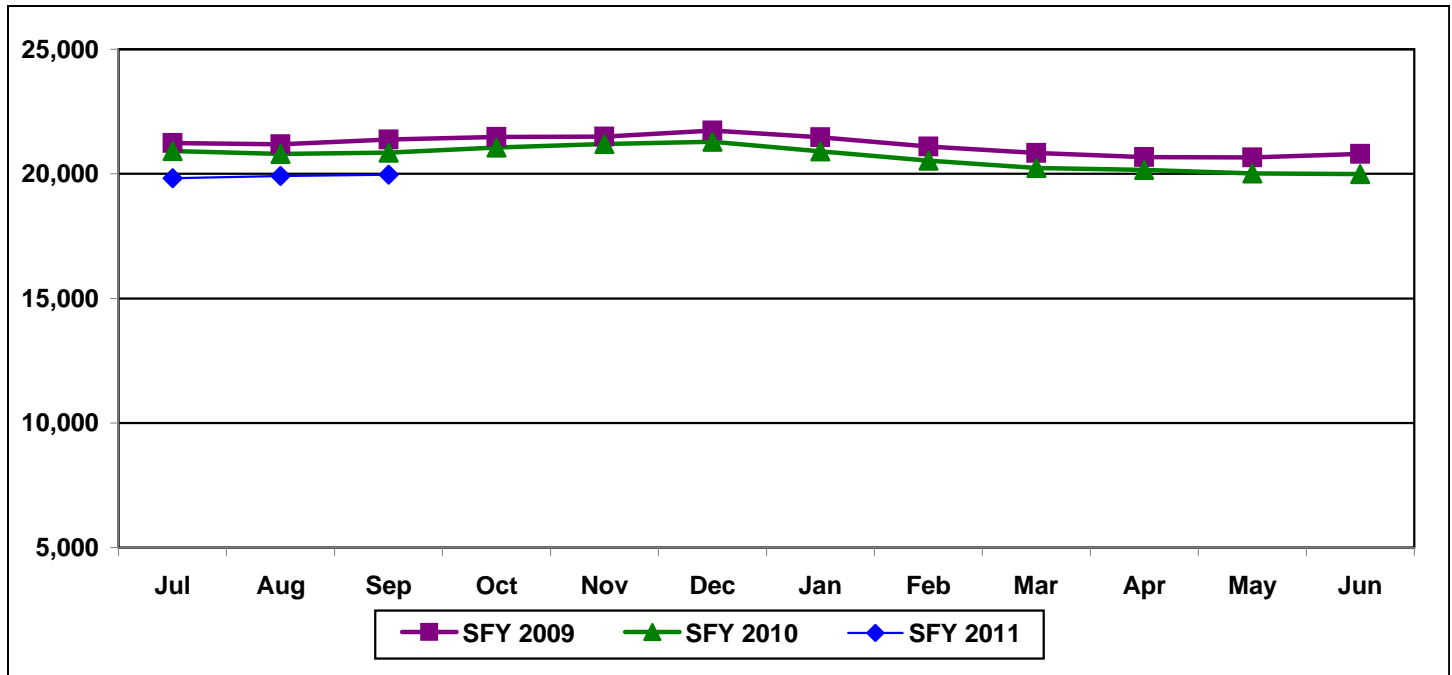
5

Of all the Family Medicaid applications for benefits, the percentage that was completed within the mandated Standard of Promptness (SOP). **State Target: greater than or equal to 96.0%**

Source: SUCCESS DMF8001I, DMF8007I, DMF8031I, DMF8032I, DMF8061I

## TANF Cases

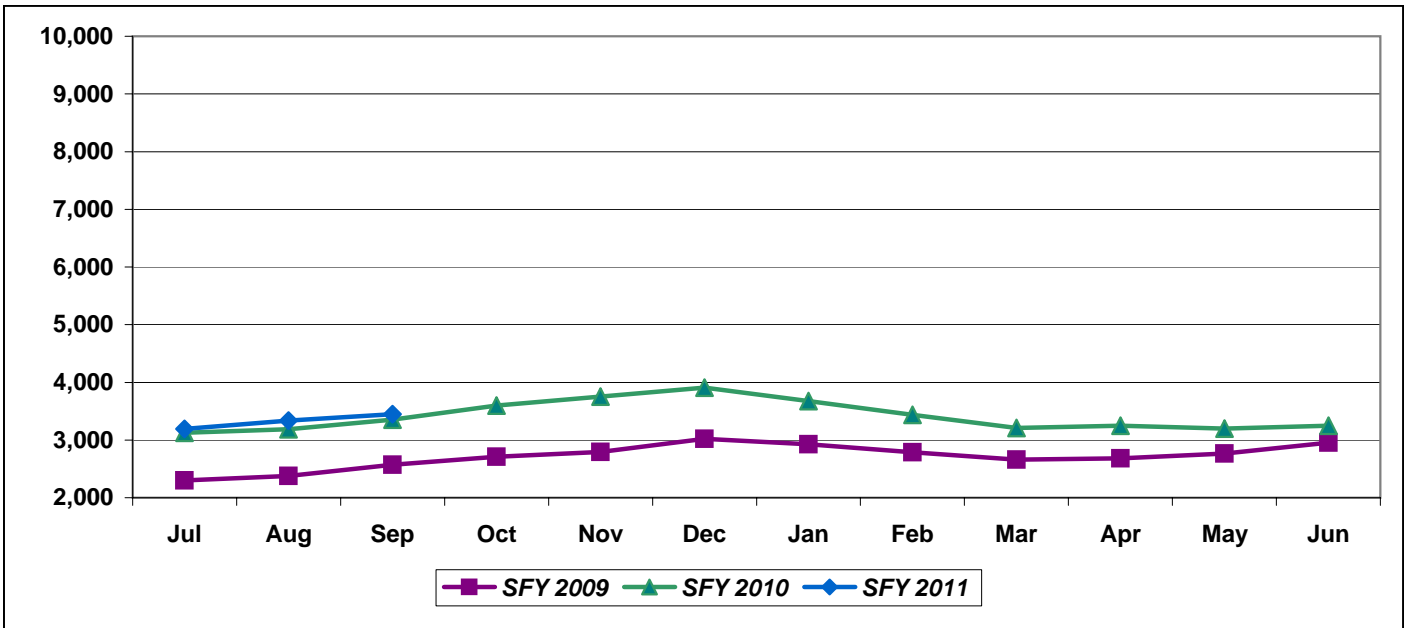
Def: Includes all cases active at some time during the month



Jul	Aug	Sep	Oct	Nov	Dec	Jan	Feb	Mar	Apr	May	Jun
21,231	21,189	21,378	21,478	21,494	21,743	21,467	21,098	20,837	20,671	20,656	20,803
20,911	20,798	20,857	21,057	21,198	21,289	20,905	20,536	20,233	20,152	20,018	19,988
19,822	19,909	19,969									

## TANF Cases - Adult

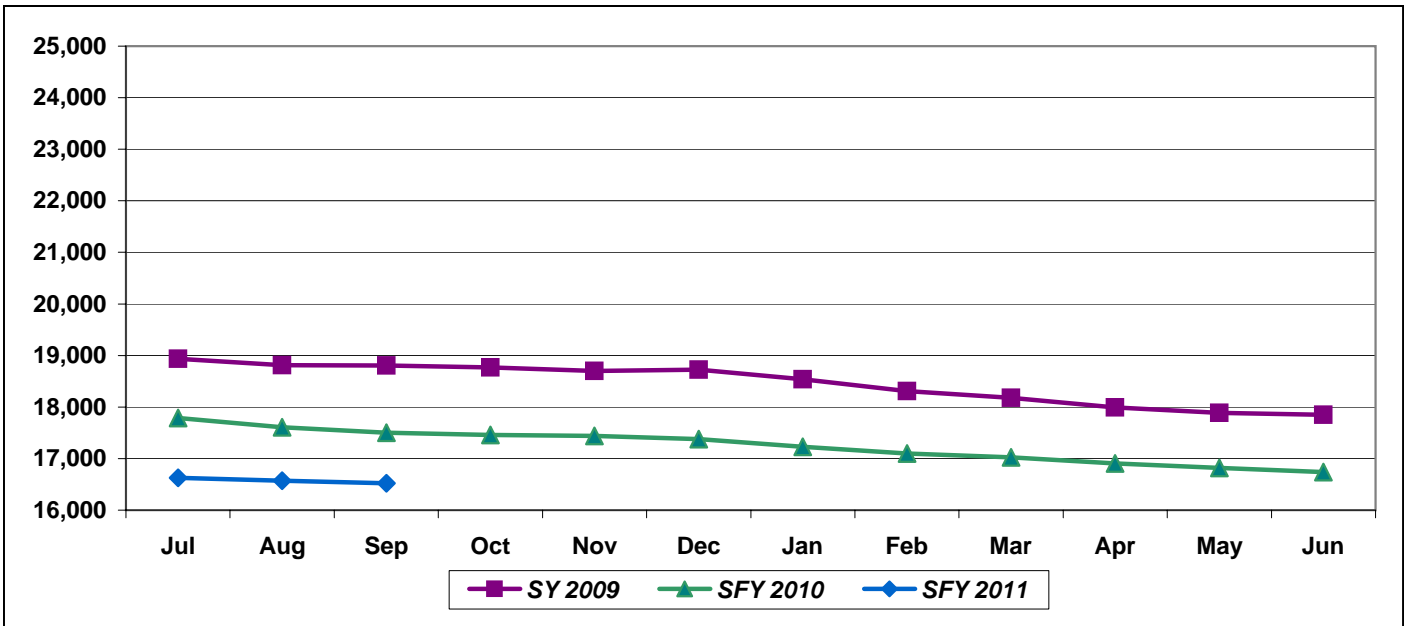
Def: Adult is defined as a work eligible individual. Includes all cases active at some time during the month.



Jul	Aug	Sep	Oct	Nov	Dec	Jan	Feb	Mar	Apr	May	Jun
2,297	2,378	2,571	2,709	2,795	3,019	2,928	2,788	2,660	2,681	2,766	2,952
3,126	3,188	3,352	3,596	3,755	3,909	3,673	3,437	3,210	3,246	3,198	3,250
3,194	3,336	3,446									

## TANF Cases - Child Only

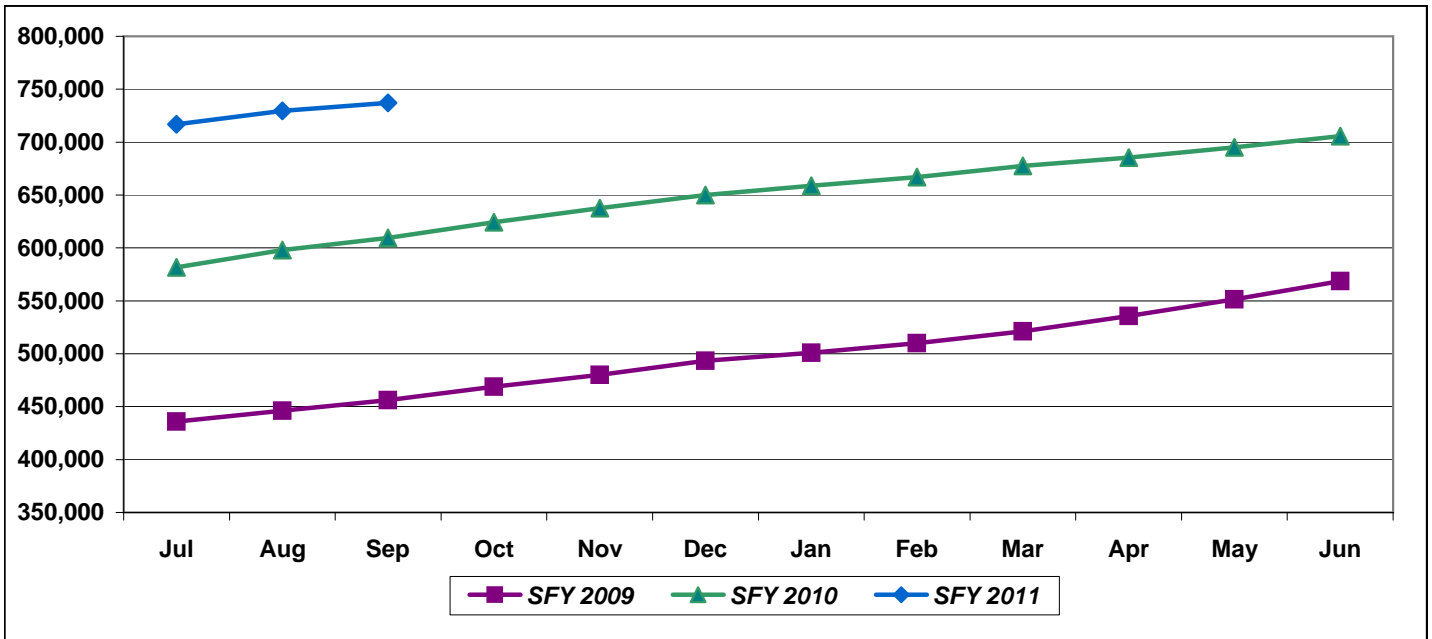
Def: There is no work eligible adult in the case. Includes all cases active at some time during the month.



Jul	Aug	Sep	Oct	Nov	Dec	Jan	Feb	Mar	Apr	May	Jun
18,934	18,811	18,807	18,769	18,699	18,724	18,539	18,310	18,177	17,990	17,890	17,851
17,785	17,610	17,505	17,461	17,443	17,380	17,232	17,099	17,023	16,906	16,820	16,738
16,628	16,573	16,523									

## Food Stamp Cases

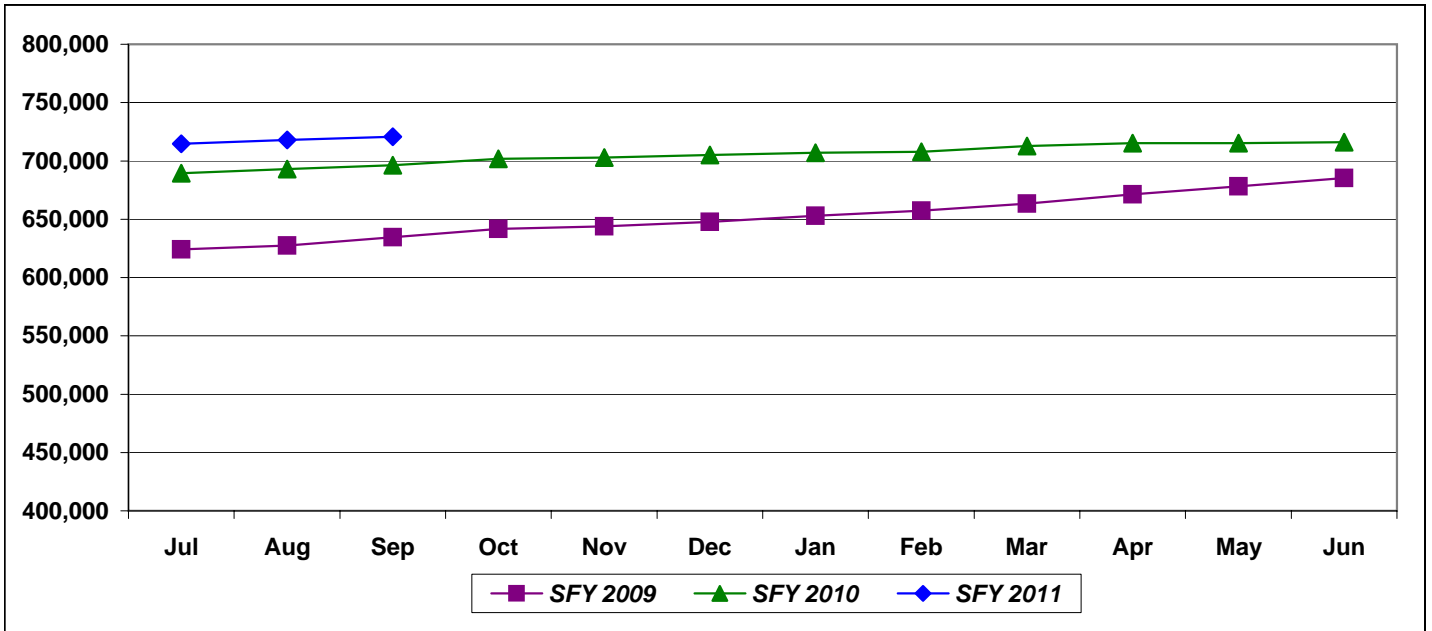
Def: Includes all cases active at some time during the month.



Jul	Aug	Sep	Oct	Nov	Dec	Jan	Feb	Mar	Apr	May	Jun
435,804	446,050	456,274	468,848	480,103	493,228	500,954	509,986	521,253	535,605	551,498	568,542
581,710	598,126	609,475	624,308	637,514	650,005	658,911	666,885	677,503	685,252	695,062	705,734
716,749	729,470	736,976									

## Medicaid Cases

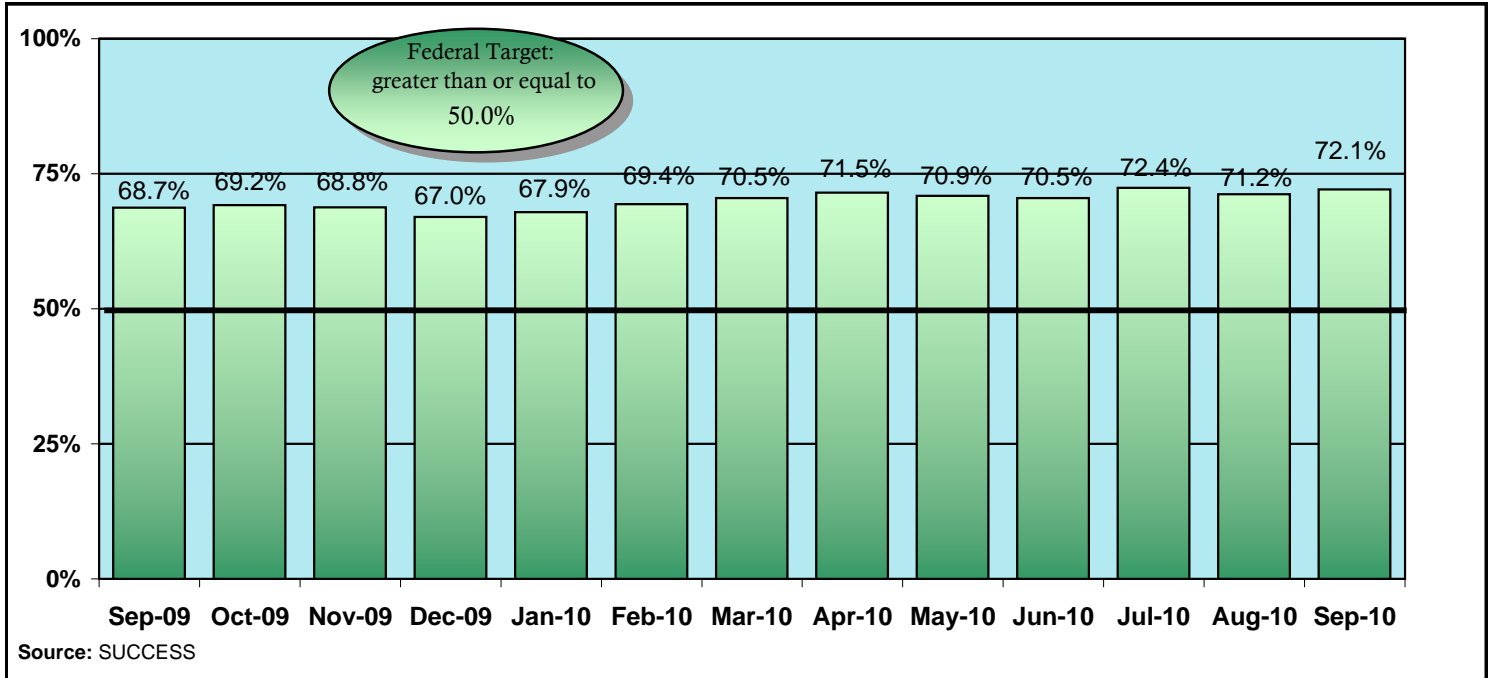
Def: Includes case active at the end of the month.



Jul	Aug	Sep	Oct	Nov	Dec	Jan	Feb	Mar	Apr	May	Jun
624,150	627,369	634,654	641,789	643,827	647,760	652,838	657,302	663,485	671,324	678,214	685,321
689,390	693,057	696,432	701,695	702,853	705,042	706,868	707,691	712,663	715,310	715,248	715,924
714,652	717,946	720,780									

## TANF Work Participation Rate

**Def:** Of all the families with a TANF work requirement, the percentage of families that met the work requirement.

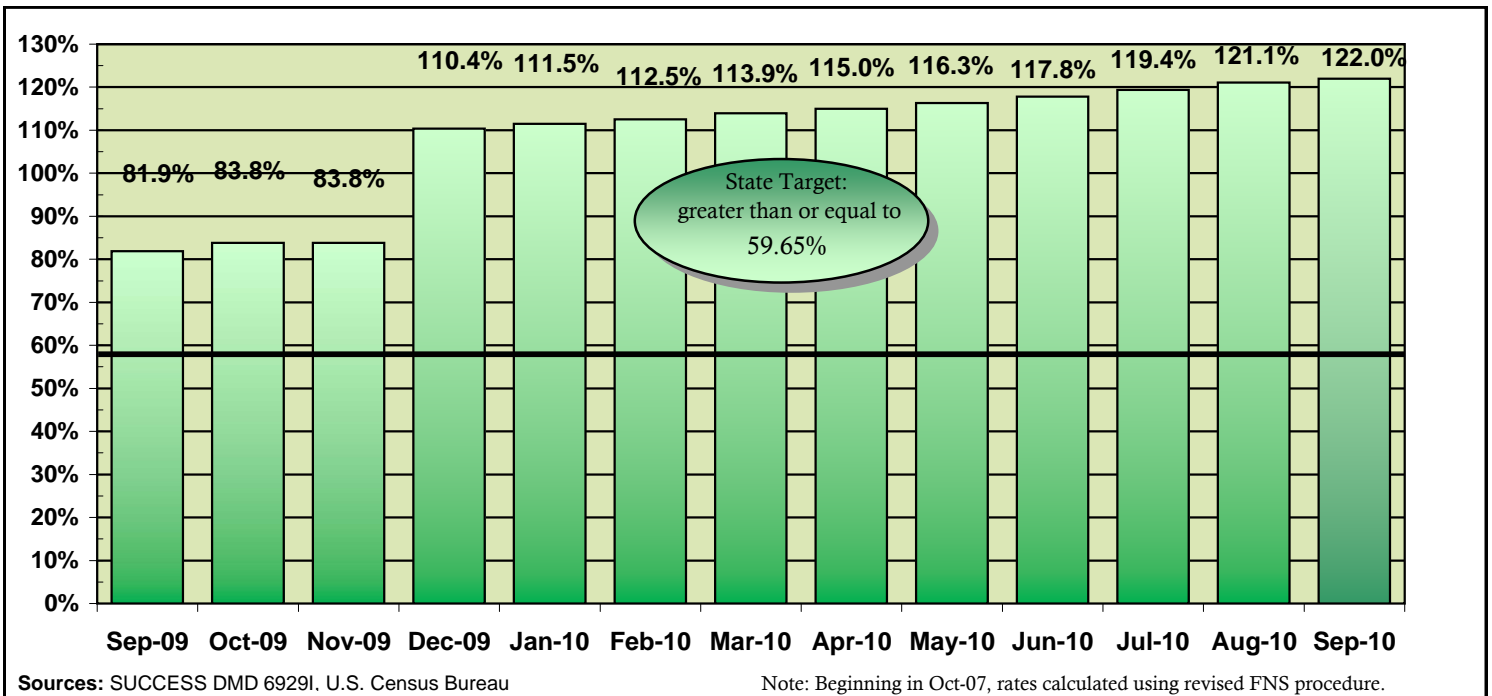


Sep-09	Oct-09	Nov-09	Dec-09	Jan-10	Feb-10	Mar-10	Apr-10	May-10	Jun-10	Jul-10	Aug-10	Sep-10
68.7%	69.2%	68.8%	67.0%	67.9%	69.4%	70.5%	71.5%	70.9%	70.5%	72.4%	71.2%	72.1%

Note: State Target is greater than or equal to 70%.

## Food Stamp Participation Rate

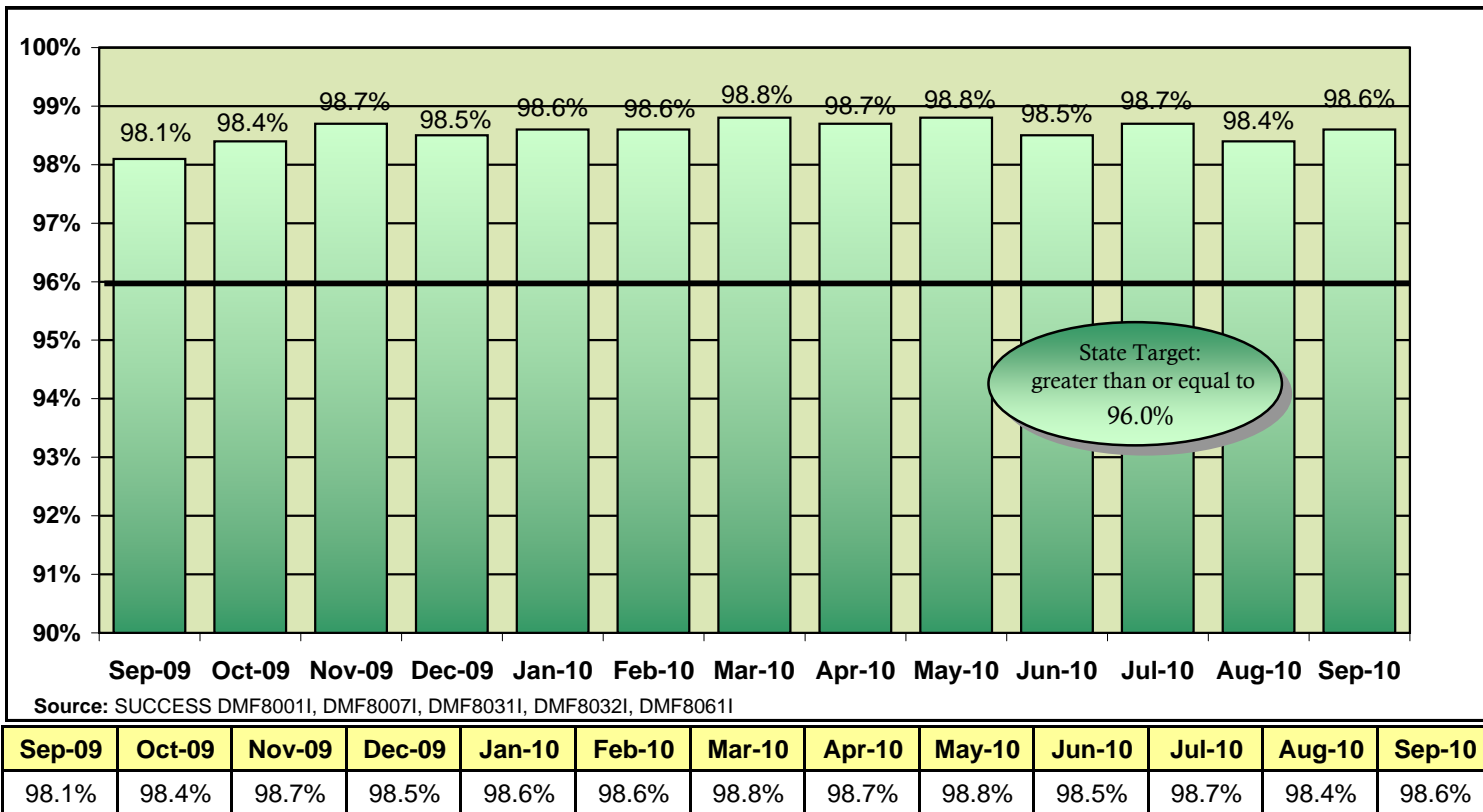
**Def:** The ratio of number of food stamp persons over the estimated persons at or below 125% of the Poverty level.



Sep-09	Oct-09	Nov-09	Dec-09	Jan-10	Feb-10	Mar-10	Apr-10	May-10	Jun-10	Jul-10	Aug-10	Sep-10
81.9%	83.8%	83.8%	110.4%	111.5%	112.5%	113.9%	115.0%	116.3%	117.8%	119.4%	121.1%	122.0%

## Medicaid (ABD) SOP

**Def:** Of all the Aged, Blind, Disabled Medicaid applications for benefits, the percentage that was completed within the mandated Standard of Promptness (SOP).



## Medicaid (Family) SOP

**Def:** Of all the Family Medicaid applications for benefits, the percentage that was completed within the mandated Standard of Promptness (SOP).

